

Data Path : Z:\voasrv\HPCHEM1\MSVOA_X\Data\VX082525\
 Data File : VX047519.D
 Acq On : 25 Aug 2025 15:30
 Operator : JC/MD
 Sample : Q2954-01
 Misc : 5.0mL/MSVOA_X/WATER
 ALS Vial : 10 Sample Multiplier: 1

Instrument :
 MSVOA_X
 ClientSampleId :

Quant Time: Aug 26 00:39:16 2025
 Quant Method : Z:\voasrv\HPCHEM1\MSVOA_X\Method\82X081525W.M
 Quant Title : SW846 8260
 QLast Update : Mon Aug 18 04:18:28 2025
 Response via : Initial Calibration

Compound	R.T.	QIon	Response	Conc	Units	Dev(Min)

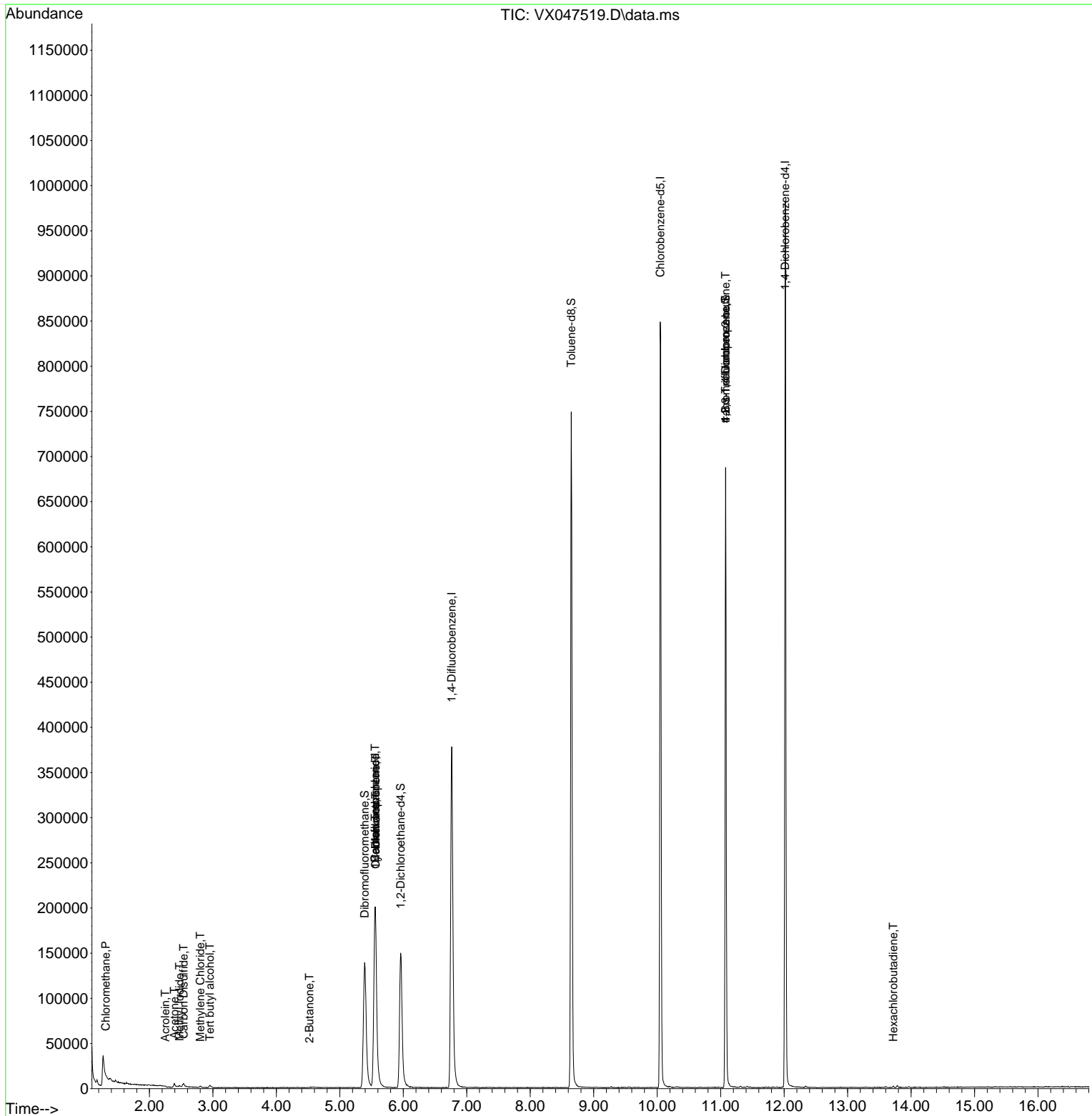
Internal Standards						
1) Pentafluorobenzene	5.556	168	200566	50.000	ug/l	-0.01
34) 1,4-Difluorobenzene	6.763	114	402418	50.000	ug/l	0.00
63) Chlorobenzene-d5	10.049	117	392485	50.000	ug/l	0.00
72) 1,4-Dichlorobenzene-d4	12.018	152	191604	50.000	ug/l	0.00
System Monitoring Compounds						
33) 1,2-Dichloroethane-d4	5.958	65	158657	56.522	ug/l	0.00
Spiked Amount	50.000	Range 78 - 117	Recovery	=	113.040%	
35) Dibromofluoromethane	5.391	113	132726	50.819	ug/l	0.00
Spiked Amount	50.000	Range 75 - 124	Recovery	=	101.640%	
50) Toluene-d8	8.647	98	450174	48.224	ug/l	0.00
Spiked Amount	50.000	Range 92 - 112	Recovery	=	96.440%	
62) 4-Bromofluorobenzene	11.079	95	182239	52.903	ug/l	0.00
Spiked Amount	50.000	Range 83 - 123	Recovery	=	105.800%	
Target Compounds						
						Qvalue
3) Chloromethane	1.313	50	827	0.360	ug/l #	83
10) Methyl Iodide	2.477	142	2877	0.678	ug/l	97
11) Tert butyl alcohol	2.953	59	960	3.931	ug/l #	72
13) Acrolein	2.251	56	301	0.584	ug/l #	50
16) Acetone	2.392	43	5252	4.978	ug/l	91
17) Carbon Disulfide	2.538	76	4493	0.590	ug/l #	89
20) Methylene Chloride	2.800	84	747	0.267	ug/l #	60
25) 2-Butanone	4.519	43	280	0.203	ug/l #	50
31) Cyclohexane	5.562	56	4302	0.952	ug/l #	1
36) 1,1-Dichloropropene	5.562	75	17349	4.208	ug/l #	50
38) Carbon Tetrachloride	5.556	117	21702	4.817	ug/l #	15
76) 1,2,3-Trichloropropane	11.079	75	94971	27.025	ug/l #	39
81) trans-1,4-Dichloro-2-b...	11.079	75	94971	106.858	ug/l #	7
94) Hexachlorobutadiene	13.719	225	323	0.204	ug/l	90

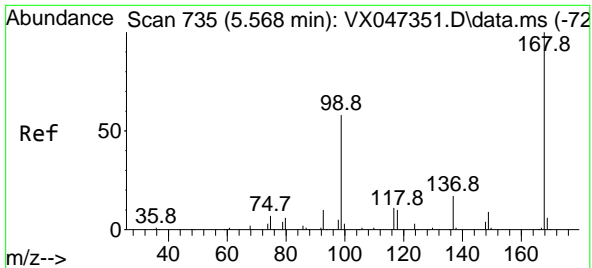
(#) = qualifier out of range (m) = manual integration (+) = signals summed

Data Path : Z:\voasrv\HPCHEM1\MSVOA_X\Data\VX082525\
 Data File : VX047519.D
 Acq On : 25 Aug 2025 15:30
 Operator : JC/MD
 Sample : Q2954-01
 Misc : 5.0mL/MSVOA_X/WATER
 ALS Vial : 10 Sample Multiplier: 1

Instrument :
 MSVOA_X
 ClientSampleId :

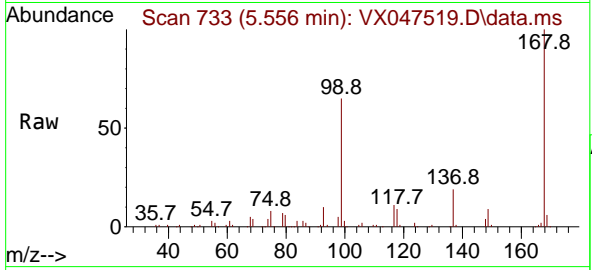
Quant Time: Aug 26 00:39:16 2025
 Quant Method : Z:\voasrv\HPCHEM1\MSVOA_X\Method\82X081525W.M
 Quant Title : SW846 8260
 QLast Update : Mon Aug 18 04:18:28 2025
 Response via : Initial Calibration



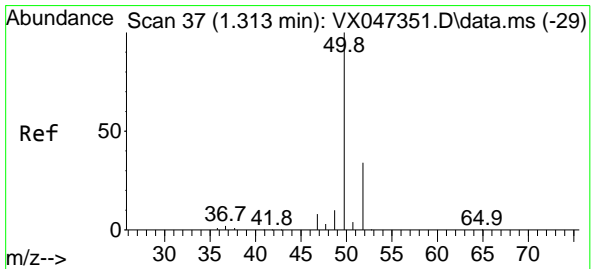
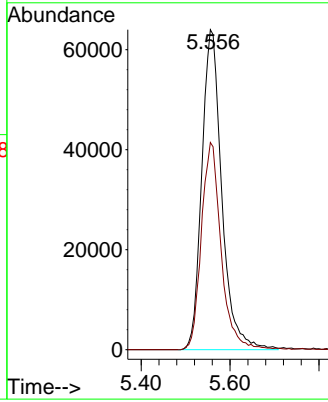
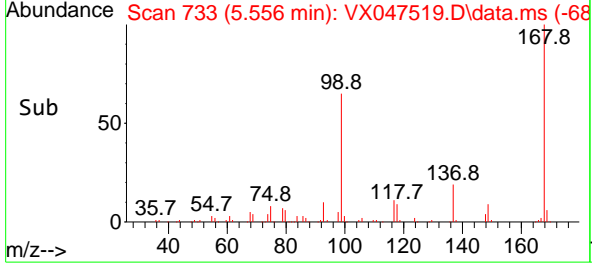


#1
 Pentafluorobenzene
 Concen: 50.000 ug/l
 RT: 5.556 min Scan# 71
 Delta R.T. -0.012 min
 Lab File: VX047519.D
 Acq: 25 Aug 2025 15:30

Instrument :
 MSVOA_X
 ClientSampleId :

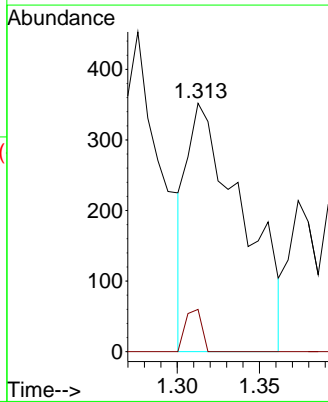
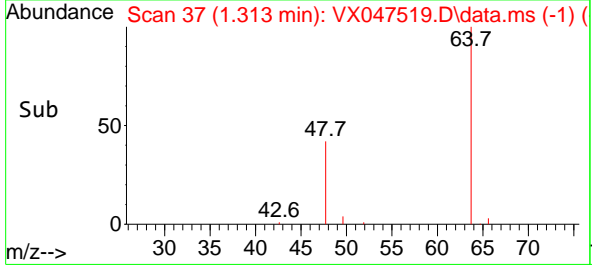
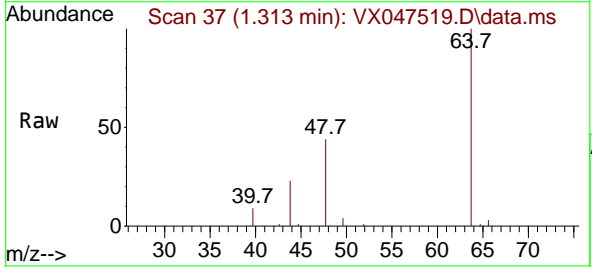


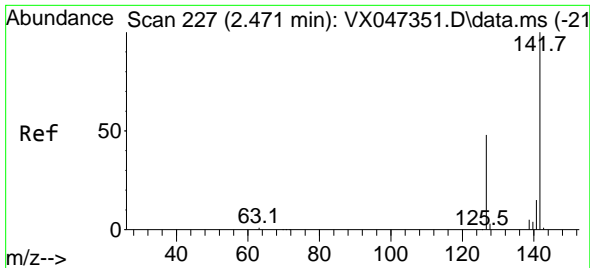
Tgt Ion:168 Resp: 200566
 Ion Ratio Lower Upper
 168 100
 99 64.8 47.9 71.9



#3
 Chloromethane
 Concen: 0.360 ug/l
 RT: 1.313 min Scan# 37
 Delta R.T. -0.000 min
 Lab File: VX047519.D
 Acq: 25 Aug 2025 15:30

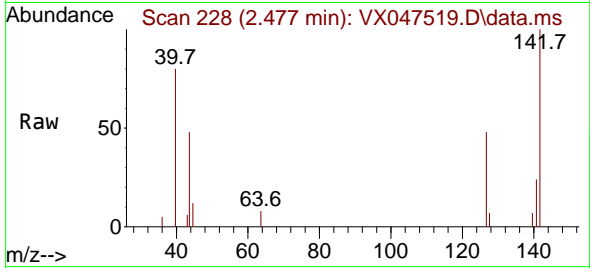
Tgt Ion: 50 Resp: 827
 Ion Ratio Lower Upper
 50 100
 52 24.2 27.0 40.4#



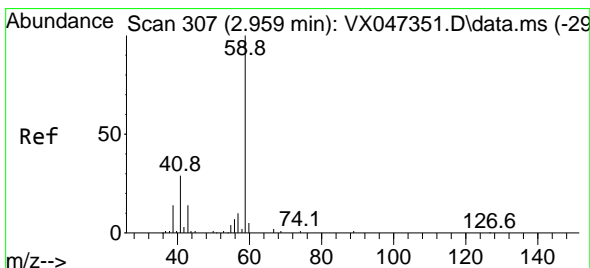
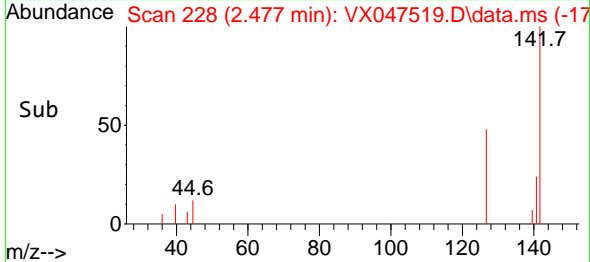
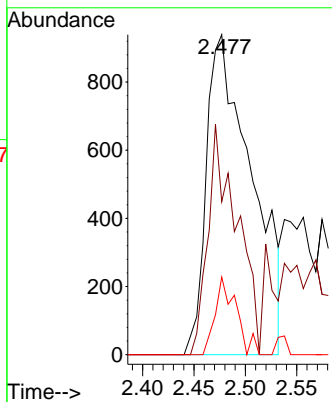


#10
 Methyl Iodide
 Concen: 0.678 ug/l
 RT: 2.477 min Scan# 21
 Delta R.T. 0.006 min
 Lab File: VX047519.D
 Acq: 25 Aug 2025 15:30

Instrument : MSVOA_X
 ClientSampleId :

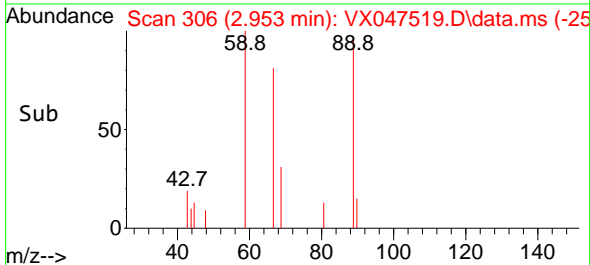
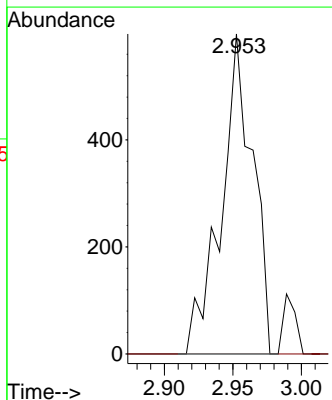
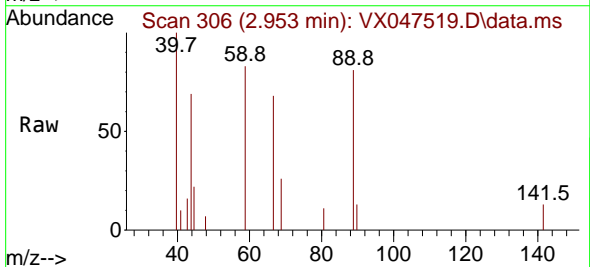


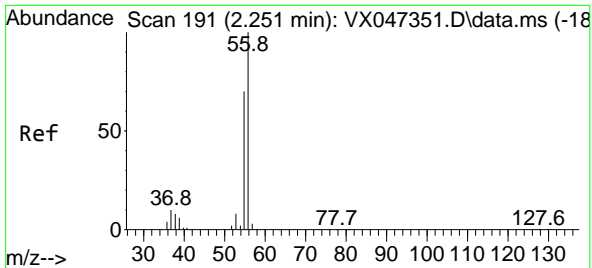
Tgt Ion:142 Resp: 2877
 Ion Ratio Lower Upper
 142 100
 127 46.1 36.1 54.1
 141 11.3 11.1 16.7



#11
 Tert butyl alcohol
 Concen: 3.931 ug/l
 RT: 2.953 min Scan# 306
 Delta R.T. -0.006 min
 Lab File: VX047519.D
 Acq: 25 Aug 2025 15:30

Tgt Ion: 59 Resp: 960
 Ion Ratio Lower Upper
 59 100
 57 0.0 8.3 12.5#

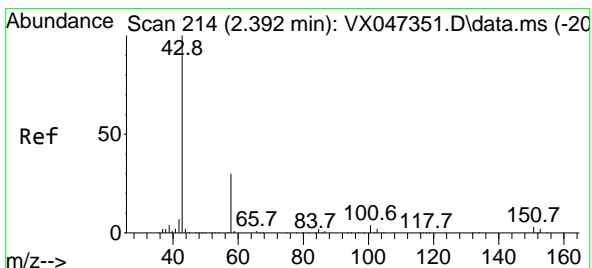
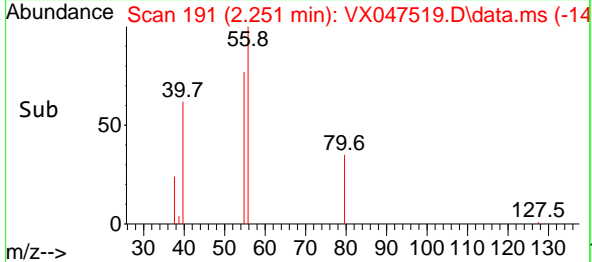
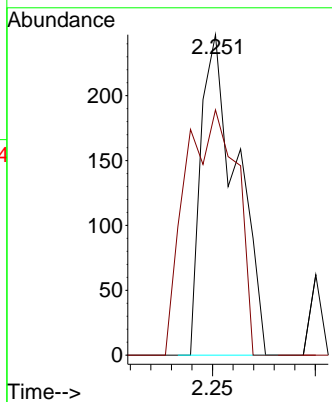
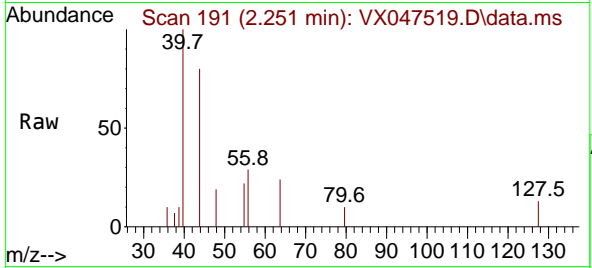




#13
 Acrolein
 Concen: 0.584 ug/l
 RT: 2.251 min Scan# 191
 Delta R.T. -0.000 min
 Lab File: VX047519.D
 Acq: 25 Aug 2025 15:30

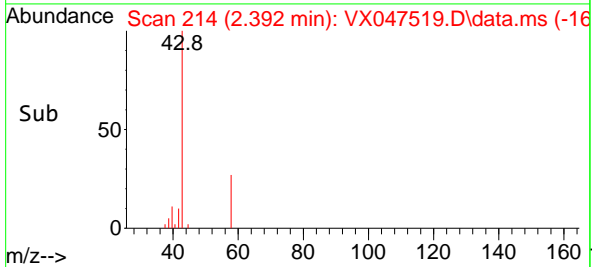
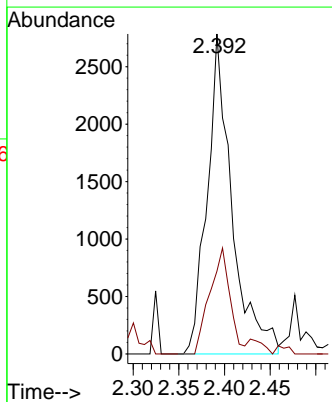
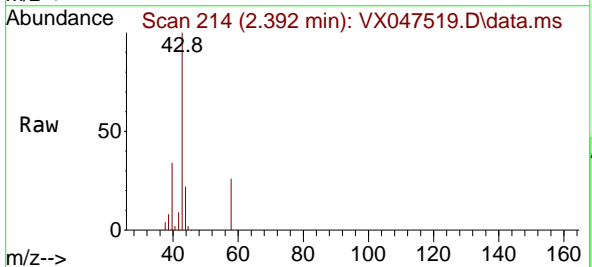
Instrument : MSVOA_X
 ClientSampleId :

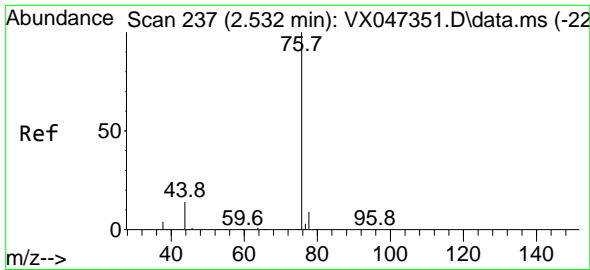
Tgt Ion: 56 Resp: 301
 Ion Ratio Lower Upper
 56 100
 55 110.3 55.5 83.3#



#16
 Acetone
 Concen: 4.978 ug/l
 RT: 2.392 min Scan# 214
 Delta R.T. -0.000 min
 Lab File: VX047519.D
 Acq: 25 Aug 2025 15:30

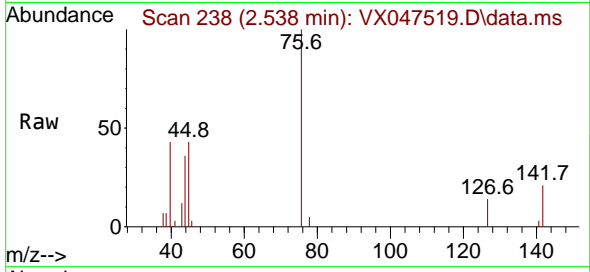
Tgt Ion: 43 Resp: 5252
 Ion Ratio Lower Upper
 43 100
 58 25.9 24.8 37.2



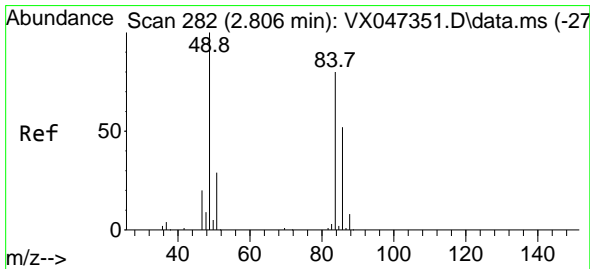
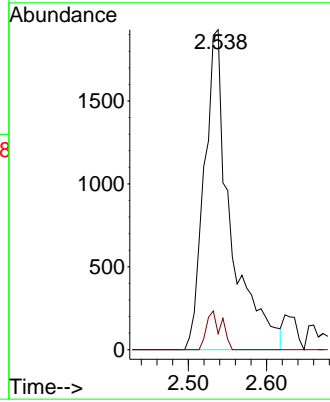
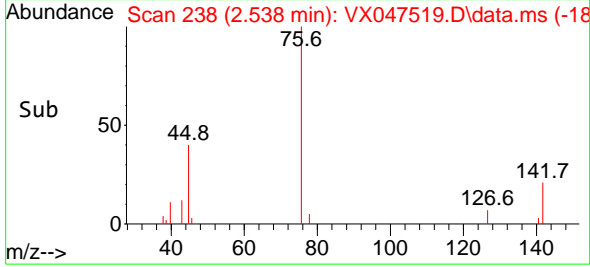


#17
 Carbon Disulfide
 Concen: 0.590 ug/l
 RT: 2.538 min Scan# 21
 Delta R.T. 0.006 min
 Lab File: VX047519.D
 Acq: 25 Aug 2025 15:30

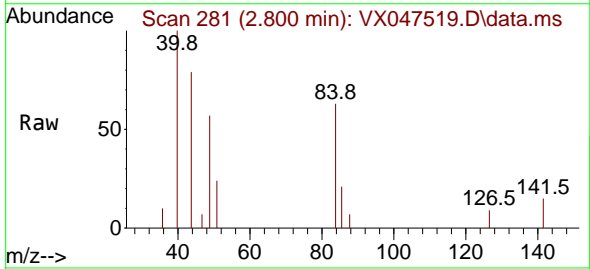
Instrument :
 MSVOA_X
 ClientSampleId :



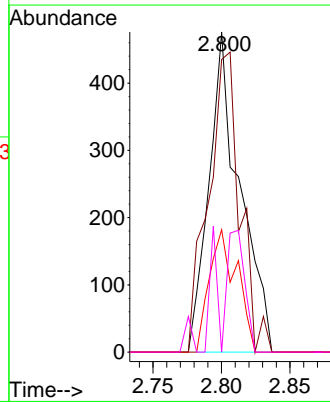
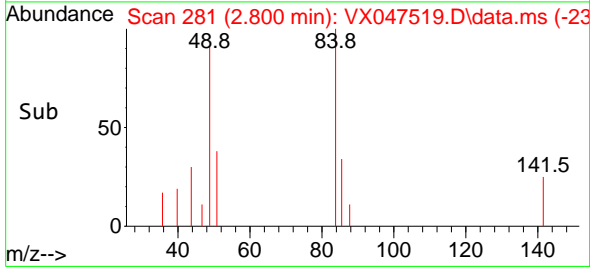
Tgt Ion: 76 Resp: 4493
 Ion Ratio Lower Upper
 76 100
 78 5.0 7.2 10.8#

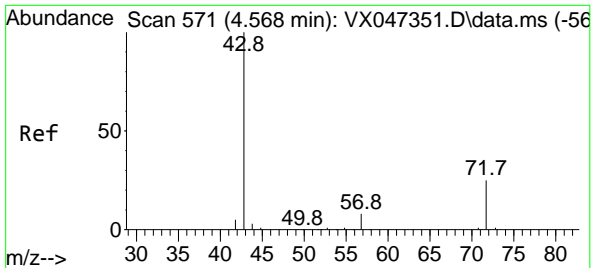


#20
 Methylene Chloride
 Concen: 0.267 ug/l
 RT: 2.800 min Scan# 281
 Delta R.T. -0.006 min
 Lab File: VX047519.D
 Acq: 25 Aug 2025 15:30



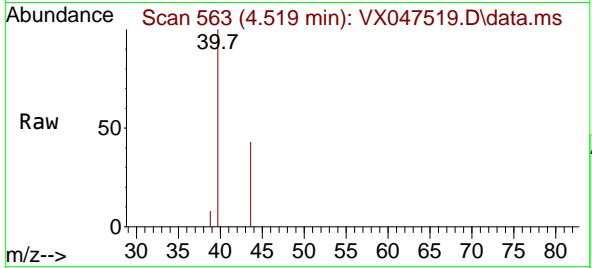
Tgt Ion: 84 Resp: 747
 Ion Ratio Lower Upper
 84 100
 49 91.4 100.1 150.1#
 51 38.2 29.5 44.3
 86 0.0 51.8 77.8#



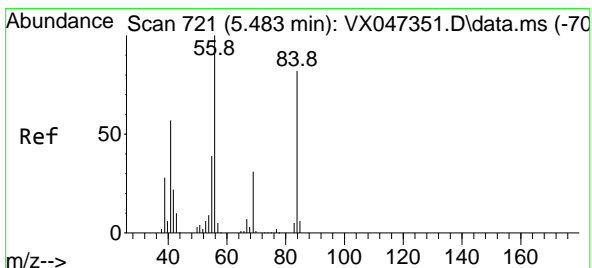
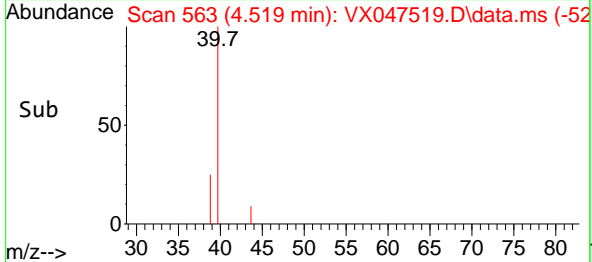
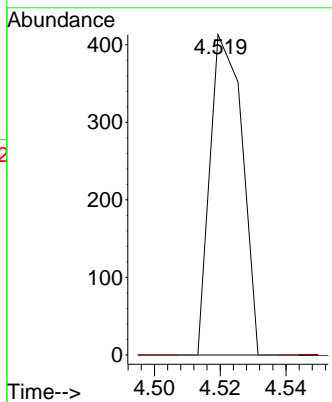


#25
 2-Butanone
 Concen: 0.203 ug/l
 RT: 4.519 min Scan# 50
 Delta R.T. -0.049 min
 Lab File: VX047519.D
 Acq: 25 Aug 2025 15:30

Instrument :
 MSVOA_X
 ClientSampleId :

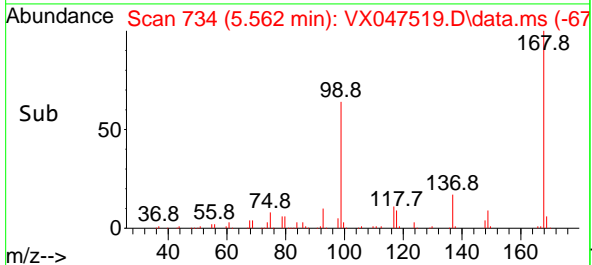
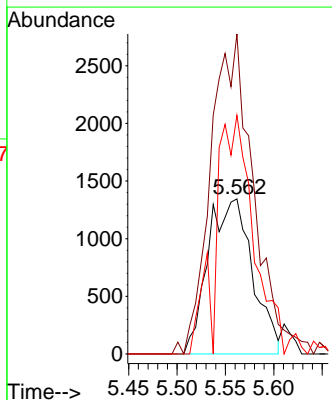
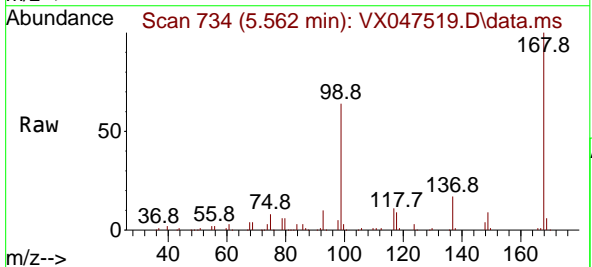


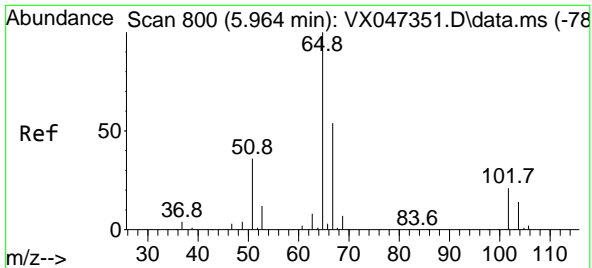
Tgt Ion: 43 Resp: 280
 Ion Ratio Lower Upper
 43 100
 72 0.0 19.8 29.8#



#31
 Cyclohexane
 Concen: 0.952 ug/l
 RT: 5.562 min Scan# 734
 Delta R.T. 0.079 min
 Lab File: VX047519.D
 Acq: 25 Aug 2025 15:30

Tgt Ion: 56 Resp: 4302
 Ion Ratio Lower Upper
 56 100
 69 198.7 24.3 36.5#
 84 153.8 65.3 97.9#

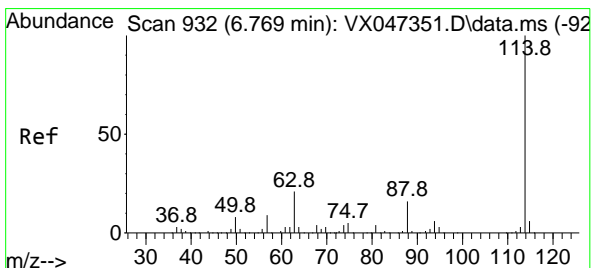
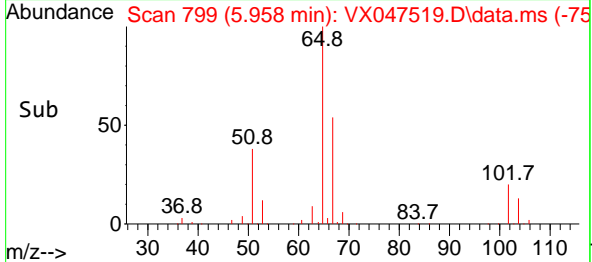
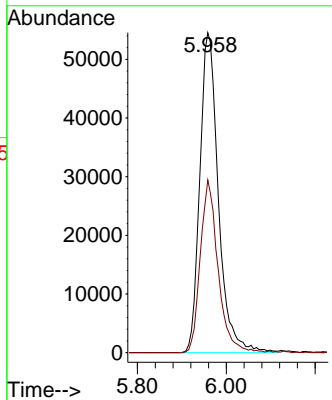
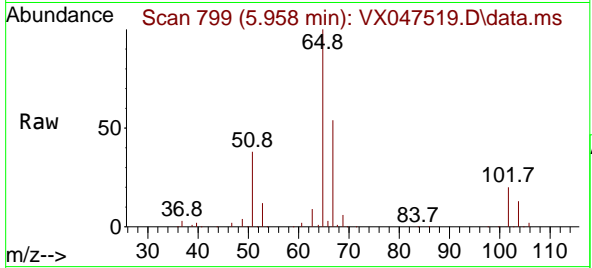




#33
 1,2-Dichloroethane-d4
 Concen: 56.522 ug/l
 RT: 5.958 min Scan# 799
 Delta R.T. -0.006 min
 Lab File: VX047519.D
 Acq: 25 Aug 2025 15:30

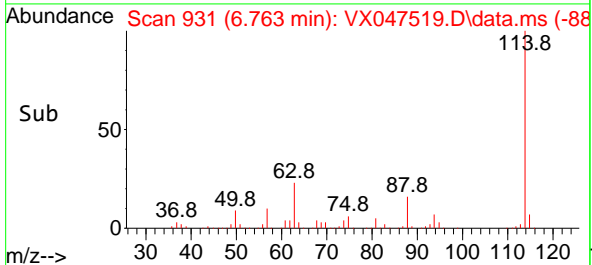
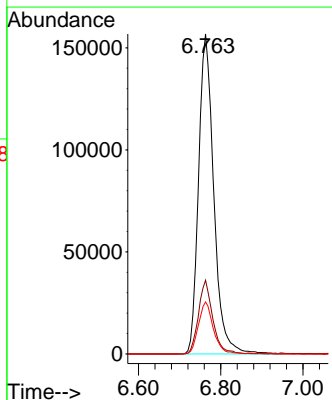
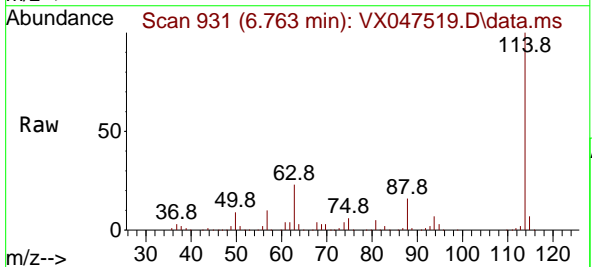
Instrument : MSVOA_X
 ClientSampleId :

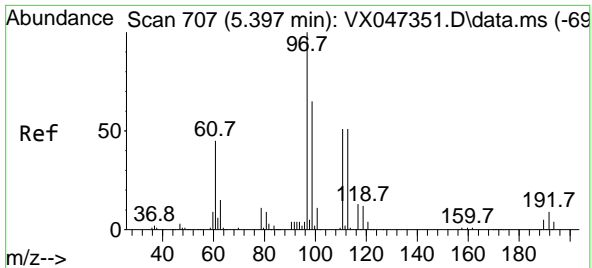
Tgt Ion: 65 Resp: 158657
 Ion Ratio Lower Upper
 65 100
 67 51.6 0.0 106.0



#34
 1,4-Difluorobenzene
 Concen: 50.000 ug/l
 RT: 6.763 min Scan# 931
 Delta R.T. -0.006 min
 Lab File: VX047519.D
 Acq: 25 Aug 2025 15:30

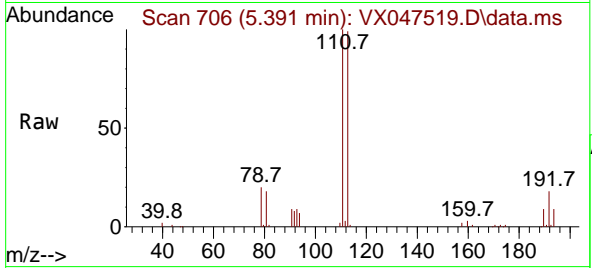
Tgt Ion: 114 Resp: 402418
 Ion Ratio Lower Upper
 114 100
 63 23.0 0.0 42.4
 88 16.3 0.0 33.0



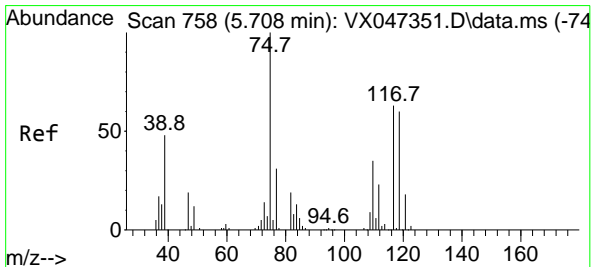
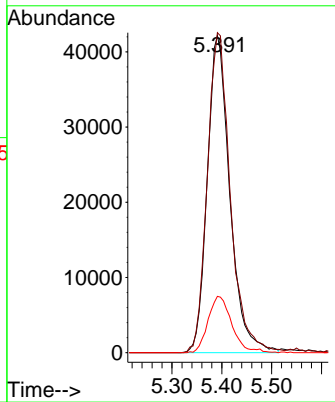
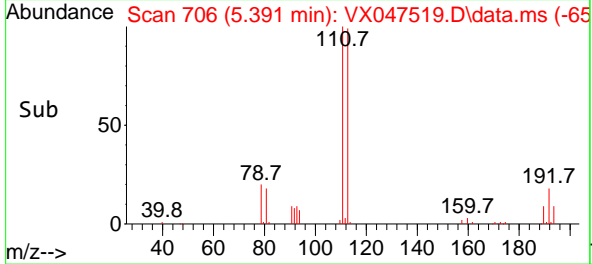


#35
 Dibromofluoromethane
 Concen: 50.819 ug/l
 RT: 5.391 min Scan# 707
 Delta R.T. -0.006 min
 Lab File: VX047519.D
 Acq: 25 Aug 2025 15:30

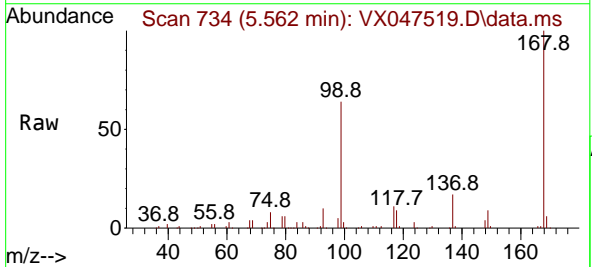
Instrument : MSVOA_X
 ClientSampleId :



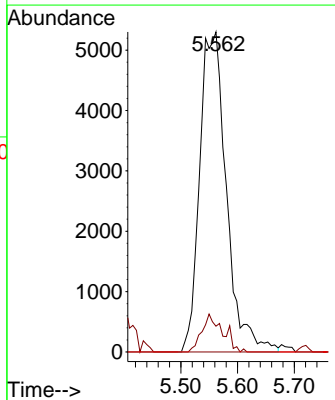
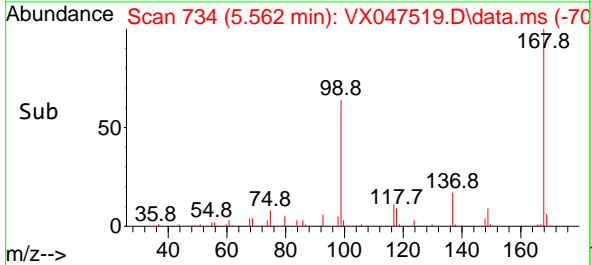
Tgt Ion: 113 Resp: 132726
 Ion Ratio Lower Upper
 113 100
 111 103.0 81.4 122.2
 192 18.7 14.1 21.1

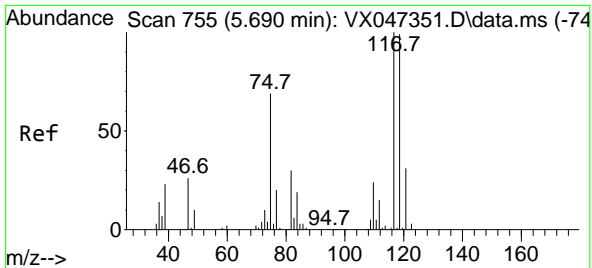


#36
 1,1-Dichloropropene
 Concen: 4.208 ug/l
 RT: 5.562 min Scan# 734
 Delta R.T. -0.146 min
 Lab File: VX047519.D
 Acq: 25 Aug 2025 15:30



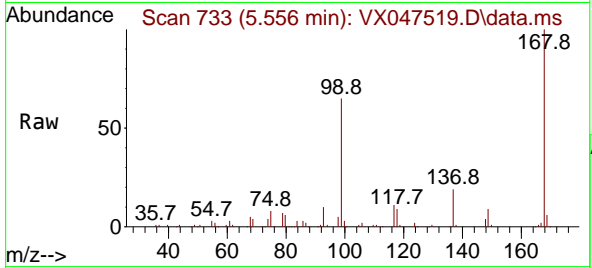
Tgt Ion: 75 Resp: 17349
 Ion Ratio Lower Upper
 75 100
 110 9.3 17.4 52.2#
 77 0.0 24.4 36.6#



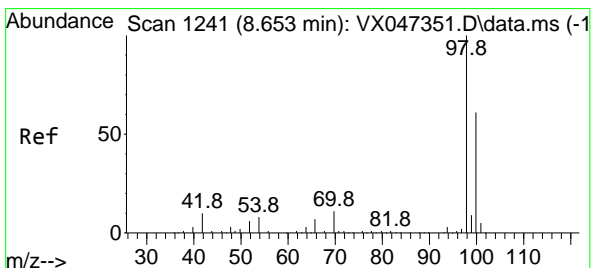
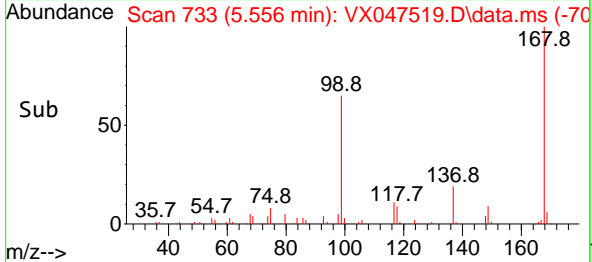
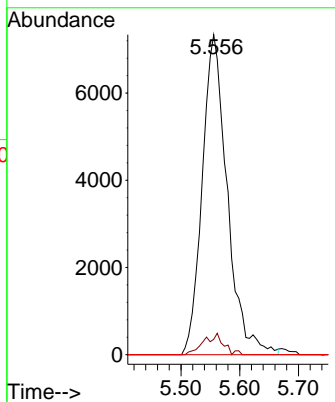


#38
 Carbon Tetrachloride
 Concen: 4.817 ug/l
 RT: 5.556 min Scan# 711
 Delta R.T. -0.134 min
 Lab File: VX047519.D
 Acq: 25 Aug 2025 15:30

Instrument : MSVOA_X
 ClientSampleId :

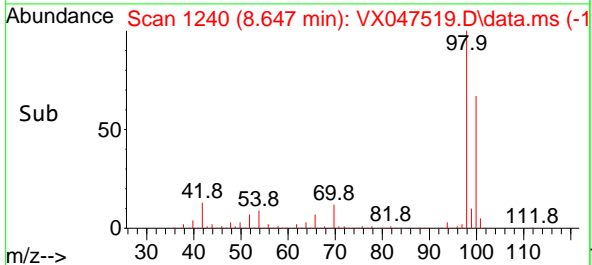
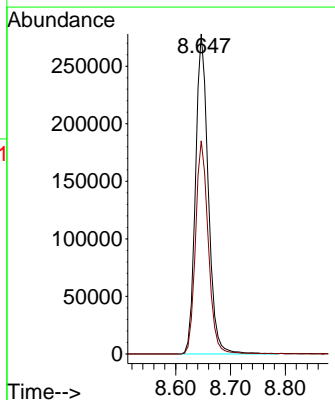
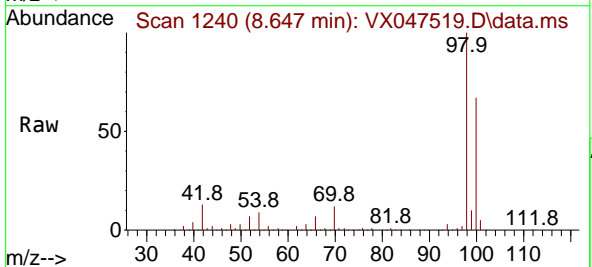


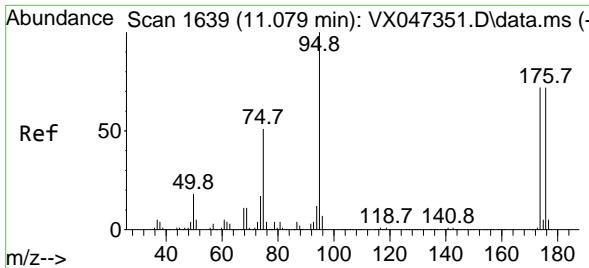
Tgt Ion: 117 Resp: 21702
 Ion Ratio Lower Upper
 117 100
 119 4.8 78.5 117.7#
 121 0.0 24.7 37.1#



#50
 Toluene-d8
 Concen: 48.224 ug/l
 RT: 8.647 min Scan# 1240
 Delta R.T. -0.006 min
 Lab File: VX047519.D
 Acq: 25 Aug 2025 15:30

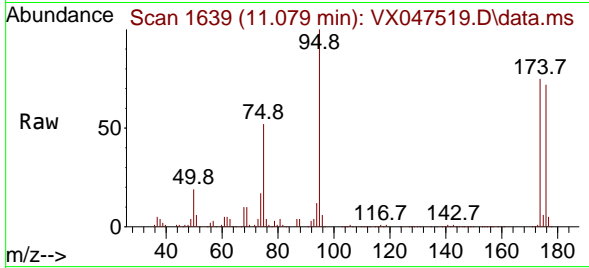
Tgt Ion: 98 Resp: 450174
 Ion Ratio Lower Upper
 98 100
 100 66.9 53.9 80.9



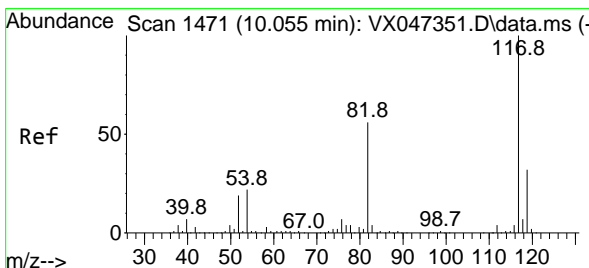
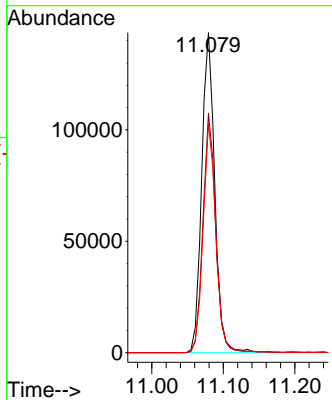
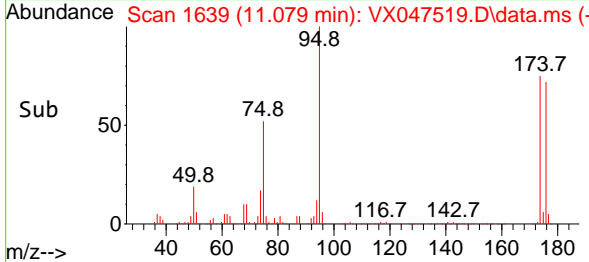


#62
 4-Bromofluorobenzene
 Concen: 52.903 ug/l
 RT: 11.079 min Scan# 1
 Delta R.T. -0.000 min
 Lab File: VX047519.D
 Acq: 25 Aug 2025 15:30

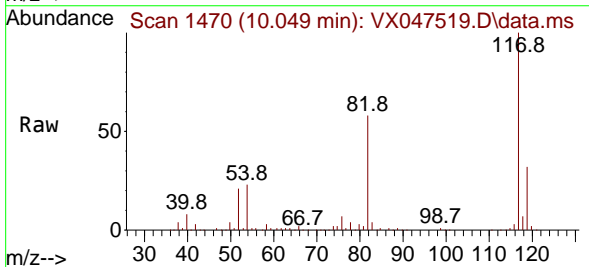
Instrument :
 MSVOA_X
 ClientSampleId :



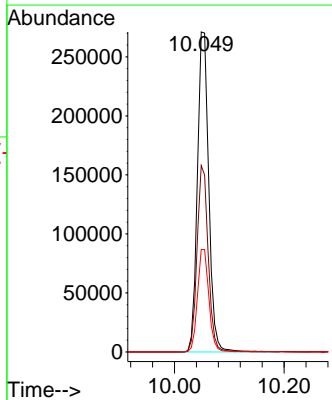
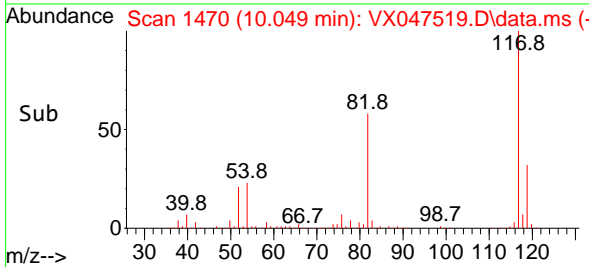
Tgt Ion: 95 Resp: 182239
 Ion Ratio Lower Upper
 95 100
 174 73.2 0.0 148.0
 176 70.5 0.0 145.4

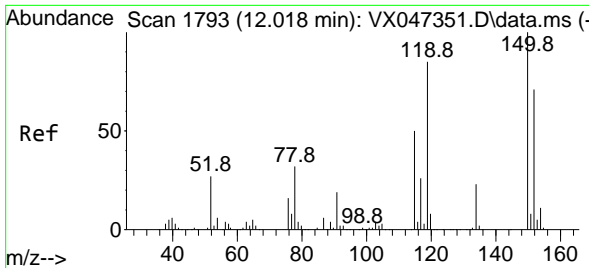


#63
 Chlorobenzene-d5
 Concen: 50.000 ug/l
 RT: 10.049 min Scan# 1470
 Delta R.T. -0.006 min
 Lab File: VX047519.D
 Acq: 25 Aug 2025 15:30



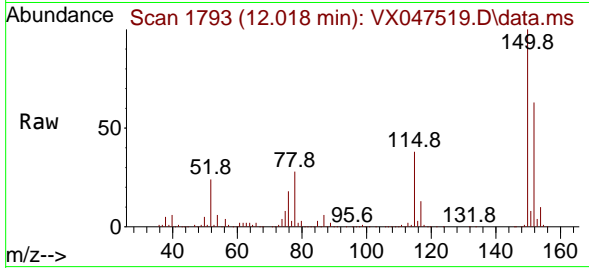
Tgt Ion: 117 Resp: 392485
 Ion Ratio Lower Upper
 117 100
 82 58.2 45.0 67.4
 119 32.1 25.8 38.8



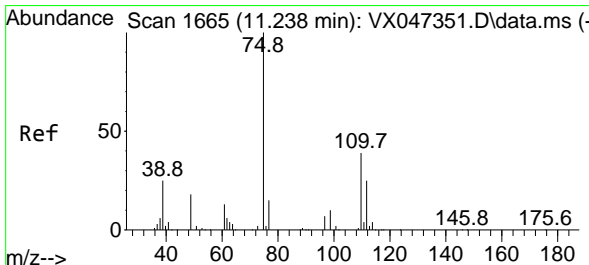
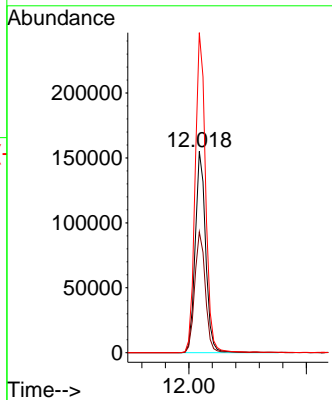
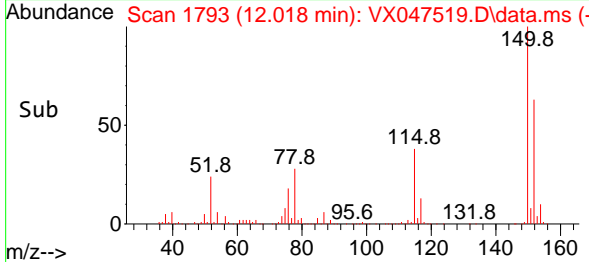


#72
 1,4-Dichlorobenzene-d4
 Concen: 50.000 ug/l
 RT: 12.018 min Scan# 1
 Delta R.T. -0.000 min
 Lab File: VX047519.D
 Acq: 25 Aug 2025 15:30

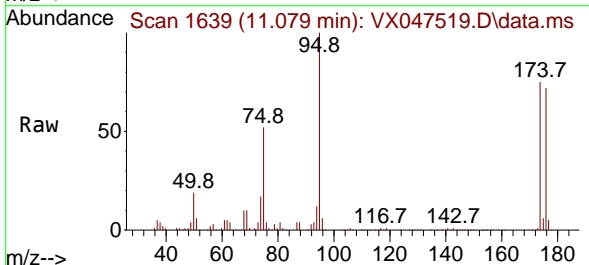
Instrument :
 MSVOA_X
 ClientSampleId :



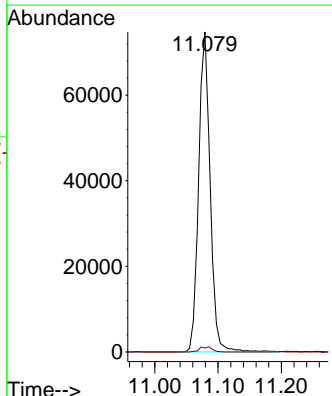
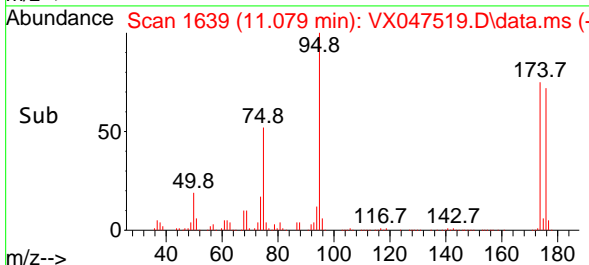
Tgt Ion:152 Resp: 191604
 Ion Ratio Lower Upper
 152 100
 115 61.0 44.6 133.8
 150 158.6 0.0 349.8

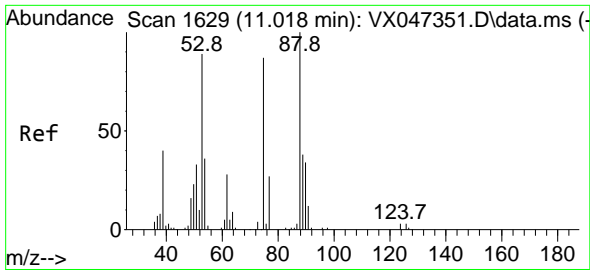


#76
 1,2,3-Trichloropropane
 Concen: 27.025 ug/l
 RT: 11.079 min Scan# 1639
 Delta R.T. -0.159 min
 Lab File: VX047519.D
 Acq: 25 Aug 2025 15:30



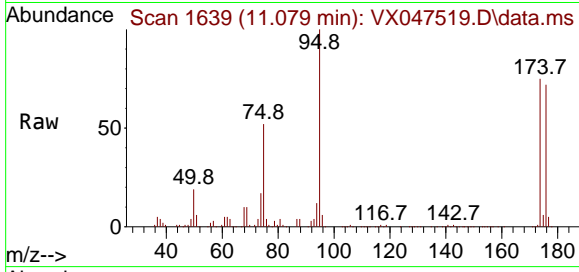
Tgt Ion: 75 Resp: 94971
 Ion Ratio Lower Upper
 75 100
 77 1.7 19.4 58.2#



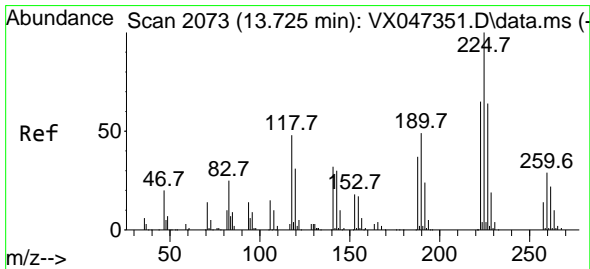
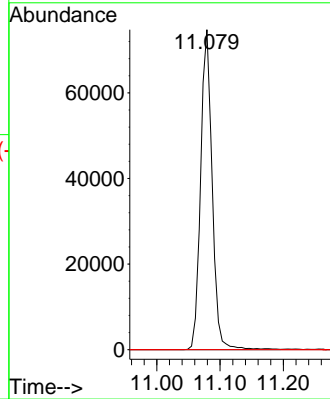
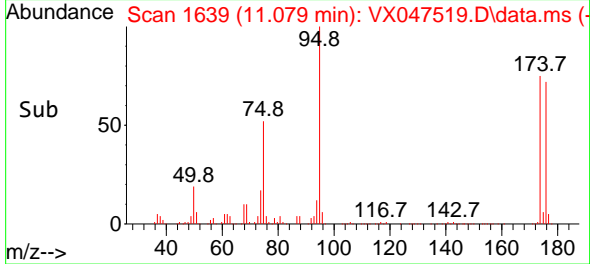


#81
 trans-1,4-Dichloro-2-butene
 Concen: 106.858 ug/l
 RT: 11.079 min Scan# 1
 Delta R.T. 0.061 min
 Lab File: VX047519.D
 Acq: 25 Aug 2025 15:30

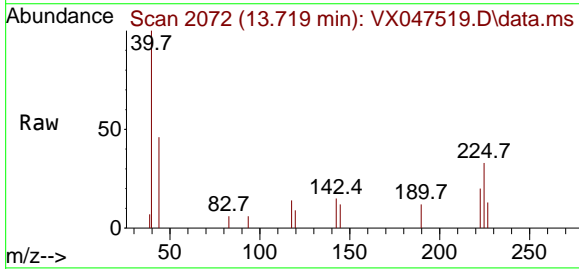
Instrument :
 MSVOA_X
 ClientSampleId :



Tgt Ion: 75 Resp: 94971
 Ion Ratio Lower Upper
 75 100
 53 0.0 85.2 127.8#
 89 0.0 36.7 55.1#



#94
 Hexachlorobutadiene
 Concen: 0.204 ug/l
 RT: 13.719 min Scan# 2072
 Delta R.T. -0.006 min
 Lab File: VX047519.D
 Acq: 25 Aug 2025 15:30



Tgt Ion: 225 Resp: 323
 Ion Ratio Lower Upper
 225 100
 223 54.8 32.2 96.6
 227 57.9 31.6 95.0

