

Data Path : Z:\VOASRV\HPCHEM1\MSVOA X\DATA\VX082620\
 Data File : VX018073.D
 Acq On : 26 Aug 2020 13:39
 Operator : JC/SP
 Sample : PB131195ZHE#04
 Misc : 5.0mL/MSVOA X/WATER
 ALS Vial : 10 Sample Multiplier: 1

Instrument :
 MSVOA_X
 ClientSampleId :
 PB131195ZHE#04

Quant Time: Aug 27 04:03:46 2020
 Quant Method : Z:\VOASRV\HPCHEM1\MSVOA_X\METHOD\82X082120W.M
 Quant Title : SW846 8260
 QLast Update : Fri Aug 21 03:03:56 2020
 Response via : Initial Calibration

Internal Standards	R.T.	QIon	Response	Conc	Units	Dev(Min)
1) Pentafluorobenzene	5.63	168	464336	50.00	ug/l	0.00
34) 1,4-Difluorobenzene	6.83	114	731860	50.00	ug/l	0.00
63) Chlorobenzene-d5	10.10	117	688765	50.00	ug/l	0.00
72) 1,4-Dichlorobenzene-d4	12.06	152	325331	50.00	ug/l	0.00

System Monitoring Compounds

33) 1,2-Dichloroethane-d4	6.03	65	325728	50.53	ug/l	0.00
Spiked Amount	50.000		Recovery	=	101.06%	
35) Dibromofluoromethane	5.47	113	260642	52.29	ug/l	0.00
Spiked Amount	50.000		Recovery	=	104.58%	
50) Toluene-d8	8.70	98	870510	46.89	ug/l	0.00
Spiked Amount	50.000		Recovery	=	93.78%	
62) 4-Bromofluorobenzene	11.12	95	336922	46.13	ug/l	0.00
Spiked Amount	50.000		Recovery	=	92.26%	

Target Compounds

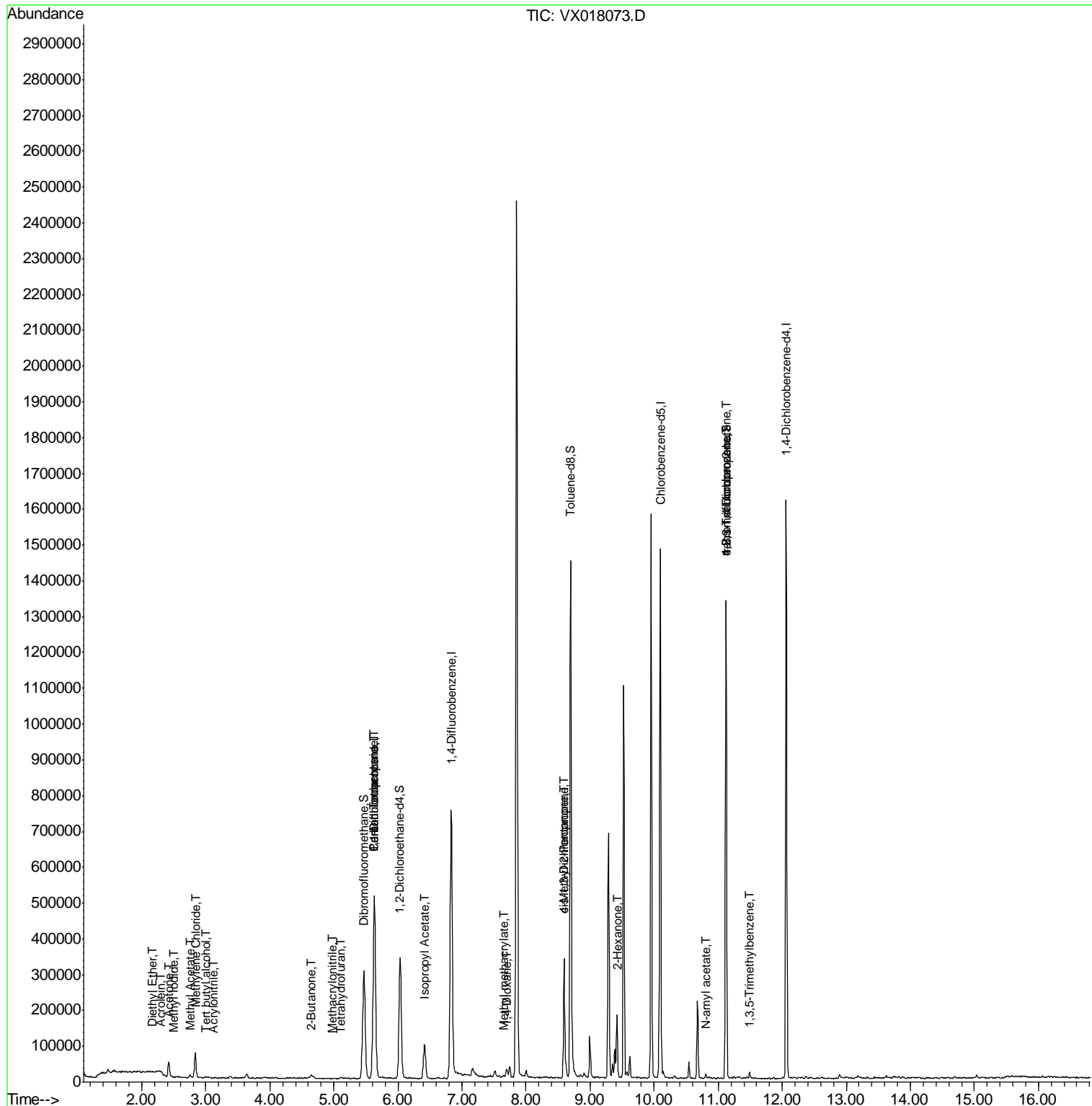
						Qvalue
8) Diethyl Ether	2.18	74	1019	0.371	ug/l	92
10) Methyl Iodide	2.50	142	390	5.361	ug/l #	38
11) Tert butyl alcohol	3.00	59	2601	2.075	ug/l #	68
13) Acrolein	2.29	56	355	0.683	ug/l #	14
15) Acrylonitrile	3.12	53	588	0.207	ug/l #	71
16) Acetone	2.42	43	46412	18.477	ug/l	92
18) Methyl Acetate	2.75	43	9221	1.521	ug/l #	87
20) Methylene Chloride	2.84	84	31049	4.994	ug/l	87
25) 2-Butanone	4.64	43	10013	2.426	ug/l	95
29) Tetrahydrofuran	5.10	42	3039	1.156	ug/l #	67
36) 1,1-Dichloropropene	5.63	75	35611	5.275	ug/l #	52
38) Carbon Tetrachloride	5.64	117	48866	6.424	ug/l #	17
41) Methacrylonitrile	4.98	41	1144	0.266	ug/l #	37
43) Isopropyl Acetate	6.42	43	130306	10.290	ug/l	100
48) Methyl methacrylate	7.65	41	6933	1.100	ug/l #	19
49) 1,4-Dioxane	7.71	88	247	2.163	ug/l #	1
51) 4-Methyl-2-Pentanone	8.59	43	123798	15.827	ug/l #	50
54) cis-1,3-Dichloropropene	8.59	75	50654	5.748	ug/l #	65
59) 2-Hexanone	9.42	43	115527	19.423	ug/l #	25
74) N-amyl acetate	10.80	43	6202	0.609	ug/l #	55
76) 1,2,3-Trichloropropane	11.12	75	174664	24.134	ug/l #	36
80) 1,3,5-Trimethylbenzene	11.49	105	6177	0.350	ug/l	90
81) trans-1,4-Dichloro-2-buten	11.12	75	174664	65.183	ug/l #	12

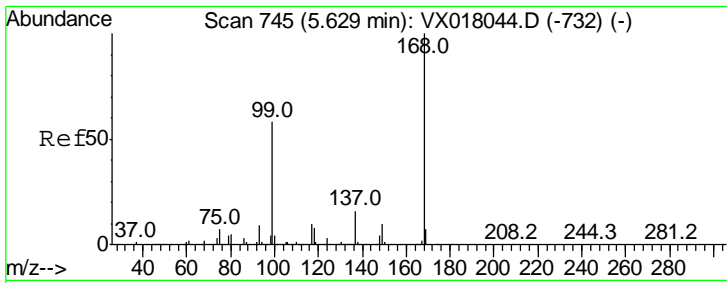
(#) = qualifier out of range (m) = manual integration (+) = signals summed

Data Path : Z:\VOASRV\HPCHEM1\MSVOA X\DATA\VX082620\
 Data File : VX018073.D
 Acq On : 26 Aug 2020 13:39
 Operator : JC/SP
 Sample : PB131195ZHE#04
 Misc : 5.0mL/MSVOA X/WATER
 ALS Vial : 10 Sample Multiplier: 1

Instrument :
 MSVOA_X
 ClientSampleId :
 PB131195ZHE#04

Quant Time: Aug 27 04:03:46 2020
 Quant Method : Z:\VOASRV\HPCHEM1\MSVOA_X\METHOD\82X082120W.M
 Quant Title : SW846 8260
 QLast Update : Fri Aug 21 03:03:56 2020
 Response via : Initial Calibration

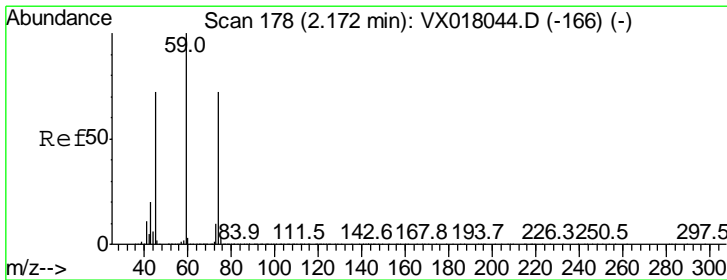
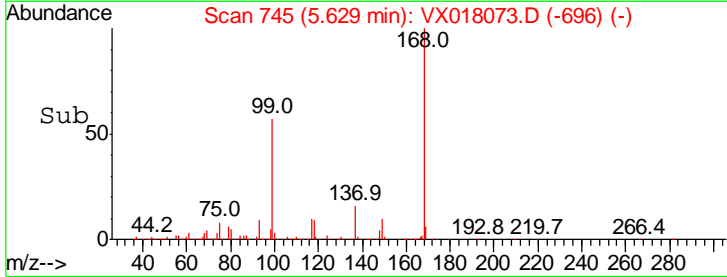
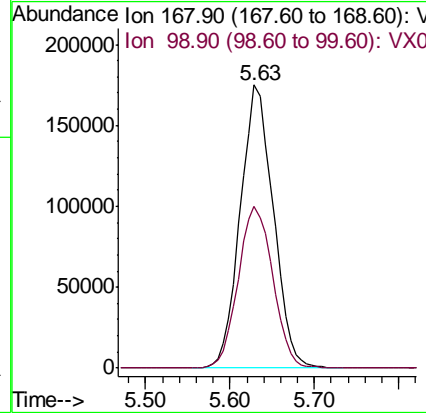
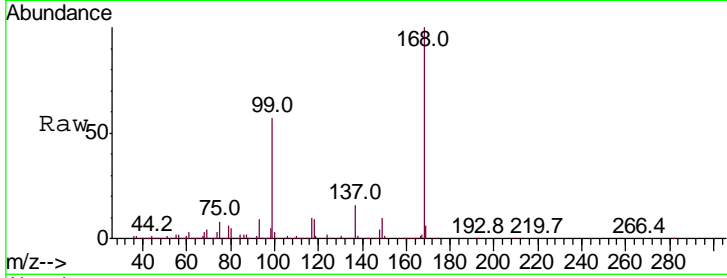




#1
 Pentafluorobenzene
 Concen: 50.000 ug/l
 RT: 5.63 min Scan# 745
 Delta R.T. -0.00 min
 Lab File: VX018073.D
 Acq: 26 Aug 2020 13:39

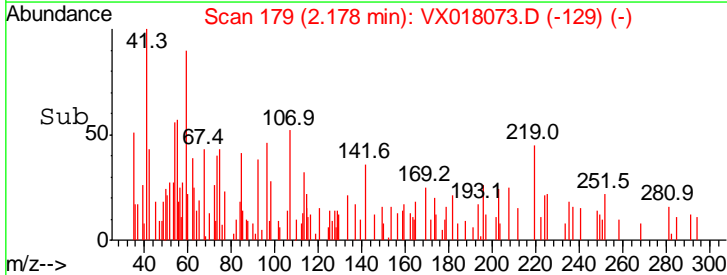
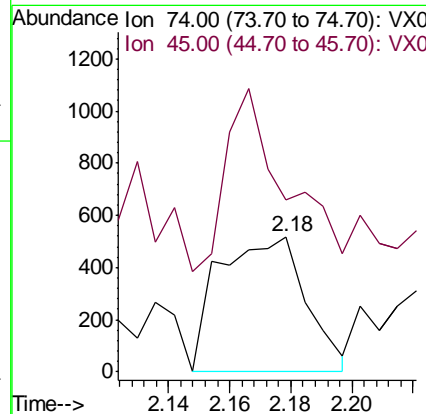
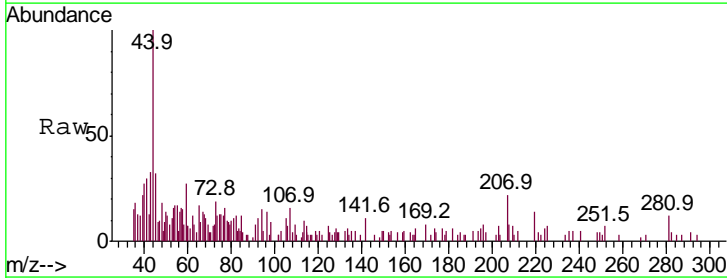
Instrument :
 MSVOA_X
 ClientSampleId :
 PB131195ZHE#04

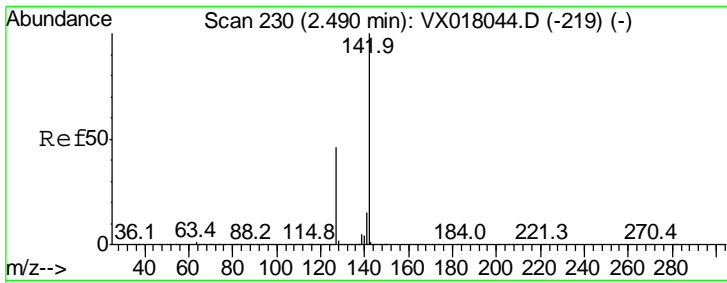
Tgt Ion: 168 Resp: 464336
 Ion Ratio Lower Upper
 168 100
 99 56.9 46.3 69.5



#8
 Diethyl Ether
 Concen: 0.371 ug/l
 RT: 2.18 min Scan# 179
 Delta R.T. 0.01 min
 Lab File: VX018073.D
 Acq: 26 Aug 2020 13:39

Tgt Ion: 74 Resp: 1019
 Ion Ratio Lower Upper
 74 100
 45 110.0 50.7 152.3

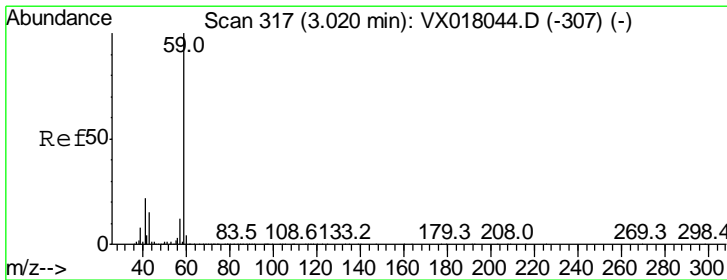
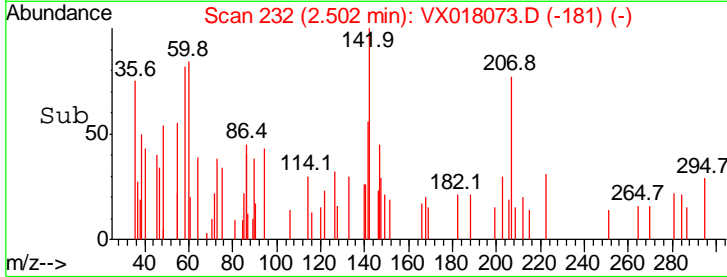
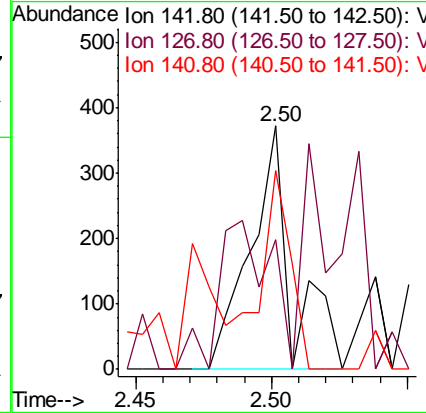
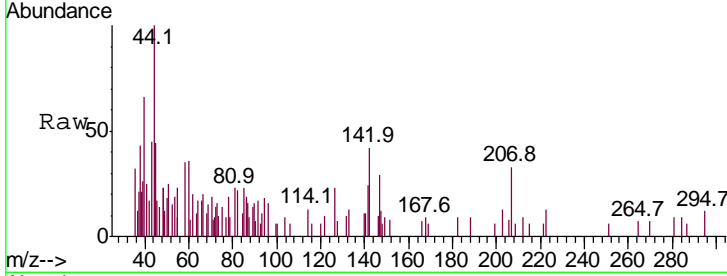




#10
Methyl Iodide
Concen: 5.361 ug/l
RT: 2.50 min Scan# 232
Delta R.T. 0.01 min
Lab File: VX018073.D
Acq: 26 Aug 2020 13:39

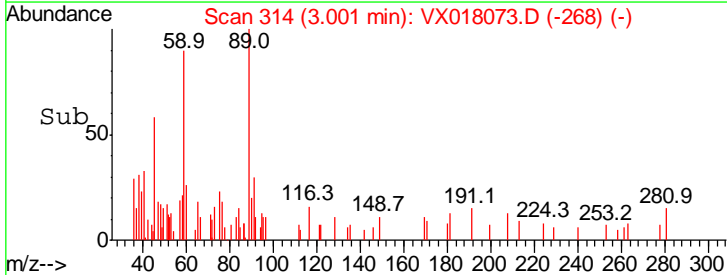
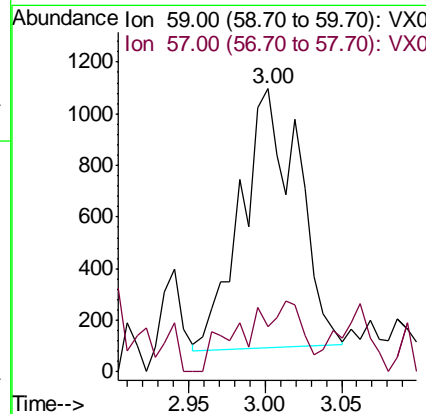
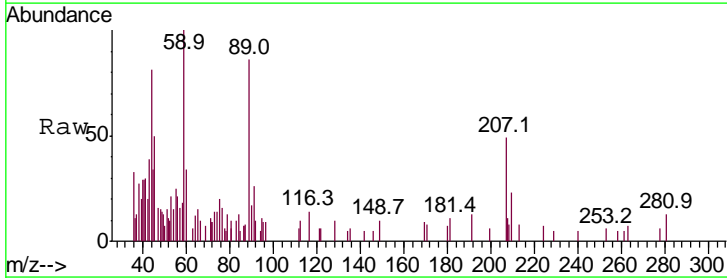
Instrument :
MSVOA_X
ClientSampleId :
PB131195ZHE#04

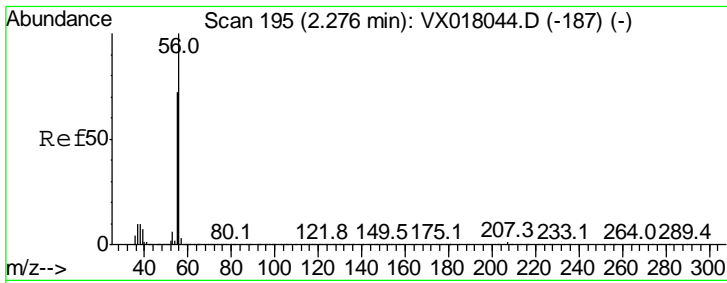
Tgt Ion	Ratio	Lower	Upper
142	100		
127	77.4	37.0	55.6#
141	59.7	11.5	17.3#



#11
Tert butyl alcohol
Concen: 2.075 ug/l
RT: 3.00 min Scan# 314
Delta R.T. -0.02 min
Lab File: VX018073.D
Acq: 26 Aug 2020 13:39

Tgt Ion	Ratio	Lower	Upper
59	100		
57	23.5	8.9	13.3#

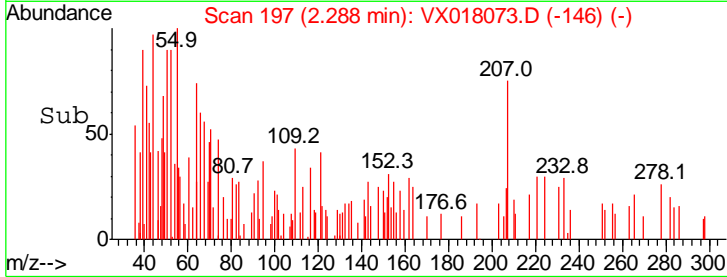
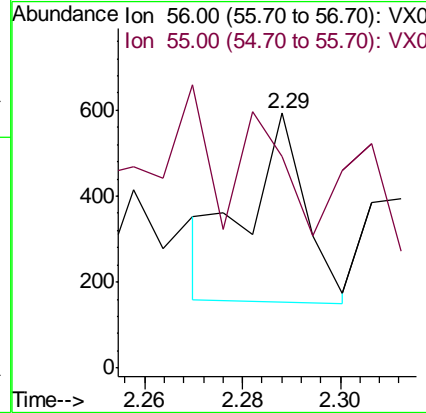
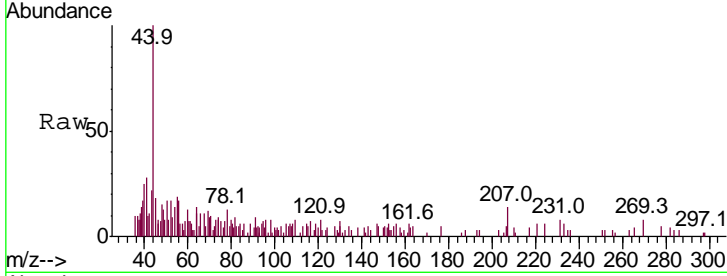




#13
 Acrolein
 Concen: 0.683 ug/l
 RT: 2.29 min Scan# 197
 Delta R.T. 0.01 min
 Lab File: VX018073.D
 Acq: 26 Aug 2020 13:39

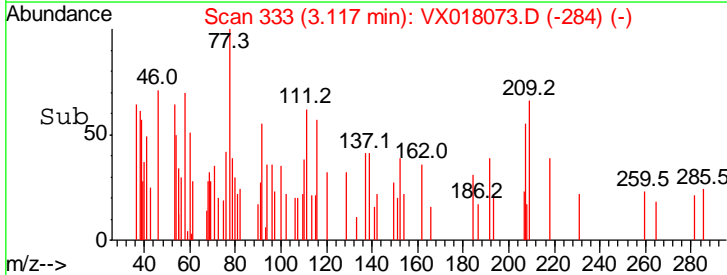
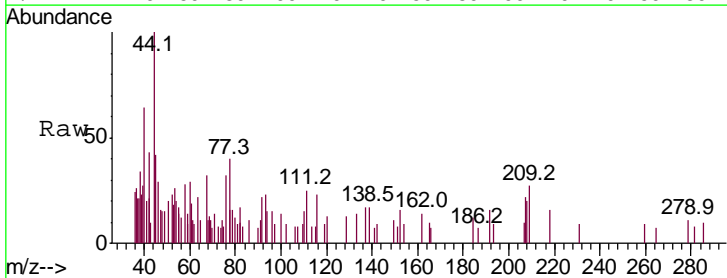
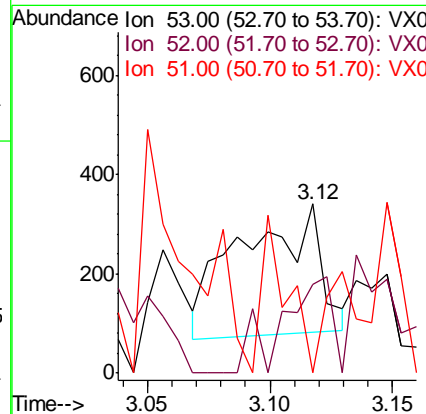
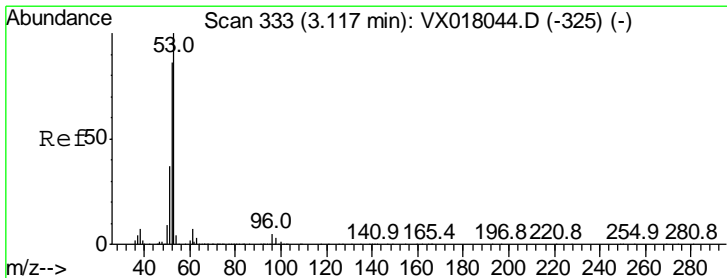
Instrument : MSVOA_X
 ClientSampled : PB131195ZHE#04

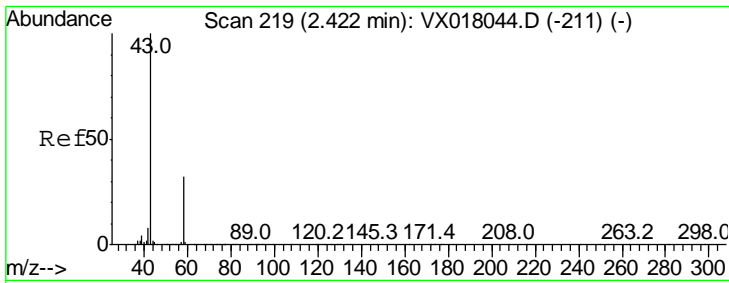
Tgt Ion	Resp	Lower	Upper
56	100		
55	0.0	57.0	85.6#



#15
 Acrylonitrile
 Concen: 0.207 ug/l
 RT: 3.12 min Scan# 333
 Delta R.T. -0.00 min
 Lab File: VX018073.D
 Acq: 26 Aug 2020 13:39

Tgt Ion	Resp	Lower	Upper
53	100		
52	46.6	66.9	100.3#
51	35.4	28.7	43.1

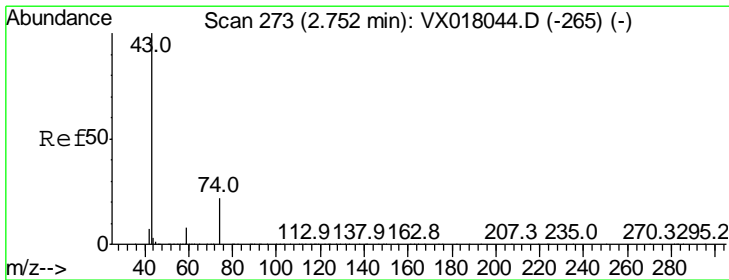
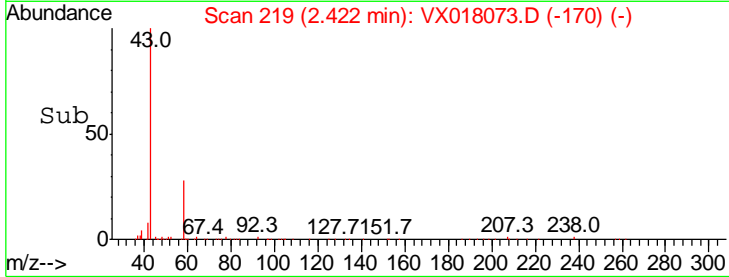
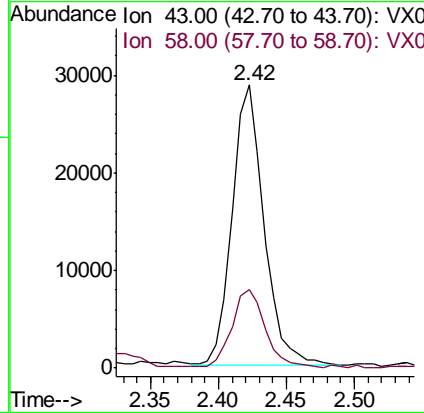
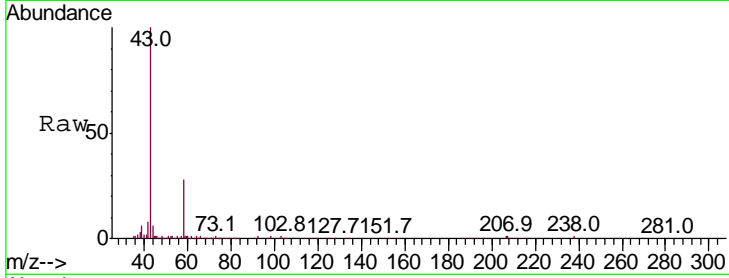




#16
 Acetone
 Concen: 18.477 ug/l
 RT: 2.42 min Scan# 219
 Delta R.T. -0.00 min
 Lab File: VX018073.D
 Acq: 26 Aug 2020 13:39

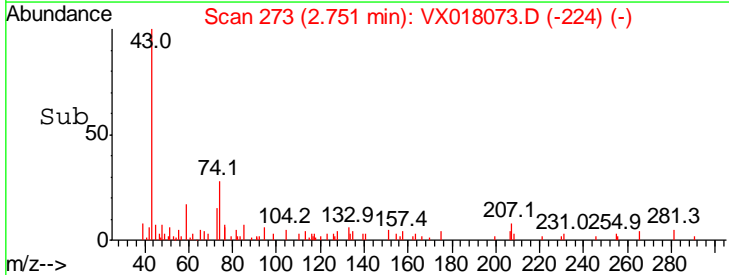
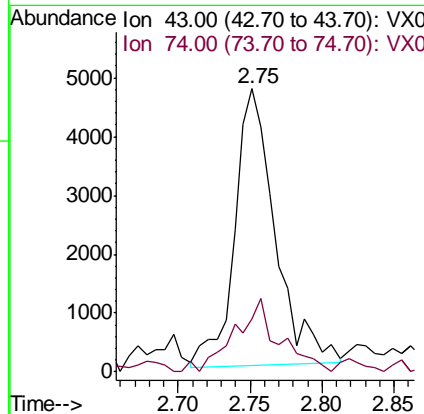
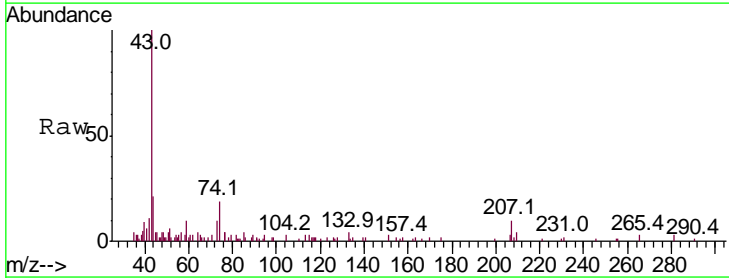
Instrument :
 MSVOA_X
 ClientSampleID :
 PB131195ZHE#04

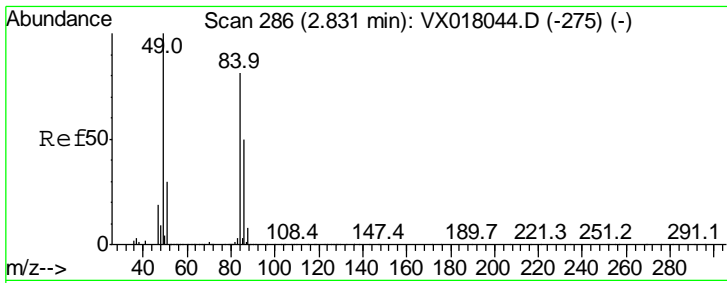
Tgt Ion	Ratio	Lower	Upper
43	100		
58	27.6	25.5	38.3



#18
 Methyl Acetate
 Concen: 1.521 ug/l
 RT: 2.75 min Scan# 273
 Delta R.T. -0.00 min
 Lab File: VX018073.D
 Acq: 26 Aug 2020 13:39

Tgt Ion	Ratio	Lower	Upper
43	100		
74	29.2	18.2	27.4#

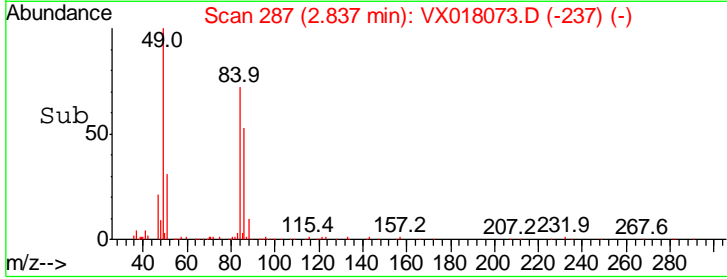
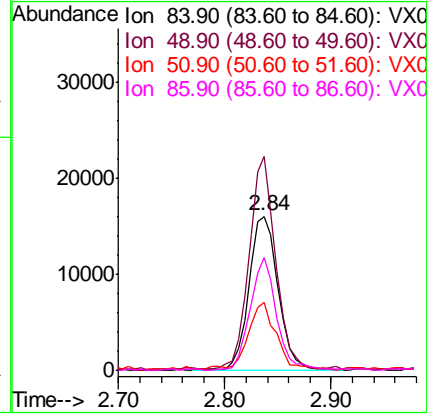
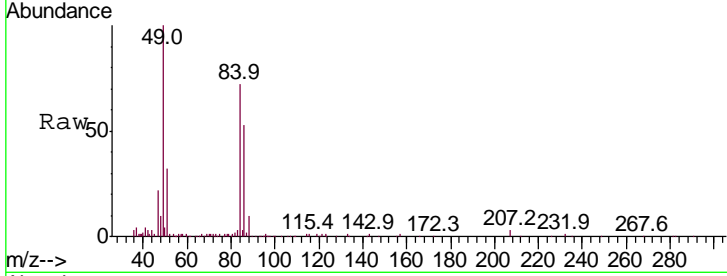




#20
 Methylene Chloride
 Concen: 4.994 ug/l
 RT: 2.84 min Scan# 287
 Delta R.T. 0.01 min
 Lab File: VX018073.D
 Acq: 26 Aug 2020 13:39

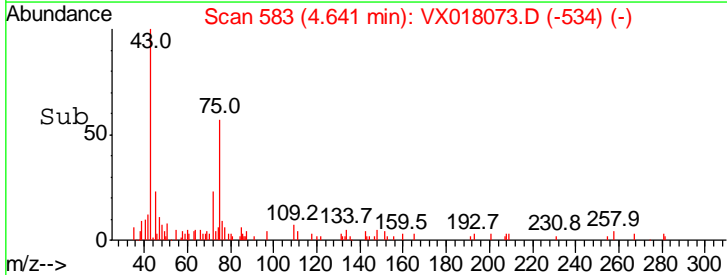
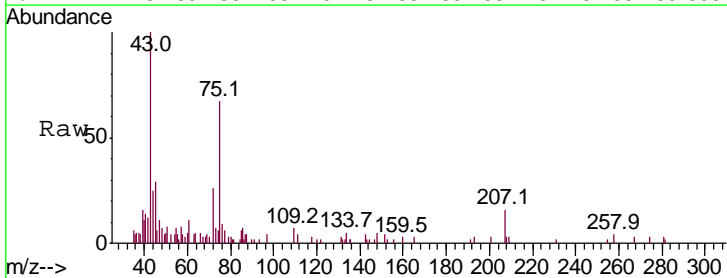
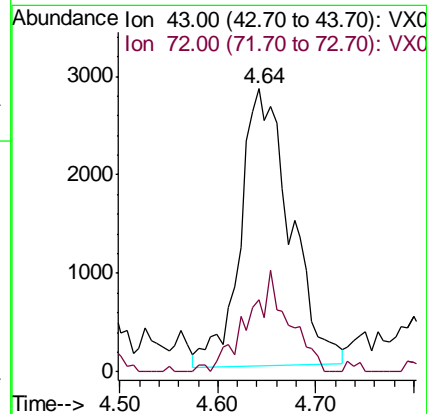
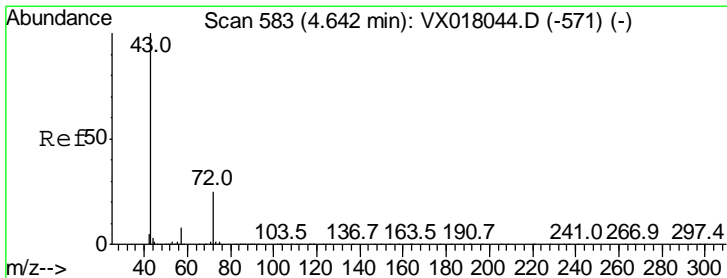
Instrument : MSVOA_X
 ClientSampled : PB131195ZHE#04

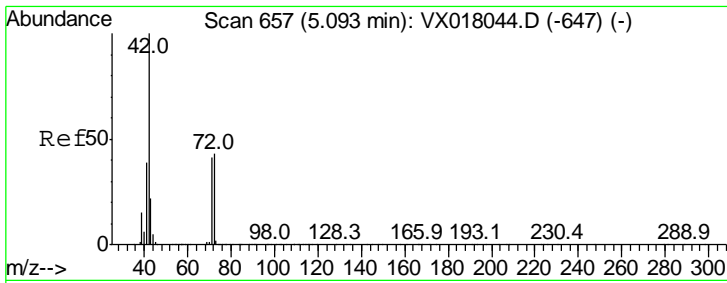
Tgt Ion	Resp	Lower	Upper
84	31049		
84	100		
49	138.1	98.6	148.0
51	43.1	29.6	44.4
86	72.3	49.8	74.6



#25
 2-Butanone
 Concen: 2.426 ug/l
 RT: 4.64 min Scan# 583
 Delta R.T. -0.00 min
 Lab File: VX018073.D
 Acq: 26 Aug 2020 13:39

Tgt Ion	Resp	Lower	Upper
43	10013		
43	100		
72	27.1	19.8	29.6

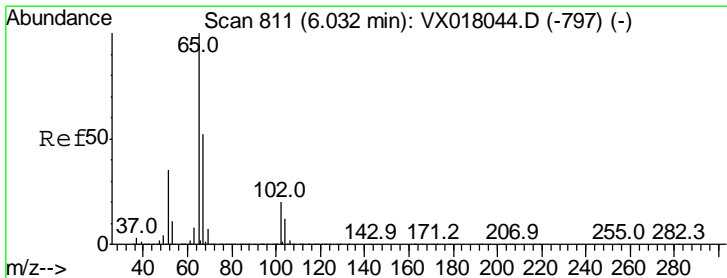
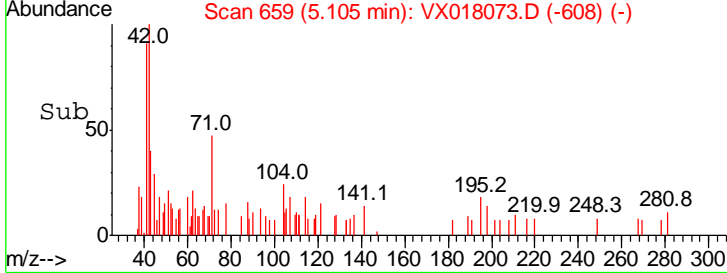
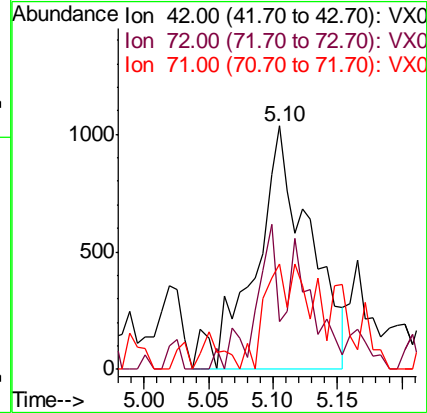
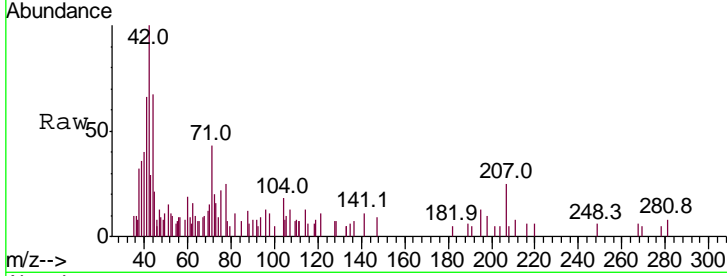




#29
 Tetrahydrofuran
 Concen: 1.156 ug/l
 RT: 5.10 min Scan# 659
 Delta R.T. 0.01 min
 Lab File: VX018073.D
 Acq: 26 Aug 2020 13:39

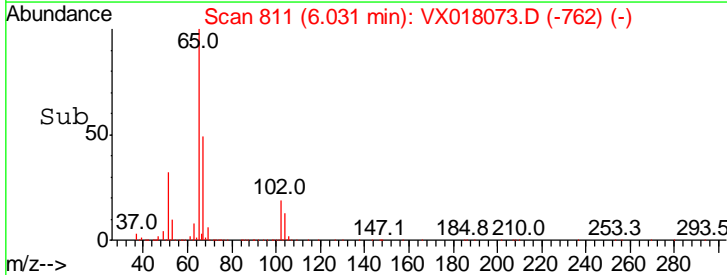
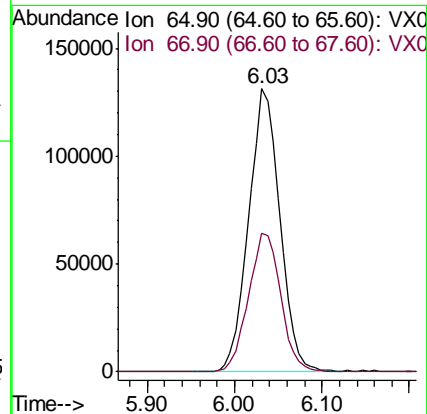
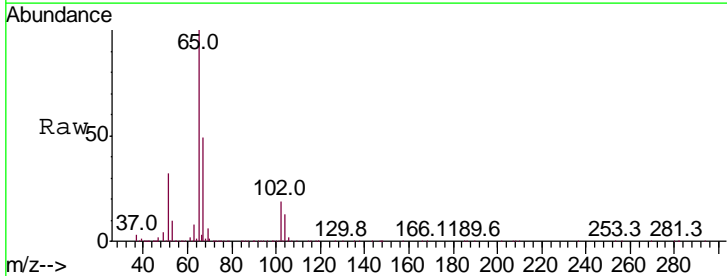
Instrument :
 MSVOA_X
 ClientSampled :
 PB131195ZHE#04

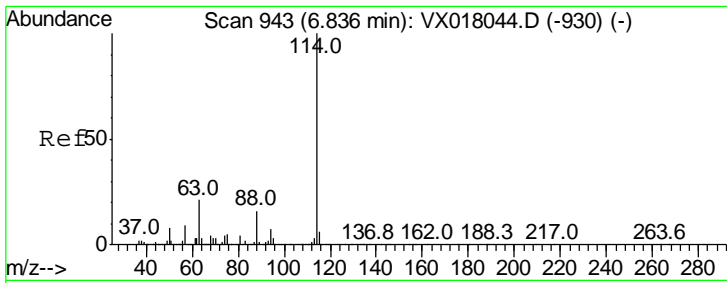
Tgt Ion	Ratio	Lower	Upper
42	100		
72	23.4	34.2	51.4#
71	18.2	32.1	48.1#



#33
 1,2-Dichloroethane-d4
 Concen: 50.530 ug/l
 RT: 6.03 min Scan# 811
 Delta R.T. -0.00 min
 Lab File: VX018073.D
 Acq: 26 Aug 2020 13:39

Tgt Ion	Ratio	Lower	Upper
65	100		
67	51.0	0.0	105.8

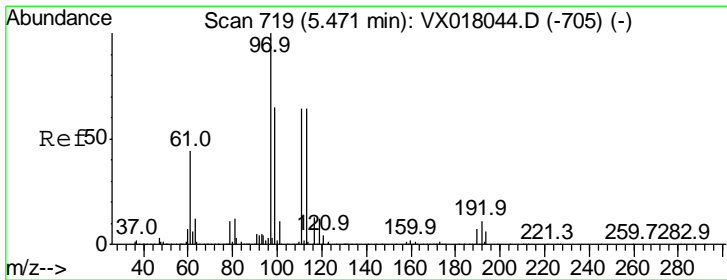
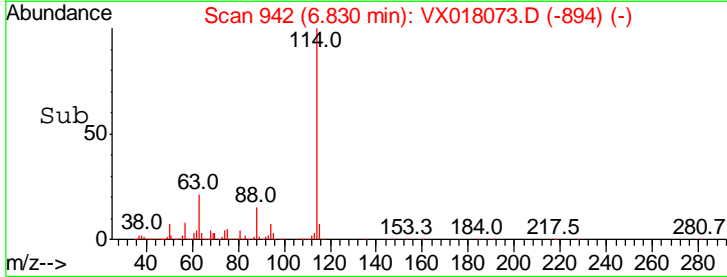
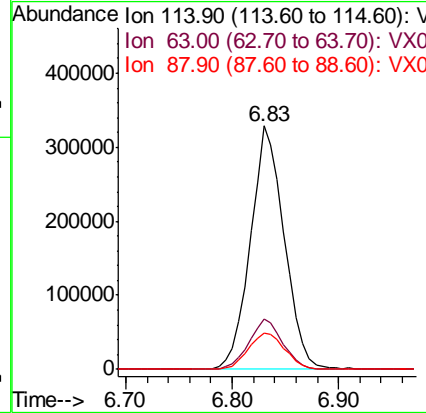
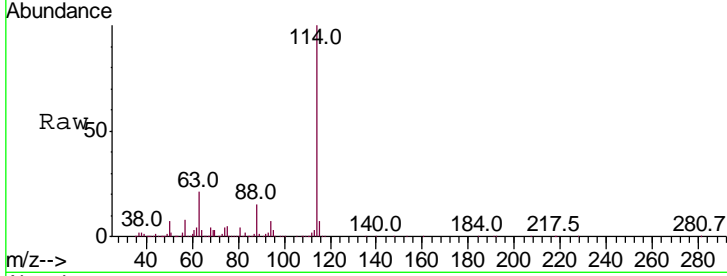




#34
 1,4-Difluorobenzene
 Concen: 50.000 ug/l
 RT: 6.83 min Scan# 942
 Delta R.T. -0.01 min
 Lab File: VX018073.D
 Acq: 26 Aug 2020 13:39

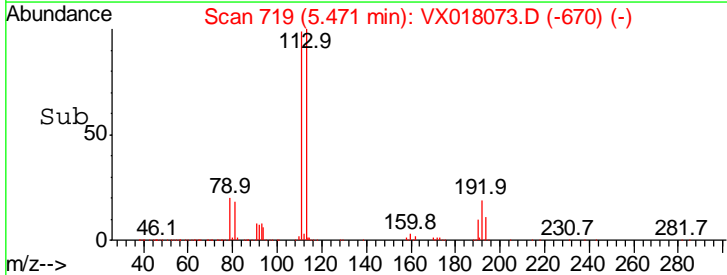
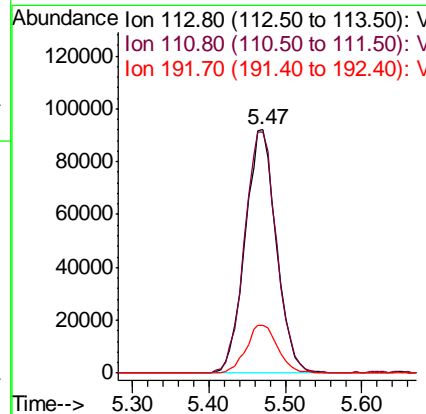
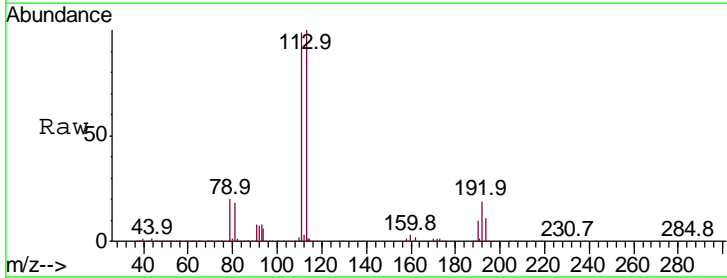
Instrument : MSVOA_X
 ClientSampleId : PB131195ZHE#04

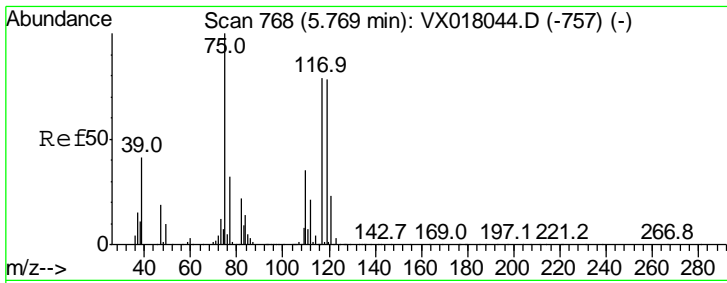
Tgt Ion	Resp	Lower	Upper
114	100		
63	20.7	0.0	42.6
88	14.9	0.0	31.8



#35
 Dibromofluoromethane
 Concen: 52.292 ug/l
 RT: 5.47 min Scan# 719
 Delta R.T. -0.00 min
 Lab File: VX018073.D
 Acq: 26 Aug 2020 13:39

Tgt Ion	Resp	Lower	Upper
113	100		
111	101.6	81.6	122.4
192	20.0	15.8	23.8

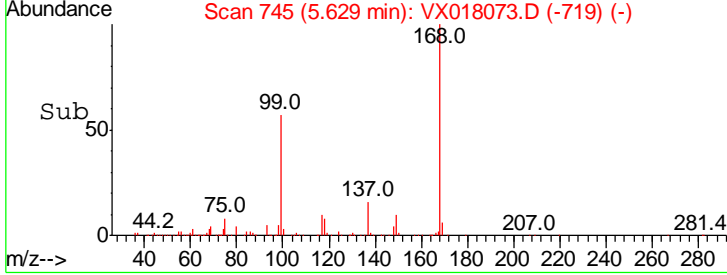
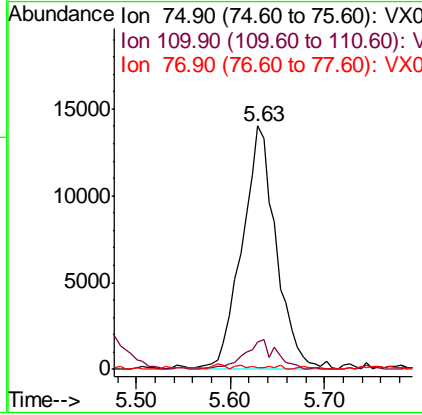
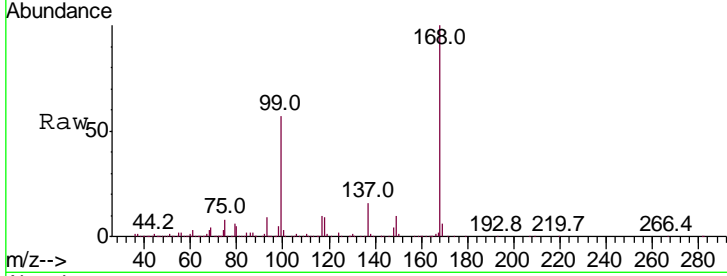




#36
 1,1-Dichloropropene
 Concen: 5.275 ug/l
 RT: 5.63 min Scan# 745
 Delta R.T. -0.14 min
 Lab File: VX018073.D
 Acq: 26 Aug 2020 13:39

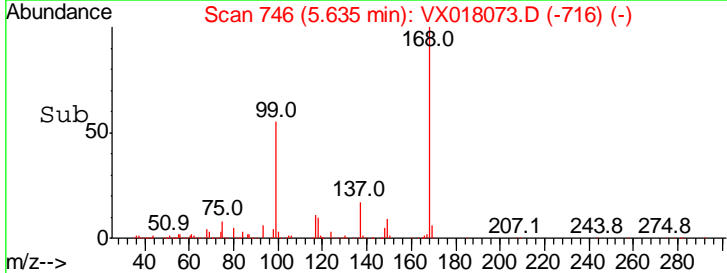
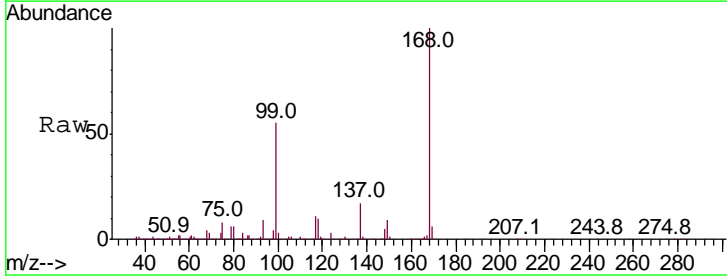
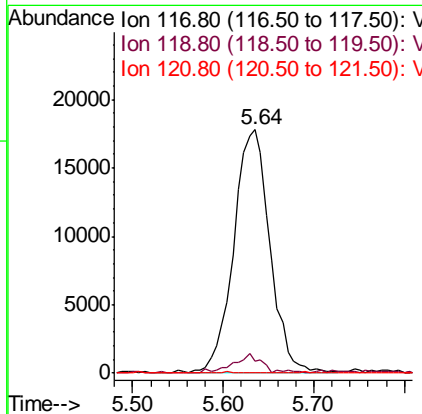
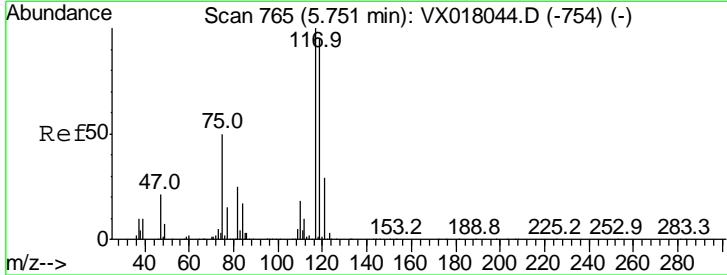
Instrument : MSVOA_X
 ClientSampleID : PB131195ZHE#04

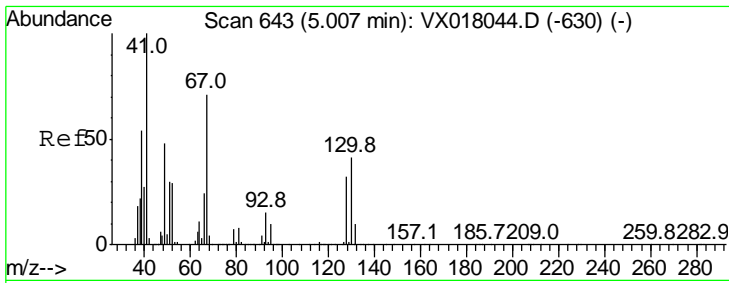
Tgt Ion	Resp	Lower	Upper
75	100		
110	11.3	18.0	54.0#
77	0.0	24.4	36.6#



#38
 Carbon Tetrachloride
 Concen: 6.424 ug/l
 RT: 5.64 min Scan# 746
 Delta R.T. -0.12 min
 Lab File: VX018073.D
 Acq: 26 Aug 2020 13:39

Tgt Ion	Resp	Lower	Upper
117	100		
119	5.1	75.8	113.6#
121	0.0	23.4	35.0#

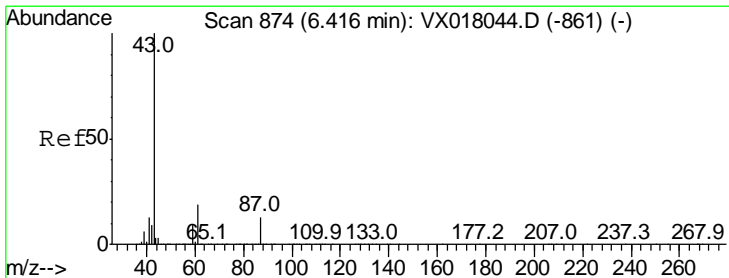
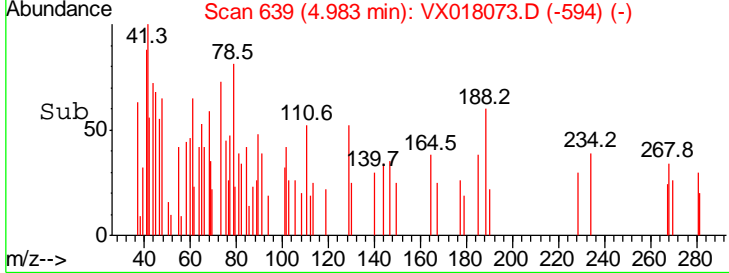
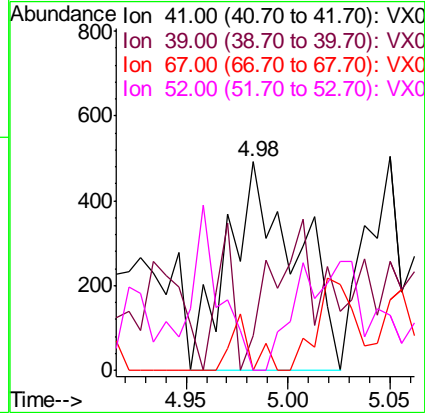
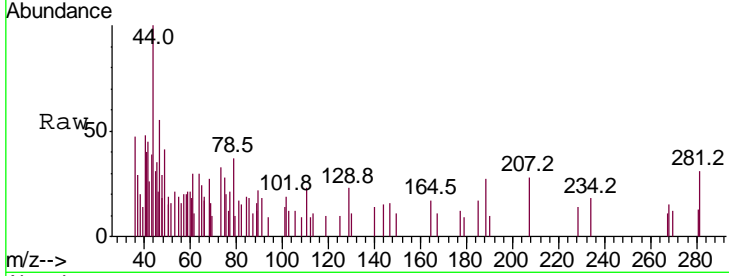




#41
 Methacrylonitrile
 Concen: 0.266 ug/l
 RT: 4.98 min Scan# 639
 Delta R.T. -0.02 min
 Lab File: VX018073.D
 Acq: 26 Aug 2020 13:39

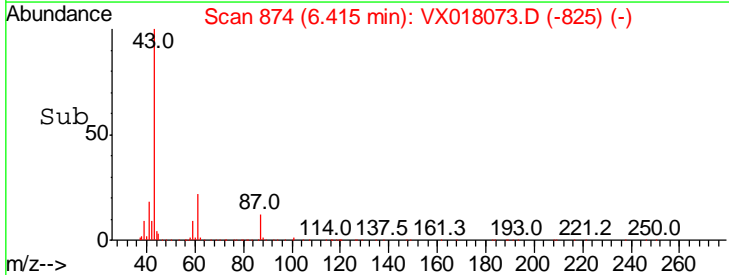
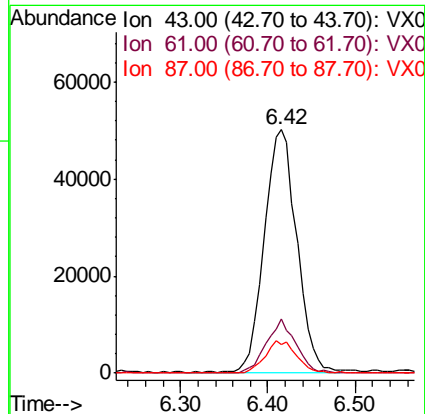
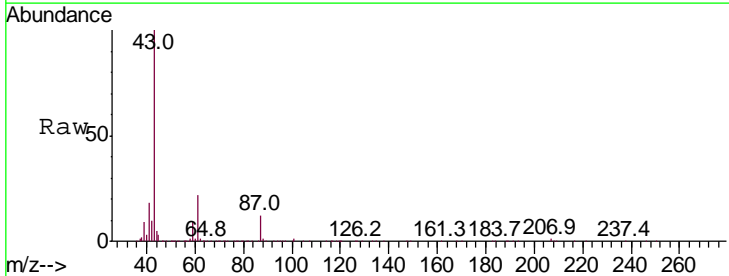
Instrument :
 MSVOA_X
 ClientSampleId :
 PB131195ZHE#04

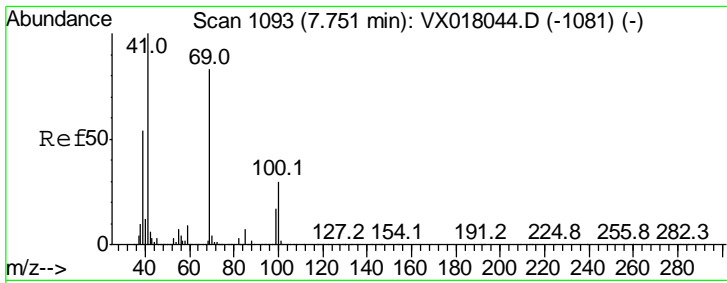
Tgt Ion	Resp	Lower	Upper
41	100		
39	17.0	43.1	64.7#
67	8.0	56.0	84.0#
52	0.0	22.7	34.1#



#43
 Isopropyl Acetate
 Concen: 10.290 ug/l
 RT: 6.42 min Scan# 874
 Delta R.T. -0.00 min
 Lab File: VX018073.D
 Acq: 26 Aug 2020 13:39

Tgt Ion	Resp	Lower	Upper
43	100		
61	19.6	15.7	23.5
87	12.8	10.3	15.5

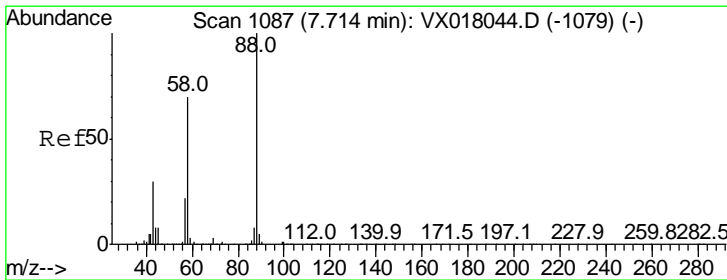
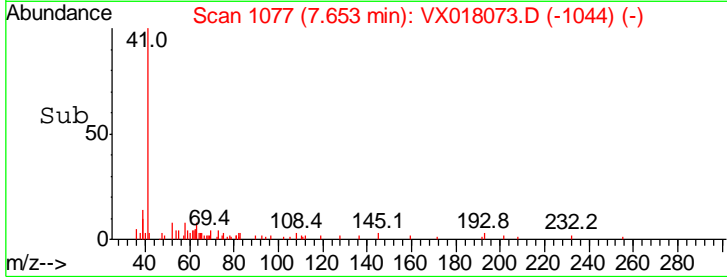
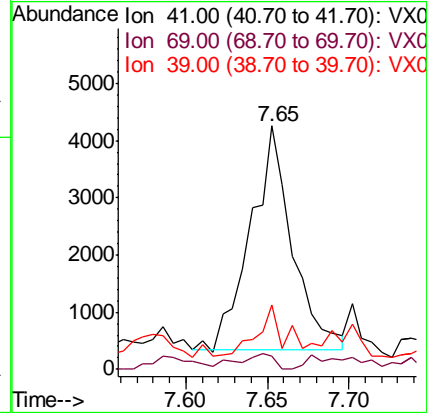
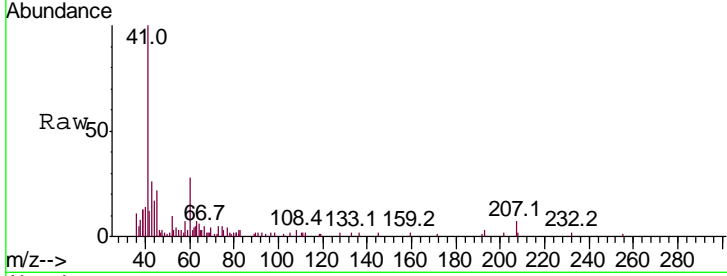




#48
 Methyl methacrylate
 Concen: 1.100 ug/l
 RT: 7.65 min Scan# 1077
 Delta R.T. -0.10 min
 Lab File: VX018073.D
 Acq: 26 Aug 2020 13:39

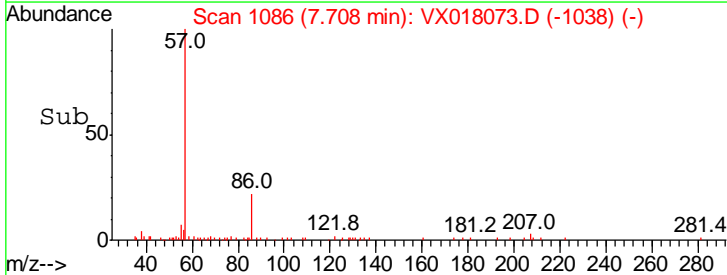
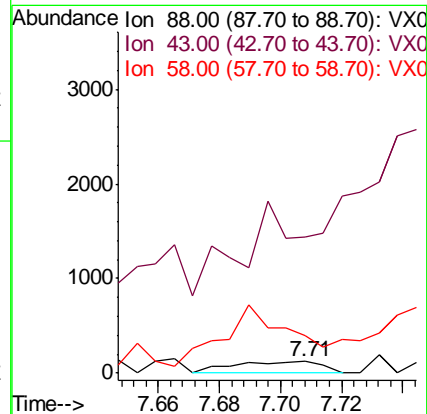
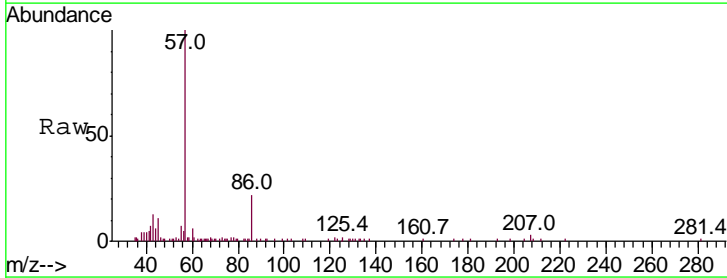
Instrument :
 MSVOA_X
 ClientSampleId :
 PB131195ZHE#04

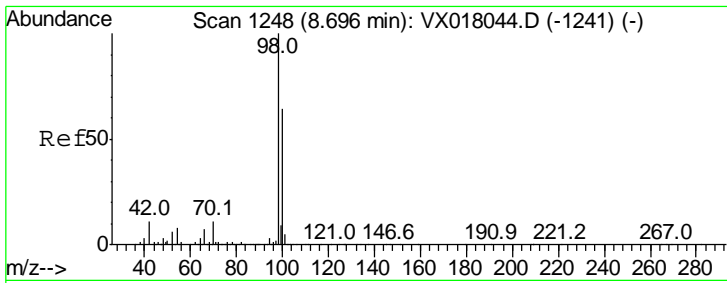
Tgt Ion	Ratio	Lower	Upper
41	100		
69	6.1	65.5	98.3#
39	0.0	44.5	66.7#



#49
 1,4-Dioxane
 Concen: 2.163 ug/l
 RT: 7.71 min Scan# 1086
 Delta R.T. -0.01 min
 Lab File: VX018073.D
 Acq: 26 Aug 2020 13:39

Tgt Ion	Ratio	Lower	Upper
88	100		
43	0.0	27.4	41.0#
58	413.0	56.4	84.6#

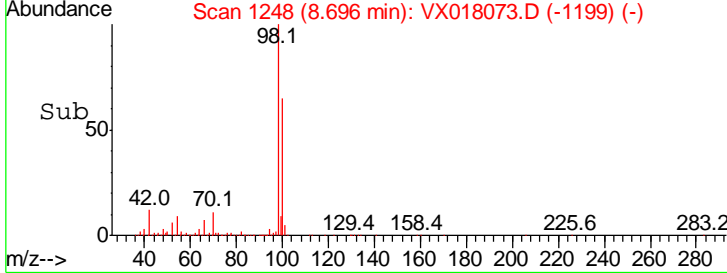
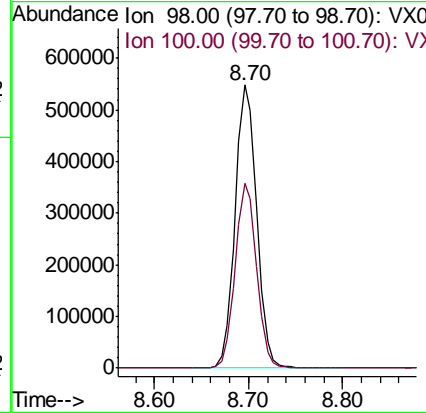
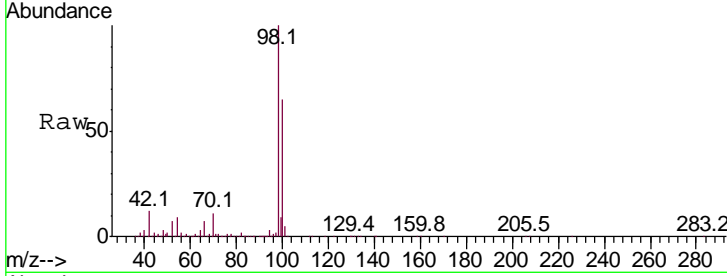




#50
 Toluene-d8
 Concen: 46.891 ug/l
 RT: 8.70 min Scan# 1248
 Delta R.T. -0.00 min
 Lab File: VX018073.D
 Acq: 26 Aug 2020 13:39

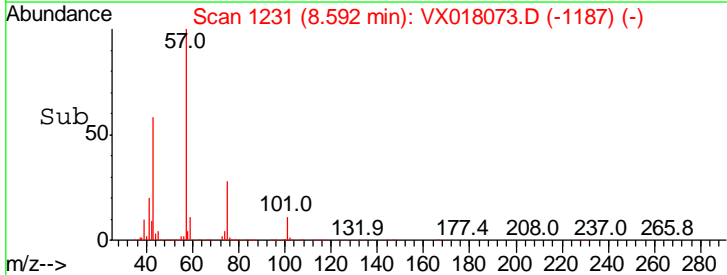
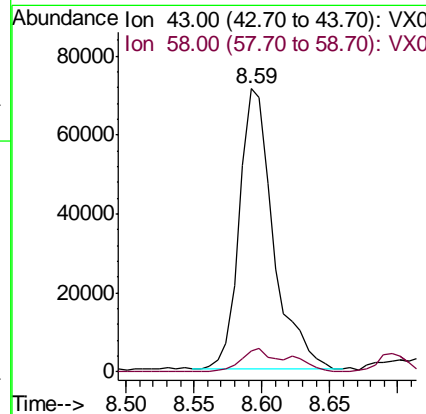
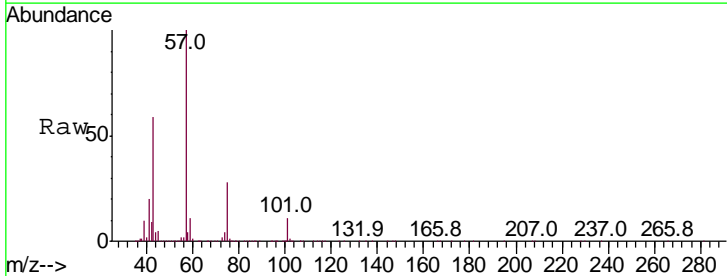
Instrument : MSVOA_X
 ClientSampled : PB131195ZHE#04

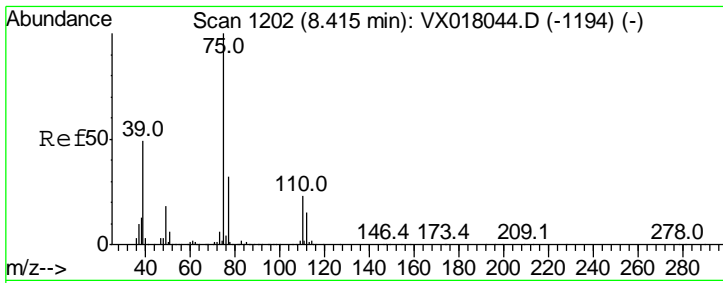
Tgt Ion	Resp	Lower	Upper
98	100		
100	64.6	52.2	78.4



#51
 4-Methyl-2-Pentanone
 Concen: 15.827 ug/l
 RT: 8.59 min Scan# 1231
 Delta R.T. -0.03 min
 Lab File: VX018073.D
 Acq: 26 Aug 2020 13:39

Tgt Ion	Resp	Lower	Upper
43	100		
58	8.3	30.7	46.1#

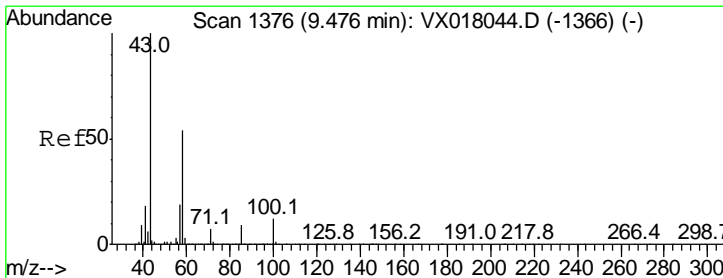
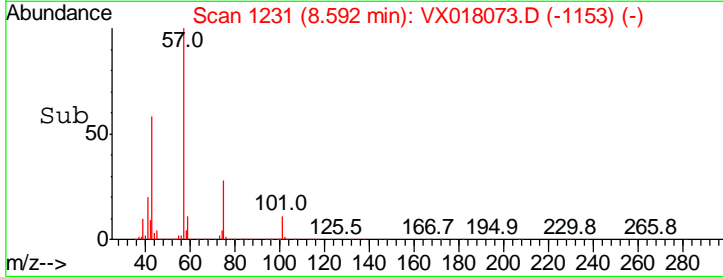
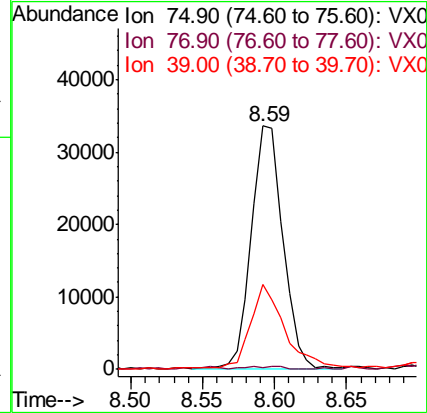
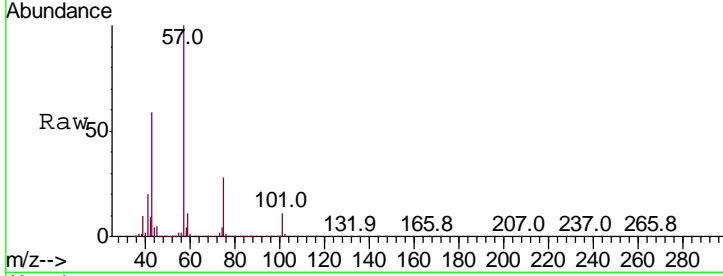




#54
 cis-1,3-Dichloropropene
 Concen: 5.748 ug/l
 RT: 8.59 min Scan# 1231
 Delta R.T. 0.18 min
 Lab File: VX018073.D
 Acq: 26 Aug 2020 13:39

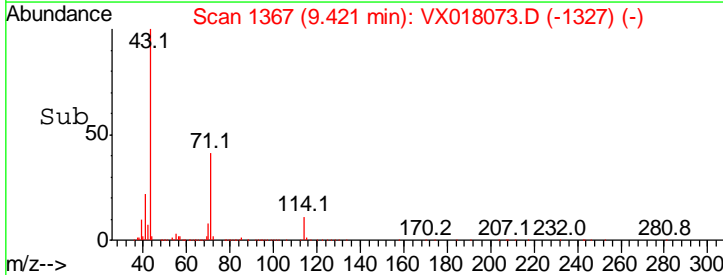
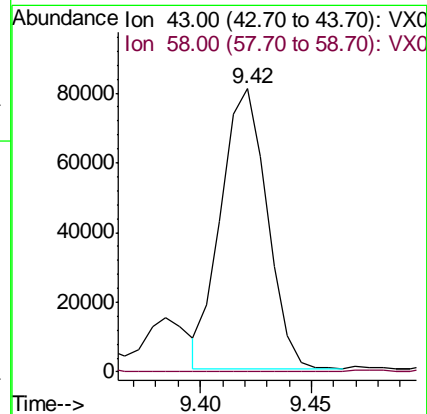
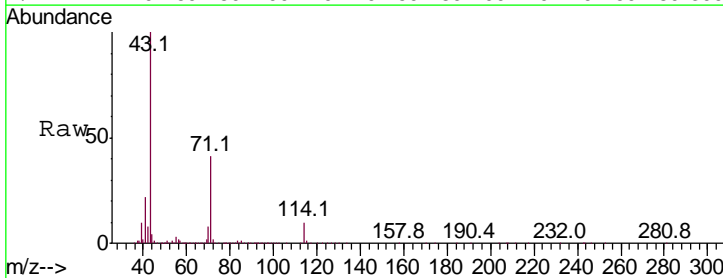
Instrument :
 MSVOA_X
 ClientSampleId :
 PB131195ZHE#04

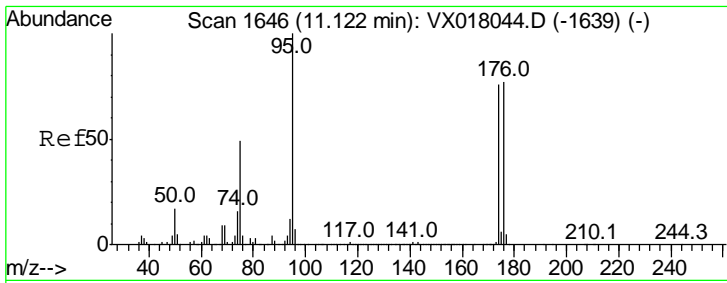
Tgt Ion	Resp	Lower	Upper
75	100		
77	0.7	25.8	38.8#
39	34.6	38.8	58.2#



#59
 2-Hexanone
 Concen: 19.423 ug/l
 RT: 9.42 min Scan# 1367
 Delta R.T. -0.06 min
 Lab File: VX018073.D
 Acq: 26 Aug 2020 13:39

Tgt Ion	Resp	Lower	Upper
43	100		
58	0.0	26.6	79.7#

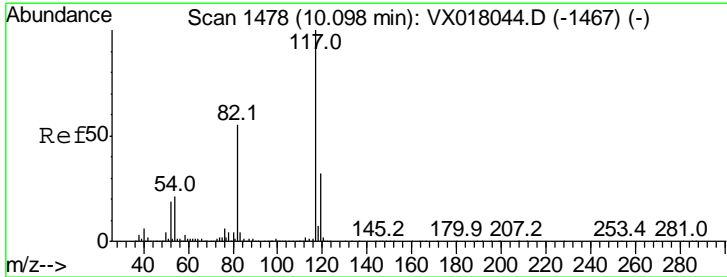
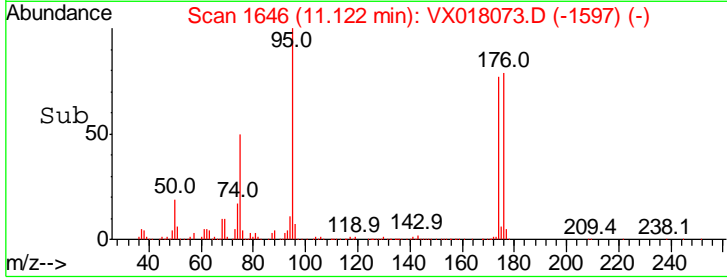
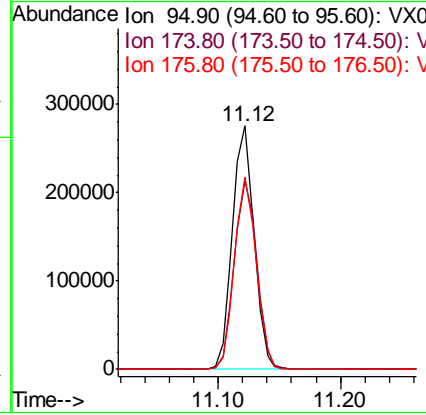
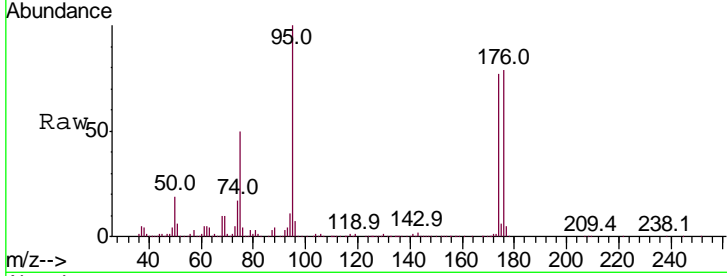




#62
 4-Bromofluorobenzene
 Concen: 46.129 ug/l
 RT: 11.12 min Scan# 1646
 Delta R.T. -0.00 min
 Lab File: VX018073.D
 Acq: 26 Aug 2020 13:39

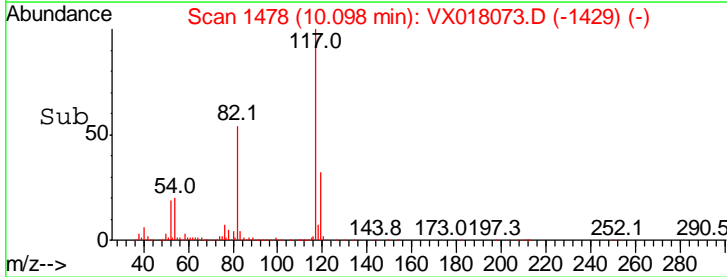
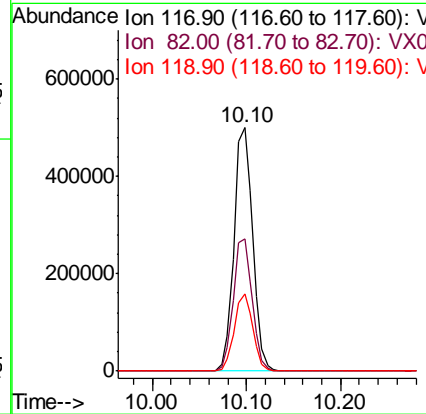
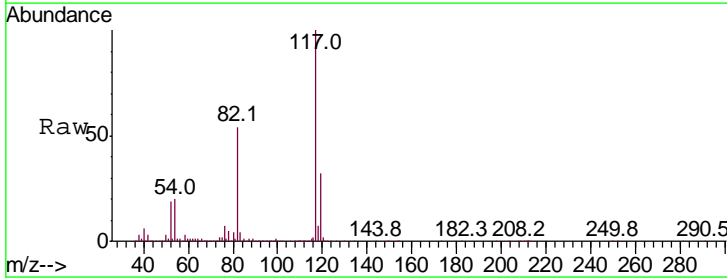
Instrument :
 MSVOA_X
 ClientSampled :
 PB131195ZHE#04

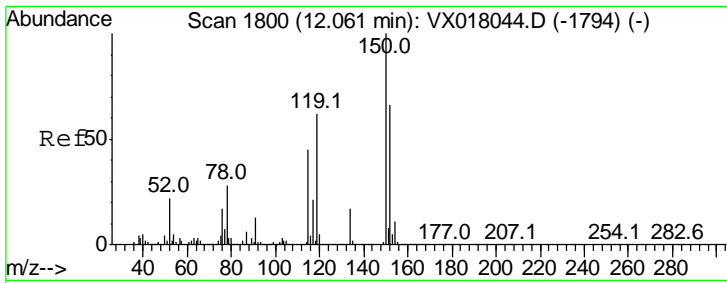
Tgt Ion	Resp	Lower	Upper
95	100		
174	80.8	0.0	160.2
176	78.9	0.0	155.8



#63
 Chlorobenzene-d5
 Concen: 50.000 ug/l
 RT: 10.10 min Scan# 1478
 Delta R.T. -0.00 min
 Lab File: VX018073.D
 Acq: 26 Aug 2020 13:39

Tgt Ion	Resp	Lower	Upper
117	100		
82	54.1	44.2	66.2
119	31.9	25.7	38.5

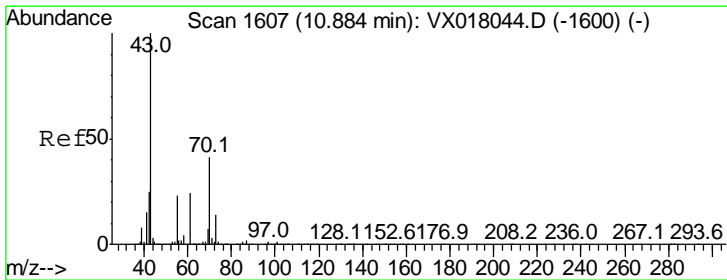
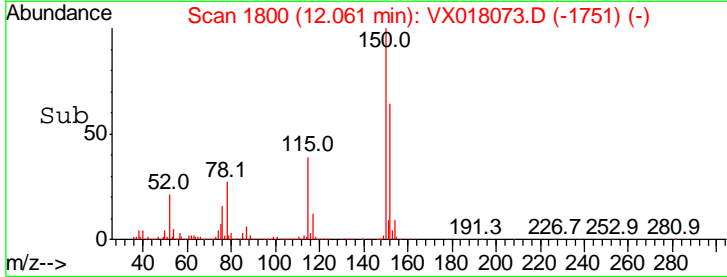
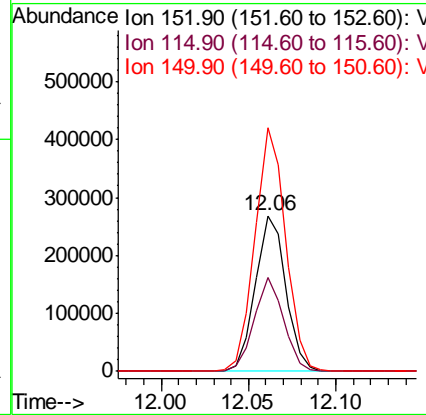
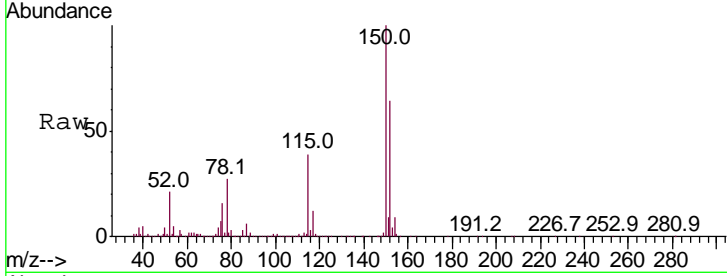




#72
 1,4-Dichlorobenzene-d4
 Concen: 50.000 ug/l
 RT: 12.06 min Scan# 1800
 Delta R.T. -0.00 min
 Lab File: VX018073.D
 Acq: 26 Aug 2020 13:39

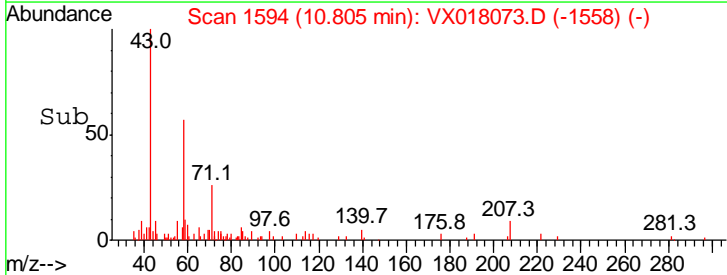
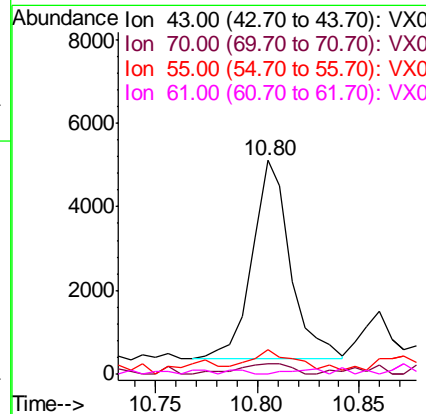
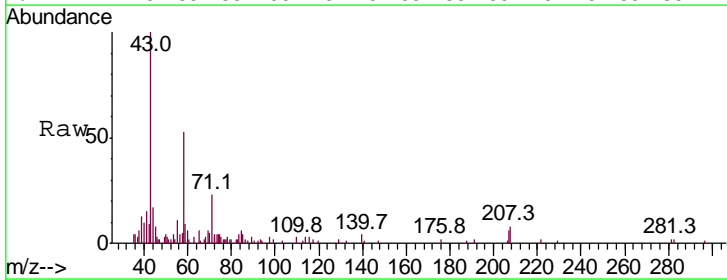
Instrument :
 MSVOA_X
 ClientSampled :
 PB131195ZHE#04

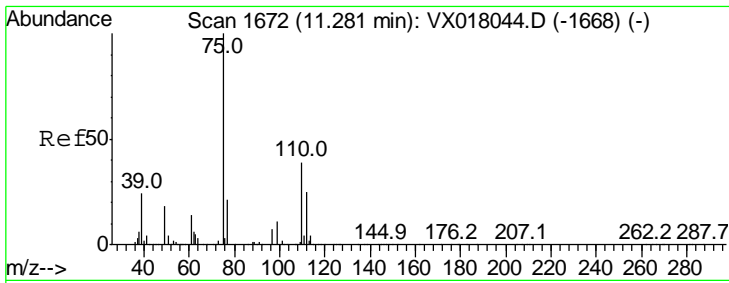
Tgt Ion	Resp	Lower	Upper
152	100		
115	58.5	41.5	124.5
150	157.6	0.0	343.8



#74
 N-amyl acetate
 Concen: 0.609 ug/l
 RT: 10.80 min Scan# 1594
 Delta R.T. -0.08 min
 Lab File: VX018073.D
 Acq: 26 Aug 2020 13:39

Tgt Ion	Resp	Lower	Upper
43	100		
70	6.9	32.3	48.5#
55	10.4	18.2	27.2#
61	0.0	18.9	28.3#

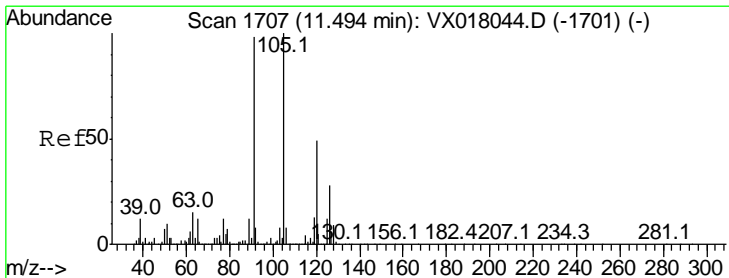
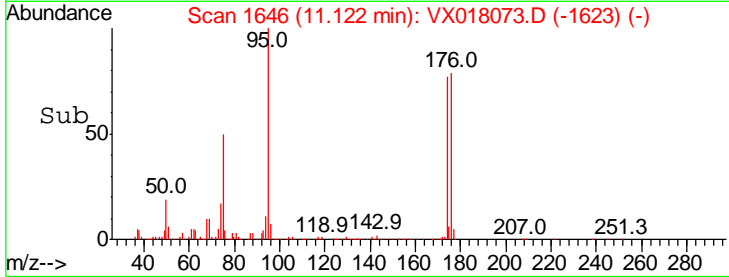
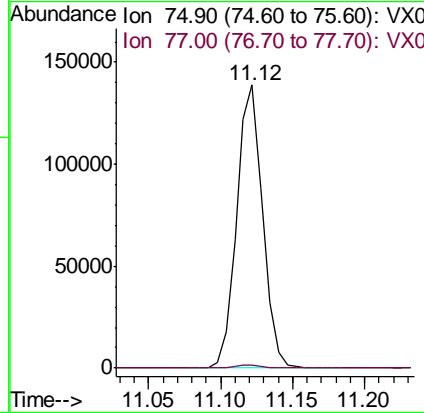
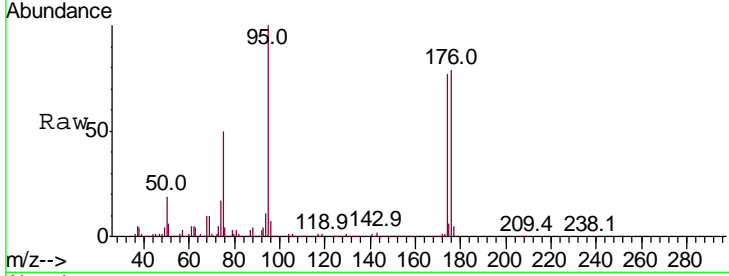




#76
 1,2,3-Trichloropropane
 Concen: 24.134 ug/l
 RT: 11.12 min Scan# 1646
 Delta R.T. -0.16 min
 Lab File: VX018073.D
 Acq: 26 Aug 2020 13:39

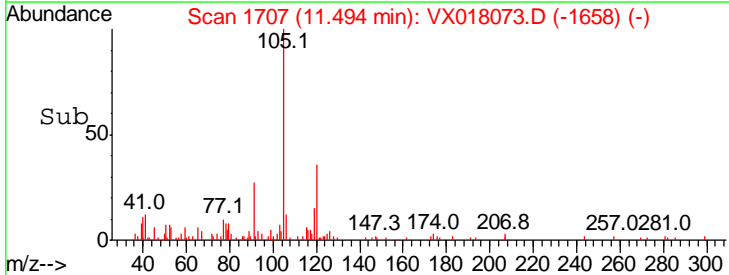
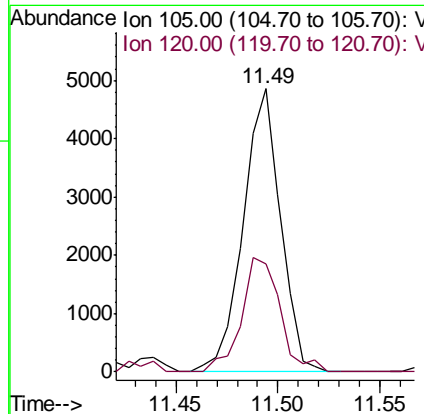
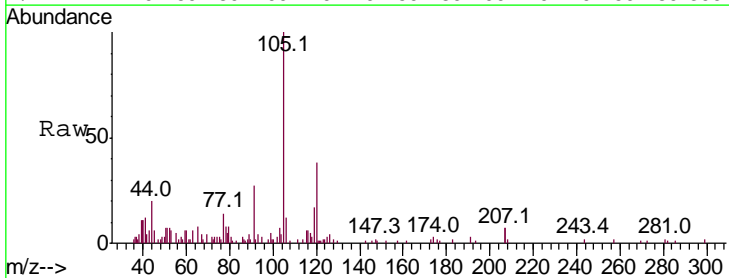
Instrument :
 MSVOA_X
 ClientSampled :
 PB131195ZHE#04

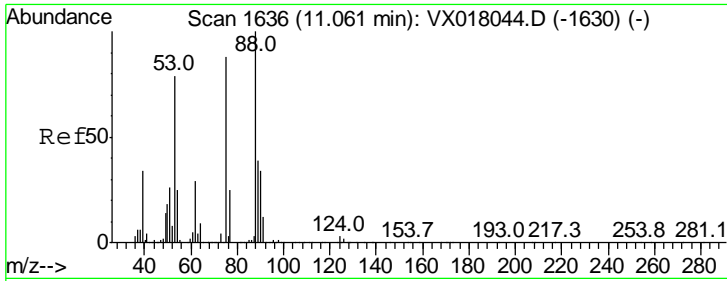
Tgt Ion: 75 Resp: 174664
 Ion Ratio Lower Upper
 75 100
 77 1.3 20.8 62.2#



#80
 1,3,5-Trimethylbenzene
 Concen: 0.350 ug/l
 RT: 11.49 min Scan# 1707
 Delta R.T. -0.00 min
 Lab File: VX018073.D
 Acq: 26 Aug 2020 13:39

Tgt Ion: 105 Resp: 6177
 Ion Ratio Lower Upper
 105 100
 120 41.6 24.1 72.2





#81
 trans-1,4-Dichloro-2-butene
 Concen: 65.183 ug/l
 RT: 11.12 min Scan# 1646
 Delta R.T. 0.06 min
 Lab File: VX018073.D
 Acq: 26 Aug 2020 13:39

Instrument : MSVOA_X
 ClientSampleId : PB131195ZHE#04

Tot Ion	Resp	Lower	Upper
75	174664		
Ion Ratio			
75	100		
53	0.3	74.7	112.1#
89	0.1	36.6	54.8#

