

Data Path : Z:\VOASRV\HPCHEM1\MSVOA X\DATA\VX082620\
 Data File : VX018084.D
 Acq On : 26 Aug 2020 17:51
 Operator : JC/SP
 Sample : L3784-11
 Misc : 5.0mL/MSVOA X/WATER
 ALS Vial : 21 Sample Multiplier: 1

Instrument :
 MSVOA_X
 ClientSampleId :
 RO-24

Quant Time: Aug 27 04:06:25 2020
 Quant Method : Z:\VOASRV\HPCHEM1\MSVOA_X\METHOD\82X082120W.M
 Quant Title : SW846 8260
 QLast Update : Fri Aug 21 03:03:56 2020
 Response via : Initial Calibration

Internal Standards	R.T.	QIon	Response	Conc	Units	Dev(Min)
1) Pentafluorobenzene	5.63	168	453737	50.00	ug/l	0.00
34) 1,4-Difluorobenzene	6.84	114	741262	50.00	ug/l	0.00
63) Chlorobenzene-d5	10.10	117	725166	50.00	ug/l	0.00
72) 1,4-Dichlorobenzene-d4	12.06	152	330208	50.00	ug/l	0.00

System Monitoring Compounds

33) 1,2-Dichloroethane-d4	6.03	65	325465	51.67	ug/l	0.00
Spiked Amount	50.000		Recovery	=	103.34%	
35) Dibromofluoromethane	5.47	113	253887	50.29	ug/l	0.00
Spiked Amount	50.000		Recovery	=	100.58%	
50) Toluene-d8	8.70	98	931395	49.53	ug/l	0.00
Spiked Amount	50.000		Recovery	=	99.06%	
62) 4-Bromofluorobenzene	11.12	95	341652	46.18	ug/l	0.00
Spiked Amount	50.000		Recovery	=	92.36%	

Target Compounds

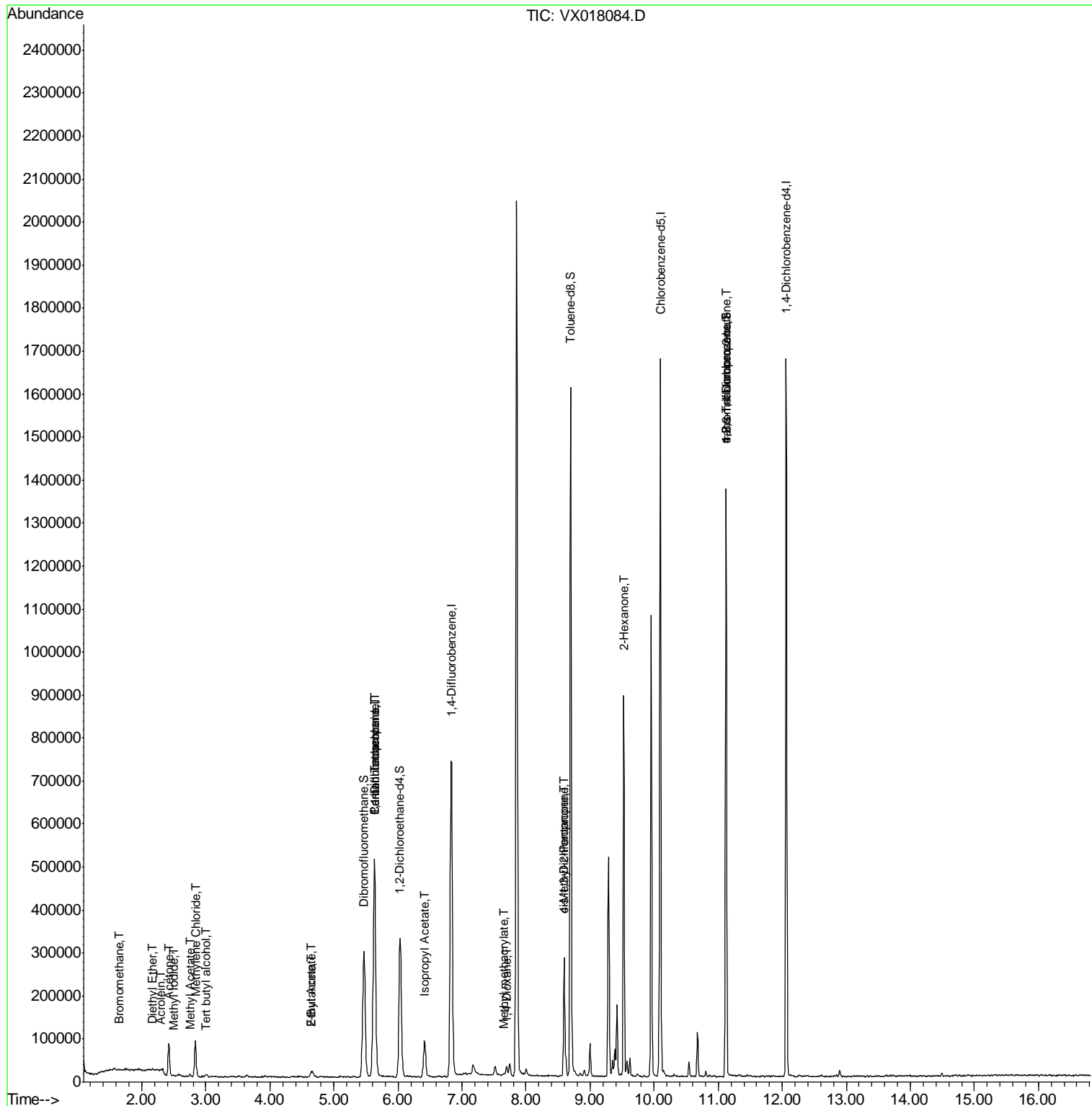
						Qvalue
5) Bromomethane	1.65	94	695	0.249	ug/l #	33
8) Diethyl Ether	2.17	74	1293	0.482	ug/l	65
10) Methyl Iodide	2.50	142	252	5.336	ug/l #	71
11) Tert butyl alcohol	3.01	59	4614	3.767	ug/l #	87
13) Acrolein	2.29	56	688	1.355	ug/l #	14
16) Acetone	2.42	43	82972	33.804	ug/l	95
18) Methyl Acetate	2.75	43	6953	1.174	ug/l #	77
20) Methylene Chloride	2.84	84	38608	6.681	ug/l	98
25) 2-Butanone	4.65	43	11982	2.970	ug/l #	88
36) 1,1-Dichloropropene	5.63	75	33374	4.881	ug/l #	53
37) Ethyl Acetate	4.65	43	11909	1.500	ug/l #	79
38) Carbon Tetrachloride	5.63	117	47420	6.154	ug/l #	18
43) Isopropyl Acetate	6.42	43	111549	8.697	ug/l	99
48) Methyl methacrylate	7.65	41	7173	1.123	ug/l #	18
49) 1,4-Dioxane	7.70	88	246	2.127	ug/l #	1
51) 4-Methyl-2-Pentanone	8.60	43	104412	13.179	ug/l #	46
54) cis-1,3-Dichloropropene	8.60	75	44000	4.929	ug/l #	59
59) 2-Hexanone	9.52	43	97733	16.223	ug/l #	55
76) 1,2,3-Trichloropropane	11.12	75	175170	23.847	ug/l #	36
81) trans-1,4-Dichloro-2-buten	11.12	75	175170	64.407	ug/l #	12

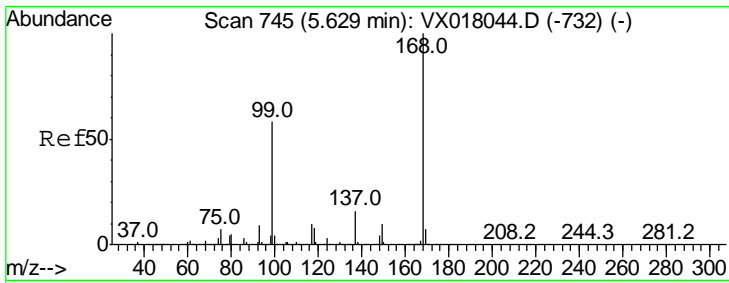
(#) = qualifier out of range (m) = manual integration (+) = signals summed

Data Path : Z:\VOASRV\HPCHEM1\MSVOA X\DATA\VX082620\
 Data File : VX018084.D
 Acq On : 26 Aug 2020 17:51
 Operator : JC/SP
 Sample : L3784-11
 Misc : 5.0mL/MSVOA X/WATER
 ALS Vial : 21 Sample Multiplier: 1

Instrument :
 MSVOA_X
 ClientSampleId :
 RO-24

Quant Time: Aug 27 04:06:25 2020
 Quant Method : Z:\VOASRV\HPCHEM1\MSVOA_X\METHOD\82X082120W.M
 Quant Title : SW846 8260
 QLast Update : Fri Aug 21 03:03:56 2020
 Response via : Initial Calibration

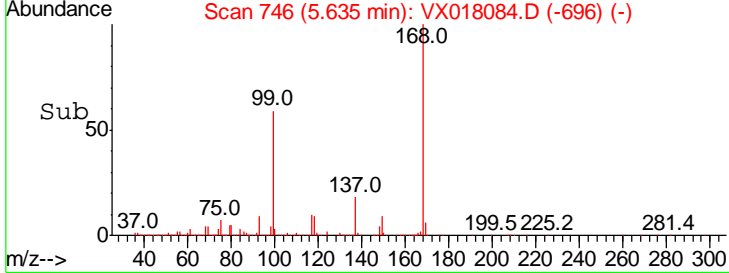
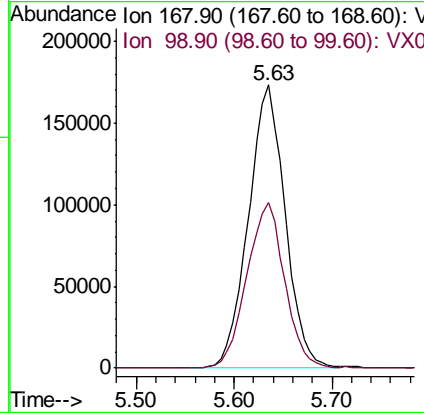
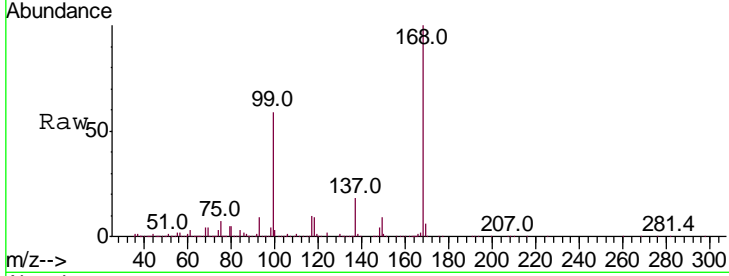




#1
 Pentafluorobenzene
 Concen: 50.000 ug/l
 RT: 5.63 min Scan# 746
 Delta R.T. 0.01 min
 Lab File: VX018084.D
 Acq: 26 Aug 2020 17:51

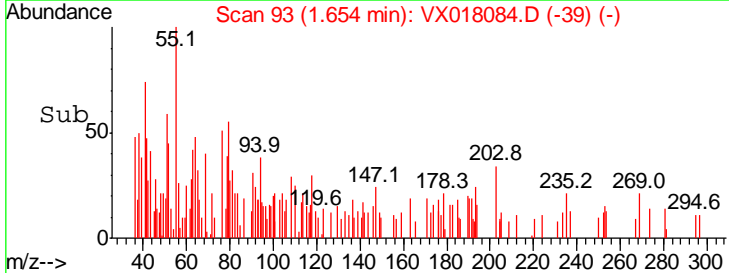
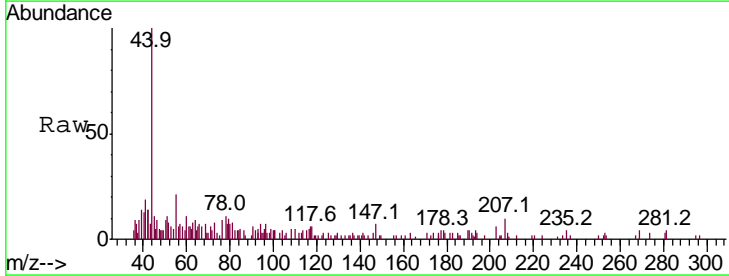
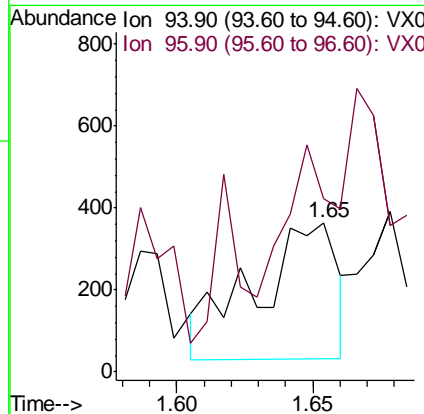
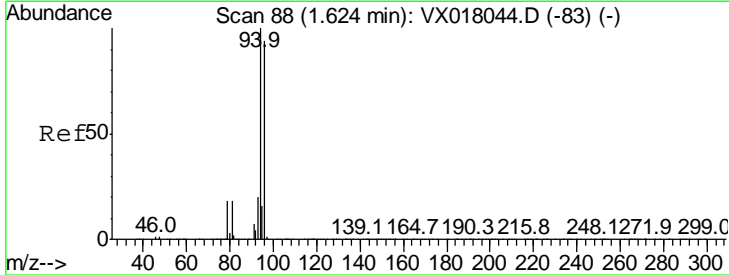
Instrument :
 MSVOA_X
 ClientSampled :
 RO-24

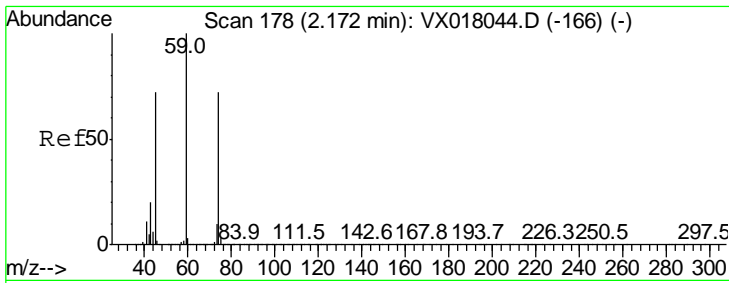
Tgt Ion	Resp	Lower	Upper
168	100		
99	58.4	46.3	69.5



#5
 Bromomethane
 Concen: 0.249 ug/l
 RT: 1.65 min Scan# 93
 Delta R.T. 0.03 min
 Lab File: VX018084.D
 Acq: 26 Aug 2020 17:51

Tgt Ion	Resp	Lower	Upper
94	100		
96	158.3	74.8	112.2#

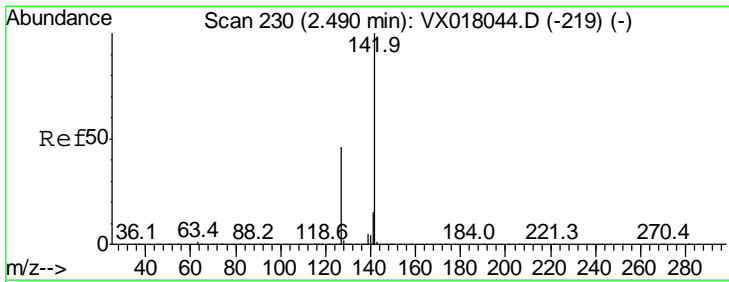
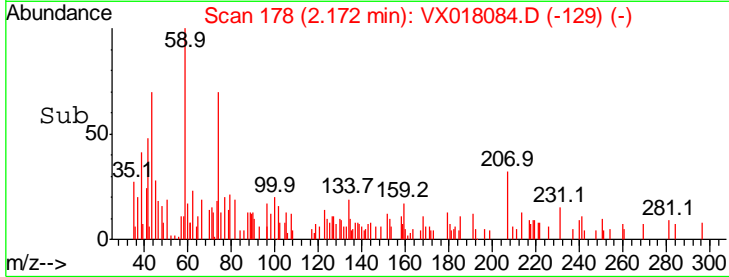
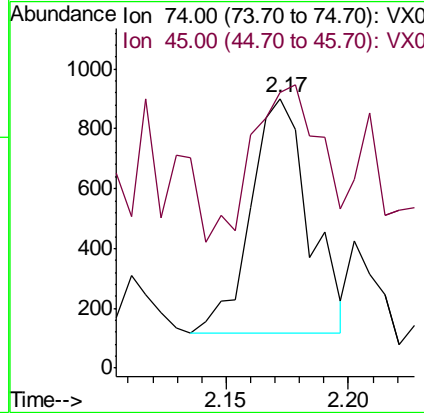
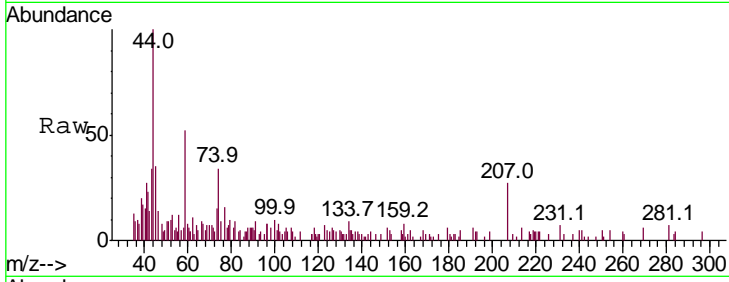




#8
 Diethyl Ether
 Concen: 0.482 ug/l
 RT: 2.17 min Scan# 178
 Delta R.T. -0.00 min
 Lab File: VX018084.D
 Acq: 26 Aug 2020 17:51

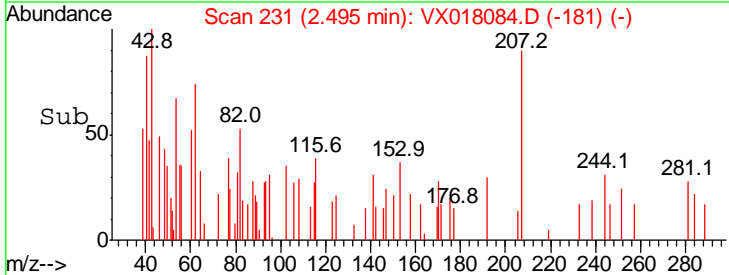
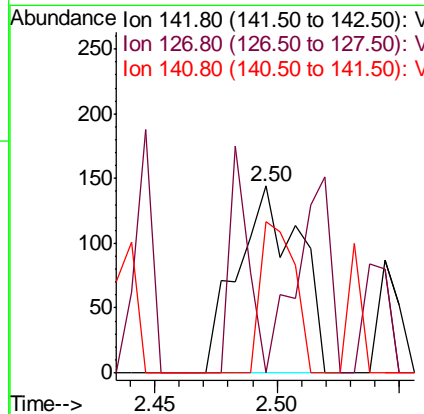
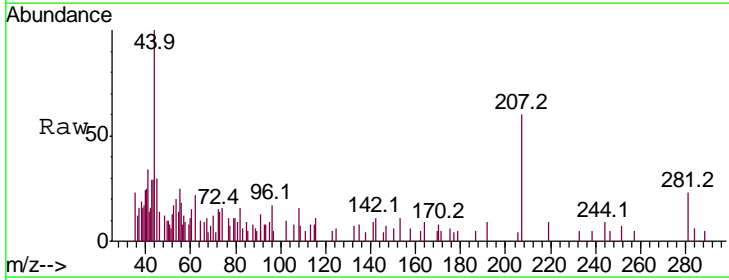
Instrument :
 MSVOA_X
 ClientSampled :
 RO-24

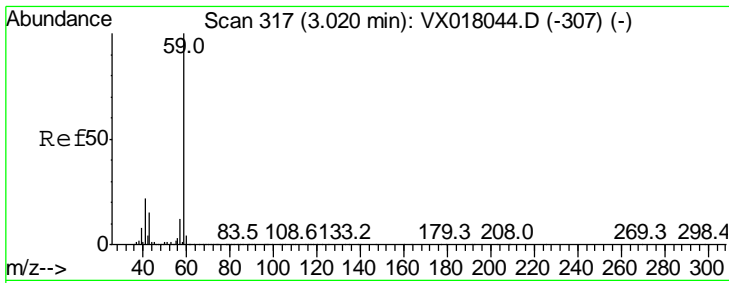
Tgt Ion: 74 Resp: 1293
 Ion Ratio Lower Upper
 74 100
 45 66.7 50.7 152.3



#10
 Methyl Iodide
 Concen: 5.336 ug/l
 RT: 2.50 min Scan# 231
 Delta R.T. 0.01 min
 Lab File: VX018084.D
 Acq: 26 Aug 2020 17:51

Tgt Ion: 142 Resp: 252
 Ion Ratio Lower Upper
 142 100
 127 36.5 37.0 55.6#
 141 44.8 11.5 17.3#

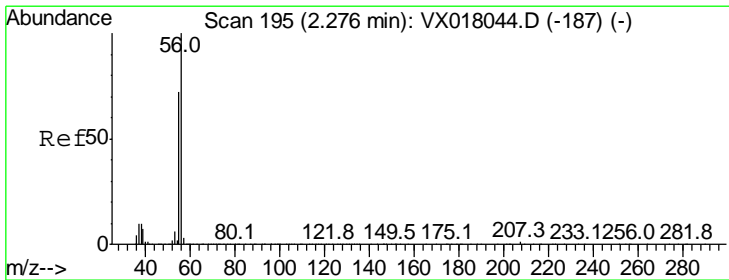
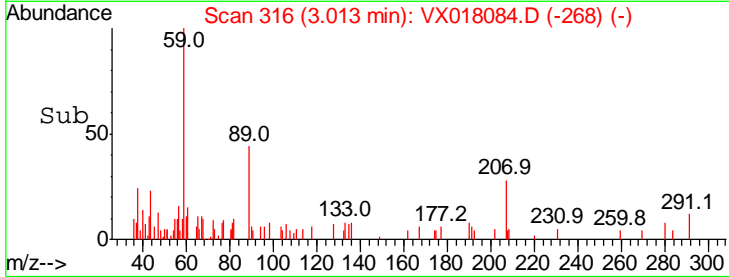
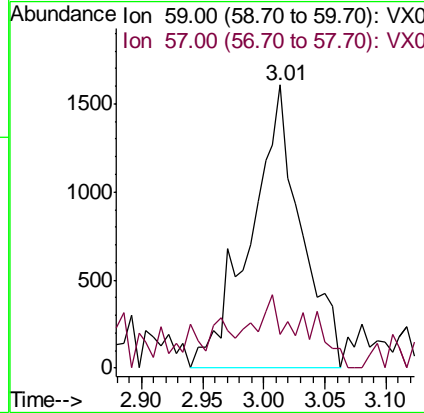
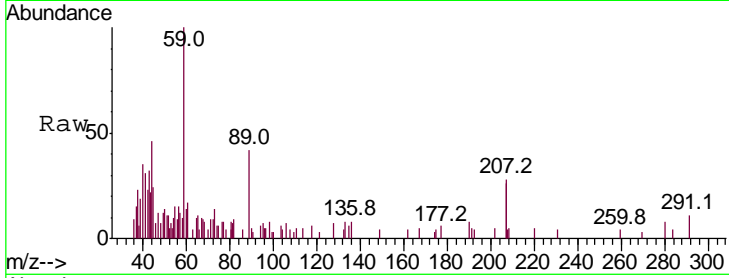




#11
 Tert butyl alcohol
 Concen: 3.767 ug/l
 RT: 3.01 min Scan# 316
 Delta R.T. -0.01 min
 Lab File: VX018084.D
 Acq: 26 Aug 2020 17:51

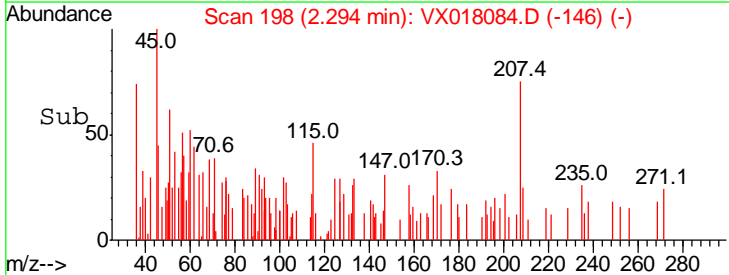
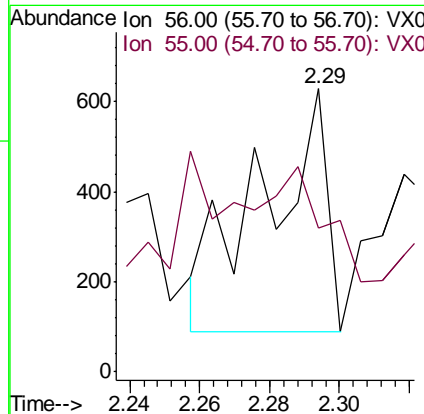
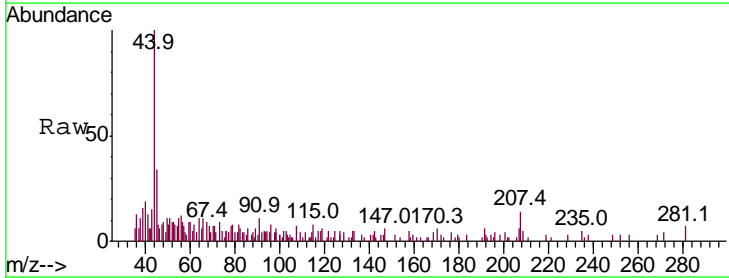
Instrument :
 MSVOA_X
 ClientSampled :
 RO-24

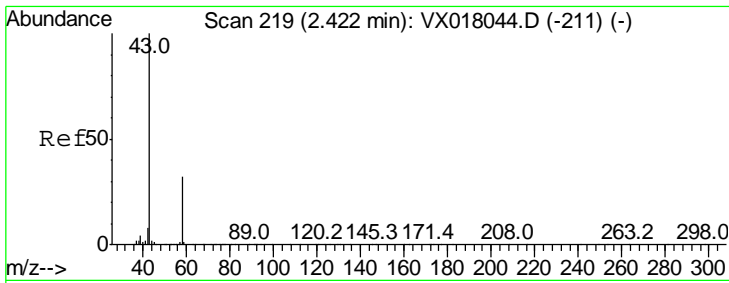
Tgt Ion: 59 Resp: 4614
 Ion Ratio Lower Upper
 59 100
 57 6.1 8.9 13.3#



#13
 Acrolein
 Concen: 1.355 ug/l
 RT: 2.29 min Scan# 198
 Delta R.T. 0.02 min
 Lab File: VX018084.D
 Acq: 26 Aug 2020 17:51

Tgt Ion: 56 Resp: 688
 Ion Ratio Lower Upper
 56 100
 55 0.0 57.0 85.6#

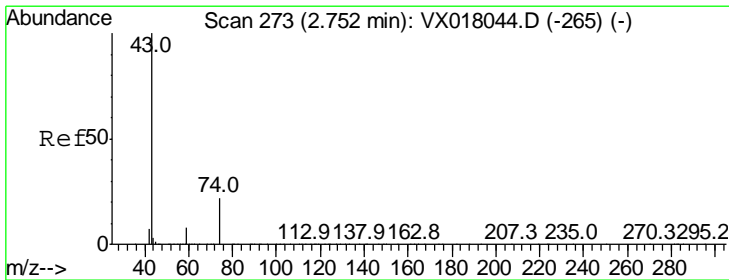
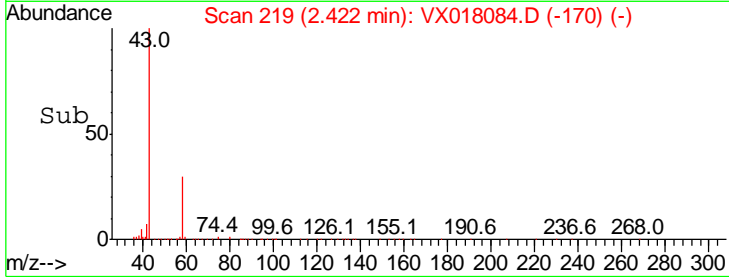
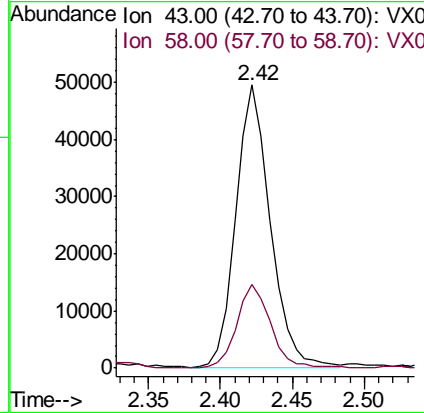
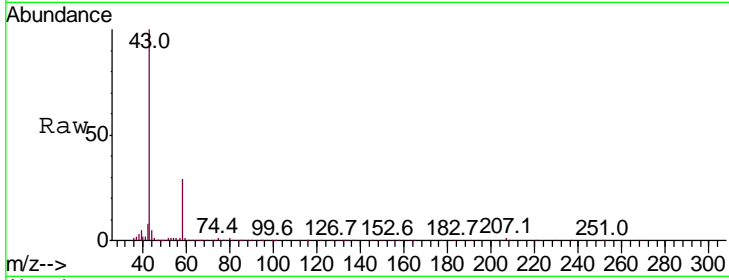




#16
 Acetone
 Concen: 33.804 ug/l
 RT: 2.42 min Scan# 219
 Delta R.T. -0.00 min
 Lab File: VX018084.D
 Acq: 26 Aug 2020 17:51

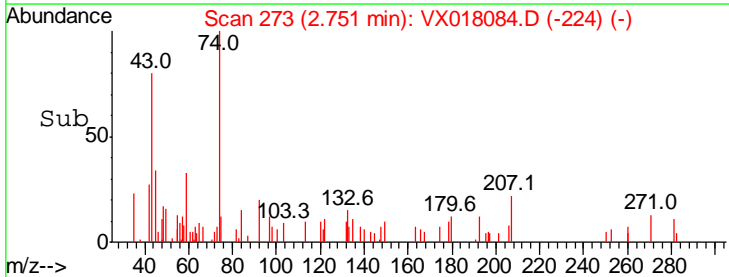
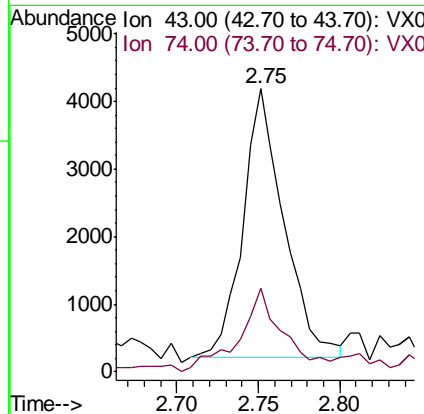
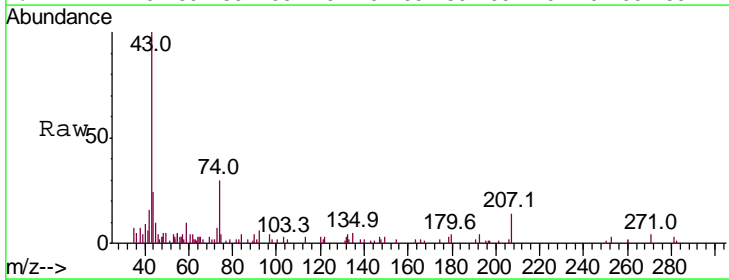
Tgt Ion	Ratio	Lower	Upper
43	100		
58	29.2	25.5	38.3

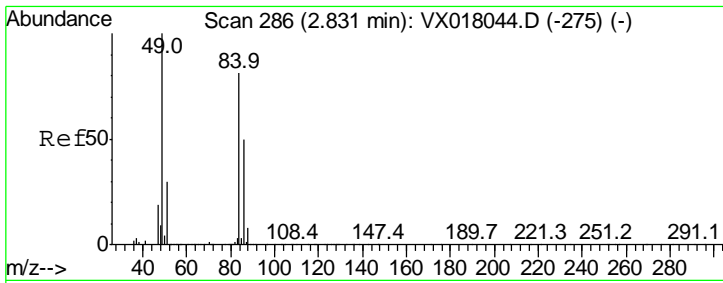
Instrument : MSVOA_X
 ClientSampled : RO-24



#18
 Methyl Acetate
 Concen: 1.174 ug/l
 RT: 2.75 min Scan# 273
 Delta R.T. -0.00 min
 Lab File: VX018084.D
 Acq: 26 Aug 2020 17:51

Tgt Ion	Ratio	Lower	Upper
43	100		
74	33.9	18.2	27.4#

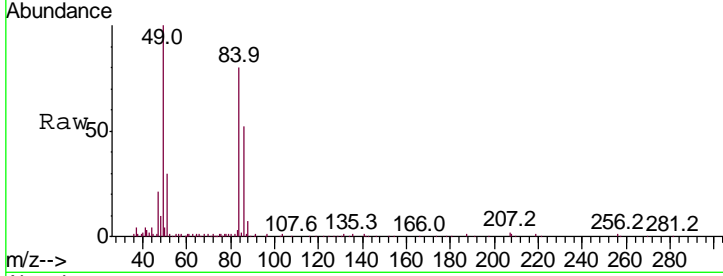




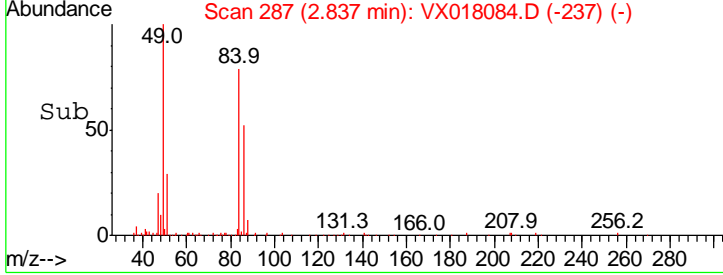
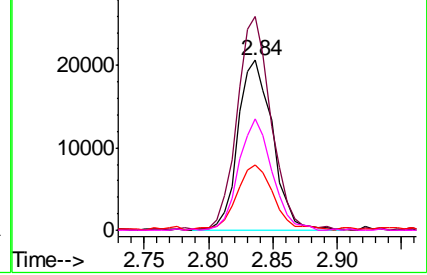
#20
 Methylene Chloride
 Concen: 6.681 ug/l
 RT: 2.84 min Scan# 287
 Delta R.T. 0.01 min
 Lab File: VX018084.D
 Acq: 26 Aug 2020 17:51

Instrument :
 MSVOA_X
 ClientSampled :
 RO-24

Tgt Ion	Resp	Lower	Upper
84	100		
49	124.7	98.6	148.0
51	37.4	29.6	44.4
86	65.6	49.8	74.6

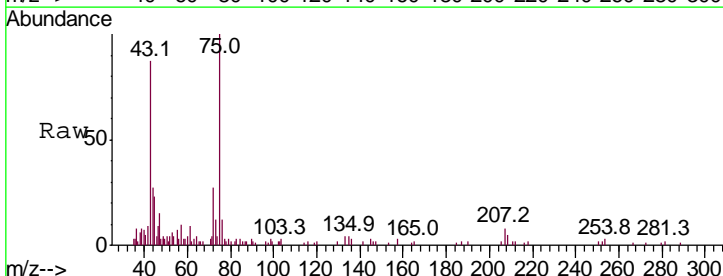


Abundance Ion 83.90 (83.60 to 84.60): VX0
 Ion 48.90 (48.60 to 49.60): VX0
 Ion 50.90 (50.60 to 51.60): VX0
 Ion 85.90 (85.60 to 86.60): VX0

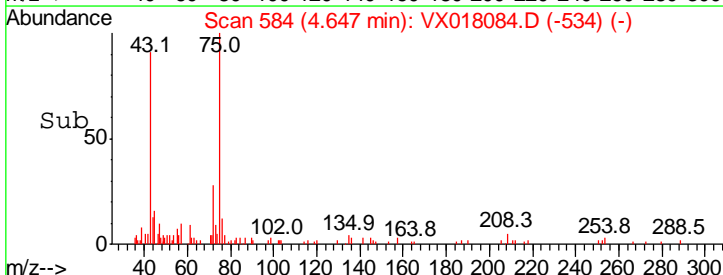
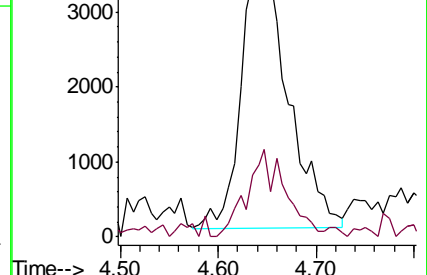


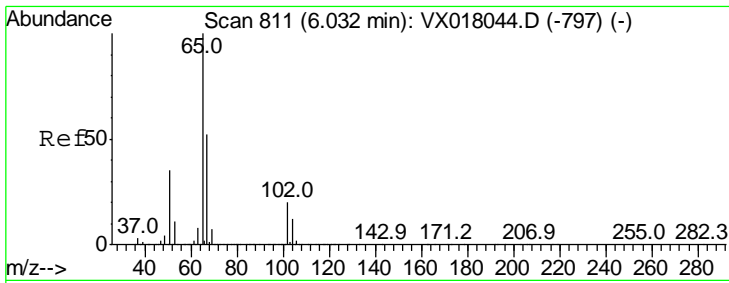
#25
 2-Butanone
 Concen: 2.970 ug/l
 RT: 4.65 min Scan# 584
 Delta R.T. 0.01 min
 Lab File: VX018084.D
 Acq: 26 Aug 2020 17:51

Tgt Ion	Resp	Lower	Upper
43	100		
72	30.5	19.8	29.6#



Abundance Ion 43.00 (42.70 to 43.70): VX0
 Ion 72.00 (71.70 to 72.70): VX0

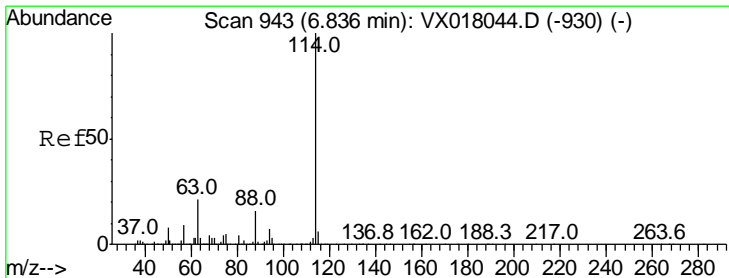
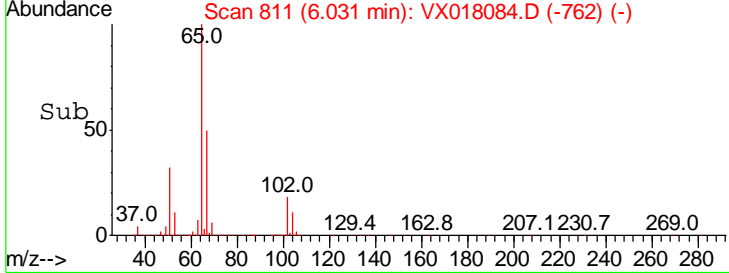
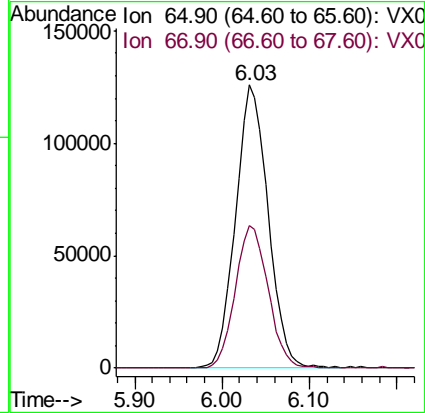
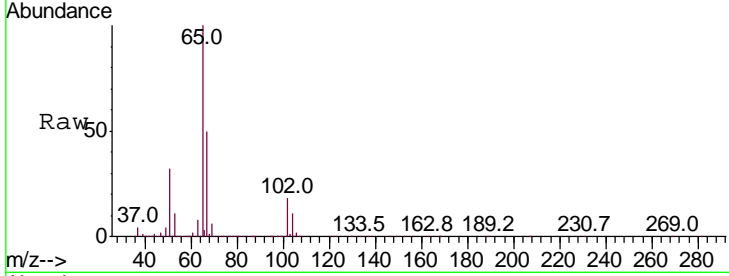




#33
 1,2-Dichloroethane-d4
 Concen: 51.669 ug/l
 RT: 6.03 min Scan# 811
 Delta R.T. -0.00 min
 Lab File: VX018084.D
 Acq: 26 Aug 2020 17:51

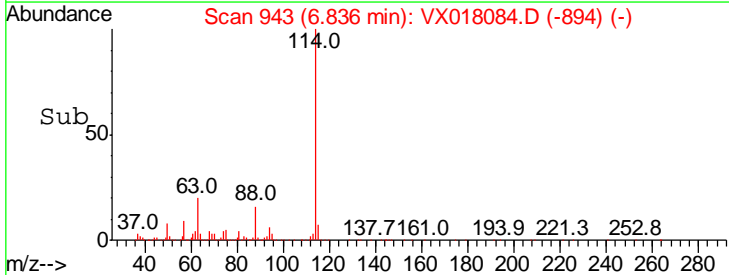
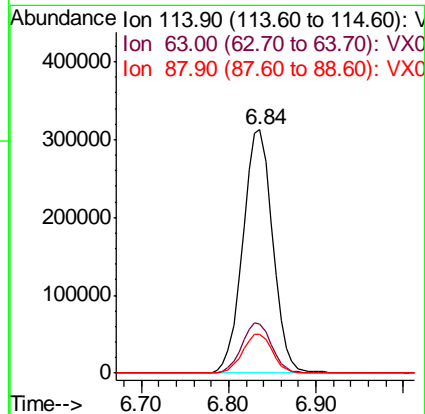
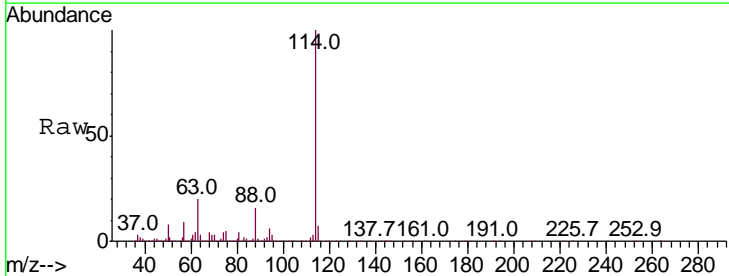
Instrument :
 MSVOA_X
 ClientSampled :
 RO-24

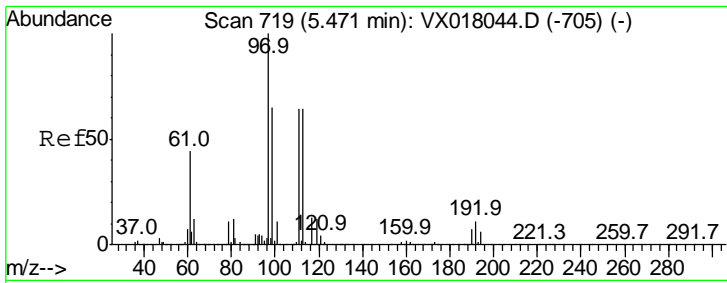
Tgt Ion	Ratio	Lower	Upper
65	100		
67	51.0	0.0	105.8



#34
 1,4-Difluorobenzene
 Concen: 50.000 ug/l
 RT: 6.84 min Scan# 943
 Delta R.T. -0.00 min
 Lab File: VX018084.D
 Acq: 26 Aug 2020 17:51

Tgt Ion	Ratio	Lower	Upper
114	100		
63	20.2	0.0	42.6
88	15.8	0.0	31.8

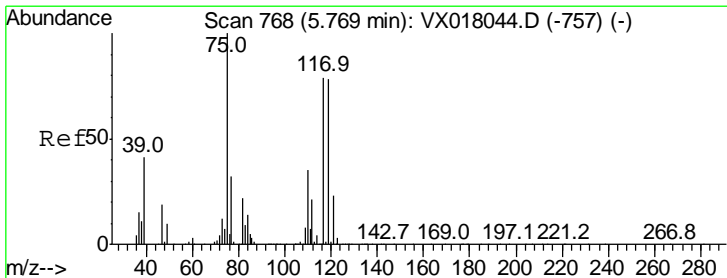
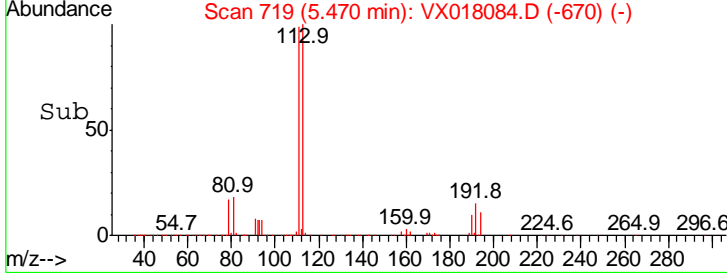
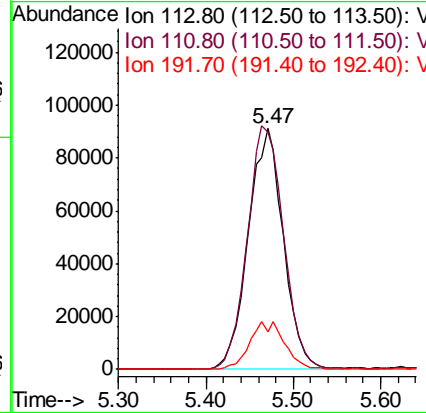
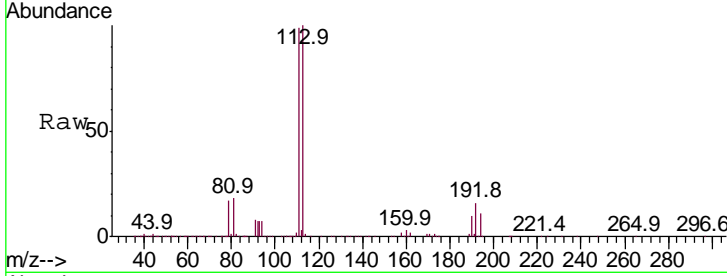




#35
 Dibromofluoromethane
 Concen: 50.291 ug/l
 RT: 5.47 min Scan# 719
 Delta R.T. -0.00 min
 Lab File: VX018084.D
 Acq: 26 Aug 2020 17:51

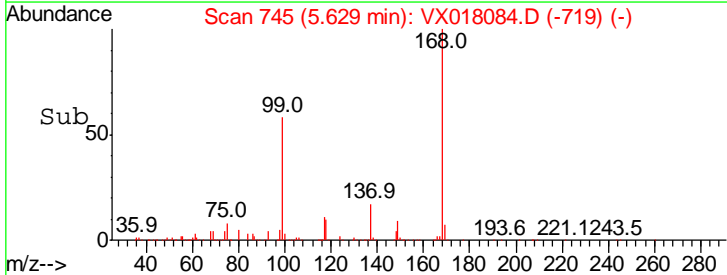
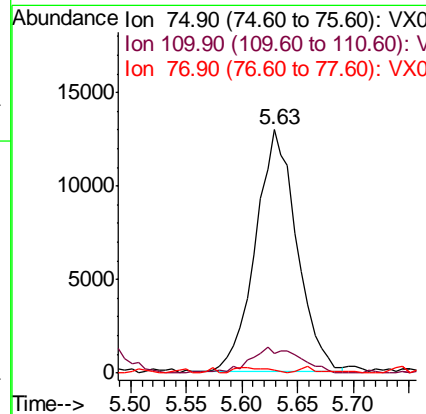
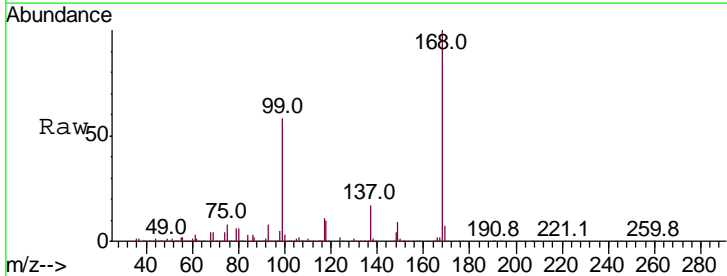
Instrument :
 MSVOA_X
 ClientSampled :
 RO-24

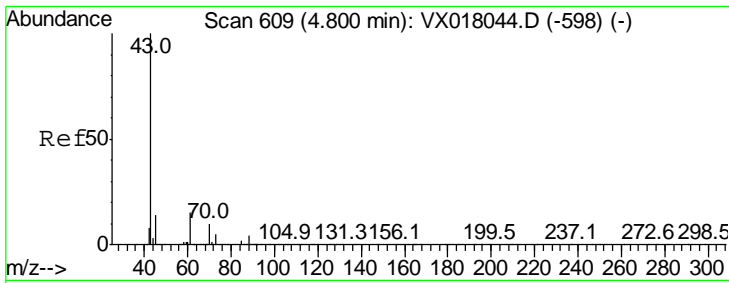
Tgt Ion	Resp	Lower	Upper
113	253887		
111	104.5	81.6	122.4
192	19.7	15.8	23.8



#36
 1,1-Dichloropropene
 Concen: 4.881 ug/l
 RT: 5.63 min Scan# 745
 Delta R.T. -0.14 min
 Lab File: VX018084.D
 Acq: 26 Aug 2020 17:51

Tgt Ion	Resp	Lower	Upper
75	33374		
110	12.8	18.0	54.0#
77	0.0	24.4	36.6#

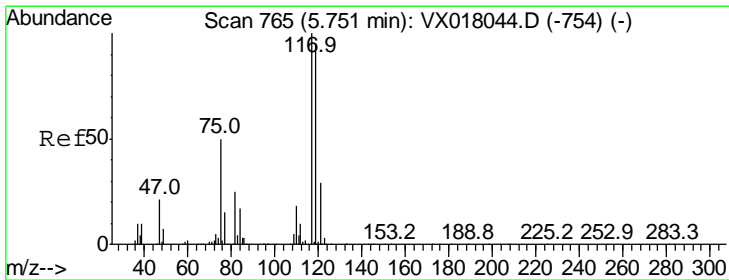
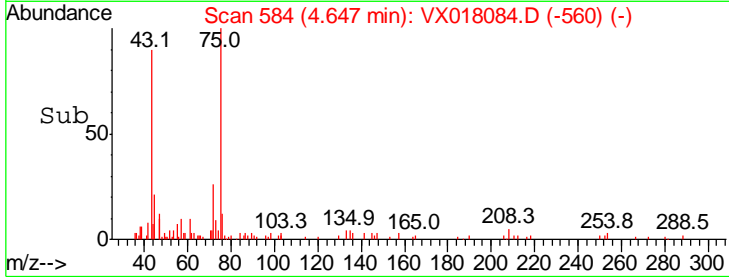
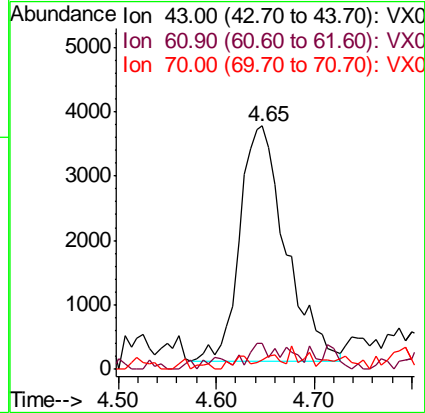
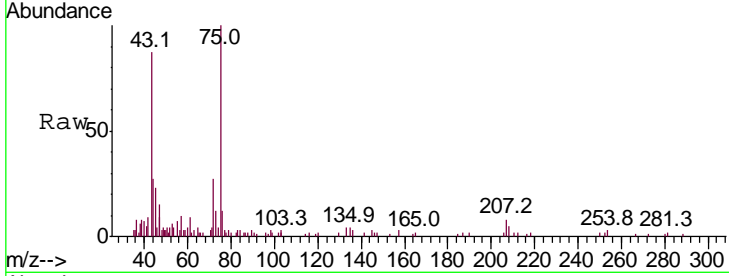




#37
 Ethyl Acetate
 Concen: 1.500 ug/l
 RT: 4.65 min Scan# 584
 Delta R.T. -0.15 min
 Lab File: VX018084.D
 Acq: 26 Aug 2020 17:51

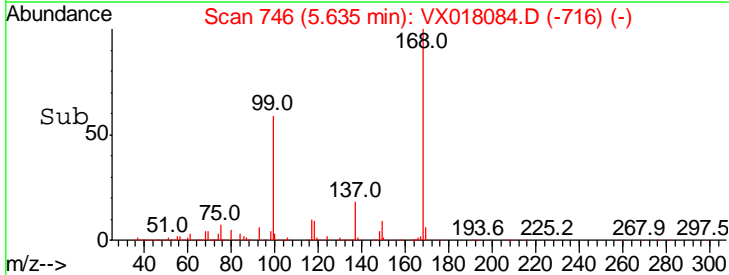
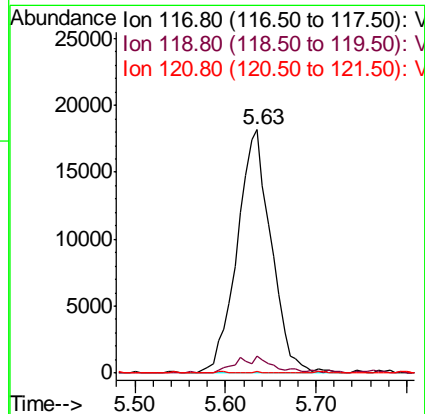
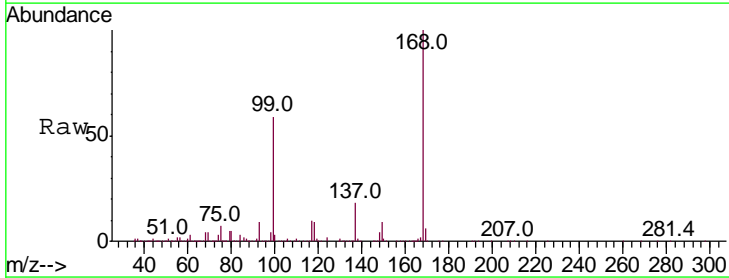
Instrument :
 MSVOA_X
 ClientSampled :
 RO-24

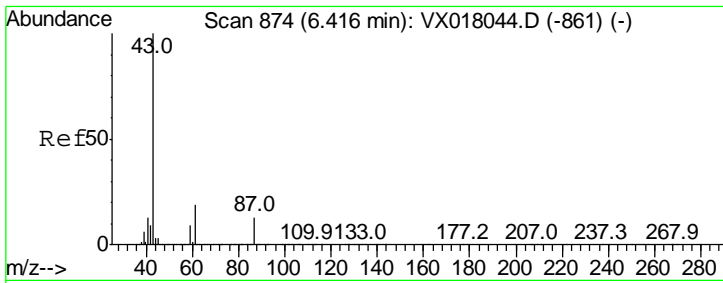
Tgt Ion	Ratio	Lower	Upper
43	100		
61	5.8	11.3	16.9#
70	2.1	8.2	12.4#



#38
 Carbon Tetrachloride
 Concen: 6.154 ug/l
 RT: 5.63 min Scan# 746
 Delta R.T. -0.12 min
 Lab File: VX018084.D
 Acq: 26 Aug 2020 17:51

Tgt Ion	Ratio	Lower	Upper
117	100		
119	6.6	75.8	113.6#
121	0.5	23.4	35.0#

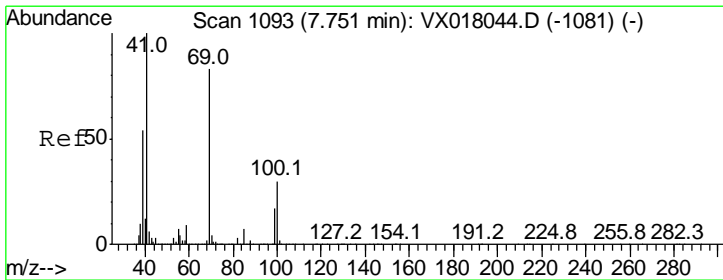
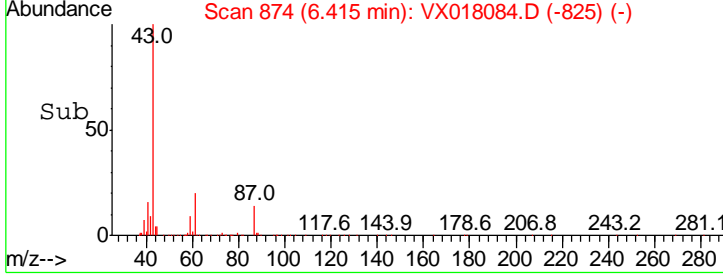
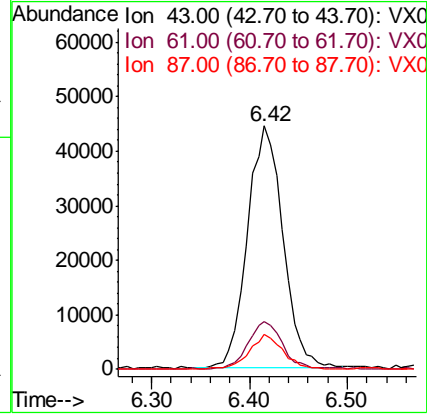
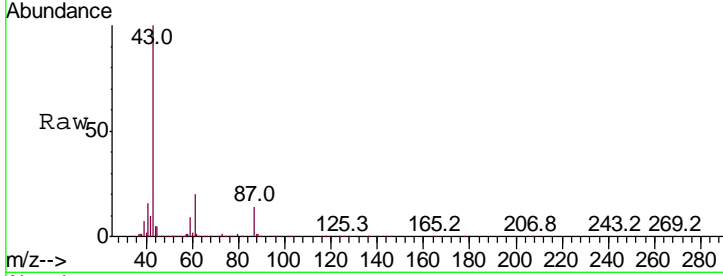




#43
 Isopropyl Acetate
 Concen: 8.697 ug/l
 RT: 6.42 min Scan# 874
 Delta R.T. -0.00 min
 Lab File: VX018084.D
 Acq: 26 Aug 2020 17:51

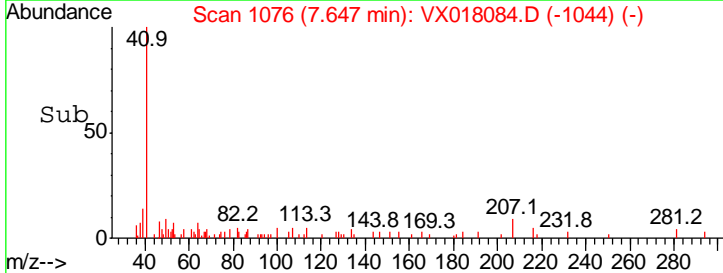
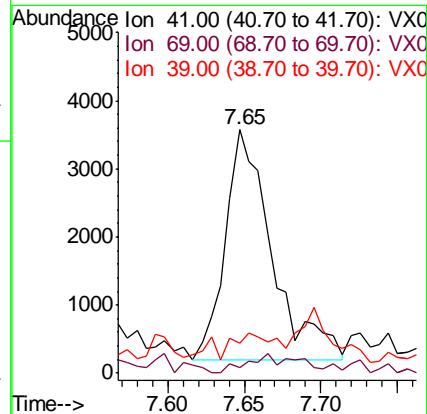
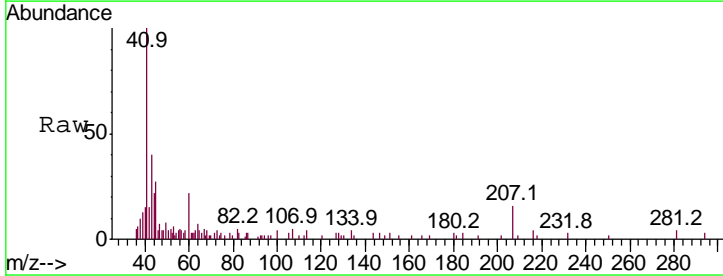
Instrument :
 MSVOA_X
 ClientSampled :
 RO-24

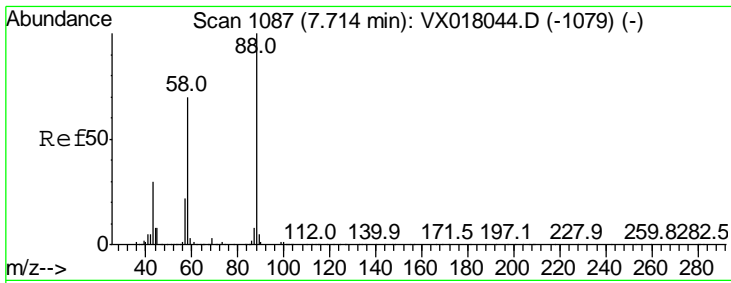
Tgt Ion	Ratio	Lower	Upper
43	100		
61	19.8	15.7	23.5
87	13.6	10.3	15.5



#48
 Methyl methacrylate
 Concen: 1.123 ug/l
 RT: 7.65 min Scan# 1076
 Delta R.T. -0.10 min
 Lab File: VX018084.D
 Acq: 26 Aug 2020 17:51

Tgt Ion	Ratio	Lower	Upper
41	100		
69	4.9	65.5	98.3#
39	0.0	44.5	66.7#

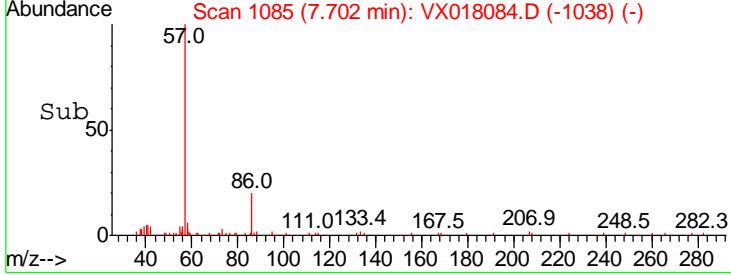
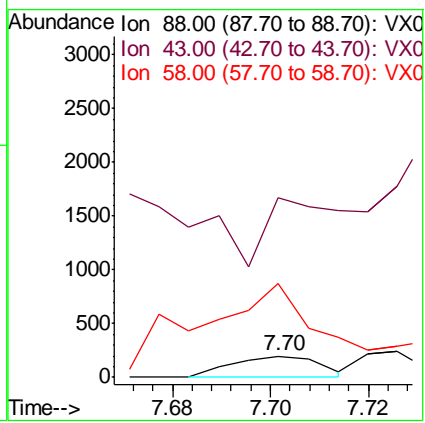
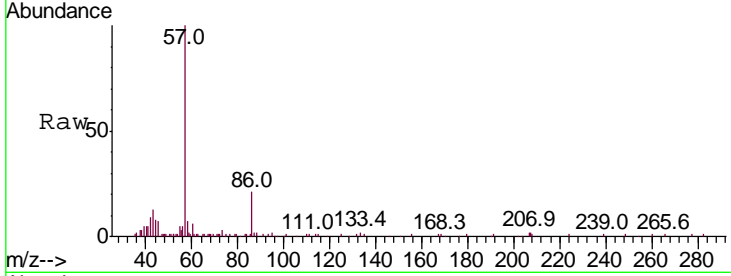




#49
 1,4-Dioxane
 Concen: 2.127 ug/l
 RT: 7.70 min Scan# 1085
 Delta R.T. -0.01 min
 Lab File: VX018084.D
 Acq: 26 Aug 2020 17:51

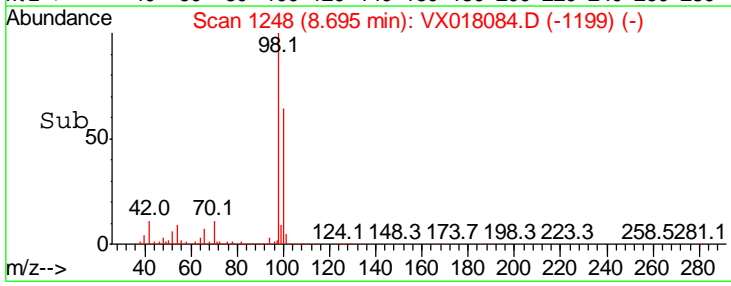
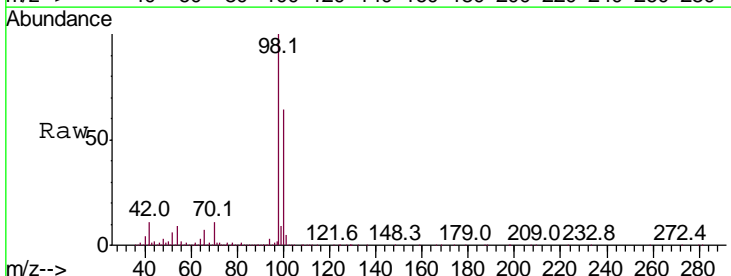
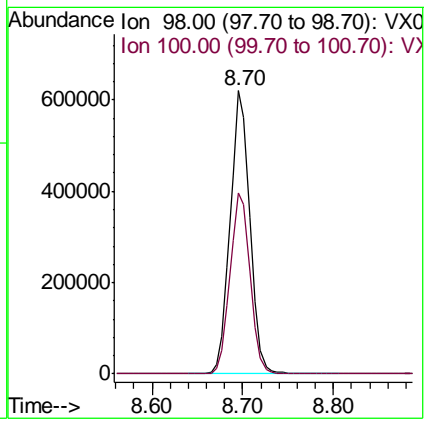
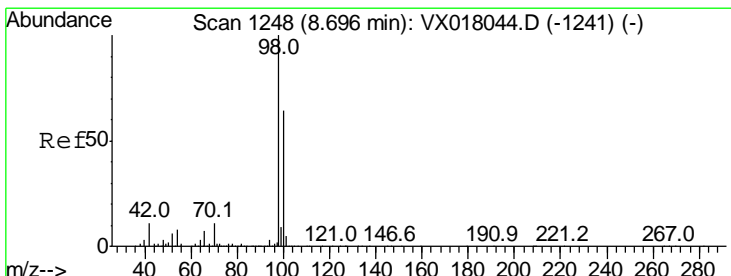
Instrument : MSVOA_X
 ClientSampled : RO-24

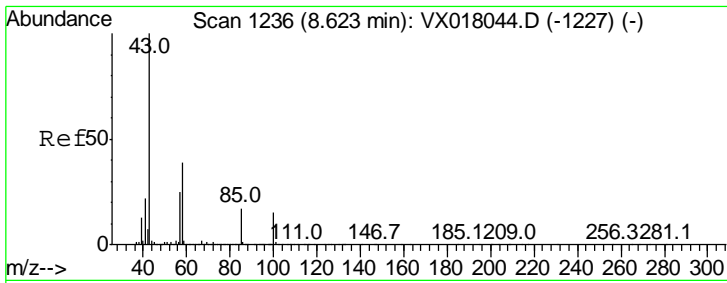
Tgt Ion	Resp	Lower	Upper
88	100		
43	0.0	27.4	41.0#
58	626.4	56.4	84.6#



#50
 Toluene-d8
 Concen: 49.535 ug/l
 RT: 8.70 min Scan# 1248
 Delta R.T. -0.00 min
 Lab File: VX018084.D
 Acq: 26 Aug 2020 17:51

Tgt Ion	Resp	Lower	Upper
98	100		
100	65.0	52.2	78.4

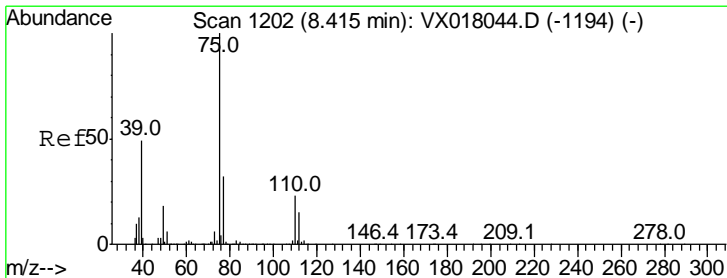
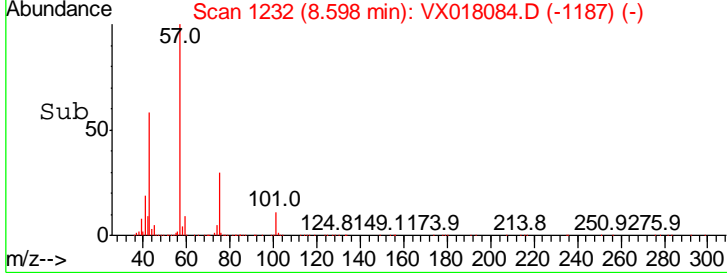
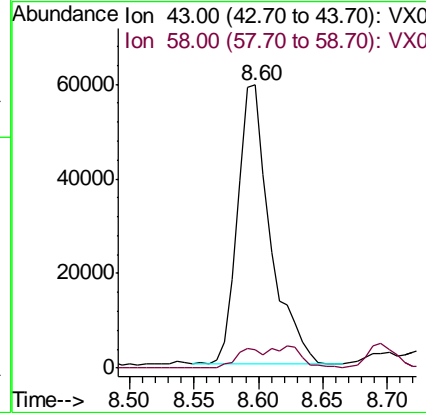
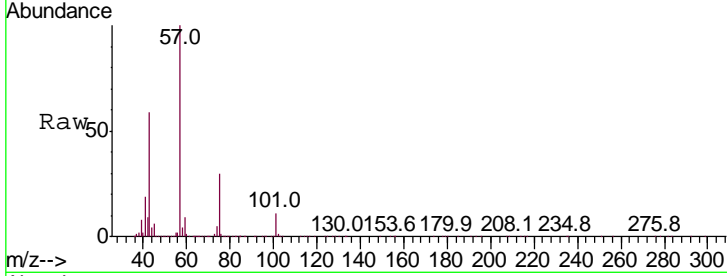




#51
 4-Methyl-2-Pentanone
 Concen: 13.179 ug/l
 RT: 8.60 min Scan# 1232
 Delta R.T. -0.02 min
 Lab File: VX018084.D
 Acq: 26 Aug 2020 17:51

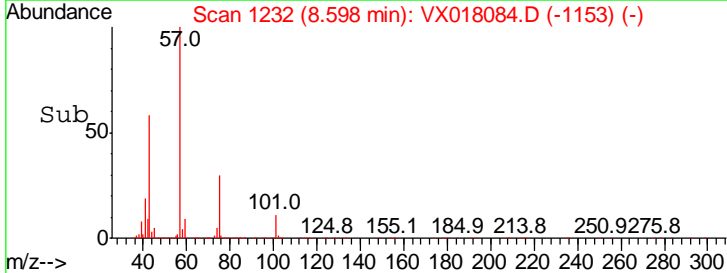
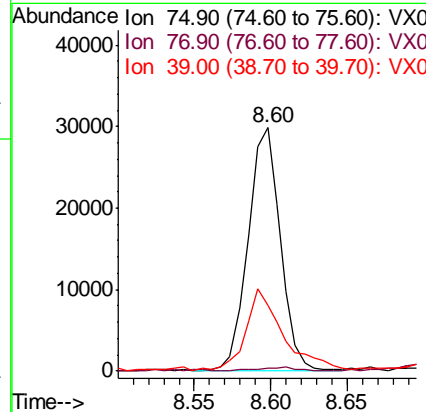
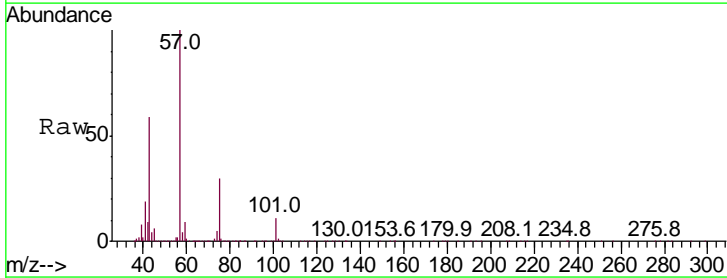
Instrument : MSVOA_X
 ClientSampled : RO-24

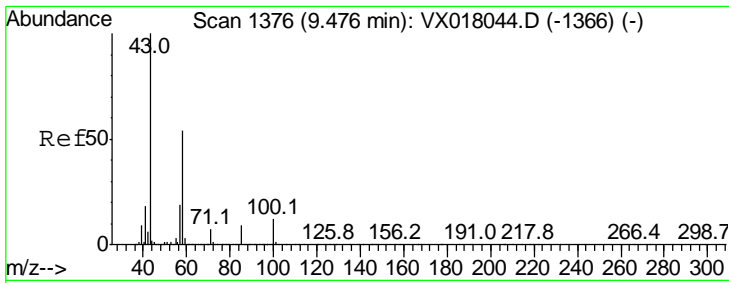
Tgt Ion	Resp	Lower	Upper
43	104412		
58	5.9	30.7	46.1#



#54
 cis-1,3-Dichloropropene
 Concen: 4.929 ug/l
 RT: 8.60 min Scan# 1232
 Delta R.T. 0.18 min
 Lab File: VX018084.D
 Acq: 26 Aug 2020 17:51

Tgt Ion	Resp	Lower	Upper
75	44000		
77	1.0	25.8	38.8#
39	26.9	38.8	58.2#

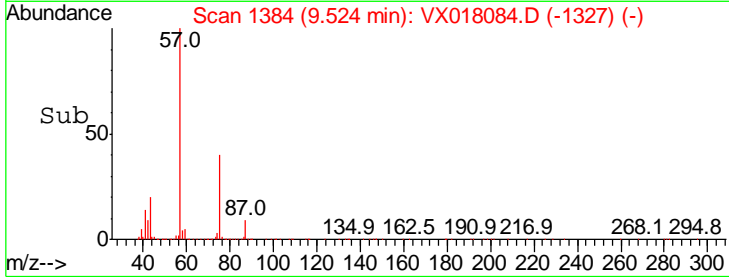
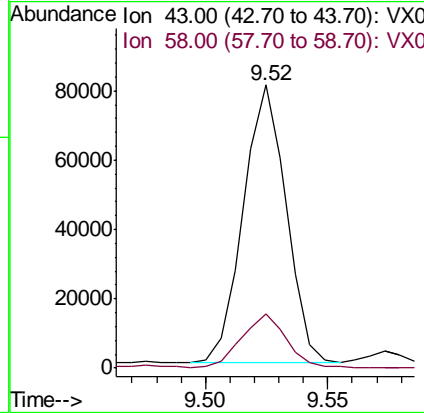
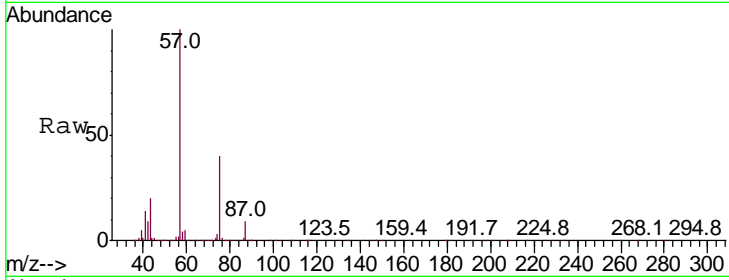




#59
 2-Hexanone
 Concen: 16.223 ug/l
 RT: 9.52 min Scan# 1384
 Delta R.T. 0.05 min
 Lab File: VX018084.D
 Acq: 26 Aug 2020 17:51

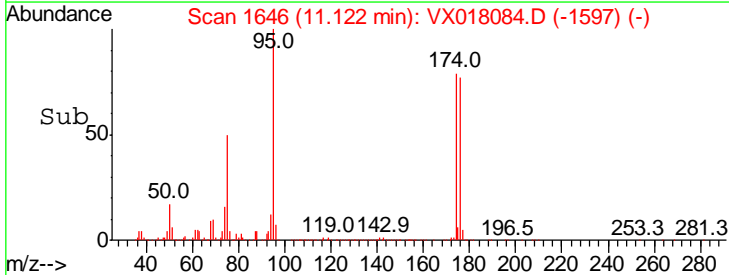
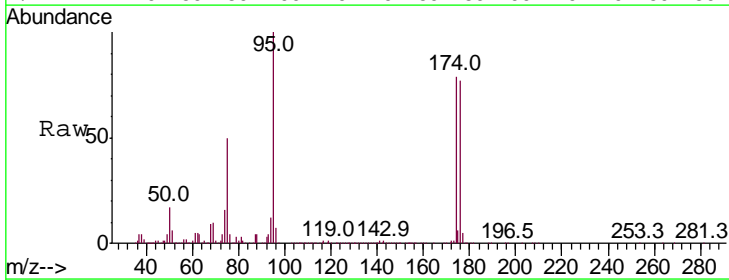
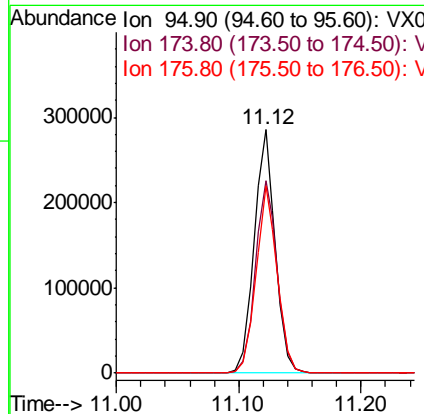
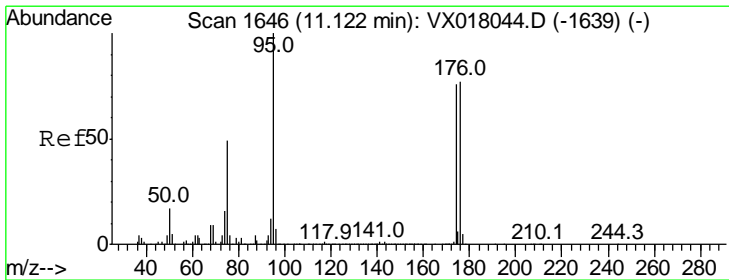
Instrument :
 MSVOA_X
 ClientSampled :
 RO-24

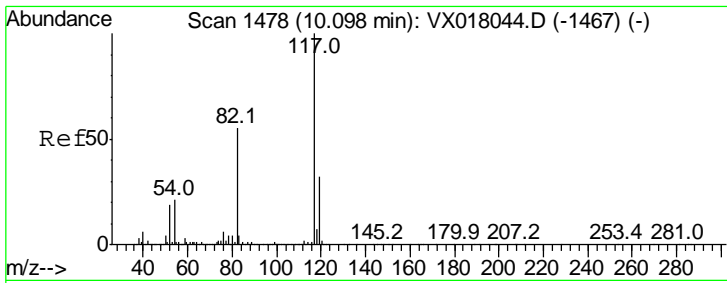
Tgt Ion: 43 Resp: 97733
 Ion Ratio Lower Upper
 43 100
 58 21.0 26.6 79.7#



#62
 4-Bromofluorobenzene
 Concen: 46.183 ug/l
 RT: 11.12 min Scan# 1646
 Delta R.T. -0.00 min
 Lab File: VX018084.D
 Acq: 26 Aug 2020 17:51

Tgt Ion: 95 Resp: 341652
 Ion Ratio Lower Upper
 95 100
 174 82.2 0.0 160.2
 176 77.8 0.0 155.8

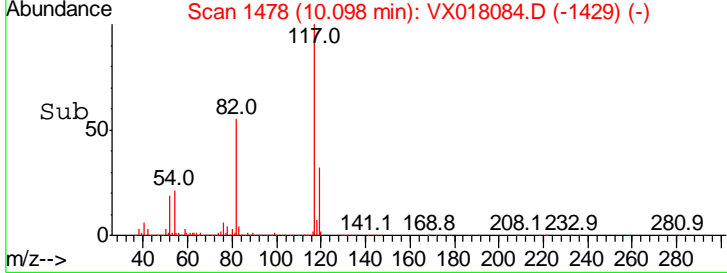
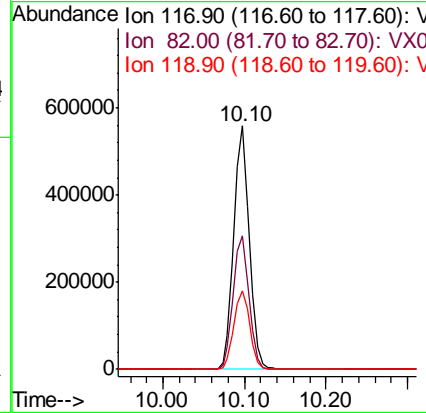
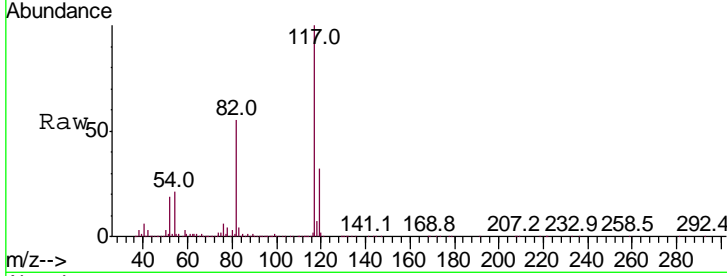




#63
 Chlorobenzene-d5
 Concen: 50.000 ug/l
 RT: 10.10 min Scan# 1478
 Delta R.T. -0.00 min
 Lab File: VX018084.D
 Acq: 26 Aug 2020 17:51

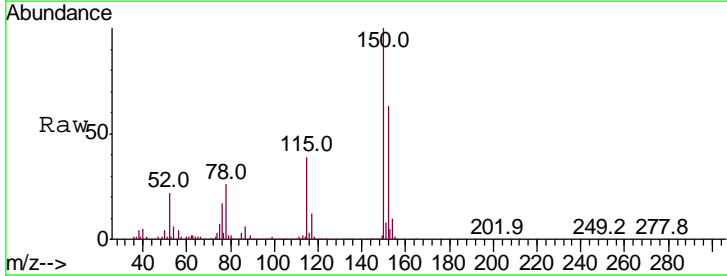
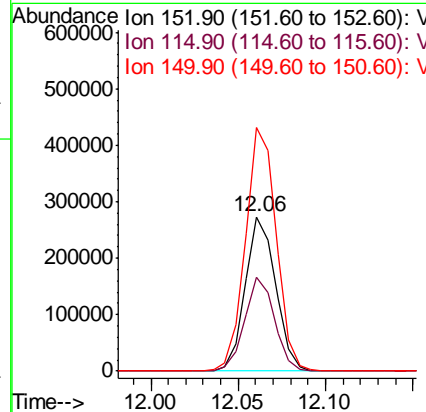
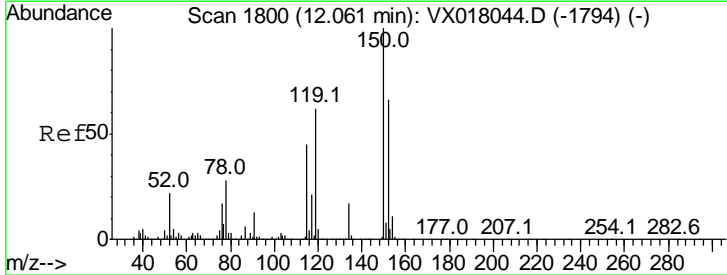
Instrument :
 MSVOA_X
 ClientSampled :
 RO-24

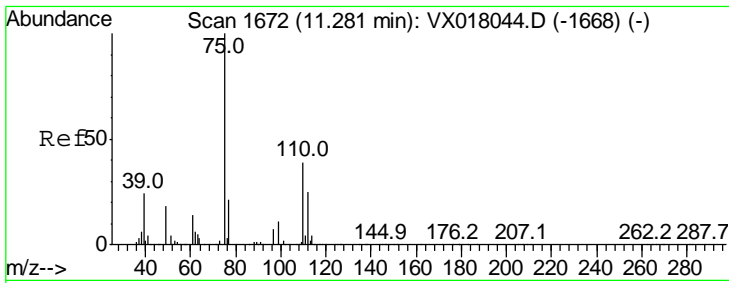
Tgt Ion	Resp	Lower	Upper
117	725166		
82	54.9	44.2	66.2
119	32.5	25.7	38.5



#72
 1,4-Dichlorobenzene-d4
 Concen: 50.000 ug/l
 RT: 12.06 min Scan# 1800
 Delta R.T. -0.00 min
 Lab File: VX018084.D
 Acq: 26 Aug 2020 17:51

Tgt Ion	Resp	Lower	Upper
152	330208		
115	59.9	41.5	124.5
150	159.6	0.0	343.8

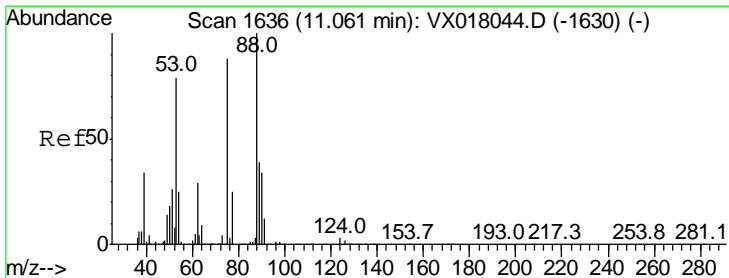
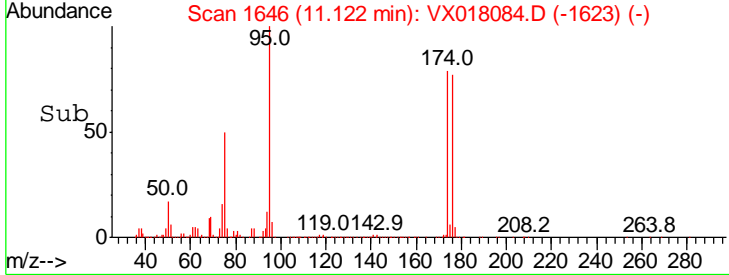
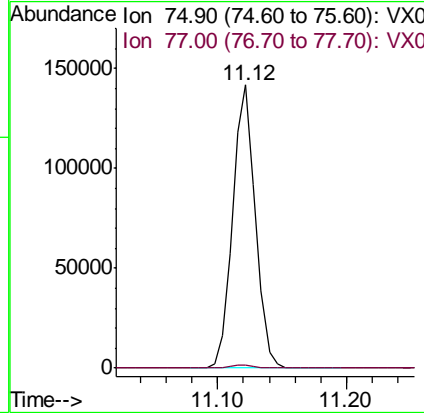
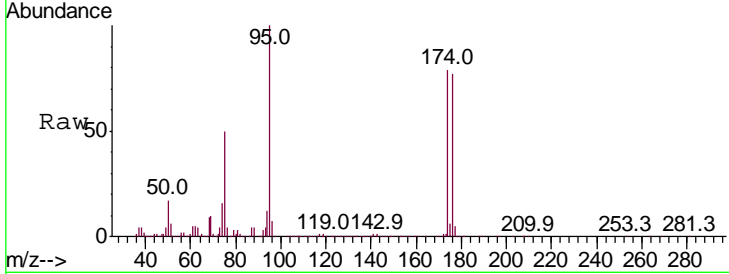




#76
 1,2,3-Trichloropropane
 Concen: 23.847 ug/l
 RT: 11.12 min Scan# 1646
 Delta R.T. -0.16 min
 Lab File: VX018084.D
 Acq: 26 Aug 2020 17:51

Instrument :
 MSVOA_X
 ClientSampled :
 RO-24

Tgt Ion: 75 Resp: 175170
 Ion Ratio Lower Upper
 75 100
 77 1.5 20.8 62.2#



#81
 trans-1,4-Dichloro-2-butene
 Concen: 64.407 ug/l
 RT: 11.12 min Scan# 1646
 Delta R.T. 0.06 min
 Lab File: VX018084.D
 Acq: 26 Aug 2020 17:51

Tgt Ion: 75 Resp: 175170
 Ion Ratio Lower Upper
 75 100
 53 0.4 74.7 112.1#
 89 0.0 36.6 54.8#

