

Data Path : Z:\VOASRV\HPCHEM1\MSVOA X\DATA\VX082720\
 Data File : VX018090.D
 Acq On : 27 Aug 2020 14:43
 Operator : JC/SP
 Sample : VX0827WBL01
 Misc : 5.0mL/MSVOA X/WATER
 ALS Vial : 4 Sample Multiplier: 1

Instrument :
 MSVOA_X
 ClientSampleId :
 VX0827WBL01

Quant Time: Aug 28 03:16:34 2020
 Quant Method : Z:\VOASRV\HPCHEM1\MSVOA_X\METHOD\82X082120W.M
 Quant Title : SW846 8260
 QLast Update : Fri Aug 21 03:03:56 2020
 Response via : Initial Calibration

| Internal Standards | R.T. | QIon | Response | Conc | Units | Dev(Min) |
|----------------------------|-------|------|----------|-------|-------|----------|
| 1) Pentafluorobenzene | 5.63 | 168 | 453031 | 50.00 | ug/l | 0.00 |
| 34) 1,4-Difluorobenzene | 6.84 | 114 | 730004 | 50.00 | ug/l | 0.00 |
| 63) Chlorobenzene-d5 | 10.10 | 117 | 692351 | 50.00 | ug/l | 0.00 |
| 72) 1,4-Dichlorobenzene-d4 | 12.06 | 152 | 326983 | 50.00 | ug/l | 0.00 |

System Monitoring Compounds

| | | | | | | |
|---------------------------|-------|-----|----------|--------|---------|------|
| 33) 1,2-Dichloroethane-d4 | 6.03 | 65 | 347547 | 55.26 | ug/l | 0.00 |
| Spiked Amount | | | | 50.000 | | |
| | | | Recovery | = | 110.52% | |
| 35) Dibromofluoromethane | 5.46 | 113 | 275896 | 55.49 | ug/l | 0.00 |
| Spiked Amount | | | | 50.000 | | |
| | | | Recovery | = | 110.98% | |
| 50) Toluene-d8 | 8.70 | 98 | 950250 | 51.32 | ug/l | 0.00 |
| Spiked Amount | | | | 50.000 | | |
| | | | Recovery | = | 102.64% | |
| 62) 4-Bromofluorobenzene | 11.12 | 95 | 347544 | 47.70 | ug/l | 0.00 |
| Spiked Amount | | | | 50.000 | | |
| | | | Recovery | = | 95.40% | |

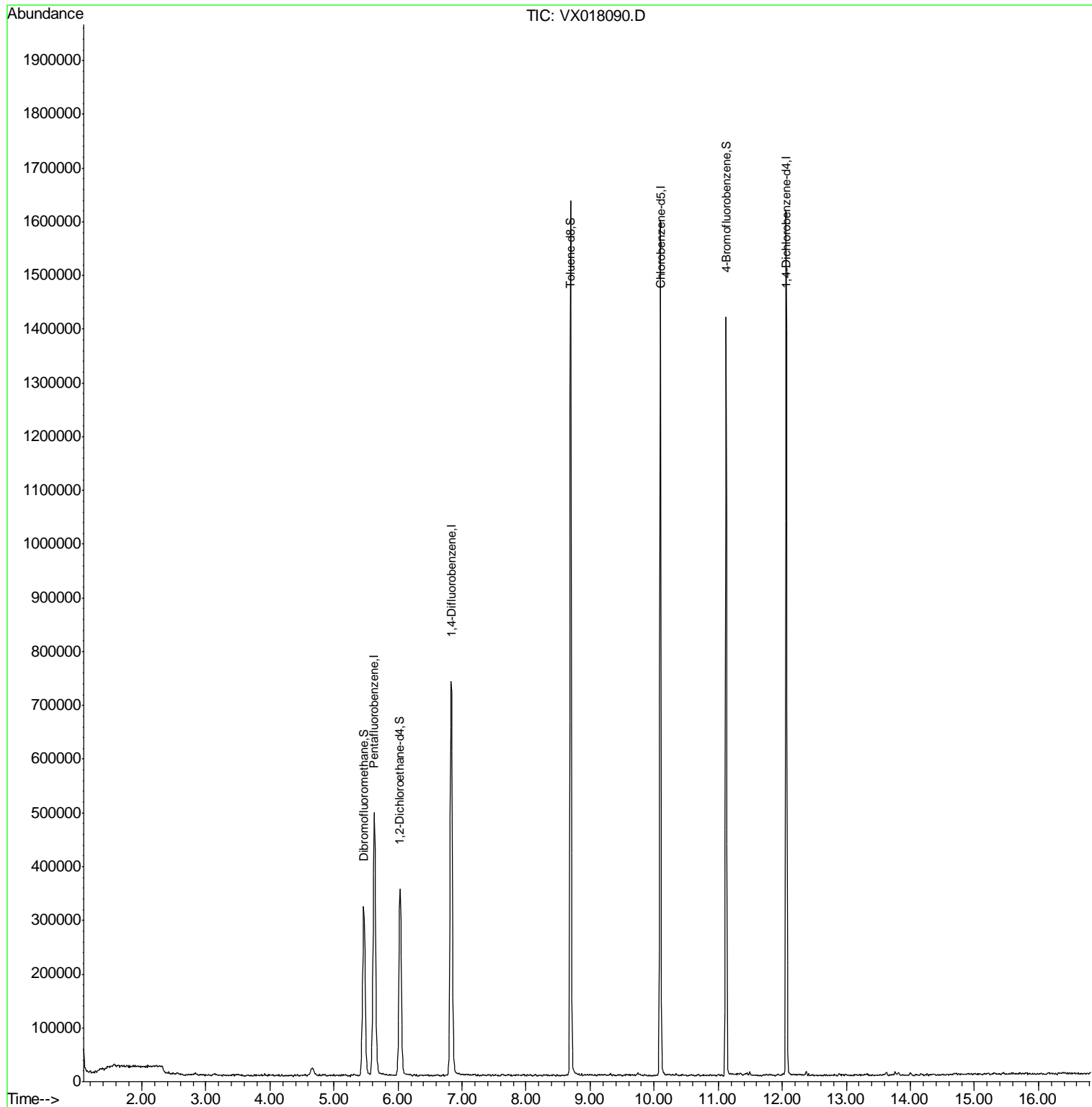
Target Compounds Qvalue

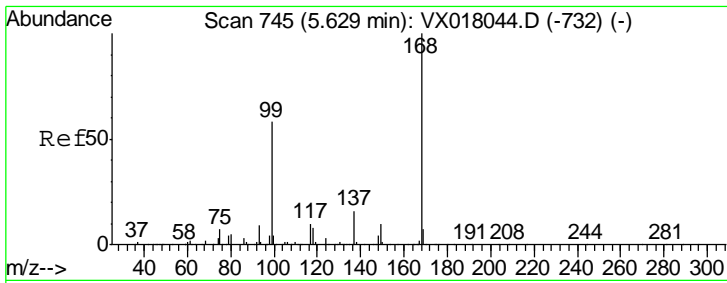
(#) = qualifier out of range (m) = manual integration (+) = signals summed

Data Path : Z:\VOASRV\HPCHEM1\MSVOA X\DATA\VX082720\
 Data File : VX018090.D
 Acq On : 27 Aug 2020 14:43
 Operator : JC/SP
 Sample : VX0827WBL01
 Misc : 5.0mL/MSVOA X/WATER
 ALS Vial : 4 Sample Multiplier: 1

Instrument :
 MSVOA_X
 ClientSampled :
 VX0827WBL01

Quant Time: Aug 28 03:16:34 2020
 Quant Method : Z:\VOASRV\HPCHEM1\MSVOA_X\METHOD\82X082120W.M
 Quant Title : SW846 8260
 QLast Update : Fri Aug 21 03:03:56 2020
 Response via : Initial Calibration

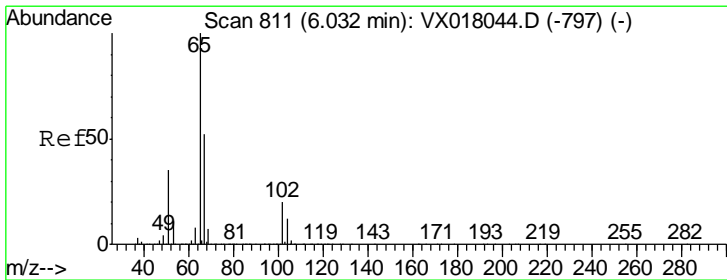
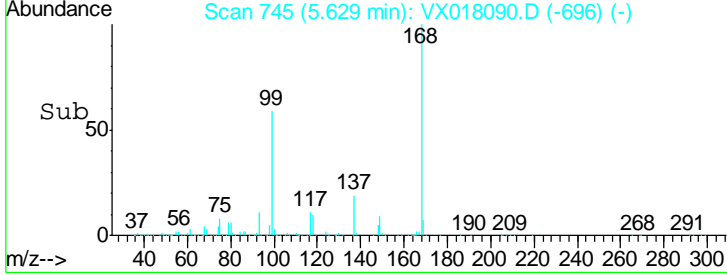
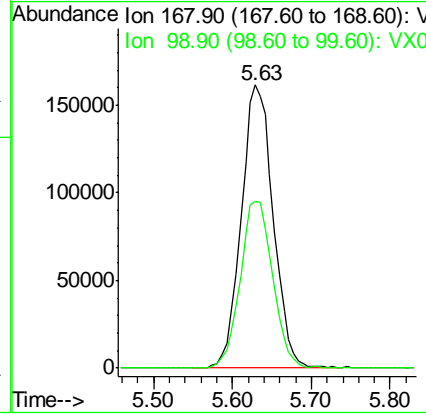
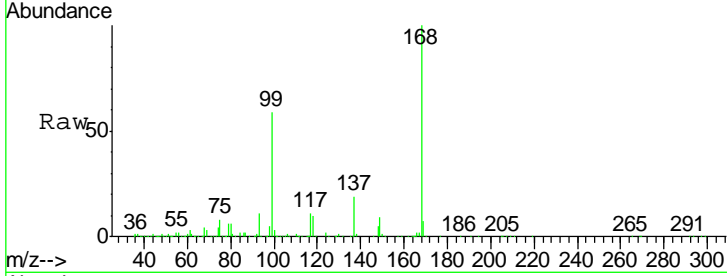




#1
 Pentafluorobenzene
 Concen: 50.000 ug/l
 RT: 5.63 min Scan# 745
 Delta R.T. -0.00 min
 Lab File: VX018090.D
 Acq: 27 Aug 2020 14:43

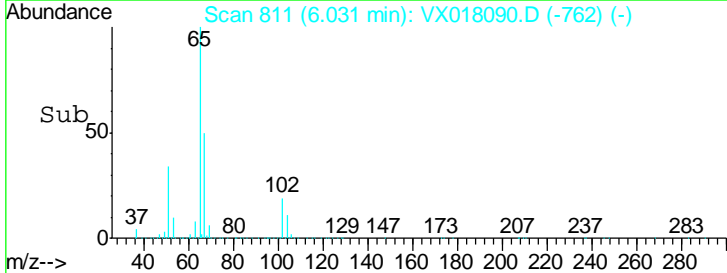
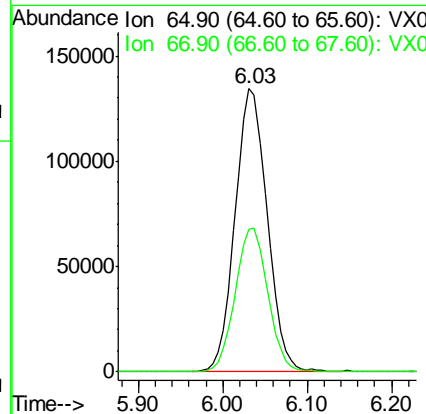
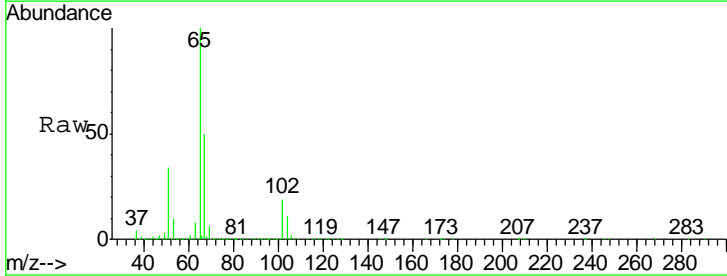
Instrument : MSVOA_X
 ClientSampled : VX0827WBL01

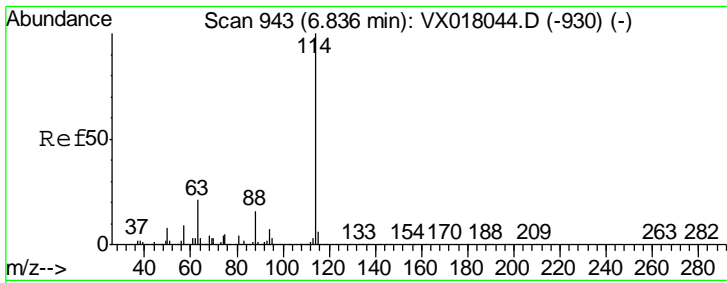
| Tgt Ion | Resp | Lower | Upper |
|---------|--------|-------|-------|
| 168 | 453031 | | |
| 99 | 59.1 | 46.3 | 69.5 |



#33
 1,2-Dichloroethane-d4
 Concen: 55.261 ug/l
 RT: 6.03 min Scan# 811
 Delta R.T. -0.00 min
 Lab File: VX018090.D
 Acq: 27 Aug 2020 14:43

| Tgt Ion | Resp | Lower | Upper |
|---------|--------|-------|-------|
| 65 | 347547 | | |
| 67 | 51.6 | 0.0 | 105.8 |

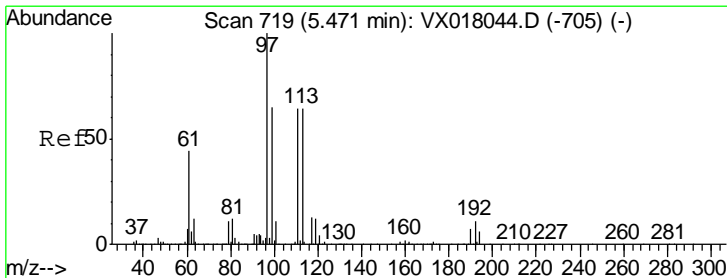
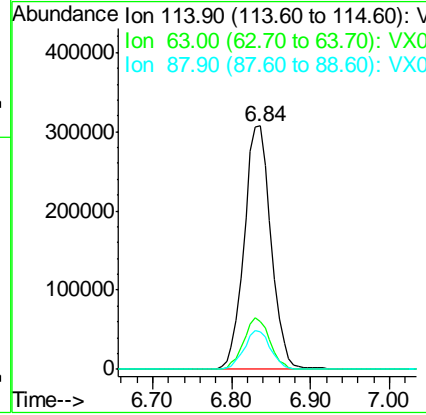
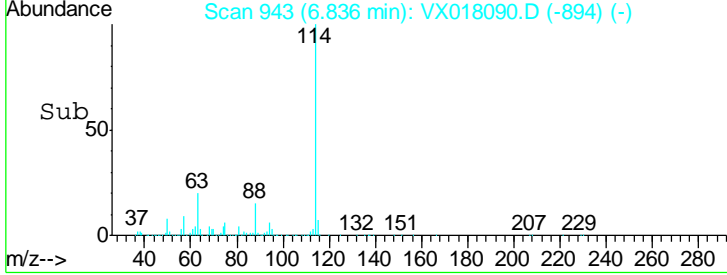
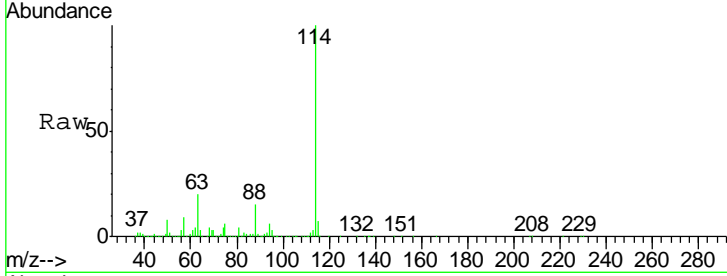




#34
 1,4-Difluorobenzene
 Concen: 50.000 ug/l
 RT: 6.84 min Scan# 943
 Delta R.T. -0.00 min
 Lab File: VX018090.D
 Acq: 27 Aug 2020 14:43

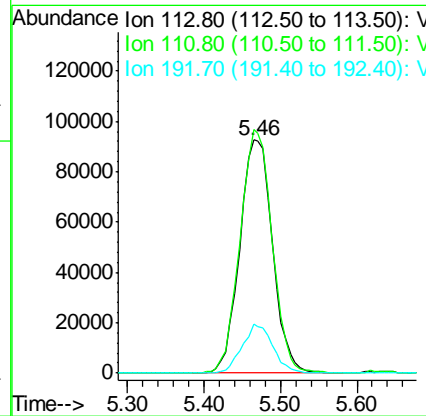
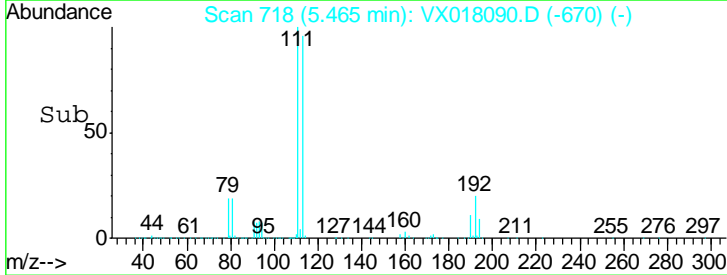
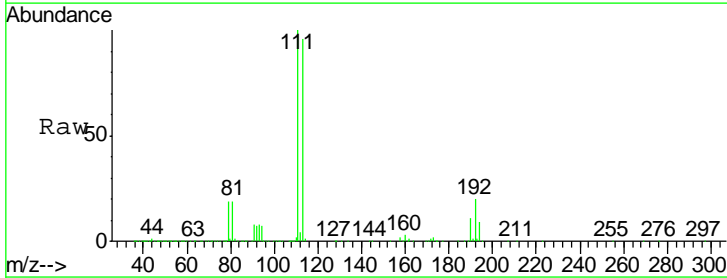
Instrument : MSVOA_X
 ClientSampled : VX0827WBL01

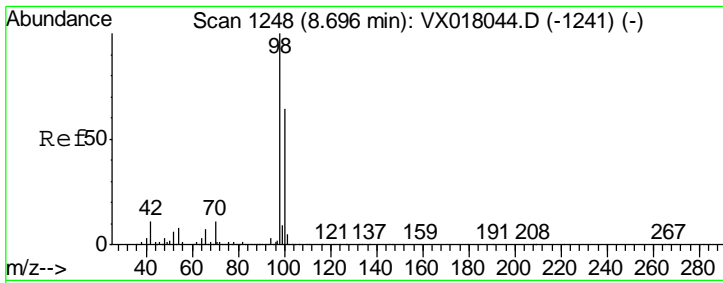
| Tgt Ion | Resp | Lower | Upper |
|---------|--------|-------|-------|
| 114 | 730004 | | |
| 63 | 19.9 | 0.0 | 42.6 |
| 88 | 15.3 | 0.0 | 31.8 |



#35
 Dibromofluoromethane
 Concen: 55.493 ug/l
 RT: 5.46 min Scan# 718
 Delta R.T. -0.01 min
 Lab File: VX018090.D
 Acq: 27 Aug 2020 14:43

| Tgt Ion | Resp | Lower | Upper |
|---------|--------|-------|-------|
| 113 | 275896 | | |
| 111 | 102.2 | 81.6 | 122.4 |
| 192 | 19.8 | 15.8 | 23.8 |

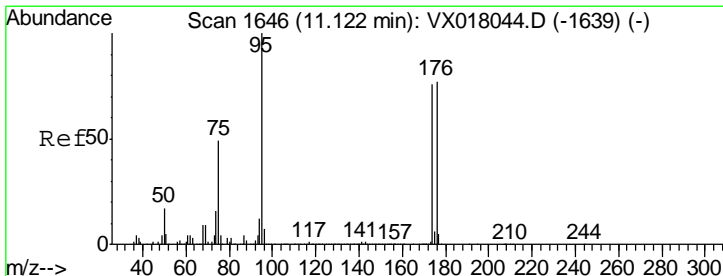
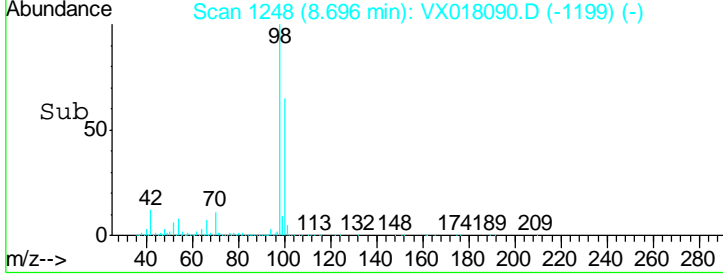
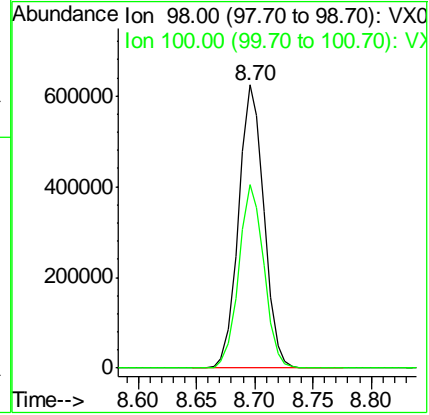
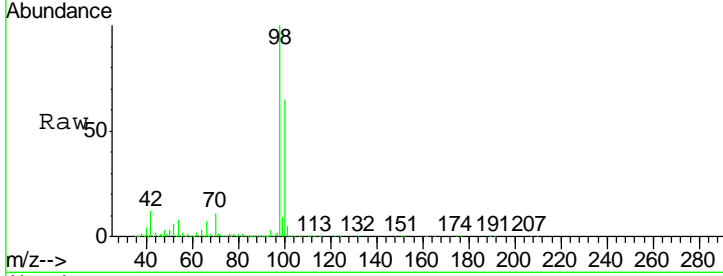




#50
Toluene-d8
Concen: 51.317 ug/l
RT: 8.70 min Scan# 1248
Delta R.T. -0.00 min
Lab File: VX018090.D
Acq: 27 Aug 2020 14:43

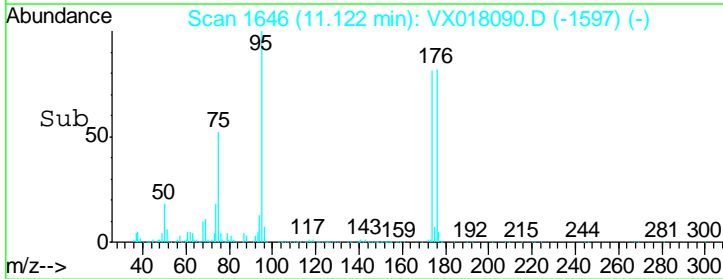
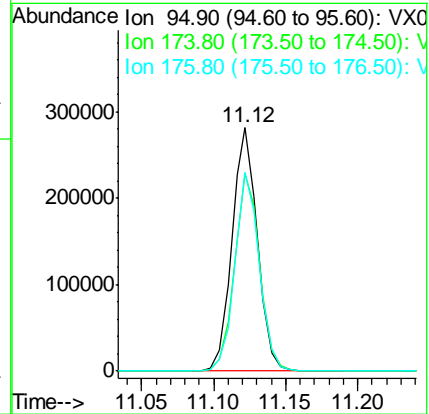
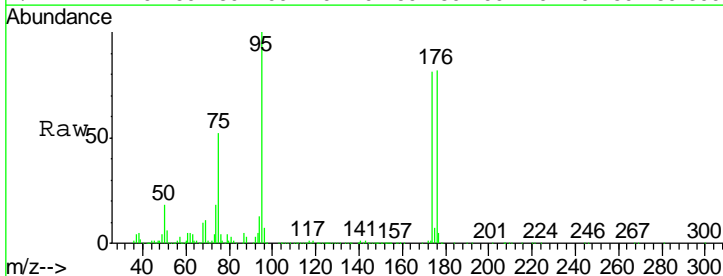
Instrument : MSVOA_X
ClientSampled : VX0827WBL01

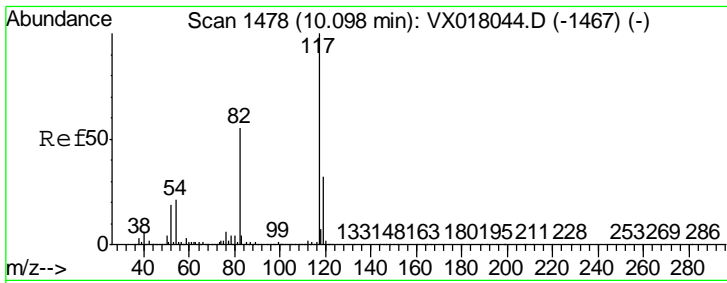
| Tgt Ion | Resp | Lower | Upper |
|---------|------|-------|-------|
| 98 | 100 | | |
| 100 | 64.1 | 52.2 | 78.4 |



#62
4-Bromofluorobenzene
Concen: 47.704 ug/l
RT: 11.12 min Scan# 1646
Delta R.T. -0.00 min
Lab File: VX018090.D
Acq: 27 Aug 2020 14:43

| Tgt Ion | Resp | Lower | Upper |
|---------|------|-------|-------|
| 95 | 100 | | |
| 174 | 80.9 | 0.0 | 160.2 |
| 176 | 79.1 | 0.0 | 155.8 |

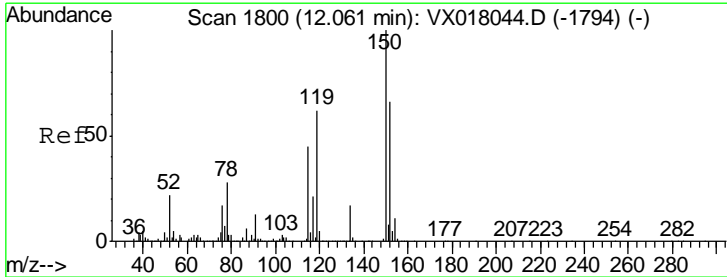
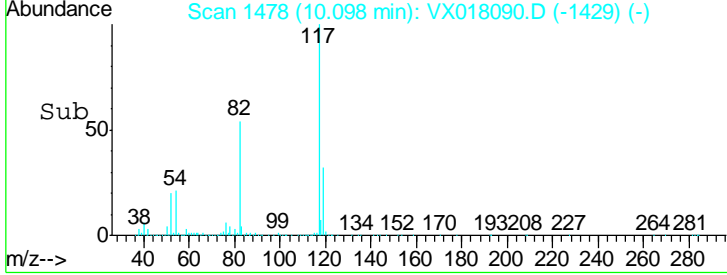
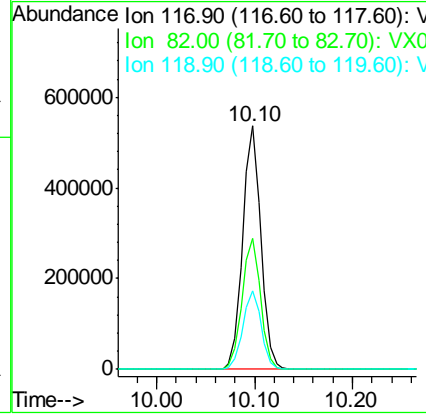
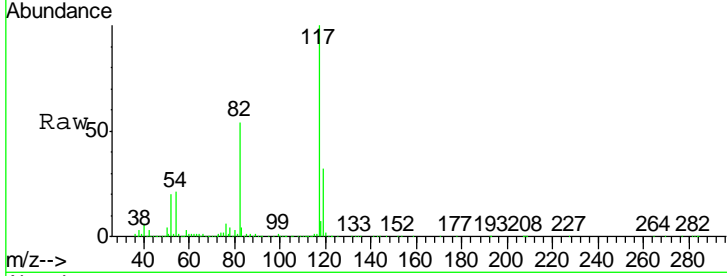




#63
 Chlorobenzene-d5
 Concen: 50.000 ug/l
 RT: 10.10 min Scan# 1478
 Delta R.T. -0.00 min
 Lab File: VX018090.D
 Acq: 27 Aug 2020 14:43

Instrument : MSVOA_X
 ClientSampled : VX0827WBL01

| Tgt Ion | Resp | Lower | Upper |
|---------|--------|-------|-------|
| 117 | 692351 | | |
| 82 | 53.7 | 44.2 | 66.2 |
| 119 | 32.3 | 25.7 | 38.5 |



#72
 1,4-Dichlorobenzene-d4
 Concen: 50.000 ug/l
 RT: 12.06 min Scan# 1800
 Delta R.T. -0.00 min
 Lab File: VX018090.D
 Acq: 27 Aug 2020 14:43

| Tgt Ion | Resp | Lower | Upper |
|---------|--------|-------|-------|
| 152 | 326983 | | |
| 115 | 59.6 | 41.5 | 124.5 |
| 150 | 155.1 | 0.0 | 343.8 |

