

Data Path : Z:\voasrv\HPCHEM1\MSVOA_X\Data\VX082721\
 Data File : VX023993.D
 Acq On : 27 Aug 2021 15:33
 Operator : JC/MD
 Sample : M3561-10
 Misc : 5.0mL/MSVOA_X/WATER
 ALS Vial : 17 Sample Multiplier: 1

Instrument :
 MSVOA_X
 ClientSampleId :
 VE1-4

Integration Parameters: RTEINT.P
 Integrator: RTE
 Smoothing : ON
 Sampling : 1
 Start Thrs : 0.2
 Stop Thrs : 0
 Filtering: 5
 Min Area: 3 % of largest Peak
 Max Peaks: 100
 Peak Location: TOP

If leading or trailing edge < 100 prefer < Baseline drop else tangent >
 Peak separation: 5

Method : Z:\voasrv\HPCHEM1\MSVOA_X\Method\82X081721W.M
 Title : SW846 8260

Signal : TIC: VX023993.D\data.ms

peak #	R.T. min	first scan	max scan	last scan	PK TY	peak height	corr. area	corr. % max.	% of total
1	2.550	232	240	246	rBV	8478	15487	1.97%	0.353%
2	5.397	695	707	721	rBV2	92083	265404	33.78%	6.042%
3	5.562	723	734	748	rVB	147091	418723	53.29%	9.532%
4	5.964	789	800	817	rBV2	102741	271158	34.51%	6.173%
5	6.769	921	932	948	rBV	243462	566447	72.09%	12.895%
6	8.653	1234	1241	1259	rBV	503070	785742	100.00%	17.887%
7	10.055	1466	1471	1485	rBV	515595	703315	89.51%	16.010%
8	11.085	1634	1640	1651	rBV	417015	528578	67.27%	12.032%
9	12.024	1789	1794	1804	rVB	498005	616622	78.48%	14.037%
10	12.920	1935	1941	1945	rBV6	5848	9160	1.17%	0.209%
11	13.798	2081	2085	2091	rVB7	5183	10621	1.35%	0.242%
12	13.859	2091	2095	2098	rBV4	7963	10841	1.38%	0.247%
13	13.926	2100	2106	2111	rBV2	12259	20706	2.64%	0.471%
14	14.213	2149	2153	2156	rBV2	14204	20793	2.65%	0.473%
15	14.243	2156	2158	2165	rVB4	11089	16582	2.11%	0.377%
16	14.322	2165	2171	2175	rBV	14508	19429	2.47%	0.442%
17	14.377	2175	2180	2184	rBV7	6505	10719	1.36%	0.244%
18	14.487	2193	2198	2201	rBV4	8393	14100	1.79%	0.321%
19	14.615	2211	2219	2225	rBV4	7518	19923	2.54%	0.454%
20	14.676	2225	2229	2232	rBV3	6492	8063	1.03%	0.184%
21	14.792	2242	2248	2250	rBV6	5840	9533	1.21%	0.217%
22	14.914	2261	2268	2277	rBV6	3943	12961	1.65%	0.295%
23	15.188	2308	2313	2316	rVB2	10293	14294	1.82%	0.325%
24	15.810	2410	2415	2418	rVV5	7714	13566	1.73%	0.309%
25	15.847	2418	2421	2429	rVB8	5630	10154	1.29%	0.231%

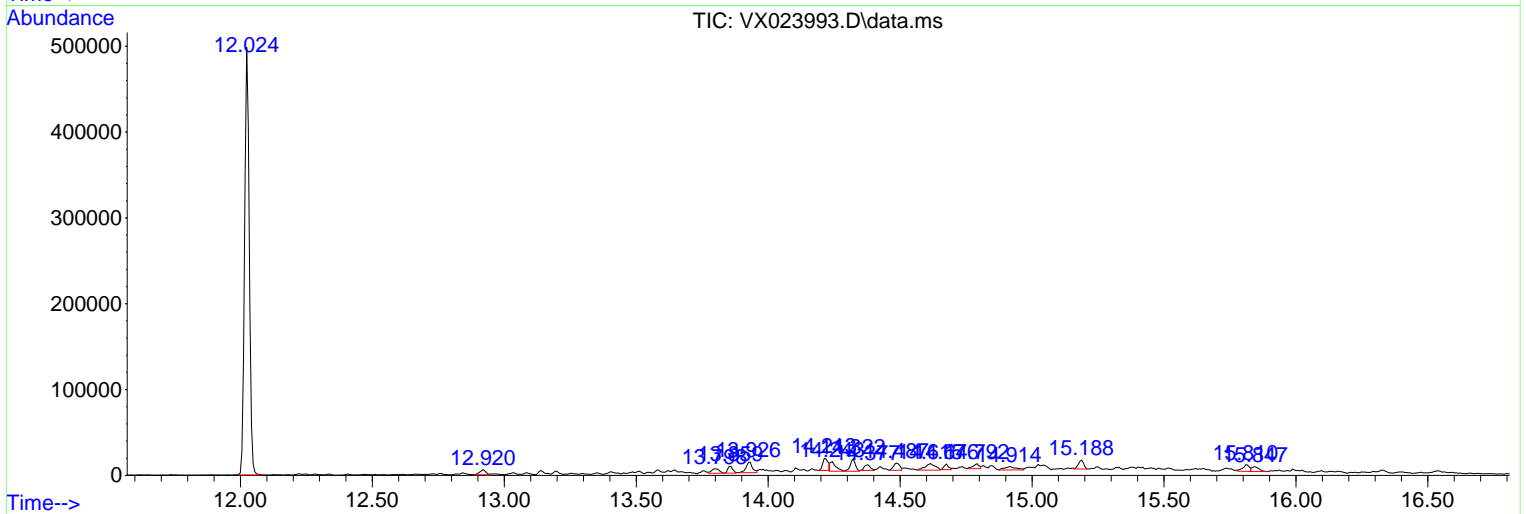
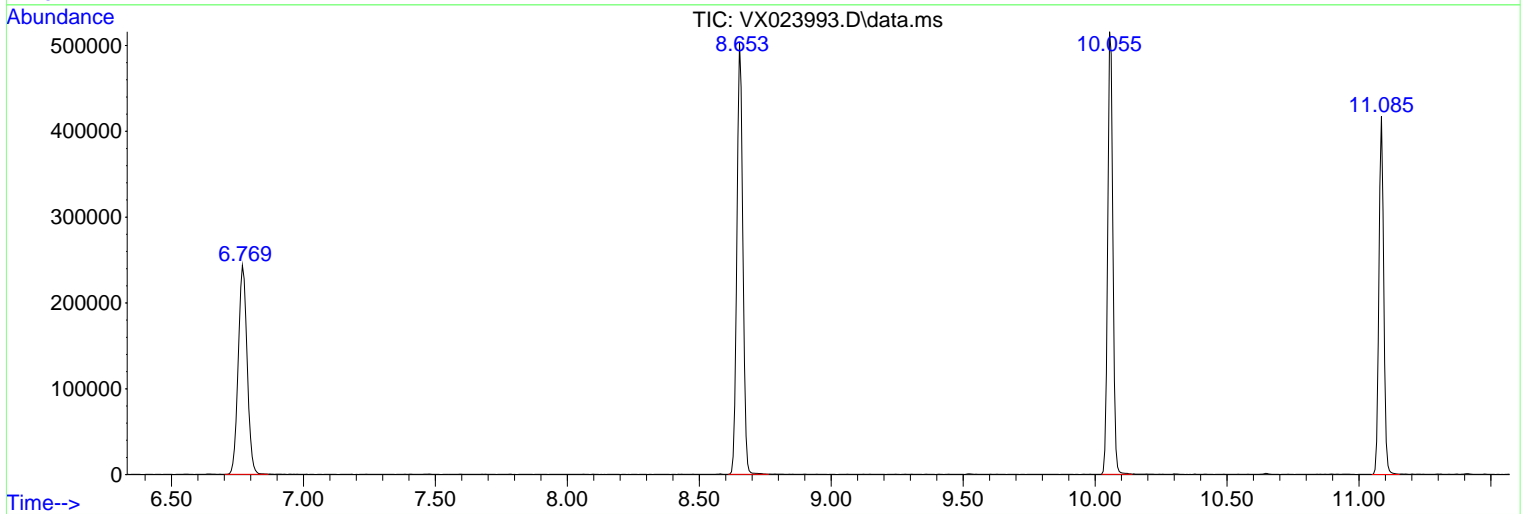
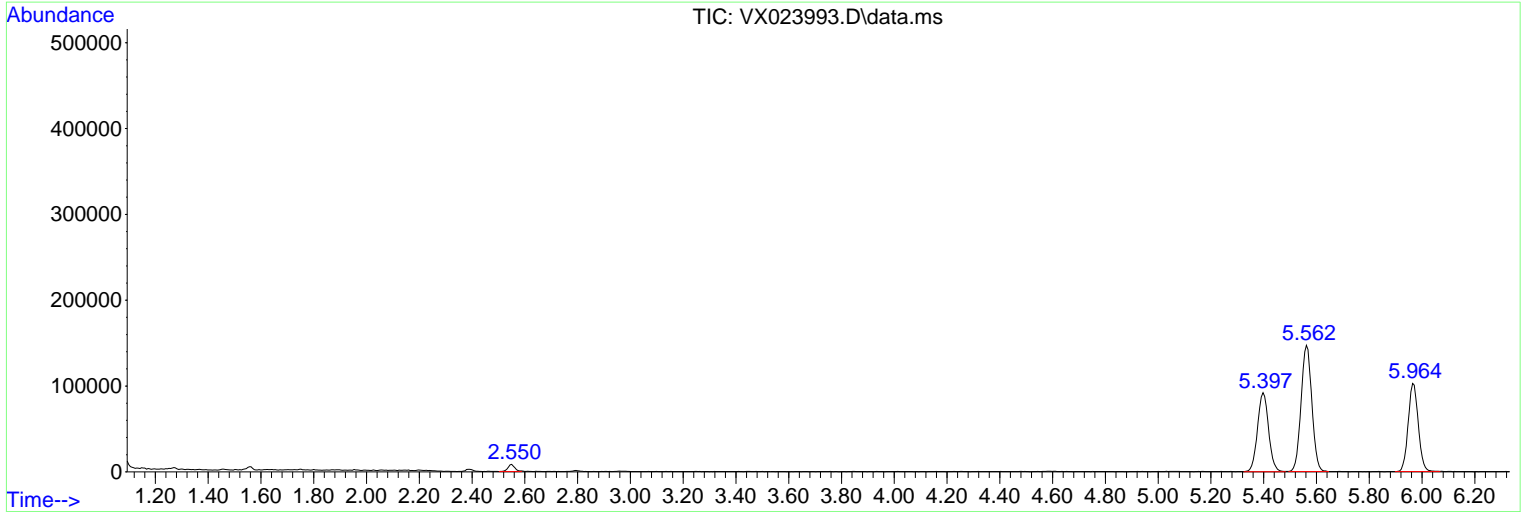
Sum of corrected areas: 4392921

Data Path : Z:\voasrv\HPCHEM1\MSVOA_X\Data\VX082721\
 Data File : VX023993.D
 Acq On : 27 Aug 2021 15:33
 Operator : JC/MD
 Sample : M3561-10
 Misc : 5.0mL/MSVOA_X/WATER
 ALS Vial : 17 Sample Multiplier: 1

Instrument :
 MSVOA_X
 ClientSampleId :
 VE1-4

Quant Method : Z:\voasrv\HPCHEM1\MSVOA_X\Method\82X081721W.M
 Quant Title : SW846 8260

TIC Library : C:\Database\NIST20.L
 TIC Integration Parameters: LSCINT.P



Library Search Compound Report

Data Path : Z:\voasrv\HPCHEM1\MSVOA_X\Data\VX082721\
Data File : VX023993.D
Acq On : 27 Aug 2021 15:33
Operator : JC/MD
Sample : M3561-10
Misc : 5.0mL/MSVOA_X/WATER
ALS Vial : 17 Sample Multiplier: 1

Instrument :
MSVOA_X
ClientSampleId :
VE1-4

Quant Method : Z:\voasrv\HPCHEM1\MSVOA_X\Method\82X081721W.M
Quant Title : SW846 8260

TIC Library : C:\Database\NIST20.L
TIC Integration Parameters: LSCINT.P

No Library Search Compounds Detected

Data Path : Z:\voasrv\HPCHEM1\MSVOA_X\Data\VX082721\
Data File : VX023993.D
Acq On : 27 Aug 2021 15:33
Operator : JC/MD
Sample : M3561-10
Misc : 5.0mL/MSVOA_X/WATER
ALS Vial : 17 Sample Multiplier: 1

Instrument :
MSVOA_X
ClientSampled :
VE1-4

Quant Method : Z:\voasrv\HPCHEM1\MSVOA_X\Method\82X081721W.M
Quant Title : SW846 8260

TIC Library : C:\Database\NIST20.L
TIC Integration Parameters: LSCINT.P

TIC Top Hit name	RT	EstConc	Units	Response	--Internal Standard--		
					#	RT	Resp Conc
