

Data Path : Z:\voasrv\HPCHEM1\MSVOA_X\Data\VX082722\
 Data File : VX030895.D
 Acq On : 28 Aug 2022 02:04
 Operator : JC/MD
 Sample : N4360-15
 Misc : 5.0mL/MSVOA_X/WATER
 ALS Vial : 37 Sample Multiplier: 1

Instrument :
 MSVOA_X
 ClientSampleId :
 FB02-20220823

Quant Time: Aug 29 01:14:58 2022
 Quant Method : Z:\voasrv\HPCHEM1\MSVOA_X\Method\82X082522W.M
 Quant Title : SW846 8260
 QLast Update : Fri Aug 26 02:03:28 2022
 Response via : Initial Calibration

Compound	R.T.	QIon	Response	Conc	Units	Dev(Min)

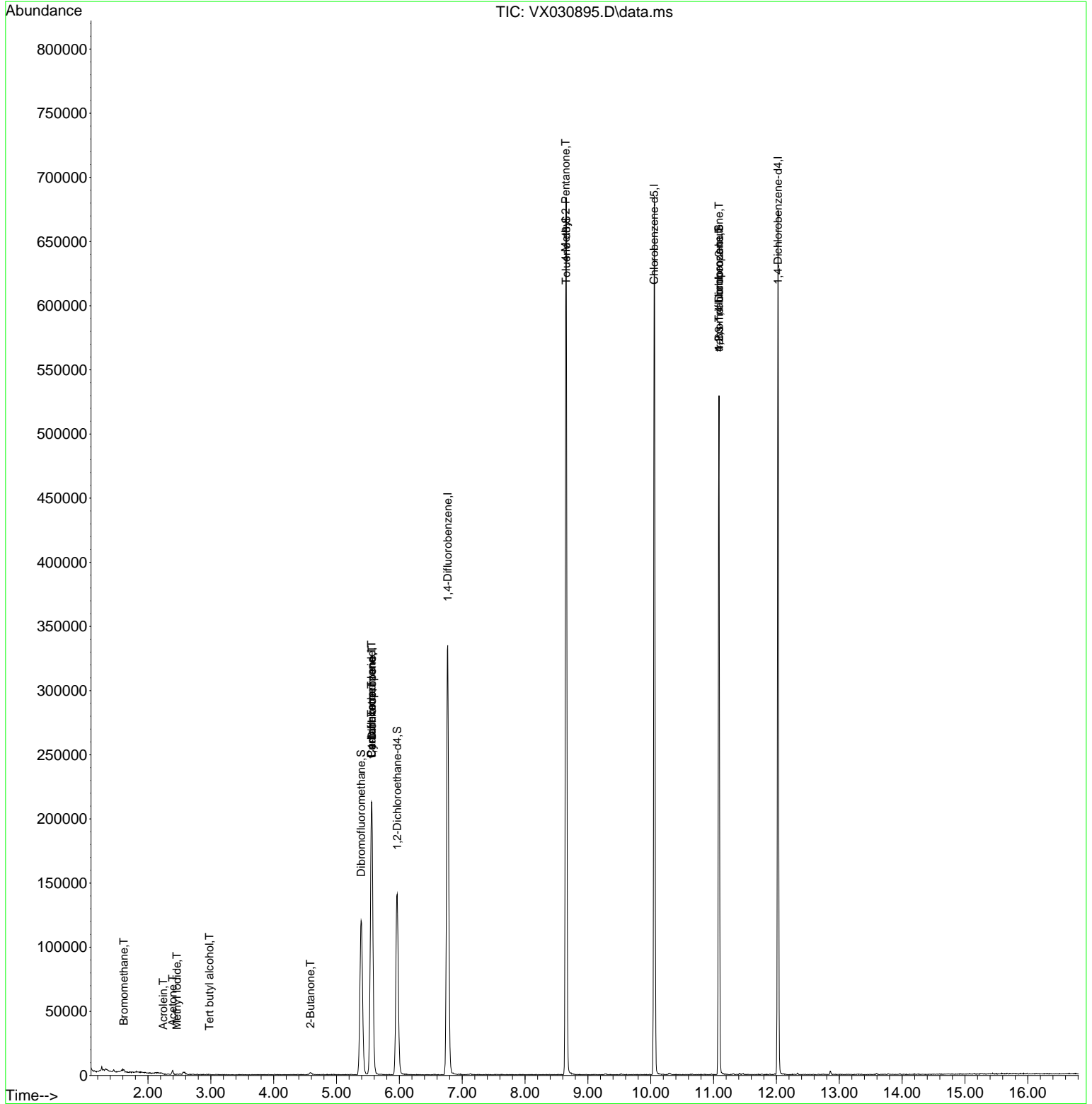
Internal Standards						
1) Pentafluorobenzene	5.556	168	194029	50.000	ug/l	0.00
34) 1,4-Difluorobenzene	6.769	114	333865	50.000	ug/l	0.00
63) Chlorobenzene-d5	10.055	117	298189	50.000	ug/l	0.00
72) 1,4-Dichlorobenzene-d4	12.024	152	124642	50.000	ug/l	0.00
System Monitoring Compounds						
33) 1,2-Dichloroethane-d4	5.964	65	141131	61.837	ug/l	0.00
Spiked Amount	50.000	Range	74 - 125	Recovery	=	123.680%
35) Dibromofluoromethane	5.391	113	107770	52.523	ug/l	0.00
Spiked Amount	50.000	Range	75 - 124	Recovery	=	105.040%
50) Toluene-d8	8.653	98	405142	56.662	ug/l	0.00
Spiked Amount	50.000	Range	86 - 113	Recovery	=	113.320%#
62) 4-Bromofluorobenzene	11.085	95	132184	49.656	ug/l	0.00
Spiked Amount	50.000	Range	83 - 123	Recovery	=	99.320%
Target Compounds						
						Qvalue
3) Chloromethane	1.288	50	387	Below Cal	#	82
4) Vinyl Chloride	1.319	62	20	Below Cal	#	1
5) Bromomethane	1.618	94	316	0.350	ug/l	82
6) Chloroethane	1.685	64	313	Below Cal	#	41
10) Methyl Iodide	2.459	142	386	4.254	ug/l	# 82
11) Tert butyl alcohol	2.977	59	131	0.264	ug/l	# 74
13) Acrolein	2.240	56	25	10.107	ug/l	# 14
16) Acetone	2.392	43	3197	3.031	ug/l	93
17) Carbon Disulfide	2.520	76	555	Below Cal	#	74
20) Methylene Chloride	2.782	84	54	Below Cal	#	57
25) 2-Butanone	4.587	43	3405	2.004	ug/l	95
31) Cyclohexane	5.556	56	4803	1.646	ug/l	# 23
36) 1,1-Dichloropropene	5.562	75	17245	6.172	ug/l	# 44
38) Carbon Tetrachloride	5.556	117	21325	7.236	ug/l	# 16
51) 4-Methyl-2-Pentanone	8.647	43	1824	0.542	ug/l	# 1
76) 1,2,3-Trichloropropane	11.085	75	70453	25.800	ug/l	# 38
81) trans-1,4-Dichloro-2-b...	11.085	75	70453	83.242	ug/l	# 13

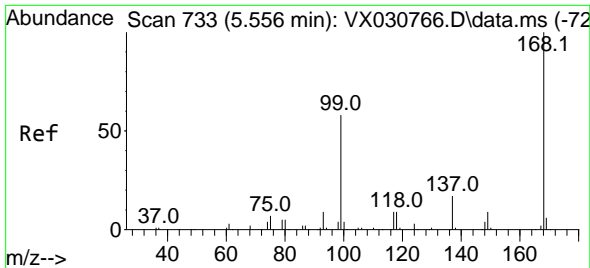
(#) = qualifier out of range (m) = manual integration (+) = signals summed

Data Path : Z:\voasrv\HPCHEM1\MSVOA_X\Data\VX082722\
 Data File : VX030895.D
 Acq On : 28 Aug 2022 02:04
 Operator : JC/MD
 Sample : N4360-15
 Misc : 5.0mL/MSVOA_X/WATER
 ALS Vial : 37 Sample Multiplier: 1

Instrument :
 MSVOA_X
ClientSampleId :
 FB02-20220823

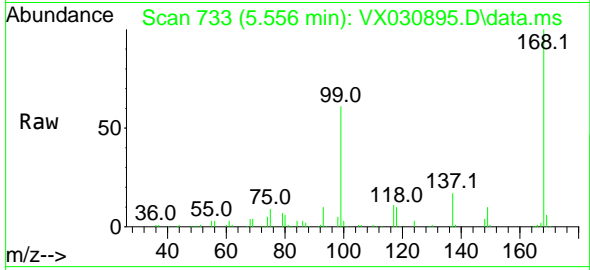
Quant Time: Aug 29 01:14:58 2022
 Quant Method : Z:\voasrv\HPCHEM1\MSVOA_X\Method\82X082522W.M
 Quant Title : SW846 8260
 QLast Update : Fri Aug 26 02:03:28 2022
 Response via : Initial Calibration



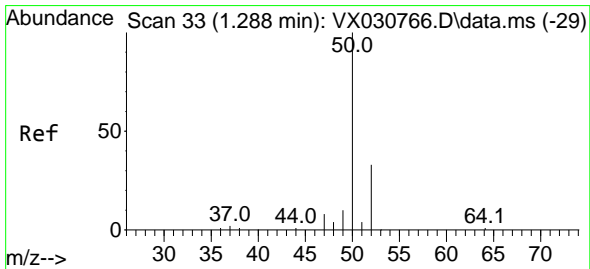
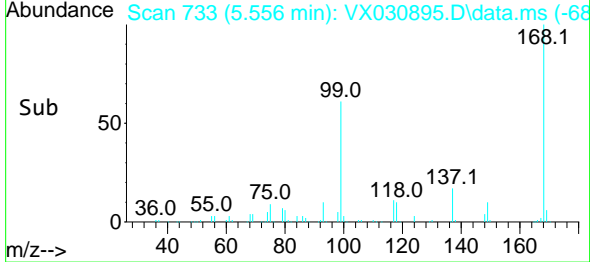
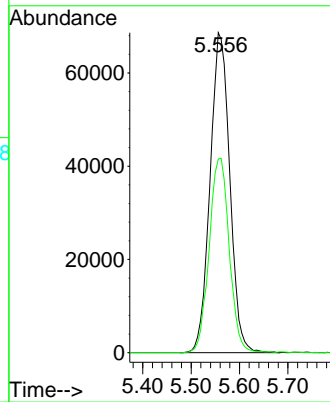


#1
 Pentafluorobenzene
 Concen: 50.000 ug/l
 RT: 5.556 min Scan# 71
 Delta R.T. -0.000 min
 Lab File: VX030895.D
 Acq: 28 Aug 2022 02:04

Instrument : MSVOA_X
 ClientSampleId : FB02-20220823

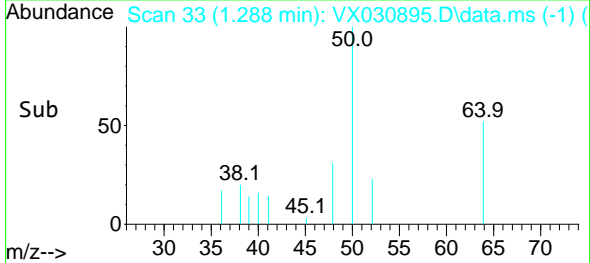
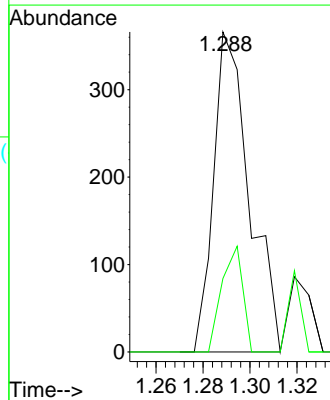
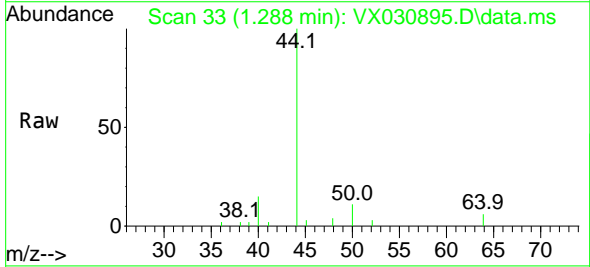


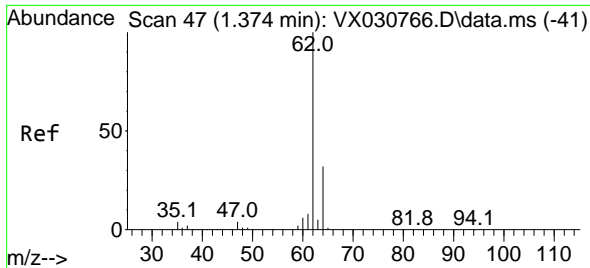
Tgt Ion:168 Resp: 194029
 Ion Ratio Lower Upper
 168 100
 99 60.5 44.0 66.0



#3
 Chloromethane
 Concen: Below Cal
 RT: 1.288 min Scan# 33
 Delta R.T. 0.000 min
 Lab File: VX030895.D
 Acq: 28 Aug 2022 02:04

Tgt Ion: 50 Resp: 387
 Ion Ratio Lower Upper
 50 100
 52 23.0 26.3 39.5#

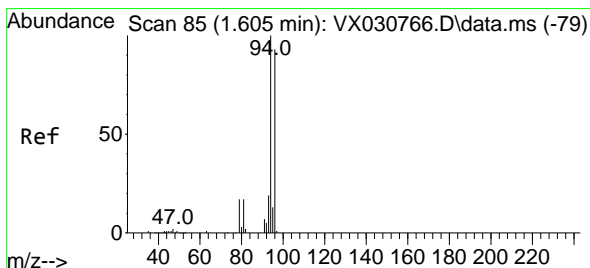
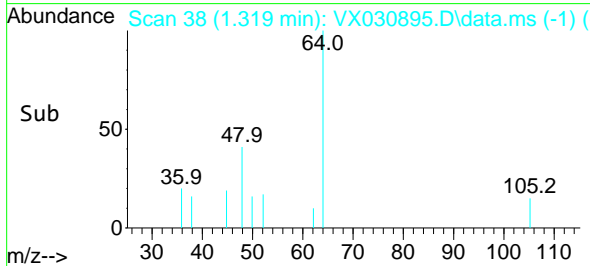
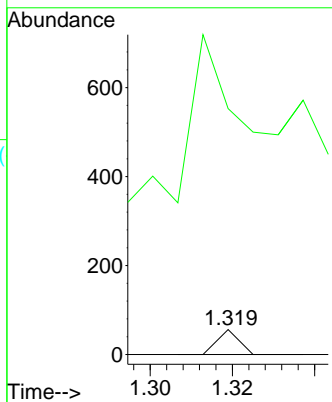
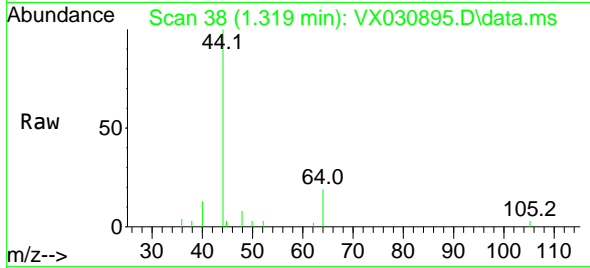




#4
 Vinyl Chloride
 Concen: Below Cal
 RT: 1.319 min Scan# 38
 Delta R.T. -0.055 min
 Lab File: VX030895.D
 Acq: 28 Aug 2022 02:04

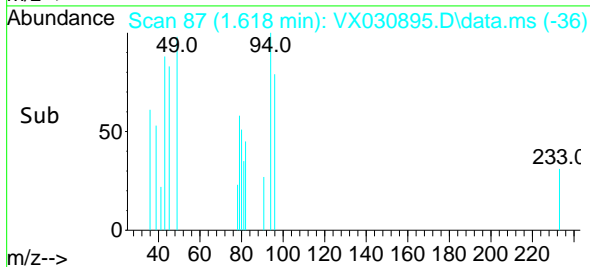
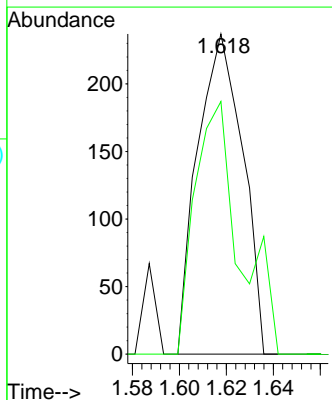
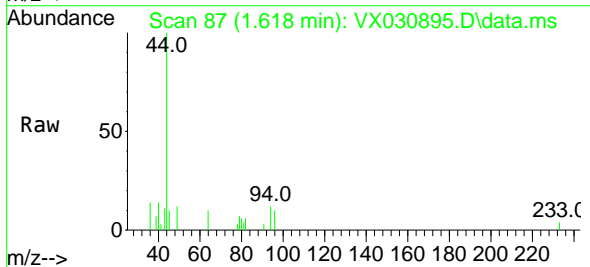
Instrument : MSVOA_X
 ClientSampleId : FB02-20220823

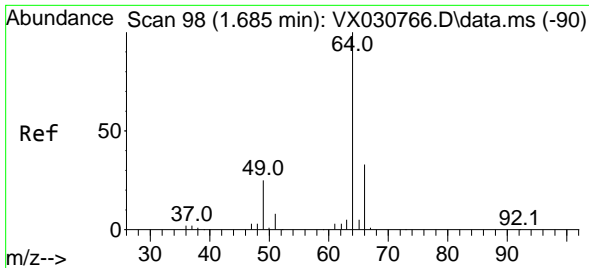
Tgt Ion: 62 Resp: 20
 Ion Ratio Lower Upper
 62 100
 64 378.6 25.2 37.8#



#5
 Bromomethane
 Concen: 0.350 ug/l
 RT: 1.618 min Scan# 87
 Delta R.T. 0.012 min
 Lab File: VX030895.D
 Acq: 28 Aug 2022 02:04

Tgt Ion: 94 Resp: 316
 Ion Ratio Lower Upper
 94 100
 96 78.9 76.9 115.3

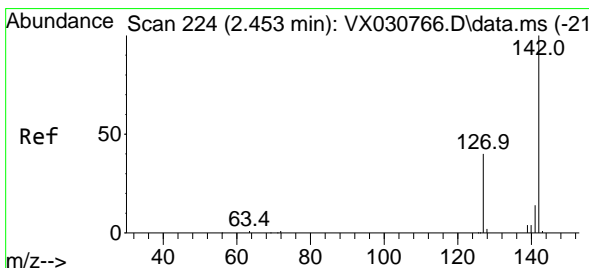
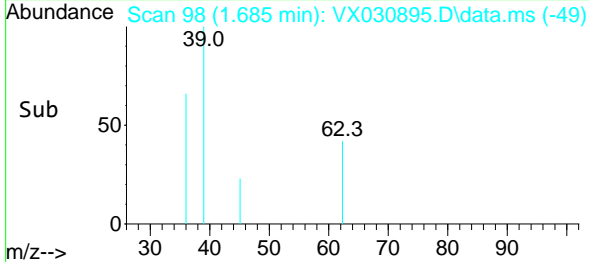
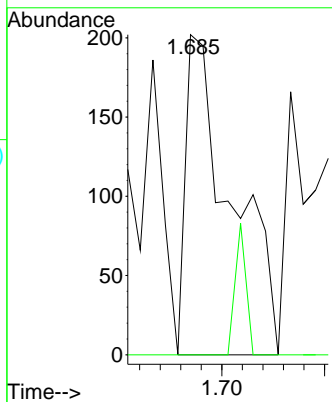
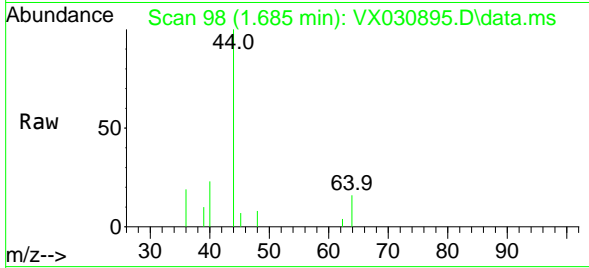




#6
 Chloroethane
 Concen: Below Cal
 RT: 1.685 min Scan# 91
 Delta R.T. -0.000 min
 Lab File: VX030895.D
 Acq: 28 Aug 2022 02:04

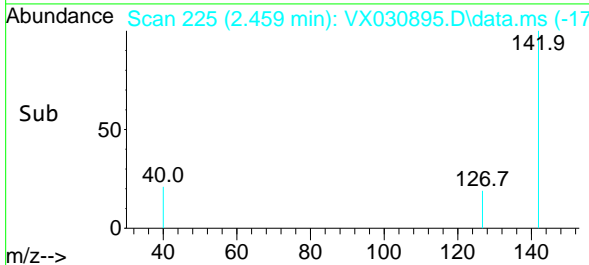
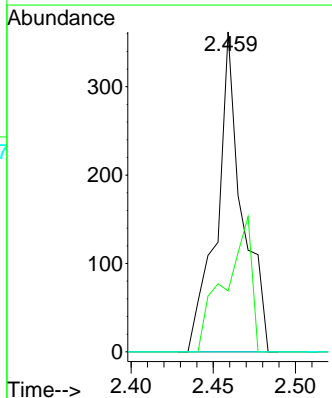
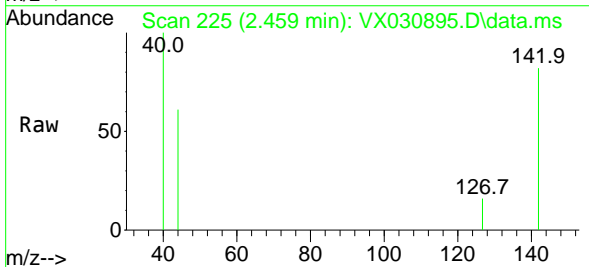
Instrument : MSVOA_X
 ClientSampleId : FB02-20220823

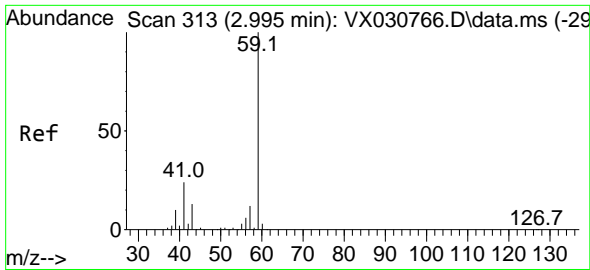
Tgt Ion: 64 Resp: 313
 Ion Ratio Lower Upper
 64 100
 66 0.0 27.2 40.8#



#10
 Methyl Iodide
 Concen: 4.254 ug/l
 RT: 2.459 min Scan# 225
 Delta R.T. 0.006 min
 Lab File: VX030895.D
 Acq: 28 Aug 2022 02:04

Tgt Ion:142 Resp: 386
 Ion Ratio Lower Upper
 142 100
 127 44.8 30.2 45.2
 141 0.0 11.3 16.9#

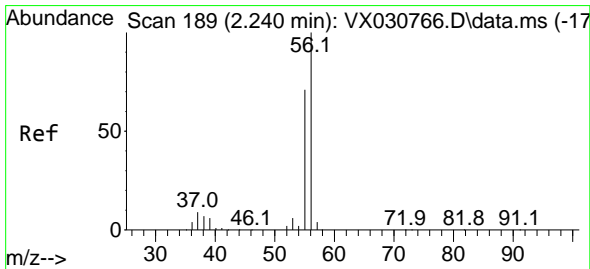
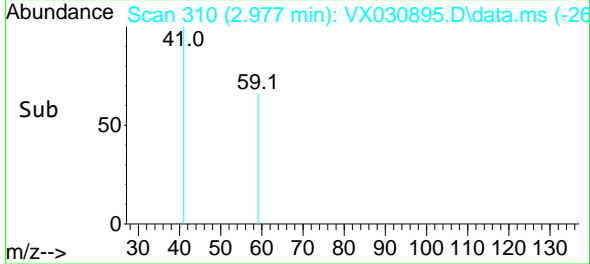
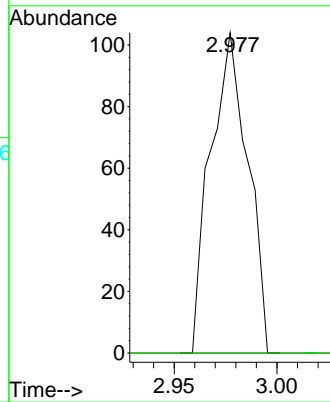
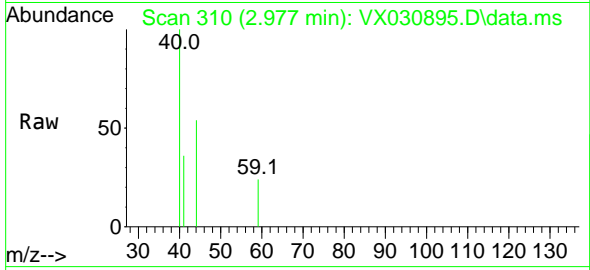




#11
 Tert butyl alcohol
 Concen: 0.264 ug/l
 RT: 2.977 min Scan# 311
 Delta R.T. -0.018 min
 Lab File: VX030895.D
 Acq: 28 Aug 2022 02:04

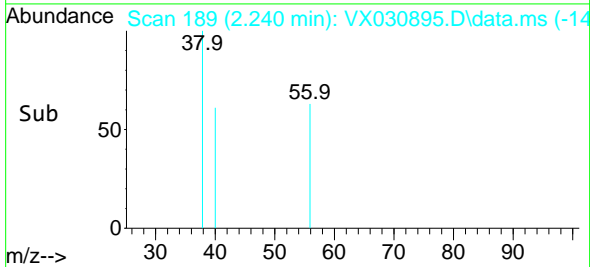
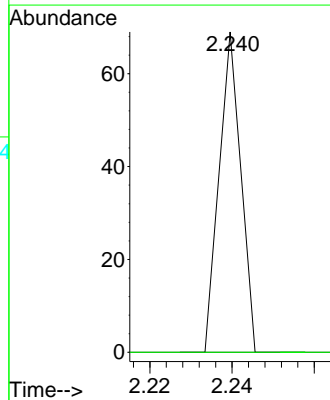
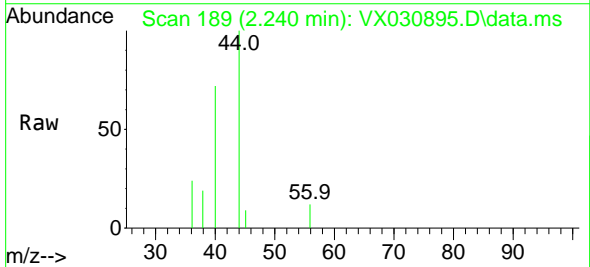
Instrument : MSVOA_X
 ClientSampleId : FB02-20220823

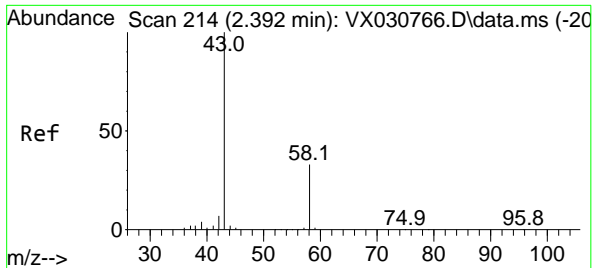
Tgt Ion: 59 Resp: 131
 Ion Ratio Lower Upper
 59 100
 57 0.0 7.4 11.2#



#13
 Acrolein
 Concen: 10.107 ug/l
 RT: 2.240 min Scan# 189
 Delta R.T. -0.001 min
 Lab File: VX030895.D
 Acq: 28 Aug 2022 02:04

Tgt Ion: 56 Resp: 25
 Ion Ratio Lower Upper
 56 100
 55 0.0 56.6 84.8#

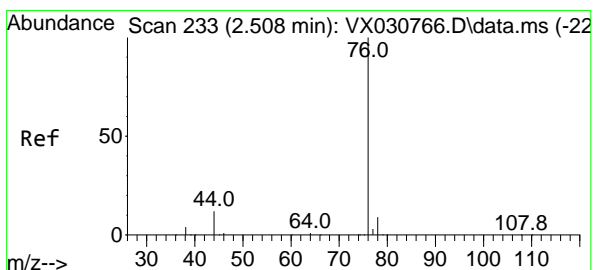
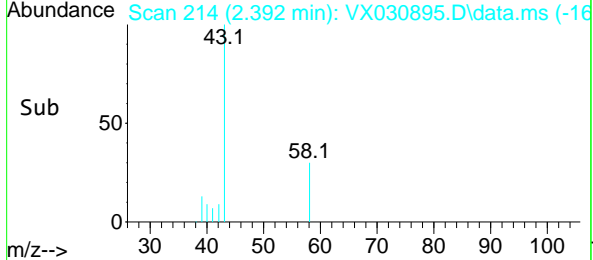
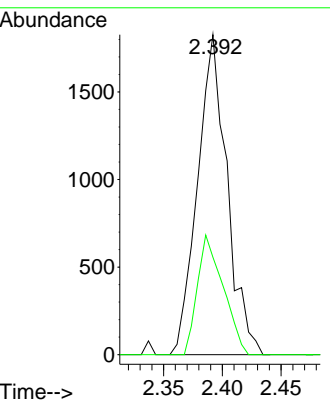
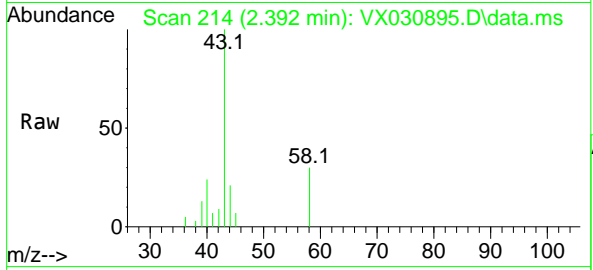




#16
 Acetone
 Concen: 3.031 ug/l
 RT: 2.392 min Scan# 214
 Delta R.T. -0.000 min
 Lab File: VX030895.D
 Acq: 28 Aug 2022 02:04

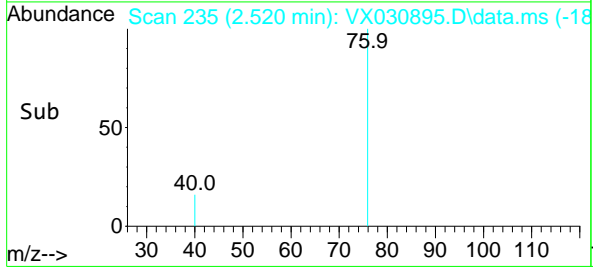
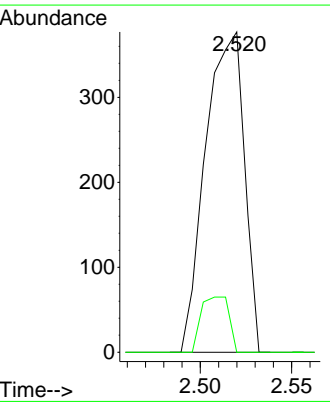
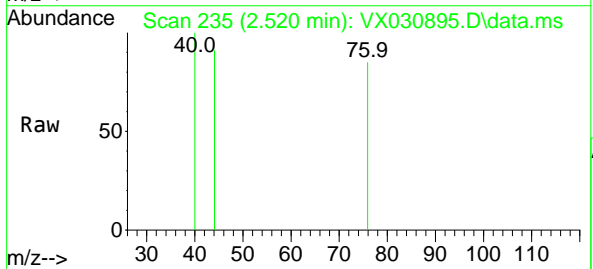
Instrument : MSVOA_X
 ClientSampleId : FB02-20220823

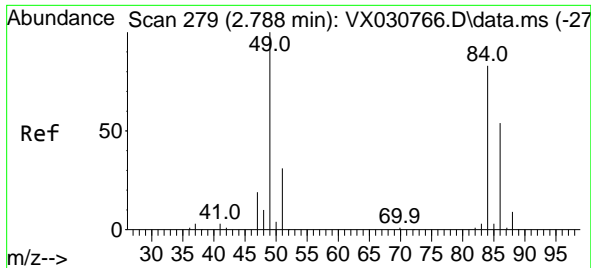
Tgt Ion: 43 Resp: 3197
 Ion Ratio Lower Upper
 43 100
 58 30.4 27.7 41.5



#17
 Carbon Disulfide
 Concen: Below Cal
 RT: 2.520 min Scan# 235
 Delta R.T. 0.012 min
 Lab File: VX030895.D
 Acq: 28 Aug 2022 02:04

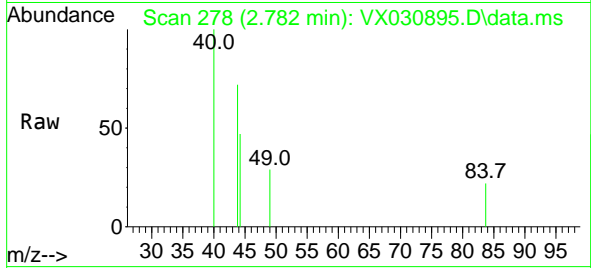
Tgt Ion: 76 Resp: 555
 Ion Ratio Lower Upper
 76 100
 78 0.0 7.8 11.6#





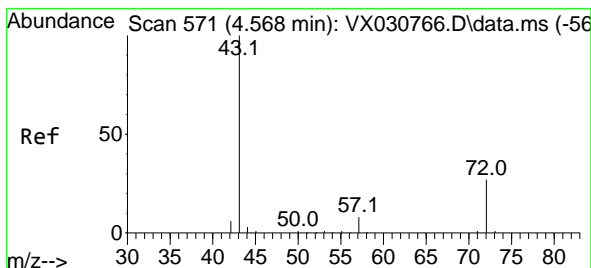
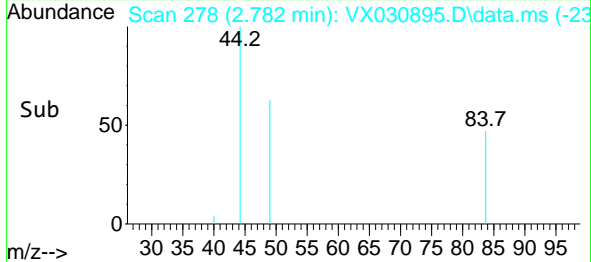
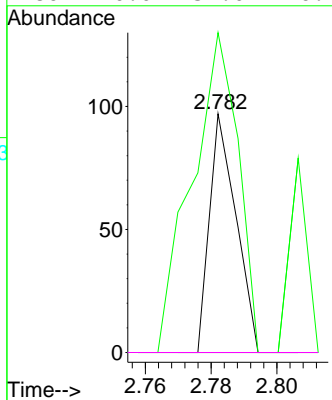
#20
 Methylene Chloride
 Concen: Below Cal
 RT: 2.782 min Scan# 21
 Delta R.T. -0.006 min
 Lab File: VX030895.D
 Acq: 28 Aug 2022 02:04

Instrument : MSVOA_X
 ClientSampleId : FB02-20220823



Tgt Ion: 84 Resp: 54

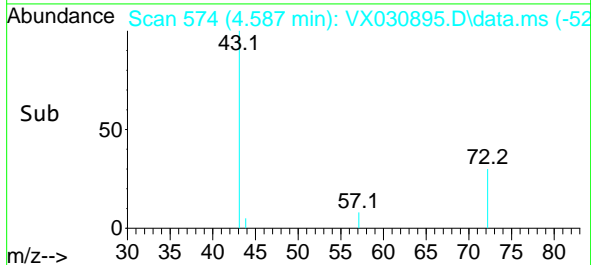
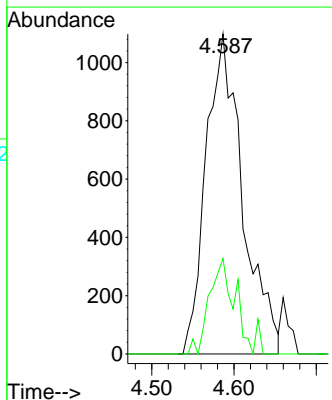
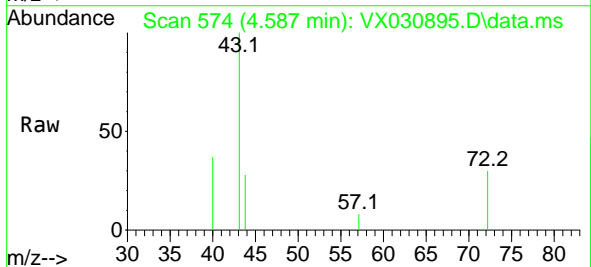
Ion	Ratio	Lower	Upper
84	100		
49	134.0	93.8	140.6
51	0.0	29.4	44.0#
86	0.0	51.0	76.4#

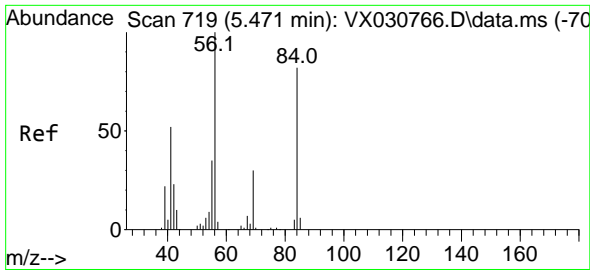


#25
 2-Butanone
 Concen: 2.004 ug/l
 RT: 4.587 min Scan# 574
 Delta R.T. 0.019 min
 Lab File: VX030895.D
 Acq: 28 Aug 2022 02:04

Tgt Ion: 43 Resp: 3405

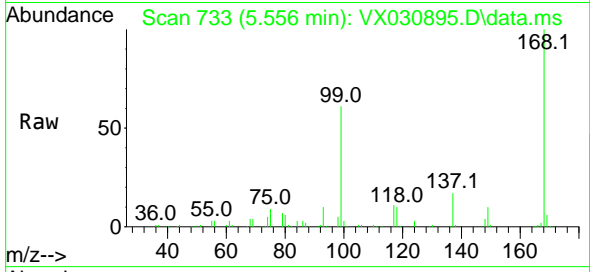
Ion	Ratio	Lower	Upper
43	100		
72	29.9	21.7	32.5



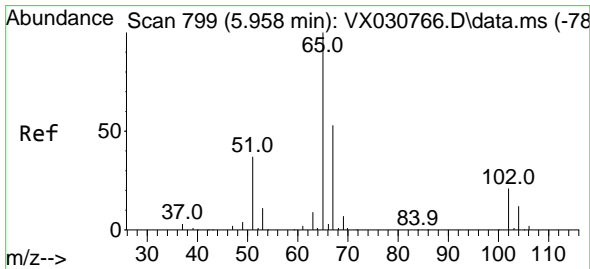
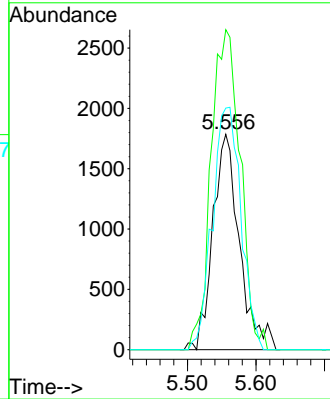
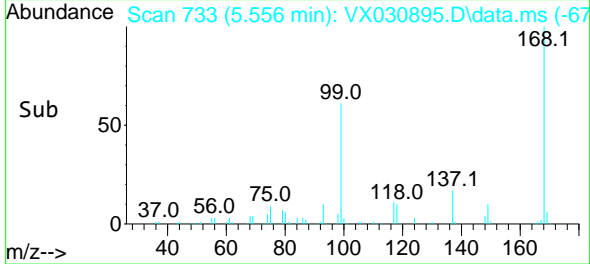


#31
 Cyclohexane
 Concen: 1.646 ug/l
 RT: 5.556 min Scan# 719
 Delta R.T. 0.085 min
 Lab File: VX030895.D
 Acq: 28 Aug 2022 02:04

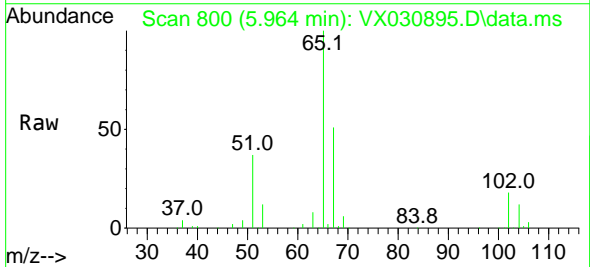
Instrument : MSVOA_X
 ClientSampleId : FB02-20220823



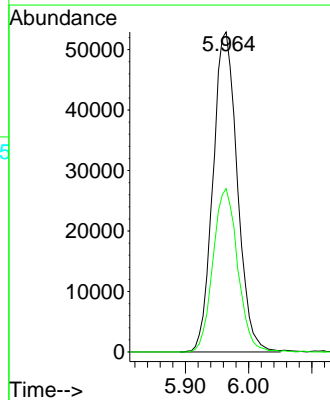
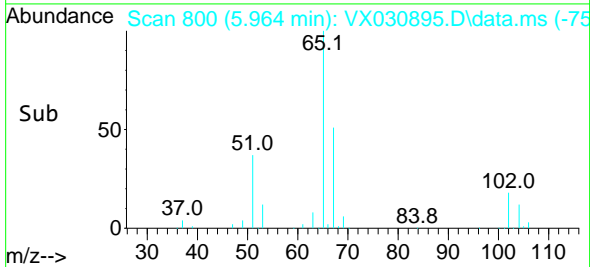
Tgt Ion: 56 Resp: 4803
 Ion Ratio Lower Upper
 56 100
 69 148.5 25.4 38.0#
 84 112.2 68.9 103.3#

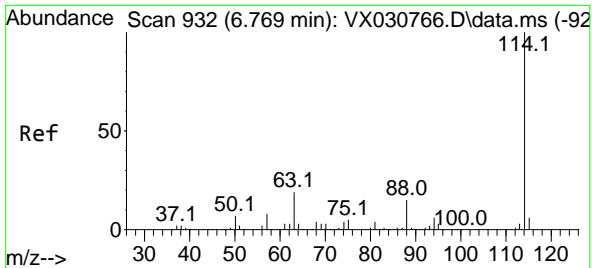


#33
 1,2-Dichloroethane-d4
 Concen: 61.837 ug/l
 RT: 5.964 min Scan# 800
 Delta R.T. 0.006 min
 Lab File: VX030895.D
 Acq: 28 Aug 2022 02:04



Tgt Ion: 65 Resp: 141131
 Ion Ratio Lower Upper
 65 100
 67 51.8 0.0 109.6



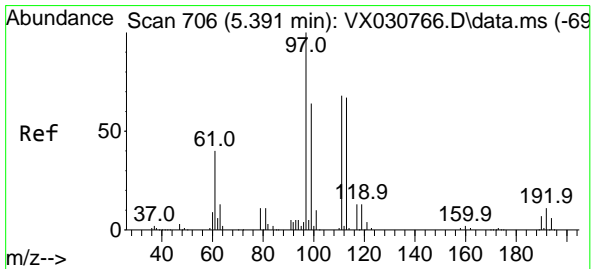
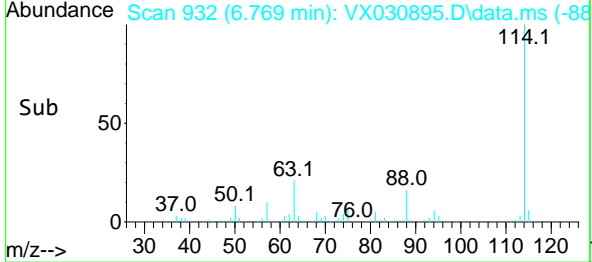
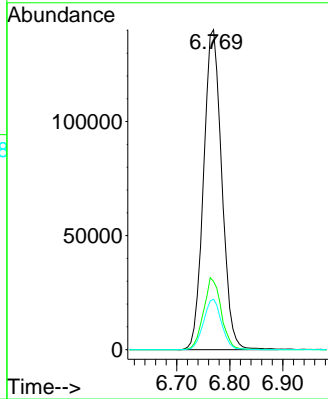
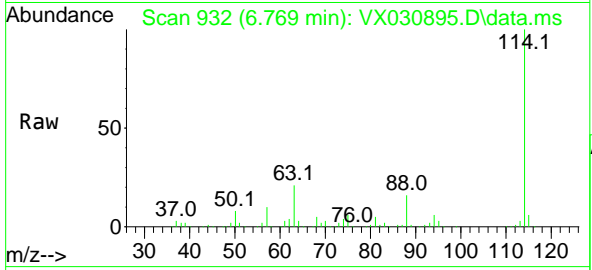


#34
 1,4-Difluorobenzene
 Concen: 50.000 ug/l
 RT: 6.769 min Scan# 91
 Delta R.T. 0.000 min
 Lab File: VX030895.D
 Acq: 28 Aug 2022 02:04

Instrument :
 MSVOA_X
 ClientSampleId :
 FB02-20220823

Tgt Ion:114 Resp: 333865

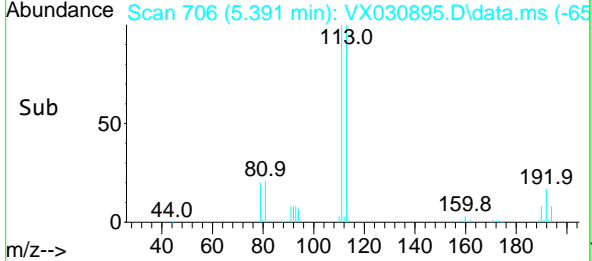
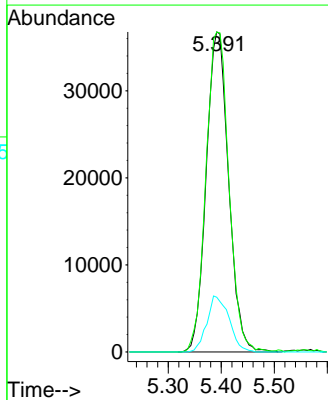
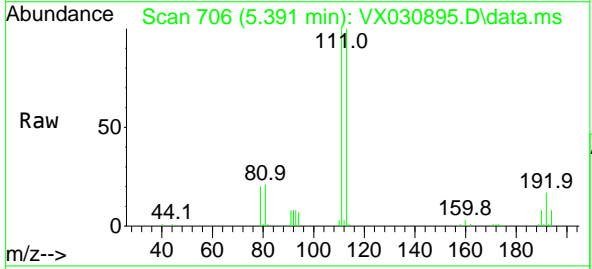
Ion	Ratio	Lower	Upper
114	100		
63	21.4	0.0	38.4
88	15.8	0.0	31.8

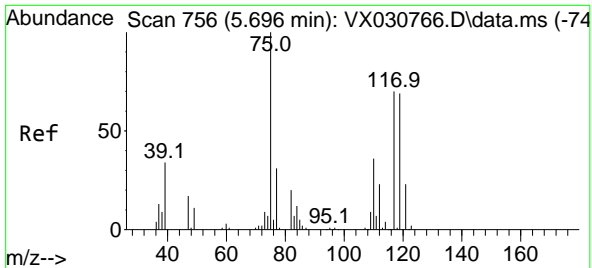


#35
 Dibromofluoromethane
 Concen: 52.523 ug/l
 RT: 5.391 min Scan# 706
 Delta R.T. 0.000 min
 Lab File: VX030895.D
 Acq: 28 Aug 2022 02:04

Tgt Ion:113 Resp: 107770

Ion	Ratio	Lower	Upper
113	100		
111	102.4	83.2	124.8
192	17.3	14.8	22.2

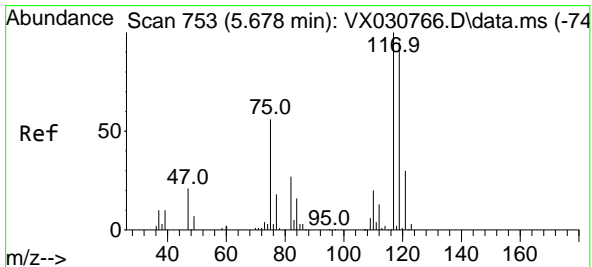
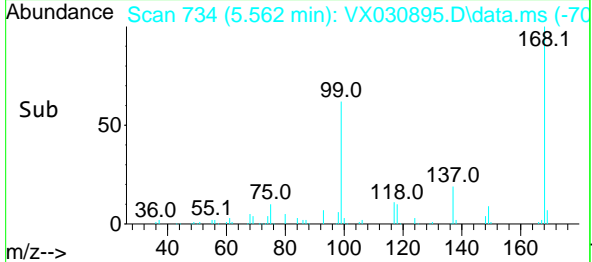
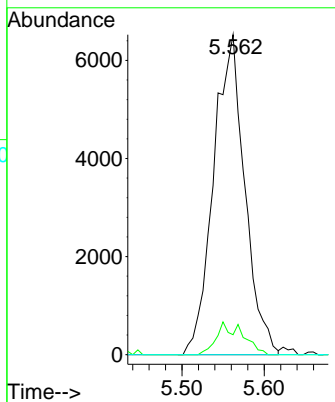
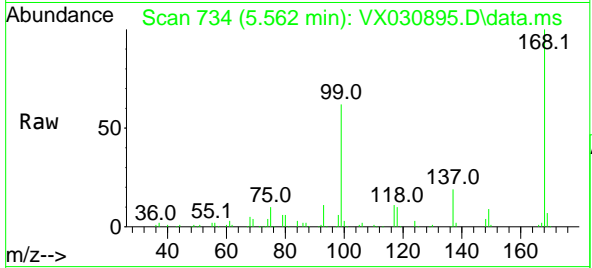




#36
 1,1-Dichloropropene
 Concen: 6.172 ug/l
 RT: 5.562 min Scan# 711
 Delta R.T. -0.134 min
 Lab File: VX030895.D
 Acq: 28 Aug 2022 02:04

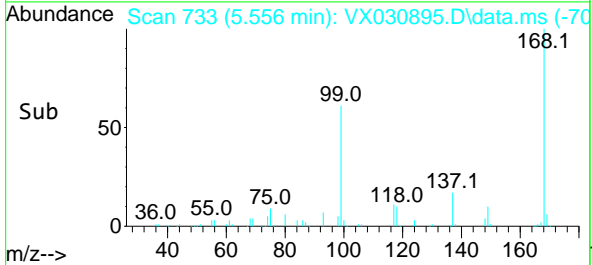
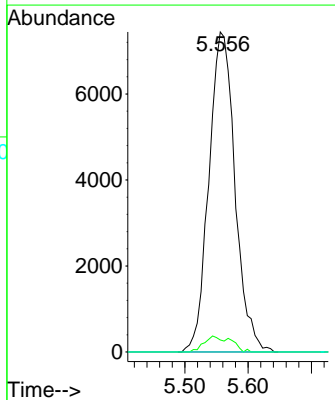
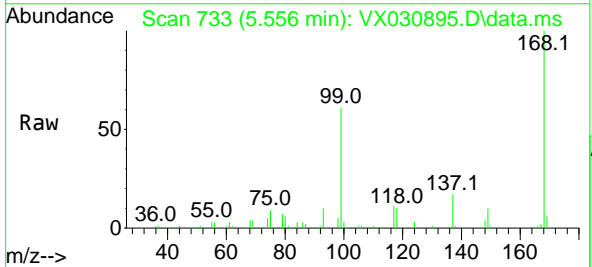
Instrument : MSVOA_X
 ClientSampleId : FB02-20220823

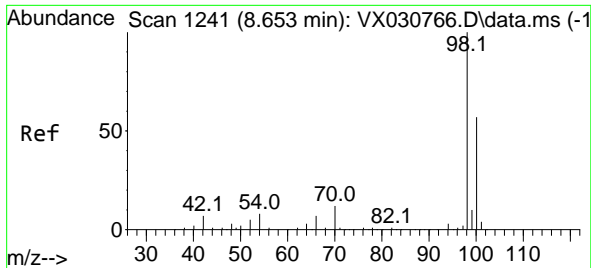
Tgt Ion: 75 Resp: 17245
 Ion Ratio Lower Upper
 75 100
 110 5.0 19.3 57.9#
 77 0.0 24.4 36.6#



#38
 Carbon Tetrachloride
 Concen: 7.236 ug/l
 RT: 5.556 min Scan# 733
 Delta R.T. -0.122 min
 Lab File: VX030895.D
 Acq: 28 Aug 2022 02:04

Tgt Ion:117 Resp: 21325
 Ion Ratio Lower Upper
 117 100
 119 3.7 74.1 111.1#
 121 0.0 25.8 38.8#

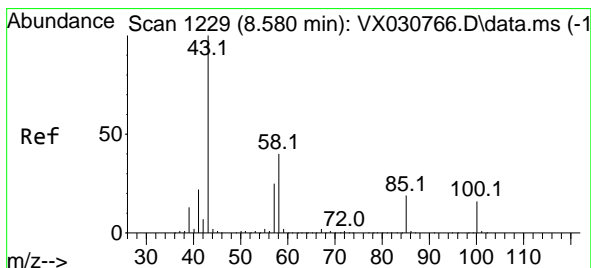
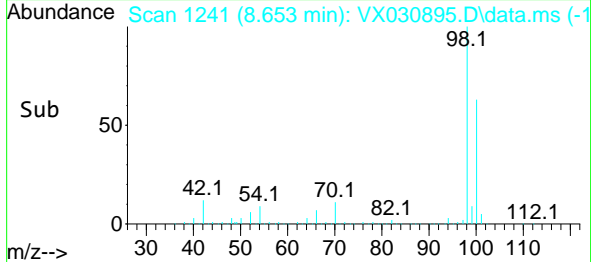
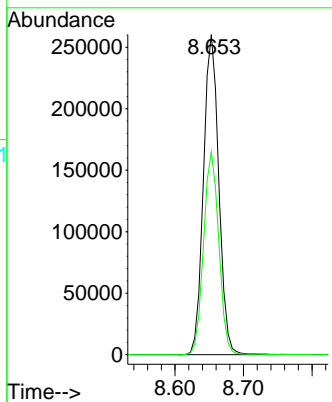
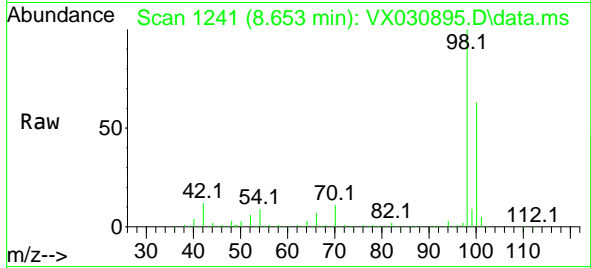




#50
 Toluene-d8
 Concen: 56.662 ug/l
 RT: 8.653 min Scan# 11
 Delta R.T. -0.000 min
 Lab File: VX030895.D
 Acq: 28 Aug 2022 02:04

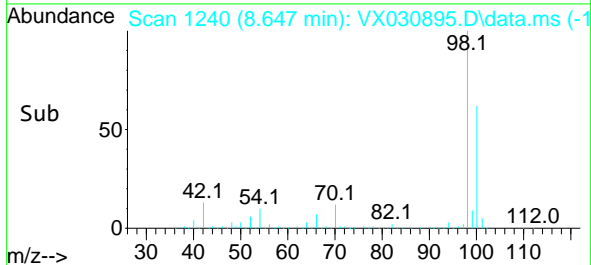
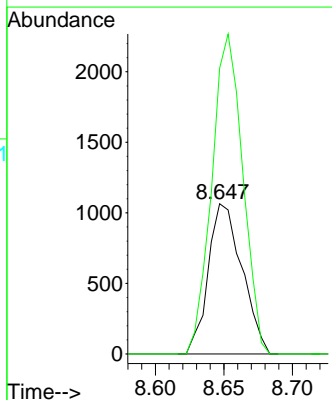
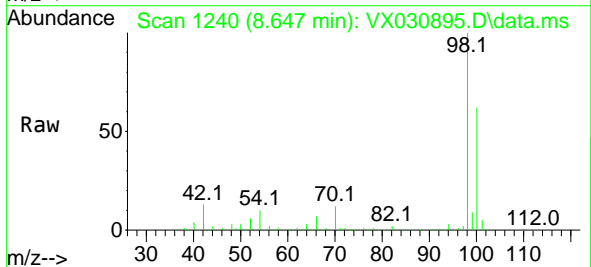
Instrument :
 MSVOA_X
 ClientSampleId :
 FB02-20220823

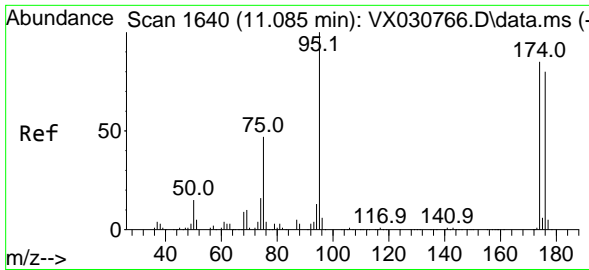
Tgt Ion: 98 Resp: 405142
 Ion Ratio Lower Upper
 98 100
 100 63.0 52.3 78.5



#51
 4-Methyl-2-Pentanone
 Concen: 0.542 ug/l
 RT: 8.647 min Scan# 1240
 Delta R.T. 0.067 min
 Lab File: VX030895.D
 Acq: 28 Aug 2022 02:04

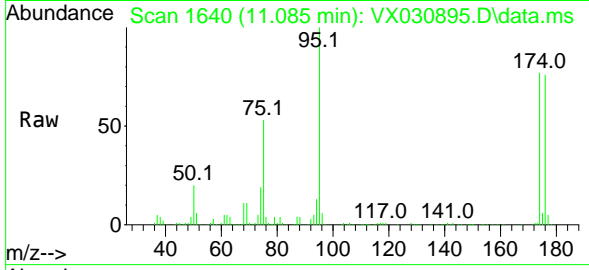
Tgt Ion: 43 Resp: 1824
 Ion Ratio Lower Upper
 43 100
 58 195.4 31.4 47.2#



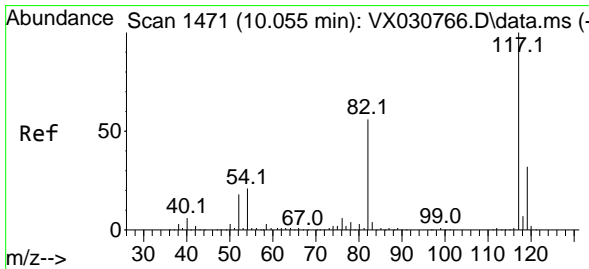
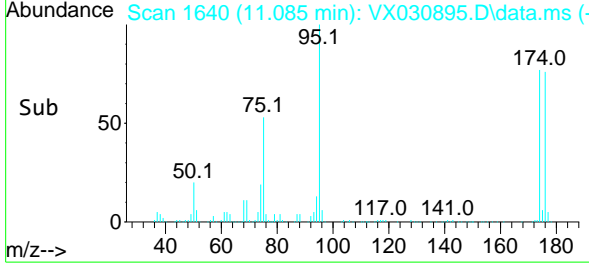
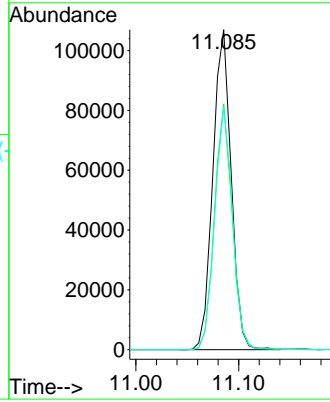


#62
 4-Bromofluorobenzene
 Concen: 49.656 ug/l
 RT: 11.085 min Scan# 1640
 Delta R.T. 0.000 min
 Lab File: VX030895.D
 Acq: 28 Aug 2022 02:04

Instrument : MSVOA_X
 ClientSampleId : FB02-20220823

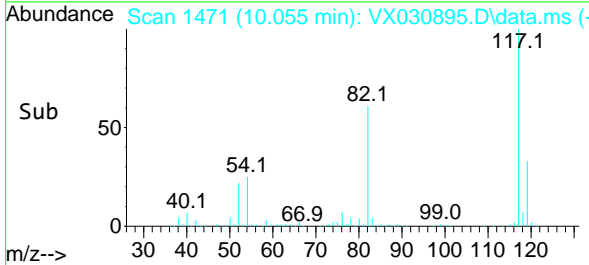
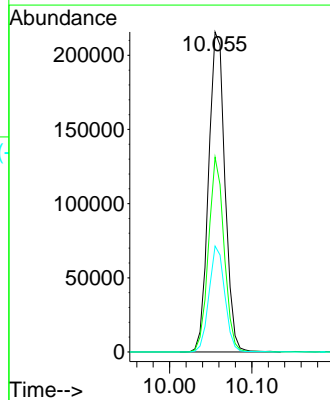
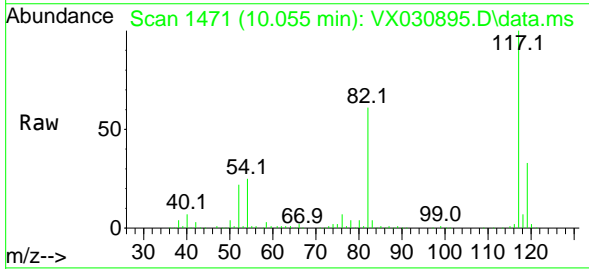


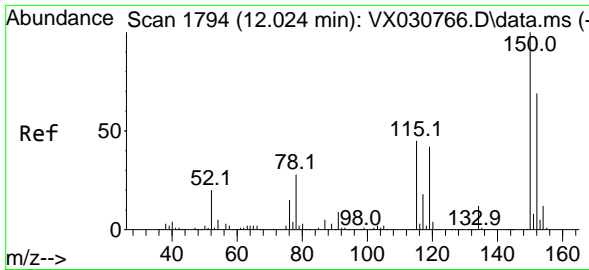
Tgt Ion: 95 Resp: 132184
 Ion Ratio Lower Upper
 95 100
 174 74.8 0.0 149.0
 176 73.5 0.0 146.0



#63
 Chlorobenzene-d5
 Concen: 50.000 ug/l
 RT: 10.055 min Scan# 1471
 Delta R.T. 0.000 min
 Lab File: VX030895.D
 Acq: 28 Aug 2022 02:04

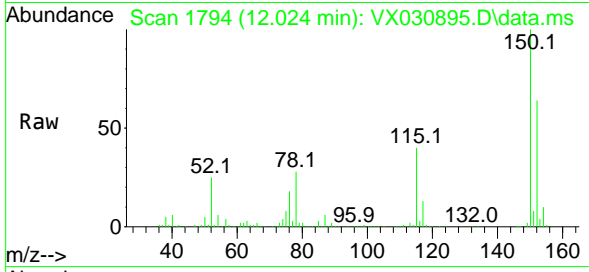
Tgt Ion: 117 Resp: 298189
 Ion Ratio Lower Upper
 117 100
 82 60.8 42.7 64.1
 119 33.1 25.4 38.2



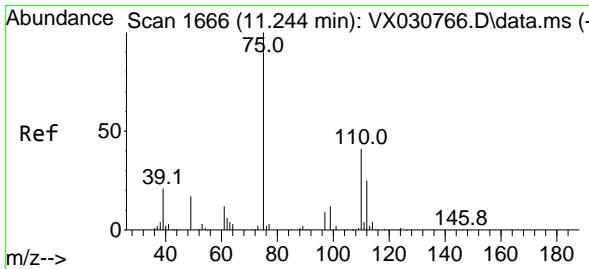
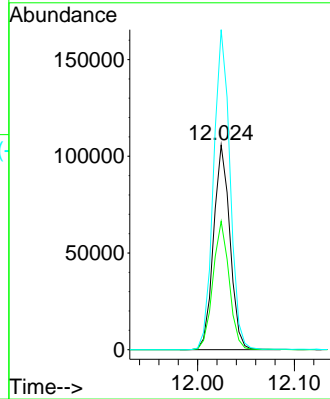
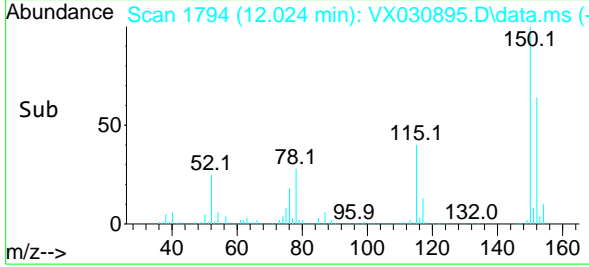


#72
 1,4-Dichlorobenzene-d4
 Concen: 50.000 ug/l
 RT: 12.024 min Scan# 11
 Delta R.T. 0.000 min
 Lab File: VX030895.D
 Acq: 28 Aug 2022 02:04

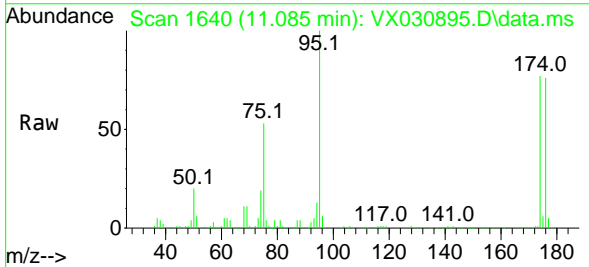
Instrument :
 MSVOA_X
 ClientSampleId :
 FB02-20220823



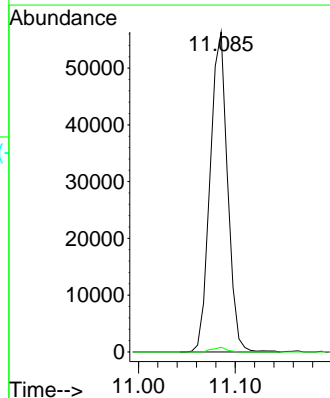
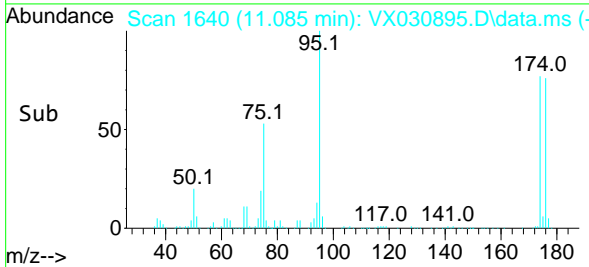
Tgt Ion:152 Resp: 124642
 Ion Ratio Lower Upper
 152 100
 115 61.8 40.5 121.5
 150 156.9 0.0 347.0

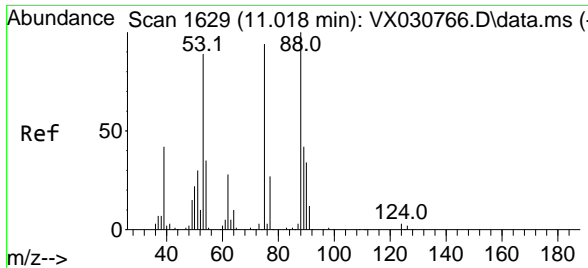


#76
 1,2,3-Trichloropropane
 Concen: 25.800 ug/l
 RT: 11.085 min Scan# 1640
 Delta R.T. -0.159 min
 Lab File: VX030895.D
 Acq: 28 Aug 2022 02:04



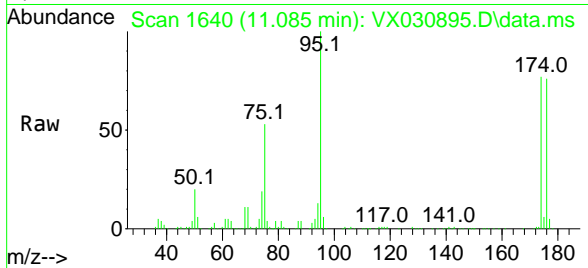
Tgt Ion: 75 Resp: 70453
 Ion Ratio Lower Upper
 75 100
 77 1.2 19.8 59.3#





#81
 trans-1,4-Dichloro-2-butene
 Concen: 83.242 ug/l
 RT: 11.085 min Scan# 10
 Delta R.T. 0.067 min
 Lab File: VX030895.D
 Acq: 28 Aug 2022 02:04

Instrument : MSVOA_X
 ClientSampleId : FB02-20220823



Tgt Ion: 75 Resp: 70453

Ion	Ratio	Lower	Upper
75	100		
53	0.0	74.2	111.4#
89	0.1	34.8	52.2#

