

Data Path : Z:\voasrv\HPCHEM1\MSVOA\_X\Data\VX082725\  
 Data File : VX047536.D  
 Acq On : 27 Aug 2025 13:14  
 Operator : JC/MD  
 Sample : VX0827WBL01  
 Misc : 5.0mL/MSVOA\_X/WATER  
 ALS Vial : 4 Sample Multiplier: 1

Instrument :  
 MSVOA\_X  
 ClientSampleId :

Quant Time: Aug 28 01:18:07 2025  
 Quant Method : Z:\voasrv\HPCHEM1\MSVOA\_X\Method\82X081525W.M  
 Quant Title : SW846 8260  
 QLast Update : Mon Aug 18 04:18:28 2025  
 Response via : Initial Calibration

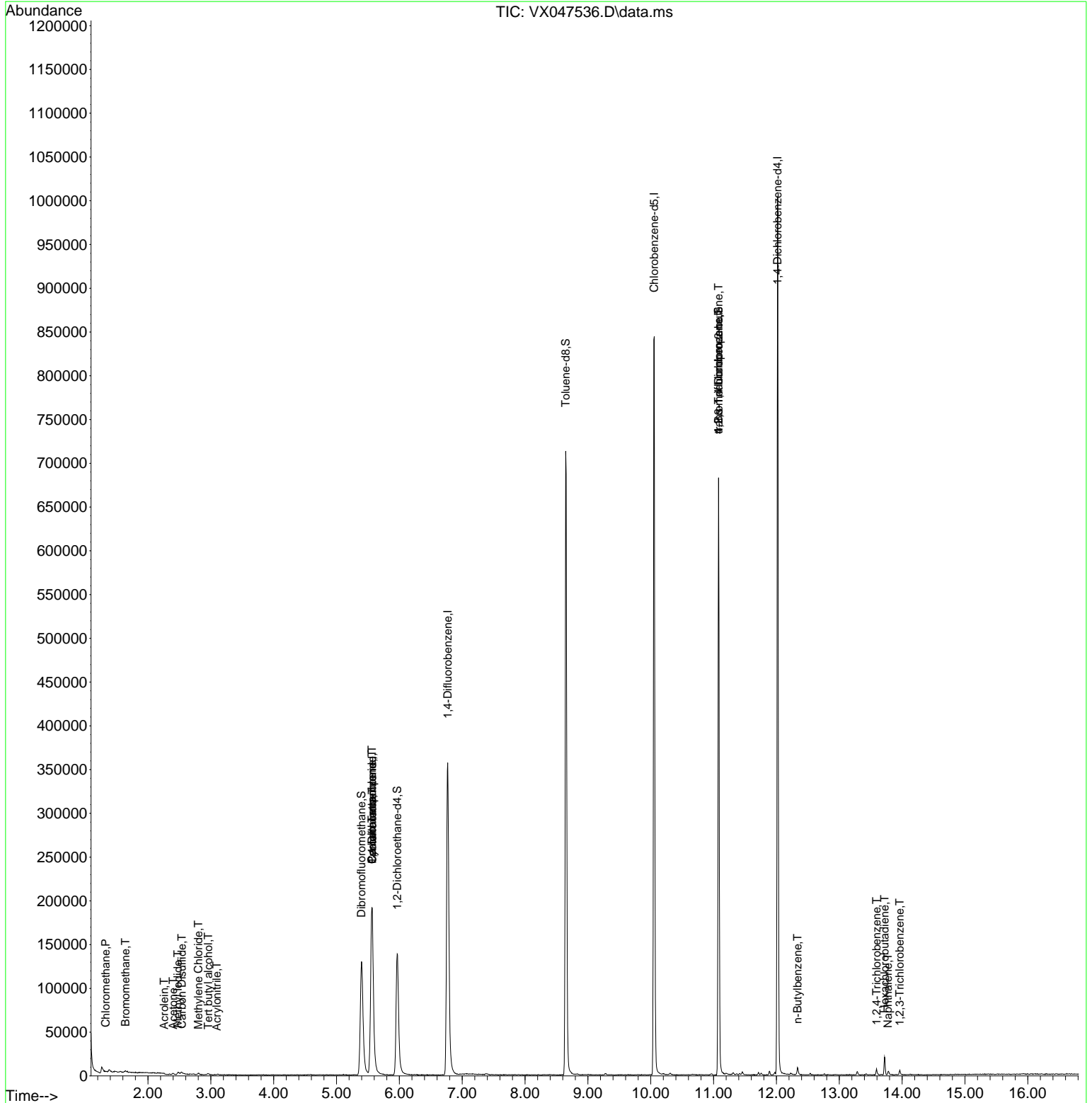
Compound	R.T.	QIon	Response	Conc	Units	Dev(Min)
-----						
Internal Standards						
1) Pentafluorobenzene	5.568	168	194583	50.000	ug/l	0.00
34) 1,4-Difluorobenzene	6.769	114	393301	50.000	ug/l	0.00
63) Chlorobenzene-d5	10.055	117	391930	50.000	ug/l	0.00
72) 1,4-Dichlorobenzene-d4	12.018	152	194932	50.000	ug/l	0.00
System Monitoring Compounds						
33) 1,2-Dichloroethane-d4	5.964	65	146855	53.926	ug/l	0.00
Spiked Amount	50.000	Range 78 - 117	Recovery	=	107.860%	
35) Dibromofluoromethane	5.397	113	123885	48.534	ug/l	0.00
Spiked Amount	50.000	Range 75 - 124	Recovery	=	97.060%	
50) Toluene-d8	8.647	98	433620	47.528	ug/l	0.00
Spiked Amount	50.000	Range 92 - 112	Recovery	=	95.060%	
62) 4-Bromofluorobenzene	11.079	95	182336	54.158	ug/l	0.00
Spiked Amount	50.000	Range 83 - 123	Recovery	=	108.320%	
Target Compounds						
						Qvalue
3) Chloromethane	1.325	50	517	0.232	ug/l #	41
5) Bromomethane	1.642	94	793	0.701	ug/l #	79
10) Methyl Iodide	2.477	142	4204	1.021	ug/l #	86
11) Tert butyl alcohol	2.959	59	136	0.574	ug/l #	72
13) Acrolein	2.258	56	165	0.330	ug/l #	51
15) Acrylonitrile	3.093	53	307	0.268	ug/l #	50
16) Acetone	2.398	43	2032	1.985	ug/l #	55
17) Carbon Disulfide	2.538	76	2615	0.354	ug/l	100
20) Methylene Chloride	2.800	84	868	0.320	ug/l #	92
31) Cyclohexane	5.568	56	4523	1.032	ug/l #	20
36) 1,1-Dichloropropene	5.562	75	16107	3.997	ug/l #	48
38) Carbon Tetrachloride	5.562	117	20551	4.667	ug/l #	15
76) 1,2,3-Trichloropropane	11.079	75	94669	26.479	ug/l #	37
81) trans-1,4-Dichloro-2-b...	11.079	75	94669	104.859	ug/l #	7
89) n-Butylbenzene	12.335	91	3463	0.283	ug/l	98
93) 1,2,4-Trichlorobenzene	13.591	180	2182	0.482	ug/l	78
94) Hexachlorobutadiene	13.719	225	2979	1.848	ug/l	90
95) Naphthalene	13.774	128	3544	0.274	ug/l	97
96) 1,2,3-Trichlorobenzene	13.963	180	1556	0.365	ug/l	98

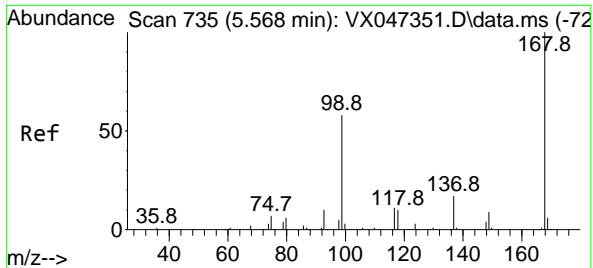
(#) = qualifier out of range (m) = manual integration (+) = signals summed

Data Path : Z:\voasrv\HPCHEM1\MSVOA\_X\Data\VX082725\  
 Data File : VX047536.D  
 Acq On : 27 Aug 2025 13:14  
 Operator : JC/MD  
 Sample : VX0827WBL01  
 Misc : 5.0mL/MSVOA\_X/WATER  
 ALS Vial : 4 Sample Multiplier: 1

Instrument :  
 MSVOA\_X  
 ClientSampleId :

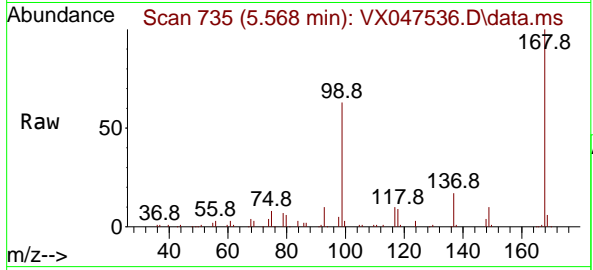
Quant Time: Aug 28 01:18:07 2025  
 Quant Method : Z:\voasrv\HPCHEM1\MSVOA\_X\Method\82X081525W.M  
 Quant Title : SW846 8260  
 QLast Update : Mon Aug 18 04:18:28 2025  
 Response via : Initial Calibration



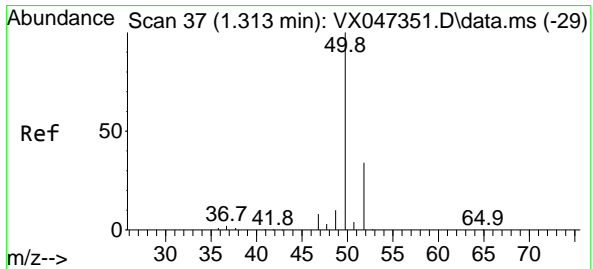
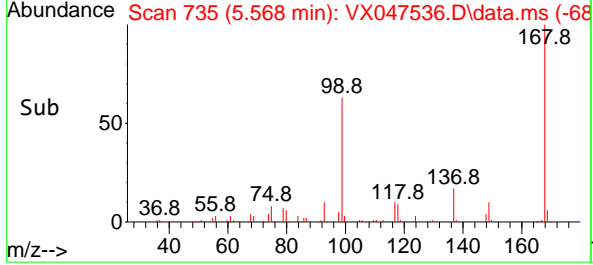
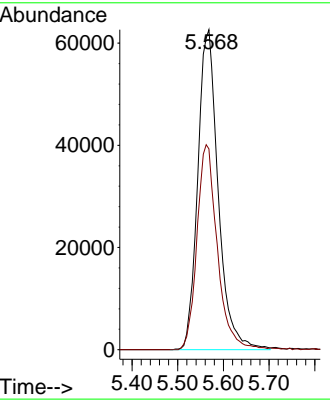


#1  
 Pentafluorobenzene  
 Concen: 50.000 ug/l  
 RT: 5.568 min Scan# 71  
 Delta R.T. 0.000 min  
 Lab File: VX047536.D  
 Acq: 27 Aug 2025 13:14

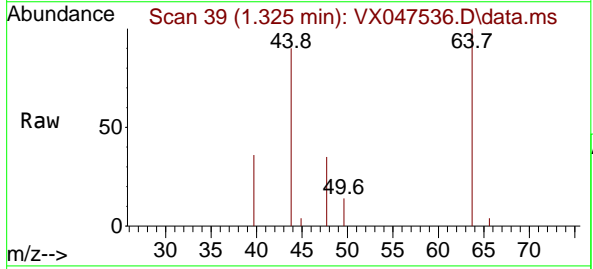
Instrument :  
 MSVOA\_X  
 ClientSampleId :



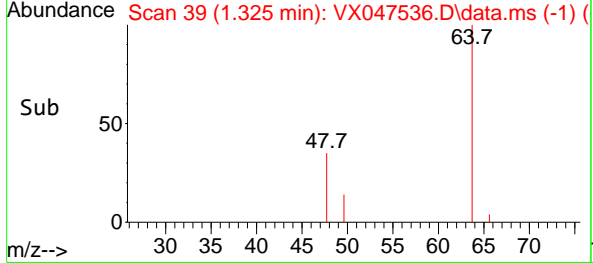
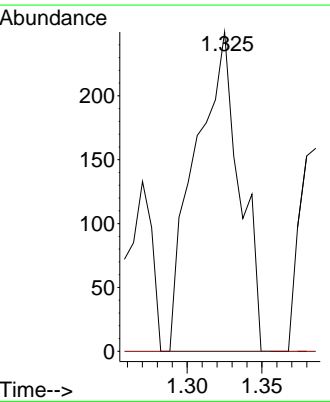
Tgt Ion:168 Resp: 194583  
 Ion Ratio Lower Upper  
 168 100  
 99 62.8 47.9 71.9

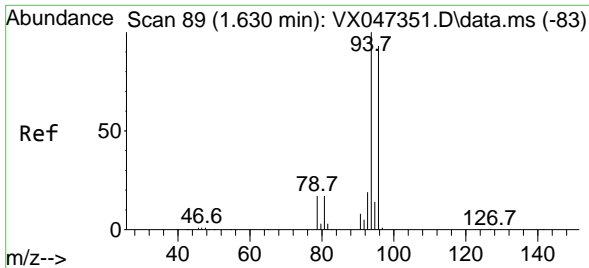


#3  
 Chloromethane  
 Concen: 0.232 ug/l  
 RT: 1.325 min Scan# 39  
 Delta R.T. 0.012 min  
 Lab File: VX047536.D  
 Acq: 27 Aug 2025 13:14



Tgt Ion: 50 Resp: 517  
 Ion Ratio Lower Upper  
 50 100  
 52 0.0 27.0 40.4#

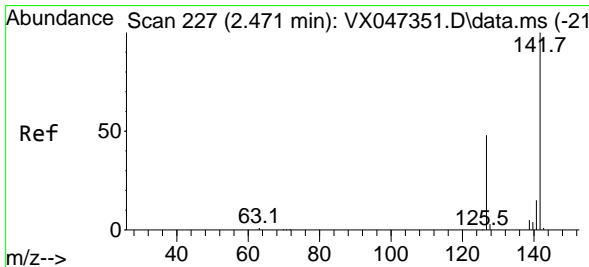
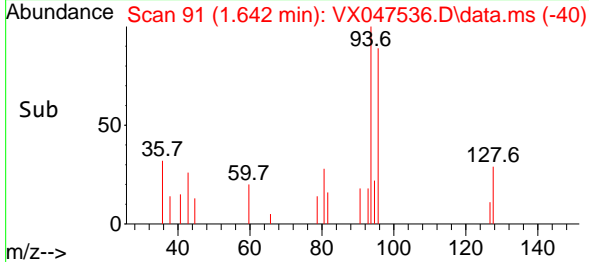
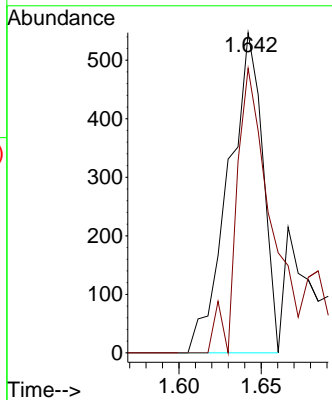
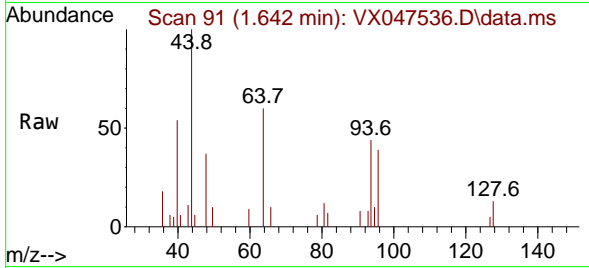




#5  
 Bromomethane  
 Concen: 0.701 ug/l  
 RT: 1.642 min Scan# 91  
 Delta R.T. 0.012 min  
 Lab File: VX047536.D  
 Acq: 27 Aug 2025 13:14

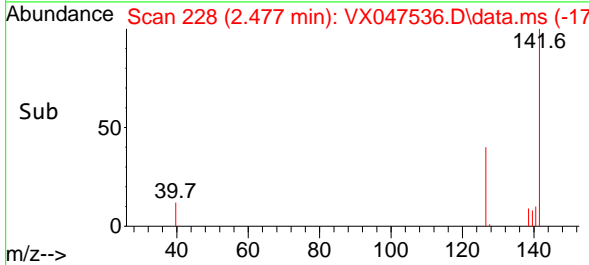
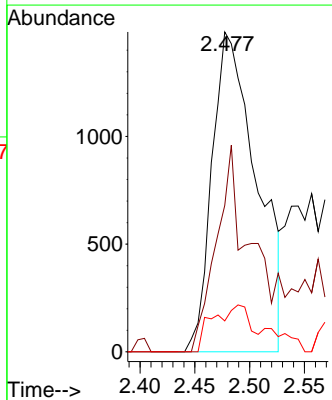
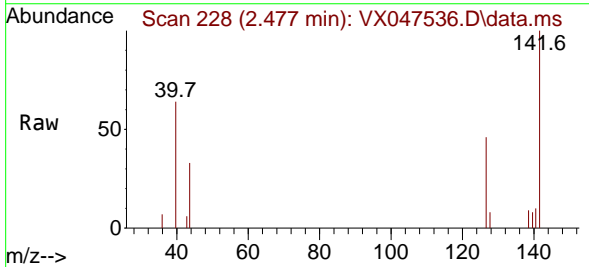
Instrument : MSVOA\_X  
 ClientSampleId :

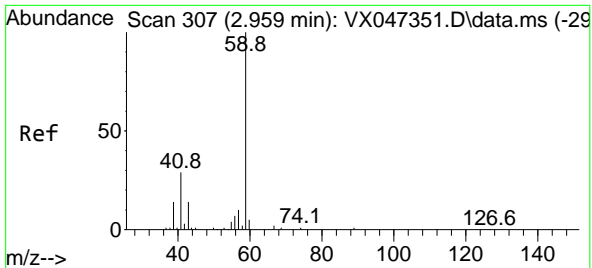
Tgt Ion: 94 Resp: 793  
 Ion Ratio Lower Upper  
 94 100  
 96 72.8 74.7 112.1#



#10  
 Methyl Iodide  
 Concen: 1.021 ug/l  
 RT: 2.477 min Scan# 228  
 Delta R.T. 0.006 min  
 Lab File: VX047536.D  
 Acq: 27 Aug 2025 13:14

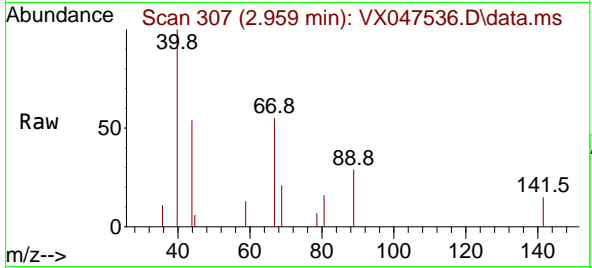
Tgt Ion:142 Resp: 4204  
 Ion Ratio Lower Upper  
 142 100  
 127 34.0 36.1 54.1#  
 141 12.4 11.1 16.7



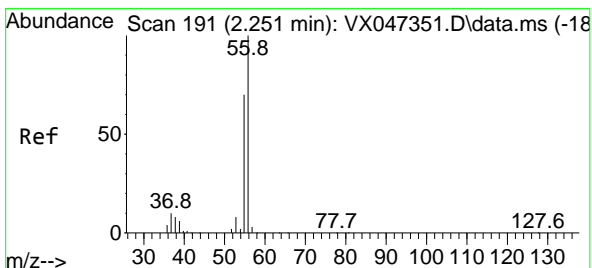
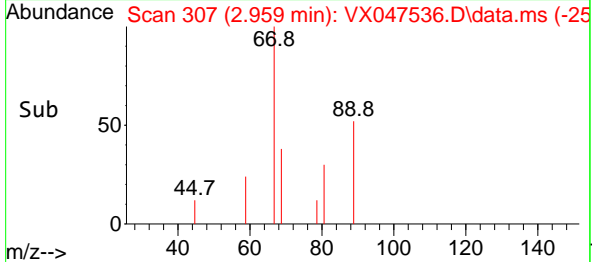
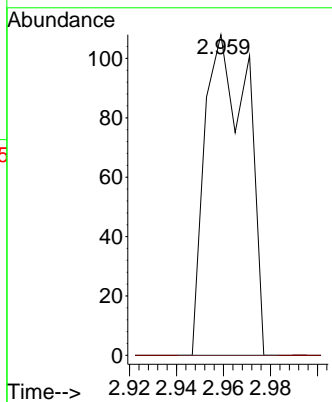


#11  
 Tert butyl alcohol  
 Concen: 0.574 ug/l  
 RT: 2.959 min Scan# 30  
 Delta R.T. 0.000 min  
 Lab File: VX047536.D  
 Acq: 27 Aug 2025 13:14

Instrument :  
 MSVOA\_X  
 ClientSampleId :

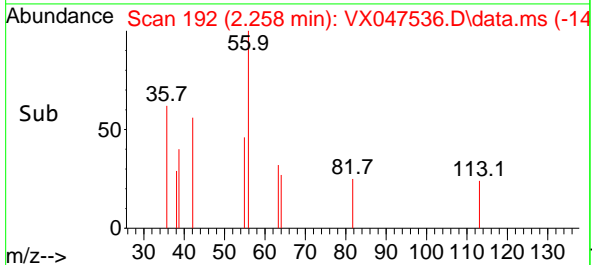
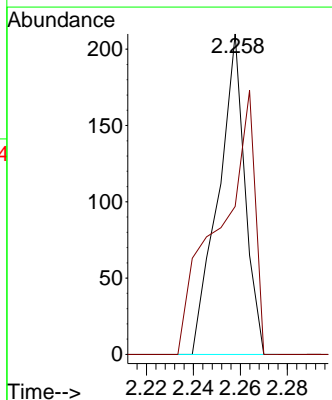
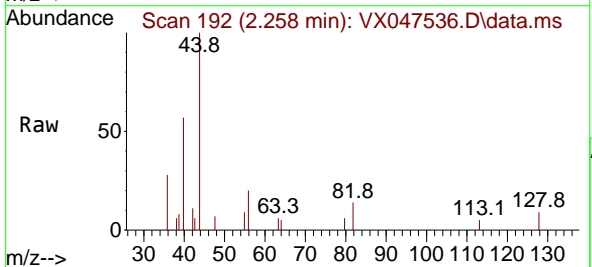


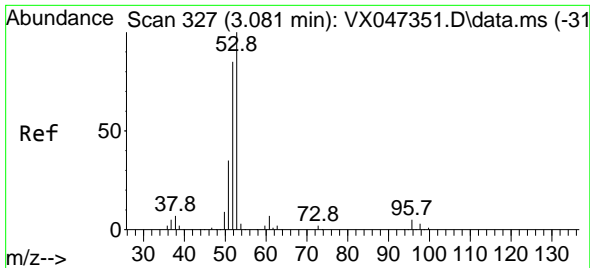
Tgt Ion: 59 Resp: 136  
 Ion Ratio Lower Upper  
 59 100  
 57 0.0 8.3 12.5#



#13  
 Acrolein  
 Concen: 0.330 ug/l  
 RT: 2.258 min Scan# 192  
 Delta R.T. 0.006 min  
 Lab File: VX047536.D  
 Acq: 27 Aug 2025 13:14

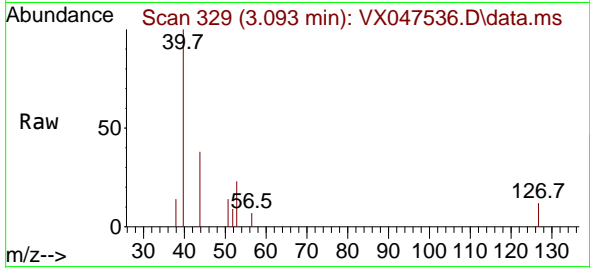
Tgt Ion: 56 Resp: 165  
 Ion Ratio Lower Upper  
 56 100  
 55 109.1 55.5 83.3#





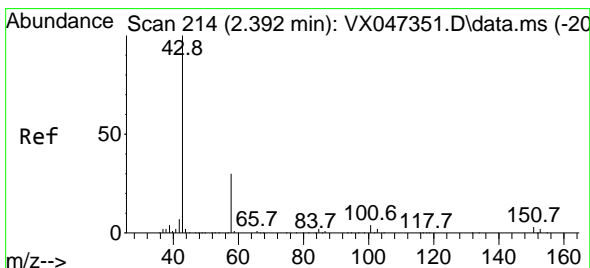
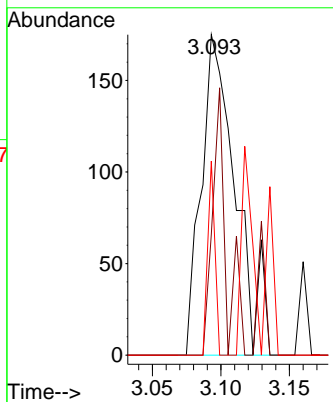
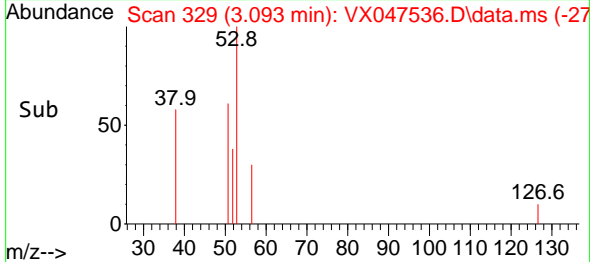
#15  
 Acrylonitrile  
 Concen: 0.268 ug/l  
 RT: 3.093 min Scan# 31  
 Delta R.T. 0.012 min  
 Lab File: VX047536.D  
 Acq: 27 Aug 2025 13:14

Instrument :  
 MSVOA\_X  
 ClientSampleId :

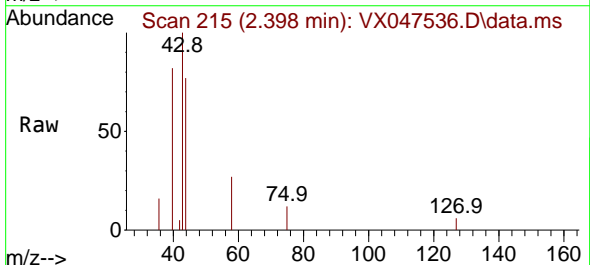


Tgt Ion: 53 Resp: 307

Ion	Ratio	Lower	Upper
53	100		
52	32.9	65.8	98.6#
51	12.7	28.2	42.2#

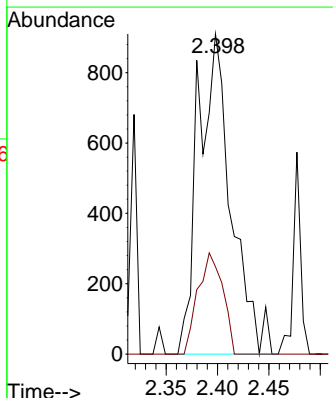
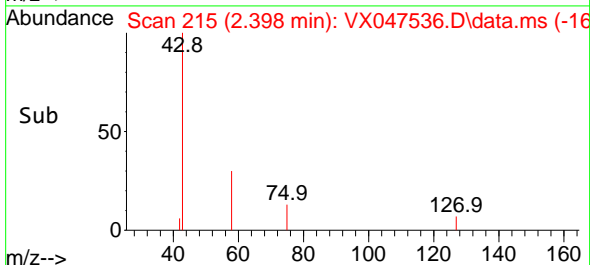


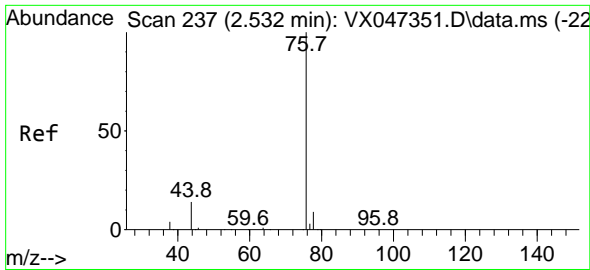
#16  
 Acetone  
 Concen: 1.985 ug/l  
 RT: 2.398 min Scan# 215  
 Delta R.T. 0.006 min  
 Lab File: VX047536.D  
 Acq: 27 Aug 2025 13:14



Tgt Ion: 43 Resp: 2032

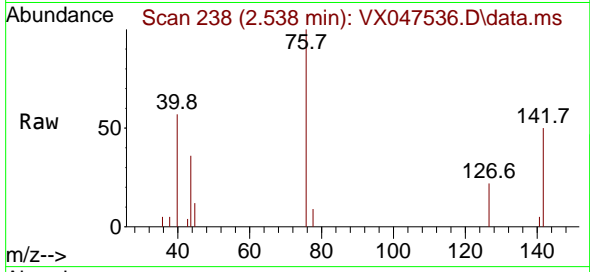
Ion	Ratio	Lower	Upper
43	100		
58	55.7	24.8	37.2#



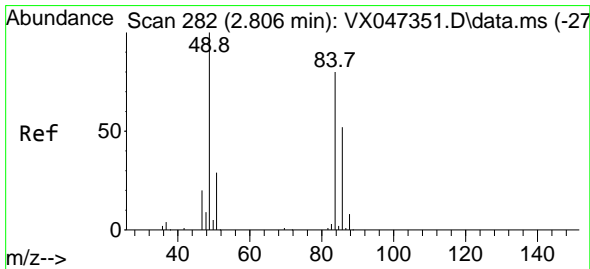
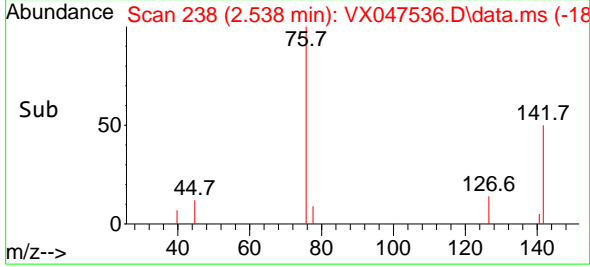
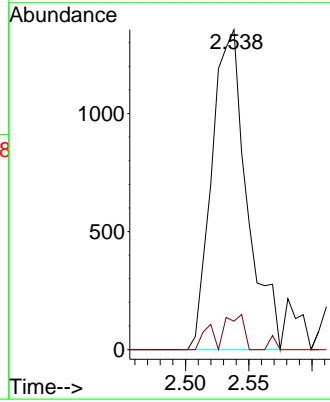


#17  
 Carbon Disulfide  
 Concen: 0.354 ug/l  
 RT: 2.538 min Scan# 21  
 Delta R.T. 0.006 min  
 Lab File: VX047536.D  
 Acq: 27 Aug 2025 13:14

Instrument :  
 MSVOA\_X  
 ClientSampleId :

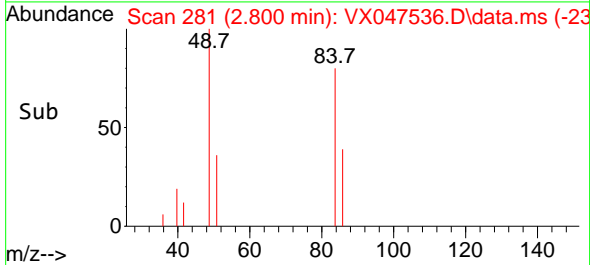
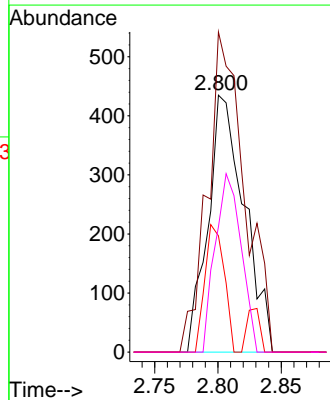
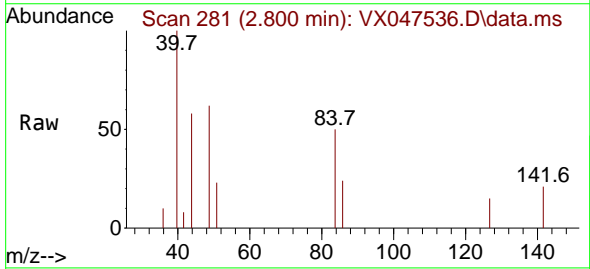


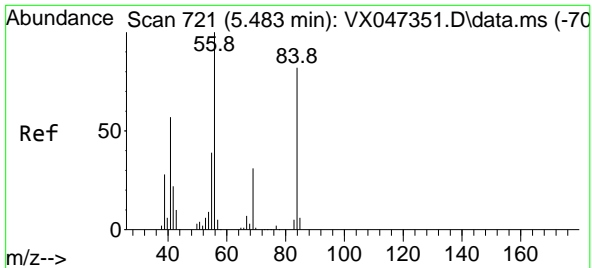
Tgt Ion: 76 Resp: 2615  
 Ion Ratio Lower Upper  
 76 100  
 78 8.9 7.2 10.8



#20  
 Methylene Chloride  
 Concen: 0.320 ug/l  
 RT: 2.800 min Scan# 281  
 Delta R.T. -0.006 min  
 Lab File: VX047536.D  
 Acq: 27 Aug 2025 13:14

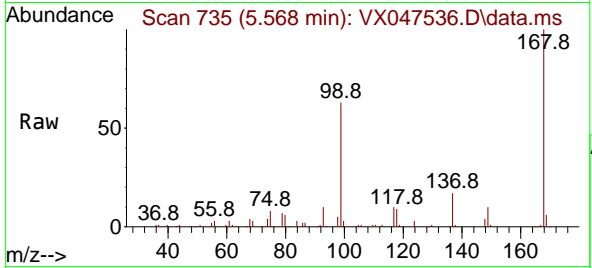
Tgt Ion: 84 Resp: 868  
 Ion Ratio Lower Upper  
 84 100  
 49 124.6 100.1 150.1  
 51 45.3 29.5 44.3#  
 86 48.7 51.8 77.8#



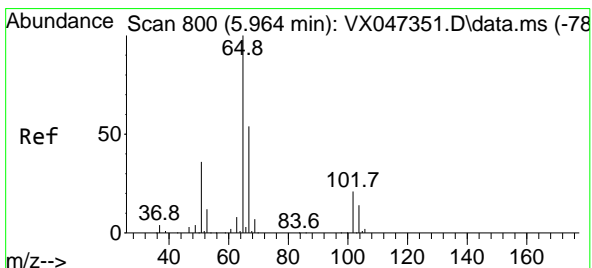
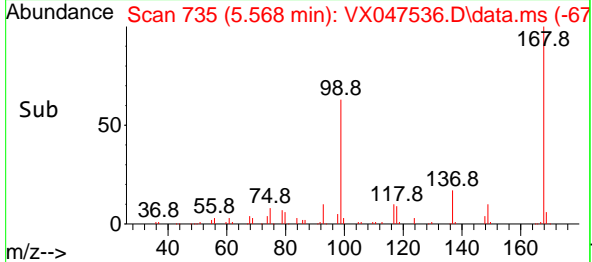
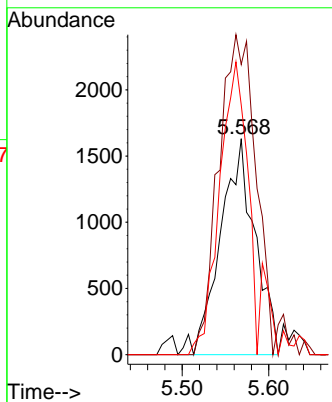


#31  
 Cyclohexane  
 Concen: 1.032 ug/l  
 RT: 5.568 min Scan# 71  
 Delta R.T. 0.086 min  
 Lab File: VX047536.D  
 Acq: 27 Aug 2025 13:14

Instrument :  
 MSVOA\_X  
 ClientSampleId :

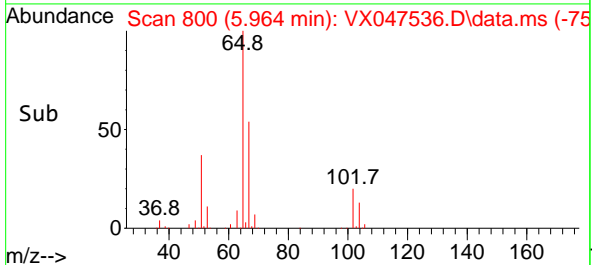
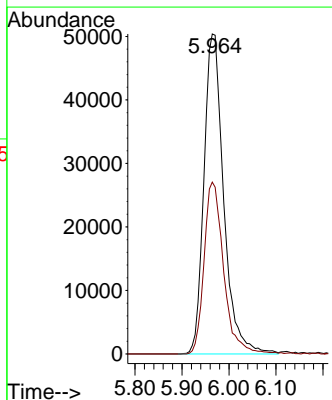
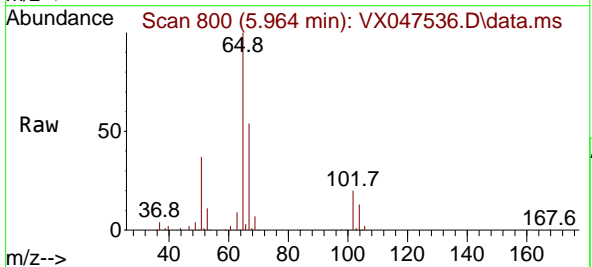


Tgt Ion: 56 Resp: 4523  
 Ion Ratio Lower Upper  
 56 100  
 69 134.4 24.3 36.5#  
 84 115.7 65.3 97.9#

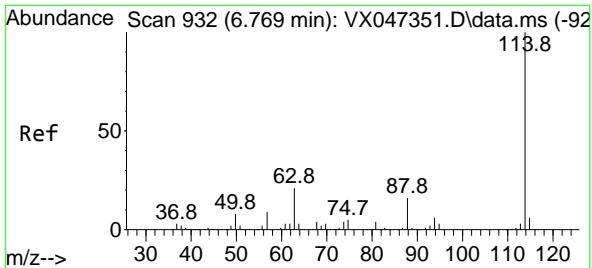


#33  
 1,2-Dichloroethane-d4  
 Concen: 53.926 ug/l  
 RT: 5.964 min Scan# 800  
 Delta R.T. 0.000 min  
 Lab File: VX047536.D  
 Acq: 27 Aug 2025 13:14

Tgt Ion: 65 Resp: 146855  
 Ion Ratio Lower Upper  
 65 100  
 67 53.2 0.0 106.0





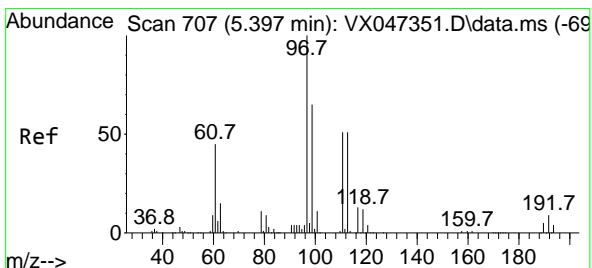
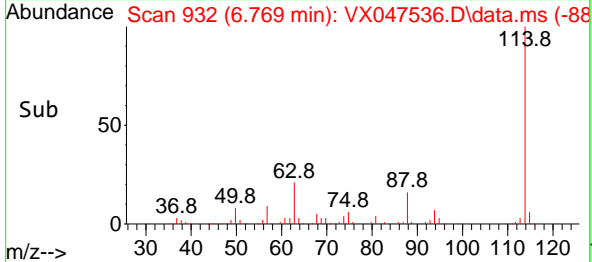
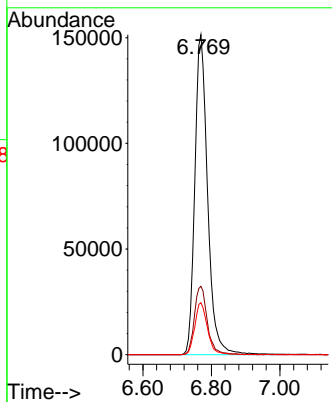
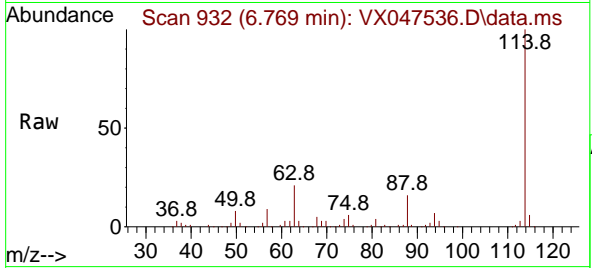


#34  
 1,4-Difluorobenzene  
 Concen: 50.000 ug/l  
 RT: 6.769 min Scan# 91  
 Delta R.T. 0.000 min  
 Lab File: VX047536.D  
 Acq: 27 Aug 2025 13:14

Instrument :  
 MSVOA\_X  
 ClientSampleId :

Tgt Ion:114 Resp: 393301

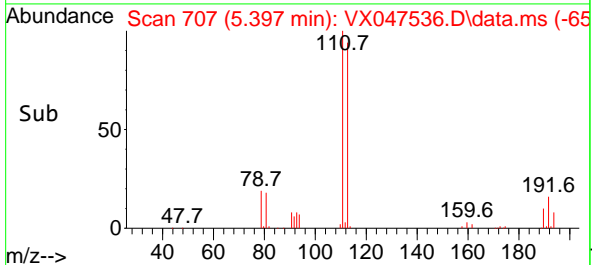
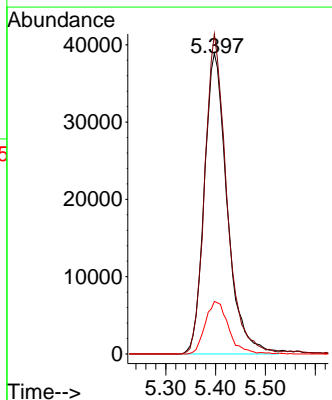
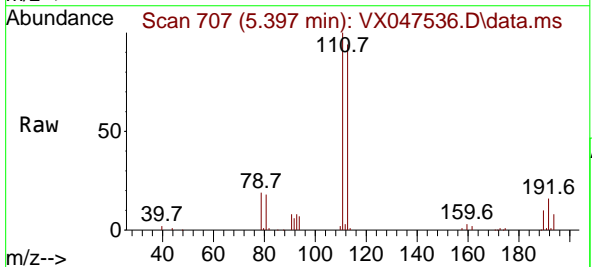
Ion	Ratio	Lower	Upper
114	100		
63	21.3	0.0	42.4
88	16.3	0.0	33.0

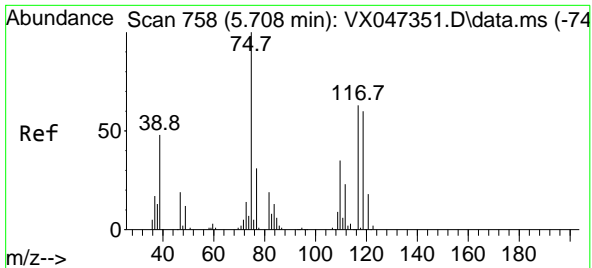


#35  
 Dibromofluoromethane  
 Concen: 48.534 ug/l  
 RT: 5.397 min Scan# 707  
 Delta R.T. 0.000 min  
 Lab File: VX047536.D  
 Acq: 27 Aug 2025 13:14

Tgt Ion:113 Resp: 123885

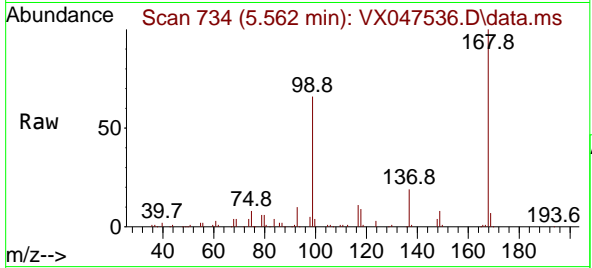
Ion	Ratio	Lower	Upper
113	100		
111	102.3	81.4	122.2
192	17.8	14.1	21.1



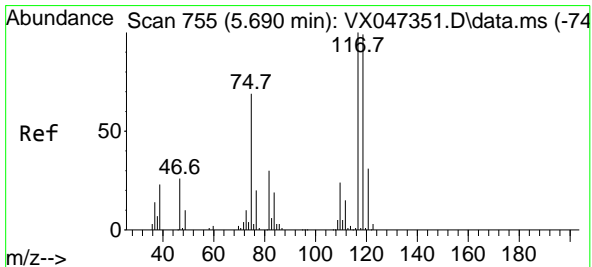
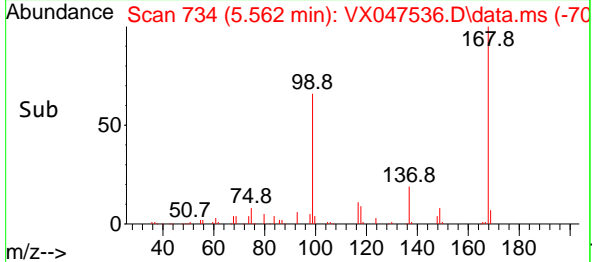
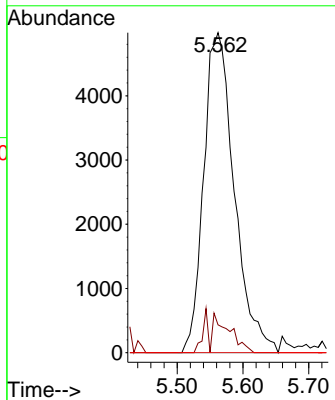


#36  
 1,1-Dichloropropene  
 Concen: 3.997 ug/l  
 RT: 5.562 min Scan# 734  
 Delta R.T. -0.146 min  
 Lab File: VX047536.D  
 Acq: 27 Aug 2025 13:14

Instrument :  
 MSVOA\_X  
 ClientSampleId :

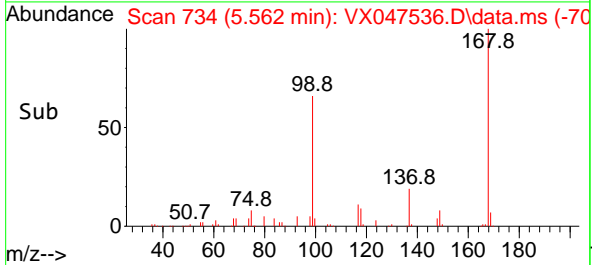
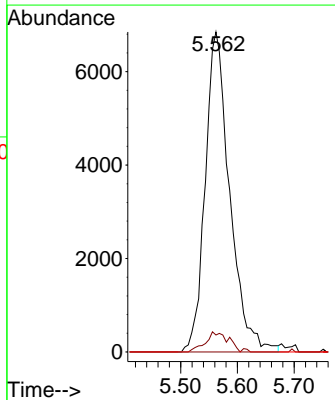
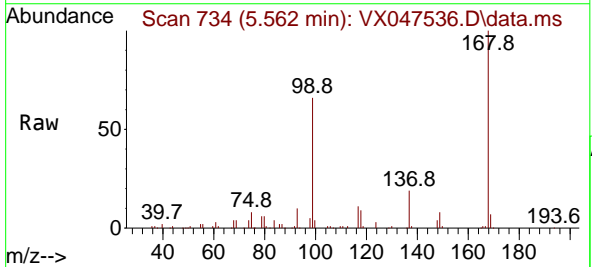


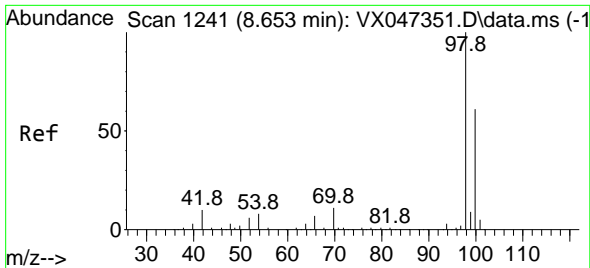
Tgt Ion: 75 Resp: 16107  
 Ion Ratio Lower Upper  
 75 100  
 110 6.8 17.4 52.2#  
 77 0.0 24.4 36.6#



#38  
 Carbon Tetrachloride  
 Concen: 4.667 ug/l  
 RT: 5.562 min Scan# 734  
 Delta R.T. -0.128 min  
 Lab File: VX047536.D  
 Acq: 27 Aug 2025 13:14

Tgt Ion: 117 Resp: 20551  
 Ion Ratio Lower Upper  
 117 100  
 119 5.3 78.5 117.7#  
 121 0.0 24.7 37.1#

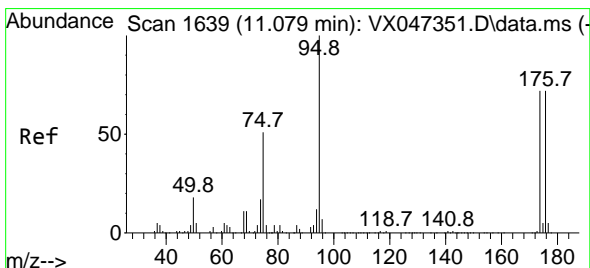
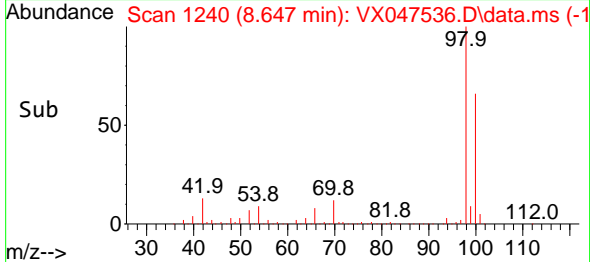
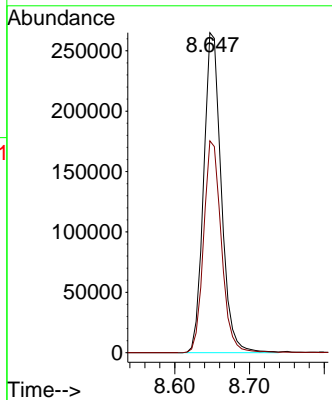
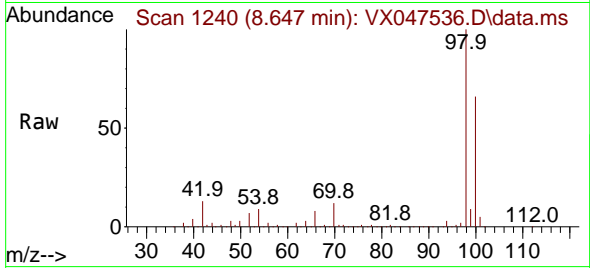




#50  
 Toluene-d8  
 Concen: 47.528 ug/l  
 RT: 8.647 min Scan# 11  
 Delta R.T. -0.006 min  
 Lab File: VX047536.D  
 Acq: 27 Aug 2025 13:14

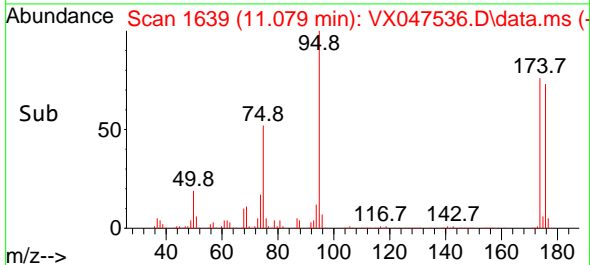
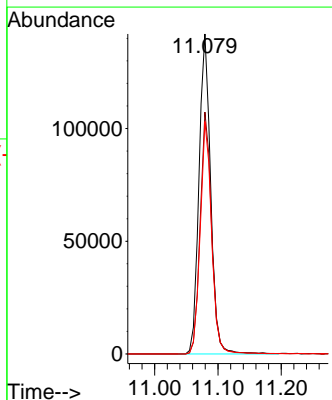
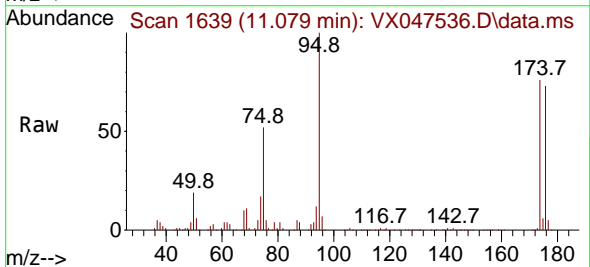
Instrument :  
 MSVOA\_X  
 ClientSampleId :

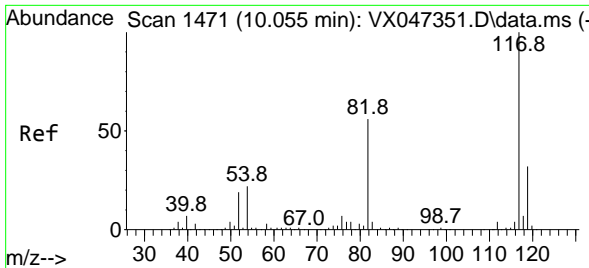
Tgt Ion: 98 Resp: 433620  
 Ion Ratio Lower Upper  
 98 100  
 100 66.5 53.9 80.9



#62  
 4-Bromofluorobenzene  
 Concen: 54.158 ug/l  
 RT: 11.079 min Scan# 1639  
 Delta R.T. 0.000 min  
 Lab File: VX047536.D  
 Acq: 27 Aug 2025 13:14

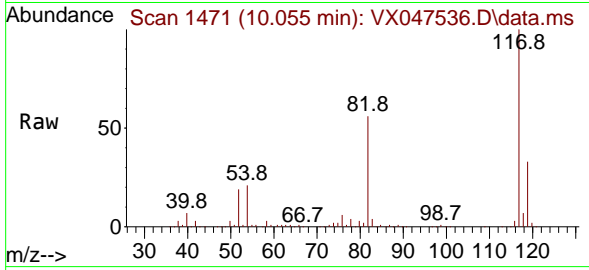
Tgt Ion: 95 Resp: 182336  
 Ion Ratio Lower Upper  
 95 100  
 174 74.6 0.0 148.0  
 176 71.2 0.0 145.4



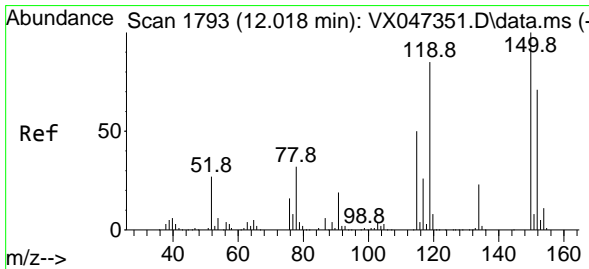
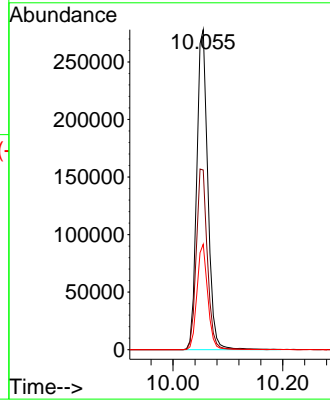
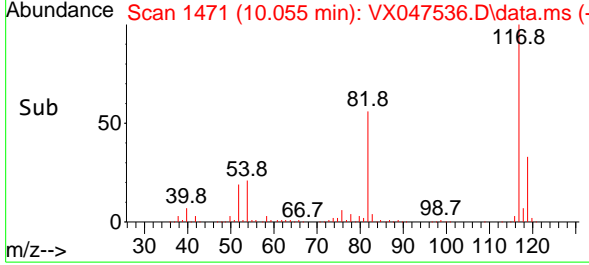


#63  
 Chlorobenzene-d5  
 Concen: 50.000 ug/l  
 RT: 10.055 min Scan# 1471  
 Delta R.T. 0.000 min  
 Lab File: VX047536.D  
 Acq: 27 Aug 2025 13:14

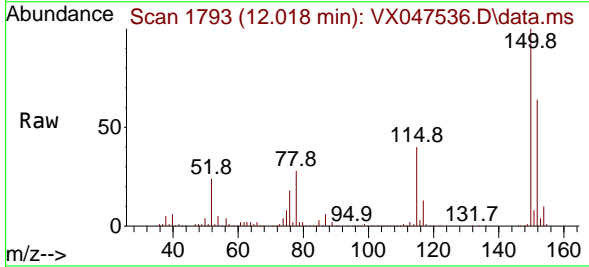
Instrument :  
 MSVOA\_X  
 ClientSampleId :



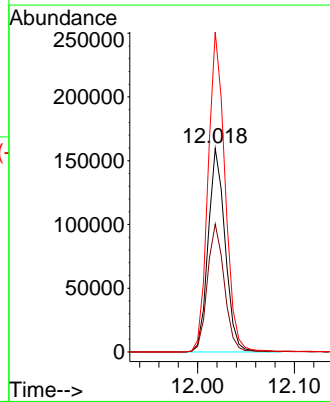
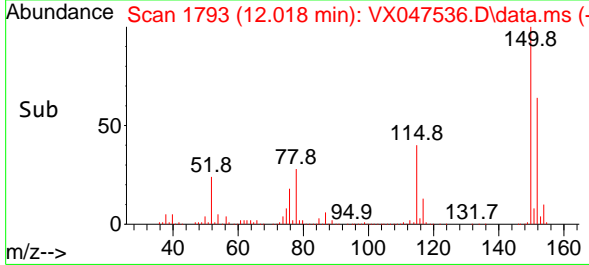
Tgt Ion:117 Resp: 391930  
 Ion Ratio Lower Upper  
 117 100  
 82 56.1 45.0 67.4  
 119 33.0 25.8 38.8

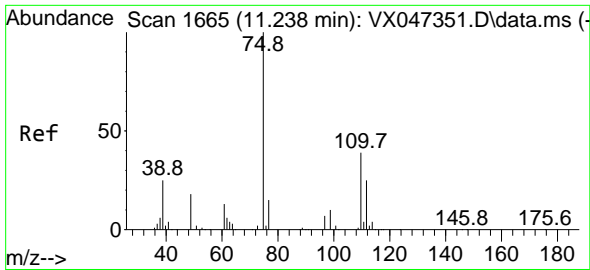


#72  
 1,4-Dichlorobenzene-d4  
 Concen: 50.000 ug/l  
 RT: 12.018 min Scan# 1793  
 Delta R.T. 0.000 min  
 Lab File: VX047536.D  
 Acq: 27 Aug 2025 13:14



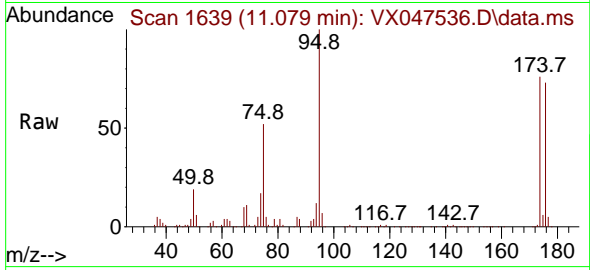
Tgt Ion:152 Resp: 194932  
 Ion Ratio Lower Upper  
 152 100  
 115 63.2 44.6 133.8  
 150 157.6 0.0 349.8



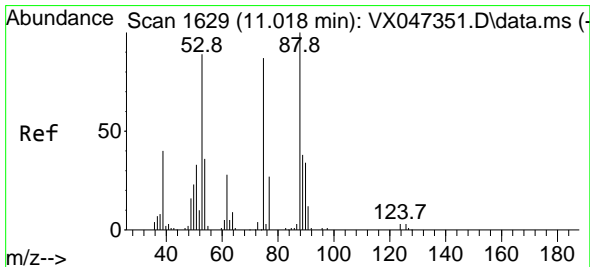
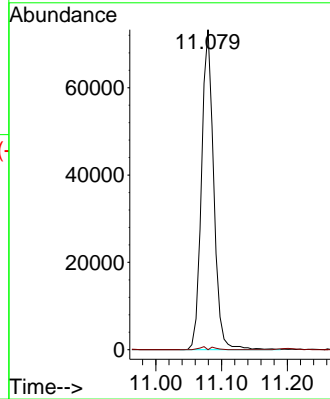
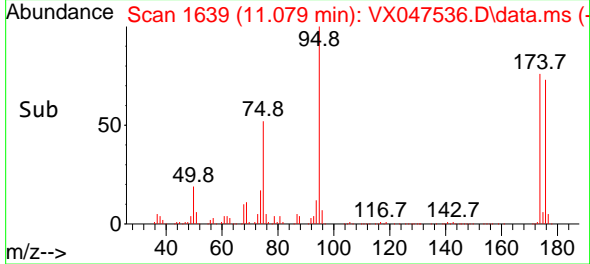


#76  
 1,2,3-Trichloropropane  
 Concen: 26.479 ug/l  
 RT: 11.079 min Scan# 1639  
 Delta R.T. -0.158 min  
 Lab File: VX047536.D  
 Acq: 27 Aug 2025 13:14

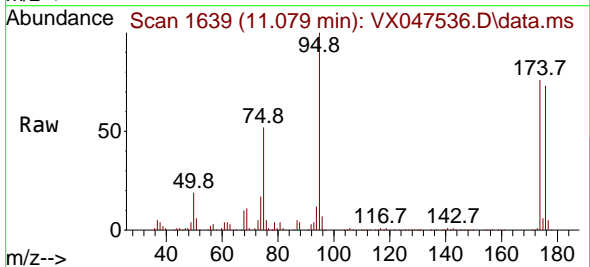
Instrument : MSVOA\_X  
 ClientSampleId :



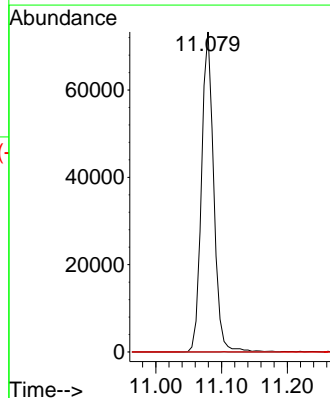
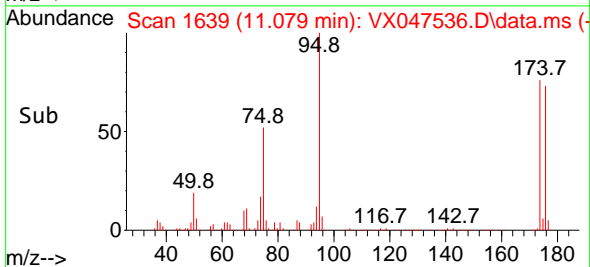
Tgt Ion: 75 Resp: 94669  
 Ion Ratio Lower Upper  
 75 100  
 77 0.5 19.4 58.2#

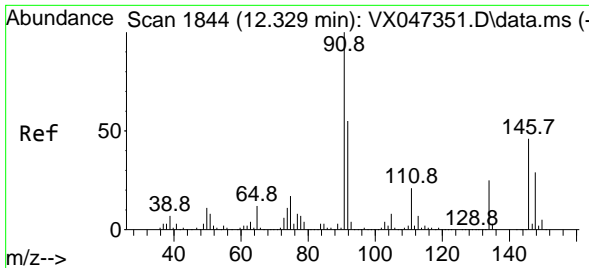


#81  
 trans-1,4-Dichloro-2-butene  
 Concen: 104.859 ug/l  
 RT: 11.079 min Scan# 1639  
 Delta R.T. 0.061 min  
 Lab File: VX047536.D  
 Acq: 27 Aug 2025 13:14



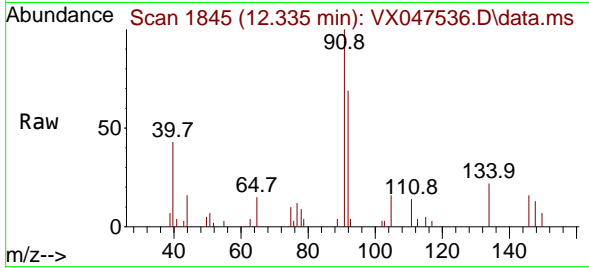
Tgt Ion: 75 Resp: 94669  
 Ion Ratio Lower Upper  
 75 100  
 53 0.0 85.2 127.8#  
 89 0.0 36.7 55.1#





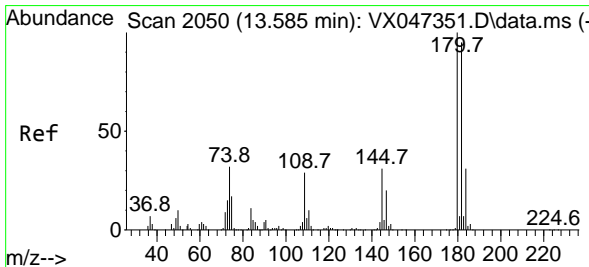
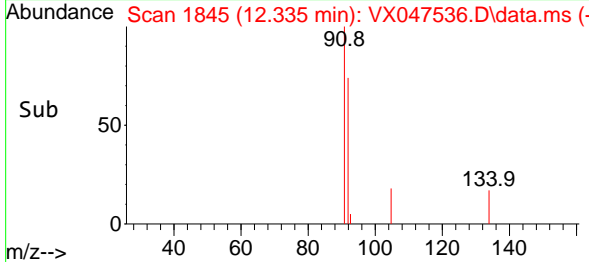
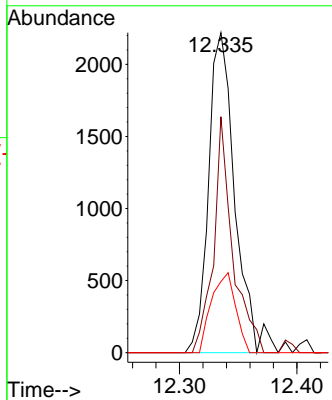
#89  
 n-Butylbenzene  
 Concen: 0.283 ug/l  
 RT: 12.335 min Scan# 1845  
 Delta R.T. 0.006 min  
 Lab File: VX047536.D  
 Acq: 27 Aug 2025 13:14

Instrument : MSVOA\_X  
 ClientSampleId :

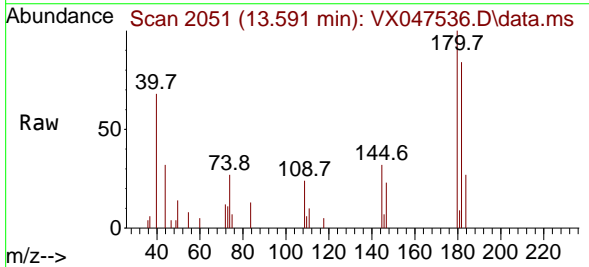


Tgt Ion: 91 Resp: 3463

Ion	Ratio	Lower	Upper
91	100		
92	53.3	27.2	81.5
134	22.9	12.6	37.8

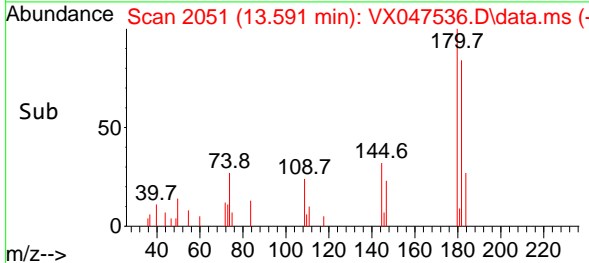
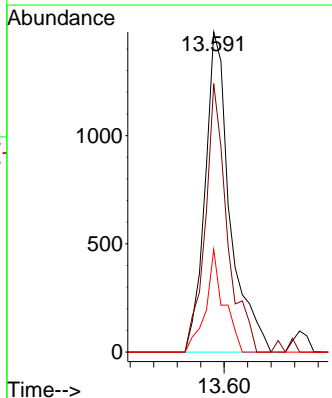


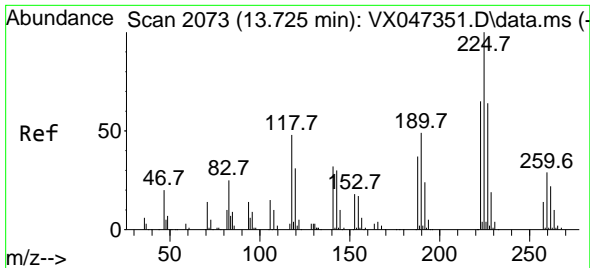
#93  
 1,2,4-Trichlorobenzene  
 Concen: 0.482 ug/l  
 RT: 13.591 min Scan# 2051  
 Delta R.T. 0.006 min  
 Lab File: VX047536.D  
 Acq: 27 Aug 2025 13:14



Tgt Ion: 180 Resp: 2182

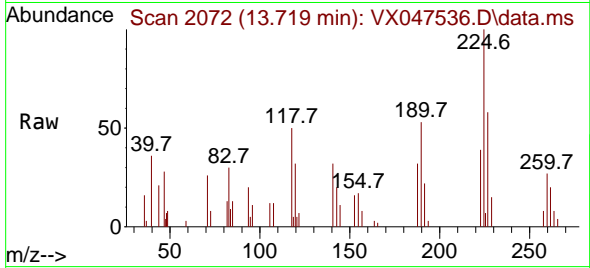
Ion	Ratio	Lower	Upper
180	100		
182	73.2	48.1	144.4
145	23.1	16.2	48.5



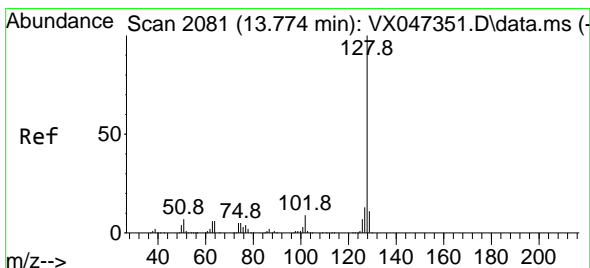
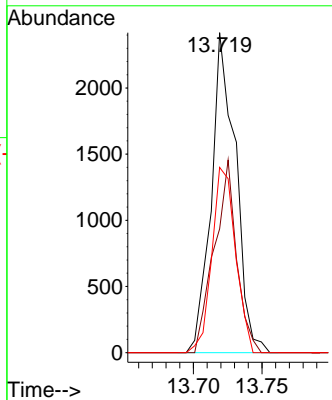
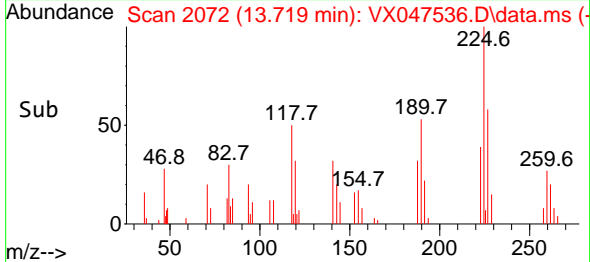


#94  
 Hexachlorobutadiene  
 Concen: 1.848 ug/l  
 RT: 13.719 min Scan# 2072  
 Delta R.T. -0.006 min  
 Lab File: VX047536.D  
 Acq: 27 Aug 2025 13:14

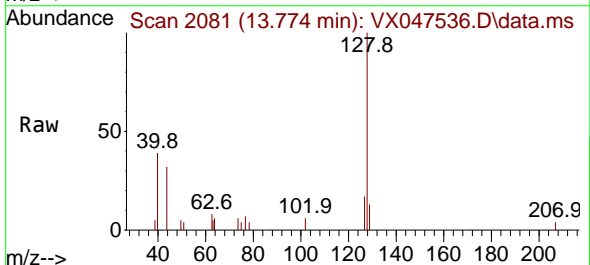
Instrument : MSVOA\_X  
 ClientSampleId :



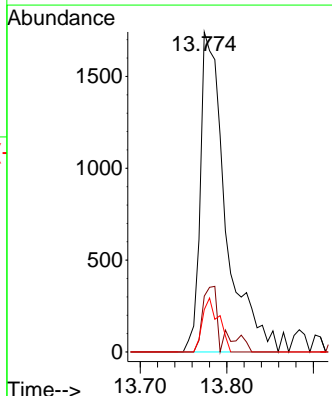
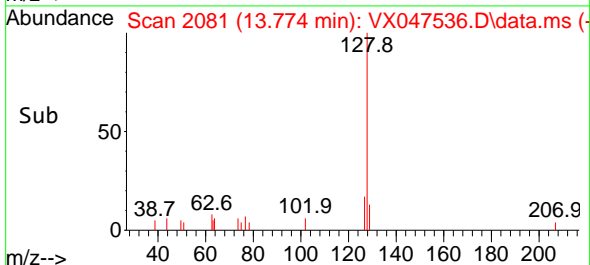
Tgt Ion:225 Resp: 2979  
 Ion Ratio Lower Upper  
 225 100  
 223 55.3 32.2 96.6  
 227 56.2 31.6 95.0

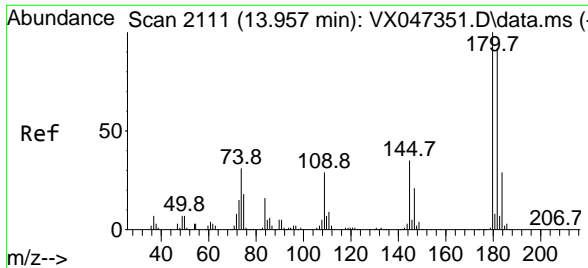


#95  
 Naphthalene  
 Concen: 0.274 ug/l  
 RT: 13.774 min Scan# 2081  
 Delta R.T. 0.000 min  
 Lab File: VX047536.D  
 Acq: 27 Aug 2025 13:14



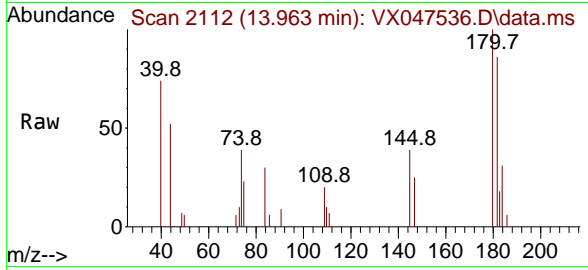
Tgt Ion:128 Resp: 3544  
 Ion Ratio Lower Upper  
 128 100  
 127 15.1 10.1 15.1  
 129 10.9 8.7 13.1





#96  
 1,2,3-Trichlorobenzene  
 Concen: 0.365 ug/l  
 RT: 13.963 min Scan# 21  
 Delta R.T. 0.006 min  
 Lab File: VX047536.D  
 Acq: 27 Aug 2025 13:14

Instrument :  
 MSVOA\_X  
 ClientSampleId :



Tgt Ion:180 Resp: 1556

Ion	Ratio	Lower	Upper
180	100		
182	97.6	48.0	144.2
145	36.0	17.4	52.2

