

Data Path : Z:\voasrv\HPCHEM1\MSVOA\_X\Data\VX082725\  
 Data File : VX047539.D  
 Acq On : 27 Aug 2025 14:44  
 Operator : JC/MD  
 Sample : Q2964-02DL 5X  
 Misc : 5.0mL/MSVOA\_X/WATER  
 ALS Vial : 7 Sample Multiplier: 1

Instrument :  
 MSVOA\_X  
 ClientSampleId :

Quant Time: Aug 28 01:20:31 2025  
 Quant Method : Z:\voasrv\HPCHEM1\MSVOA\_X\Method\82X081525W.M  
 Quant Title : SW846 8260  
 QLast Update : Mon Aug 18 04:18:28 2025  
 Response via : Initial Calibration

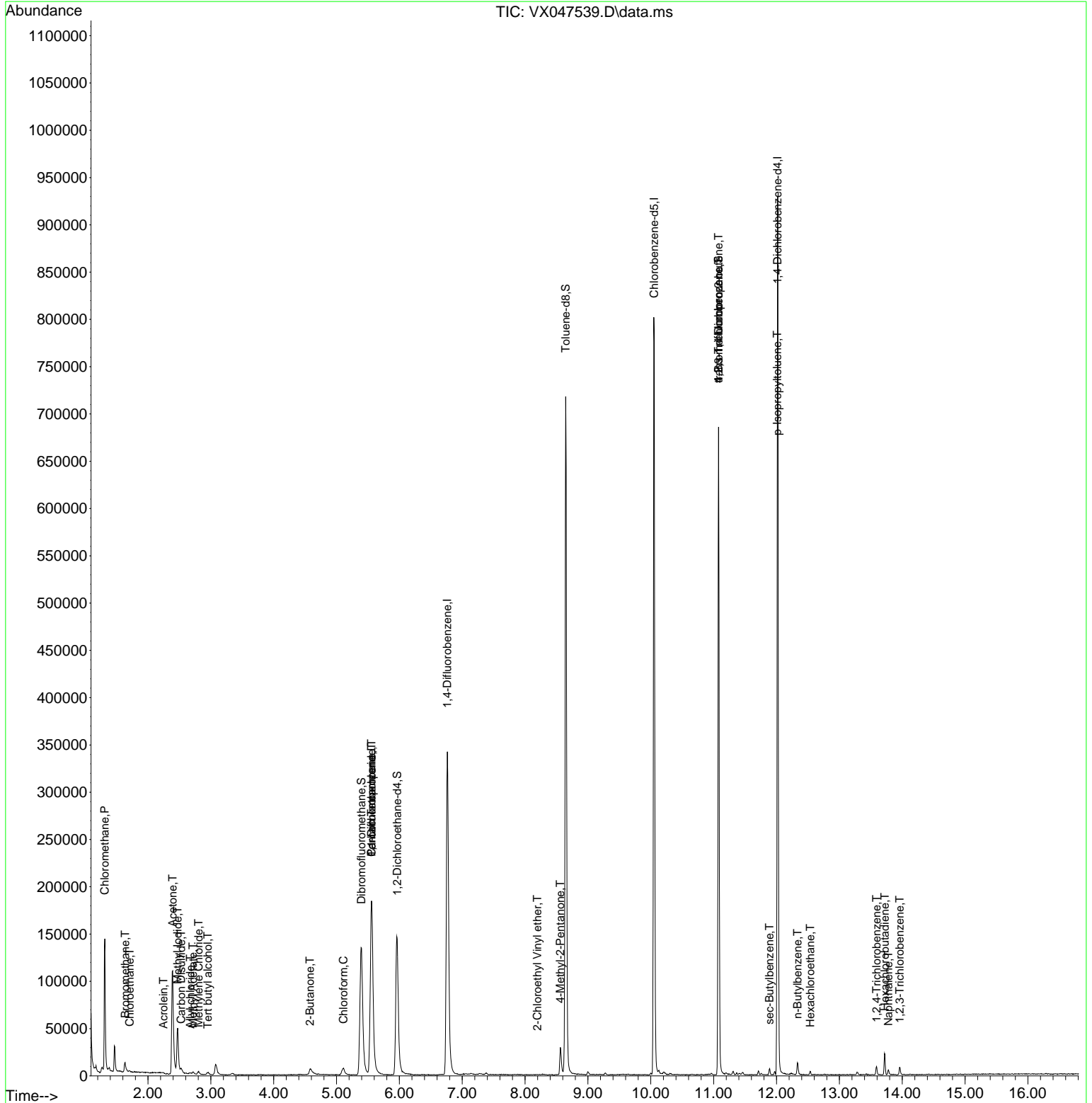
Compound	R.T.	QIon	Response	Conc Units	Dev(Min)
-----					
Internal Standards					
1) Pentafluorobenzene	5.556	168	187177	50.000 ug/l	-0.01
34) 1,4-Difluorobenzene	6.763	114	371185	50.000 ug/l	0.00
63) Chlorobenzene-d5	10.055	117	366426	50.000 ug/l	0.00
72) 1,4-Dichlorobenzene-d4	12.018	152	181024	50.000 ug/l	0.00
System Monitoring Compounds					
33) 1,2-Dichloroethane-d4	5.964	65	155823	59.483 ug/l	0.00
Spiked Amount	50.000	Range 78 - 117	Recovery	= 118.960%#	
35) Dibromofluoromethane	5.397	113	130586	54.207 ug/l	0.00
Spiked Amount	50.000	Range 75 - 124	Recovery	= 108.420%	
50) Toluene-d8	8.647	98	436410	50.683 ug/l	0.00
Spiked Amount	50.000	Range 92 - 112	Recovery	= 101.360%	
62) 4-Bromofluorobenzene	11.079	95	184372	58.025 ug/l	0.00
Spiked Amount	50.000	Range 83 - 123	Recovery	= 116.060%	
Target Compounds					
					Qvalue
3) Chloromethane	1.313	50	106172	49.463 ug/l	95
5) Bromomethane	1.636	94	5551	5.101 ug/l	98
6) Chloroethane	1.709	64	1570	0.952 ug/l #	81
10) Methyl Iodide	2.471	142	50749	12.810 ug/l	94
11) Tert butyl alcohol	2.953	59	932	4.090 ug/l #	82
13) Acrolein	2.245	56	161	0.335 ug/l #	1
14) Allyl chloride	2.672	41	1093	0.267 ug/l #	62
16) Acetone	2.392	43	147811	150.114 ug/l	100
17) Carbon Disulfide	2.526	76	5234	0.736 ug/l	98
18) Methyl Acetate	2.715	43	3176	1.245 ug/l #	85
20) Methylene Chloride	2.806	84	1374	0.527 ug/l #	84
25) 2-Butanone	4.574	43	14672	11.377 ug/l	92
30) Chloroform	5.111	83	9325	1.998 ug/l	86
36) 1,1-Dichloropropene	5.556	75	15472	4.069 ug/l #	51
38) Carbon Tetrachloride	5.556	117	20449	4.921 ug/l #	14
51) 4-Methyl-2-Pentanone	8.561	43	32875	10.073 ug/l #	36
58) 2-Chloroethyl Vinyl ether	8.196	63	359	8.540 ug/l #	46
76) 1,2,3-Trichloropropane	11.079	75	94772	28.544 ug/l #	39
81) trans-1,4-Dichloro-2-b...	11.079	75	94772	112.424 ug/l #	7
85) sec-Butylbenzene	11.890	105	3691	0.256 ug/l	100
86) p-Isopropyltoluene	12.012	119	2854	0.234 ug/l #	73
89) n-Butylbenzene	12.335	91	4939	0.435 ug/l	95
90) Hexachloroethane	12.536	117	545	0.255 ug/l	82
93) 1,2,4-Trichlorobenzene	13.591	180	2534	0.603 ug/l	97
94) Hexachlorobutadiene	13.725	225	2887	1.929 ug/l	98
95) Naphthalene	13.780	128	4600	0.383 ug/l #	92
96) 1,2,3-Trichlorobenzene	13.963	180	2425	0.612 ug/l	96

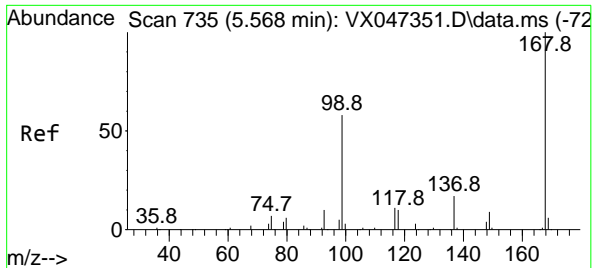
(#) = qualifier out of range (m) = manual integration (+) = signals summed

Data Path : Z:\voasrv\HPCHEM1\MSVOA\_X\Data\VX082725\  
 Data File : VX047539.D  
 Acq On : 27 Aug 2025 14:44  
 Operator : JC/MD  
 Sample : Q2964-02DL 5X  
 Misc : 5.0mL/MSVOA\_X/WATER  
 ALS Vial : 7 Sample Multiplier: 1

Instrument :  
 MSVOA\_X  
 ClientSampleId :

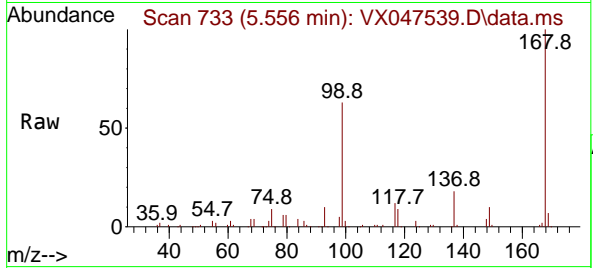
Quant Time: Aug 28 01:20:31 2025  
 Quant Method : Z:\voasrv\HPCHEM1\MSVOA\_X\Method\82X081525W.M  
 Quant Title : SW846 8260  
 QLast Update : Mon Aug 18 04:18:28 2025  
 Response via : Initial Calibration



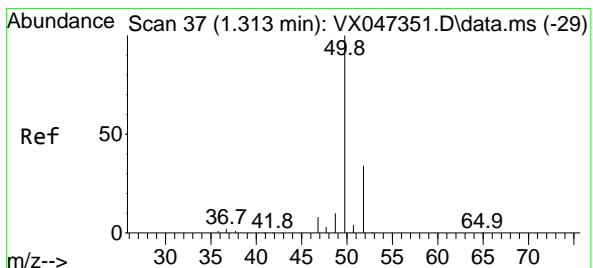
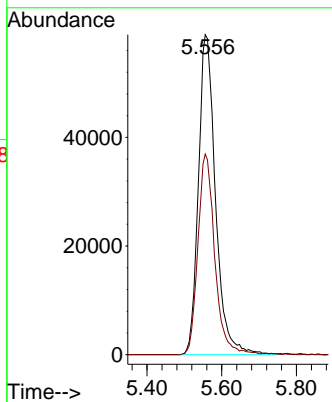
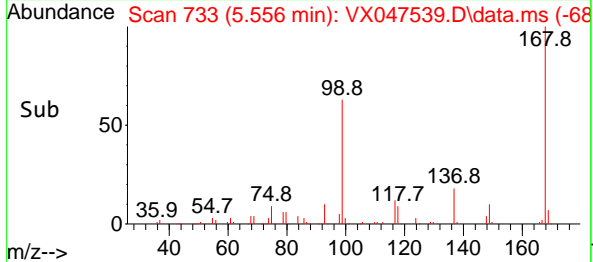


#1  
 Pentafluorobenzene  
 Concen: 50.000 ug/l  
 RT: 5.556 min Scan# 71  
 Delta R.T. -0.012 min  
 Lab File: VX047539.D  
 Acq: 27 Aug 2025 14:44

Instrument :  
 MSVOA\_X  
 ClientSampleId :

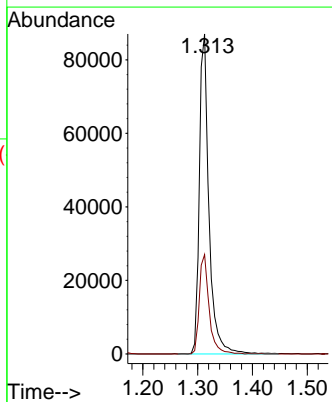
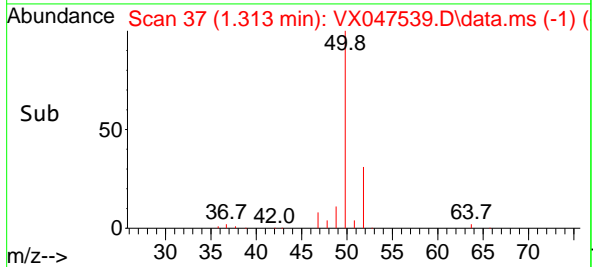
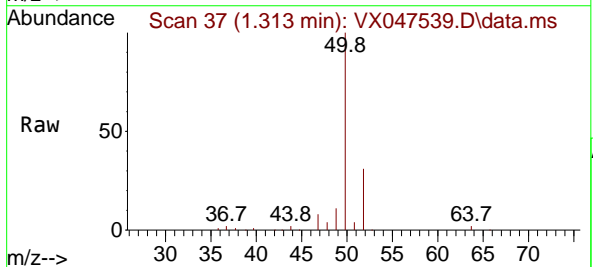


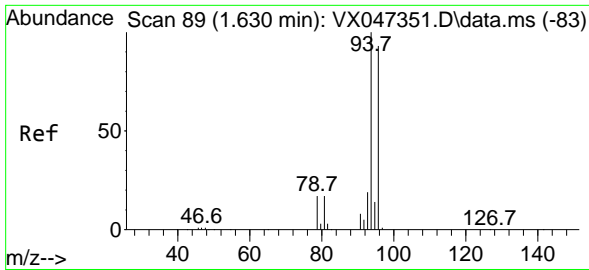
Tgt Ion:168 Resp: 187177  
 Ion Ratio Lower Upper  
 168 100  
 99 62.7 47.9 71.9



#3  
 Chloromethane  
 Concen: 49.463 ug/l  
 RT: 1.313 min Scan# 37  
 Delta R.T. 0.000 min  
 Lab File: VX047539.D  
 Acq: 27 Aug 2025 14:44

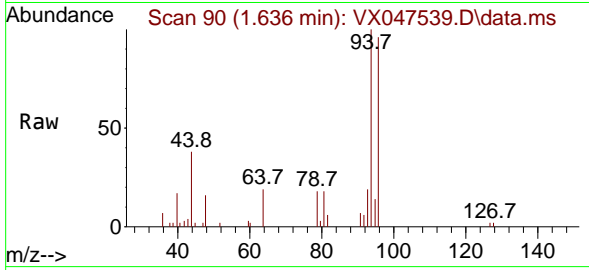
Tgt Ion: 50 Resp: 106172  
 Ion Ratio Lower Upper  
 50 100  
 52 31.1 27.0 40.4



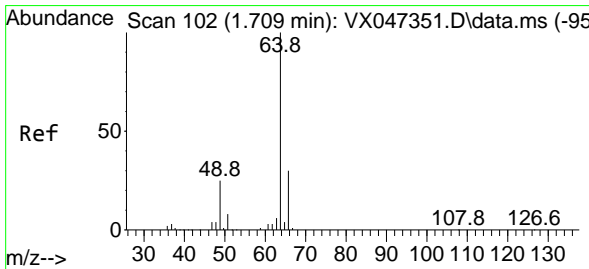
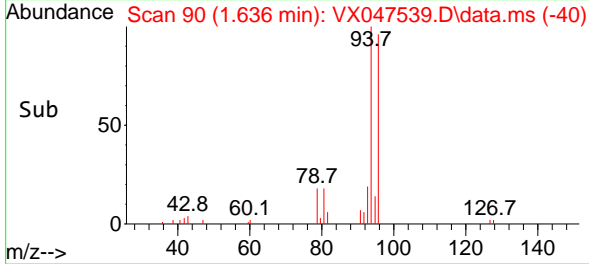
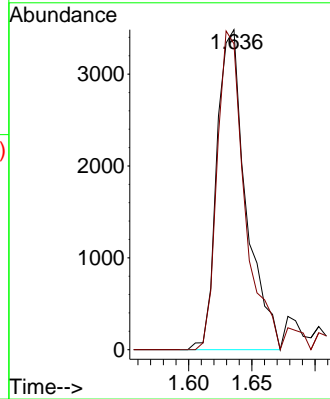


#5  
 Bromomethane  
 Concen: 5.101 ug/l  
 RT: 1.636 min Scan# 90  
 Delta R.T. 0.006 min  
 Lab File: VX047539.D  
 Acq: 27 Aug 2025 14:44

Instrument :  
 MSVOA\_X  
 ClientSampleId :

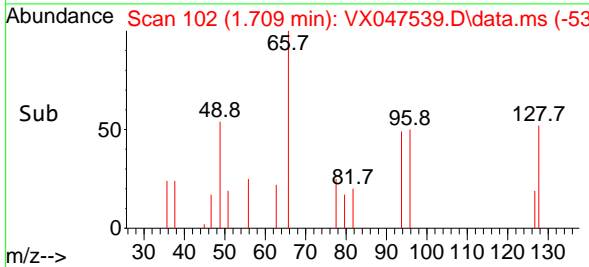
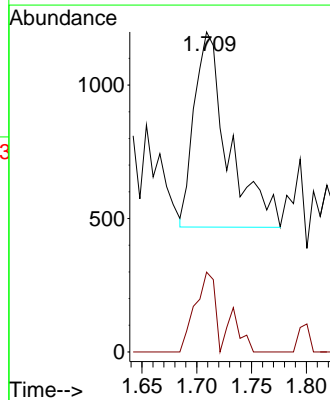
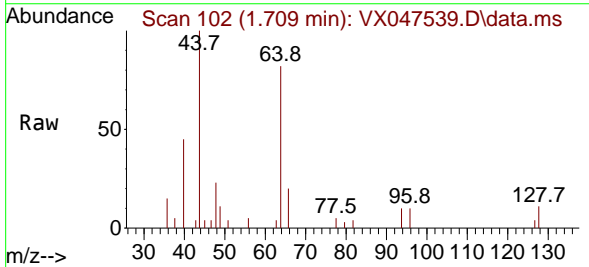


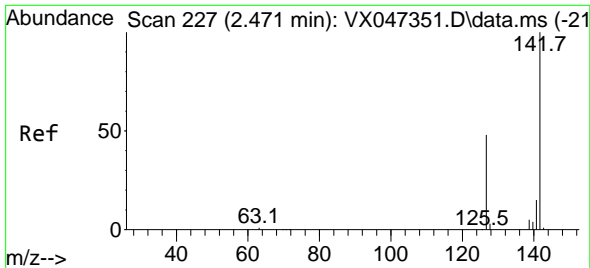
Tgt Ion: 94 Resp: 5551  
 Ion Ratio Lower Upper  
 94 100  
 96 95.6 74.7 112.1



#6  
 Chloroethane  
 Concen: 0.952 ug/l  
 RT: 1.709 min Scan# 102  
 Delta R.T. 0.000 min  
 Lab File: VX047539.D  
 Acq: 27 Aug 2025 14:44

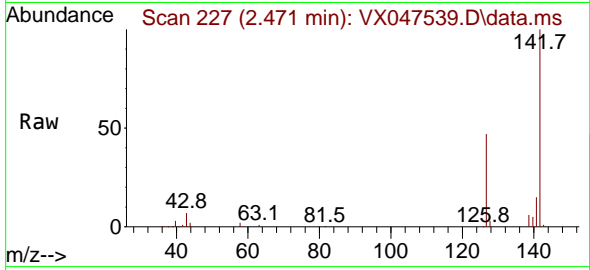
Tgt Ion: 64 Resp: 1570  
 Ion Ratio Lower Upper  
 64 100  
 66 40.9 24.4 36.6#



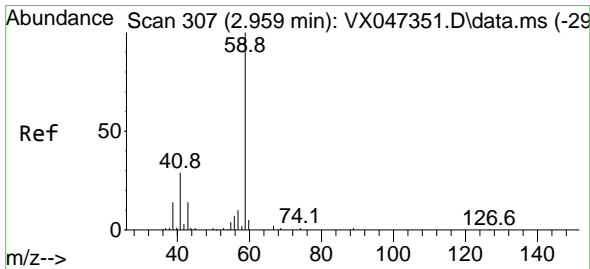
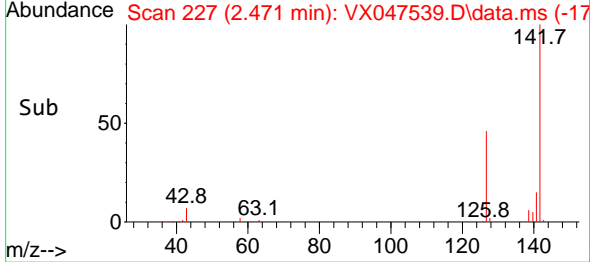
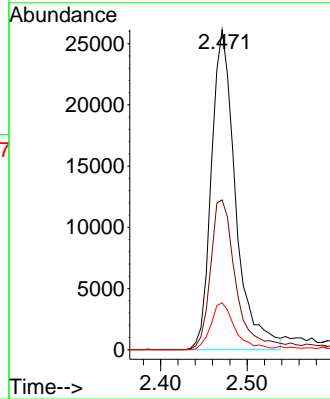


#10  
Methyl Iodide  
Concen: 12.810 ug/l  
RT: 2.471 min Scan# 21  
Delta R.T. 0.000 min  
Lab File: VX047539.D  
Acq: 27 Aug 2025 14:44

Instrument : MSVOA\_X  
ClientSampleId :

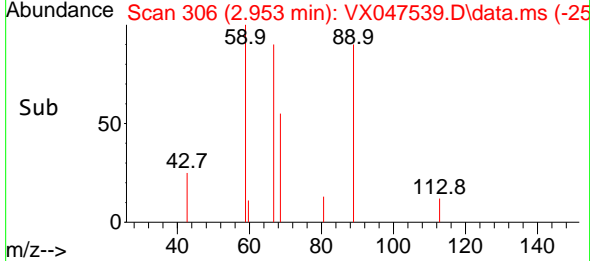
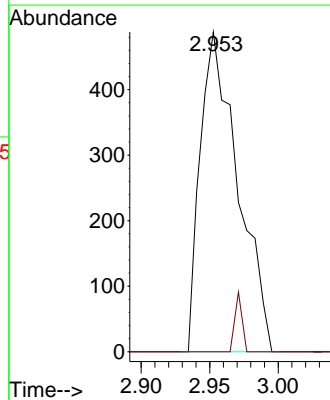
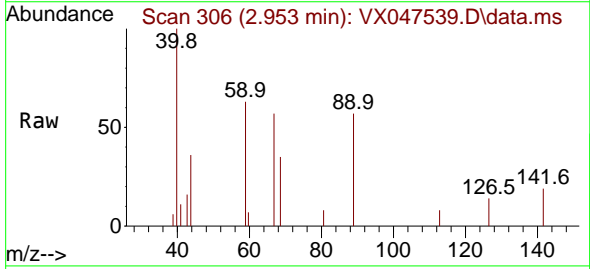


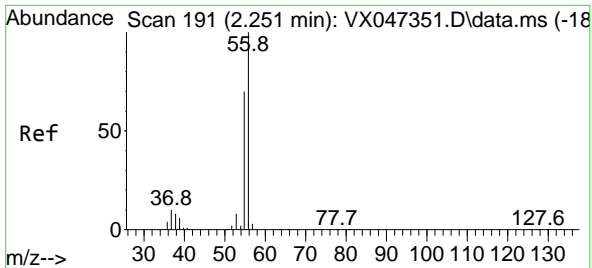
Tgt Ion:142 Resp: 50749  
Ion Ratio Lower Upper  
142 100  
127 50.0 36.1 54.1  
141 14.7 11.1 16.7



#11  
Tert butyl alcohol  
Concen: 4.090 ug/l  
RT: 2.953 min Scan# 306  
Delta R.T. -0.006 min  
Lab File: VX047539.D  
Acq: 27 Aug 2025 14:44

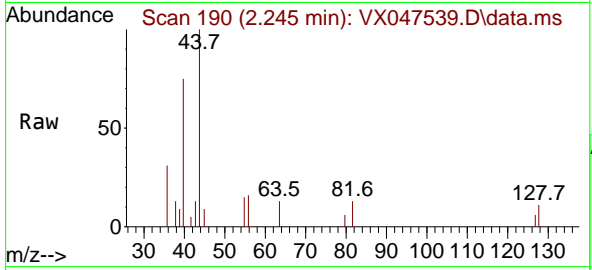
Tgt Ion: 59 Resp: 932  
Ion Ratio Lower Upper  
59 100  
57 3.5 8.3 12.5#



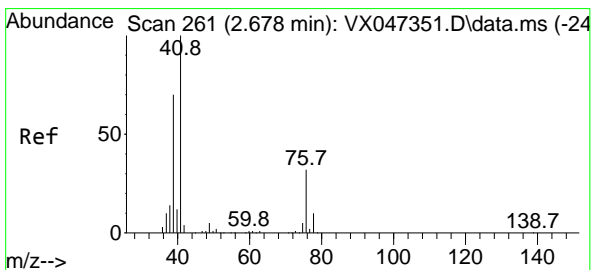
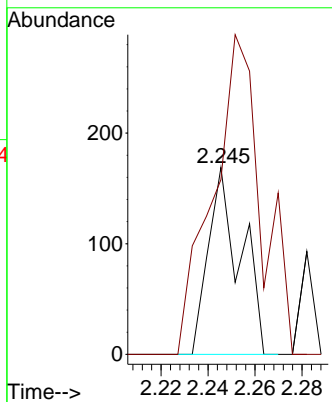
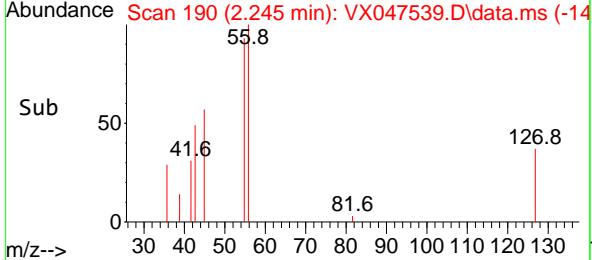


#13  
 Acrolein  
 Concen: 0.335 ug/l  
 RT: 2.245 min Scan# 191  
 Delta R.T. -0.006 min  
 Lab File: VX047539.D  
 Acq: 27 Aug 2025 14:44

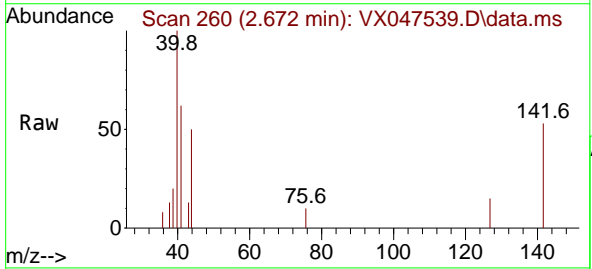
Instrument : MSVOA\_X  
 ClientSampleId :



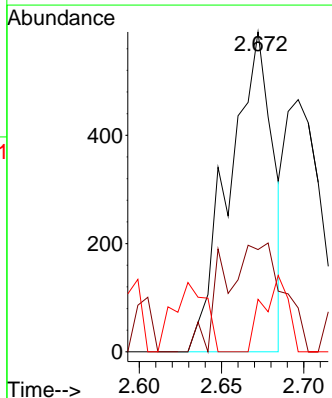
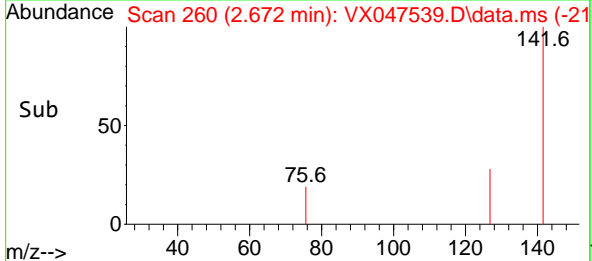
Tgt Ion: 56 Resp: 161  
 Ion Ratio Lower Upper  
 56 100  
 55 257.1 55.5 83.3#

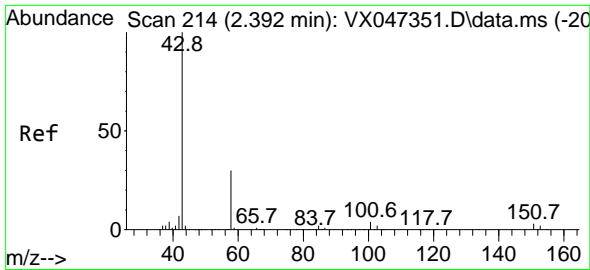


#14  
 Allyl chloride  
 Concen: 0.267 ug/l  
 RT: 2.672 min Scan# 260  
 Delta R.T. -0.006 min  
 Lab File: VX047539.D  
 Acq: 27 Aug 2025 14:44



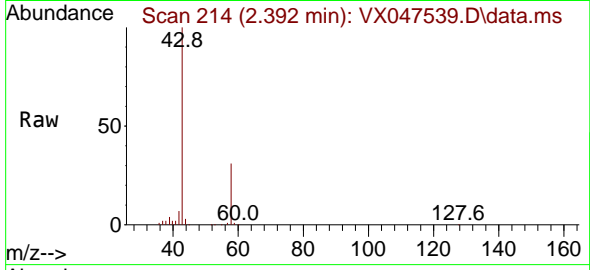
Tgt Ion: 41 Resp: 1093  
 Ion Ratio Lower Upper  
 41 100  
 39 45.9 54.6 81.8#  
 76 0.0 27.6 41.4#



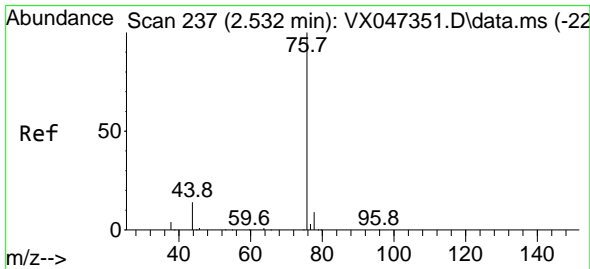
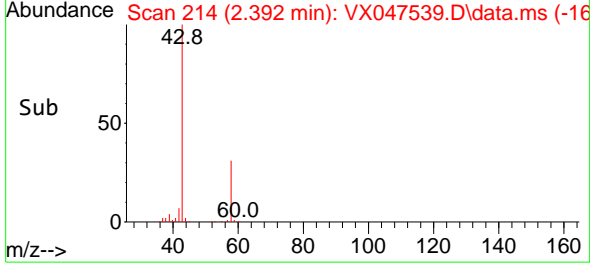
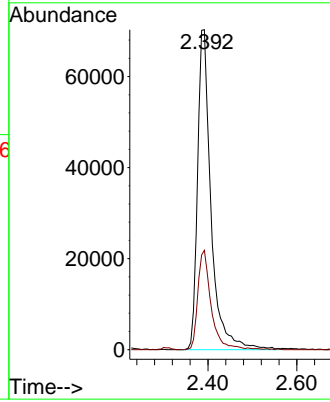


#16  
 Acetone  
 Concen: 150.114 ug/l  
 RT: 2.392 min Scan# 216  
 Delta R.T. 0.000 min  
 Lab File: VX047539.D  
 Acq: 27 Aug 2025 14:44

Instrument :  
 MSVOA\_X  
 ClientSampleId :

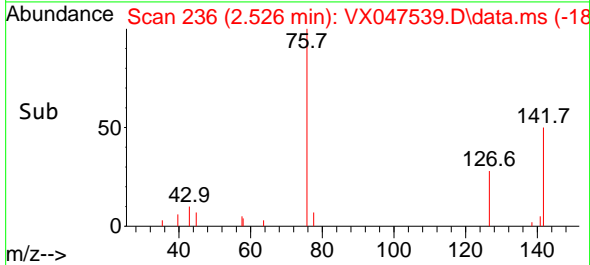
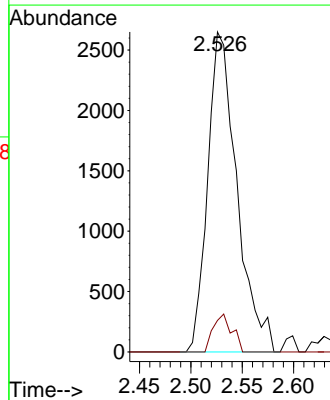
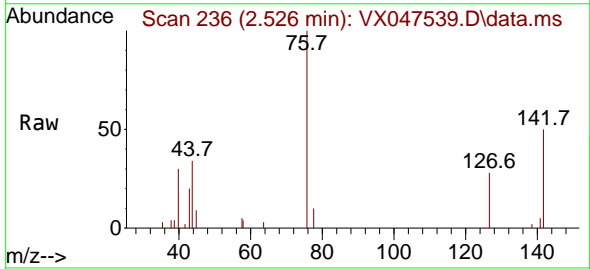


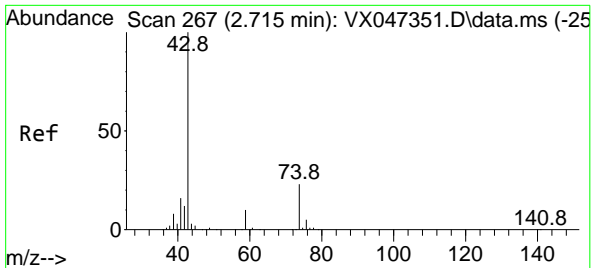
Tgt Ion: 43 Resp: 147811  
 Ion Ratio Lower Upper  
 43 100  
 58 31.0 24.8 37.2



#17  
 Carbon Disulfide  
 Concen: 0.736 ug/l  
 RT: 2.526 min Scan# 236  
 Delta R.T. -0.006 min  
 Lab File: VX047539.D  
 Acq: 27 Aug 2025 14:44

Tgt Ion: 76 Resp: 5234  
 Ion Ratio Lower Upper  
 76 100  
 78 9.8 7.2 10.8

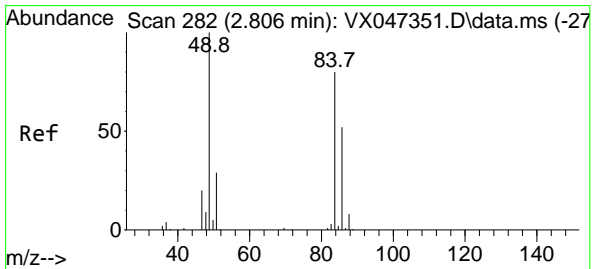
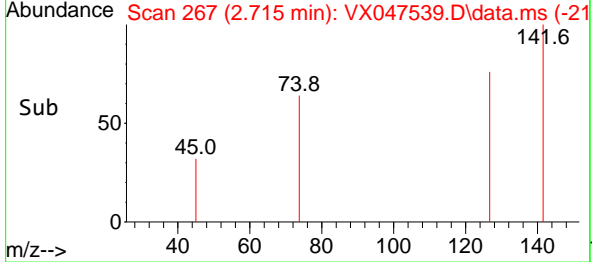
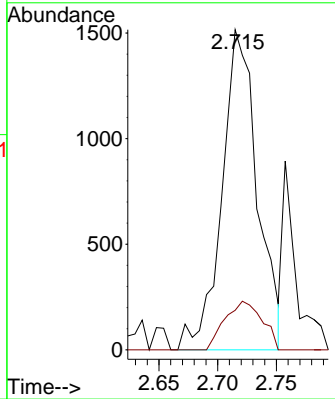
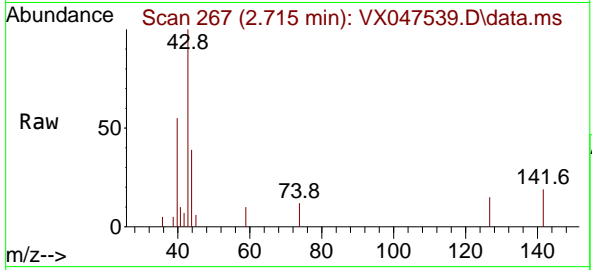




#18  
 Methyl Acetate  
 Concen: 1.245 ug/l  
 RT: 2.715 min Scan# 20  
 Delta R.T. 0.000 min  
 Lab File: VX047539.D  
 Acq: 27 Aug 2025 14:44

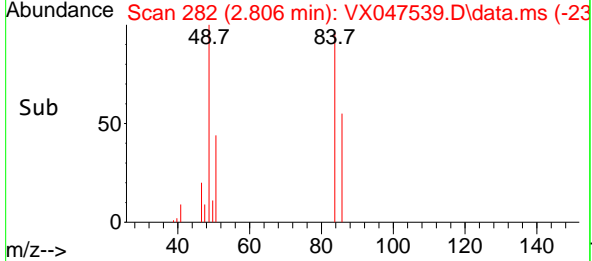
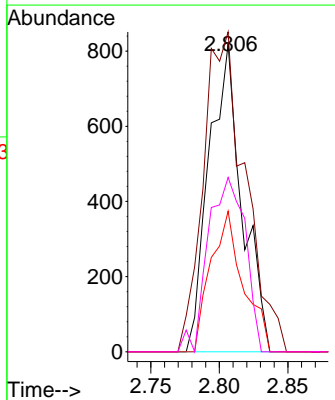
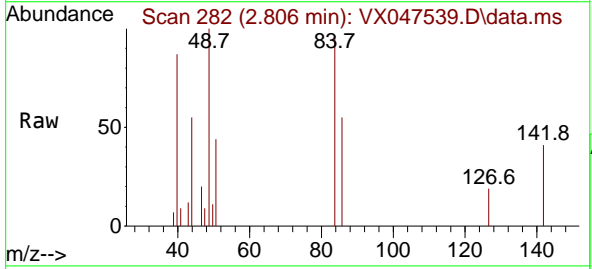
Instrument : MSVOA\_X  
 ClientSampleId :

Tgt Ion: 43 Resp: 3176  
 Ion Ratio Lower Upper  
 43 100  
 74 16.0 18.4 27.6#

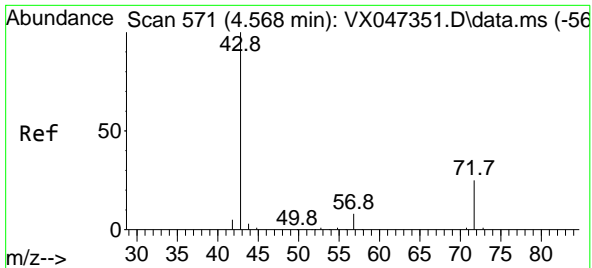


#20  
 Methylene Chloride  
 Concen: 0.527 ug/l  
 RT: 2.806 min Scan# 282  
 Delta R.T. 0.000 min  
 Lab File: VX047539.D  
 Acq: 27 Aug 2025 14:44

Tgt Ion: 84 Resp: 1374  
 Ion Ratio Lower Upper  
 84 100  
 49 103.9 100.1 150.1  
 51 45.7 29.5 44.3#  
 86 56.7 51.8 77.8

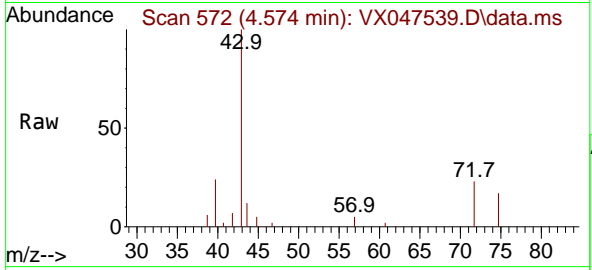




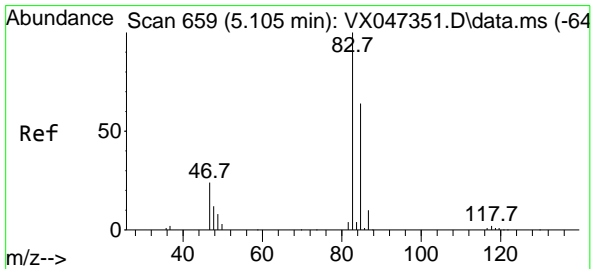
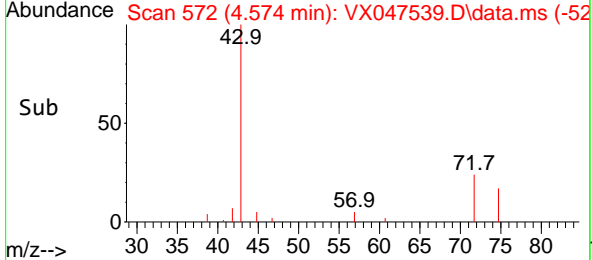
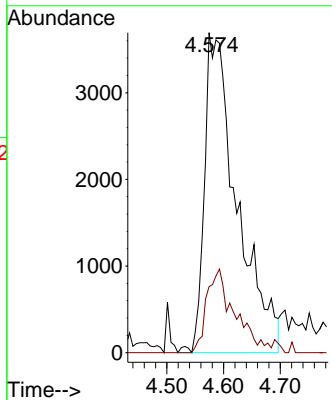


#25  
 2-Butanone  
 Concen: 11.377 ug/l  
 RT: 4.574 min Scan# 51  
 Delta R.T. 0.006 min  
 Lab File: VX047539.D  
 Acq: 27 Aug 2025 14:44

Instrument :  
 MSVOA\_X  
 ClientSampleId :

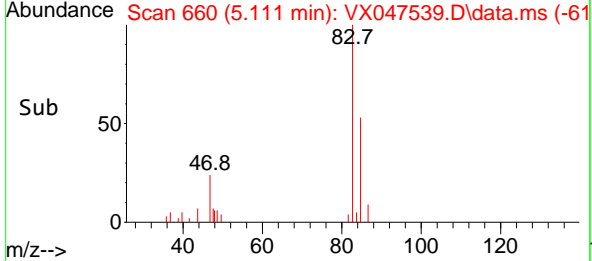
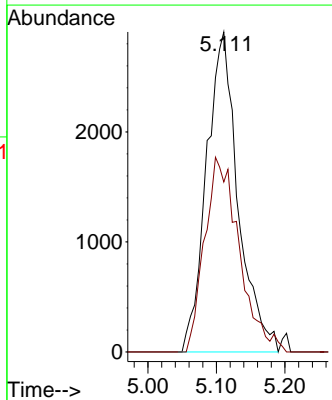
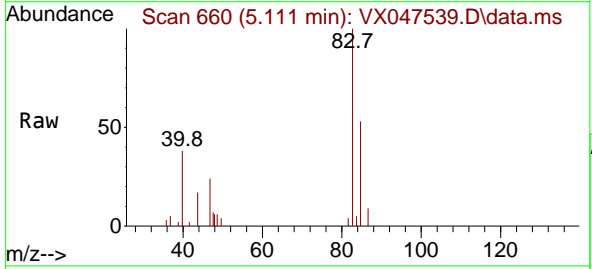


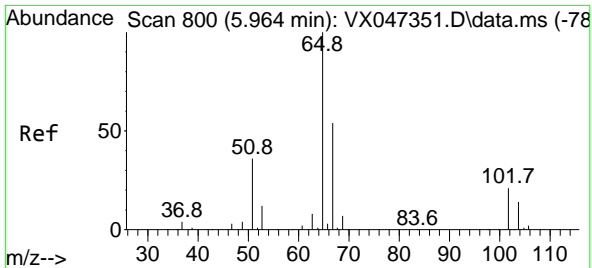
Tgt Ion: 43 Resp: 14672  
 Ion Ratio Lower Upper  
 43 100  
 72 20.7 19.8 29.8



#30  
 Chloroform  
 Concen: 1.998 ug/l  
 RT: 5.111 min Scan# 660  
 Delta R.T. 0.006 min  
 Lab File: VX047539.D  
 Acq: 27 Aug 2025 14:44

Tgt Ion: 83 Resp: 9325  
 Ion Ratio Lower Upper  
 83 100  
 85 53.1 51.2 76.8

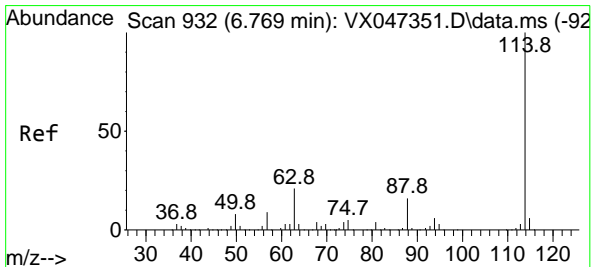
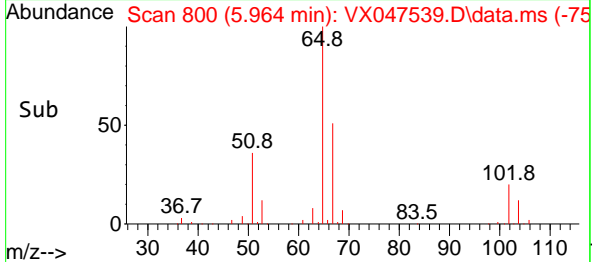
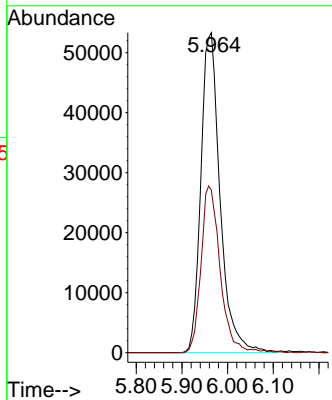
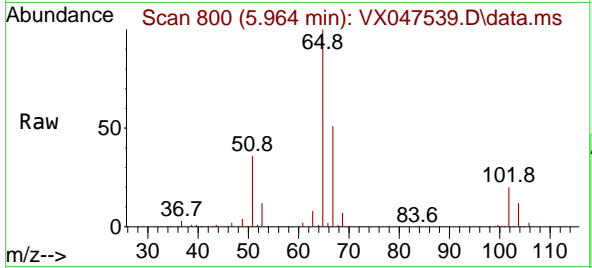




#33  
 1,2-Dichloroethane-d4  
 Concen: 59.483 ug/l  
 RT: 5.964 min Scan# 800  
 Delta R.T. 0.000 min  
 Lab File: VX047539.D  
 Acq: 27 Aug 2025 14:44

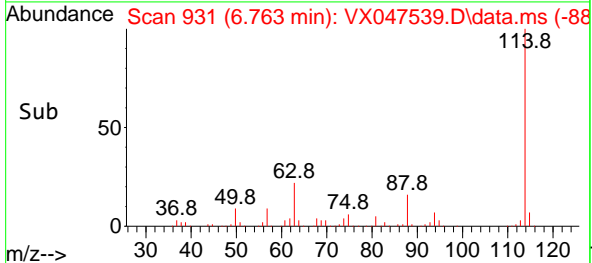
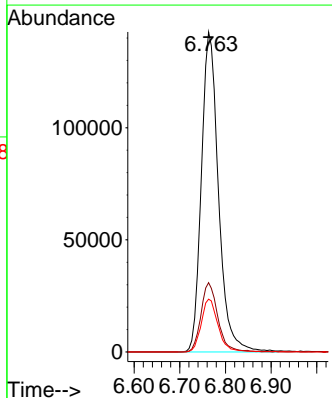
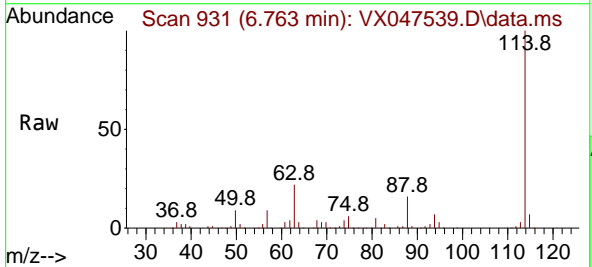
Instrument : MSVOA\_X  
 ClientSampleId :

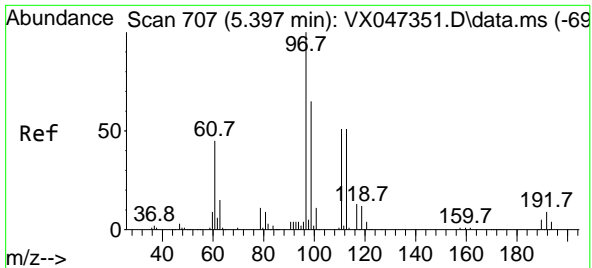
Tgt Ion: 65 Resp: 155823  
 Ion Ratio Lower Upper  
 65 100  
 67 52.0 0.0 106.0



#34  
 1,4-Difluorobenzene  
 Concen: 50.000 ug/l  
 RT: 6.763 min Scan# 931  
 Delta R.T. -0.006 min  
 Lab File: VX047539.D  
 Acq: 27 Aug 2025 14:44

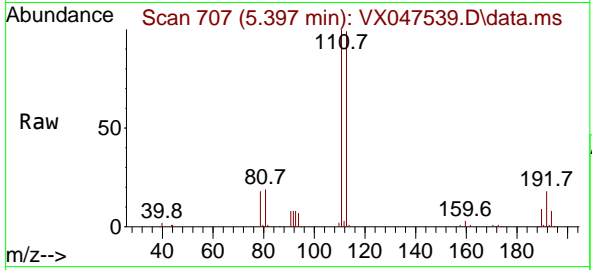
Tgt Ion:114 Resp: 371185  
 Ion Ratio Lower Upper  
 114 100  
 63 21.6 0.0 42.4  
 88 16.5 0.0 33.0



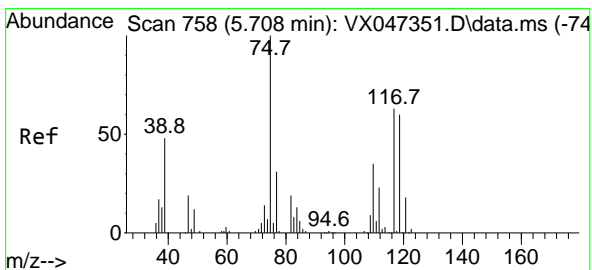
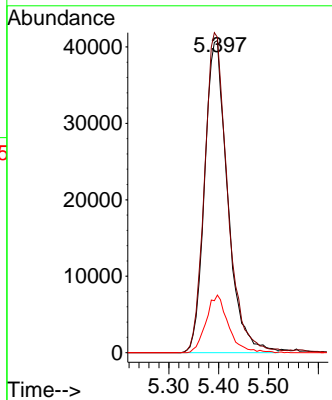
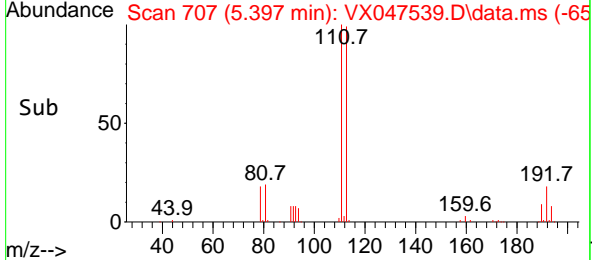


#35  
 Dibromofluoromethane  
 Concen: 54.207 ug/l  
 RT: 5.397 min Scan# 707  
 Delta R.T. 0.000 min  
 Lab File: VX047539.D  
 Acq: 27 Aug 2025 14:44

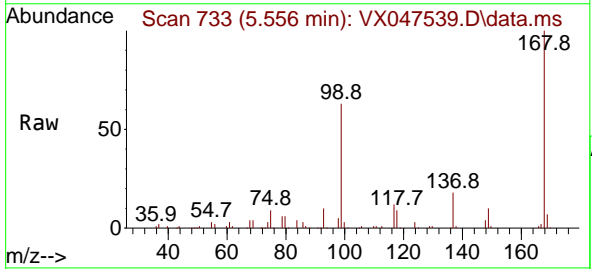
Instrument : MSVOA\_X  
 ClientSampleId :



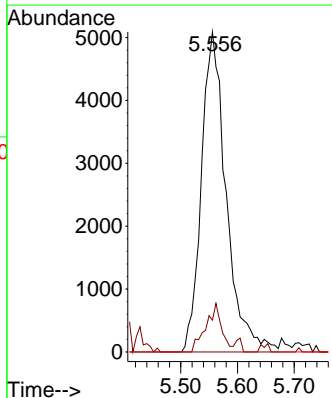
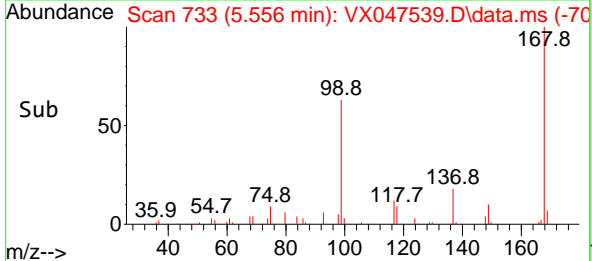
Tgt Ion: 113 Resp: 130586  
 Ion Ratio Lower Upper  
 113 100  
 111 103.2 81.4 122.2  
 192 18.0 14.1 21.1

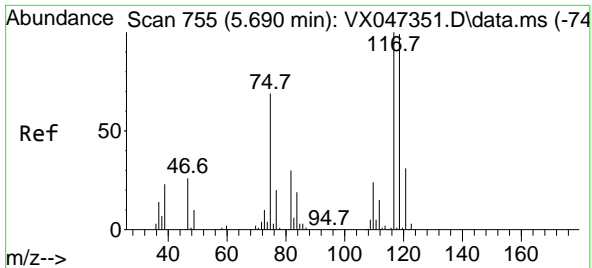


#36  
 1,1-Dichloropropene  
 Concen: 4.069 ug/l  
 RT: 5.556 min Scan# 733  
 Delta R.T. -0.152 min  
 Lab File: VX047539.D  
 Acq: 27 Aug 2025 14:44



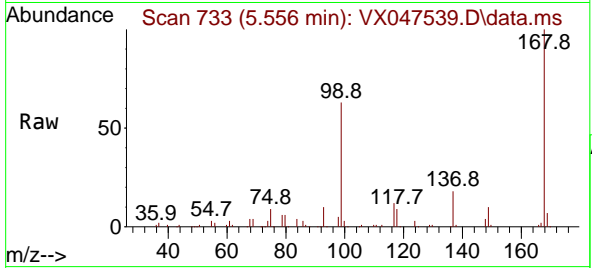
Tgt Ion: 75 Resp: 15472  
 Ion Ratio Lower Upper  
 75 100  
 110 9.4 17.4 52.2#  
 77 0.0 24.4 36.6#



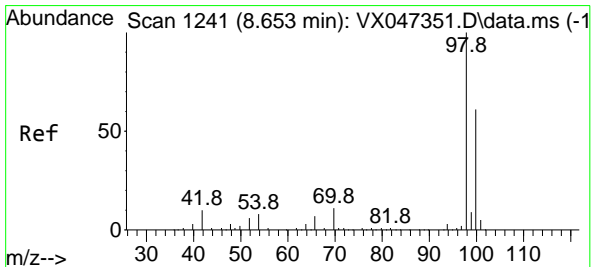
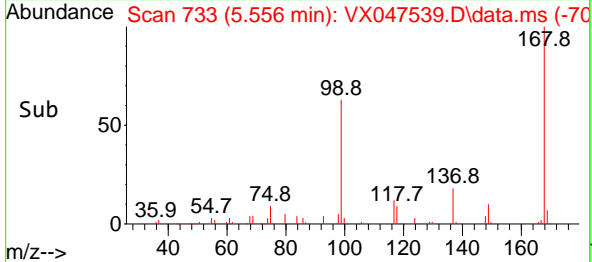
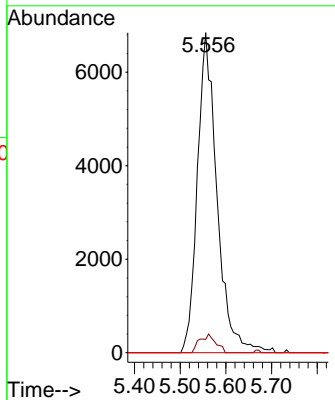


#38  
 Carbon Tetrachloride  
 Concen: 4.921 ug/l  
 RT: 5.556 min Scan# 71  
 Delta R.T. -0.134 min  
 Lab File: VX047539.D  
 Acq: 27 Aug 2025 14:44

Instrument :  
 MSVOA\_X  
 ClientSampleId :

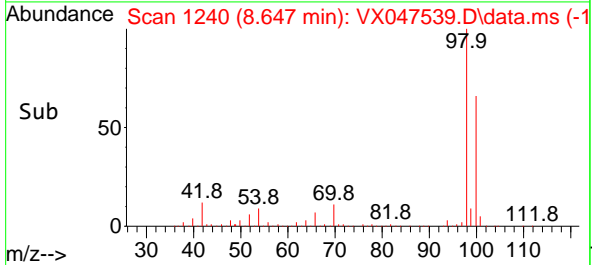
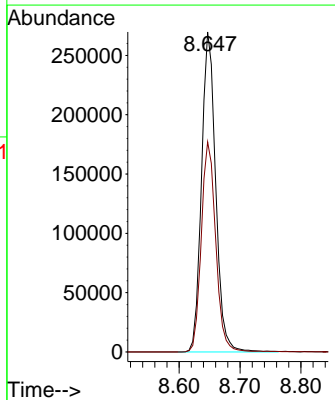
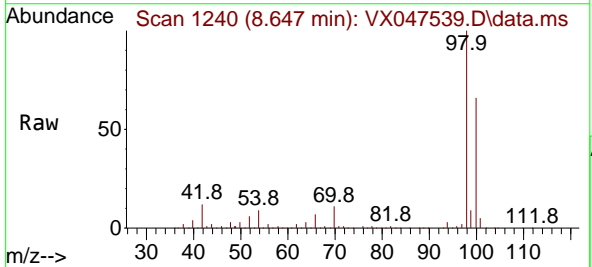


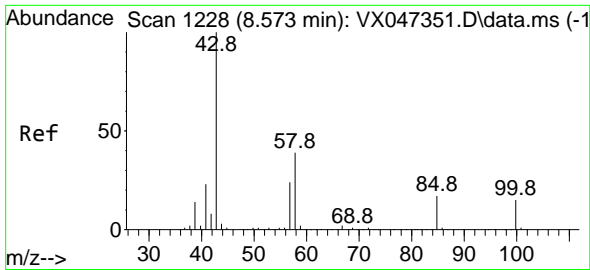
Tgt Ion:117 Resp: 20449  
 Ion Ratio Lower Upper  
 117 100  
 119 4.1 78.5 117.7#  
 121 0.0 24.7 37.1#



#50  
 Toluene-d8  
 Concen: 50.683 ug/l  
 RT: 8.647 min Scan# 1240  
 Delta R.T. -0.006 min  
 Lab File: VX047539.D  
 Acq: 27 Aug 2025 14:44

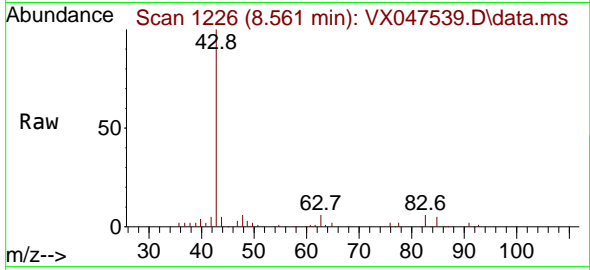
Tgt Ion: 98 Resp: 436410  
 Ion Ratio Lower Upper  
 98 100  
 100 67.1 53.9 80.9



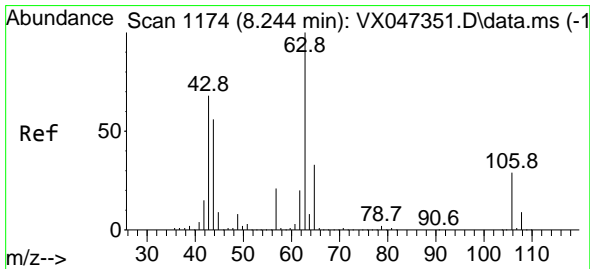
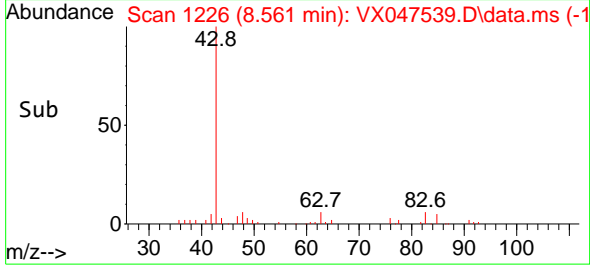
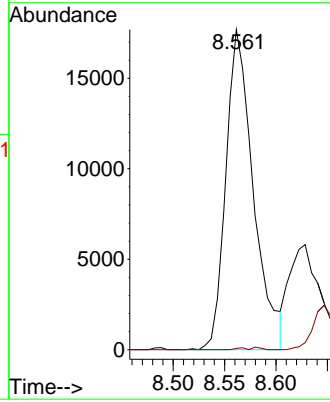


#51  
 4-Methyl-2-Pentanone  
 Concen: 10.073 ug/l  
 RT: 8.561 min Scan# 1166  
 Delta R.T. -0.012 min  
 Lab File: VX047539.D  
 Acq: 27 Aug 2025 14:44

Instrument : MSVOA\_X  
 ClientSampleId :

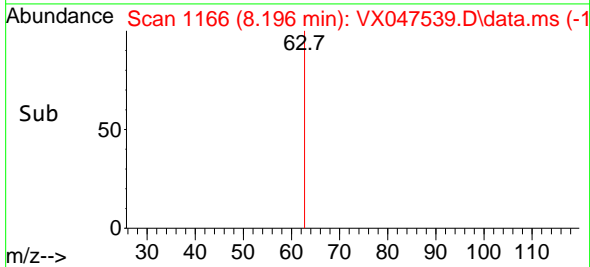
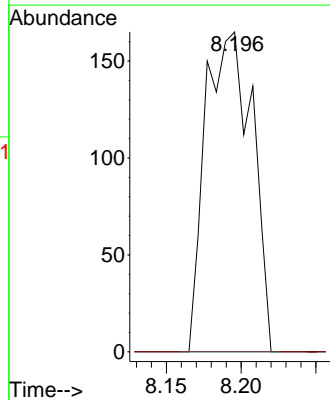
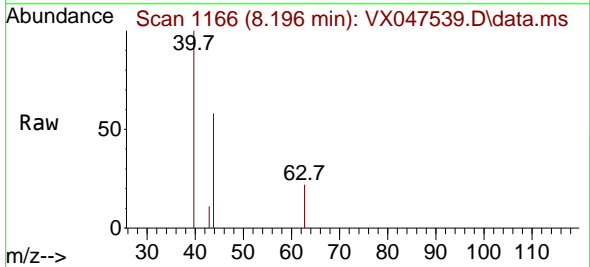


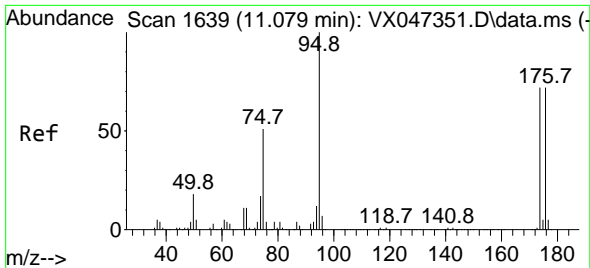
Tgt Ion: 43 Resp: 32875  
 Ion Ratio Lower Upper  
 43 100  
 58 0.0 31.2 46.8#



#58  
 2-Chloroethyl Vinyl ether  
 Concen: 8.540 ug/l  
 RT: 8.196 min Scan# 1166  
 Delta R.T. -0.049 min  
 Lab File: VX047539.D  
 Acq: 27 Aug 2025 14:44

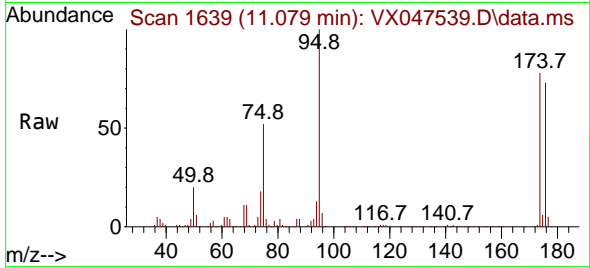
Tgt Ion: 63 Resp: 359  
 Ion Ratio Lower Upper  
 63 100  
 106 0.0 22.8 34.2#



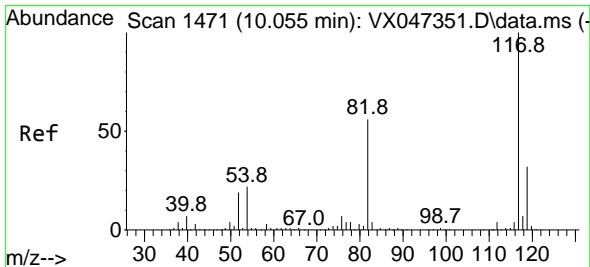
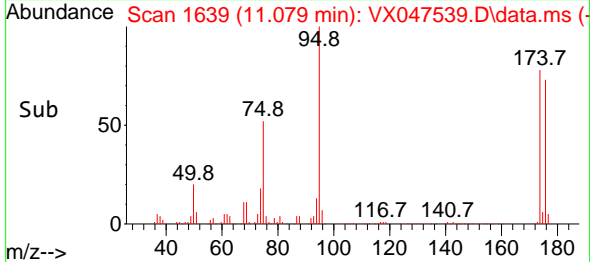
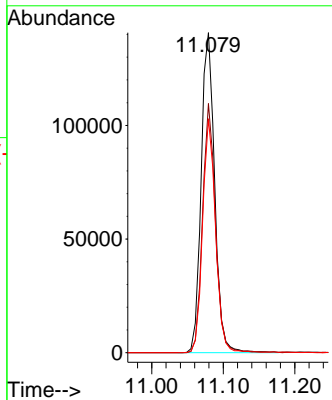


#62  
 4-Bromofluorobenzene  
 Concen: 58.025 ug/l  
 RT: 11.079 min Scan# 1639  
 Delta R.T. 0.000 min  
 Lab File: VX047539.D  
 Acq: 27 Aug 2025 14:44

Instrument : MSVOA\_X  
 ClientSampleId :

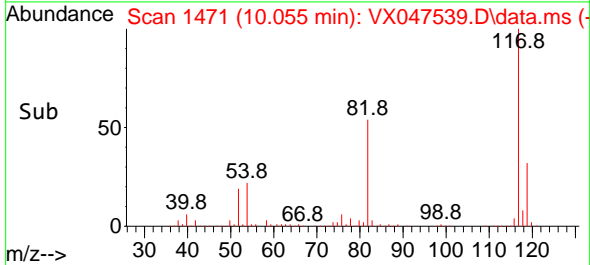
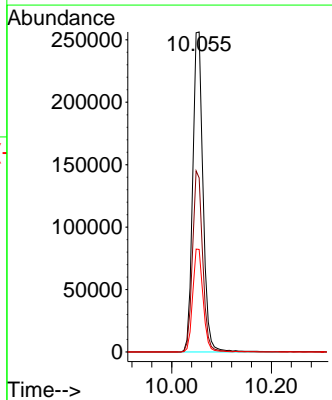
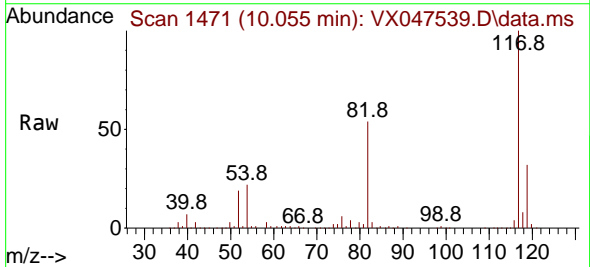


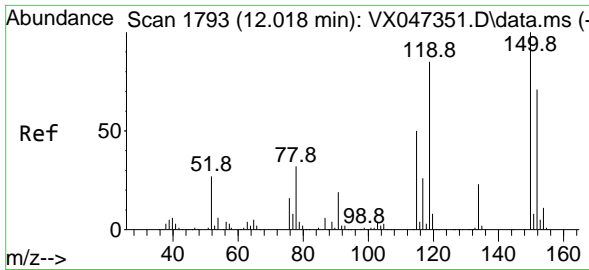
Tgt Ion: 95 Resp: 184372  
 Ion Ratio Lower Upper  
 95 100  
 174 74.6 0.0 148.0  
 176 70.4 0.0 145.4



#63  
 Chlorobenzene-d5  
 Concen: 50.000 ug/l  
 RT: 10.055 min Scan# 1471  
 Delta R.T. 0.000 min  
 Lab File: VX047539.D  
 Acq: 27 Aug 2025 14:44

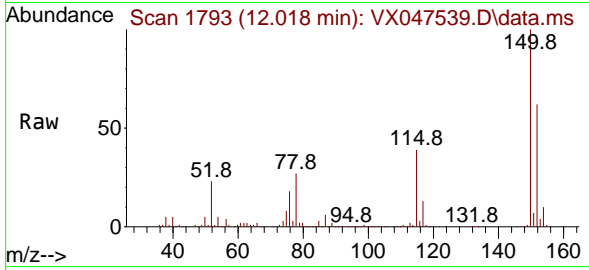
Tgt Ion: 117 Resp: 366426  
 Ion Ratio Lower Upper  
 117 100  
 82 54.4 45.0 67.4  
 119 32.1 25.8 38.8



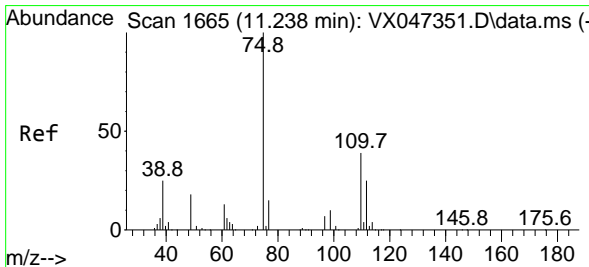
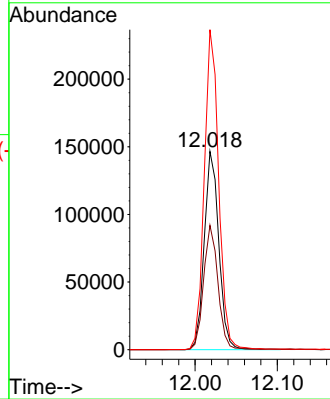
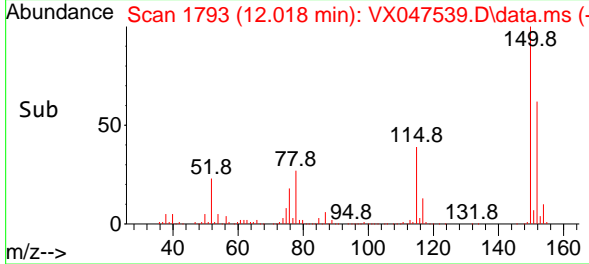


#72  
 1,4-Dichlorobenzene-d4  
 Concen: 50.000 ug/l  
 RT: 12.018 min Scan# 1  
 Delta R.T. 0.000 min  
 Lab File: VX047539.D  
 Acq: 27 Aug 2025 14:44

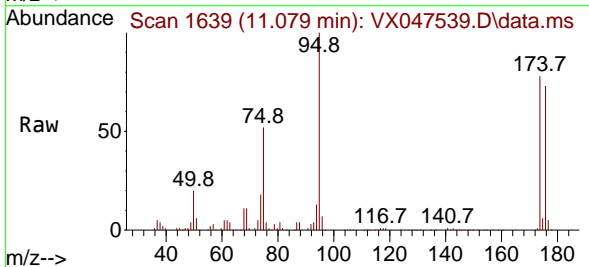
Instrument :  
 MSVOA\_X  
 ClientSampleId :



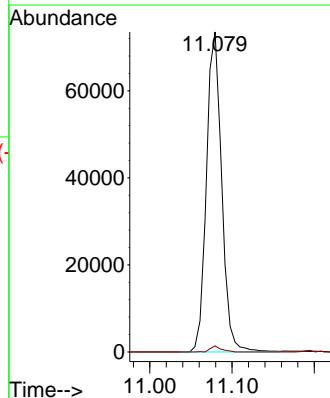
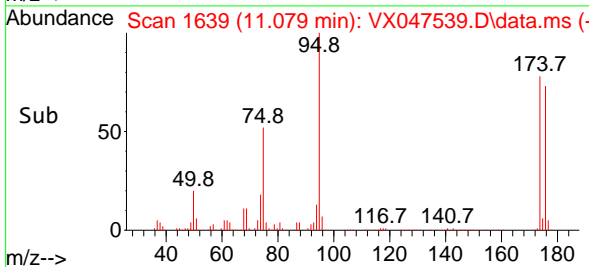
Tgt Ion:152 Resp: 181024  
 Ion Ratio Lower Upper  
 152 100  
 115 61.8 44.6 133.8  
 150 159.4 0.0 349.8

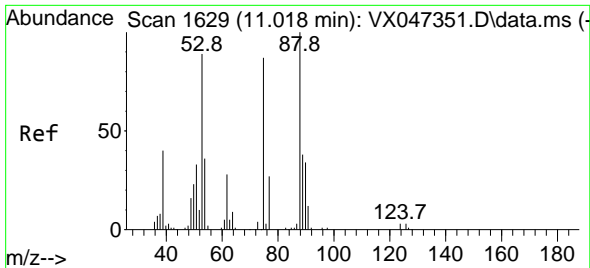


#76  
 1,2,3-Trichloropropane  
 Concen: 28.544 ug/l  
 RT: 11.079 min Scan# 1639  
 Delta R.T. -0.158 min  
 Lab File: VX047539.D  
 Acq: 27 Aug 2025 14:44



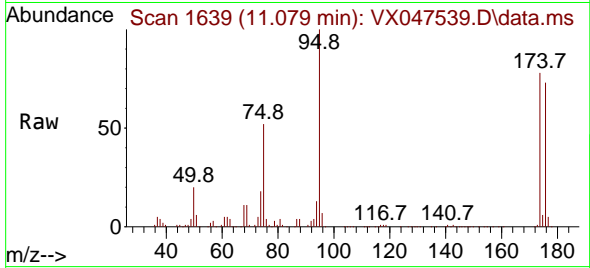
Tgt Ion: 75 Resp: 94772  
 Ion Ratio Lower Upper  
 75 100  
 77 1.4 19.4 58.2#



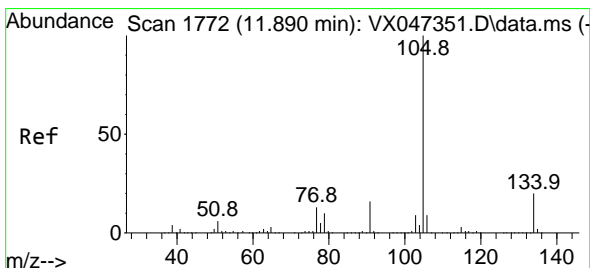
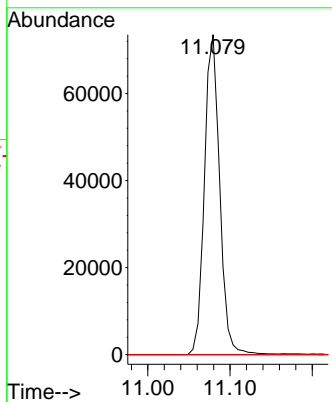
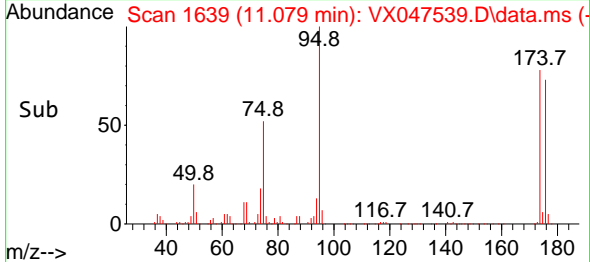


#81  
 trans-1,4-Dichloro-2-butene  
 Concen: 112.424 ug/l  
 RT: 11.079 min Scan# 1639  
 Delta R.T. 0.061 min  
 Lab File: VX047539.D  
 Acq: 27 Aug 2025 14:44

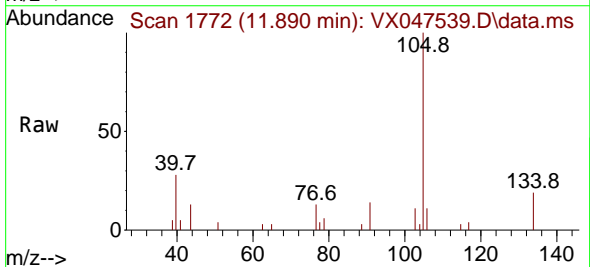
Instrument : MSVOA\_X  
 ClientSampleId :



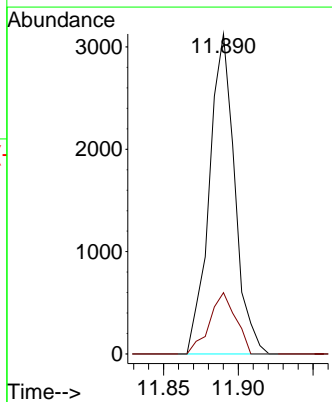
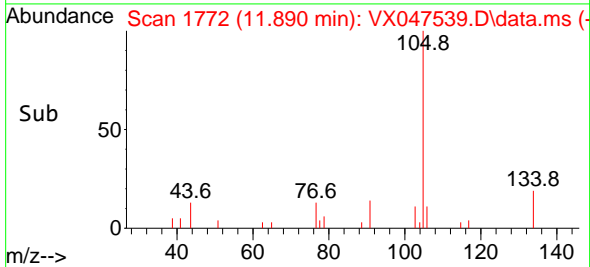
Tgt Ion: 75 Resp: 94772  
 Ion Ratio Lower Upper  
 75 100  
 53 0.0 85.2 127.8#  
 89 0.0 36.7 55.1#



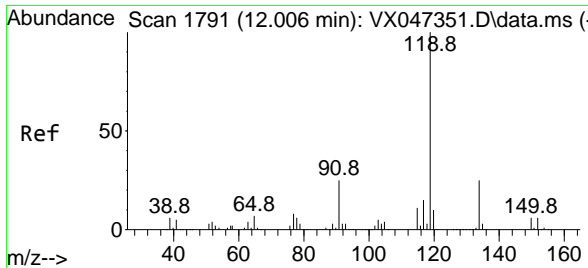
#85  
 sec-Butylbenzene  
 Concen: 0.256 ug/l  
 RT: 11.890 min Scan# 1772  
 Delta R.T. 0.000 min  
 Lab File: VX047539.D  
 Acq: 27 Aug 2025 14:44



Tgt Ion: 105 Resp: 3691  
 Ion Ratio Lower Upper  
 105 100  
 134 19.8 9.8 29.5

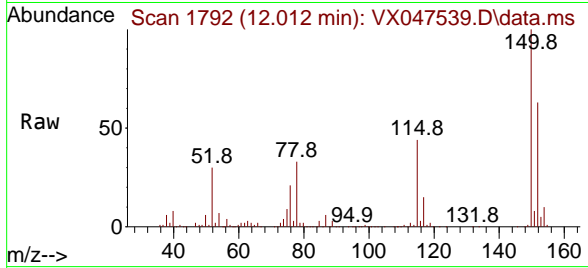




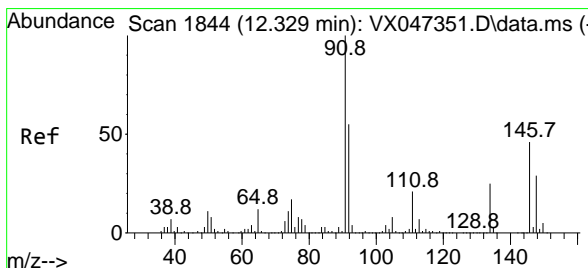
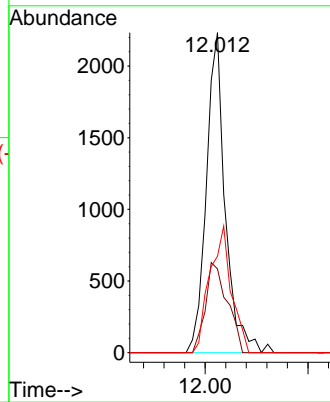
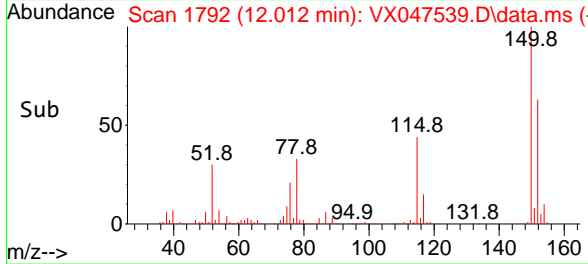


#86  
 p-Isopropyltoluene  
 Concen: 0.234 ug/l  
 RT: 12.012 min Scan# 1792  
 Delta R.T. 0.006 min  
 Lab File: VX047539.D  
 Acq: 27 Aug 2025 14:44

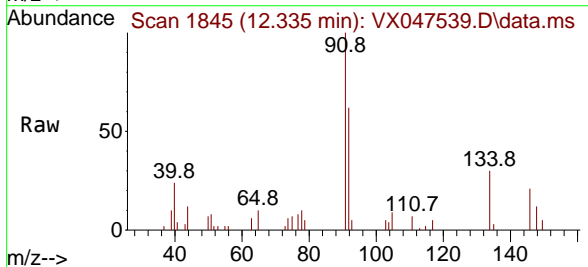
Instrument :  
 MSVOA\_X  
 ClientSampleId :



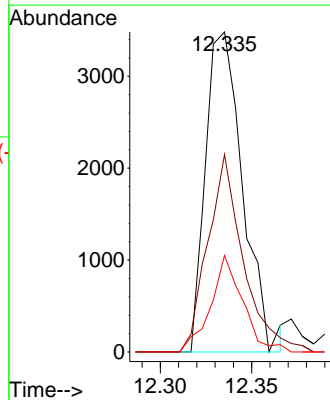
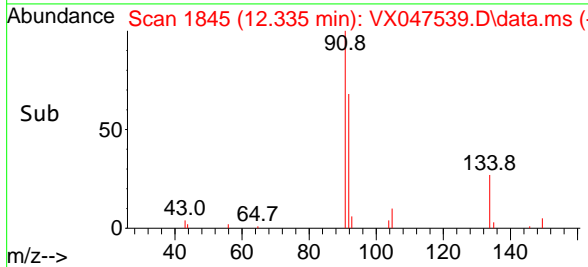
Tgt Ion: 119 Resp: 2854  
 Ion Ratio Lower Upper  
 119 100  
 134 32.6 12.8 38.4  
 91 45.3 12.4 37.4#

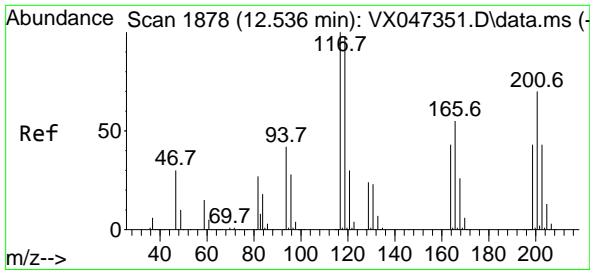


#89  
 n-Butylbenzene  
 Concen: 0.435 ug/l  
 RT: 12.335 min Scan# 1845  
 Delta R.T. 0.006 min  
 Lab File: VX047539.D  
 Acq: 27 Aug 2025 14:44



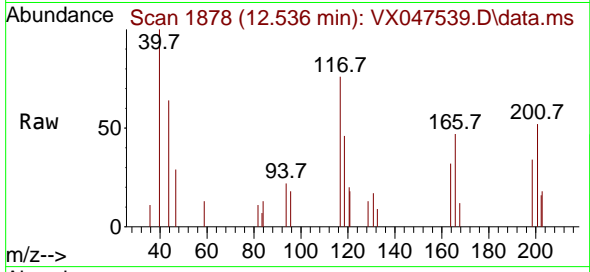
Tgt Ion: 91 Resp: 4939  
 Ion Ratio Lower Upper  
 91 100  
 92 59.0 27.2 81.5  
 134 26.0 12.6 37.8



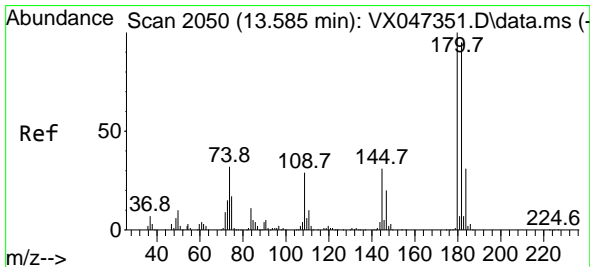
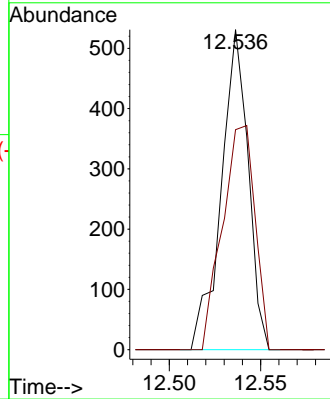
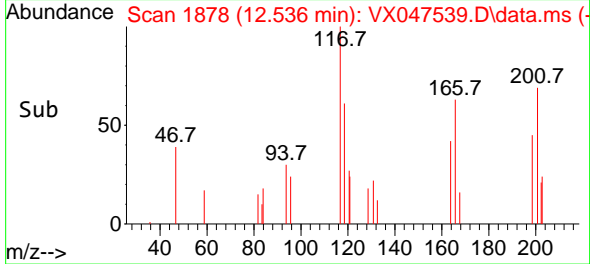


#90  
 Hexachloroethane  
 Concen: 0.255 ug/l  
 RT: 12.536 min Scan# 117  
 Delta R.T. 0.000 min  
 Lab File: VX047539.D  
 Acq: 27 Aug 2025 14:44

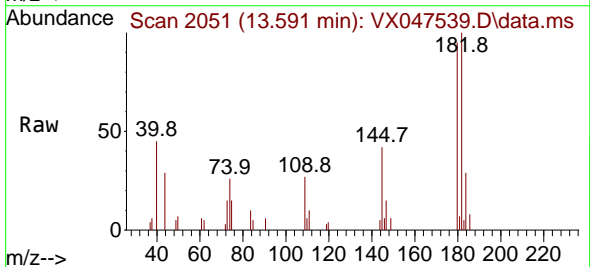
Instrument : MSVOA\_X  
 ClientSampleId :



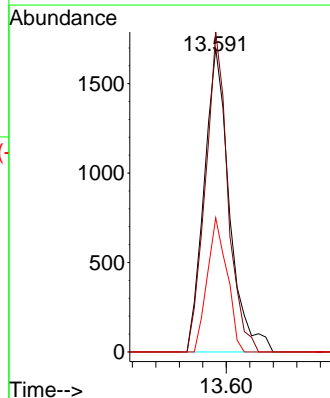
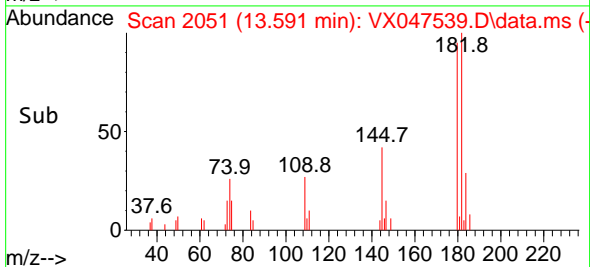
Tgt Ion:117 Resp: 545  
 Ion Ratio Lower Upper  
 117 100  
 201 84.6 35.1 105.3

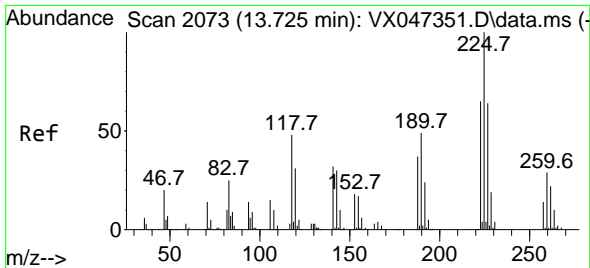


#93  
 1,2,4-Trichlorobenzene  
 Concen: 0.603 ug/l  
 RT: 13.591 min Scan# 2051  
 Delta R.T. 0.006 min  
 Lab File: VX047539.D  
 Acq: 27 Aug 2025 14:44



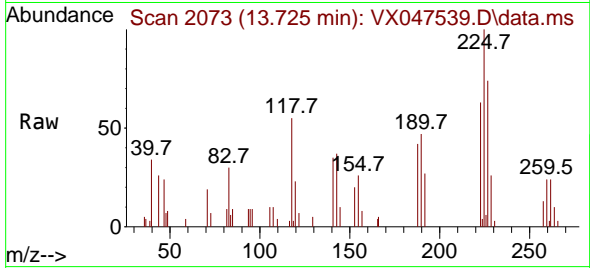
Tgt Ion:180 Resp: 2534  
 Ion Ratio Lower Upper  
 180 100  
 182 93.6 48.1 144.4  
 145 34.6 16.2 48.5



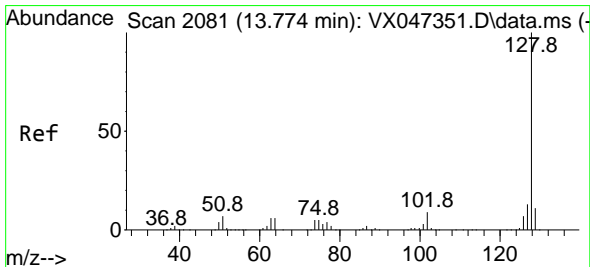
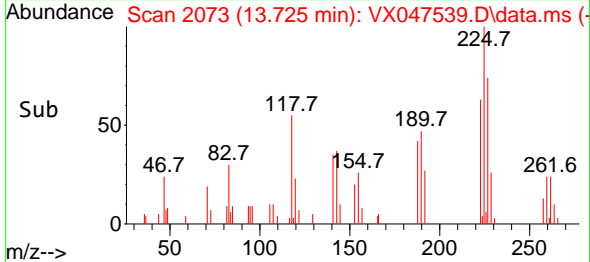
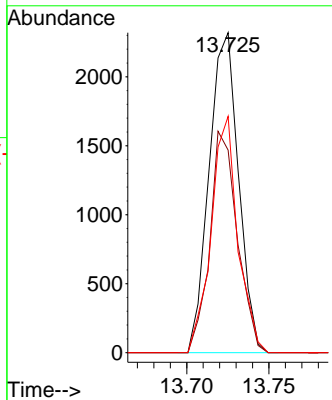


#94  
 Hexachlorobutadiene  
 Concen: 1.929 ug/l  
 RT: 13.725 min Scan# 2073  
 Delta R.T. 0.000 min  
 Lab File: VX047539.D  
 Acq: 27 Aug 2025 14:44

Instrument : MSVOA\_X  
 ClientSampleId :

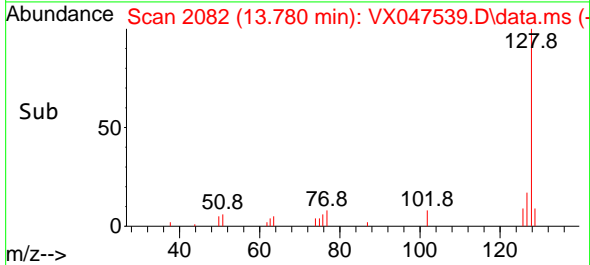
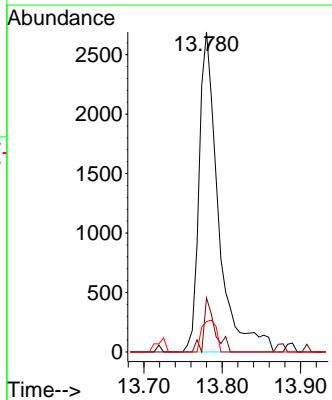
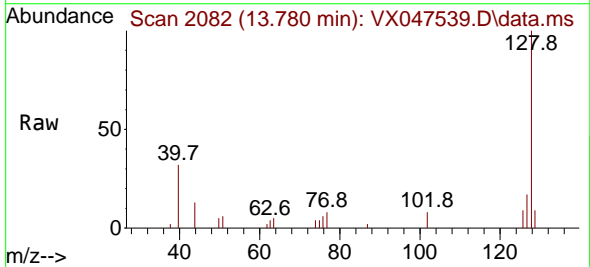


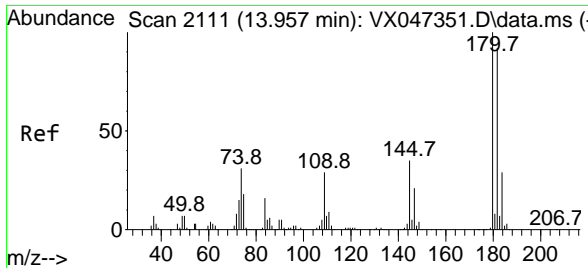
Tgt Ion:225 Resp: 2887  
 Ion Ratio Lower Upper  
 225 100  
 223 64.8 32.2 96.6  
 227 66.7 31.6 95.0



#95  
 Naphthalene  
 Concen: 0.383 ug/l  
 RT: 13.780 min Scan# 2082  
 Delta R.T. 0.006 min  
 Lab File: VX047539.D  
 Acq: 27 Aug 2025 14:44

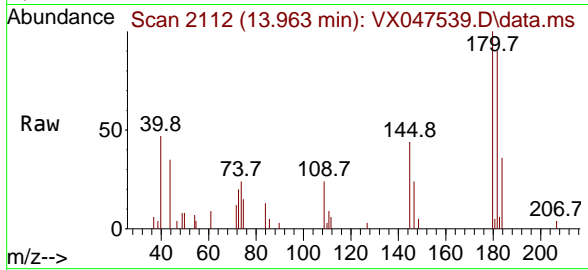
Tgt Ion:128 Resp: 4600  
 Ion Ratio Lower Upper  
 128 100  
 127 9.6 10.1 15.1#  
 129 7.5 8.7 13.1#





#96  
 1,2,3-Trichlorobenzene  
 Concen: 0.612 ug/l  
 RT: 13.963 min Scan# 21  
 Delta R.T. 0.006 min  
 Lab File: VX047539.D  
 Acq: 27 Aug 2025 14:44

Instrument :  
 MSVOA\_X  
 ClientSampleId :



Tgt Ion:180 Resp: 2425

Ion	Ratio	Lower	Upper
180	100		
182	92.9	48.0	144.2
145	37.3	17.4	52.2

