

Data Path : Z:\voasrv\HPCHEM1\MSVOA_X\Data\VX082725\
 Data File : VX047540.D
 Acq On : 27 Aug 2025 16:48
 Operator : JC/MD
 Sample : Q2971-37
 Misc : 5.0mL/MSVOA_X/WATER
 ALS Vial : 8 Sample Multiplier: 1

Instrument :
 MSVOA_X
 ClientSampleId :

Quant Time: Aug 28 01:21:04 2025
 Quant Method : Z:\voasrv\HPCHEM1\MSVOA_X\Method\82X081525W.M
 Quant Title : SW846 8260
 QLast Update : Mon Aug 18 04:18:28 2025
 Response via : Initial Calibration

Compound	R.T.	QIon	Response	Conc	Units	Dev(Min)

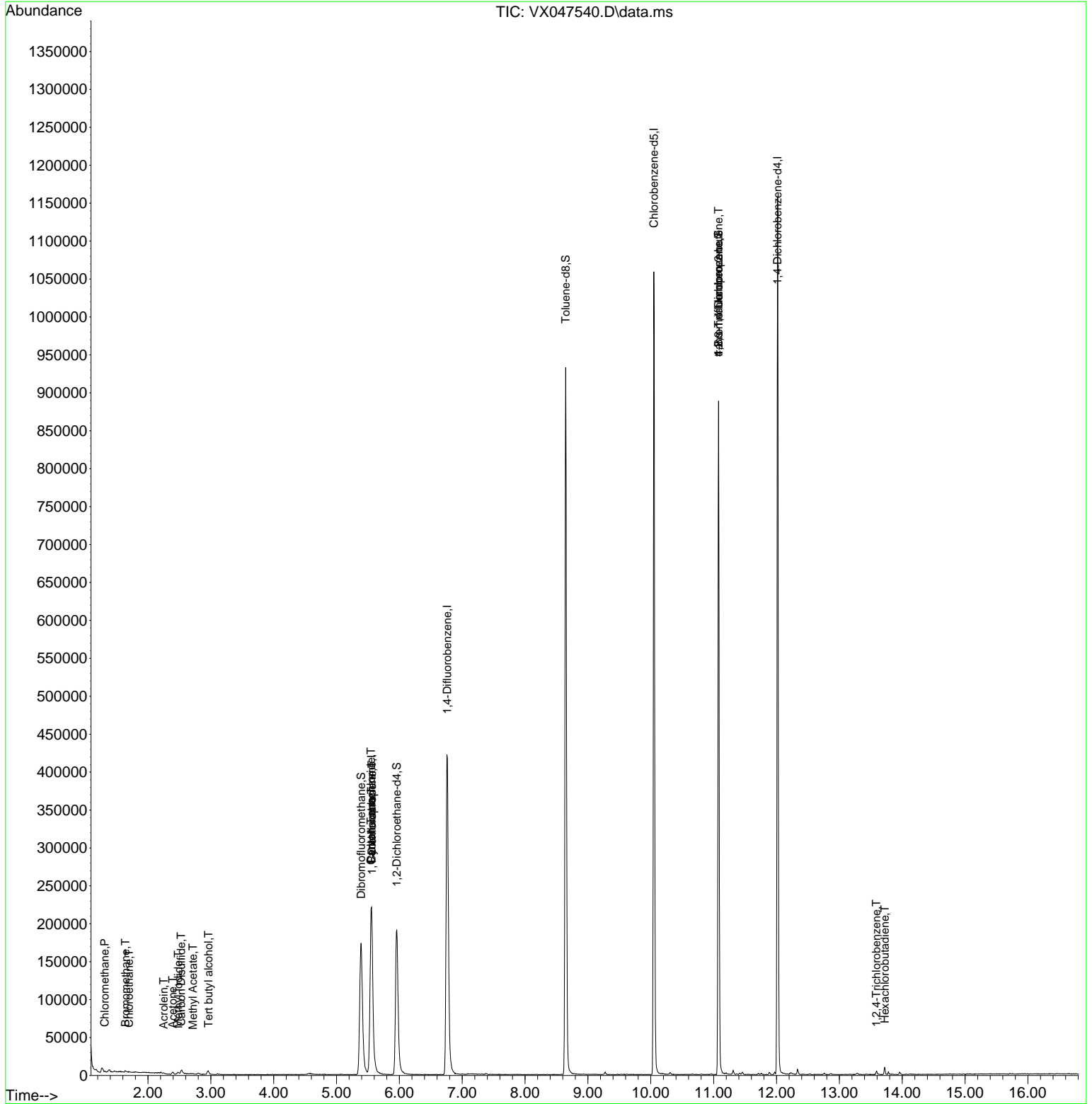
Internal Standards						
1) Pentafluorobenzene	5.556	168	226306	50.000	ug/l	-0.01
34) 1,4-Difluorobenzene	6.763	114	463642	50.000	ug/l	0.00
63) Chlorobenzene-d5	10.049	117	470057	50.000	ug/l	0.00
72) 1,4-Dichlorobenzene-d4	12.018	152	235100	50.000	ug/l	0.00
System Monitoring Compounds						
33) 1,2-Dichloroethane-d4	5.958	65	206061	65.060	ug/l	0.00
Spiked Amount	50.000	Range 78 - 117	Recovery	=	130.120%#	
35) Dibromofluoromethane	5.391	113	169284	56.258	ug/l	0.00
Spiked Amount	50.000	Range 75 - 124	Recovery	=	112.520%	
50) Toluene-d8	8.647	98	563220	52.367	ug/l	0.00
Spiked Amount	50.000	Range 92 - 112	Recovery	=	104.740%	
62) 4-Bromofluorobenzene	11.079	95	242469	61.092	ug/l	0.00
Spiked Amount	50.000	Range 83 - 123	Recovery	=	122.180%	
Target Compounds						
						Qvalue
3) Chloromethane	1.313	50	918	0.354	ug/l #	82
5) Bromomethane	1.642	94	887	0.674	ug/l	88
6) Chloroethane	1.697	64	603	0.303	ug/l #	44
10) Methyl Iodide	2.483	142	4401	0.919	ug/l #	96
11) Tert butyl alcohol	2.965	59	2210	8.021	ug/l #	72
13) Acrolein	2.251	56	145	0.249	ug/l #	37
16) Acetone	2.392	43	3940	3.310	ug/l	93
17) Carbon Disulfide	2.526	76	3510	0.408	ug/l #	94
18) Methyl Acetate	2.715	43	744	0.241	ug/l #	69
31) Cyclohexane	5.556	56	5154	1.011	ug/l #	2
36) 1,1-Dichloropropene	5.562	75	18187	3.829	ug/l #	51
38) Carbon Tetrachloride	5.550	117	23660	4.558	ug/l #	15
76) 1,2,3-Trichloropropane	11.079	75	125478	29.100	ug/l #	39
81) trans-1,4-Dichloro-2-b...	11.079	75	125478	114.459	ug/l #	7
93) 1,2,4-Trichlorobenzene	13.591	180	1451	0.266	ug/l	90
94) Hexachlorobutadiene	13.725	225	1252	0.644	ug/l	90

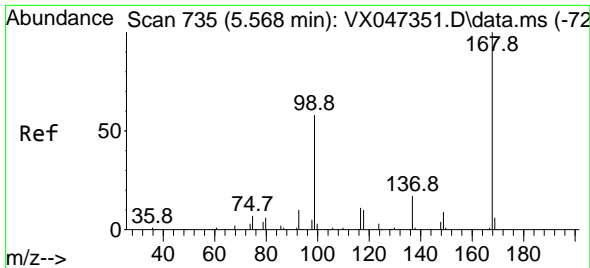
(#) = qualifier out of range (m) = manual integration (+) = signals summed

Data Path : Z:\voasrv\HPCHEM1\MSVOA_X\Data\VX082725\
 Data File : VX047540.D
 Acq On : 27 Aug 2025 16:48
 Operator : JC/MD
 Sample : Q2971-37
 Misc : 5.0mL/MSVOA_X/WATER
 ALS Vial : 8 Sample Multiplier: 1

Instrument :
 MSVOA_X
 ClientSampleId :

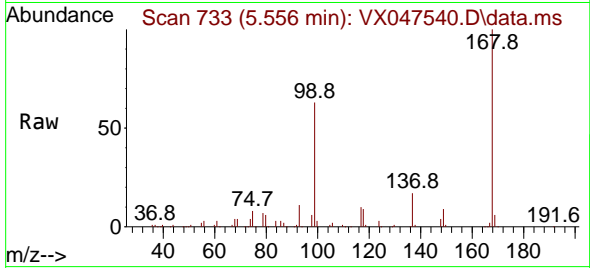
Quant Time: Aug 28 01:21:04 2025
 Quant Method : Z:\voasrv\HPCHEM1\MSVOA_X\Method\82X081525W.M
 Quant Title : SW846 8260
 QLast Update : Mon Aug 18 04:18:28 2025
 Response via : Initial Calibration



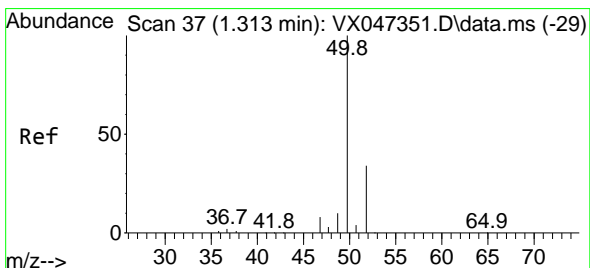
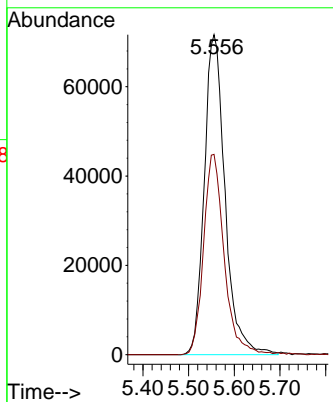
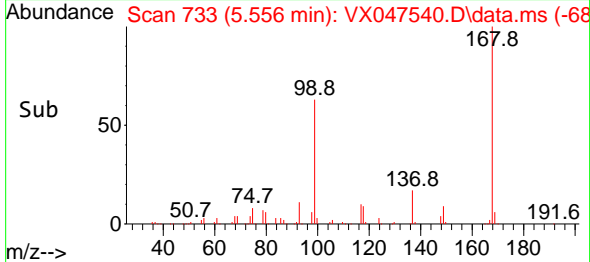


#1
 Pentafluorobenzene
 Concen: 50.000 ug/l
 RT: 5.556 min Scan# 71
 Delta R.T. -0.012 min
 Lab File: VX047540.D
 Acq: 27 Aug 2025 16:48

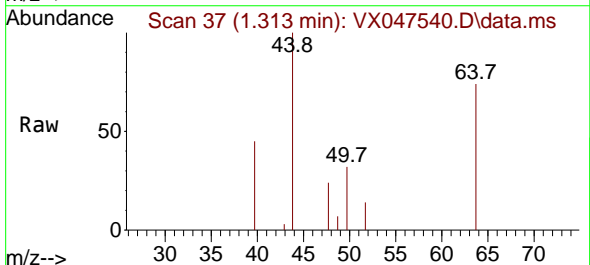
Instrument :
 MSVOA_X
 ClientSampleId :



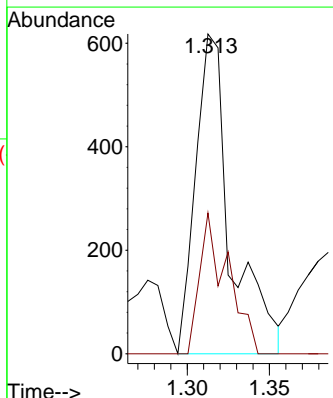
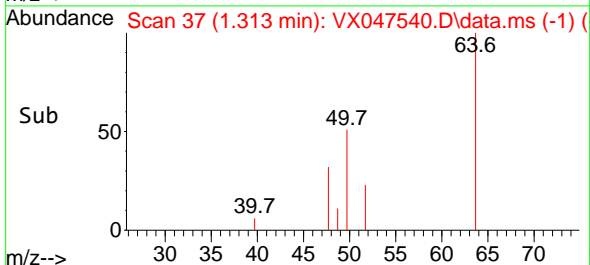
Tgt Ion:168 Resp: 226306
 Ion Ratio Lower Upper
 168 100
 99 62.6 47.9 71.9

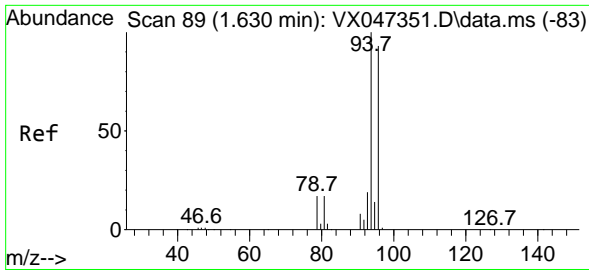


#3
 Chloromethane
 Concen: 0.354 ug/l
 RT: 1.313 min Scan# 37
 Delta R.T. 0.000 min
 Lab File: VX047540.D
 Acq: 27 Aug 2025 16:48



Tgt Ion: 50 Resp: 918
 Ion Ratio Lower Upper
 50 100
 52 44.0 27.0 40.4#

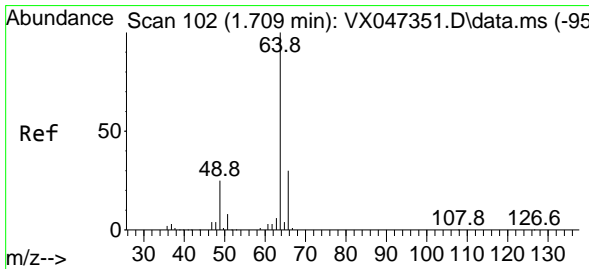
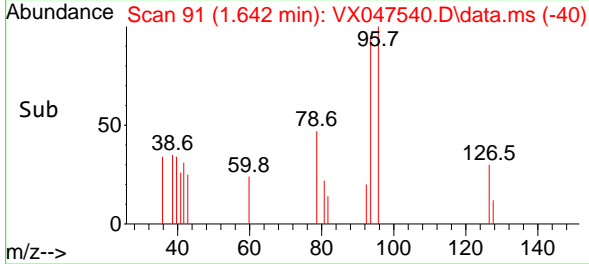
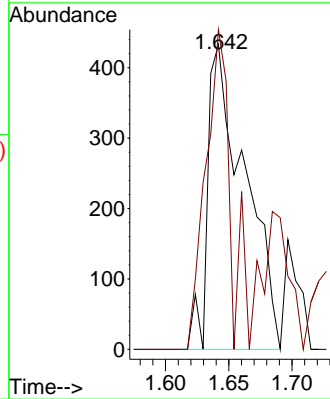
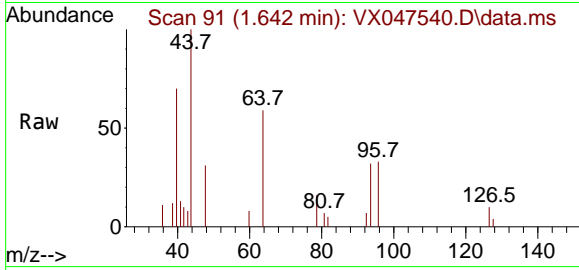




#5
 Bromomethane
 Concen: 0.674 ug/l
 RT: 1.642 min Scan# 91
 Delta R.T. 0.012 min
 Lab File: VX047540.D
 Acq: 27 Aug 2025 16:48

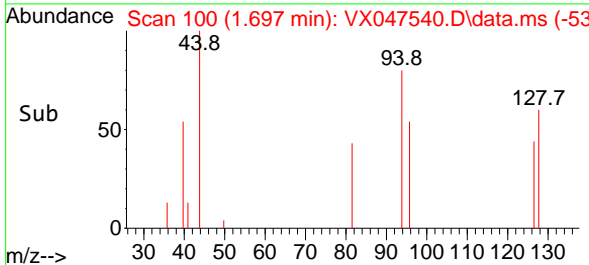
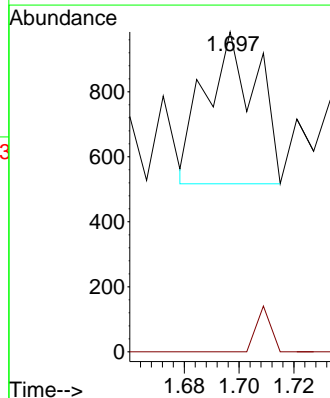
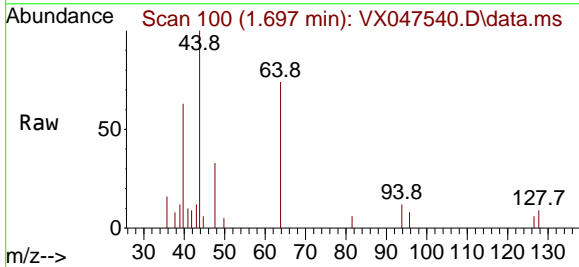
Instrument :
 MSVOA_X
 ClientSampleId :

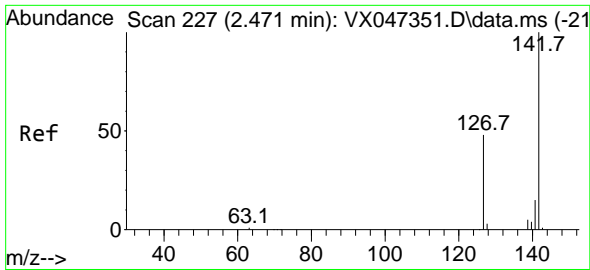
Tgt Ion: 94 Resp: 887
 Ion Ratio Lower Upper
 94 100
 96 104.8 74.7 112.1



#6
 Chloroethane
 Concen: 0.303 ug/l
 RT: 1.697 min Scan# 100
 Delta R.T. -0.012 min
 Lab File: VX047540.D
 Acq: 27 Aug 2025 16:48

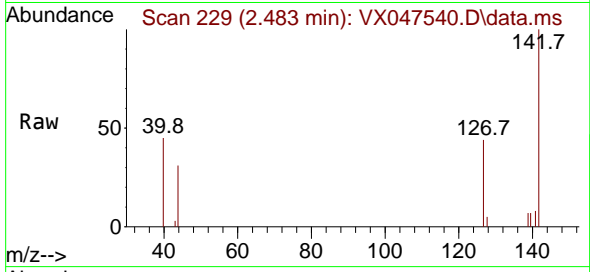
Tgt Ion: 64 Resp: 603
 Ion Ratio Lower Upper
 64 100
 66 0.0 24.4 36.6#



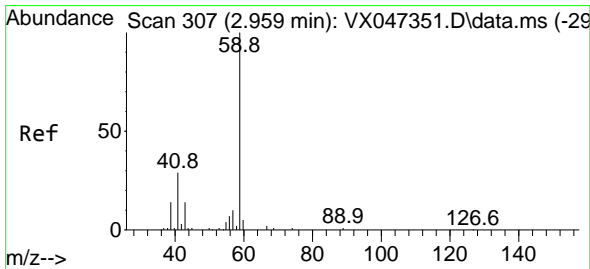
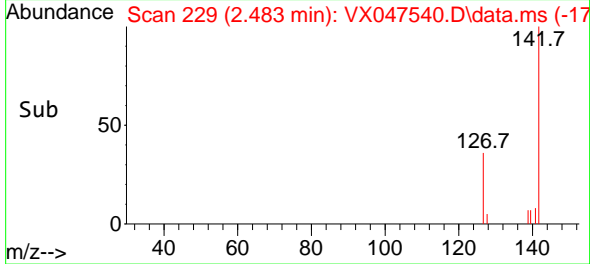
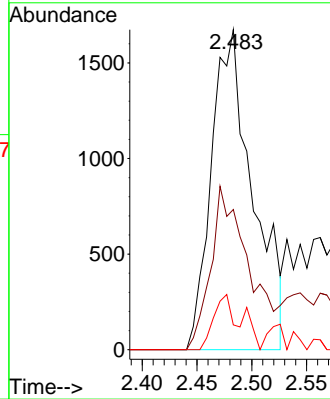


#10
 Methyl Iodide
 Concen: 0.919 ug/l
 RT: 2.483 min Scan# 211
 Delta R.T. 0.012 min
 Lab File: VX047540.D
 Acq: 27 Aug 2025 16:48

Instrument : MSVOA_X
 ClientSampleId :

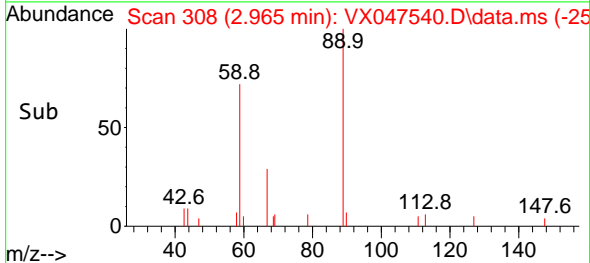
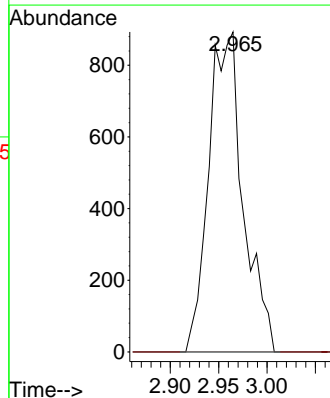
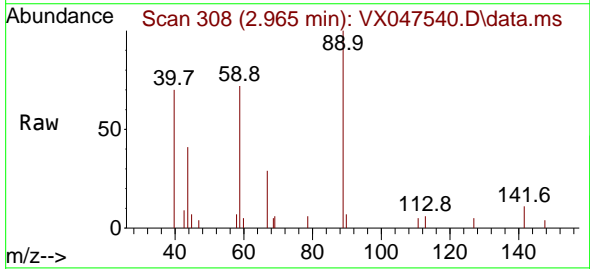


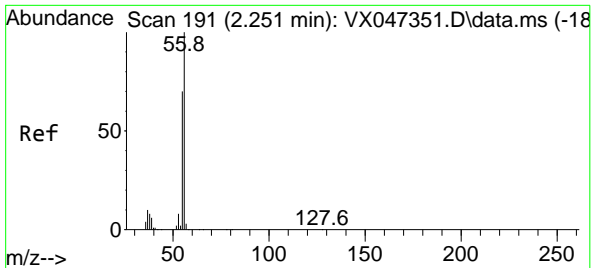
Tgt Ion:142 Resp: 4401
 Ion Ratio Lower Upper
 142 100
 127 46.1 36.1 54.1
 141 8.5 11.1 16.7#



#11
 Tert butyl alcohol
 Concen: 8.021 ug/l
 RT: 2.965 min Scan# 308
 Delta R.T. 0.006 min
 Lab File: VX047540.D
 Acq: 27 Aug 2025 16:48

Tgt Ion: 59 Resp: 2210
 Ion Ratio Lower Upper
 59 100
 57 0.0 8.3 12.5#

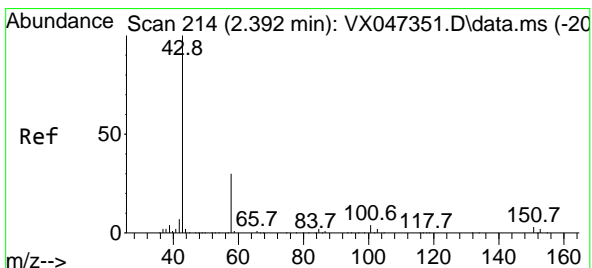
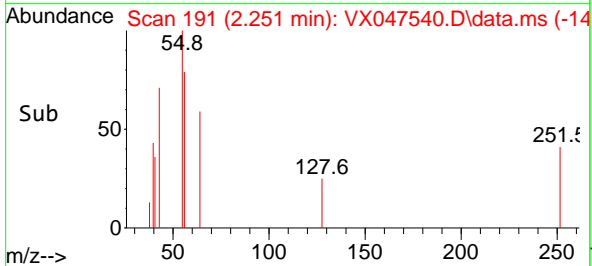
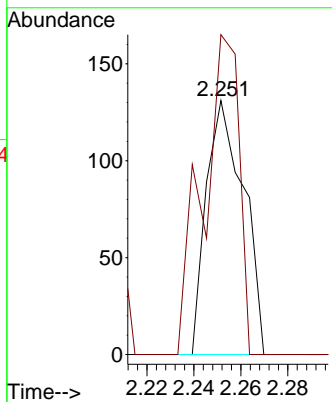
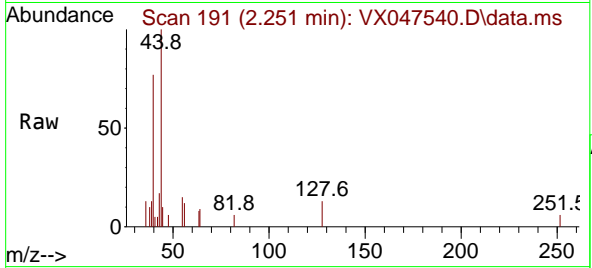




#13
 Acrolein
 Concen: 0.249 ug/l
 RT: 2.251 min Scan# 191
 Delta R.T. 0.000 min
 Lab File: VX047540.D
 Acq: 27 Aug 2025 16:48

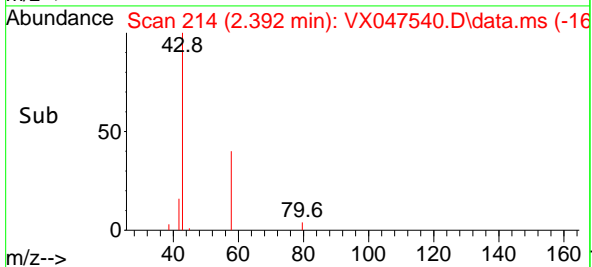
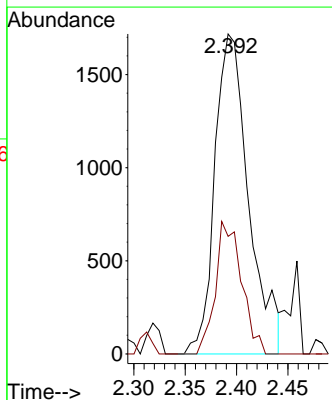
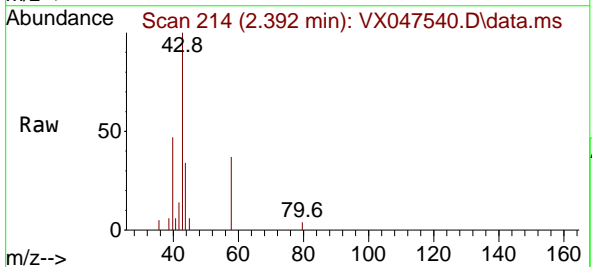
Instrument : MSVOA_X
 ClientSampleId :

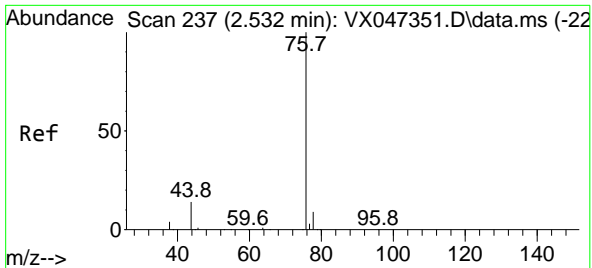
Tgt Ion: 56 Resp: 145
 Ion Ratio Lower Upper
 56 100
 55 120.7 55.5 83.3#



#16
 Acetone
 Concen: 3.310 ug/l
 RT: 2.392 min Scan# 214
 Delta R.T. 0.000 min
 Lab File: VX047540.D
 Acq: 27 Aug 2025 16:48

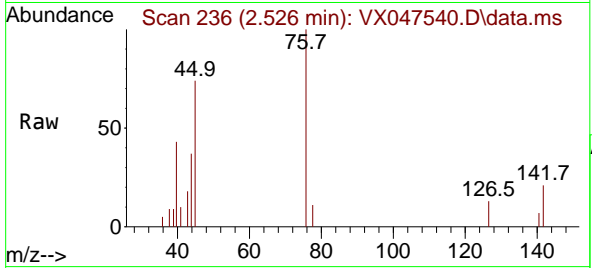
Tgt Ion: 43 Resp: 3940
 Ion Ratio Lower Upper
 43 100
 58 27.4 24.8 37.2



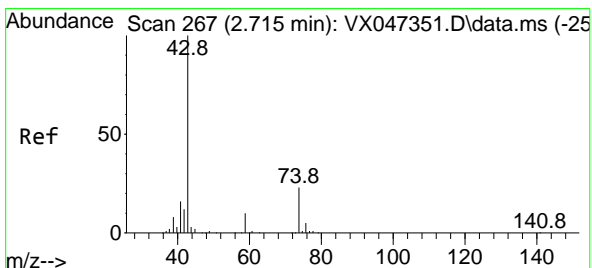
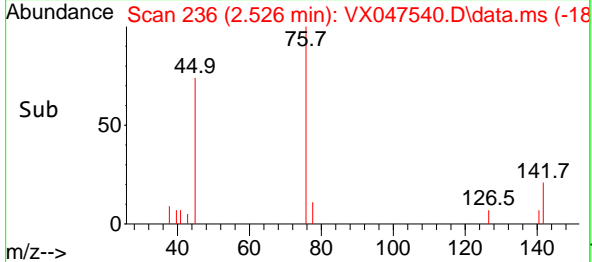
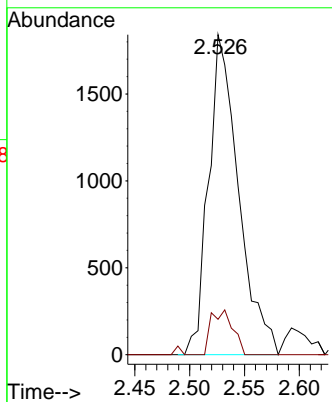


#17
 Carbon Disulfide
 Concen: 0.408 ug/l
 RT: 2.526 min Scan# 21
 Delta R.T. -0.006 min
 Lab File: VX047540.D
 Acq: 27 Aug 2025 16:48

Instrument : MSVOA_X
 ClientSampleId :

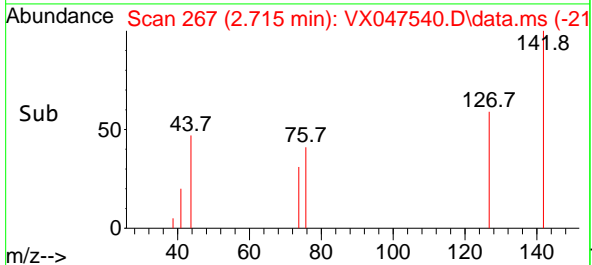
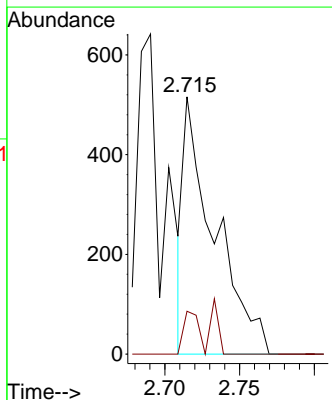
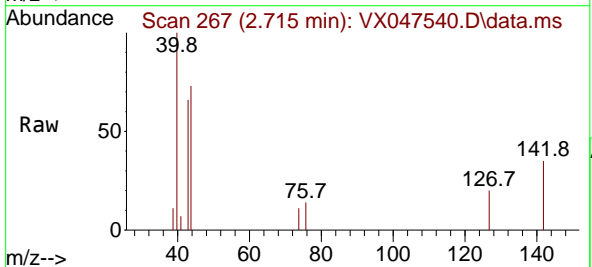


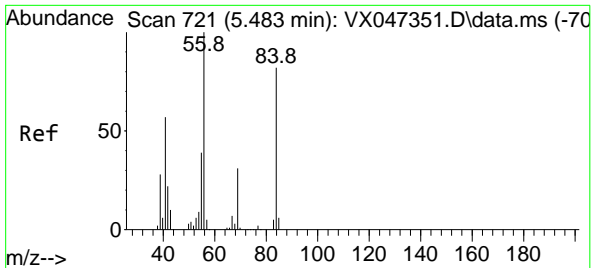
Tgt Ion: 76 Resp: 3510
 Ion Ratio Lower Upper
 76 100
 78 11.1 7.2 10.8#



#18
 Methyl Acetate
 Concen: 0.241 ug/l
 RT: 2.715 min Scan# 267
 Delta R.T. 0.000 min
 Lab File: VX047540.D
 Acq: 27 Aug 2025 16:48

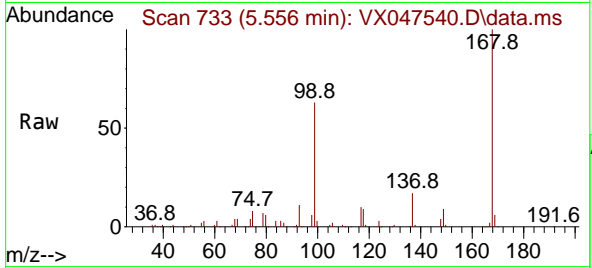
Tgt Ion: 43 Resp: 744
 Ion Ratio Lower Upper
 43 100
 74 8.1 18.4 27.6#



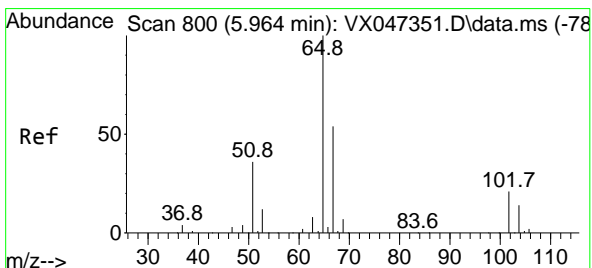
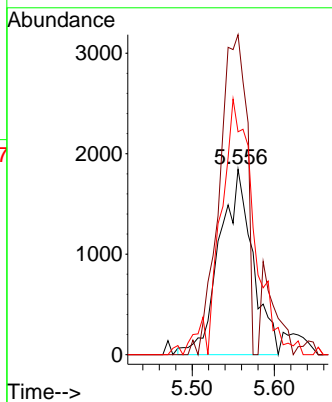
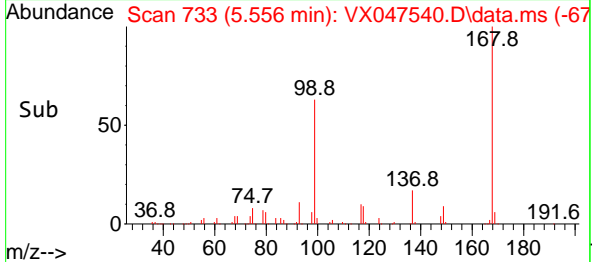


#31
 Cyclohexane
 Concen: 1.011 ug/l
 RT: 5.556 min Scan# 711
 Delta R.T. 0.073 min
 Lab File: VX047540.D
 Acq: 27 Aug 2025 16:48

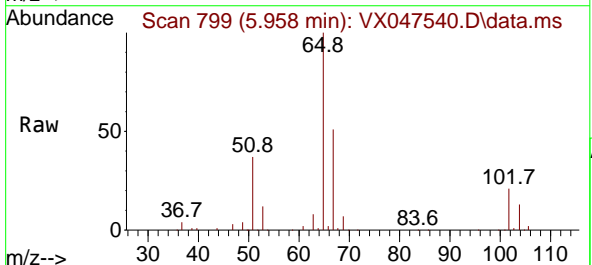
Instrument :
 MSVOA_X
 ClientSampleId :



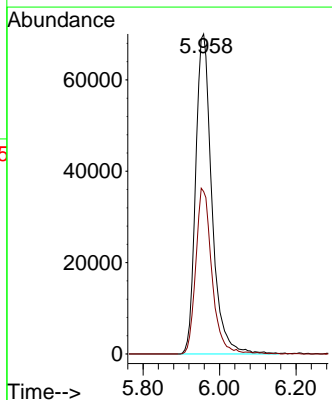
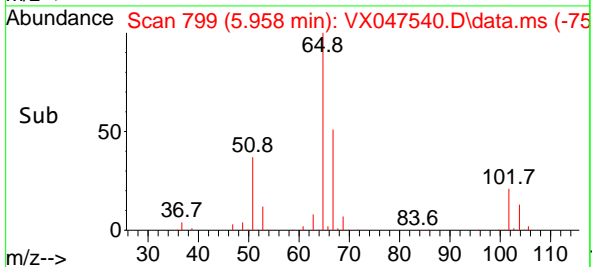
Tgt Ion: 56 Resp: 5154
 Ion Ratio Lower Upper
 56 100
 69 172.6 24.3 36.5#
 84 115.3 65.3 97.9#

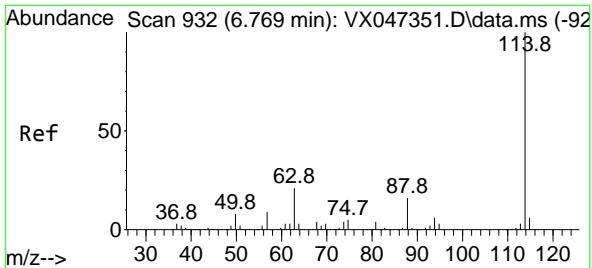


#33
 1,2-Dichloroethane-d4
 Concen: 65.060 ug/l
 RT: 5.958 min Scan# 799
 Delta R.T. -0.006 min
 Lab File: VX047540.D
 Acq: 27 Aug 2025 16:48



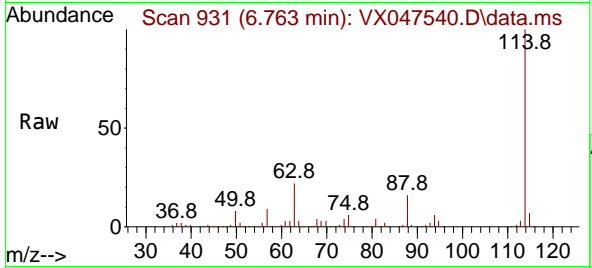
Tgt Ion: 65 Resp: 206061
 Ion Ratio Lower Upper
 65 100
 67 51.3 0.0 106.0



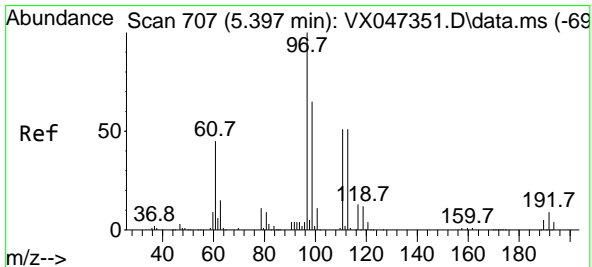
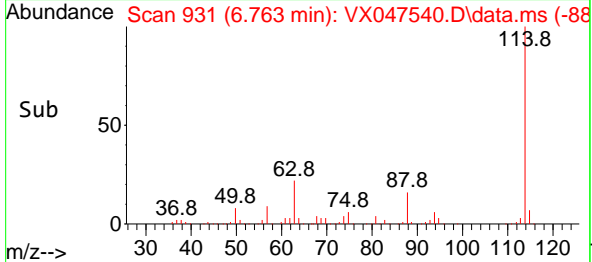
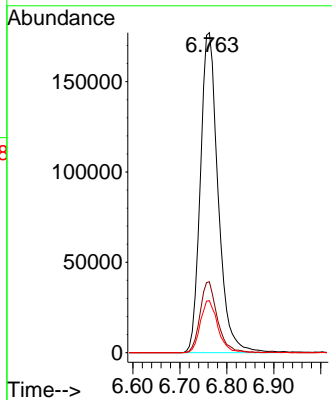


#34
 1,4-Difluorobenzene
 Concen: 50.000 ug/l
 RT: 6.763 min Scan# 91
 Delta R.T. -0.006 min
 Lab File: VX047540.D
 Acq: 27 Aug 2025 16:48

Instrument :
 MSVOA_X
 ClientSampleId :

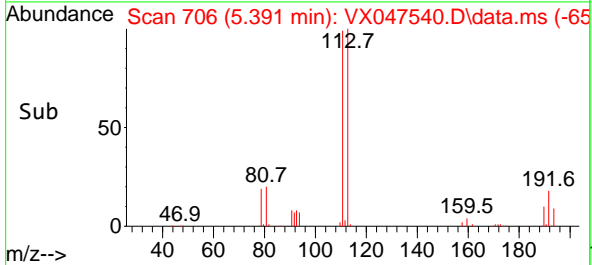
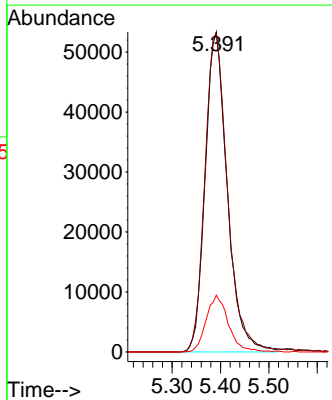
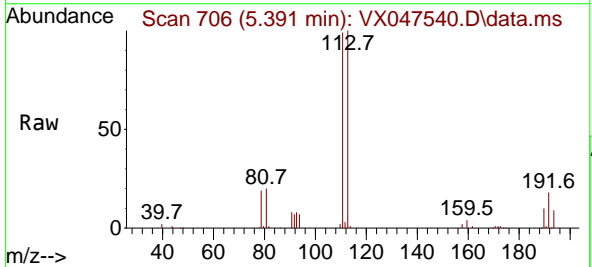


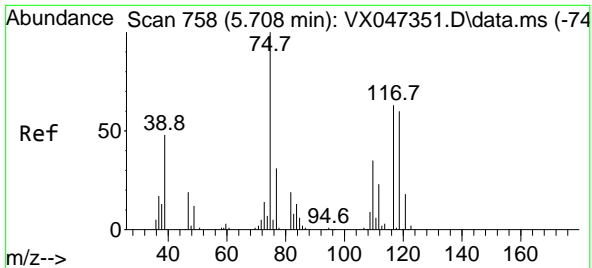
Tgt Ion:114 Resp: 463642
 Ion Ratio Lower Upper
 114 100
 63 22.1 0.0 42.4
 88 16.2 0.0 33.0



#35
 Dibromofluoromethane
 Concen: 56.258 ug/l
 RT: 5.391 min Scan# 706
 Delta R.T. -0.006 min
 Lab File: VX047540.D
 Acq: 27 Aug 2025 16:48

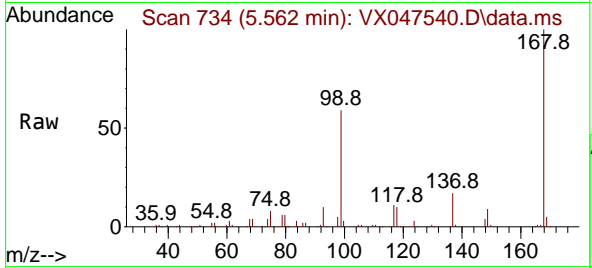
Tgt Ion:113 Resp: 169284
 Ion Ratio Lower Upper
 113 100
 111 102.3 81.4 122.2
 192 17.8 14.1 21.1



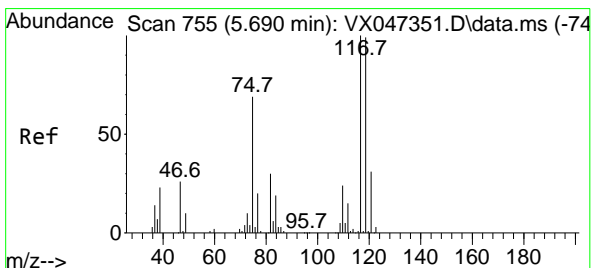
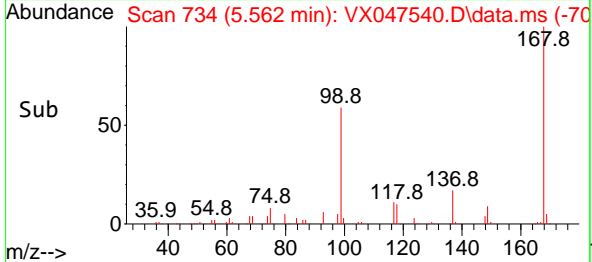
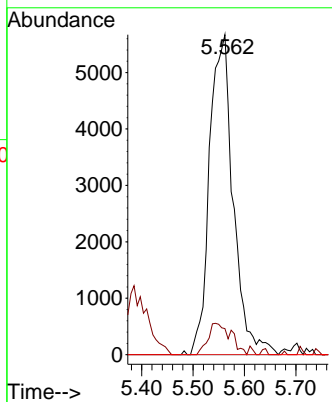


#36
 1,1-Dichloropropene
 Concen: 3.829 ug/l
 RT: 5.562 min Scan# 711
 Delta R.T. -0.146 min
 Lab File: VX047540.D
 Acq: 27 Aug 2025 16:48

Instrument :
 MSVOA_X
 ClientSampleId :

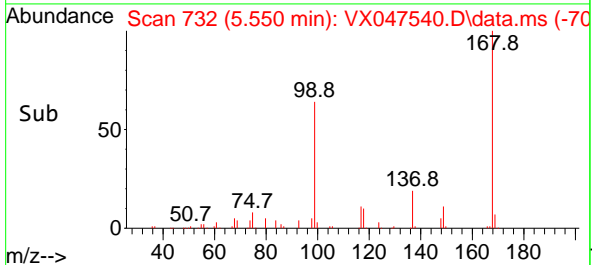
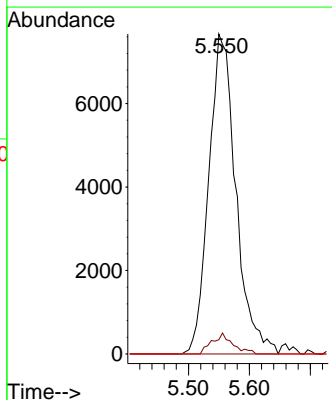
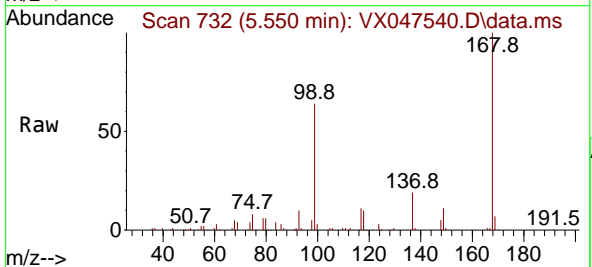


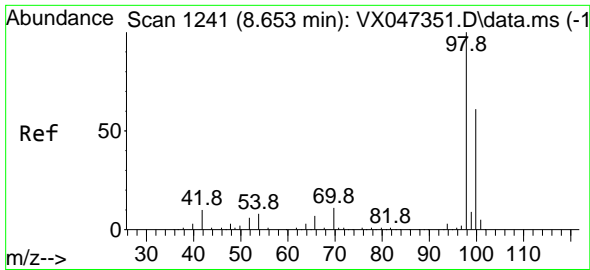
Tgt Ion: 75 Resp: 18187
 Ion Ratio Lower Upper
 75 100
 110 9.5 17.4 52.2#
 77 0.0 24.4 36.6#



#38
 Carbon Tetrachloride
 Concen: 4.558 ug/l
 RT: 5.550 min Scan# 732
 Delta R.T. -0.140 min
 Lab File: VX047540.D
 Acq: 27 Aug 2025 16:48

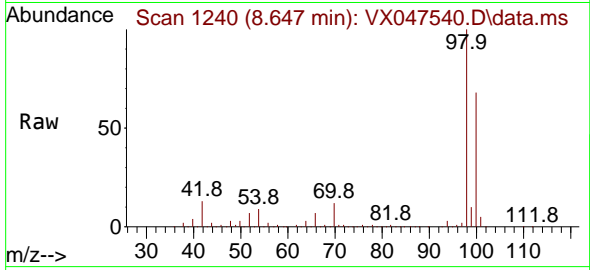
Tgt Ion: 117 Resp: 23660
 Ion Ratio Lower Upper
 117 100
 119 4.5 78.5 117.7#
 121 0.0 24.7 37.1#



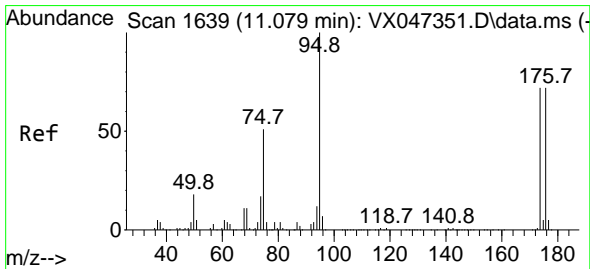
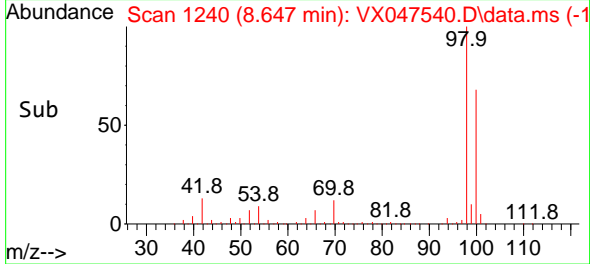
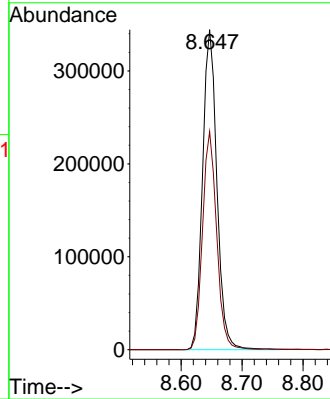


#50
 Toluene-d8
 Concen: 52.367 ug/l
 RT: 8.647 min Scan# 11
 Delta R.T. -0.006 min
 Lab File: VX047540.D
 Acq: 27 Aug 2025 16:48

Instrument :
 MSVOA_X
 ClientSampleId :

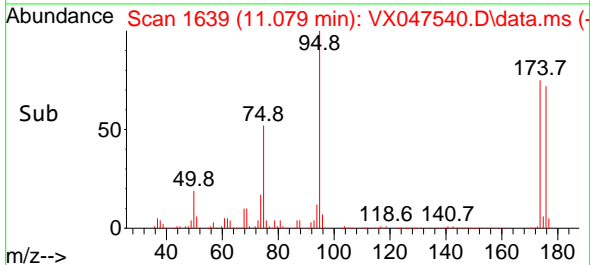
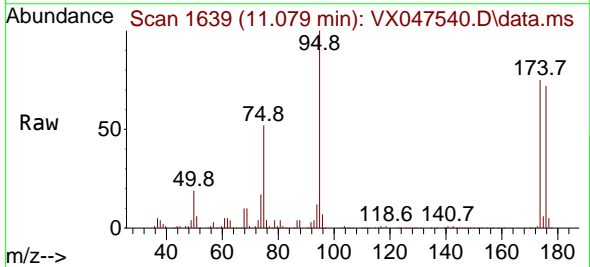
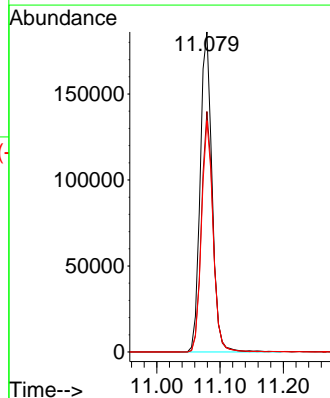


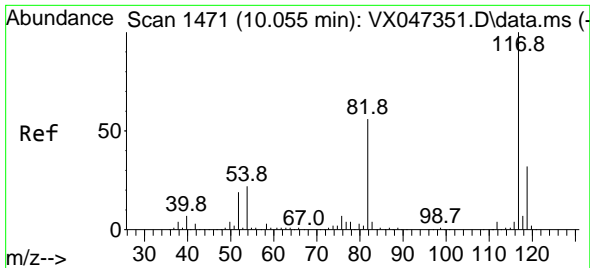
Tgt Ion: 98 Resp: 563220
 Ion Ratio Lower Upper
 98 100
 100 67.3 53.9 80.9



#62
 4-Bromofluorobenzene
 Concen: 61.092 ug/l
 RT: 11.079 min Scan# 1639
 Delta R.T. 0.000 min
 Lab File: VX047540.D
 Acq: 27 Aug 2025 16:48

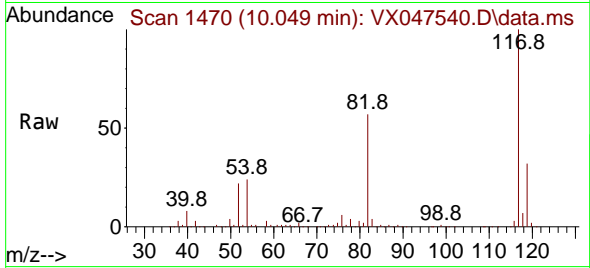
Tgt Ion: 95 Resp: 242469
 Ion Ratio Lower Upper
 95 100
 174 73.2 0.0 148.0
 176 70.7 0.0 145.4



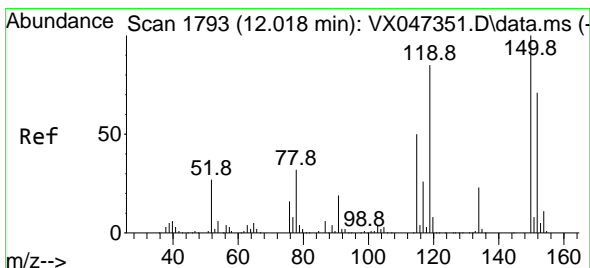
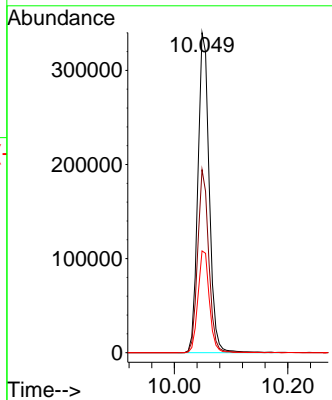
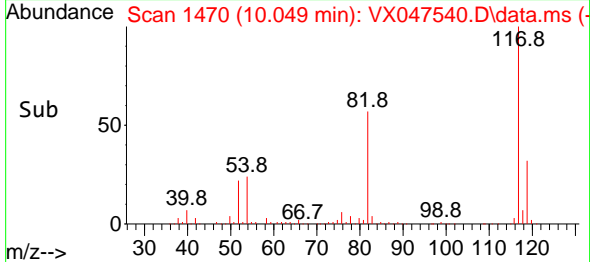


#63
 Chlorobenzene-d5
 Concen: 50.000 ug/l
 RT: 10.049 min Scan# 1470
 Delta R.T. -0.006 min
 Lab File: VX047540.D
 Acq: 27 Aug 2025 16:48

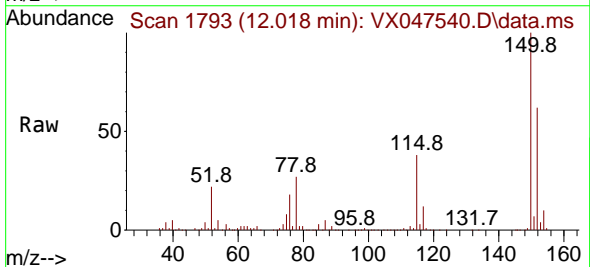
Instrument :
 MSVOA_X
 ClientSampleId :



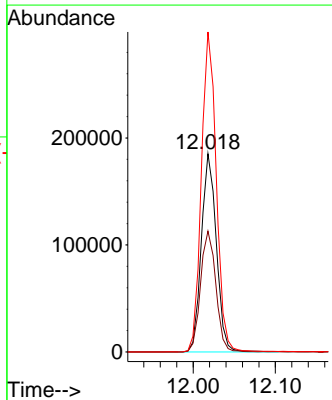
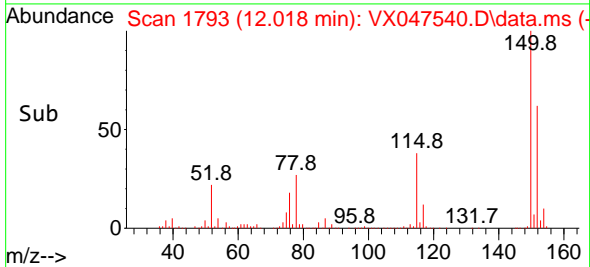
Tgt Ion:117 Resp: 470057
 Ion Ratio Lower Upper
 117 100
 82 57.2 45.0 67.4
 119 31.8 25.8 38.8

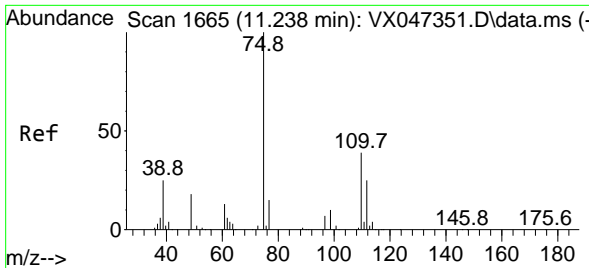


#72
 1,4-Dichlorobenzene-d4
 Concen: 50.000 ug/l
 RT: 12.018 min Scan# 1793
 Delta R.T. 0.000 min
 Lab File: VX047540.D
 Acq: 27 Aug 2025 16:48



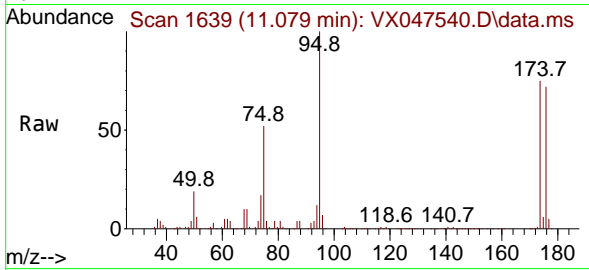
Tgt Ion:152 Resp: 235100
 Ion Ratio Lower Upper
 152 100
 115 62.2 44.6 133.8
 150 160.9 0.0 349.8



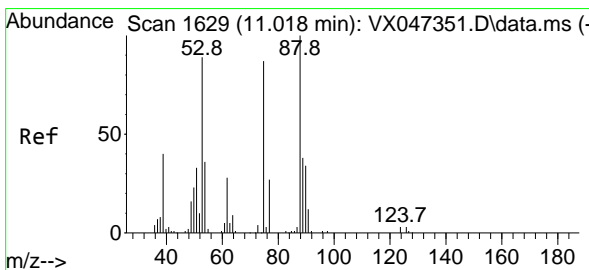
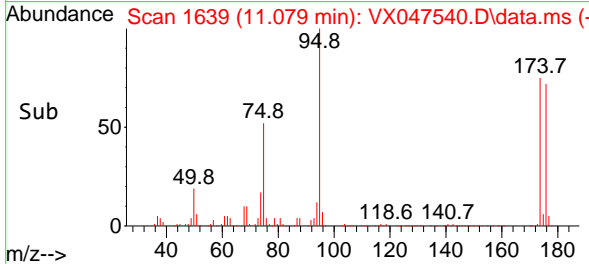
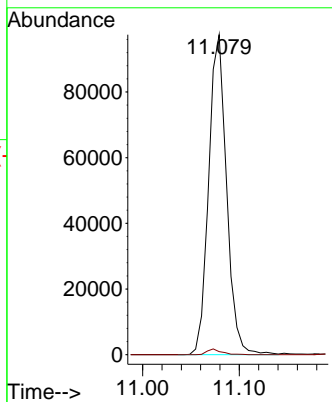


#76
 1,2,3-Trichloropropane
 Concen: 29.100 ug/l
 RT: 11.079 min Scan# 1639
 Delta R.T. -0.159 min
 Lab File: VX047540.D
 Acq: 27 Aug 2025 16:48

Instrument : MSVOA_X
 ClientSampleId :

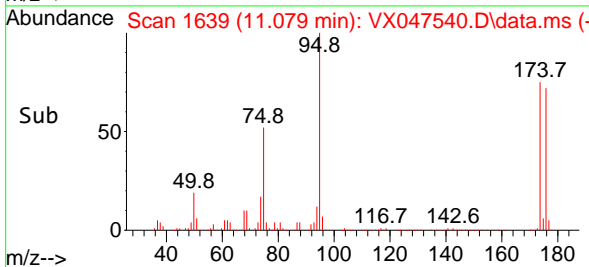
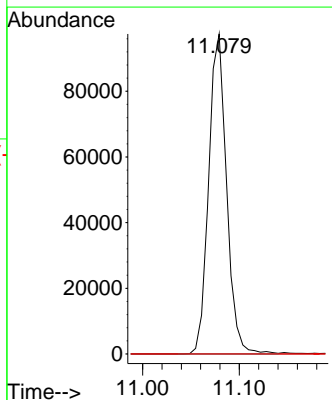
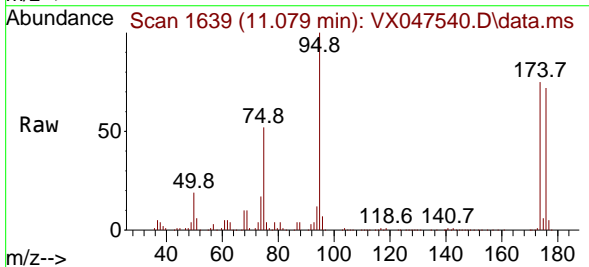


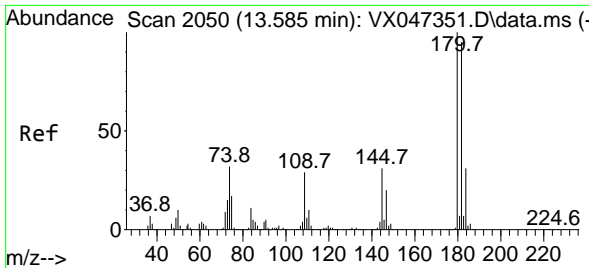
Tgt Ion: 75 Resp: 125478
 Ion Ratio Lower Upper
 75 100
 77 1.4 19.4 58.2#



#81
 trans-1,4-Dichloro-2-butene
 Concen: 114.459 ug/l
 RT: 11.079 min Scan# 1639
 Delta R.T. 0.061 min
 Lab File: VX047540.D
 Acq: 27 Aug 2025 16:48

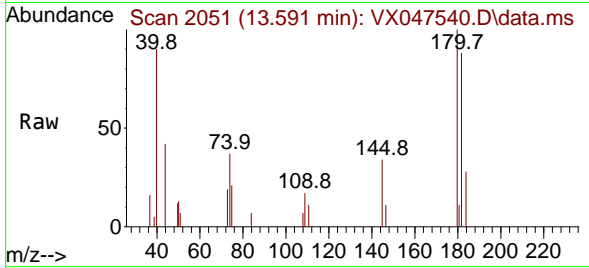
Tgt Ion: 75 Resp: 125478
 Ion Ratio Lower Upper
 75 100
 53 0.0 85.2 127.8#
 89 0.0 36.7 55.1#



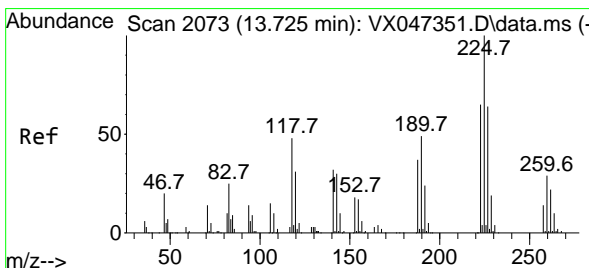
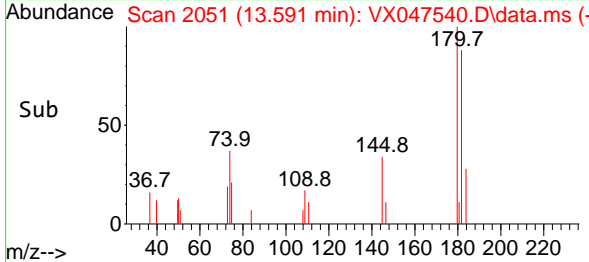
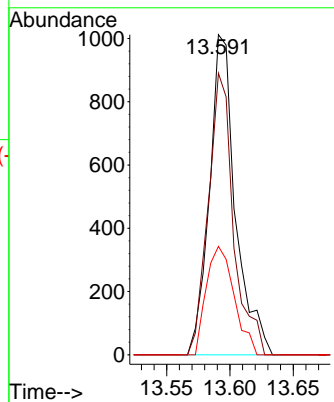


#93
 1,2,4-Trichlorobenzene
 Concen: 0.266 ug/l
 RT: 13.591 min Scan# 2051
 Delta R.T. 0.006 min
 Lab File: VX047540.D
 Acq: 27 Aug 2025 16:48

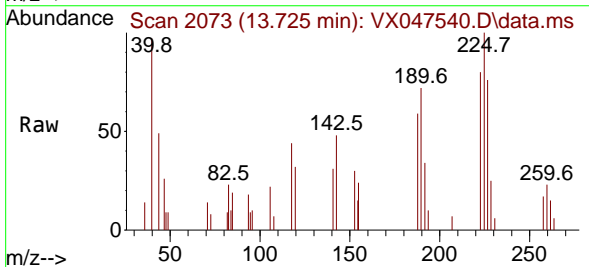
Instrument :
 MSVOA_X
 ClientSampleId :



Tgt Ion:180 Resp: 1451
 Ion Ratio Lower Upper
 180 100
 182 85.0 48.1 144.4
 145 36.0 16.2 48.5



#94
 Hexachlorobutadiene
 Concen: 0.644 ug/l
 RT: 13.725 min Scan# 2073
 Delta R.T. 0.000 min
 Lab File: VX047540.D
 Acq: 27 Aug 2025 16:48



Tgt Ion:225 Resp: 1252
 Ion Ratio Lower Upper
 225 100
 223 76.6 32.2 96.6
 227 59.7 31.6 95.0

