

Data Path : Z:\voasrv\HPCHEM1\MSVOA_X\Data\VX082923\
 Data File : VX037363.D
 Acq On : 30 Aug 2023 02:21
 Operator : JC/MD
 Sample : 04196-18
 Misc : 5.0mL/MSVOA_X/WATER
 ALS Vial : 41 Sample Multiplier: 1

Instrument :
 MSVOA_X
 ClientSampleId :

Quant Time: Aug 30 03:48:57 2023
 Quant Method : Z:\voasrv\HPCHEM1\MSVOA_X\Method\82X081723W.M
 Quant Title : SW846 8260
 QLast Update : Fri Aug 18 09:30:38 2023
 Response via : Initial Calibration

Compound	R.T.	QIon	Response	Conc	Units	Dev(Min)

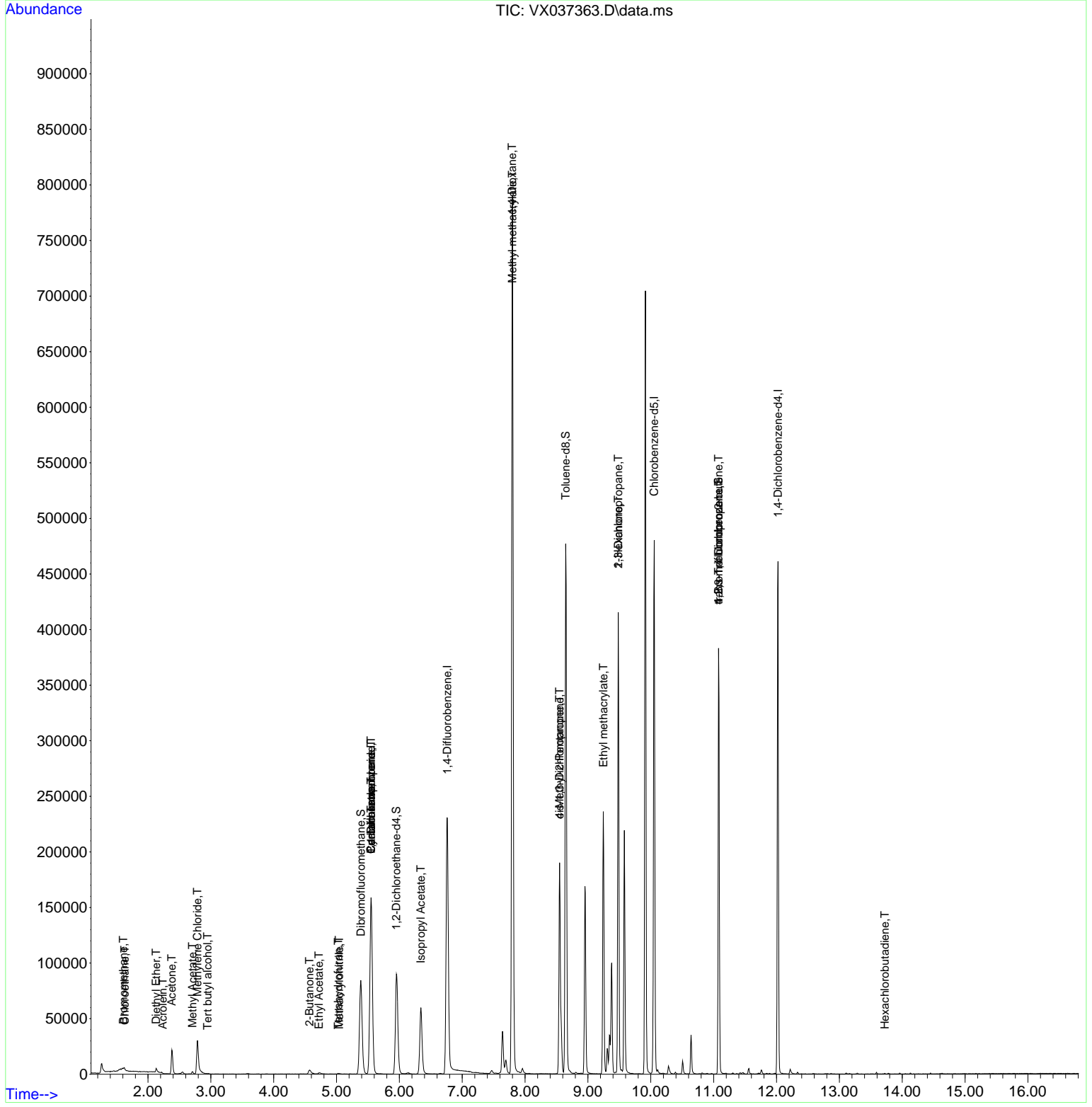
Internal Standards						
1) Pentafluorobenzene	5.550	168	148513	50.000	ug/l	0.00
34) 1,4-Difluorobenzene	6.763	114	244618	50.000	ug/l	0.00
63) Chlorobenzene-d5	10.055	117	221827	50.000	ug/l	0.00
72) 1,4-Dichlorobenzene-d4	12.024	152	98010	50.000	ug/l	0.00
System Monitoring Compounds						
33) 1,2-Dichloroethane-d4	5.952	65	91254	42.621	ug/l	0.00
Spiked Amount	50.000	Range 78 - 117	Recovery =	85.240%		
35) Dibromofluoromethane	5.385	113	75052	46.327	ug/l	0.00
Spiked Amount	50.000	Range 75 - 124	Recovery =	92.660%		
50) Toluene-d8	8.647	98	289943	49.339	ug/l	0.00
Spiked Amount	50.000	Range 92 - 112	Recovery =	98.680%		
62) 4-Bromofluorobenzene	11.079	95	106124	45.953	ug/l	0.00
Spiked Amount	50.000	Range 83 - 123	Recovery =	91.900%		
Target Compounds						
						Qvalue
5) Bromomethane	1.605	94	217	0.265	ug/l #	59
6) Chloroethane	1.630	64	453	0.469	ug/l #	43
8) Diethyl Ether	2.130	74	1072	1.030	ug/l	82
11) Tert butyl alcohol	2.947	59	531	1.057	ug/l #	78
13) Acrolein	2.233	56	103	0.270	ug/l #	47
16) Acetone	2.380	43	23084	27.559	ug/l	91
18) Methyl Acetate	2.709	43	2537	0.804	ug/l	92
20) Methylene Chloride	2.788	84	18635	9.948	ug/l	84
25) 2-Butanone	4.568	43	7393	5.862	ug/l	94
29) Tetrahydrofuran	5.026	42	198	0.246	ug/l #	71
31) Cyclohexane	5.550	56	2848	1.183	ug/l #	1
36) 1,1-Dichloropropene	5.550	75	11318	4.917	ug/l #	52
37) Ethyl Acetate	4.721	43	1597	0.679	ug/l #	87
38) Carbon Tetrachloride	5.550	117	15469	6.187	ug/l #	15
41) Methacrylonitrile	5.044	41	302	0.247	ug/l #	25
43) Isopropyl Acetate	6.342	43	79291	21.242	ug/l #	92
48) Methyl methacrylate	7.799	41	64869	35.635	ug/l #	46
49) 1,4-Dioxane	7.793	88	66	1.346	ug/l #	1
51) 4-Methyl-2-Pentanone	8.549	43	76127	33.586	ug/l #	37
54) cis-1,3-Dichloropropene	8.549	75	32539	11.515	ug/l #	51
56) Ethyl methacrylate	9.244	69	633	0.228	ug/l #	1
57) 1,3-Dichloropropane	9.482	76	3845	1.284	ug/l #	42
59) 2-Hexanone	9.482	43	43733	25.305	ug/l #	56
76) 1,2,3-Trichloropropane	11.079	75	52155	24.987	ug/l #	39
81) trans-1,4-Dichloro-2-b...	11.079	75	52155	69.790	ug/l #	5
94) Hexachlorobutadiene	13.725	225	147	0.204	ug/l #	57

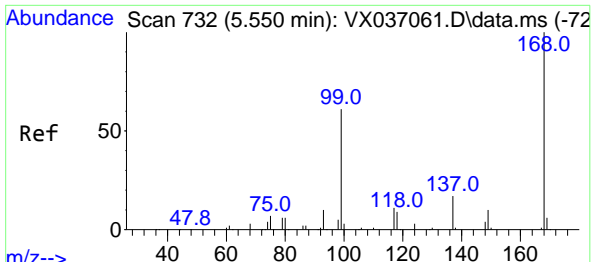
(#) = qualifier out of range (m) = manual integration (+) = signals summed

Data Path : Z:\voasrv\HPCHEM1\MSVOA_X\Data\VX082923\
 Data File : VX037363.D
 Acq On : 30 Aug 2023 02:21
 Operator : JC/MD
 Sample : 04196-18
 Misc : 5.0mL/MSVOA_X/WATER
 ALS Vial : 41 Sample Multiplier: 1

Instrument :
 MSVOA_X
 ClientSampleId :

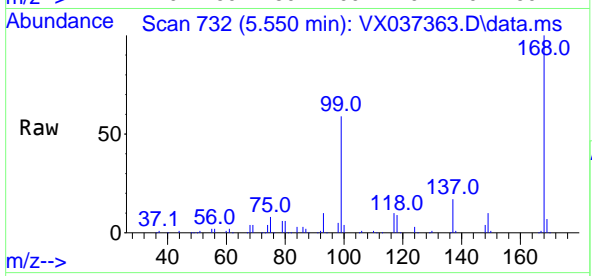
Quant Time: Aug 30 03:48:57 2023
 Quant Method : Z:\voasrv\HPCHEM1\MSVOA_X\Method\82X081723W.M
 Quant Title : SW846 8260
 QLast Update : Fri Aug 18 09:30:38 2023
 Response via : Initial Calibration



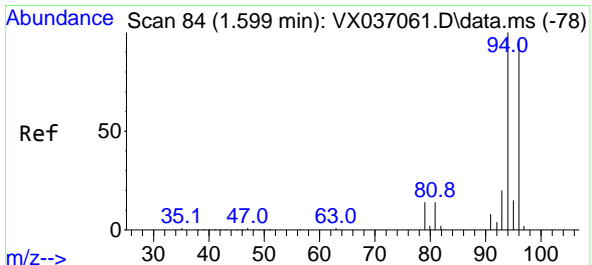
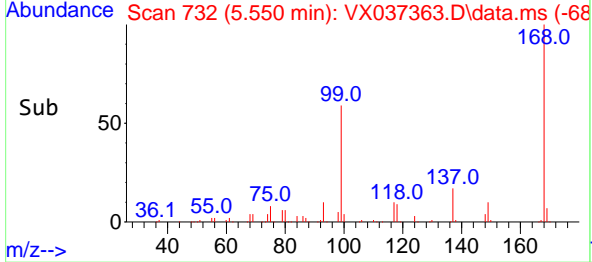
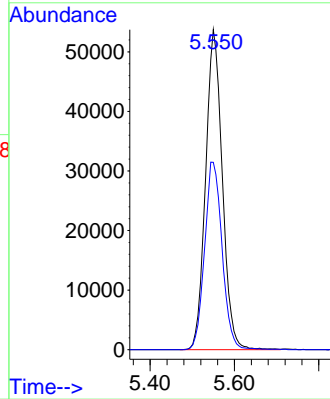


#1
 Pentafluorobenzene
 Concen: 50.000 ug/l
 RT: 5.550 min Scan# 71
 Delta R.T. -0.000 min
 Lab File: VX037363.D
 Acq: 30 Aug 2023 02:21

Instrument :
 MSVOA_X
 ClientSampleId :

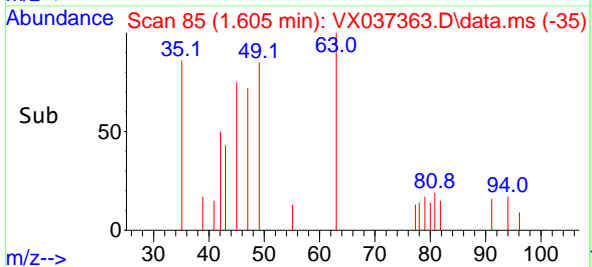
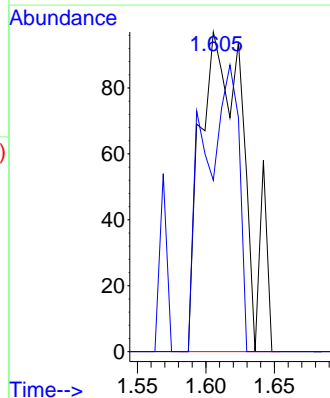
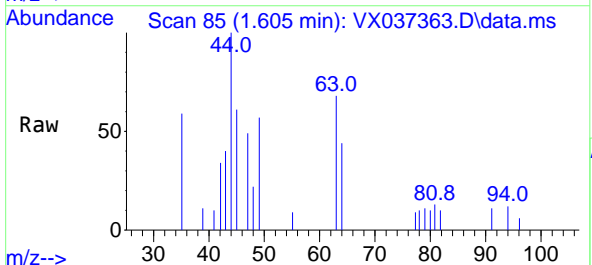


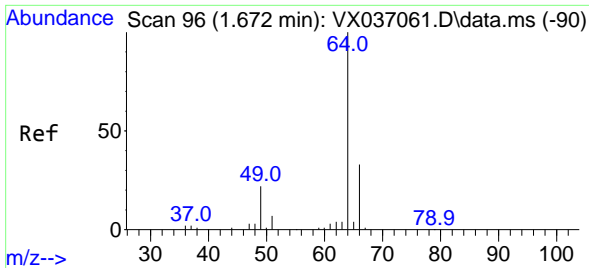
Tgt Ion:168 Resp: 148513
 Ion Ratio Lower Upper
 168 100
 99 58.5 56.6 85.0



#5
 Bromomethane
 Concen: 0.265 ug/l
 RT: 1.605 min Scan# 85
 Delta R.T. 0.006 min
 Lab File: VX037363.D
 Acq: 30 Aug 2023 02:21

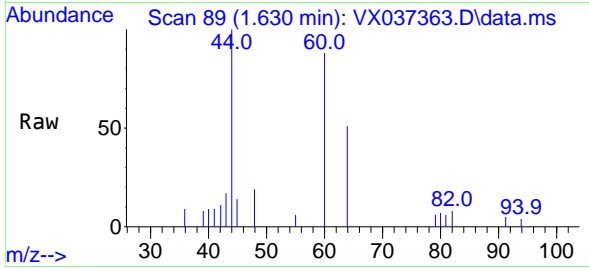
Tgt Ion: 94 Resp: 217
 Ion Ratio Lower Upper
 94 100
 96 53.6 74.6 111.8#



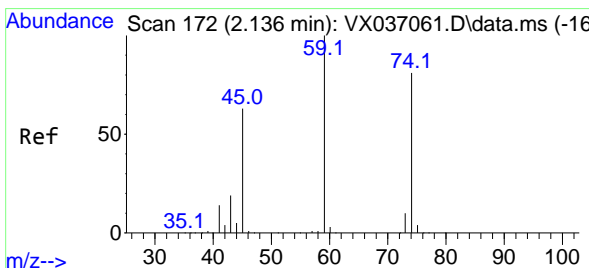
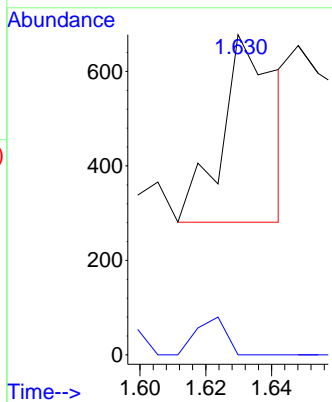
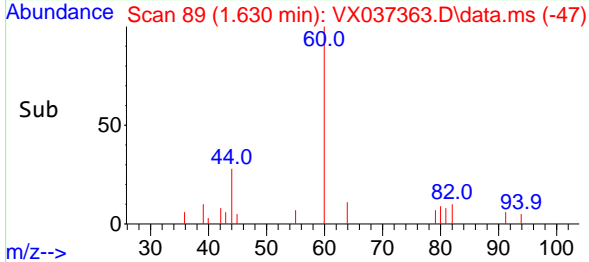


#6
 Chloroethane
 Concen: 0.469 ug/l
 RT: 1.630 min Scan# 89
 Delta R.T. -0.042 min
 Lab File: VX037363.D
 Acq: 30 Aug 2023 02:21

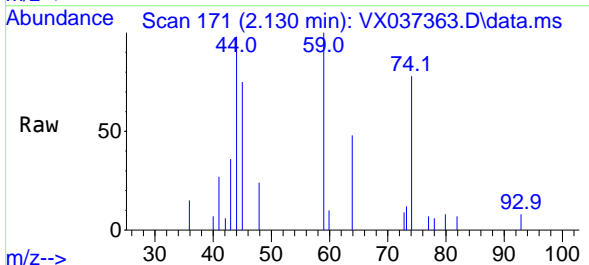
Instrument : MSVOA_X
 ClientSampleId :



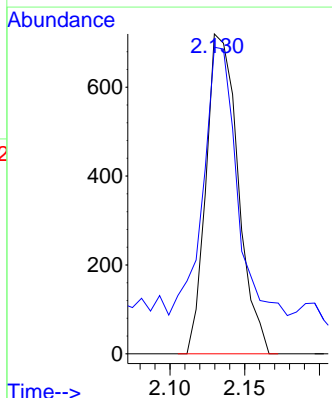
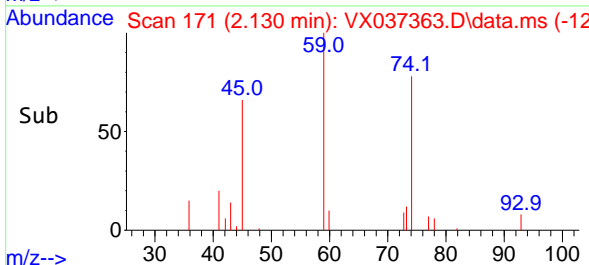
Tgt Ion: 64 Resp: 453
 Ion Ratio Lower Upper
 64 100
 66 0.0 25.1 37.7#

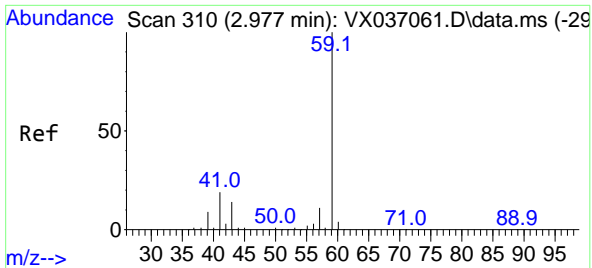


#8
 Diethyl Ether
 Concen: 1.030 ug/l
 RT: 2.130 min Scan# 171
 Delta R.T. -0.006 min
 Lab File: VX037363.D
 Acq: 30 Aug 2023 02:21



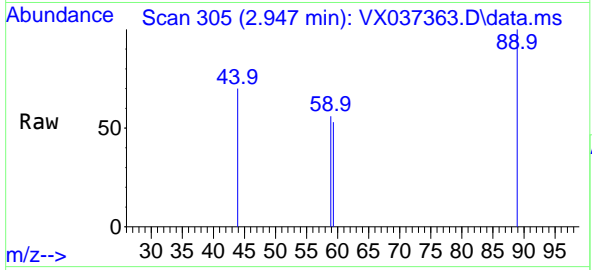
Tgt Ion: 74 Resp: 1072
 Ion Ratio Lower Upper
 74 100
 45 87.4 53.3 159.8



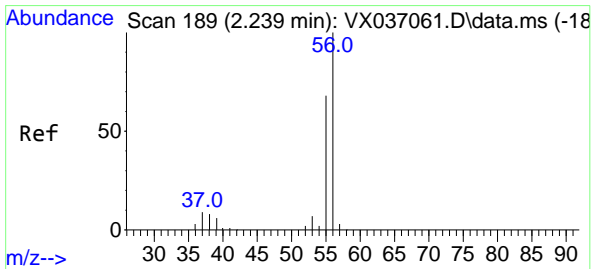
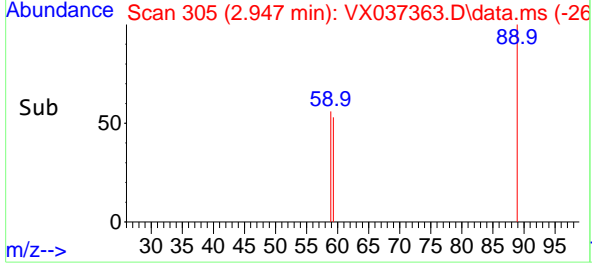
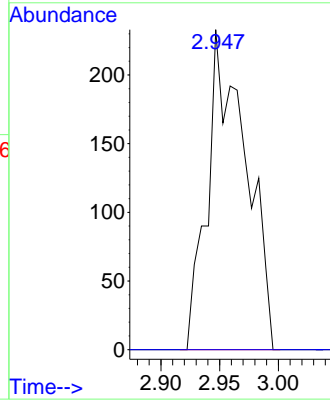


#11
 Tert butyl alcohol
 Concen: 1.057 ug/l
 RT: 2.947 min Scan# 305
 Delta R.T. -0.030 min
 Lab File: VX037363.D
 Acq: 30 Aug 2023 02:21

Instrument : MSVOA_X
 ClientSampleId :

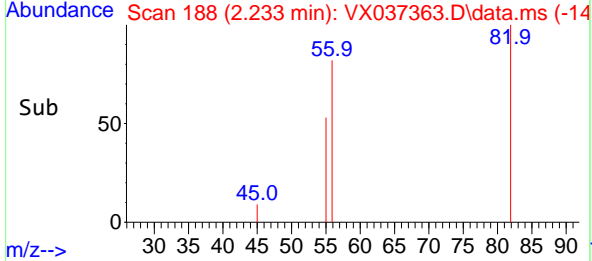
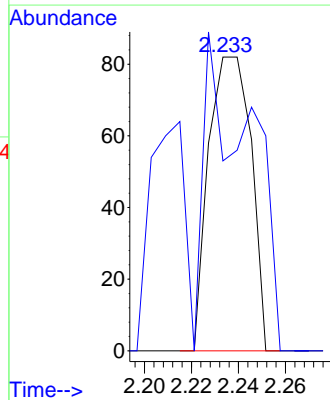
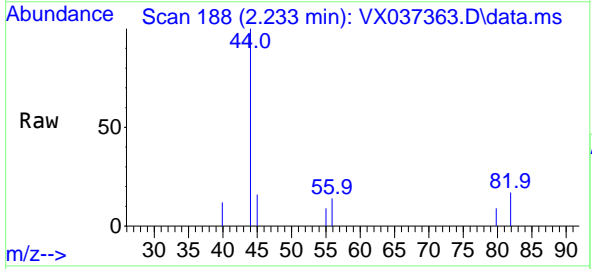


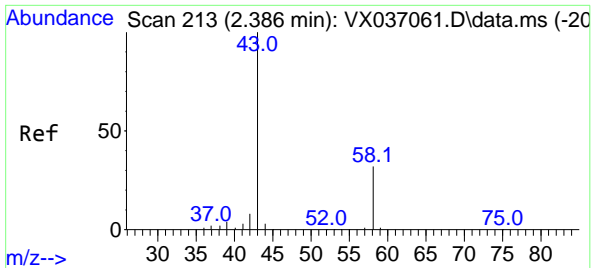
Tgt Ion: 59 Resp: 531
 Ion Ratio Lower Upper
 59 100
 57 0.0 6.0 9.0#



#13
 Acrolein
 Concen: 0.270 ug/l
 RT: 2.233 min Scan# 188
 Delta R.T. -0.006 min
 Lab File: VX037363.D
 Acq: 30 Aug 2023 02:21

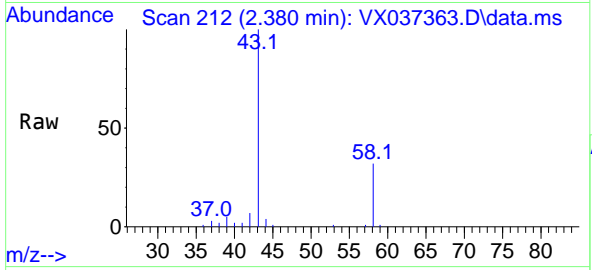
Tgt Ion: 56 Resp: 103
 Ion Ratio Lower Upper
 56 100
 55 115.5 57.1 85.7#



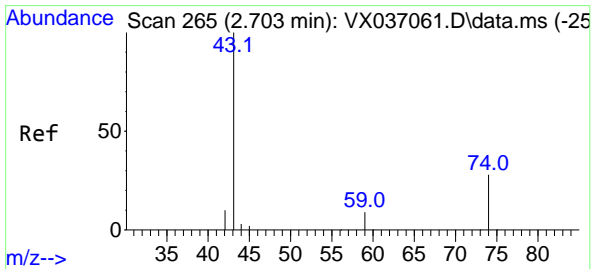
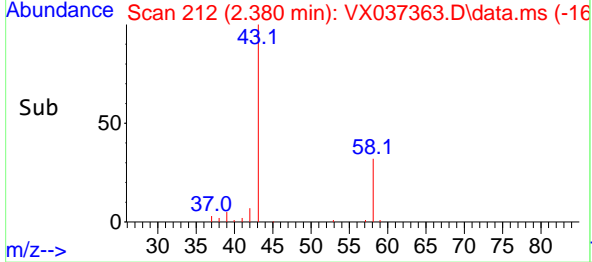
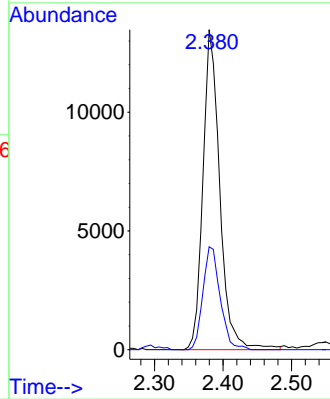


#16
 Acetone
 Concen: 27.559 ug/l
 RT: 2.380 min Scan# 213
 Delta R.T. -0.006 min
 Lab File: VX037363.D
 Acq: 30 Aug 2023 02:21

Instrument :
 MSVOA_X
 ClientSampleId :

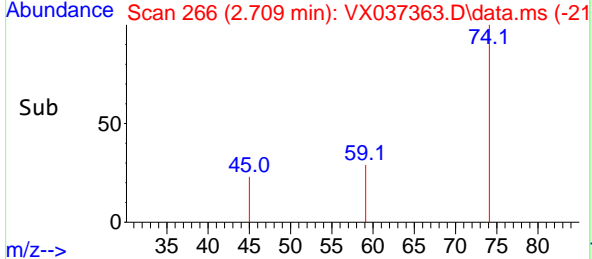
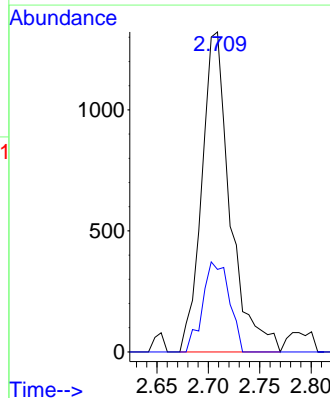
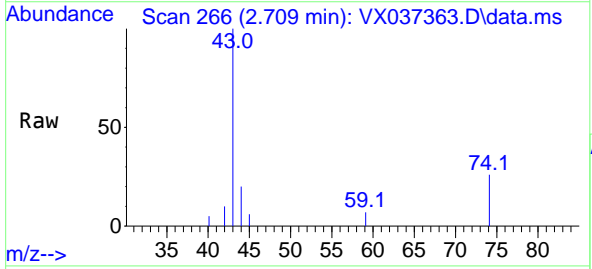


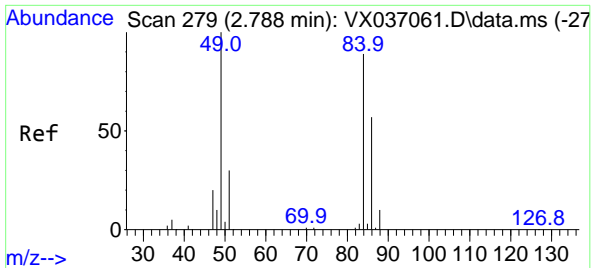
Tgt Ion: 43 Resp: 23084
 Ion Ratio Lower Upper
 43 100
 58 32.1 21.9 32.9



#18
 Methyl Acetate
 Concen: 0.804 ug/l
 RT: 2.709 min Scan# 266
 Delta R.T. 0.006 min
 Lab File: VX037363.D
 Acq: 30 Aug 2023 02:21

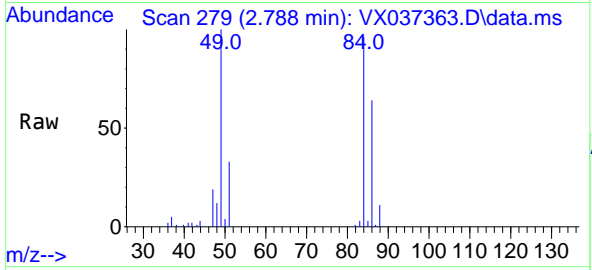
Tgt Ion: 43 Resp: 2537
 Ion Ratio Lower Upper
 43 100
 74 26.3 17.8 26.8





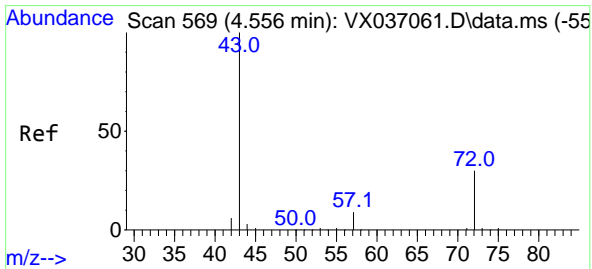
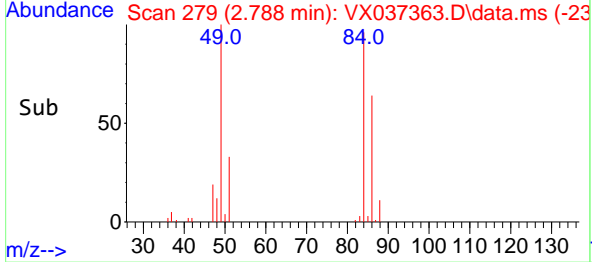
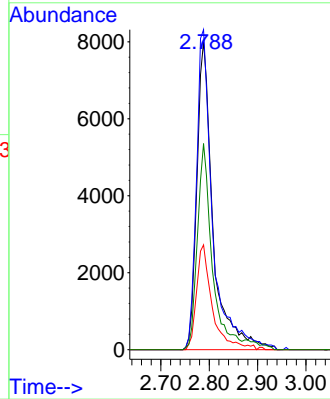
#20
 Methylene Chloride
 Concen: 9.948 ug/l
 RT: 2.788 min Scan# 21
 Delta R.T. 0.000 min
 Lab File: VX037363.D
 Acq: 30 Aug 2023 02:21

Instrument :
 MSVOA_X
 ClientSampleId :



Tgt Ion: 84 Resp: 18635

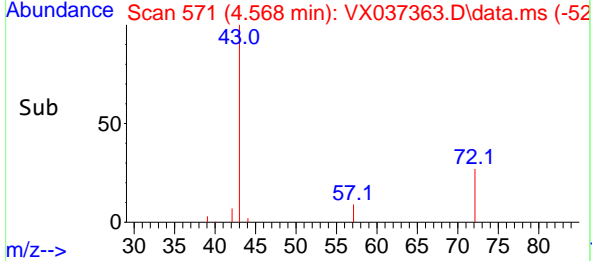
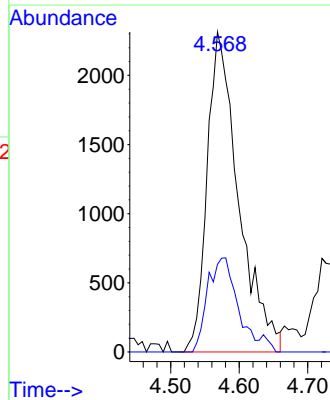
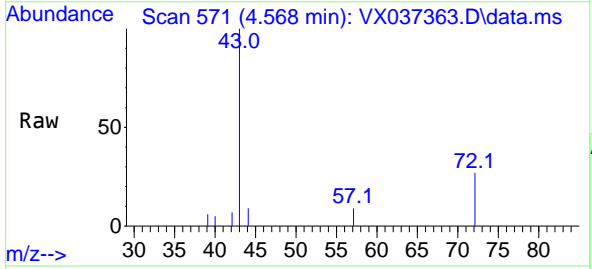
Ion	Ratio	Lower	Upper
84	100		
49	104.0	103.6	155.4
51	34.1	33.8	50.6
86	67.0	49.4	74.0

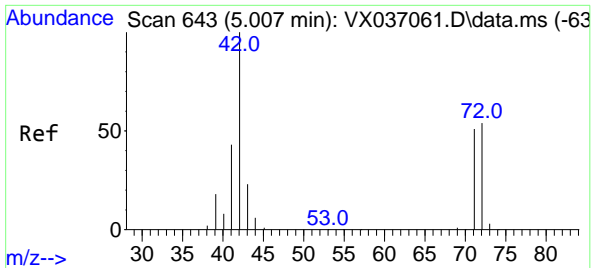


#25
 2-Butanone
 Concen: 5.862 ug/l
 RT: 4.568 min Scan# 571
 Delta R.T. 0.012 min
 Lab File: VX037363.D
 Acq: 30 Aug 2023 02:21

Tgt Ion: 43 Resp: 7393

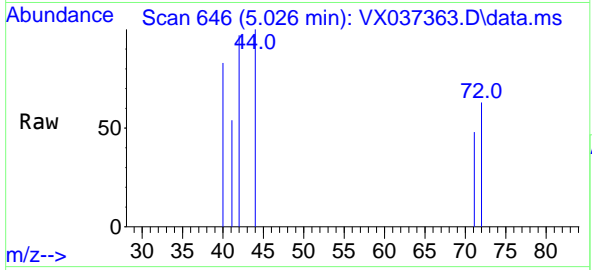
Ion	Ratio	Lower	Upper
43	100		
72	27.4	19.4	29.2





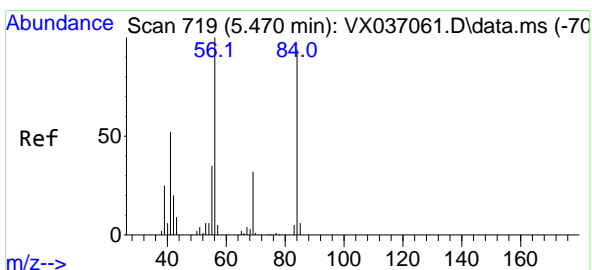
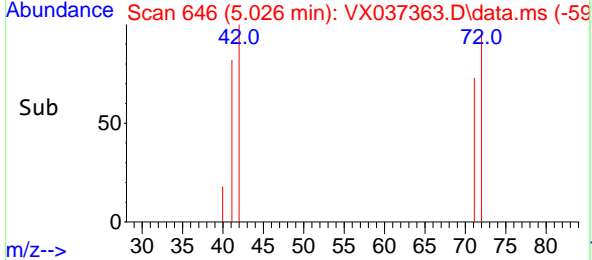
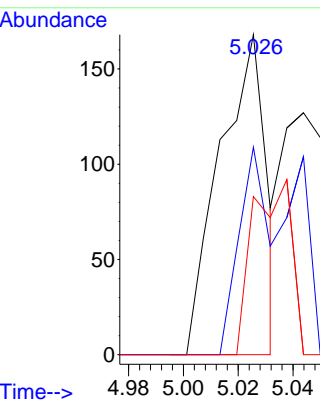
#29
 Tetrahydrofuran
 Concen: 0.246 ug/l
 RT: 5.026 min Scan# 643
 Delta R.T. 0.018 min
 Lab File: VX037363.D
 Acq: 30 Aug 2023 02:21

Instrument : MSVOA_X
 ClientSampleId :

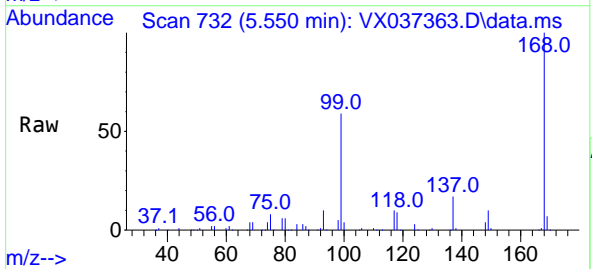


Tgt Ion: 42 Resp: 198

Ion	Ratio	Lower	Upper
42	100		
72	73.7	34.2	51.4#
71	45.5	32.2	48.2

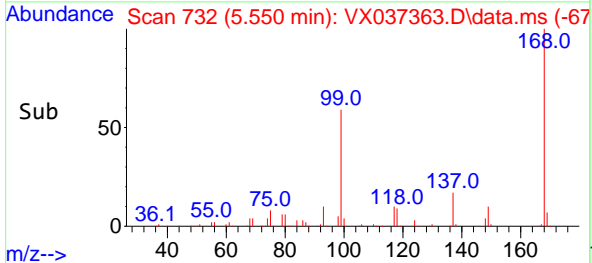
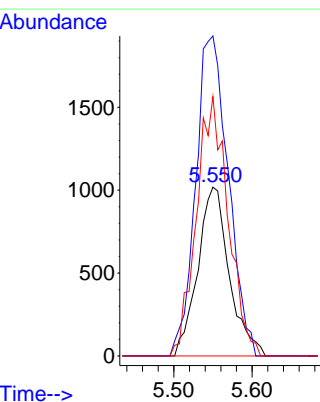


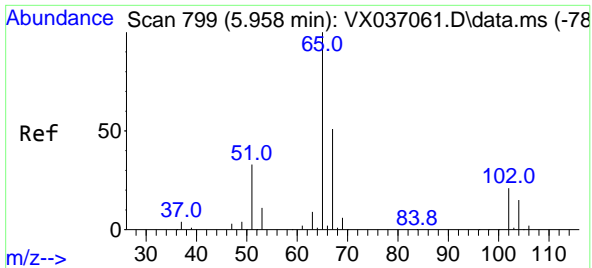
#31
 Cyclohexane
 Concen: 1.183 ug/l
 RT: 5.550 min Scan# 732
 Delta R.T. 0.079 min
 Lab File: VX037363.D
 Acq: 30 Aug 2023 02:21



Tgt Ion: 56 Resp: 2848

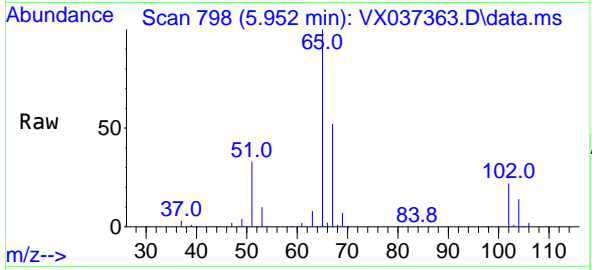
Ion	Ratio	Lower	Upper
56	100		
69	189.5	23.4	35.2#
84	153.6	65.9	98.9#



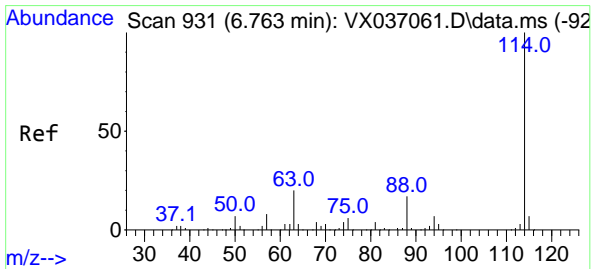
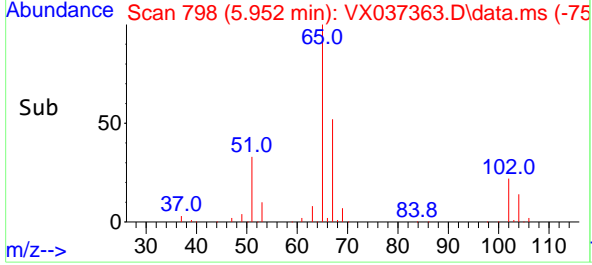
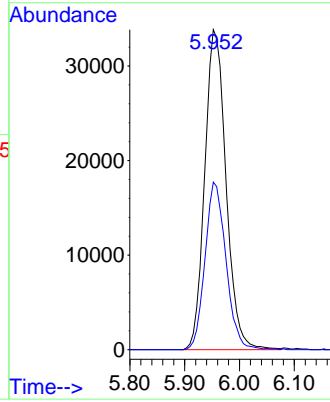


#33
 1,2-Dichloroethane-d4
 Concen: 42.621 ug/l
 RT: 5.952 min Scan# 799
 Delta R.T. -0.006 min
 Lab File: VX037363.D
 Acq: 30 Aug 2023 02:21

Instrument : MSVOA_X
 ClientSampleId :

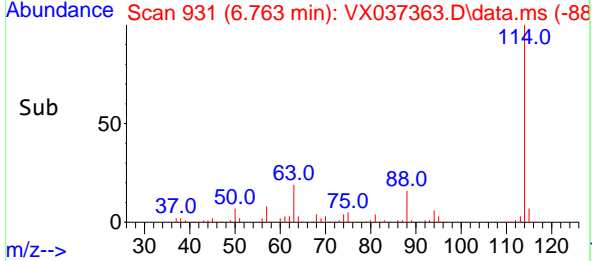
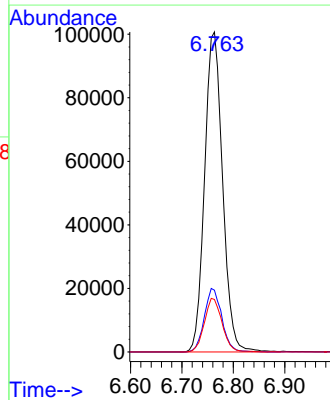
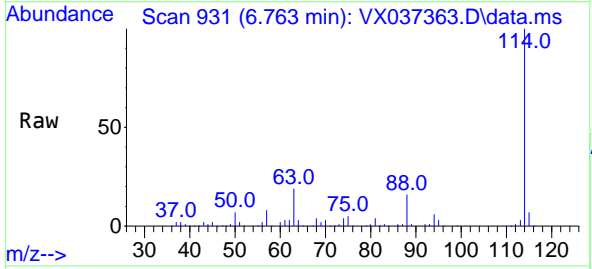


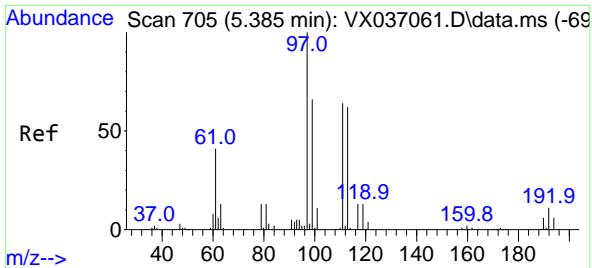
Tgt Ion: 65 Resp: 91254
 Ion Ratio Lower Upper
 65 100
 67 51.5 0.0 100.2



#34
 1,4-Difluorobenzene
 Concen: 50.000 ug/l
 RT: 6.763 min Scan# 931
 Delta R.T. 0.000 min
 Lab File: VX037363.D
 Acq: 30 Aug 2023 02:21

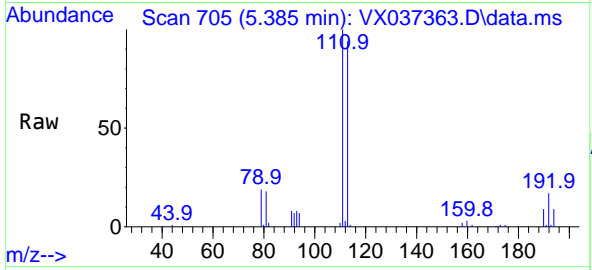
Tgt Ion: 114 Resp: 244618
 Ion Ratio Lower Upper
 114 100
 63 19.3 0.0 45.0
 88 16.4 0.0 36.6



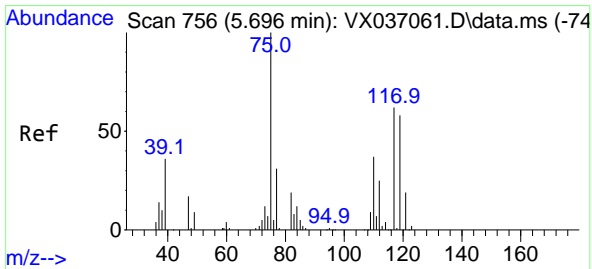
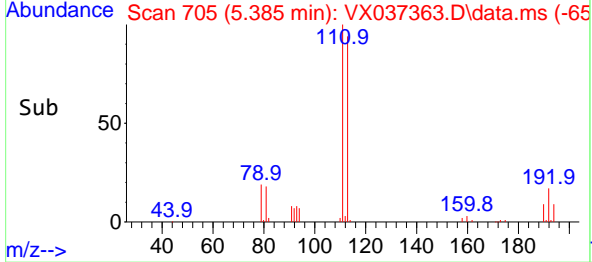
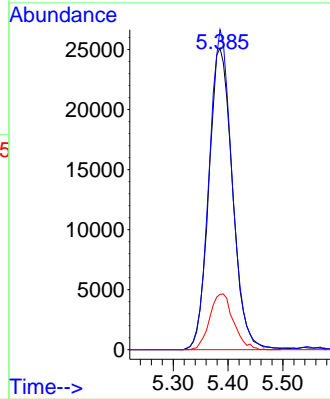


#35
 Dibromofluoromethane
 Concen: 46.327 ug/l
 RT: 5.385 min Scan# 705
 Delta R.T. 0.000 min
 Lab File: VX037363.D
 Acq: 30 Aug 2023 02:21

Instrument : MSVOA_X
 ClientSampleId :

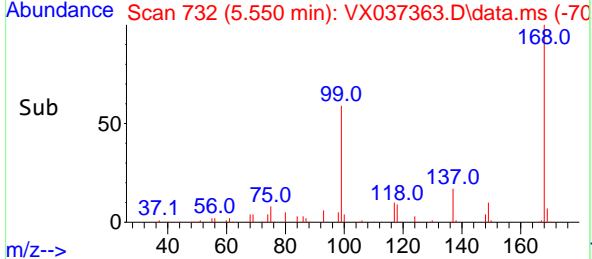
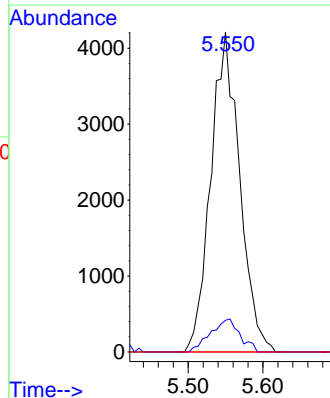
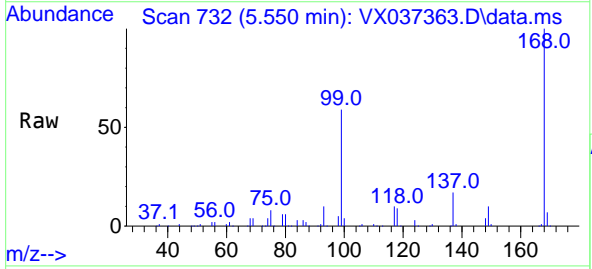


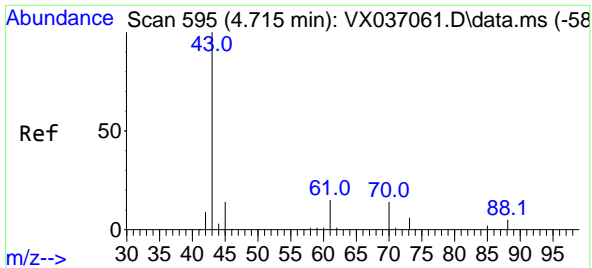
Tgt Ion:113 Resp: 75052
 Ion Ratio Lower Upper
 113 100
 111 103.1 82.9 124.3
 192 18.6 13.3 19.9



#36
 1,1-Dichloropropene
 Concen: 4.917 ug/l
 RT: 5.550 min Scan# 732
 Delta R.T. -0.146 min
 Lab File: VX037363.D
 Acq: 30 Aug 2023 02:21

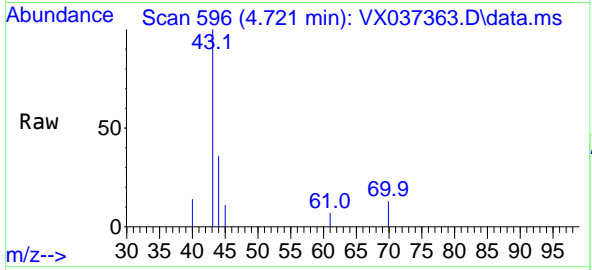
Tgt Ion: 75 Resp: 11318
 Ion Ratio Lower Upper
 75 100
 110 10.4 17.0 50.9#
 77 0.0 24.7 37.1#





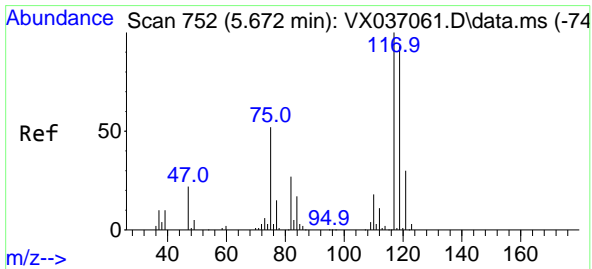
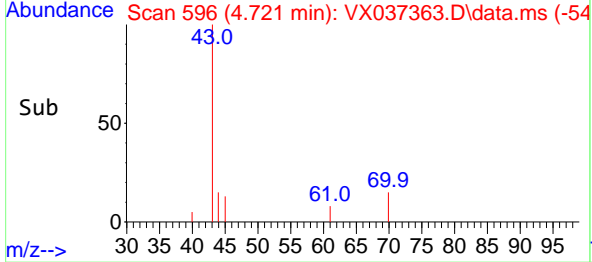
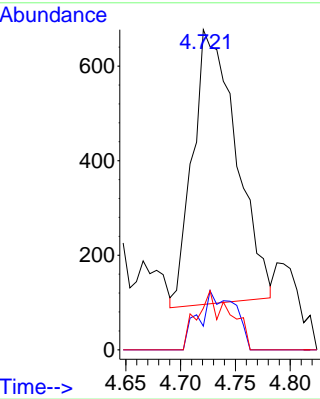
#37
 Ethyl Acetate
 Concen: 0.679 ug/l
 RT: 4.721 min Scan# 596
 Delta R.T. 0.006 min
 Lab File: VX037363.D
 Acq: 30 Aug 2023 02:21

Instrument : MSVOA_X
 ClientSampleId :

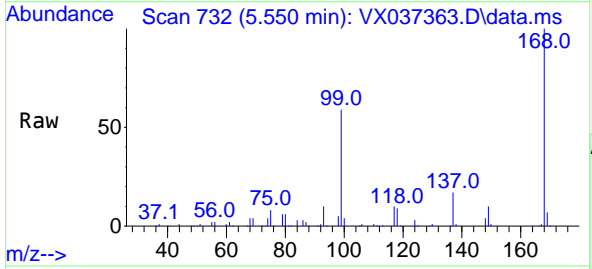


Tgt Ion: 43 Resp: 1597

Ion	Ratio	Lower	Upper
43	100		
61	17.5	10.6	16.0#
70	16.6	8.3	12.5#

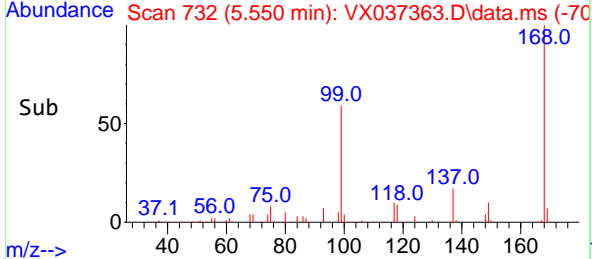
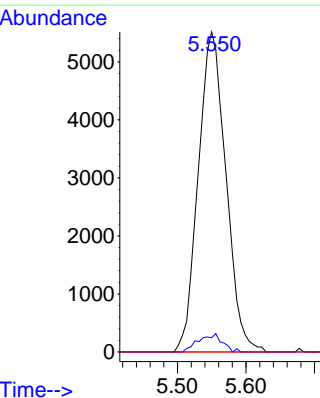


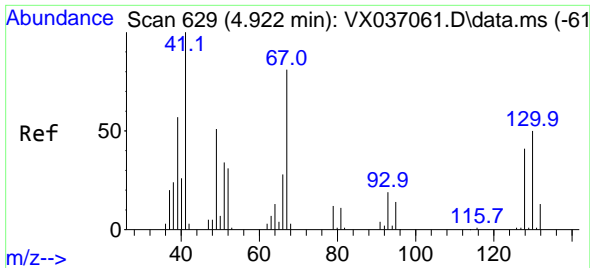
#38
 Carbon Tetrachloride
 Concen: 6.187 ug/l
 RT: 5.550 min Scan# 732
 Delta R.T. -0.122 min
 Lab File: VX037363.D
 Acq: 30 Aug 2023 02:21



Tgt Ion: 117 Resp: 15469

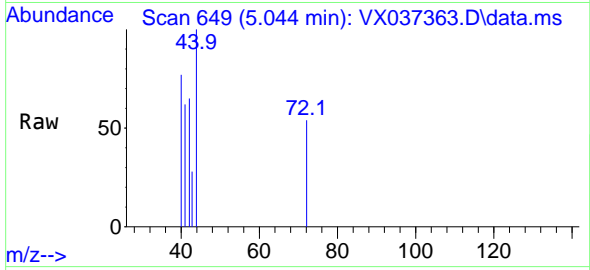
Ion	Ratio	Lower	Upper
117	100		
119	4.5	78.2	117.2#
121	0.0	24.4	36.6#



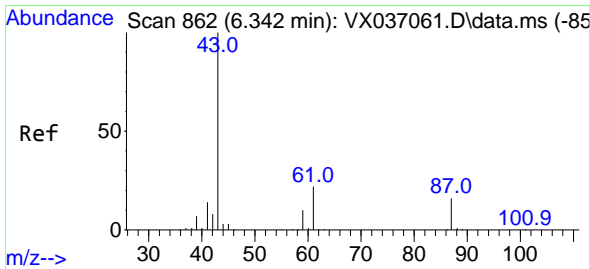
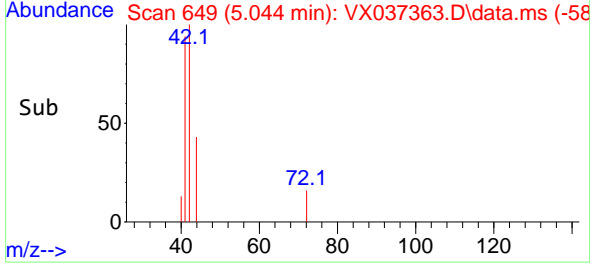
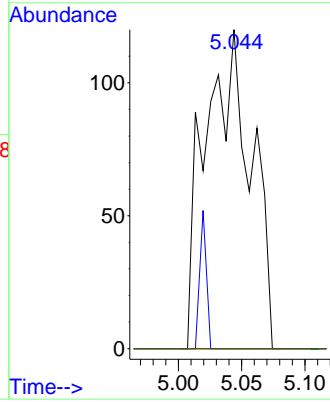


#41
 Methacrylonitrile
 Concen: 0.247 ug/l
 RT: 5.044 min Scan# 649
 Delta R.T. 0.122 min
 Lab File: VX037363.D
 Acq: 30 Aug 2023 02:21

Instrument :
 MSVOA_X
 ClientSampleId :

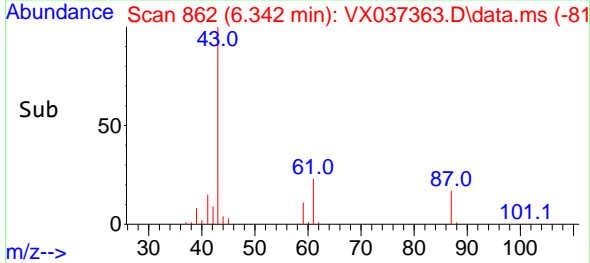
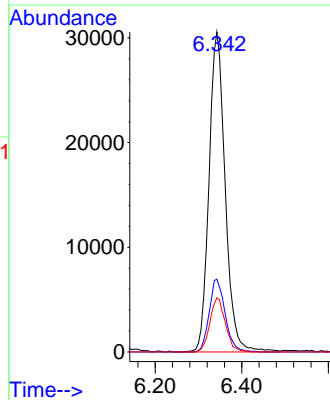
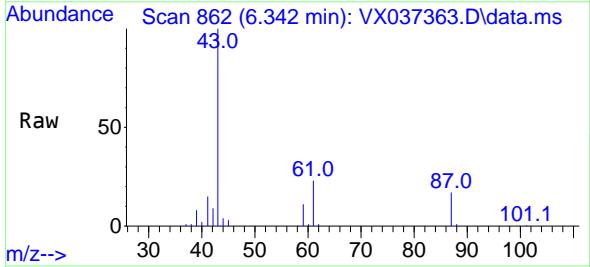


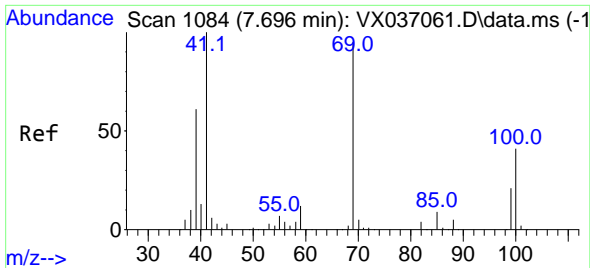
Tgt Ion: 41 Resp: 302
 Ion Ratio Lower Upper
 41 100
 39 0.0 45.2 67.8#
 67 0.0 52.6 78.8#
 52 0.0 22.7 34.1#



#43
 Isopropyl Acetate
 Concen: 21.242 ug/l
 RT: 6.342 min Scan# 862
 Delta R.T. 0.000 min
 Lab File: VX037363.D
 Acq: 30 Aug 2023 02:21

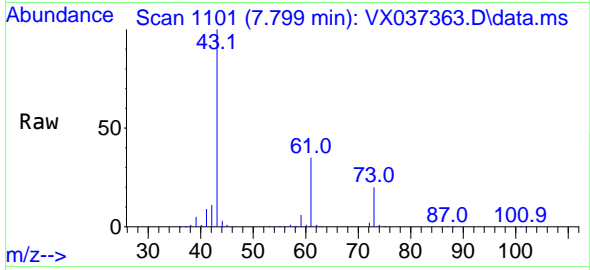
Tgt Ion: 43 Resp: 79291
 Ion Ratio Lower Upper
 43 100
 61 22.3 15.2 22.8
 87 16.2 9.8 14.6#



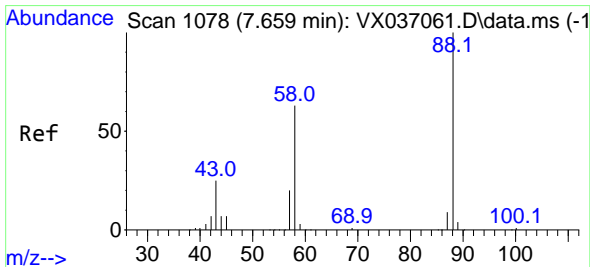
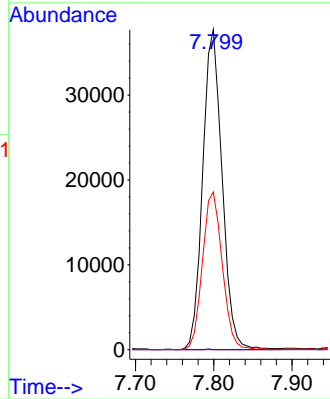
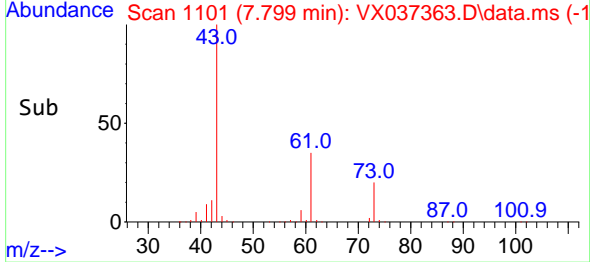


#48
 Methyl methacrylate
 Concen: 35.635 ug/l
 RT: 7.799 min Scan# 1101
 Delta R.T. 0.104 min
 Lab File: VX037363.D
 Acq: 30 Aug 2023 02:21

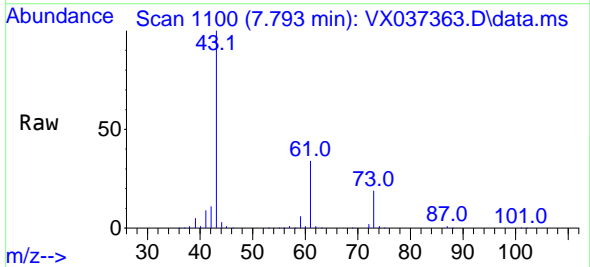
Instrument : MSVOA_X
 ClientSampleId :



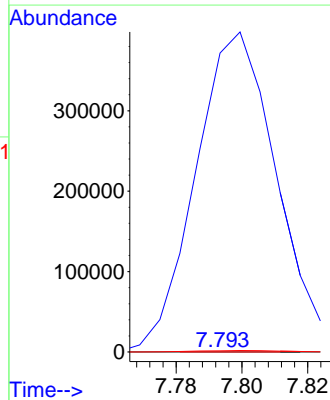
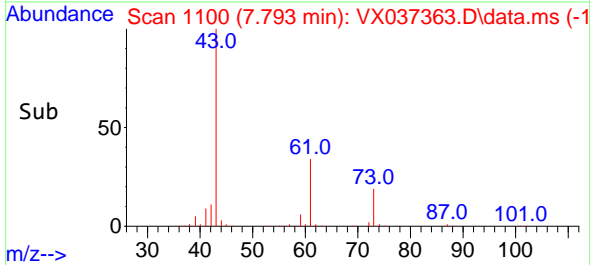
Tgt Ion: 41 Resp: 64869
 Ion Ratio Lower Upper
 41 100
 69 0.1 59.2 88.8#
 39 50.3 47.7 71.5

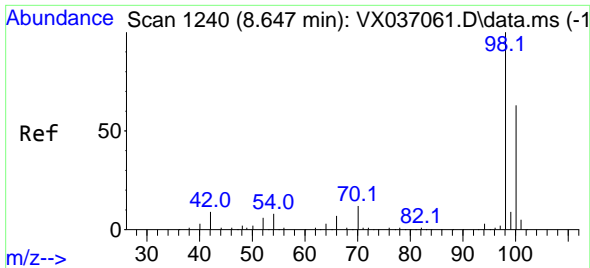


#49
 1,4-Dioxane
 Concen: 1.346 ug/l
 RT: 7.793 min Scan# 1100
 Delta R.T. 0.134 min
 Lab File: VX037363.D
 Acq: 30 Aug 2023 02:21



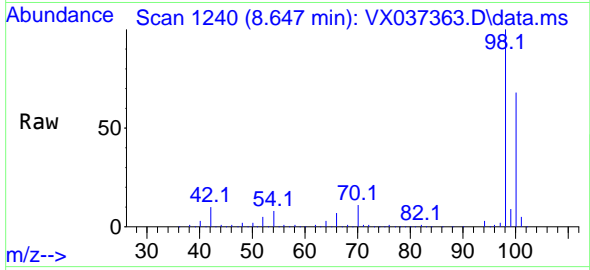
Tgt Ion: 88 Resp: 66
 Ion Ratio Lower Upper
 88 100
 43 1048033.3 0.0 0.0#
 58 4877.3 60.1 90.1#



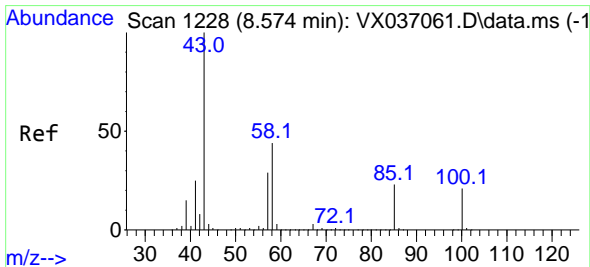
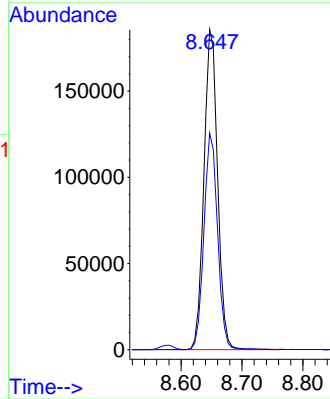
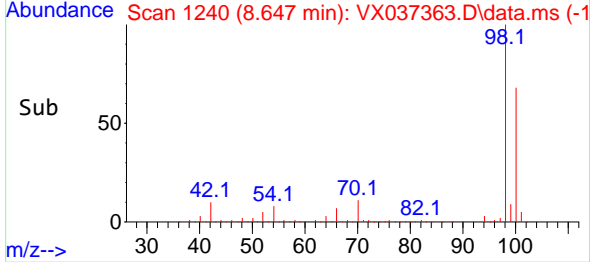


#50
 Toluene-d8
 Concen: 49.339 ug/l
 RT: 8.647 min Scan# 11
 Delta R.T. 0.000 min
 Lab File: VX037363.D
 Acq: 30 Aug 2023 02:21

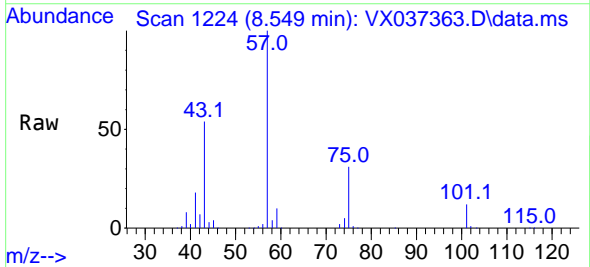
Instrument :
 MSVOA_X
 ClientSampleId :



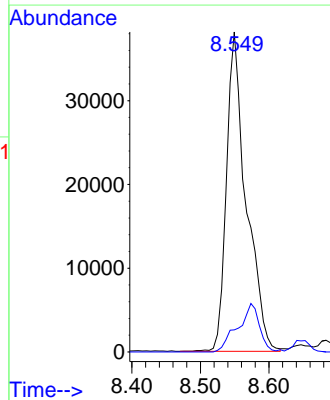
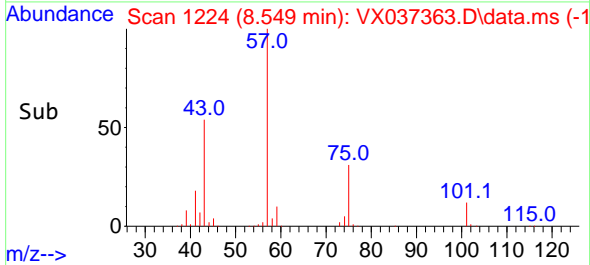
Tgt Ion: 98 Resp: 289943
 Ion Ratio Lower Upper
 98 100
 100 67.4 53.1 79.7

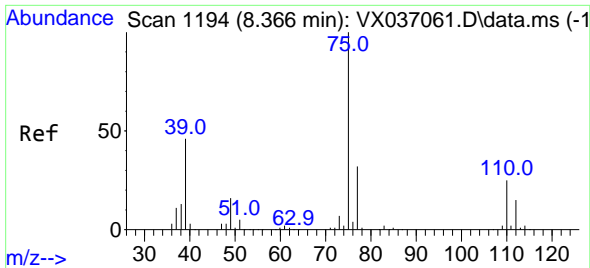


#51
 4-Methyl-2-Pentanone
 Concen: 33.586 ug/l
 RT: 8.549 min Scan# 1224
 Delta R.T. -0.024 min
 Lab File: VX037363.D
 Acq: 30 Aug 2023 02:21



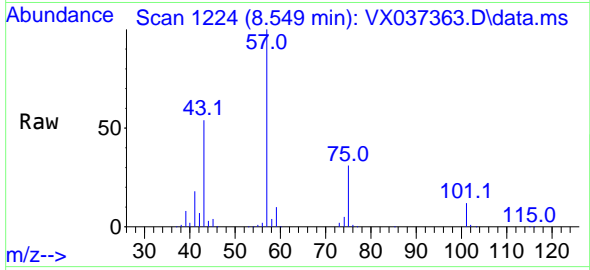
Tgt Ion: 43 Resp: 76127
 Ion Ratio Lower Upper
 43 100
 58 0.0 30.4 45.6#



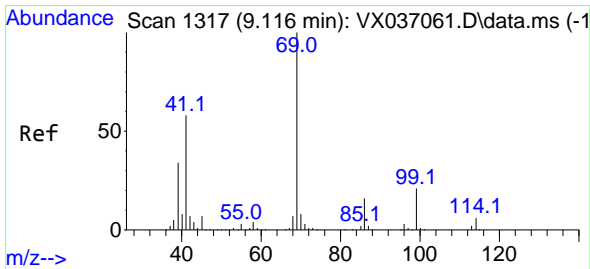
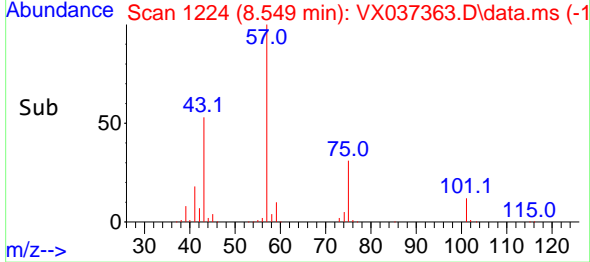
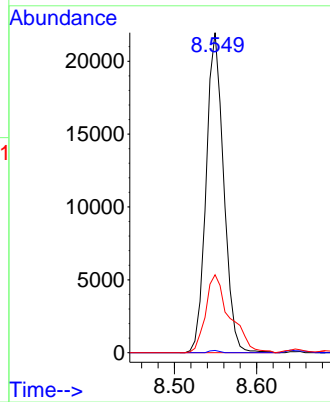


#54
 cis-1,3-Dichloropropene
 Concen: 11.515 ug/l
 RT: 8.549 min Scan# 1194
 Delta R.T. 0.183 min
 Lab File: VX037363.D
 Acq: 30 Aug 2023 02:21

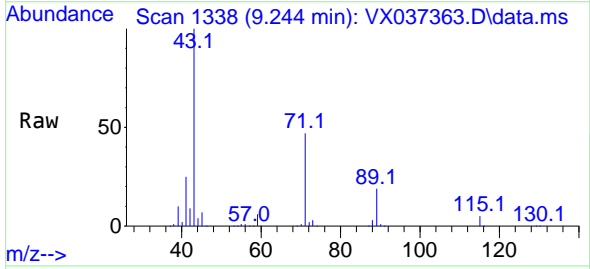
Instrument : MSVOA_X
 ClientSampleId :



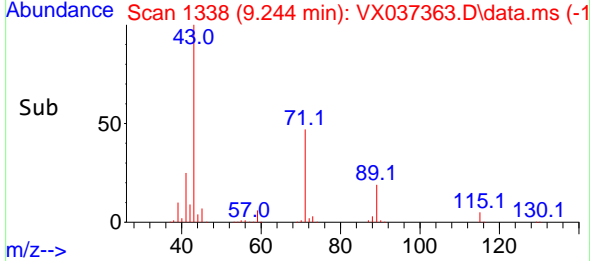
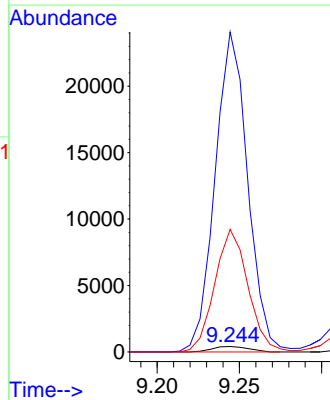
Tgt Ion: 75 Resp: 32539
 Ion Ratio Lower Upper
 75 100
 77 0.7 25.3 37.9#
 39 24.4 46.7 70.1#

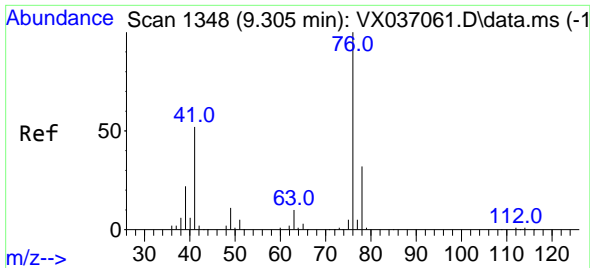


#56
 Ethyl methacrylate
 Concen: 0.228 ug/l
 RT: 9.244 min Scan# 1338
 Delta R.T. 0.128 min
 Lab File: VX037363.D
 Acq: 30 Aug 2023 02:21



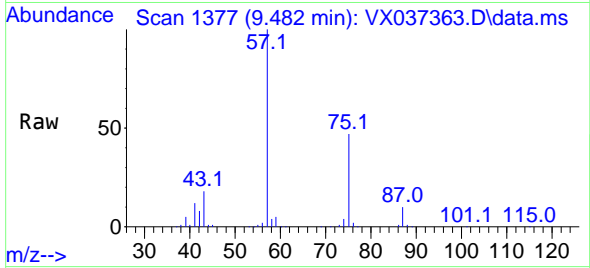
Tgt Ion: 69 Resp: 633
 Ion Ratio Lower Upper
 69 100
 41 5250.6 56.8 85.2#
 39 2048.7 32.0 48.0#



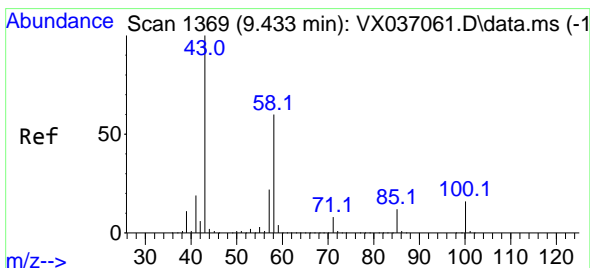
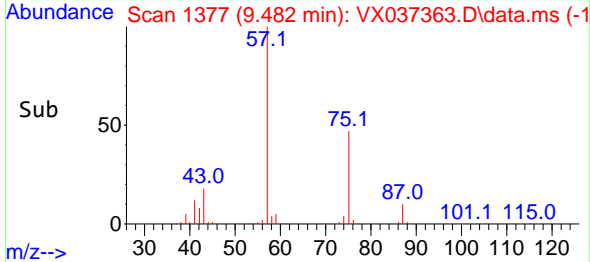
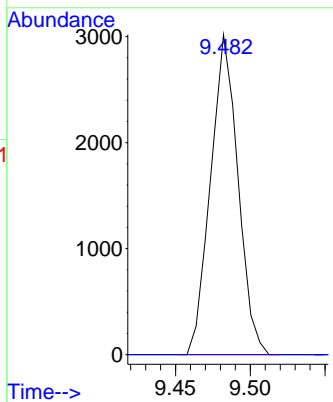


#57
 1,3-Dichloropropane
 Concen: 1.284 ug/l
 RT: 9.482 min Scan# 1377
 Delta R.T. 0.177 min
 Lab File: VX037363.D
 Acq: 30 Aug 2023 02:21

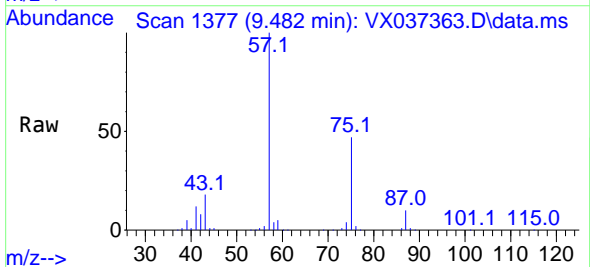
Instrument : MSVOA_X
 ClientSampleId :



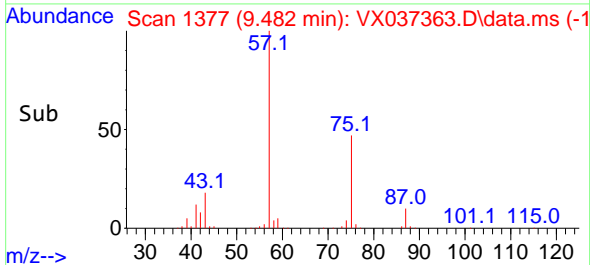
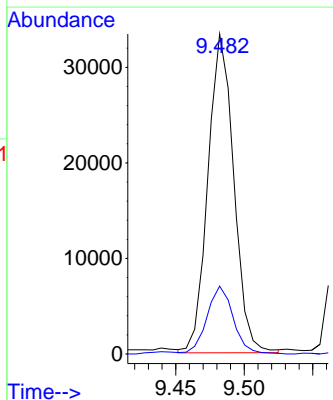
Tgt Ion: 76 Resp: 3845
 Ion Ratio Lower Upper
 76 100
 78 0.0 26.1 39.1#

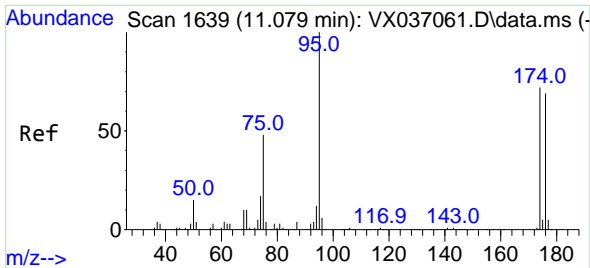


#59
 2-Hexanone
 Concen: 25.305 ug/l
 RT: 9.482 min Scan# 1377
 Delta R.T. 0.049 min
 Lab File: VX037363.D
 Acq: 30 Aug 2023 02:21



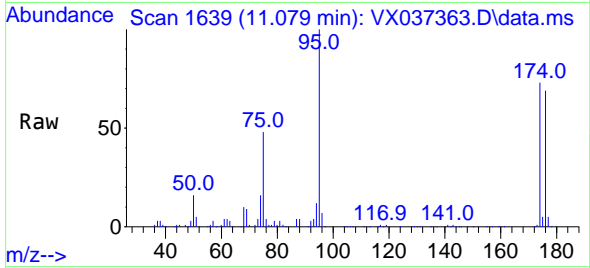
Tgt Ion: 43 Resp: 43733
 Ion Ratio Lower Upper
 43 100
 58 21.6 26.2 78.5#



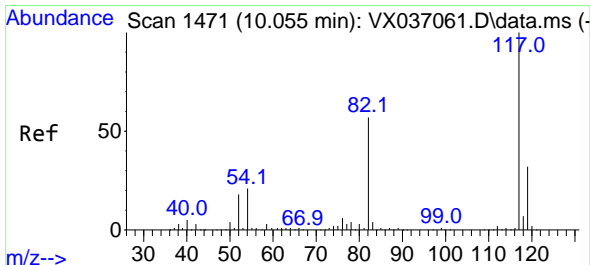
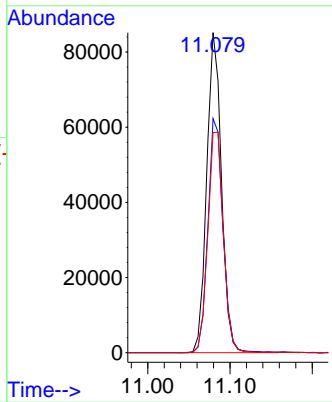
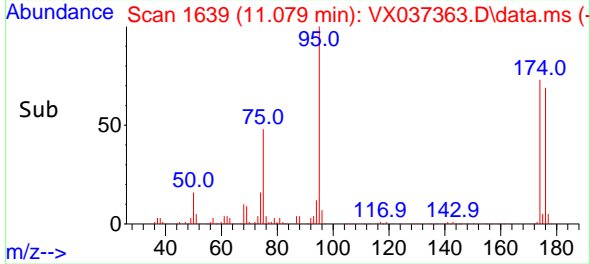


#62
 4-Bromofluorobenzene
 Concen: 45.953 ug/l
 RT: 11.079 min Scan# 11
 Delta R.T. 0.000 min
 Lab File: VX037363.D
 Acq: 30 Aug 2023 02:21

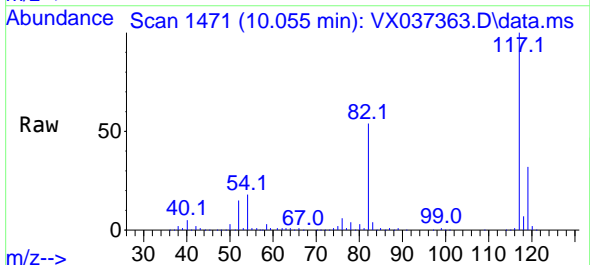
Instrument :
 MSVOA_X
 ClientSampleId :



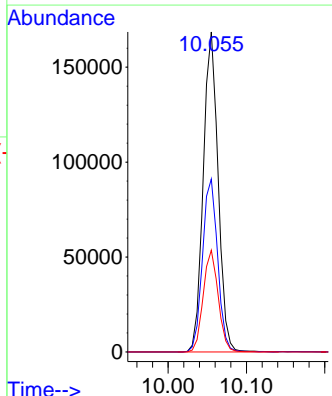
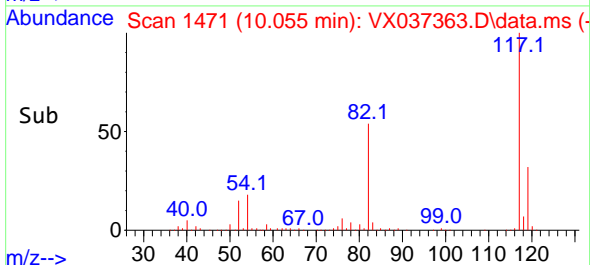
Tgt Ion: 95 Resp: 106124
 Ion Ratio Lower Upper
 95 100
 174 74.7 0.0 135.6
 176 72.5 0.0 131.0

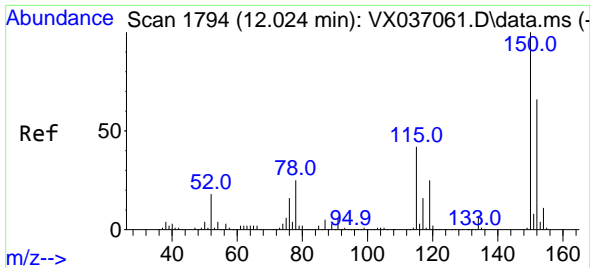


#63
 Chlorobenzene-d5
 Concen: 50.000 ug/l
 RT: 10.055 min Scan# 1471
 Delta R.T. 0.000 min
 Lab File: VX037363.D
 Acq: 30 Aug 2023 02:21



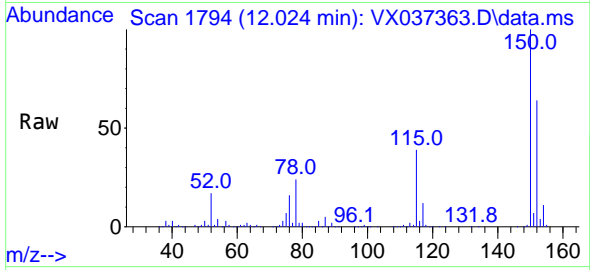
Tgt Ion: 117 Resp: 221827
 Ion Ratio Lower Upper
 117 100
 82 54.1 46.2 69.4
 119 31.8 25.5 38.3



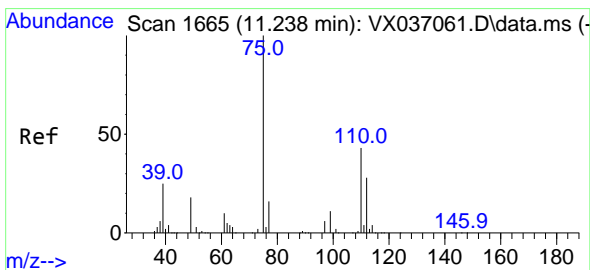
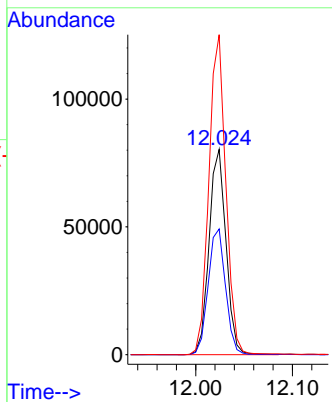
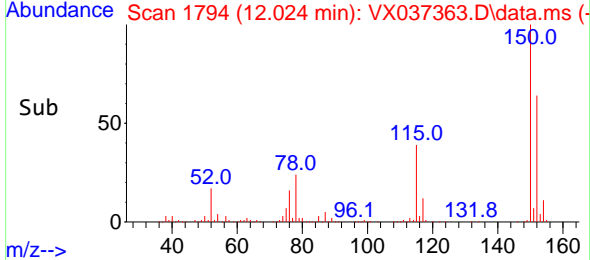


#72
 1,4-Dichlorobenzene-d4
 Concen: 50.000 ug/l
 RT: 12.024 min Scan# 11
 Delta R.T. 0.000 min
 Lab File: VX037363.D
 Acq: 30 Aug 2023 02:21

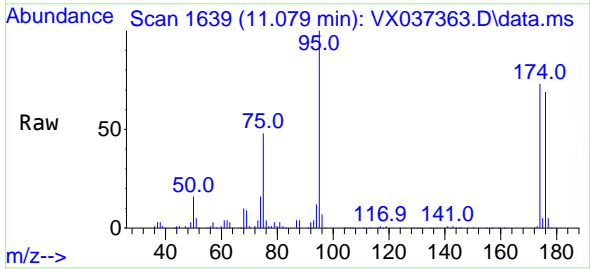
Instrument :
 MSVOA_X
 ClientSampleId :



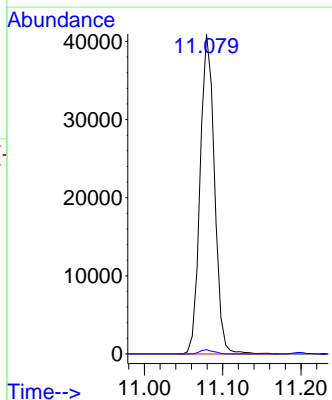
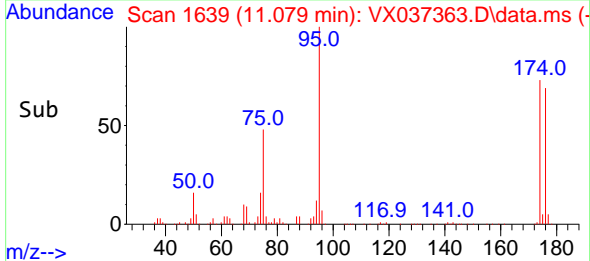
Tgt Ion:152 Resp: 98010
 Ion Ratio Lower Upper
 152 100
 115 62.9 43.3 129.9
 150 156.2 0.0 345.0

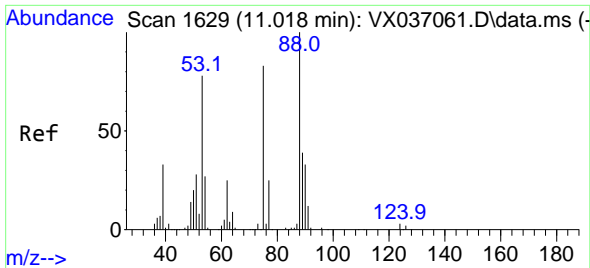


#76
 1,2,3-Trichloropropane
 Concen: 24.987 ug/l
 RT: 11.079 min Scan# 1639
 Delta R.T. -0.158 min
 Lab File: VX037363.D
 Acq: 30 Aug 2023 02:21



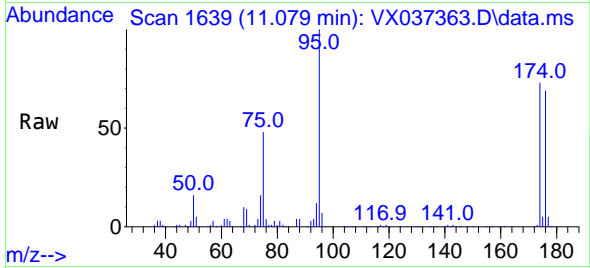
Tgt Ion: 75 Resp: 52155
 Ion Ratio Lower Upper
 75 100
 77 1.3 19.1 57.5#



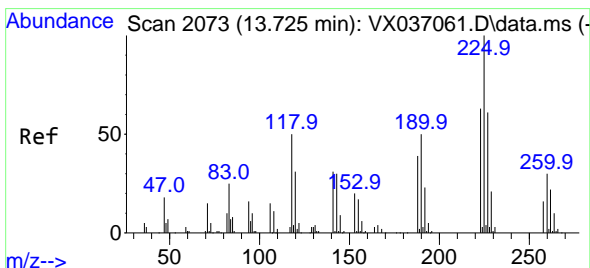
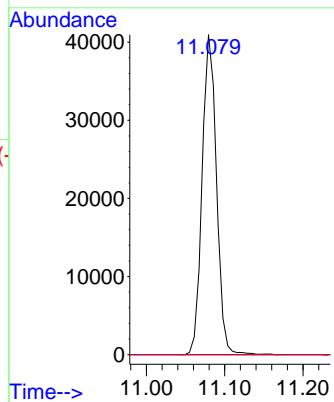
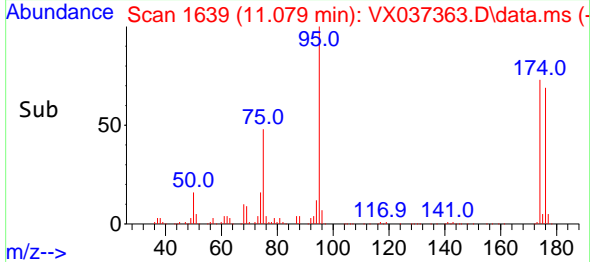


#81
 trans-1,4-Dichloro-2-butene
 Concen: 69.790 ug/l
 RT: 11.079 min Scan# 1639
 Delta R.T. 0.061 min
 Lab File: VX037363.D
 Acq: 30 Aug 2023 02:21

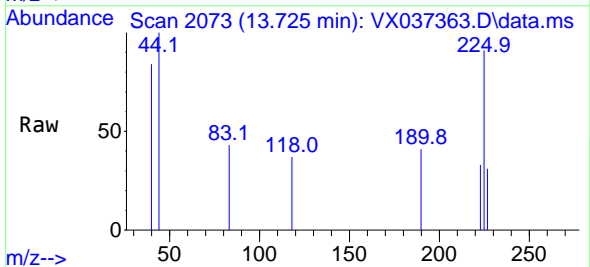
Instrument : MSVOA_X
 ClientSampleId :



Tgt Ion: 75 Resp: 52155
 Ion Ratio Lower Upper
 75 100
 53 0.0 90.5 135.7#
 89 0.0 36.9 55.3#



#94
 Hexachlorobutadiene
 Concen: 0.204 ug/l
 RT: 13.725 min Scan# 2073
 Delta R.T. 0.000 min
 Lab File: VX037363.D
 Acq: 30 Aug 2023 02:21



Tgt Ion: 225 Resp: 147
 Ion Ratio Lower Upper
 225 100
 223 28.6 31.1 93.2#
 227 31.3 32.5 97.5#

