

Data Path : Z:\voasrv\HPCHEM1\MSVOA_X\Data\VX082923\
 Data File : VX037371.D
 Acq On : 30 Aug 2023 05:35
 Operator : JC/MD
 Sample : 04198-10
 Misc : 5.0mL/MSVOA_X/WATER
 ALS Vial : 49 Sample Multiplier: 1

Instrument :
 MSVOA_X
 ClientSampleId :

Quant Time: Aug 31 01:26:39 2023
 Quant Method : Z:\voasrv\HPCHEM1\MSVOA_X\Method\82X081723W.M
 Quant Title : SW846 8260
 QLast Update : Fri Aug 18 09:30:38 2023
 Response via : Initial Calibration

Compound	R.T.	QIon	Response	Conc	Units	Dev(Min)

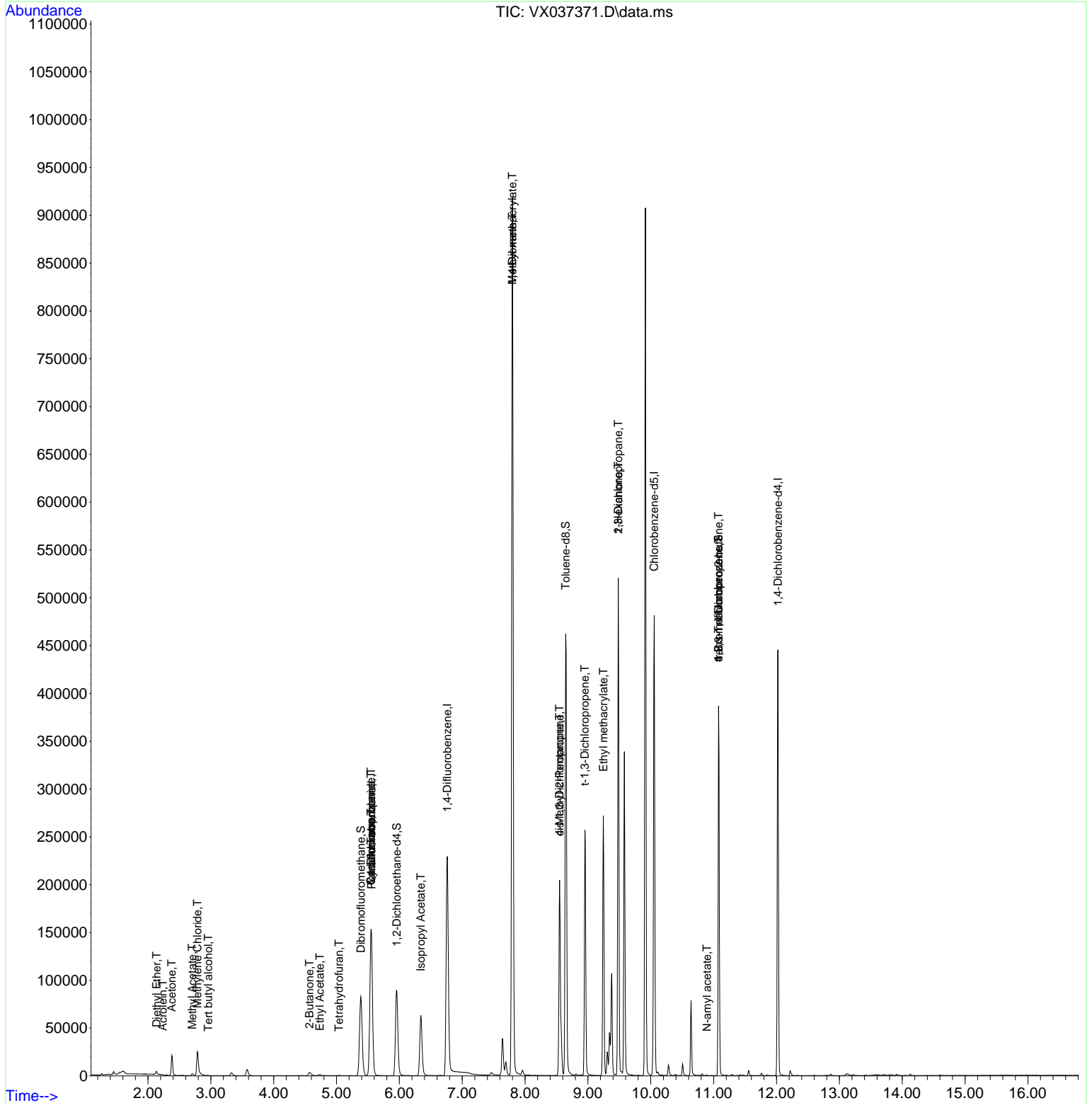
Internal Standards						
1) Pentafluorobenzene	5.556	168	145256	50.000	ug/l	0.00
34) 1,4-Difluorobenzene	6.763	114	244567	50.000	ug/l	0.00
63) Chlorobenzene-d5	10.055	117	220673	50.000	ug/l	0.00
72) 1,4-Dichlorobenzene-d4	12.024	152	98855	50.000	ug/l	0.00
System Monitoring Compounds						
33) 1,2-Dichloroethane-d4	5.958	65	91287	43.592	ug/l	0.00
Spiked Amount	50.000	Range	78 - 117	Recovery	=	87.180%
35) Dibromofluoromethane	5.385	113	75157	46.402	ug/l	0.00
Spiked Amount	50.000	Range	75 - 124	Recovery	=	92.800%
50) Toluene-d8	8.647	98	288556	49.113	ug/l	0.00
Spiked Amount	50.000	Range	92 - 112	Recovery	=	98.220%
62) 4-Bromofluorobenzene	11.079	95	105445	45.669	ug/l	0.00
Spiked Amount	50.000	Range	83 - 123	Recovery	=	91.340%
Target Compounds						
						Qvalue
8) Diethyl Ether	2.136	74	1085	1.065	ug/l	79
11) Tert butyl alcohol	2.959	59	458	0.932	ug/l #	78
13) Acrolein	2.233	56	78	0.209	ug/l #	27
16) Acetone	2.380	43	21408	26.131	ug/l #	84
18) Methyl Acetate	2.703	43	2613	0.847	ug/l	95
20) Methylene Chloride	2.788	84	15571	8.499	ug/l #	84
25) 2-Butanone	4.568	43	7619	6.177	ug/l #	82
29) Tetrahydrofuran	5.038	42	281	0.357	ug/l #	74
31) Cyclohexane	5.550	56	2768	1.176	ug/l #	1
36) 1,1-Dichloropropene	5.550	75	11494	4.995	ug/l #	51
37) Ethyl Acetate	4.733	43	2717	1.156	ug/l #	91
38) Carbon Tetrachloride	5.550	117	15264	6.106	ug/l #	17
43) Isopropyl Acetate	6.342	43	84081	22.530	ug/l #	91
48) Methyl methacrylate	7.799	41	74279	40.813	ug/l #	46
49) 1,4-Dioxane	7.799	88	109	2.224	ug/l #	1
51) 4-Methyl-2-Pentanone	8.549	43	80761	35.638	ug/l #	37
53) t-1,3-Dichloropropene	8.952	75	589	0.225	ug/l #	43
54) cis-1,3-Dichloropropene	8.549	75	35903	12.708	ug/l #	50
56) Ethyl methacrylate	9.244	69	572	0.206	ug/l #	1
57) 1,3-Dichloropropane	9.482	76	4849	1.620	ug/l #	42
59) 2-Hexanone	9.482	43	54119	31.321	ug/l #	56
74) N-amyl acetate	10.896	43	740	0.265	ug/l #	44
76) 1,2,3-Trichloropropane	11.079	75	52417	24.898	ug/l #	39
81) trans-1,4-Dichloro-2-b...	11.079	75	52417	69.541	ug/l #	5

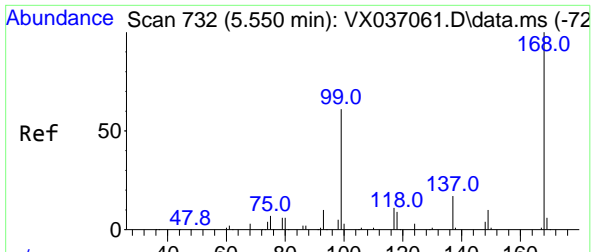
(#) = qualifier out of range (m) = manual integration (+) = signals summed

Data Path : Z:\voasrv\HPCHEM1\MSVOA_X\Data\VX082923\
 Data File : VX037371.D
 Acq On : 30 Aug 2023 05:35
 Operator : JC/MD
 Sample : 04198-10
 Misc : 5.0mL/MSVOA_X/WATER
 ALS Vial : 49 Sample Multiplier: 1

Instrument :
 MSVOA_X
 ClientSampleId :

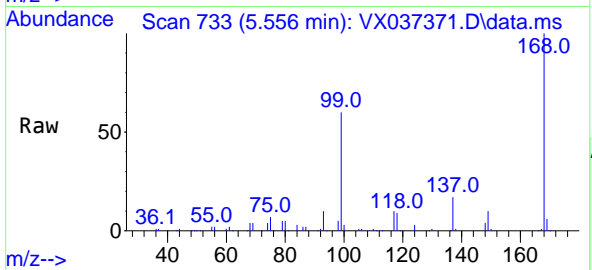
Quant Time: Aug 31 01:26:39 2023
 Quant Method : Z:\voasrv\HPCHEM1\MSVOA_X\Method\82X081723W.M
 Quant Title : SW846 8260
 QLast Update : Fri Aug 18 09:30:38 2023
 Response via : Initial Calibration



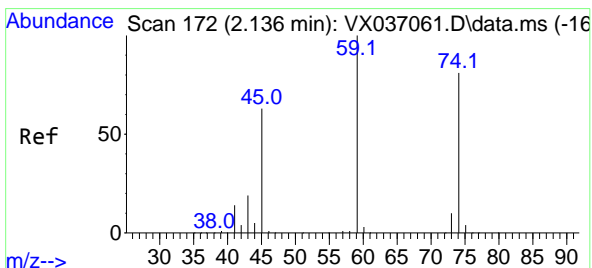
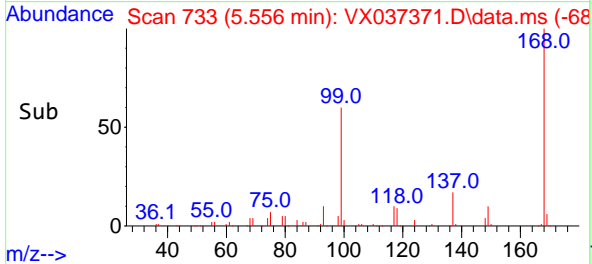
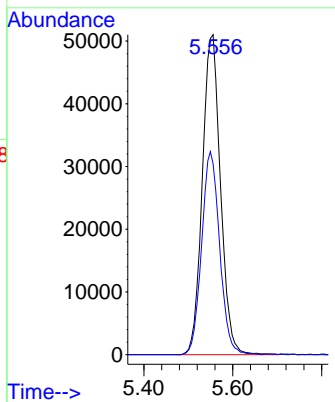


#1
 Pentafluorobenzene
 Concen: 50.000 ug/l
 RT: 5.556 min Scan# 71
 Delta R.T. 0.006 min
 Lab File: VX037371.D
 Acq: 30 Aug 2023 05:35

Instrument :
 MSVOA_X
 ClientSampleId :

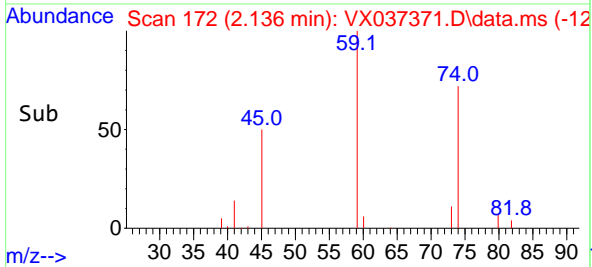
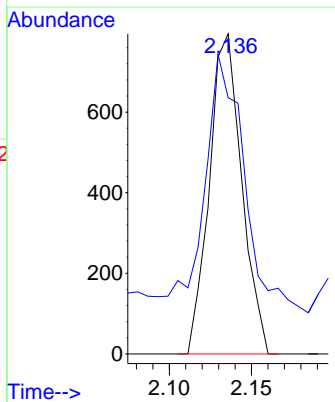
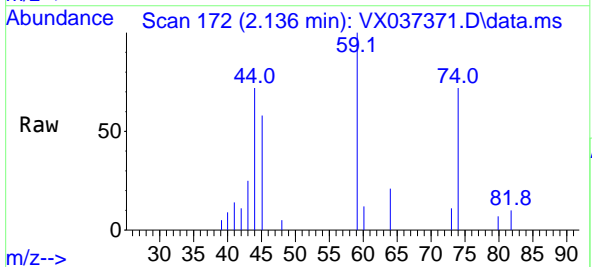


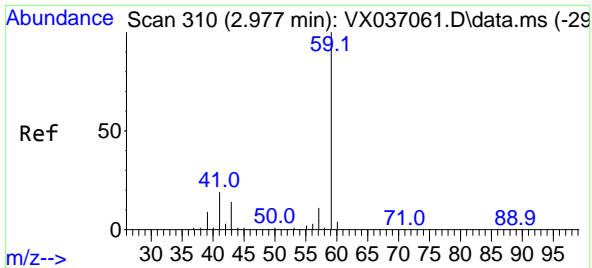
Tgt Ion:168 Resp: 145256
 Ion Ratio Lower Upper
 168 100
 99 59.7 56.6 85.0



#8
 Diethyl Ether
 Concen: 1.065 ug/l
 RT: 2.136 min Scan# 172
 Delta R.T. -0.000 min
 Lab File: VX037371.D
 Acq: 30 Aug 2023 05:35

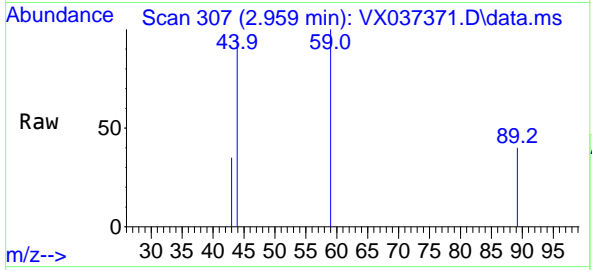
Tgt Ion: 74 Resp: 1085
 Ion Ratio Lower Upper
 74 100
 45 128.3 53.3 159.8



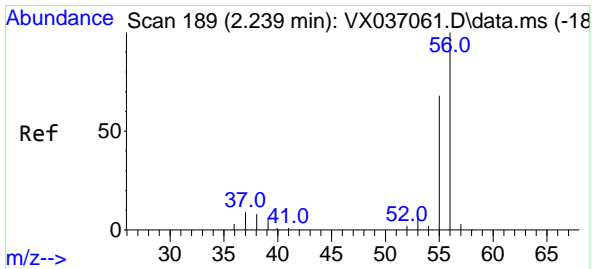
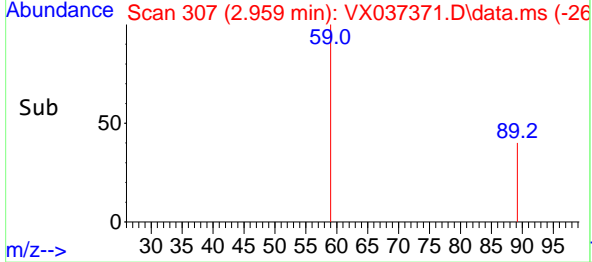
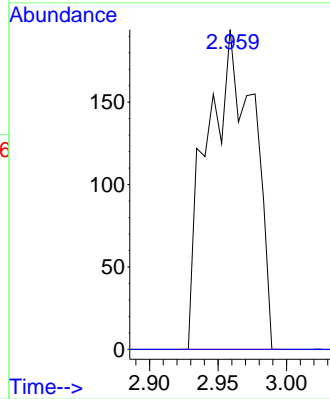


#11
 Tert butyl alcohol
 Concen: 0.932 ug/l
 RT: 2.959 min Scan# 307
 Delta R.T. -0.018 min
 Lab File: VX037371.D
 Acq: 30 Aug 2023 05:35

Instrument : MSVOA_X
 ClientSampleId :

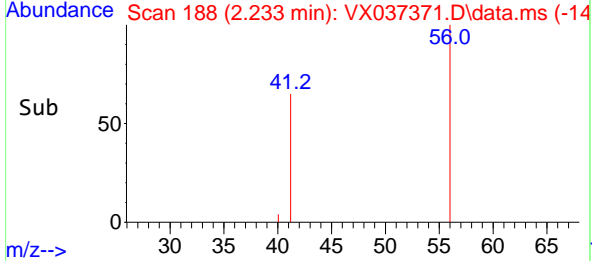
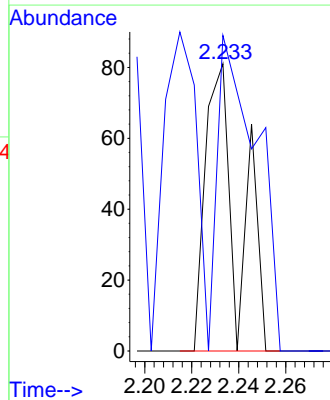
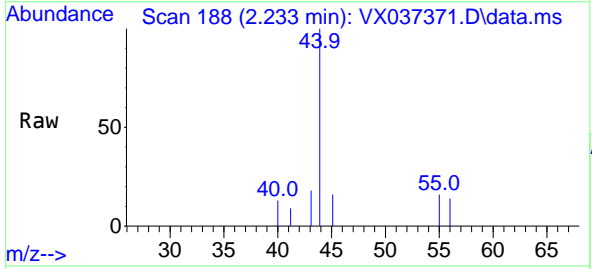


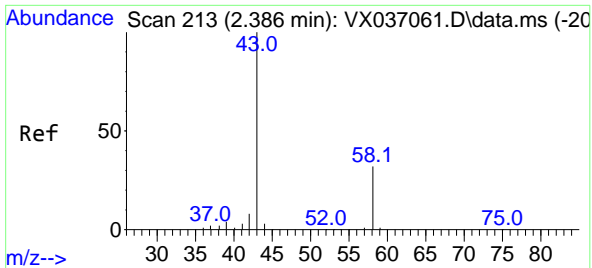
Tgt Ion: 59 Resp: 458
 Ion Ratio Lower Upper
 59 100
 57 0.0 6.0 9.0#



#13
 Acrolein
 Concen: 0.209 ug/l
 RT: 2.233 min Scan# 188
 Delta R.T. -0.006 min
 Lab File: VX037371.D
 Acq: 30 Aug 2023 05:35

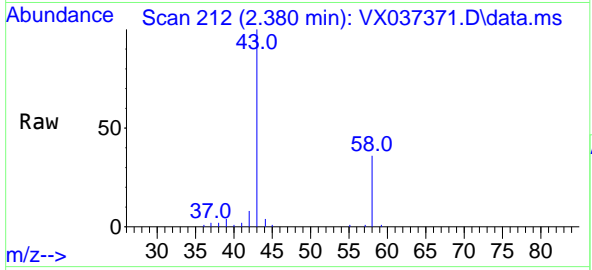
Tgt Ion: 56 Resp: 78
 Ion Ratio Lower Upper
 56 100
 55 132.1 57.1 85.7#



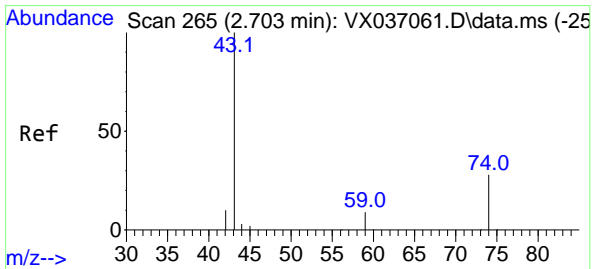
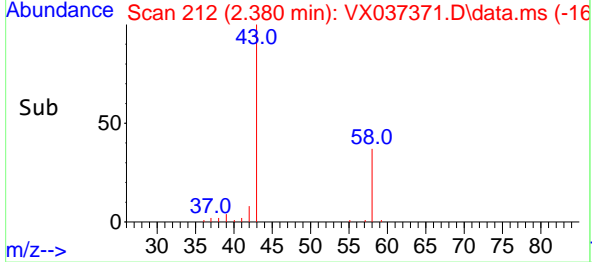
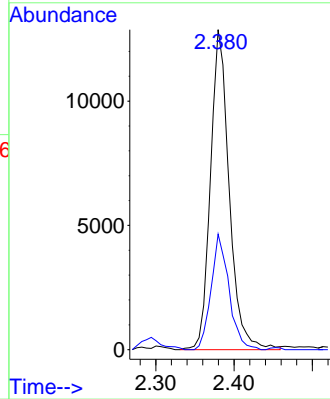


#16
 Acetone
 Concen: 26.131 ug/l
 RT: 2.380 min Scan# 213
 Delta R.T. -0.006 min
 Lab File: VX037371.D
 Acq: 30 Aug 2023 05:35

Instrument :
 MSVOA_X
 ClientSampleId :

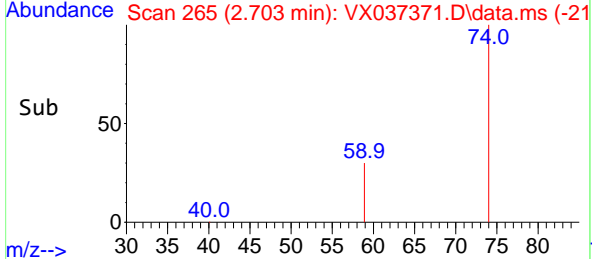
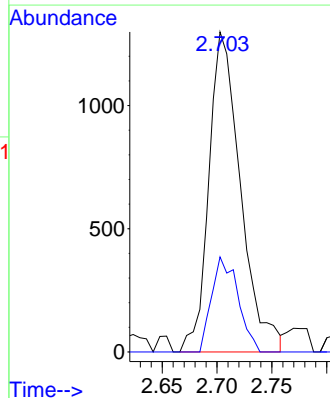
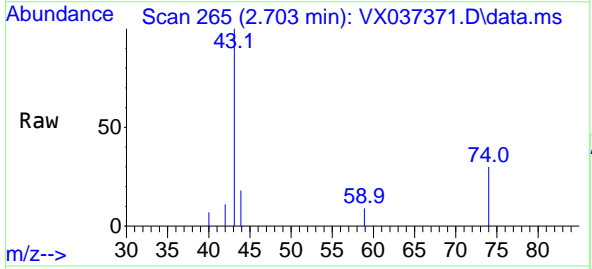


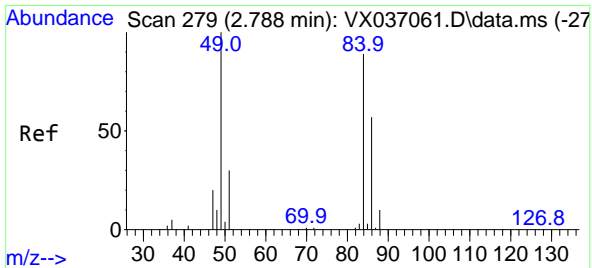
Tgt Ion: 43 Resp: 21408
 Ion Ratio Lower Upper
 43 100
 58 35.5 21.9 32.9#



#18
 Methyl Acetate
 Concen: 0.847 ug/l
 RT: 2.703 min Scan# 265
 Delta R.T. 0.000 min
 Lab File: VX037371.D
 Acq: 30 Aug 2023 05:35

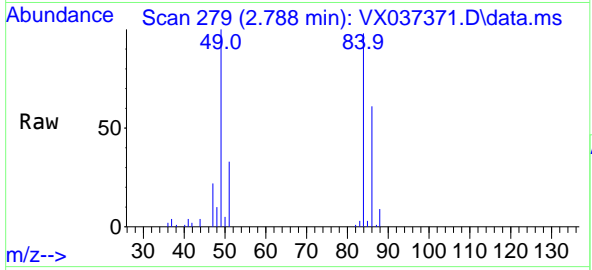
Tgt Ion: 43 Resp: 2613
 Ion Ratio Lower Upper
 43 100
 74 24.6 17.8 26.8





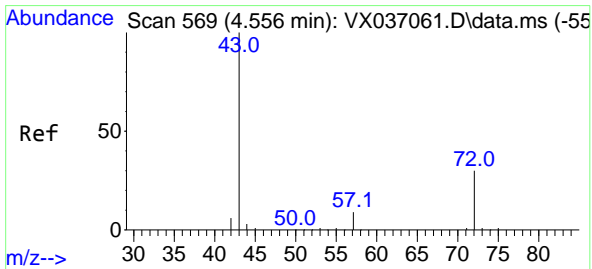
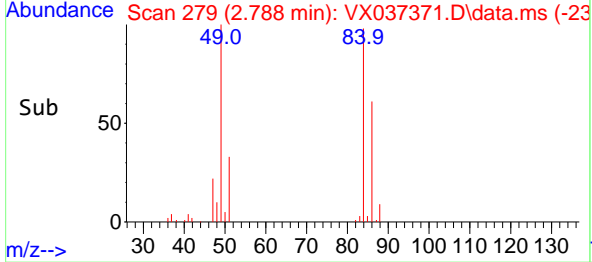
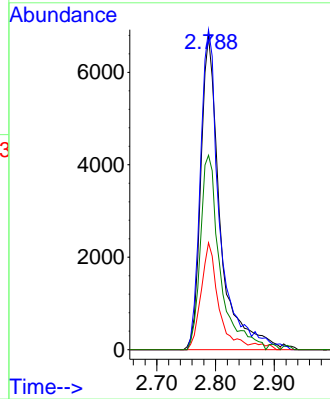
#20
 Methylene Chloride
 Concen: 8.499 ug/l
 RT: 2.788 min Scan# 21
 Delta R.T. 0.000 min
 Lab File: VX037371.D
 Acq: 30 Aug 2023 05:35

Instrument :
 MSVOA_X
 ClientSampleId :



Tgt Ion: 84 Resp: 15571

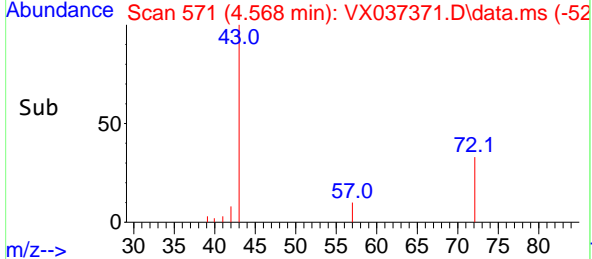
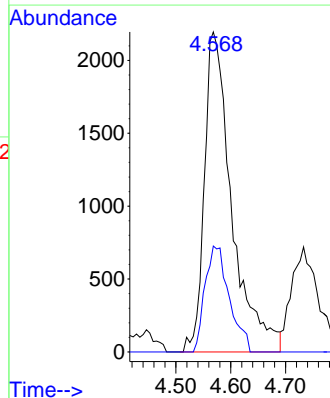
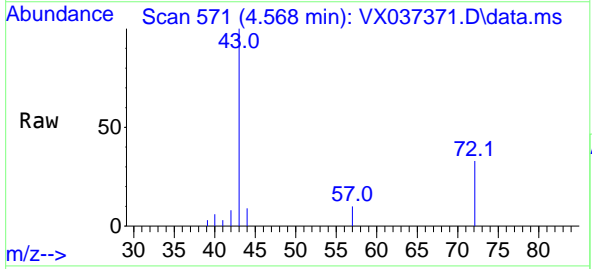
Ion	Ratio	Lower	Upper
84	100		
49	102.1	103.6	155.4#
51	34.1	33.8	50.6
86	62.0	49.4	74.0

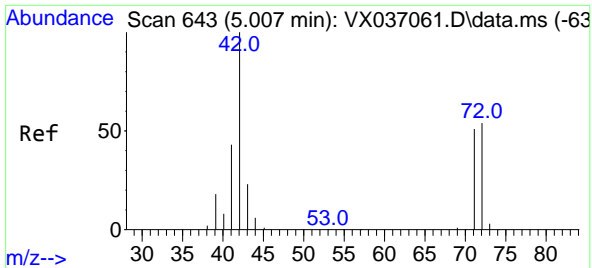


#25
 2-Butanone
 Concen: 6.177 ug/l
 RT: 4.568 min Scan# 571
 Delta R.T. 0.012 min
 Lab File: VX037371.D
 Acq: 30 Aug 2023 05:35

Tgt Ion: 43 Resp: 7619

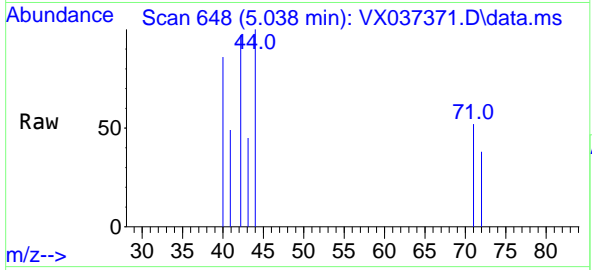
Ion	Ratio	Lower	Upper
43	100		
72	33.1	19.4	29.2#





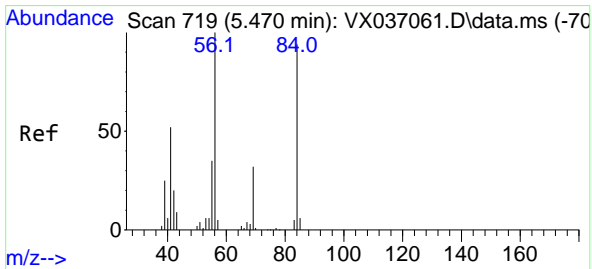
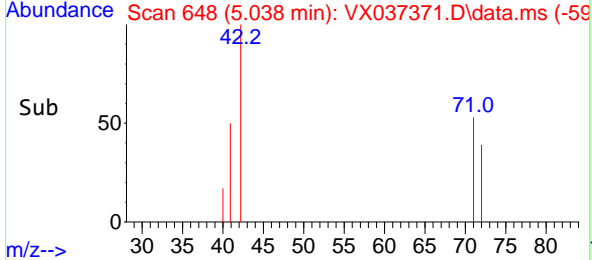
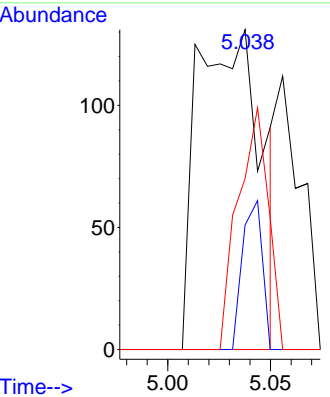
#29
 Tetrahydrofuran
 Concen: 0.357 ug/l
 RT: 5.038 min Scan# 643
 Delta R.T. 0.030 min
 Lab File: VX037371.D
 Acq: 30 Aug 2023 05:35

Instrument : MSVOA_X
 ClientSampleId :

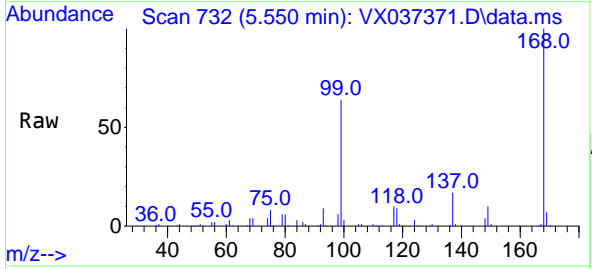


Tgt Ion: 42 Resp: 281

Ion	Ratio	Lower	Upper
42	100		
72	14.6	34.2	51.4#
71	36.3	32.2	48.2

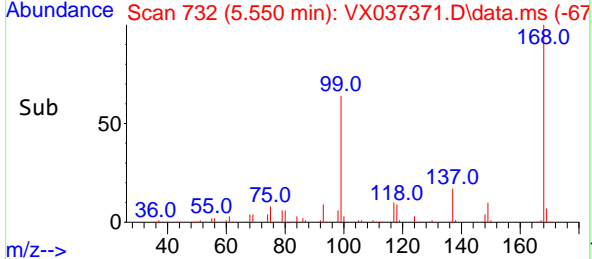
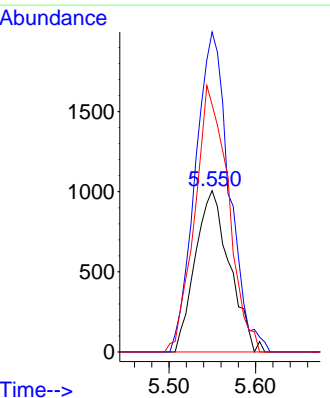


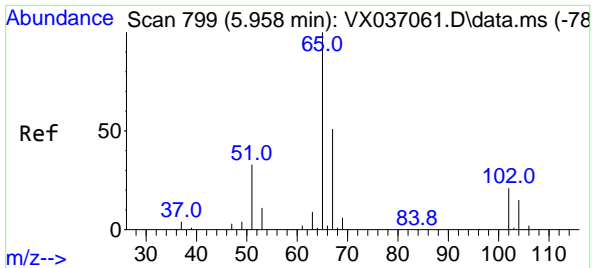
#31
 Cyclohexane
 Concen: 1.176 ug/l
 RT: 5.550 min Scan# 732
 Delta R.T. 0.079 min
 Lab File: VX037371.D
 Acq: 30 Aug 2023 05:35



Tgt Ion: 56 Resp: 2768

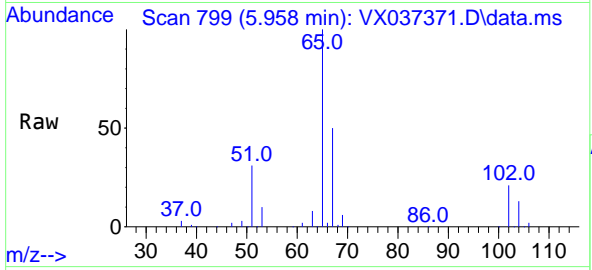
Ion	Ratio	Lower	Upper
56	100		
69	198.5	23.4	35.2#
84	153.4	65.9	98.9#



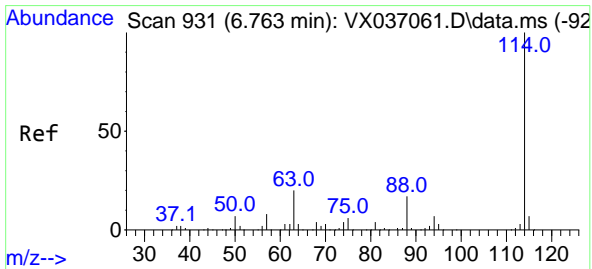
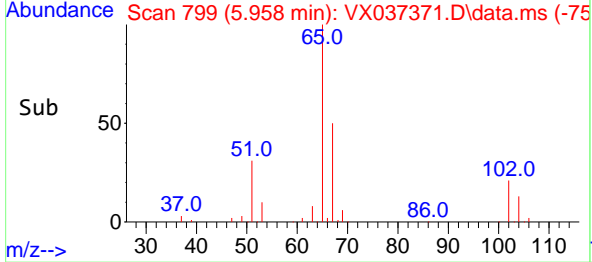
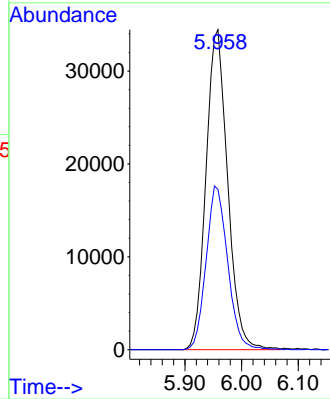


#33
 1,2-Dichloroethane-d4
 Concen: 43.592 ug/l
 RT: 5.958 min Scan# 799
 Delta R.T. -0.000 min
 Lab File: VX037371.D
 Acq: 30 Aug 2023 05:35

Instrument : MSVOA_X
 ClientSampleId :

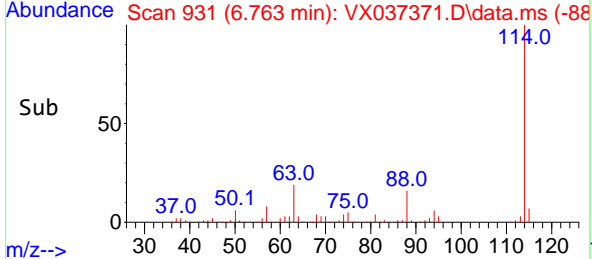
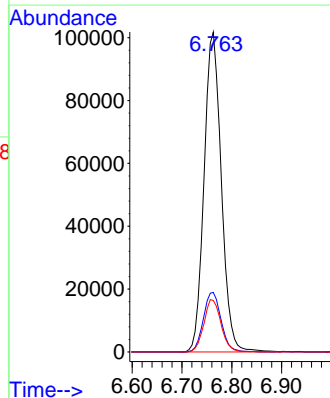
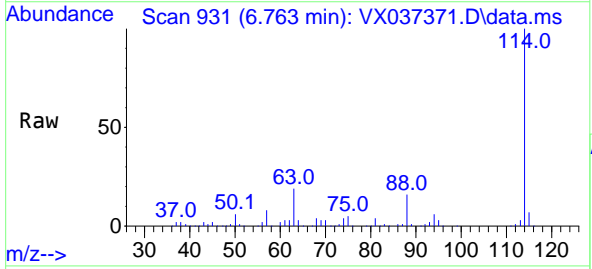


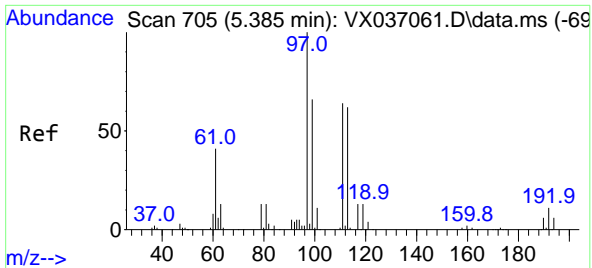
Tgt Ion: 65 Resp: 91287
 Ion Ratio Lower Upper
 65 100
 67 51.1 0.0 100.2



#34
 1,4-Difluorobenzene
 Concen: 50.000 ug/l
 RT: 6.763 min Scan# 931
 Delta R.T. -0.000 min
 Lab File: VX037371.D
 Acq: 30 Aug 2023 05:35

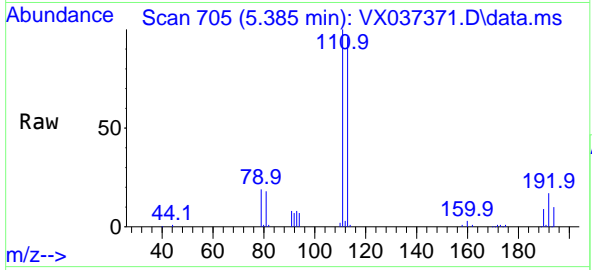
Tgt Ion: 114 Resp: 244567
 Ion Ratio Lower Upper
 114 100
 63 18.6 0.0 45.0
 88 16.1 0.0 36.6





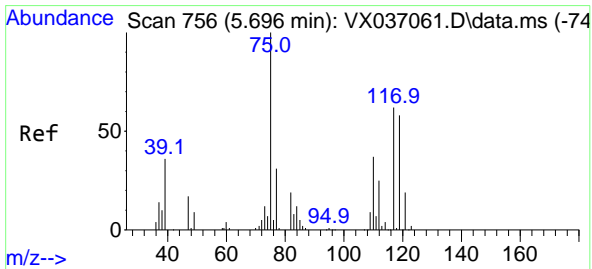
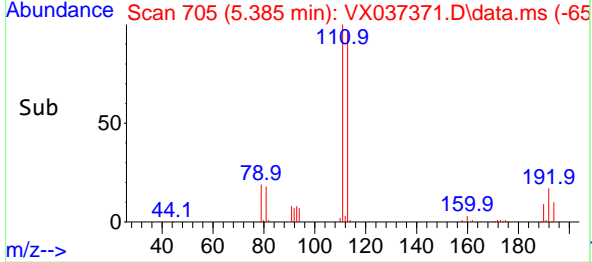
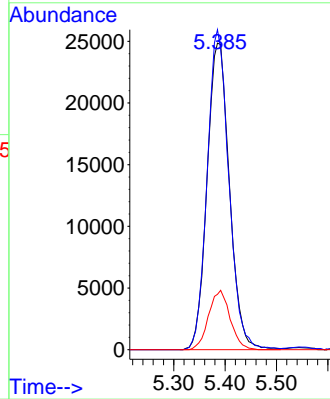
#35
 Dibromofluoromethane
 Concen: 46.402 ug/l
 RT: 5.385 min Scan# 705
 Delta R.T. -0.000 min
 Lab File: VX037371.D
 Acq: 30 Aug 2023 05:35

Instrument : MSVOA_X
 ClientSampleId :



Tgt Ion: 113 Resp: 75157

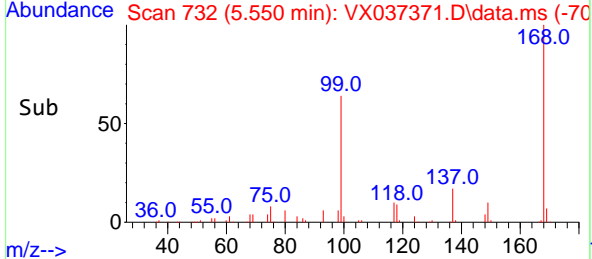
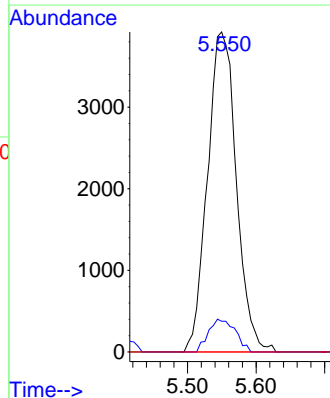
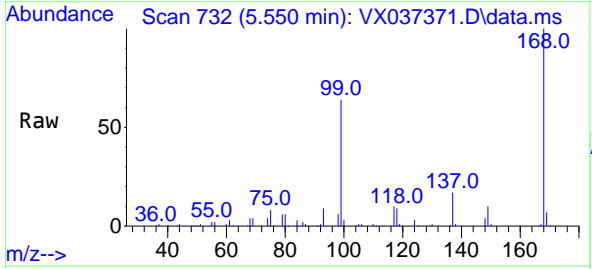
Ion	Ratio	Lower	Upper
113	100		
111	101.1	82.9	124.3
192	18.6	13.3	19.9

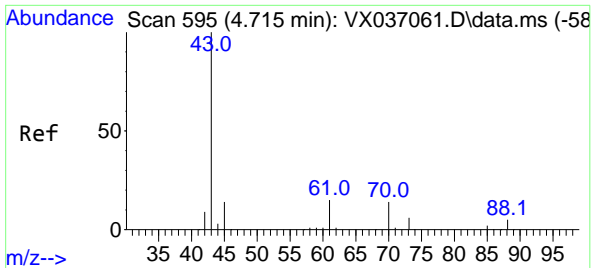


#36
 1,1-Dichloropropene
 Concen: 4.995 ug/l
 RT: 5.550 min Scan# 732
 Delta R.T. -0.146 min
 Lab File: VX037371.D
 Acq: 30 Aug 2023 05:35

Tgt Ion: 75 Resp: 11494

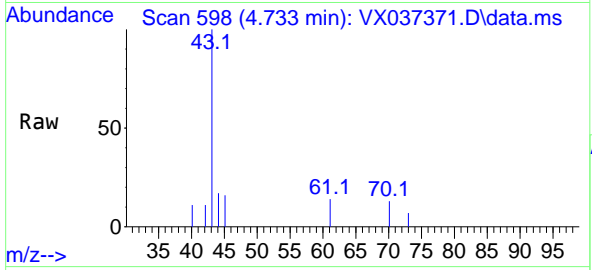
Ion	Ratio	Lower	Upper
75	100		
110	9.5	17.0	50.9#
77	0.0	24.7	37.1#





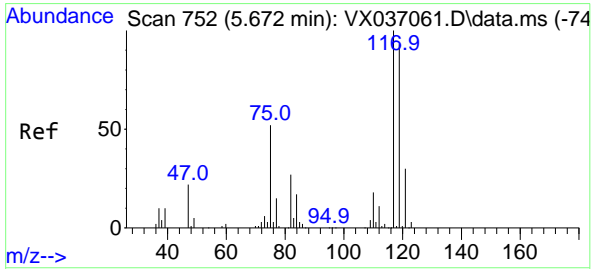
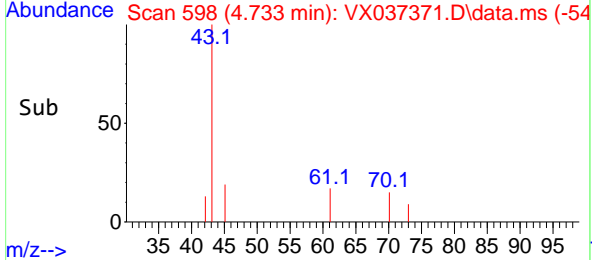
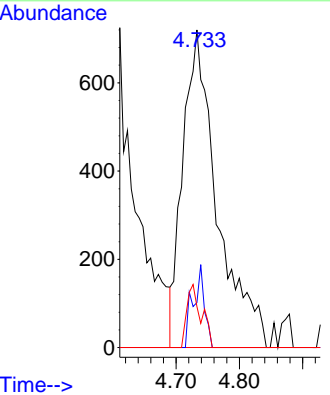
#37
 Ethyl Acetate
 Concen: 1.156 ug/l
 RT: 4.733 min Scan# 595
 Delta R.T. 0.018 min
 Lab File: VX037371.D
 Acq: 30 Aug 2023 05:35

Instrument : MSVOA_X
 ClientSampleId :

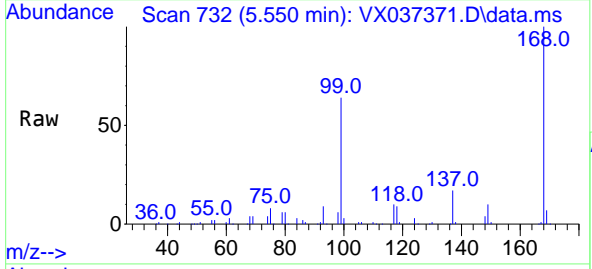


Tgt Ion: 43 Resp: 2717

Ion	Ratio	Lower	Upper
43	100		
61	8.6	10.6	16.0#
70	8.4	8.3	12.5

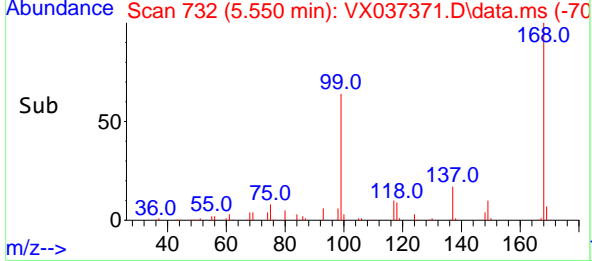
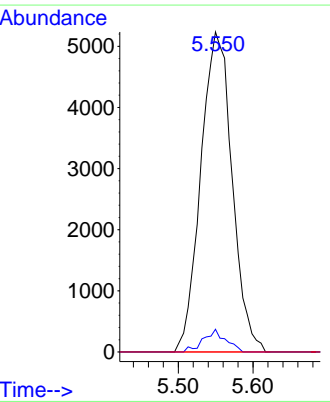


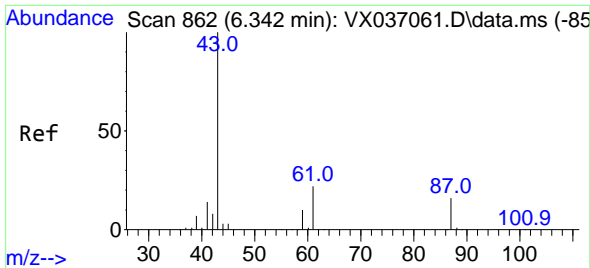
#38
 Carbon Tetrachloride
 Concen: 6.106 ug/l
 RT: 5.550 min Scan# 732
 Delta R.T. -0.122 min
 Lab File: VX037371.D
 Acq: 30 Aug 2023 05:35



Tgt Ion: 117 Resp: 15264

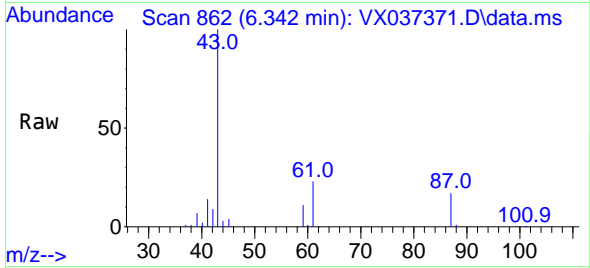
Ion	Ratio	Lower	Upper
117	100		
119	7.1	78.2	117.2#
121	0.0	24.4	36.6#



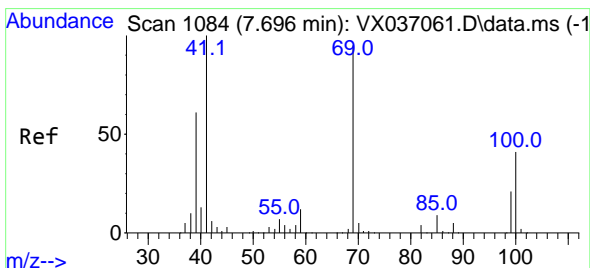
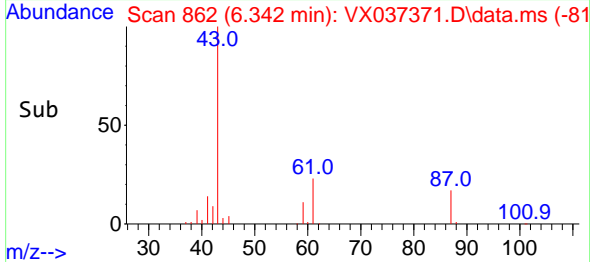
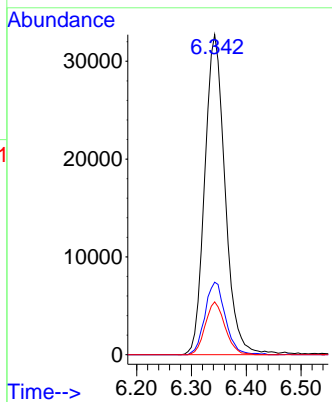


#43
 Isopropyl Acetate
 Concen: 22.530 ug/l
 RT: 6.342 min Scan# 80
 Delta R.T. 0.000 min
 Lab File: VX037371.D
 Acq: 30 Aug 2023 05:35

Instrument :
 MSVOA_X
 ClientSampleId :

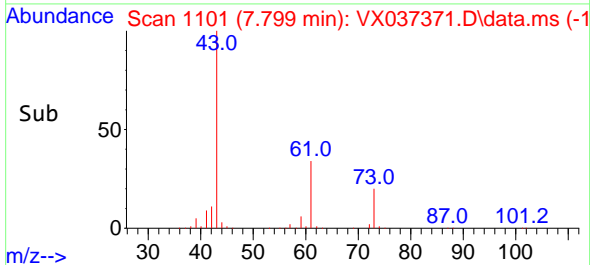
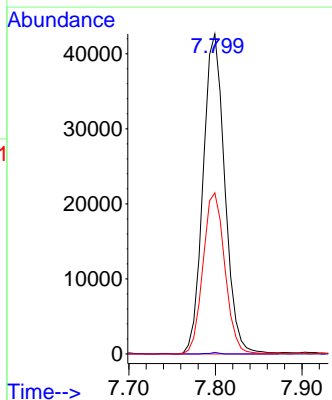
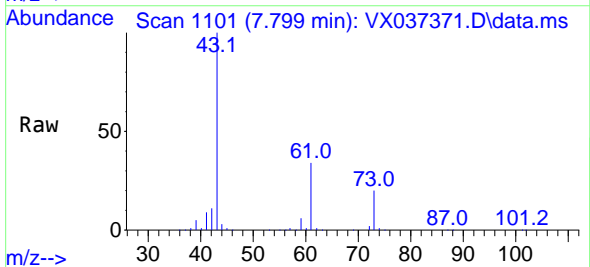


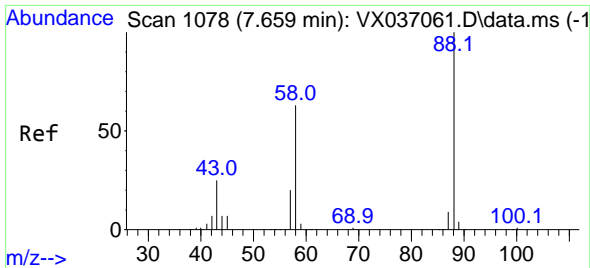
Tgt Ion: 43 Resp: 84081
 Ion Ratio Lower Upper
 43 100
 61 22.8 15.2 22.8#
 87 16.0 9.8 14.6#



#48
 Methyl methacrylate
 Concen: 40.813 ug/l
 RT: 7.799 min Scan# 1101
 Delta R.T. 0.104 min
 Lab File: VX037371.D
 Acq: 30 Aug 2023 05:35

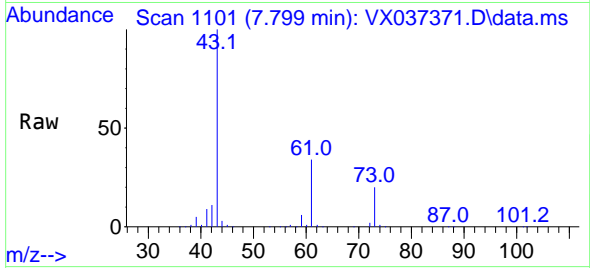
Tgt Ion: 41 Resp: 74279
 Ion Ratio Lower Upper
 41 100
 69 0.2 59.2 88.8#
 39 50.6 47.7 71.5



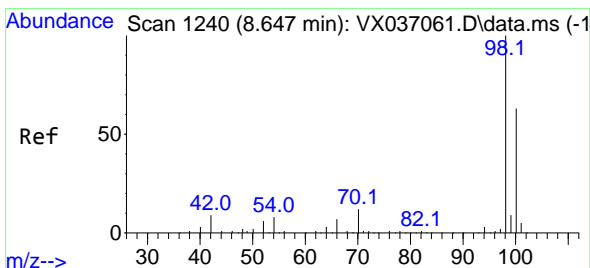
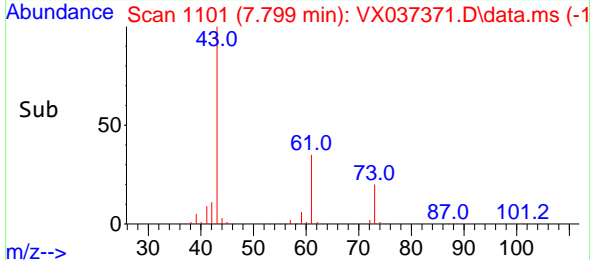
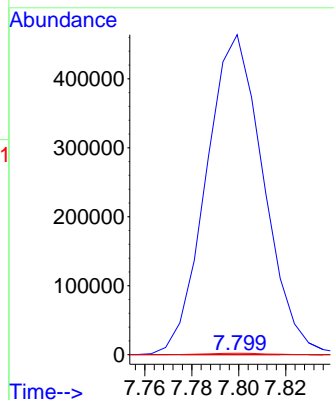


#49
 1,4-Dioxane
 Concen: 2.224 ug/l
 RT: 7.799 min Scan# 1101
 Delta R.T. 0.140 min
 Lab File: VX037371.D
 Acq: 30 Aug 2023 05:35

Instrument :
 MSVOA_X
 ClientSampleId :

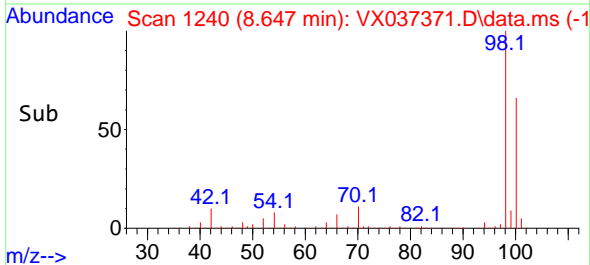
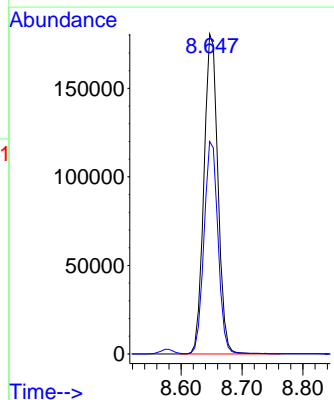
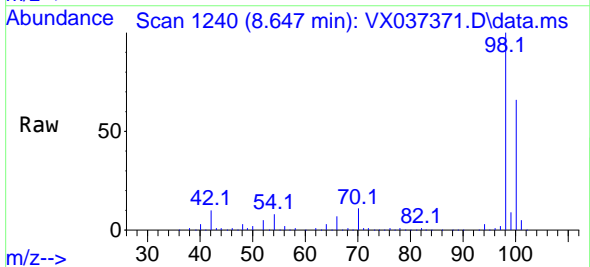


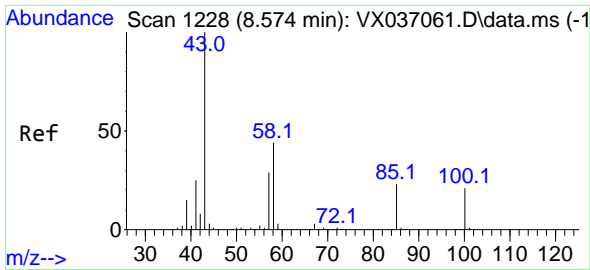
Tgt Ion: 88 Resp: 109
 Ion Ratio Lower Upper
 88 100
 43 729542.2 0.0 0.0#
 58 3386.2 60.1 90.1#



#50
 Toluene-d8
 Concen: 49.113 ug/l
 RT: 8.647 min Scan# 1240
 Delta R.T. 0.000 min
 Lab File: VX037371.D
 Acq: 30 Aug 2023 05:35

Tgt Ion: 98 Resp: 288556
 Ion Ratio Lower Upper
 98 100
 100 66.4 53.1 79.7

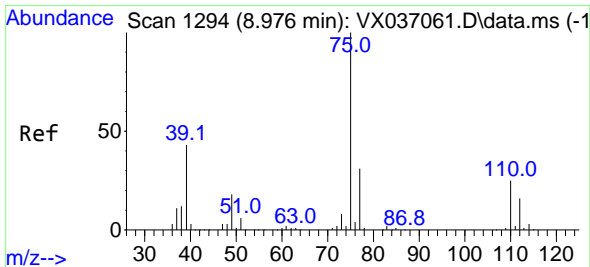
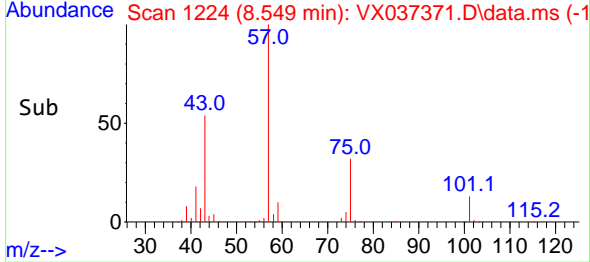
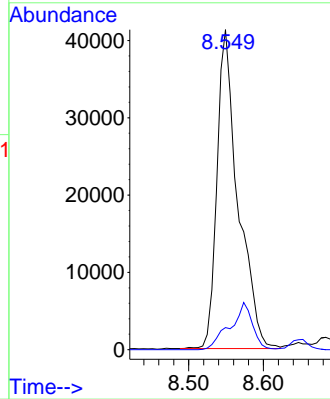
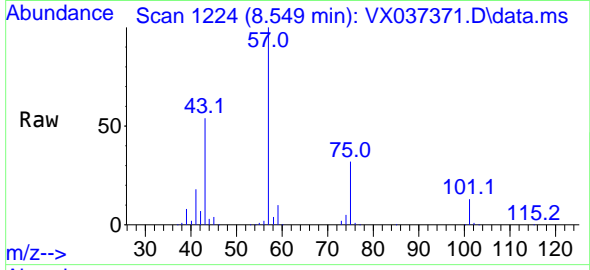




#51
 4-Methyl-2-Pentanone
 Concen: 35.638 ug/l
 RT: 8.549 min Scan# 11
 Delta R.T. -0.024 min
 Lab File: VX037371.D
 Acq: 30 Aug 2023 05:35

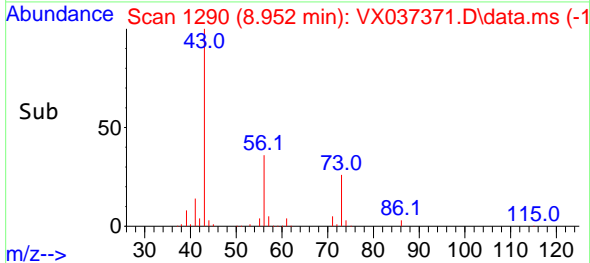
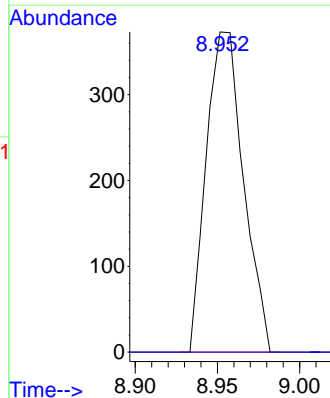
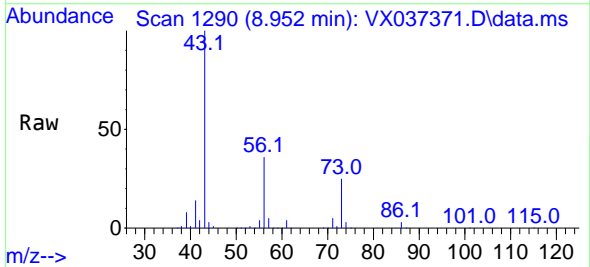
Instrument :
 MSVOA_X
 ClientSampleId :

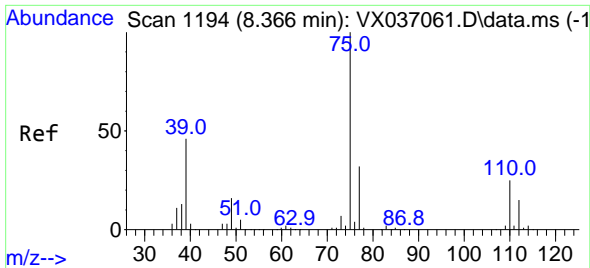
Tgt Ion: 43 Resp: 80761
 Ion Ratio Lower Upper
 43 100
 58 0.0 30.4 45.6#



#53
 t-1,3-Dichloropropene
 Concen: 0.225 ug/l
 RT: 8.952 min Scan# 1290
 Delta R.T. -0.024 min
 Lab File: VX037371.D
 Acq: 30 Aug 2023 05:35

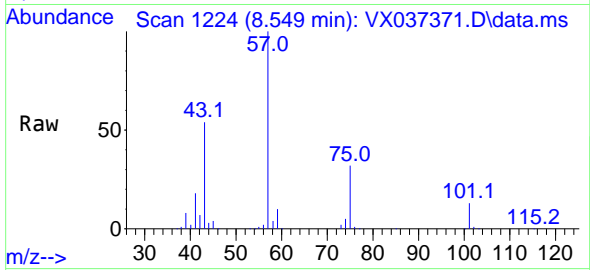
Tgt Ion: 75 Resp: 589
 Ion Ratio Lower Upper
 75 100
 77 0.0 25.7 38.5#



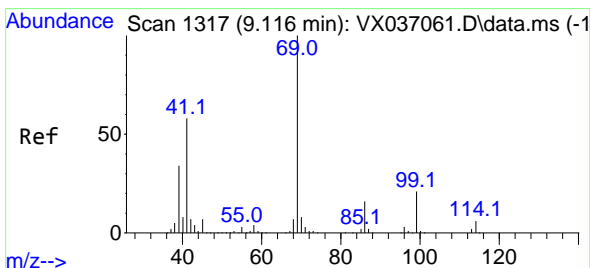
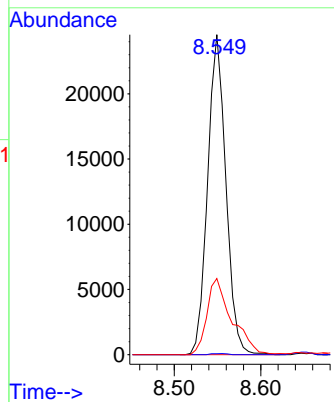
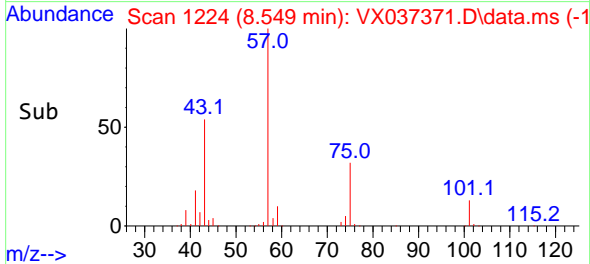


#54
 cis-1,3-Dichloropropene
 Concen: 12.708 ug/l
 RT: 8.549 min Scan# 1194
 Delta R.T. 0.183 min
 Lab File: VX037371.D
 Acq: 30 Aug 2023 05:35

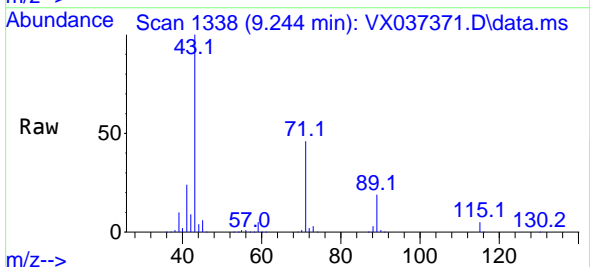
Instrument : MSVOA_X
 ClientSampleId :



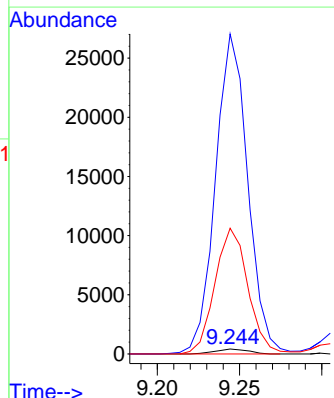
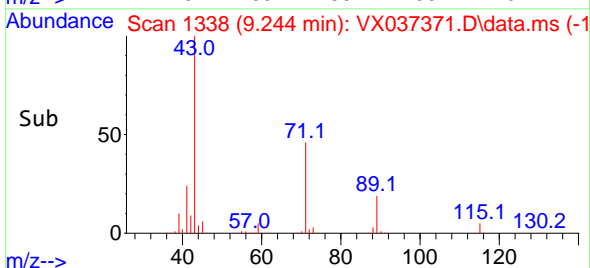
Tgt Ion: 75 Resp: 35903
 Ion Ratio Lower Upper
 75 100
 77 0.3 25.3 37.9#
 39 23.8 46.7 70.1#

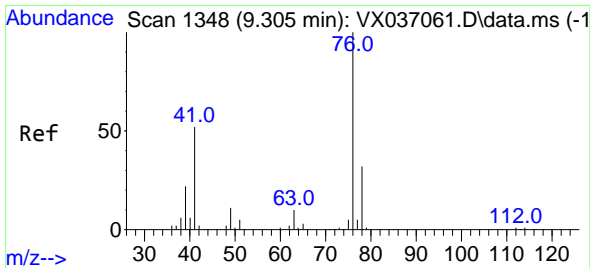


#56
 Ethyl methacrylate
 Concen: 0.206 ug/l
 RT: 9.244 min Scan# 1338
 Delta R.T. 0.128 min
 Lab File: VX037371.D
 Acq: 30 Aug 2023 05:35



Tgt Ion: 69 Resp: 572
 Ion Ratio Lower Upper
 69 100
 41 6475.0 56.8 85.2#
 39 2599.1 32.0 48.0#

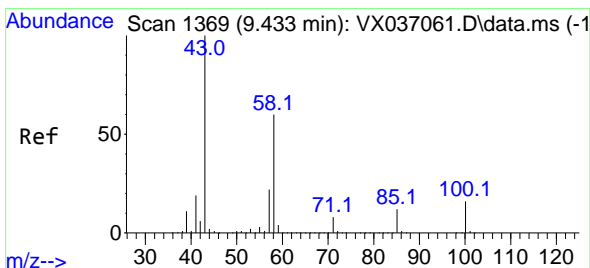
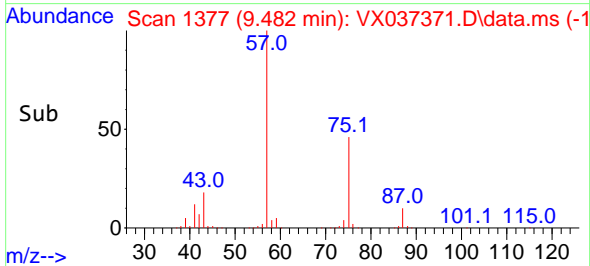
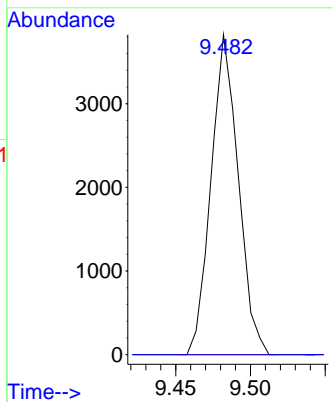
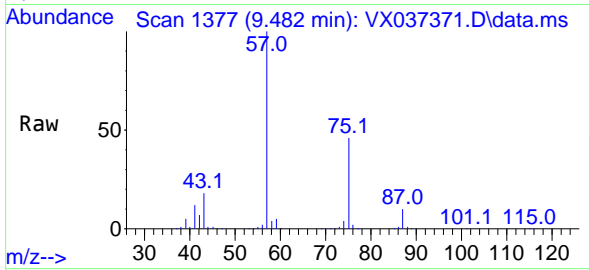




#57
 1,3-Dichloropropane
 Concen: 1.620 ug/l
 RT: 9.482 min Scan# 1377
 Delta R.T. 0.177 min
 Lab File: VX037371.D
 Acq: 30 Aug 2023 05:35

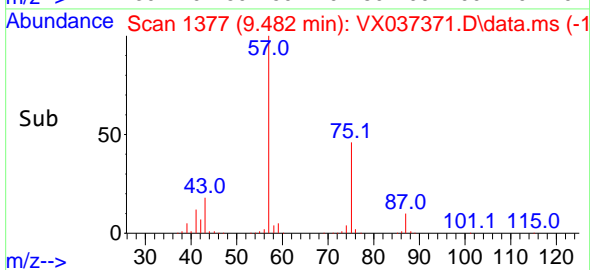
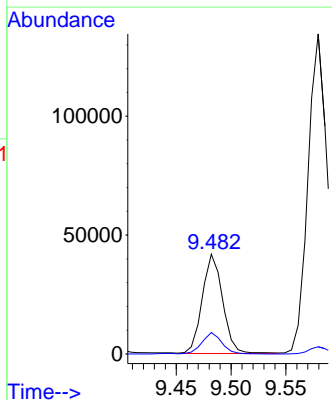
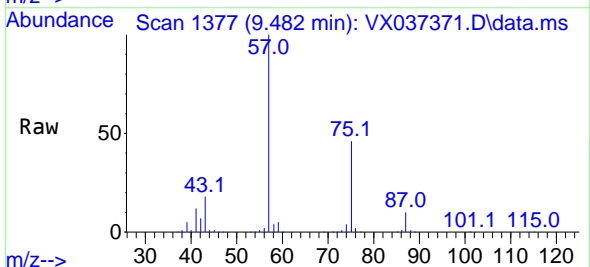
Instrument : MSVOA_X
 ClientSampleId :

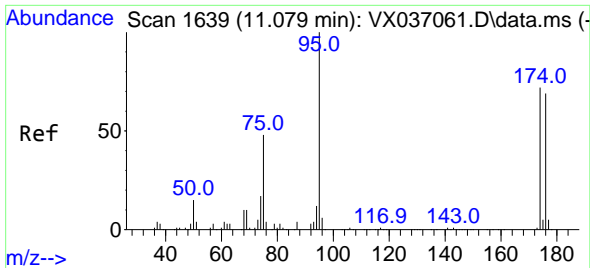
Tgt Ion: 76 Resp: 4849
 Ion Ratio Lower Upper
 76 100
 78 0.0 26.1 39.1#



#59
 2-Hexanone
 Concen: 31.321 ug/l
 RT: 9.482 min Scan# 1377
 Delta R.T. 0.049 min
 Lab File: VX037371.D
 Acq: 30 Aug 2023 05:35

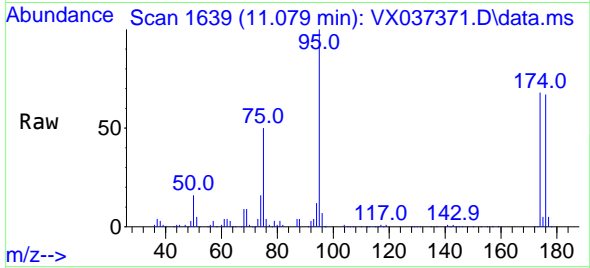
Tgt Ion: 43 Resp: 54119
 Ion Ratio Lower Upper
 43 100
 58 21.0 26.2 78.5#



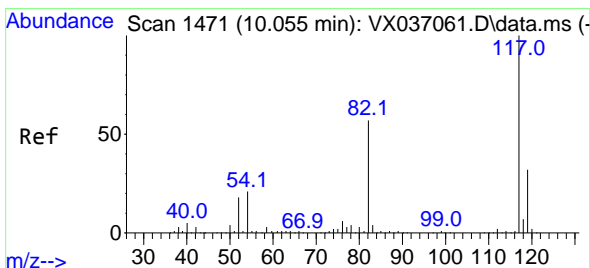
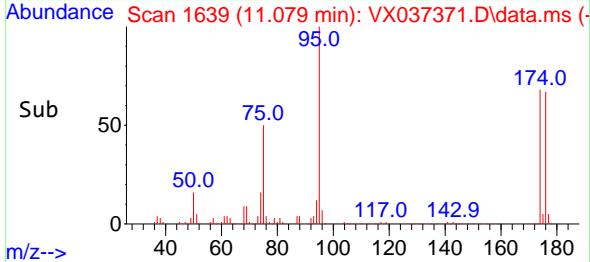
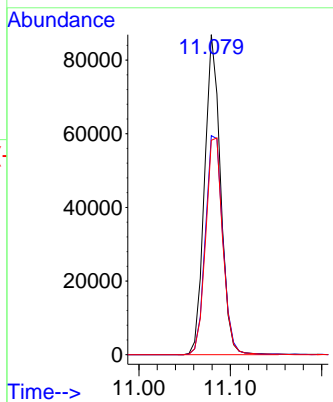


#62
 4-Bromofluorobenzene
 Concen: 45.669 ug/l
 RT: 11.079 min Scan# 1639
 Delta R.T. -0.000 min
 Lab File: VX037371.D
 Acq: 30 Aug 2023 05:35

Instrument : MSVOA_X
 ClientSampleId :

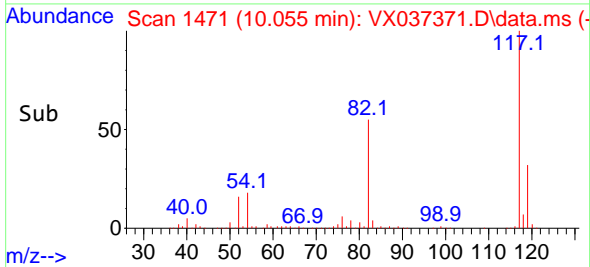
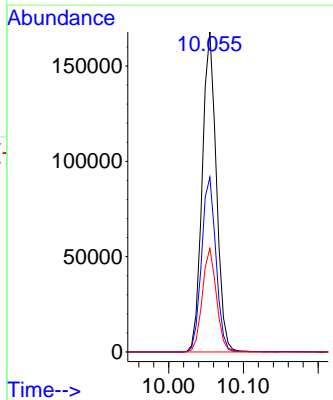
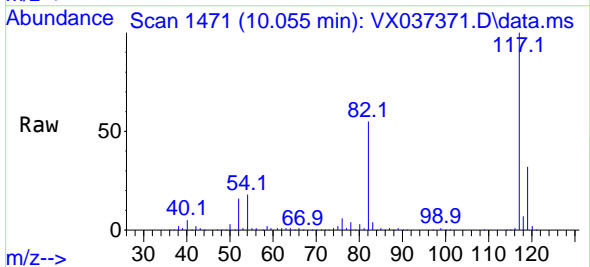


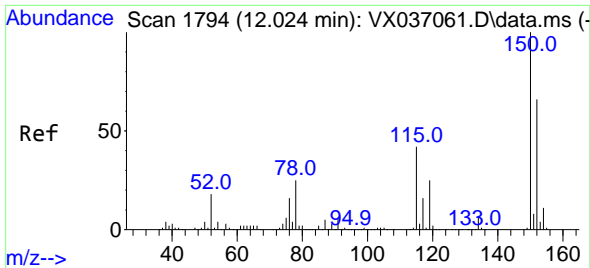
Tgt Ion: 95 Resp: 105445
 Ion Ratio Lower Upper
 95 100
 174 74.7 0.0 135.6
 176 72.6 0.0 131.0



#63
 Chlorobenzene-d5
 Concen: 50.000 ug/l
 RT: 10.055 min Scan# 1471
 Delta R.T. 0.000 min
 Lab File: VX037371.D
 Acq: 30 Aug 2023 05:35

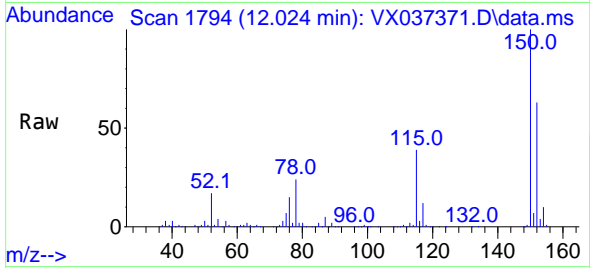
Tgt Ion: 117 Resp: 220673
 Ion Ratio Lower Upper
 117 100
 82 54.6 46.2 69.4
 119 32.4 25.5 38.3



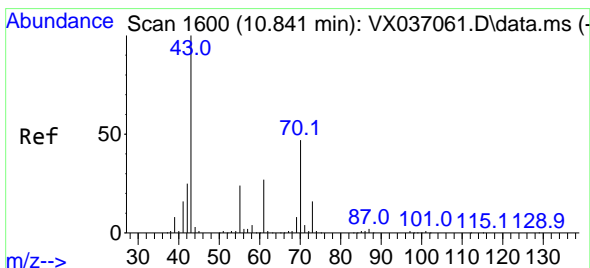
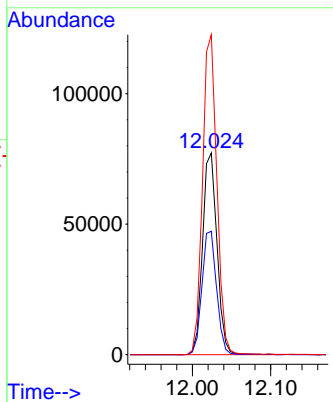
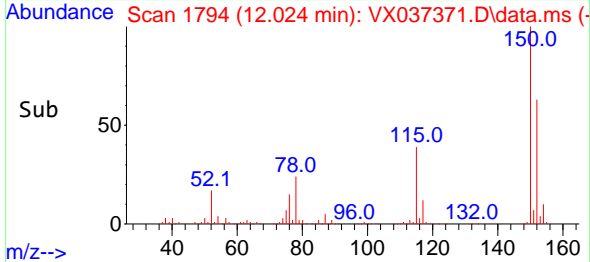


#72
 1,4-Dichlorobenzene-d4
 Concen: 50.000 ug/l
 RT: 12.024 min Scan# 11
 Delta R.T. -0.000 min
 Lab File: VX037371.D
 Acq: 30 Aug 2023 05:35

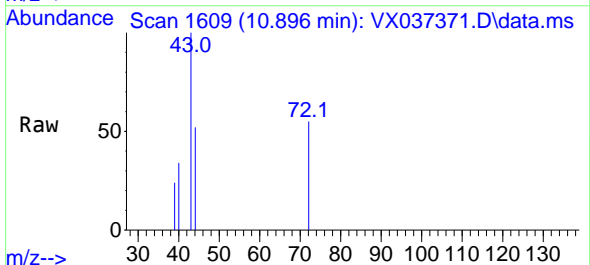
Instrument :
 MSVOA_X
 ClientSampleId :



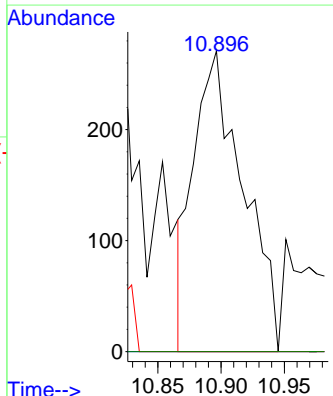
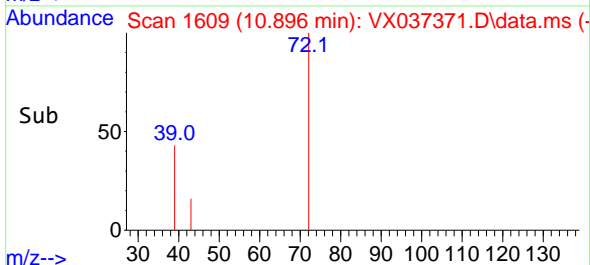
Tgt Ion:152 Resp: 98855
 Ion Ratio Lower Upper
 152 100
 115 62.0 43.3 129.9
 150 157.0 0.0 345.0

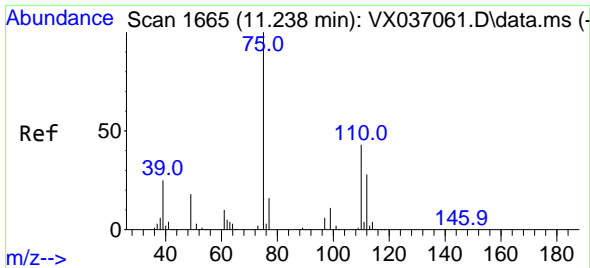


#74
 N-ethyl acetate
 Concen: 0.265 ug/l
 RT: 10.896 min Scan# 1609
 Delta R.T. 0.055 min
 Lab File: VX037371.D
 Acq: 30 Aug 2023 05:35



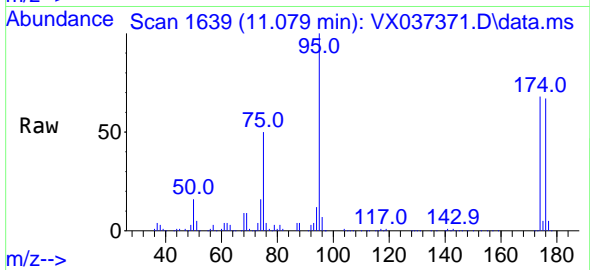
Tgt Ion: 43 Resp: 740
 Ion Ratio Lower Upper
 43 100
 70 0.0 32.9 49.3#
 55 0.0 19.3 28.9#
 61 0.0 18.8 28.2#



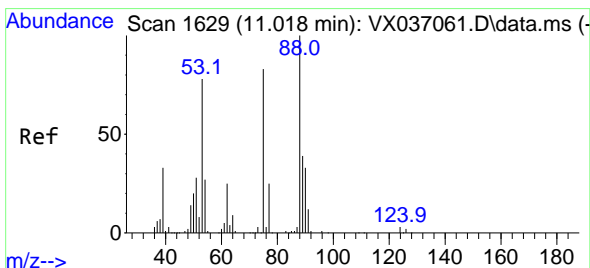
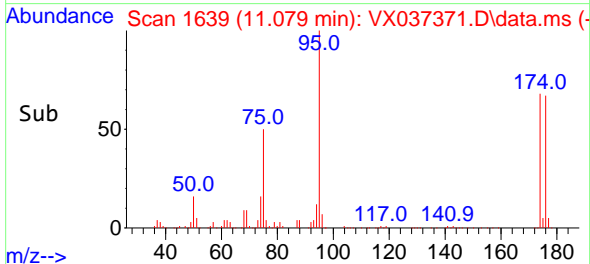
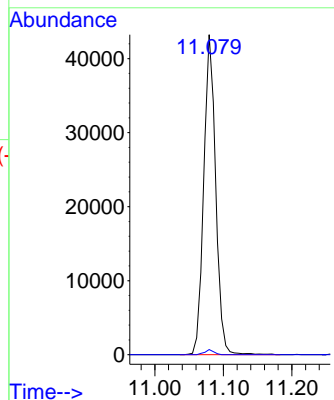


#76
 1,2,3-Trichloropropane
 Concen: 24.898 ug/l
 RT: 11.079 min Scan# 1639
 Delta R.T. -0.159 min
 Lab File: VX037371.D
 Acq: 30 Aug 2023 05:35

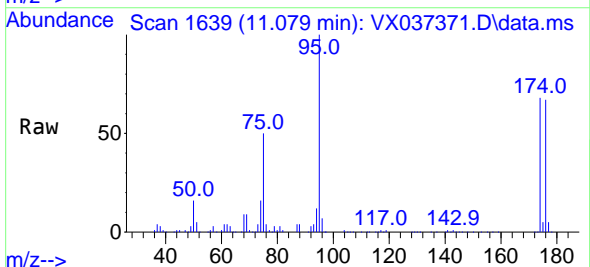
Instrument : MSVOA_X
 ClientSampleId :



Tgt Ion: 75 Resp: 52417
 Ion Ratio Lower Upper
 75 100
 77 1.2 19.1 57.5#



#81
 trans-1,4-Dichloro-2-butene
 Concen: 69.541 ug/l
 RT: 11.079 min Scan# 1639
 Delta R.T. 0.061 min
 Lab File: VX037371.D
 Acq: 30 Aug 2023 05:35



Tgt Ion: 75 Resp: 52417
 Ion Ratio Lower Upper
 75 100
 53 0.0 90.5 135.7#
 89 0.1 36.9 55.3#

