

Data Path : Z:\VOASRV\HPCHEM1\MSVOA X\DATA\VX083019\
 Data File : VX011936.D
 Acq On : 31 Aug 2019 05:36
 Operator : SY/SP
 Sample : K4493-11
 Misc : 5.47µ/5.0mL/MSVOA X/SOIL
 ALS Vial : 1 Sample Multiplier: 1

Instrument :
 MSVOA_X
 ClientSampleId :
 T9-12-13-K1-(0)

Quant Time: Aug 31 06:25:15 2019
 Quant Method : Z:\VOASRV\HPCHEM1\MSVOA_X\METHOD\82X082919S.M
 Quant Title : SW846 8260
 QLast Update : Fri Aug 30 01:59:05 2019
 Response via : Initial Calibration

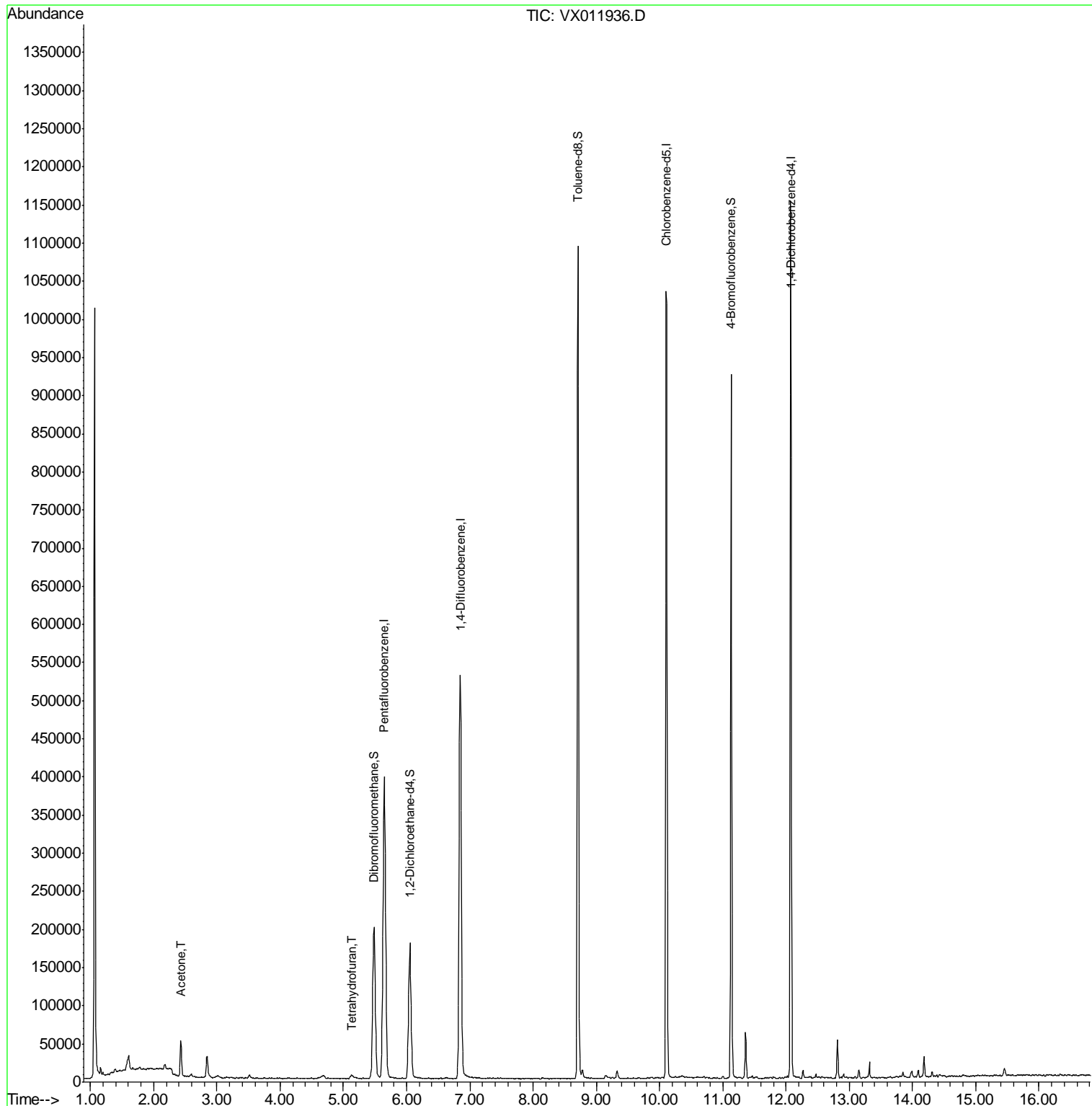
Internal Standards	R.T.	QIon	Response	Conc	Units	Dev(Min)
1) Pentafluorobenzene	5.65	168	420061	50.00	µg/l	0.00
34) 1,4-Difluorobenzene	6.85	114	562065	50.00	µg/l	0.00
63) Chlorobenzene-d5	10.11	117	490709	50.00	µg/l	0.00
72) 1,4-Dichlorobenzene-d4	12.07	152	243156	50.00	µg/l	0.00
System Monitoring Compounds						
33) 1,2-Dichloroethane-d4	6.05	65	175177	43.53	µg/l	0.00
Spiked Amount	50.000		Recovery	=	87.06%	
35) Dibromofluoromethane	5.48	113	162041	44.96	µg/l	0.00
Spiked Amount	50.000		Recovery	=	89.92%	
50) Toluene-d8	8.71	98	637047	49.45	µg/l	0.00
Spiked Amount	50.000		Recovery	=	98.90%	
62) 4-Bromofluorobenzene	11.14	95	229285	40.57	µg/l	0.00
Spiked Amount	50.000		Recovery	=	81.14%	
Target Compounds						
16) Acetone	2.43	43	49951	57.685	µg/l	96
29) Tetrahydrofuran	5.13	42	4533	5.758	µg/l	92

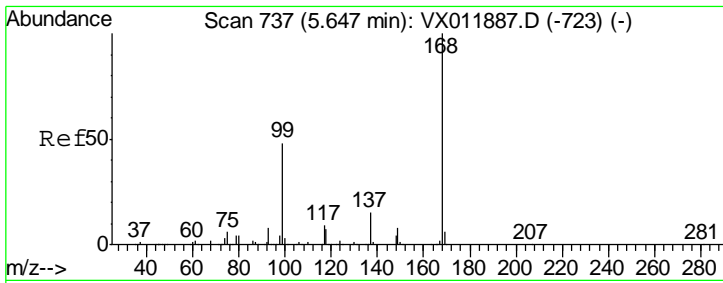
(#) = qualifier out of range (m) = manual integration (+) = signals summed

Data Path : Z:\VOASRV\HPCHEM1\MSVOA X\DATA\VX083019\
 Data File : VX011936.D
 Acq On : 31 Aug 2019 05:36
 Operator : SY/SP
 Sample : K4493-11
 Misc : 5.47µ/5.0mL/MSVOA X/SOIL
 ALS Vial : 1 Sample Multiplier: 1

Instrument :
 MSVOA_X
 ClientSampled :
 T9-12-13-K1-(0)

Quant Time: Aug 31 06:25:15 2019
 Quant Method : Z:\VOASRV\HPCHEM1\MSVOA_X\METHOD\82X082919S.M
 Quant Title : SW846 8260
 QLast Update : Fri Aug 30 01:59:05 2019
 Response via : Initial Calibration

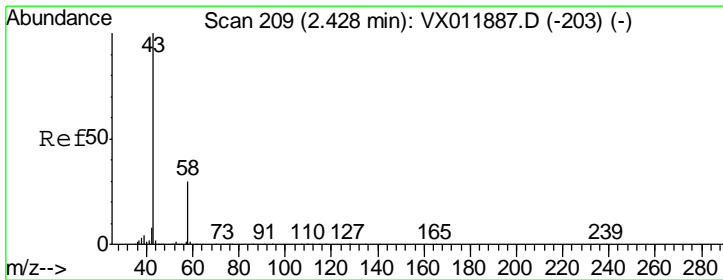
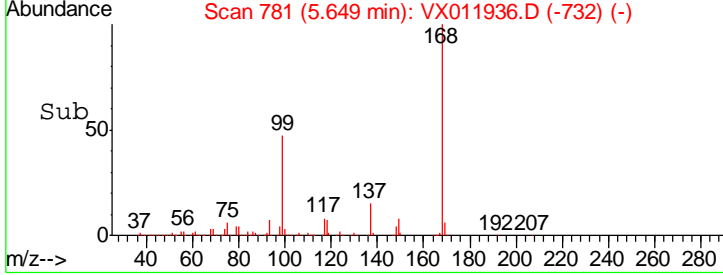
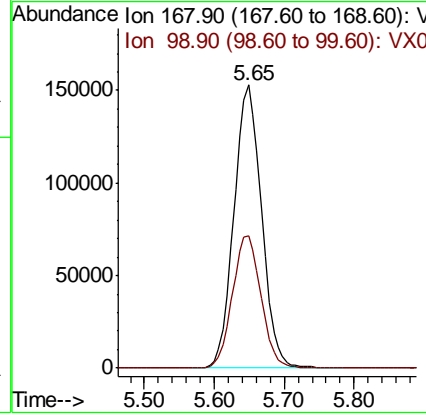
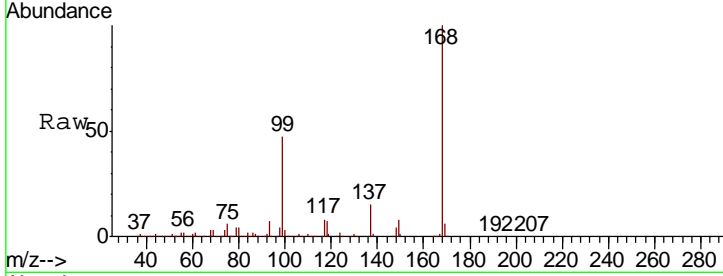




#1
 Pentafluorobenzene
 Concen: 50.000 ug/l
 RT: 5.65 min Scan# 781
 Delta R.T. 0.00 min
 Lab File: VX011936.D
 Acq: 31 Aug 2019 05:36

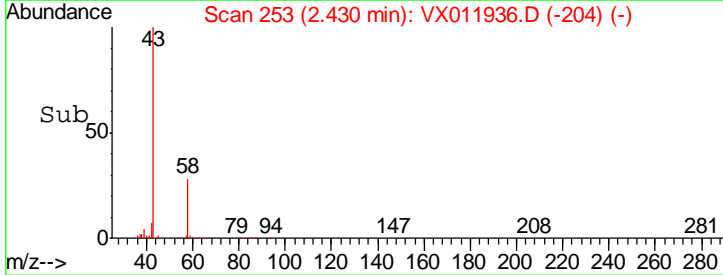
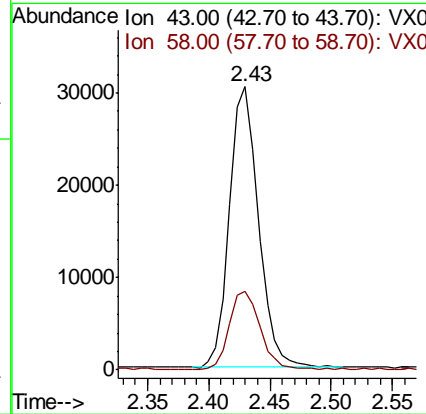
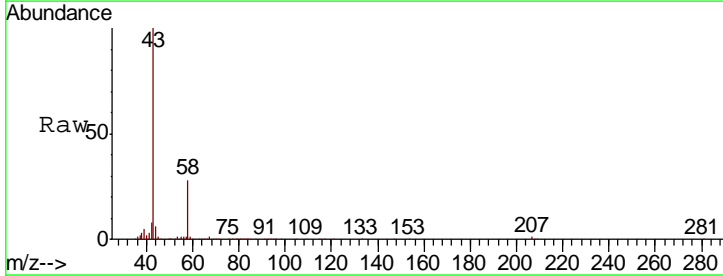
Instrument :
 MSVOA_X
ClientSampled :
 T9-12-13-K1-(0)

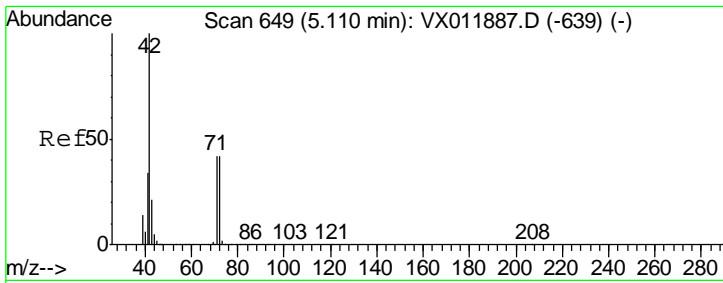
Tgt Ion	Resp	Lower	Upper
168	100		
99	46.5	38.4	57.6



#16
 Acetone
 Concen: 57.685 ug/l
 RT: 2.43 min Scan# 253
 Delta R.T. 0.00 min
 Lab File: VX011936.D
 Acq: 31 Aug 2019 05:36

Tgt Ion	Resp	Lower	Upper
43	100		
58	27.8	23.8	35.8

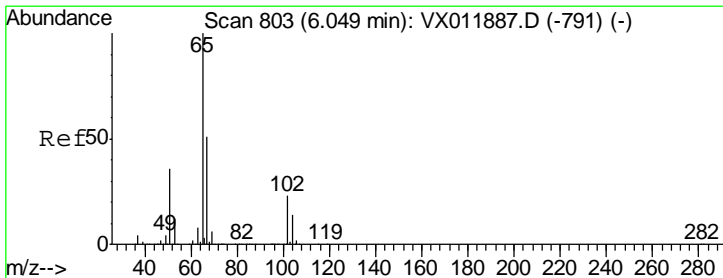
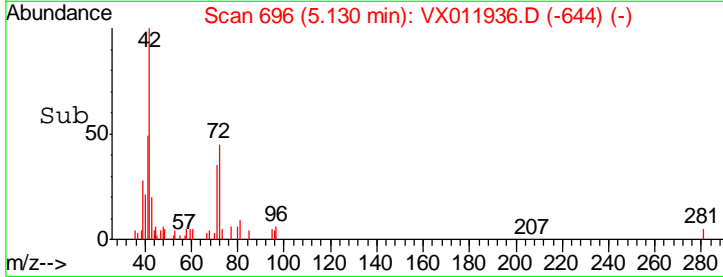
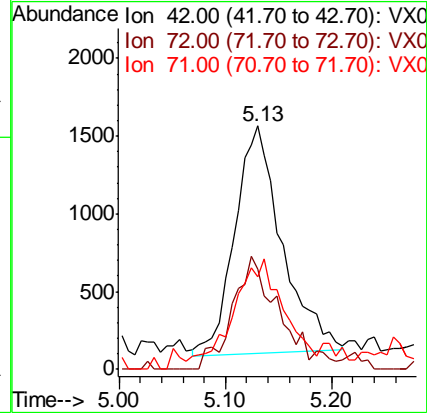
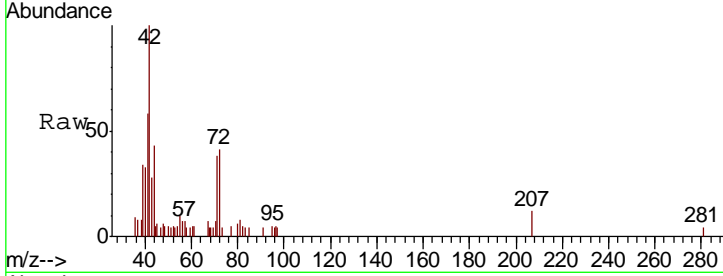




#29
 Tetrahydrofuran
 Concen: 5.758 ug/l
 RT: 5.13 min Scan# 696
 Delta R.T. 0.02 min
 Lab File: VX011936.D
 Acq: 31 Aug 2019 05:36

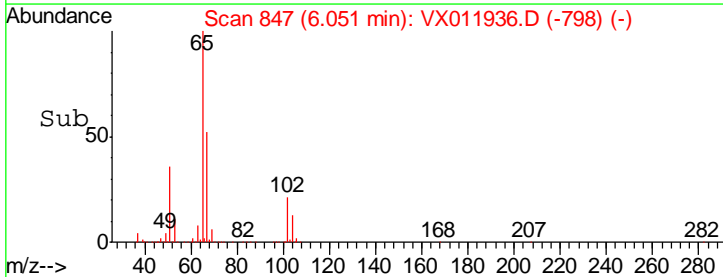
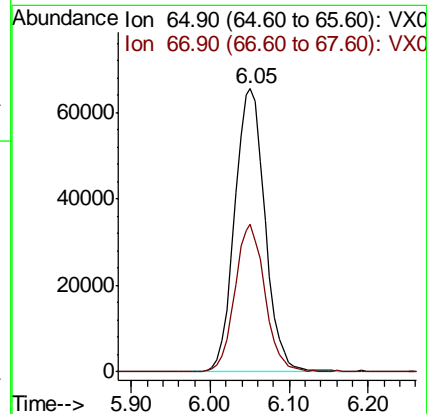
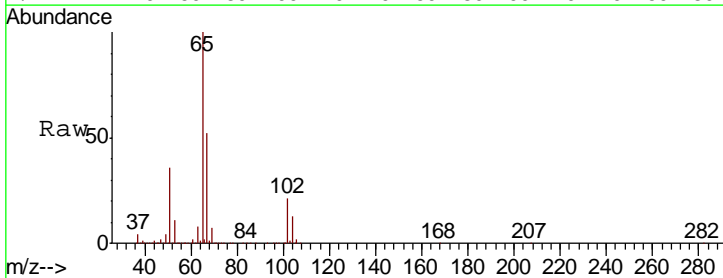
Instrument :
 MSVOA_X
ClientSampled :
 T9-12-13-K1-(0)

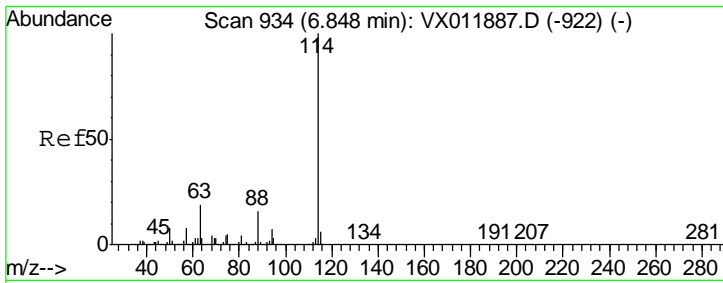
Tgt Ion	Resp	Lower	Upper
42	4533		
72	49.9	36.2	54.4
71	47.1	33.1	49.7



#33
 1,2-Dichloroethane-d4
 Concen: 43.527 ug/l
 RT: 6.05 min Scan# 847
 Delta R.T. 0.00 min
 Lab File: VX011936.D
 Acq: 31 Aug 2019 05:36

Tgt Ion	Resp	Lower	Upper
65	175177		
67	51.1	0.0	102.2

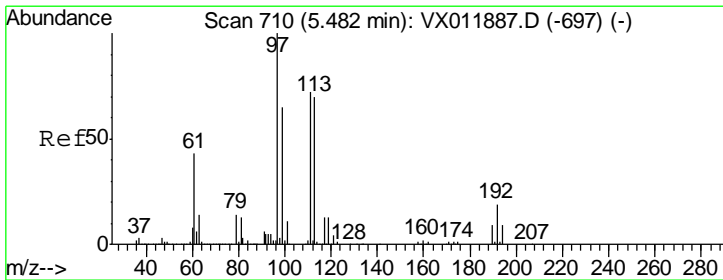
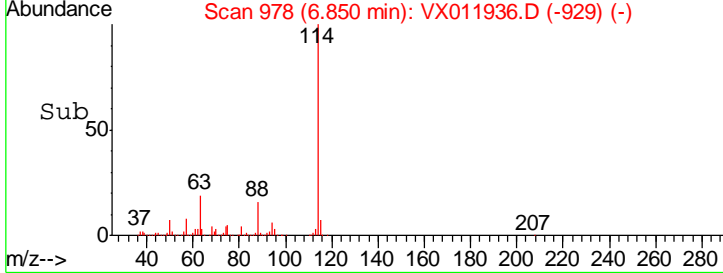
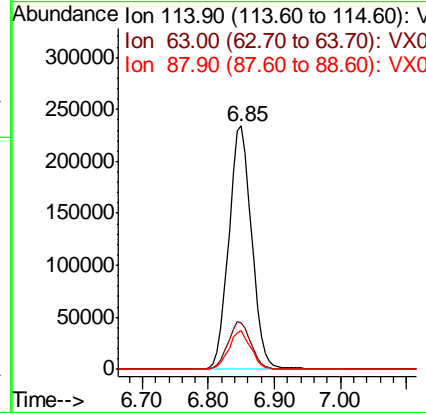
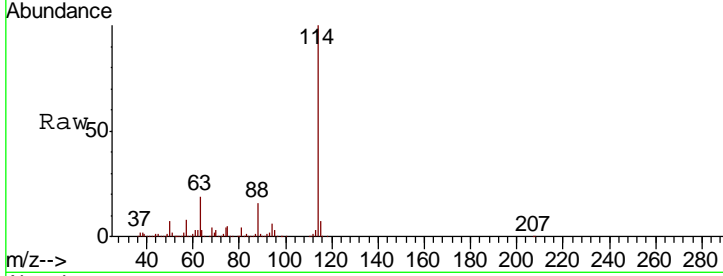




#34
 1,4-Difluorobenzene
 Concen: 50.000 ug/l
 RT: 6.85 min Scan# 978
 Delta R.T. 0.00 min
 Lab File: VX011936.D
 Acq: 31 Aug 2019 05:36

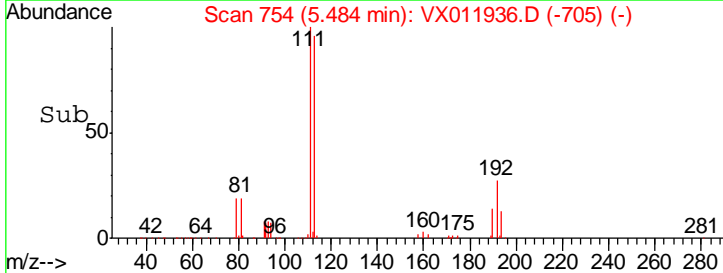
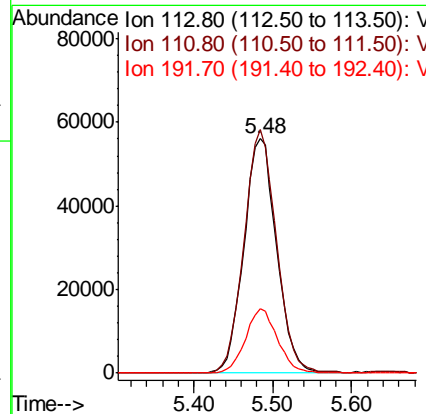
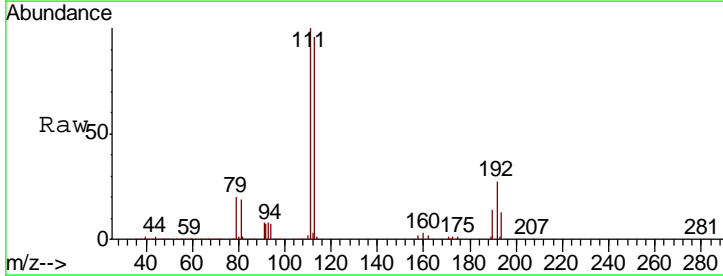
Instrument : MSVOA_X
 ClientSampleId : T9-12-13-K1-(0)

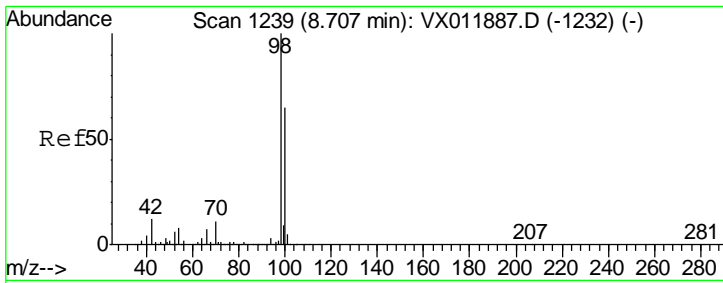
Tgt Ion	Resp	Lower	Upper
114	100		
63	19.2	0.0	38.8
88	15.8	0.0	31.2



#35
 Dibromofluoromethane
 Concen: 44.959 ug/l
 RT: 5.48 min Scan# 754
 Delta R.T. 0.00 min
 Lab File: VX011936.D
 Acq: 31 Aug 2019 05:36

Tgt Ion	Resp	Lower	Upper
113	100		
111	102.7	82.1	123.1
192	27.0	21.5	32.3

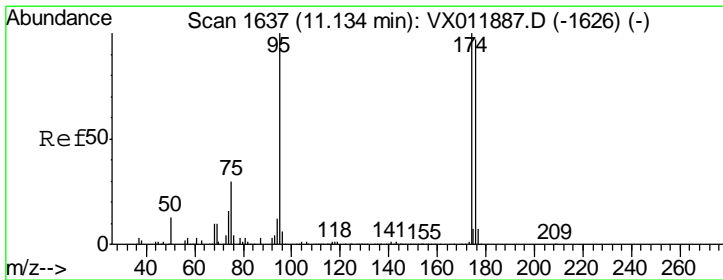
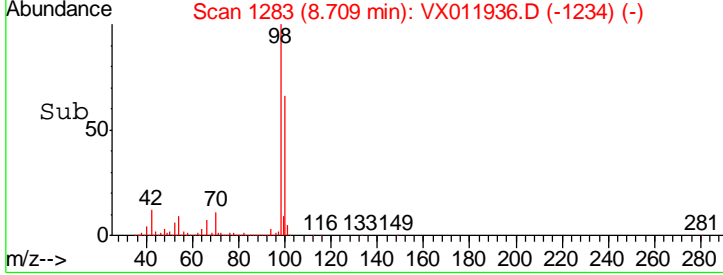
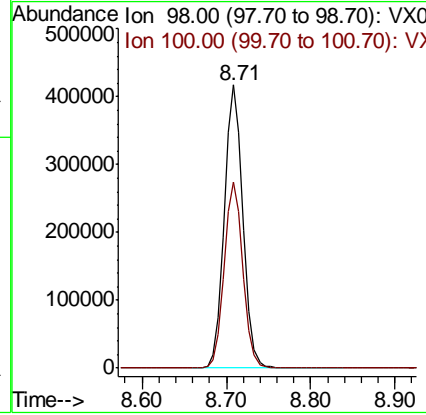
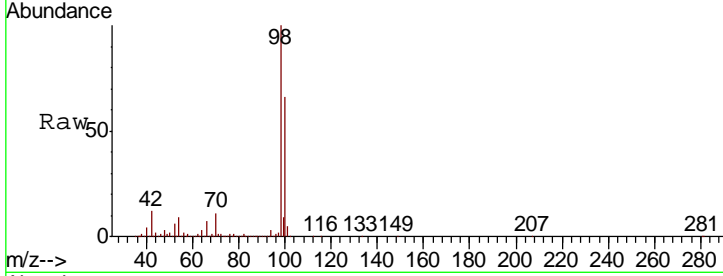




#50
 Toluene-d8
 Concen: 49.445 ug/l
 RT: 8.71 min Scan# 1283
 Delta R.T. 0.00 min
 Lab File: VX011936.D
 Acq: 31 Aug 2019 05:36

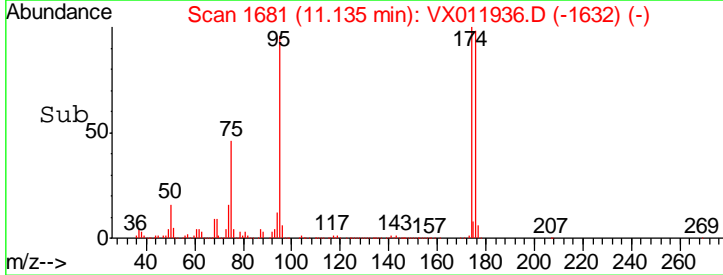
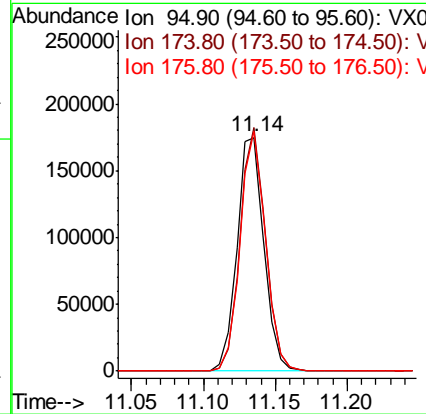
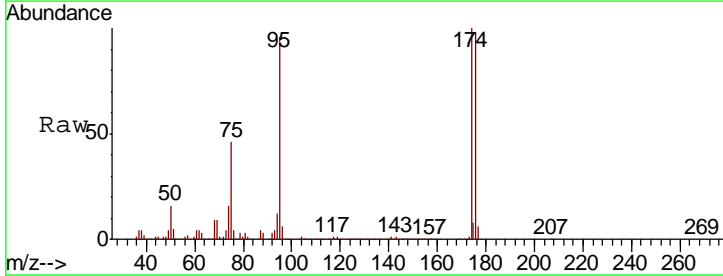
Instrument :
 MSVOA_X
ClientSampled :
 T9-12-13-K1-(0)

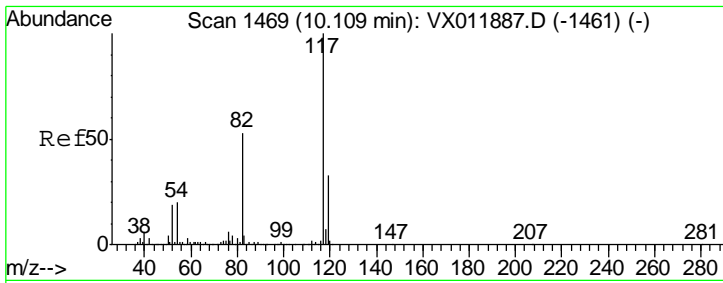
Tgt Ion	Resp	Lower	Upper
98	637047		
100	66.2	53.0	79.6



#62
 4-Bromofluorobenzene
 Concen: 40.569 ug/l
 RT: 11.14 min Scan# 1681
 Delta R.T. 0.00 min
 Lab File: VX011936.D
 Acq: 31 Aug 2019 05:36

Tgt Ion	Resp	Lower	Upper
95	229285		
174	98.1	0.0	196.0
176	96.5	0.0	191.4

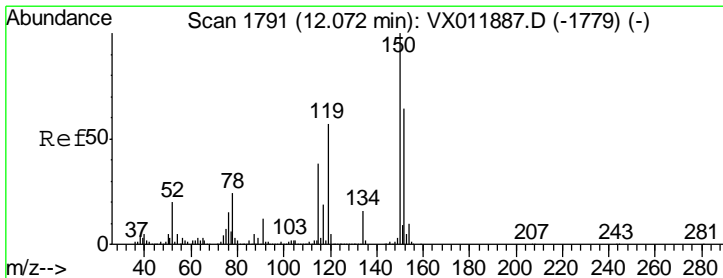
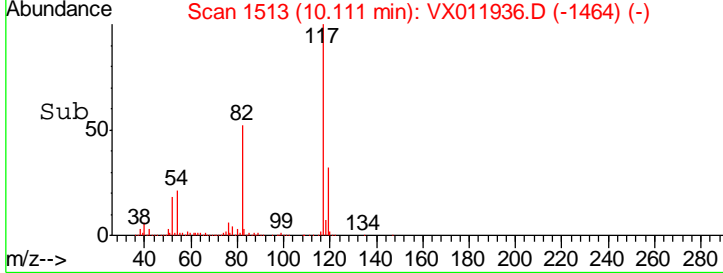
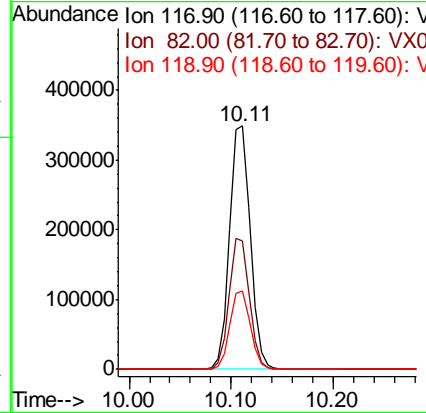
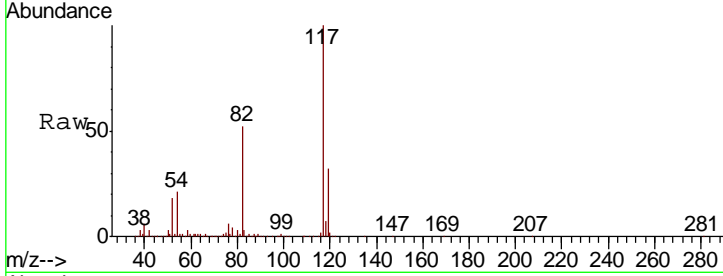




#63
 Chlorobenzene-d5
 Concen: 50.000 ug/l
 RT: 10.11 min Scan# 1513
 Delta R.T. 0.00 min
 Lab File: VX011936.D
 Acq: 31 Aug 2019 05:36

Instrument : MSVOA_X
 ClientSampled : T9-12-13-K1-(0)

Tgt Ion	Resp	Lower	Upper
117	490709		
82	52.5	42.0	63.0
119	32.0	26.2	39.4



#72
 1,4-Dichlorobenzene-d4
 Concen: 50.000 ug/l
 RT: 12.07 min Scan# 1835
 Delta R.T. 0.00 min
 Lab File: VX011936.D
 Acq: 31 Aug 2019 05:36

Tgt Ion	Resp	Lower	Upper
152	243156		
115	52.7	37.1	111.3
150	155.4	0.0	339.6

