

Data Path : Z:\voasrv\HPCHEM1\MSVOA_X\Data\VX083022\
 Data File : VX030949.D
 Acq On : 30 Aug 2022 19:20
 Operator : JC/MD
 Sample : N4281-05DL 5X
 Misc : 5.0mL/MSVOA_X/WATER
 ALS Vial : 23 Sample Multiplier: 1

Instrument :
 MSVOA_X
 ClientSampleId :
 RE115D1-20220818DL

Quant Time: Sep 06 01:16:57 2022
 Quant Method : Z:\voasrv\HPCHEM1\MSVOA_X\Method\82X083022W.M
 Quant Title : SW846 8260
 QLast Update : Tue Aug 30 14:24:53 2022
 Response via : Initial Calibration

Compound	R.T.	QIon	Response	Conc	Units	Dev(Min)

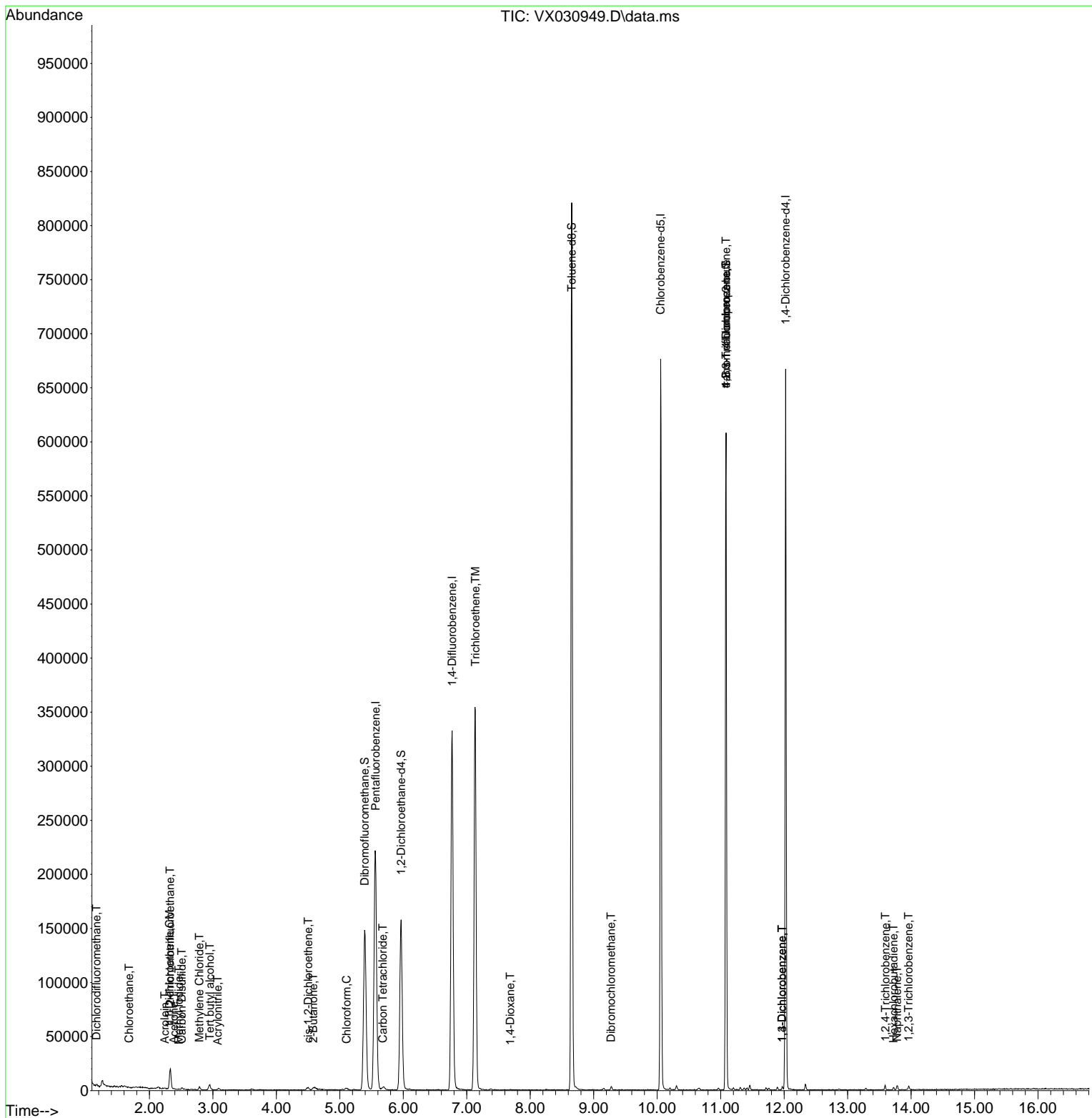
Internal Standards						
1) Pentafluorobenzene	5.562	168	215260	50.000	ug/l	0.00
34) 1,4-Difluorobenzene	6.769	114	356215	50.000	ug/l	0.00
63) Chlorobenzene-d5	10.055	117	321216	50.000	ug/l	0.00
72) 1,4-Dichlorobenzene-d4	12.024	152	137802	50.000	ug/l	0.00
System Monitoring Compounds						
33) 1,2-Dichloroethane-d4	5.964	65	148614	48.135	ug/l	0.00
Spiked Amount	50.000	Range	74 - 125	Recovery	=	96.260%
35) Dibromofluoromethane	5.391	113	131879	50.224	ug/l	0.00
Spiked Amount	50.000	Range	75 - 124	Recovery	=	100.440%
50) Toluene-d8	8.653	98	506847	52.121	ug/l	0.00
Spiked Amount	50.000	Range	86 - 113	Recovery	=	104.240%
62) 4-Bromofluorobenzene	11.085	95	168740	48.728	ug/l	0.00
Spiked Amount	50.000	Range	83 - 123	Recovery	=	97.460%
Target Compounds						
						Qvalue
2) Dichlorodifluoromethane	1.166	85	854	0.375	ug/l	93
5) Bromomethane	1.611	94	809	Below Cal	#	64
6) Chloroethane	1.679	64	385	0.236	ug/l #	41
9) 1,1,2-Trichlorotrifluo...	2.325	101	6859	2.586	ug/l	98
10) Methyl Iodide	2.465	142	675	4.627	ug/l #	73
11) Tert butyl alcohol	2.953	59	2738	3.743	ug/l #	74
12) 1,1-Dichloroethene	2.319	96	1222	0.467	ug/l	95
13) Acrolein	2.239	56	45	7.392	ug/l #	1
15) Acrylonitrile	3.075	53	402	0.249	ug/l #	60
16) Acetone	2.386	43	1320	0.947	ug/l	93
17) Carbon Disulfide	2.508	76	2223	0.322	ug/l	97
20) Methylene Chloride	2.788	84	1358	0.429	ug/l	97
25) 2-Butanone	4.580	43	461	0.204	ug/l #	48
27) cis-1,2-Dichloroethene	4.501	96	1582	0.484	ug/l #	20
30) Chloroform	5.105	83	1815	0.342	ug/l #	79
38) Carbon Tetrachloride	5.678	117	1784	0.480	ug/l #	78
44) Trichloroethene	7.135	130	145189	43.814	ug/l	99
49) 1,4-Dioxane	7.684	88	277	3.307	ug/l #	62
60) Dibromochloromethane	9.275	129	624	0.211	ug/l #	11
76) 1,2,3-Trichloropropane	11.085	75	80995	23.875	ug/l #	38
81) trans-1,4-Dichloro-2-b...	11.085	75	80995	70.982	ug/l #	13
87) 1,3-Dichlorobenzene	11.969	146	1077	0.207	ug/l	90
88) 1,4-Dichlorobenzene	11.969	146	1077	0.202	ug/l	91
93) 1,2,4-Trichlorobenzene	13.597	180	1070	0.317	ug/l	98
94) Hexachlorobutadiene	13.725	225	491	0.342	ug/l	84
95) Naphthalene	13.780	128	3289	0.272	ug/l	98
96) 1,2,3-Trichlorobenzene	13.963	180	989	0.290	ug/l	91

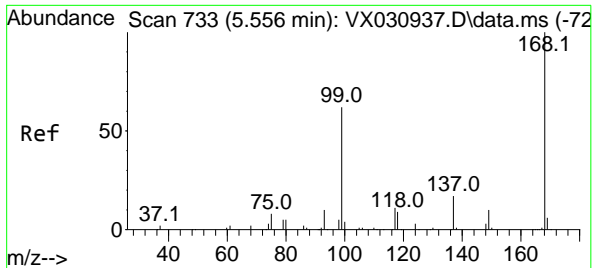
(#) = qualifier out of range (m) = manual integration (+) = signals summed

Data Path : Z:\voasrv\HPCHEM1\MSVOA_X\Data\VX083022\
 Data File : VX030949.D
 Acq On : 30 Aug 2022 19:20
 Operator : JC/MD
 Sample : N4281-05DL 5X
 Misc : 5.0mL/MSVOA_X/WATER
 ALS Vial : 23 Sample Multiplier: 1

Instrument :
 MSVOA_X
 ClientSampleId :
 RE115D1-20220818DL

Quant Time: Sep 06 01:16:57 2022
 Quant Method : Z:\voasrv\HPCHEM1\MSVOA_X\Method\82X083022W.M
 Quant Title : SW846 8260
 QLast Update : Tue Aug 30 14:24:53 2022
 Response via : Initial Calibration

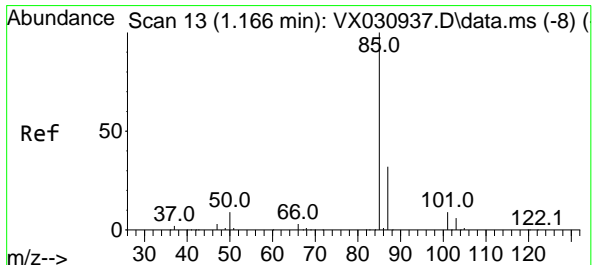
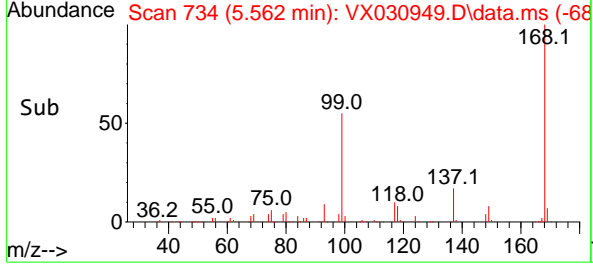
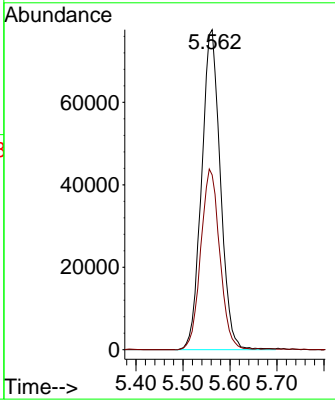
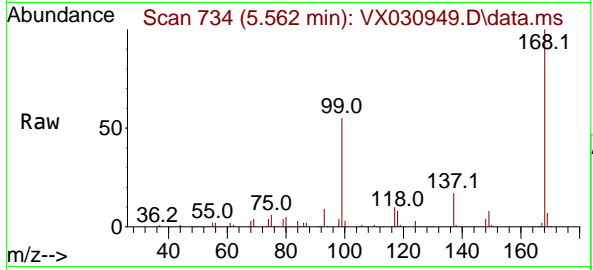




#1
 Pentafluorobenzene
 Concen: 50.000 ug/l
 RT: 5.562 min Scan# 71
 Delta R.T. 0.006 min
 Lab File: VX030949.D
 Acq: 30 Aug 2022 19:20

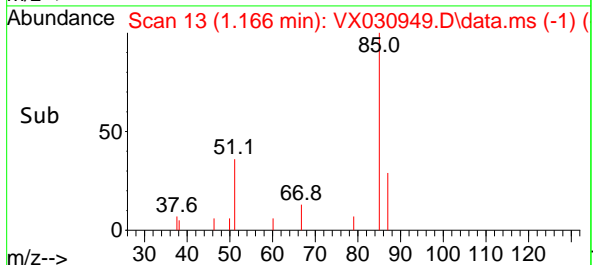
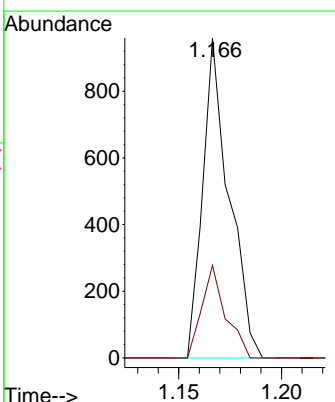
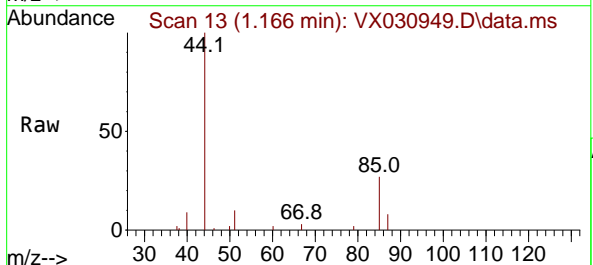
Instrument : MSVOA_X
 ClientSampleId : RE115D1-20220818DL

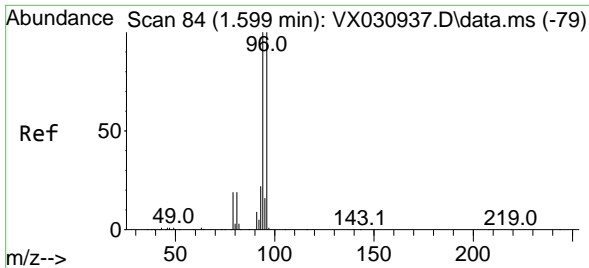
Tgt Ion:168 Resp: 215260
 Ion Ratio Lower Upper
 168 100
 99 54.6 44.0 66.0



#2
 Dichlorodifluoromethane
 Concen: 0.375 ug/l
 RT: 1.166 min Scan# 13
 Delta R.T. 0.000 min
 Lab File: VX030949.D
 Acq: 30 Aug 2022 19:20

Tgt Ion: 85 Resp: 854
 Ion Ratio Lower Upper
 85 100
 87 29.0 16.5 49.5

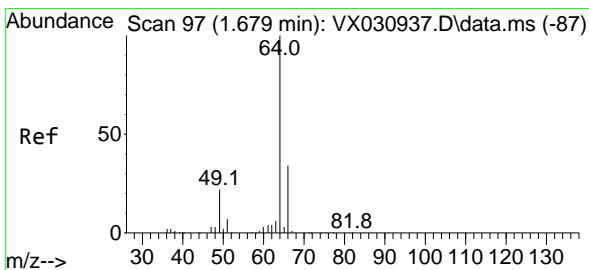
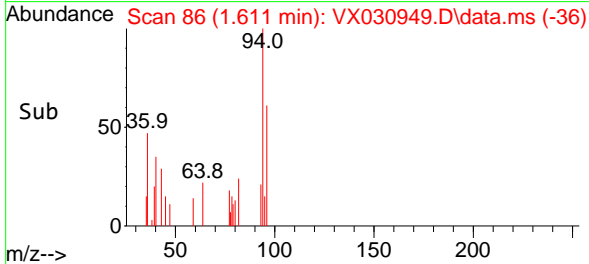
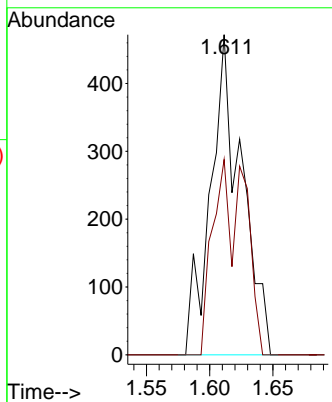
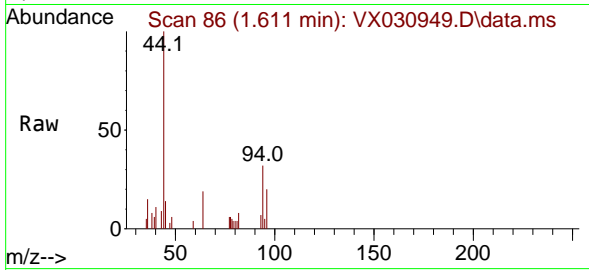




#5
 Bromomethane
 Concen: Below Cal
 RT: 1.611 min Scan# 80
 Delta R.T. 0.006 min
 Lab File: VX030949.D
 Acq: 30 Aug 2022 19:20

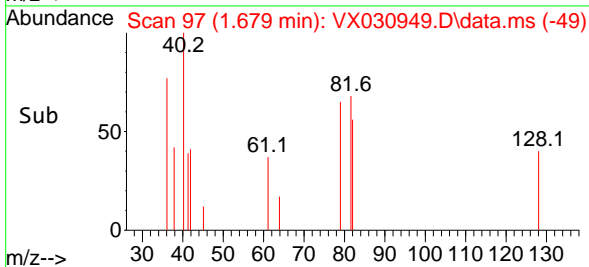
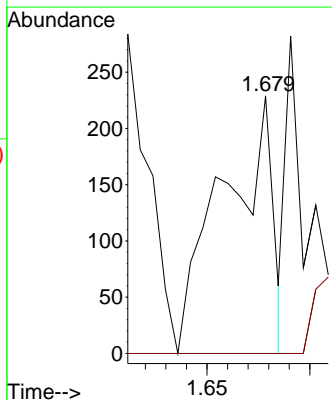
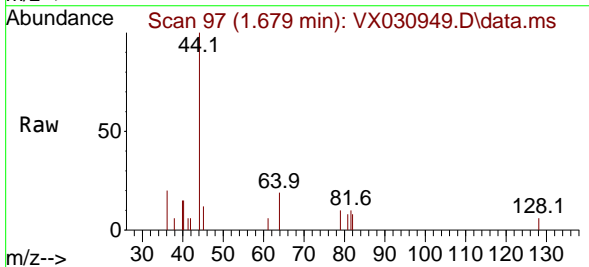
Instrument : MSVOA_X
 ClientSampleId : RE115D1-20220818DL

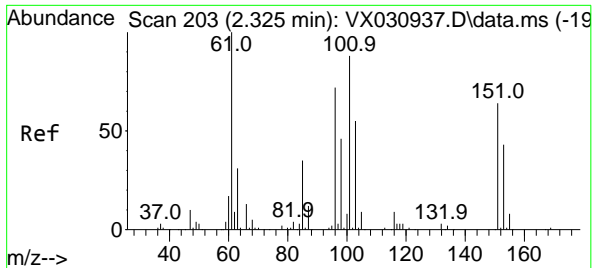
Tgt Ion: 94 Resp: 809
 Ion Ratio Lower Upper
 94 100
 96 61.0 76.9 115.3#



#6
 Chloroethane
 Concen: 0.236 ug/l
 RT: 1.679 min Scan# 97
 Delta R.T. -0.006 min
 Lab File: VX030949.D
 Acq: 30 Aug 2022 19:20

Tgt Ion: 64 Resp: 385
 Ion Ratio Lower Upper
 64 100
 66 0.0 27.2 40.8#



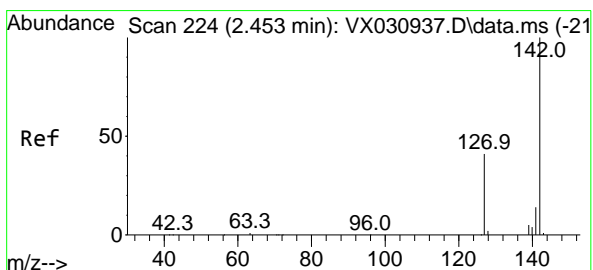
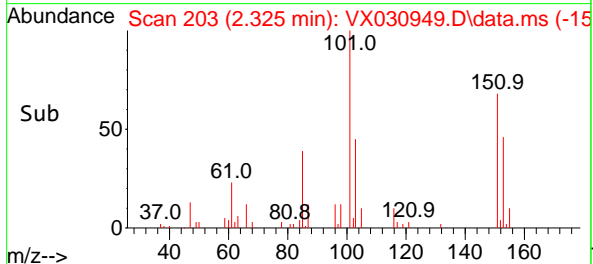
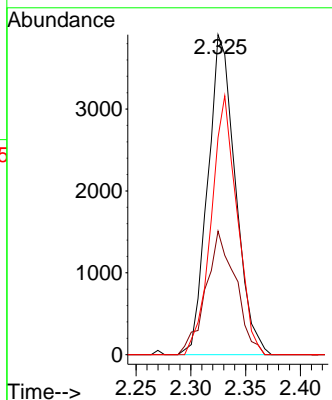
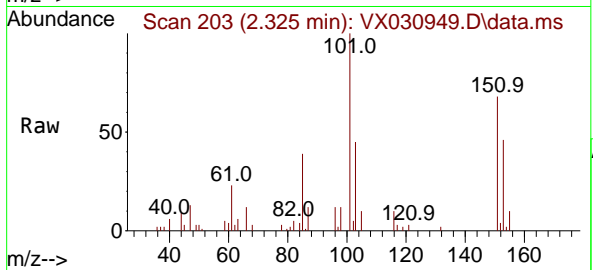


#9
 1,1,2-Trichlorotrifluoroethane
 Concen: 2.586 ug/l
 RT: 2.325 min Scan# 20
 Delta R.T. -0.000 min
 Lab File: VX030949.D
 Acq: 30 Aug 2022 19:20

Instrument : MSVOA_X
 ClientSampleId : RE115D1-20220818DL

Tgt Ion:101 Resp: 6859

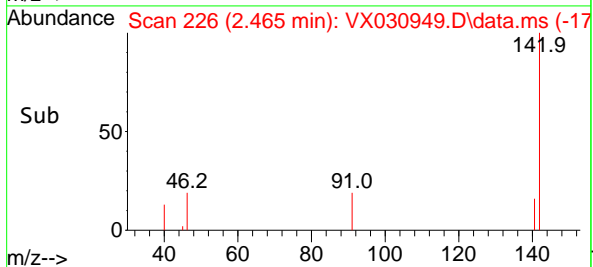
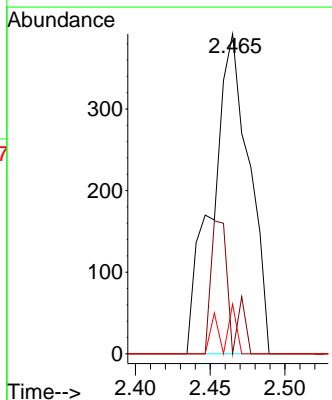
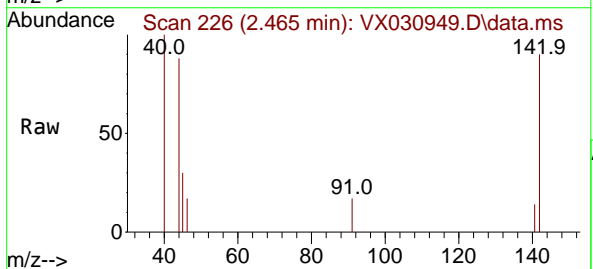
Ion	Ratio	Lower	Upper
101	100		
85	41.6	34.0	51.0
151	75.9	59.4	89.0

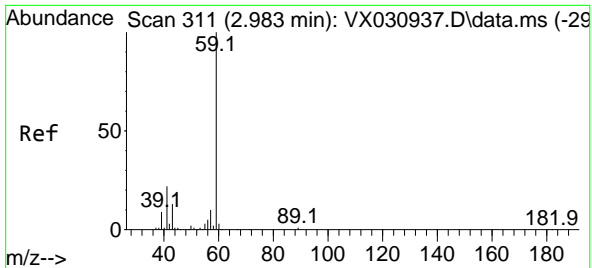


#10
 Methyl Iodide
 Concen: 4.627 ug/l
 RT: 2.465 min Scan# 226
 Delta R.T. 0.012 min
 Lab File: VX030949.D
 Acq: 30 Aug 2022 19:20

Tgt Ion:142 Resp: 675

Ion	Ratio	Lower	Upper
142	100		
127	21.3	30.2	45.2#
141	2.7	11.3	16.9#

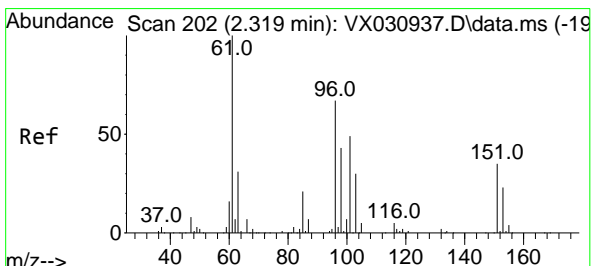
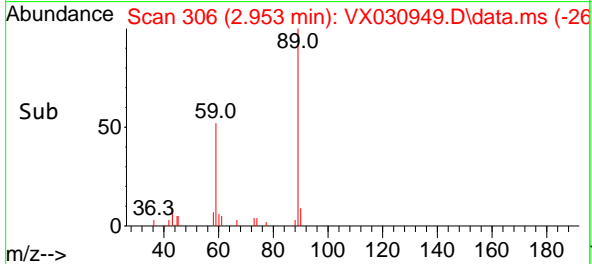
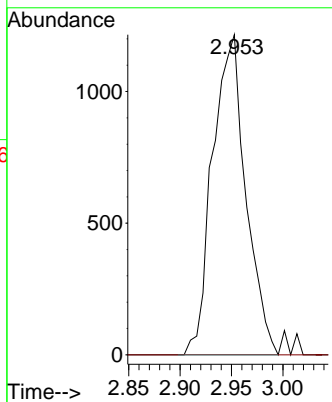
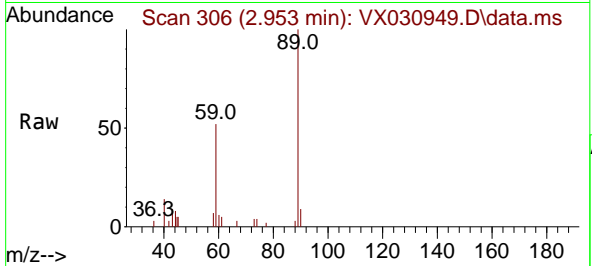




#11
 Tert butyl alcohol
 Concen: 3.743 ug/l
 RT: 2.953 min Scan# 306
 Delta R.T. -0.036 min
 Lab File: VX030949.D
 Acq: 30 Aug 2022 19:20

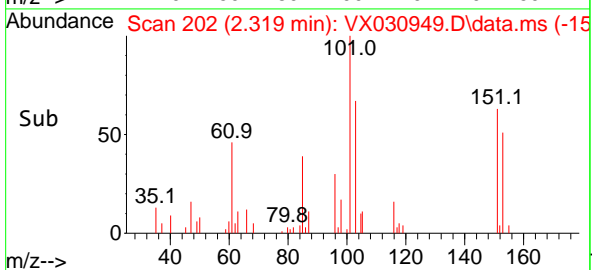
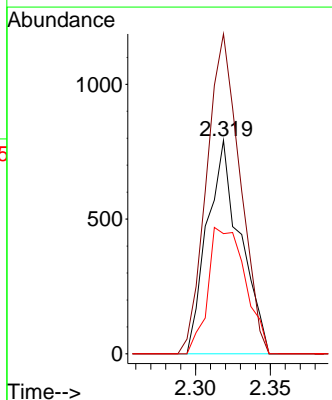
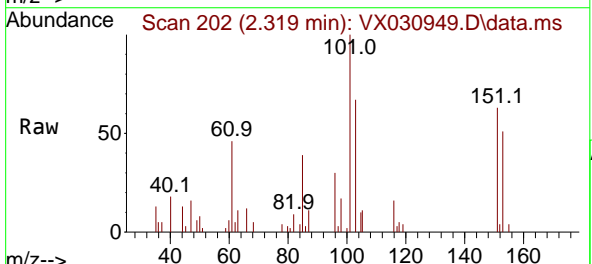
Instrument : MSVOA_X
 ClientSampleId : RE115D1-20220818DL

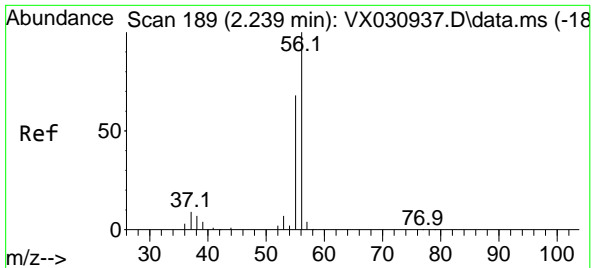
Tgt Ion: 59 Resp: 2738
 Ion Ratio Lower Upper
 59 100
 57 0.0 7.4 11.2#



#12
 1,1-Dichloroethene
 Concen: 0.467 ug/l
 RT: 2.319 min Scan# 202
 Delta R.T. -0.000 min
 Lab File: VX030949.D
 Acq: 30 Aug 2022 19:20

Tgt Ion: 96 Resp: 1222
 Ion Ratio Lower Upper
 96 100
 61 149.9 117.4 176.0
 98 56.3 52.2 78.4

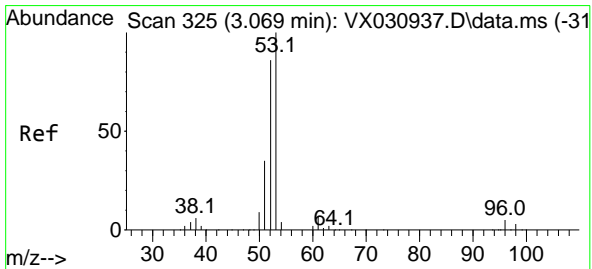
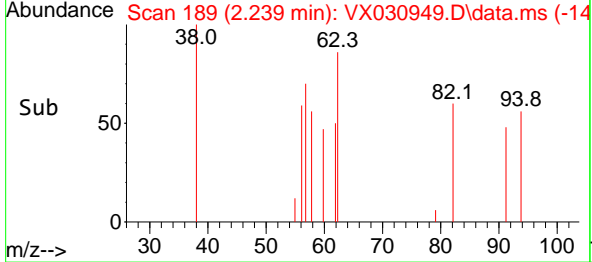
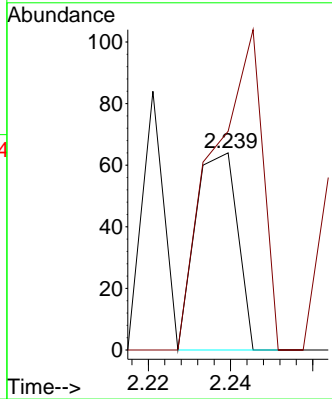
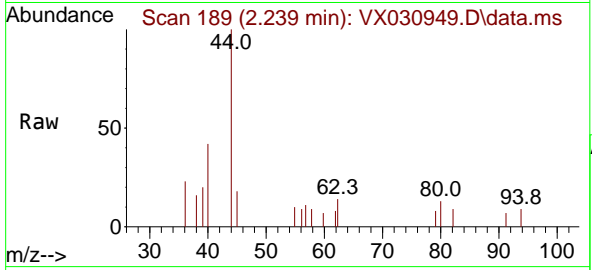




#13
 Acrolein
 Concen: 7.392 ug/l
 RT: 2.239 min Scan# 11
 Delta R.T. 0.000 min
 Lab File: VX030949.D
 Acq: 30 Aug 2022 19:20

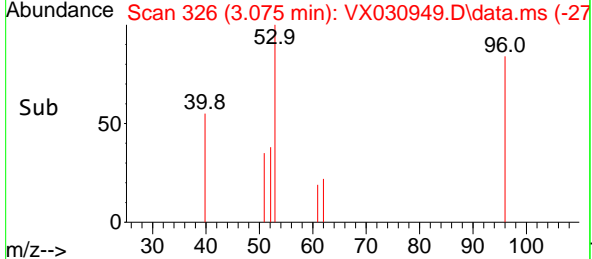
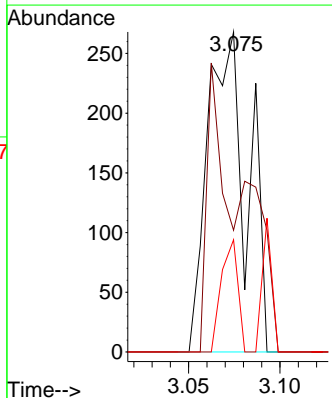
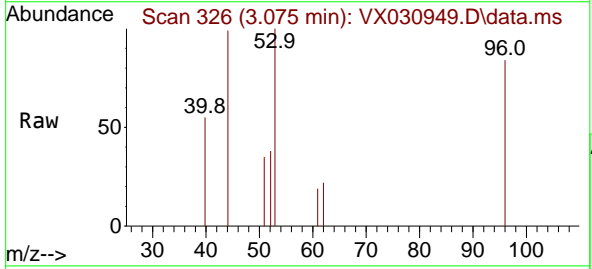
Instrument : MSVOA_X
 ClientSampleId : RE115D1-20220818DL

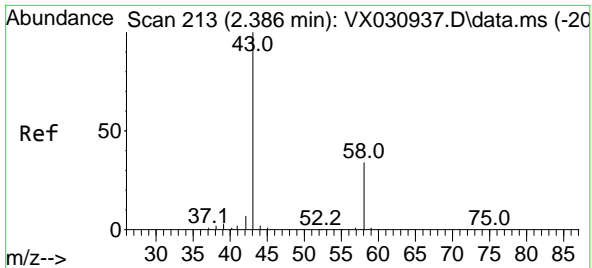
Tgt Ion	Resp	Lower	Upper
56	100		
55	191.1	56.6	84.8#



#15
 Acrylonitrile
 Concen: 0.249 ug/l
 RT: 3.075 min Scan# 326
 Delta R.T. 0.006 min
 Lab File: VX030949.D
 Acq: 30 Aug 2022 19:20

Tgt Ion	Resp	Lower	Upper
53	100		
52	43.3	65.4	98.0#
51	14.9	27.7	41.5#



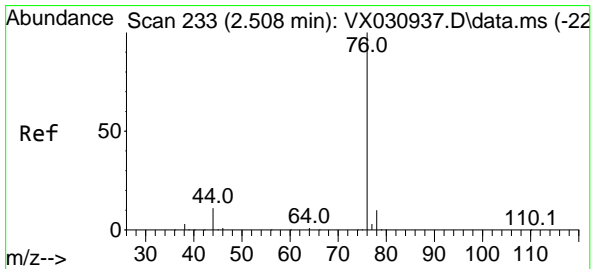
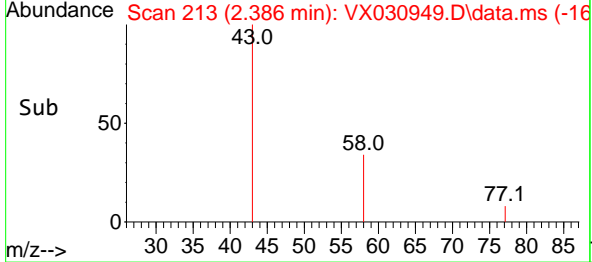
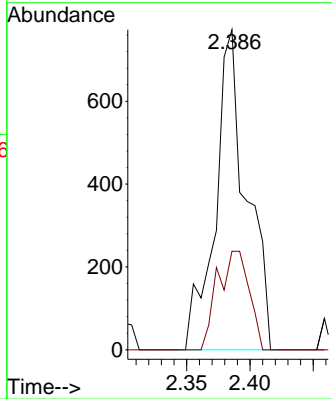
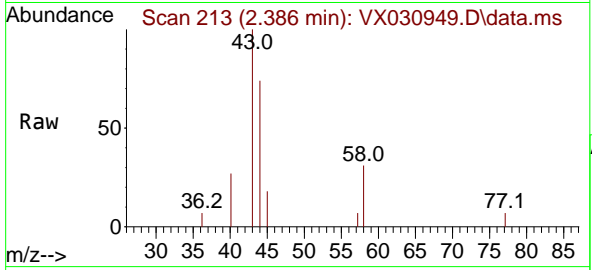


#16
 Acetone
 Concen: 0.947 ug/l
 RT: 2.386 min Scan# 213
 Delta R.T. -0.000 min
 Lab File: VX030949.D
 Acq: 30 Aug 2022 19:20

Instrument : MSVOA_X
 ClientSampleId : RE115D1-20220818DL

Tgt Ion: 43 Resp: 1320

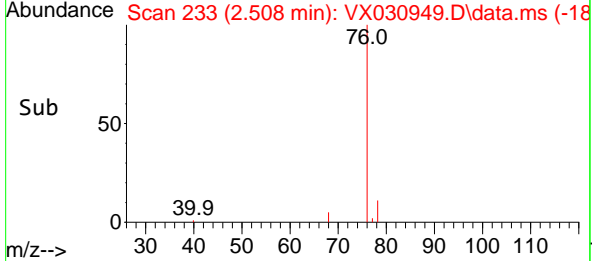
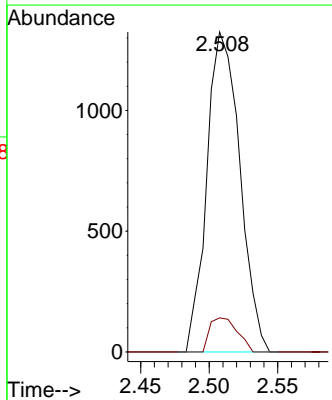
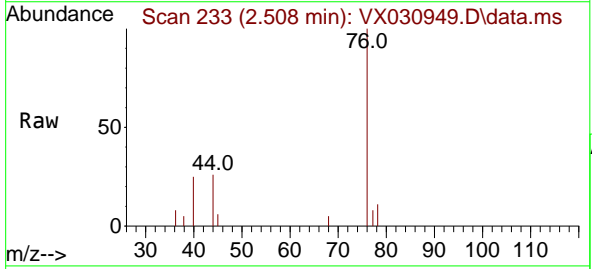
Ion	Ratio	Lower	Upper
43	100		
58	30.8	27.7	41.5

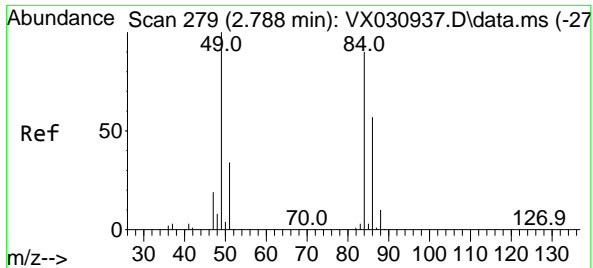


#17
 Carbon Disulfide
 Concen: 0.322 ug/l
 RT: 2.508 min Scan# 233
 Delta R.T. -0.006 min
 Lab File: VX030949.D
 Acq: 30 Aug 2022 19:20

Tgt Ion: 76 Resp: 2223

Ion	Ratio	Lower	Upper
76	100		
78	10.6	7.8	11.6



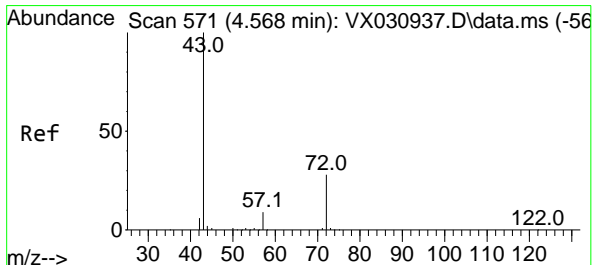
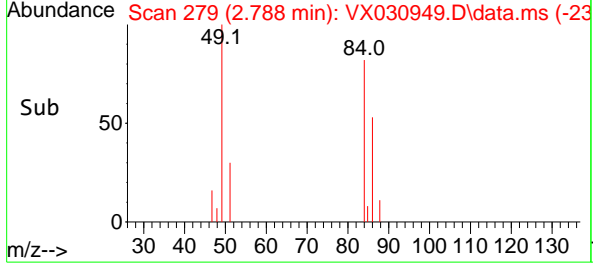
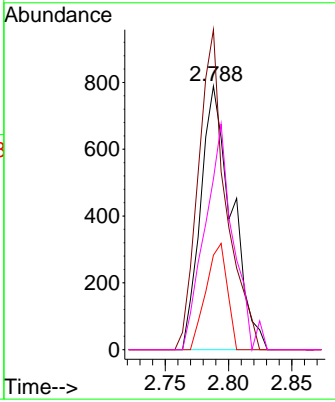
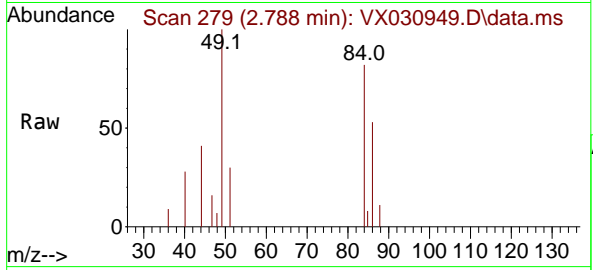


#20
 Methylene Chloride
 Concen: 0.429 ug/l
 RT: 2.788 min Scan# 21
 Delta R.T. 0.000 min
 Lab File: VX030949.D
 Acq: 30 Aug 2022 19:20

Instrument : MSVOA_X
 ClientSampleId : RE115D1-20220818DL

Tgt Ion: 84 Resp: 1358

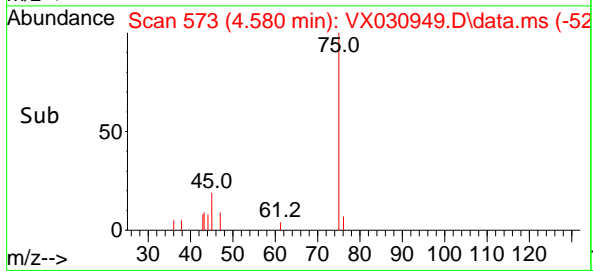
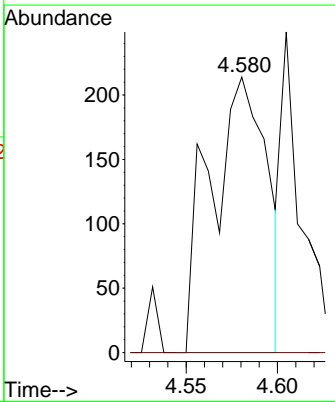
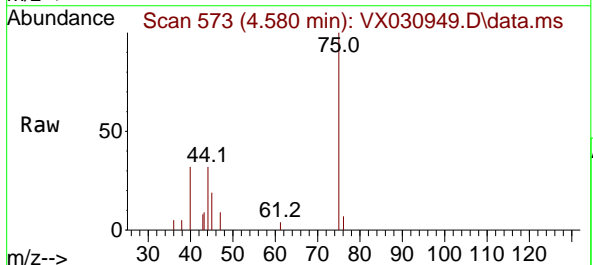
Ion	Ratio	Lower	Upper
84	100		
49	121.4	93.8	140.6
51	35.9	29.4	44.0
86	64.8	51.0	76.4

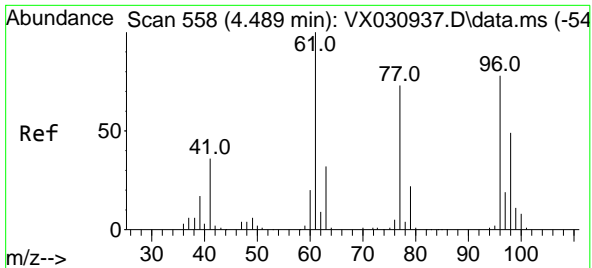


#25
 2-Butanone
 Concen: 0.204 ug/l
 RT: 4.580 min Scan# 573
 Delta R.T. 0.012 min
 Lab File: VX030949.D
 Acq: 30 Aug 2022 19:20

Tgt Ion: 43 Resp: 461

Ion	Ratio	Lower	Upper
43	100		
72	0.0	21.7	32.5#

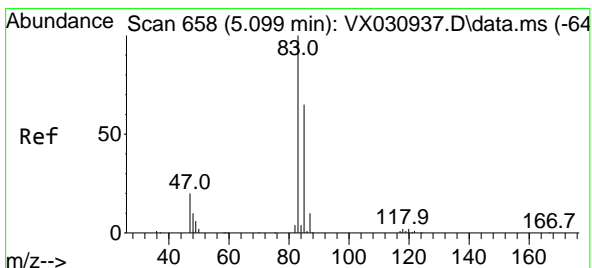
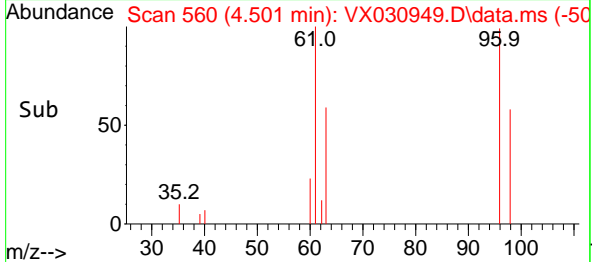
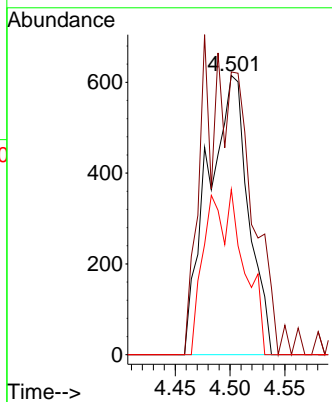
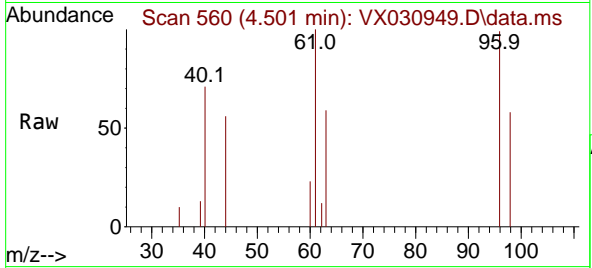




#27
 cis-1,2-Dichloroethene
 Concen: 0.484 ug/l
 RT: 4.501 min Scan# 501
 Delta R.T. 0.012 min
 Lab File: VX030949.D
 Acq: 30 Aug 2022 19:20

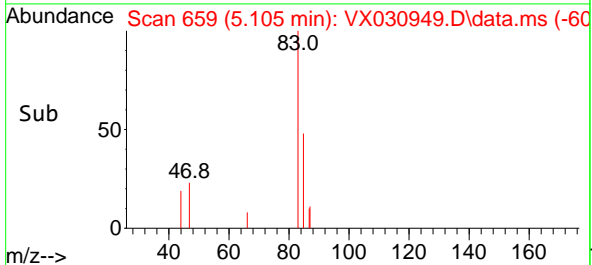
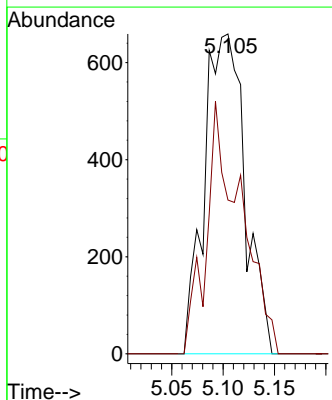
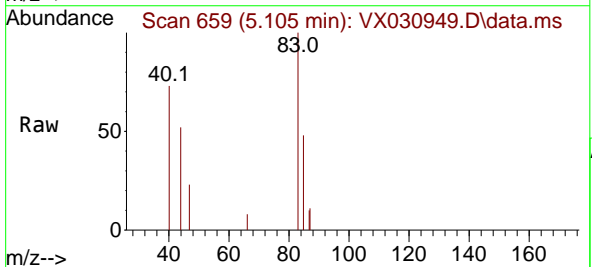
Instrument :
 MSVOA_X
 ClientSampleId :
 RE115D1-20220818DL

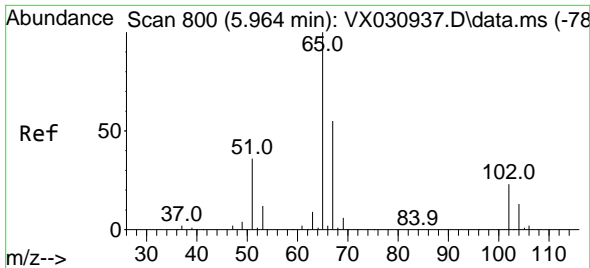
Tgt Ion: 96 Resp: 1582
 Ion Ratio Lower Upper
 96 100
 61 0.0 0.0 270.0
 98 56.1 0.0 127.8



#30
 Chloroform
 Concen: 0.342 ug/l
 RT: 5.105 min Scan# 659
 Delta R.T. 0.006 min
 Lab File: VX030949.D
 Acq: 30 Aug 2022 19:20

Tgt Ion: 83 Resp: 1815
 Ion Ratio Lower Upper
 83 100
 85 48.1 51.5 77.3#

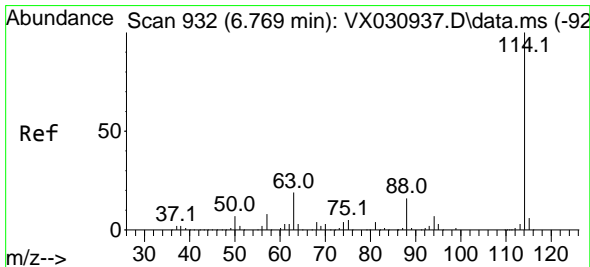
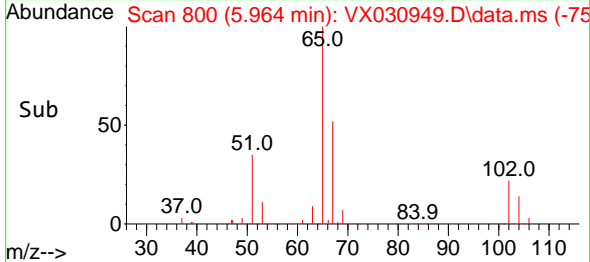
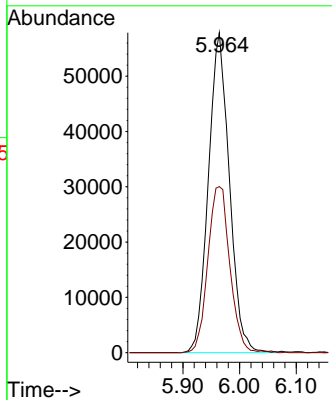
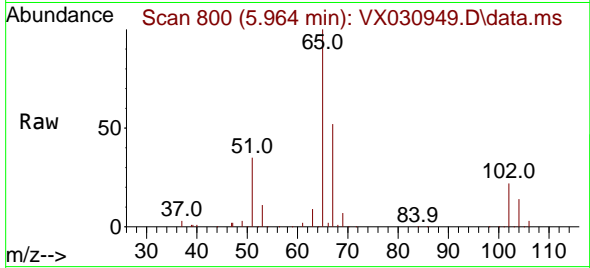




#33
 1,2-Dichloroethane-d4
 Concen: 48.135 ug/l
 RT: 5.964 min Scan# 800
 Delta R.T. 0.006 min
 Lab File: VX030949.D
 Acq: 30 Aug 2022 19:20

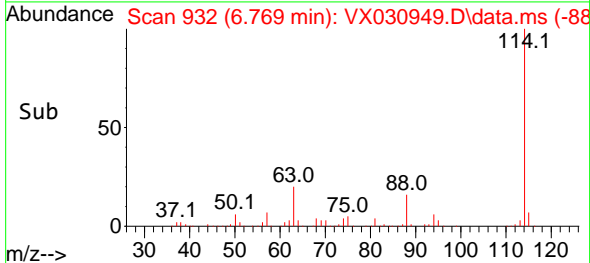
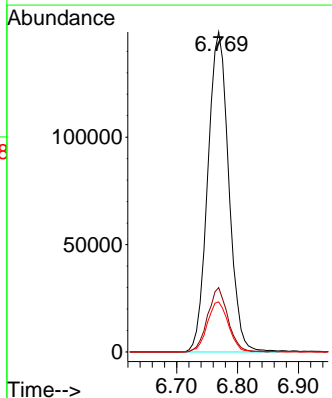
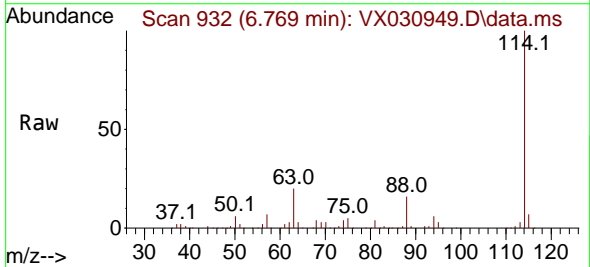
Instrument : MSVOA_X
 ClientSampleId : RE115D1-20220818DL

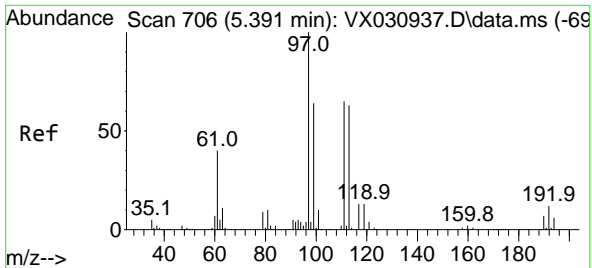
Tgt Ion: 65 Resp: 148614
 Ion Ratio Lower Upper
 65 100
 67 54.5 0.0 109.6



#34
 1,4-Difluorobenzene
 Concen: 50.000 ug/l
 RT: 6.769 min Scan# 932
 Delta R.T. 0.000 min
 Lab File: VX030949.D
 Acq: 30 Aug 2022 19:20

Tgt Ion: 114 Resp: 356215
 Ion Ratio Lower Upper
 114 100
 63 20.1 0.0 38.4
 88 15.7 0.0 31.8



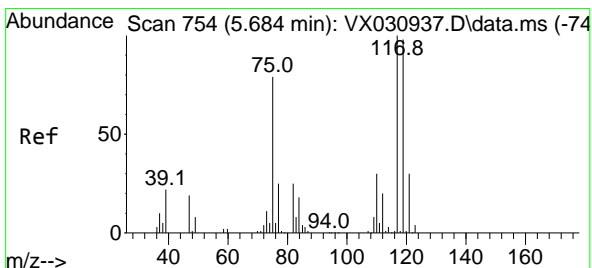
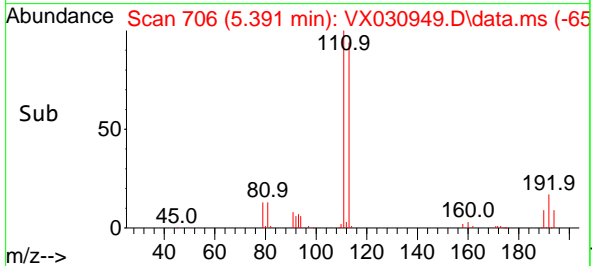
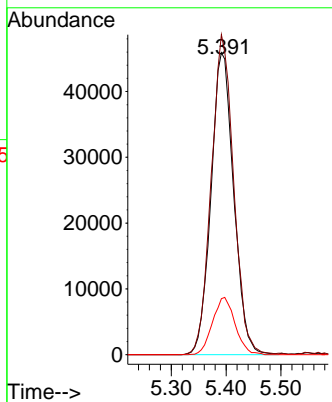
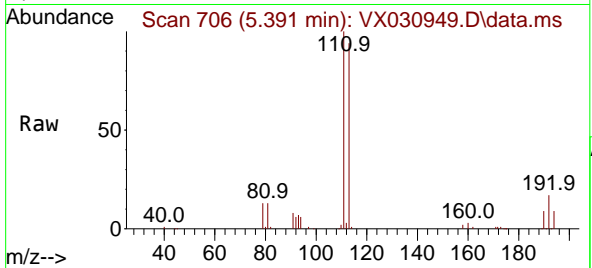


#35
 Dibromofluoromethane
 Concen: 50.224 ug/l
 RT: 5.391 min Scan# 706
 Delta R.T. 0.000 min
 Lab File: VX030949.D
 Acq: 30 Aug 2022 19:20

Instrument : MSVOA_X
 ClientSampleId : RE115D1-20220818DL

Tgt Ion:113 Resp: 131879

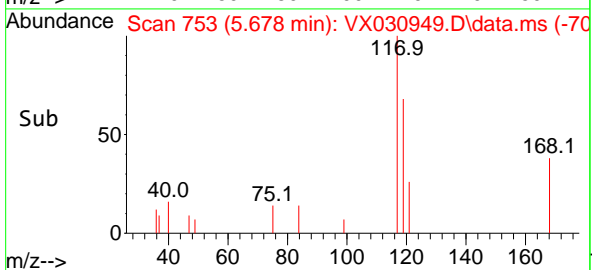
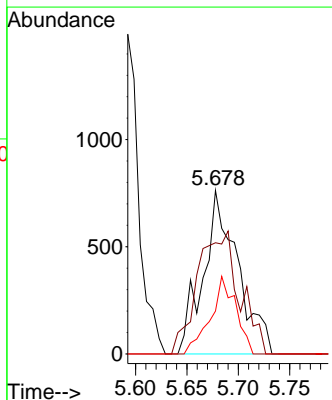
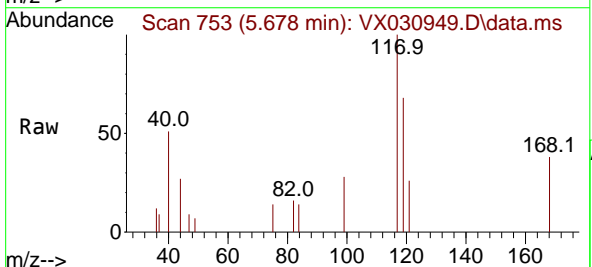
Ion	Ratio	Lower	Upper
113	100		
111	104.8	83.2	124.8
192	18.9	14.8	22.2

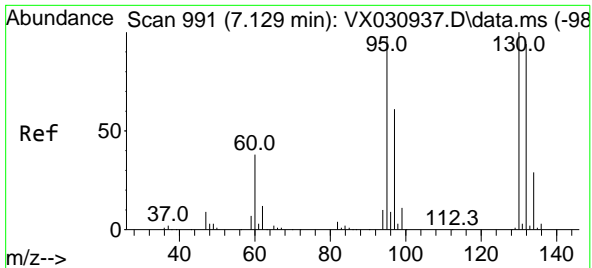


#38
 Carbon Tetrachloride
 Concen: 0.480 ug/l
 RT: 5.678 min Scan# 753
 Delta R.T. -0.006 min
 Lab File: VX030949.D
 Acq: 30 Aug 2022 19:20

Tgt Ion:117 Resp: 1784

Ion	Ratio	Lower	Upper
117	100		
119	68.0	74.1	111.1#
121	26.2	25.8	38.8

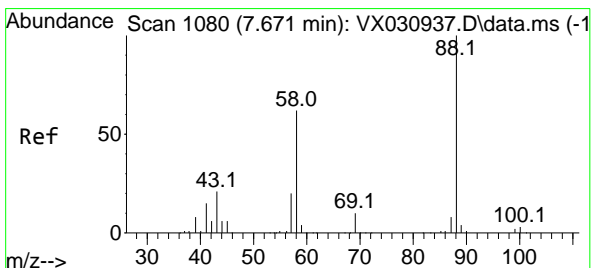
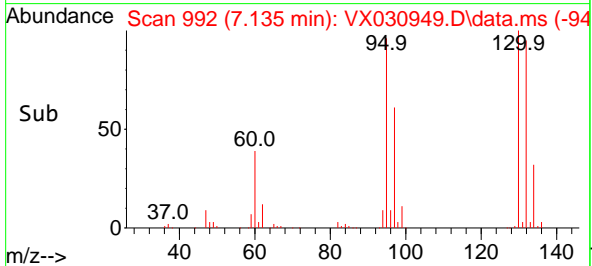
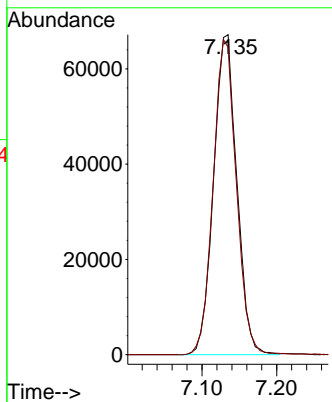
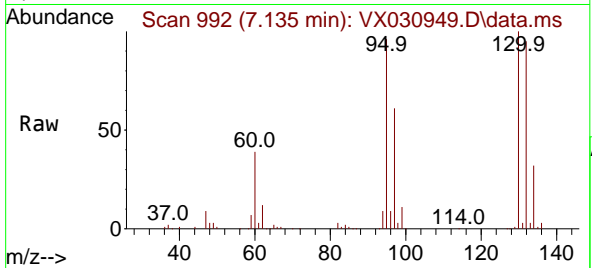




#44
 Trichloroethene
 Concen: 43.814 ug/l
 RT: 7.135 min Scan# 94
 Delta R.T. 0.006 min
 Lab File: VX030949.D
 Acq: 30 Aug 2022 19:20

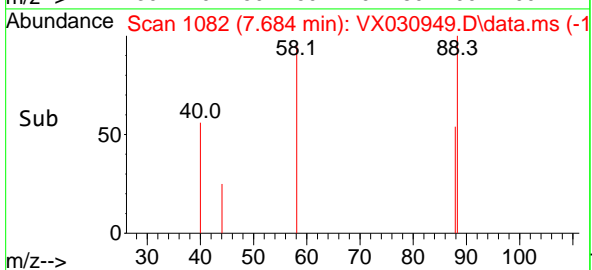
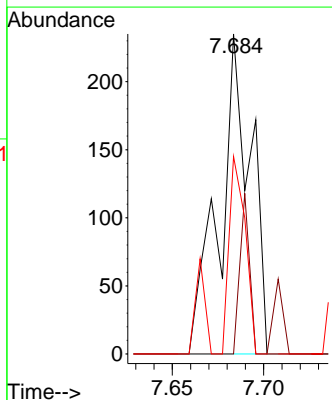
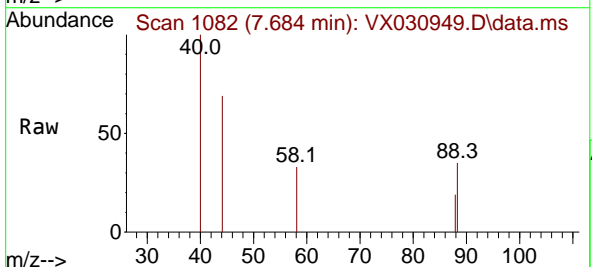
Instrument : MSVOA_X
 ClientSampleId : RE115D1-20220818DL

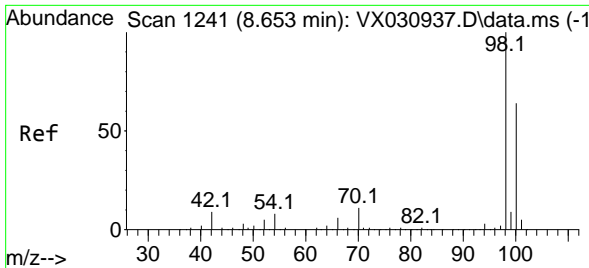
Tgt Ion:130 Resp: 145189
 Ion Ratio Lower Upper
 130 100
 95 96.0 0.0 194.8



#49
 1,4-Dioxane
 Concen: 3.307 ug/l
 RT: 7.684 min Scan# 1082
 Delta R.T. 0.007 min
 Lab File: VX030949.D
 Acq: 30 Aug 2022 19:20

Tgt Ion: 88 Resp: 277
 Ion Ratio Lower Upper
 88 100
 43 15.5 23.8 35.8#
 58 32.5 53.8 80.6#

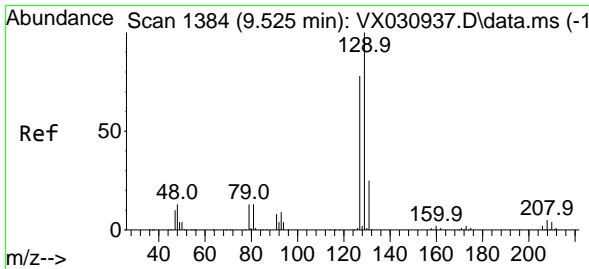
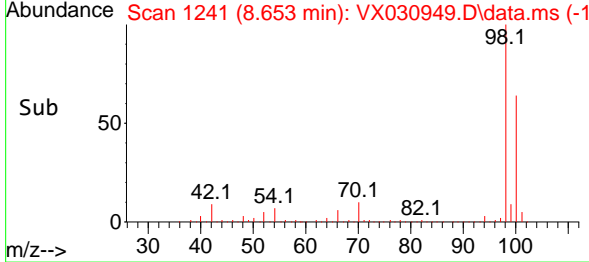
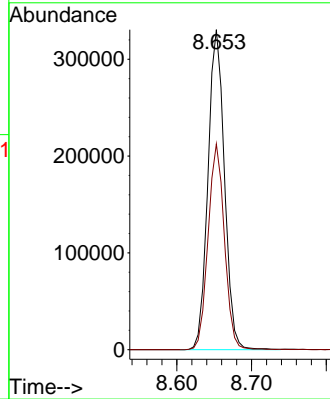
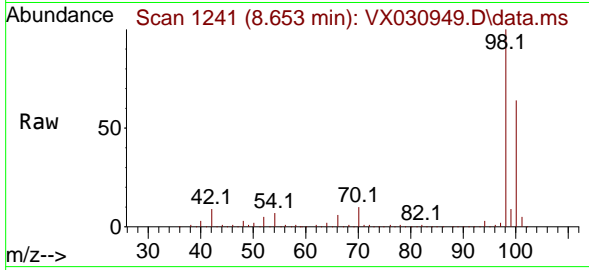




#50
 Toluene-d8
 Concen: 52.121 ug/l
 RT: 8.653 min Scan# 11
 Delta R.T. -0.000 min
 Lab File: VX030949.D
 Acq: 30 Aug 2022 19:20

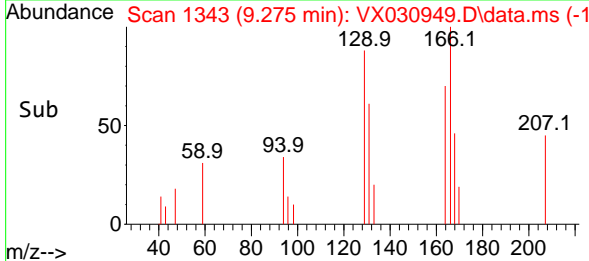
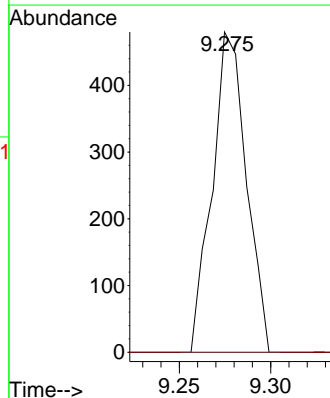
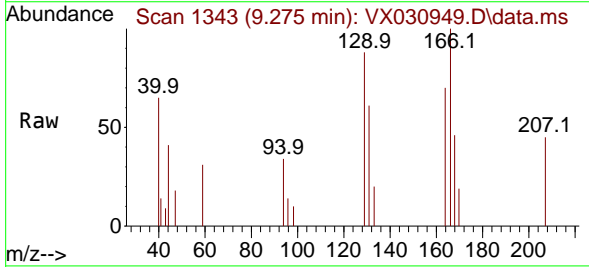
Instrument :
 MSVOA_X
 ClientSampleId :
 RE115D1-20220818DL

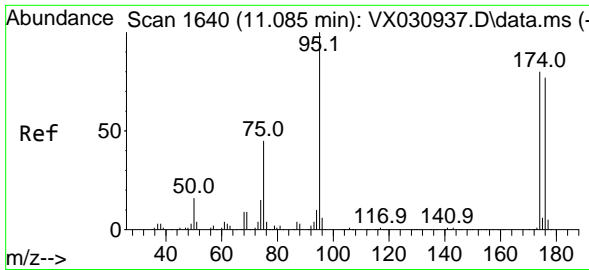
Tgt Ion: 98 Resp: 506847
 Ion Ratio Lower Upper
 98 100
 100 63.7 52.3 78.5



#60
 Dibromochloromethane
 Concen: 0.211 ug/l
 RT: 9.275 min Scan# 1343
 Delta R.T. -0.250 min
 Lab File: VX030949.D
 Acq: 30 Aug 2022 19:20

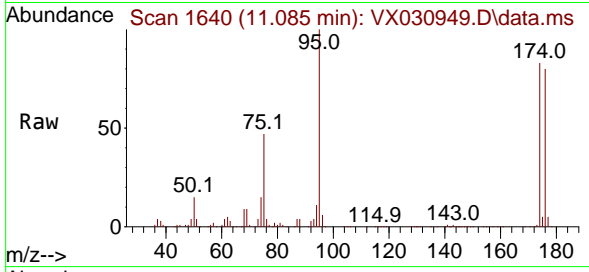
Tgt Ion: 129 Resp: 624
 Ion Ratio Lower Upper
 129 100
 127 0.0 38.5 115.5#



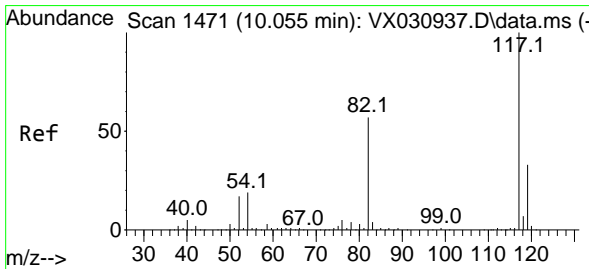
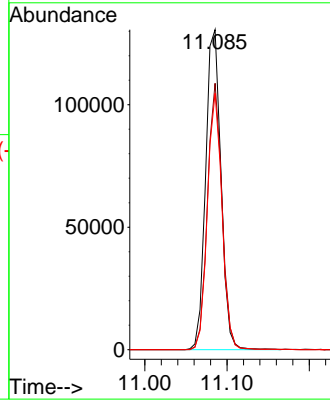
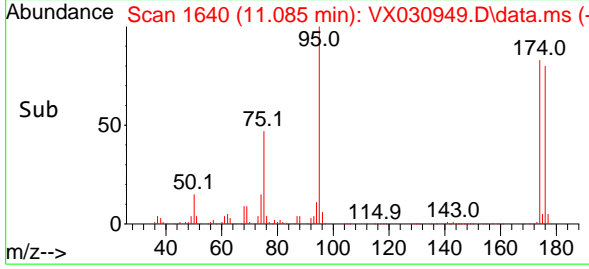


#62
 4-Bromofluorobenzene
 Concen: 48.728 ug/l
 RT: 11.085 min Scan# 1640
 Delta R.T. 0.000 min
 Lab File: VX030949.D
 Acq: 30 Aug 2022 19:20

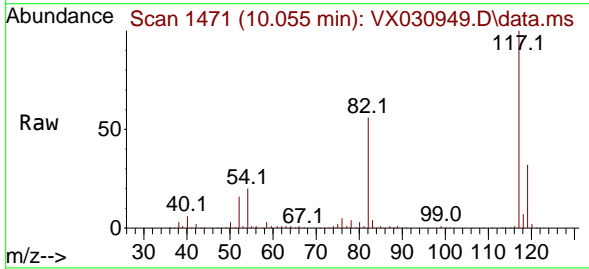
Instrument : MSVOA_X
 ClientSampleId : RE115D1-20220818DL



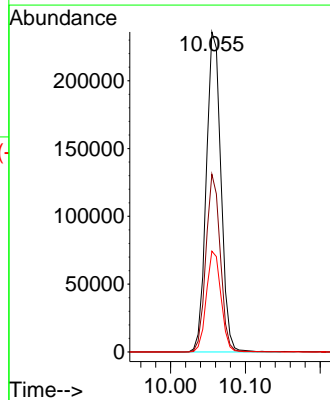
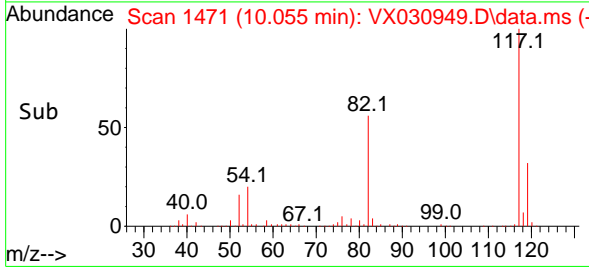
Tgt Ion: 95 Resp: 168740
 Ion Ratio Lower Upper
 95 100
 174 79.7 0.0 149.0
 176 76.4 0.0 146.0

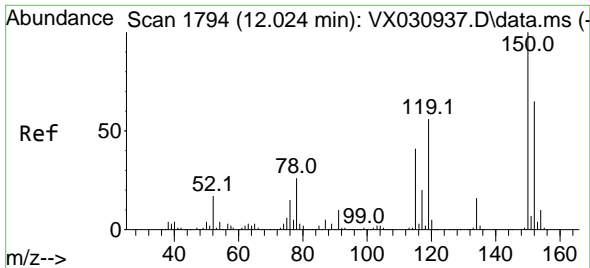


#63
 Chlorobenzene-d5
 Concen: 50.000 ug/l
 RT: 10.055 min Scan# 1471
 Delta R.T. 0.000 min
 Lab File: VX030949.D
 Acq: 30 Aug 2022 19:20



Tgt Ion: 117 Resp: 321216
 Ion Ratio Lower Upper
 117 100
 82 55.6 42.7 64.1
 119 31.5 25.4 38.2



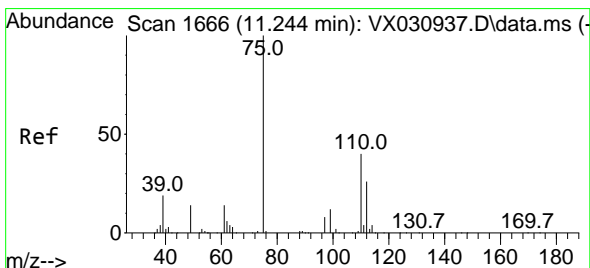
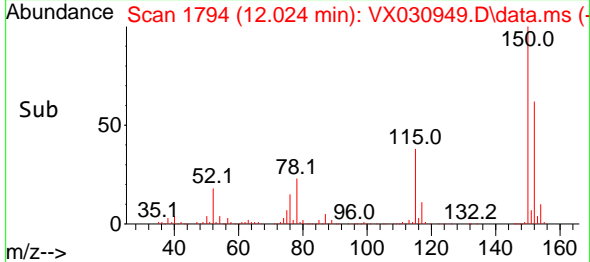
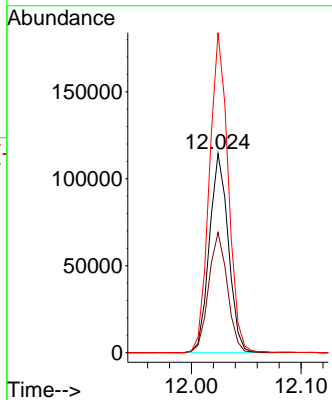
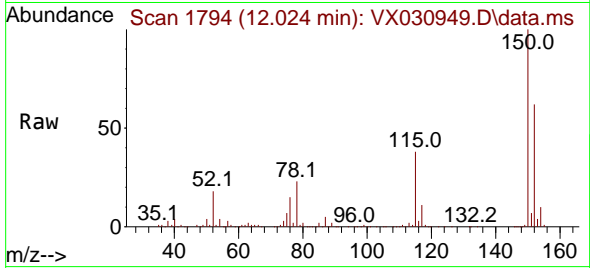


#72
 1,4-Dichlorobenzene-d4
 Concen: 50.000 ug/l
 RT: 12.024 min Scan# 11
 Delta R.T. 0.000 min
 Lab File: VX030949.D
 Acq: 30 Aug 2022 19:20

Instrument :
 MSVOA_X
 ClientSampleId :
 RE115D1-20220818DL

Tgt Ion:152 Resp: 137802

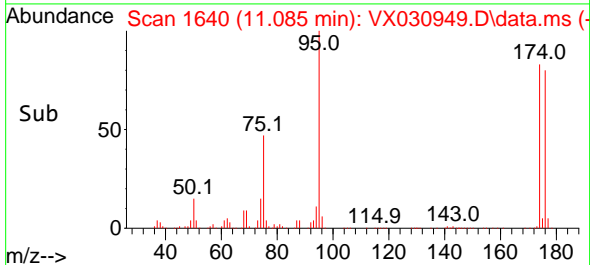
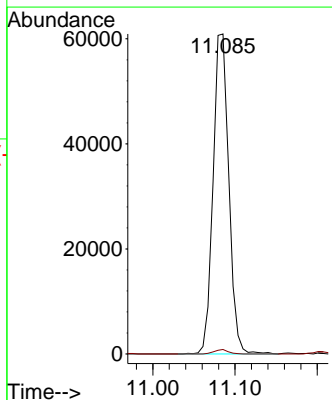
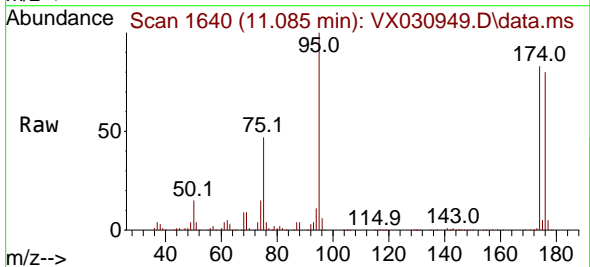
Ion	Ratio	Lower	Upper
152	100		
115	59.7	40.5	121.5
150	159.2	0.0	347.0

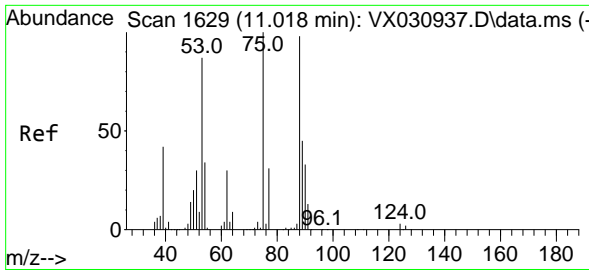


#76
 1,2,3-Trichloropropane
 Concen: 23.875 ug/l
 RT: 11.085 min Scan# 1640
 Delta R.T. -0.159 min
 Lab File: VX030949.D
 Acq: 30 Aug 2022 19:20

Tgt Ion: 75 Resp: 80995

Ion	Ratio	Lower	Upper
75	100		
77	1.2	19.8	59.3#



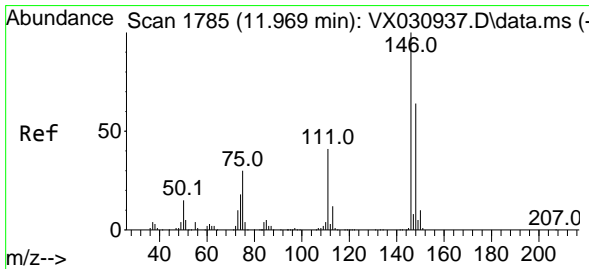
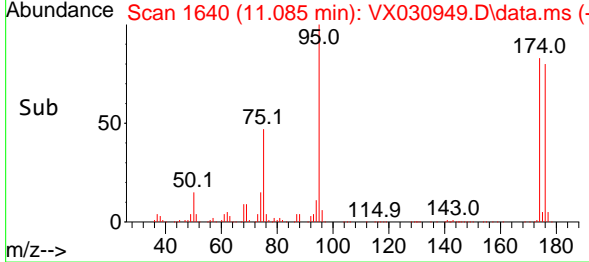
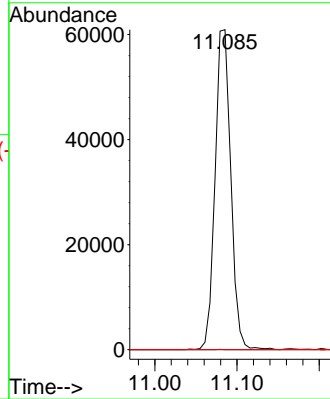
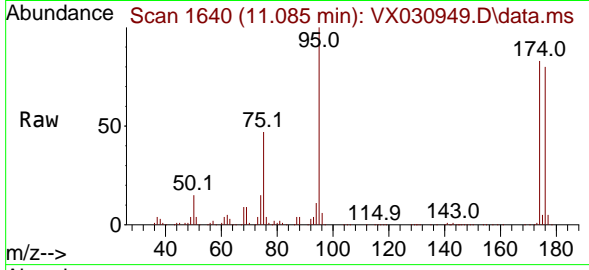


#81
 trans-1,4-Dichloro-2-butene
 Concen: 70.982 ug/l
 RT: 11.085 min Scan# 1640
 Delta R.T. 0.061 min
 Lab File: VX030949.D
 Acq: 30 Aug 2022 19:20

Instrument : MSVOA_X
 ClientSampleId : RE115D1-20220818DL

Tgt Ion: 75 Resp: 80995

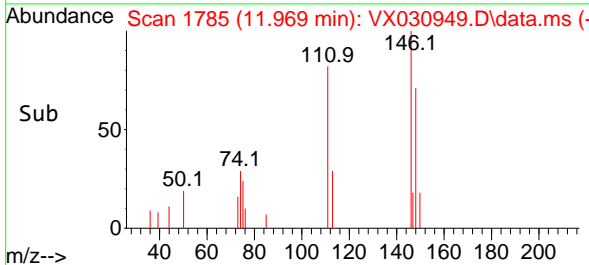
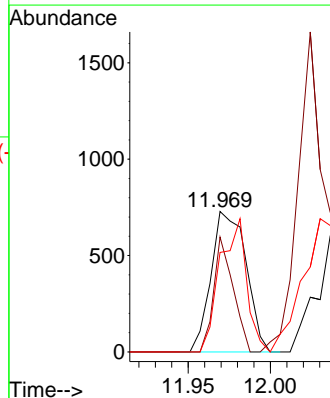
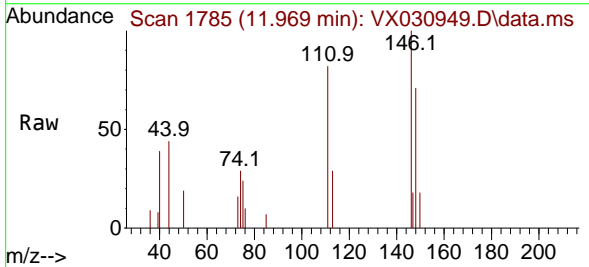
Ion	Ratio	Lower	Upper
75	100		
53	0.0	74.2	111.4#
89	0.0	34.8	52.2#

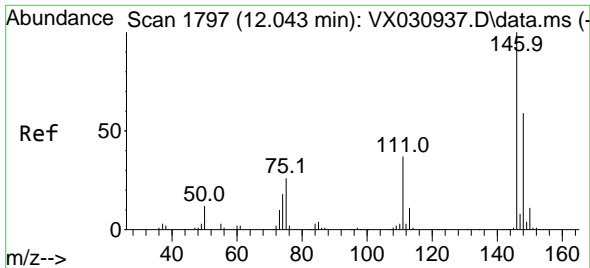


#87
 1,3-Dichlorobenzene
 Concen: 0.207 ug/l
 RT: 11.969 min Scan# 1785
 Delta R.T. 0.000 min
 Lab File: VX030949.D
 Acq: 30 Aug 2022 19:20

Tgt Ion: 146 Resp: 1077

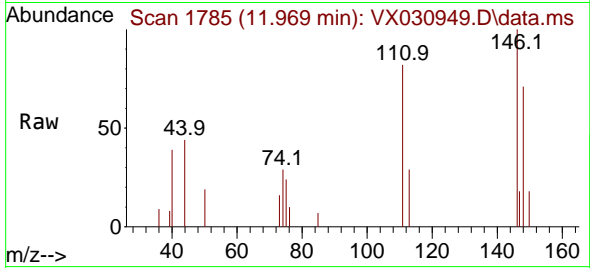
Ion	Ratio	Lower	Upper
146	100		
111	45.4	20.3	60.8
148	72.1	31.8	95.3



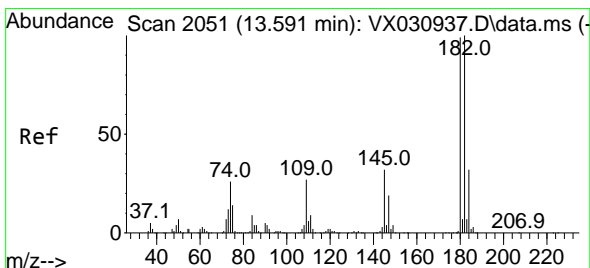
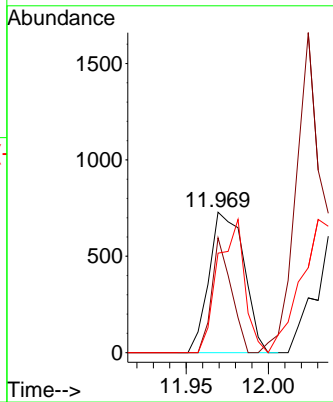
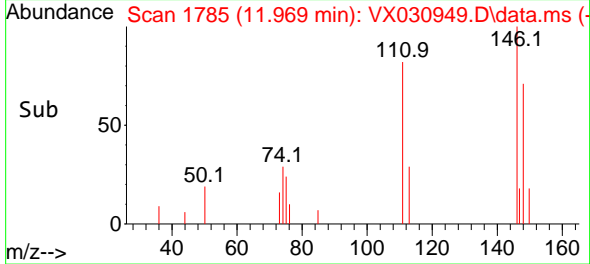


#88
 1,4-Dichlorobenzene
 Concen: 0.202 ug/l
 RT: 11.969 min Scan# 11
 Delta R.T. -0.074 min
 Lab File: VX030949.D
 Acq: 30 Aug 2022 19:20

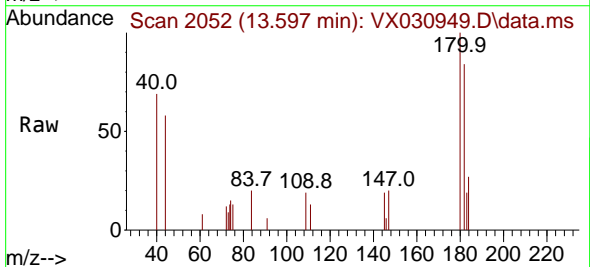
Instrument : MSVOA_X
 ClientSampleId : RE115D1-20220818DL



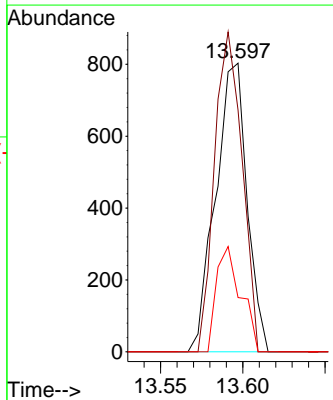
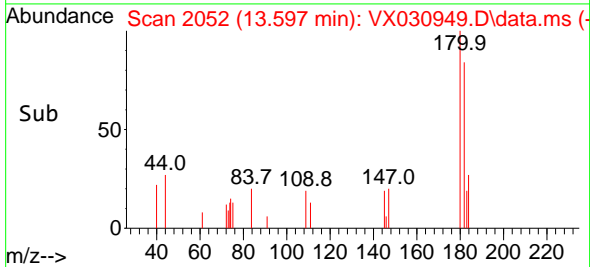
Tgt Ion:146 Resp: 1077
 Ion Ratio Lower Upper
 146 100
 111 45.4 20.3 60.9
 148 72.1 32.3 96.8

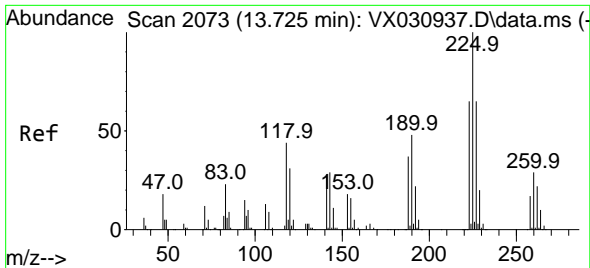


#93
 1,2,4-Trichlorobenzene
 Concen: 0.317 ug/l
 RT: 13.597 min Scan# 2052
 Delta R.T. 0.006 min
 Lab File: VX030949.D
 Acq: 30 Aug 2022 19:20



Tgt Ion:180 Resp: 1070
 Ion Ratio Lower Upper
 180 100
 182 96.6 48.2 144.6
 145 28.2 15.9 47.6



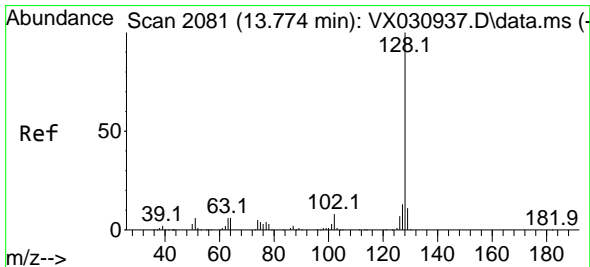
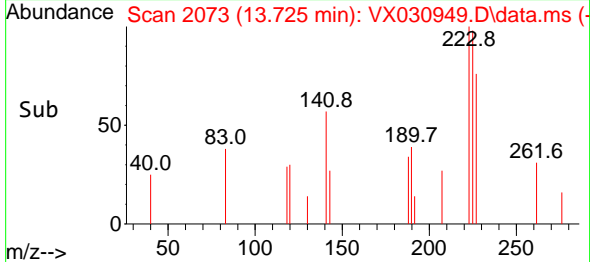
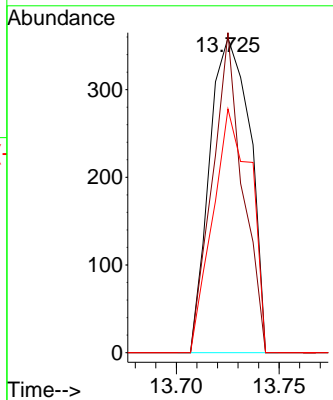
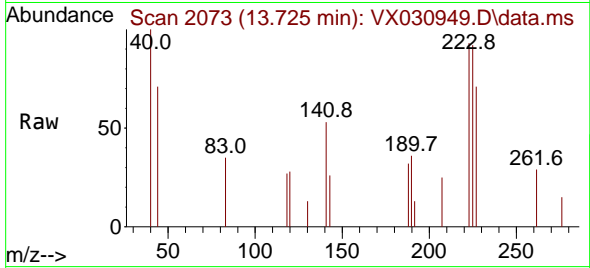


#94
 Hexachlorobutadiene
 Concen: 0.342 ug/l
 RT: 13.725 min Scan# 2073
 Delta R.T. 0.000 min
 Lab File: VX030949.D
 Acq: 30 Aug 2022 19:20

Instrument : MSVOA_X
 ClientSampleId : RE115D1-20220818DL

Tgt Ion:225 Resp: 491

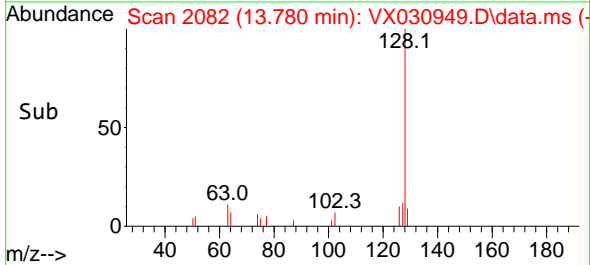
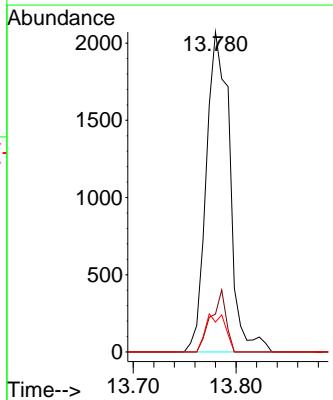
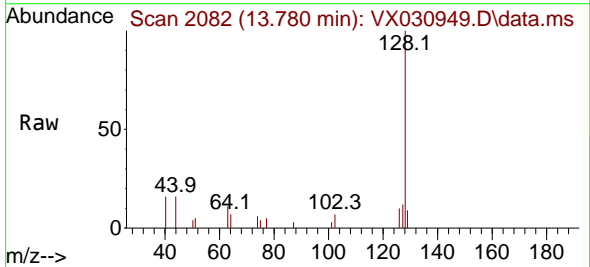
Ion	Ratio	Lower	Upper
225	100		
223	76.4	30.6	91.6
227	72.7	31.9	95.9

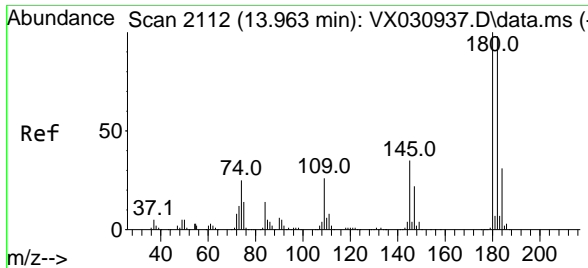


#95
 Naphthalene
 Concen: 0.272 ug/l
 RT: 13.780 min Scan# 2082
 Delta R.T. 0.006 min
 Lab File: VX030949.D
 Acq: 30 Aug 2022 19:20

Tgt Ion:128 Resp: 3289

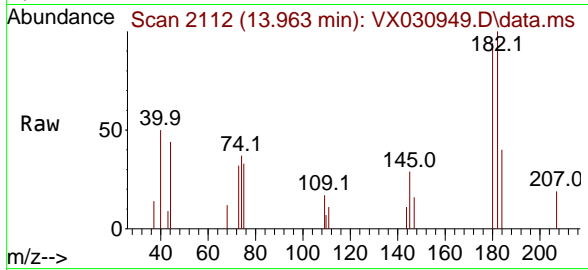
Ion	Ratio	Lower	Upper
128	100		
127	12.3	10.2	15.2
129	9.9	8.6	13.0





#96
 1,2,3-Trichlorobenzene
 Concen: 0.290 ug/l
 RT: 13.963 min Scan# 21
 Delta R.T. -0.000 min
 Lab File: VX030949.D
 Acq: 30 Aug 2022 19:20

Instrument :
 MSVOA_X
 ClientSampleId :
 RE115D1-20220818DL



Tgt Ion:180 Resp: 989

Ion	Ratio	Lower	Upper
180	100		
182	82.4	47.0	141.0
145	34.8	17.0	50.9

