

Data Path : Z:\voasrv\HPCHEM1\MSVOA\_X\Data\VX083023\  
 Data File : VX037390.D  
 Acq On : 30 Aug 2023 15:41  
 Operator : JC/MD  
 Sample : 04229-03  
 Misc : 5.0mL/MSVOA\_X/WATER  
 ALS Vial : 16 Sample Multiplier: 1

Instrument :  
 MSVOA\_X  
 ClientSampleId :  
 MW-01-9.5-082923

Quant Time: Aug 31 02:24:35 2023  
 Quant Method : Z:\voasrv\HPCHEM1\MSVOA\_X\Method\82X081723W.M  
 Quant Title : SW846 8260  
 QLast Update : Fri Aug 18 09:30:38 2023  
 Response via : Initial Calibration

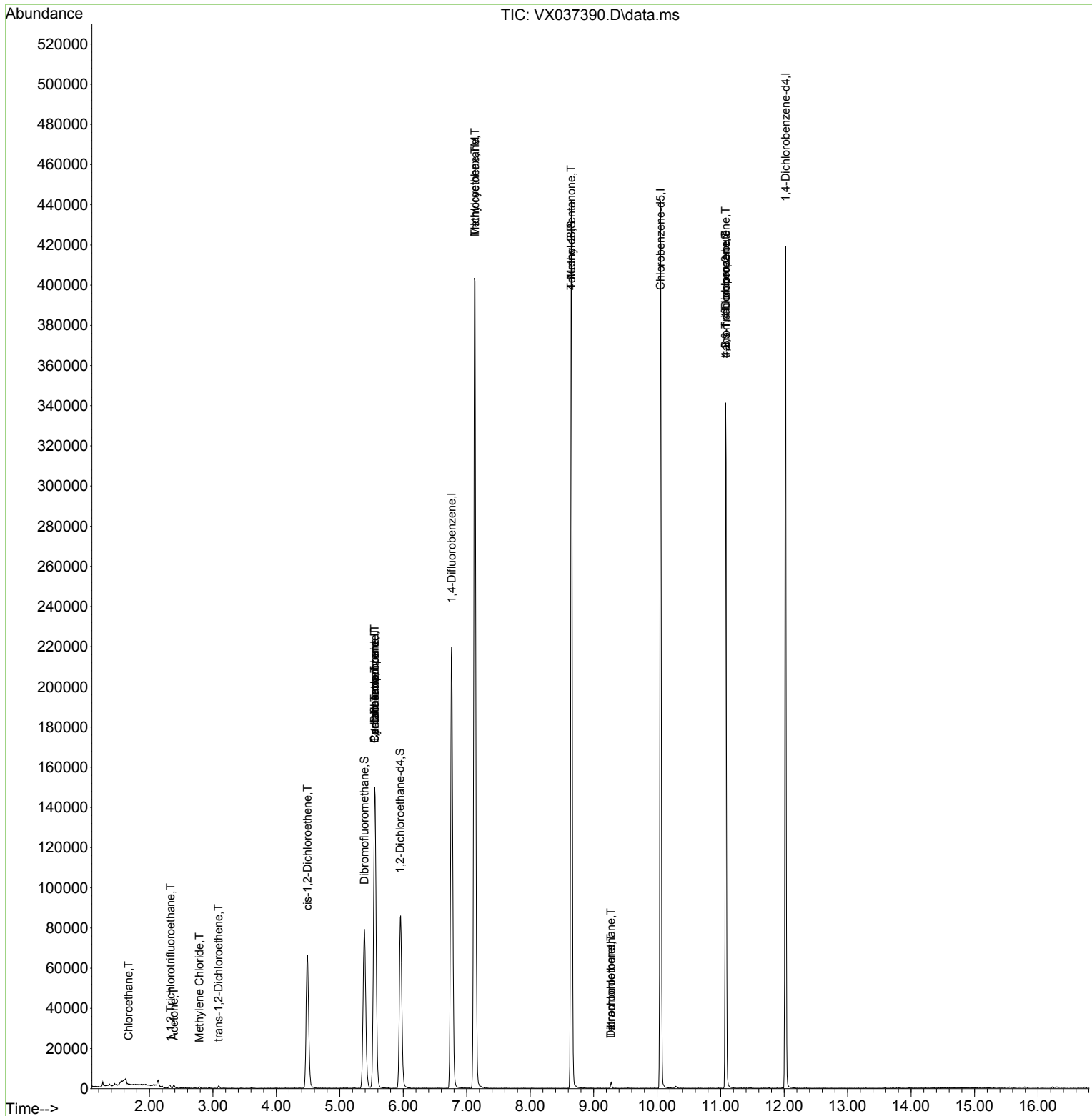
Compound	R.T.	QIon	Response	Conc	Units	Dev(Min)
-----						
Internal Standards						
1) Pentafluorobenzene	5.550	168	142120	50.000	ug/l	0.00
34) 1,4-Difluorobenzene	6.763	114	233376	50.000	ug/l	0.00
63) Chlorobenzene-d5	10.055	117	206524	50.000	ug/l	0.00
72) 1,4-Dichlorobenzene-d4	12.024	152	88789	50.000	ug/l	0.00
System Monitoring Compounds						
33) 1,2-Dichloroethane-d4	5.952	65	87140	42.530	ug/l	0.00
Spiked Amount	50.000	Range 78 - 117	Recovery	=	85.060%	
35) Dibromofluoromethane	5.385	113	71176	46.051	ug/l	0.00
Spiked Amount	50.000	Range 75 - 124	Recovery	=	92.100%	
50) Toluene-d8	8.647	98	273218	48.733	ug/l	0.00
Spiked Amount	50.000	Range 92 - 112	Recovery	=	97.460%	
62) 4-Bromofluorobenzene	11.079	95	97496	44.251	ug/l	0.00
Spiked Amount	50.000	Range 83 - 123	Recovery	=	88.500%	
Target Compounds						
						Qvalue
6) Chloroethane	1.672	64	276	0.298	ug/l #	43
9) 1,1,2-Trichlorotrifluo...	2.331	101	446	0.297	ug/l #	93
16) Acetone	2.386	43	1981	2.471	ug/l	98
20) Methylene Chloride	2.788	84	418	0.233	ug/l #	72
21) trans-1,2-Dichloroethene	3.087	96	523	0.314	ug/l #	69
27) cis-1,2-Dichloroethene	4.489	96	45770	23.345	ug/l	79
31) Cyclohexane	5.550	56	2720	1.181	ug/l #	1
36) 1,1-Dichloropropene	5.550	75	11324	5.157	ug/l #	50
38) Carbon Tetrachloride	5.550	117	14913	6.252	ug/l #	14
39) Methylcyclohexane	7.129	83	1870	0.811	ug/l #	1
44) Trichloroethene	7.129	130	166121	93.025	ug/l	94
51) 4-Methyl-2-Pentanone	8.647	43	1041	0.481	ug/l #	1
60) Dibromochloromethane	9.275	129	547	0.303	ug/l #	11
64) Tetrachloroethene	9.275	164	590	0.392	ug/l #	88
76) 1,2,3-Trichloropropane	11.079	75	48413	25.603	ug/l #	38
81) trans-1,4-Dichloro-2-b...	11.079	75	48413	71.510	ug/l #	5

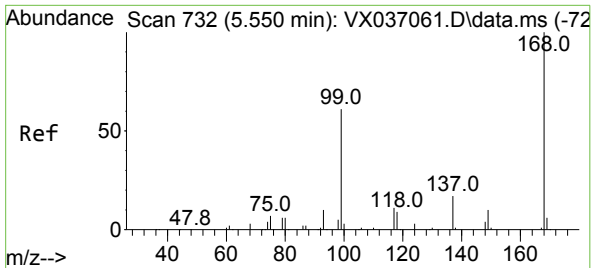
(#) = qualifier out of range (m) = manual integration (+) = signals summed

Data Path : Z:\voasrv\HPCHEM1\MSVOA\_X\Data\VX083023\  
 Data File : VX037390.D  
 Acq On : 30 Aug 2023 15:41  
 Operator : JC/MD  
 Sample : 04229-03  
 Misc : 5.0mL/MSVOA\_X/WATER  
 ALS Vial : 16 Sample Multiplier: 1

Instrument :  
 MSVOA\_X  
 ClientSampleId :  
 MW-01-9.5-082923

Quant Time: Aug 31 02:24:35 2023  
 Quant Method : Z:\voasrv\HPCHEM1\MSVOA\_X\Method\82X081723W.M  
 Quant Title : SW846 8260  
 QLast Update : Fri Aug 18 09:30:38 2023  
 Response via : Initial Calibration

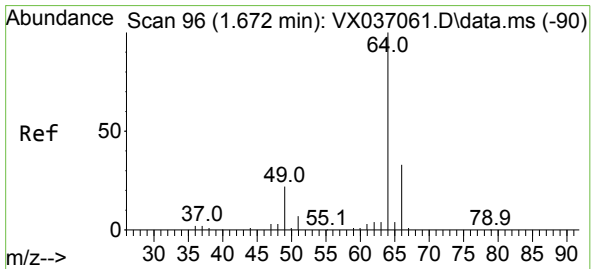
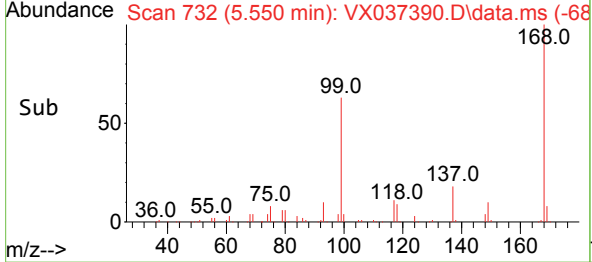
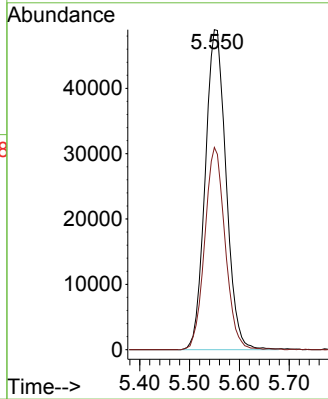
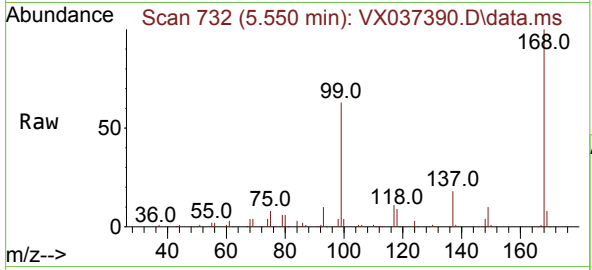




#1  
 Pentafluorobenzene  
 Concen: 50.000 ug/l  
 RT: 5.550 min Scan# 71  
 Delta R.T. -0.000 min  
 Lab File: VX037390.D  
 Acq: 30 Aug 2023 15:41

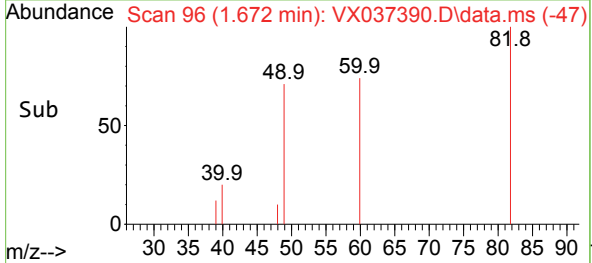
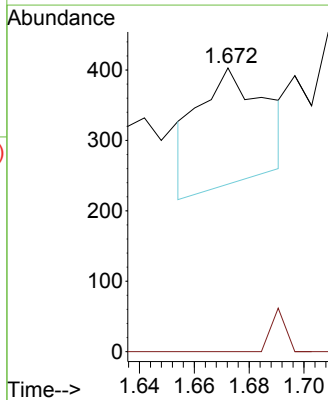
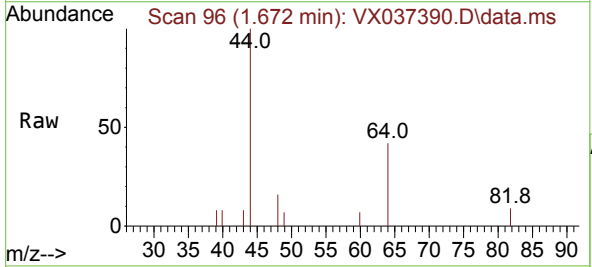
Instrument : MSVOA\_X  
 ClientSampleId : MW-01-9.5-082923

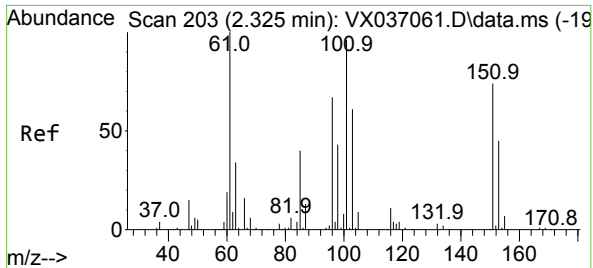
Tgt Ion:168 Resp: 142120  
 Ion Ratio Lower Upper  
 168 100  
 99 63.2 56.6 85.0



#6  
 Chloroethane  
 Concen: 0.298 ug/l  
 RT: 1.672 min Scan# 96  
 Delta R.T. 0.000 min  
 Lab File: VX037390.D  
 Acq: 30 Aug 2023 15:41

Tgt Ion: 64 Resp: 276  
 Ion Ratio Lower Upper  
 64 100  
 66 0.0 25.1 37.7#

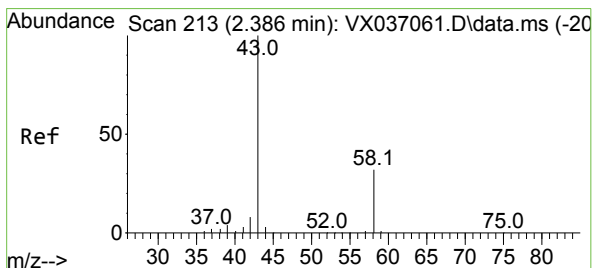
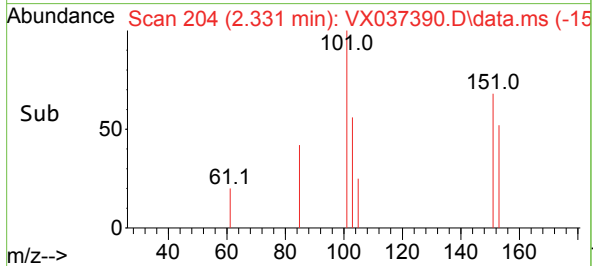
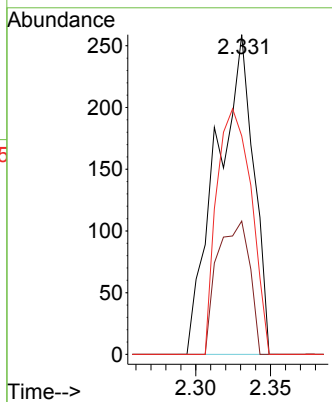
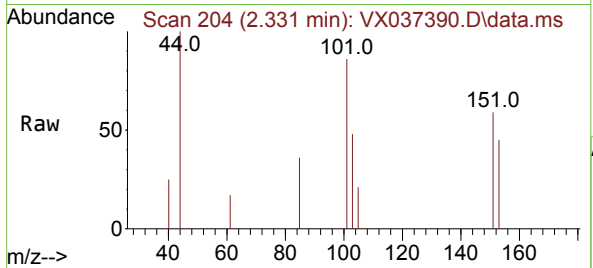




#9  
 1,1,2-Trichlorotrifluoroethane  
 Concen: 0.297 ug/l  
 RT: 2.331 min Scan# 204  
 Delta R.T. 0.006 min  
 Lab File: VX037390.D  
 Acq: 30 Aug 2023 15:41

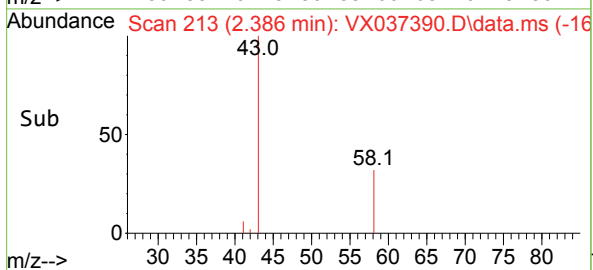
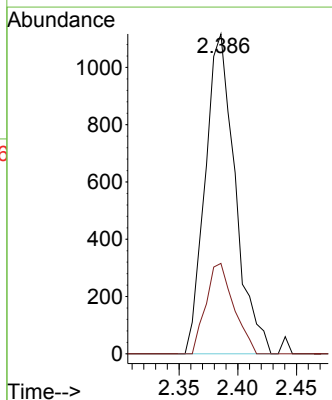
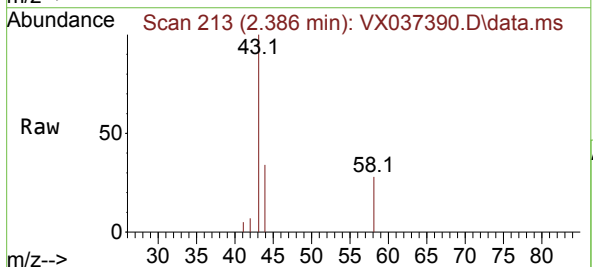
Instrument : MSVOA\_X  
 ClientSampleId : MW-01-9.5-082923

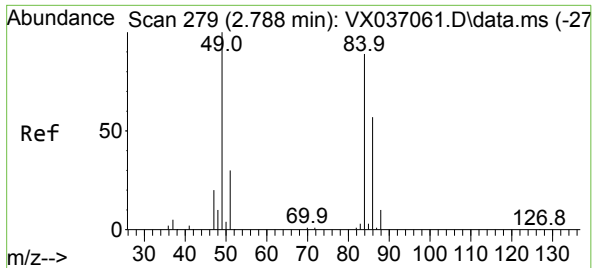
Tgt Ion	Resp	Lower	Upper
101	100		
85	36.3	37.0	55.6#
151	71.5	58.6	87.8



#16  
 Acetone  
 Concen: 2.471 ug/l  
 RT: 2.386 min Scan# 213  
 Delta R.T. -0.000 min  
 Lab File: VX037390.D  
 Acq: 30 Aug 2023 15:41

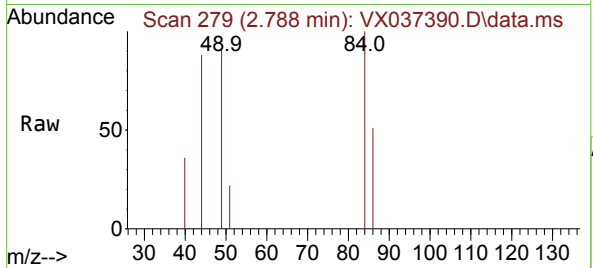
Tgt Ion	Resp	Lower	Upper
43	100		
58	28.3	21.9	32.9





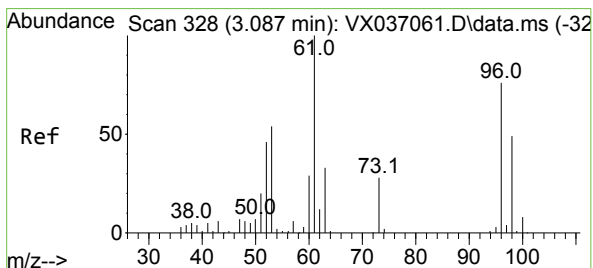
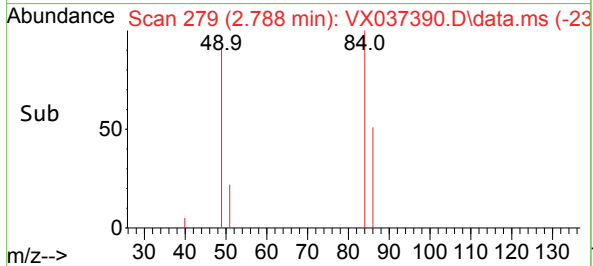
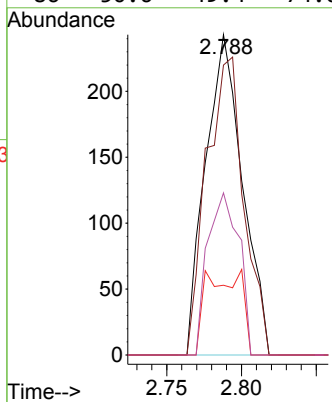
#20  
 Methylene Chloride  
 Concen: 0.233 ug/l  
 RT: 2.788 min Scan# 21  
 Delta R.T. -0.000 min  
 Lab File: VX037390.D  
 Acq: 30 Aug 2023 15:41

Instrument : MSVOA\_X  
 ClientSampleId : MW-01-9.5-082923



Tgt Ion: 84 Resp: 418

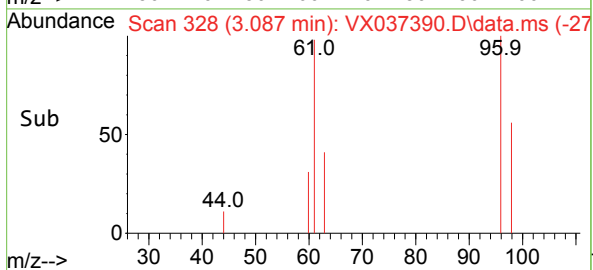
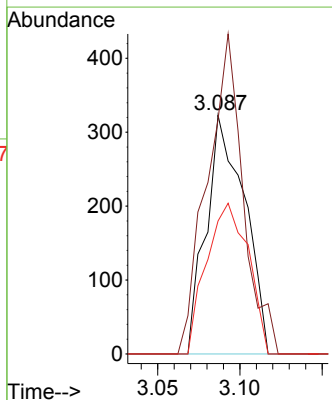
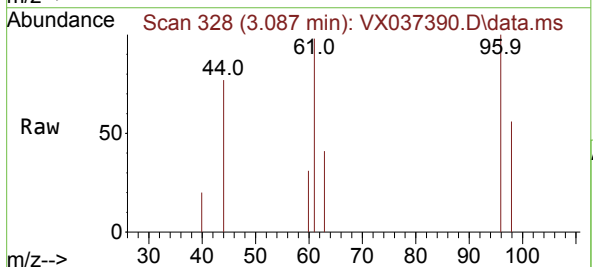
Ion	Ratio	Lower	Upper
84	100		
49	90.5	103.6	155.4#
51	21.8	33.8	50.6#
86	50.6	49.4	74.0

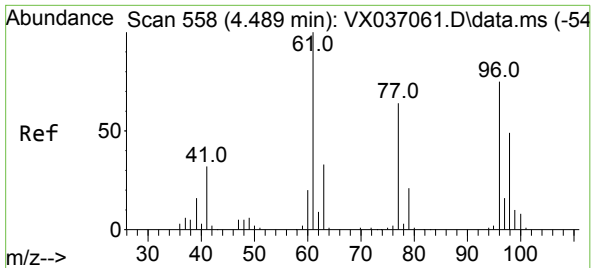


#21  
 trans-1,2-Dichloroethene  
 Concen: 0.314 ug/l  
 RT: 3.087 min Scan# 328  
 Delta R.T. -0.000 min  
 Lab File: VX037390.D  
 Acq: 30 Aug 2023 15:41

Tgt Ion: 96 Resp: 523

Ion	Ratio	Lower	Upper
96	100		
61	98.1	119.2	178.8#
98	55.7	48.7	73.1

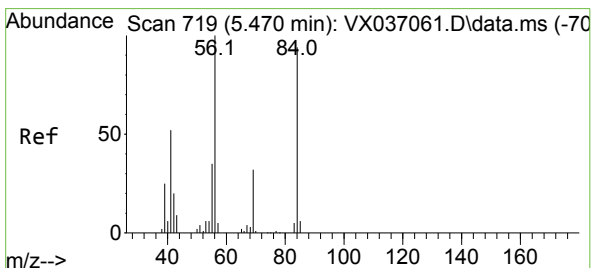
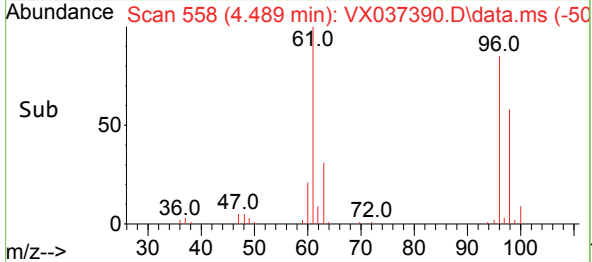
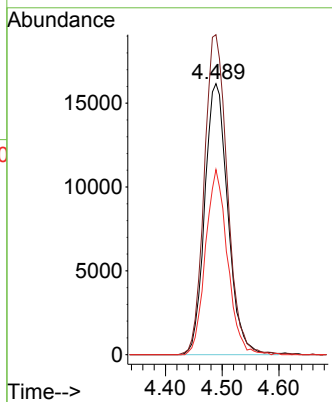
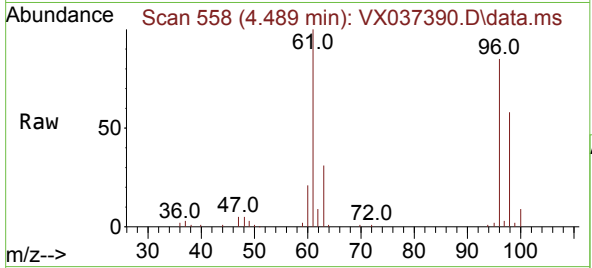




#27  
 cis-1,2-Dichloroethene  
 Concen: 23.345 ug/l  
 RT: 4.489 min Scan# 511  
 Delta R.T. -0.000 min  
 Lab File: VX037390.D  
 Acq: 30 Aug 2023 15:41

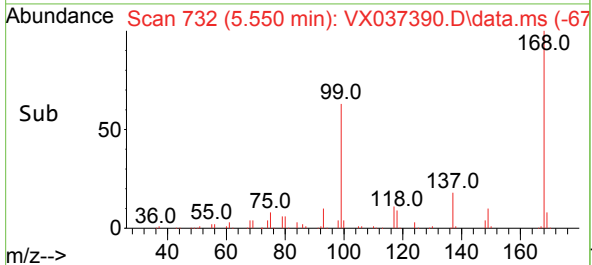
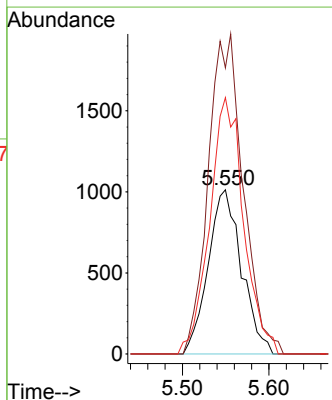
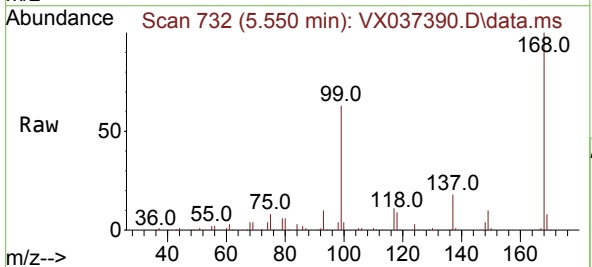
Instrument : MSVOA\_X  
 ClientSampleId : MW-01-9.5-082923

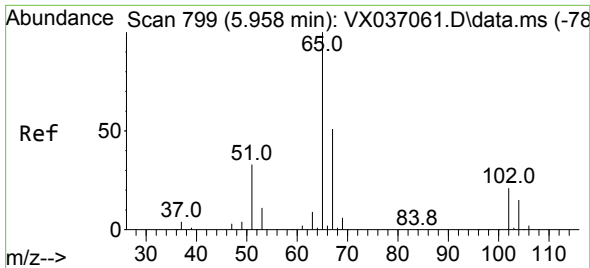
Tgt Ion	Resp	Lower	Upper
96	45770		
61	117.8	0.0	312.2
98	64.9	0.0	129.0



#31  
 Cyclohexane  
 Concen: 1.181 ug/l  
 RT: 5.550 min Scan# 732  
 Delta R.T. 0.079 min  
 Lab File: VX037390.D  
 Acq: 30 Aug 2023 15:41

Tgt Ion	Resp	Lower	Upper
56	2720		
69	174.2	23.4	35.2#
84	156.1	65.9	98.9#

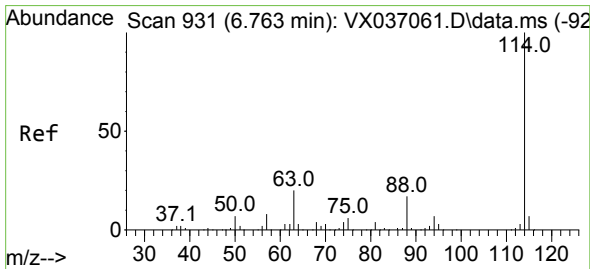
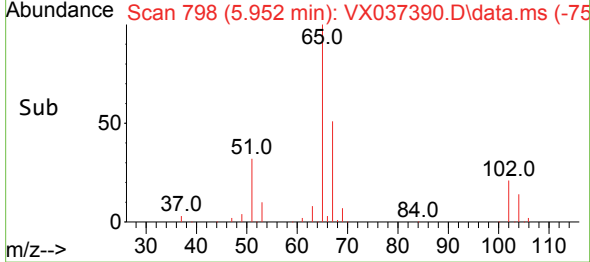
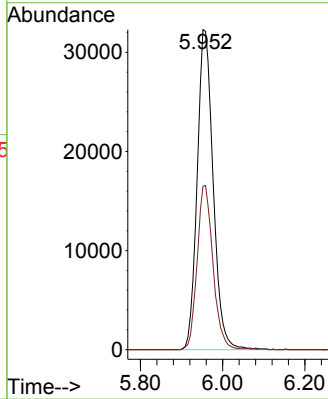
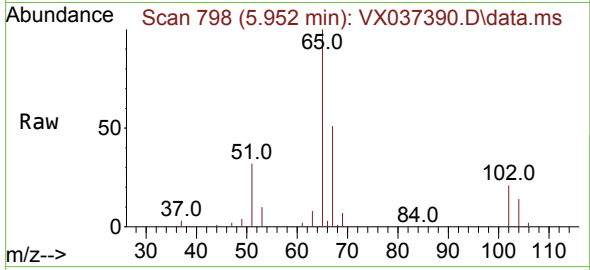




#33  
 1,2-Dichloroethane-d4  
 Concen: 42.530 ug/l  
 RT: 5.952 min Scan# 798  
 Delta R.T. -0.006 min  
 Lab File: VX037390.D  
 Acq: 30 Aug 2023 15:41

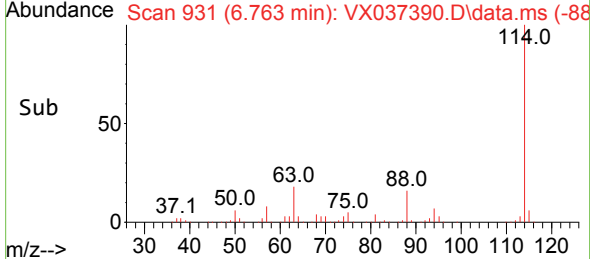
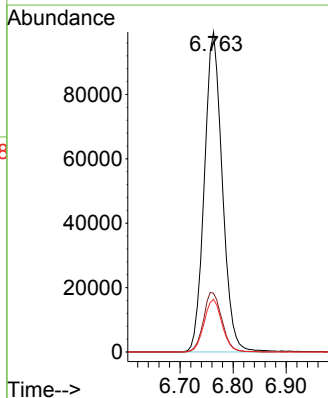
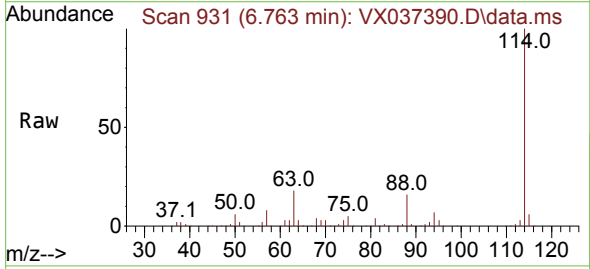
Instrument : MSVOA\_X  
 ClientSampleId : MW-01-9.5-082923

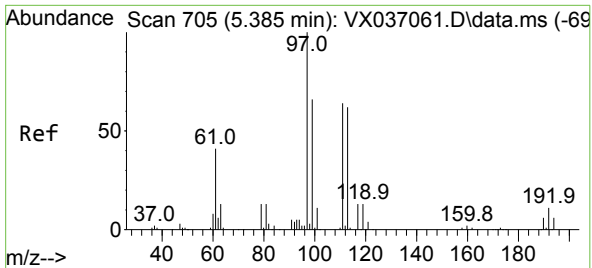
Tgt Ion: 65 Resp: 87140  
 Ion Ratio Lower Upper  
 65 100  
 67 50.6 0.0 100.2



#34  
 1,4-Difluorobenzene  
 Concen: 50.000 ug/l  
 RT: 6.763 min Scan# 931  
 Delta R.T. -0.000 min  
 Lab File: VX037390.D  
 Acq: 30 Aug 2023 15:41

Tgt Ion: 114 Resp: 233376  
 Ion Ratio Lower Upper  
 114 100  
 63 18.3 0.0 45.0  
 88 16.5 0.0 36.6

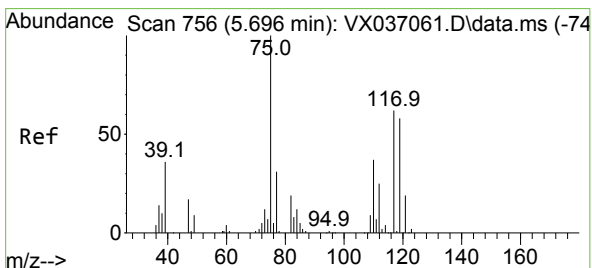
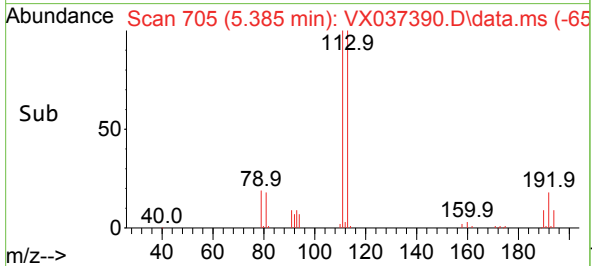
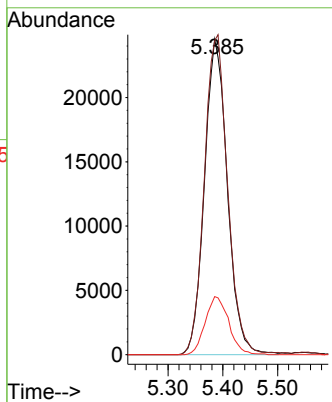
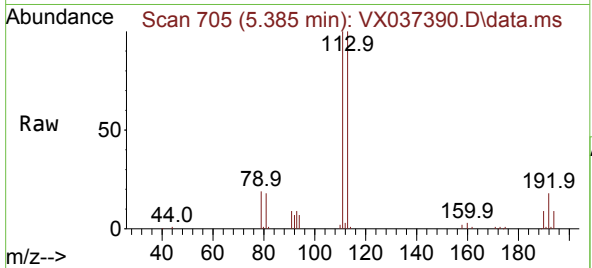




#35  
 Dibromofluoromethane  
 Concen: 46.051 ug/l  
 RT: 5.385 min Scan# 705  
 Delta R.T. -0.000 min  
 Lab File: VX037390.D  
 Acq: 30 Aug 2023 15:41

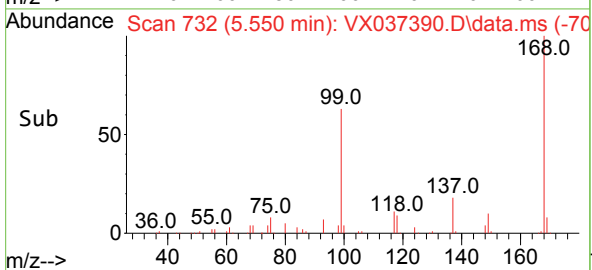
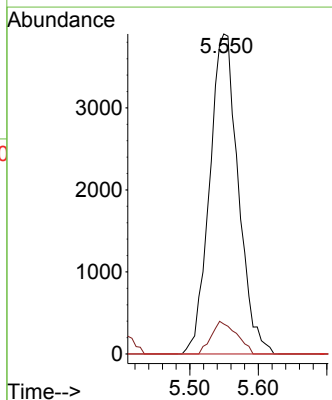
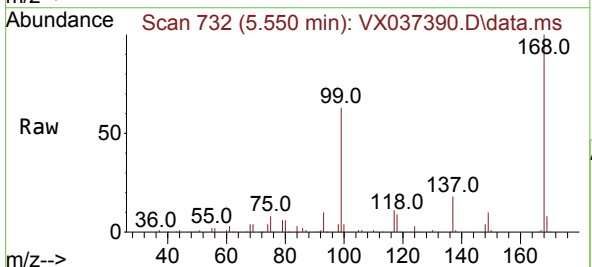
Instrument : MSVOA\_X  
 ClientSampleId : MW-01-9.5-082923

Tgt Ion	Resp	Lower	Upper
113	100		
111	103.4	82.9	124.3
192	18.9	13.3	19.9

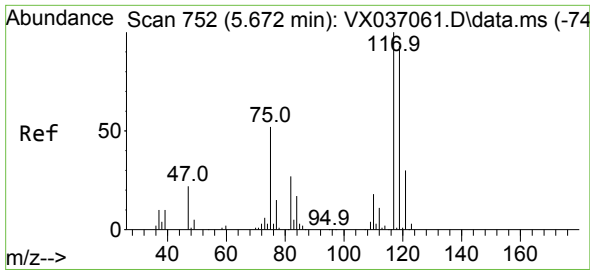


#36  
 1,1-Dichloropropene  
 Concen: 5.157 ug/l  
 RT: 5.550 min Scan# 732  
 Delta R.T. -0.146 min  
 Lab File: VX037390.D  
 Acq: 30 Aug 2023 15:41

Tgt Ion	Resp	Lower	Upper
75	100		
110	9.0	17.0	50.9#
77	0.0	24.7	37.1#

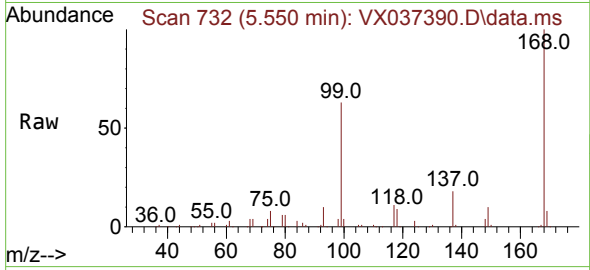




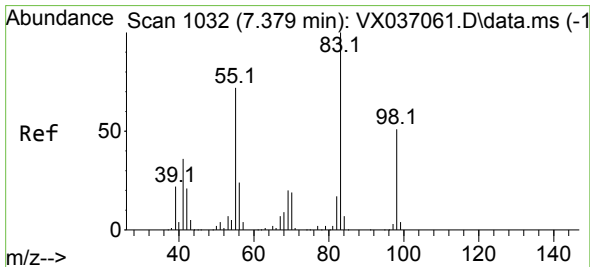
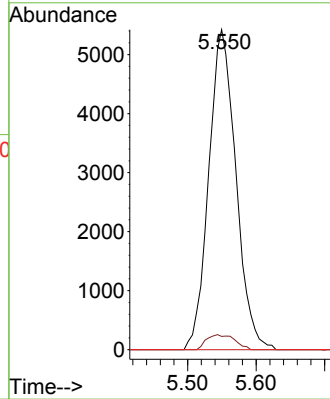
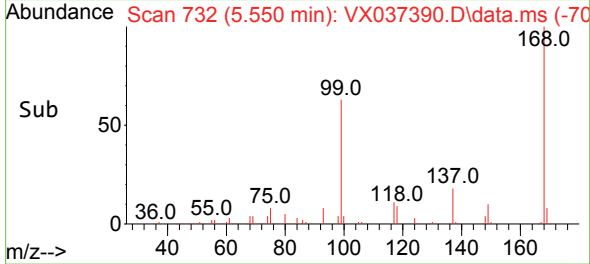


#38  
 Carbon Tetrachloride  
 Concen: 6.252 ug/l  
 RT: 5.550 min Scan# 711  
 Delta R.T. -0.122 min  
 Lab File: VX037390.D  
 Acq: 30 Aug 2023 15:41

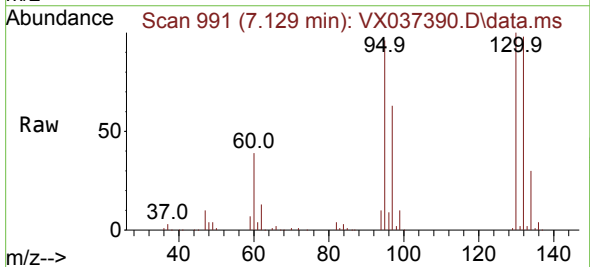
Instrument : MSVOA\_X  
 ClientSampleId : MW-01-9.5-082923



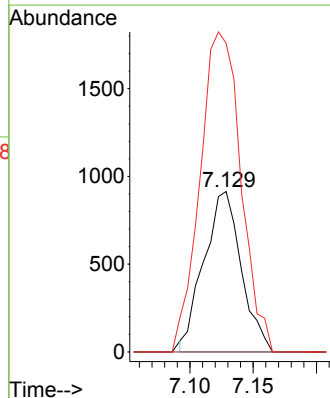
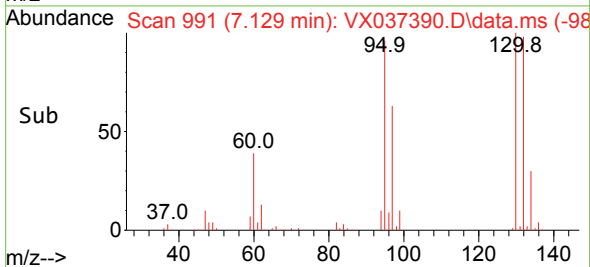
Tgt Ion:117 Resp: 14913  
 Ion Ratio Lower Upper  
 117 100  
 119 4.2 78.2 117.2#  
 121 0.0 24.4 36.6#

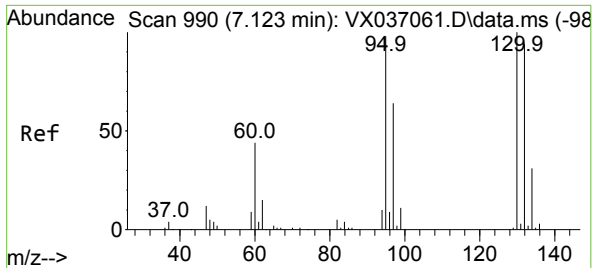


#39  
 Methylcyclohexane  
 Concen: 0.811 ug/l  
 RT: 7.129 min Scan# 991  
 Delta R.T. -0.250 min  
 Lab File: VX037390.D  
 Acq: 30 Aug 2023 15:41



Tgt Ion: 83 Resp: 1870  
 Ion Ratio Lower Upper  
 83 100  
 55 0.0 64.6 97.0#  
 98 192.5 36.7 55.1#

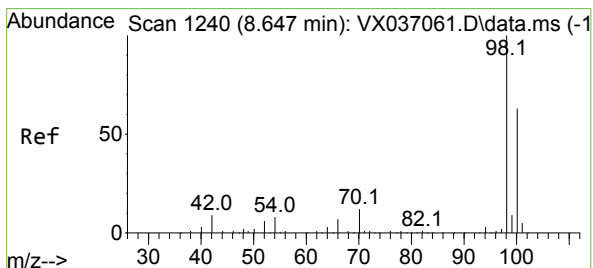
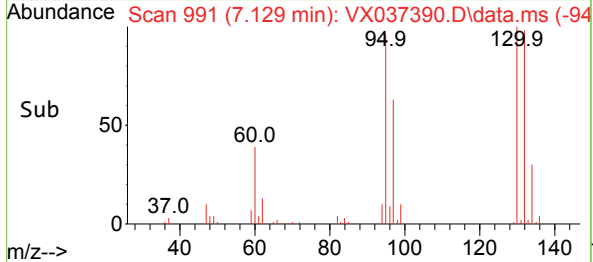
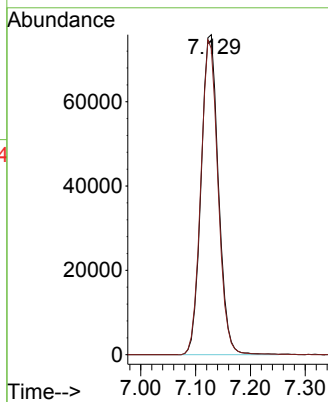
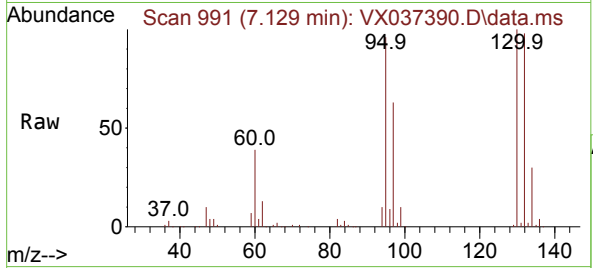




#44  
 Trichloroethene  
 Concen: 93.025 ug/l  
 RT: 7.129 min Scan# 991  
 Delta R.T. 0.006 min  
 Lab File: VX037390.D  
 Acq: 30 Aug 2023 15:41

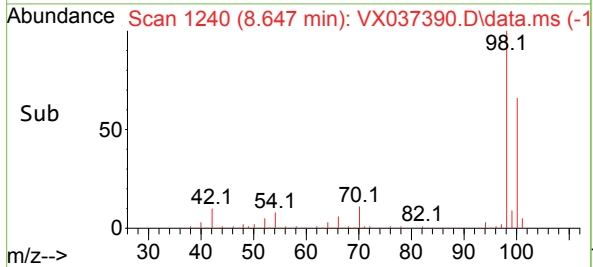
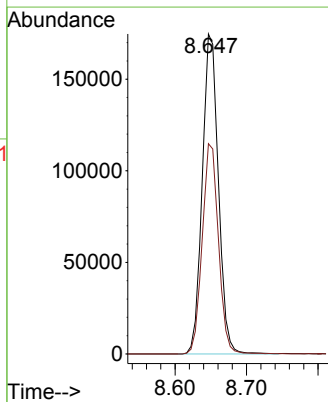
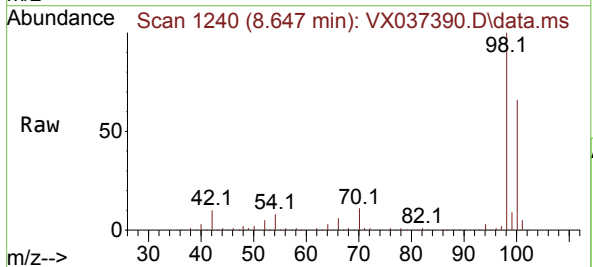
Instrument : MSVOA\_X  
 ClientSampleId : MW-01-9.5-082923

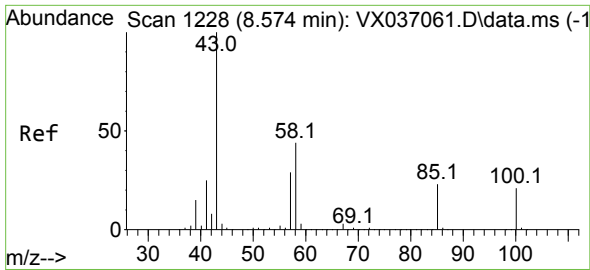
Tgt Ion:130 Resp: 166121  
 Ion Ratio Lower Upper  
 130 100  
 95 95.7 0.0 204.4



#50  
 Toluene-d8  
 Concen: 48.733 ug/l  
 RT: 8.647 min Scan# 1240  
 Delta R.T. -0.000 min  
 Lab File: VX037390.D  
 Acq: 30 Aug 2023 15:41

Tgt Ion: 98 Resp: 273218  
 Ion Ratio Lower Upper  
 98 100  
 100 66.3 53.1 79.7

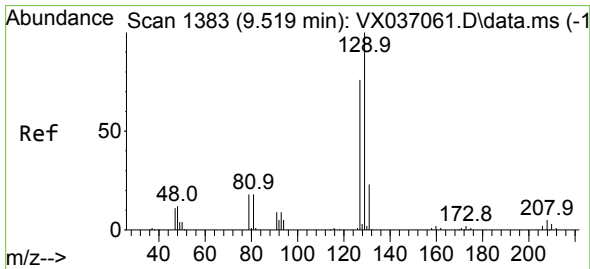
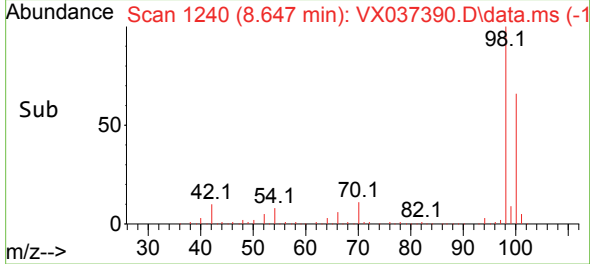
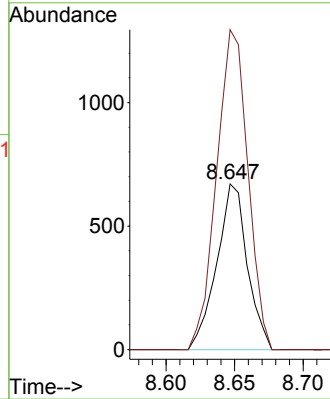
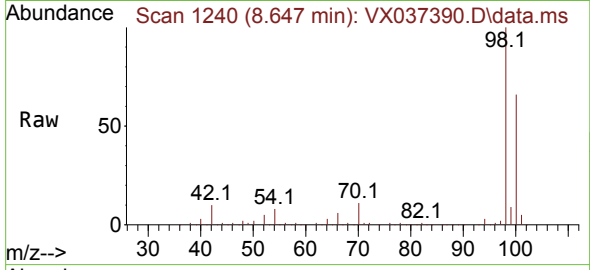




#51  
 4-Methyl-2-Pentanone  
 Concen: 0.481 ug/l  
 RT: 8.647 min Scan# 11  
 Delta R.T. 0.073 min  
 Lab File: VX037390.D  
 Acq: 30 Aug 2023 15:41

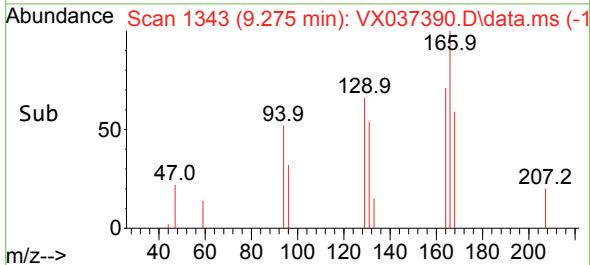
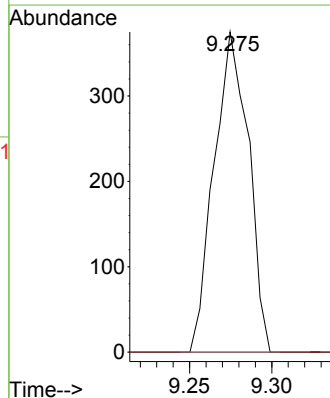
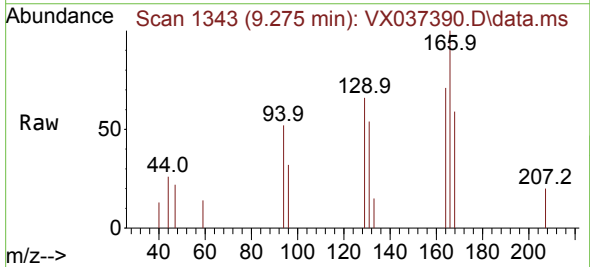
Instrument :  
 MSVOA\_X  
 ClientSampleId :  
 MW-01-9.5-082923

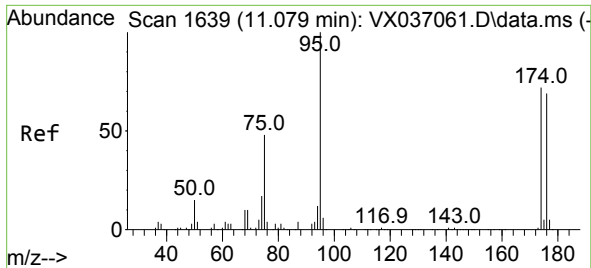
Tgt Ion: 43 Resp: 1041  
 Ion Ratio Lower Upper  
 43 100  
 58 198.0 30.4 45.6#



#60  
 Dibromochloromethane  
 Concen: 0.303 ug/l  
 RT: 9.275 min Scan# 1343  
 Delta R.T. -0.244 min  
 Lab File: VX037390.D  
 Acq: 30 Aug 2023 15:41

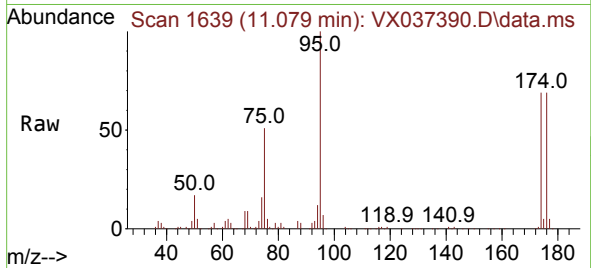
Tgt Ion: 129 Resp: 547  
 Ion Ratio Lower Upper  
 129 100  
 127 0.0 38.8 116.4#



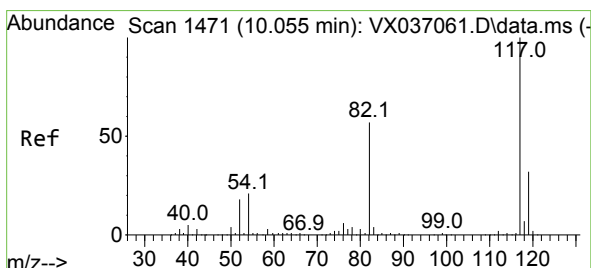
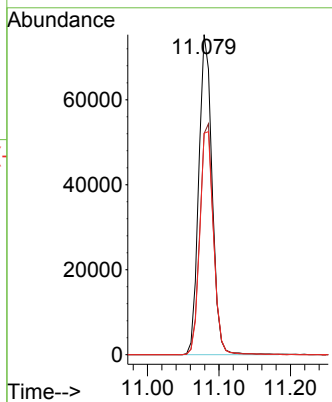
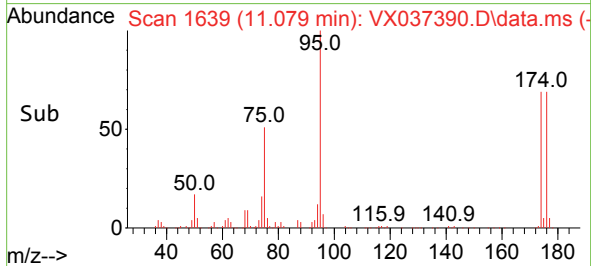


#62  
 4-Bromofluorobenzene  
 Concen: 44.251 ug/l  
 RT: 11.079 min Scan# 1639  
 Delta R.T. -0.000 min  
 Lab File: VX037390.D  
 Acq: 30 Aug 2023 15:41

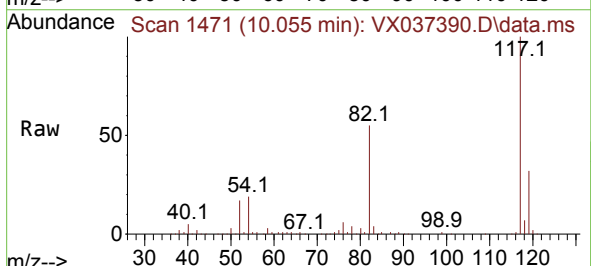
Instrument : MSVOA\_X  
 ClientSampleId : MW-01-9.5-082923



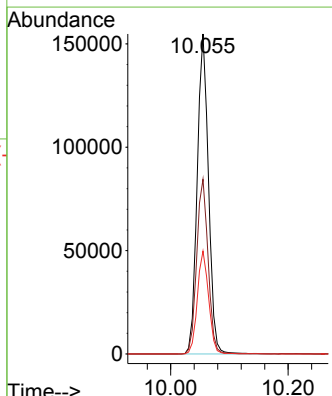
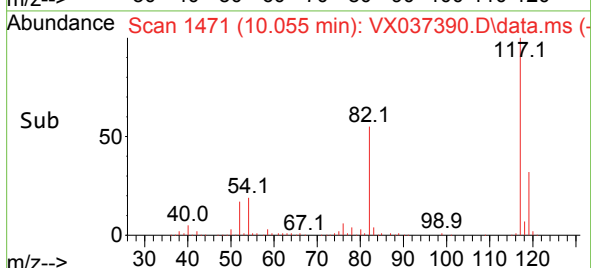
Tgt Ion: 95 Resp: 97496  
 Ion Ratio Lower Upper  
 95 100  
 174 73.5 0.0 135.6  
 176 72.1 0.0 131.0

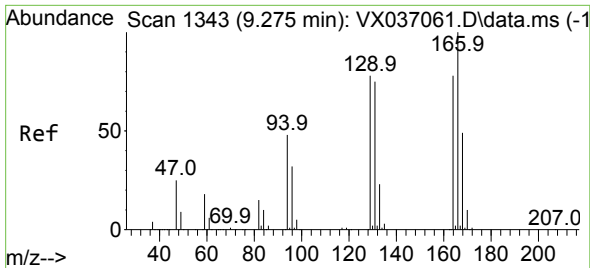


#63  
 Chlorobenzene-d5  
 Concen: 50.000 ug/l  
 RT: 10.055 min Scan# 1471  
 Delta R.T. -0.000 min  
 Lab File: VX037390.D  
 Acq: 30 Aug 2023 15:41



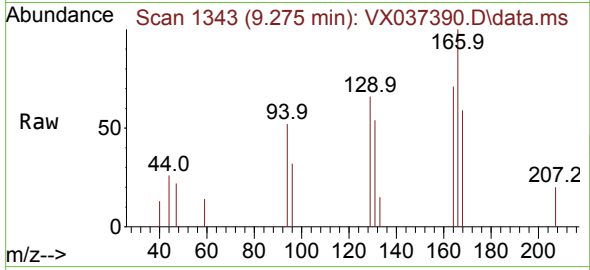
Tgt Ion: 117 Resp: 206524  
 Ion Ratio Lower Upper  
 117 100  
 82 54.6 46.2 69.4  
 119 32.2 25.5 38.3



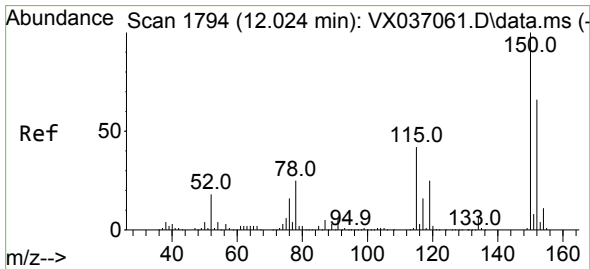
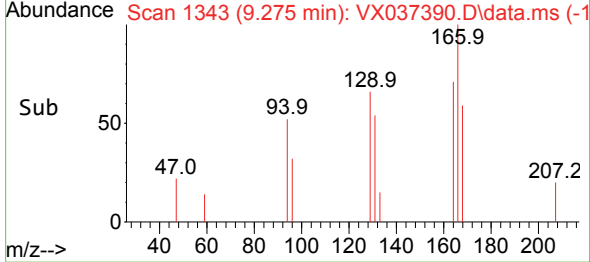
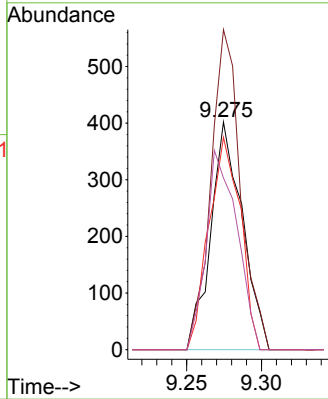


#64  
 Tetrachloroethene  
 Concen: 0.392 ug/l  
 RT: 9.275 min Scan# 11  
 Delta R.T. -0.000 min  
 Lab File: VX037390.D  
 Acq: 30 Aug 2023 15:41

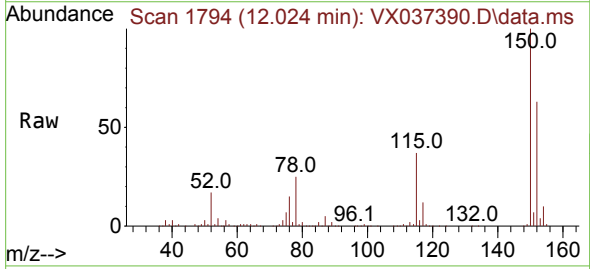
Instrument : MSVOA\_X  
 ClientSampleId : MW-01-9.5-082923



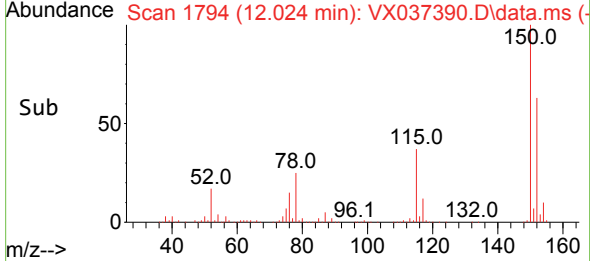
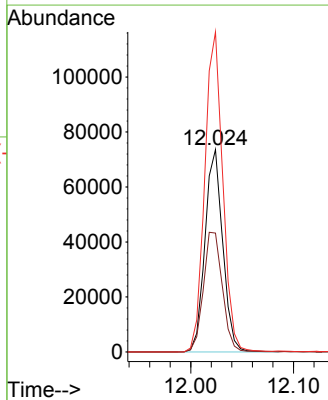
Tgt Ion:164 Resp: 590  
 Ion Ratio Lower Upper  
 164 100  
 166 140.5 102.7 154.1  
 129 93.3 80.4 120.6  
 131 75.4 76.5 114.7#

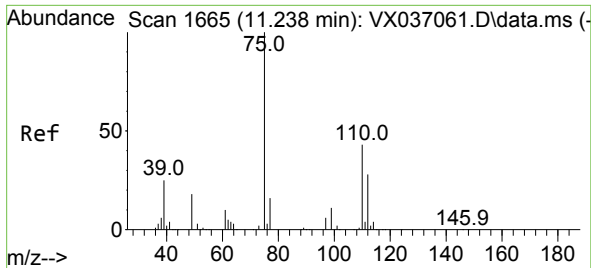


#72  
 1,4-Dichlorobenzene-d4  
 Concen: 50.000 ug/l  
 RT: 12.024 min Scan# 1794  
 Delta R.T. -0.000 min  
 Lab File: VX037390.D  
 Acq: 30 Aug 2023 15:41



Tgt Ion:152 Resp: 88789  
 Ion Ratio Lower Upper  
 152 100  
 115 63.1 43.3 129.9  
 150 159.7 0.0 345.0

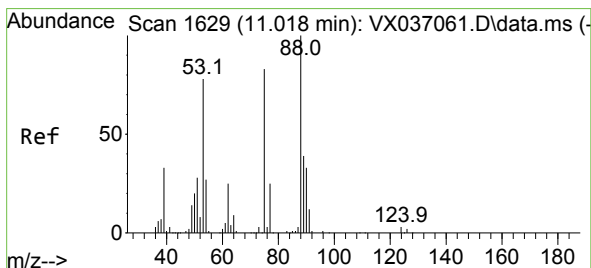
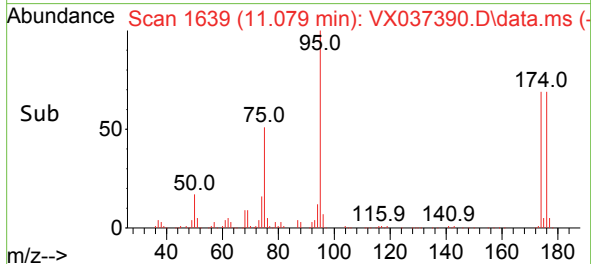
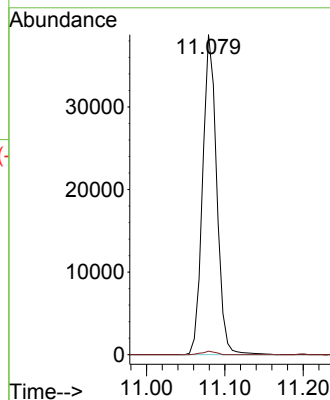
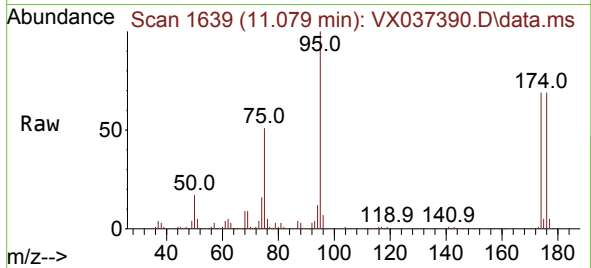




#76  
 1,2,3-Trichloropropane  
 Concen: 25.603 ug/l  
 RT: 11.079 min Scan# 1639  
 Delta R.T. -0.159 min  
 Lab File: VX037390.D  
 Acq: 30 Aug 2023 15:41

Instrument : MSVOA\_X  
 ClientSampleId : MW-01-9.5-082923

Tgt Ion: 75 Resp: 48413  
 Ion Ratio Lower Upper  
 75 100  
 77 1.0 19.1 57.5#



#81  
 trans-1,4-Dichloro-2-butene  
 Concen: 71.510 ug/l  
 RT: 11.079 min Scan# 1639  
 Delta R.T. 0.061 min  
 Lab File: VX037390.D  
 Acq: 30 Aug 2023 15:41

Tgt Ion: 75 Resp: 48413  
 Ion Ratio Lower Upper  
 75 100  
 53 0.0 90.5 135.7#  
 89 0.0 36.9 55.3#

