

Data Path : Z:\voasrv\HPCHEM1\MSVOA_X\Data\VX083023\
 Data File : VX037423.D
 Acq On : 31 Aug 2023 11:52
 Operator : JC/MD
 Sample : 04128-18
 Misc : 5.0mL/MSVOA_X/WATER
 ALS Vial : 55 Sample Multiplier: 1

Instrument :
 MSVOA_X
 ClientSampleId :

Quant Time: Aug 31 18:24:17 2023
 Quant Method : Z:\voasrv\HPCHEM1\MSVOA_X\Method\82X081723W.M
 Quant Title : SW846 8260
 QLast Update : Fri Aug 18 09:30:38 2023
 Response via : Initial Calibration

Compound	R.T.	QIon	Response	Conc	Units	Dev(Min)

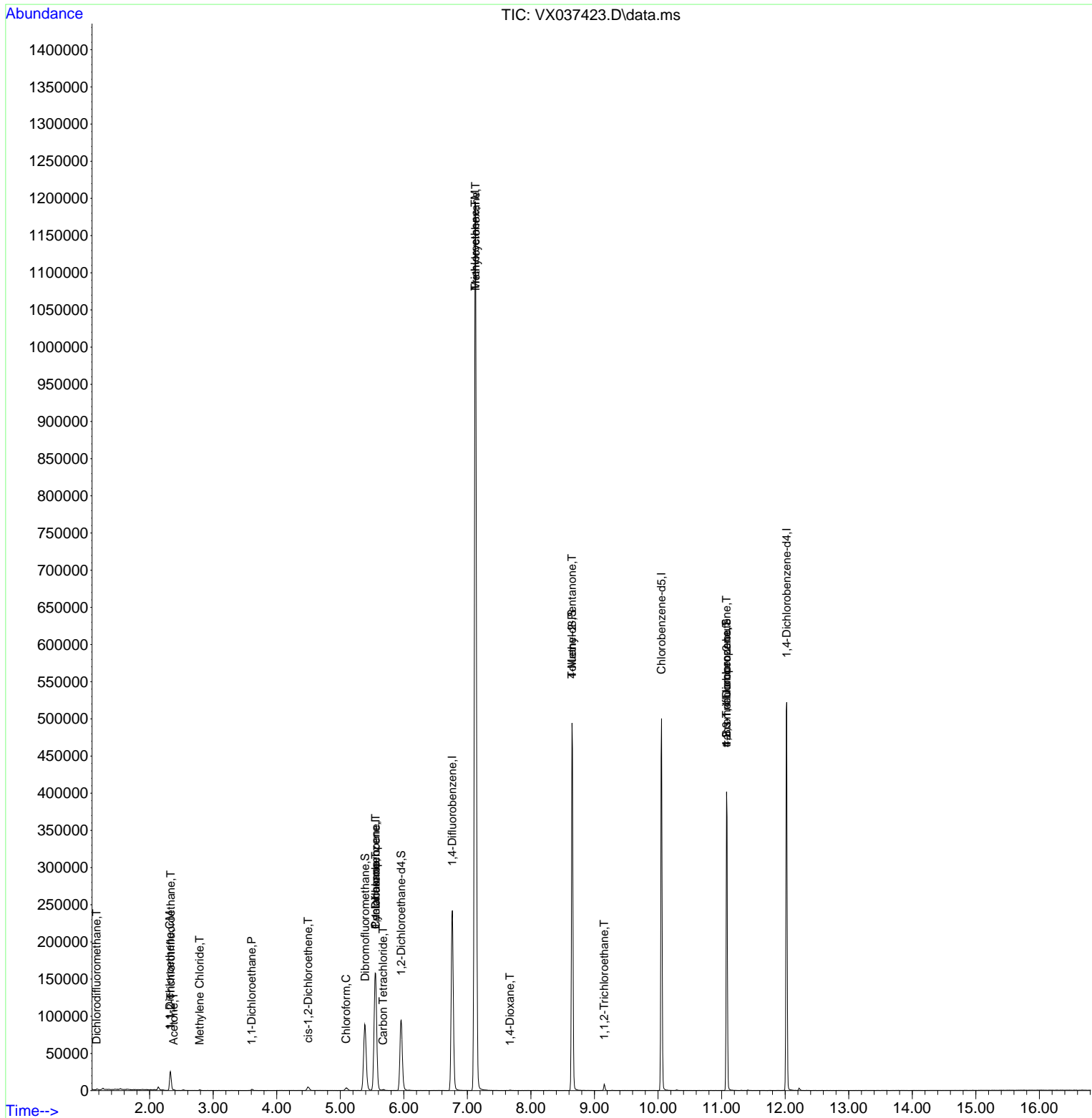
Internal Standards						
1) Pentafluorobenzene	5.556	168	151799	50.000	ug/l	0.00
34) 1,4-Difluorobenzene	6.763	114	256193	50.000	ug/l	0.00
63) Chlorobenzene-d5	10.055	117	233755	50.000	ug/l	0.00
72) 1,4-Dichlorobenzene-d4	12.024	152	113923	50.000	ug/l	0.00
System Monitoring Compounds						
33) 1,2-Dichloroethane-d4	5.958	65	95523	43.649	ug/l	0.00
Spiked Amount	50.000	Range	78 - 117	Recovery	=	87.300%
35) Dibromofluoromethane	5.391	113	78139	46.053	ug/l	0.00
Spiked Amount	50.000	Range	75 - 124	Recovery	=	92.100%
50) Toluene-d8	8.647	98	301437	48.978	ug/l	0.00
Spiked Amount	50.000	Range	92 - 112	Recovery	=	97.960%
62) 4-Bromofluorobenzene	11.079	95	116058	47.984	ug/l	0.00
Spiked Amount	50.000	Range	83 - 123	Recovery	=	95.960%
Target Compounds						
						Qvalue
2) Dichlorodifluoromethane	1.166	85	654	0.371	ug/l	90
9) 1,1,2-Trichlorotrifluo...	2.331	101	6201	3.864	ug/l	99
12) 1,1-Dichloroethene	2.319	96	4322	2.766	ug/l	86
16) Acetone	2.380	43	1182	1.381	ug/l	95
20) Methylene Chloride	2.788	84	462	0.241	ug/l #	80
24) 1,1-Dichloroethane	3.605	63	1937	0.622	ug/l #	94
27) cis-1,2-Dichloroethene	4.495	96	3356	1.603	ug/l	79
30) Chloroform	5.092	83	4654	1.332	ug/l	93
31) Cyclohexane	5.556	56	3116	1.266	ug/l #	1
36) 1,1-Dichloropropene	5.556	75	11590	4.808	ug/l #	51
38) Carbon Tetrachloride	5.672	117	1069	0.408	ug/l #	83
39) Methylcyclohexane	7.129	83	5421	2.140	ug/l #	1
44) Trichloroethene	7.123	130	484137	246.964	ug/l	98
49) 1,4-Dioxane	7.671	88	489	9.524	ug/l #	97
51) 4-Methyl-2-Pentanone	8.647	43	1101	0.464	ug/l #	1
55) 1,1,2-Trichloroethane	9.153	97	2328	1.252	ug/l	95
76) 1,2,3-Trichloropropane	11.079	75	57031	23.506	ug/l #	39
81) trans-1,4-Dichloro-2-b...	11.079	75	57031	65.655	ug/l #	5

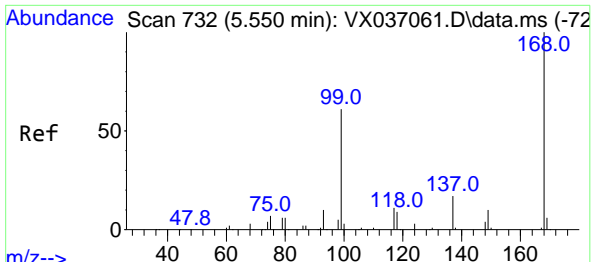
(#) = qualifier out of range (m) = manual integration (+) = signals summed

Data Path : Z:\voasrv\HPCHEM1\MSVOA_X\Data\VX083023\
 Data File : VX037423.D
 Acq On : 31 Aug 2023 11:52
 Operator : JC/MD
 Sample : 04128-18
 Misc : 5.0mL/MSVOA_X/WATER
 ALS Vial : 55 Sample Multiplier: 1

Instrument :
 MSVOA_X
 ClientSampleId :

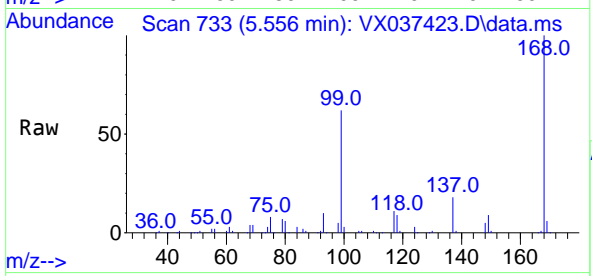
Quant Time: Aug 31 18:24:17 2023
 Quant Method : Z:\voasrv\HPCHEM1\MSVOA_X\Method\82X081723W.M
 Quant Title : SW846 8260
 QLast Update : Fri Aug 18 09:30:38 2023
 Response via : Initial Calibration



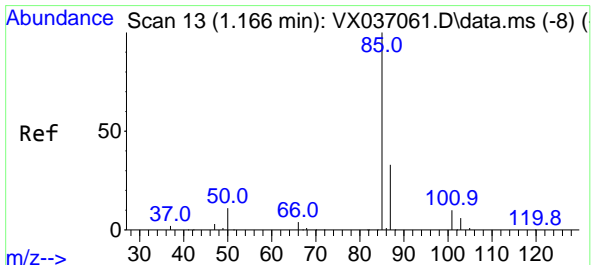
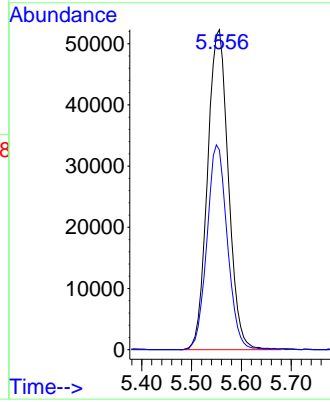
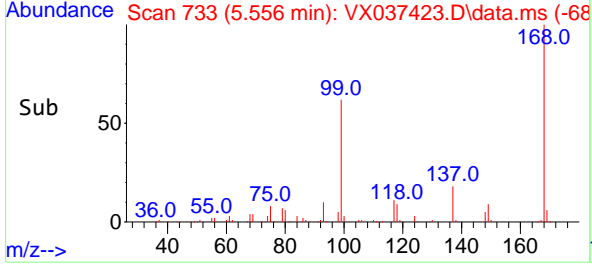


#1
 Pentafluorobenzene
 Concen: 50.000 ug/l
 RT: 5.556 min Scan# 71
 Delta R.T. 0.006 min
 Lab File: VX037423.D
 Acq: 31 Aug 2023 11:52

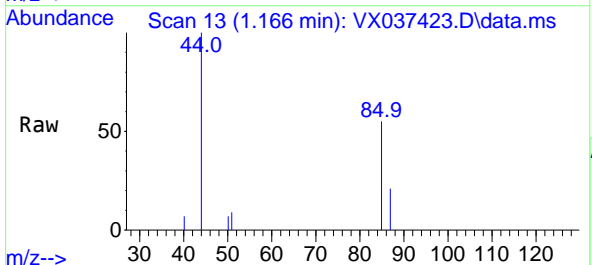
Instrument :
 MSVOA_X
 ClientSampleId :



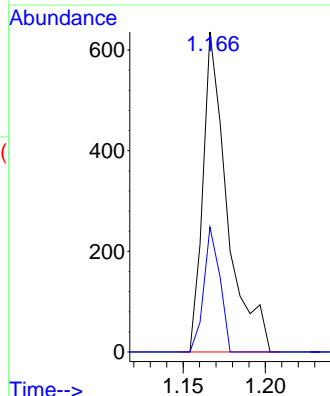
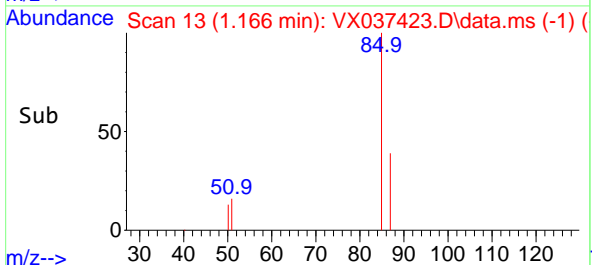
Tgt Ion:168 Resp: 151799
 Ion Ratio Lower Upper
 168 100
 99 62.4 56.6 85.0

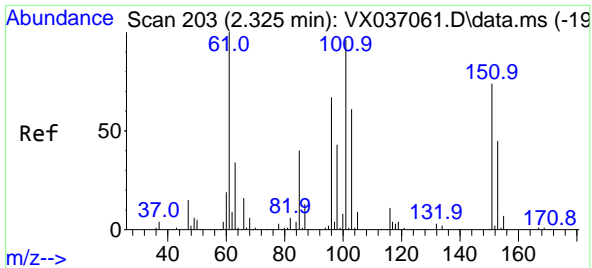


#2
 Dichlorodifluoromethane
 Concen: 0.371 ug/l
 RT: 1.166 min Scan# 13
 Delta R.T. -0.000 min
 Lab File: VX037423.D
 Acq: 31 Aug 2023 11:52



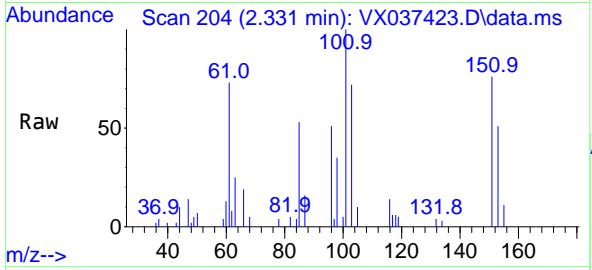
Tgt Ion: 85 Resp: 654
 Ion Ratio Lower Upper
 85 100
 87 39.0 16.7 50.1



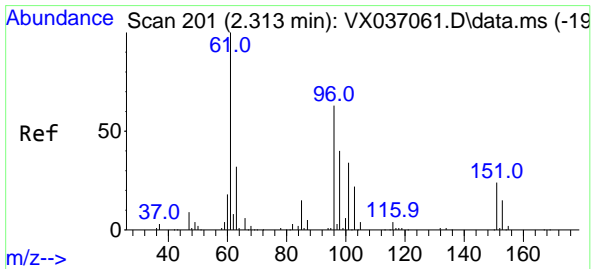
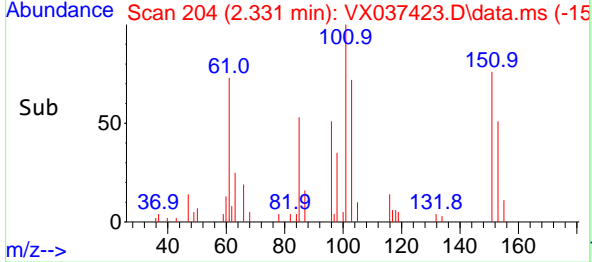
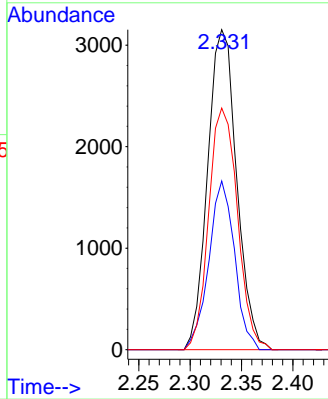


#9
 1,1,2-Trichlorotrifluoroethane
 Concen: 3.864 ug/l
 RT: 2.331 min Scan# 201
 Delta R.T. 0.006 min
 Lab File: VX037423.D
 Acq: 31 Aug 2023 11:52

Instrument :
 MSVOA_X
 ClientSampleId :

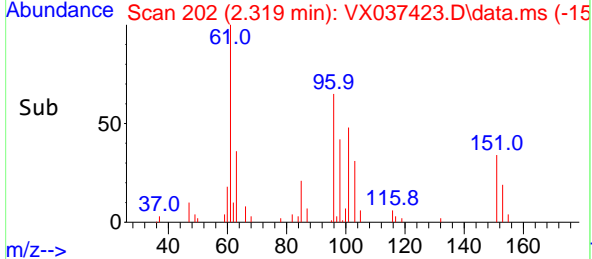
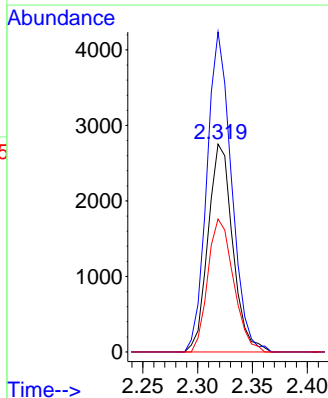
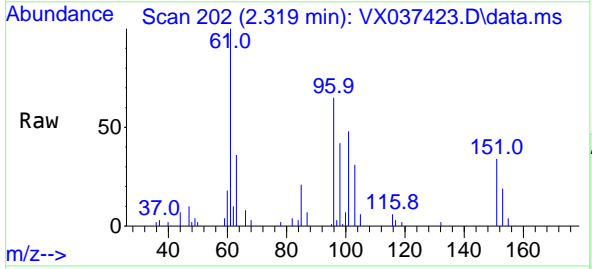


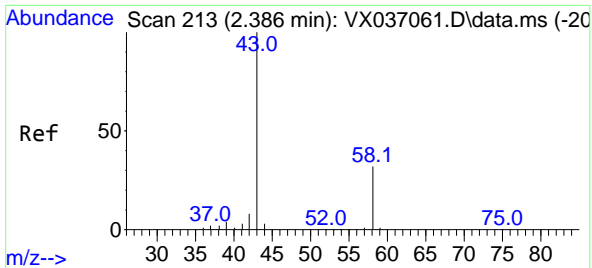
Tgt Ion:101 Resp: 6201
 Ion Ratio Lower Upper
 101 100
 85 46.7 37.0 55.6
 151 74.7 58.6 87.8



#12
 1,1-Dichloroethene
 Concen: 2.766 ug/l
 RT: 2.319 min Scan# 202
 Delta R.T. 0.006 min
 Lab File: VX037423.D
 Acq: 31 Aug 2023 11:52

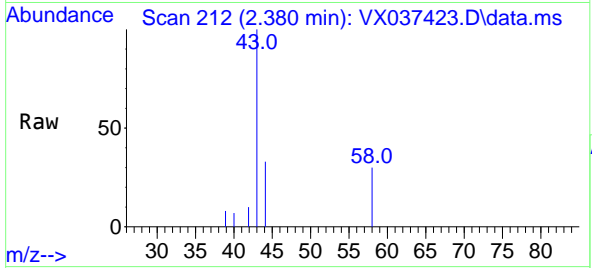
Tgt Ion: 96 Resp: 4322
 Ion Ratio Lower Upper
 96 100
 61 154.0 144.6 216.8
 98 64.0 50.4 75.6



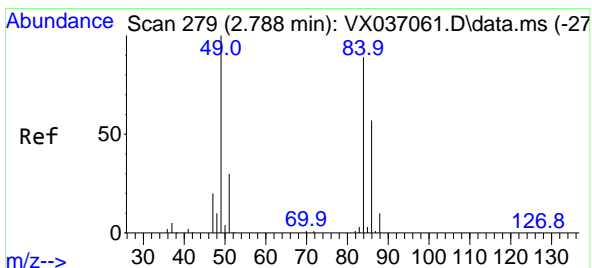
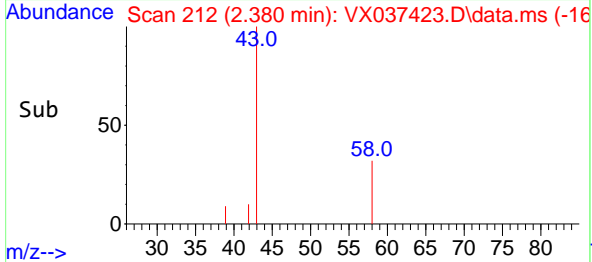
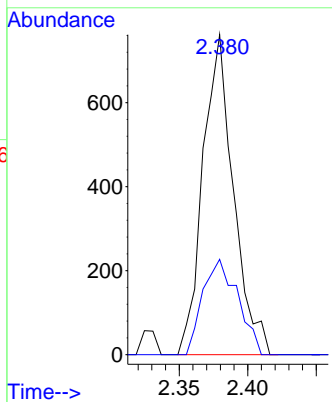


#16
 Acetone
 Concen: 1.381 ug/l
 RT: 2.380 min Scan# 213
 Delta R.T. -0.006 min
 Lab File: VX037423.D
 Acq: 31 Aug 2023 11:52

Instrument : MSVOA_X
 ClientSampleId :

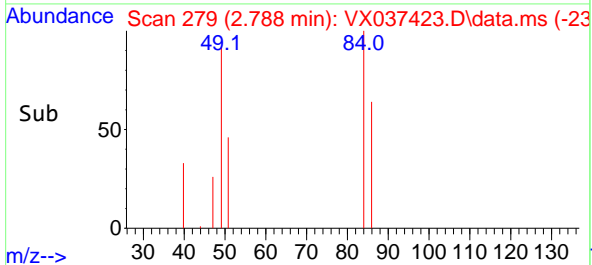
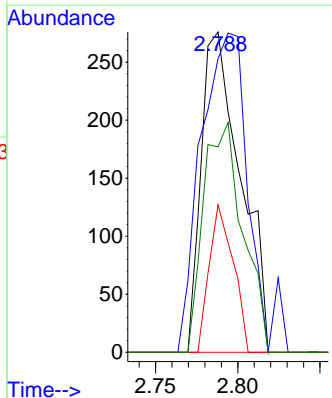
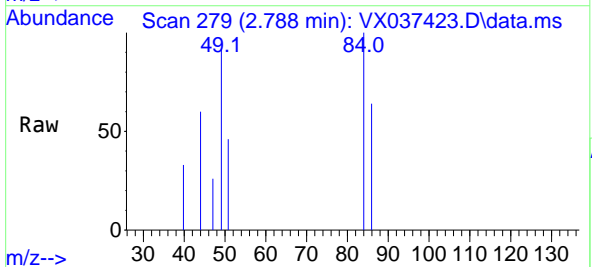


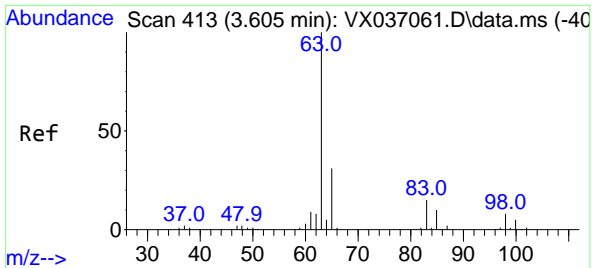
Tgt Ion: 43 Resp: 1182
 Ion Ratio Lower Upper
 43 100
 58 29.8 21.9 32.9



#20
 Methylene Chloride
 Concen: 0.241 ug/l
 RT: 2.788 min Scan# 279
 Delta R.T. -0.000 min
 Lab File: VX037423.D
 Acq: 31 Aug 2023 11:52

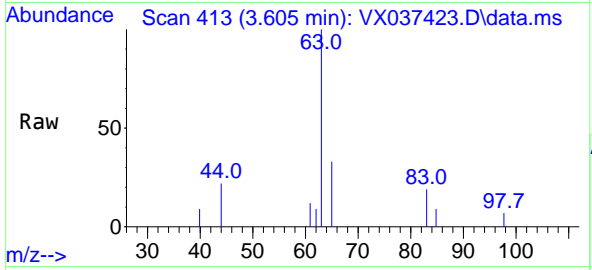
Tgt Ion: 84 Resp: 462
 Ion Ratio Lower Upper
 84 100
 49 91.7 103.6 155.4#
 51 46.0 33.8 50.6
 86 64.1 49.4 74.0



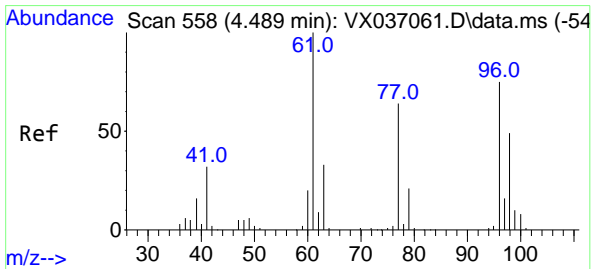
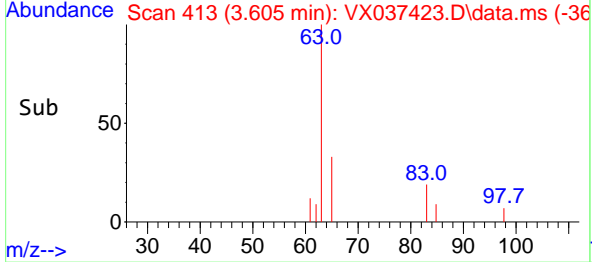
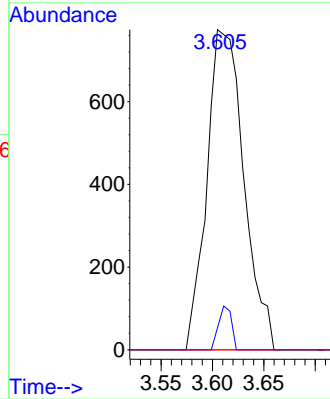


#24
 1,1-Dichloroethane
 Concen: 0.622 ug/l
 RT: 3.605 min Scan# 413
 Delta R.T. -0.000 min
 Lab File: VX037423.D
 Acq: 31 Aug 2023 11:52

Instrument : MSVOA_X
 ClientSampleId :

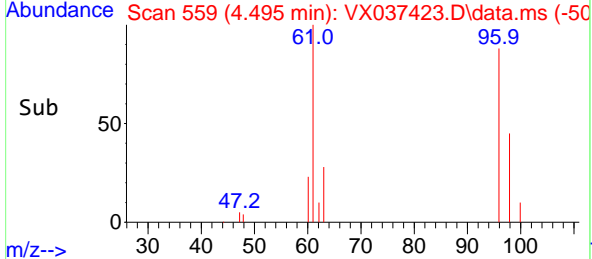
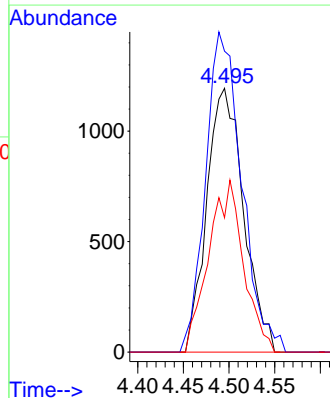
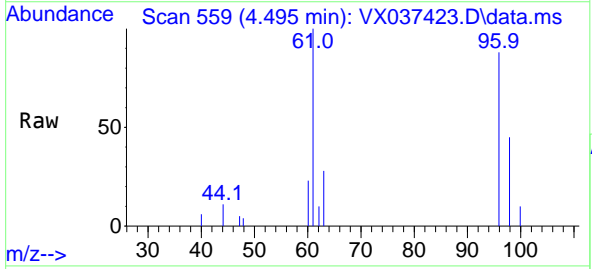


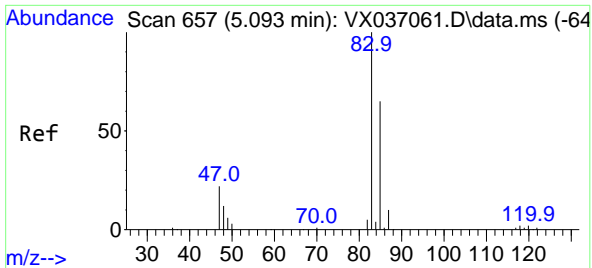
Tgt Ion: 63 Resp: 1937
 Ion Ratio Lower Upper
 63 100
 98 6.8 3.3 9.8
 100 0.0 2.1 6.5#



#27
 cis-1,2-Dichloroethene
 Concen: 1.603 ug/l
 RT: 4.495 min Scan# 559
 Delta R.T. 0.006 min
 Lab File: VX037423.D
 Acq: 31 Aug 2023 11:52

Tgt Ion: 96 Resp: 3356
 Ion Ratio Lower Upper
 96 100
 61 118.9 0.0 312.2
 98 61.4 0.0 129.0



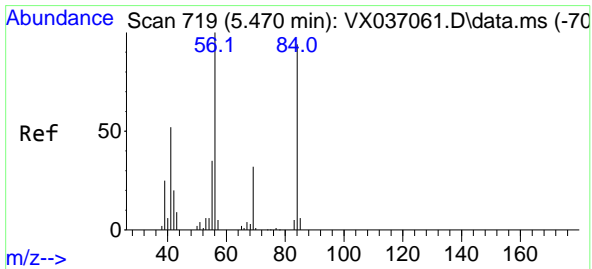
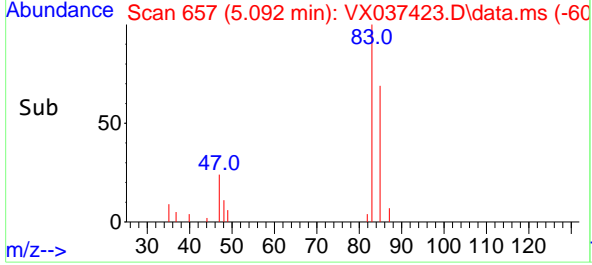
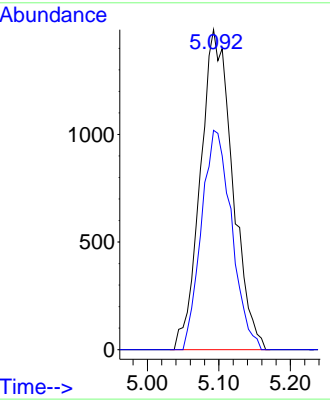
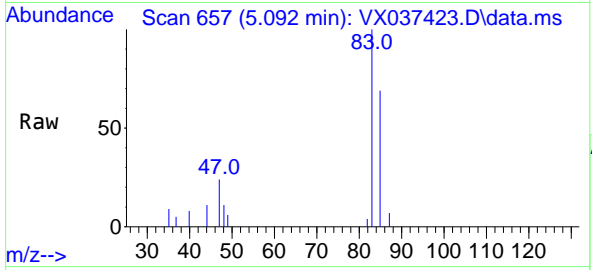


#30
 Chloroform
 Concen: 1.332 ug/l
 RT: 5.092 min Scan# 61
 Delta R.T. -0.000 min
 Lab File: VX037423.D
 Acq: 31 Aug 2023 11:52

Instrument : MSVOA_X
 ClientSampleId :

Tgt Ion: 83 Resp: 4654

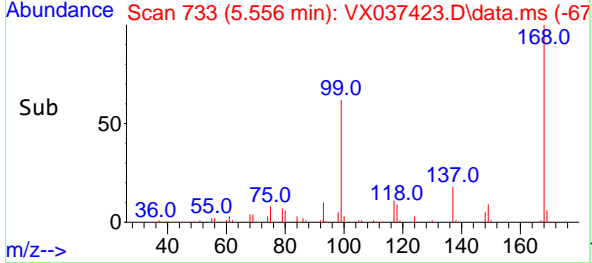
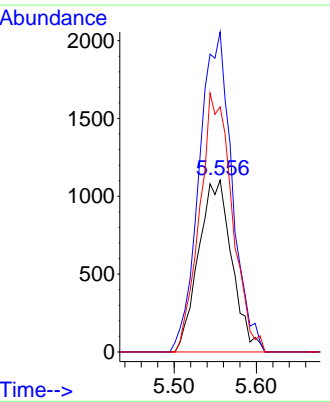
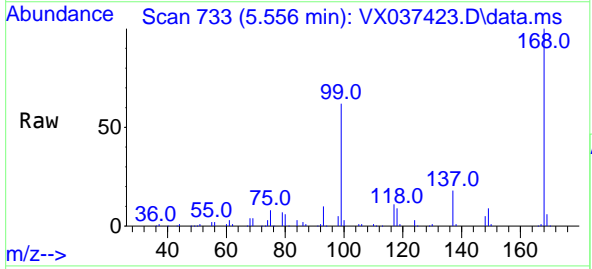
Ion	Ratio	Lower	Upper
83	100		
85	68.5	50.3	75.5

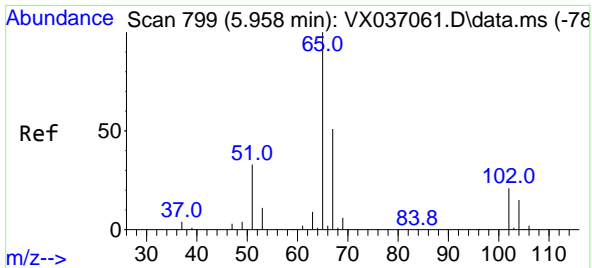


#31
 Cyclohexane
 Concen: 1.266 ug/l
 RT: 5.556 min Scan# 733
 Delta R.T. 0.085 min
 Lab File: VX037423.D
 Acq: 31 Aug 2023 11:52

Tgt Ion: 56 Resp: 3116

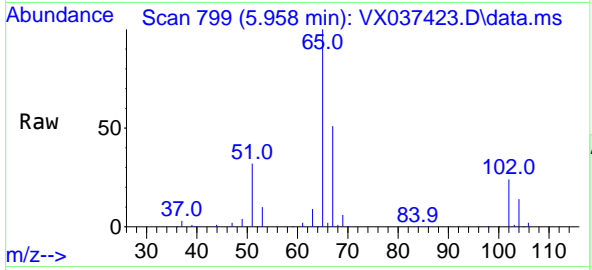
Ion	Ratio	Lower	Upper
56	100		
69	186.2	23.4	35.2#
84	142.7	65.9	98.9#



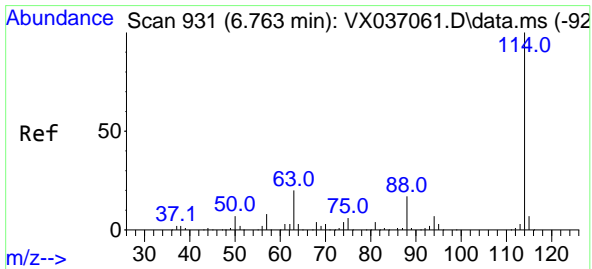
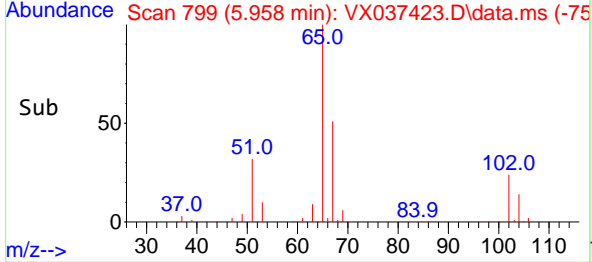
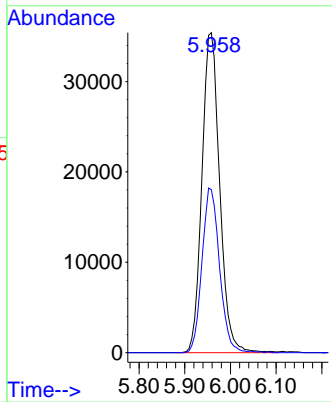


#33
 1,2-Dichloroethane-d4
 Concen: 43.649 ug/l
 RT: 5.958 min Scan# 799
 Delta R.T. -0.000 min
 Lab File: VX037423.D
 Acq: 31 Aug 2023 11:52

Instrument : MSVOA_X
 ClientSampleId :

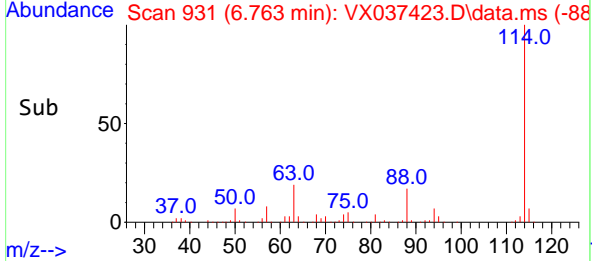
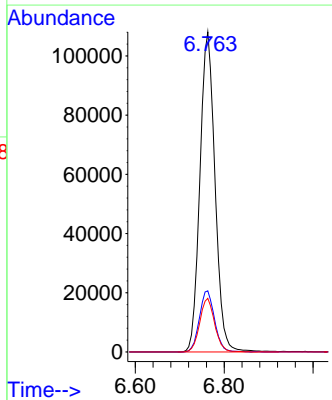
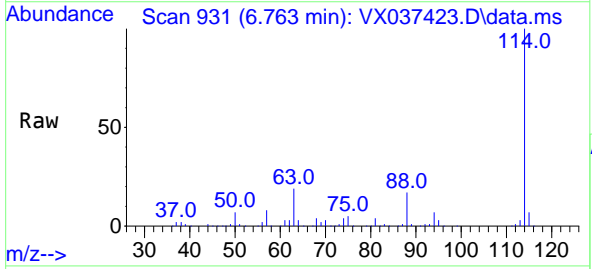


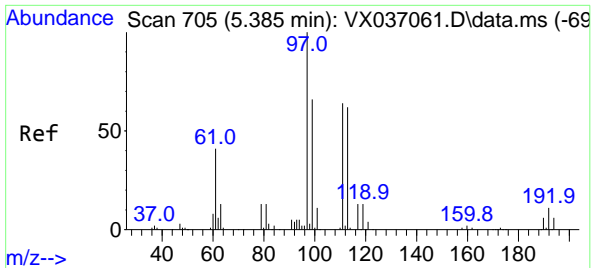
Tgt Ion: 65 Resp: 95523
 Ion Ratio Lower Upper
 65 100
 67 51.0 0.0 100.2



#34
 1,4-Difluorobenzene
 Concen: 50.000 ug/l
 RT: 6.763 min Scan# 931
 Delta R.T. -0.000 min
 Lab File: VX037423.D
 Acq: 31 Aug 2023 11:52

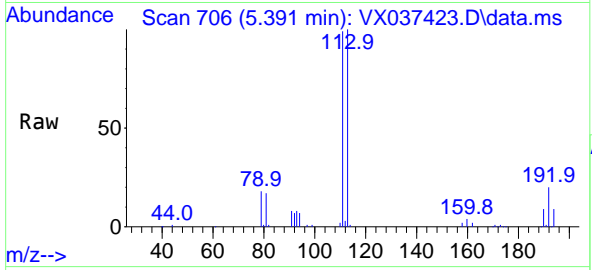
Tgt Ion: 114 Resp: 256193
 Ion Ratio Lower Upper
 114 100
 63 19.1 0.0 45.0
 88 16.8 0.0 36.6



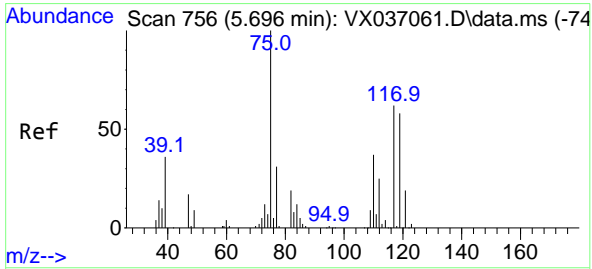
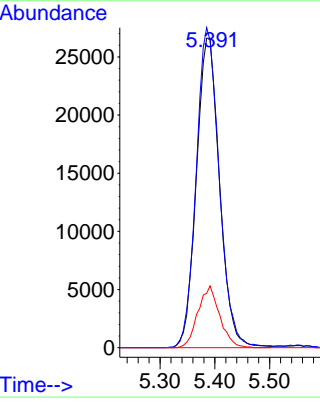
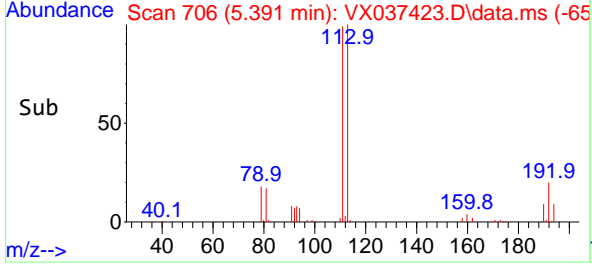


#35
 Dibromofluoromethane
 Concen: 46.053 ug/l
 RT: 5.391 min Scan# 705
 Delta R.T. 0.006 min
 Lab File: VX037423.D
 Acq: 31 Aug 2023 11:52

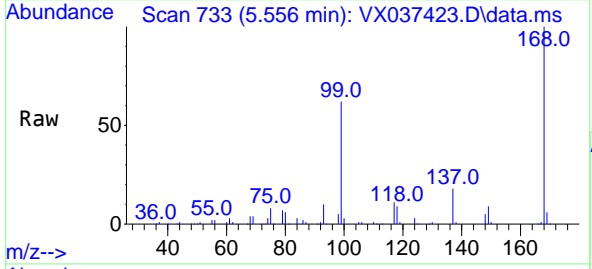
Instrument : MSVOA_X
 ClientSampleId :



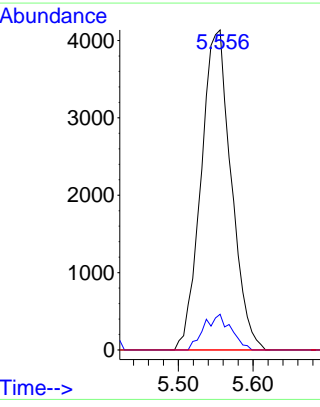
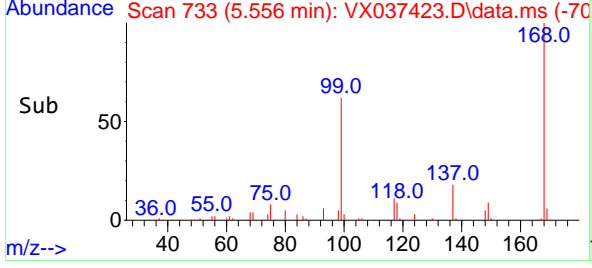
Tgt Ion: 113 Resp: 78139
 Ion Ratio Lower Upper
 113 100
 111 103.0 82.9 124.3
 192 18.6 13.3 19.9

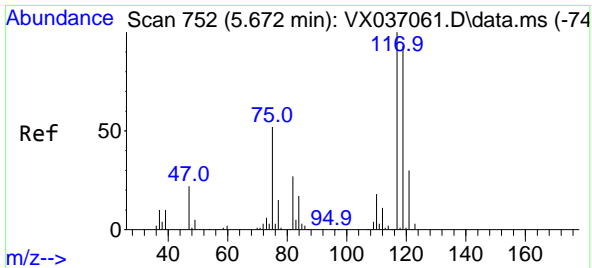


#36
 1,1-Dichloropropene
 Concen: 4.808 ug/l
 RT: 5.556 min Scan# 733
 Delta R.T. -0.140 min
 Lab File: VX037423.D
 Acq: 31 Aug 2023 11:52



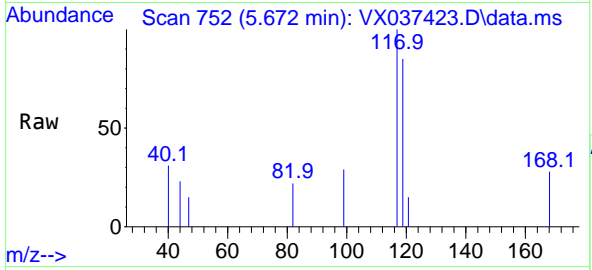
Tgt Ion: 75 Resp: 11590
 Ion Ratio Lower Upper
 75 100
 110 10.0 17.0 50.9#
 77 0.0 24.7 37.1#



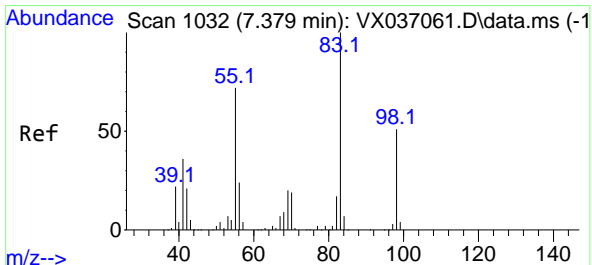
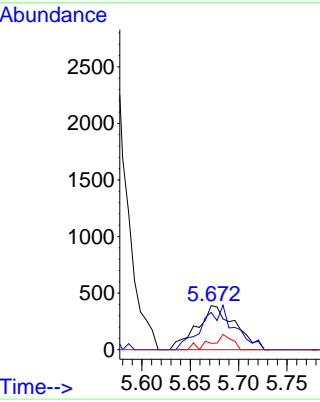
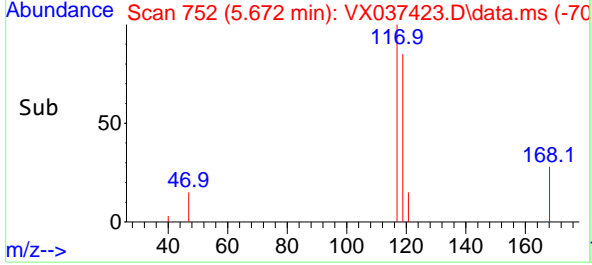


#38
 Carbon Tetrachloride
 Concen: 0.408 ug/l
 RT: 5.672 min Scan# 711
 Delta R.T. -0.000 min
 Lab File: VX037423.D
 Acq: 31 Aug 2023 11:52

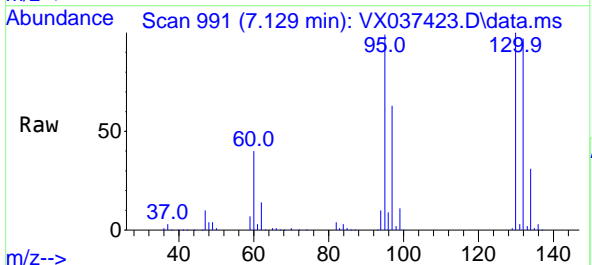
Instrument : MSVOA_X
 ClientSampleId :



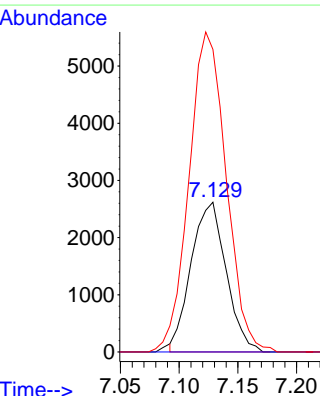
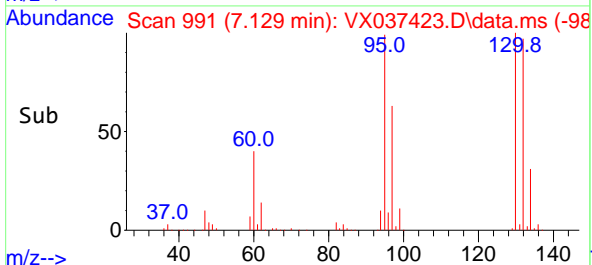
Tgt Ion:117 Resp: 1069
 Ion Ratio Lower Upper
 117 100
 119 84.8 78.2 117.2
 121 14.7 24.4 36.6#

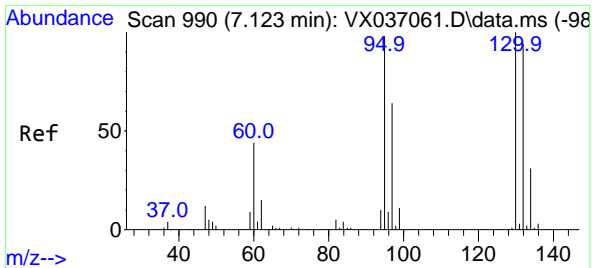


#39
 Methylcyclohexane
 Concen: 2.140 ug/l
 RT: 7.129 min Scan# 991
 Delta R.T. -0.250 min
 Lab File: VX037423.D
 Acq: 31 Aug 2023 11:52



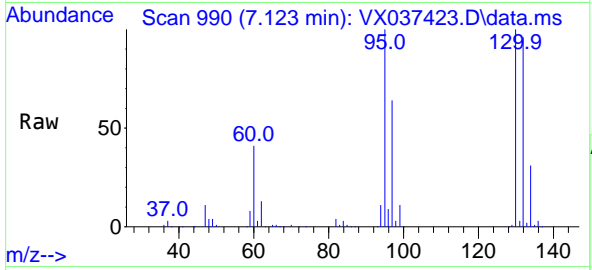
Tgt Ion: 83 Resp: 5421
 Ion Ratio Lower Upper
 83 100
 55 0.0 64.6 97.0#
 98 199.0 36.7 55.1#



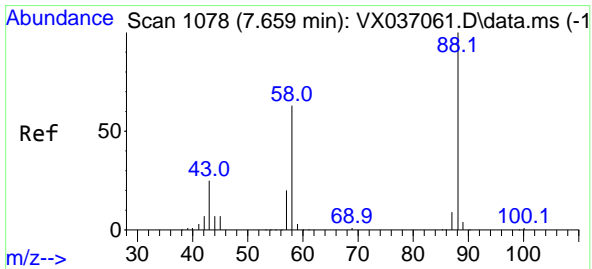
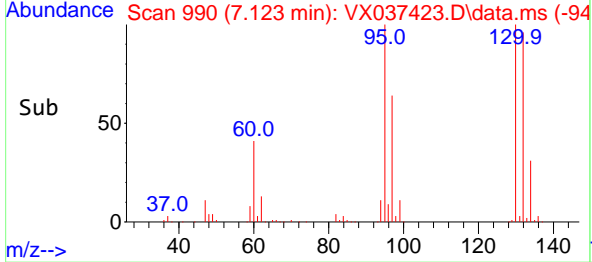
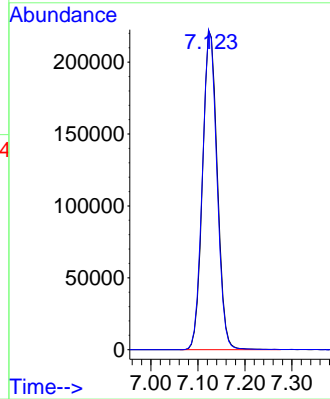


#44
 Trichloroethene
 Concen: 246.964 ug/l
 RT: 7.123 min Scan# 990
 Delta R.T. -0.000 min
 Lab File: VX037423.D
 Acq: 31 Aug 2023 11:52

Instrument : MSVOA_X
 ClientSampleId :

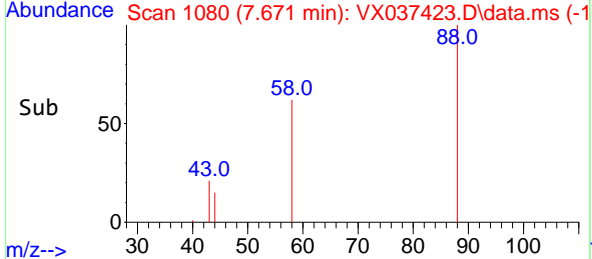
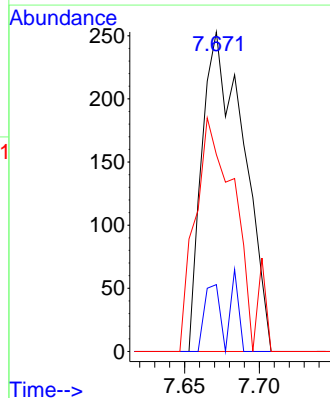
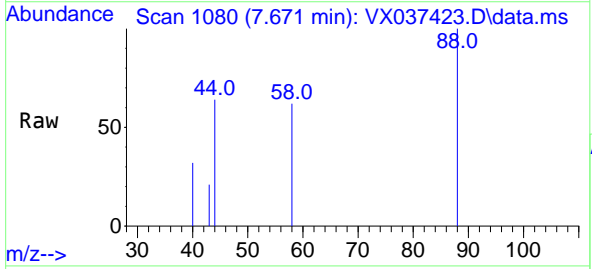


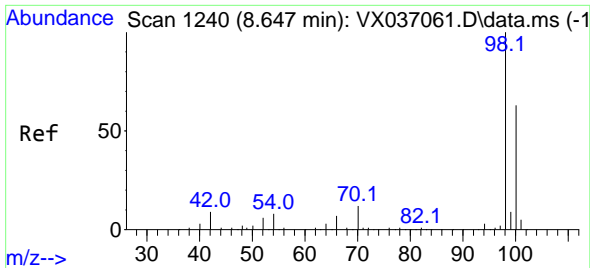
Tgt Ion:130 Resp: 484137
 Ion Ratio Lower Upper
 130 100
 95 100.2 0.0 204.4



#49
 1,4-Dioxane
 Concen: 9.524 ug/l
 RT: 7.671 min Scan# 1080
 Delta R.T. 0.012 min
 Lab File: VX037423.D
 Acq: 31 Aug 2023 11:52

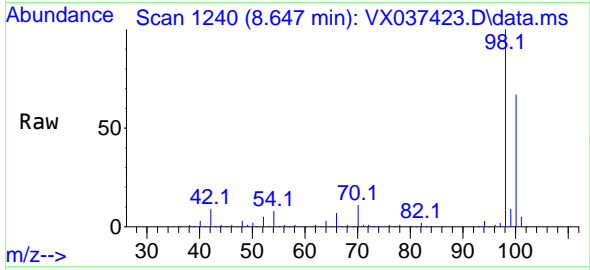
Tgt Ion: 88 Resp: 489
 Ion Ratio Lower Upper
 88 100
 43 7.8 0.0 0.0#
 58 72.6 60.1 90.1



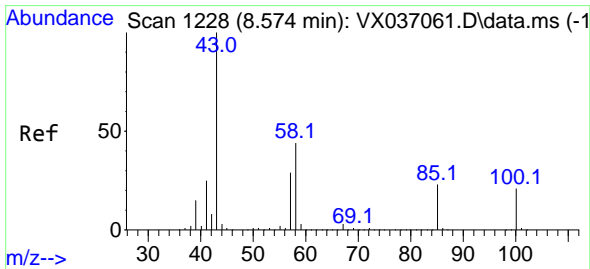
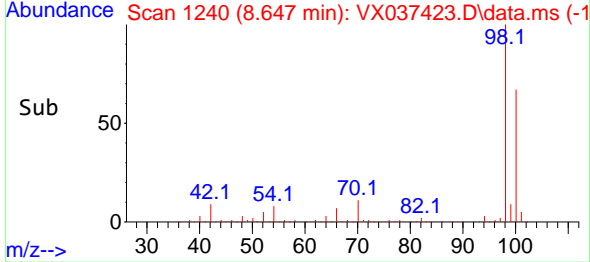
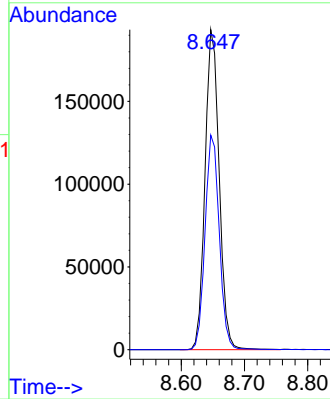


#50
 Toluene-d8
 Concen: 48.978 ug/l
 RT: 8.647 min Scan# 11
 Delta R.T. -0.000 min
 Lab File: VX037423.D
 Acq: 31 Aug 2023 11:52

Instrument :
 MSVOA_X
 ClientSampleId :

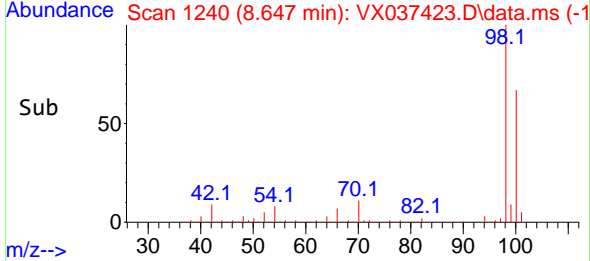
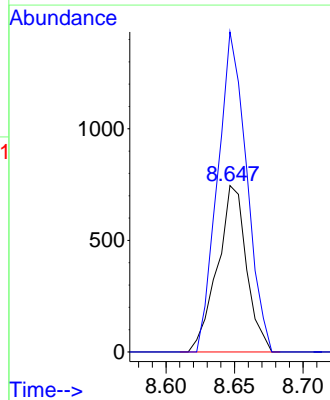
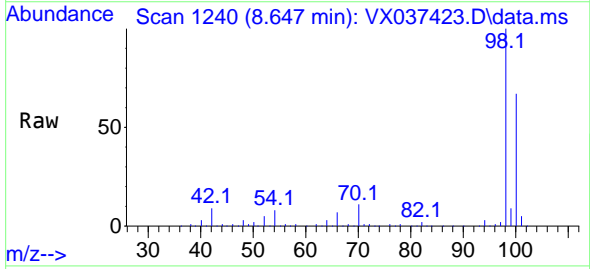


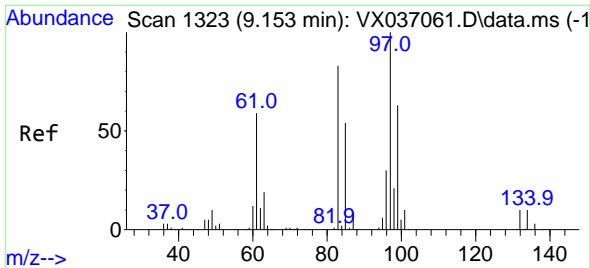
Tgt Ion: 98 Resp: 301437
 Ion Ratio Lower Upper
 98 100
 100 67.4 53.1 79.7



#51
 4-Methyl-2-Pentanone
 Concen: 0.464 ug/l
 RT: 8.647 min Scan# 1240
 Delta R.T. 0.073 min
 Lab File: VX037423.D
 Acq: 31 Aug 2023 11:52

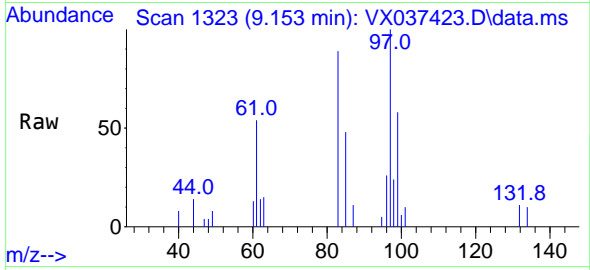
Tgt Ion: 43 Resp: 1101
 Ion Ratio Lower Upper
 43 100
 58 191.3 30.4 45.6#





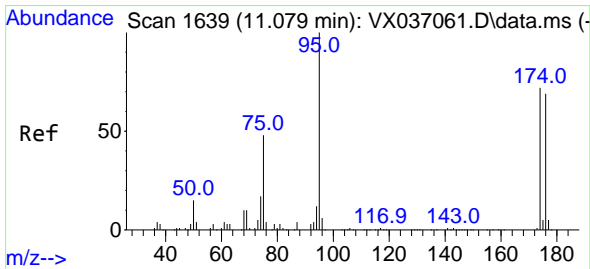
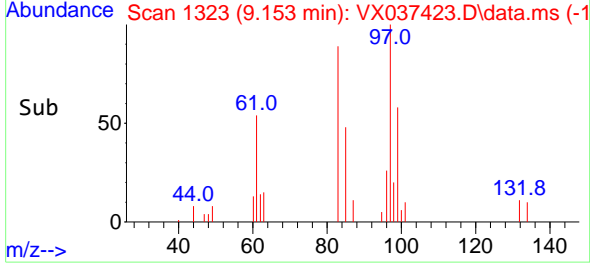
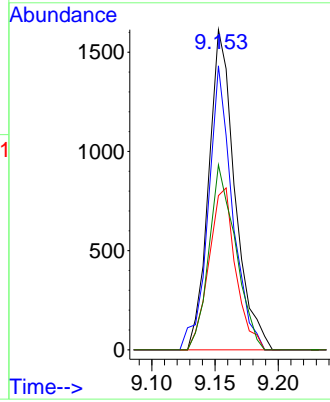
#55
 1,1,2-Trichloroethane
 Concen: 1.252 ug/l
 RT: 9.153 min Scan# 11
 Delta R.T. -0.000 min
 Lab File: VX037423.D
 Acq: 31 Aug 2023 11:52

Instrument : MSVOA_X
 ClientSampleId :

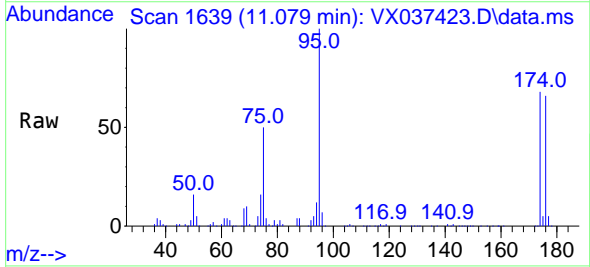


Tgt Ion: 97 Resp: 2328

Ion	Ratio	Lower	Upper
97	100		
83	88.7	65.8	98.8
85	48.1	41.6	62.4
99	57.7	47.8	71.8

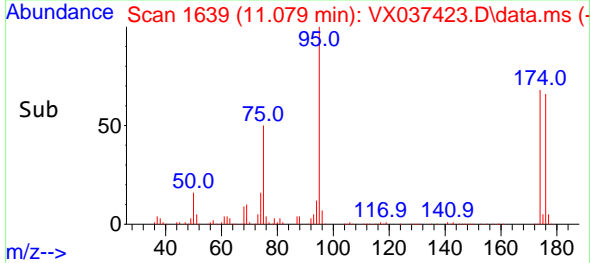
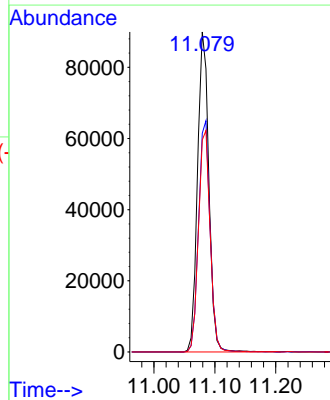


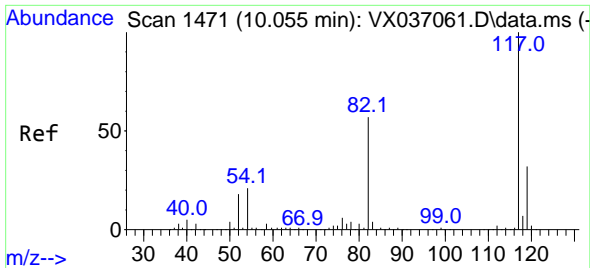
#62
 4-Bromofluorobenzene
 Concen: 47.984 ug/l
 RT: 11.079 min Scan# 1639
 Delta R.T. -0.000 min
 Lab File: VX037423.D
 Acq: 31 Aug 2023 11:52



Tgt Ion: 95 Resp: 116058

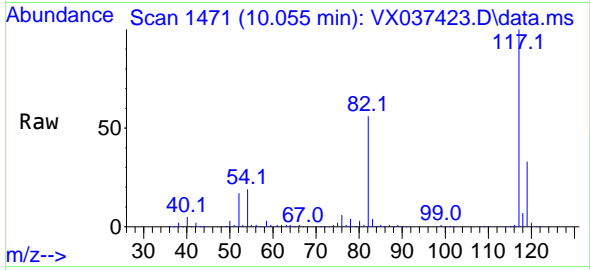
Ion	Ratio	Lower	Upper
95	100		
174	73.4	0.0	135.6
176	71.4	0.0	131.0



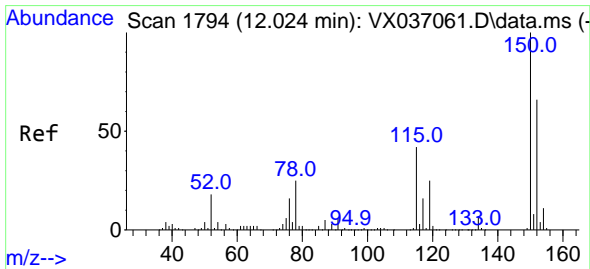
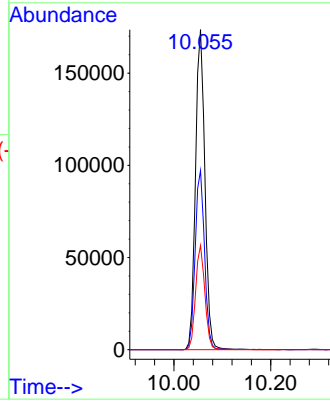
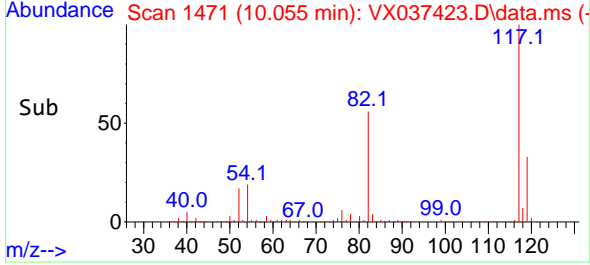


#63
 Chlorobenzene-d5
 Concen: 50.000 ug/l
 RT: 10.055 min Scan# 1471
 Delta R.T. -0.000 min
 Lab File: VX037423.D
 Acq: 31 Aug 2023 11:52

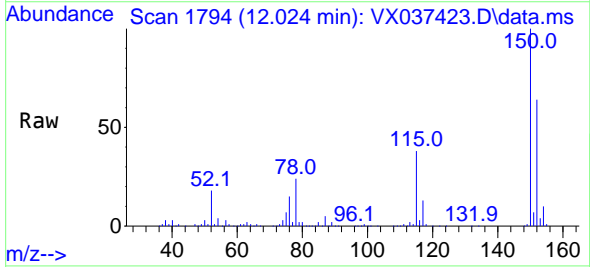
Instrument : MSVOA_X
 ClientSampleId :



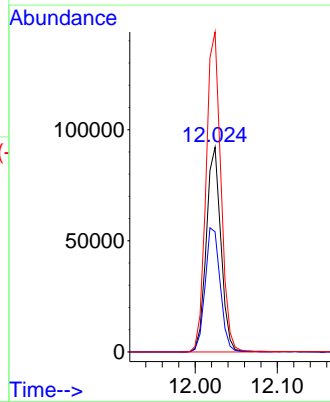
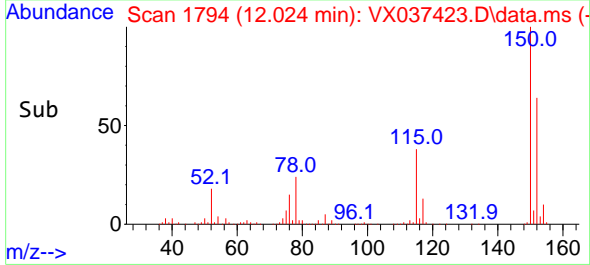
Tgt Ion:117 Resp: 233755
 Ion Ratio Lower Upper
 117 100
 82 56.0 46.2 69.4
 119 32.6 25.5 38.3

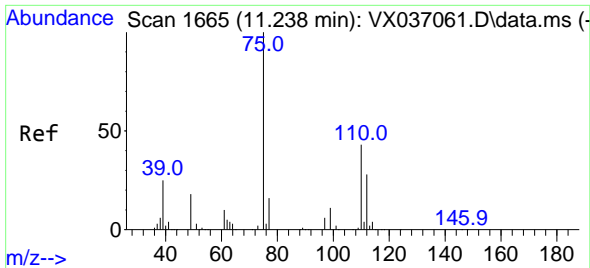


#72
 1,4-Dichlorobenzene-d4
 Concen: 50.000 ug/l
 RT: 12.024 min Scan# 1794
 Delta R.T. -0.000 min
 Lab File: VX037423.D
 Acq: 31 Aug 2023 11:52



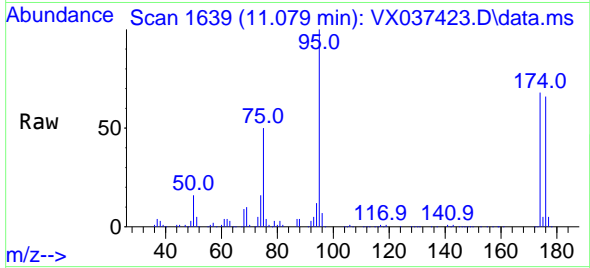
Tgt Ion:152 Resp: 113923
 Ion Ratio Lower Upper
 152 100
 115 62.7 43.3 129.9
 150 158.8 0.0 345.0



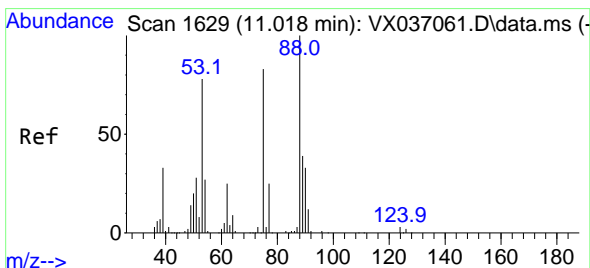
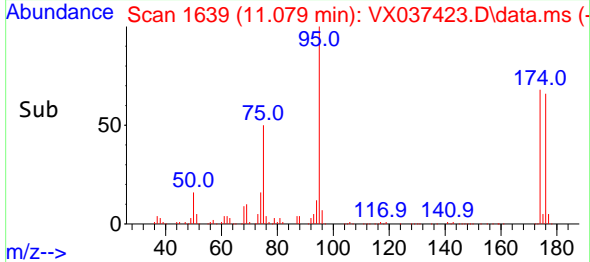
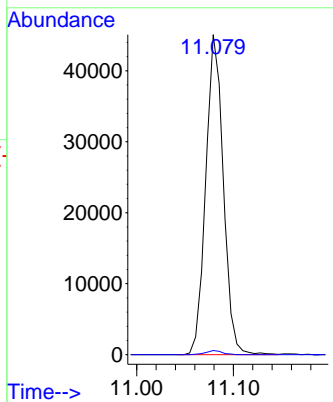


#76
 1,2,3-Trichloropropane
 Concen: 23.506 ug/l
 RT: 11.079 min Scan# 1639
 Delta R.T. -0.159 min
 Lab File: VX037423.D
 Acq: 31 Aug 2023 11:52

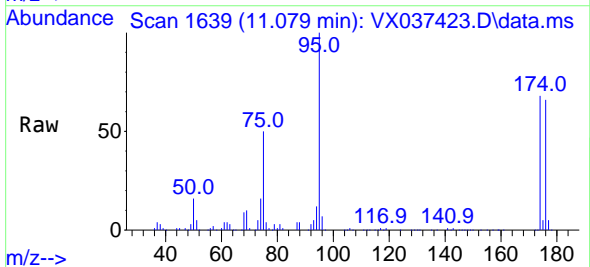
Instrument : MSVOA_X
 ClientSampleId :



Tgt Ion: 75 Resp: 57031
 Ion Ratio Lower Upper
 75 100
 77 1.2 19.1 57.5#



#81
 trans-1,4-Dichloro-2-butene
 Concen: 65.655 ug/l
 RT: 11.079 min Scan# 1639
 Delta R.T. 0.061 min
 Lab File: VX037423.D
 Acq: 31 Aug 2023 11:52



Tgt Ion: 75 Resp: 57031
 Ion Ratio Lower Upper
 75 100
 53 0.0 90.5 135.7#
 89 0.0 36.9 55.3#

