

Data Path : Z:\voasrv\HPCHEM1\MSVOA_X\Data\VX083121\
 Data File : VX024047.D
 Acq On : 31 Aug 2021 16:24
 Operator : JC/MD
 Sample : M3584-17
 Misc : 5.0mL/MSVOA_X/WATER
 ALS Vial : 20 Sample Multiplier: 1

Instrument :
 MSVOA_X
 ClientSampleId :
 TB01-20210827

Quant Time: Sep 01 05:04:03 2021
 Quant Method : Z:\voasrv\HPCHEM1\MSVOA_X\Method\82X081721W.M
 Quant Title : SW846 8260
 QLast Update : Tue Aug 17 11:57:51 2021
 Response via : Initial Calibration

Compound	R.T.	QIon	Response	Conc	Units	Dev(Min)

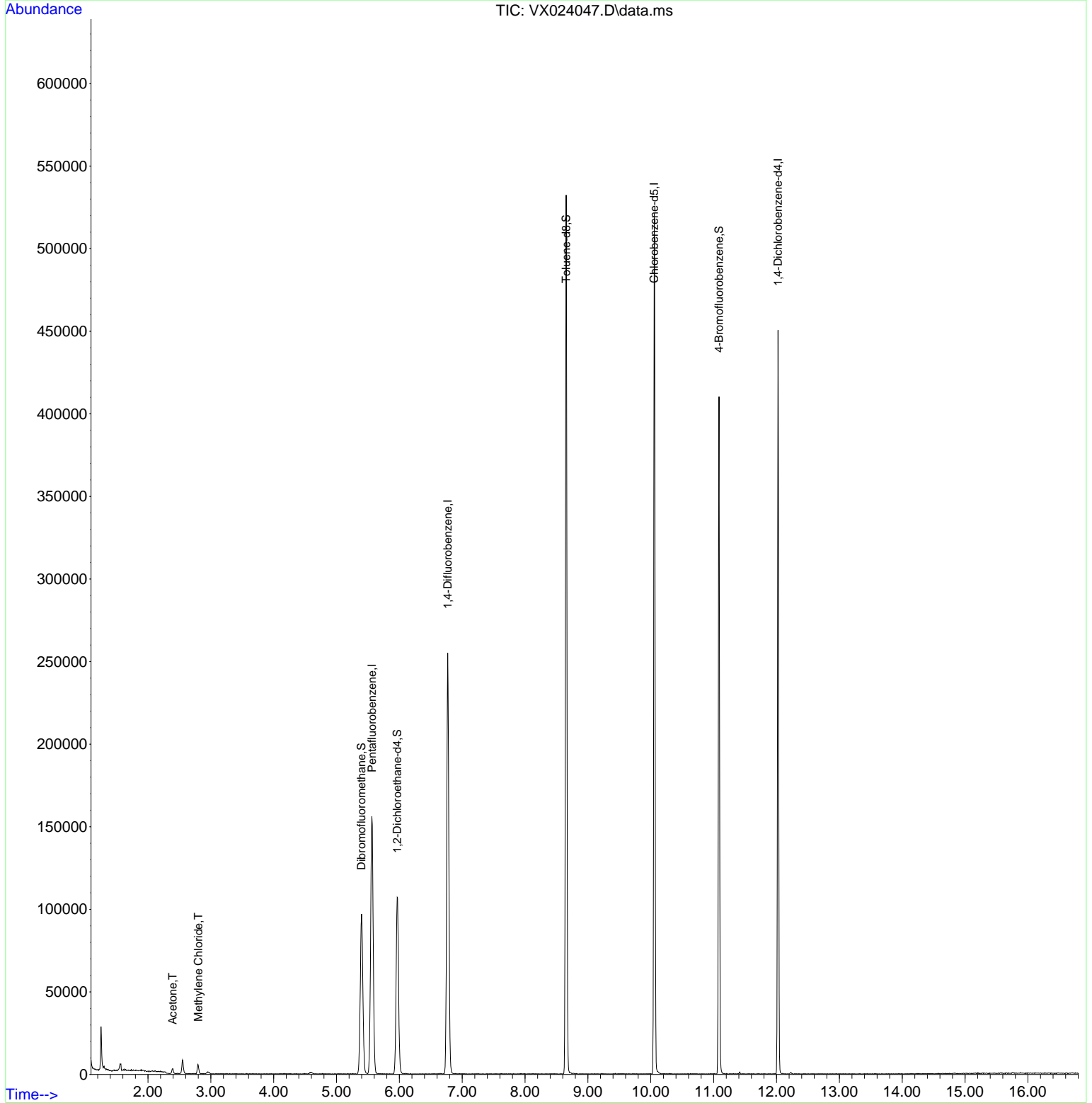
Internal Standards						
1) Pentafluorobenzene	5.562	168	141805	50.000	ug/l	0.00
34) 1,4-Difluorobenzene	6.769	114	244419	50.000	ug/l	0.00
63) Chlorobenzene-d5	10.055	117	226448	50.000	ug/l	0.00
72) 1,4-Dichlorobenzene-d4	12.024	152	85972	50.000	ug/l	0.00
System Monitoring Compounds						
33) 1,2-Dichloroethane-d4	5.964	65	107573	54.353	ug/l	0.00
Spiked Amount	50.000	Range	78 - 117	Recovery	=	108.700%
35) Dibromofluoromethane	5.397	113	82160	50.787	ug/l	0.00
Spiked Amount	50.000	Range	75 - 124	Recovery	=	101.580%
50) Toluene-d8	8.653	98	300977	48.882	ug/l	0.00
Spiked Amount	50.000	Range	92 - 112	Recovery	=	97.760%
62) 4-Bromofluorobenzene	11.085	95	102996	45.440	ug/l	0.00
Spiked Amount	50.000	Range	83 - 123	Recovery	=	90.880%
Target Compounds						
					Qvalue	
16) Acetone	2.392	43	3169	3.581	ug/l	97
20) Methylene Chloride	2.800	84	2277	1.347	ug/l	96

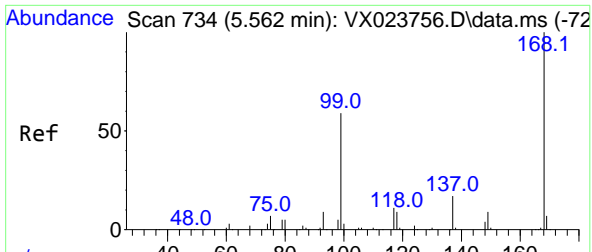
(#) = qualifier out of range (m) = manual integration (+) = signals summed

Data Path : Z:\voasrv\HPCHEM1\MSVOA_X\Data\VX083121\
 Data File : VX024047.D
 Acq On : 31 Aug 2021 16:24
 Operator : JC/MD
 Sample : M3584-17
 Misc : 5.0mL/MSVOA_X/WATER
 ALS Vial : 20 Sample Multiplier: 1

Instrument :
 MSVOA_X
Client Sampled :
 TB01-20210827

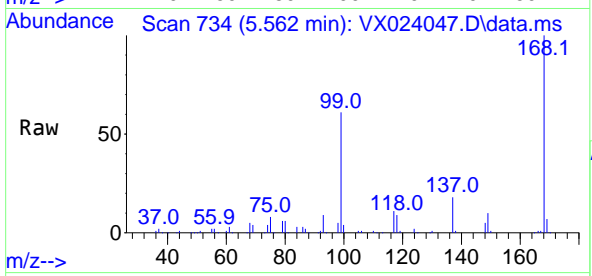
Quant Time: Sep 01 05:04:03 2021
 Quant Method : Z:\voasrv\HPCHEM1\MSVOA_X\Method\82X081721W.M
 Quant Title : SW846 8260
 QLast Update : Tue Aug 17 11:57:51 2021
 Response via : Initial Calibration



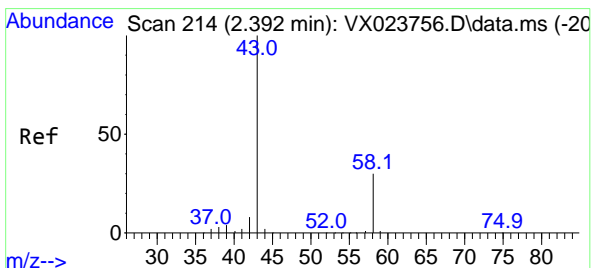
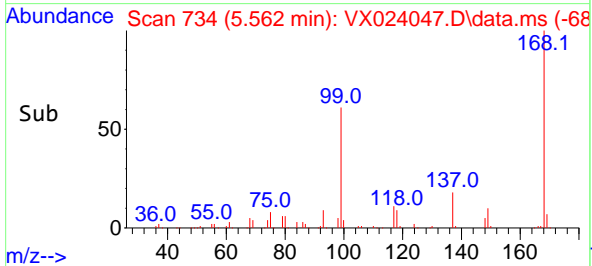
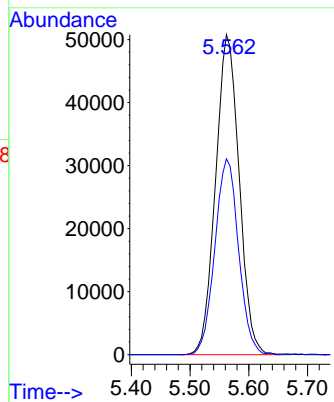


#1
 Pentafluorobenzene
 Concen: 50.000 ug/l
 RT: 5.562 min Scan# 734
 Delta R.T. -0.000 min
 Lab File: VX024047.D
 Acq: 31 Aug 2021 16:24

Instrument : MSVOA_X
 ClientSampled : TB01-20210827

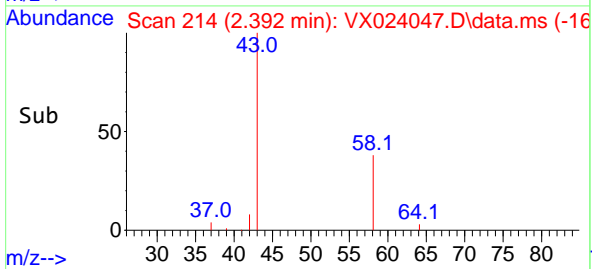
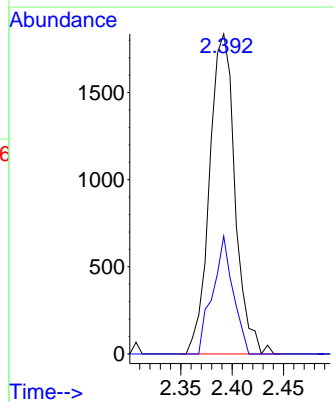
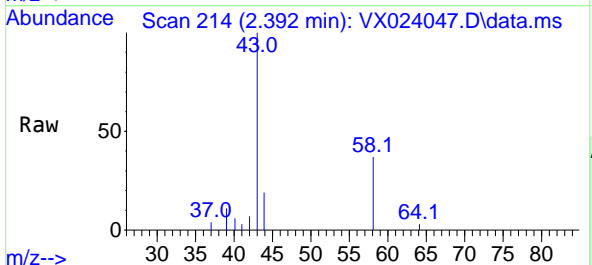


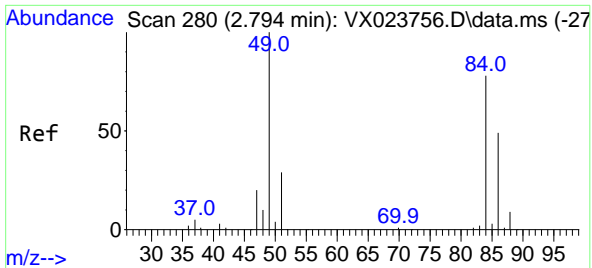
Tgt Ion:168 Resp: 141805
 Ion Ratio Lower Upper
 168 100
 99 61.2 45.8 68.6



#16
 Acetone
 Concen: 3.581 ug/l
 RT: 2.392 min Scan# 214
 Delta R.T. -0.000 min
 Lab File: VX024047.D
 Acq: 31 Aug 2021 16:24

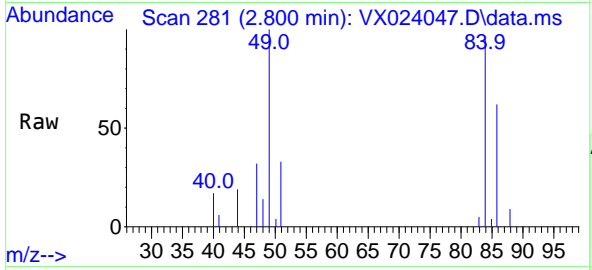
Tgt Ion: 43 Resp: 3169
 Ion Ratio Lower Upper
 43 100
 58 36.8 27.8 41.8





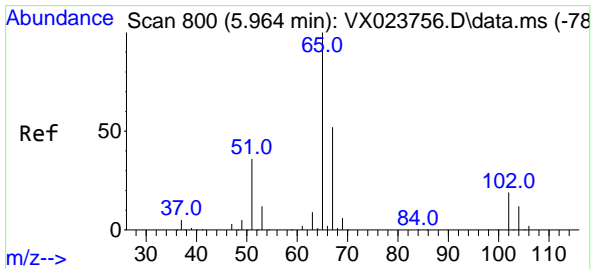
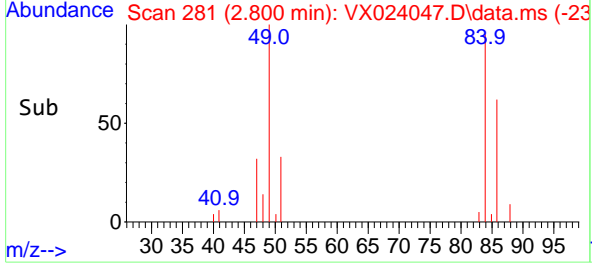
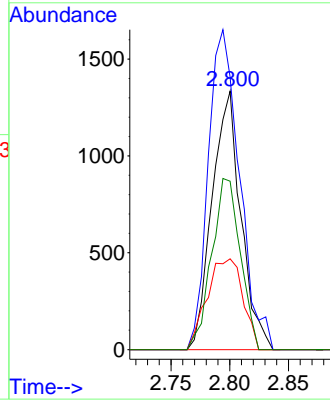
#20
Methylene Chloride
Concen: 1.347 ug/l
RT: 2.800 min Scan# 281
Delta R.T. 0.006 min
Lab File: VX024047.D
Acq: 31 Aug 2021 16:24

Instrument :
MSVOA_X
ClientSampled :
TB01-20210827

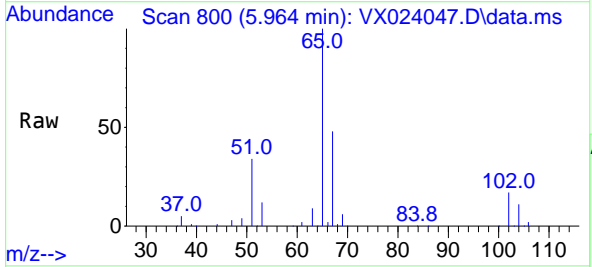


Tgt Ion: 84 Resp: 2277

Ion	Ratio	Lower	Upper
84	100		
49	105.4	88.6	132.8
51	35.1	27.0	40.6
86	65.2	50.3	75.5

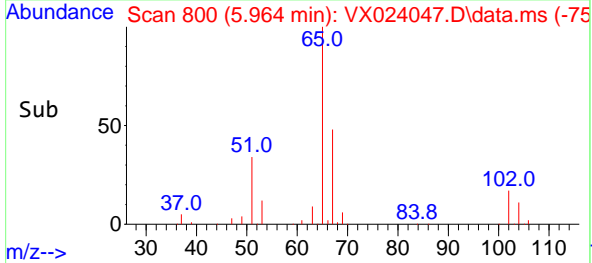
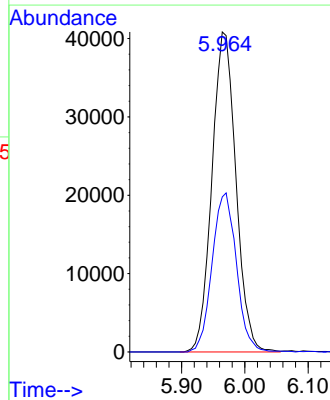


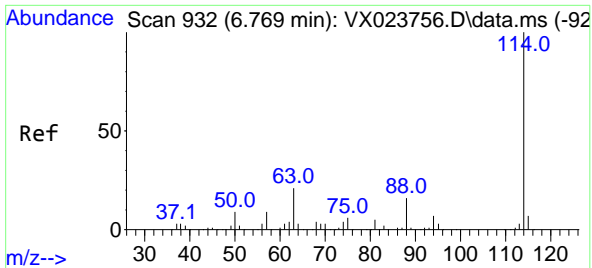
#33
1,2-Dichloroethane-d4
Concen: 54.353 ug/l
RT: 5.964 min Scan# 800
Delta R.T. 0.000 min
Lab File: VX024047.D
Acq: 31 Aug 2021 16:24



Tgt Ion: 65 Resp: 107573

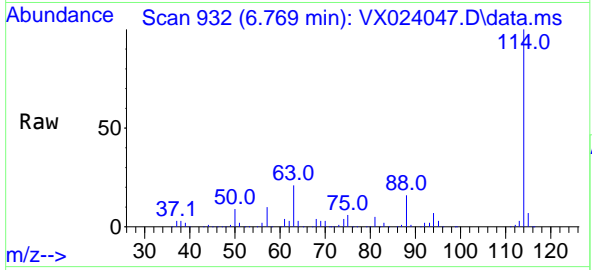
Ion	Ratio	Lower	Upper
65	100		
67	50.3	0.0	105.4



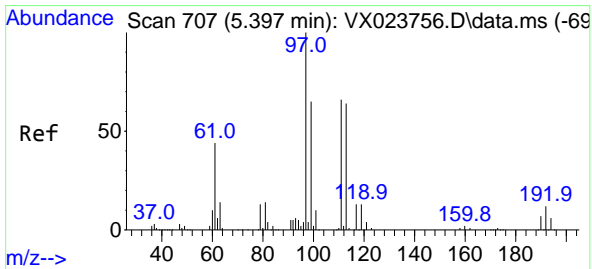
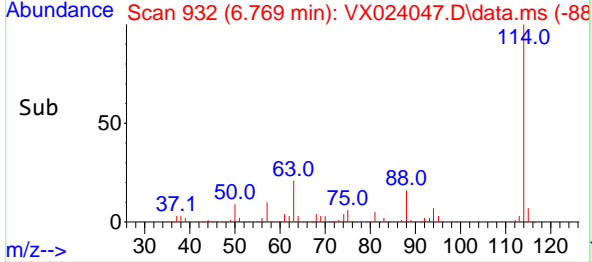
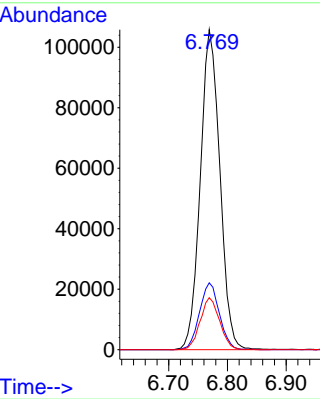


#34
 1,4-Difluorobenzene
 Concen: 50.000 ug/l
 RT: 6.769 min Scan# 932
 Delta R.T. 0.000 min
 Lab File: VX024047.D
 Acq: 31 Aug 2021 16:24

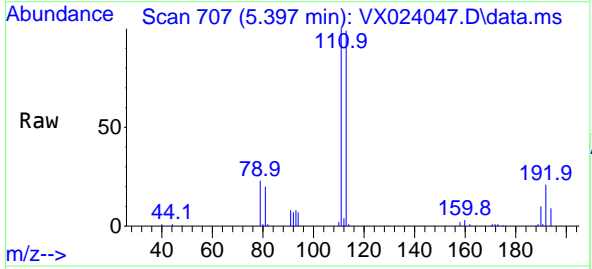
Instrument :
 MSVOA_X
 ClientSampleId :
 TB01-20210827



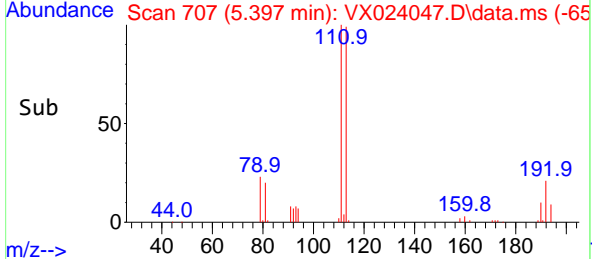
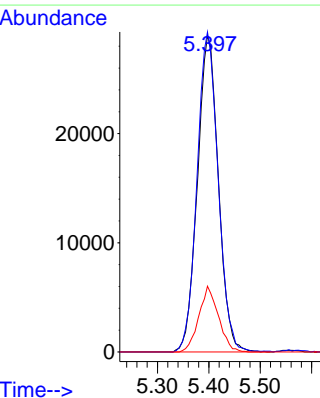
Tgt Ion:114 Resp: 244419
 Ion Ratio Lower Upper
 114 100
 63 20.9 0.0 40.8
 88 16.3 0.0 32.8

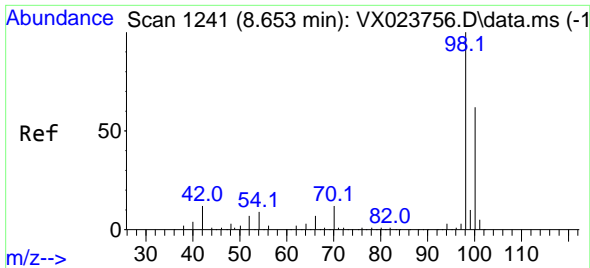


#35
 Dibromofluoromethane
 Concen: 50.787 ug/l
 RT: 5.397 min Scan# 707
 Delta R.T. 0.000 min
 Lab File: VX024047.D
 Acq: 31 Aug 2021 16:24



Tgt Ion:113 Resp: 82160
 Ion Ratio Lower Upper
 113 100
 111 101.6 81.9 122.9
 192 19.4 16.7 25.1

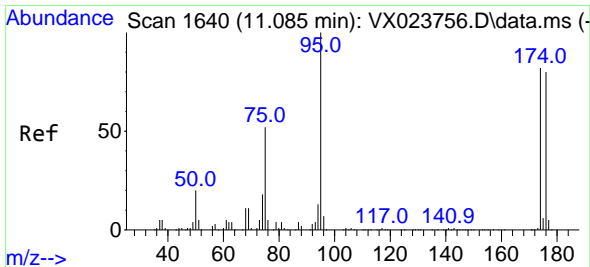
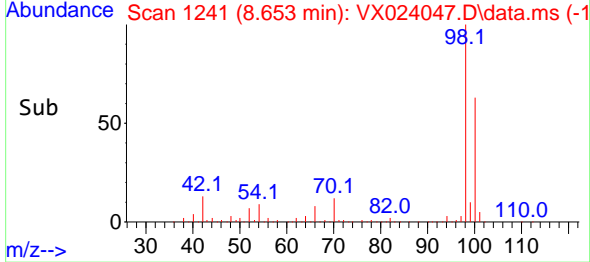
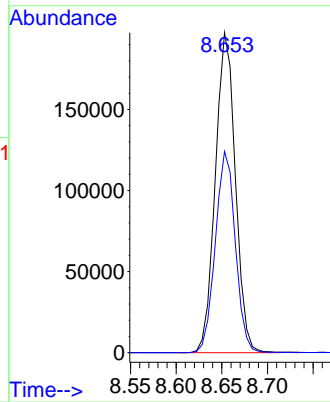
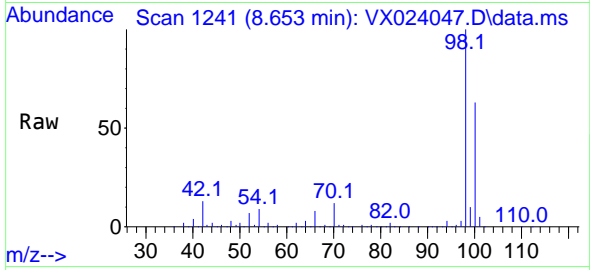




#50
 Toluene-d8
 Concen: 48.882 ug/l
 RT: 8.653 min Scan# 1241
 Delta R.T. -0.000 min
 Lab File: VX024047.D
 Acq: 31 Aug 2021 16:24

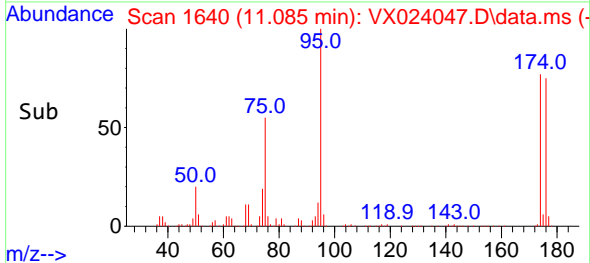
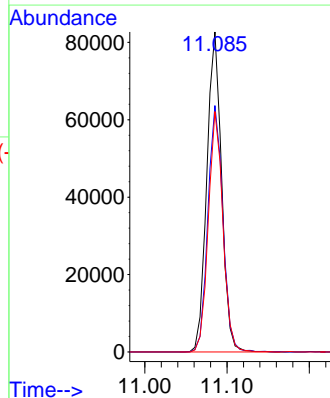
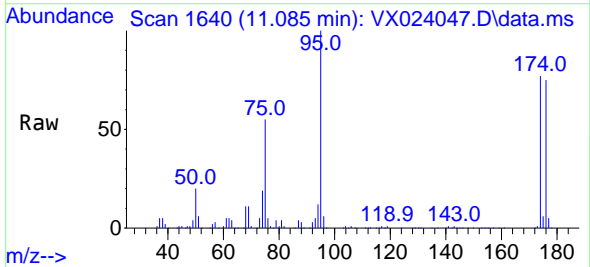
Instrument :
 MSVOA_X
 ClientSampled :
 TB01-20210827

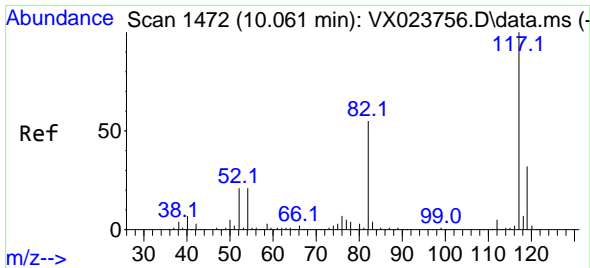
Tgt Ion: 98 Resp: 300977
 Ion Ratio Lower Upper
 98 100
 100 62.8 51.9 77.9



#62
 4-Bromofluorobenzene
 Concen: 45.440 ug/l
 RT: 11.085 min Scan# 1640
 Delta R.T. 0.000 min
 Lab File: VX024047.D
 Acq: 31 Aug 2021 16:24

Tgt Ion: 95 Resp: 102996
 Ion Ratio Lower Upper
 95 100
 174 78.2 0.0 154.6
 176 74.0 0.0 155.8



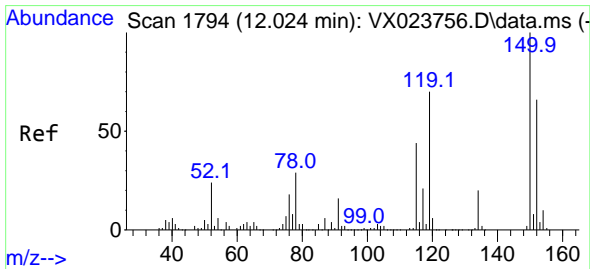
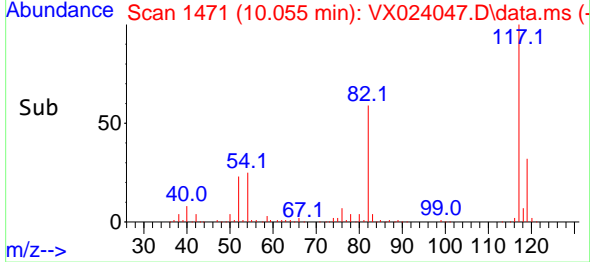
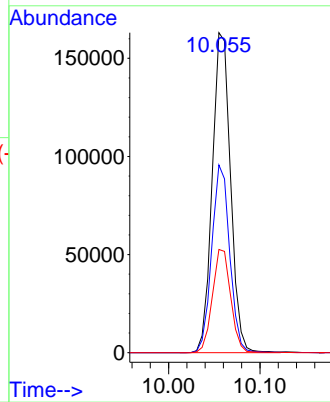
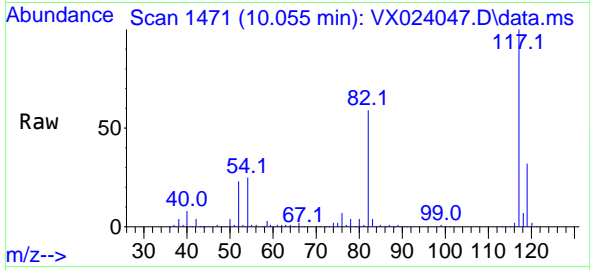


#63
 Chlorobenzene-d5
 Concen: 50.000 ug/l
 RT: 10.055 min Scan# 1471
 Delta R.T. -0.006 min
 Lab File: VX024047.D
 Acq: 31 Aug 2021 16:24

Instrument :
 MSVOA_X
 ClientSampled :
 TB01-20210827

Tgt Ion:117 Resp: 226448

Ion	Ratio	Lower	Upper
117	100		
82	58.6	47.4	71.2
119	32.3	26.6	39.8



#72
 1,4-Dichlorobenzene-d4
 Concen: 50.000 ug/l
 RT: 12.024 min Scan# 1794
 Delta R.T. 0.000 min
 Lab File: VX024047.D
 Acq: 31 Aug 2021 16:24

Tgt Ion:152 Resp: 85972

Ion	Ratio	Lower	Upper
152	100		
115	61.6	41.1	123.3
150	158.0	0.0	349.0

