

Data Path : Z:\voasrv\HPCHEM1\MSVOA\_X\Data\VX083123\  
 Data File : VX037435.D  
 Acq On : 31 Aug 2023 17:06  
 Operator : JC/MD  
 Sample : 04128-09  
 Misc : 5.0mL/MSVOA\_X/WATER  
 ALS Vial : 10 Sample Multiplier: 1

**Instrument :**  
 MSVOA\_X  
**ClientSampleId :**  
 DUP09-20230822

Quant Time: Sep 01 03:14:24 2023  
 Quant Method : Z:\voasrv\HPCHEM1\MSVOA\_X\Method\82X081723W.M  
 Quant Title : SW846 8260  
 QLast Update : Fri Aug 18 09:30:38 2023  
 Response via : Initial Calibration

Compound	R.T.	QIon	Response	Conc	Units	Dev(Min)
-----						
Internal Standards						
1) Pentafluorobenzene	5.550	168	138880	50.000	ug/l	0.00
34) 1,4-Difluorobenzene	6.763	114	228017	50.000	ug/l	0.00
63) Chlorobenzene-d5	10.055	117	198937	50.000	ug/l	0.00
72) 1,4-Dichlorobenzene-d4	12.024	152	87224	50.000	ug/l	0.00
System Monitoring Compounds						
33) 1,2-Dichloroethane-d4	5.952	65	84047	41.977	ug/l	0.00
Spiked Amount	50.000	Range	78 - 117	Recovery	=	83.960%
35) Dibromofluoromethane	5.385	113	69663	46.131	ug/l	0.00
Spiked Amount	50.000	Range	75 - 124	Recovery	=	92.260%
50) Toluene-d8	8.647	98	268216	48.965	ug/l	0.00
Spiked Amount	50.000	Range	92 - 112	Recovery	=	97.920%
62) 4-Bromofluorobenzene	11.079	95	93612	43.487	ug/l	0.00
Spiked Amount	50.000	Range	83 - 123	Recovery	=	86.980%

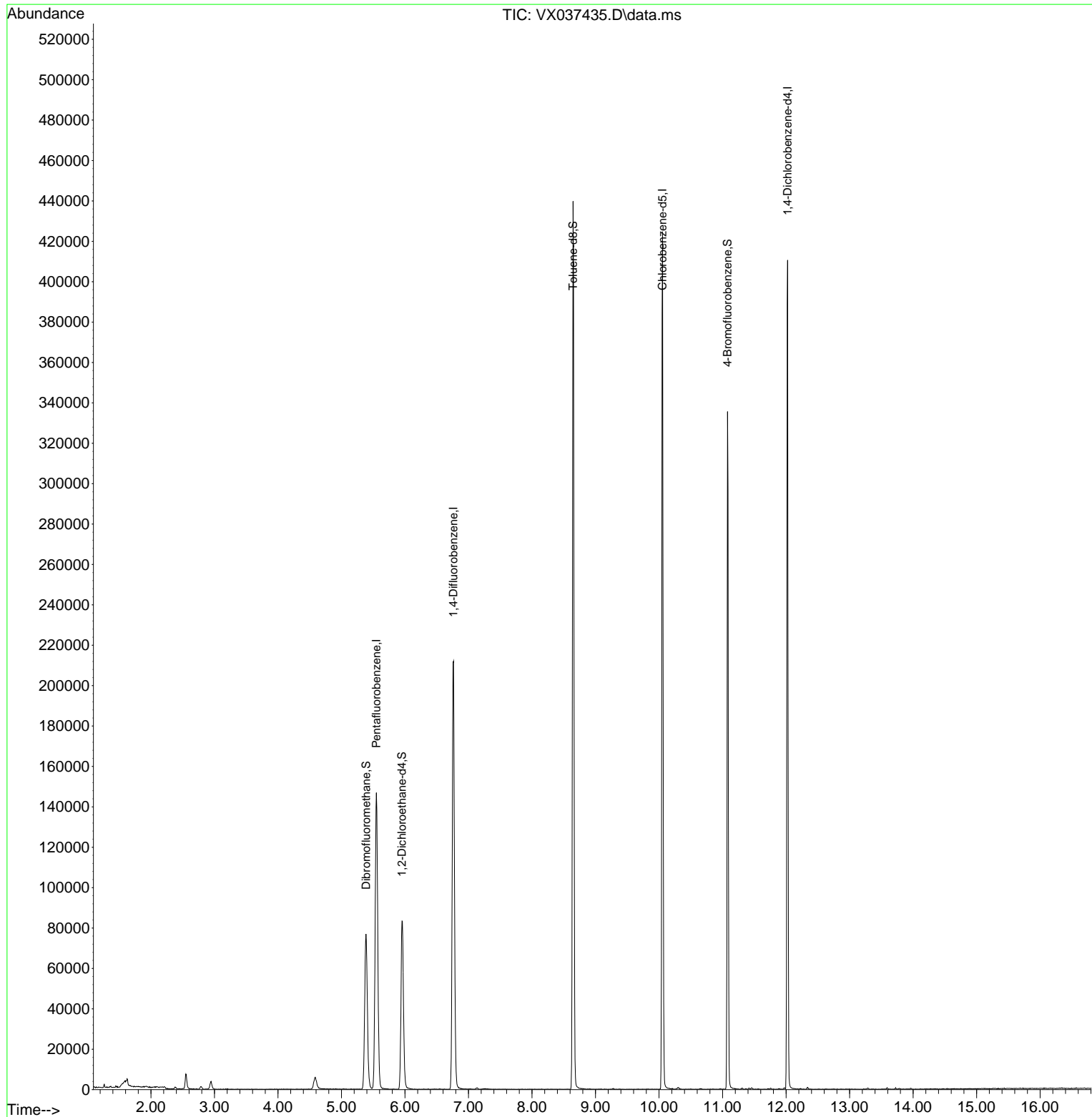
Target Compounds Qvalue  
 -----

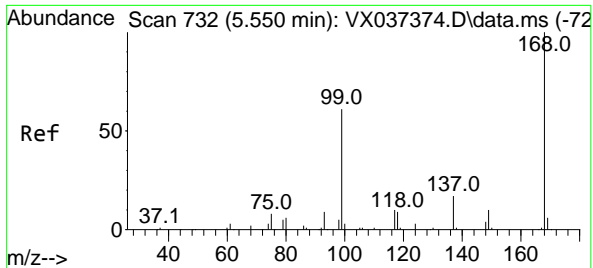
(#) = qualifier out of range (m) = manual integration (+) = signals summed

Data Path : Z:\voasrv\HPCHEM1\MSVOA\_X\Data\VX083123\  
 Data File : VX037435.D  
 Acq On : 31 Aug 2023 17:06  
 Operator : JC/MD  
 Sample : 04128-09  
 Misc : 5.0mL/MSVOA\_X/WATER  
 ALS Vial : 10 Sample Multiplier: 1

Instrument :  
 MSVOA\_X  
 ClientSampleId :  
 DUP09-20230822

Quant Time: Sep 01 03:14:24 2023  
 Quant Method : Z:\voasrv\HPCHEM1\MSVOA\_X\Method\82X081723W.M  
 Quant Title : SW846 8260  
 QLast Update : Fri Aug 18 09:30:38 2023  
 Response via : Initial Calibration

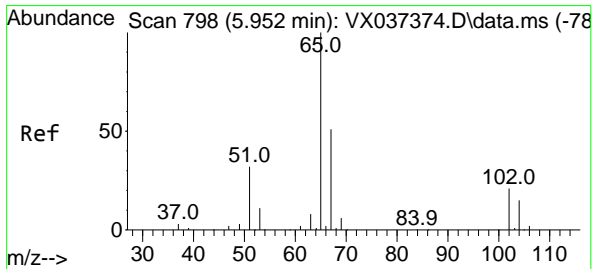
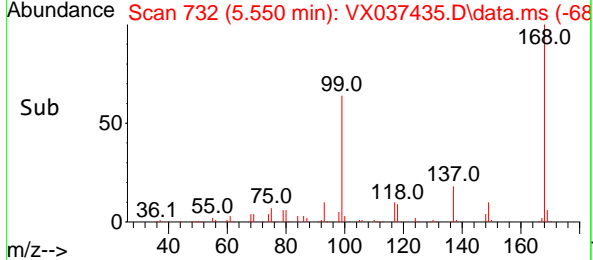
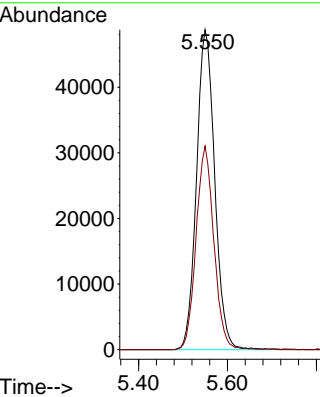
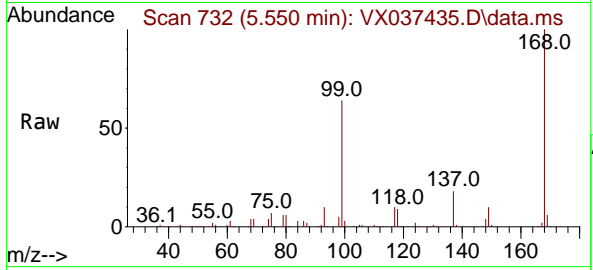




#1  
 Pentafluorobenzene  
 Concen: 50.000 ug/l  
 RT: 5.550 min Scan# 711  
 Delta R.T. -0.000 min  
 Lab File: VX037435.D  
 Acq: 31 Aug 2023 17:06

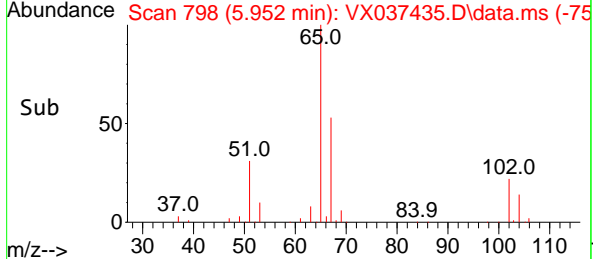
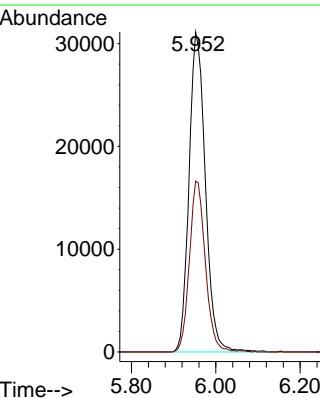
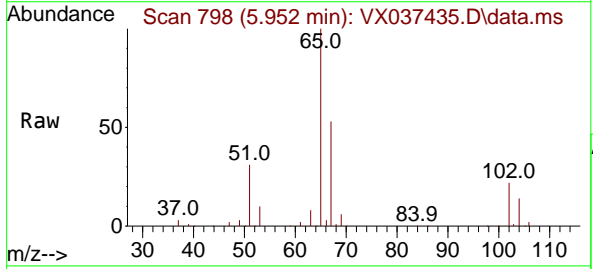
Instrument : MSVOA\_X  
 ClientSampleId : DUP09-20230822

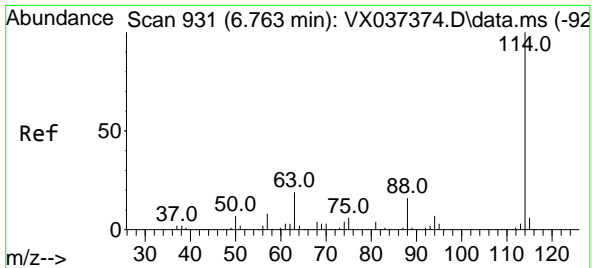
Tgt Ion:168 Resp: 138880  
 Ion Ratio Lower Upper  
 168 100  
 99 63.6 56.6 85.0



#33  
 1,2-Dichloroethane-d4  
 Concen: 41.977 ug/l  
 RT: 5.952 min Scan# 798  
 Delta R.T. -0.006 min  
 Lab File: VX037435.D  
 Acq: 31 Aug 2023 17:06

Tgt Ion: 65 Resp: 84047  
 Ion Ratio Lower Upper  
 65 100  
 67 52.0 0.0 100.2



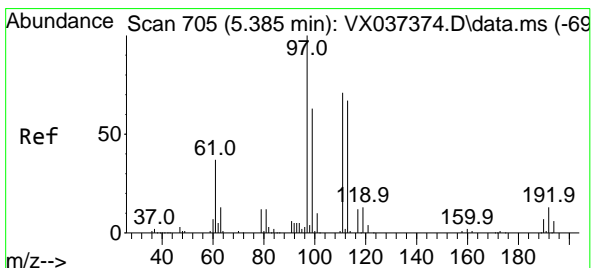
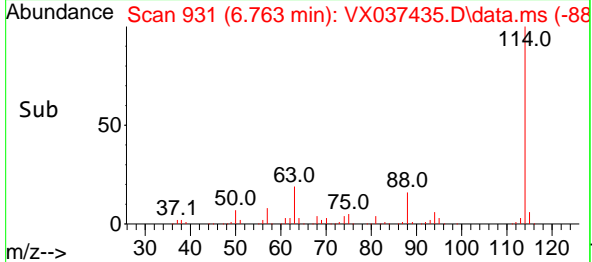
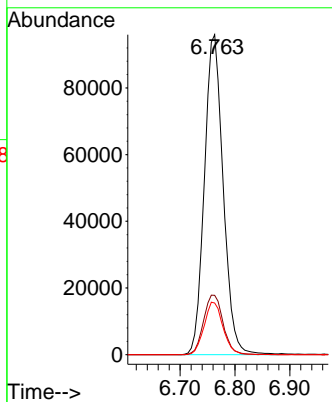
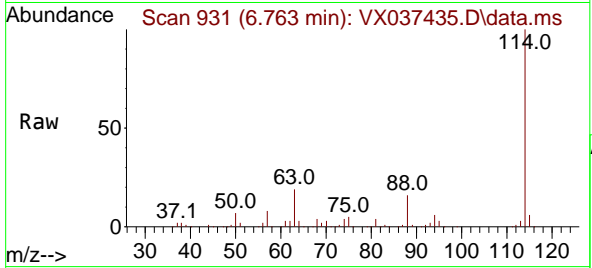


#34  
 1,4-Difluorobenzene  
 Concen: 50.000 ug/l  
 RT: 6.763 min Scan# 911  
 Delta R.T. -0.000 min  
 Lab File: VX037435.D  
 Acq: 31 Aug 2023 17:06

Instrument : MSVOA\_X  
 ClientSampleId : DUP09-20230822

Tgt Ion:114 Resp: 228017

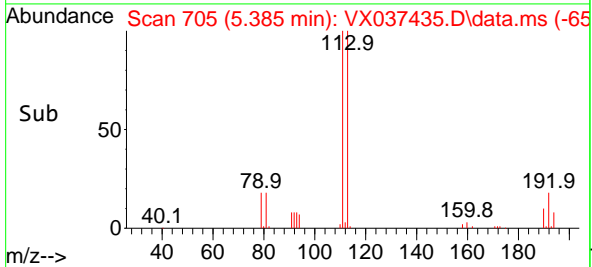
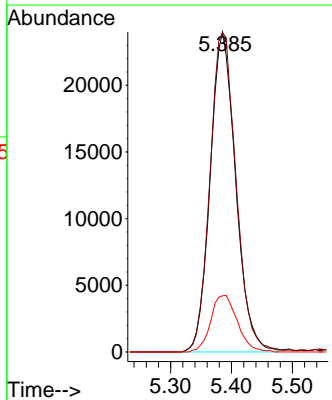
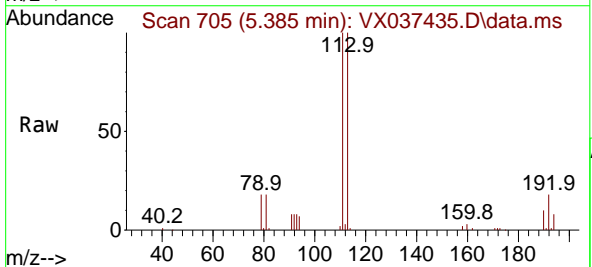
Ion	Ratio	Lower	Upper
114	100		
63	18.6	0.0	45.0
88	16.2	0.0	36.6

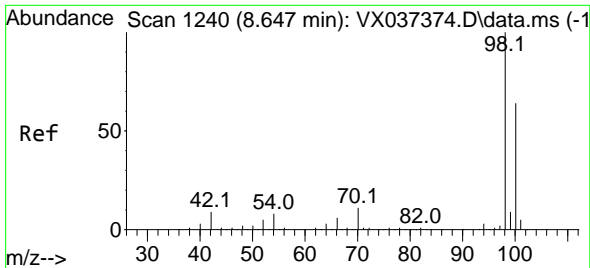


#35  
 Dibromofluoromethane  
 Concen: 46.131 ug/l  
 RT: 5.385 min Scan# 705  
 Delta R.T. -0.000 min  
 Lab File: VX037435.D  
 Acq: 31 Aug 2023 17:06

Tgt Ion:113 Resp: 69663

Ion	Ratio	Lower	Upper
113	100		
111	102.9	82.9	124.3
192	18.5	13.3	19.9

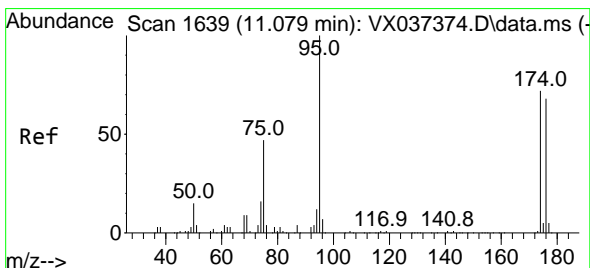
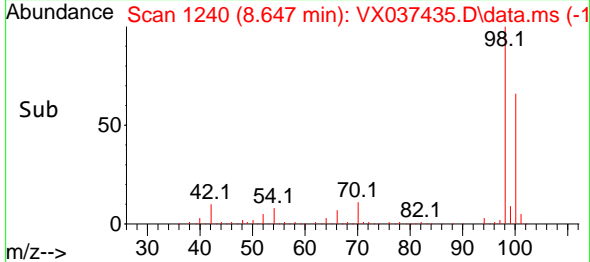
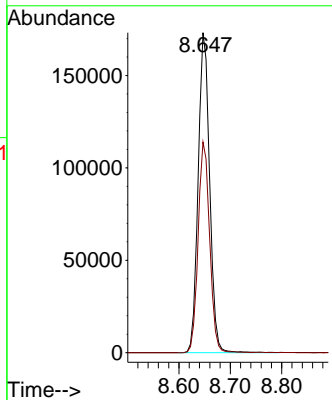
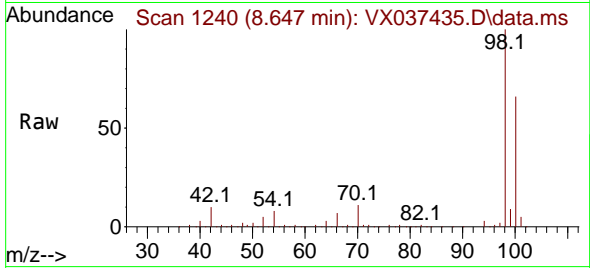




#50  
 Toluene-d8  
 Concen: 48.965 ug/l  
 RT: 8.647 min Scan# 1111  
 Delta R.T. -0.000 min  
 Lab File: VX037435.D  
 Acq: 31 Aug 2023 17:06

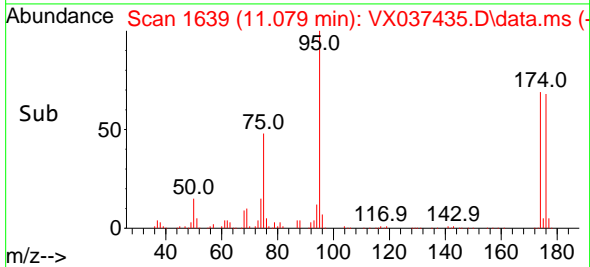
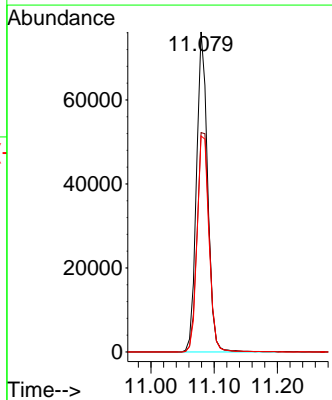
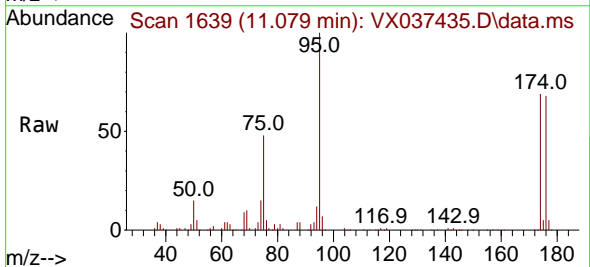
Instrument :  
 MSVOA\_X  
 ClientSampleId :  
 DUP09-20230822

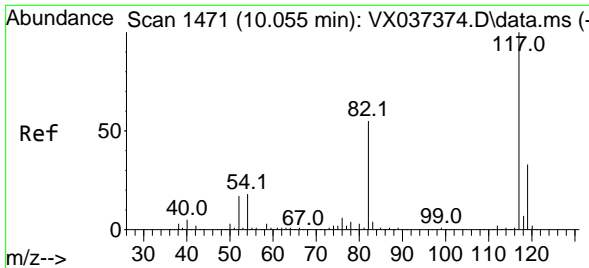
Tgt Ion: 98 Resp: 268216  
 Ion Ratio Lower Upper  
 98 100  
 100 66.2 53.1 79.7



#62  
 4-Bromofluorobenzene  
 Concen: 43.487 ug/l  
 RT: 11.079 min Scan# 1639  
 Delta R.T. -0.000 min  
 Lab File: VX037435.D  
 Acq: 31 Aug 2023 17:06

Tgt Ion: 95 Resp: 93612  
 Ion Ratio Lower Upper  
 95 100  
 174 74.5 0.0 135.6  
 176 72.1 0.0 131.0



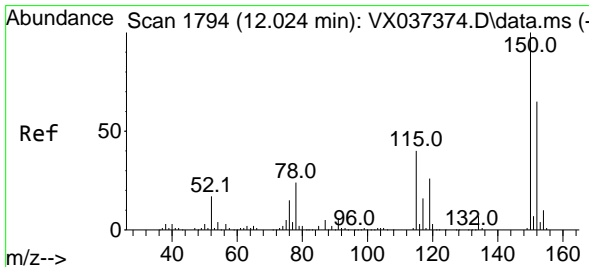
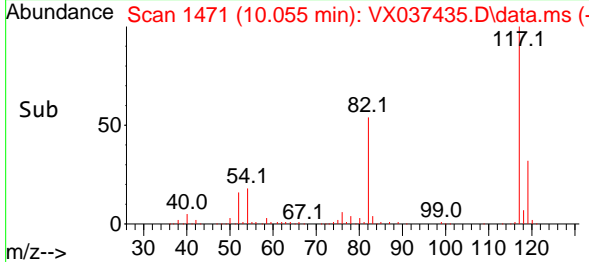
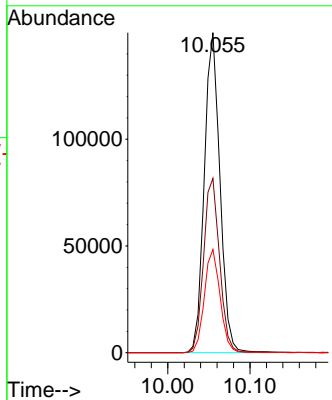
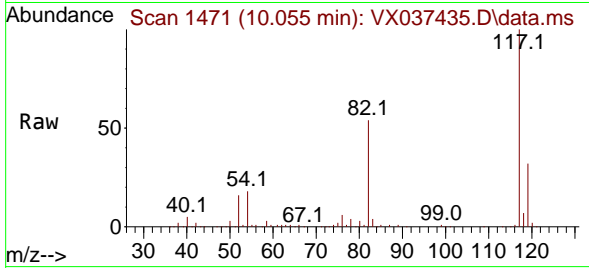


#63  
 Chlorobenzene-d5  
 Concen: 50.000 ug/l  
 RT: 10.055 min Scan# 1471  
 Delta R.T. -0.000 min  
 Lab File: VX037435.D  
 Acq: 31 Aug 2023 17:06

Instrument :  
 MSVOA\_X  
 ClientSampleId :  
 DUP09-20230822

Tgt Ion:117 Resp: 198937

Ion	Ratio	Lower	Upper
117	100		
82	54.5	46.2	69.4
119	32.3	25.5	38.3



#72  
 1,4-Dichlorobenzene-d4  
 Concen: 50.000 ug/l  
 RT: 12.024 min Scan# 1794  
 Delta R.T. -0.000 min  
 Lab File: VX037435.D  
 Acq: 31 Aug 2023 17:06

Tgt Ion:152 Resp: 87224

Ion	Ratio	Lower	Upper
152	100		
115	61.2	43.3	129.9
150	156.0	0.0	345.0

