

Data Path : Z:\voasrv\HPCHEM1\MSVOA_X\Data\VX090122\
 Data File : VX031037.D
 Acq On : 01 Sep 2022 22:06
 Operator : JC/MD
 Sample : N4297-21
 Misc : 5.0mL/MSVOA_X/WATER
 ALS Vial : 23 Sample Multiplier: 1

Instrument :
 MSVOA_X
 ClientSampleId :
 RW9-MW01D3-20220821

Quant Time: Sep 02 02:56:46 2022
 Quant Method : Z:\voasrv\HPCHEM1\MSVOA_X\Method\82X090122W.M
 Quant Title : SW846 8260
 QLast Update : Fri Sep 02 02:49:21 2022
 Response via : Initial Calibration

Compound	R.T.	QIon	Response	Conc	Units	Dev(Min)

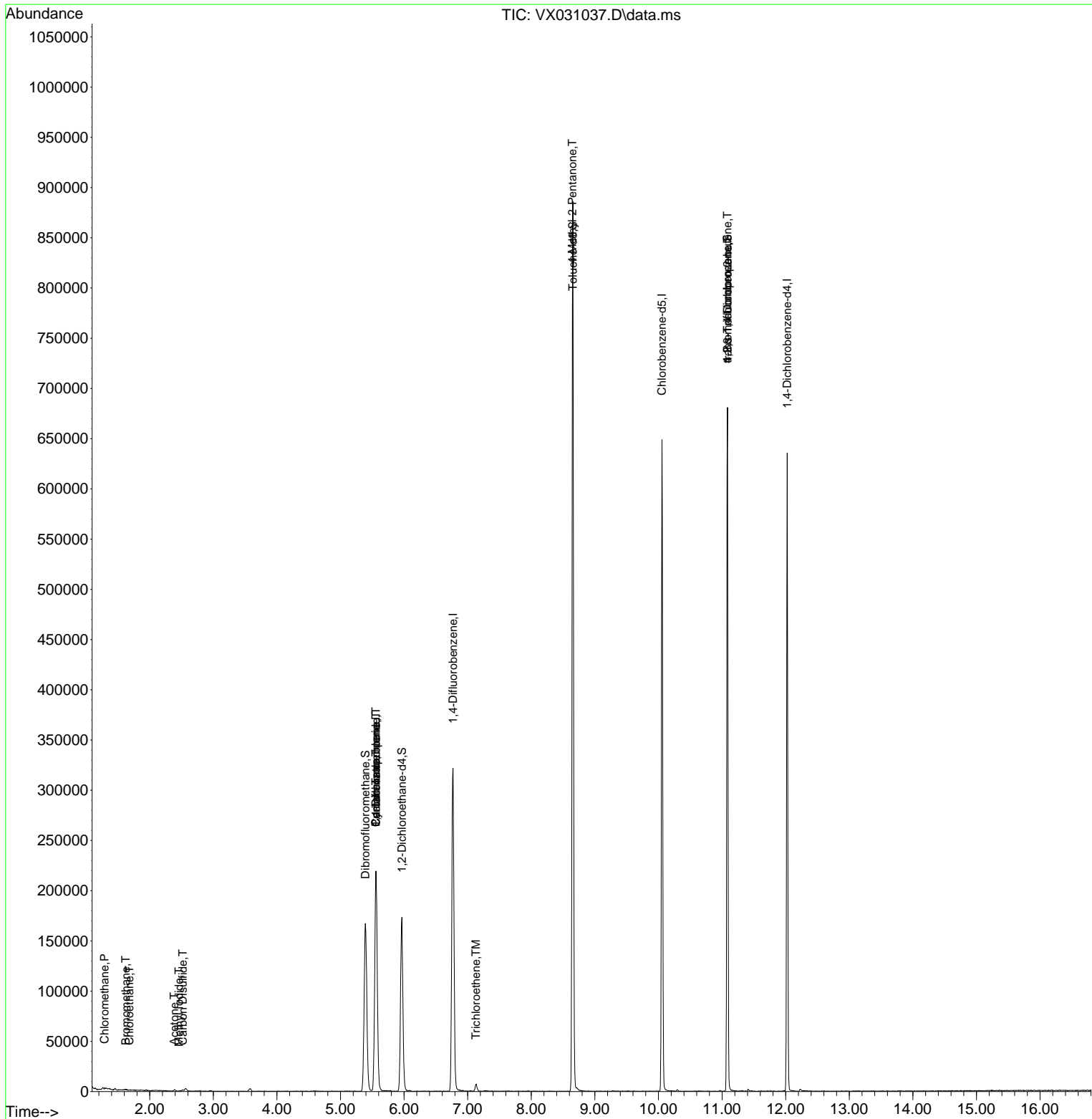
Internal Standards						
1) Pentafluorobenzene	5.556	168	216701	50.000	ug/l	0.00
34) 1,4-Difluorobenzene	6.769	114	359466	50.000	ug/l	0.00
63) Chlorobenzene-d5	10.055	117	317192	50.000	ug/l	0.00
72) 1,4-Dichlorobenzene-d4	12.024	152	138723	50.000	ug/l	0.00
System Monitoring Compounds						
33) 1,2-Dichloroethane-d4	5.964	65	159218	57.103	ug/l	0.00
Spiked Amount	50.000	Range 74 - 125	Recovery	=	114.200%	
35) Dibromofluoromethane	5.391	113	153571	58.542	ug/l	0.00
Spiked Amount	50.000	Range 75 - 124	Recovery	=	117.080%	
50) Toluene-d8	8.652	98	558630	57.862	ug/l	0.00
Spiked Amount	50.000	Range 86 - 113	Recovery	=	115.720%#	
62) 4-Bromofluorobenzene	11.085	95	189351	55.529	ug/l	0.00
Spiked Amount	50.000	Range 83 - 123	Recovery	=	111.060%	
Target Compounds						
						Qvalue
3) Chloromethane	1.288	50	285	0.832	ug/l #	86
5) Bromomethane	1.623	94	239	0.230	ug/l	88
6) Chloroethane	1.678	64	253	1.883	ug/l #	41
10) Methyl Iodide	2.458	142	196	2.982	ug/l #	86
11) Tert butyl alcohol	2.952	59	215	Below Cal	#	74
16) Acetone	2.385	43	1456	1.353	ug/l #	77
17) Carbon Disulfide	2.519	76	1484	0.227	ug/l	100
20) Methylene Chloride	2.782	84	271	Below Cal	#	57
31) Cyclohexane	5.556	56	3043	0.799	ug/l #	1
36) 1,1-Dichloropropene	5.556	75	15043	4.094	ug/l #	48
38) Carbon Tetrachloride	5.556	117	21628	5.671	ug/l #	17
44) Trichloroethene	7.128	130	2962	0.887	ug/l	66
51) 4-Methyl-2-Pentanone	8.646	43	1825	0.569	ug/l #	1
76) 1,2,3-Trichloropropane	11.085	75	87326	26.629	ug/l #	38
81) trans-1,4-Dichloro-2-b...	11.085	75	87326	83.690	ug/l #	13

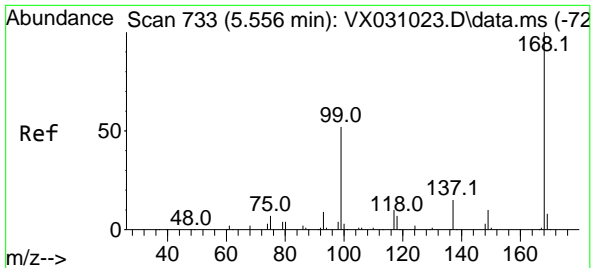
(#) = qualifier out of range (m) = manual integration (+) = signals summed

Data Path : Z:\voasrv\HPCHEM1\MSVOA_X\Data\VX090122\
 Data File : VX031037.D
 Acq On : 01 Sep 2022 22:06
 Operator : JC/MD
 Sample : N4297-21
 Misc : 5.0mL/MSVOA_X/WATER
 ALS Vial : 23 Sample Multiplier: 1

Instrument :
 MSVOA_X
 ClientSampleId :
 RW9-MW01D3-20220821

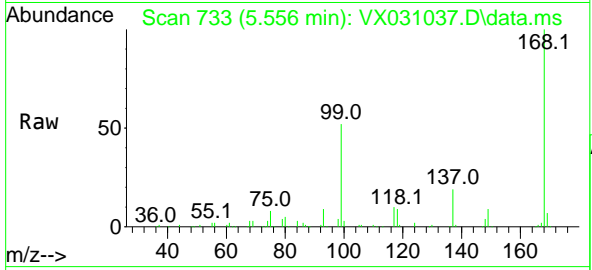
Quant Time: Sep 02 02:56:46 2022
 Quant Method : Z:\voasrv\HPCHEM1\MSVOA_X\Method\82X090122W.M
 Quant Title : SW846 8260
 QLast Update : Fri Sep 02 02:49:21 2022
 Response via : Initial Calibration



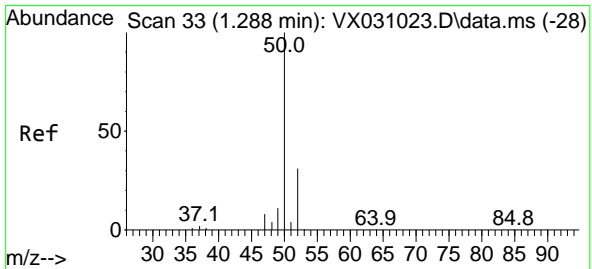
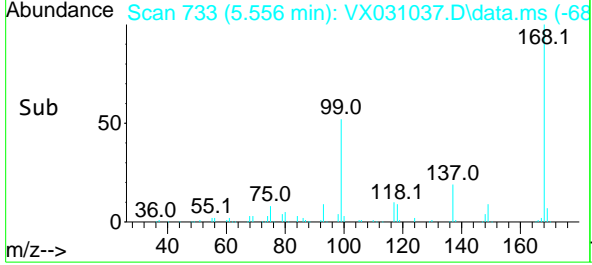
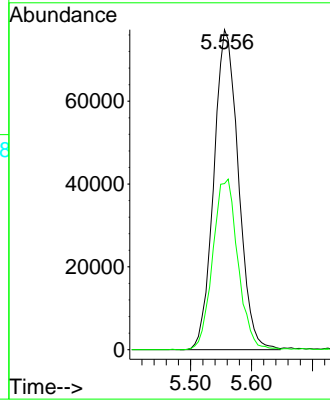


#1
 Pentafluorobenzene
 Concen: 50.000 ug/l
 RT: 5.556 min Scan# 71
 Delta R.T. -0.000 min
 Lab File: VX031037.D
 Acq: 01 Sep 2022 22:06

Instrument : MSVOA_X
 ClientSampleId : RW9-MW01D3-20220821

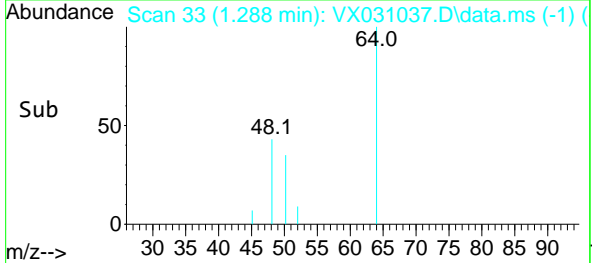
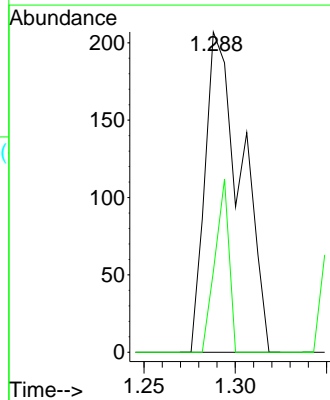
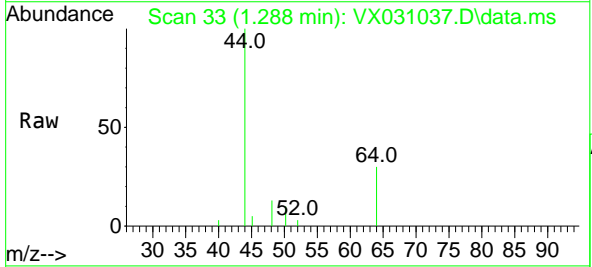


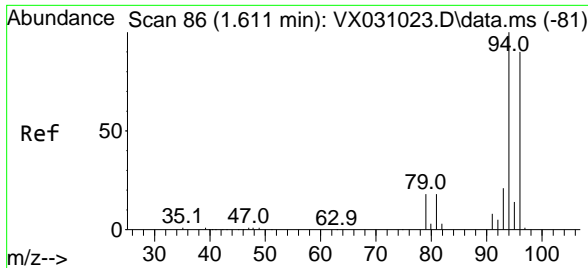
Tgt Ion:168 Resp: 216701
 Ion Ratio Lower Upper
 168 100
 99 51.9 44.0 66.0



#3
 Chloromethane
 Concen: 0.832 ug/l
 RT: 1.288 min Scan# 33
 Delta R.T. -0.000 min
 Lab File: VX031037.D
 Acq: 01 Sep 2022 22:06

Tgt Ion: 50 Resp: 285
 Ion Ratio Lower Upper
 50 100
 52 25.1 26.3 39.5#

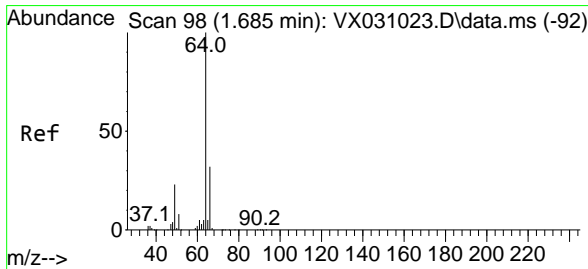
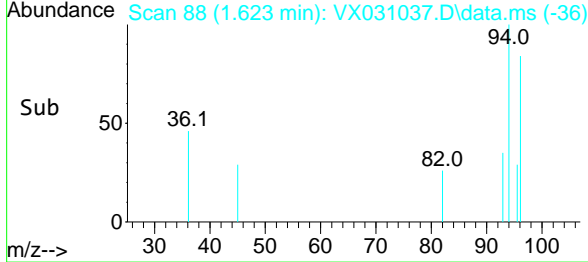
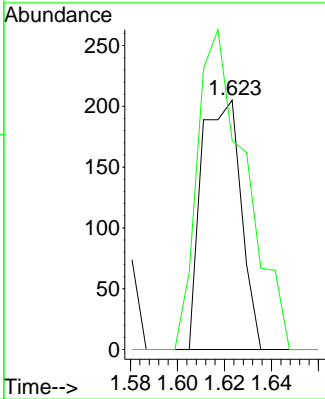
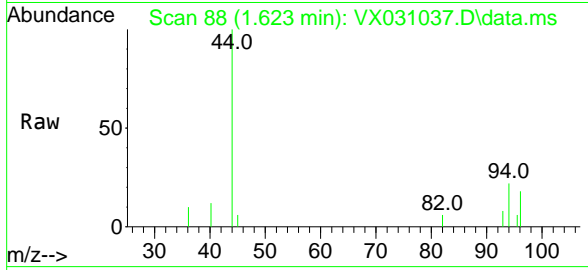




#5
 Bromomethane
 Concen: 0.230 ug/l
 RT: 1.623 min Scan# 81
 Delta R.T. 0.018 min
 Lab File: VX031037.D
 Acq: 01 Sep 2022 22:06

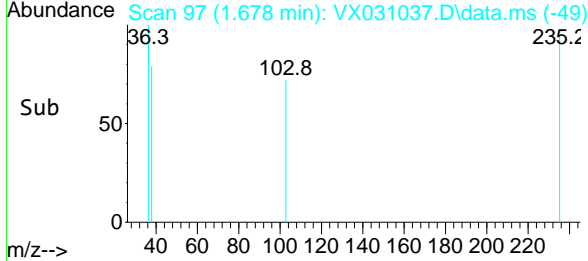
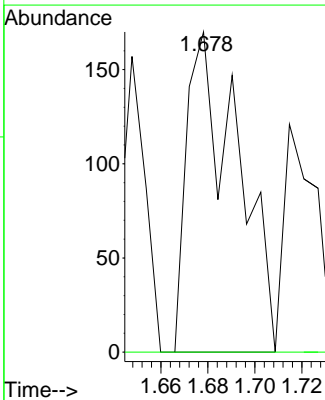
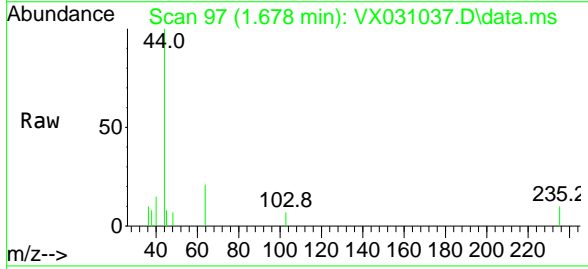
Instrument : MSVOA_X
 ClientSampleId : RW9-MW01D3-20220821

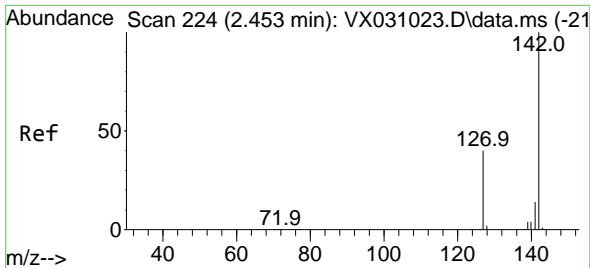
Tgt Ion: 94 Resp: 239
 Ion Ratio Lower Upper
 94 100
 96 83.9 76.9 115.3



#6
 Chloroethane
 Concen: 1.883 ug/l
 RT: 1.678 min Scan# 97
 Delta R.T. -0.007 min
 Lab File: VX031037.D
 Acq: 01 Sep 2022 22:06

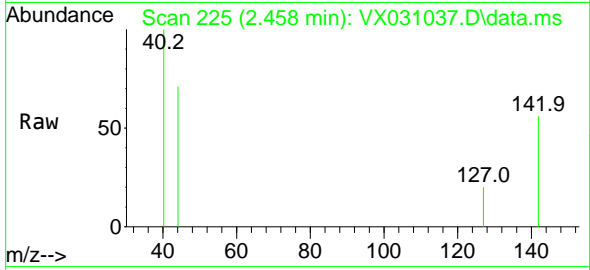
Tgt Ion: 64 Resp: 253
 Ion Ratio Lower Upper
 64 100
 66 0.0 27.2 40.8#



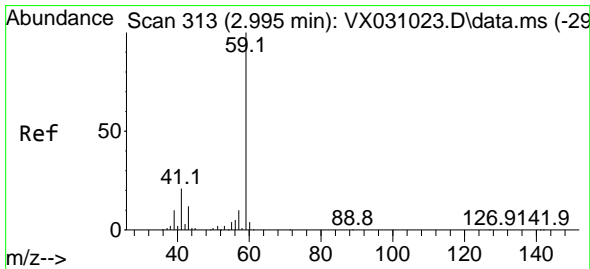
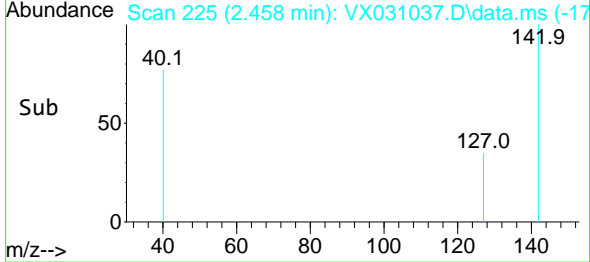
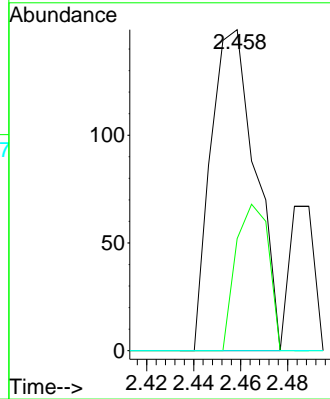


#10
Methyl Iodide
Concen: 2.982 ug/l
RT: 2.458 min Scan# 21
Delta R.T. 0.006 min
Lab File: VX031037.D
Acq: 01 Sep 2022 22:06

Instrument : MSVOA_X
ClientSampleId : RW9-MW01D3-20220821

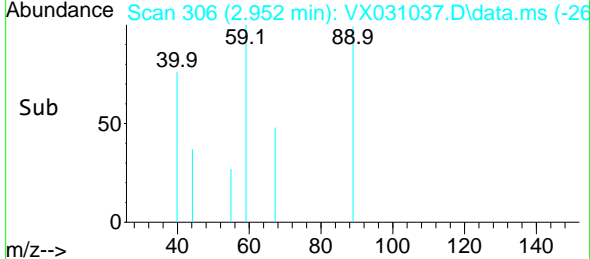
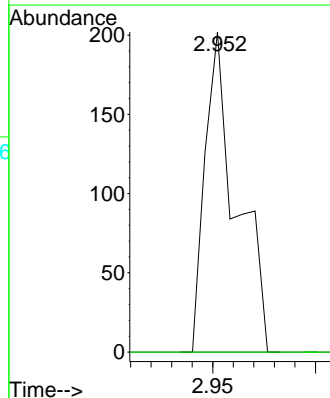
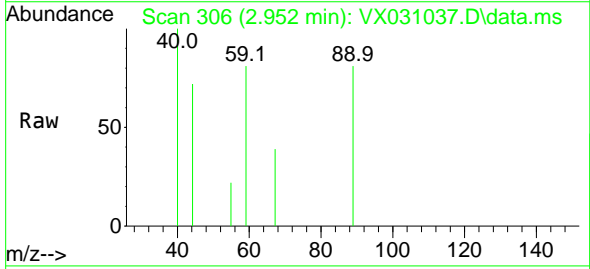


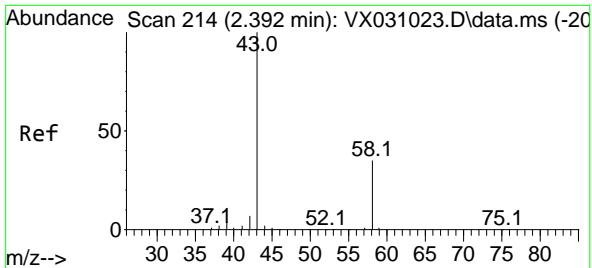
Tgt Ion:142 Resp: 196
Ion Ratio Lower Upper
142 100
127 33.7 30.2 45.2
141 0.0 11.3 16.9#



#11
Tert butyl alcohol
Concen: Below Cal
RT: 2.952 min Scan# 306
Delta R.T. -0.037 min
Lab File: VX031037.D
Acq: 01 Sep 2022 22:06

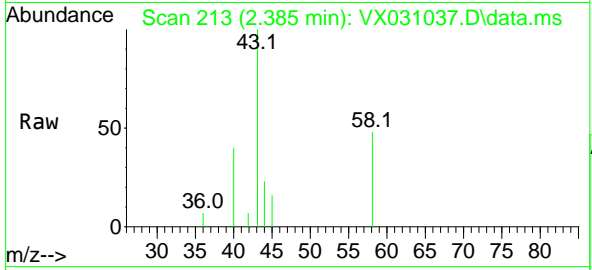
Tgt Ion: 59 Resp: 215
Ion Ratio Lower Upper
59 100
57 0.0 7.4 11.2#



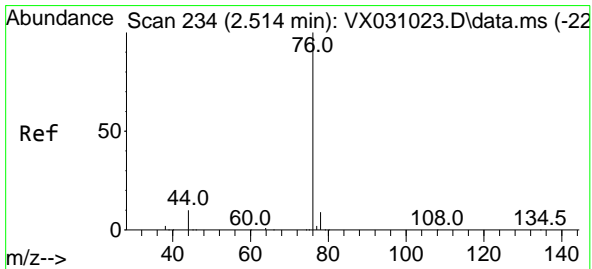
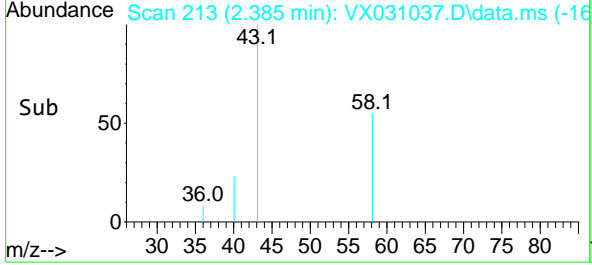
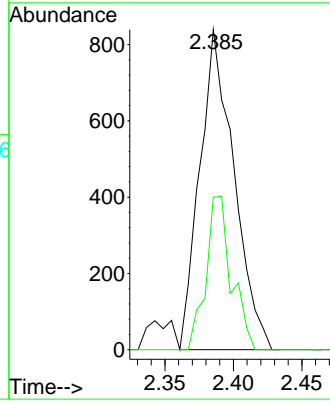


#16
 Acetone
 Concen: 1.353 ug/l
 RT: 2.385 min Scan# 21
 Delta R.T. -0.001 min
 Lab File: VX031037.D
 Acq: 01 Sep 2022 22:06

Instrument : MSVOA_X
 ClientSampleId : RW9-MW01D3-20220821

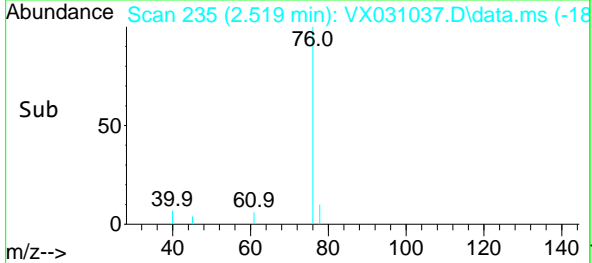
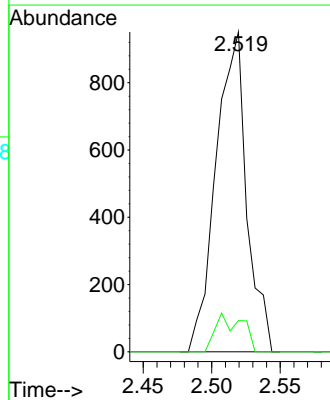
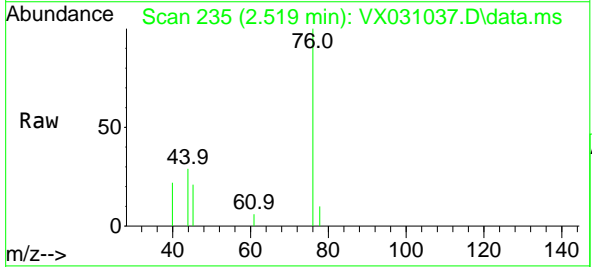


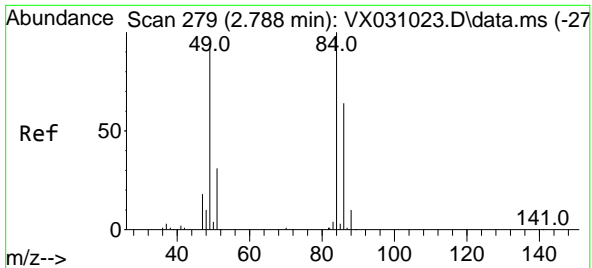
Tgt Ion: 43 Resp: 1456
 Ion Ratio Lower Upper
 43 100
 58 47.7 27.7 41.5#



#17
 Carbon Disulfide
 Concen: 0.227 ug/l
 RT: 2.519 min Scan# 235
 Delta R.T. 0.005 min
 Lab File: VX031037.D
 Acq: 01 Sep 2022 22:06

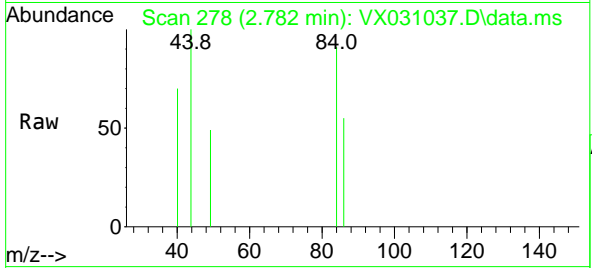
Tgt Ion: 76 Resp: 1484
 Ion Ratio Lower Upper
 76 100
 78 9.8 7.8 11.6





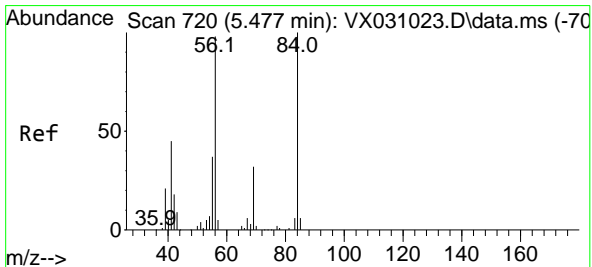
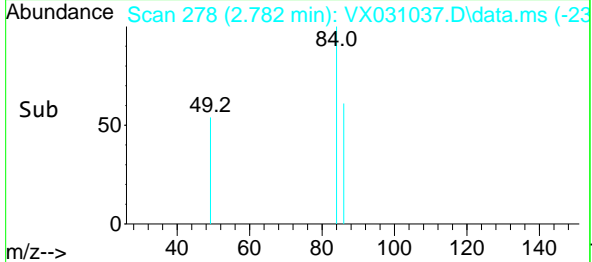
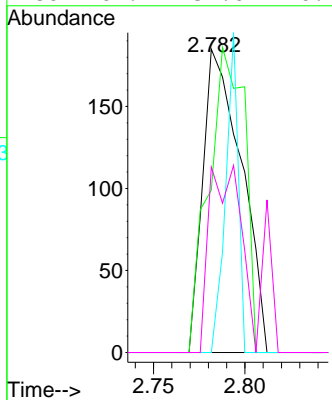
#20
 Methylene Chloride
 Concen: Below Cal
 RT: 2.782 min Scan# 21
 Delta R.T. -0.006 min
 Lab File: VX031037.D
 Acq: 01 Sep 2022 22:06

Instrument : MSVOA_X
 ClientSampleId : RW9-MW01D3-20220821



Tgt Ion: 84 Resp: 271

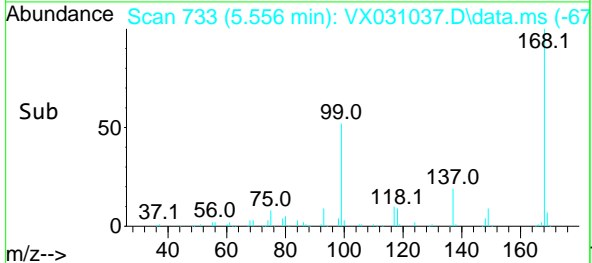
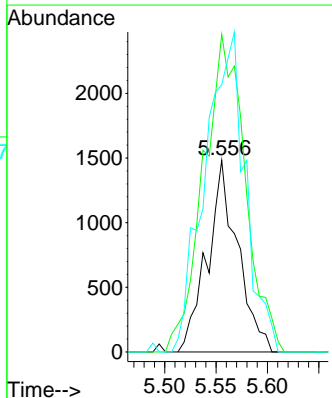
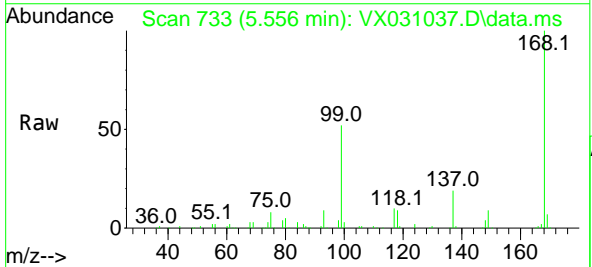
Ion	Ratio	Lower	Upper
84	100		
49	53.5	93.8	140.6#
51	0.0	29.4	44.0#
86	61.1	51.0	76.4

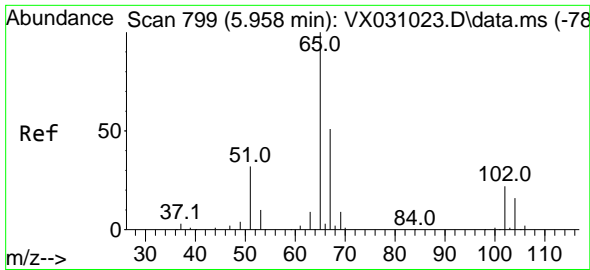


#31
 Cyclohexane
 Concen: 0.799 ug/l
 RT: 5.556 min Scan# 733
 Delta R.T. 0.079 min
 Lab File: VX031037.D
 Acq: 01 Sep 2022 22:06

Tgt Ion: 56 Resp: 3043

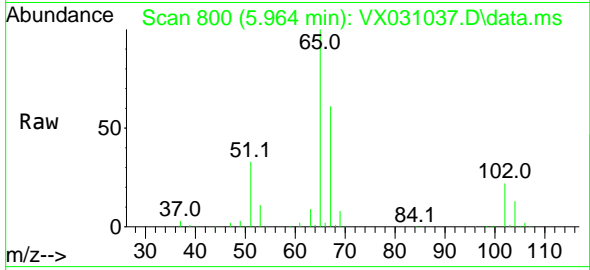
Ion	Ratio	Lower	Upper
56	100		
69	160.4	25.4	38.0#
84	139.4	68.9	103.3#



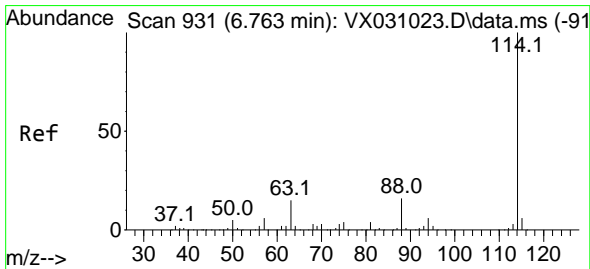
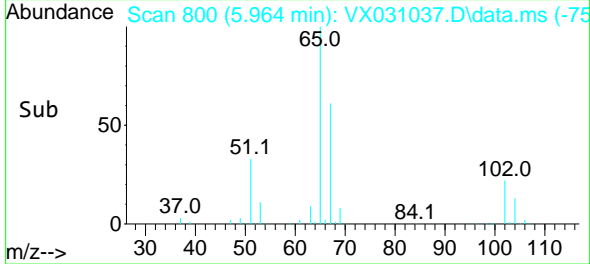
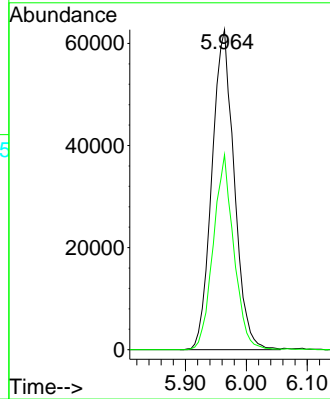


#33
 1,2-Dichloroethane-d4
 Concen: 57.103 ug/l
 RT: 5.964 min Scan# 80
 Delta R.T. 0.006 min
 Lab File: VX031037.D
 Acq: 01 Sep 2022 22:06

Instrument : MSVOA_X
 ClientSampleId : RW9-MW01D3-20220821

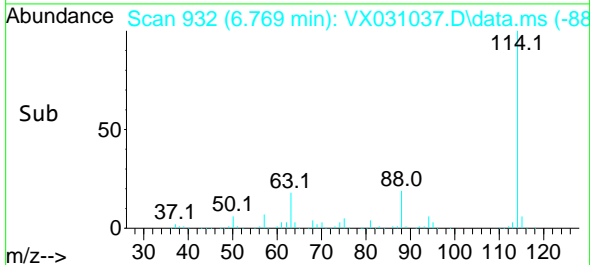
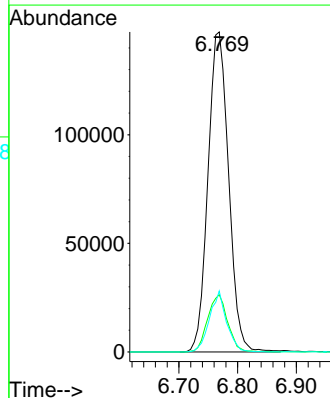
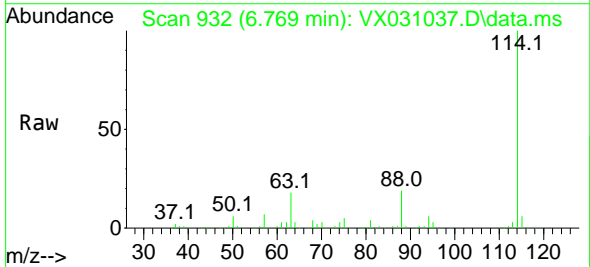


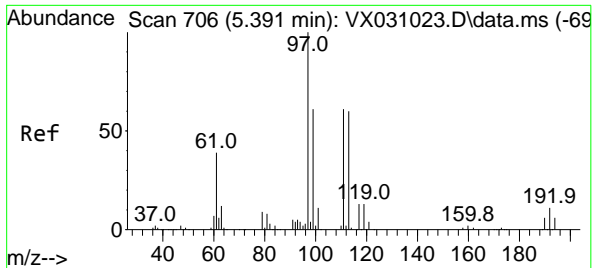
Tgt Ion: 65 Resp: 159218
 Ion Ratio Lower Upper
 65 100
 67 56.3 0.0 109.6



#34
 1,4-Difluorobenzene
 Concen: 50.000 ug/l
 RT: 6.769 min Scan# 932
 Delta R.T. -0.000 min
 Lab File: VX031037.D
 Acq: 01 Sep 2022 22:06

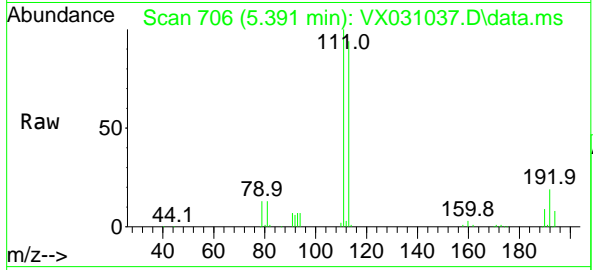
Tgt Ion: 114 Resp: 359466
 Ion Ratio Lower Upper
 114 100
 63 17.9 0.0 38.4
 88 19.0 0.0 31.8





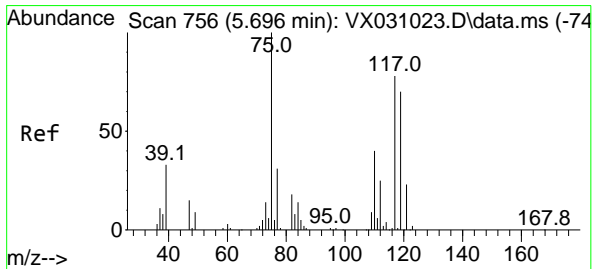
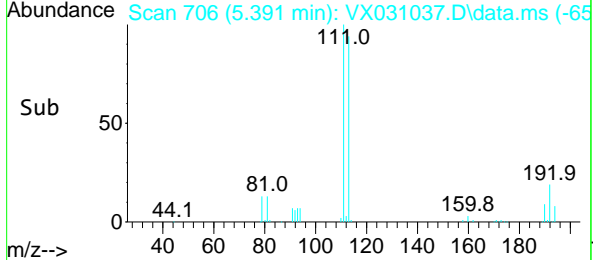
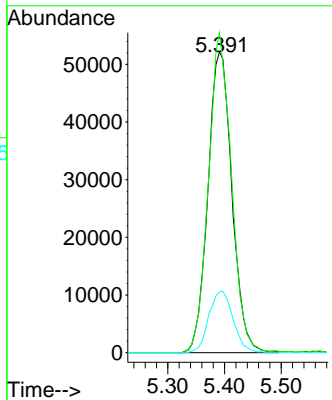
#35
 Dibromofluoromethane
 Concen: 58.542 ug/l
 RT: 5.391 min Scan# 706
 Delta R.T. -0.000 min
 Lab File: VX031037.D
 Acq: 01 Sep 2022 22:06

Instrument :
 MSVOA_X
ClientSampleId :
 RW9-MW01D3-20220821

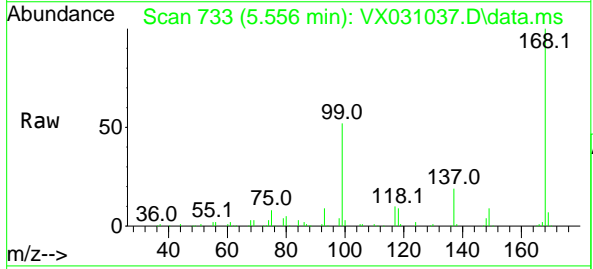


Tgt Ion: 113 Resp: 153571

Ion	Ratio	Lower	Upper
113	100		
111	101.6	83.2	124.8
192	20.7	14.8	22.2

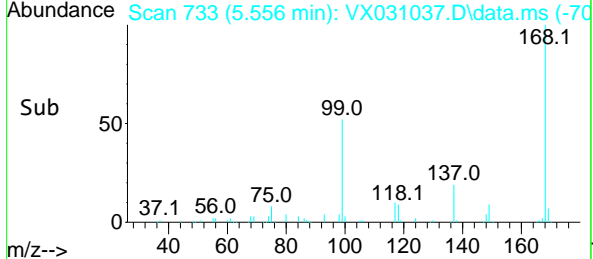
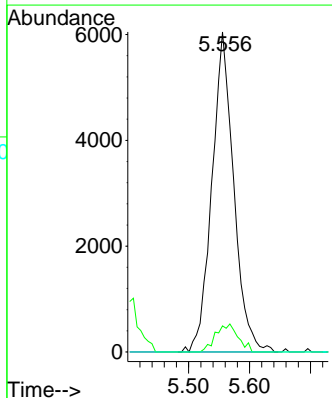


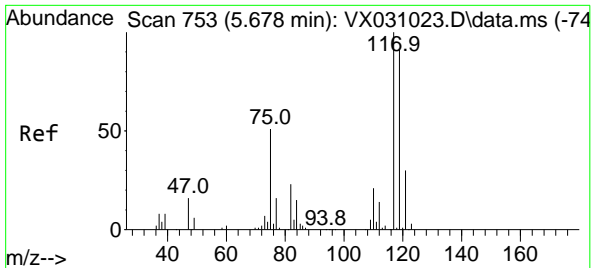
#36
 1,1-Dichloropropene
 Concen: 4.094 ug/l
 RT: 5.556 min Scan# 733
 Delta R.T. -0.140 min
 Lab File: VX031037.D
 Acq: 01 Sep 2022 22:06



Tgt Ion: 75 Resp: 15043

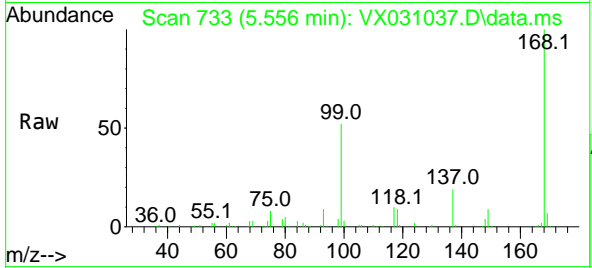
Ion	Ratio	Lower	Upper
75	100		
110	9.0	19.3	57.9#
77	0.0	24.4	36.6#



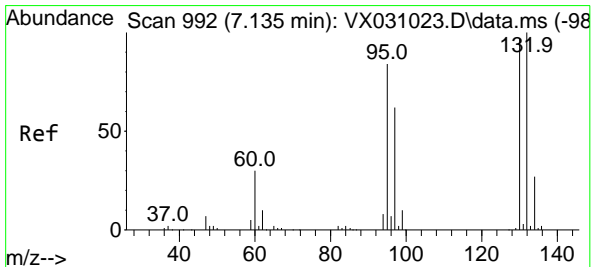
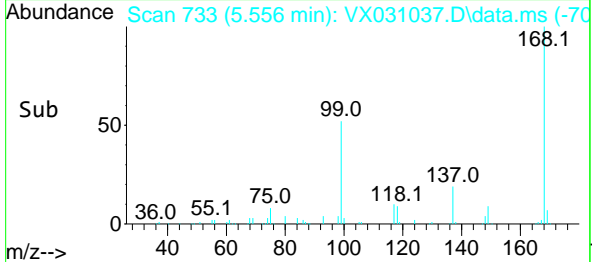
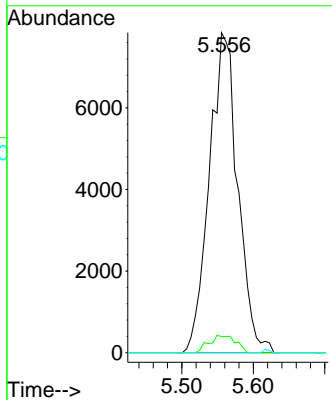


#38
 Carbon Tetrachloride
 Concen: 5.671 ug/l
 RT: 5.556 min Scan# 711
 Delta R.T. -0.128 min
 Lab File: VX031037.D
 Acq: 01 Sep 2022 22:06

Instrument : MSVOA_X
 ClientSampleId : RW9-MW01D3-20220821

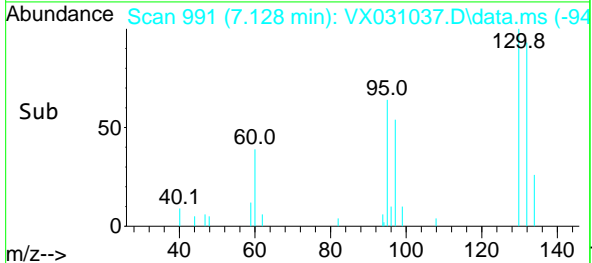
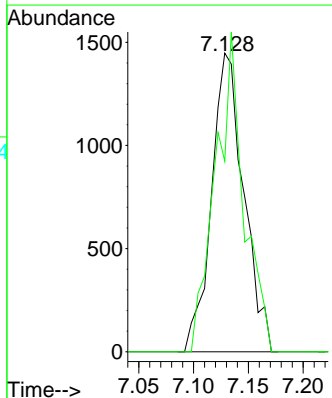
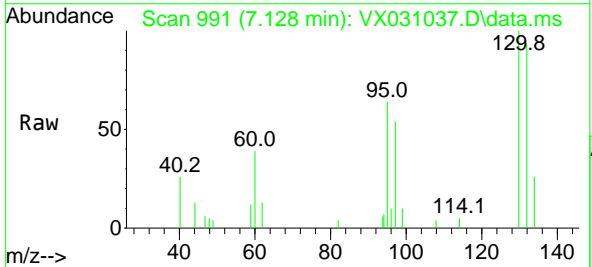


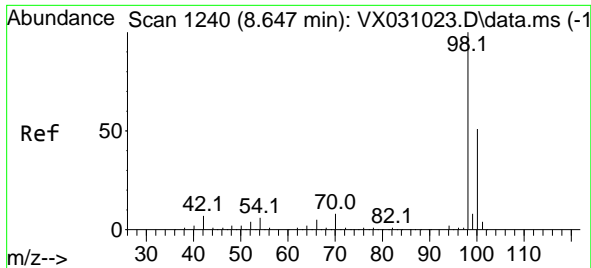
Tgt Ion:117 Resp: 21628
 Ion Ratio Lower Upper
 117 100
 119 5.0 74.1 111.1#
 121 0.0 25.8 38.8#



#44
 Trichloroethene
 Concen: 0.887 ug/l
 RT: 7.128 min Scan# 991
 Delta R.T. -0.001 min
 Lab File: VX031037.D
 Acq: 01 Sep 2022 22:06

Tgt Ion:130 Resp: 2962
 Ion Ratio Lower Upper
 130 100
 95 63.8 0.0 194.8

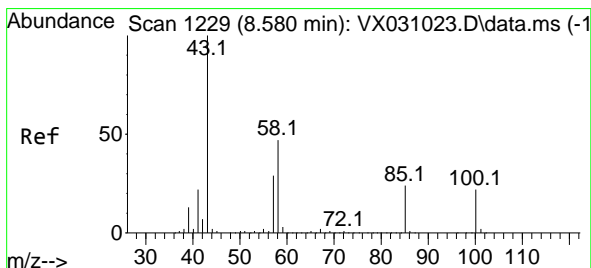
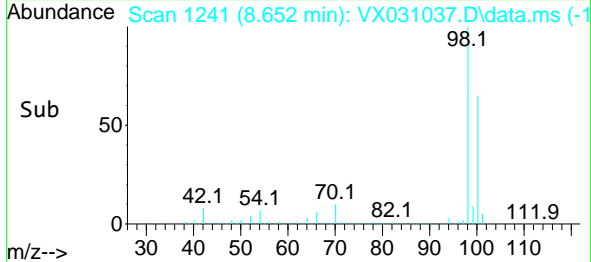
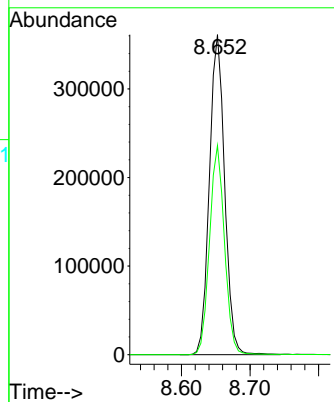
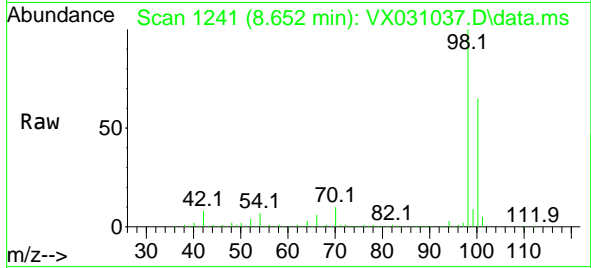




#50
 Toluene-d8
 Concen: 57.862 ug/l
 RT: 8.652 min Scan# 11
 Delta R.T. -0.001 min
 Lab File: VX031037.D
 Acq: 01 Sep 2022 22:06

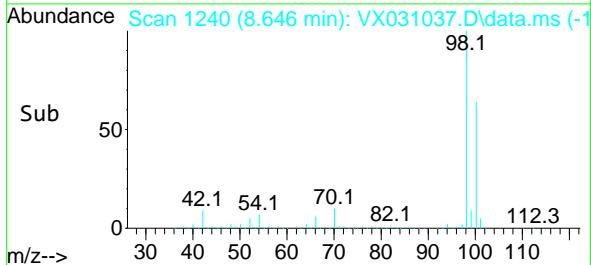
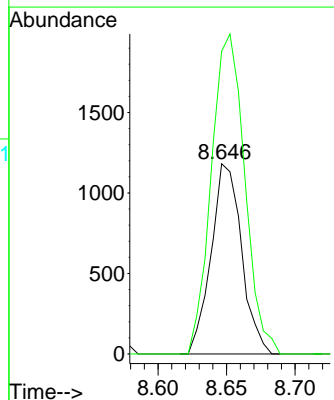
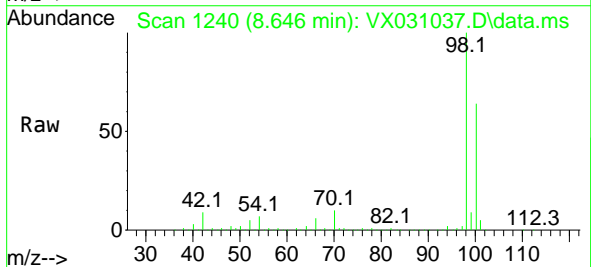
Instrument :
 MSVOA_X
 ClientSampleId :
 RW9-MW01D3-20220821

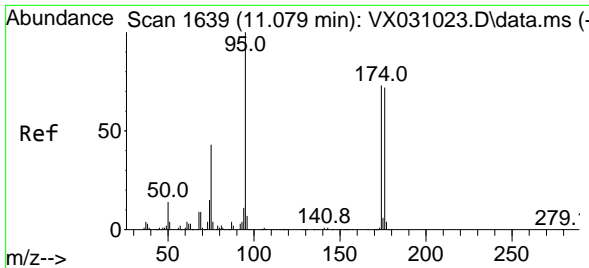
Tgt Ion: 98 Resp: 558630
 Ion Ratio Lower Upper
 98 100
 100 64.1 52.3 78.5



#51
 4-Methyl-2-Pentanone
 Concen: 0.569 ug/l
 RT: 8.646 min Scan# 1240
 Delta R.T. 0.066 min
 Lab File: VX031037.D
 Acq: 01 Sep 2022 22:06

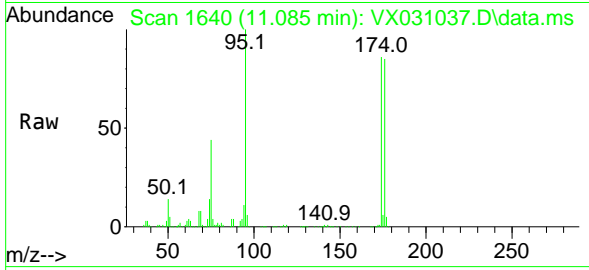
Tgt Ion: 43 Resp: 1825
 Ion Ratio Lower Upper
 43 100
 58 184.5 31.4 47.2#



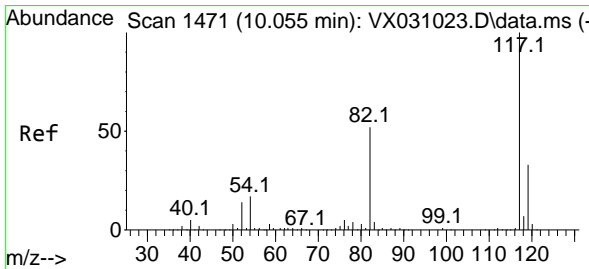
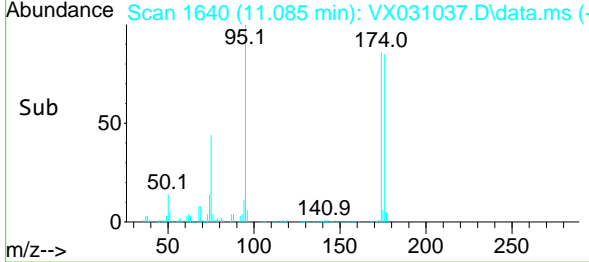
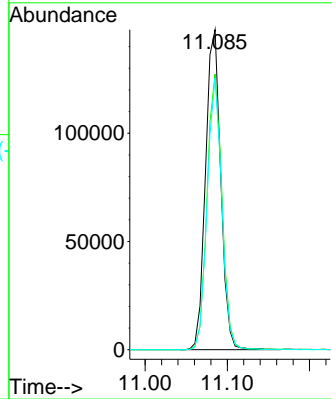


#62
 4-Bromofluorobenzene
 Concen: 55.529 ug/l
 RT: 11.085 min Scan# 1640
 Delta R.T. 0.000 min
 Lab File: VX031037.D
 Acq: 01 Sep 2022 22:06

Instrument : MSVOA_X
 ClientSampleId : RW9-MW01D3-20220821

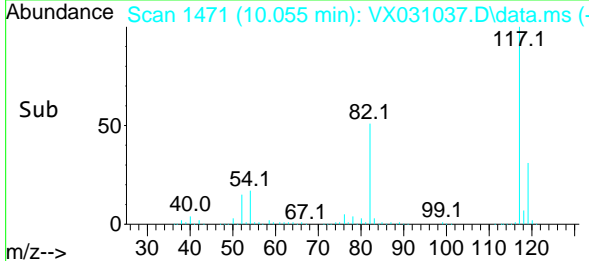
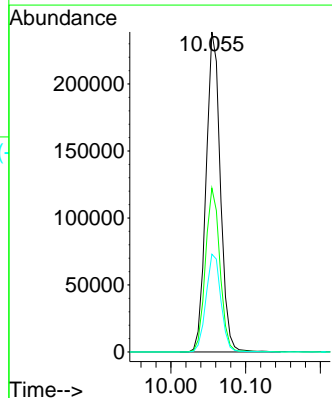
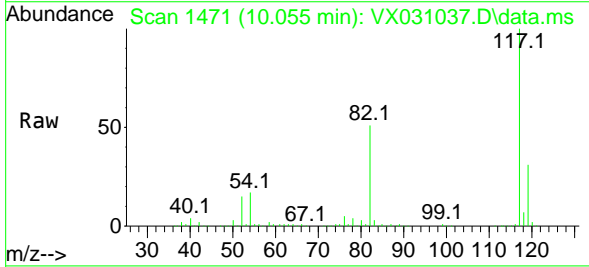


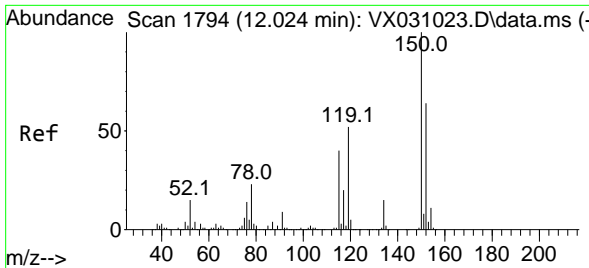
Tgt Ion: 95 Resp: 189351
 Ion Ratio Lower Upper
 95 100
 174 85.3 0.0 149.0
 176 81.7 0.0 146.0



#63
 Chlorobenzene-d5
 Concen: 50.000 ug/l
 RT: 10.055 min Scan# 1471
 Delta R.T. -0.000 min
 Lab File: VX031037.D
 Acq: 01 Sep 2022 22:06

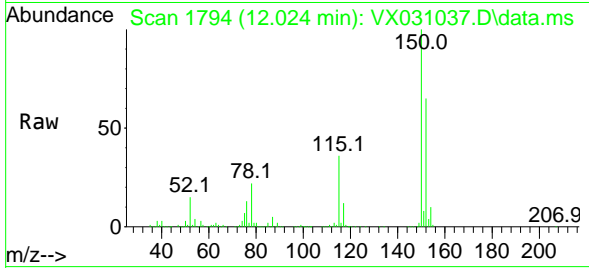
Tgt Ion: 117 Resp: 317192
 Ion Ratio Lower Upper
 117 100
 82 51.2 42.7 64.1
 119 30.6 25.4 38.2



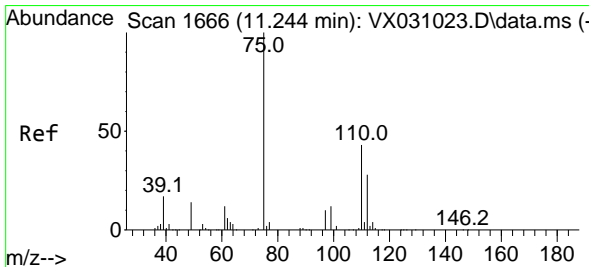
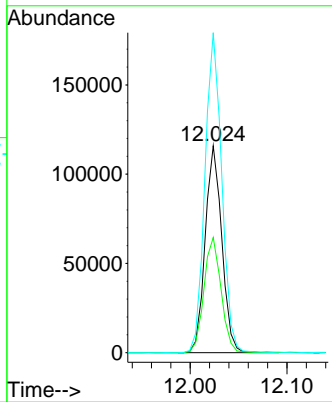
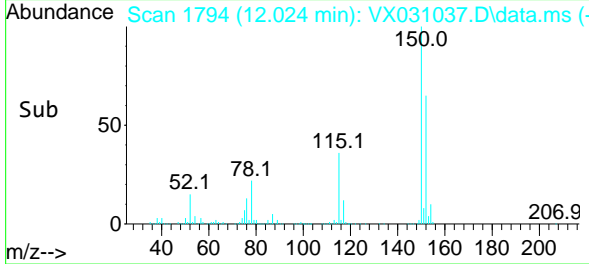


#72
 1,4-Dichlorobenzene-d4
 Concen: 50.000 ug/l
 RT: 12.024 min Scan# 11
 Delta R.T. -0.000 min
 Lab File: VX031037.D
 Acq: 01 Sep 2022 22:06

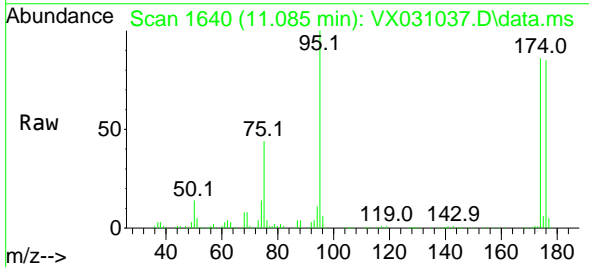
Instrument : MSVOA_X
 ClientSampleId : RW9-MW01D3-20220821



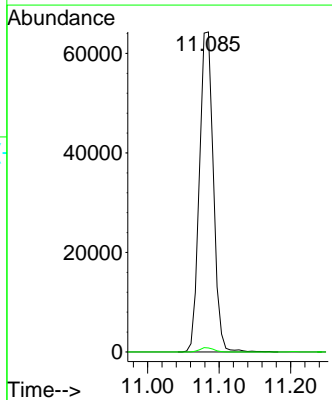
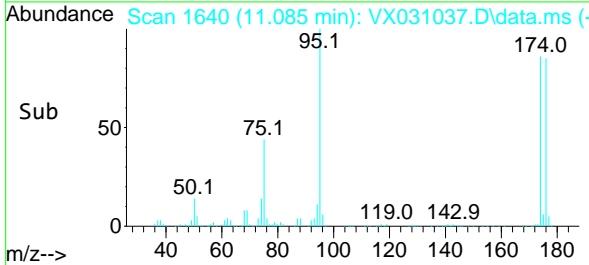
Tgt Ion:152 Resp: 138723
 Ion Ratio Lower Upper
 152 100
 115 57.5 40.5 121.5
 150 156.3 0.0 347.0

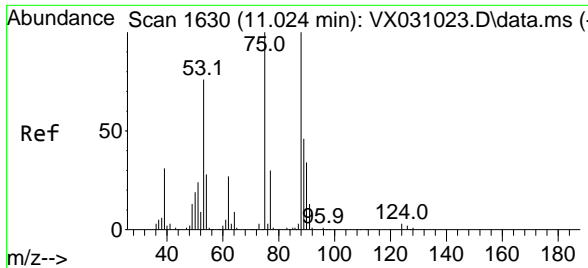


#76
 1,2,3-Trichloropropane
 Concen: 26.629 ug/l
 RT: 11.085 min Scan# 1640
 Delta R.T. -0.159 min
 Lab File: VX031037.D
 Acq: 01 Sep 2022 22:06



Tgt Ion: 75 Resp: 87326
 Ion Ratio Lower Upper
 75 100
 77 1.3 19.8 59.3#





#81
 trans-1,4-Dichloro-2-butene
 Concen: 83.690 ug/l
 RT: 11.085 min Scan# 10
 Delta R.T. 0.061 min
 Lab File: VX031037.D
 Acq: 01 Sep 2022 22:06

Instrument : MSVOA_X
 ClientSampleId : RW9-MW01D3-20220821

Tgt Ion: 75 Resp: 87326

Ion	Ratio	Lower	Upper
75	100		
53	0.1	74.2	111.4#
89	0.2	34.8	52.2#

