

Data Path : Z:\voasrv\HPCHEM1\MSVOA\_X\Data\VX090122\  
 Data File : VX031047.D  
 Acq On : 02 Sep 2022 02:00  
 Operator : JC/MD  
 Sample : N4298-04  
 Misc : 5.0mL/MSVOA\_X/WATER  
 ALS Vial : 33 Sample Multiplier: 1

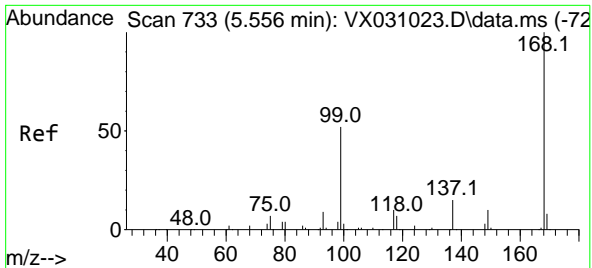
Instrument :  
 MSVOA\_X  
 ClientSampleId :  
 RE120D3-20220822

Quant Time: Sep 02 02:58:21 2022  
 Quant Method : Z:\voasrv\HPCHEM1\MSVOA\_X\Method\82X090122W.M  
 Quant Title : SW846 8260  
 QLast Update : Fri Sep 02 02:49:21 2022  
 Response via : Initial Calibration

Compound	R.T.	QIon	Response	Conc	Units	Dev(Min)
-----						
Internal Standards						
1) Pentafluorobenzene	5.556	168	220747	50.000	ug/l	0.00
34) 1,4-Difluorobenzene	6.763	114	357786	50.000	ug/l	0.00
63) Chlorobenzene-d5	10.055	117	322766	50.000	ug/l	0.00
72) 1,4-Dichlorobenzene-d4	12.024	152	146150	50.000	ug/l	0.00
System Monitoring Compounds						
33) 1,2-Dichloroethane-d4	5.958	65	159745	56.242	ug/l	0.00
Spiked Amount	50.000	Range	74 - 125	Recovery	=	112.480%
35) Dibromofluoromethane	5.391	113	154826	59.298	ug/l	0.00
Spiked Amount	50.000	Range	75 - 124	Recovery	=	118.600%
50) Toluene-d8	8.653	98	557174	57.982	ug/l	0.00
Spiked Amount	50.000	Range	86 - 113	Recovery	=	115.960%#
62) 4-Bromofluorobenzene	11.079	95	195772	57.681	ug/l	0.00
Spiked Amount	50.000	Range	83 - 123	Recovery	=	115.360%
Target Compounds						
						Qvalue
9) 1,1,2-Trichlorotrifluo...	2.331	101	3948	1.487	ug/l	95
12) 1,1-Dichloroethene	2.312	96	578	0.225	ug/l #	53
44) Trichloroethene	7.129	130	123965	37.300	ug/l	96
64) Tetrachloroethene	9.275	164	674	0.209	ug/l #	71
-----						

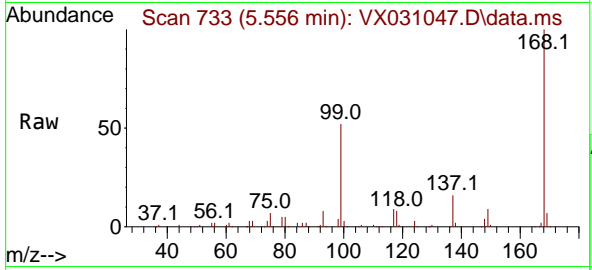
(#) = qualifier out of range (m) = manual integration (+) = signals summed



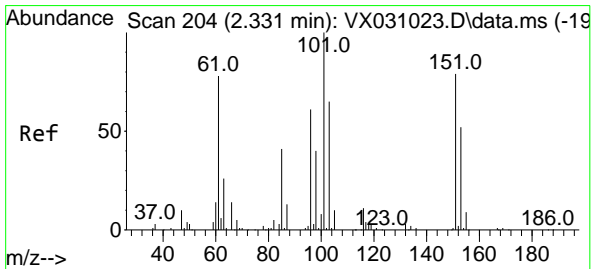
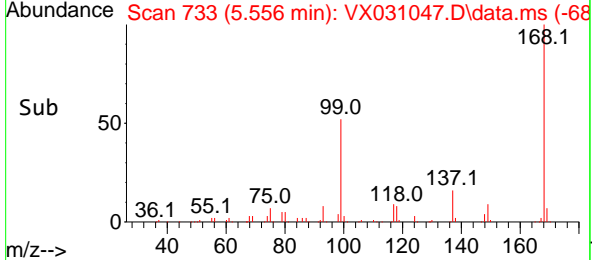
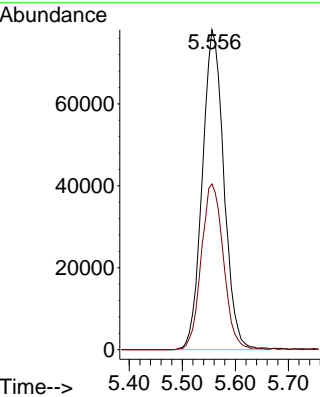


#1  
 Pentafluorobenzene  
 Concen: 50.000 ug/l  
 RT: 5.556 min Scan# 71  
 Delta R.T. -0.000 min  
 Lab File: VX031047.D  
 Acq: 02 Sep 2022 02:00

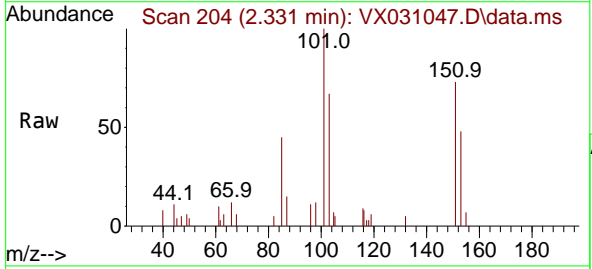
Instrument : MSVOA\_X  
 ClientSampleId : RE120D3-20220822



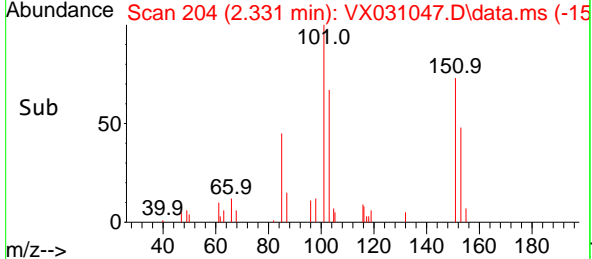
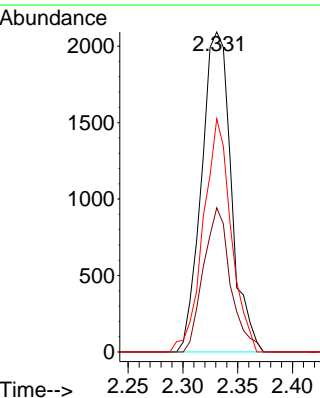
Tgt Ion:168 Resp: 220747  
 Ion Ratio Lower Upper  
 168 100  
 99 51.8 44.0 66.0

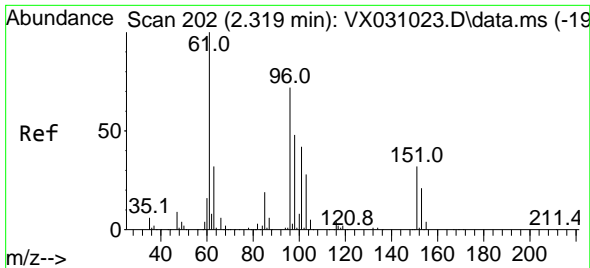


#9  
 1,1,2-Trichlorotrifluoroethane  
 Concen: 1.487 ug/l  
 RT: 2.331 min Scan# 204  
 Delta R.T. 0.006 min  
 Lab File: VX031047.D  
 Acq: 02 Sep 2022 02:00



Tgt Ion:101 Resp: 3948  
 Ion Ratio Lower Upper  
 101 100  
 85 41.2 34.0 51.0  
 151 68.1 59.4 89.0



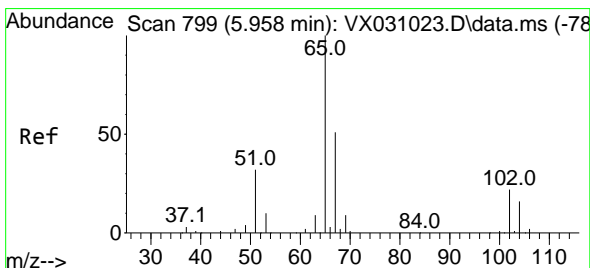
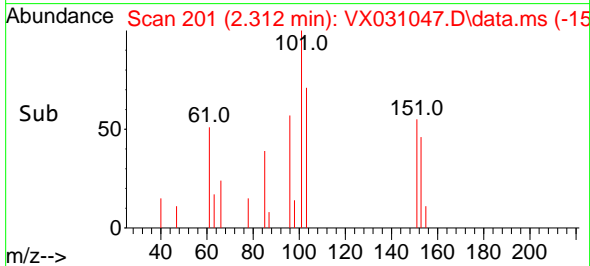
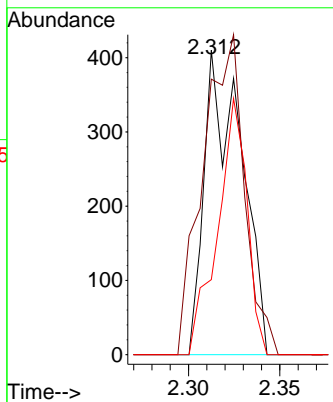
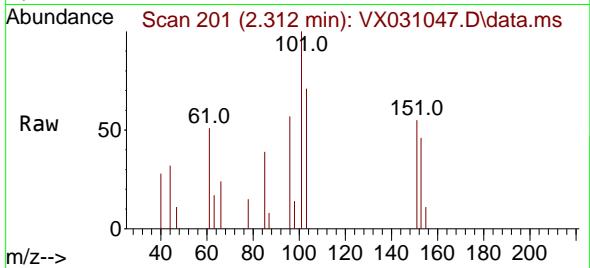


#12  
 1,1-Dichloroethene  
 Concen: 0.225 ug/l  
 RT: 2.312 min Scan# 201  
 Delta R.T. -0.007 min  
 Lab File: VX031047.D  
 Acq: 02 Sep 2022 02:00

Instrument : MSVOA\_X  
 ClientSampleId : RE120D3-20220822

Tgt Ion: 96 Resp: 578

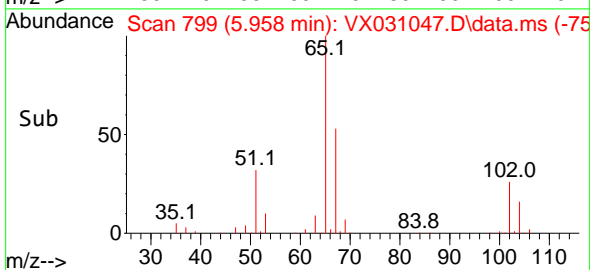
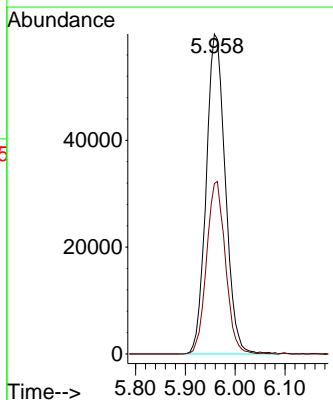
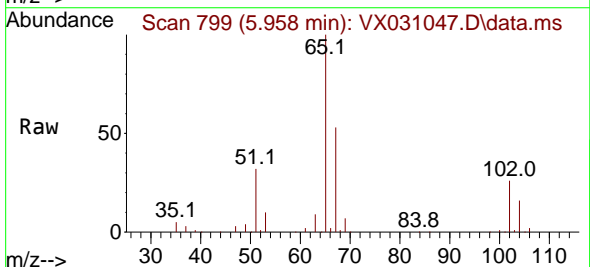
Ion	Ratio	Lower	Upper
96	100		
61	90.5	117.4	176.0#
98	24.6	52.2	78.4#

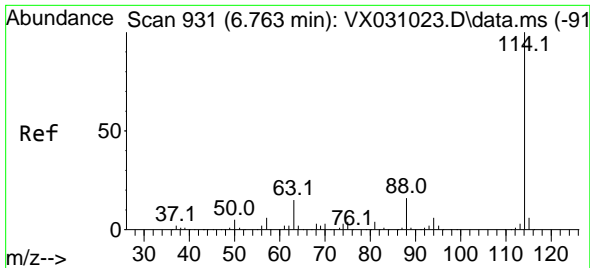


#33  
 1,2-Dichloroethane-d4  
 Concen: 56.242 ug/l  
 RT: 5.958 min Scan# 799  
 Delta R.T. 0.000 min  
 Lab File: VX031047.D  
 Acq: 02 Sep 2022 02:00

Tgt Ion: 65 Resp: 159745

Ion	Ratio	Lower	Upper
65	100		
67	53.1	0.0	109.6



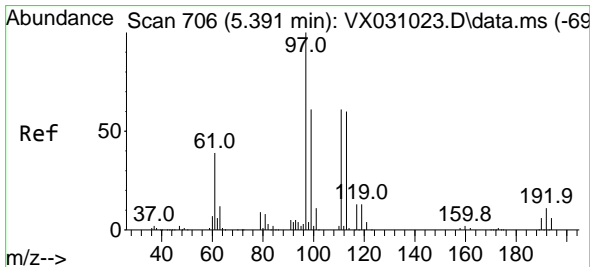
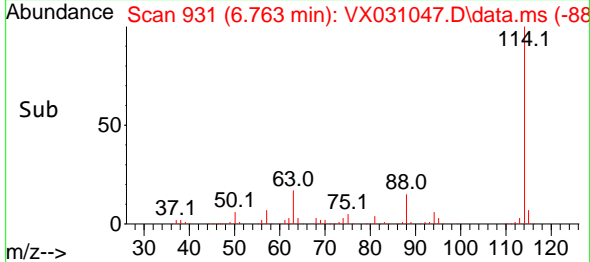
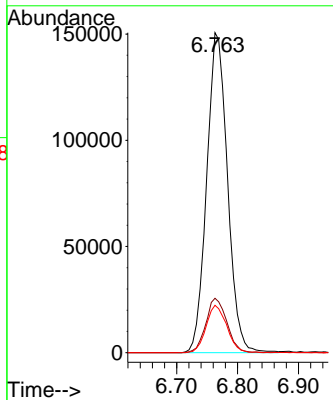
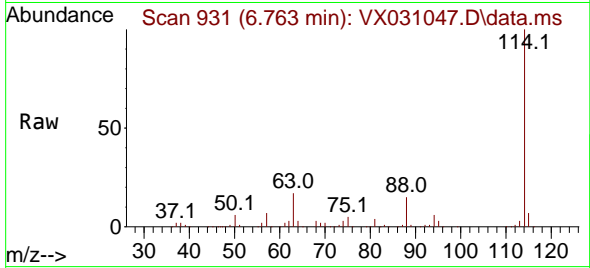


#34  
 1,4-Difluorobenzene  
 Concen: 50.000 ug/l  
 RT: 6.763 min Scan# 91  
 Delta R.T. -0.006 min  
 Lab File: VX031047.D  
 Acq: 02 Sep 2022 02:00

Instrument :  
 MSVOA\_X  
 ClientSampleId :  
 RE120D3-20220822

Tgt Ion:114 Resp: 357786

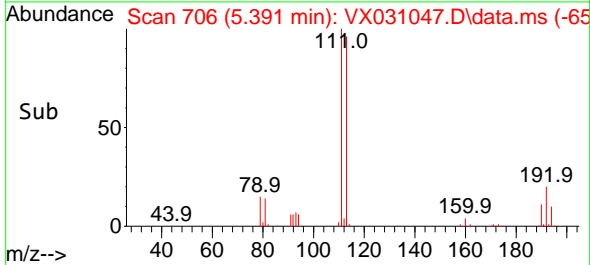
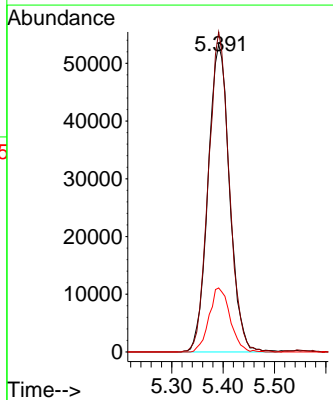
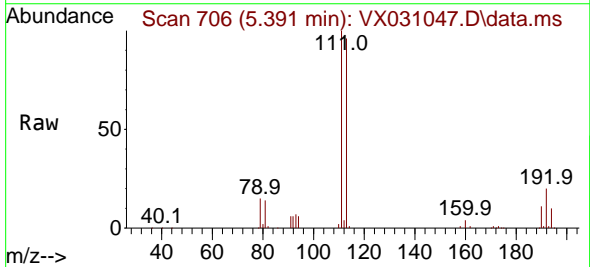
Ion	Ratio	Lower	Upper
114	100		
63	17.0	0.0	38.4
88	14.8	0.0	31.8

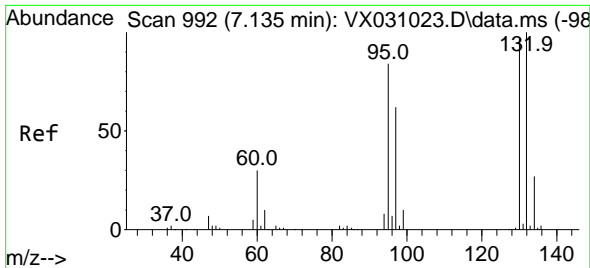


#35  
 Dibromofluoromethane  
 Concen: 59.298 ug/l  
 RT: 5.391 min Scan# 706  
 Delta R.T. 0.000 min  
 Lab File: VX031047.D  
 Acq: 02 Sep 2022 02:00

Tgt Ion:113 Resp: 154826

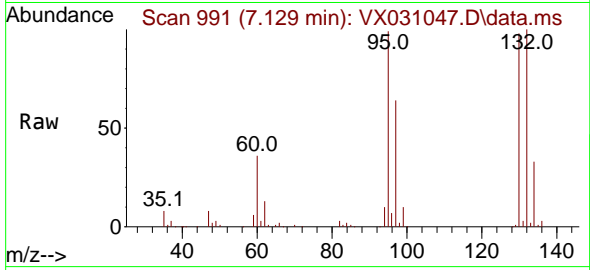
Ion	Ratio	Lower	Upper
113	100		
111	100.7	83.2	124.8
192	20.3	14.8	22.2



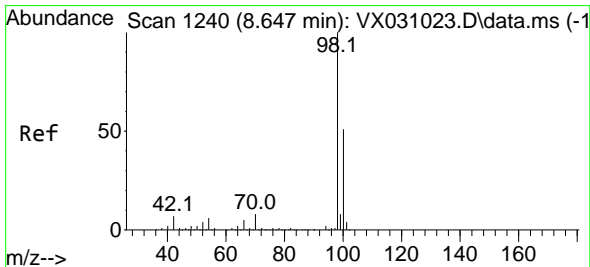
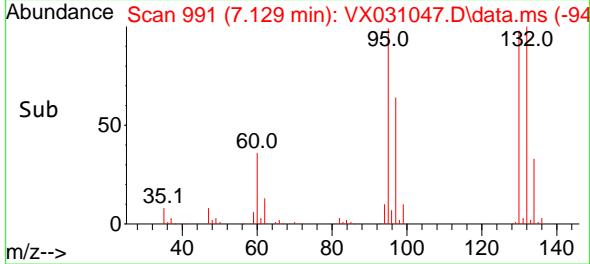
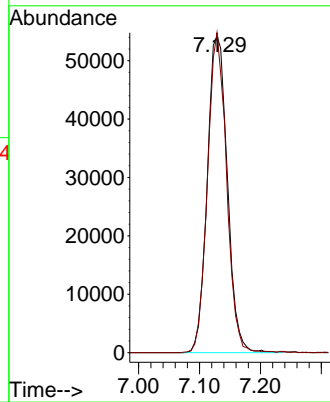


#44  
 Trichloroethene  
 Concen: 37.300 ug/l  
 RT: 7.129 min Scan# 94  
 Delta R.T. -0.000 min  
 Lab File: VX031047.D  
 Acq: 02 Sep 2022 02:00

Instrument :  
 MSVOA\_X  
 ClientSampleId :  
 RE120D3-20220822

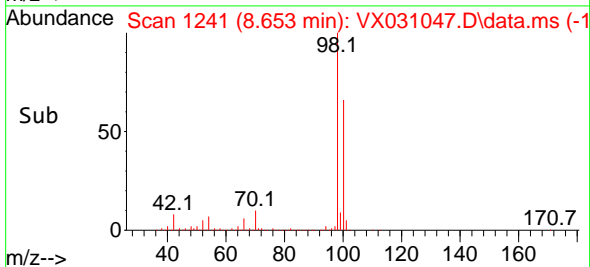
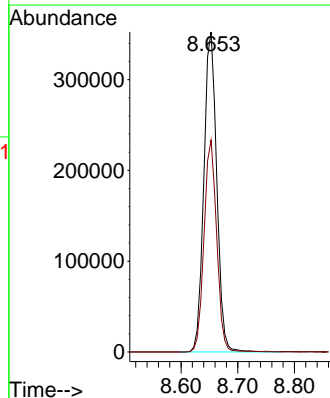
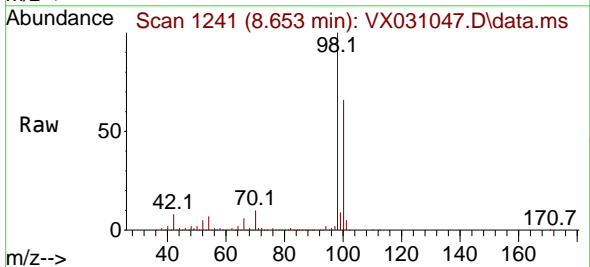


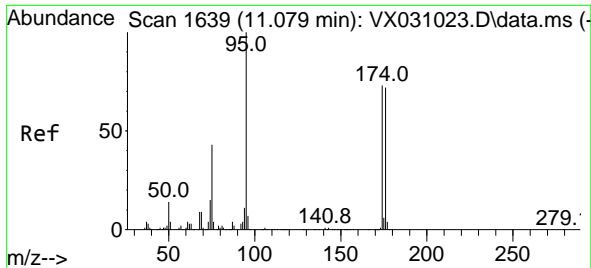
Tgt Ion:130 Resp: 123965  
 Ion Ratio Lower Upper  
 130 100  
 95 101.1 0.0 194.8



#50  
 Toluene-d8  
 Concen: 57.982 ug/l  
 RT: 8.653 min Scan# 1241  
 Delta R.T. -0.000 min  
 Lab File: VX031047.D  
 Acq: 02 Sep 2022 02:00

Tgt Ion: 98 Resp: 557174  
 Ion Ratio Lower Upper  
 98 100  
 100 65.1 52.3 78.5



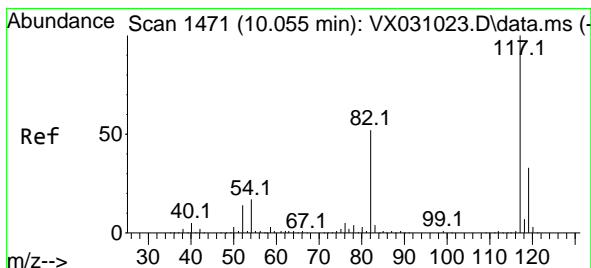
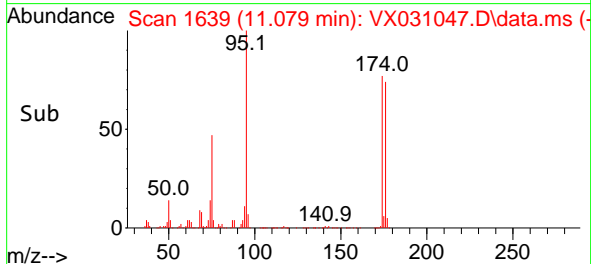
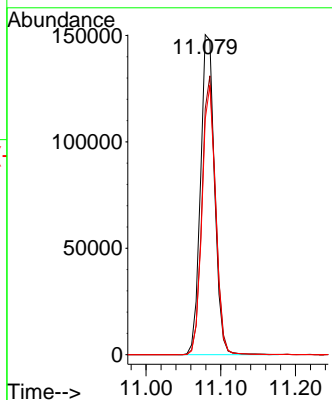
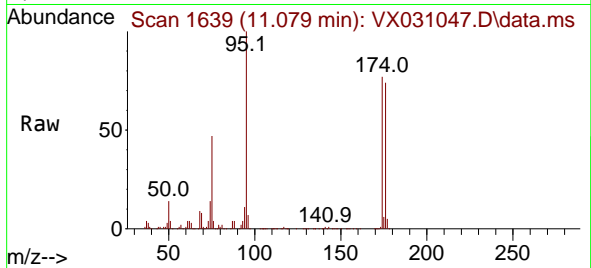


#62  
 4-Bromofluorobenzene  
 Concen: 57.681 ug/l  
 RT: 11.079 min Scan# 1639  
 Delta R.T. -0.006 min  
 Lab File: VX031047.D  
 Acq: 02 Sep 2022 02:00

Instrument : MSVOA\_X  
 ClientSampleId : RE120D3-20220822

Tgt Ion: 95 Resp: 195772

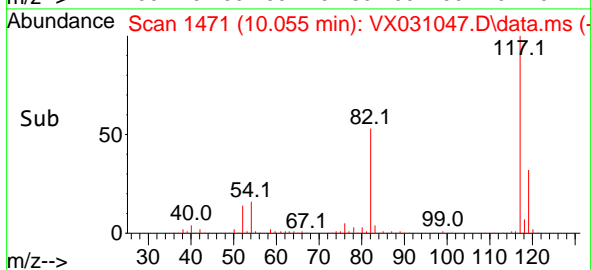
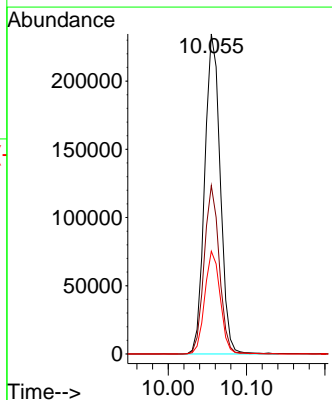
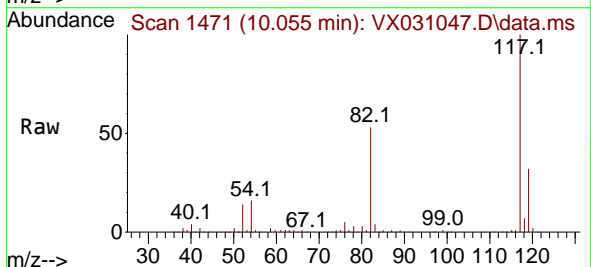
Ion	Ratio	Lower	Upper
95	100		
174	84.8	0.0	149.0
176	81.7	0.0	146.0

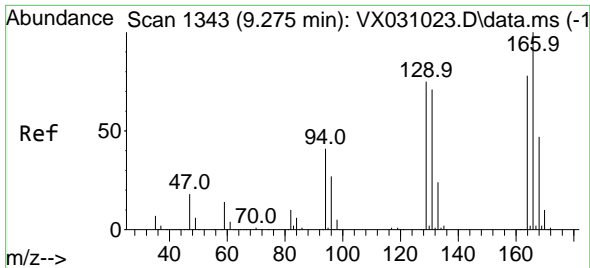


#63  
 Chlorobenzene-d5  
 Concen: 50.000 ug/l  
 RT: 10.055 min Scan# 1471  
 Delta R.T. 0.000 min  
 Lab File: VX031047.D  
 Acq: 02 Sep 2022 02:00

Tgt Ion: 117 Resp: 322766

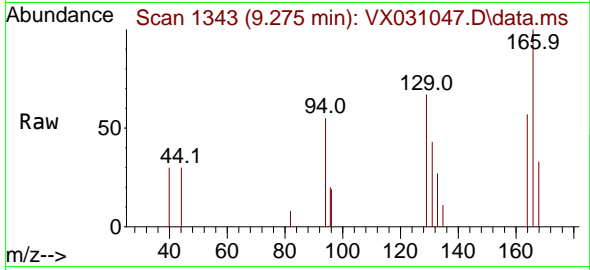
Ion	Ratio	Lower	Upper
117	100		
82	52.6	42.7	64.1
119	32.1	25.4	38.2



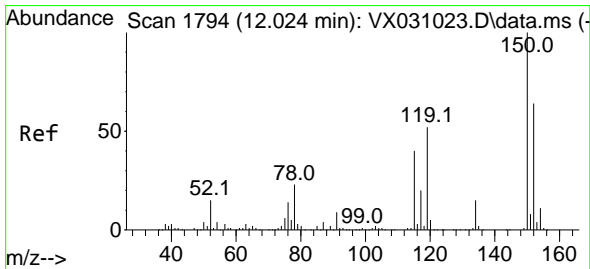
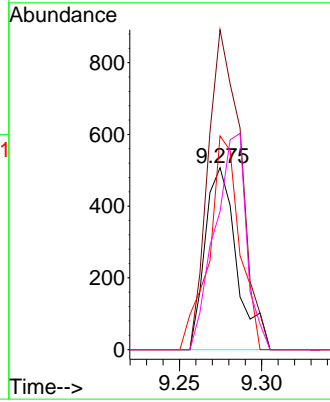
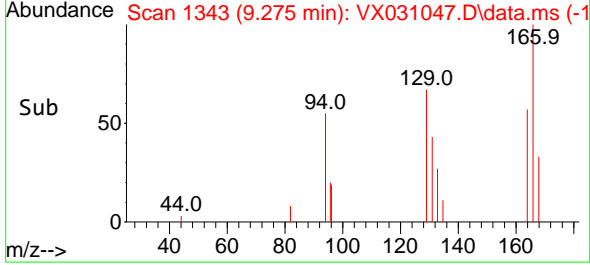


#64  
 Tetrachloroethene  
 Concen: 0.209 ug/l  
 RT: 9.275 min Scan# 11  
 Delta R.T. -0.000 min  
 Lab File: VX031047.D  
 Acq: 02 Sep 2022 02:00

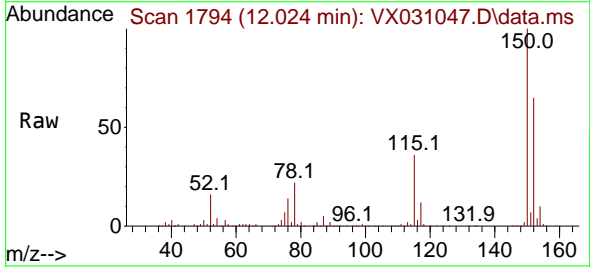
Instrument : MSVOA\_X  
 ClientSampleId : RE120D3-20220822



Tgt Ion:164 Resp: 674  
 Ion Ratio Lower Upper  
 164 100  
 166 175.9 98.2 147.4#  
 129 117.6 80.8 121.2  
 131 75.9 75.5 113.3



#72  
 1,4-Dichlorobenzene-d4  
 Concen: 50.000 ug/l  
 RT: 12.024 min Scan# 1794  
 Delta R.T. 0.000 min  
 Lab File: VX031047.D  
 Acq: 02 Sep 2022 02:00



Tgt Ion:152 Resp: 146150  
 Ion Ratio Lower Upper  
 152 100  
 115 57.6 40.5 121.5  
 150 158.6 0.0 347.0

