

Data Path : Z:\voasrv\HPCHEM1\MSVOA_X\Data\VX090122\
 Data File : VX031041.D
 Acq On : 01 Sep 2022 23:39
 Operator : JC/MD
 Sample : N4297-12
 Misc : 5.0mL/MSVOA_X/WATER
 ALS Vial : 27 Sample Multiplier: 1

Instrument :
 MSVOA_X
 ClientSampleId :
 RE131D1-20220821

Integration Parameters: RTEINT.P
 Integrator: RTE
 Smoothing : ON Filtering: 5
 Sampling : 1 Min Area: 3 % of largest Peak
 Start Thrs: 0.2 Max Peaks: 100
 Stop Thrs : 0 Peak Location: TOP

If leading or trailing edge < 100 prefer < Baseline drop else tangent >
 Peak separation: 5

Method : Z:\voasrv\HPCHEM1\MSVOA_X\Method\82X090122W.M
 Title : SW846 8260

Signal : TIC: VX031041.D\data.ms

peak #	R.T. min	first scan	max scan	last scan	PK TY	peak height	corr. area	corr. % max.	% of total
1	2.325	195	203	210	rBV4	18484	34988	1.11%	0.368%
2	4.495	549	559	571	rBV2	13844	38176	1.22%	0.401%
3	5.391	694	706	720	rBV3	167772	488479	15.56%	5.135%
4	5.556	720	733	749	rVB2	209228	595515	18.97%	6.261%
5	5.964	788	800	812	rBV	160437	436054	13.89%	4.584%
6	6.763	921	931	949	rBV	306943	737445	23.49%	7.753%
7	7.129	978	991	1009	rBV	1428823	3139081	100.00%	33.001%
8	8.653	1233	1241	1252	rBV	861417	1345349	42.86%	14.144%
9	9.275	1337	1343	1350	rBV	166504	245772	7.83%	2.584%
10	10.055	1465	1471	1483	rBV	700295	888521	28.31%	9.341%
11	11.085	1634	1640	1651	rBV	642427	853076	27.18%	8.968%
12	12.024	1788	1794	1806	rBV	576989	709520	22.60%	7.459%

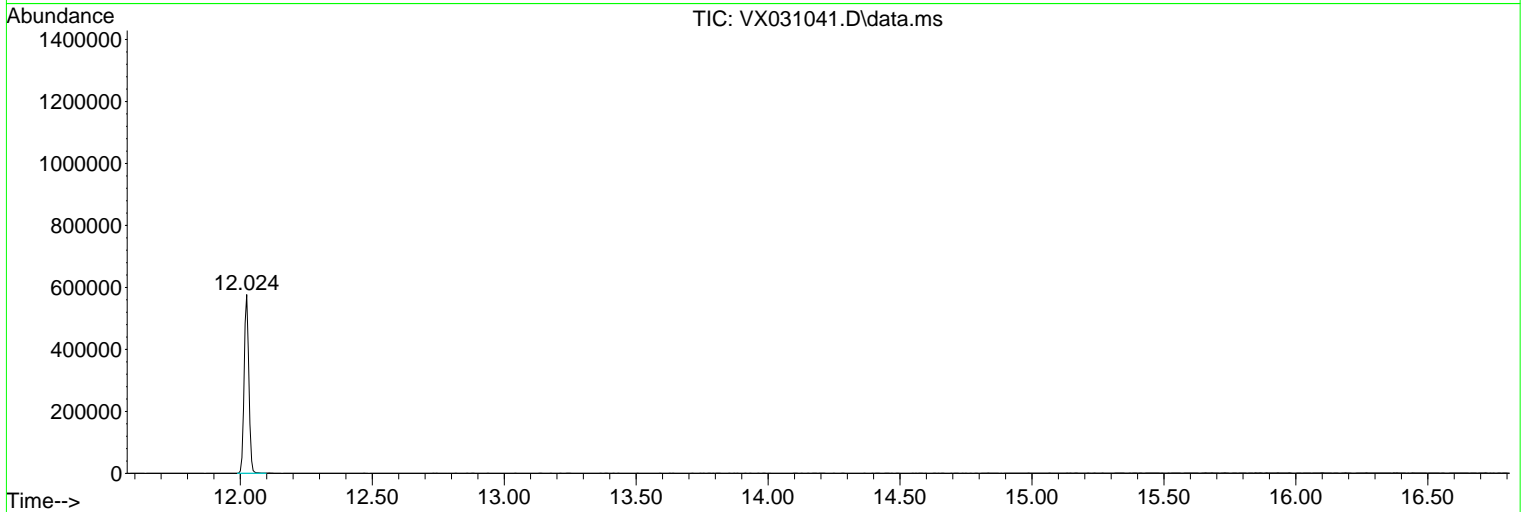
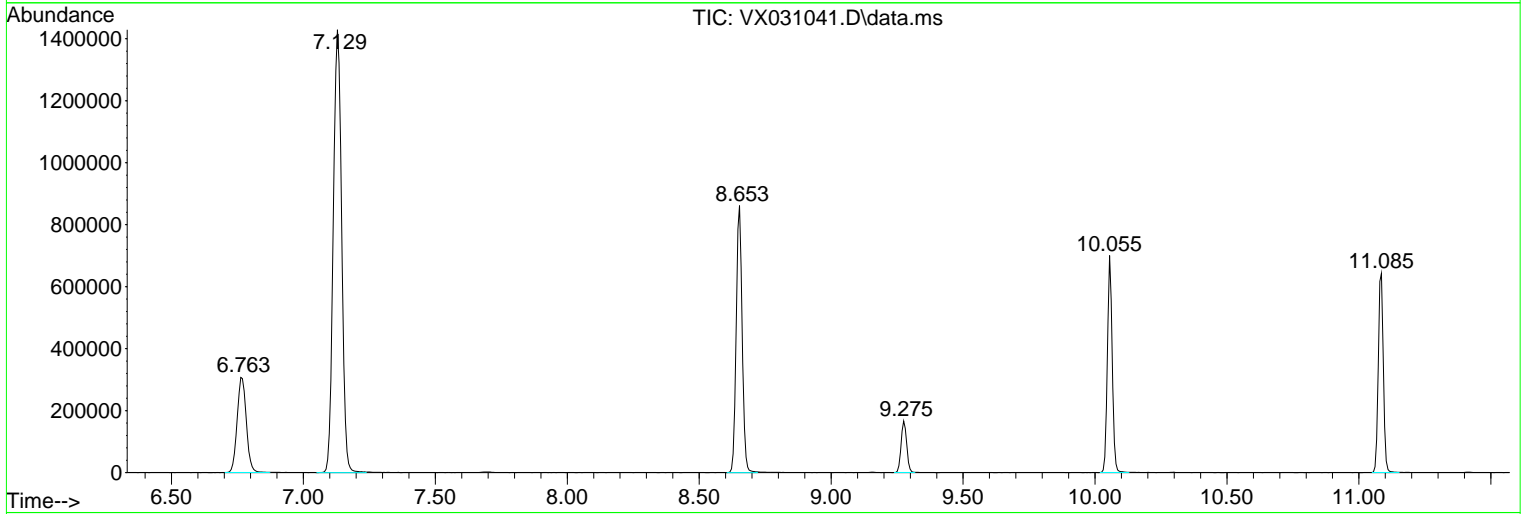
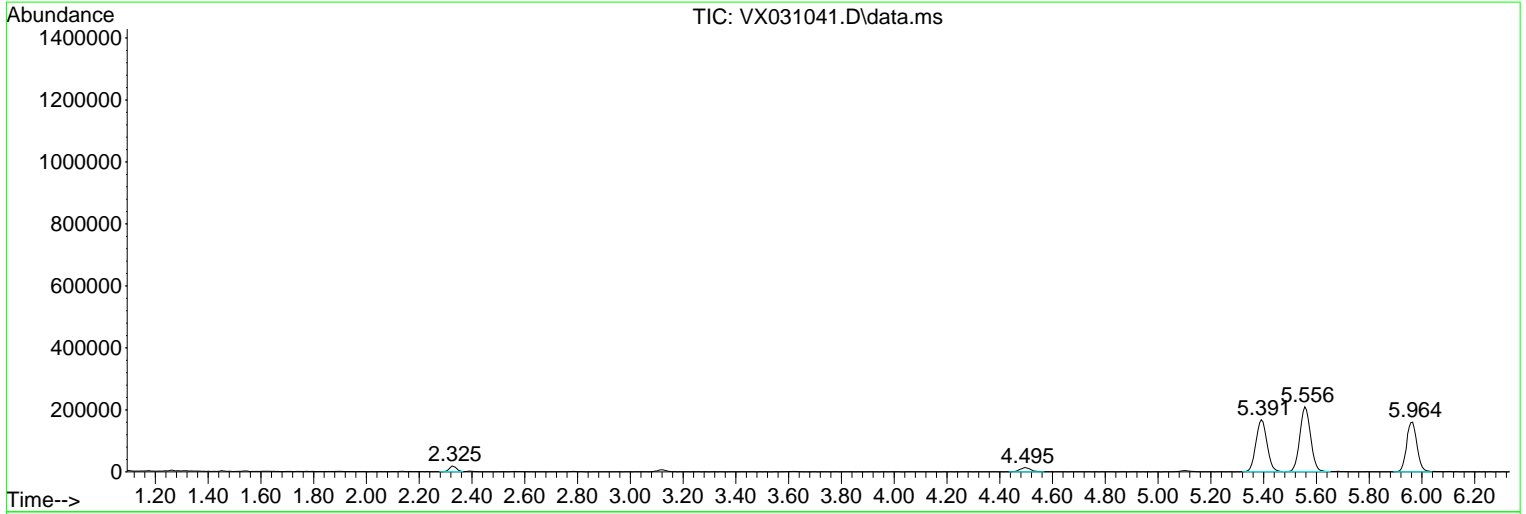
Sum of corrected areas: 9511976

Data Path : Z:\voasrv\HPCHEM1\MSVOA_X\Data\VX090122\
 Data File : VX031041.D
 Acq On : 01 Sep 2022 23:39
 Operator : JC/MD
 Sample : N4297-12
 Misc : 5.0mL/MSVOA_X/WATER
 ALS Vial : 27 Sample Multiplier: 1

Instrument :
 MSVOA_X
 ClientSampleId :
 RE131D1-20220821

Quant Method : Z:\voasrv\HPCHEM1\MSVOA_X\Method\82X090122W.M
 Quant Title : SW846 8260

TIC Library : C:\Database\NIST20.L
 TIC Integration Parameters: LSCINT.P



Library Search Compound Report

Data Path : Z:\voasrv\HPCHEM1\MSVOA_X\Data\VX090122\
Data File : VX031041.D
Acq On : 01 Sep 2022 23:39
Operator : JC/MD
Sample : N4297-12
Misc : 5.0mL/MSVOA_X/WATER
ALS Vial : 27 Sample Multiplier: 1

Instrument :
MSVOA_X
ClientSampleId :
RE131D1-20220821

Quant Method : Z:\voasrv\HPCHEM1\MSVOA_X\Method\82X090122W.M
Quant Title : SW846 8260

TIC Library : C:\Database\NIST20.L
TIC Integration Parameters: LSCINT.P

No Library Search Compounds Detected

Data Path : Z:\voasrv\HPCHEM1\MSVOA_X\Data\VX090122\
Data File : VX031041.D
Acq On : 01 Sep 2022 23:39
Operator : JC/MD
Sample : N4297-12
Misc : 5.0mL/MSVOA_X/WATER
ALS Vial : 27 Sample Multiplier: 1

Instrument :
MSVOA_X
ClientSampleId :
RE131D1-20220821

Quant Method : Z:\voasrv\HPCHEM1\MSVOA_X\Method\82X090122W.M
Quant Title : SW846 8260

TIC Library : C:\Database\NIST20.L
TIC Integration Parameters: LSCINT.P

TIC Top Hit name	RT	EstConc	Units	Response	--Internal Standard--		
					#	RT	Resp Conc
