

Data Path : Z:\VOASRV\HPCHEM1\MSVOA X\DATA\VX090220\  
 Data File : VX018219.D  
 Acq On : 02 Sep 2020 16:34  
 Operator : JC/SP  
 Sample : MDL07  
 Misc : 5.0mL/MSVOA X/WATER  
 ALS Vial : 17 Sample Multiplier: 1

Instrument :  
 MSVOA\_X  
 ClientSampled :  
 MDL07

Manual Integrations  
 APPROVED

MMDadoda  
 9/3/2020 9:54:17 AM

Quant Time: Sep 03 05:58:29 2020  
 Quant Method : Z:\VOASRV\HPCHEM1\MSVOA\_X\METHOD\SOMXML090220WMA.M  
 Quant Title : VOC Analysis  
 QLast Update : Thu Sep 03 04:54:32 2020  
 Response via : Initial Calibration

Internal Standards	R.T.	QIon	Response	Conc	Units	Dev(Min)
1) 1,4-Difluorobenzene	6.84	114	662597	50.00	ug/L	0.00
28) Chlorobenzene-d5	10.10	117	634834	50.00	ug/L	0.00
60) 1,4-Dichlorobenzene-d4	12.06	152	295769	50.00	ug/L	0.00

## System Monitoring Compounds

4) Vinyl Chloride-d3	1.39	65	238995	44.70	ug/L	0.00
Spiked Amount	50.000	Range	60 - 135	Recovery	=	89.40%
7) Chloroethane-d5	1.70	69	186391	46.34	ug/L	0.00
Spiked Amount	50.000	Range	70 - 130	Recovery	=	92.68%
11) 1,1-Dichloroethene-d2	2.34	63	379278	36.91	ug/L	0.00
Spiked Amount	50.000	Range	60 - 125	Recovery	=	73.82%
21) 2-Butanone-d5	4.54	46	355890	96.15	ug/L	0.00
Spiked Amount	100.000	Range	40 - 130	Recovery	=	96.15%
24) Chloroform-d	5.14	84	465369	47.77	ug/L	0.00
Spiked Amount	50.000	Range	70 - 125	Recovery	=	95.54%
26) 1,2-Dichloroethane-d4	6.03	65	340741	46.83	ug/L	0.00
Spiked Amount	50.000	Range	70 - 125	Recovery	=	93.66%
32) Benzene-d6	6.05	84	929439	49.29	ug/L	0.00
Spiked Amount	50.000	Range	70 - 125	Recovery	=	98.58%
36) 1,2-Dichloropropane-d6	7.37	67	297812	50.23	ug/L	0.00
Spiked Amount	50.000	Range	70 - 120	Recovery	=	100.46%
41) Toluene-d8	8.70	98	850607	46.49	ug/L	0.00
Spiked Amount	50.000	Range	80 - 120	Recovery	=	92.98%
43) trans-1,3-Dichloropropene-	8.99	79	160713	48.60	ug/L	0.00
Spiked Amount	50.000	Range	60 - 125	Recovery	=	97.20%
47) 2-Hexanone-d5	9.43	63	261756	99.64	ug/L	0.00
Spiked Amount	100.000	Range	45 - 130	Recovery	=	99.64%
57) 1,1,2,2-Tetrachloroethane-	11.23	84	386493	48.35	ug/L	0.00
Spiked Amount	50.000	Range	65 - 120	Recovery	=	96.70%
64) 1,2-Dichlorobenzene-d4	12.36	152	322402	50.18	ug/L	0.00
Spiked Amount	50.000	Range	80 - 120	Recovery	=	100.36%

## Target Compounds

Target Compounds	R.T.	QIon	Response	Conc	Units	Ovalue
2) Dichlorodifluoromethane	1.18	85	11509	2.042	ug/L	96
3) Chloromethane	1.31	50	10994	2.129	ug/L	99
5) Vinyl chloride	1.39	62	11279m	2.197	ug/L	
6) Bromomethane	1.64	94	6730	2.292	ug/L	94
8) Chloroethane	1.72	64	6574	2.178	ug/L	95
9) Trichlorofluoromethane	1.92	101	18100	2.124	ug/L	99
10) 1,1,2-Trichloro-1,2,2-trif	2.37	101	12605	2.721	ug/L #	81
12) 1,1-Dichloroethene	2.36	96	11855m	2.719	ug/L	
13) Acetone	2.43	43	10157	4.814	ug/L	85
14) Carbon disulfide	2.55	76	28857	2.090	ug/L	98
15) Methyl Acetate	2.75	43	9670	1.865	ug/L #	80
16) Methylene chloride	2.84	84	13353	2.702	ug/L	91
17) trans-1,2-Dichloroethene	3.15	96	8997	1.925	ug/L	95
18) Methyl tert-butyl Ether	3.17	73	28581	1.958	ug/L	98
19) 1,1-Dichloroethane	3.68	63	16796	1.917	ug/L #	96
20) cis-1,2-Dichloroethene	4.56	96	11195	2.240	ug/L #	97
22) 2-Butanone	4.65	43	16244	4.695	ug/L	79

Data Path : Z:\VOASRV\HPCHEM1\MSVOA X\DATA\ VX090220\  
 Data File : VX018219.D  
 Acq On : 02 Sep 2020 16:34  
 Operator : JC/SP  
 Sample : MDL07  
 Misc : 5.0mL/MSVOA X/WATER  
 ALS Vial : 17 Sample Multiplier: 1

**Instrument :**  
 MSVOA\_X  
**Client Sampled :**  
 MDL07

**Manual Integrations**  
**APPROVED**  
 MMDadoda  
 9/3/2020 9:54:17 AM

Quant Time: Sep 03 05:58:29 2020  
 Quant Method : Z:\VOASRV\HPCHEM1\MSVOA\_X\METHOD\SOMXMLM090220WMA.M  
 Quant Title : VOC Analysis  
 QLast Update : Thu Sep 03 04:54:32 2020  
 Response via : Initial Calibration

Internal Standards	R.T.	QIon	Response	Conc	Units	Dev(Min)
23) Bromochloromethane	5.00	128	6130	2.192	ug/L	83
25) Chloroform	5.18	83	45027	4.492	ug/L	93
27) 1,2-Dichloroethane	6.17	62	16861m	2.220	ug/L	
29) Cyclohexane	5.56	56	13761m	1.970	ug/L	
30) 1,1,1-Trichloroethane	5.47	97	17640	2.023	ug/L #	87
31) Carbon tetrachloride	5.76	117	16932	2.133	ug/L	99
33) Benzene	6.12	78	37719	2.054	ug/L	100
34) Trichloroethene	7.20	95	11734	2.276	ug/L	86
35) Methylcyclohexane	7.45	83	13847	1.932	ug/L #	71
37) 1,2-Dichloropropane	7.49	63	9763	2.007	ug/L #	97
38) Bromodichloromethane	7.88	83	14453	2.086	ug/L	93
39) cis-1,3-Dichloropropene	8.42	75	16898	2.228	ug/L	98
40) 4-Methyl-2-pentanone	8.62	43	23747	3.601	ug/L	98
42) Toluene	8.76	91	41025	2.081	ug/L	99
44) trans-1,3-Dichloropropene	9.02	75	15698	1.967	ug/L	95
45) 1,1,2-Trichloroethane	9.20	97	10165	2.082	ug/L	95
46) Tetrachloroethene	9.32	164	8613	2.096	ug/L	84
48) 2-Hexanone	9.48	43	20057	3.762	ug/L	95
49) Dibromochloromethane	9.57	129	11805	1.973	ug/L	96
50) 1,2-Dibromoethane	9.65	107	11080	2.143	ug/L	83
51) Chlorobenzene	10.12	112	27125	2.020	ug/L	96
52) Ethylbenzene	10.24	91	40175	1.828	ug/L	95
53) m,p-Xylene	10.34	106	14606	1.740	ug/L	88
54) o-xylene	10.68	106	14046	1.753	ug/L	98
55) Styrene	10.70	104	22020	1.591	ug/L	84
56) Isopropylbenzene	11.01	105	35021	1.634	ug/L	98
58) 1,1,2,2-Tetrachloroethane	11.25	83	15942	2.223	ug/L #	81
59) 1,2,3-Trichloropropane	11.28	75	12662	2.038	ug/L	98
61) Bromoform	10.84	173	8057	1.921	ug/L #	96
62) 1,3-Dichlorobenzene	12.01	146	19037	1.960	ug/L	88
63) 1,4-Dichlorobenzene	12.08	146	19554	1.977	ug/L	95
65) 1,2-Dichlorobenzene	12.38	146	20781	2.221	ug/L	92
66) 1,2-Dibromo-3-chloropropan	12.98	75	4010	2.291	ug/L #	68
67) 1,3,5-Trichlorobenzene	13.15	180	12718	2.006	ug/L	93
68) 1,2,4-trichlorobenzene	13.63	180	11499	1.966	ug/L	98
69) Naphthalene	13.82	128	30738	1.662	ug/L	95
70) 1,2,3-Trichlorobenzene	14.00	180	11463	1.959	ug/L	93

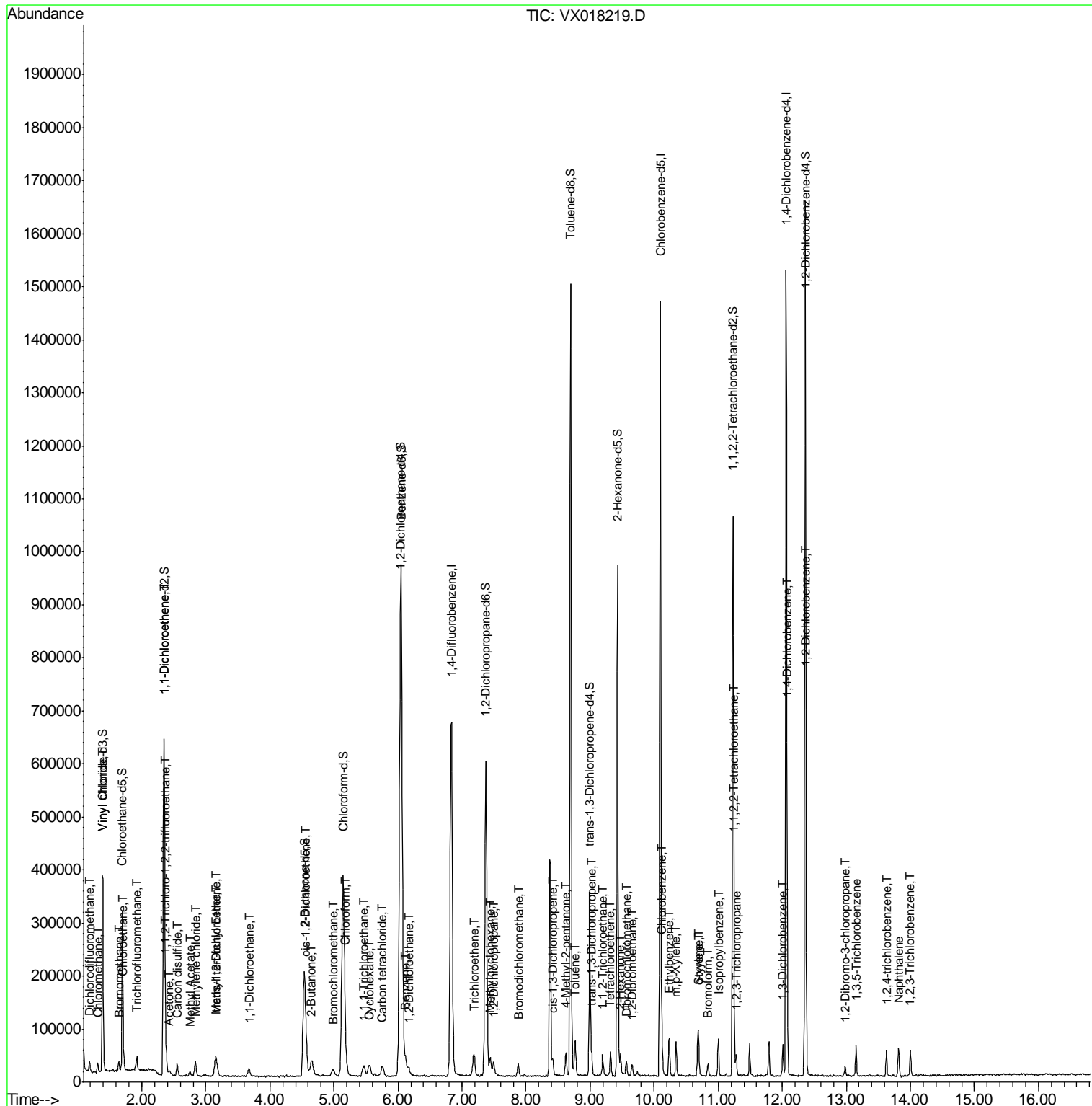
(#) = qualifier out of range (m) = manual integration (+) = signals summed

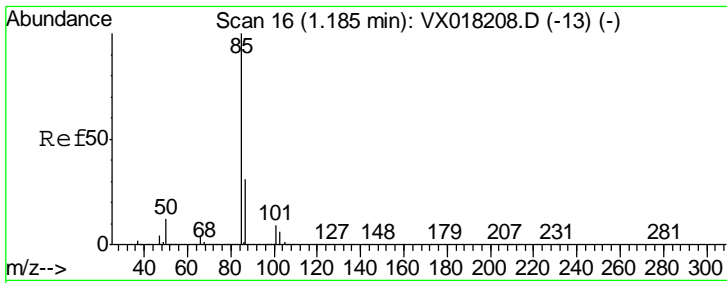
Data Path : Z:\VOASRV\HPCHEM1\MSVOA X\DATA\VX090220\  
 Data File : VX018219.D  
 Acq On : 02 Sep 2020 16:34  
 Operator : JC/SP  
 Sample : MDL07  
 Misc : 5.0mL/MSVOA X/WATER  
 ALS Vial : 17 Sample Multiplier: 1

Instrument :  
 MSVOA\_X  
 Client Sampled :  
 MDL07

Manual Integrations  
 APPROVED  
 MMDadoda  
 9/3/2020 9:54:17 AM

Quant Time: Sep 03 05:58:29 2020  
 Quant Method : Z:\VOASRV\HPCHEM1\MSVOA\_X\METHOD\SOMXLM090220WMA.M  
 Quant Title : VOC Analysis  
 QLast Update : Thu Sep 03 04:54:32 2020  
 Response via : Initial Calibration





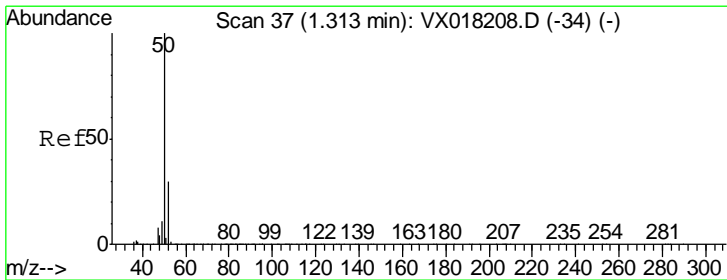
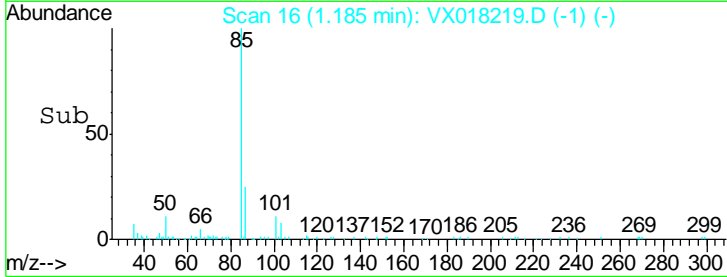
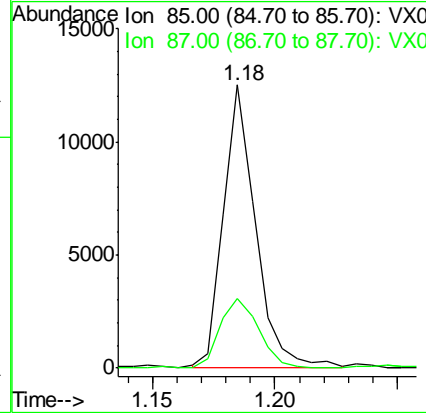
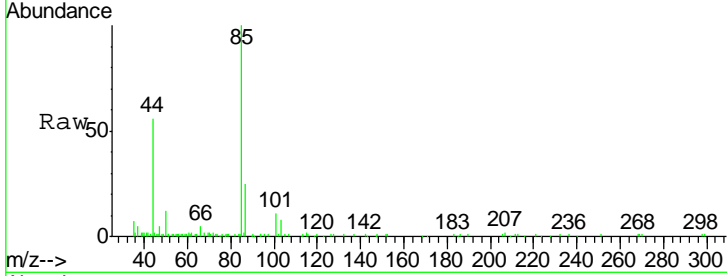
#2  
 Dichlorodifluoromethane  
 Concen: 2.042 ug/L  
 RT: 1.18 min Scan# 16  
 Delta R.T. 0.00 min  
 Lab File: VX018219.D  
 Acq: 02 Sep 2020 16:34

Instrument : MSVOA\_X  
 ClientSampled : MDL07

Tgt Ion	Resp	Lower	Upper
85	11509		
87	29.4	25.2	37.8

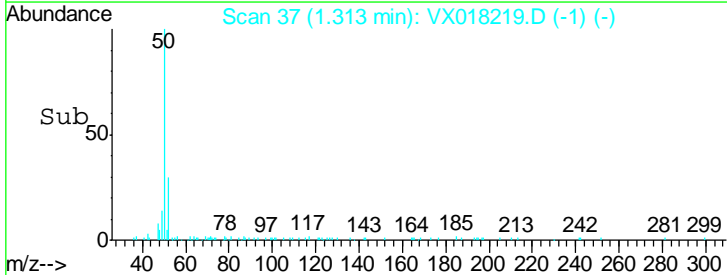
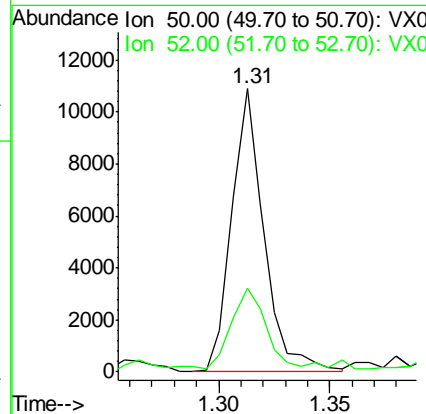
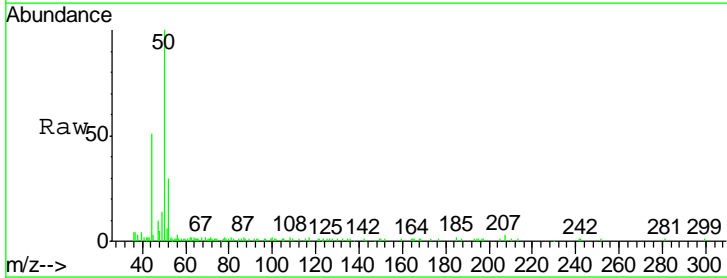
Manual Integrations  
 APPROVED

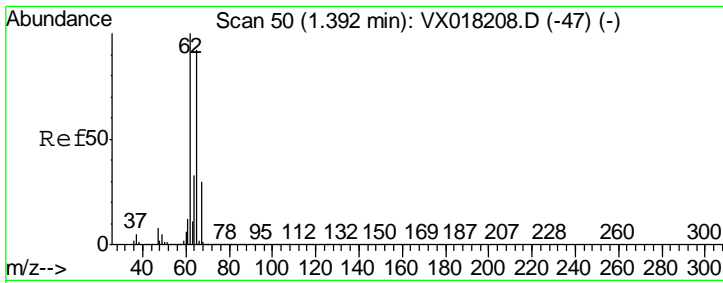
MMDadoda  
 9/3/2020 9:54:17 AM



#3  
 Chloromethane  
 Concen: 2.129 ug/L  
 RT: 1.31 min Scan# 37  
 Delta R.T. 0.00 min  
 Lab File: VX018219.D  
 Acq: 02 Sep 2020 16:34

Tgt Ion	Resp	Lower	Upper
50	10994		
52	29.5	21.0	39.0





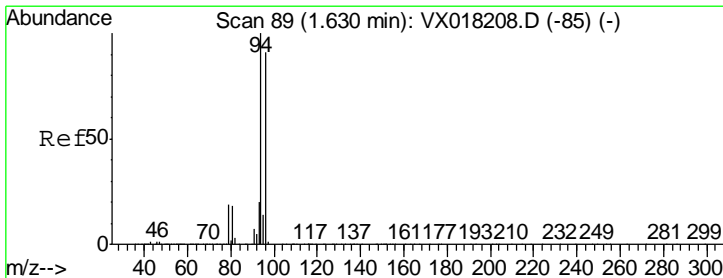
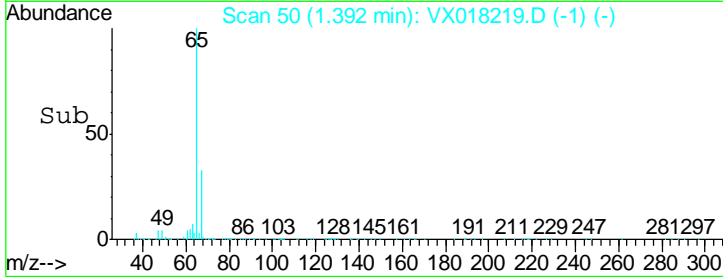
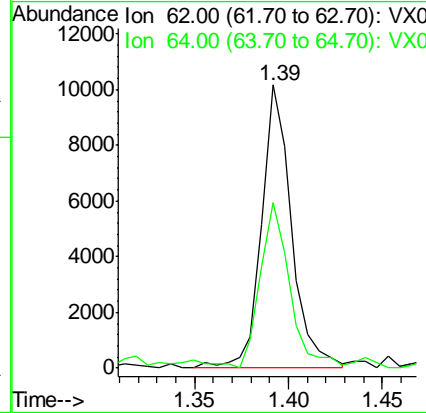
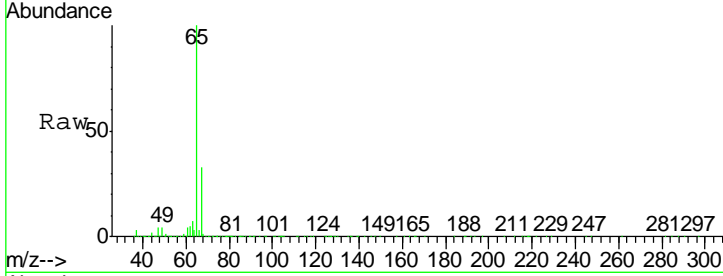
#5  
 Vinyl chloride  
 Concen: 2.197 ug/L m  
 RT: 1.39 min Scan# 50  
 Delta R.T. 0.00 min  
 Lab File: VX018219.D  
 Acq: 02 Sep 2020 16:34

Instrument :  
 MSVOA\_X  
 ClientSampled :  
 MDL07

Tgt Ion	Resp	Lower	Upper
62	11279		
62	100		
64	58.7	23.2	43.2#

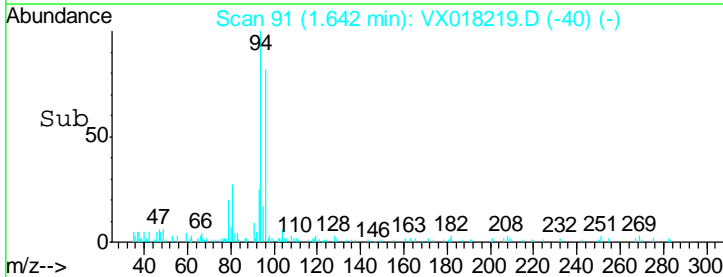
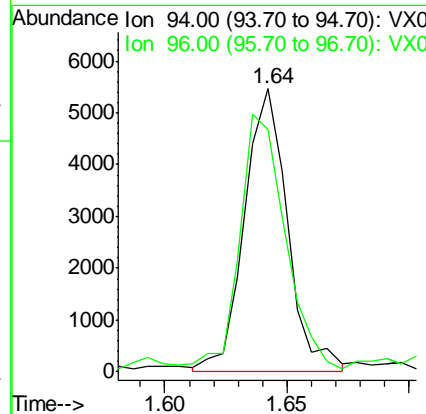
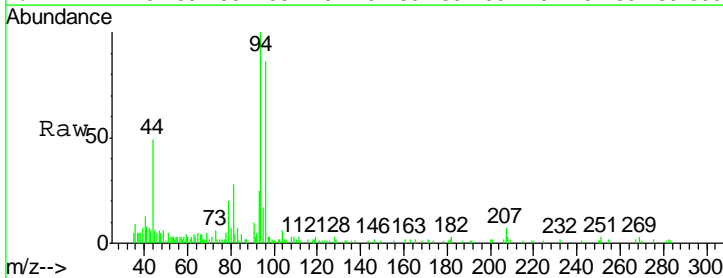
Manual Integrations  
 APPROVED

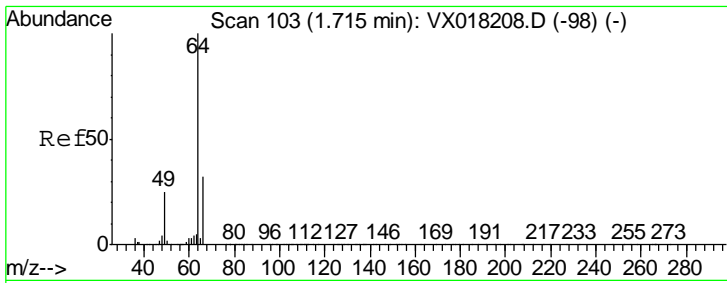
MMDadoda  
 9/3/2020 9:54:17 AM



#6  
 Bromomethane  
 Concen: 2.292 ug/L  
 RT: 1.64 min Scan# 91  
 Delta R.T. 0.01 min  
 Lab File: VX018219.D  
 Acq: 02 Sep 2020 16:34

Tgt Ion	Resp	Lower	Upper
94	6730		
94	100		
96	85.7	63.9	118.7



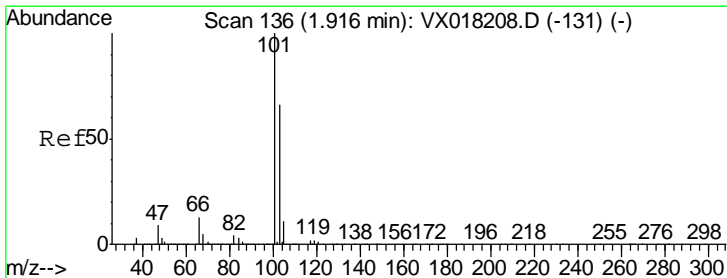
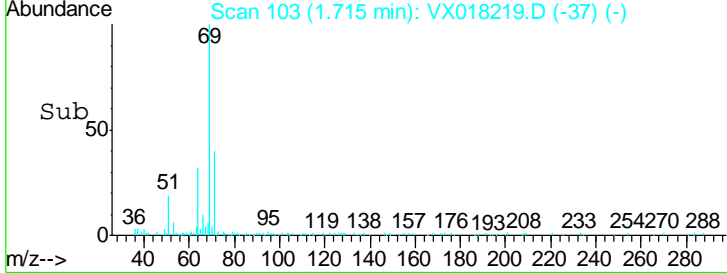
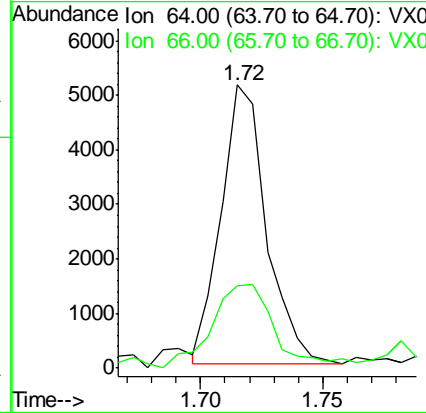
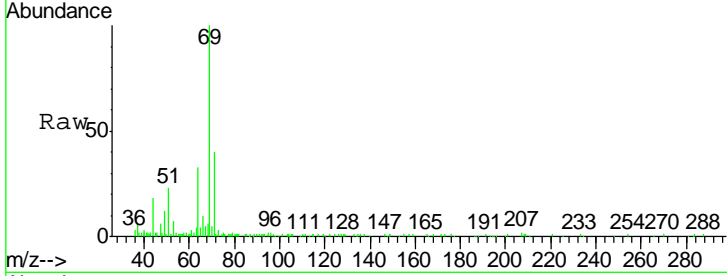


#8  
 Chloroethane  
 Concen: 2.178 ug/L  
 RT: 1.72 min Scan# 103  
 Delta R.T. 0.00 min  
 Lab File: VX018219.D  
 Acq: 02 Sep 2020 16:34

Instrument : MSVOA\_X  
 ClientSampled : MDL07

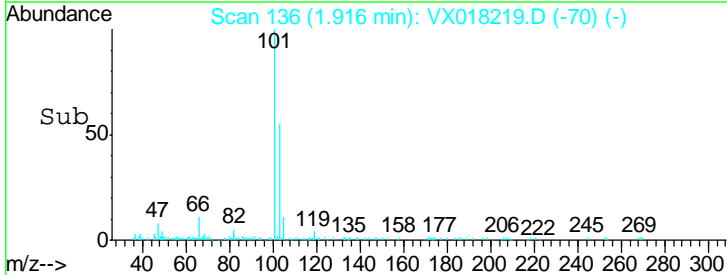
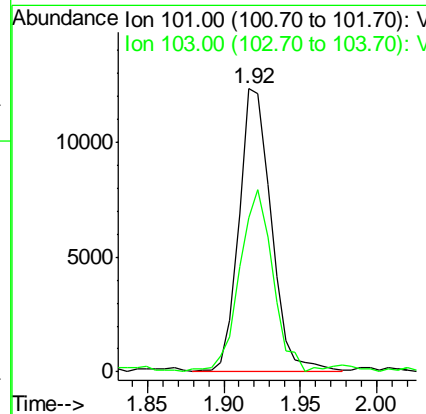
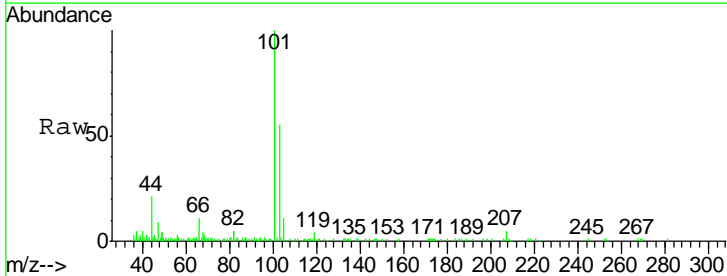
Tgt Ion	Ratio	Lower	Upper
64	100		
66	29.1	22.5	41.7

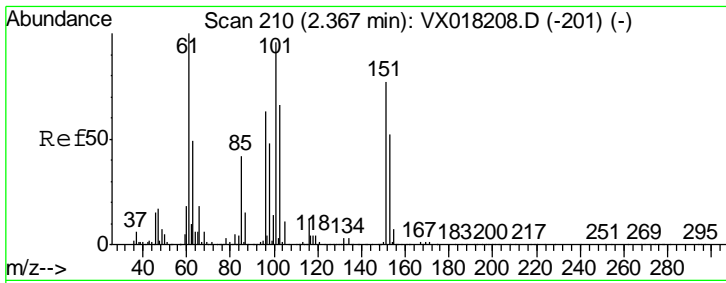
Manual Integrations  
**APPROVED**  
 MMDadoda  
 9/3/2020 9:54:17 AM



#9  
 Trichlorofluoromethane  
 Concen: 2.124 ug/L  
 RT: 1.92 min Scan# 136  
 Delta R.T. 0.00 min  
 Lab File: VX018219.D  
 Acq: 02 Sep 2020 16:34

Tgt Ion	Ratio	Lower	Upper
101	100		
103	65.3	51.4	77.2





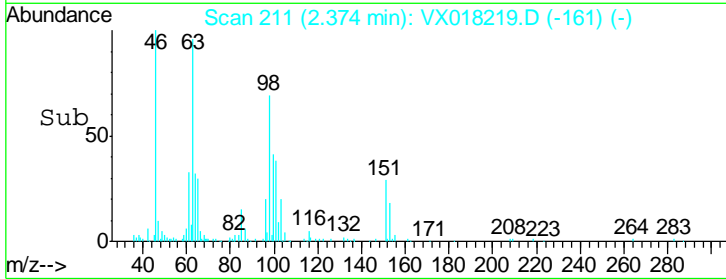
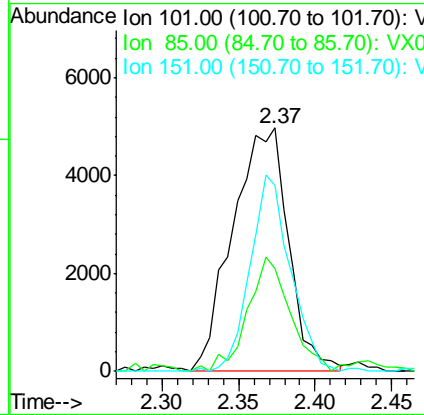
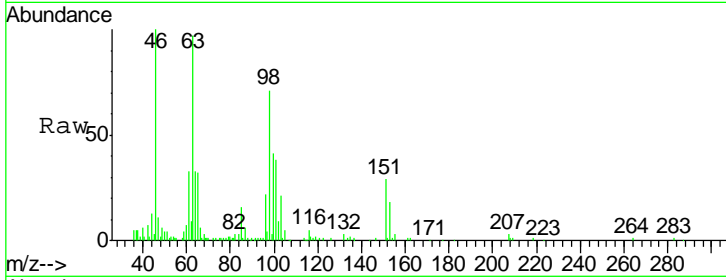
#10  
 1,1,2-Trichloro-1,2,2-trifluoroethane  
 Concen: 2.721 ug/L  
 RT: 2.37 min Scan# 211  
 Delta R.T. 0.01 min  
 Lab File: VX018219.D  
 Acq: 02 Sep 2020 16:34

Instrument :  
 MSVOA\_X  
 ClientSampled :  
 MDL07

Tgt Ion	Resp	Lower	Upper
101	12605		
101	100		
85	35.3	35.8	53.6#
151	58.0	61.6	92.4#

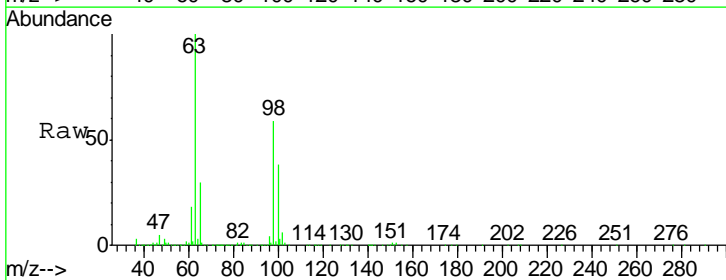
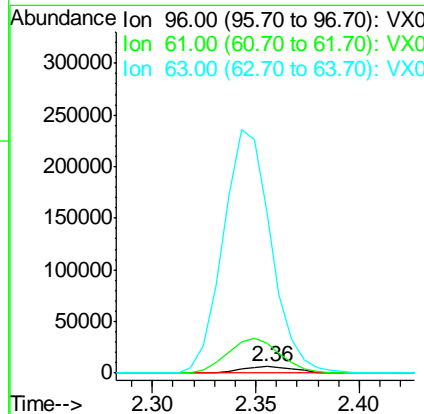
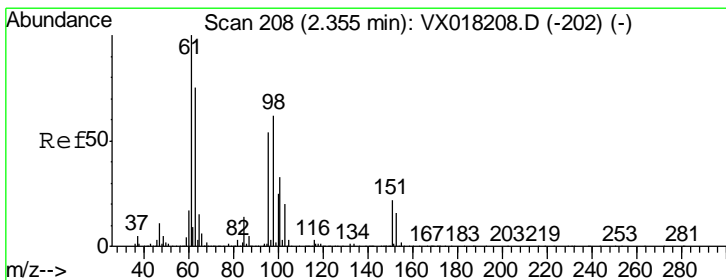
Manual Integrations  
 APPROVED

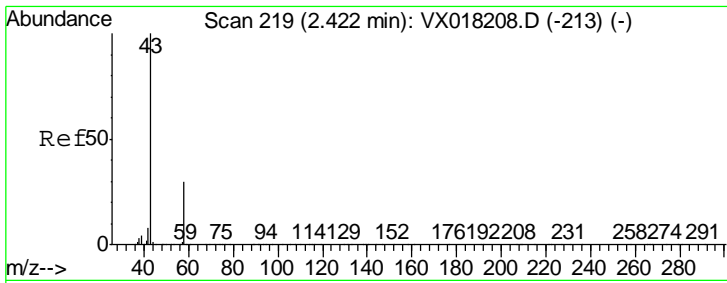
MMDadoda  
 9/3/2020 9:54:17 AM



#12  
 1,1-Dichloroethene  
 Concen: 2.719 ug/L m  
 RT: 2.36 min Scan# 208  
 Delta R.T. 0.00 min  
 Lab File: VX018219.D  
 Acq: 02 Sep 2020 16:34

Tgt Ion	Resp	Lower	Upper
96	11855		
96	100		
61	441.5	130.5	242.5#
63	2393.6	103.0	191.2#



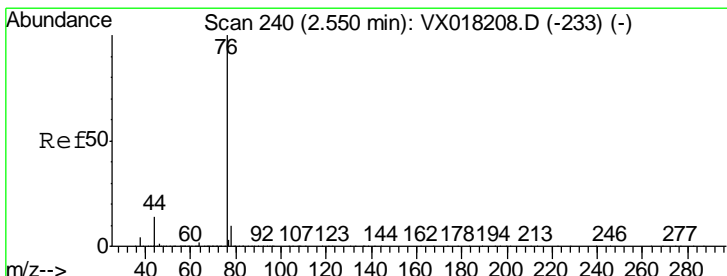
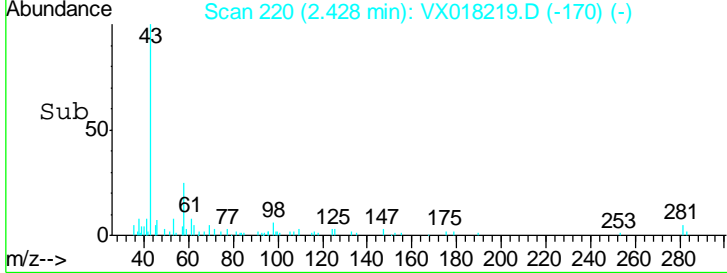
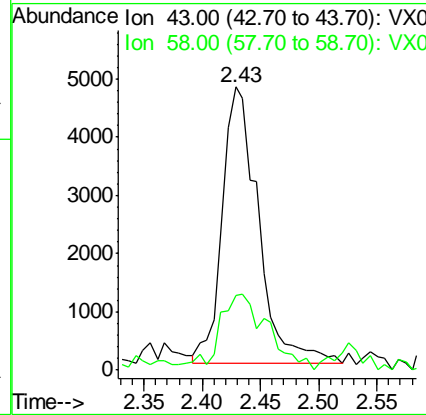
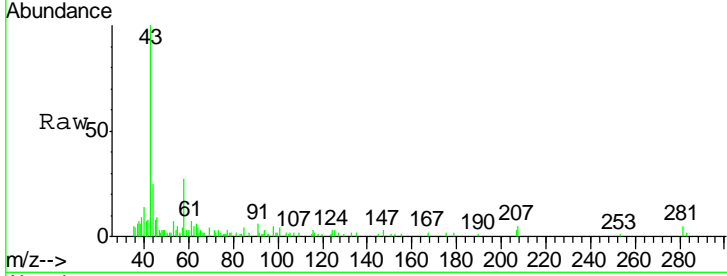


#13  
 Acetone  
 Concen: 4.814 ug/L  
 RT: 2.43 min Scan# 220  
 Delta R.T. 0.01 min  
 Lab File: VX018219.D  
 Acq: 02 Sep 2020 16:34

Instrument : MSVOA\_X  
 ClientSampled : MDL07

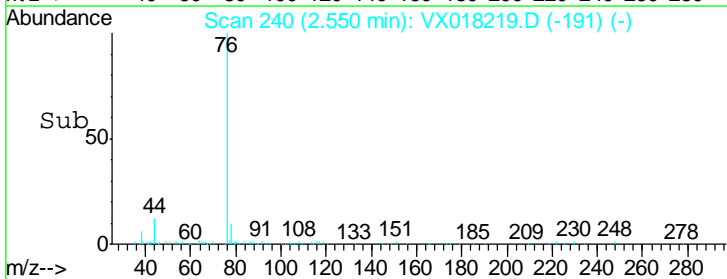
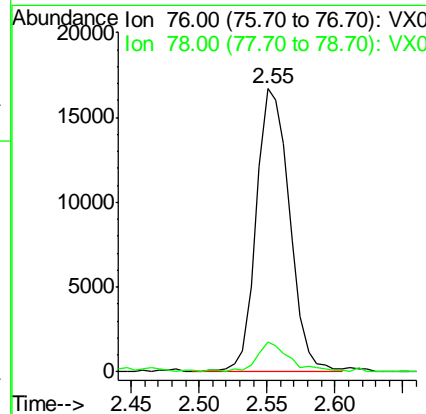
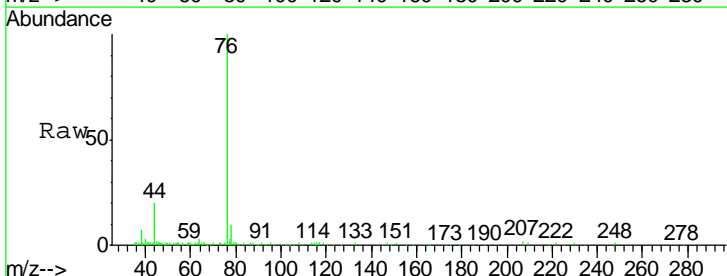
Tgt Ion	Ratio	Lower	Upper
43	100		
58	21.7	0.0	59.2

Manual Integrations  
**APPROVED**  
 MMDadoda  
 9/3/2020 9:54:17 AM

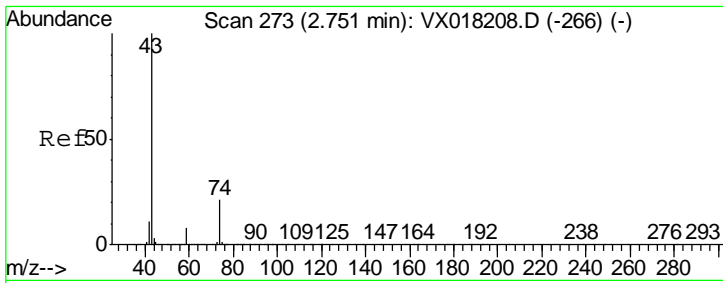


#14  
 Carbon disulfide  
 Concen: 2.090 ug/L  
 RT: 2.55 min Scan# 240  
 Delta R.T. 0.00 min  
 Lab File: VX018219.D  
 Acq: 02 Sep 2020 16:34

Tgt Ion	Ratio	Lower	Upper
76	100		
78	10.4	7.7	11.5







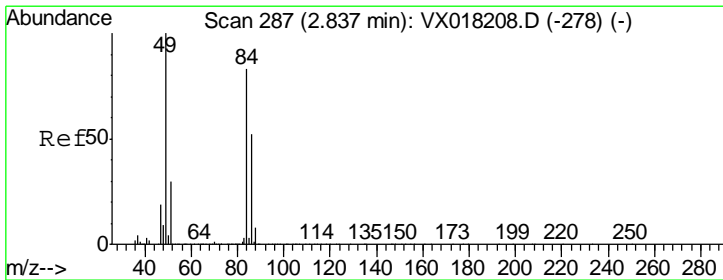
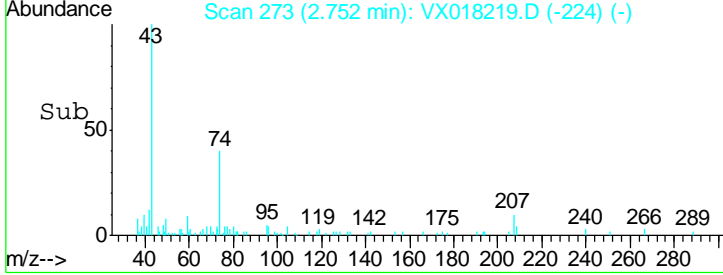
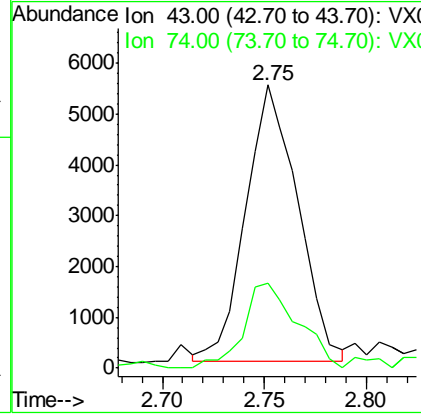
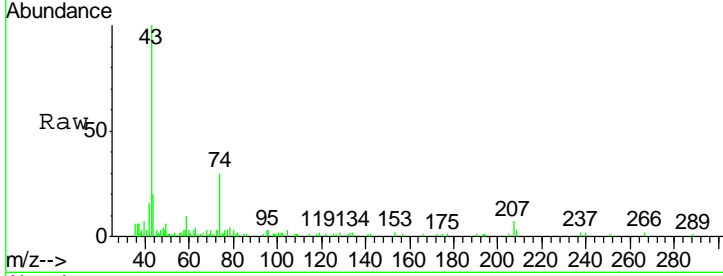
#15  
 Methyl Acetate  
 Concen: 1.865 ug/L  
 RT: 2.75 min Scan# 273  
 Delta R.T. 0.00 min  
 Lab File: VX018219.D  
 Acq: 02 Sep 2020 16:34

Instrument :  
 MSVOA\_X  
 ClientSampled :  
 MDL07

Tgt Ion	Ratio	Lower	Upper
43	100		
74	31.9	17.8	26.8#

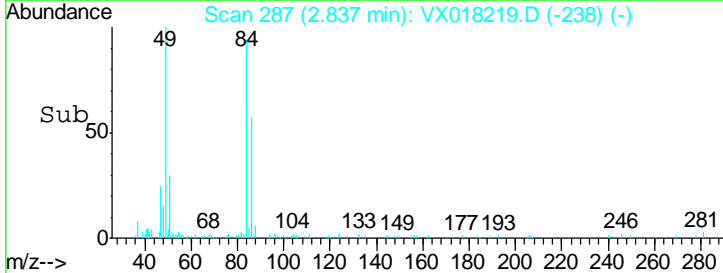
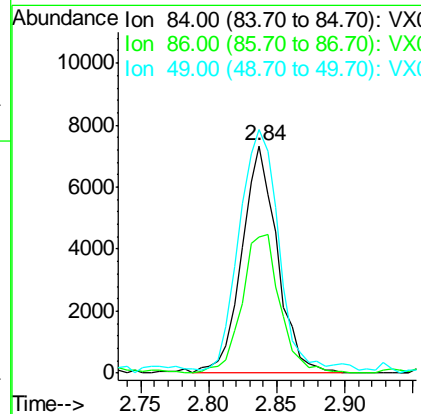
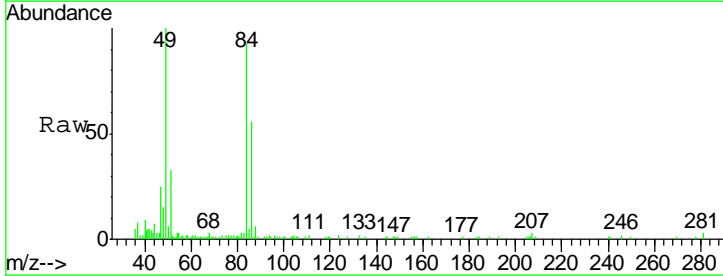
Manual Integrations  
 APPROVED

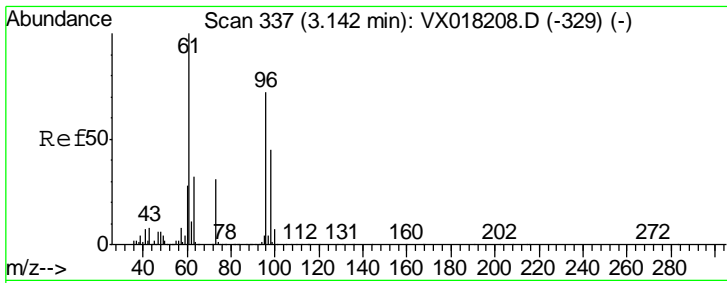
MMDadoda  
 9/3/2020 9:54:17 AM



#16  
 Methylene chloride  
 Concen: 2.702 ug/L  
 RT: 2.84 min Scan# 287  
 Delta R.T. 0.00 min  
 Lab File: VX018219.D  
 Acq: 02 Sep 2020 16:34

Tgt Ion	Ratio	Lower	Upper
84	100		
86	60.1	43.6	81.0
49	107.1	84.5	156.9



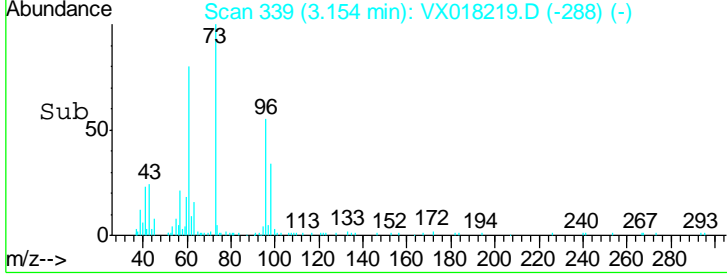
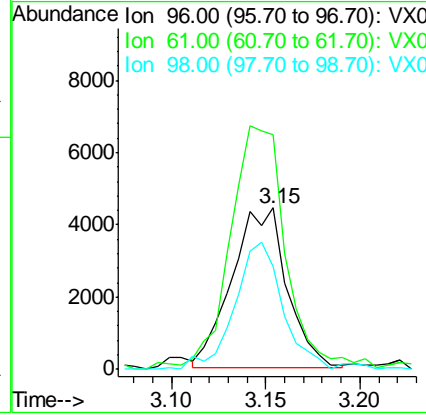
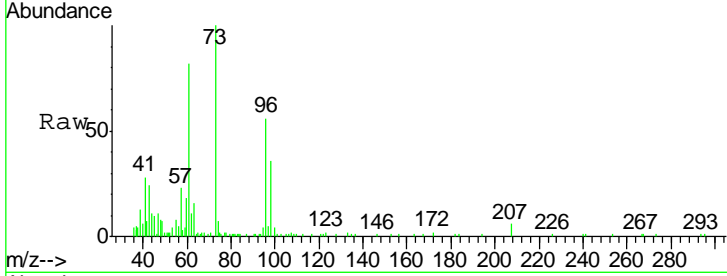


#17  
 trans-1,2-Dichloroethene  
 Concen: 1.925 ug/L  
 RT: 3.15 min Scan# 339  
 Delta R.T. 0.01 min  
 Lab File: VX018219.D  
 Acq: 02 Sep 2020 16:34

Instrument : MSVOA\_X  
 ClientSampled : MDL07

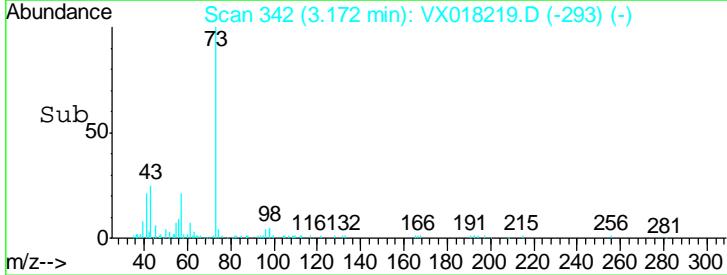
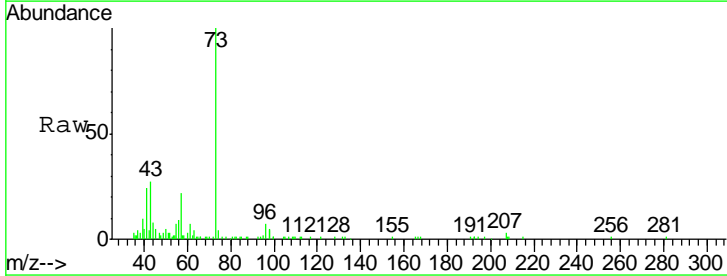
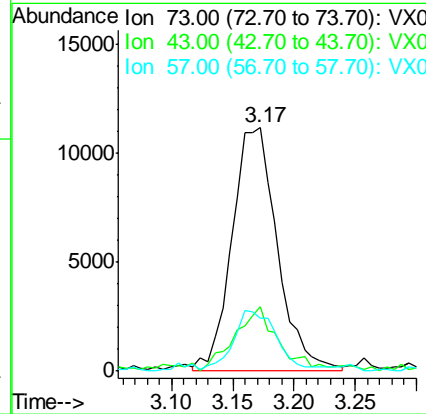
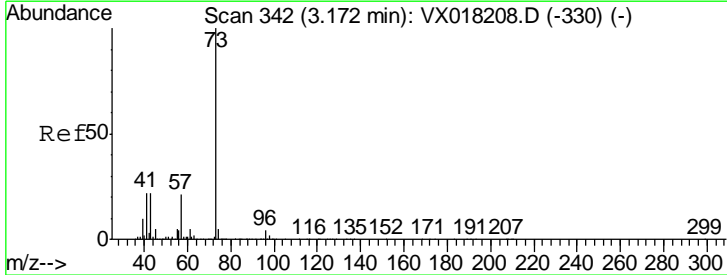
Tgt Ion	Resp	Lower	Upper
96	8997		
96	100		
61	145.7	97.1	180.3
98	64.0	43.9	81.5

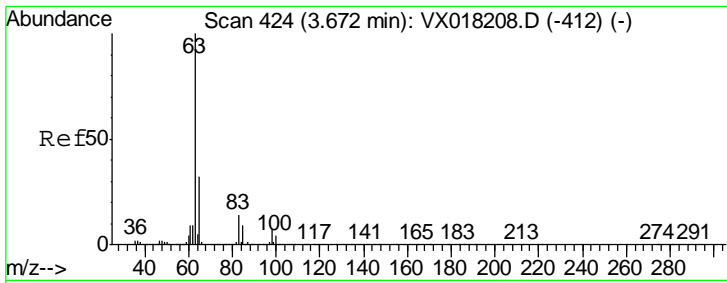
Manual Integrations  
**APPROVED**  
 MMDadoda  
 9/3/2020 9:54:17 AM



#18  
 Methyl tert-butyl Ether  
 Concen: 1.958 ug/L  
 RT: 3.17 min Scan# 342  
 Delta R.T. 0.00 min  
 Lab File: VX018219.D  
 Acq: 02 Sep 2020 16:34

Tgt Ion	Resp	Lower	Upper
73	28581		
73	100		
43	22.9	17.4	26.2
57	22.4	17.1	25.7





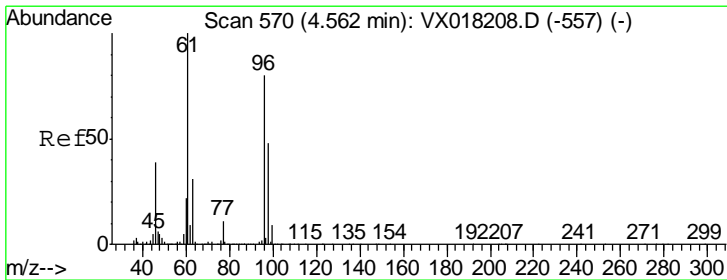
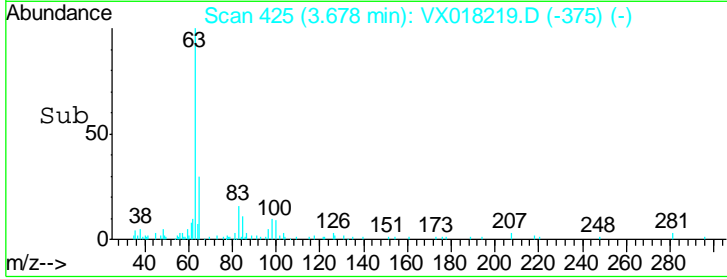
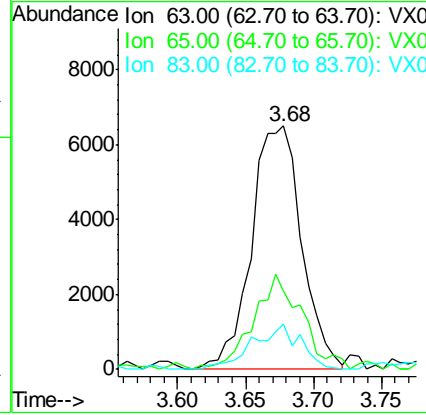
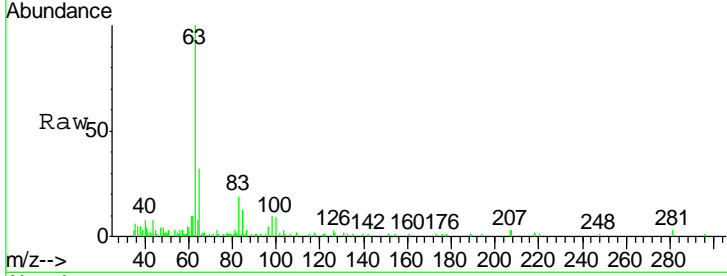
#19  
 1,1-Dichloroethane  
 Concen: 1.917 ug/L  
 RT: 3.68 min Scan# 425  
 Delta R.T. 0.01 min  
 Lab File: VX018219.D  
 Acq: 02 Sep 2020 16:34

Instrument : MSVOA\_X  
 ClientSampled : MDL07

Tgt Ion	Ratio	Lower	Upper
63	100		
65	32.0	22.7	42.3
83	18.6	9.7	18.1#

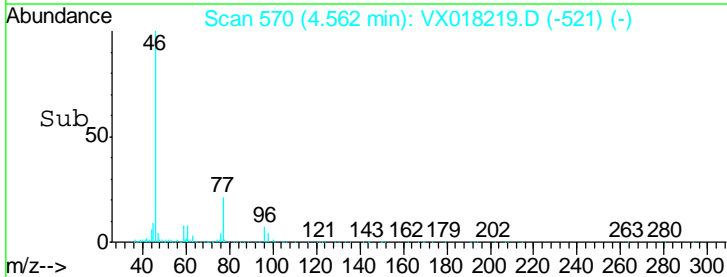
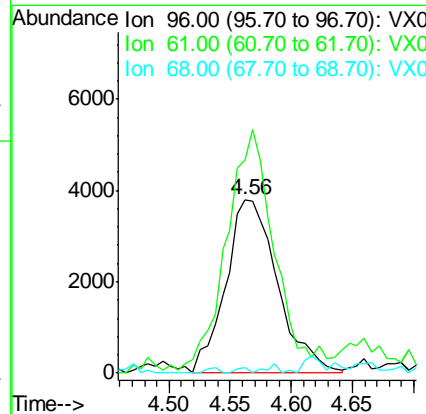
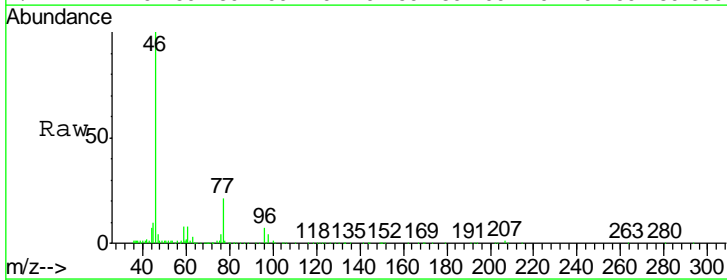
Manual Integrations  
 APPROVED

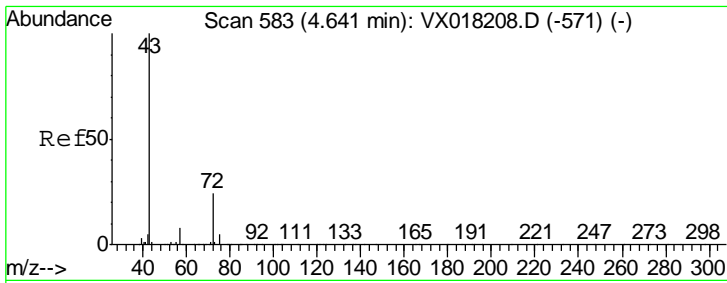
MMDadoda  
 9/3/2020 9:54:17 AM



#20  
 cis-1,2-Dichloroethene  
 Concen: 2.240 ug/L  
 RT: 4.56 min Scan# 570  
 Delta R.T. 0.00 min  
 Lab File: VX018219.D  
 Acq: 02 Sep 2020 16:34

Tgt Ion	Ratio	Lower	Upper
96	100		
61	122.3	88.0	163.4
68	3.1	0.1	0.1#



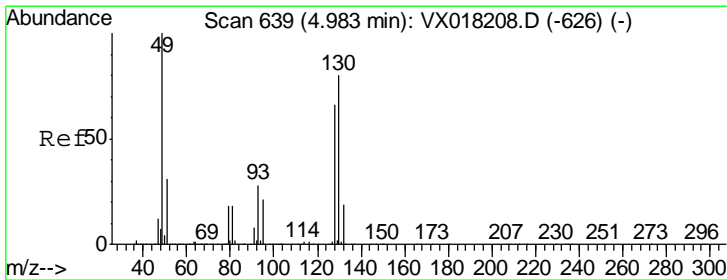
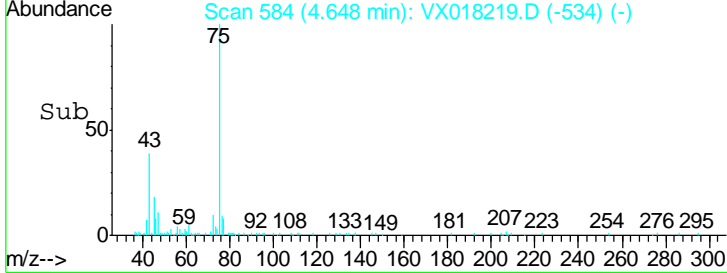
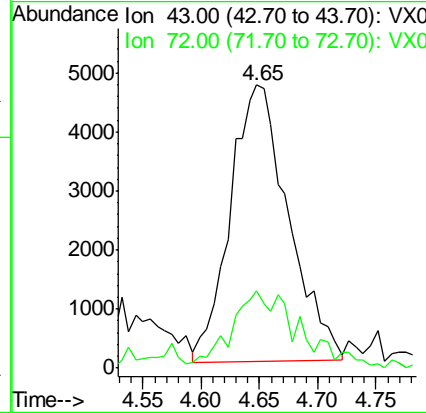
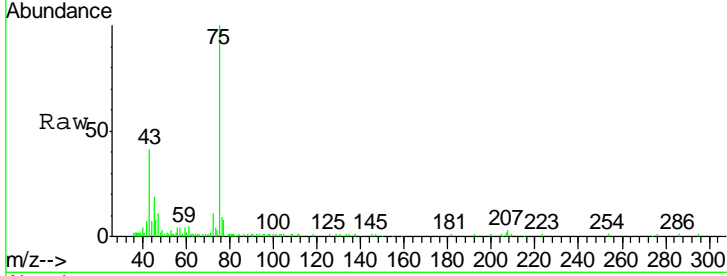


#22  
 2-Butanone  
 Concen: 4.695 ug/L  
 RT: 4.65 min Scan# 584  
 Delta R.T. 0.01 min  
 Lab File: VX018219.D  
 Acq: 02 Sep 2020 16:34

Instrument : MSVOA\_X  
 ClientSampled : MDL07

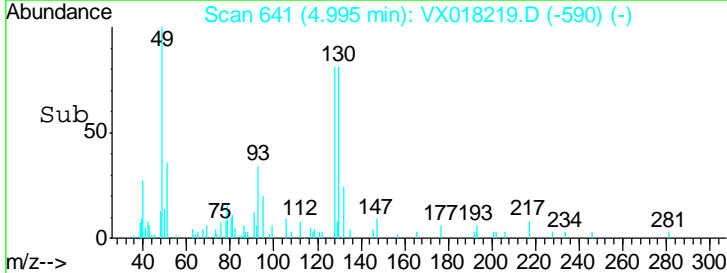
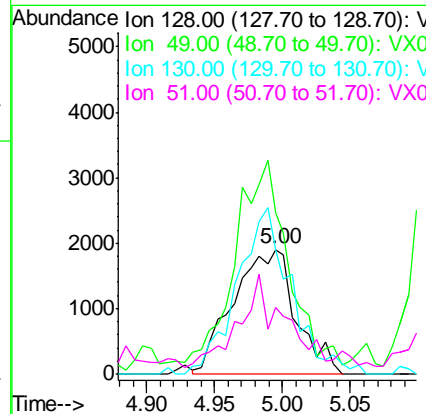
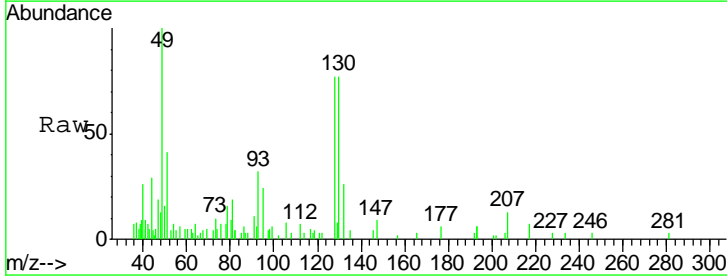
Tgt Ion	Ratio	Lower	Upper
43	100		
72	14.6	12.7	38.1

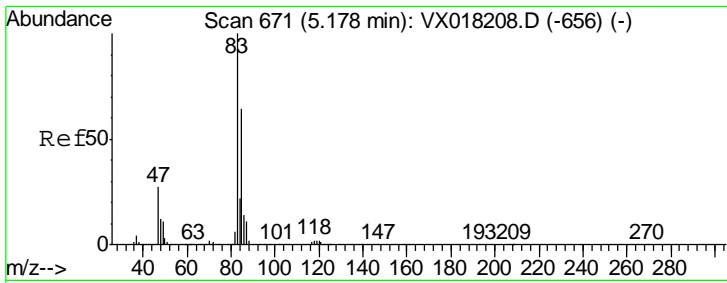
Manual Integrations APPROVED  
 MMDadoda  
 9/3/2020 9:54:17 AM



#23  
 Bromochloromethane  
 Concen: 2.192 ug/L  
 RT: 5.00 min Scan# 641  
 Delta R.T. 0.01 min  
 Lab File: VX018219.D  
 Acq: 02 Sep 2020 16:34

Tgt Ion	Ratio	Lower	Upper
128	100		
49	129.6	106.8	198.4
130	100.3	85.3	158.5
51	53.4	38.5	57.7





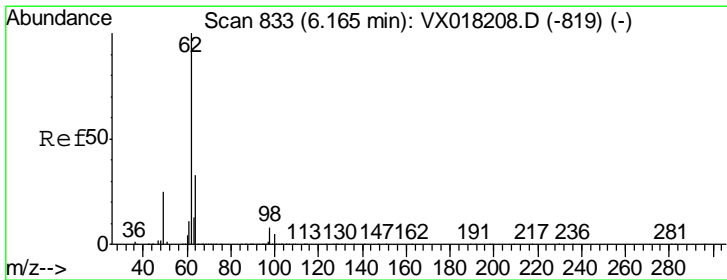
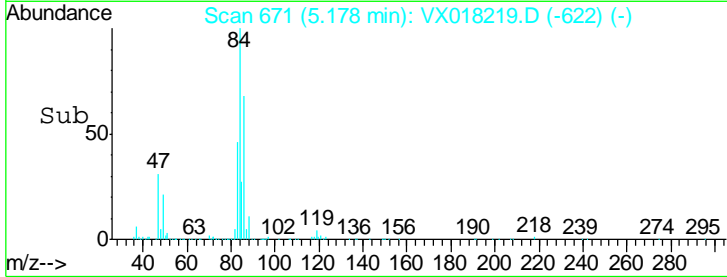
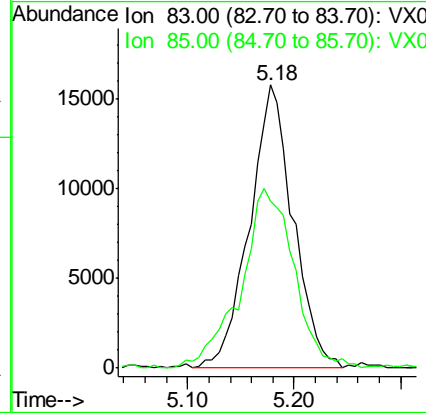
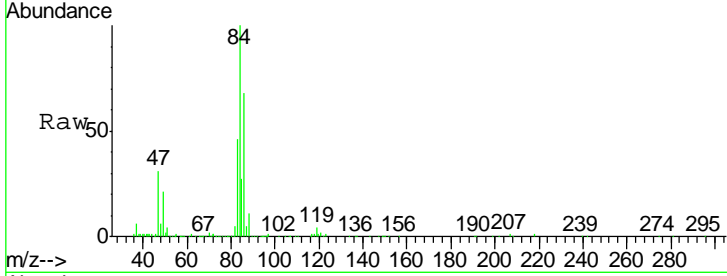
#25  
 Chloroform  
 Concen: 4.492 ug/L  
 RT: 5.18 min Scan# 671  
 Delta R.T. 0.00 min  
 Lab File: VX018219.D  
 Acq: 02 Sep 2020 16:34

**Instrument :**  
 MSVOA\_X  
**ClientSampled :**  
 MDL07

Tgt Ion	Resp	Lower	Upper
83	100		
85	58.8	44.7	83.1

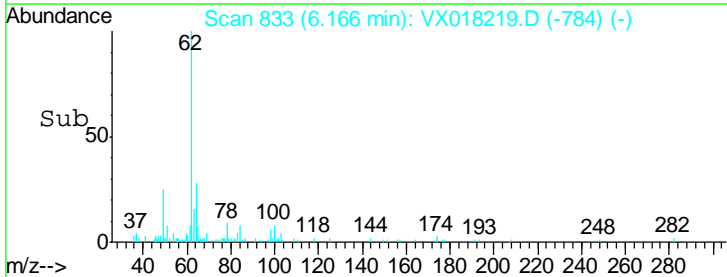
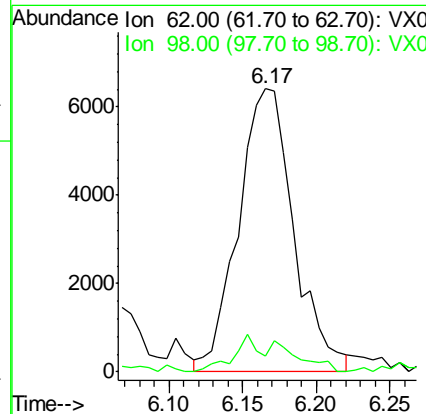
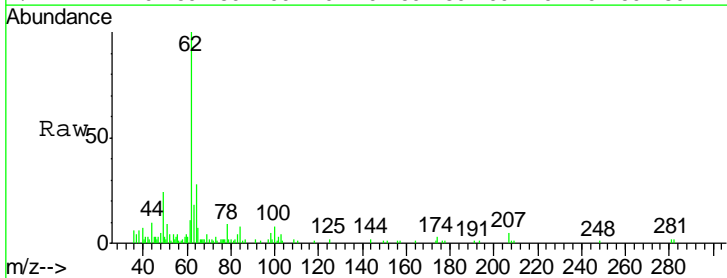
**Manual Integrations**  
**APPROVED**

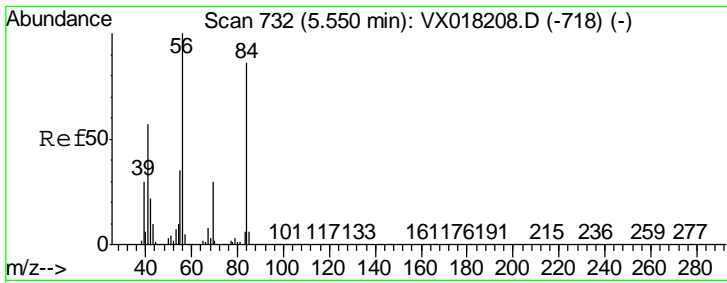
MMDadoda  
 9/3/2020 9:54:17 AM



#27  
 1,2-Dichloroethane  
 Concen: 2.220 ug/L m  
 RT: 6.17 min Scan# 833  
 Delta R.T. 0.00 min  
 Lab File: VX018219.D  
 Acq: 02 Sep 2020 16:34

Tgt Ion	Resp	Lower	Upper
62	100		
98	5.5	6.6	9.8#





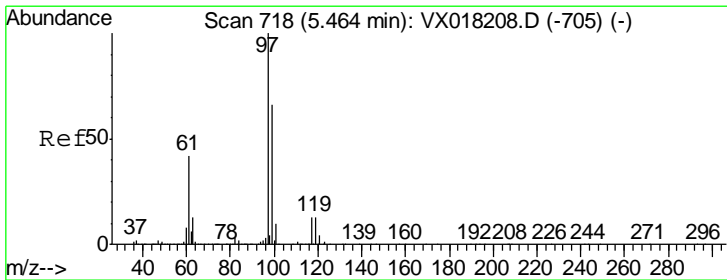
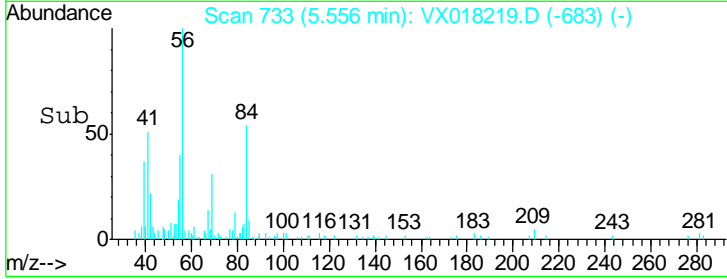
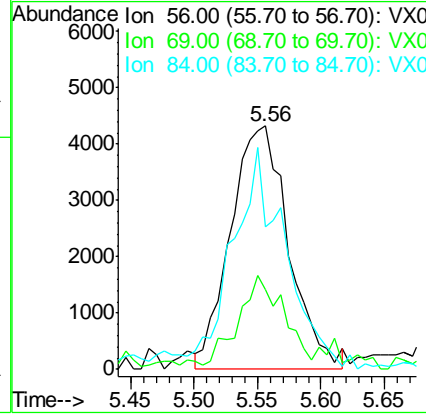
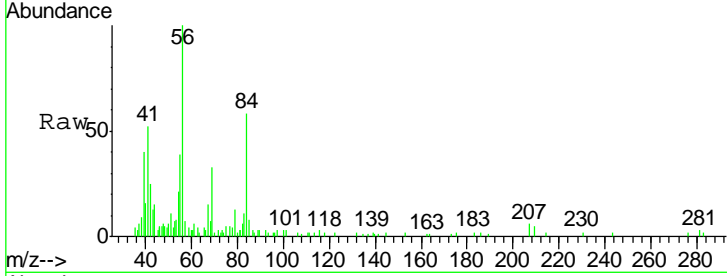
#29  
 Cyclohexane  
 Concen: 1.970 ug/L m  
 RT: 5.56 min Scan# 733  
 Delta R.T. 0.01 min  
 Lab File: VX018219.D  
 Acq: 02 Sep 2020 16:34

Instrument : MSVOA\_X  
 ClientSampled : MDL07

Tgt Ion	Resp	Lower	Upper
56	13761		
69	0.6	25.4	38.2#
84	1.5	69.8	104.8#

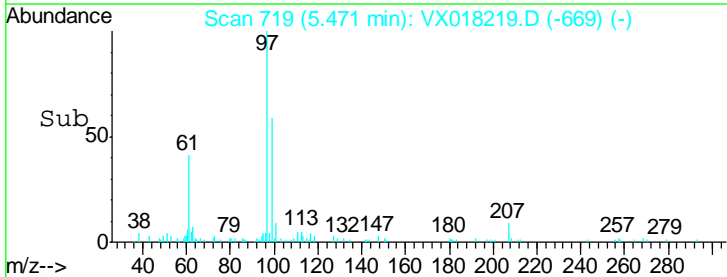
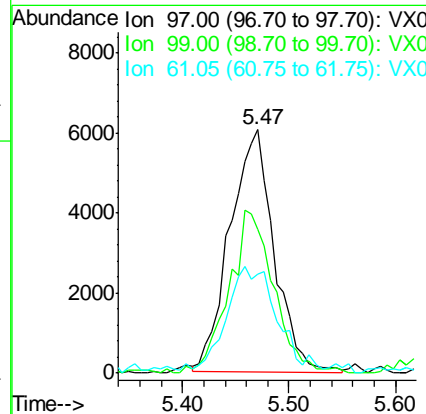
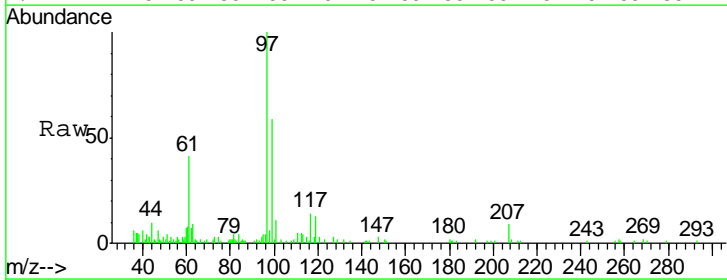
Manual Integrations  
 APPROVED

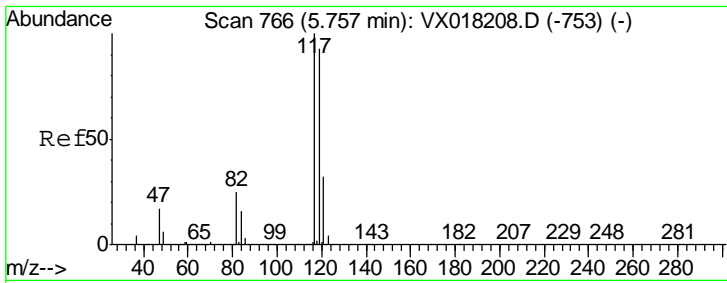
MMDadoda  
 9/3/2020 9:54:17 AM



#30  
 1,1,1-Trichloroethane  
 Concen: 2.023 ug/L  
 RT: 5.47 min Scan# 719  
 Delta R.T. 0.01 min  
 Lab File: VX018219.D  
 Acq: 02 Sep 2020 16:34

Tgt Ion	Resp	Lower	Upper
97	17640		
99	66.5	51.7	77.5
61	24.3	33.8	50.6#



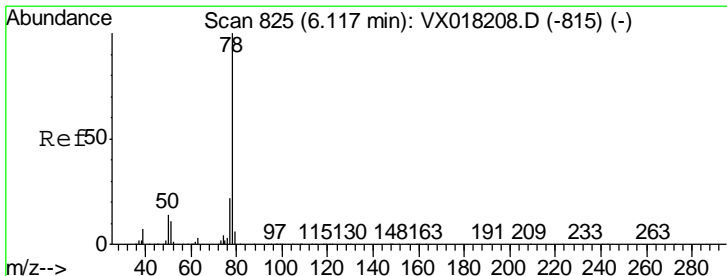
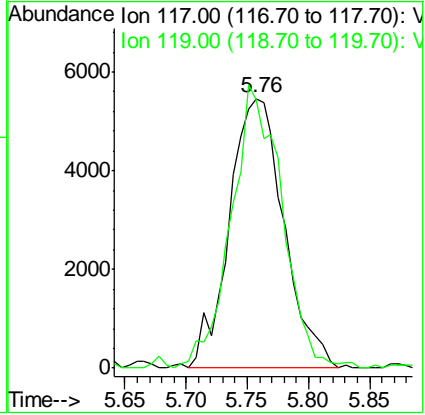
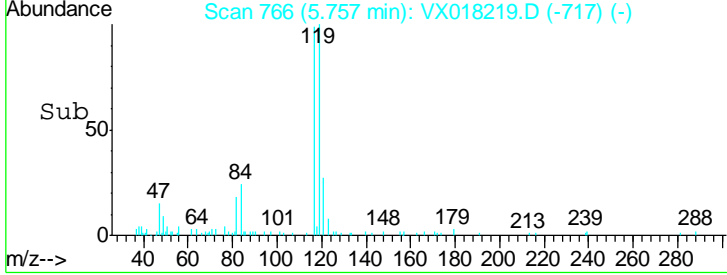
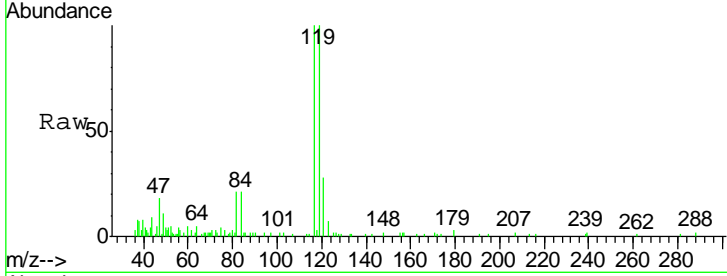


#31  
 Carbon tetrachloride  
 Concen: 2.133 ug/L  
 RT: 5.76 min Scan# 766  
 Delta R.T. 0.00 min  
 Lab File: VX018219.D  
 Acq: 02 Sep 2020 16:34

Instrument : MSVOA\_X  
 ClientSampled : MDL07

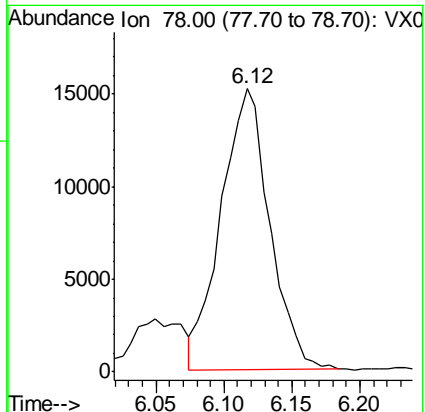
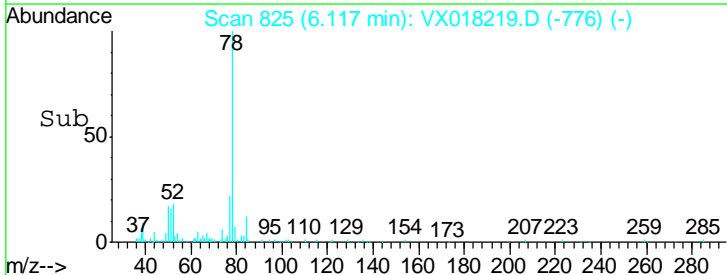
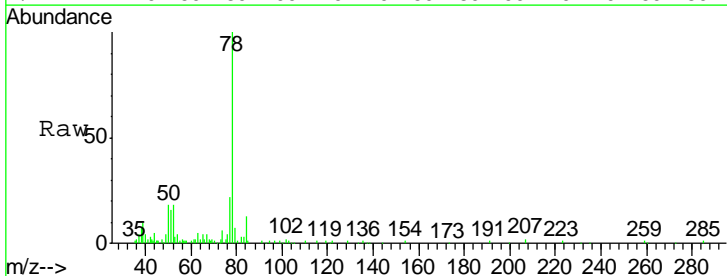
Tgt Ion: 117 Resp: 16932  
 Ion Ratio Lower Upper  
 117 100  
 119 97.2 76.8 115.2

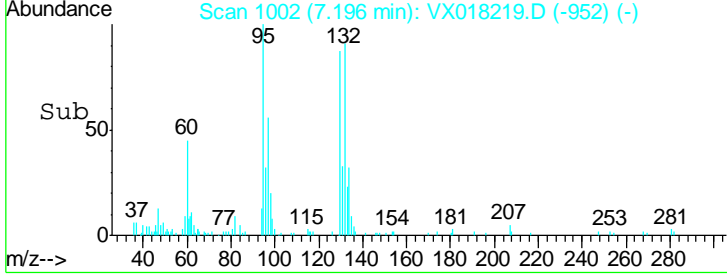
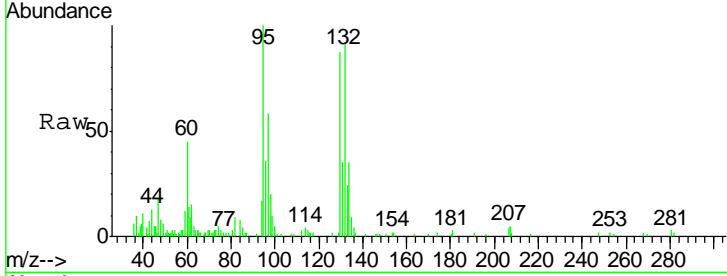
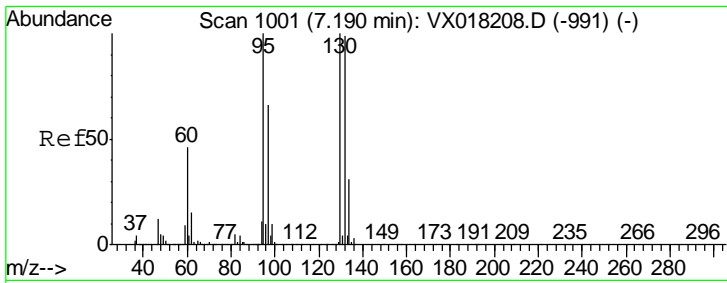
Manual Integrations  
**APPROVED**  
 MMDadoda  
 9/3/2020 9:54:17 AM



#33  
 Benzene  
 Concen: 2.054 ug/L  
 RT: 6.12 min Scan# 825  
 Delta R.T. 0.00 min  
 Lab File: VX018219.D  
 Acq: 02 Sep 2020 16:34

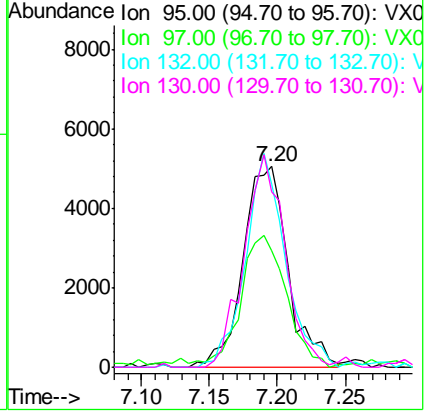
Tgt Ion: 78 Resp: 37719





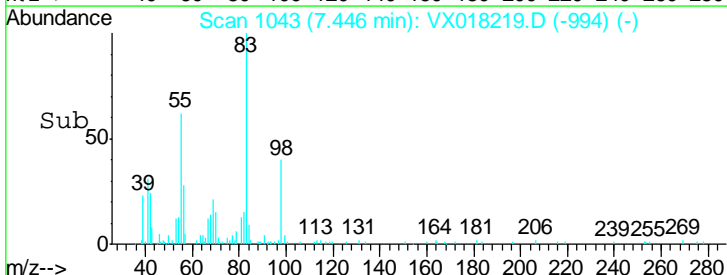
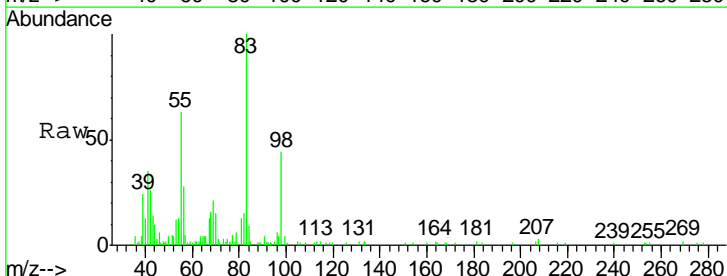
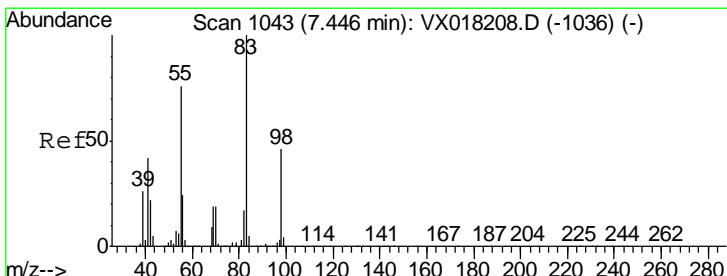
#34  
 Trichloroethene  
 Concen: 2.276 ug/L  
 RT: 7.20 min Scan# 1002  
 Delta R.T. 0.01 min  
 Lab File: VX018219.D  
 Acq: 02 Sep 2020 16:34

Tgt Ion	Resp	Lower	Upper
95	11734		
95	100		
97	58.0	46.2	85.8
132	91.1	69.2	128.4
130	122.5	70.1	130.3



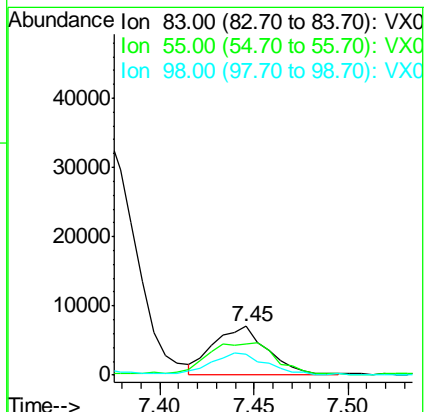
Instrument : MSVOA\_X  
 ClientSampled : MDL07

Manual Integrations  
**APPROVED**  
 MMDadoda  
 9/3/2020 9:54:17 AM

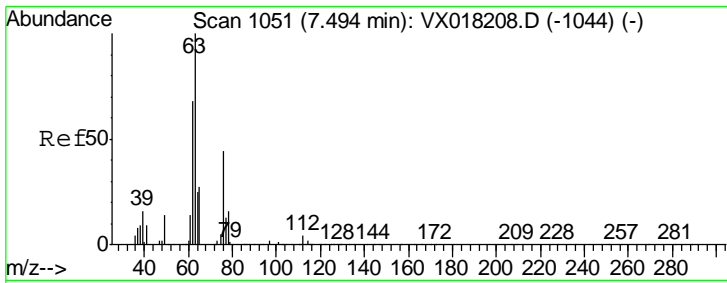


#35  
 Methylcyclohexane  
 Concen: 1.932 ug/L  
 RT: 7.45 min Scan# 1043  
 Delta R.T. 0.00 min  
 Lab File: VX018219.D  
 Acq: 02 Sep 2020 16:34

Tgt Ion	Resp	Lower	Upper
83	13847		
83	100		
55	39.0	62.6	94.0#
98	47.4	37.1	55.7







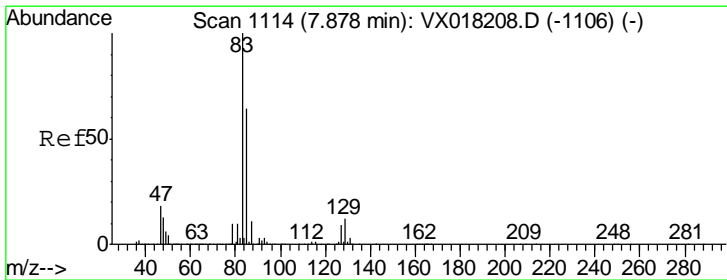
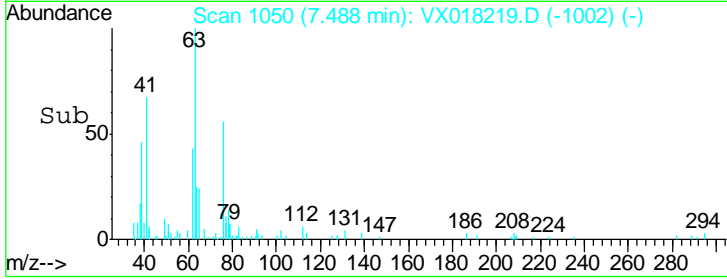
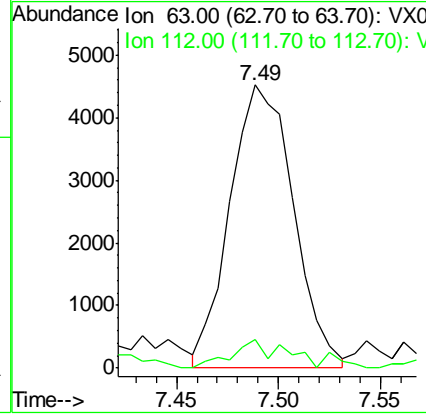
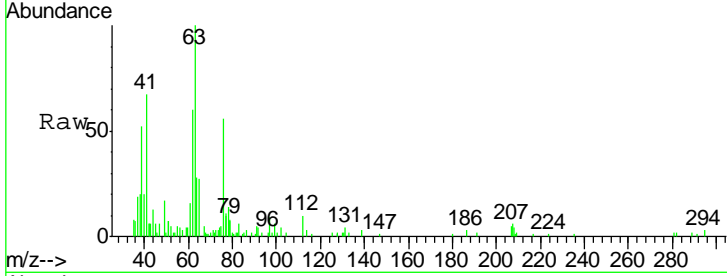
#37  
 1,2-Dichloropropane  
 Concen: 2.007 ug/L  
 RT: 7.49 min Scan# 1050  
 Delta R.T. -0.01 min  
 Lab File: VX018219.D  
 Acq: 02 Sep 2020 16:34

Instrument : MSVOA\_X  
 ClientSampled : MDL07

Tgt Ion	Ratio	Lower	Upper
63	100		
112	3.5	3.6	5.4#

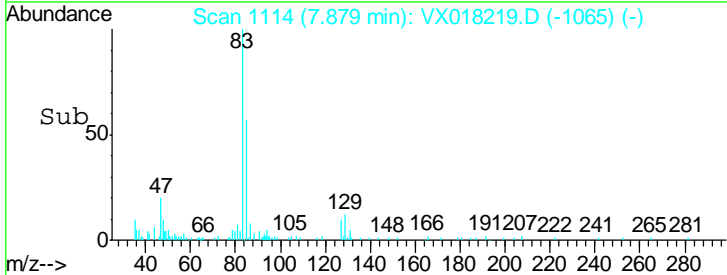
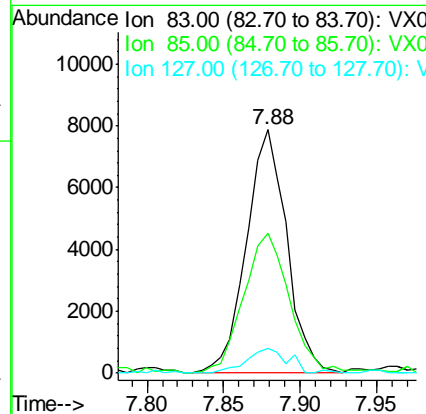
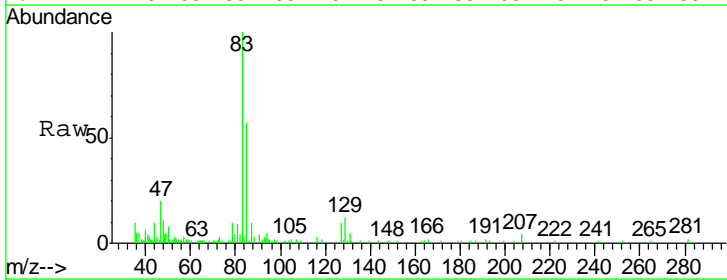
Manual Integrations  
 APPROVED

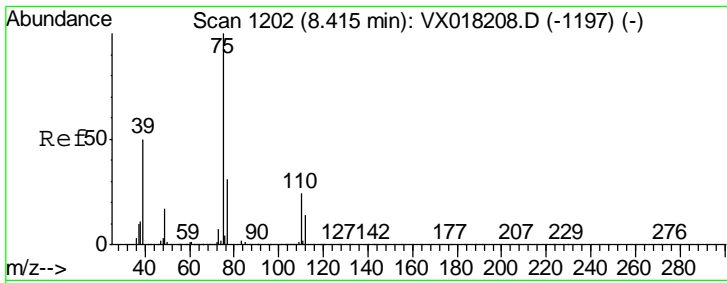
MMDadoda  
 9/3/2020 9:54:17 AM



#38  
 Bromodichloromethane  
 Concen: 2.086 ug/L  
 RT: 7.88 min Scan# 1114  
 Delta R.T. 0.00 min  
 Lab File: VX018219.D  
 Acq: 02 Sep 2020 16:34

Tgt Ion	Ratio	Lower	Upper
83	100		
85	57.5	44.5	82.7
127	10.0	7.4	11.2



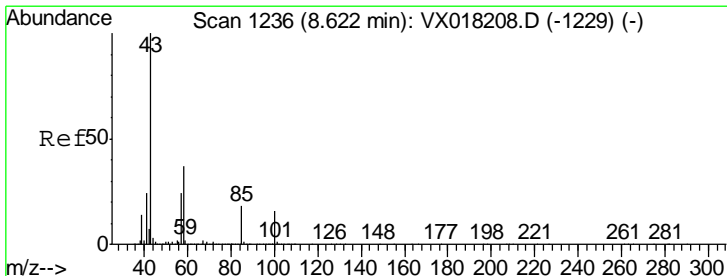
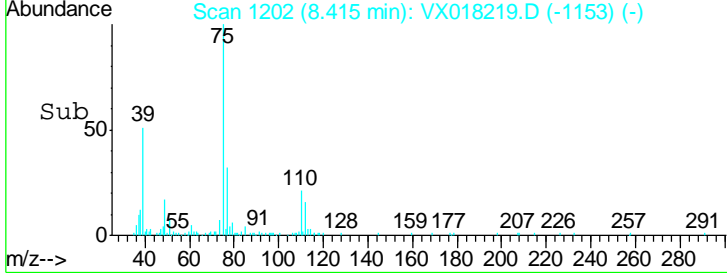
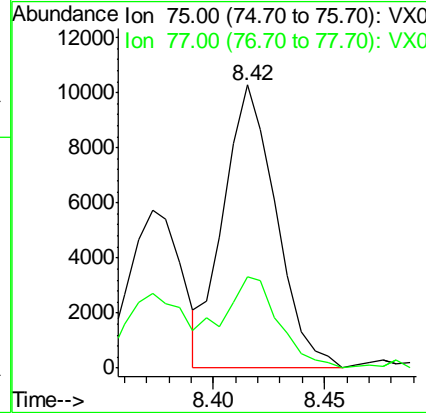
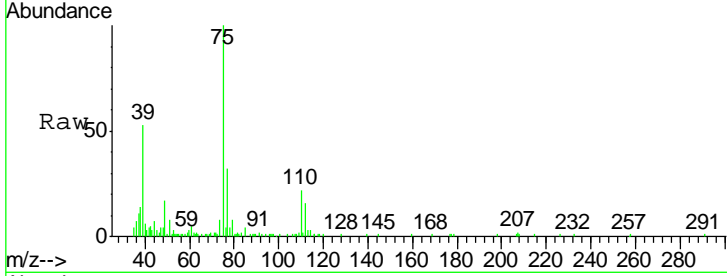


#39  
 cis-1,3-Dichloropropene  
 Concen: 2.228 ug/L  
 RT: 8.42 min Scan# 1202  
 Delta R.T. 0.00 min  
 Lab File: VX018219.D  
 Acq: 02 Sep 2020 16:34

Instrument : MSVOA\_X  
 Client Sampled : MDL07

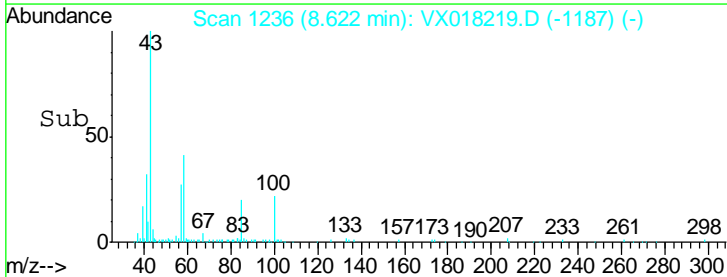
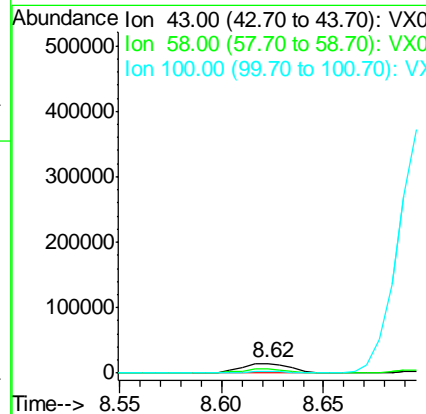
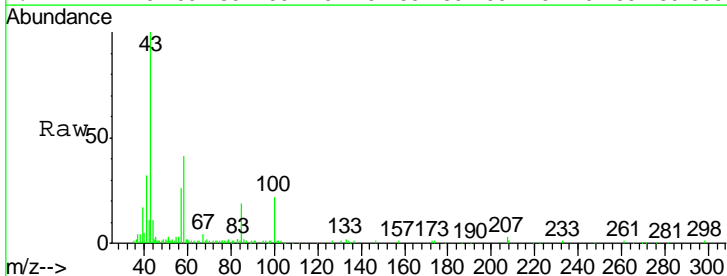
Tgt Ion	Resp	Lower	Upper
75	16898		
75	100		
77	32.2	21.7	40.3

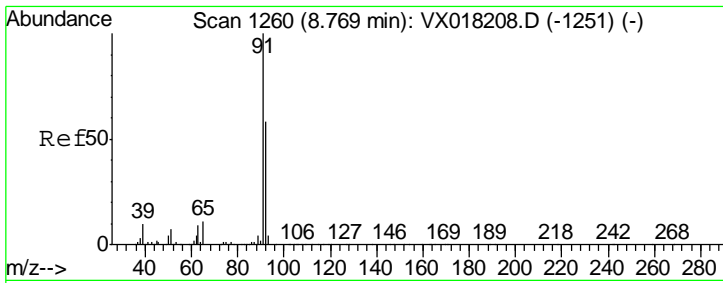
Manual Integrations  
**APPROVED**  
 MMDadoda  
 9/3/2020 9:54:17 AM



#40  
 4-Methyl-2-pentanone  
 Concen: 3.601 ug/L  
 RT: 8.62 min Scan# 1236  
 Delta R.T. 0.00 min  
 Lab File: VX018219.D  
 Acq: 02 Sep 2020 16:34

Tgt Ion	Resp	Lower	Upper
43	23747		
43	100		
58	39.1	30.3	45.5
100	16.3	11.9	17.9



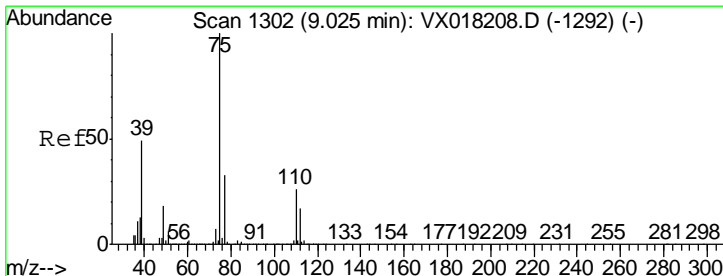
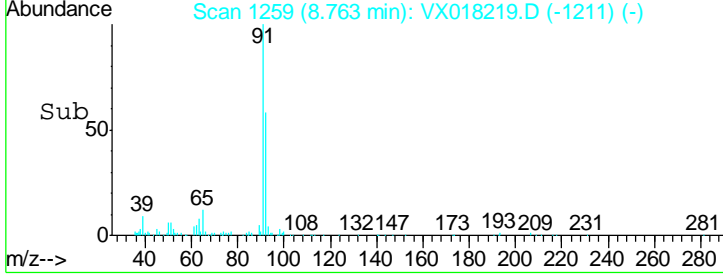
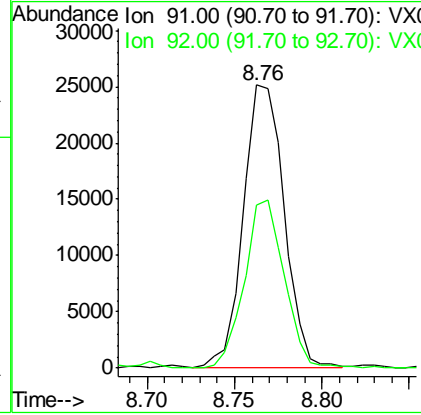
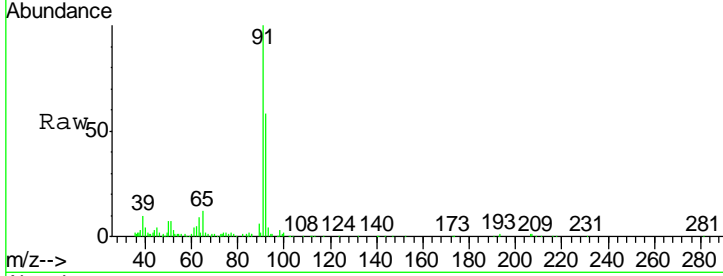


#42  
 Toluene  
 Concen: 2.081 ug/L  
 RT: 8.76 min Scan# 1259  
 Delta R.T. -0.01 min  
 Lab File: VX018219.D  
 Acq: 02 Sep 2020 16:34

Instrument : MSVOA\_X  
 ClientSampled : MDL07

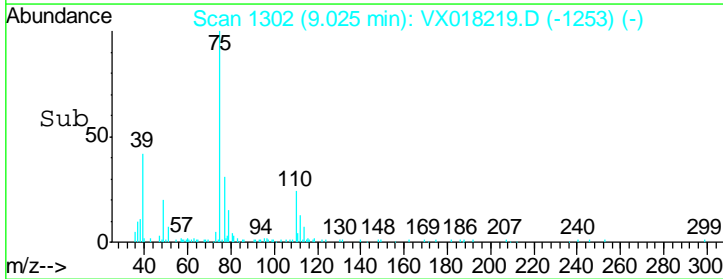
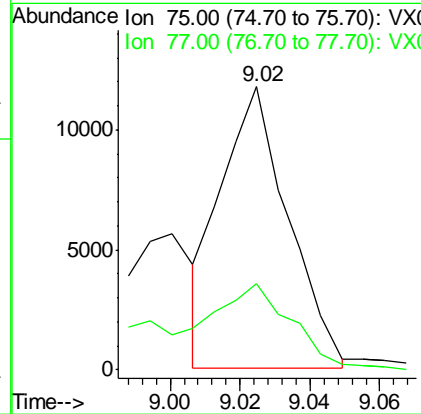
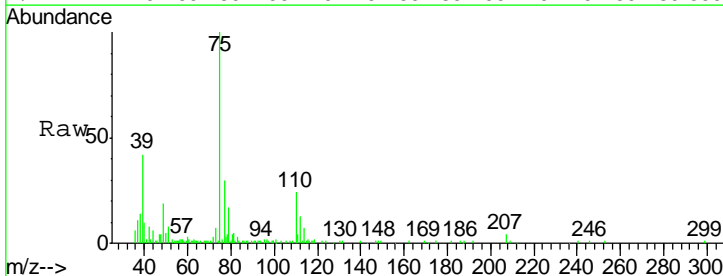
Tgt Ion	Resp	Lower	Upper
91	41025		
92	57.6	40.9	75.9

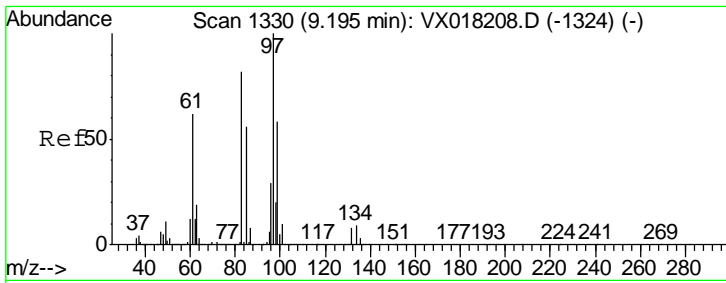
Manual Integrations  
**APPROVED**  
 MMDadoda  
 9/3/2020 9:54:17 AM



#44  
 trans-1,3-Dichloropropene  
 Concen: 1.967 ug/L  
 RT: 9.02 min Scan# 1302  
 Delta R.T. 0.00 min  
 Lab File: VX018219.D  
 Acq: 02 Sep 2020 16:34

Tgt Ion	Resp	Lower	Upper
75	15698		
77	30.5	23.2	43.0





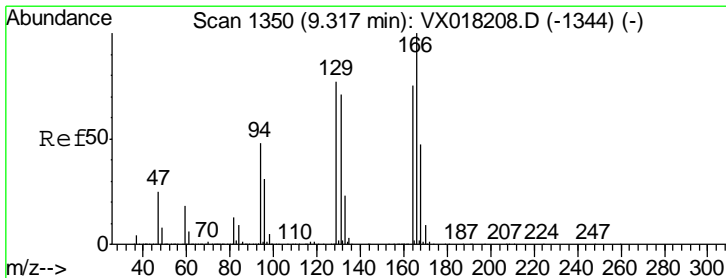
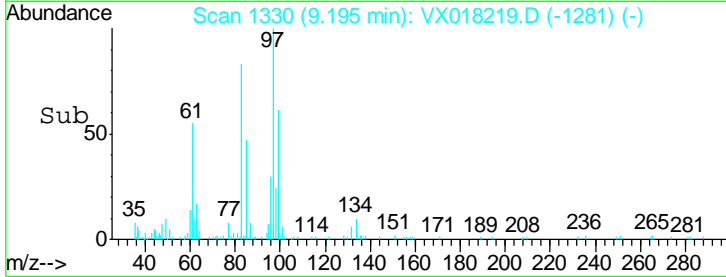
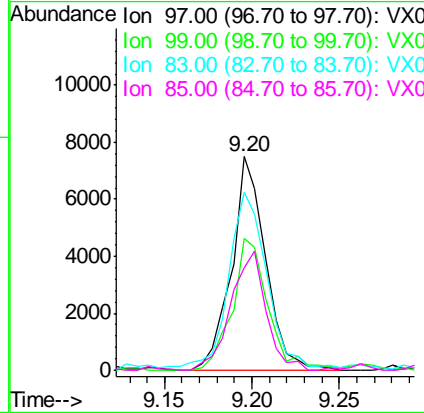
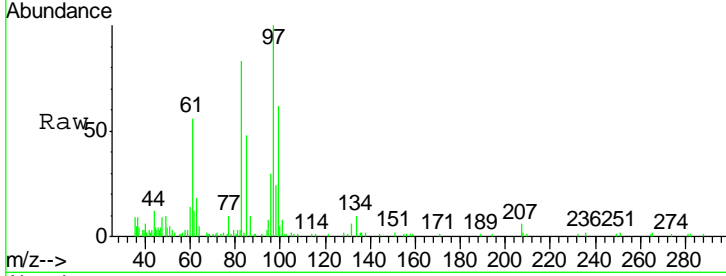
#45  
 1,1,2-Trichloroethane  
 Concen: 2.082 ug/L  
 RT: 9.20 min Scan# 1330  
 Delta R.T. 0.00 min  
 Lab File: VX018219.D  
 Acq: 02 Sep 2020 16:34

Instrument : MSVOA\_X  
 ClientSampled : MDL07

Tgt Ion	Resp	Lower	Upper
97	10165		
99	61.9	40.3	74.9
83	83.2	57.7	107.1
85	47.9	39.1	72.7

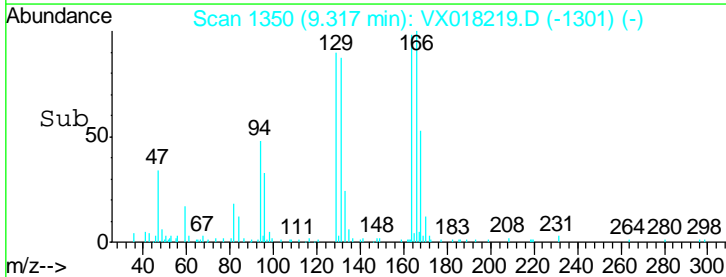
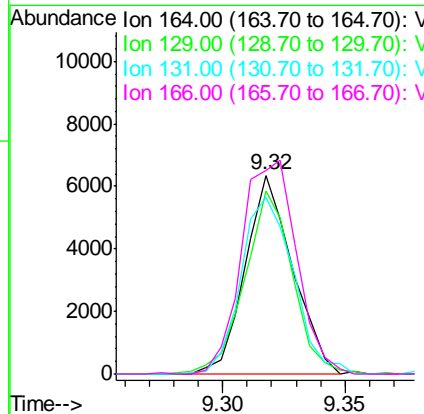
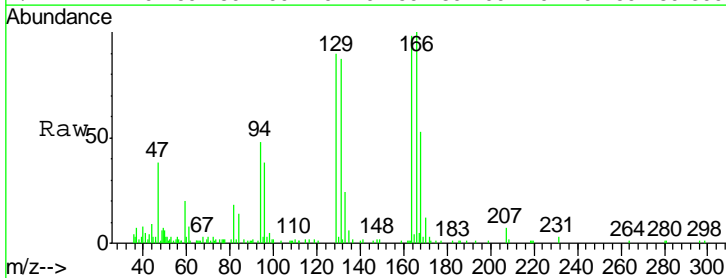
Manual Integrations  
 APPROVED

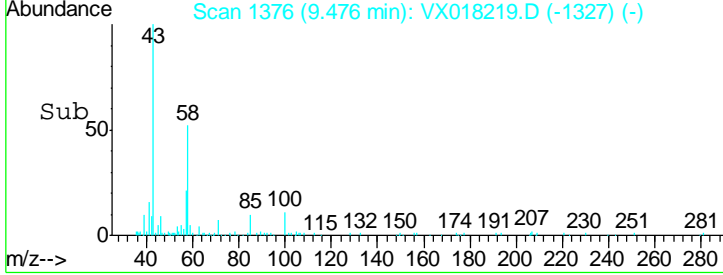
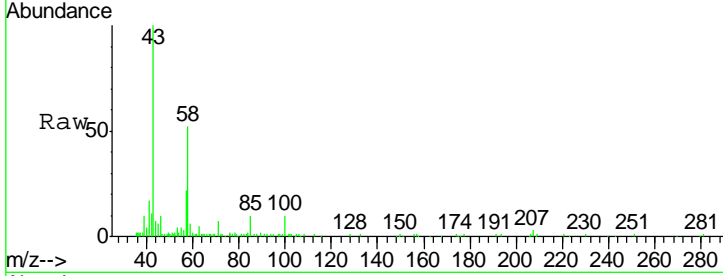
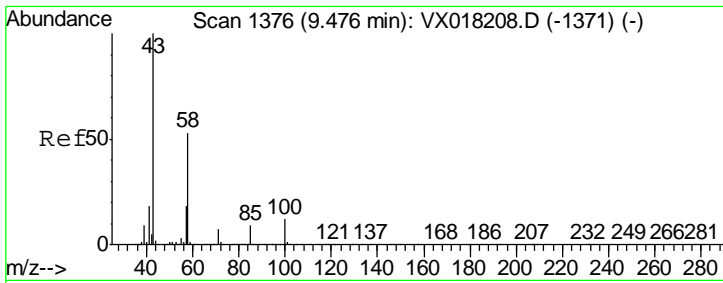
MMDadoda  
 9/3/2020 9:54:17 AM



#46  
 Tetrachloroethene  
 Concen: 2.096 ug/L  
 RT: 9.32 min Scan# 1350  
 Delta R.T. 0.00 min  
 Lab File: VX018219.D  
 Acq: 02 Sep 2020 16:34

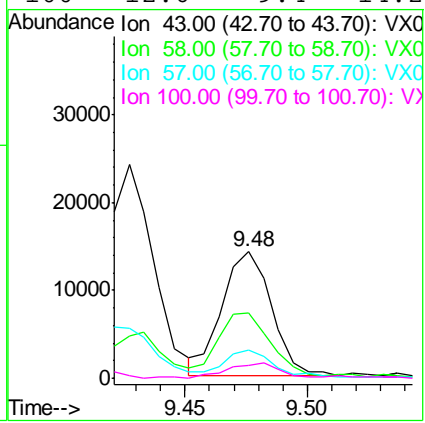
Tgt Ion	Resp	Lower	Upper
164	8613		
164	100		
129	91.9	72.0	133.6
131	88.7	66.8	124.2
166	102.1	93.9	174.5





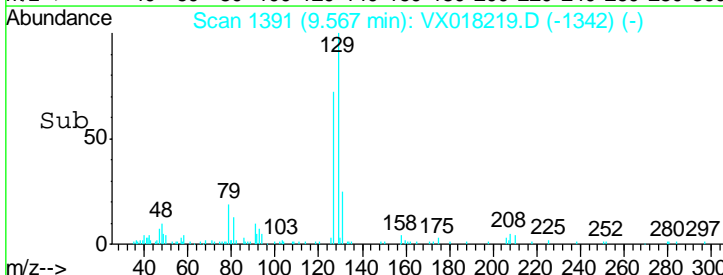
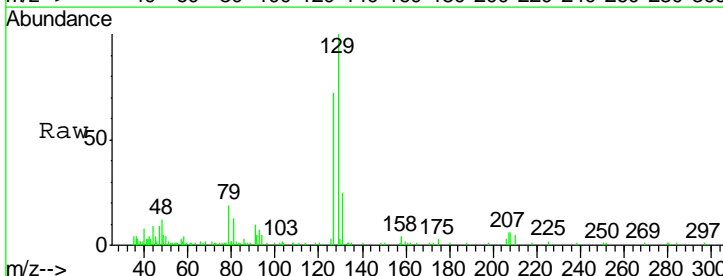
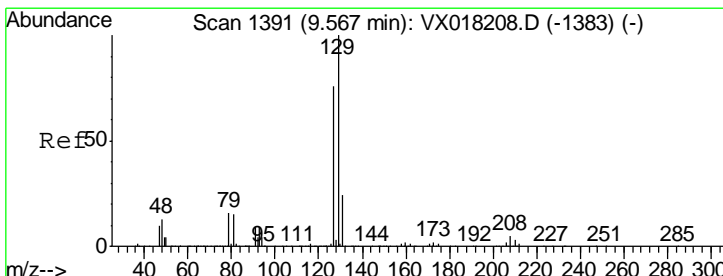
#48  
 2-Hexanone  
 Concen: 3.762 ug/L  
 RT: 9.48 min Scan# 1376  
 Delta R.T. 0.00 min  
 Lab File: VX018219.D  
 Acq: 02 Sep 2020 16:34

Tgt Ion	Resp	Lower	Upper
43	100		
58	55.9	41.8	62.8
57	21.2	15.2	22.8
100	12.6	9.4	14.2



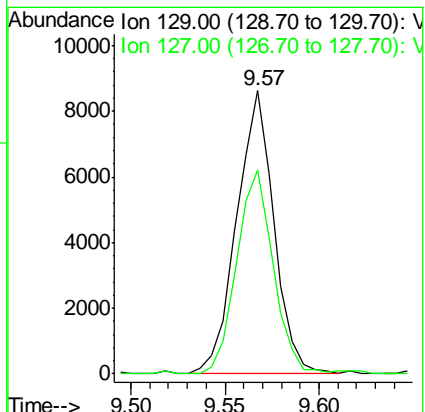
Instrument : MSVOA\_X  
 Client Sampled : MDL07

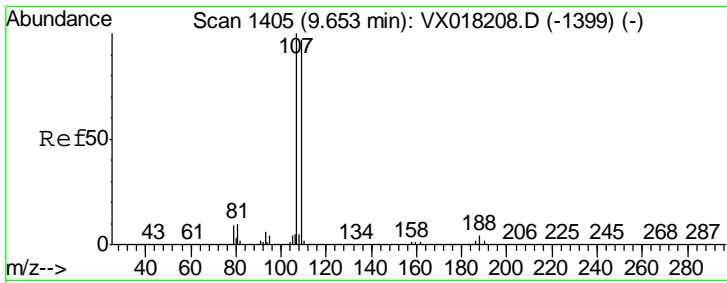
Manual Integrations  
**APPROVED**  
 MMDadoda  
 9/3/2020 9:54:17 AM



#49  
 Dibromochloromethane  
 Concen: 1.973 ug/L  
 RT: 9.57 min Scan# 1391  
 Delta R.T. 0.00 min  
 Lab File: VX018219.D  
 Acq: 02 Sep 2020 16:34

Tgt Ion	Resp	Lower	Upper
129	100		
127	72.2	53.1	98.5





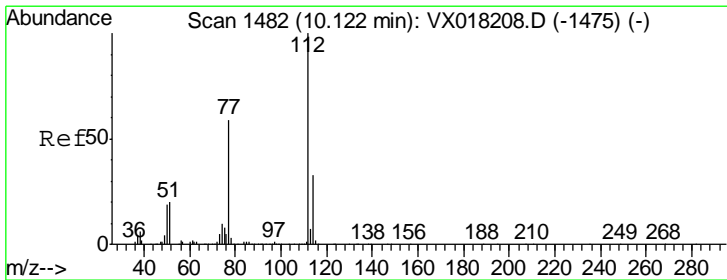
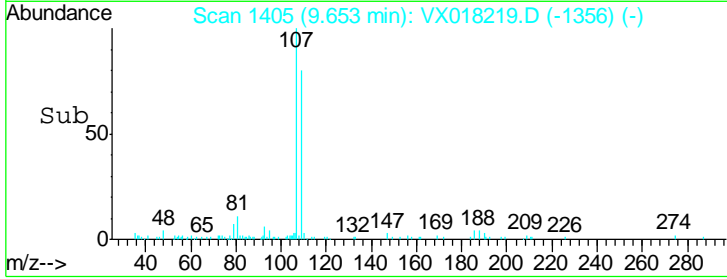
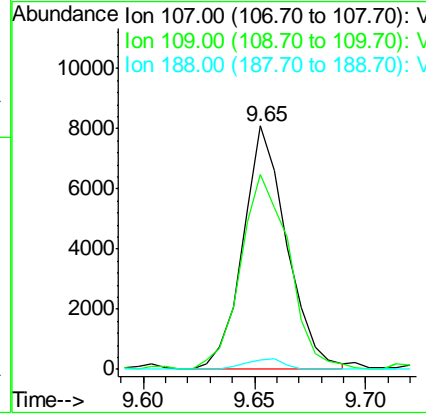
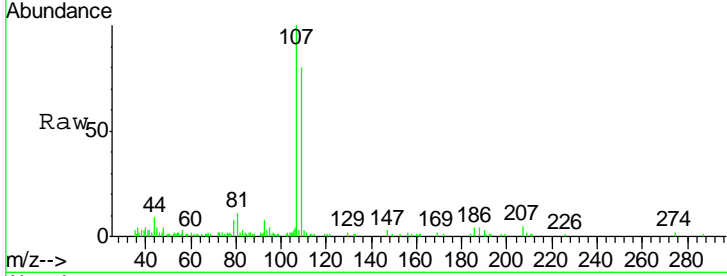
#50  
 1,2-Dibromoethane  
 Concen: 2.143 ug/L  
 RT: 9.65 min Scan# 1405  
 Delta R.T. 0.00 min  
 Lab File: VX018219.D  
 Acq: 02 Sep 2020 16:34

Instrument : MSVOA\_X  
 ClientSampled : MDL07

Tgt Ion	Resp	Lower	Upper
107	11080		
109	79.8	68.0	126.2
188	4.0	2.8	4.2

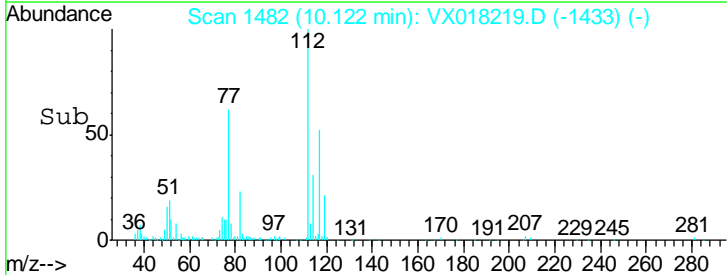
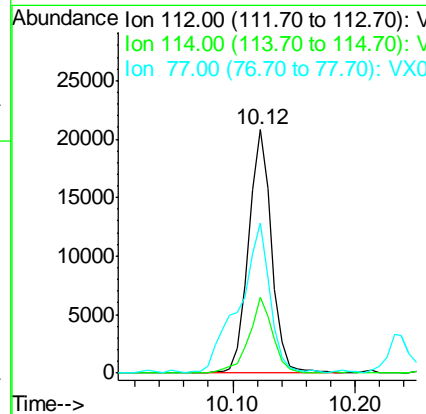
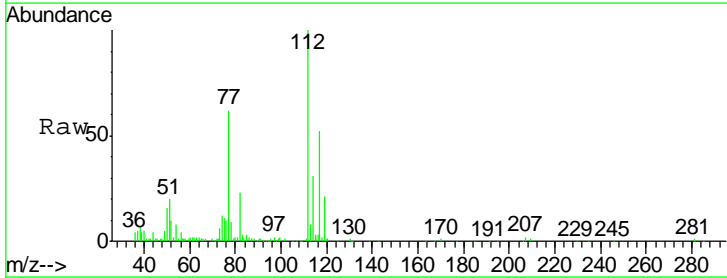
Manual Integrations  
 APPROVED

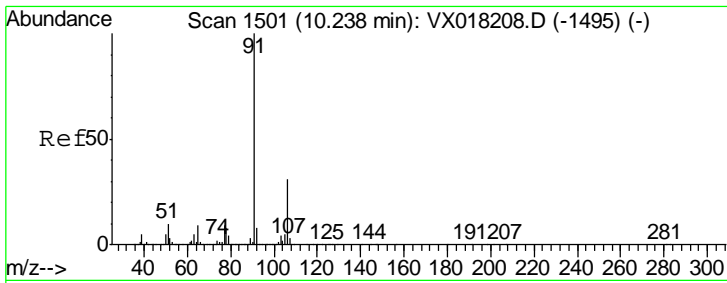
MMDadoda  
 9/3/2020 9:54:17 AM



#51  
 Chlorobenzene  
 Concen: 2.020 ug/L  
 RT: 10.12 min Scan# 1482  
 Delta R.T. 0.00 min  
 Lab File: VX018219.D  
 Acq: 02 Sep 2020 16:34

Tgt Ion	Resp	Lower	Upper
112	27125		
114	31.0	23.2	43.2
77	61.6	47.0	70.6



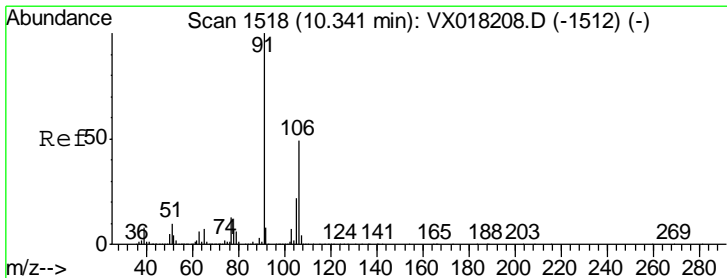
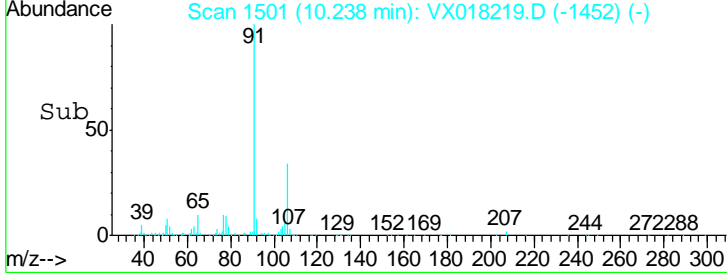
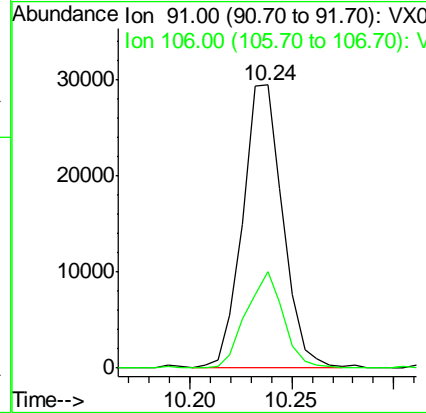
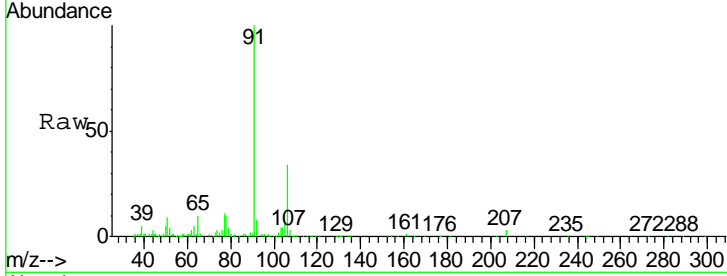


#52  
 Ethylbenzene  
 Concen: 1.828 ug/L  
 RT: 10.24 min Scan# 1501  
 Delta R.T. 0.00 min  
 Lab File: VX018219.D  
 Acq: 02 Sep 2020 16:34

Instrument : MSVOA\_X  
 ClientSampled : MDL07

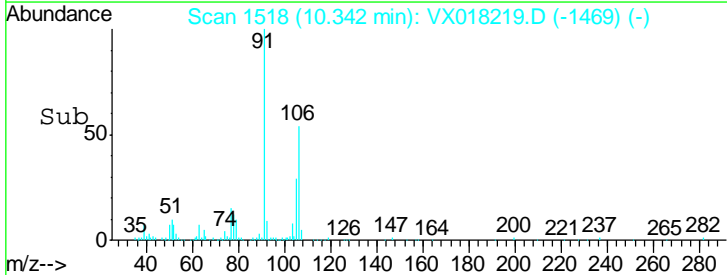
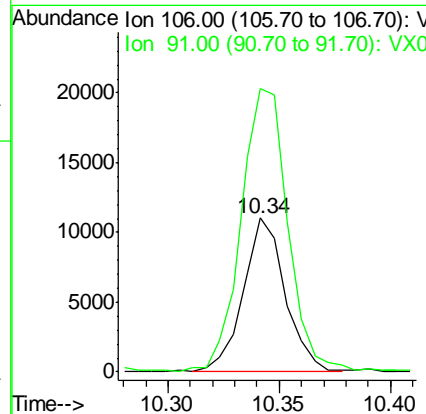
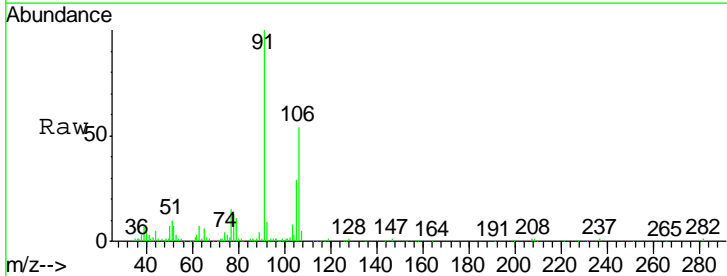
Tgt Ion	Resp	Lower	Upper
91	40175		
106	34.2	21.9	40.7

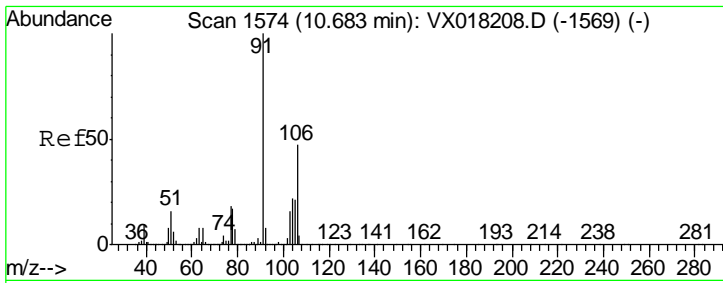
Manual Integrations  
**APPROVED**  
 MMDadoda  
 9/3/2020 9:54:17 AM



#53  
 m,p-Xylene  
 Concen: 1.740 ug/L  
 RT: 10.34 min Scan# 1518  
 Delta R.T. 0.00 min  
 Lab File: VX018219.D  
 Acq: 02 Sep 2020 16:34

Tgt Ion	Resp	Lower	Upper
106	14606		
91	184.2	142.2	264.2



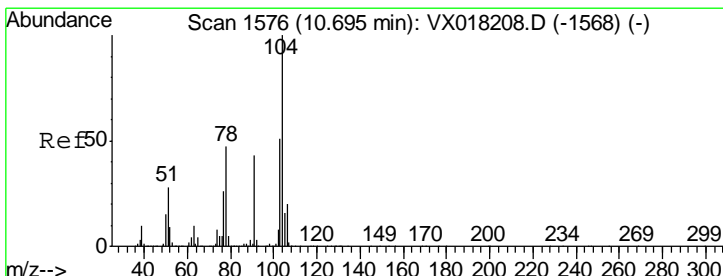
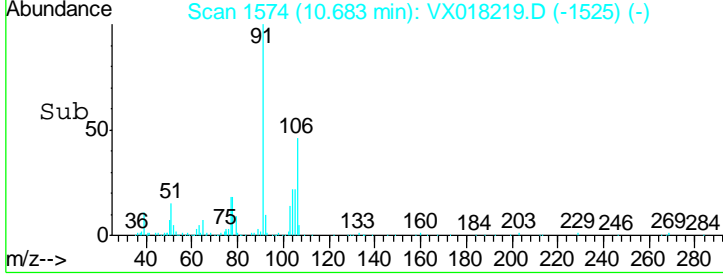
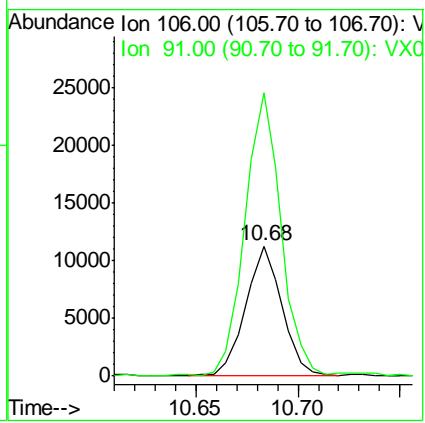
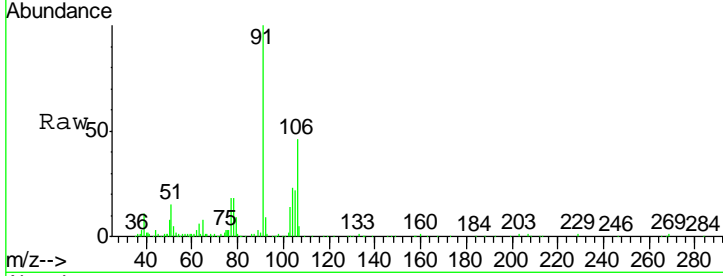


#54  
 o-xylene  
 Concen: 1.753 ug/L  
 RT: 10.68 min Scan# 1574  
 Delta R.T. 0.00 min  
 Lab File: VX018219.D  
 Acq: 02 Sep 2020 16:34

Instrument : MSVOA\_X  
 ClientSampled : MDL07

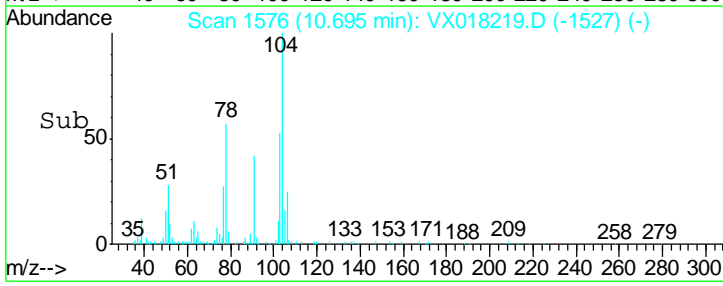
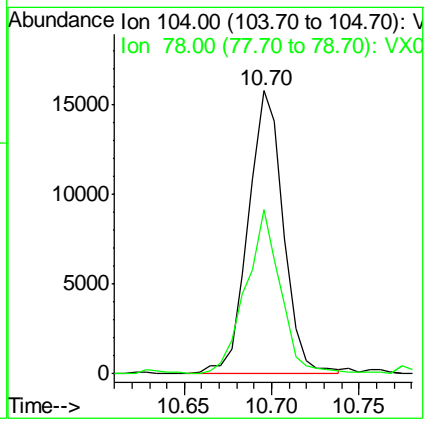
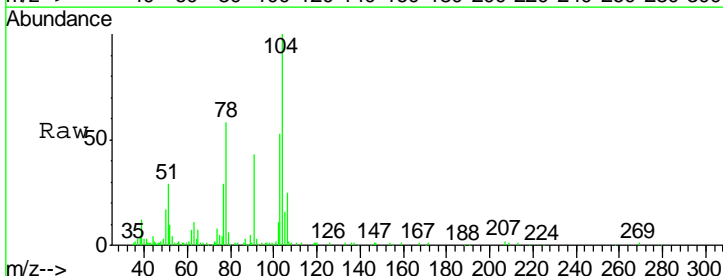
Tgt Ion	Ratio	Lower	Upper
106	100		
91	217.8	150.3	279.1

Manual Integrations  
**APPROVED**  
 MMDadoda  
 9/3/2020 9:54:17 AM

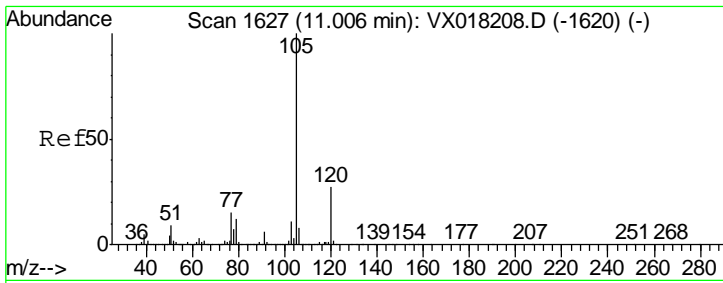


#55  
 Styrene  
 Concen: 1.591 ug/L  
 RT: 10.70 min Scan# 1576  
 Delta R.T. 0.00 min  
 Lab File: VX018219.D  
 Acq: 02 Sep 2020 16:34

Tgt Ion	Ratio	Lower	Upper
104	100		
78	57.9	33.1	61.5

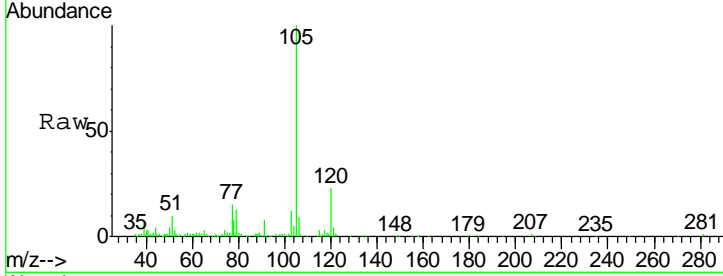






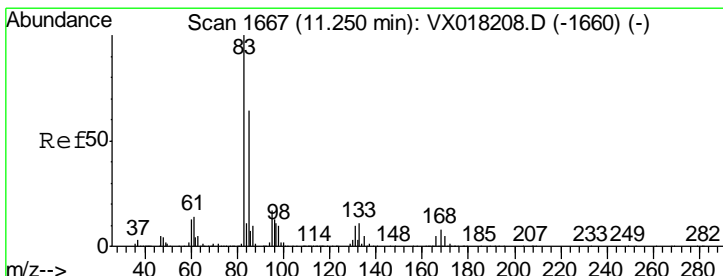
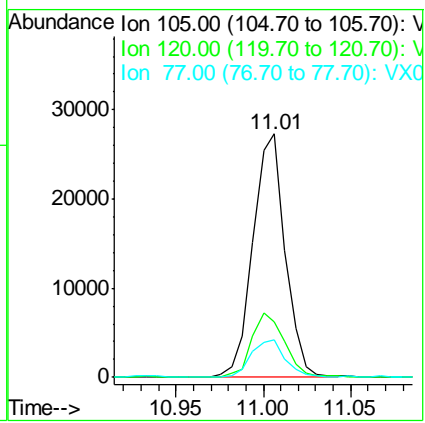
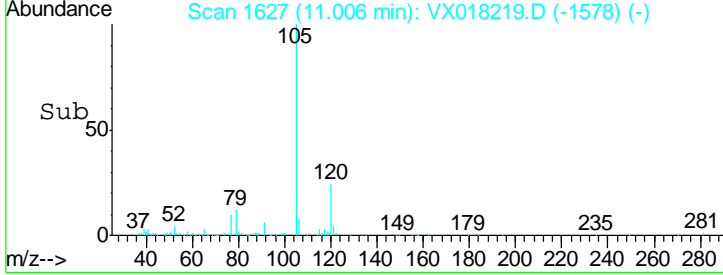
#56  
 Isopropylbenzene  
 Concen: 1.634 ug/L  
 RT: 11.01 min Scan# 1627  
 Delta R.T. 0.00 min  
 Lab File: VX018219.D  
 Acq: 02 Sep 2020 16:34

Instrument : MSVOA\_X  
 ClientSampled : MDL07

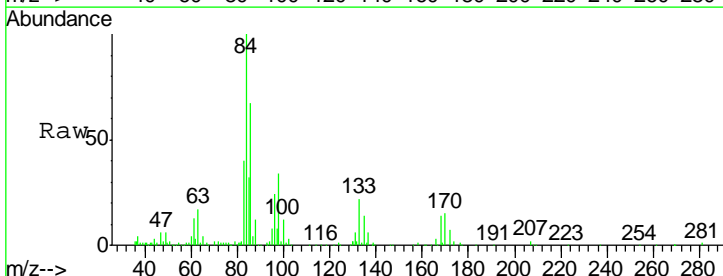


Tgt Ion	Resp	Lower	Upper
105	35021		
120	27.5	21.3	31.9
77	16.4	12.7	19.1

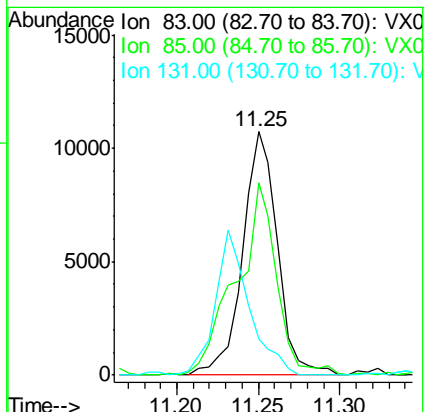
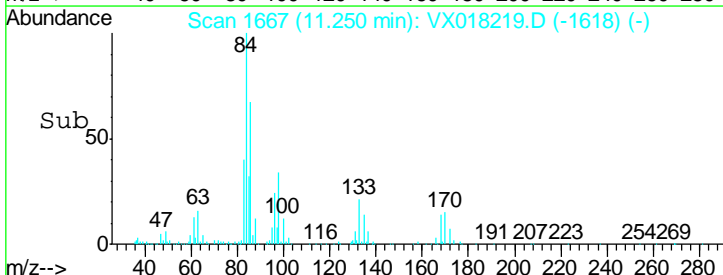
Manual Integrations  
**APPROVED**  
 MMDadoda  
 9/3/2020 9:54:17 AM

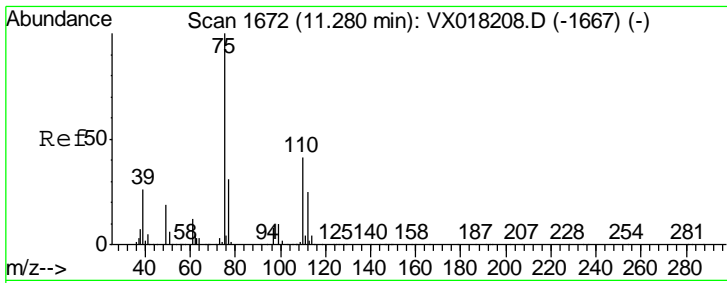


#58  
 1,1,2,2-Tetrachloroethane  
 Concen: 2.223 ug/L  
 RT: 11.25 min Scan# 1667  
 Delta R.T. 0.00 min  
 Lab File: VX018219.D  
 Acq: 02 Sep 2020 16:34



Tgt Ion	Resp	Lower	Upper
83	15942		
85	79.2	44.6	82.8
131	14.9	8.0	12.0#





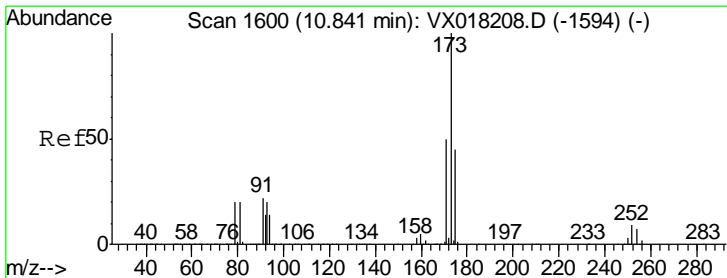
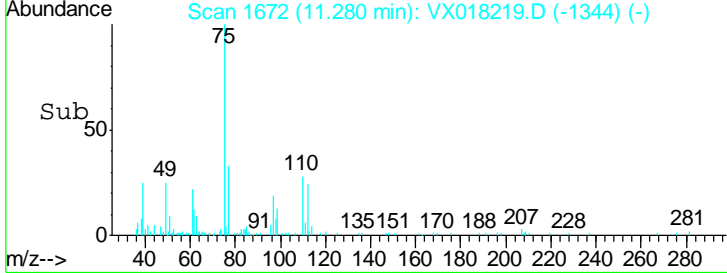
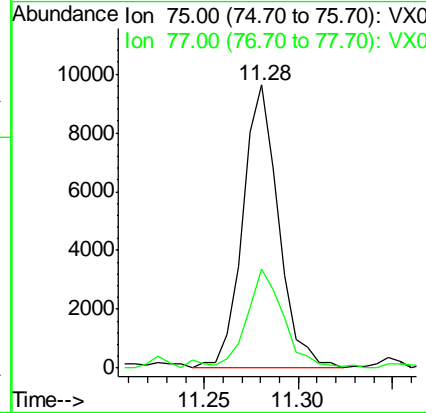
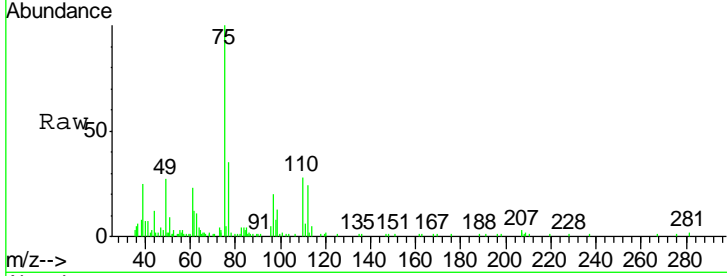
#59  
 1,2,3-Trichloropropane  
 Concen: 2.038 ug/L  
 RT: 11.28 min Scan# 1672  
 Delta R.T. 0.00 min  
 Lab File: VX018219.D  
 Acq: 02 Sep 2020 16:34

Instrument : MSVOA\_X  
 ClientSampled : MDL07

Tgt Ion	Ratio	Lower	Upper
75	100		
77	33.7	25.8	38.8

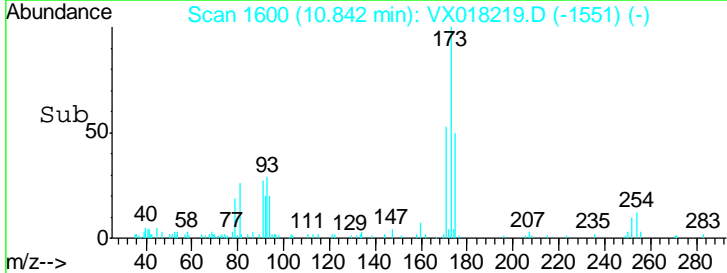
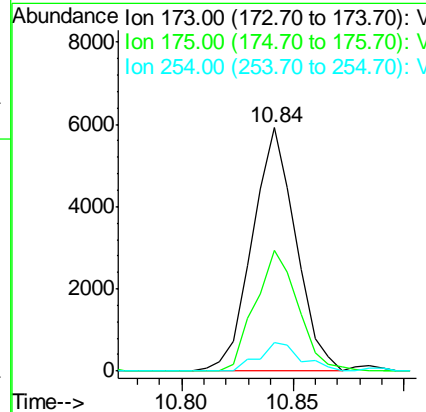
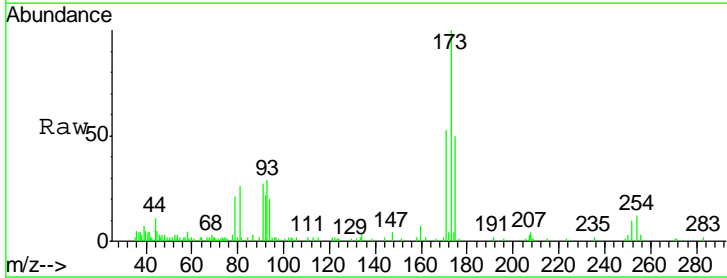
Manual Integrations  
 APPROVED

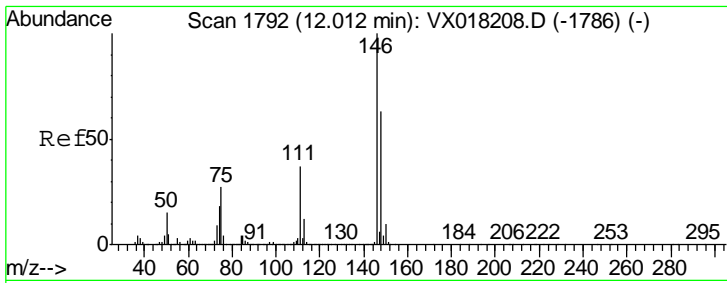
MMDadoda  
 9/3/2020 9:54:17 AM



#61  
 Bromoform  
 Concen: 1.921 ug/L  
 RT: 10.84 min Scan# 1600  
 Delta R.T. 0.00 min  
 Lab File: VX018219.D  
 Acq: 02 Sep 2020 16:34

Tgt Ion	Ratio	Lower	Upper
173	100		
175	49.2	37.9	56.9
254	11.3	6.6	10.0





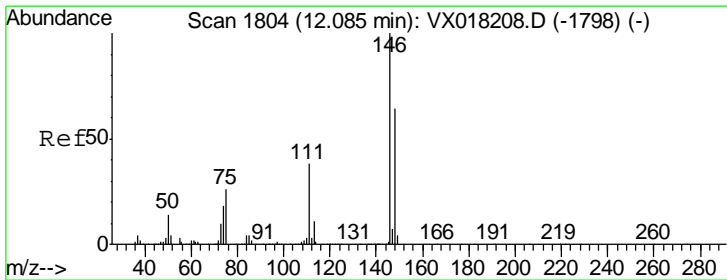
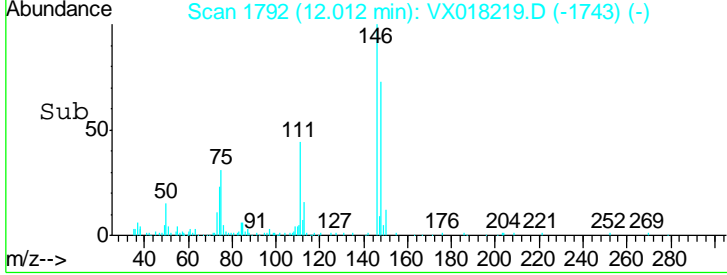
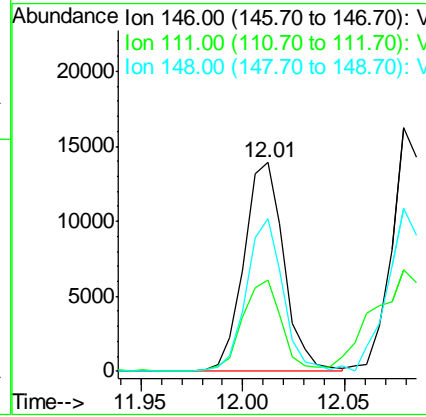
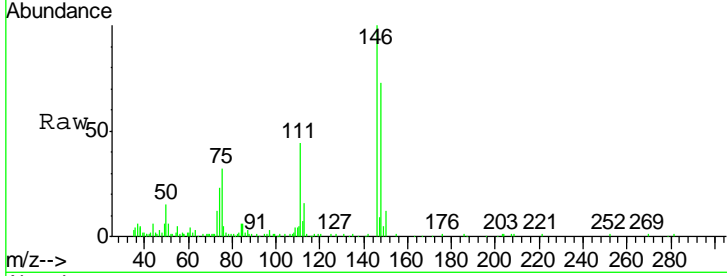
#62  
 1,3-Dichlorobenzene  
 Concen: 1.960 ug/L  
 RT: 12.01 min Scan# 1792  
 Delta R.T. 0.00 min  
 Lab File: VX018219.D  
 Acq: 02 Sep 2020 16:34

Instrument : MSVOA\_X  
 Client Sampled : MDL07

Tgt Ion	Ratio	Lower	Upper
146	100		
111	43.9	26.2	48.6
148	73.0	44.2	82.2

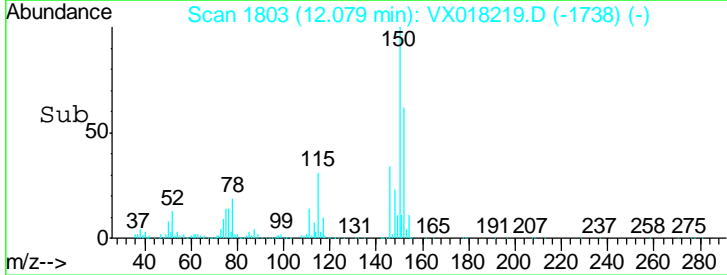
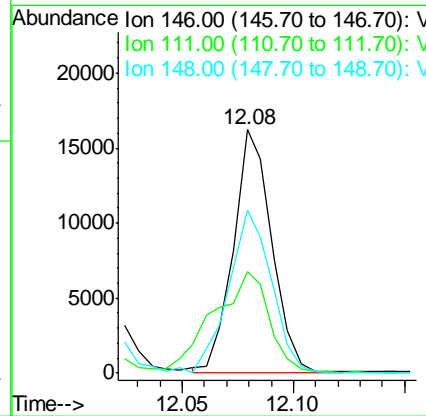
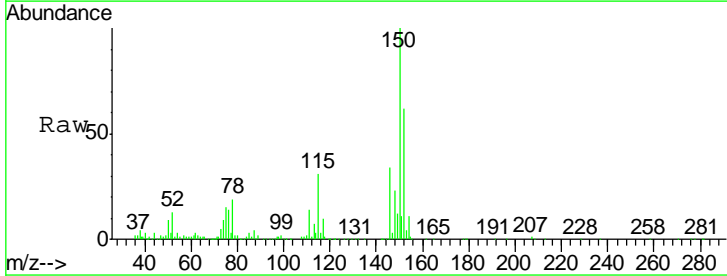
Manual Integrations  
 APPROVED

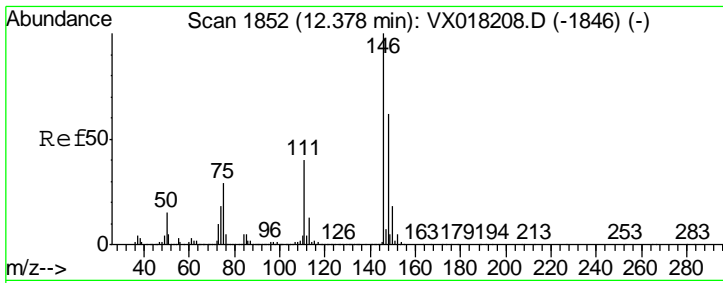
MMDadoda  
 9/3/2020 9:54:17 AM



#63  
 1,4-Dichlorobenzene  
 Concen: 1.977 ug/L  
 RT: 12.08 min Scan# 1803  
 Delta R.T. -0.01 min  
 Lab File: VX018219.D  
 Acq: 02 Sep 2020 16:34

Tgt Ion	Ratio	Lower	Upper
146	100		
111	41.8	26.5	49.1
148	66.7	44.5	82.7



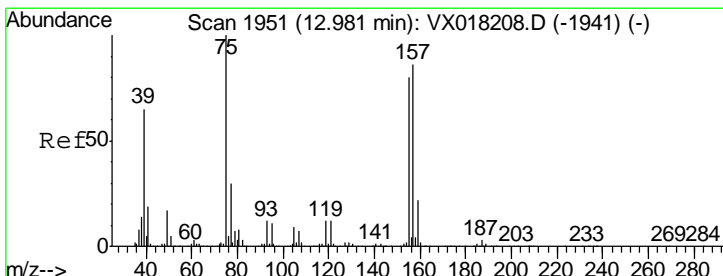
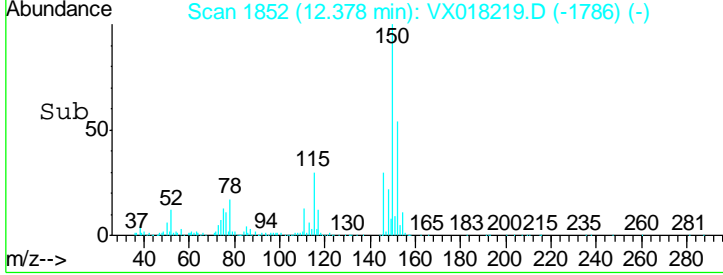
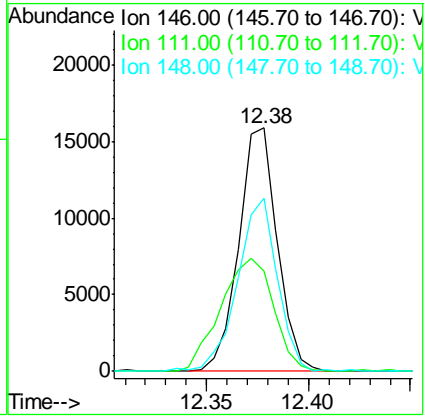
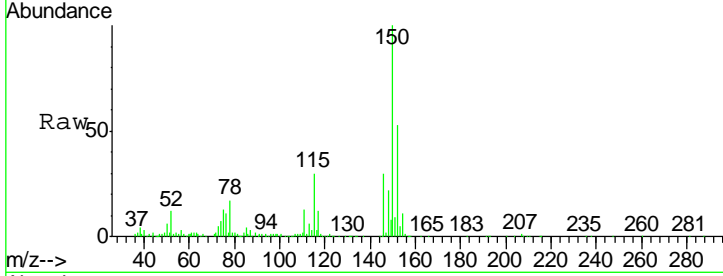


#65  
 1,2-Dichlorobenzene  
 Concen: 2.221 ug/L  
 RT: 12.38 min Scan# 1852  
 Delta R.T. 0.00 min  
 Lab File: VX018219.D  
 Acq: 02 Sep 2020 16:34

Instrument : MSVOA\_X  
 Client Sampled : MDL07

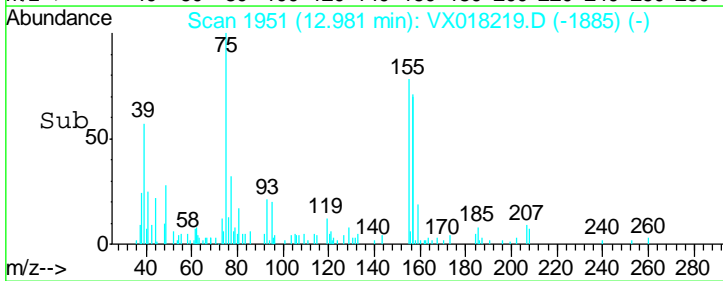
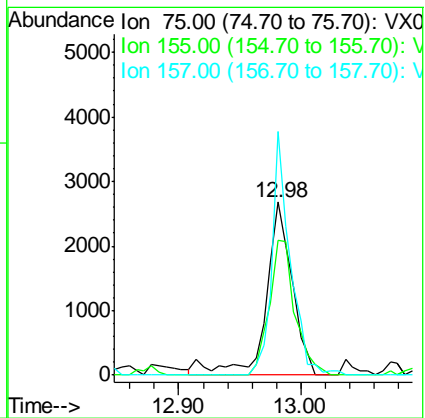
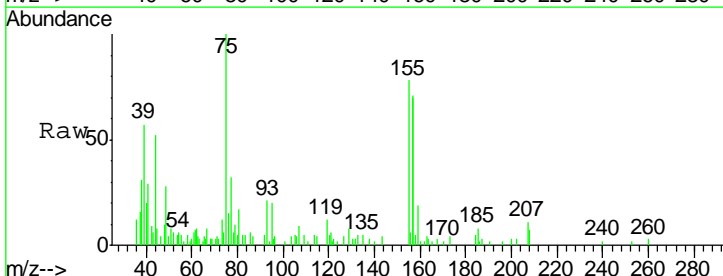
Tgt Ion	Resp	Lower	Upper
146	20781		
111	41.4	32.4	48.6
148	71.2	49.7	74.5

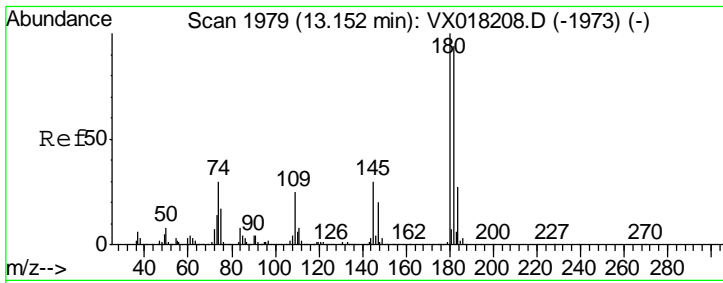
Manual Integrations APPROVED  
 MMDadoda  
 9/3/2020 9:54:17 AM



#66  
 1,2-Dibromo-3-chloropropane  
 Concen: 2.291 ug/L  
 RT: 12.98 min Scan# 1951  
 Delta R.T. 0.00 min  
 Lab File: VX018219.D  
 Acq: 02 Sep 2020 16:34

Tgt Ion	Resp	Lower	Upper
75	4010		
155	77.8	63.8	95.8
157	141.0	68.5	102.7#





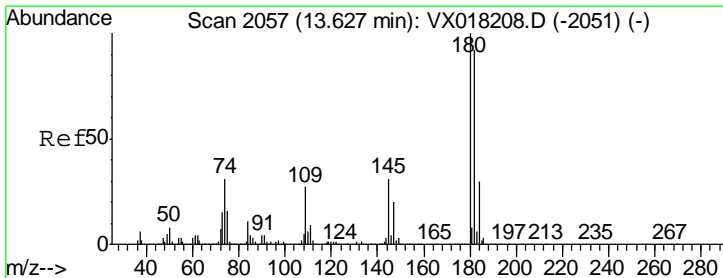
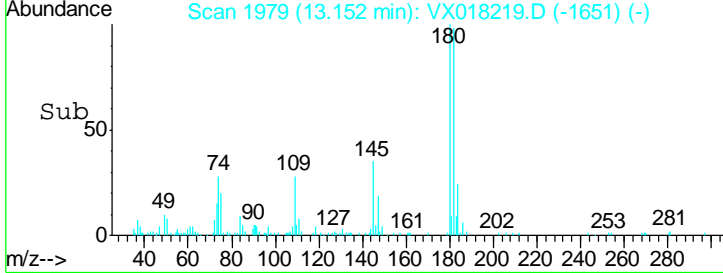
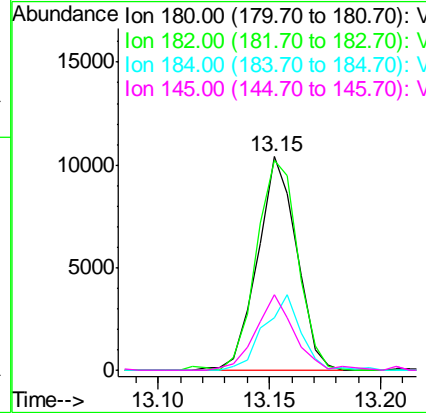
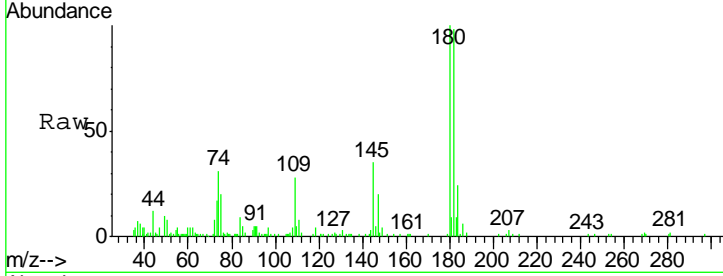
#67  
 1,3,5-Trichlorobenzene  
 Concen: 2.006 ug/L  
 RT: 13.15 min Scan# 1979  
 Delta R.T. 0.00 min  
 Lab File: VX018219.D  
 Acq: 02 Sep 2020 16:34

Instrument : MSVOA\_X  
 ClientSampled : MDL07

Tgt Ion	Resp	Lower	Upper
180	12718		
182	103.7	77.1	115.7
184	32.6	23.8	35.6
145	34.1	24.4	36.6

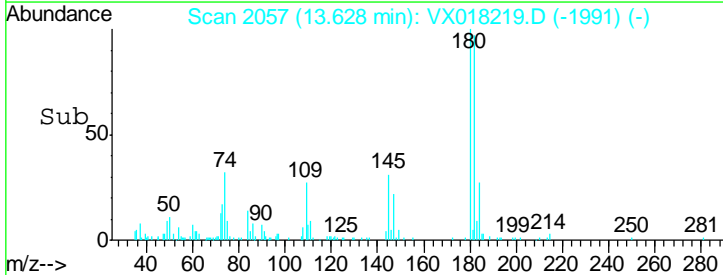
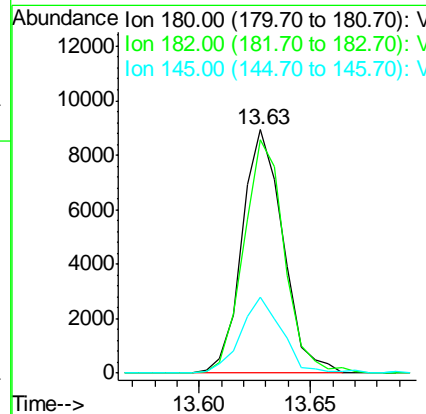
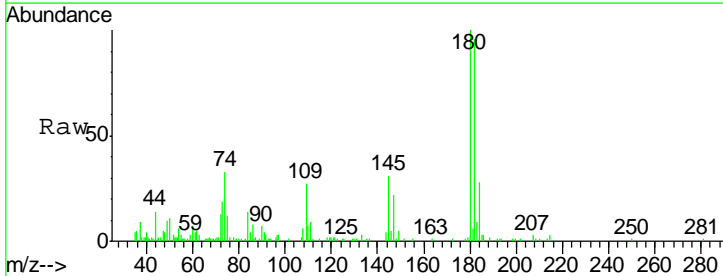
Manual Integrations  
 APPROVED

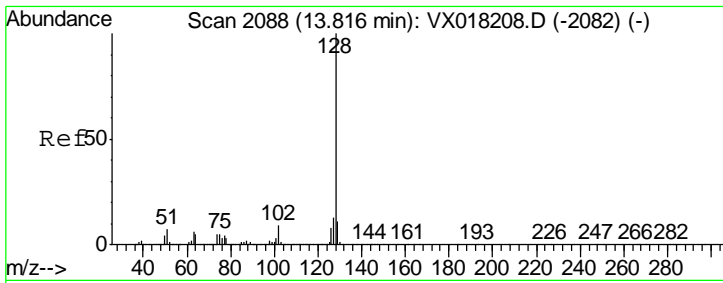
MMDadoda  
 9/3/2020 9:54:17 AM



#68  
 1,2,4-trichlorobenzene  
 Concen: 1.966 ug/L  
 RT: 13.63 min Scan# 2057  
 Delta R.T. 0.00 min  
 Lab File: VX018219.D  
 Acq: 02 Sep 2020 16:34

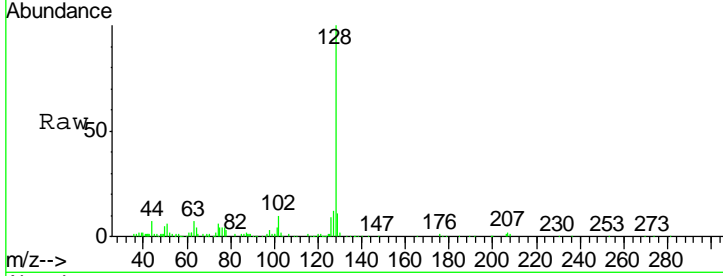
Tgt Ion	Resp	Lower	Upper
180	11499		
182	95.1	74.1	111.1
145	30.9	25.0	37.4





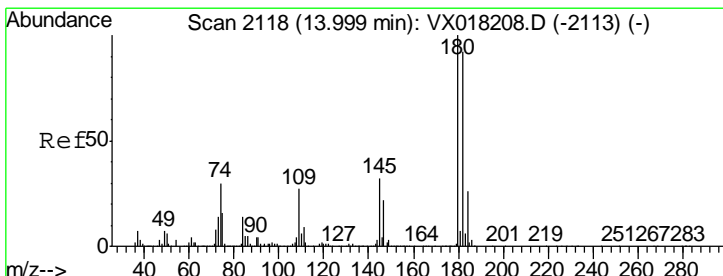
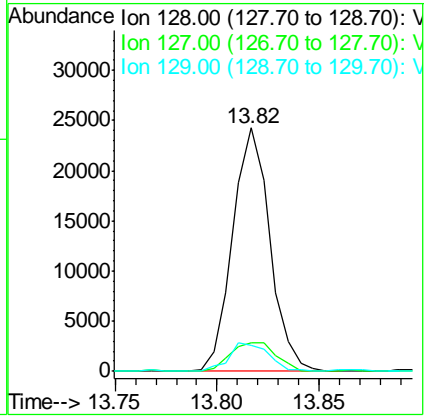
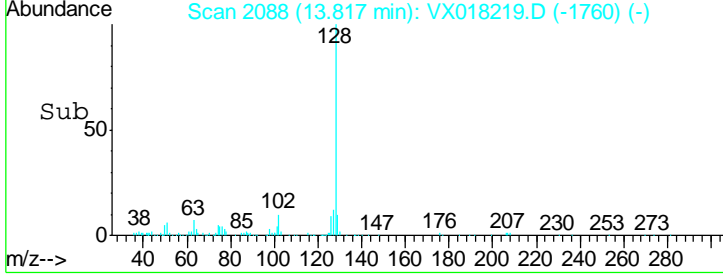
#69  
 Naphthalene  
 Concen: 1.662 ug/L  
 RT: 13.82 min Scan# 2088  
 Delta R.T. 0.00 min  
 Lab File: VX018219.D  
 Acq: 02 Sep 2020 16:34

Instrument : MSVOA\_X  
 Client Sampled : MDL07

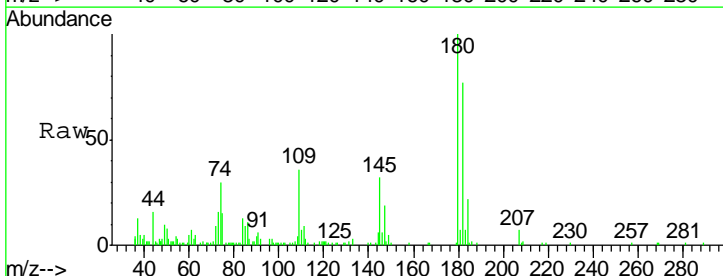


Tgt Ion	Resp	Lower	Upper
128	30738		
127	14.4	10.0	15.0
129	12.4	8.6	12.8

Manual Integrations APPROVED  
 MMDadoda  
 9/3/2020 9:54:17 AM



#70  
 1,2,3-Trichlorobenzene  
 Concen: 1.959 ug/L  
 RT: 14.00 min Scan# 2118  
 Delta R.T. 0.00 min  
 Lab File: VX018219.D  
 Acq: 02 Sep 2020 16:34



Tgt Ion	Resp	Lower	Upper
180	11463		
182	87.8	77.0	115.4
145	32.5	27.2	40.8

