

Data Path : Z:\voasrv\HPCHEM1\MSVOA\_X\Data\VX090223\  
 Data File : VX037495.D  
 Acq On : 02 Sep 2023 20:02  
 Operator : JC/MD  
 Sample : 04270-01  
 Misc : 5.0mL/MSVOA\_X/WATER  
 ALS Vial : 23 Sample Multiplier: 1

Instrument :  
 MSVOA\_X  
 ClientSampleId :  
 OW-05B-71.7-083123

Quant Time: Sep 04 04:33:21 2023  
 Quant Method : Z:\voasrv\HPCHEM1\MSVOA\_X\Method\82X081723W.M  
 Quant Title : SW846 8260  
 QLast Update : Fri Aug 18 09:30:38 2023  
 Response via : Initial Calibration

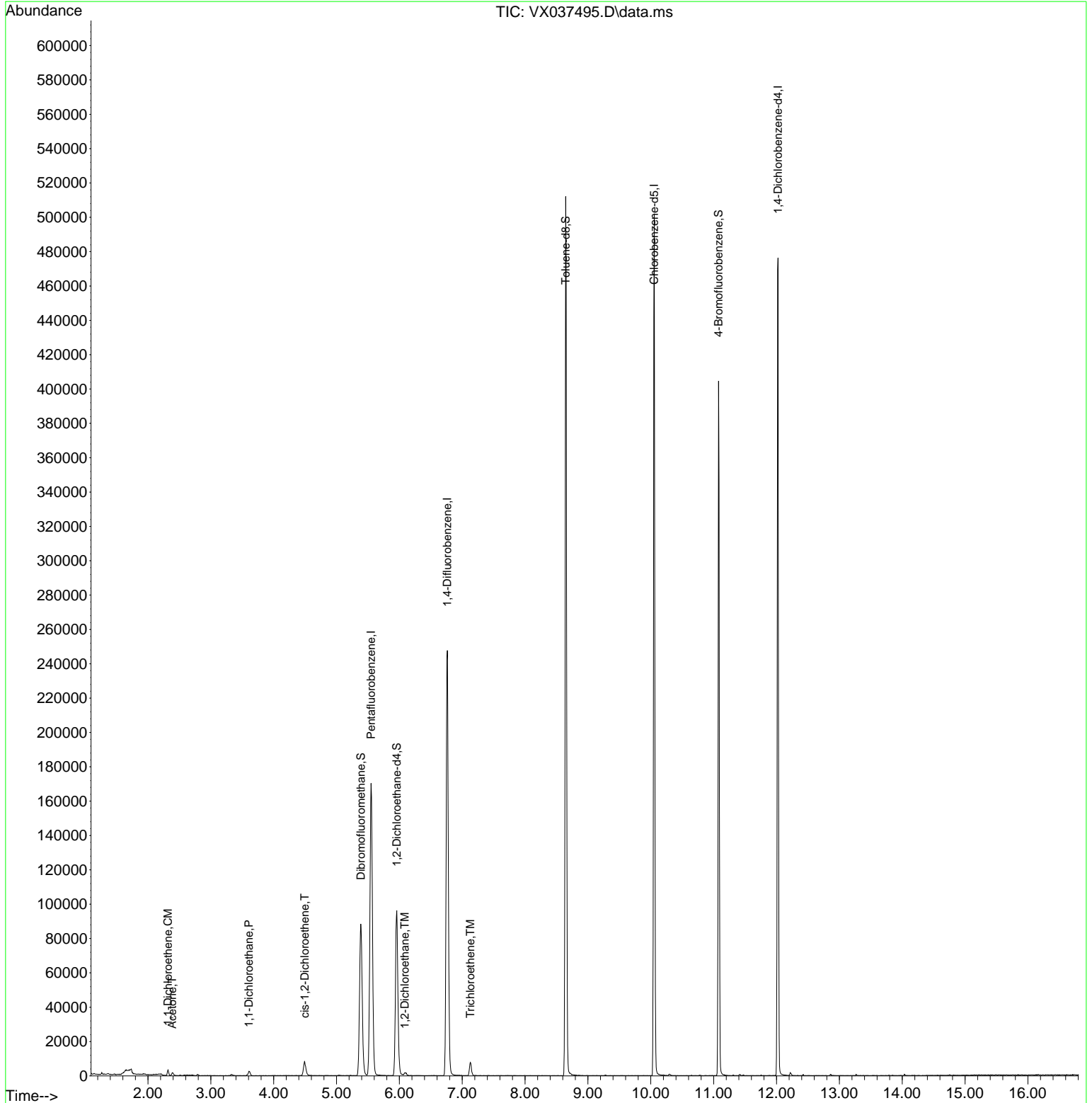
Compound	R.T.	QIon	Response	Conc	Units	Dev(Min)
-----						
Internal Standards						
1) Pentafluorobenzene	5.550	168	161627	50.000	ug/l	0.00
34) 1,4-Difluorobenzene	6.763	114	265799	50.000	ug/l	0.00
63) Chlorobenzene-d5	10.055	117	237816	50.000	ug/l	0.00
72) 1,4-Dichlorobenzene-d4	12.024	152	105549	50.000	ug/l	0.00
System Monitoring Compounds						
33) 1,2-Dichloroethane-d4	5.958	65	95669	41.057	ug/l	0.00
Spiked Amount	50.000	Range 78 - 117	Recovery =	82.120%		
35) Dibromofluoromethane	5.385	113	79683	45.266	ug/l	0.00
Spiked Amount	50.000	Range 75 - 124	Recovery =	90.540%		
50) Toluene-d8	8.647	98	311488	48.782	ug/l	0.00
Spiked Amount	50.000	Range 92 - 112	Recovery =	97.560%		
62) 4-Bromofluorobenzene	11.079	95	112394	44.790	ug/l	0.00
Spiked Amount	50.000	Range 83 - 123	Recovery =	89.580%		
Target Compounds						
						Qvalue
12) 1,1-Dichloroethene	2.319	96	1115	0.670	ug/l #	76
16) Acetone	2.386	43	1976	2.168	ug/l	92
24) 1,1-Dichloroethane	3.605	63	3037	0.916	ug/l	98
27) cis-1,2-Dichloroethene	4.495	96	5513	2.473	ug/l	79
42) 1,2-Dichloroethane	6.086	62	2109	0.750	ug/l	98
44) Trichloroethene	7.129	130	3254	1.600	ug/l	91
-----						

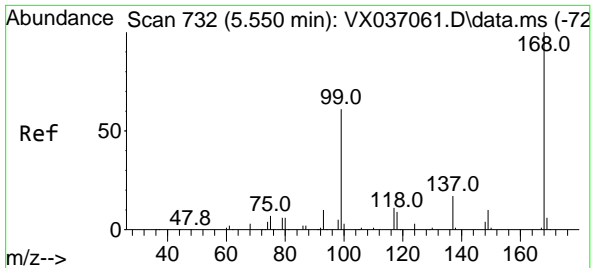
(#) = qualifier out of range (m) = manual integration (+) = signals summed

Data Path : Z:\voasrv\HPCHEM1\MSVOA\_X\Data\VX090223\  
 Data File : VX037495.D  
 Acq On : 02 Sep 2023 20:02  
 Operator : JC/MD  
 Sample : 04270-01  
 Misc : 5.0mL/MSVOA\_X/WATER  
 ALS Vial : 23 Sample Multiplier: 1

Instrument :  
 MSVOA\_X  
 ClientSampleId :  
 OW-05B-71.7-083123

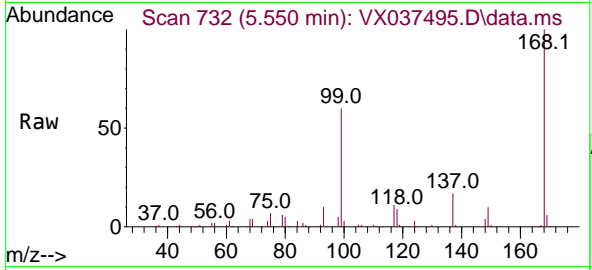
Quant Time: Sep 04 04:33:21 2023  
 Quant Method : Z:\voasrv\HPCHEM1\MSVOA\_X\Method\82X081723W.M  
 Quant Title : SW846 8260  
 QLast Update : Fri Aug 18 09:30:38 2023  
 Response via : Initial Calibration



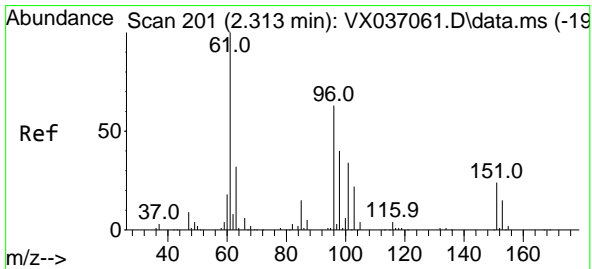
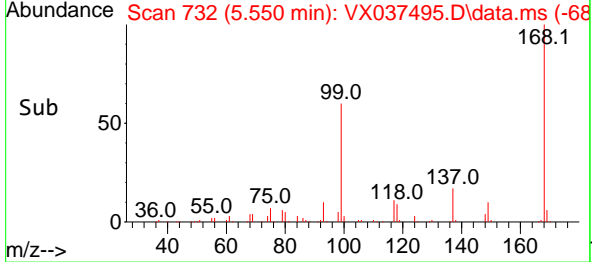
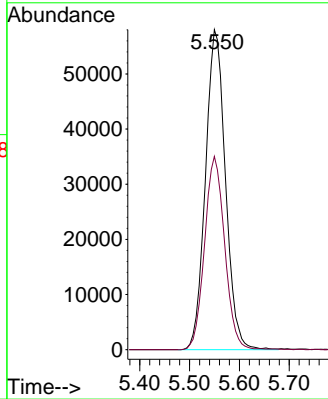


#1  
 Pentafluorobenzene  
 Concen: 50.000 ug/l  
 RT: 5.550 min Scan# 71  
 Delta R.T. -0.000 min  
 Lab File: VX037495.D  
 Acq: 02 Sep 2023 20:02

Instrument : MSVOA\_X  
 ClientSampleId : OW-05B-71.7-083123

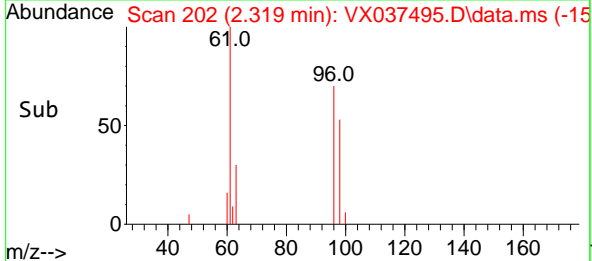
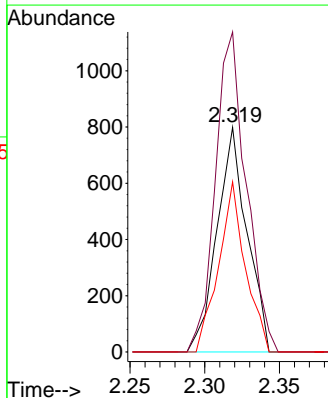
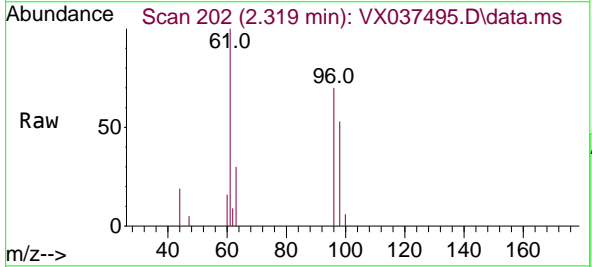


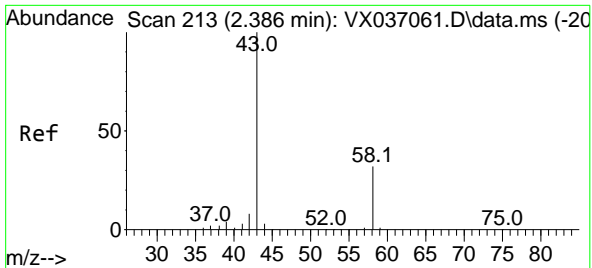
Tgt Ion:168 Resp: 161627  
 Ion Ratio Lower Upper  
 168 100  
 99 60.4 56.6 85.0



#12  
 1,1-Dichloroethene  
 Concen: 0.670 ug/l  
 RT: 2.319 min Scan# 202  
 Delta R.T. 0.006 min  
 Lab File: VX037495.D  
 Acq: 02 Sep 2023 20:02

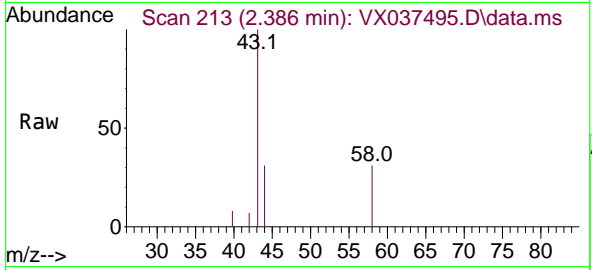
Tgt Ion: 96 Resp: 1115  
 Ion Ratio Lower Upper  
 96 100  
 61 142.4 144.6 216.8#  
 98 75.7 50.4 75.6#



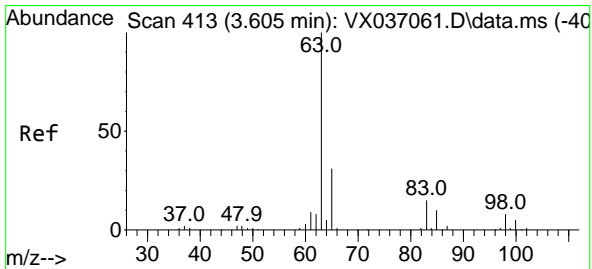
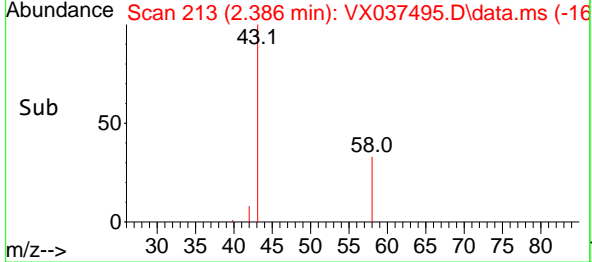
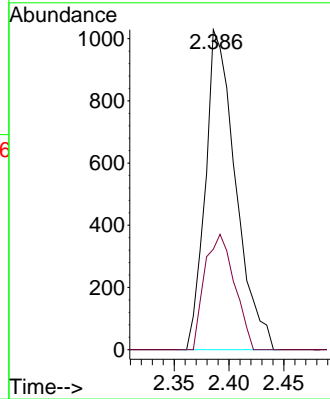


#16  
 Acetone  
 Concen: 2.168 ug/l  
 RT: 2.386 min Scan# 216  
 Delta R.T. -0.000 min  
 Lab File: VX037495.D  
 Acq: 02 Sep 2023 20:02

Instrument : MSVOA\_X  
 ClientSampleId : OW-05B-71.7-083123

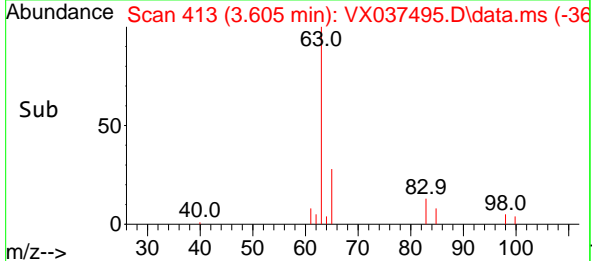
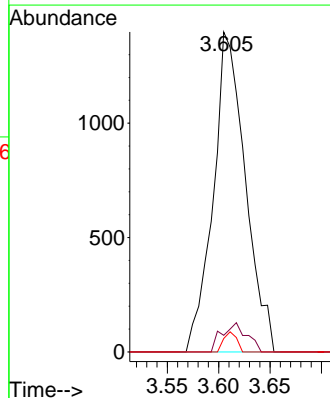
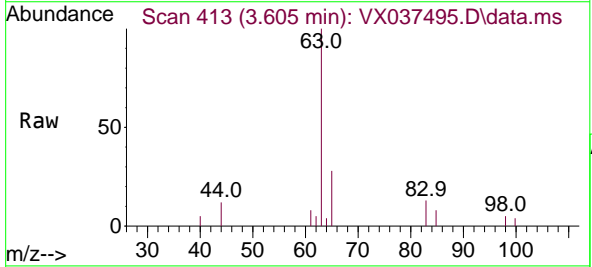


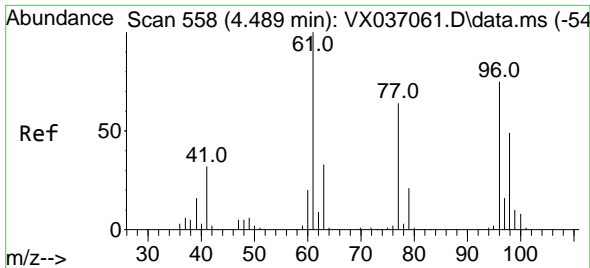
Tgt Ion: 43 Resp: 1976  
 Ion Ratio Lower Upper  
 43 100  
 58 31.4 21.9 32.9



#24  
 1,1-Dichloroethane  
 Concen: 0.916 ug/l  
 RT: 3.605 min Scan# 413  
 Delta R.T. -0.000 min  
 Lab File: VX037495.D  
 Acq: 02 Sep 2023 20:02

Tgt Ion: 63 Resp: 3037  
 Ion Ratio Lower Upper  
 63 100  
 98 5.2 3.3 9.8  
 100 4.2 2.1 6.5

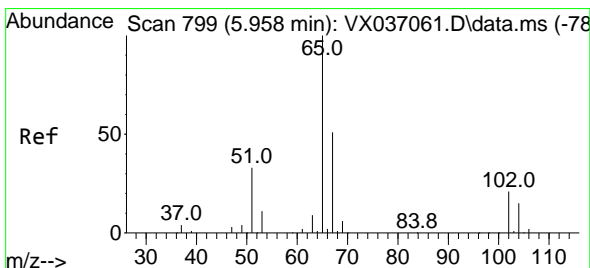
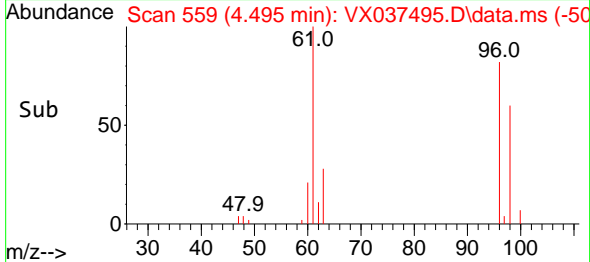
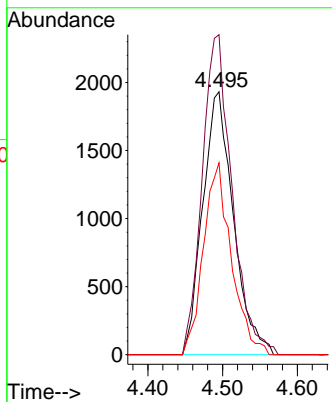
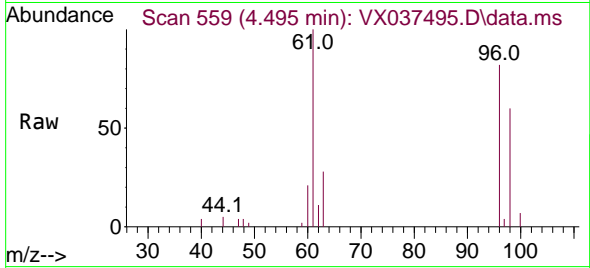




#27  
 cis-1,2-Dichloroethene  
 Concen: 2.473 ug/l  
 RT: 4.495 min Scan# 511  
 Delta R.T. 0.006 min  
 Lab File: VX037495.D  
 Acq: 02 Sep 2023 20:02

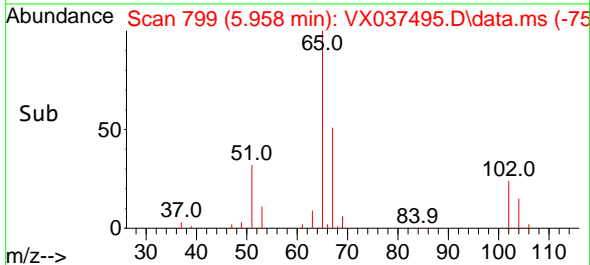
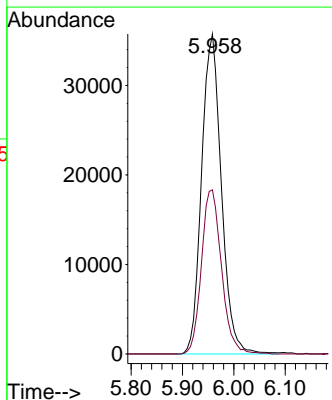
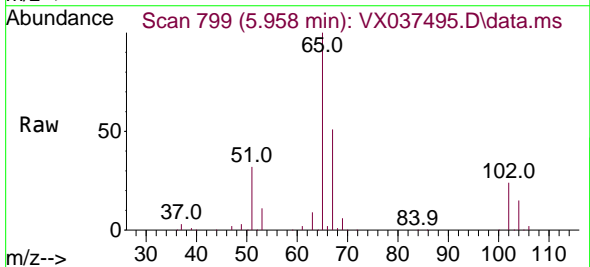
Instrument : MSVOA\_X  
 ClientSampleId : OW-05B-71.7-083123

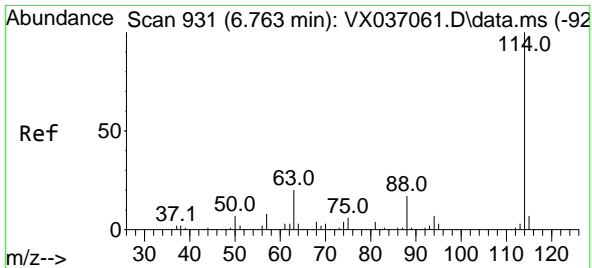
Tgt Ion: 96 Resp: 5513  
 Ion Ratio Lower Upper  
 96 100  
 61 118.3 0.0 312.2  
 98 66.4 0.0 129.0



#33  
 1,2-Dichloroethane-d4  
 Concen: 41.057 ug/l  
 RT: 5.958 min Scan# 799  
 Delta R.T. -0.000 min  
 Lab File: VX037495.D  
 Acq: 02 Sep 2023 20:02

Tgt Ion: 65 Resp: 95669  
 Ion Ratio Lower Upper  
 65 100  
 67 52.0 0.0 100.2



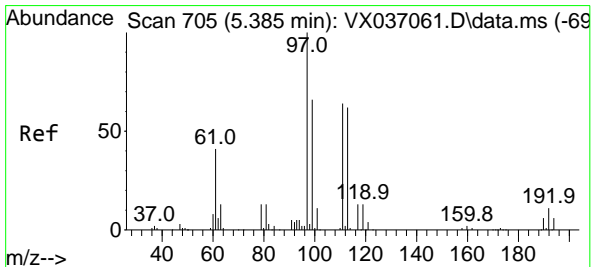
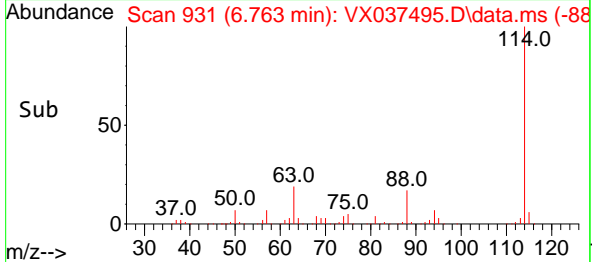
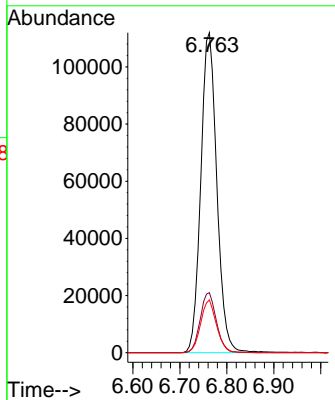
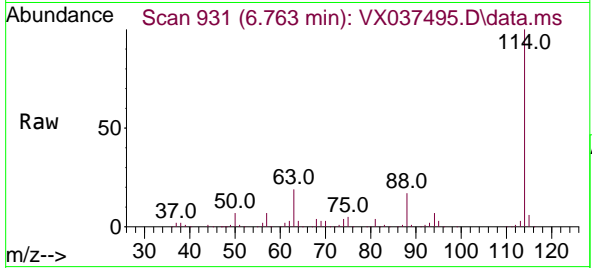


#34  
 1,4-Difluorobenzene  
 Concen: 50.000 ug/l  
 RT: 6.763 min Scan# 911  
 Delta R.T. -0.000 min  
 Lab File: VX037495.D  
 Acq: 02 Sep 2023 20:02

Instrument : MSVOA\_X  
 ClientSampleId : OW-05B-71.7-083123

Tgt Ion:114 Resp: 265799

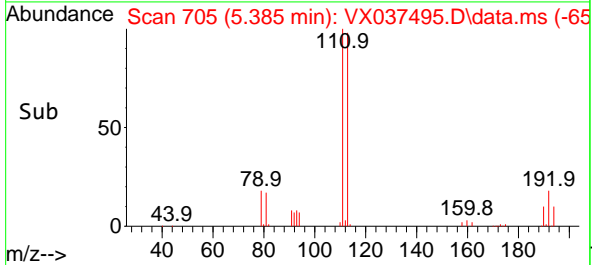
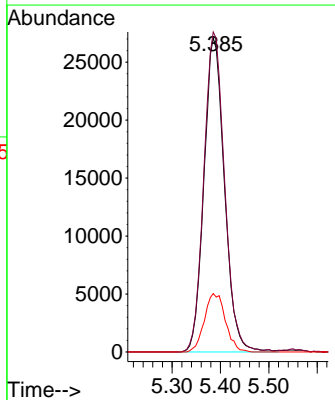
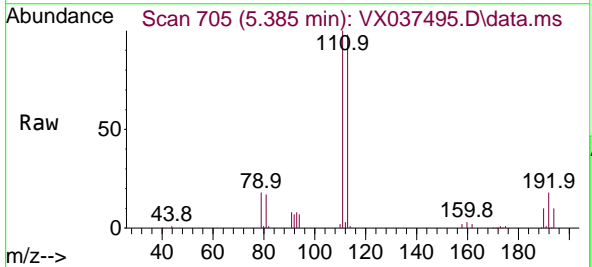
Ion	Ratio	Lower	Upper
114	100		
63	18.7	0.0	45.0
88	16.5	0.0	36.6

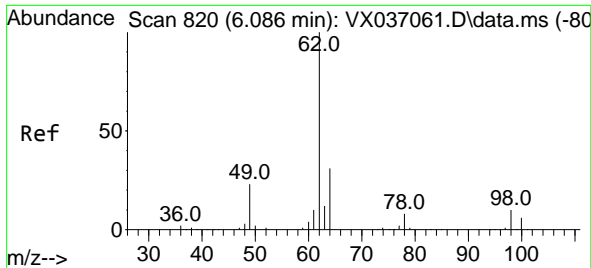


#35  
 Dibromofluoromethane  
 Concen: 45.266 ug/l  
 RT: 5.385 min Scan# 705  
 Delta R.T. -0.000 min  
 Lab File: VX037495.D  
 Acq: 02 Sep 2023 20:02

Tgt Ion:113 Resp: 79683

Ion	Ratio	Lower	Upper
113	100		
111	103.1	82.9	124.3
192	19.1	13.3	19.9

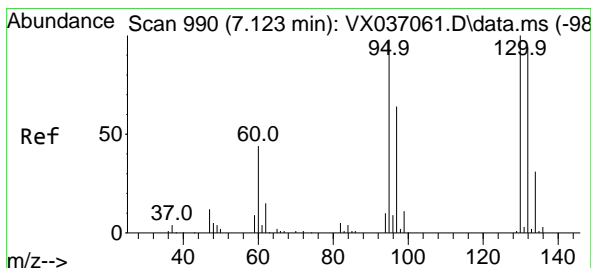
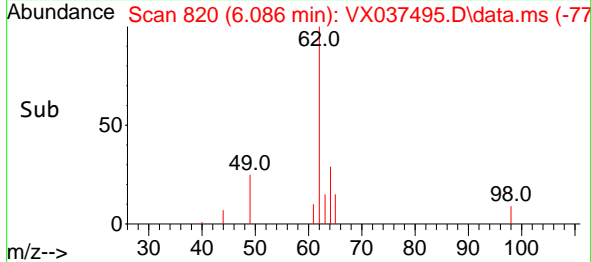
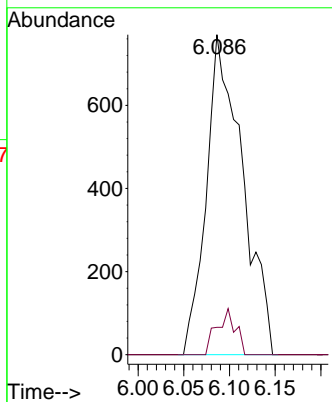
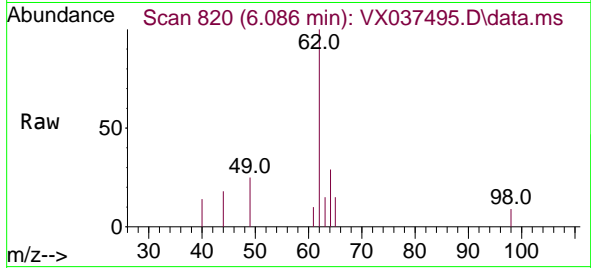




#42  
 1,2-Dichloroethane  
 Concen: 0.750 ug/l  
 RT: 6.086 min Scan# 81  
 Delta R.T. -0.000 min  
 Lab File: VX037495.D  
 Acq: 02 Sep 2023 20:02

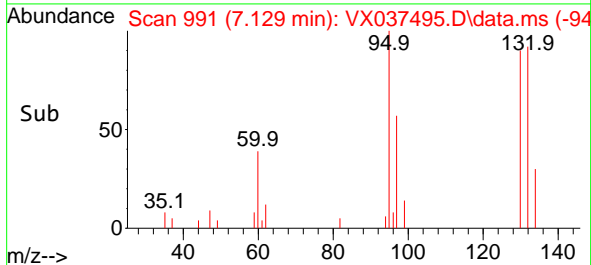
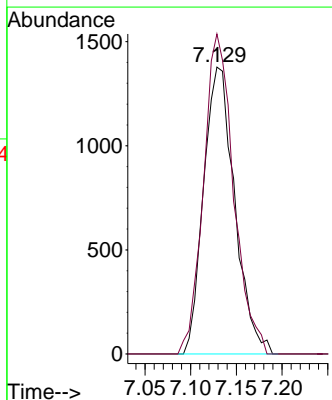
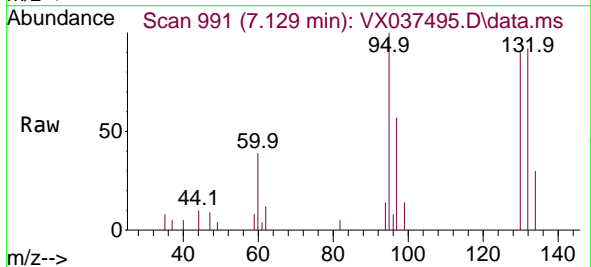
Instrument : MSVOA\_X  
 ClientSampleId : OW-05B-71.7-083123

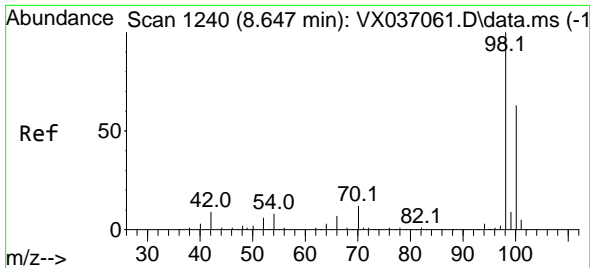
Tgt Ion: 62 Resp: 2109  
 Ion Ratio Lower Upper  
 62 100  
 98 7.4 0.0 16.0



#44  
 Trichloroethene  
 Concen: 1.600 ug/l  
 RT: 7.129 min Scan# 991  
 Delta R.T. 0.006 min  
 Lab File: VX037495.D  
 Acq: 02 Sep 2023 20:02

Tgt Ion: 130 Resp: 3254  
 Ion Ratio Lower Upper  
 130 100  
 95 111.5 0.0 204.4

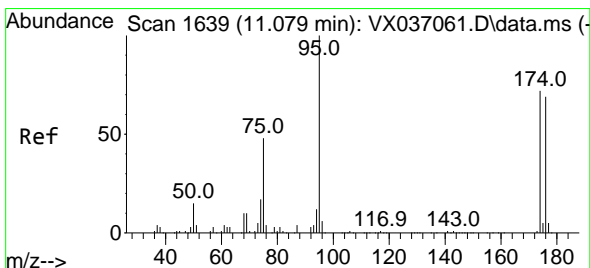
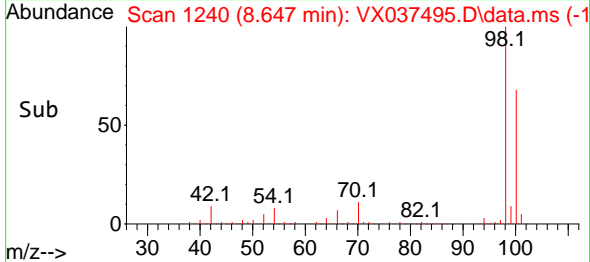
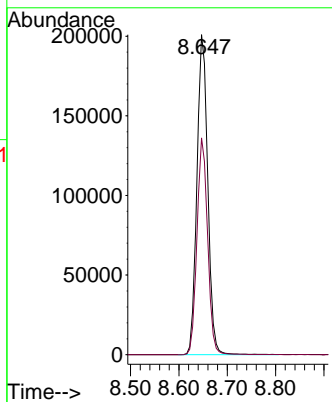
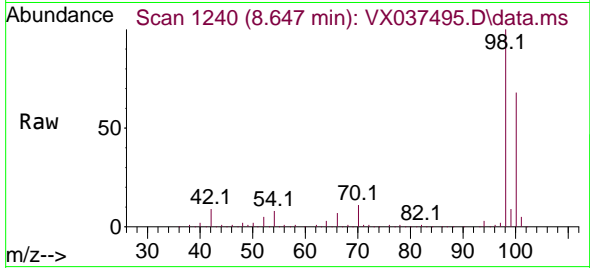




#50  
 Toluene-d8  
 Concen: 48.782 ug/l  
 RT: 8.647 min Scan# 11  
 Delta R.T. -0.000 min  
 Lab File: VX037495.D  
 Acq: 02 Sep 2023 20:02

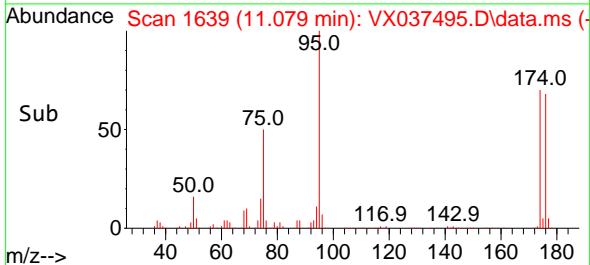
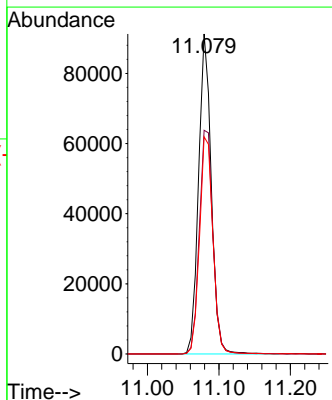
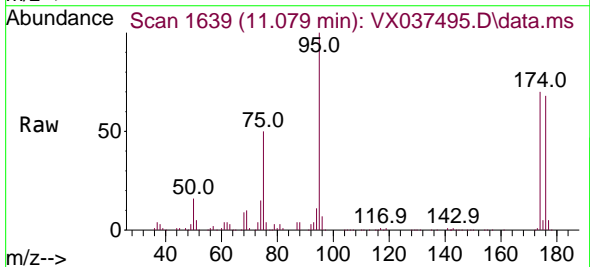
Instrument : MSVOA\_X  
 ClientSampleId : OW-05B-71.7-083123

Tgt Ion: 98 Resp: 311488  
 Ion Ratio Lower Upper  
 98 100  
 100 66.6 53.1 79.7

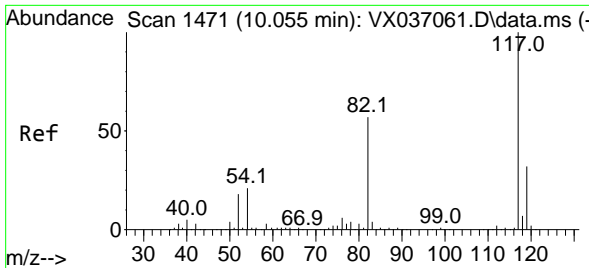


#62  
 4-Bromofluorobenzene  
 Concen: 44.790 ug/l  
 RT: 11.079 min Scan# 1639  
 Delta R.T. -0.000 min  
 Lab File: VX037495.D  
 Acq: 02 Sep 2023 20:02

Tgt Ion: 95 Resp: 112394  
 Ion Ratio Lower Upper  
 95 100  
 174 75.0 0.0 135.6  
 176 71.7 0.0 131.0





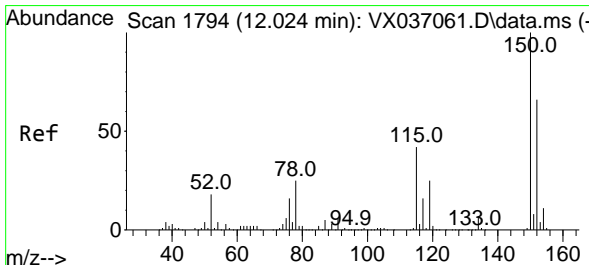
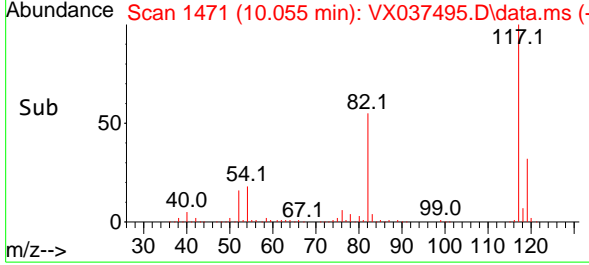
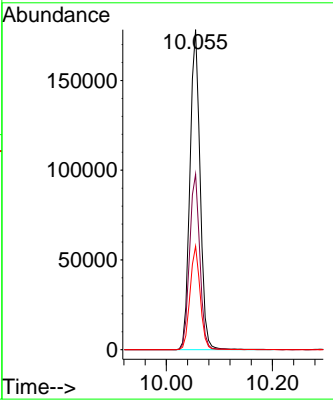
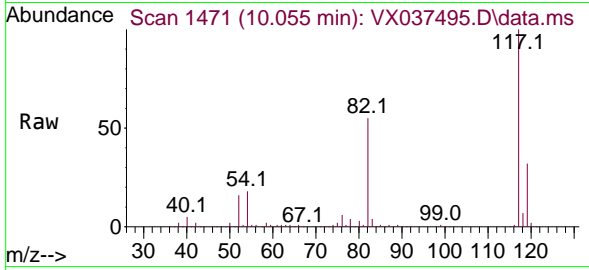


#63  
 Chlorobenzene-d5  
 Concen: 50.000 ug/l  
 RT: 10.055 min Scan# 1471  
 Delta R.T. -0.000 min  
 Lab File: VX037495.D  
 Acq: 02 Sep 2023 20:02

Instrument : MSVOA\_X  
 ClientSampleId : OW-05B-71.7-083123

Tgt Ion:117 Resp: 237816

Ion	Ratio	Lower	Upper
117	100		
82	54.9	46.2	69.4
119	32.3	25.5	38.3



#72  
 1,4-Dichlorobenzene-d4  
 Concen: 50.000 ug/l  
 RT: 12.024 min Scan# 1794  
 Delta R.T. -0.000 min  
 Lab File: VX037495.D  
 Acq: 02 Sep 2023 20:02

Tgt Ion:152 Resp: 105549

Ion	Ratio	Lower	Upper
152	100		
115	63.0	43.3	129.9
150	156.0	0.0	345.0

