

Data Path : Z:\voasrv\HPCHEM1\MSVOA_X\Data\VX090223\
 Data File : VX037480.D
 Acq On : 02 Sep 2023 14:04
 Operator : JC/MD
 Sample : 04252-04
 Misc : 5.0mL/MSVOA_X/WATER
 ALS Vial : 8 Sample Multiplier: 1

Instrument :
 MSVOA_X
 ClientSampleId :
 MW-04-12-083023

Integration Parameters: RTEINT.P

Integrator: RTE
 Smoothing : ON Filtering: 5
 Sampling : 1 Min Area: 3 % of largest Peak
 Start Thrs: 0.2 Max Peaks: 100
 Stop Thrs : 0 Peak Location: TOP

If leading or trailing edge < 100 prefer < Baseline drop else tangent >
 Peak separation: 5

Method : Z:\voasrv\HPCHEM1\MSVOA_X\Method\82X081723W.M
 Title : SW846 8260

Signal : TIC: VX037480.D\data.ms

peak #	R.T. min	first scan	max scan	last scan	PK TY	peak height	corr. area	corr. % max.	% of total
1	5.385	693	705	721	rBV2	91636	265956	32.91%	6.238%
2	5.550	721	732	748	rVB	171416	485933	60.13%	11.398%
3	5.952	788	798	818	rBV	97926	262303	32.46%	6.153%
4	6.763	921	931	949	rBV	253030	607522	75.17%	14.250%
5	8.647	1234	1240	1250	rBV	527022	808174	100.00%	18.957%
6	10.055	1465	1471	1489	rBV	512181	689245	85.28%	16.167%
7	11.079	1634	1639	1657	rBV	414705	514302	63.64%	12.064%
8	12.018	1788	1793	1805	rBV	486724	629777	77.93%	14.772%

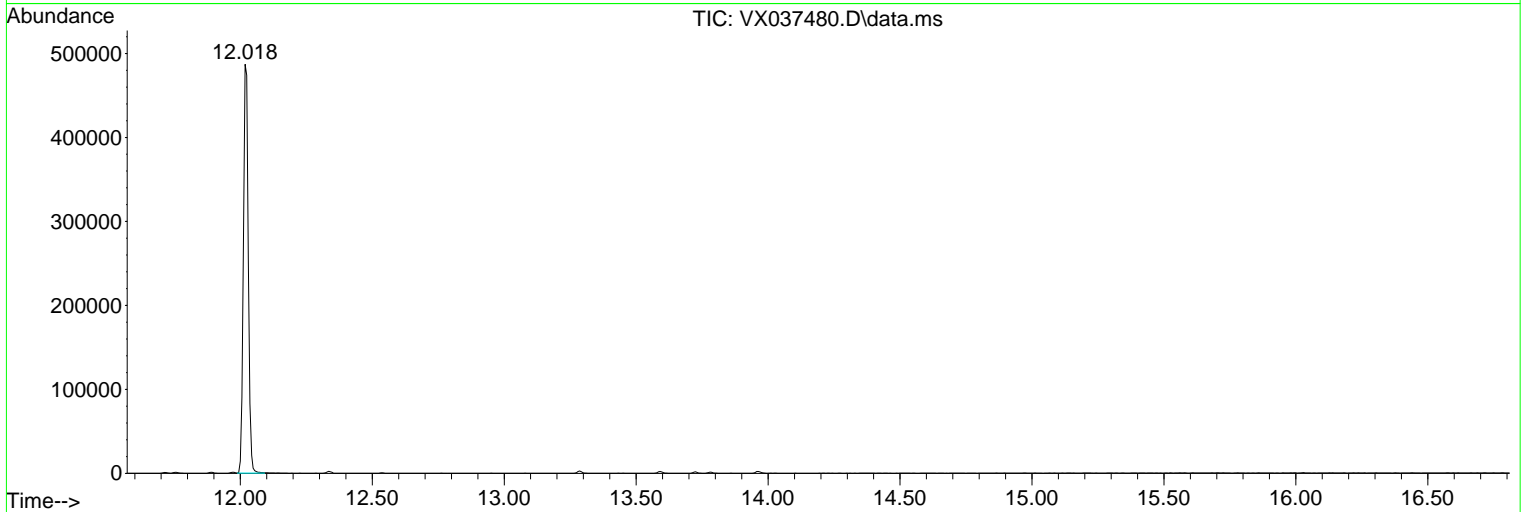
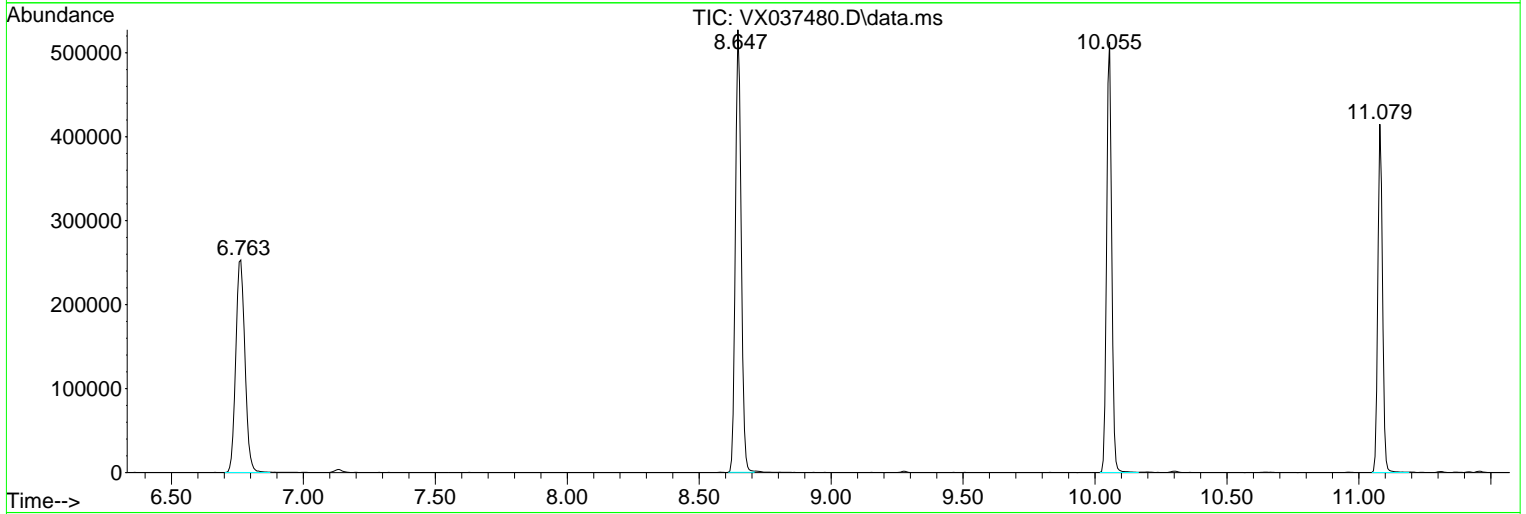
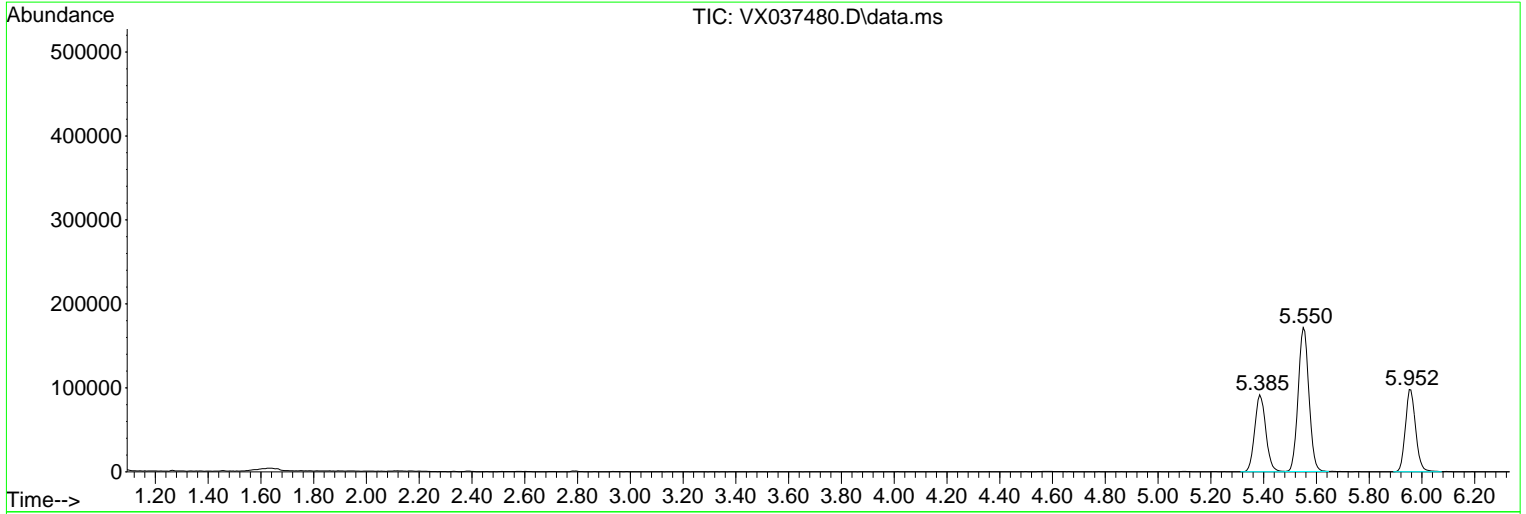
Sum of corrected areas: 4263212

Data Path : Z:\voasrv\HPCHEM1\MSVOA_X\Data\VX090223\
 Data File : VX037480.D
 Acq On : 02 Sep 2023 14:04
 Operator : JC/MD
 Sample : 04252-04
 Misc : 5.0mL/MSVOA_X/WATER
 ALS Vial : 8 Sample Multiplier: 1

Instrument :
 MSVOA_X
 ClientSampleId :
 MW-04-12-083023

Quant Method : Z:\voasrv\HPCHEM1\MSVOA_X\Method\82X081723W.M
 Quant Title : SW846 8260

TIC Library : C:\Database\NIST20.L
 TIC Integration Parameters: LSCINT.P



Library Search Compound Report

Data Path : Z:\voasrv\HPCHEM1\MSVOA_X\Data\VX090223\
Data File : VX037480.D
Acq On : 02 Sep 2023 14:04
Operator : JC/MD
Sample : 04252-04
Misc : 5.0mL/MSVOA_X/WATER
ALS Vial : 8 Sample Multiplier: 1

Instrument :
MSVOA_X
ClientSampleId :
MW-04-12-083023

Quant Method : Z:\voasrv\HPCHEM1\MSVOA_X\Method\82X081723W.M
Quant Title : SW846 8260

TIC Library : C:\Database\NIST20.L
TIC Integration Parameters: LSCINT.P

No Library Search Compounds Detected

Data Path : Z:\voasrv\HPCHEM1\MSVOA_X\Data\VX090223\
Data File : VX037480.D
Acq On : 02 Sep 2023 14:04
Operator : JC/MD
Sample : 04252-04
Misc : 5.0mL/MSVOA_X/WATER
ALS Vial : 8 Sample Multiplier: 1

Instrument :
MSVOA_X
ClientSampleId :
MW-04-12-083023

Quant Method : Z:\voasrv\HPCHEM1\MSVOA_X\Method\82X081723W.M
Quant Title : SW846 8260

TIC Library : C:\Database\NIST20.L
TIC Integration Parameters: LSCINT.P

TIC Top Hit name	RT	EstConc	Units	Response	--Internal Standard--		
					#	RT	Resp Conc
