

Data Path : Z:\VOASRV\HPCHEM1\MSVOA X\DATA\VX090320\
 Data File : VX018235.D
 Acq On : 03 Sep 2020 15:21
 Operator : JC/SP
 Sample : L3903-05
 Misc : 5.0mL/MSVOA X/WATER
 ALS Vial : 15 Sample Multiplier: 1

Instrument :
 MSVOA_X
 ClientSampleId :

Quant Time: Sep 04 01:21:16 2020
 Quant Method : Z:\VOASRV\HPCHEM1\MSVOA_X\METHOD\82X082120W.M
 Quant Title : SW846 8260
 QLast Update : Fri Aug 21 03:03:56 2020
 Response via : Initial Calibration

Internal Standards	R.T.	QIon	Response	Conc	Units	Dev(Min)
1) Pentafluorobenzene	5.64	168	481768	50.00	ug/l	0.00
34) 1,4-Difluorobenzene	6.84	114	784739	50.00	ug/l	0.00
63) Chlorobenzene-d5	10.10	117	736718	50.00	ug/l	0.00
72) 1,4-Dichlorobenzene-d4	12.06	152	356308	50.00	ug/l	0.00

System Monitoring Compounds

33) 1,2-Dichloroethane-d4	6.03	65	345481	51.66	ug/l	0.00
Spiked Amount	50.000		Recovery	=	103.32%	
35) Dibromofluoromethane	5.47	113	273142	51.11	ug/l	0.00
Spiked Amount	50.000		Recovery	=	102.22%	
50) Toluene-d8	8.70	98	953582	47.90	ug/l	0.00
Spiked Amount	50.000		Recovery	=	95.80%	
62) 4-Bromofluorobenzene	11.12	95	348208	44.46	ug/l	0.00
Spiked Amount	50.000		Recovery	=	88.92%	

Target Compounds

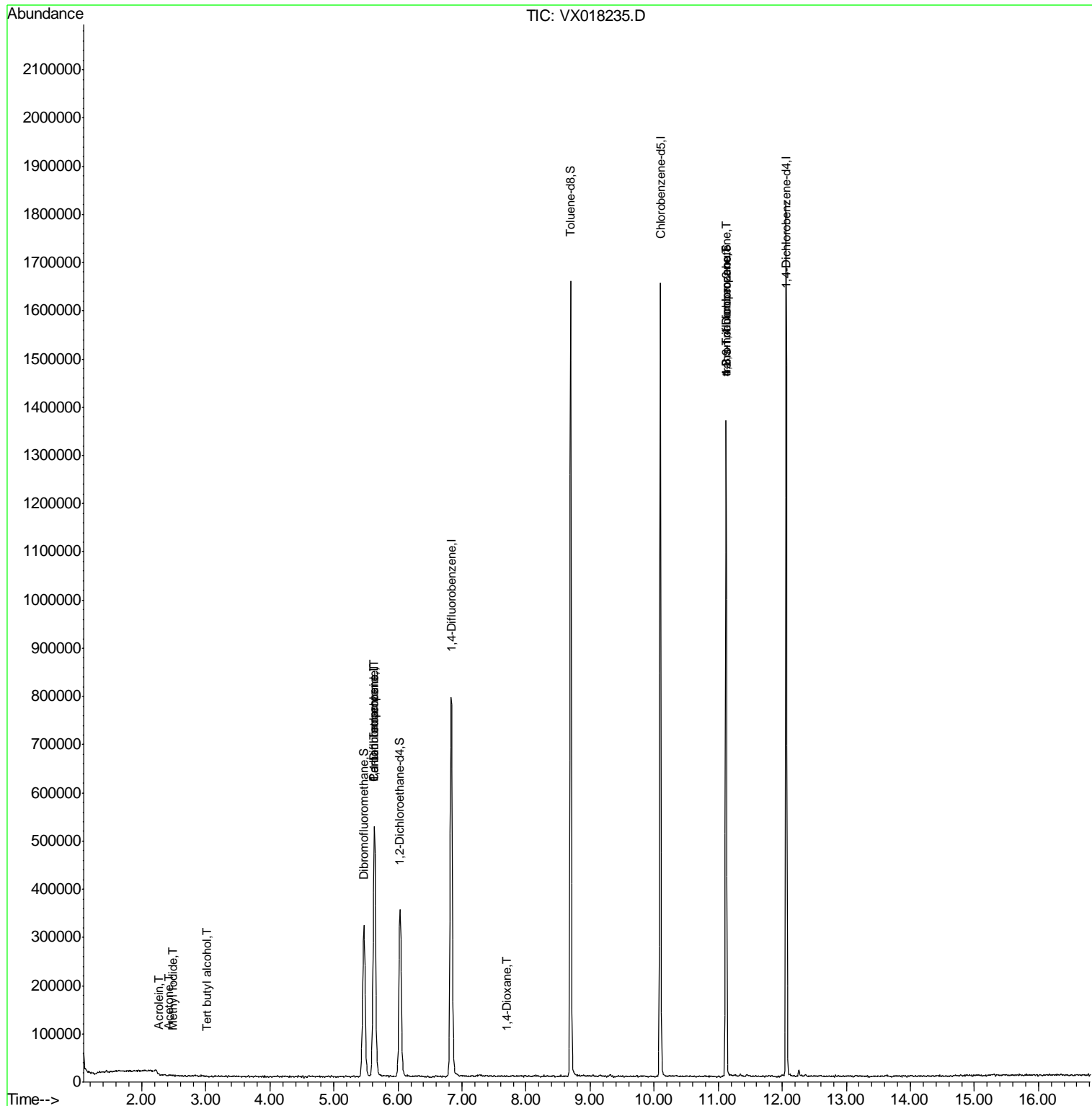
					Qvalue	
10) Methyl Iodide	2.49	142	342	5.350	ug/l #	53
11) Tert butyl alcohol	3.01	59	331	0.255	ug/l #	1
13) Acrolein	2.28	56	132	0.245	ug/l #	14
16) Acetone	2.43	43	1709	0.656	ug/l #	43
20) Methylene Chloride	2.84	84	1058	Below Cal	#	62
36) 1,1-Dichloropropene	5.63	75	37245	5.146	ug/l #	51
38) Carbon Tetrachloride	5.63	117	49422	6.059	ug/l #	18
49) 1,4-Dioxane	7.71	88	99	0.809	ug/l #	1
76) 1,2,3-Trichloropropane	11.12	75	178853	22.565	ug/l #	36
81) trans-1,4-Dichloro-2-buten	11.12	75	178853	60.944	ug/l #	12

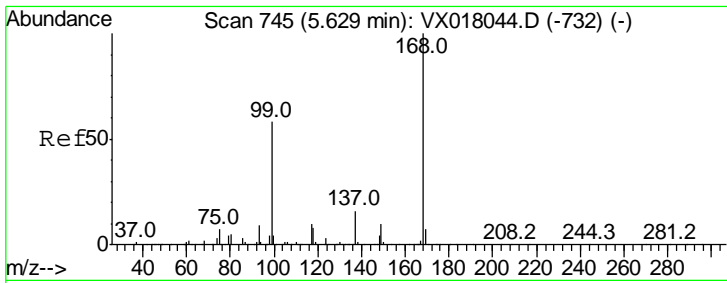
(#) = qualifier out of range (m) = manual integration (+) = signals summed

Data Path : Z:\VOASRV\HPCHEM1\MSVOA X\DATA\VX090320\
 Data File : VX018235.D
 Acq On : 03 Sep 2020 15:21
 Operator : JC/SP
 Sample : L3903-05
 Misc : 5.0mL/MSVOA X/WATER
 ALS Vial : 15 Sample Multiplier: 1

Instrument :
 MSVOA_X
 ClientSampled :

Quant Time: Sep 04 01:21:16 2020
 Quant Method : Z:\VOASRV\HPCHEM1\MSVOA_X\METHOD\82X082120W.M
 Quant Title : SW846 8260
 QLast Update : Fri Aug 21 03:03:56 2020
 Response via : Initial Calibration

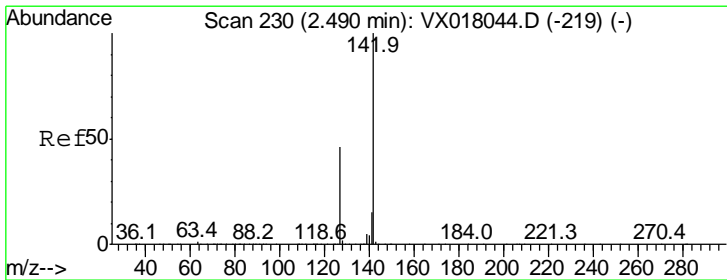
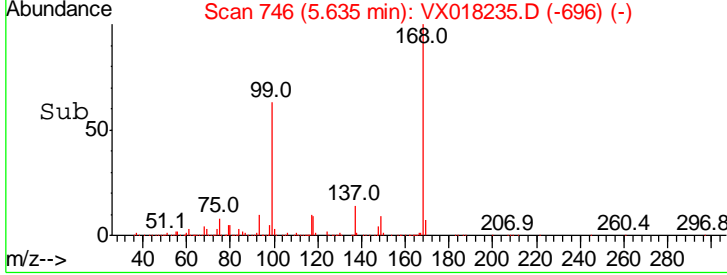
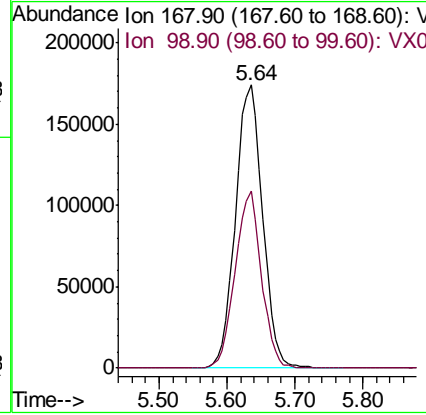
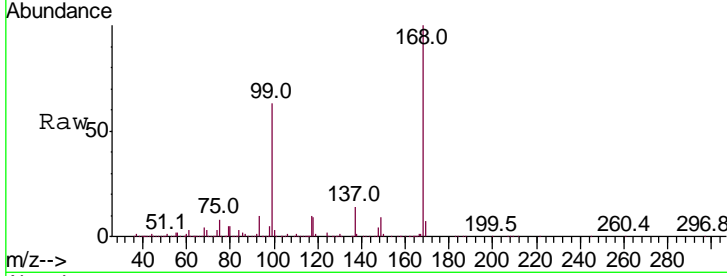




#1
 Pentafluorobenzene
 Concen: 50.000 ug/l
 RT: 5.64 min Scan# 746
 Delta R.T. 0.01 min
 Lab File: VX018235.D
 Acq: 03 Sep 2020 15:21

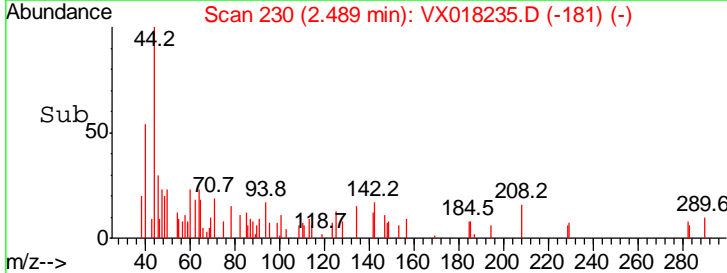
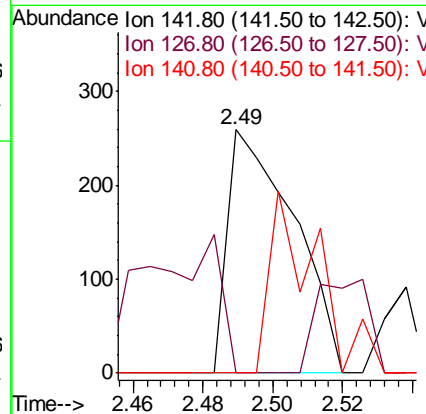
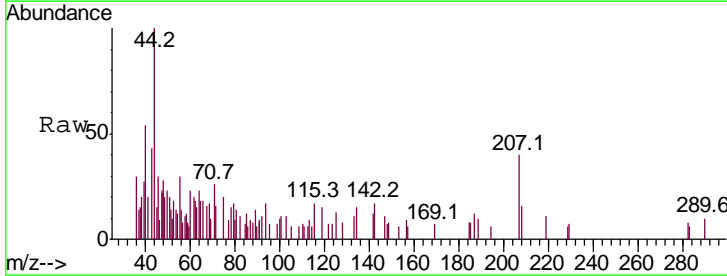
Instrument :
 MSVOA_X
 ClientSampled :

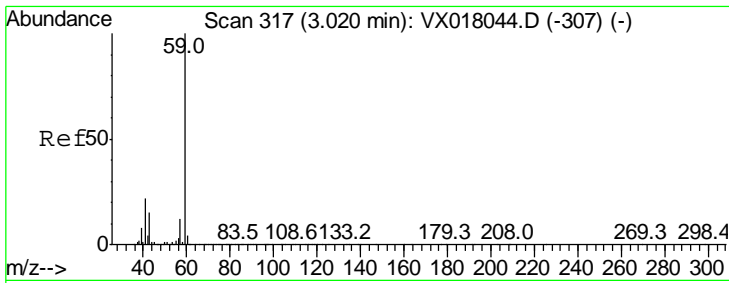
Tgt Ion	Resp	Lower	Upper
168	100		
99	62.7	46.3	69.5



#10
 Methyl Iodide
 Concen: 5.350 ug/l
 RT: 2.49 min Scan# 230
 Delta R.T. 0.00 min
 Lab File: VX018235.D
 Acq: 03 Sep 2020 15:21

Tgt Ion	Resp	Lower	Upper
142	100		
127	67.5	37.0	55.6#
141	52.6	11.5	17.3#

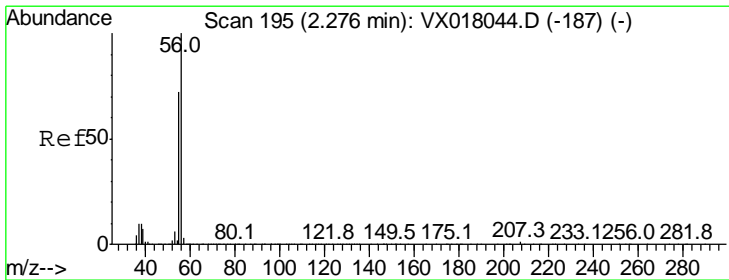
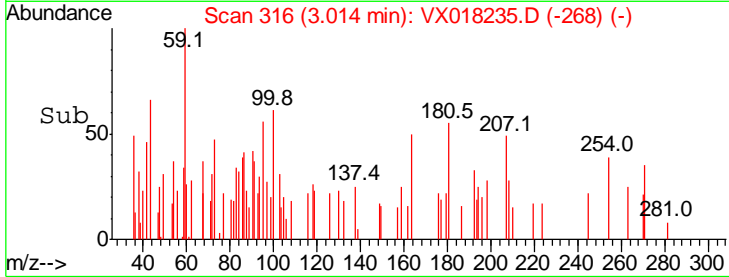
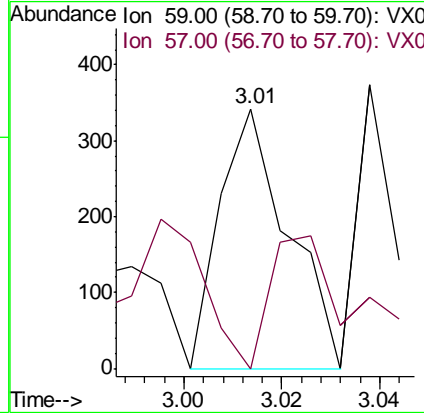
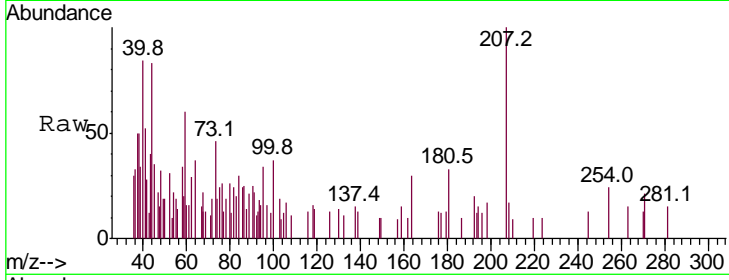




#11
 Tert butyl alcohol
 Concen: 0.255 ug/l
 RT: 3.01 min Scan# 316
 Delta R.T. -0.01 min
 Lab File: VX018235.D
 Acq: 03 Sep 2020 15:21

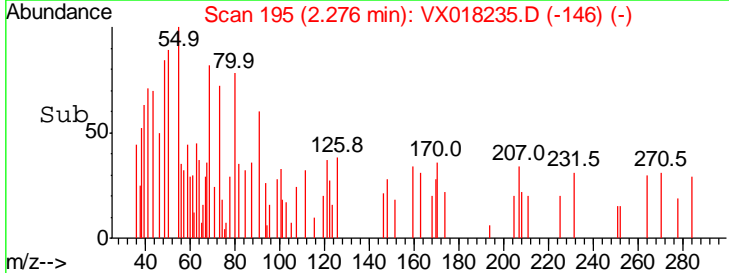
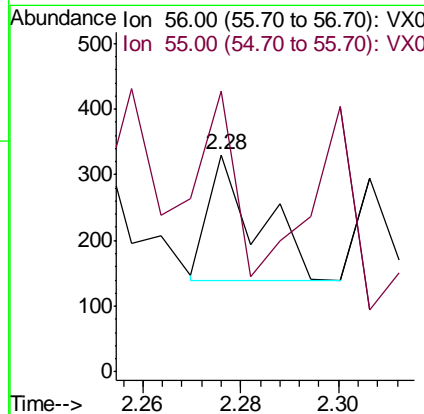
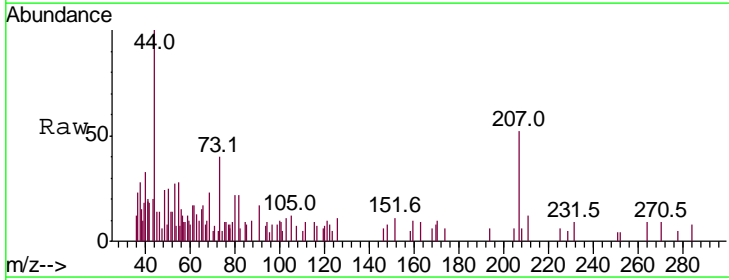
Instrument :
 MSVOA_X
 ClientSampled :

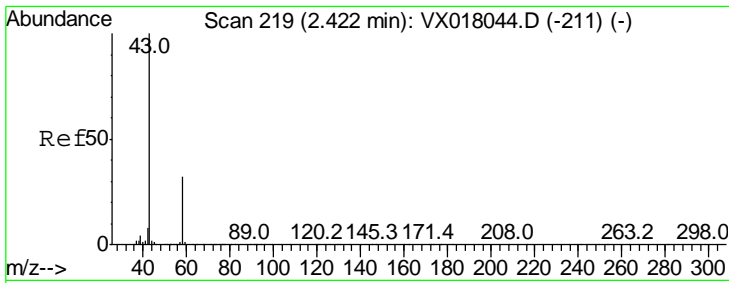
Tgt Ion: 59 Resp: 331
 Ion Ratio Lower Upper
 59 100
 57 61.3 8.9 13.3#



#13
 Acrolein
 Concen: 0.245 ug/l
 RT: 2.28 min Scan# 195
 Delta R.T. -0.00 min
 Lab File: VX018235.D
 Acq: 03 Sep 2020 15:21

Tgt Ion: 56 Resp: 132
 Ion Ratio Lower Upper
 56 100
 55 0.0 57.0 85.6#

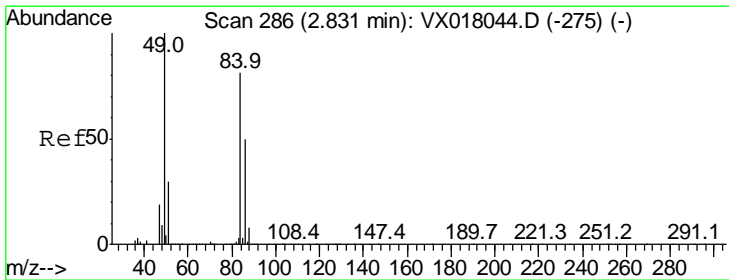
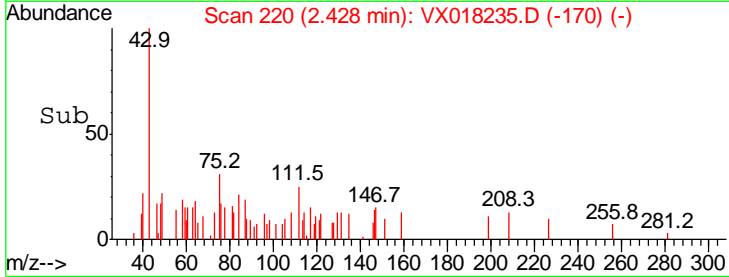
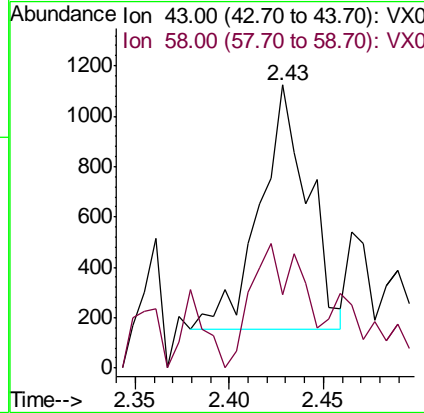
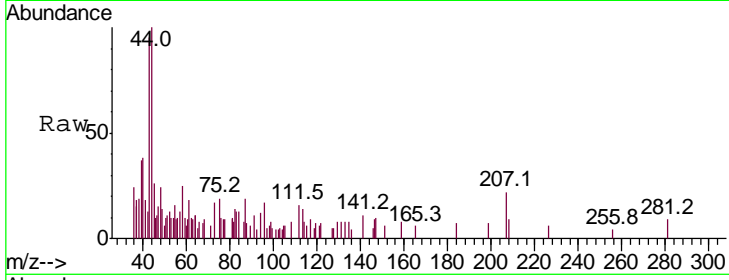




#16
 Acetone
 Concen: 0.656 ug/l
 RT: 2.43 min Scan# 220
 Delta R.T. 0.01 min
 Lab File: VX018235.D
 Acq: 03 Sep 2020 15:21

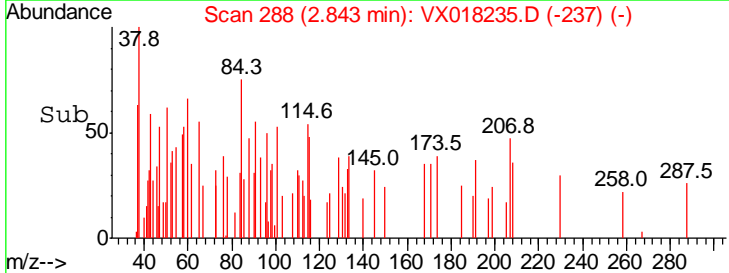
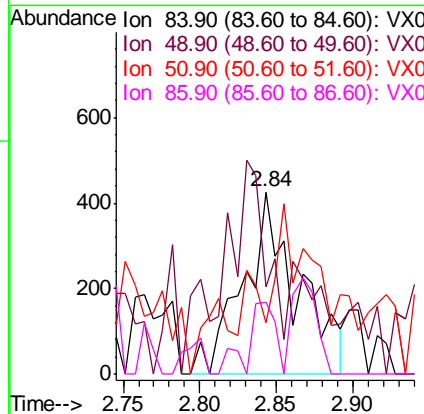
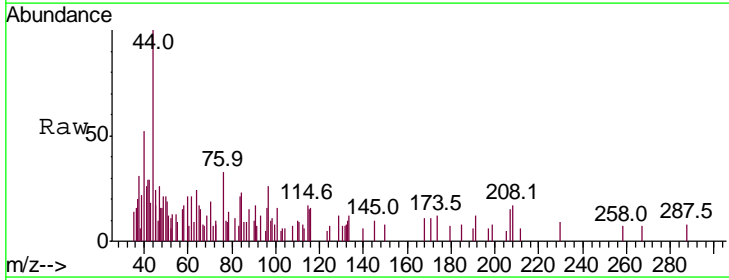
Instrument :
 MSVOA_X
 ClientSampled :

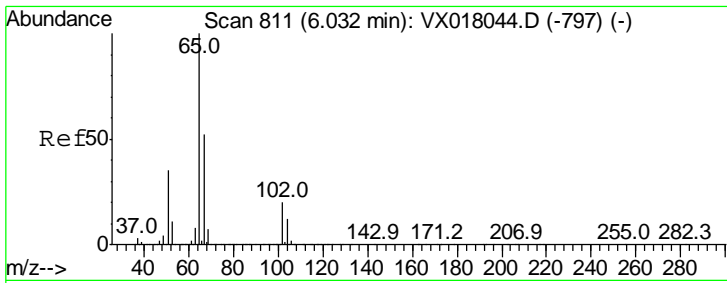
Tgt Ion: 43 Resp: 1709
 Ion Ratio Lower Upper
 43 100
 58 0.0 25.5 38.3#



#20
 Methylene Chloride
 Concen: Below Cal
 RT: 2.84 min Scan# 288
 Delta R.T. 0.01 min
 Lab File: VX018235.D
 Acq: 03 Sep 2020 15:21

Tgt Ion: 84 Resp: 1058
 Ion Ratio Lower Upper
 84 100
 49 68.5 98.6 148.0#
 51 28.2 29.6 44.4#
 86 39.7 49.8 74.6#

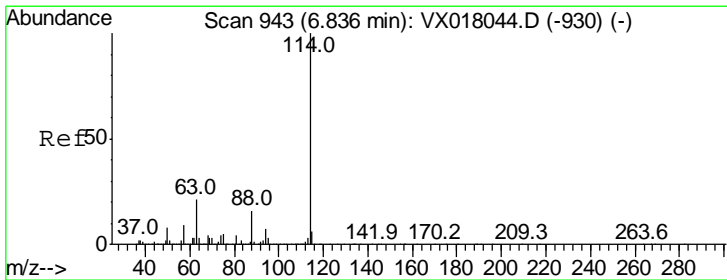
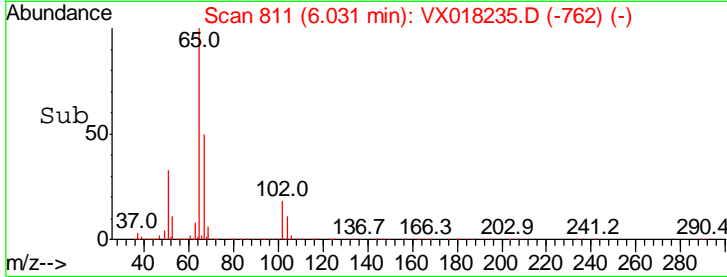
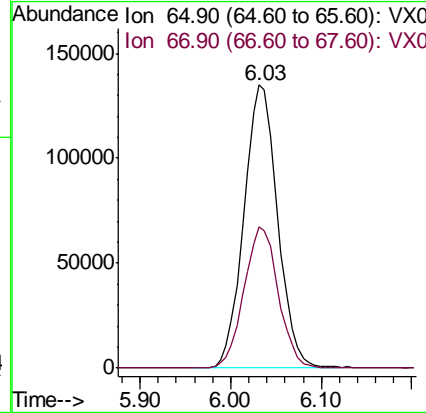
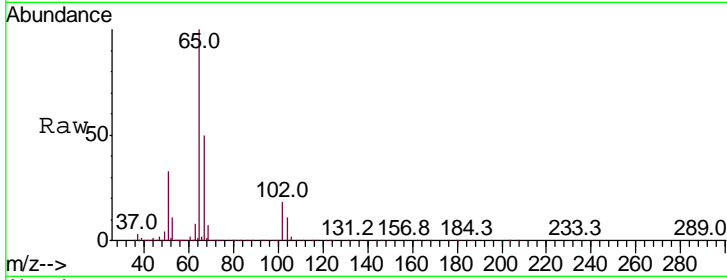




#33
 1,2-Dichloroethane-d4
 Concen: 51.656 ug/l
 RT: 6.03 min Scan# 811
 Delta R.T. -0.00 min
 Lab File: VX018235.D
 Acq: 03 Sep 2020 15:21

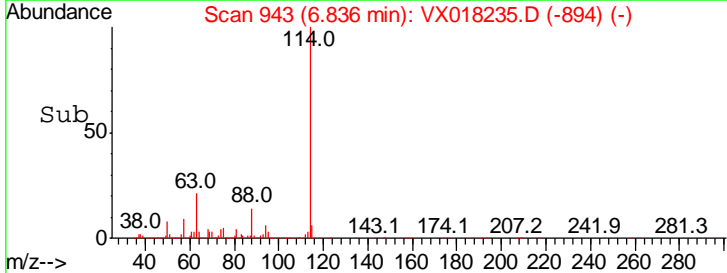
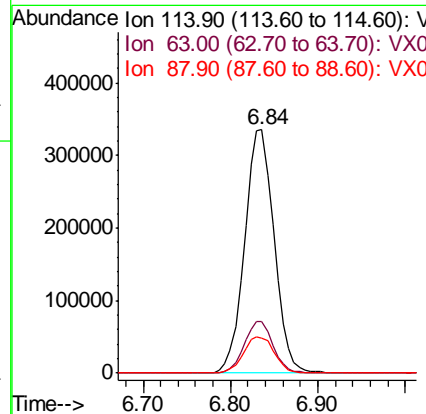
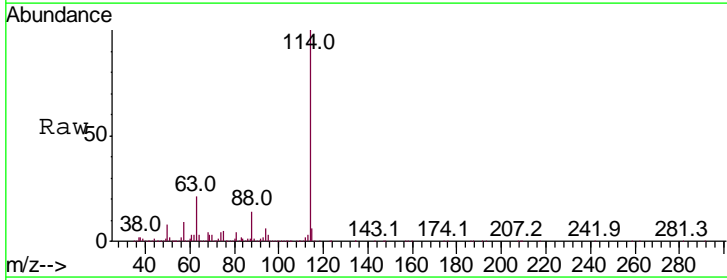
Instrument :
 MSVOA_X
 ClientSampled :

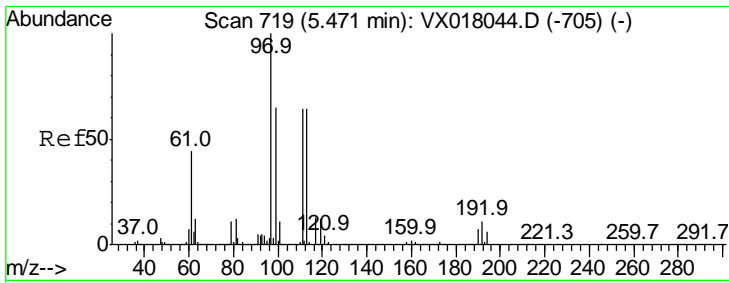
Tgt Ion	Resp	Lower	Upper
65	100		
67	51.2	0.0	105.8



#34
 1,4-Difluorobenzene
 Concen: 50.000 ug/l
 RT: 6.84 min Scan# 943
 Delta R.T. -0.00 min
 Lab File: VX018235.D
 Acq: 03 Sep 2020 15:21

Tgt Ion	Resp	Lower	Upper
114	100		
63	20.9	0.0	42.6
88	14.5	0.0	31.8

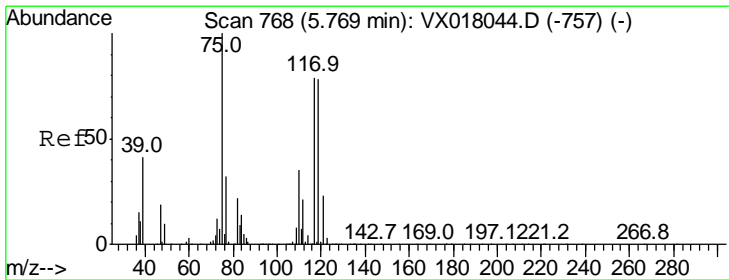
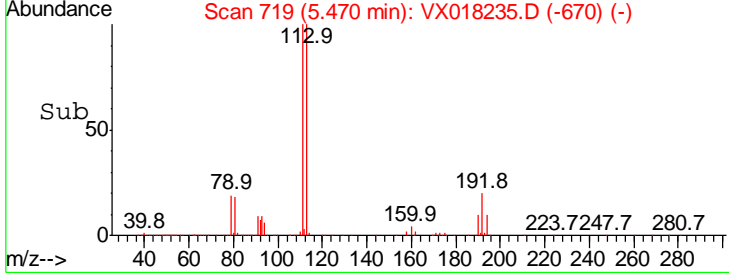
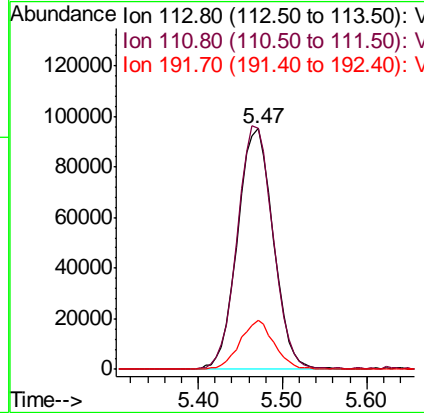
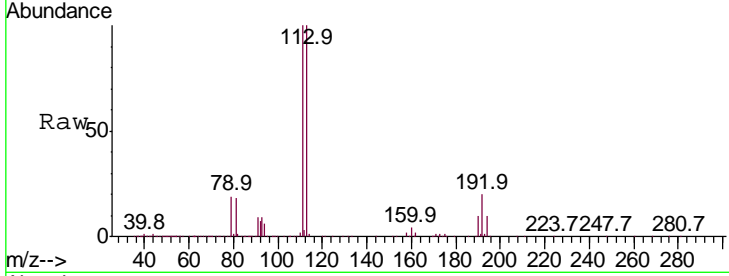




#35
 Dibromofluoromethane
 Concen: 51.108 ug/l
 RT: 5.47 min Scan# 719
 Delta R.T. -0.00 min
 Lab File: VX018235.D
 Acq: 03 Sep 2020 15:21

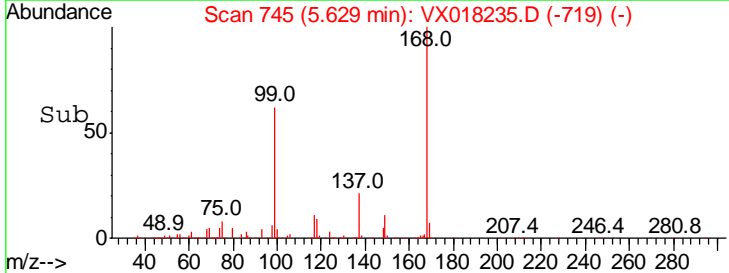
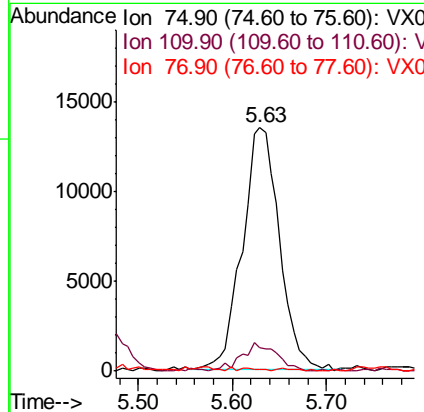
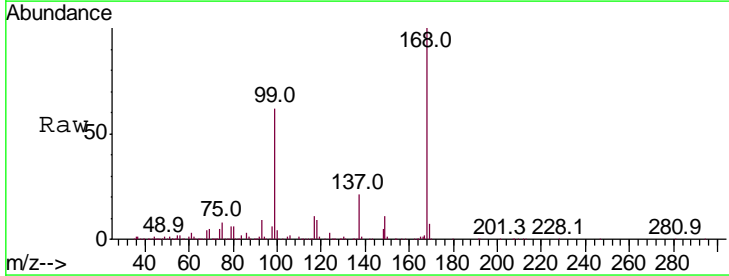
Instrument :
 MSVOA_X
 ClientSampled :

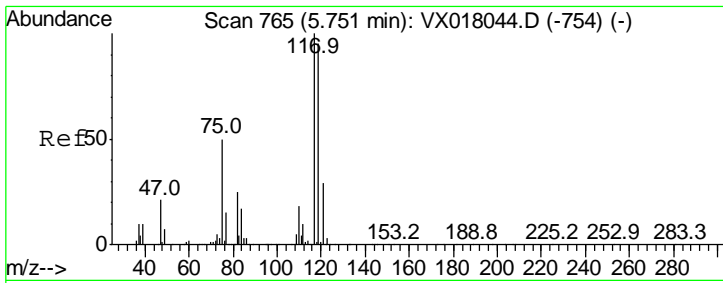
Tgt Ion	Resp	Lower	Upper
113	100		
111	101.0	81.6	122.4
192	19.6	15.8	23.8



#36
 1,1-Dichloropropene
 Concen: 5.146 ug/l
 RT: 5.63 min Scan# 745
 Delta R.T. -0.14 min
 Lab File: VX018235.D
 Acq: 03 Sep 2020 15:21

Tgt Ion	Resp	Lower	Upper
75	100		
110	11.2	18.0	54.0#
77	0.0	24.4	36.6#

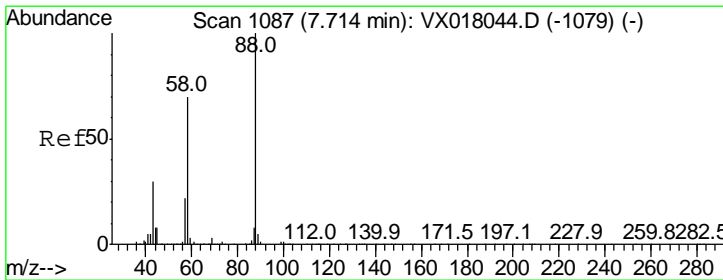
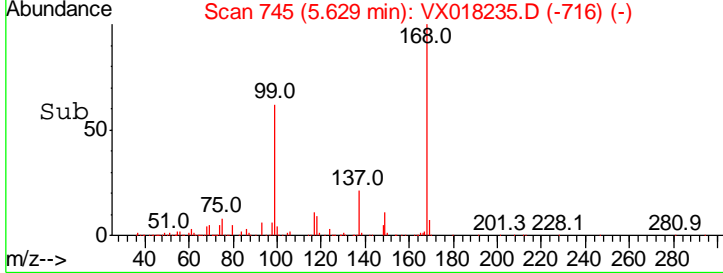
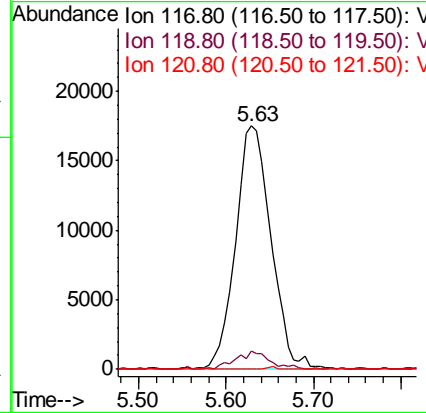
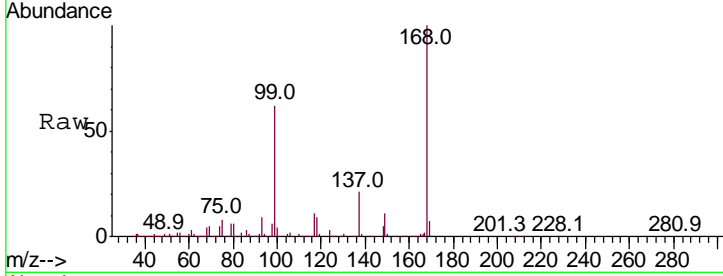




#38
 Carbon Tetrachloride
 Concen: 6.059 ug/l
 RT: 5.63 min Scan# 745
 Delta R.T. -0.12 min
 Lab File: VX018235.D
 Acq: 03 Sep 2020 15:21

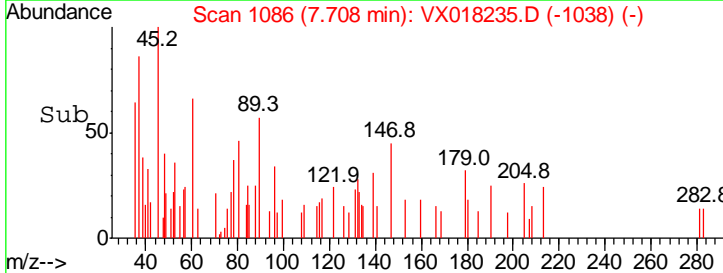
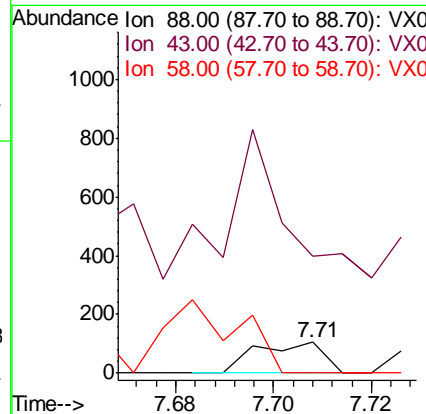
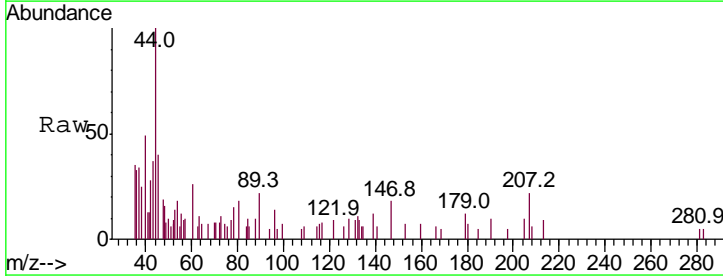
Instrument :
 MSVOA_X
 ClientSampled :

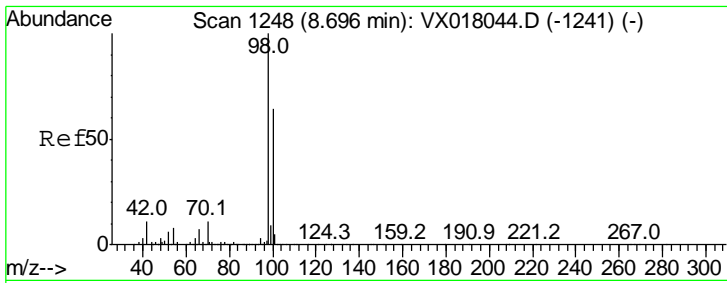
Tgt Ion	Ratio	Lower	Upper
117	100		
119	7.0	75.8	113.6#
121	0.5	23.4	35.0#



#49
 1,4-Dioxane
 Concen: 0.809 ug/l
 RT: 7.71 min Scan# 1086
 Delta R.T. -0.01 min
 Lab File: VX018235.D
 Acq: 03 Sep 2020 15:21

Tgt Ion	Ratio	Lower	Upper
88	100		
43	420.2	27.4	41.0#
58	0.0	56.4	84.6#

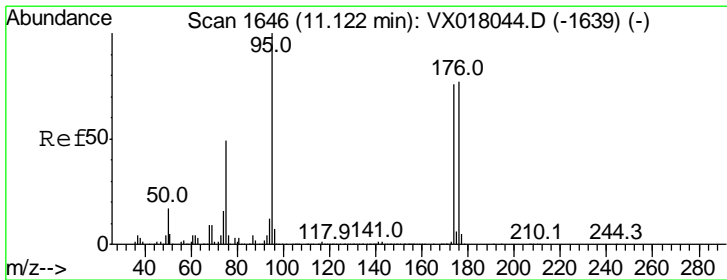
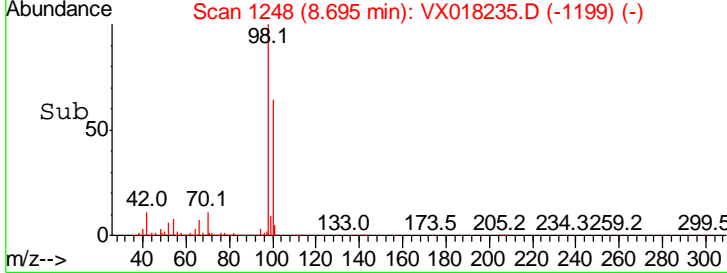
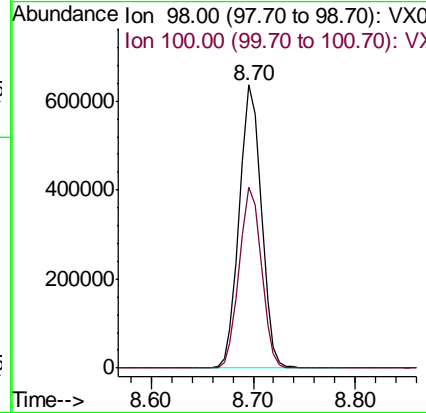
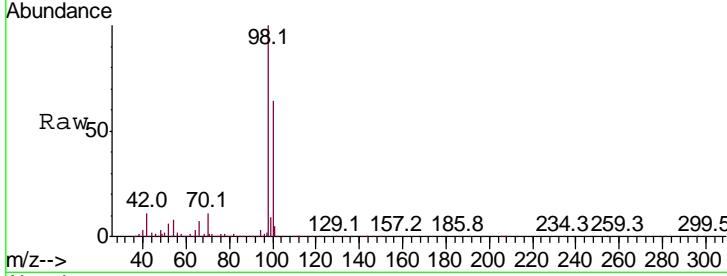




#50
 Toluene-d8
 Concen: 47.905 ug/l
 RT: 8.70 min Scan# 1248
 Delta R.T. -0.00 min
 Lab File: VX018235.D
 Acq: 03 Sep 2020 15:21

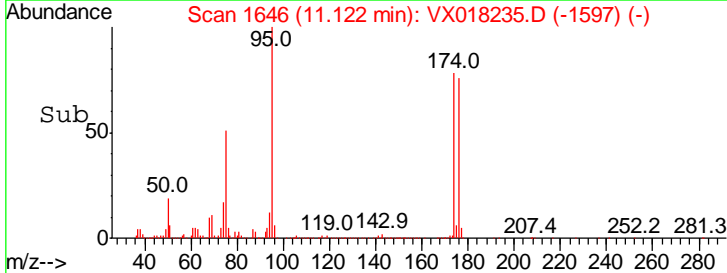
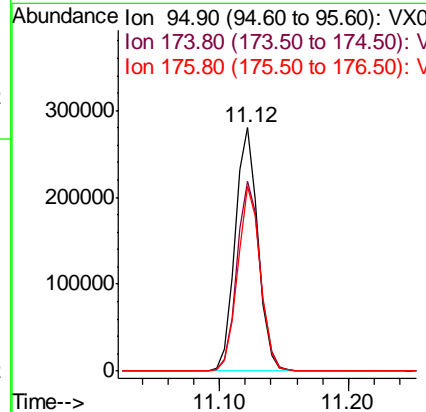
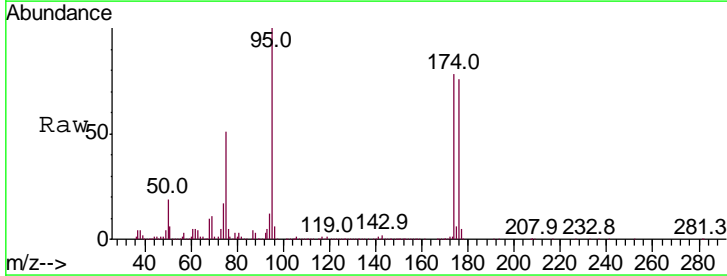
Instrument : MSVOA_X
 ClientSampled :

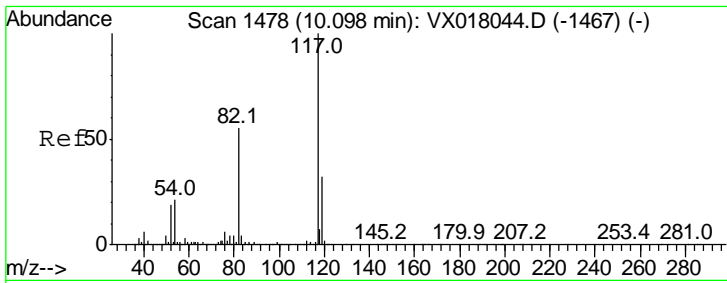
Tgt Ion	Resp	Lower	Upper
98	100		
100	64.4	52.2	78.4



#62
 4-Bromofluorobenzene
 Concen: 44.461 ug/l
 RT: 11.12 min Scan# 1646
 Delta R.T. -0.00 min
 Lab File: VX018235.D
 Acq: 03 Sep 2020 15:21

Tgt Ion	Resp	Lower	Upper
95	100		
174	79.6	0.0	160.2
176	75.4	0.0	155.8

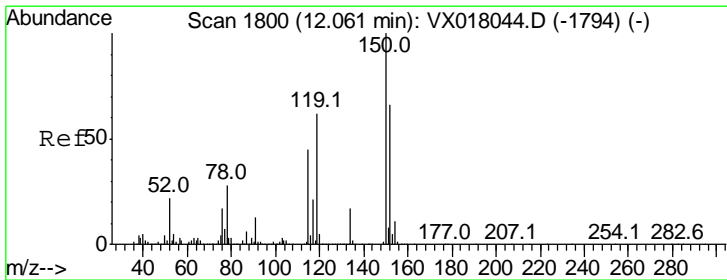
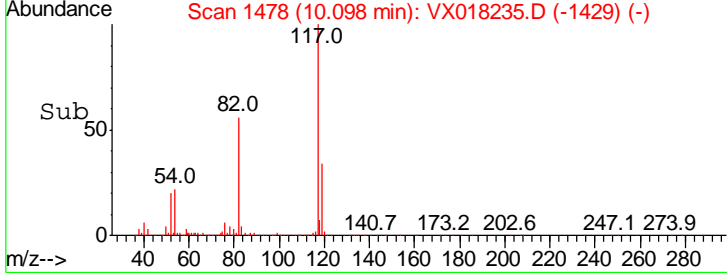
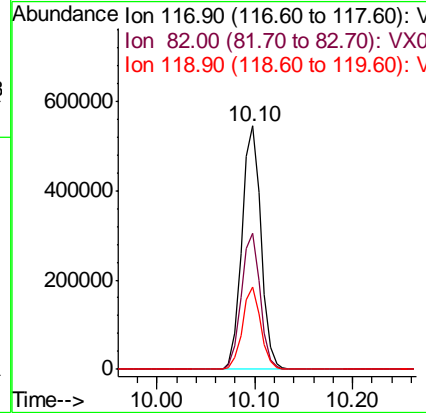
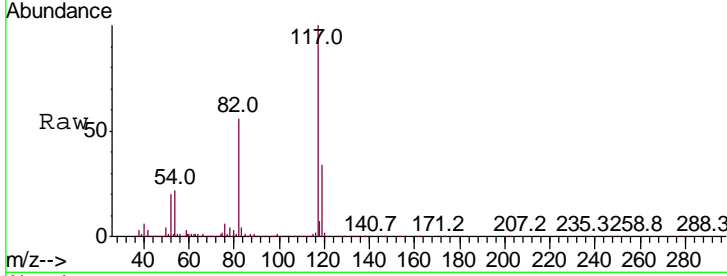




#63
 Chlorobenzene-d5
 Concen: 50.000 ug/l
 RT: 10.10 min Scan# 1478
 Delta R.T. -0.00 min
 Lab File: VX018235.D
 Acq: 03 Sep 2020 15:21

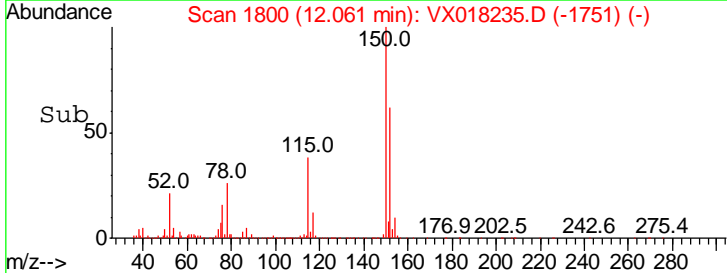
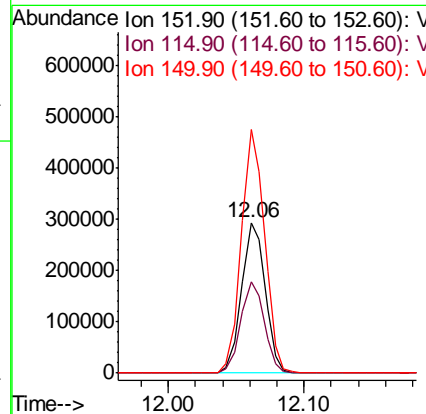
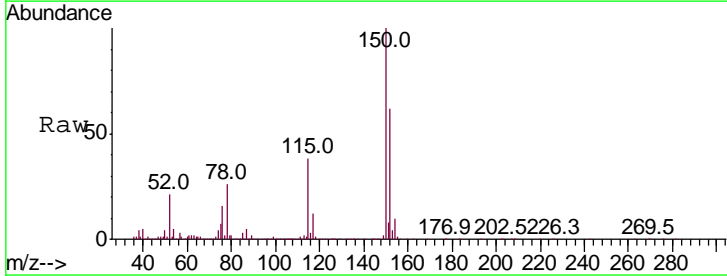
Instrument : MSVOA_X
 ClientSampled :

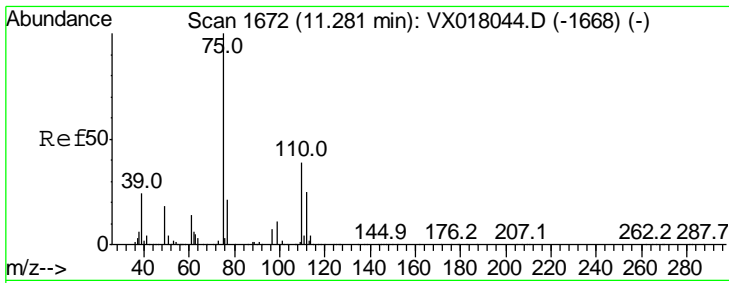
Tgt Ion	Resp	Lower	Upper
117	736718		
82	56.0	44.2	66.2
119	33.6	25.7	38.5



#72
 1,4-Dichlorobenzene-d4
 Concen: 50.000 ug/l
 RT: 12.06 min Scan# 1800
 Delta R.T. -0.00 min
 Lab File: VX018235.D
 Acq: 03 Sep 2020 15:21

Tgt Ion	Resp	Lower	Upper
152	356308		
115	60.3	41.5	124.5
150	159.1	0.0	343.8

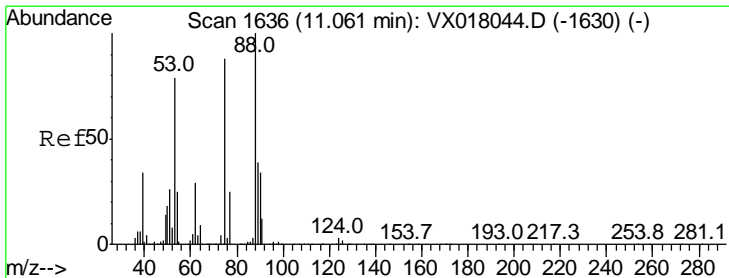
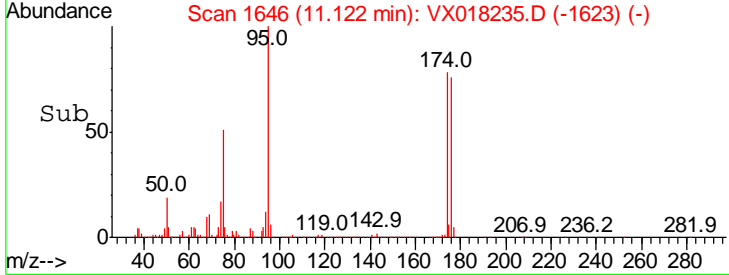
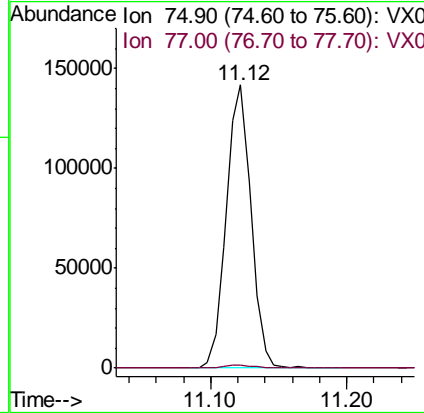
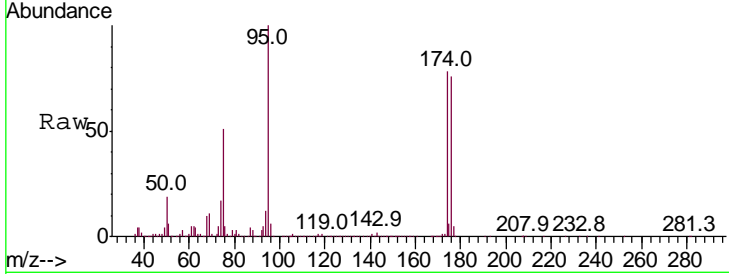




#76
 1,2,3-Trichloropropane
 Concen: 22.565 ug/l
 RT: 11.12 min Scan# 1646
 Delta R.T. -0.16 min
 Lab File: VX018235.D
 Acq: 03 Sep 2020 15:21

Instrument :
 MSVOA_X
 ClientSampled :

Tgt Ion: 75 Resp: 178853
 Ion Ratio Lower Upper
 75 100
 77 1.4 20.8 62.2#



#81
 trans-1,4-Dichloro-2-butene
 Concen: 60.944 ug/l
 RT: 11.12 min Scan# 1646
 Delta R.T. 0.06 min
 Lab File: VX018235.D
 Acq: 03 Sep 2020 15:21

Tgt Ion: 75 Resp: 178853
 Ion Ratio Lower Upper
 75 100
 53 0.4 74.7 112.1#
 89 0.2 36.6 54.8#

