

Data Path : Z:\voasrv\HPCHEM1\MSVOA_X\Data\VX090321\
 Data File : VX024096.D
 Acq On : 03 Sep 2021 12:44
 Operator : JC/MD
 Sample : M3620-08
 Misc : 5.0mL/MSVOA_X/WATER
 ALS Vial : 8 Sample Multiplier: 1

Instrument :
 MSVOA_X
 ClientSampleId :

Quant Time: Sep 03 13:46:26 2021
 Quant Method : Z:\voasrv\HPCHEM1\MSVOA_X\Method\82X081721W.M
 Quant Title : SW846 8260
 QLast Update : Tue Aug 17 11:57:51 2021
 Response via : Initial Calibration

Compound	R.T.	QIon	Response	Conc	Units	Dev(Min)

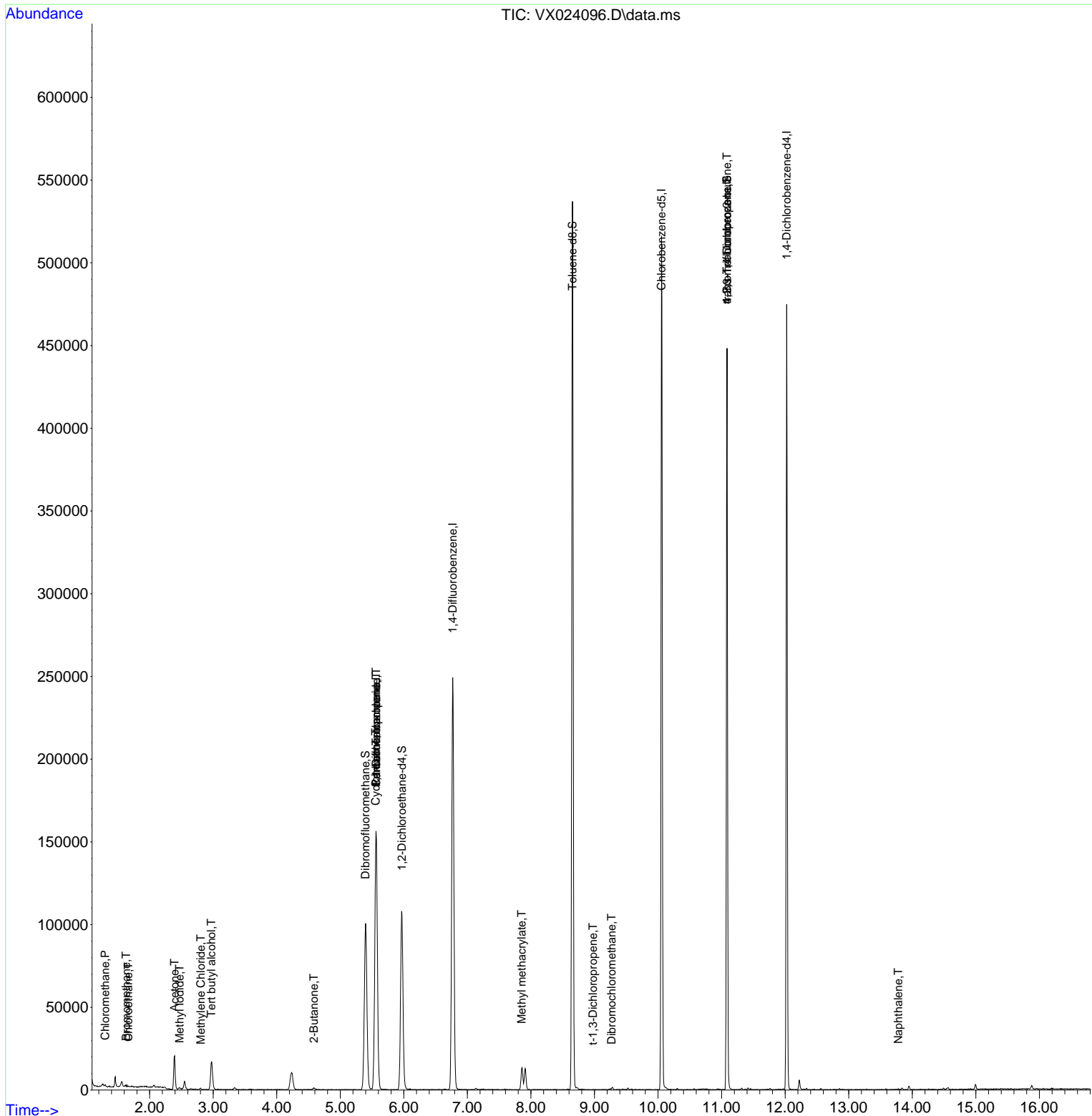
Internal Standards						
1) Pentafluorobenzene	5.562	168	147153	50.000	ug/l	0.00
34) 1,4-Difluorobenzene	6.769	114	242290	50.000	ug/l	0.00
63) Chlorobenzene-d5	10.055	117	228023	50.000	ug/l	0.00
72) 1,4-Dichlorobenzene-d4	12.024	152	93955	50.000	ug/l	0.00
System Monitoring Compounds						
33) 1,2-Dichloroethane-d4	5.970	65	110125	53.620	ug/l	0.00
Spiked Amount	50.000	Range 78 - 117	Recovery	=	107.240%	
35) Dibromofluoromethane	5.397	113	84613	52.763	ug/l	0.00
Spiked Amount	50.000	Range 75 - 124	Recovery	=	105.520%	
50) Toluene-d8	8.653	98	307887	50.443	ug/l	0.00
Spiked Amount	50.000	Range 92 - 112	Recovery	=	100.880%	
62) 4-Bromofluorobenzene	11.085	95	108649	48.355	ug/l	0.00
Spiked Amount	50.000	Range 83 - 123	Recovery	=	96.720%	
Target Compounds						
						Qvalue
3) Chloromethane	1.300	50	660	0.387	ug/l	94
5) Bromomethane	1.630	94	619	0.592	ug/l	95
6) Chloroethane	1.666	64	249	2.389	ug/l #	43
10) Methyl Iodide	2.471	142	1218	0.592	ug/l #	86
11) Tert butyl alcohol	2.971	59	19133	46.066	ug/l	99
16) Acetone	2.392	43	21157	23.039	ug/l	95
20) Methylene Chloride	2.806	84	376	0.214	ug/l #	58
25) 2-Butanone	4.586	43	1438	1.034	ug/l	97
31) Cyclohexane	5.556	56	3352	1.270	ug/l #	30
36) 1,1-Dichloropropene	5.562	75	11174	4.980	ug/l #	49
38) Carbon Tetrachloride	5.562	117	15680	6.702	ug/l #	15
48) Methyl methacrylate	7.854	41	5882	2.795	ug/l #	35
53) t-1,3-Dichloropropene	8.976	75	35	2.149	ug/l #	44
60) Dibromochloromethane	9.268	129	20	1.698	ug/l #	11
76) 1,2,3-Trichloropropane	11.085	75	59706	27.242	ug/l #	39
81) trans-1,4-Dichloro-2-b...	11.085	75	59706	80.132	ug/l #	12
95) Naphthalene	13.780	128	378	1.336	ug/l #	84

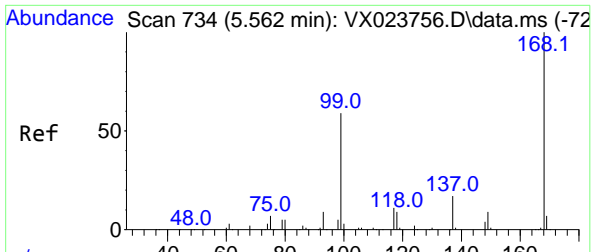
(#) = qualifier out of range (m) = manual integration (+) = signals summed

Data Path : Z:\voasrv\HPCHEM1\MSVOA_X\Data\VX090321\
 Data File : VX024096.D
 Acq On : 03 Sep 2021 12:44
 Operator : JC/MD
 Sample : M3620-08
 Misc : 5.0mL/MSVOA_X/WATER
 ALS Vial : 8 Sample Multiplier: 1

Instrument :
 MSVOA_X
 ClientSampled :

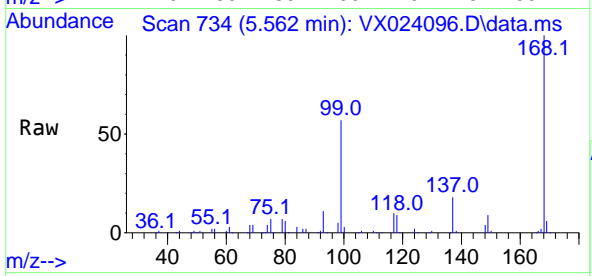
Quant Time: Sep 03 13:46:26 2021
 Quant Method : Z:\voasrv\HPCHEM1\MSVOA_X\Method\82X081721W.M
 Quant Title : SW846 8260
 QLast Update : Tue Aug 17 11:57:51 2021
 Response via : Initial Calibration



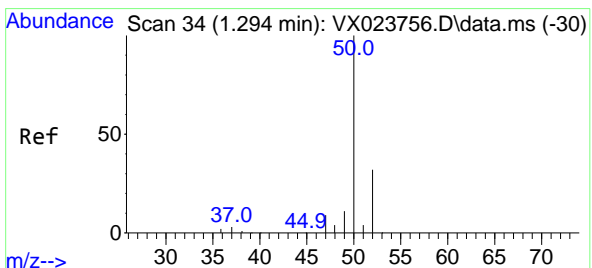
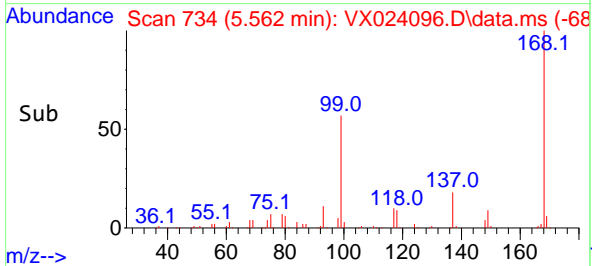
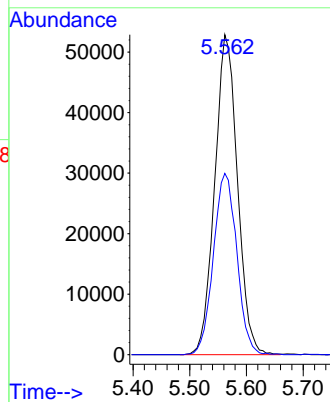


#1
 Pentafluorobenzene
 Concen: 50.000 ug/l
 RT: 5.562 min Scan# 734
 Delta R.T. -0.000 min
 Lab File: VX024096.D
 Acq: 03 Sep 2021 12:44

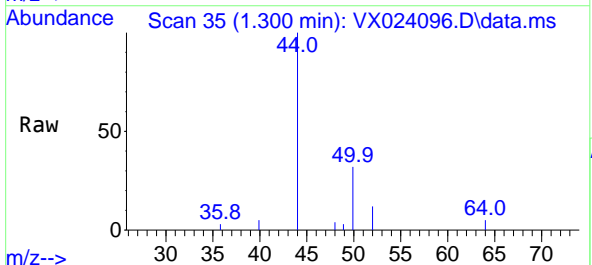
Instrument :
 MSVOA_X
 ClientSampled :



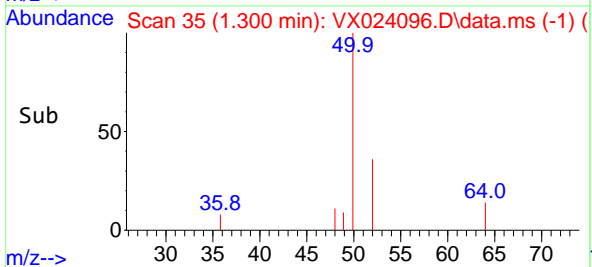
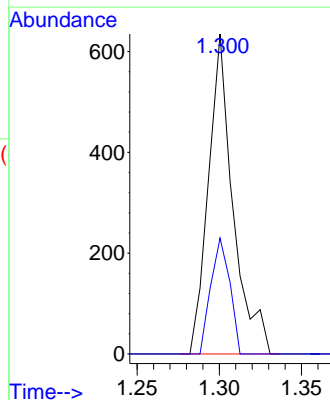
Tgt Ion:168 Resp: 147153
 Ion Ratio Lower Upper
 168 100
 99 56.7 45.8 68.6

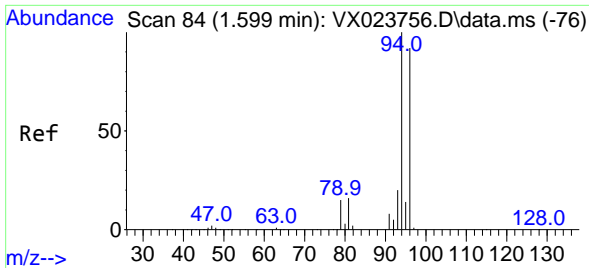


#3
 Chloromethane
 Concen: 0.387 ug/l
 RT: 1.300 min Scan# 35
 Delta R.T. 0.006 min
 Lab File: VX024096.D
 Acq: 03 Sep 2021 12:44



Tgt Ion: 50 Resp: 660
 Ion Ratio Lower Upper
 50 100
 52 36.2 26.4 39.6

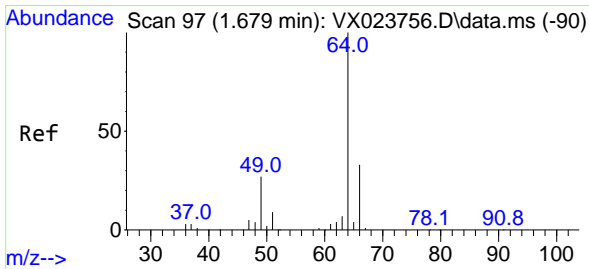
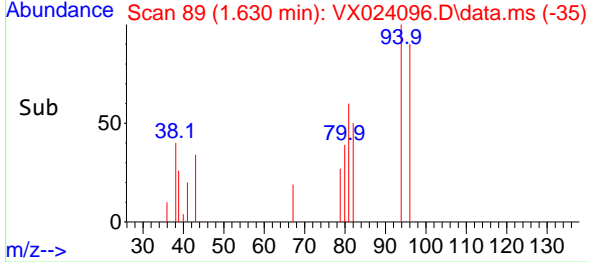
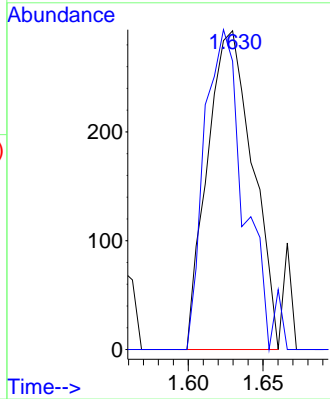
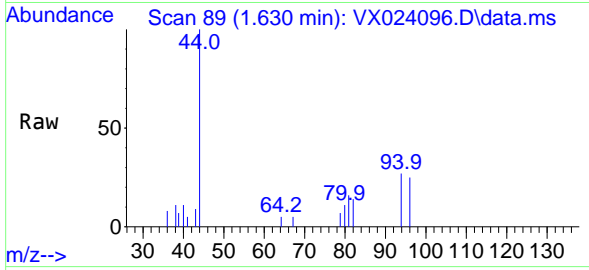




#5
 Bromomethane
 Concen: 0.592 ug/l
 RT: 1.630 min Scan# 89
 Delta R.T. 0.031 min
 Lab File: VX024096.D
 Acq: 03 Sep 2021 12:44

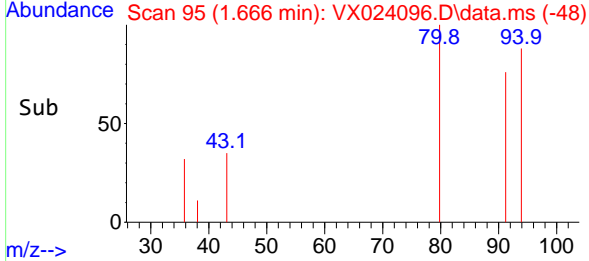
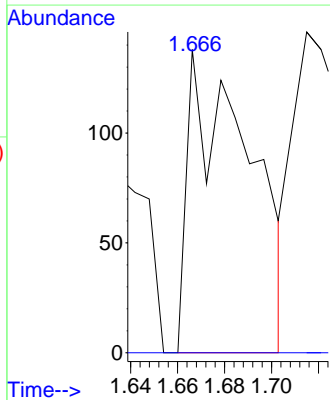
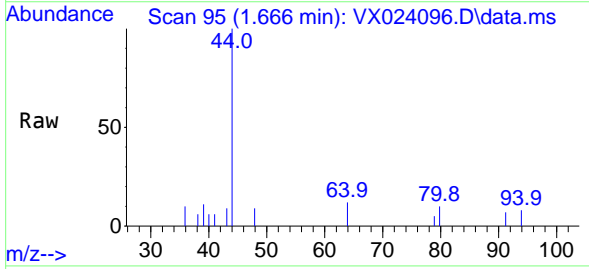
Instrument :
 MSVOA_X
 ClientSampled :

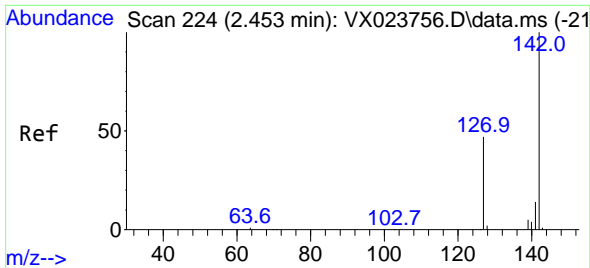
Tgt Ion: 94 Resp: 619
 Ion Ratio Lower Upper
 94 100
 96 90.4 76.4 114.6



#6
 Chloroethane
 Concen: 2.389 ug/l
 RT: 1.666 min Scan# 95
 Delta R.T. -0.013 min
 Lab File: VX024096.D
 Acq: 03 Sep 2021 12:44

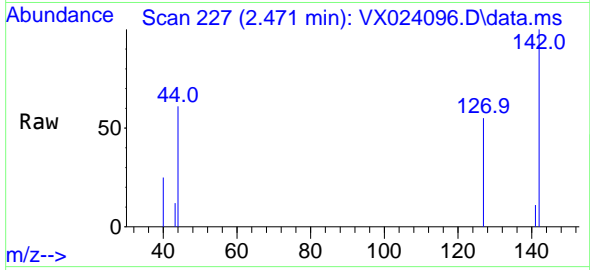
Tgt Ion: 64 Resp: 249
 Ion Ratio Lower Upper
 64 100
 66 0.0 25.4 38.0#



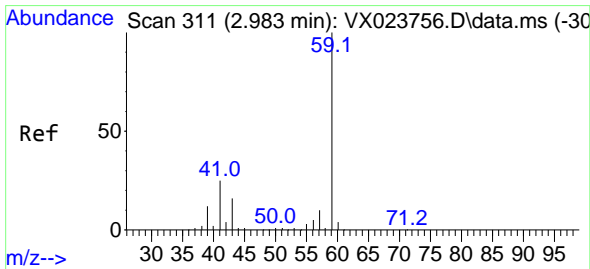
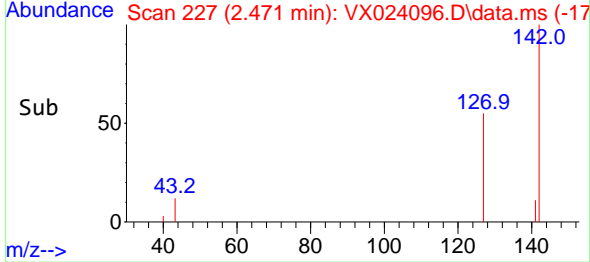
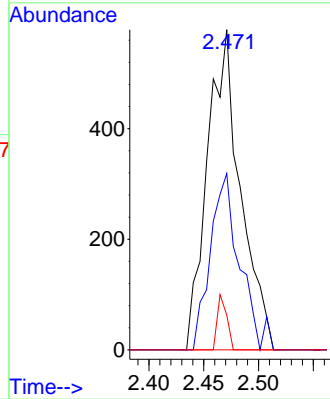


#10
Methyl Iodide
Concen: 0.592 ug/l
RT: 2.471 min Scan# 227
Delta R.T. 0.018 min
Lab File: VX024096.D
Acq: 03 Sep 2021 12:44

Instrument :
MSVOA_X
ClientSampled :

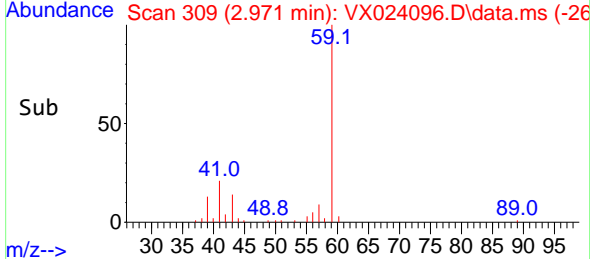
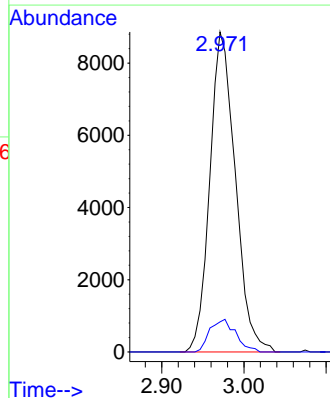
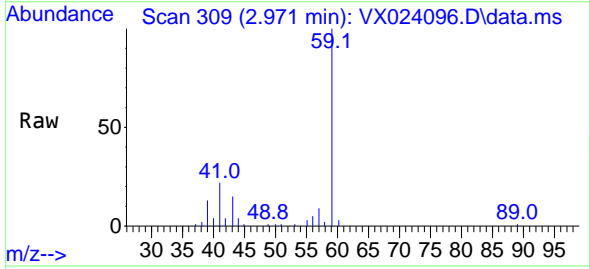


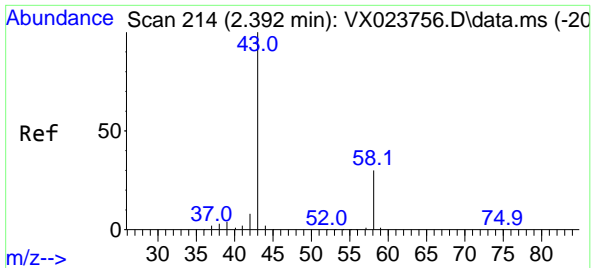
Tgt Ion:142 Resp: 1218
Ion Ratio Lower Upper
142 100
127 48.7 33.3 49.9
141 4.9 11.4 17.0#



#11
Tert butyl alcohol
Concen: 46.066 ug/l
RT: 2.971 min Scan# 309
Delta R.T. -0.012 min
Lab File: VX024096.D
Acq: 03 Sep 2021 12:44

Tgt Ion: 59 Resp: 19133
Ion Ratio Lower Upper
59 100
57 10.3 7.8 11.8



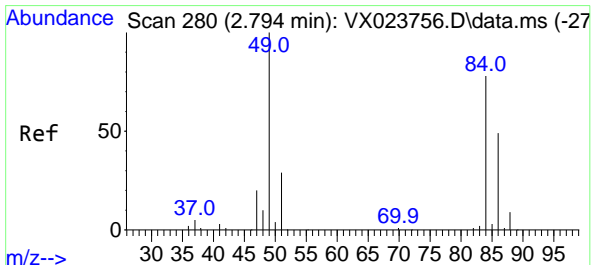
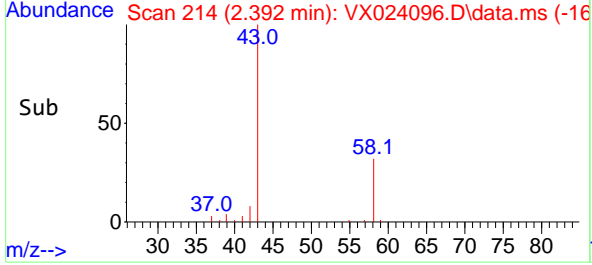
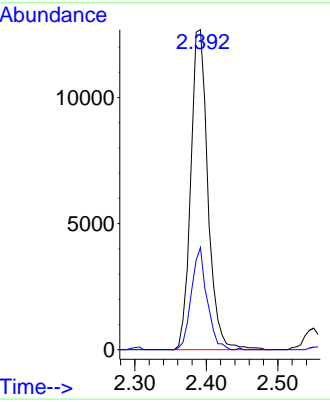
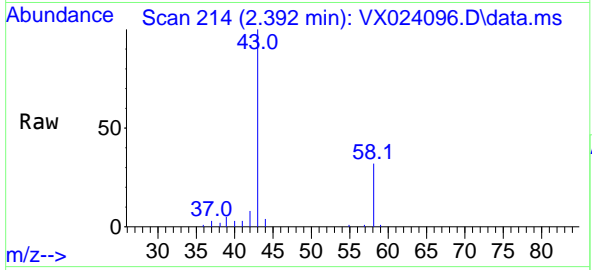


#16
 Acetone
 Concen: 23.039 ug/l
 RT: 2.392 min Scan# 214
 Delta R.T. -0.000 min
 Lab File: VX024096.D
 Acq: 03 Sep 2021 12:44

Instrument :
 MSVOA_X
 ClientSampled :

Tgt Ion: 43 Resp: 21157

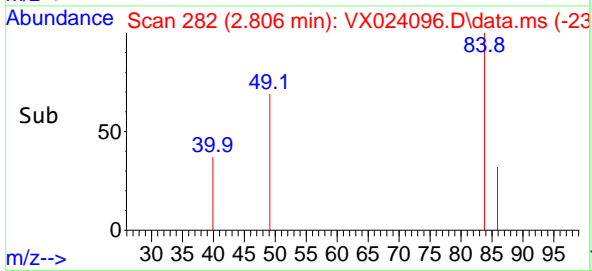
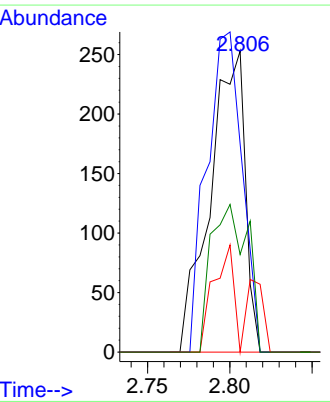
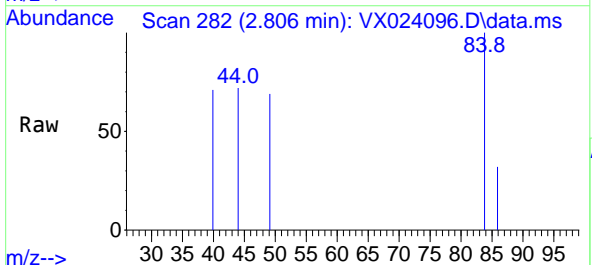
Ion	Ratio	Lower	Upper
43	100		
58	32.0	27.8	41.8

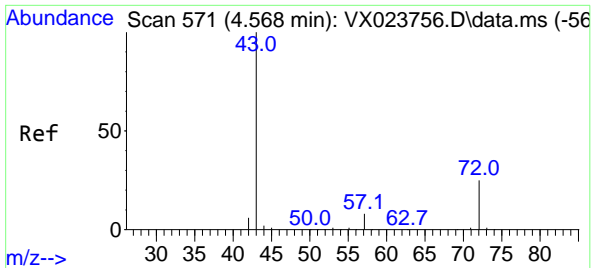


#20
 Methylene Chloride
 Concen: 0.214 ug/l
 RT: 2.806 min Scan# 282
 Delta R.T. 0.012 min
 Lab File: VX024096.D
 Acq: 03 Sep 2021 12:44

Tgt Ion: 84 Resp: 376

Ion	Ratio	Lower	Upper
84	100		
49	69.2	88.6	132.8#
51	0.0	27.0	40.6#
86	32.4	50.3	75.5#

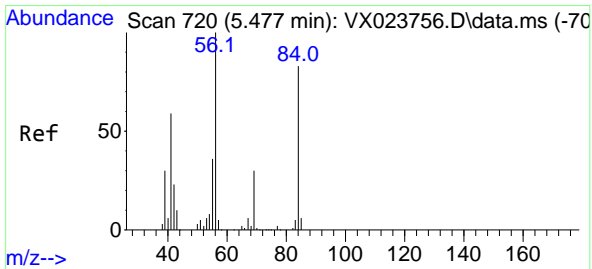
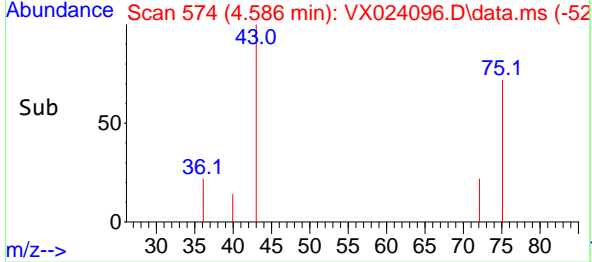
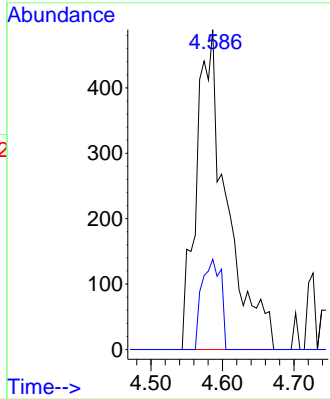
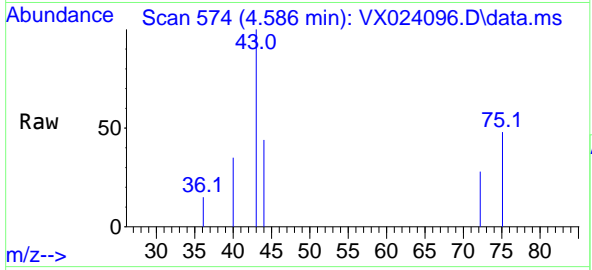




#25
 2-Butanone
 Concen: 1.034 ug/l
 RT: 4.586 min Scan# 574
 Delta R.T. 0.018 min
 Lab File: VX024096.D
 Acq: 03 Sep 2021 12:44

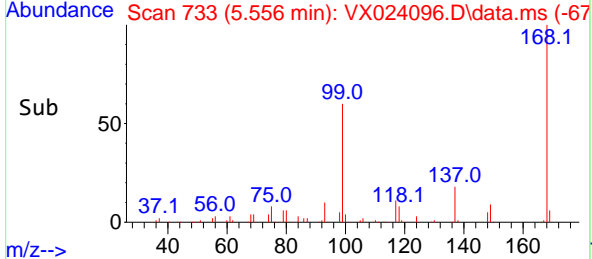
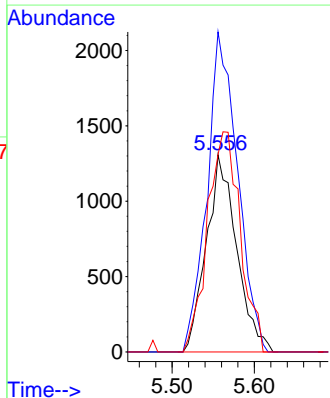
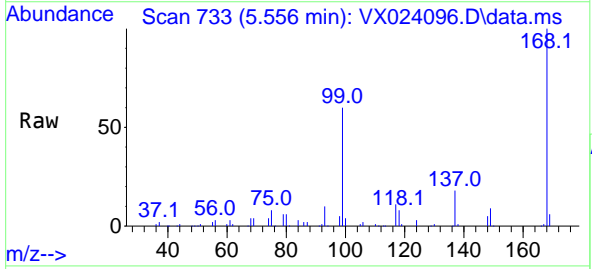
Instrument :
 MSVOA_X
 ClientSampled :

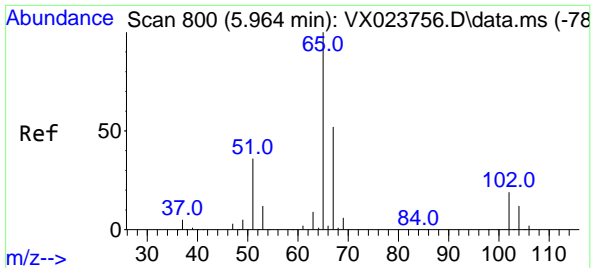
Tgt Ion: 43 Resp: 1438
 Ion Ratio Lower Upper
 43 100
 72 28.2 23.7 35.5



#31
 Cyclohexane
 Concen: 1.270 ug/l
 RT: 5.556 min Scan# 733
 Delta R.T. 0.079 min
 Lab File: VX024096.D
 Acq: 03 Sep 2021 12:44

Tgt Ion: 56 Resp: 3352
 Ion Ratio Lower Upper
 56 100
 69 162.3 25.3 37.9#
 84 100.2 71.4 107.0

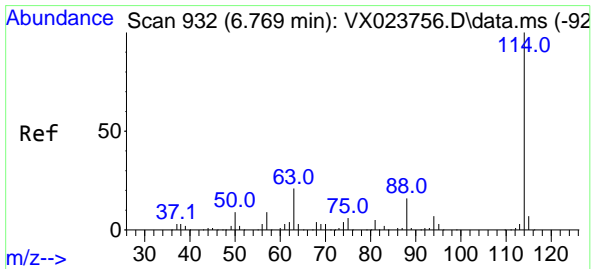
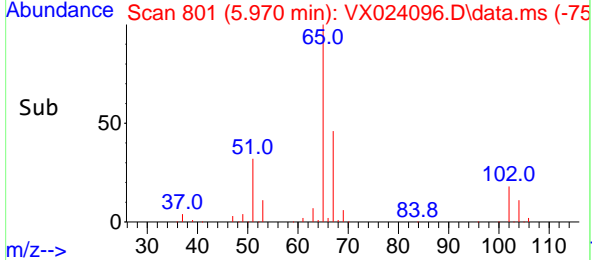
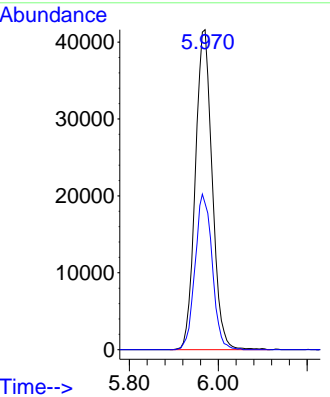
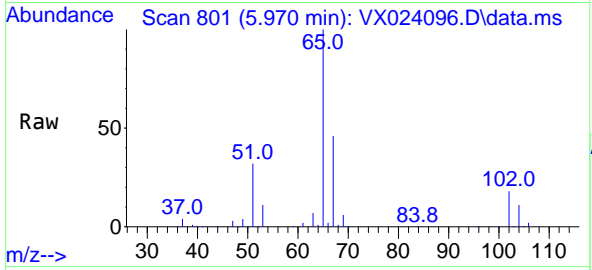




#33
 1,2-Dichloroethane-d4
 Concen: 53.620 ug/l
 RT: 5.970 min Scan# 801
 Delta R.T. 0.006 min
 Lab File: VX024096.D
 Acq: 03 Sep 2021 12:44

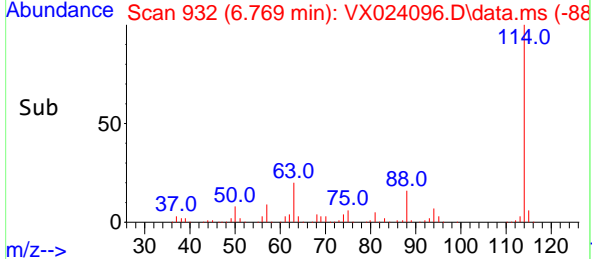
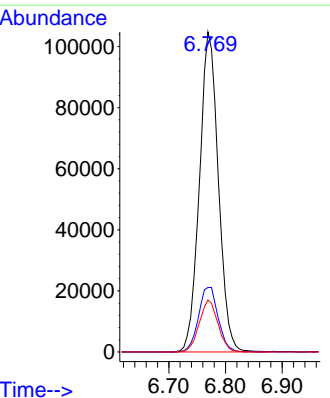
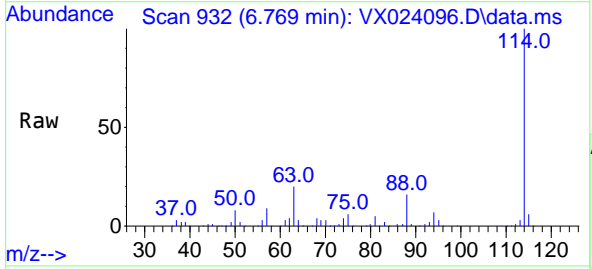
Instrument :
 MSVOA_X
 ClientSampled :

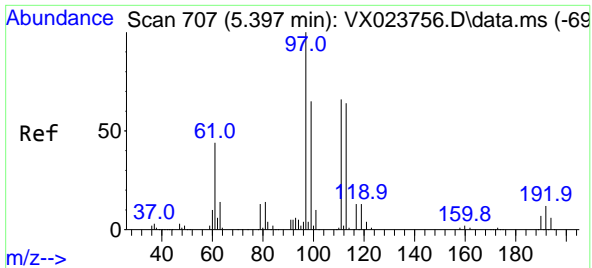
Tgt Ion: 65 Resp: 110125
 Ion Ratio Lower Upper
 65 100
 67 49.2 0.0 105.4



#34
 1,4-Difluorobenzene
 Concen: 50.000 ug/l
 RT: 6.769 min Scan# 932
 Delta R.T. -0.000 min
 Lab File: VX024096.D
 Acq: 03 Sep 2021 12:44

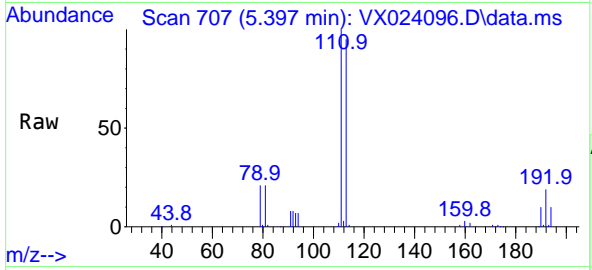
Tgt Ion:114 Resp: 242290
 Ion Ratio Lower Upper
 114 100
 63 20.2 0.0 40.8
 88 16.2 0.0 32.8



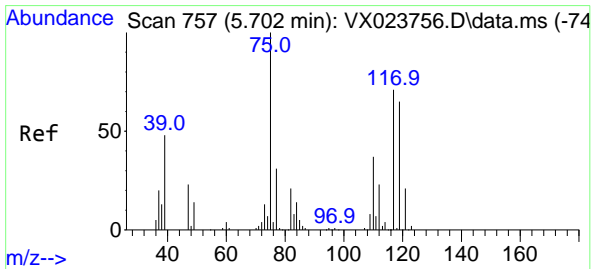
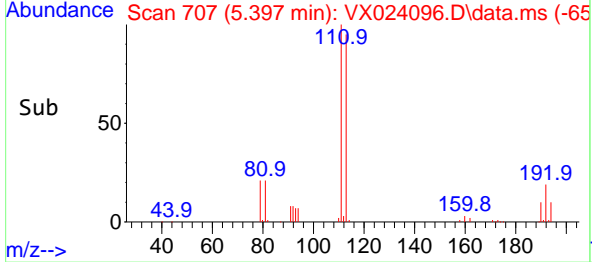
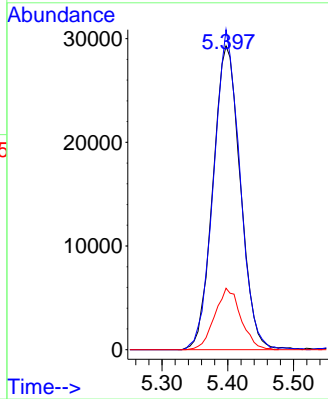


#35
 Dibromofluoromethane
 Concen: 52.763 ug/l
 RT: 5.397 min Scan# 707
 Delta R.T. 0.000 min
 Lab File: VX024096.D
 Acq: 03 Sep 2021 12:44

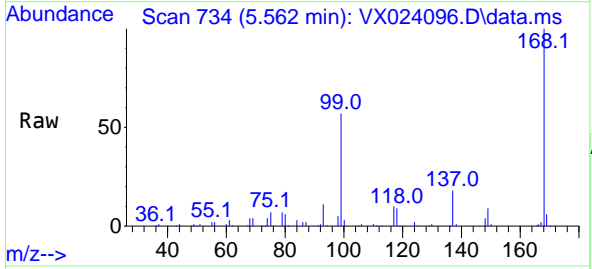
Instrument :
 MSVOA_X
 ClientSampled :



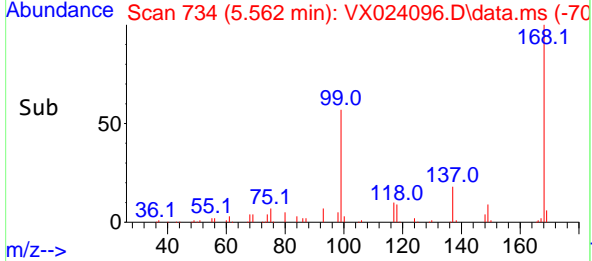
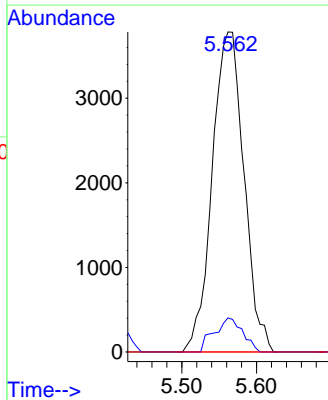
Tgt Ion:113 Resp: 84613
 Ion Ratio Lower Upper
 113 100
 111 101.1 81.9 122.9
 192 19.4 16.7 25.1

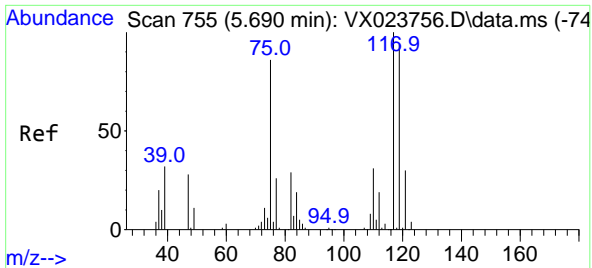


#36
 1,1-Dichloropropene
 Concen: 4.980 ug/l
 RT: 5.562 min Scan# 734
 Delta R.T. -0.140 min
 Lab File: VX024096.D
 Acq: 03 Sep 2021 12:44



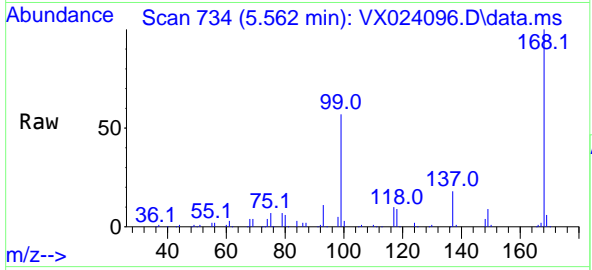
Tgt Ion: 75 Resp: 11174
 Ion Ratio Lower Upper
 75 100
 110 9.5 18.1 54.4#
 77 0.0 25.3 37.9#





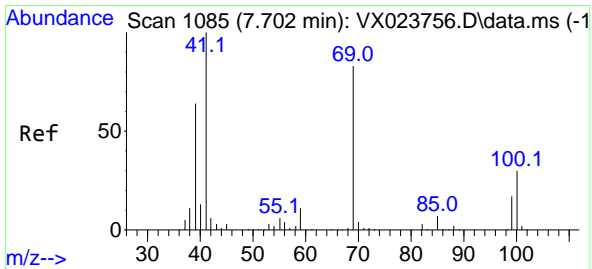
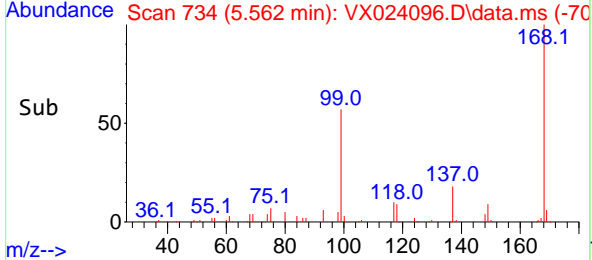
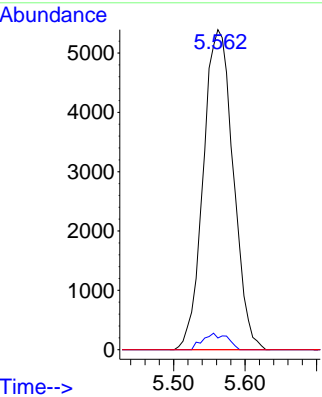
#38
 Carbon Tetrachloride
 Concen: 6.702 ug/l
 RT: 5.562 min Scan# 734
 Delta R.T. -0.128 min
 Lab File: VX024096.D
 Acq: 03 Sep 2021 12:44

Instrument :
 MSVOA_X
 ClientSampled :

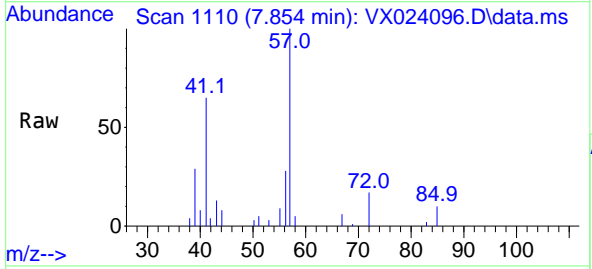


Tgt Ion: 117 Resp: 15680

Ion	Ratio	Lower	Upper
117	100		
119	3.7	76.2	114.2#
121	0.0	24.8	37.2#

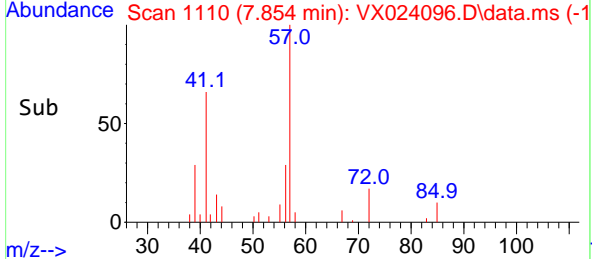
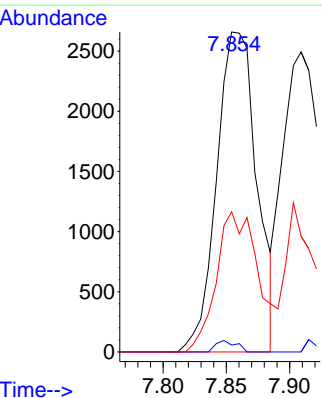


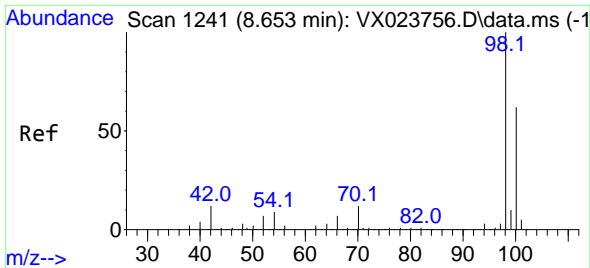
#48
 Methyl methacrylate
 Concen: 2.795 ug/l
 RT: 7.854 min Scan# 1110
 Delta R.T. 0.152 min
 Lab File: VX024096.D
 Acq: 03 Sep 2021 12:44



Tgt Ion: 41 Resp: 5882

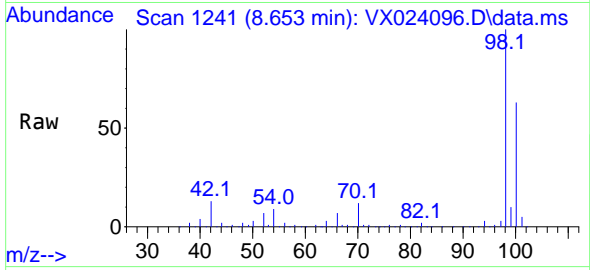
Ion	Ratio	Lower	Upper
41	100		
69	1.8	76.0	114.0#
39	46.4	44.6	67.0



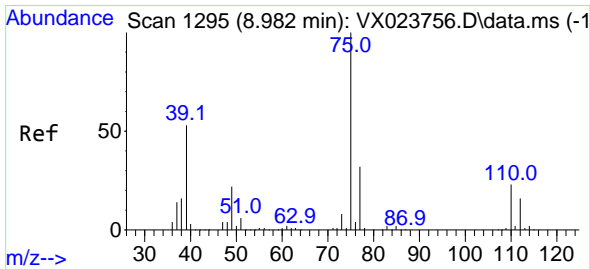
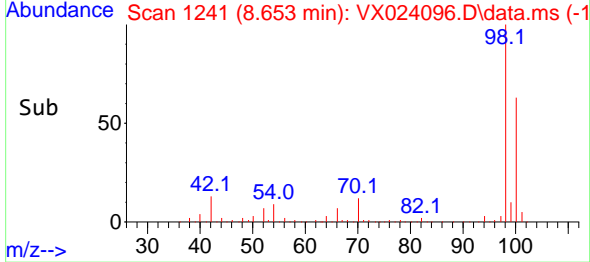
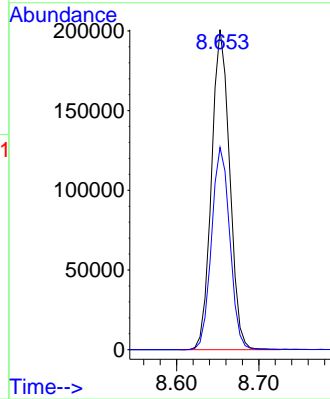


#50
 Toluene-d8
 Concen: 50.443 ug/l
 RT: 8.653 min Scan# 1241
 Delta R.T. -0.000 min
 Lab File: VX024096.D
 Acq: 03 Sep 2021 12:44

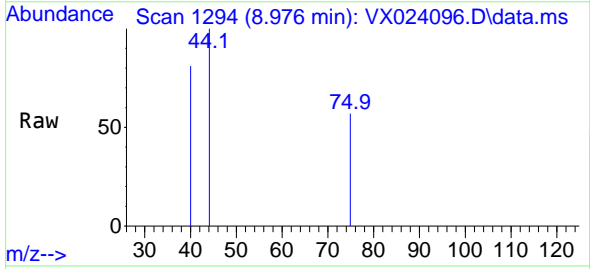
Instrument :
 MSVOA_X
 ClientSampled :



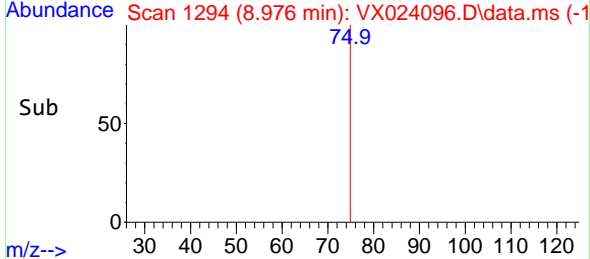
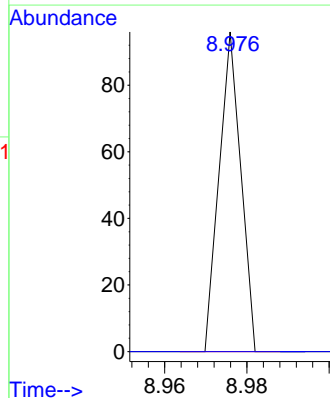
Tgt Ion: 98 Resp: 307887
 Ion Ratio Lower Upper
 98 100
 100 63.6 51.9 77.9

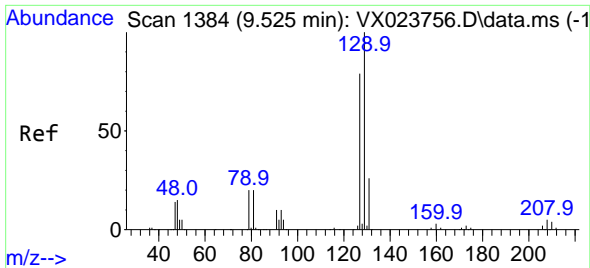


#53
 t-1,3-Dichloropropene
 Concen: 2.149 ug/l
 RT: 8.976 min Scan# 1294
 Delta R.T. -0.006 min
 Lab File: VX024096.D
 Acq: 03 Sep 2021 12:44



Tgt Ion: 75 Resp: 35
 Ion Ratio Lower Upper
 75 100
 77 0.0 24.9 37.3#

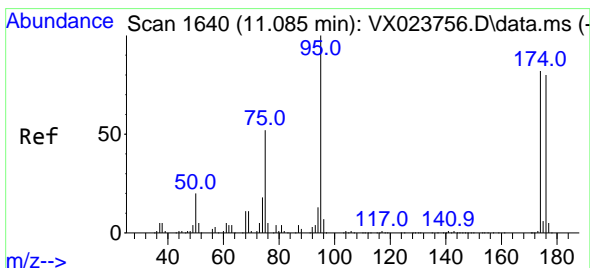
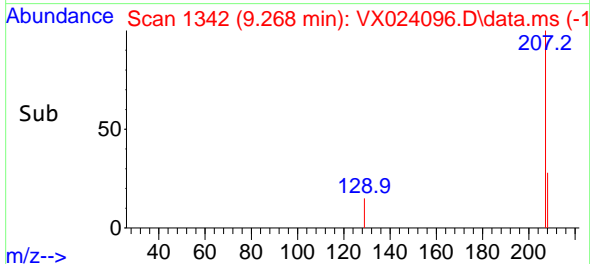
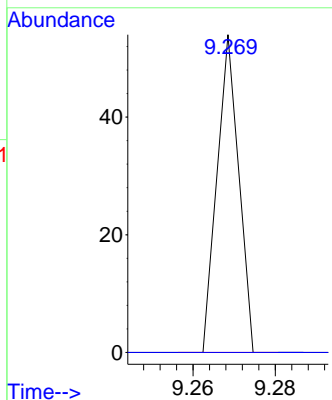
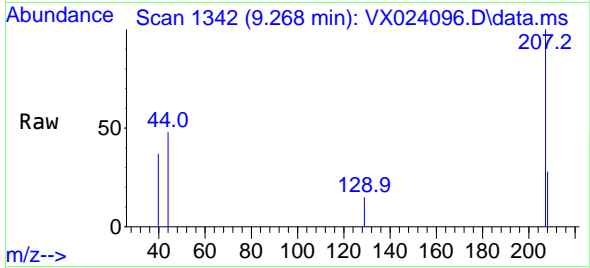




#60
 Dibromochloromethane
 Concen: 1.698 ug/l
 RT: 9.268 min Scan# 1342
 Delta R.T. -0.257 min
 Lab File: VX024096.D
 Acq: 03 Sep 2021 12:44

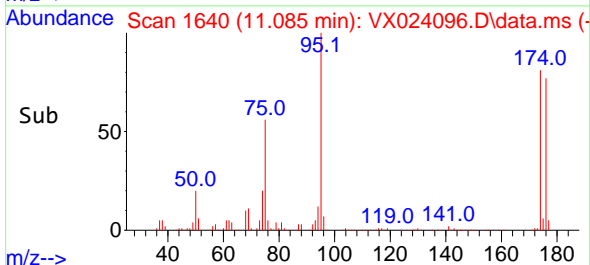
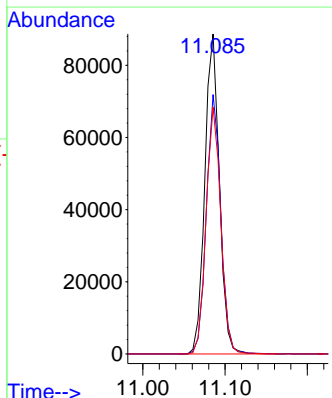
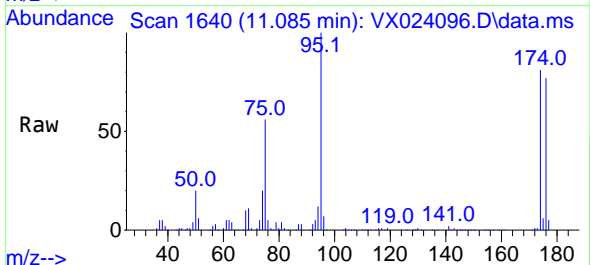
Instrument :
 MSVOA_X
 ClientSampled :

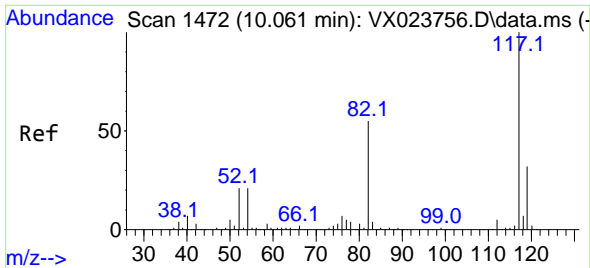
Tgt Ion:129 Resp: 20
 Ion Ratio Lower Upper
 129 100
 127 0.0 38.4 115.2#



#62
 4-Bromofluorobenzene
 Concen: 48.355 ug/l
 RT: 11.085 min Scan# 1640
 Delta R.T. 0.000 min
 Lab File: VX024096.D
 Acq: 03 Sep 2021 12:44

Tgt Ion: 95 Resp: 108649
 Ion Ratio Lower Upper
 95 100
 174 80.8 0.0 154.6
 176 78.3 0.0 155.8

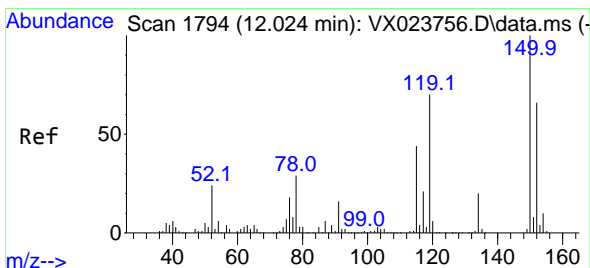
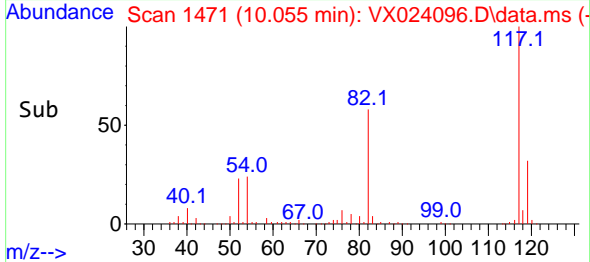
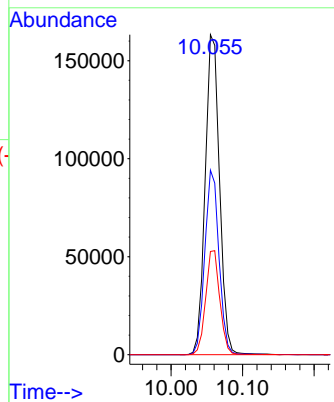
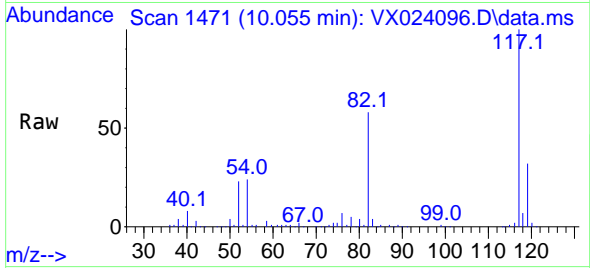




#63
 Chlorobenzene-d5
 Concen: 50.000 ug/l
 RT: 10.055 min Scan# 1471
 Delta R.T. -0.006 min
 Lab File: VX024096.D
 Acq: 03 Sep 2021 12:44

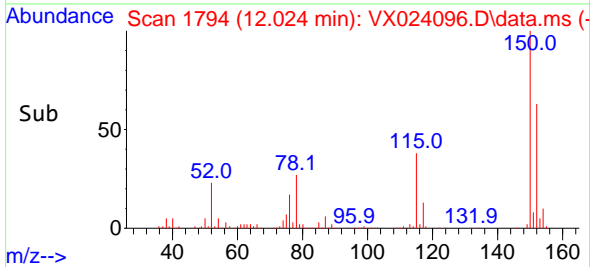
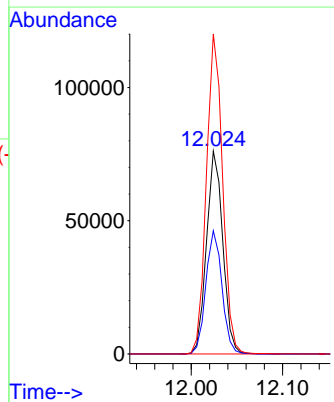
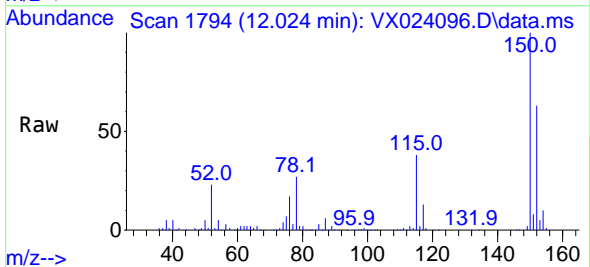
Instrument :
 MSVOA_X
 ClientSampled :

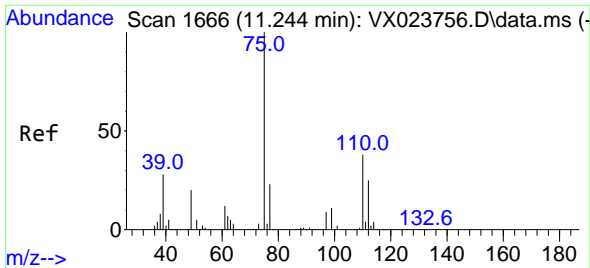
Tgt Ion:117 Resp: 228023
 Ion Ratio Lower Upper
 117 100
 82 57.6 47.4 71.2
 119 32.2 26.6 39.8



#72
 1,4-Dichlorobenzene-d4
 Concen: 50.000 ug/l
 RT: 12.024 min Scan# 1794
 Delta R.T. 0.000 min
 Lab File: VX024096.D
 Acq: 03 Sep 2021 12:44

Tgt Ion:152 Resp: 93955
 Ion Ratio Lower Upper
 152 100
 115 60.1 41.1 123.3
 150 156.6 0.0 349.0

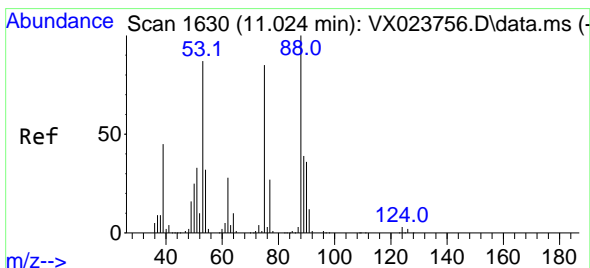
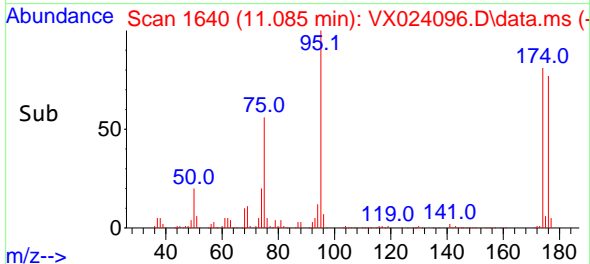
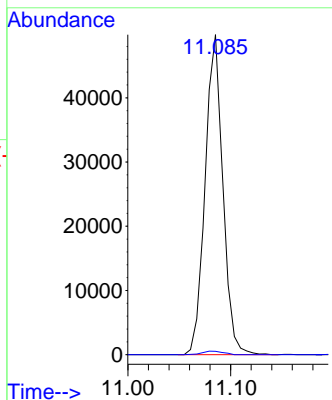
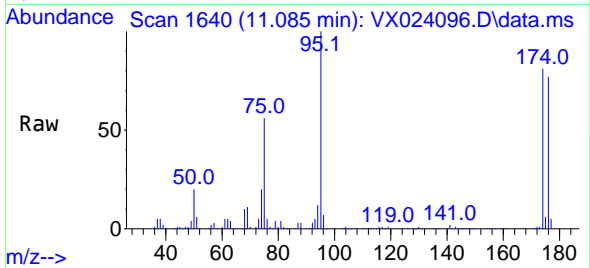




#76
 1,2,3-Trichloropropane
 Concen: 27.242 ug/l
 RT: 11.085 min Scan# 1640
 Delta R.T. -0.159 min
 Lab File: VX024096.D
 Acq: 03 Sep 2021 12:44

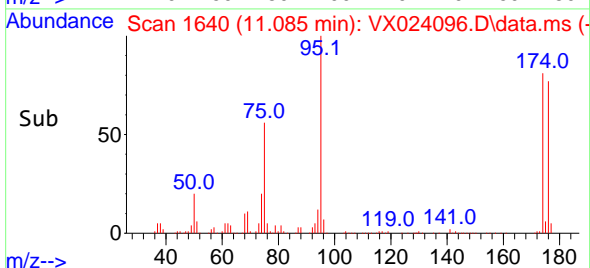
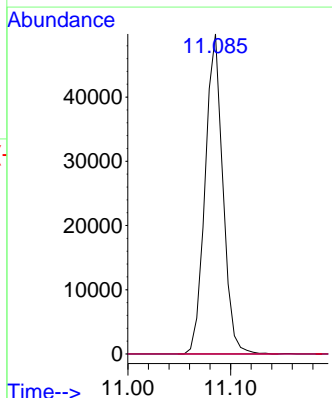
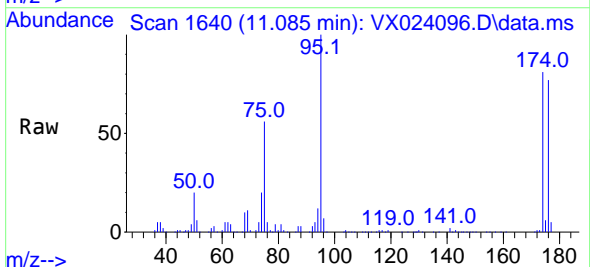
Instrument :
 MSVOA_X
 ClientSampled :

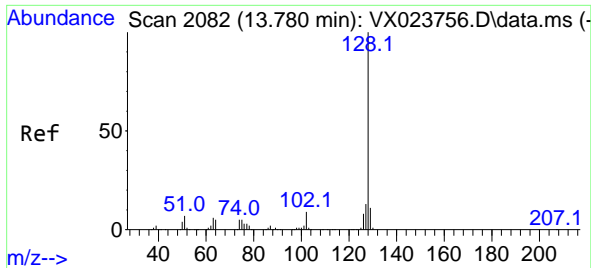
Tgt Ion: 75 Resp: 59706
 Ion Ratio Lower Upper
 75 100
 77 1.3 19.1 57.5#



#81
 trans-1,4-Dichloro-2-butene
 Concen: 80.132 ug/l
 RT: 11.085 min Scan# 1640
 Delta R.T. 0.061 min
 Lab File: VX024096.D
 Acq: 03 Sep 2021 12:44

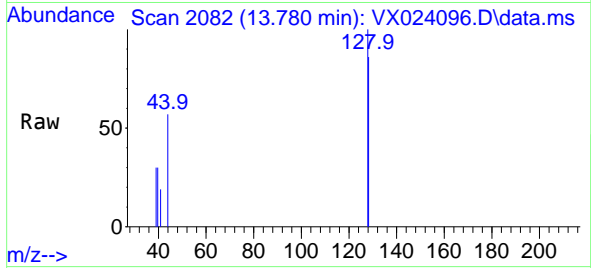
Tgt Ion: 75 Resp: 59706
 Ion Ratio Lower Upper
 75 100
 53 0.0 74.5 111.7#
 89 0.0 37.9 56.9#





#95
 Naphthalene
 Concen: 1.336 ug/l
 RT: 13.780 min Scan# 2082
 Delta R.T. -0.000 min
 Lab File: VX024096.D
 Acq: 03 Sep 2021 12:44

Instrument :
 MSVOA_X
 ClientSampled :



Tgt Ion:128 Resp: 378

Ion	Ratio	Lower	Upper
128	100		
127	10.8	10.3	15.5
129	0.0	8.8	13.2#

