

Data Path : Z:\voasrv\HPCHEM1\MSVOA_X\Data\VX090321\
 Data File : VX024107.D
 Acq On : 03 Sep 2021 17:03
 Operator : JC/MD
 Sample : M3653-01
 Misc : 5.0mL/MSVOA_X/WATER
 ALS Vial : 19 Sample Multiplier: 1

Instrument :
 MSVOA_X
 ClientSampleId :

Quant Time: Sep 04 01:31:11 2021
 Quant Method : Z:\voasrv\HPCHEM1\MSVOA_X\Method\82X081721W.M
 Quant Title : SW846 8260
 QLast Update : Tue Aug 17 11:57:51 2021
 Response via : Initial Calibration

Compound	R.T.	QIon	Response	Conc	Units	Dev(Min)

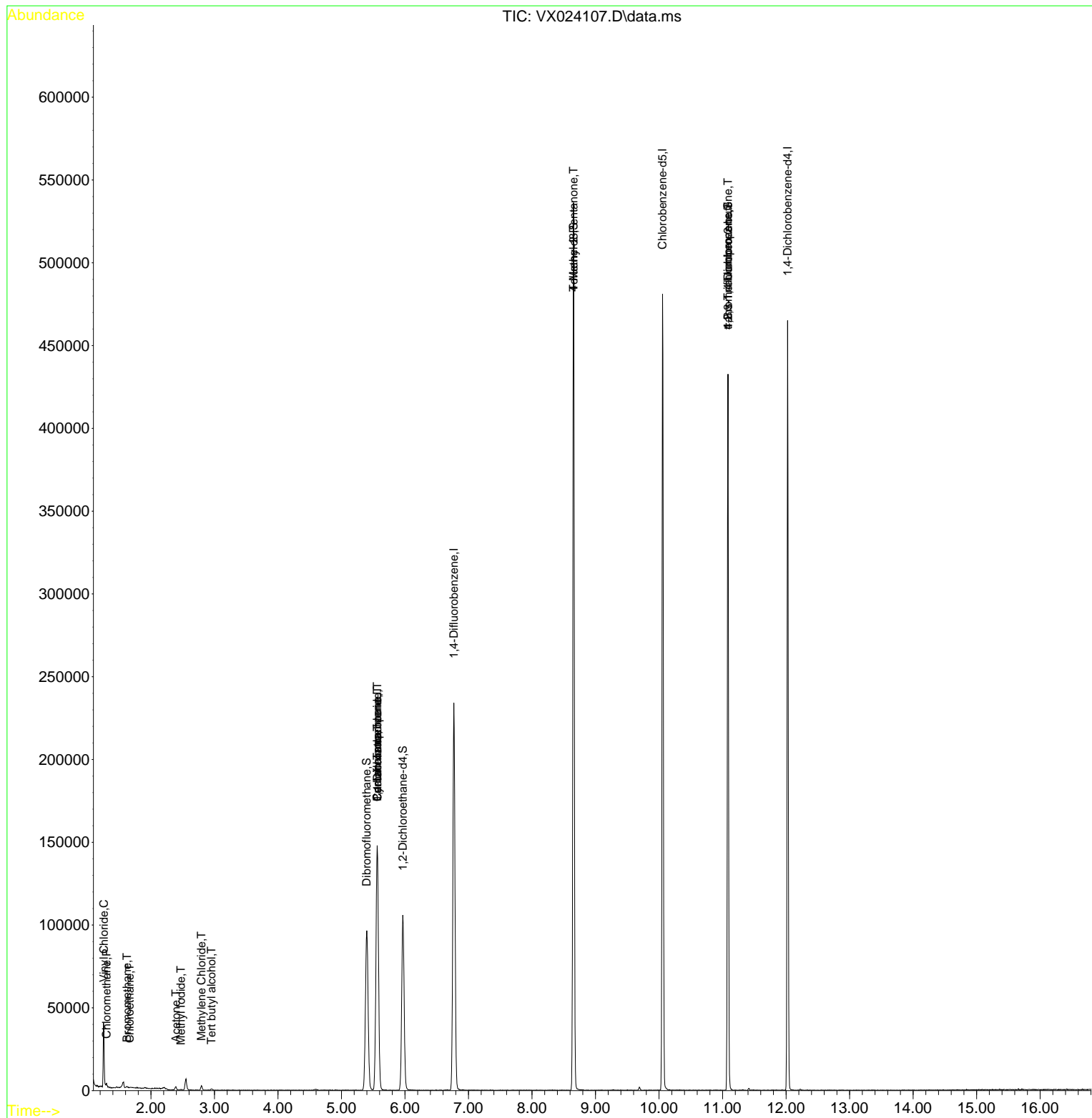
Internal Standards						
1) Pentafluorobenzene	5.562	168	137974	50.000	ug/l	0.00
34) 1,4-Difluorobenzene	6.769	114	228873	50.000	ug/l	0.00
63) Chlorobenzene-d5	10.055	117	212840	50.000	ug/l	0.00
72) 1,4-Dichlorobenzene-d4	12.024	152	90437	50.000	ug/l	0.00
System Monitoring Compounds						
33) 1,2-Dichloroethane-d4	5.964	65	105321	54.693	ug/l	0.00
Spiked Amount	50.000	Range 78 - 117	Recovery	=	109.380%	
35) Dibromofluoromethane	5.397	113	82606	54.531	ug/l	0.00
Spiked Amount	50.000	Range 75 - 124	Recovery	=	109.060%	
50) Toluene-d8	8.653	98	298598	51.789	ug/l	0.00
Spiked Amount	50.000	Range 92 - 112	Recovery	=	103.580%	
62) 4-Bromofluorobenzene	11.085	95	105721	49.810	ug/l	0.00
Spiked Amount	50.000	Range 83 - 123	Recovery	=	99.620%	
Target Compounds						
						Qvalue
3) Chloromethane	1.300	50	1104	0.691	ug/l	94
4) Vinyl Chloride	1.258	62	336	0.216	ug/l #	1
5) Bromomethane	1.624	94	574	0.586	ug/l	91
6) Chloroethane	1.666	64	282	2.424	ug/l #	43
10) Methyl Iodide	2.471	142	535	0.277	ug/l #	70
11) Tert butyl alcohol	2.953	59	498	1.279	ug/l #	73
16) Acetone	2.392	43	2022	2.348	ug/l	95
20) Methylene Chloride	2.794	84	1102	0.670	ug/l #	90
31) Cyclohexane	5.562	56	2978	1.204	ug/l #	18
36) 1,1-Dichloropropene	5.562	75	10759	5.076	ug/l #	51
38) Carbon Tetrachloride	5.562	117	13887	6.283	ug/l #	16
51) 4-Methyl-2-Pentanone	8.653	43	1474	0.560	ug/l #	1
76) 1,2,3-Trichloropropane	11.085	75	58960	27.948	ug/l #	38
81) trans-1,4-Dichloro-2-b...	11.085	75	58960	82.209	ug/l #	12

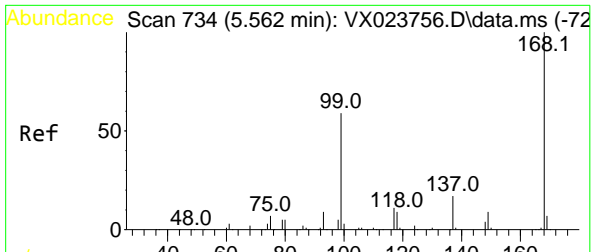
(#) = qualifier out of range (m) = manual integration (+) = signals summed

Data Path : Z:\voasrv\HPCHEM1\MSVOA_X\Data\VX090321\
 Data File : VX024107.D
 Acq On : 03 Sep 2021 17:03
 Operator : JC/MD
 Sample : M3653-01
 Misc : 5.0mL/MSVOA_X/WATER
 ALS Vial : 19 Sample Multiplier: 1

Instrument :
 MSVOA_X
 ClientSampled :

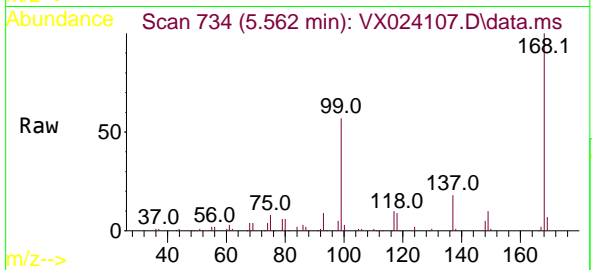
Quant Time: Sep 04 01:31:11 2021
 Quant Method : Z:\voasrv\HPCHEM1\MSVOA_X\Method\82X081721W.M
 Quant Title : SW846 8260
 QLast Update : Tue Aug 17 11:57:51 2021
 Response via : Initial Calibration



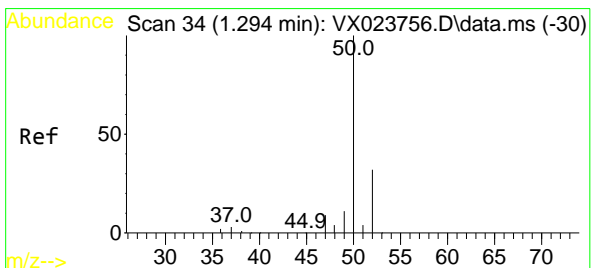
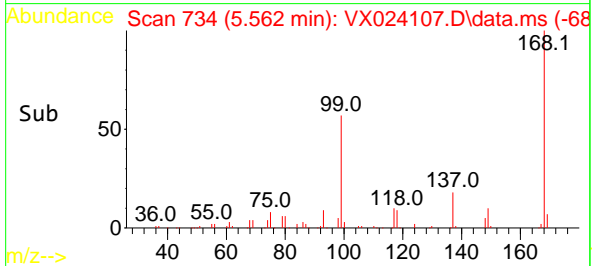
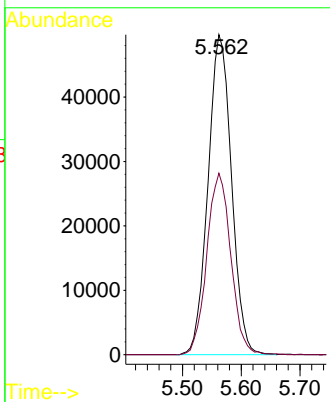


#1
 Pentafluorobenzene
 Concen: 50.000 ug/l
 RT: 5.562 min Scan# 734
 Delta R.T. -0.000 min
 Lab File: VX024107.D
 Acq: 03 Sep 2021 17:03

Instrument :
 MSVOA_X
 ClientSampled :

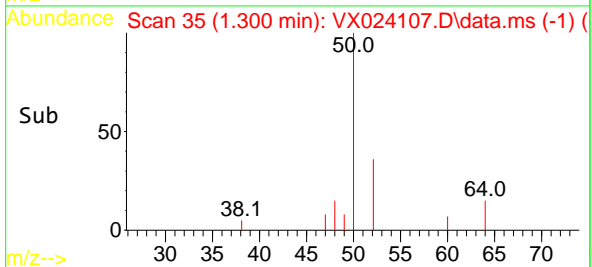
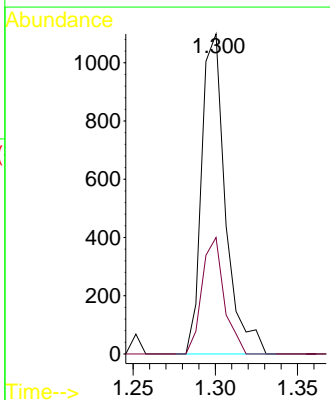
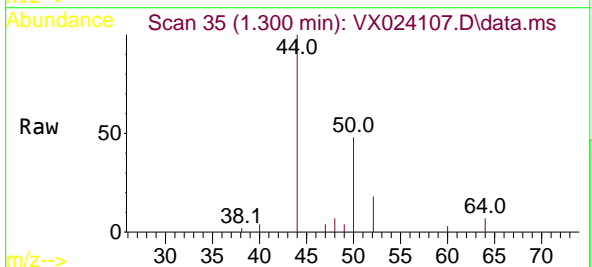


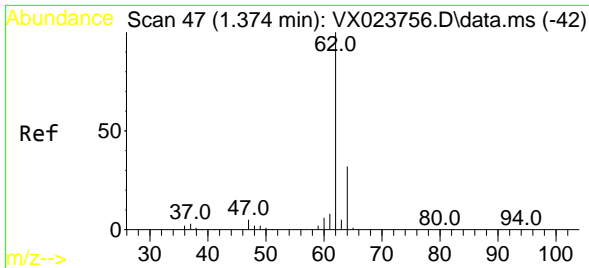
Tgt Ion:168 Resp: 137974
 Ion Ratio Lower Upper
 168 100
 99 56.7 45.8 68.6



#3
 Chloromethane
 Concen: 0.691 ug/l
 RT: 1.300 min Scan# 35
 Delta R.T. 0.006 min
 Lab File: VX024107.D
 Acq: 03 Sep 2021 17:03

Tgt Ion: 50 Resp: 1104
 Ion Ratio Lower Upper
 50 100
 52 36.4 26.4 39.6

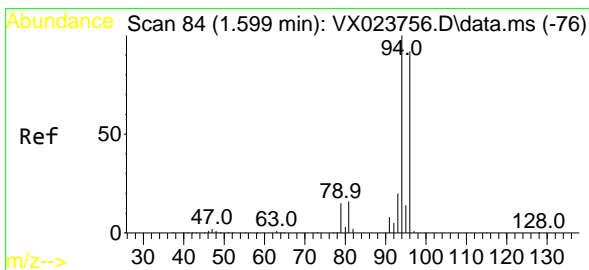
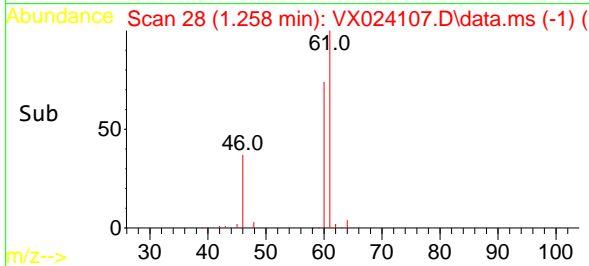
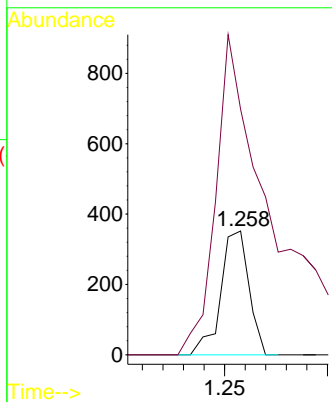
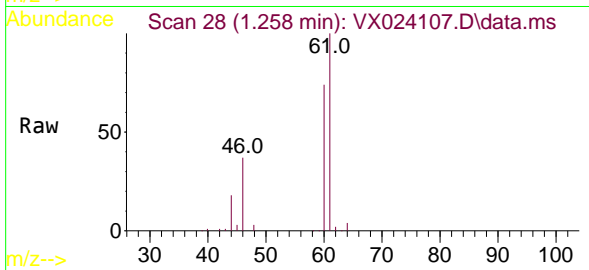




#4
 Vinyl Chloride
 Concen: 0.216 ug/l
 RT: 1.258 min Scan# 28
 Delta R.T. -0.116 min
 Lab File: VX024107.D
 Acq: 03 Sep 2021 17:03

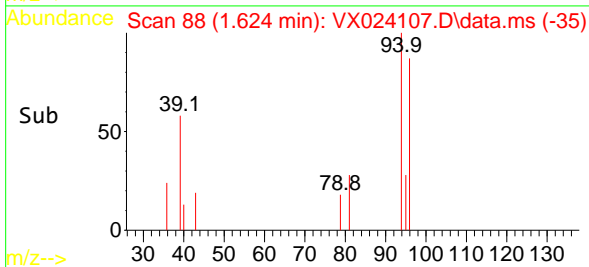
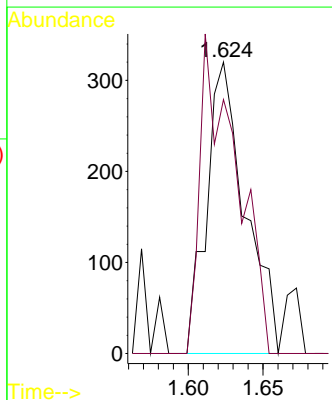
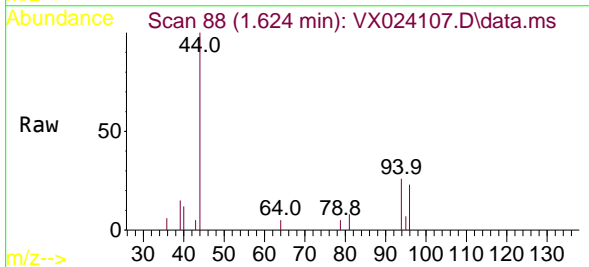
Instrument :
 MSVOA_X
 ClientSampled :

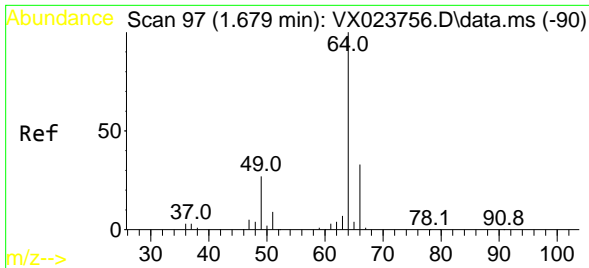
Tgt Ion: 62 Resp: 336
 Ion Ratio Lower Upper
 62 100
 64 198.3 25.7 38.5#



#5
 Bromomethane
 Concen: 0.586 ug/l
 RT: 1.624 min Scan# 88
 Delta R.T. 0.025 min
 Lab File: VX024107.D
 Acq: 03 Sep 2021 17:03

Tgt Ion: 94 Resp: 574
 Ion Ratio Lower Upper
 94 100
 96 87.2 76.4 114.6

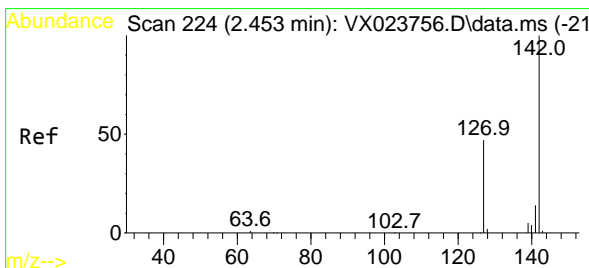
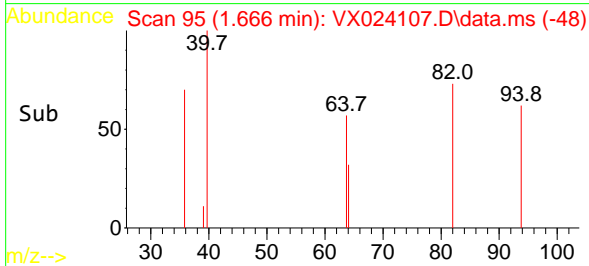
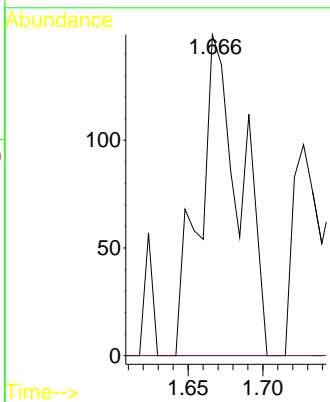
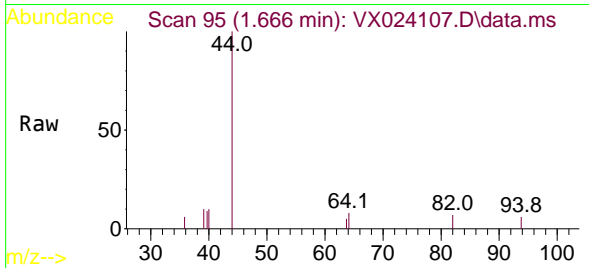




#6
 Chloroethane
 Concen: 2.424 ug/l
 RT: 1.666 min Scan# 95
 Delta R.T. -0.013 min
 Lab File: VX024107.D
 Acq: 03 Sep 2021 17:03

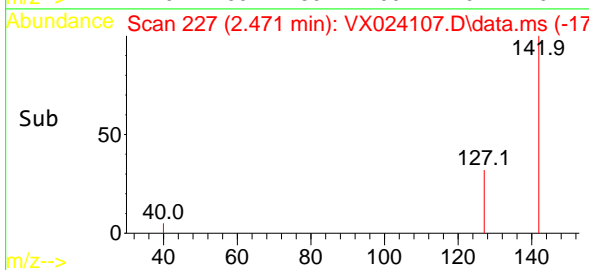
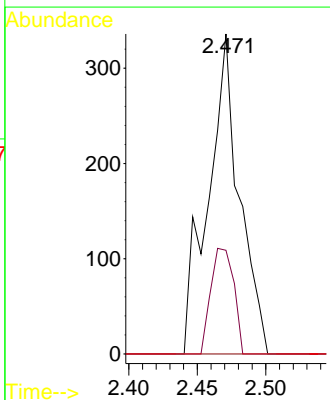
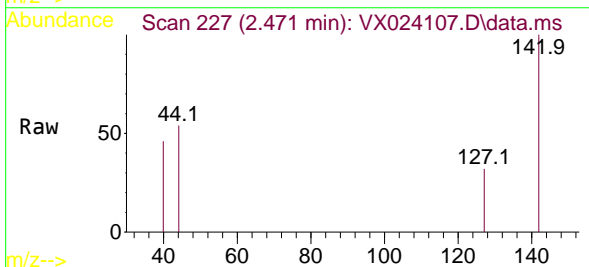
Instrument :
 MSVOA_X
 ClientSampled :

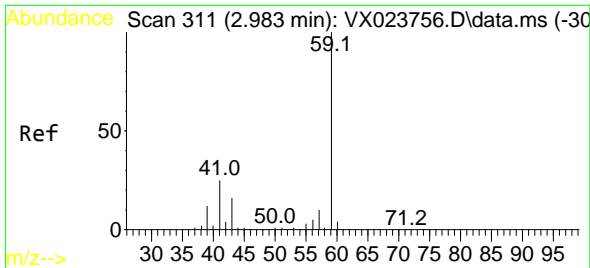
Tgt Ion: 64 Resp: 282
 Ion Ratio Lower Upper
 64 100
 66 0.0 25.4 38.0#



#10
 Methyl Iodide
 Concen: 0.277 ug/l
 RT: 2.471 min Scan# 227
 Delta R.T. 0.018 min
 Lab File: VX024107.D
 Acq: 03 Sep 2021 17:03

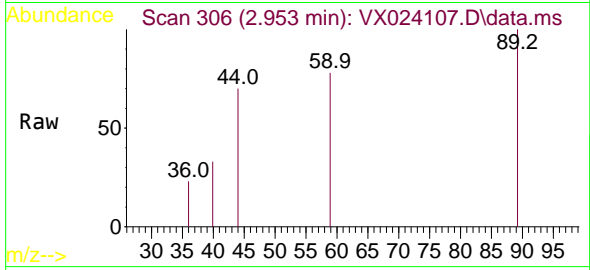
Tgt Ion:142 Resp: 535
 Ion Ratio Lower Upper
 142 100
 127 24.1 33.3 49.9#
 141 0.0 11.4 17.0#



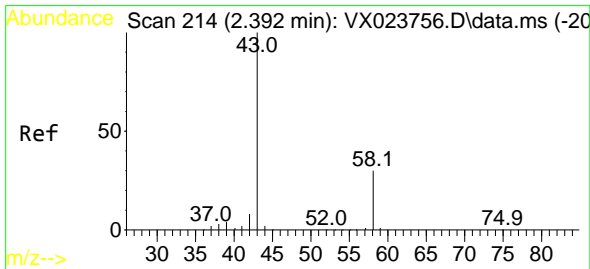
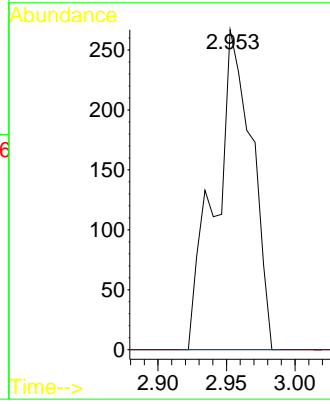
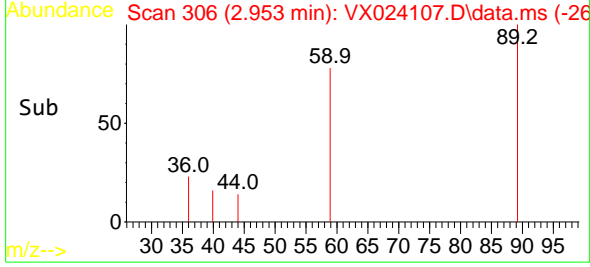


#11
 Tert butyl alcohol
 Concen: 1.279 ug/l
 RT: 2.953 min Scan# 306
 Delta R.T. -0.030 min
 Lab File: VX024107.D
 Acq: 03 Sep 2021 17:03

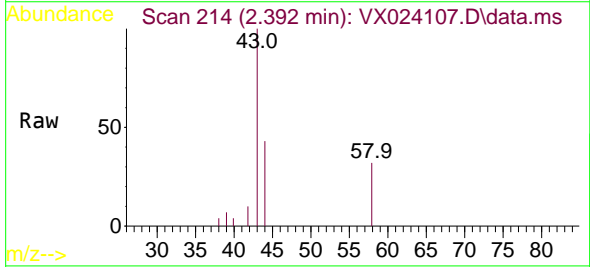
Instrument :
 MSVOA_X
 ClientSampled :



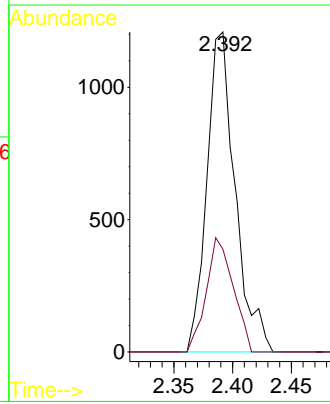
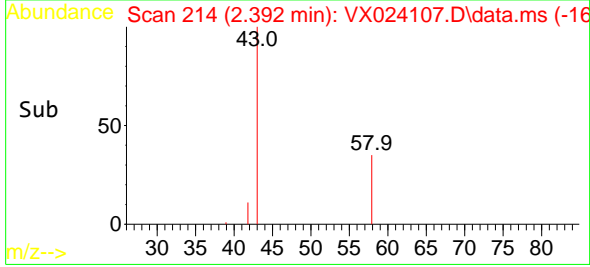
Tgt Ion: 59 Resp: 498
 Ion Ratio Lower Upper
 59 100
 57 0.0 7.8 11.8#

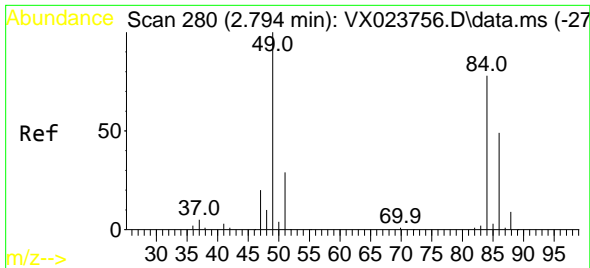


#16
 Acetone
 Concen: 2.348 ug/l
 RT: 2.392 min Scan# 214
 Delta R.T. -0.000 min
 Lab File: VX024107.D
 Acq: 03 Sep 2021 17:03



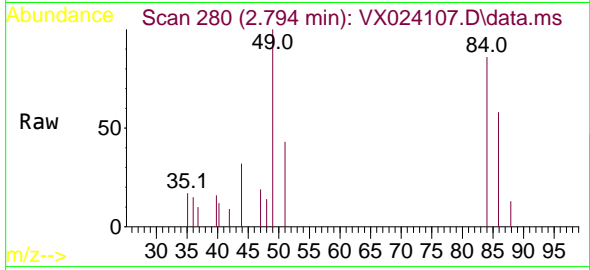
Tgt Ion: 43 Resp: 2022
 Ion Ratio Lower Upper
 43 100
 58 32.1 27.8 41.8





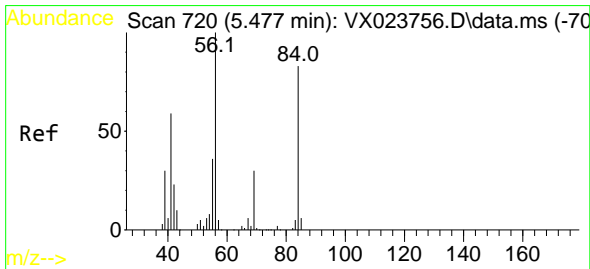
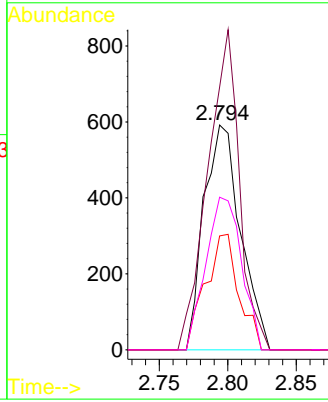
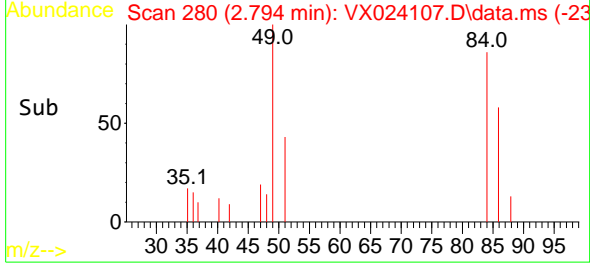
#20
 Methylene Chloride
 Concen: 0.670 ug/l
 RT: 2.794 min Scan# 280
 Delta R.T. 0.000 min
 Lab File: VX024107.D
 Acq: 03 Sep 2021 17:03

Instrument :
 MSVOA_X
 ClientSampled :

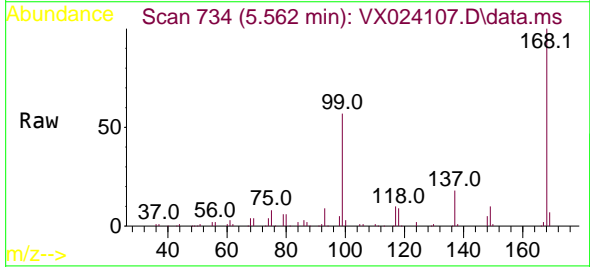


Tgt Ion: 84 Resp: 1102

Ion	Ratio	Lower	Upper
84	100		
49	116.9	88.6	132.8
51	50.7	27.0	40.6#
86	67.9	50.3	75.5

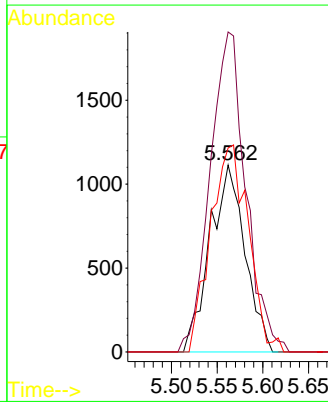
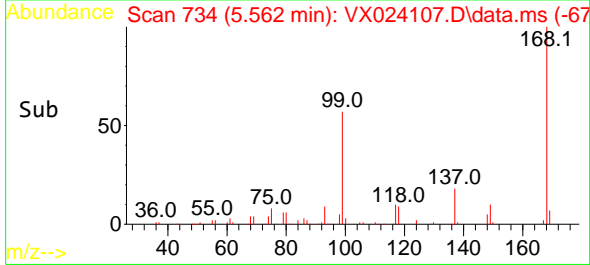


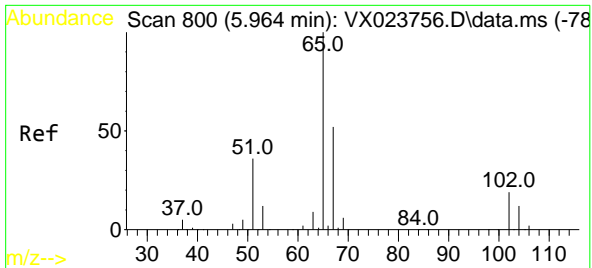
#31
 Cyclohexane
 Concen: 1.204 ug/l
 RT: 5.562 min Scan# 734
 Delta R.T. 0.085 min
 Lab File: VX024107.D
 Acq: 03 Sep 2021 17:03



Tgt Ion: 56 Resp: 2978

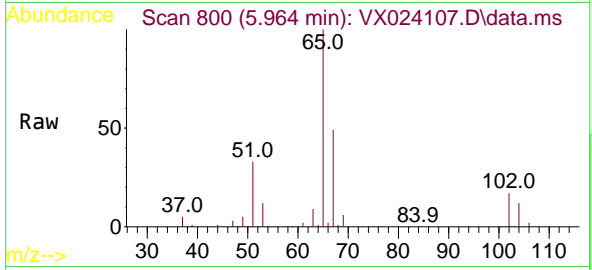
Ion	Ratio	Lower	Upper
56	100		
69	171.2	25.3	37.9#
84	109.2	71.4	107.0#



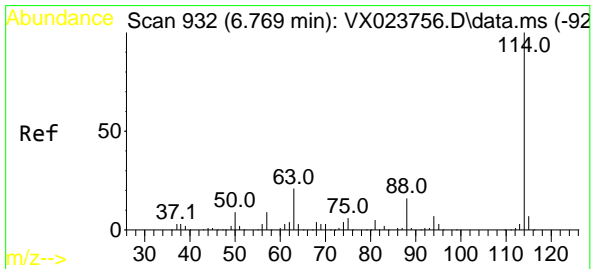
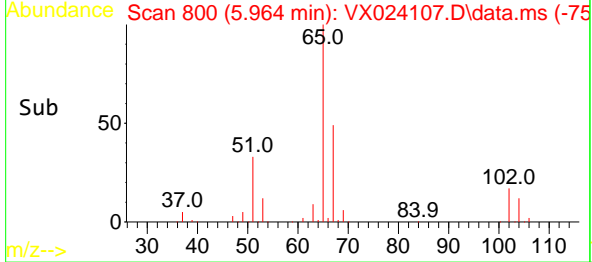
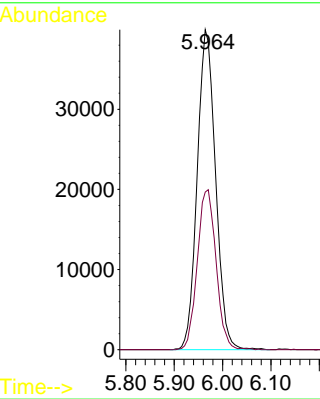


#33
 1,2-Dichloroethane-d4
 Concen: 54.693 ug/l
 RT: 5.964 min Scan# 800
 Delta R.T. 0.000 min
 Lab File: VX024107.D
 Acq: 03 Sep 2021 17:03

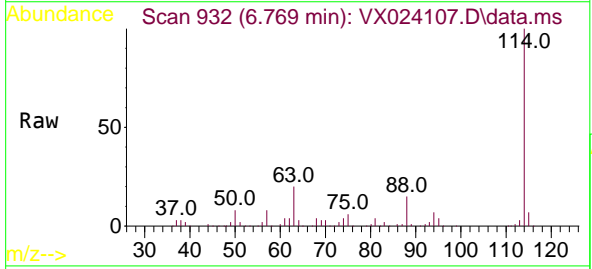
Instrument :
 MSVOA_X
 ClientSampled :



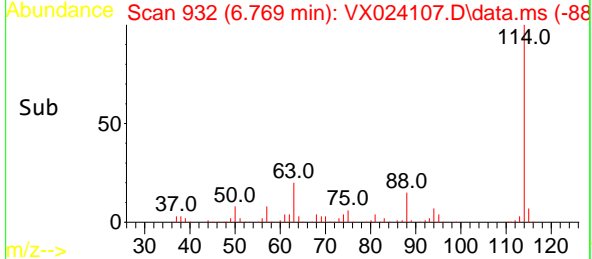
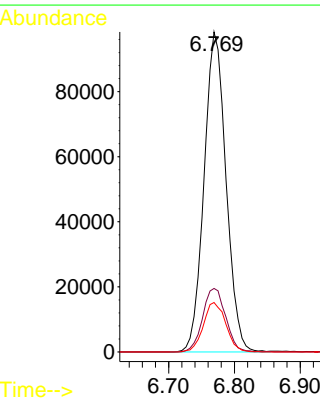
Tgt Ion: 65 Resp: 105321
 Ion Ratio Lower Upper
 65 100
 67 51.1 0.0 105.4

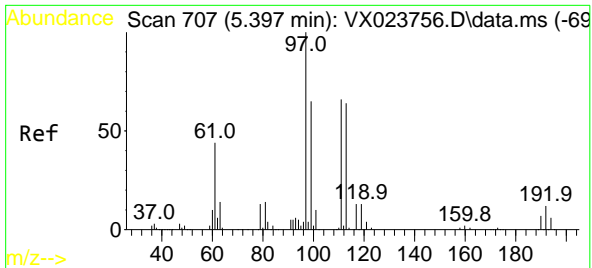


#34
 1,4-Difluorobenzene
 Concen: 50.000 ug/l
 RT: 6.769 min Scan# 932
 Delta R.T. -0.000 min
 Lab File: VX024107.D
 Acq: 03 Sep 2021 17:03



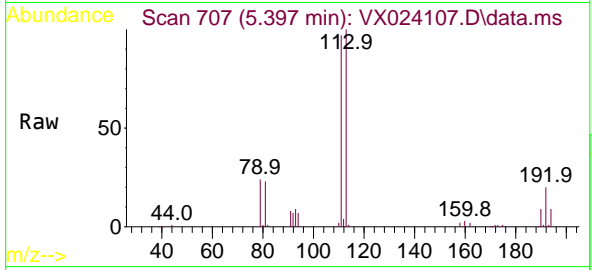
Tgt Ion: 114 Resp: 228873
 Ion Ratio Lower Upper
 114 100
 63 19.8 0.0 40.8
 88 15.5 0.0 32.8



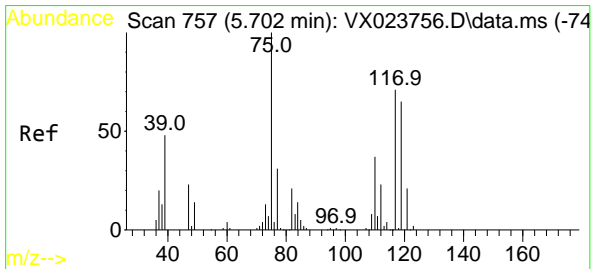
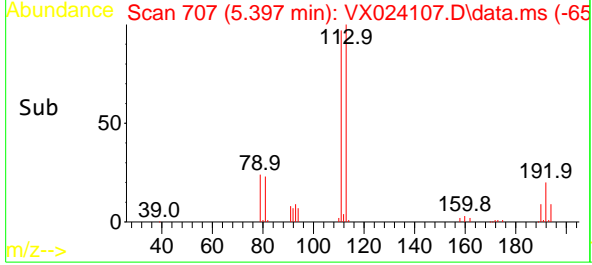
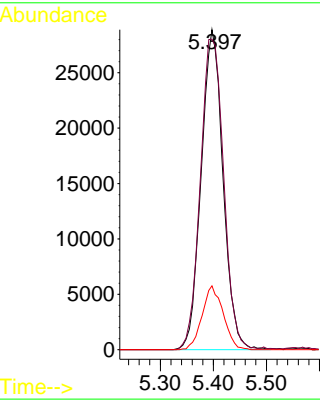


#35
 Dibromofluoromethane
 Concen: 54.531 ug/l
 RT: 5.397 min Scan# 707
 Delta R.T. 0.000 min
 Lab File: VX024107.D
 Acq: 03 Sep 2021 17:03

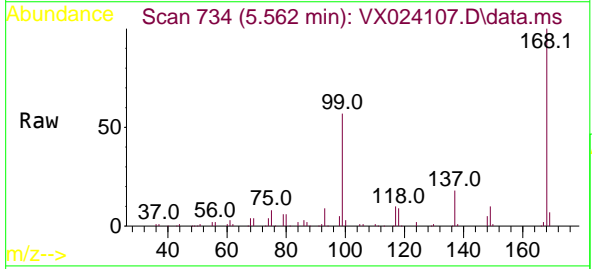
Instrument :
 MSVOA_X
 ClientSampled :



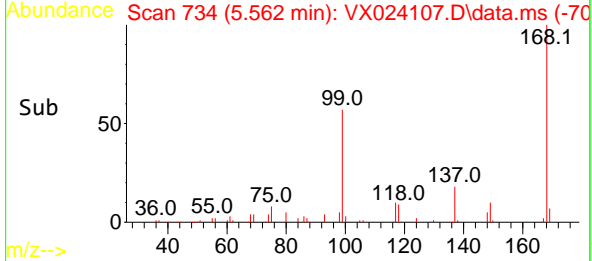
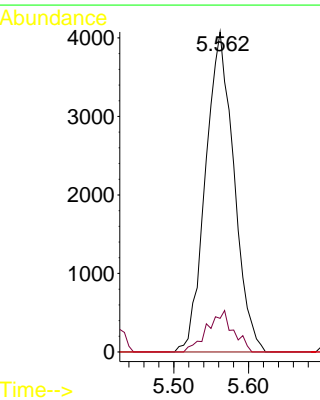
Tgt Ion:113 Resp: 82606
 Ion Ratio Lower Upper
 113 100
 111 103.7 81.9 122.9
 192 19.3 16.7 25.1

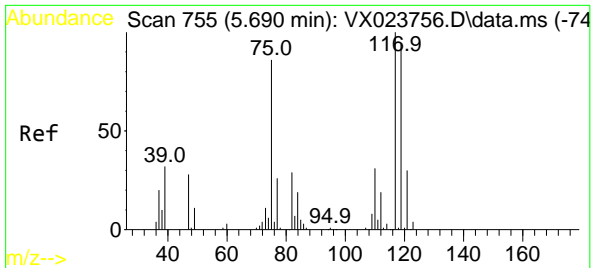


#36
 1,1-Dichloropropene
 Concen: 5.076 ug/l
 RT: 5.562 min Scan# 734
 Delta R.T. -0.140 min
 Lab File: VX024107.D
 Acq: 03 Sep 2021 17:03



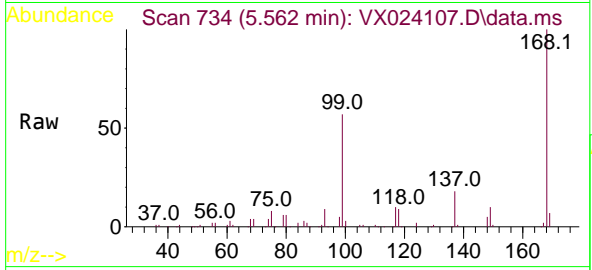
Tgt Ion: 75 Resp: 10759
 Ion Ratio Lower Upper
 75 100
 110 11.8 18.1 54.4#
 77 0.0 25.3 37.9#



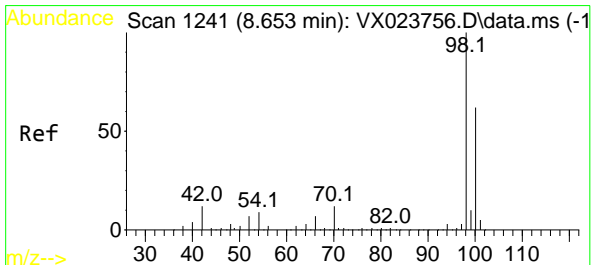
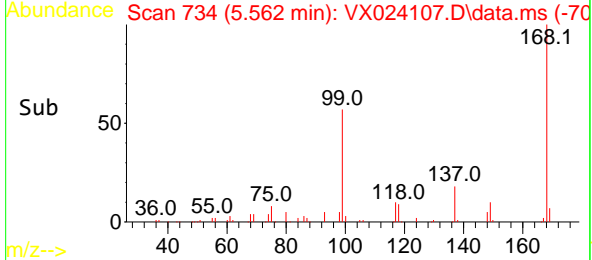
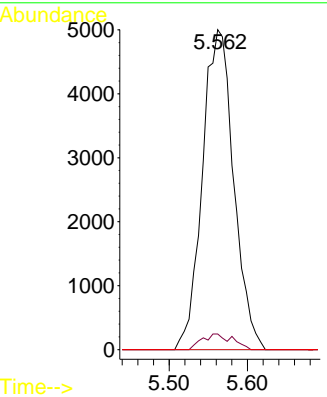


#38
 Carbon Tetrachloride
 Concen: 6.283 ug/l
 RT: 5.562 min Scan# 734
 Delta R.T. -0.128 min
 Lab File: VX024107.D
 Acq: 03 Sep 2021 17:03

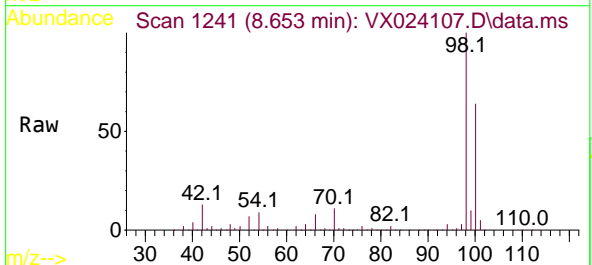
Instrument :
 MSVOA_X
 ClientSampled :



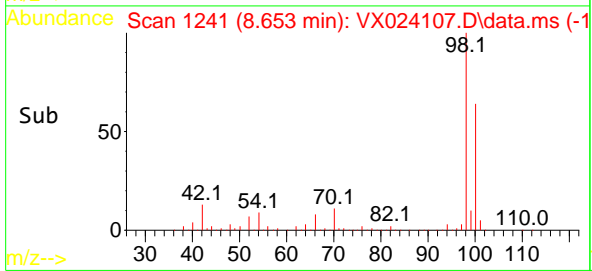
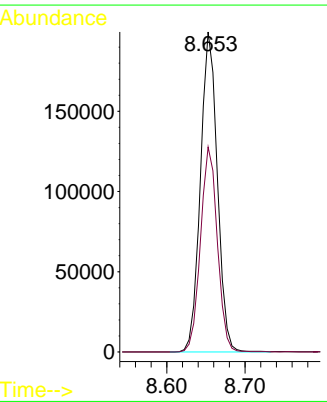
Tgt Ion:117 Resp: 13887
 Ion Ratio Lower Upper
 117 100
 119 4.9 76.2 114.2#
 121 0.0 24.8 37.2#

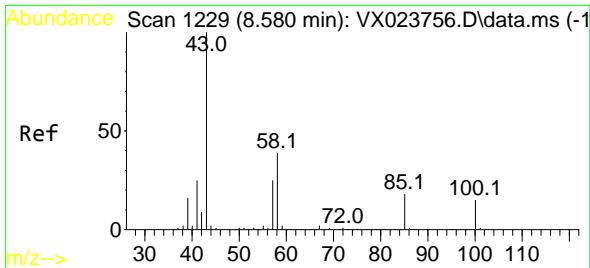


#50
 Toluene-d8
 Concen: 51.789 ug/l
 RT: 8.653 min Scan# 1241
 Delta R.T. -0.000 min
 Lab File: VX024107.D
 Acq: 03 Sep 2021 17:03



Tgt Ion: 98 Resp: 298598
 Ion Ratio Lower Upper
 98 100
 100 63.8 51.9 77.9

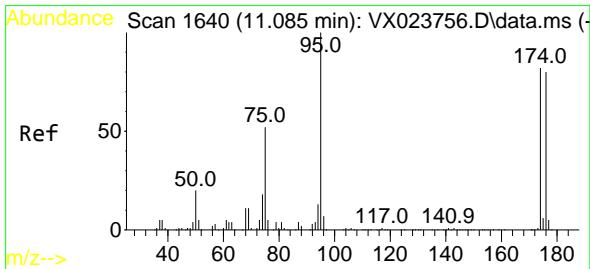
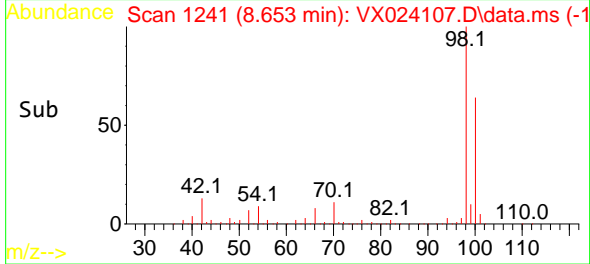
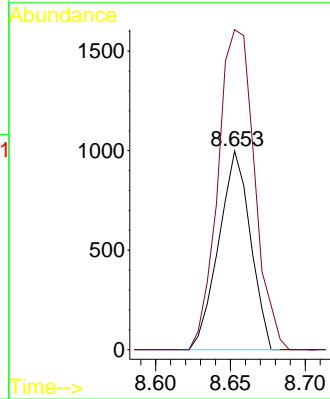
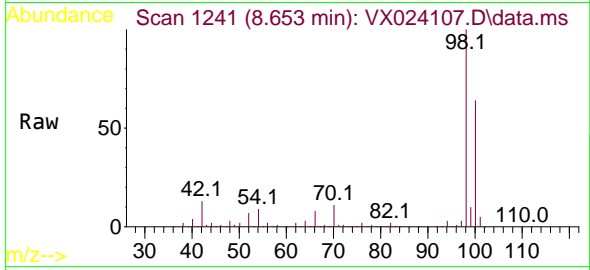




#51
 4-Methyl-2-Pentanone
 Concen: 0.560 ug/l
 RT: 8.653 min Scan# 1241
 Delta R.T. 0.073 min
 Lab File: VX024107.D
 Acq: 03 Sep 2021 17:03

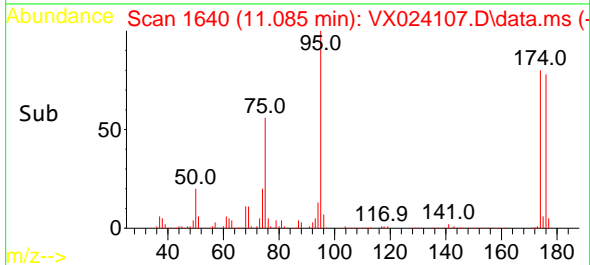
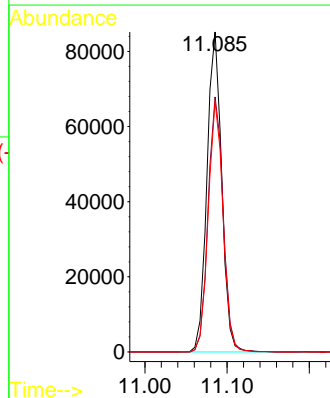
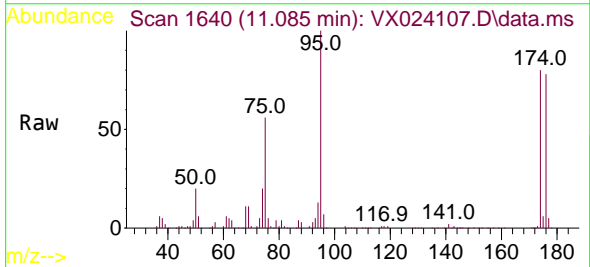
Instrument :
 MSVOA_X
 ClientSampled :

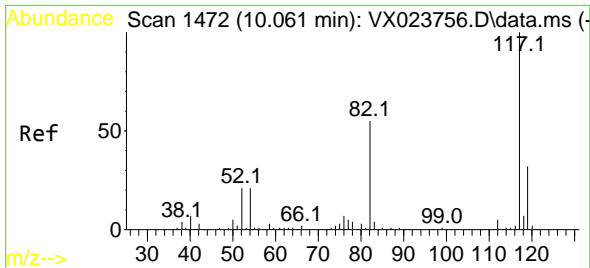
Tgt Ion: 43 Resp: 1474
 Ion Ratio Lower Upper
 43 100
 58 185.7 35.4 53.0#



#62
 4-Bromofluorobenzene
 Concen: 49.810 ug/l
 RT: 11.085 min Scan# 1640
 Delta R.T. 0.000 min
 Lab File: VX024107.D
 Acq: 03 Sep 2021 17:03

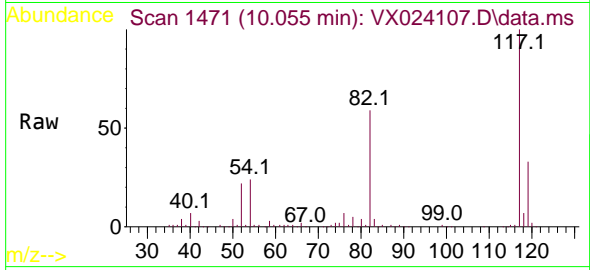
Tgt Ion: 95 Resp: 105721
 Ion Ratio Lower Upper
 95 100
 174 82.1 0.0 154.6
 176 78.7 0.0 155.8



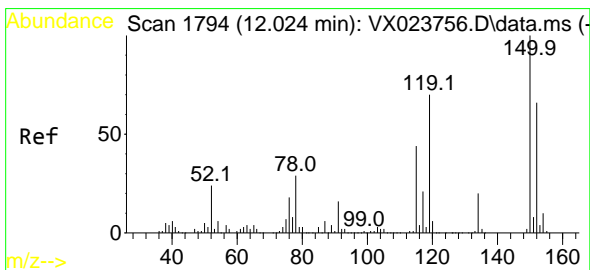
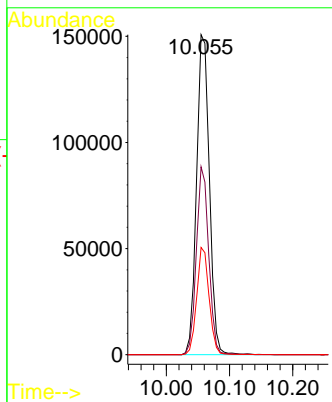
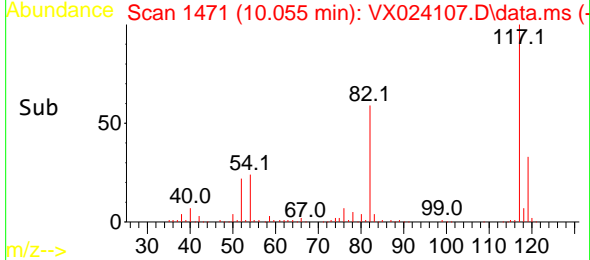


#63
 Chlorobenzene-d5
 Concen: 50.000 ug/l
 RT: 10.055 min Scan# 1471
 Delta R.T. -0.006 min
 Lab File: VX024107.D
 Acq: 03 Sep 2021 17:03

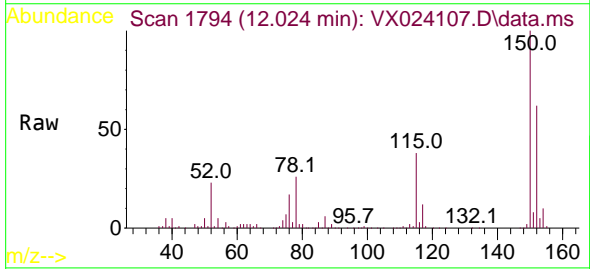
Instrument :
 MSVOA_X
 ClientSampled :



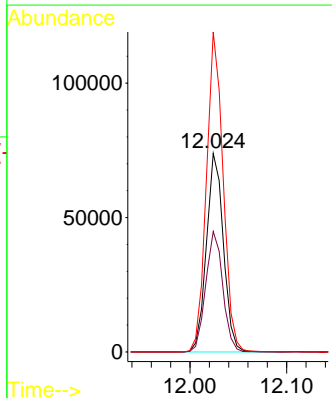
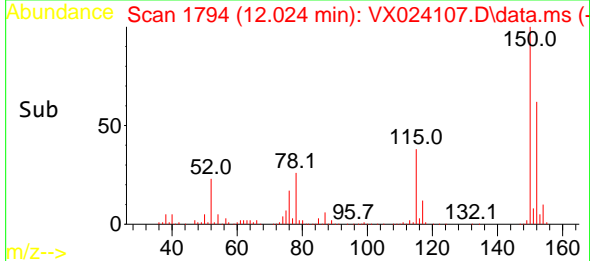
Tgt Ion:117 Resp: 212840
 Ion Ratio Lower Upper
 117 100
 82 58.7 47.4 71.2
 119 33.5 26.6 39.8

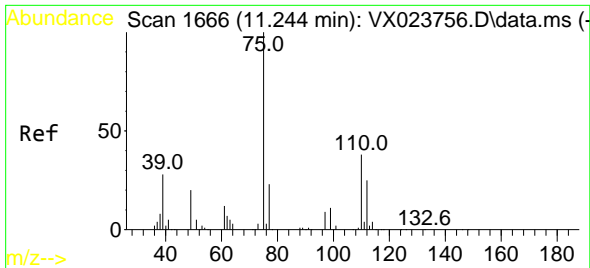


#72
 1,4-Dichlorobenzene-d4
 Concen: 50.000 ug/l
 RT: 12.024 min Scan# 1794
 Delta R.T. 0.000 min
 Lab File: VX024107.D
 Acq: 03 Sep 2021 17:03



Tgt Ion:152 Resp: 90437
 Ion Ratio Lower Upper
 152 100
 115 60.9 41.1 123.3
 150 157.9 0.0 349.0

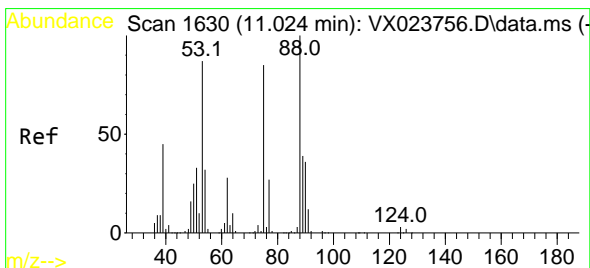
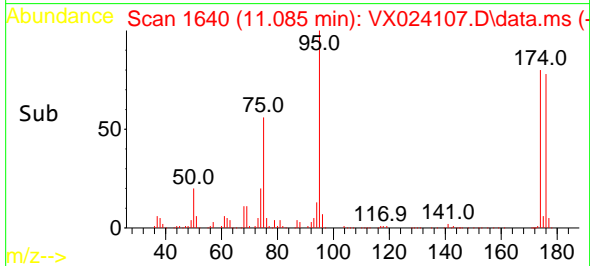
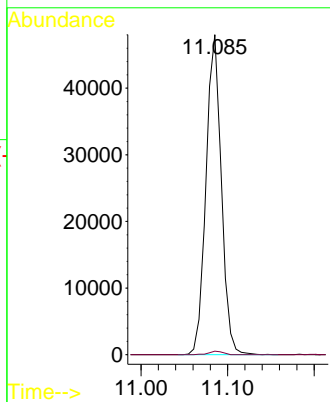
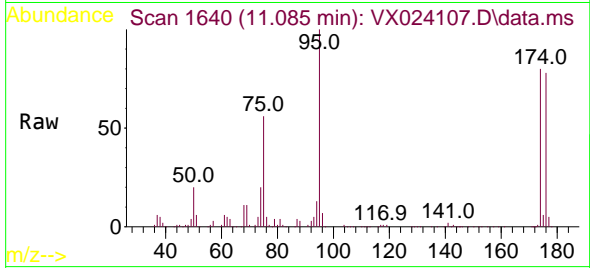




#76
 1,2,3-Trichloropropane
 Concen: 27.948 ug/l
 RT: 11.085 min Scan# 1640
 Delta R.T. -0.159 min
 Lab File: VX024107.D
 Acq: 03 Sep 2021 17:03

Instrument :
 MSVOA_X
 ClientSampled :

Tgt Ion: 75 Resp: 58960
 Ion Ratio Lower Upper
 75 100
 77 1.0 19.1 57.5#



#81
 trans-1,4-Dichloro-2-butene
 Concen: 82.209 ug/l
 RT: 11.085 min Scan# 1640
 Delta R.T. 0.061 min
 Lab File: VX024107.D
 Acq: 03 Sep 2021 17:03

Tgt Ion: 75 Resp: 58960
 Ion Ratio Lower Upper
 75 100
 53 0.0 74.5 111.7#
 89 0.1 37.9 56.9#

