

Data Path : Z:\voasrv\HPCHEM1\MSVOA_X\Data\VX090322\
 Data File : VX031100.D
 Acq On : 03 Sep 2022 22:08
 Operator : JC/MD
 Sample : N4357-20
 Misc : 5.0mL/MSVOA_X/WATER
 ALS Vial : 21 Sample Multiplier: 1

Instrument :
 MSVOA_X
 ClientSampleId :
 DUP10-20220823

Quant Time: Sep 06 00:18:29 2022
 Quant Method : Z:\voasrv\HPCHEM1\MSVOA_X\Method\82X090122W.M
 Quant Title : SW846 8260
 QLast Update : Fri Sep 02 02:49:21 2022
 Response via : Initial Calibration

Compound	R.T.	QIon	Response	Conc	Units	Dev(Min)

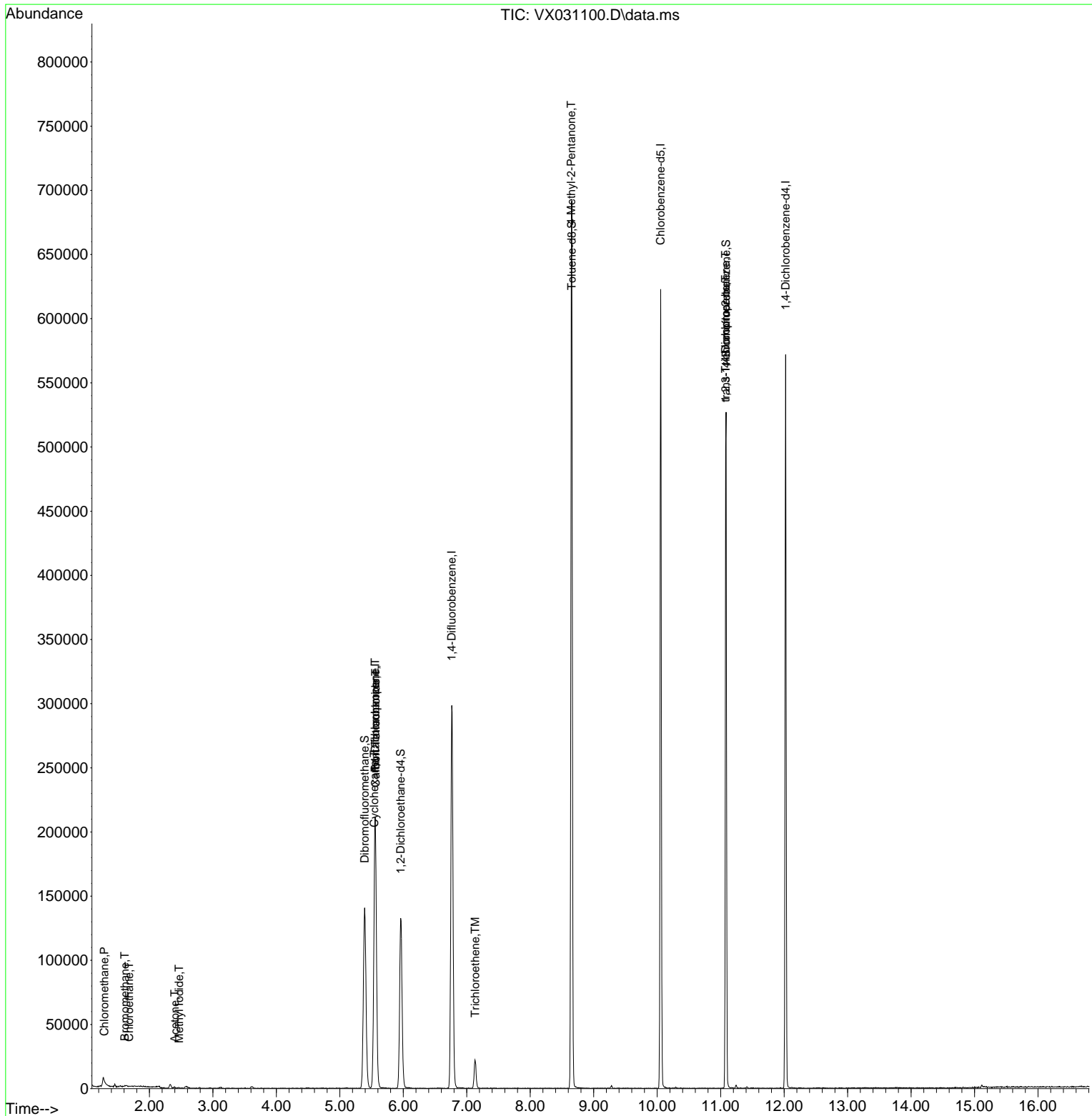
Internal Standards						
1) Pentafluorobenzene	5.556	168	212085	50.000	ug/l	0.00
34) 1,4-Difluorobenzene	6.763	114	332900	50.000	ug/l	0.00
63) Chlorobenzene-d5	10.055	117	300102	50.000	ug/l	0.00
72) 1,4-Dichlorobenzene-d4	12.024	152	127768	50.000	ug/l	0.00
System Monitoring Compounds						
33) 1,2-Dichloroethane-d4	5.958	65	132955	48.721	ug/l	0.00
Spiked Amount	50.000	Range	74 - 125	Recovery	=	97.440%
35) Dibromofluoromethane	5.391	113	126358	52.012	ug/l	0.00
Spiked Amount	50.000	Range	75 - 124	Recovery	=	104.020%
50) Toluene-d8	8.653	98	437834	48.969	ug/l	0.00
Spiked Amount	50.000	Range	86 - 113	Recovery	=	97.940%
62) 4-Bromofluorobenzene	11.085	95	143120	45.321	ug/l	0.00
Spiked Amount	50.000	Range	83 - 123	Recovery	=	90.640%
Target Compounds						
						Qvalue
3) Chloromethane	1.288	50	553	0.962	ug/l #	80
5) Bromomethane	1.611	94	206	0.202	ug/l #	74
6) Chloroethane	1.678	64	327	1.928	ug/l #	41
10) Methyl Iodide	2.465	142	627	3.148	ug/l #	86
11) Tert butyl alcohol	2.947	59	163	Below Cal	#	74
16) Acetone	2.398	43	1001	0.950	ug/l #	69
20) Methylene Chloride	2.788	84	276	Below Cal	#	68
31) Cyclohexane	5.544	56	3363	0.902	ug/l #	39
36) 1,1-Dichloropropene	5.556	75	13876	4.078	ug/l #	50
38) Carbon Tetrachloride	5.562	117	20593	5.830	ug/l #	16
44) Trichloroethene	7.135	130	9646	3.119	ug/l	85
51) 4-Methyl-2-Pentanone	8.647	43	1356	0.456	ug/l #	1
76) 1,2,3-Trichloropropane	11.079	75	68171	22.571	ug/l #	38
81) trans-1,4-Dichloro-2-b...	11.079	75	68171	70.934	ug/l #	13

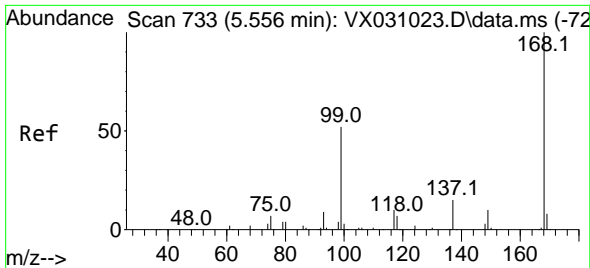
(#) = qualifier out of range (m) = manual integration (+) = signals summed

Data Path : Z:\voasrv\HPCHEM1\MSVOA_X\Data\VX090322\
 Data File : VX031100.D
 Acq On : 03 Sep 2022 22:08
 Operator : JC/MD
 Sample : N4357-20
 Misc : 5.0mL/MSVOA_X/WATER
 ALS Vial : 21 Sample Multiplier: 1

Instrument :
 MSVOA_X
 ClientSampleId :
 DUP10-20220823

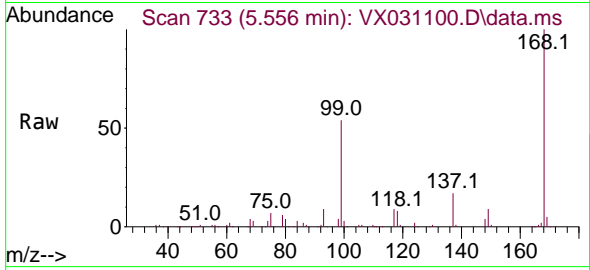
Quant Time: Sep 06 00:18:29 2022
 Quant Method : Z:\voasrv\HPCHEM1\MSVOA_X\Method\82X090122W.M
 Quant Title : SW846 8260
 QLast Update : Fri Sep 02 02:49:21 2022
 Response via : Initial Calibration



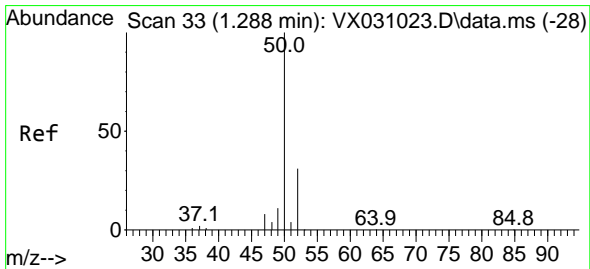
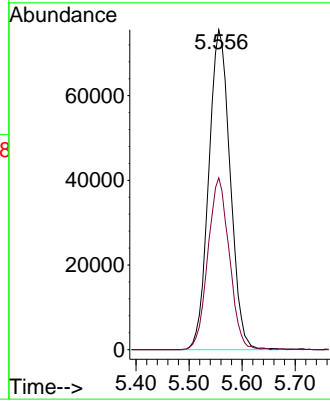
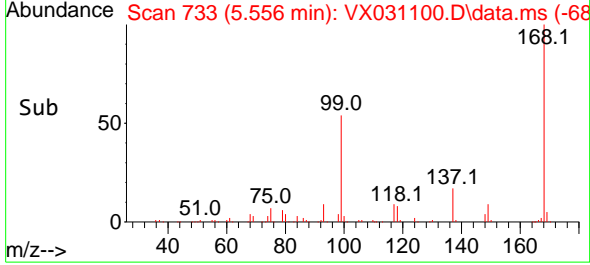


#1
 Pentafluorobenzene
 Concen: 50.000 ug/l
 RT: 5.556 min Scan# 71
 Delta R.T. -0.000 min
 Lab File: VX031100.D
 Acq: 03 Sep 2022 22:08

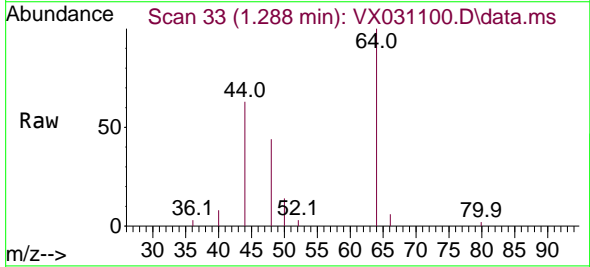
Instrument :
 MSVOA_X
 ClientSampleId :
 DUP10-20220823



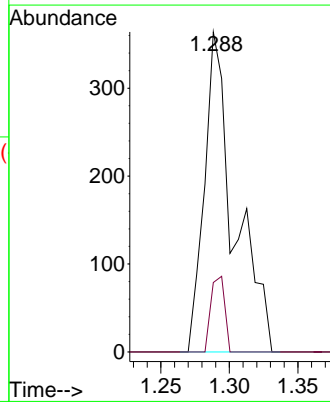
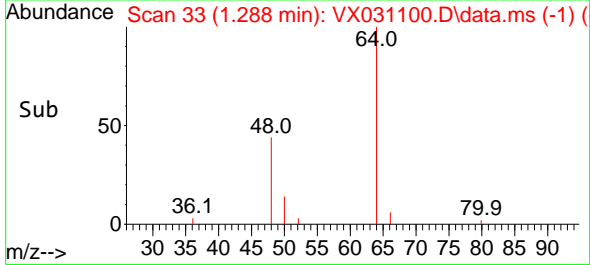
Tgt Ion:168 Resp: 212085
 Ion Ratio Lower Upper
 168 100
 99 53.7 44.0 66.0

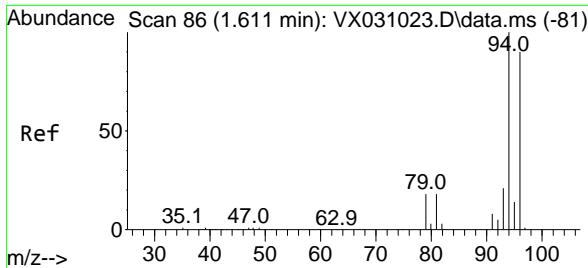


#3
 Chloromethane
 Concen: 0.962 ug/l
 RT: 1.288 min Scan# 33
 Delta R.T. 0.000 min
 Lab File: VX031100.D
 Acq: 03 Sep 2022 22:08



Tgt Ion: 50 Resp: 553
 Ion Ratio Lower Upper
 50 100
 52 21.7 26.3 39.5#

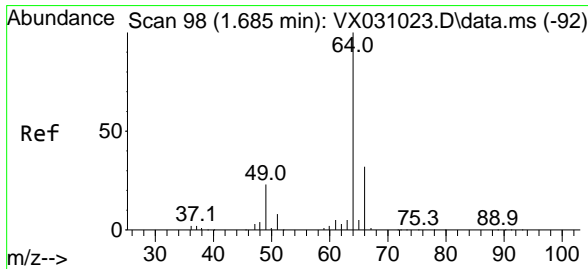
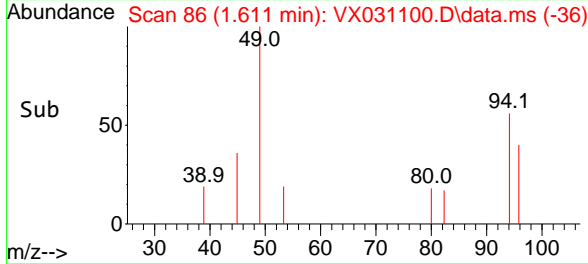
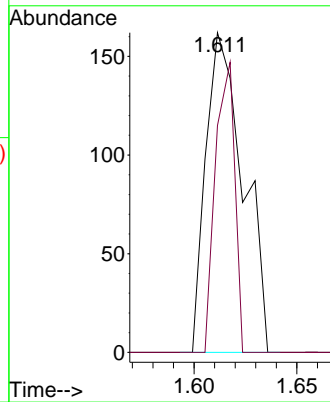
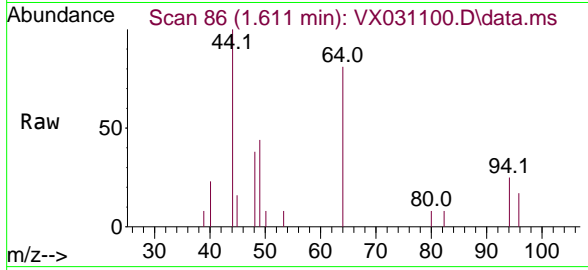




#5
 Bromomethane
 Concen: 0.202 ug/l
 RT: 1.611 min Scan# 80
 Delta R.T. 0.006 min
 Lab File: VX031100.D
 Acq: 03 Sep 2022 22:08

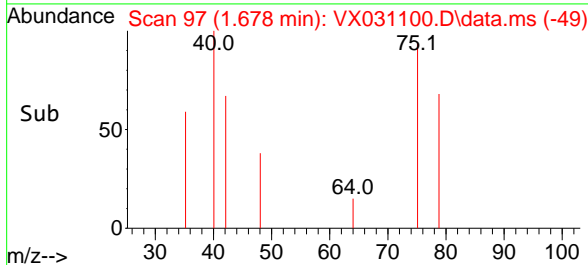
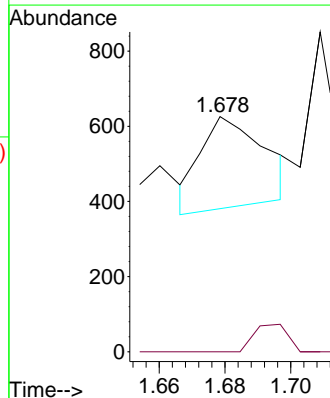
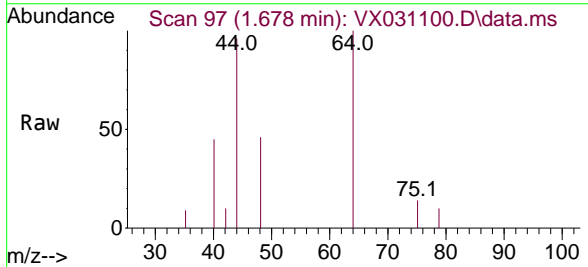
Instrument :
 MSVOA_X
 ClientSampleId :
 DUP10-20220823

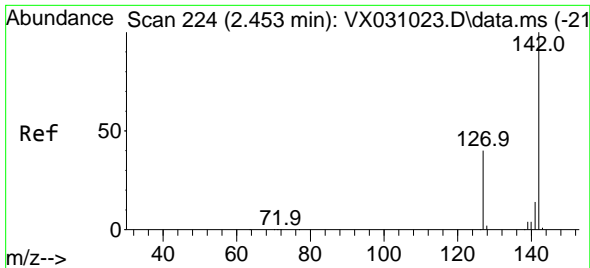
Tgt Ion: 94 Resp: 206
 Ion Ratio Lower Upper
 94 100
 96 71.0 76.9 115.3#



#6
 Chloroethane
 Concen: 1.928 ug/l
 RT: 1.678 min Scan# 97
 Delta R.T. -0.007 min
 Lab File: VX031100.D
 Acq: 03 Sep 2022 22:08

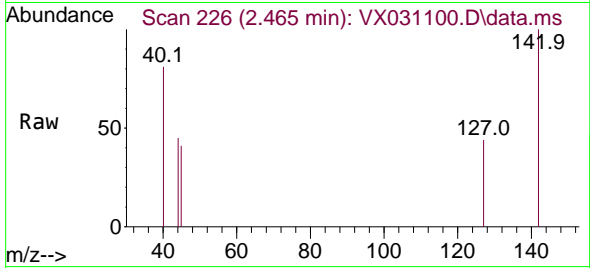
Tgt Ion: 64 Resp: 327
 Ion Ratio Lower Upper
 64 100
 66 0.0 27.2 40.8#



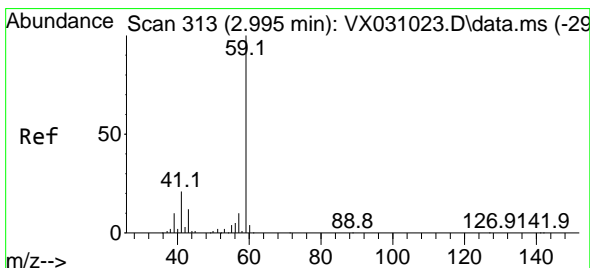
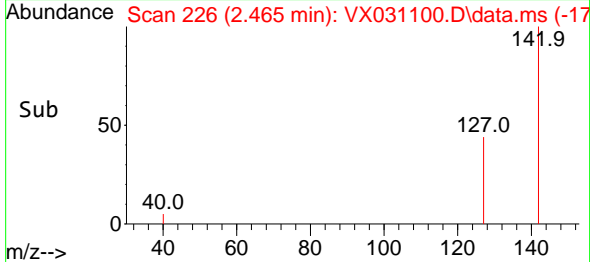
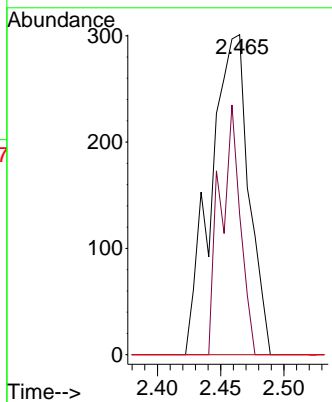


#10
Methyl Iodide
Concen: 3.148 ug/l
RT: 2.465 min Scan# 21
Delta R.T. 0.012 min
Lab File: VX031100.D
Acq: 03 Sep 2022 22:08

Instrument : MSVOA_X
ClientSampleId : DUP10-20220823

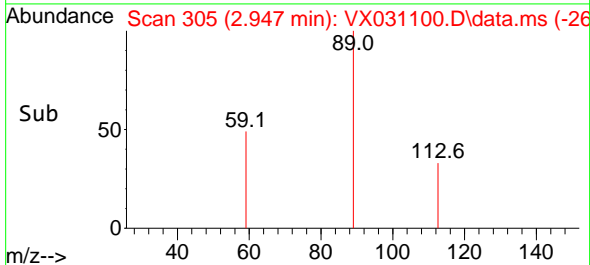
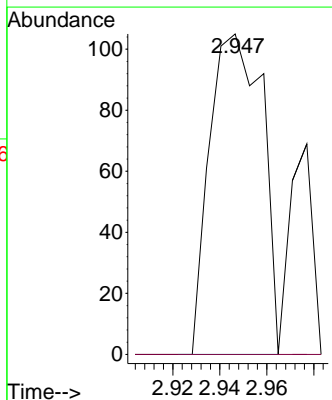
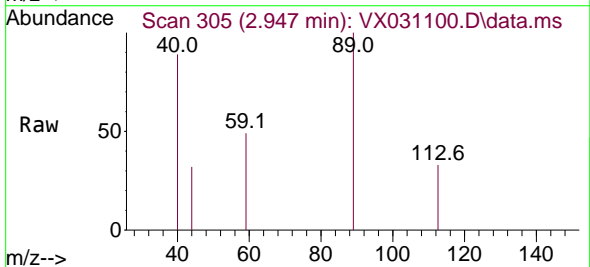


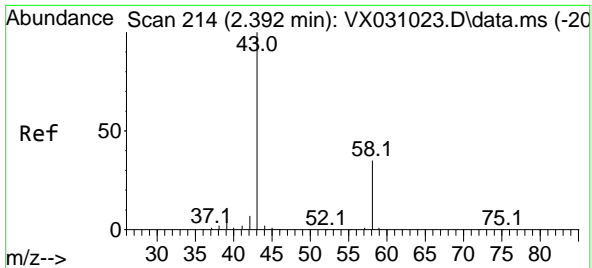
Tgt Ion:142 Resp: 627
Ion Ratio Lower Upper
142 100
127 41.5 30.2 45.2
141 0.0 11.3 16.9#



#11
Tert butyl alcohol
Concen: Below Cal
RT: 2.947 min Scan# 305
Delta R.T. -0.042 min
Lab File: VX031100.D
Acq: 03 Sep 2022 22:08

Tgt Ion: 59 Resp: 163
Ion Ratio Lower Upper
59 100
57 0.0 7.4 11.2#

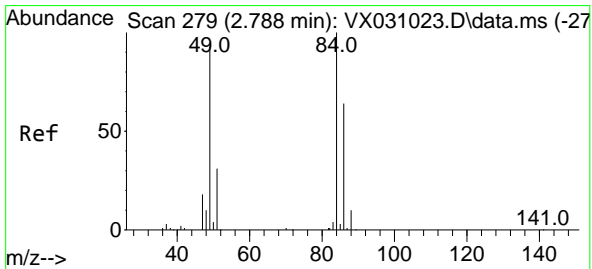
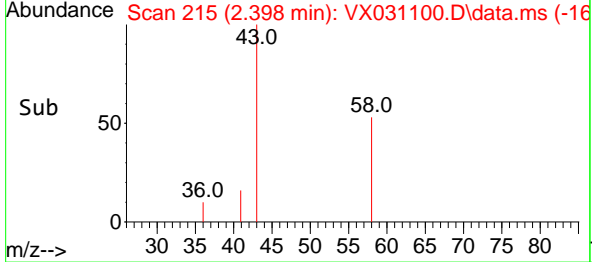
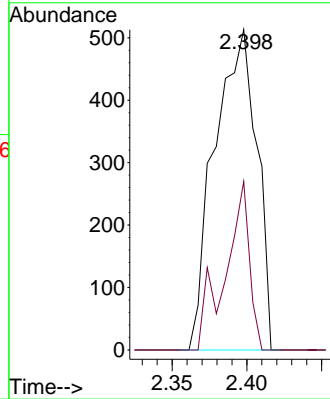
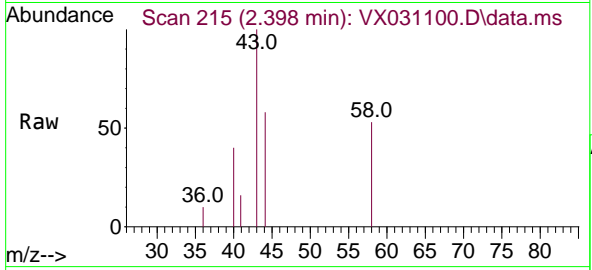




#16
 Acetone
 Concen: 0.950 ug/l
 RT: 2.398 min Scan# 214
 Delta R.T. 0.012 min
 Lab File: VX031100.D
 Acq: 03 Sep 2022 22:08

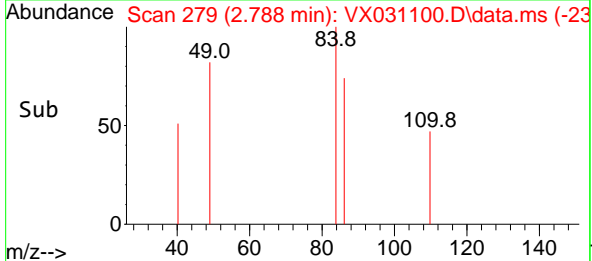
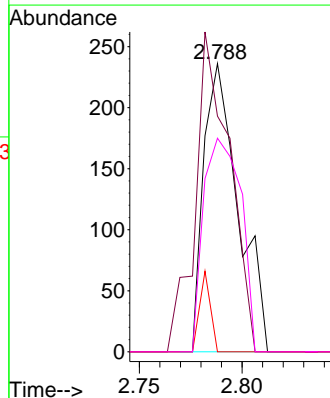
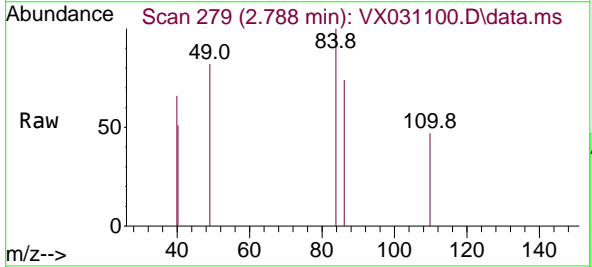
Instrument : MSVOA_X
 ClientSampleId : DUP10-20220823

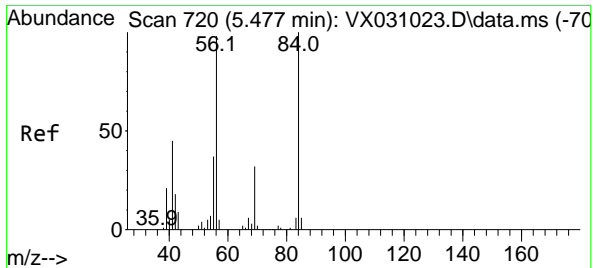
Tgt Ion: 43 Resp: 1001
 Ion Ratio Lower Upper
 43 100
 58 52.6 27.7 41.5#



#20
 Methylene Chloride
 Concen: Below Cal
 RT: 2.788 min Scan# 279
 Delta R.T. 0.000 min
 Lab File: VX031100.D
 Acq: 03 Sep 2022 22:08

Tgt Ion: 84 Resp: 276
 Ion Ratio Lower Upper
 84 100
 49 81.8 93.8 140.6#
 51 0.0 29.4 44.0#
 86 74.2 51.0 76.4

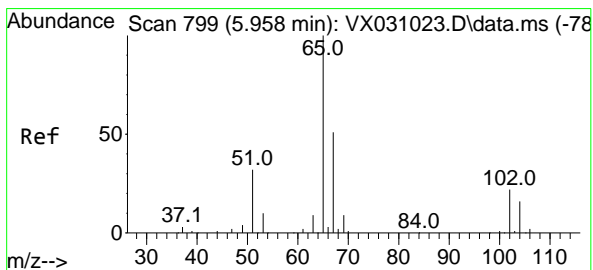
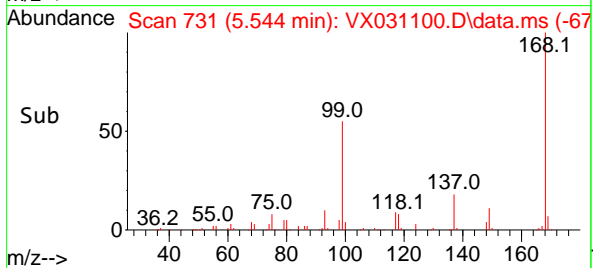
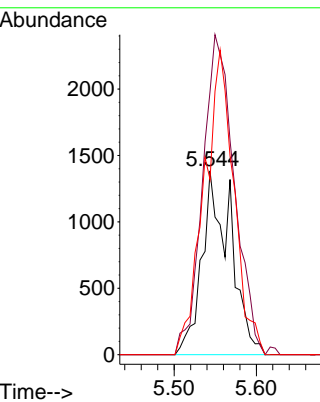
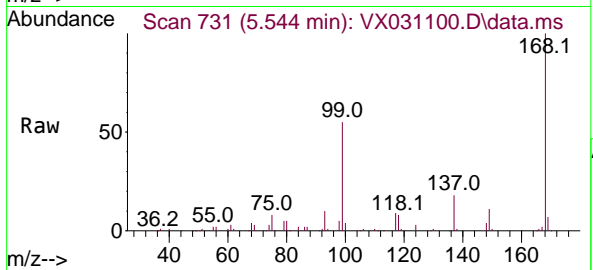




#31
 Cyclohexane
 Concen: 0.902 ug/l
 RT: 5.544 min Scan# 711
 Delta R.T. 0.067 min
 Lab File: VX031100.D
 Acq: 03 Sep 2022 22:08

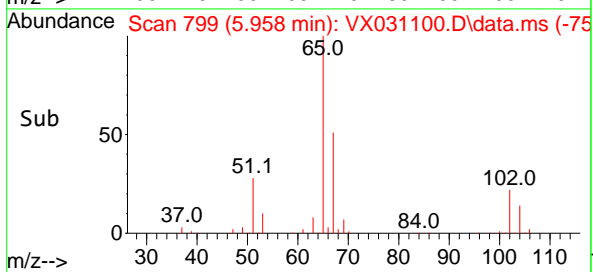
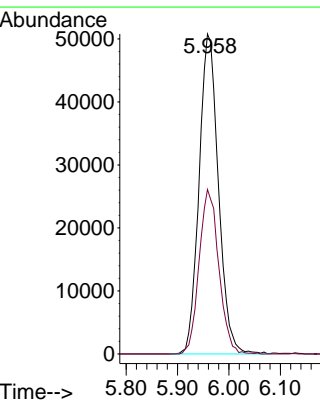
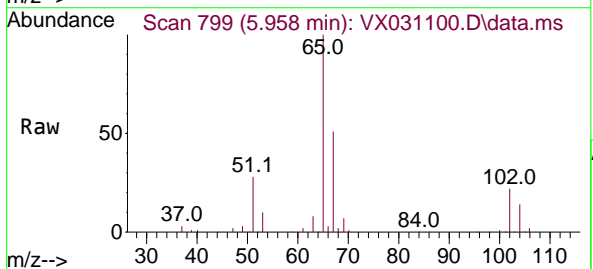
Instrument : MSVOA_X
 ClientSampleId : DUP10-20220823

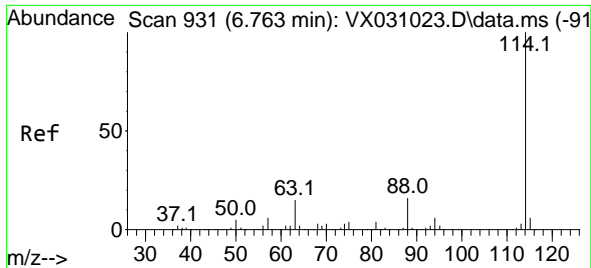
Tgt Ion	Resp	Lower	Upper
56	3363		
69	143.1	25.4	38.0#
84	95.3	68.9	103.3



#33
 1,2-Dichloroethane-d4
 Concen: 48.721 ug/l
 RT: 5.958 min Scan# 799
 Delta R.T. 0.000 min
 Lab File: VX031100.D
 Acq: 03 Sep 2022 22:08

Tgt Ion	Resp	Lower	Upper
65	132955		
67	52.2	0.0	109.6

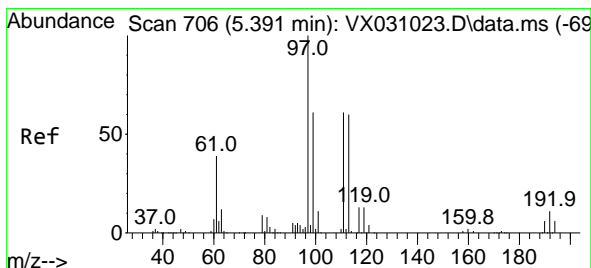
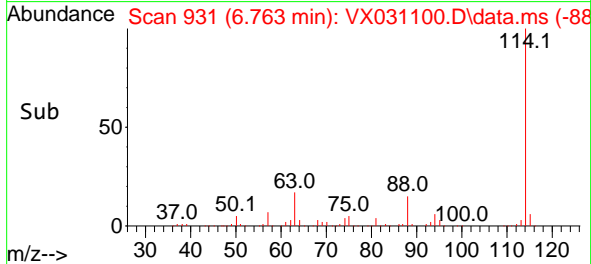
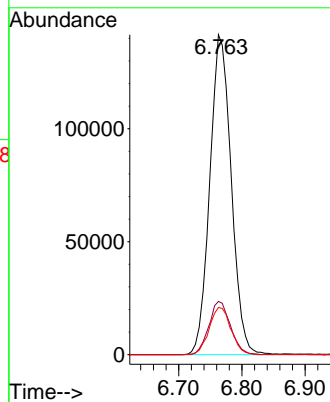
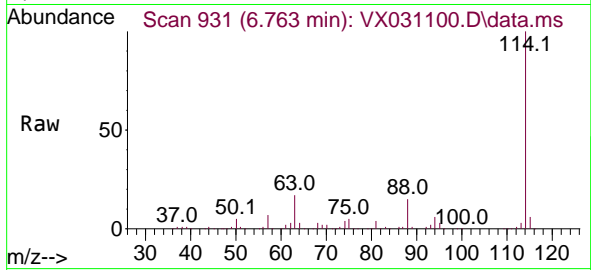




#34
 1,4-Difluorobenzene
 Concen: 50.000 ug/l
 RT: 6.763 min Scan# 91
 Delta R.T. -0.006 min
 Lab File: VX031100.D
 Acq: 03 Sep 2022 22:08

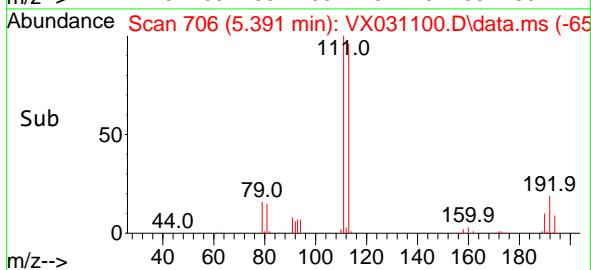
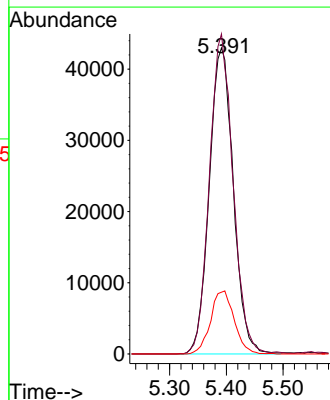
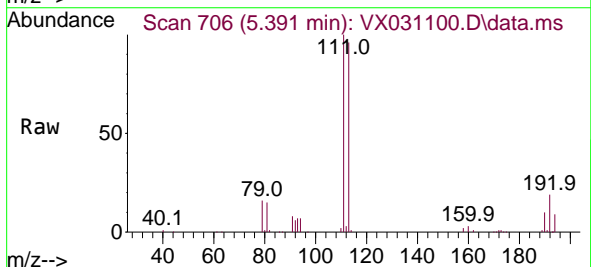
Instrument :
 MSVOA_X
 ClientSampleId :
 DUP10-20220823

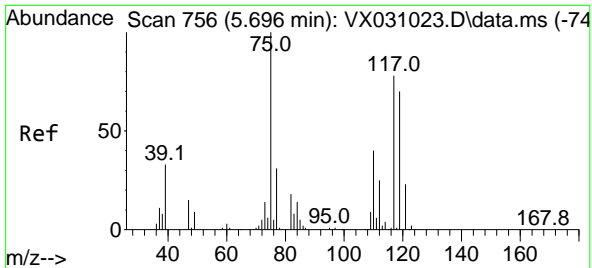
Tgt Ion	Resp	Lower	Upper
114	332900		
63	16.6	0.0	38.4
88	14.8	0.0	31.8



#35
 Dibromofluoromethane
 Concen: 52.012 ug/l
 RT: 5.391 min Scan# 706
 Delta R.T. 0.000 min
 Lab File: VX031100.D
 Acq: 03 Sep 2022 22:08

Tgt Ion	Resp	Lower	Upper
113	126358		
111	102.5	83.2	124.8
192	20.3	14.8	22.2

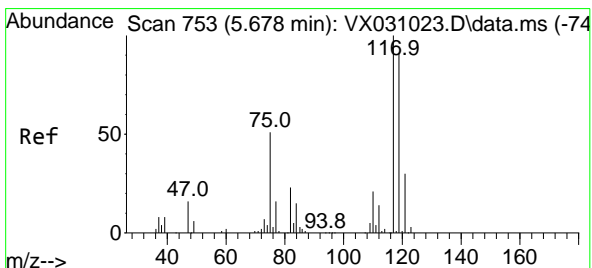
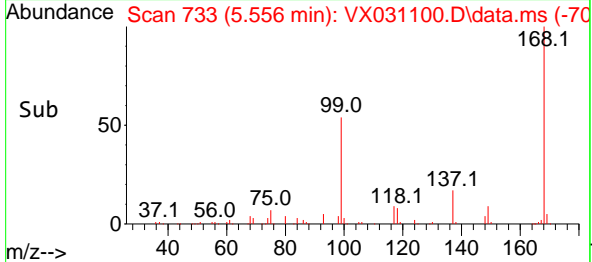
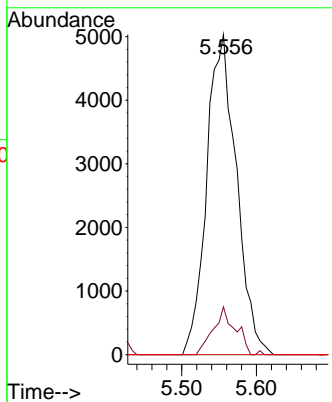
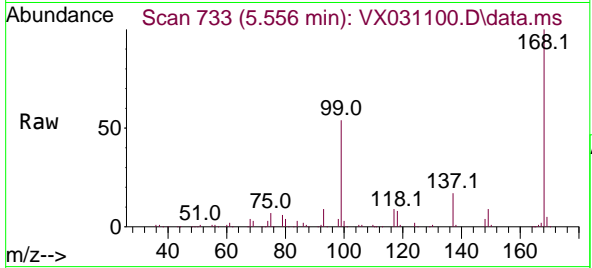




#36
 1,1-Dichloropropene
 Concen: 4.078 ug/l
 RT: 5.556 min Scan# 711
 Delta R.T. -0.140 min
 Lab File: VX031100.D
 Acq: 03 Sep 2022 22:08

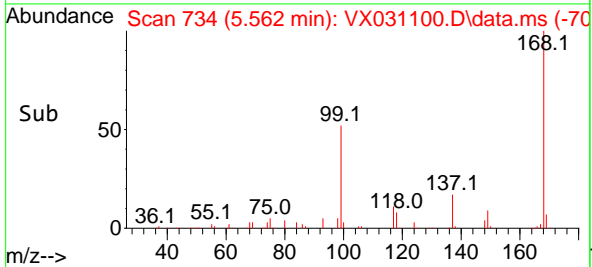
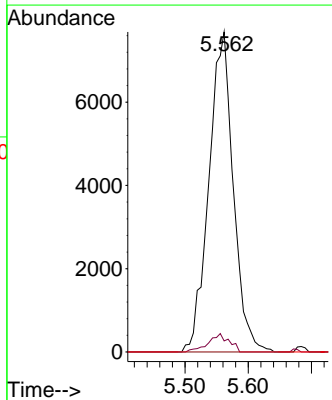
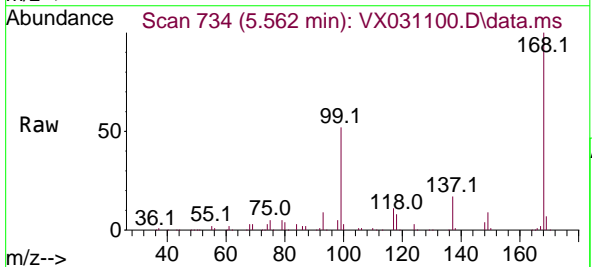
Instrument : MSVOA_X
 ClientSampleId : DUP10-20220823

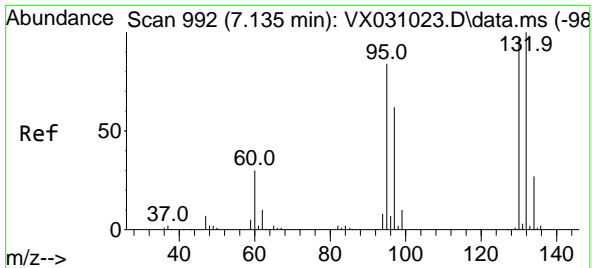
Tgt Ion	Resp	Lower	Upper
75	13876		
110	11.0	19.3	57.9#
77	0.0	24.4	36.6#



#38
 Carbon Tetrachloride
 Concen: 5.830 ug/l
 RT: 5.562 min Scan# 734
 Delta R.T. -0.122 min
 Lab File: VX031100.D
 Acq: 03 Sep 2022 22:08

Tgt Ion	Resp	Lower	Upper
117	20593		
119	3.5	74.1	111.1#
121	0.0	25.8	38.8#

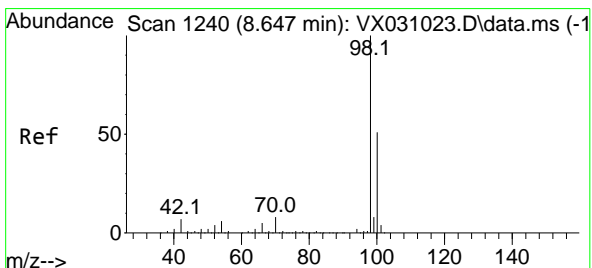
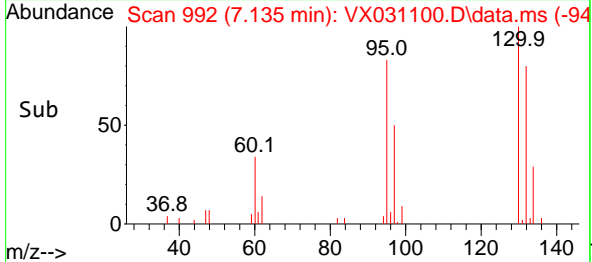
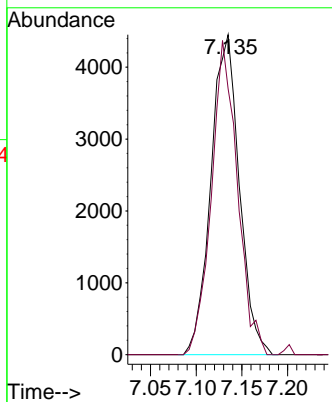
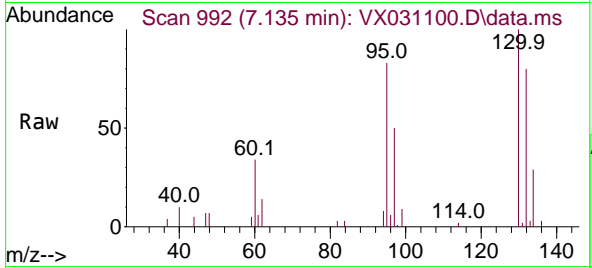




#44
 Trichloroethene
 Concen: 3.119 ug/l
 RT: 7.135 min Scan# 992
 Delta R.T. 0.006 min
 Lab File: VX031100.D
 Acq: 03 Sep 2022 22:08

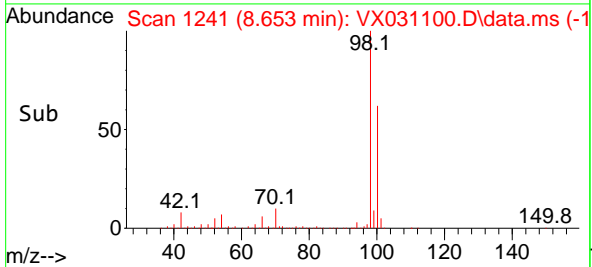
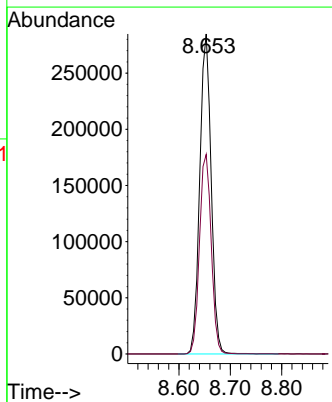
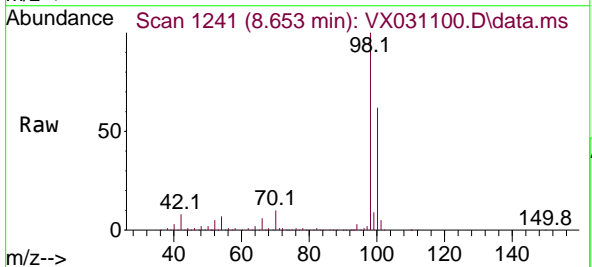
Instrument : MSVOA_X
 ClientSampleId : DUP10-20220823

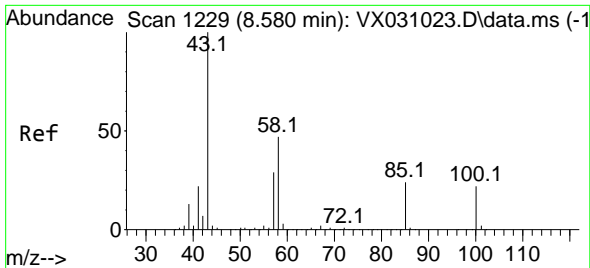
Tgt Ion:130 Resp: 9646
 Ion Ratio Lower Upper
 130 100
 95 83.1 0.0 194.8



#50
 Toluene-d8
 Concen: 48.969 ug/l
 RT: 8.653 min Scan# 1241
 Delta R.T. -0.000 min
 Lab File: VX031100.D
 Acq: 03 Sep 2022 22:08

Tgt Ion: 98 Resp: 437834
 Ion Ratio Lower Upper
 98 100
 100 64.0 52.3 78.5

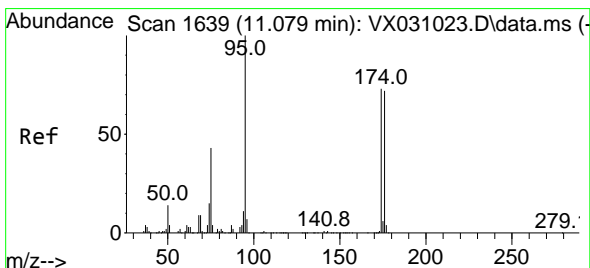
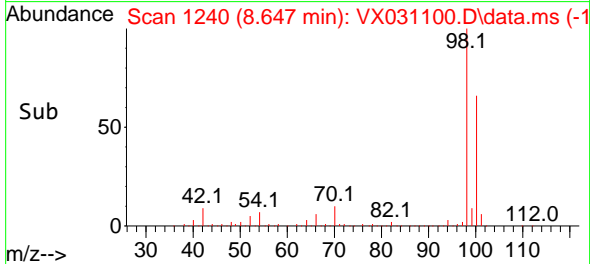
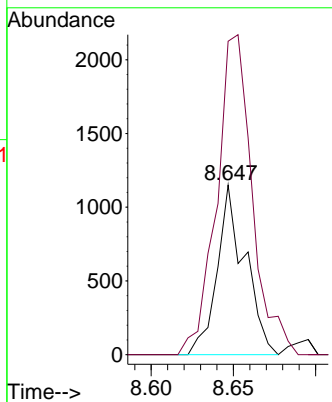
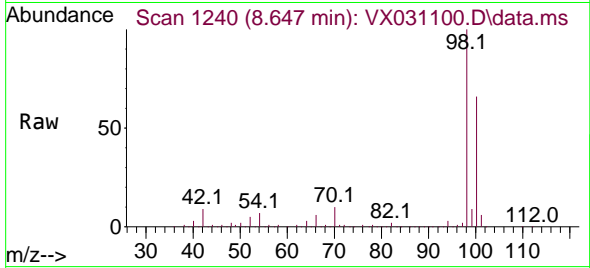




#51
 4-Methyl-2-Pentanone
 Concen: 0.456 ug/l
 RT: 8.647 min Scan# 1110
 Delta R.T. 0.067 min
 Lab File: VX031100.D
 Acq: 03 Sep 2022 22:08

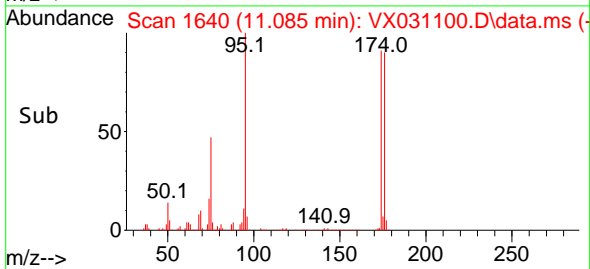
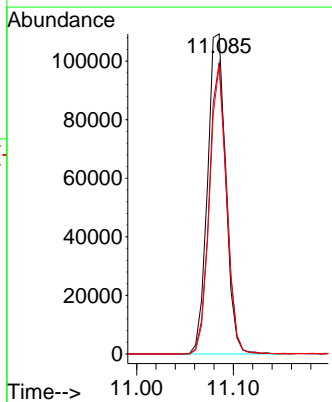
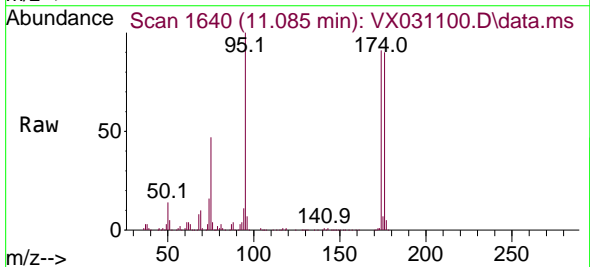
Instrument :
 MSVOA_X
 ClientSampleId :
 DUP10-20220823

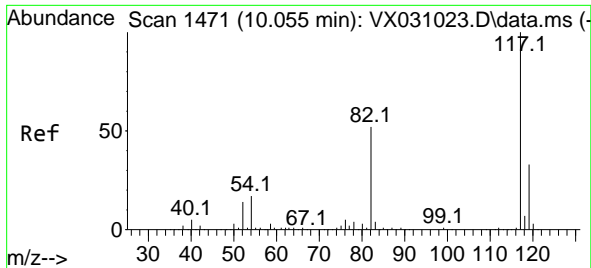
Tgt Ion: 43 Resp: 1356
 Ion Ratio Lower Upper
 43 100
 58 241.0 31.4 47.2#



#62
 4-Bromofluorobenzene
 Concen: 45.321 ug/l
 RT: 11.085 min Scan# 1640
 Delta R.T. 0.000 min
 Lab File: VX031100.D
 Acq: 03 Sep 2022 22:08

Tgt Ion: 95 Resp: 143120
 Ion Ratio Lower Upper
 95 100
 174 87.8 0.0 149.0
 176 84.5 0.0 146.0



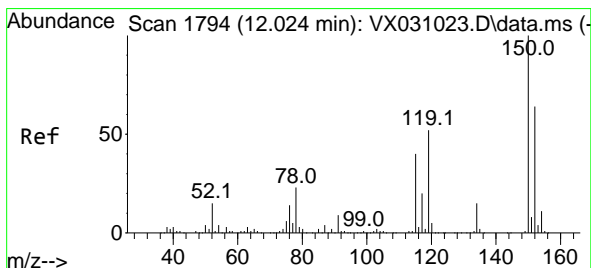
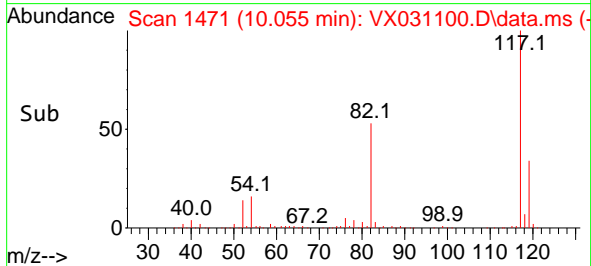
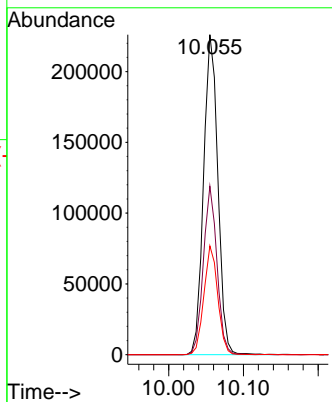
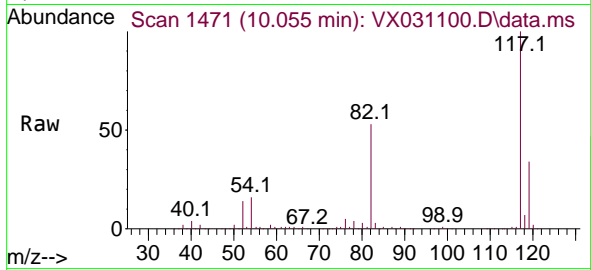


#63
 Chlorobenzene-d5
 Concen: 50.000 ug/l
 RT: 10.055 min Scan# 1471
 Delta R.T. 0.000 min
 Lab File: VX031100.D
 Acq: 03 Sep 2022 22:08

Instrument : MSVOA_X
 ClientSampleId : DUP10-20220823

Tgt Ion:117 Resp: 300102

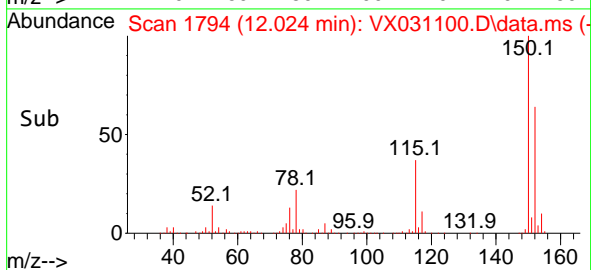
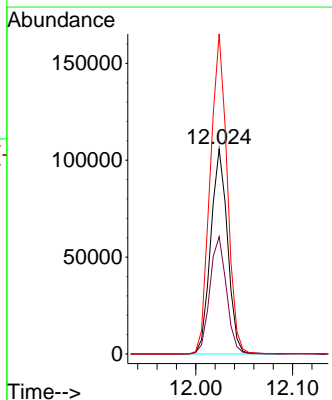
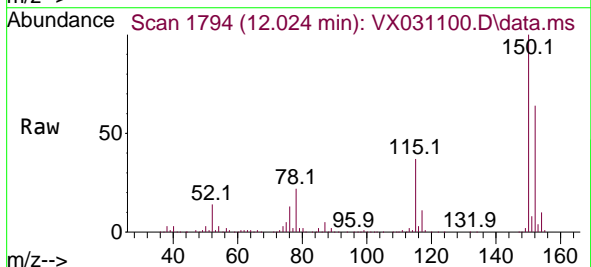
Ion	Ratio	Lower	Upper
117	100		
82	52.6	42.7	64.1
119	34.0	25.4	38.2

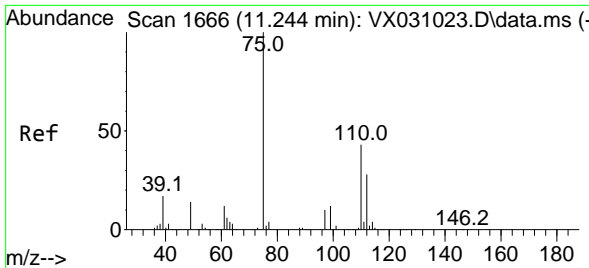


#72
 1,4-Dichlorobenzene-d4
 Concen: 50.000 ug/l
 RT: 12.024 min Scan# 1794
 Delta R.T. 0.000 min
 Lab File: VX031100.D
 Acq: 03 Sep 2022 22:08

Tgt Ion:152 Resp: 127768

Ion	Ratio	Lower	Upper
152	100		
115	56.6	40.5	121.5
150	157.7	0.0	347.0

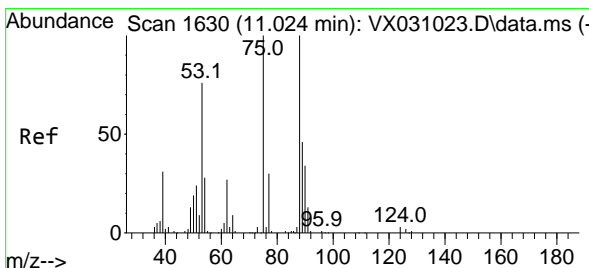
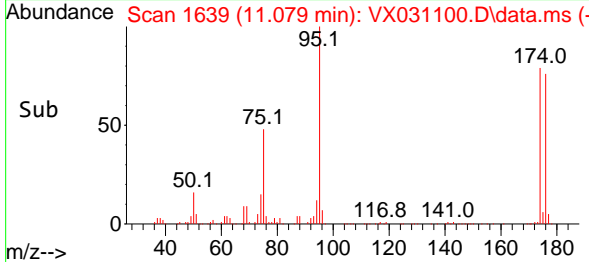
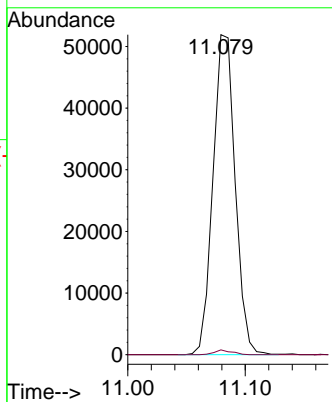
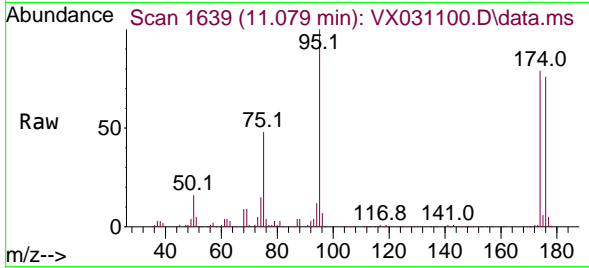




#76
 1,2,3-Trichloropropane
 Concen: 22.571 ug/l
 RT: 11.079 min Scan# 1639
 Delta R.T. -0.165 min
 Lab File: VX031100.D
 Acq: 03 Sep 2022 22:08

Instrument : MSVOA_X
 ClientSampleId : DUP10-20220823

Tgt Ion: 75 Resp: 68171
 Ion Ratio Lower Upper
 75 100
 77 1.1 19.8 59.3#



#81
 trans-1,4-Dichloro-2-butene
 Concen: 70.934 ug/l
 RT: 11.079 min Scan# 1639
 Delta R.T. 0.055 min
 Lab File: VX031100.D
 Acq: 03 Sep 2022 22:08

Tgt Ion: 75 Resp: 68171
 Ion Ratio Lower Upper
 75 100
 53 0.1 74.2 111.4#
 89 0.1 34.8 52.2#

