

Data Path : Z:\voasrv\HPCHEM1\MSVOA_X\Data\VX090623\
 Data File : VX037561.D
 Acq On : 06 Sep 2023 17:53
 Operator : JC/MD
 Sample : 04287-07
 Misc : 5.0mL/MSVOA_X/WATER
 ALS Vial : 20 Sample Multiplier: 1

Instrument :
 MSVOA_X
 ClientSampleId :
 MW-10B-42.5-090123-3V

Integration Parameters: RTEINT.P

Integrator: RTE
 Smoothing : ON Filtering: 5
 Sampling : 1 Min Area: 3 % of largest Peak
 Start Thrs: 0.2 Max Peaks: 100
 Stop Thrs : 0 Peak Location: TOP

If leading or trailing edge < 100 prefer < Baseline drop else tangent >
 Peak separation: 5

Method : Z:\voasrv\HPCHEM1\MSVOA_X\Method\82X081723W.M
 Title : SW846 8260

Signal : TIC: VX037561.D\data.ms

peak #	R.T. min	first scan	max scan	last scan	PK TY	peak height	corr. area	corr. % max.	% of total
1	2.319	195	202	210	rBV	74931	121481	19.96%	3.225%
2	3.093	323	329	337	rBV	5192	9403	1.54%	0.250%
3	3.611	406	414	422	rBV	6800	15012	2.47%	0.399%
4	4.489	547	558	576	rBV	79268	219298	36.03%	5.822%
5	5.391	693	706	721	rBV	69648	203356	33.41%	5.399%
6	5.556	721	733	750	rVB	129173	363462	59.71%	9.650%
7	5.958	790	799	813	rBV2	74472	196819	32.34%	5.225%
8	6.092	815	821	831	rVB4	4932	13135	2.16%	0.349%
9	6.763	921	931	948	rBV	188693	450170	73.96%	11.952%
10	7.129	983	991	1010	rVB	123486	266977	43.86%	7.088%
11	8.647	1234	1240	1252	rBV	376467	608666	100.00%	16.160%
12	10.055	1465	1471	1487	rBV	388022	509944	83.78%	13.539%
13	11.079	1634	1639	1656	rVB	280788	366448	60.21%	9.729%
14	12.024	1788	1794	1806	rBV	337417	422423	69.40%	11.215%

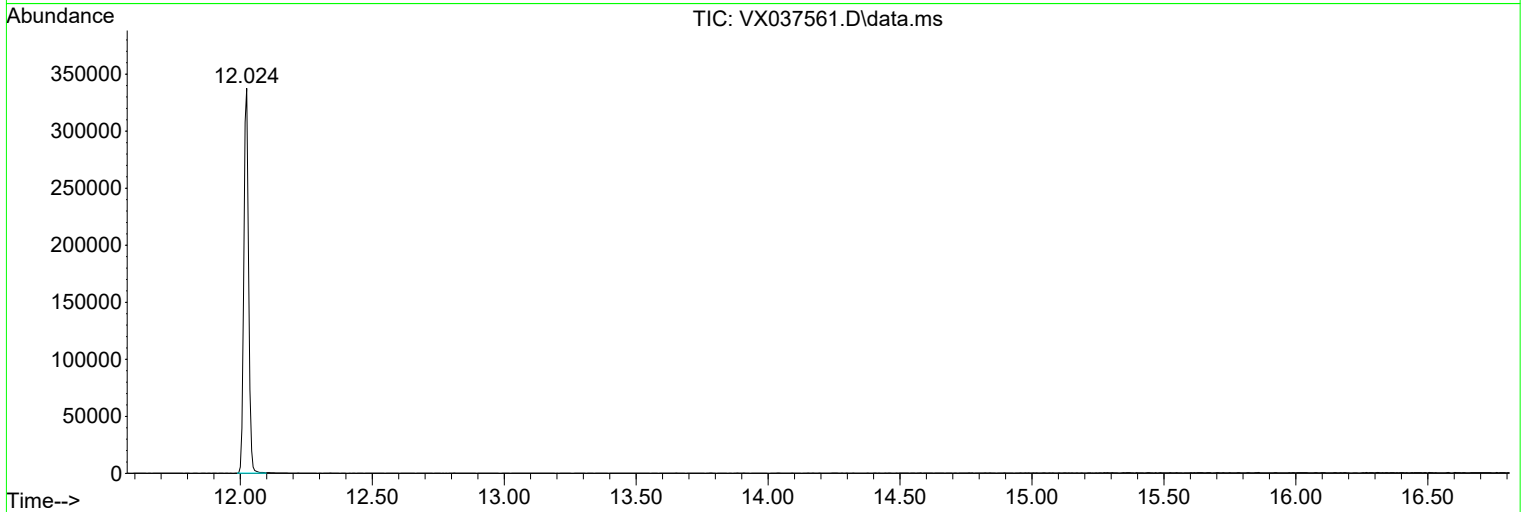
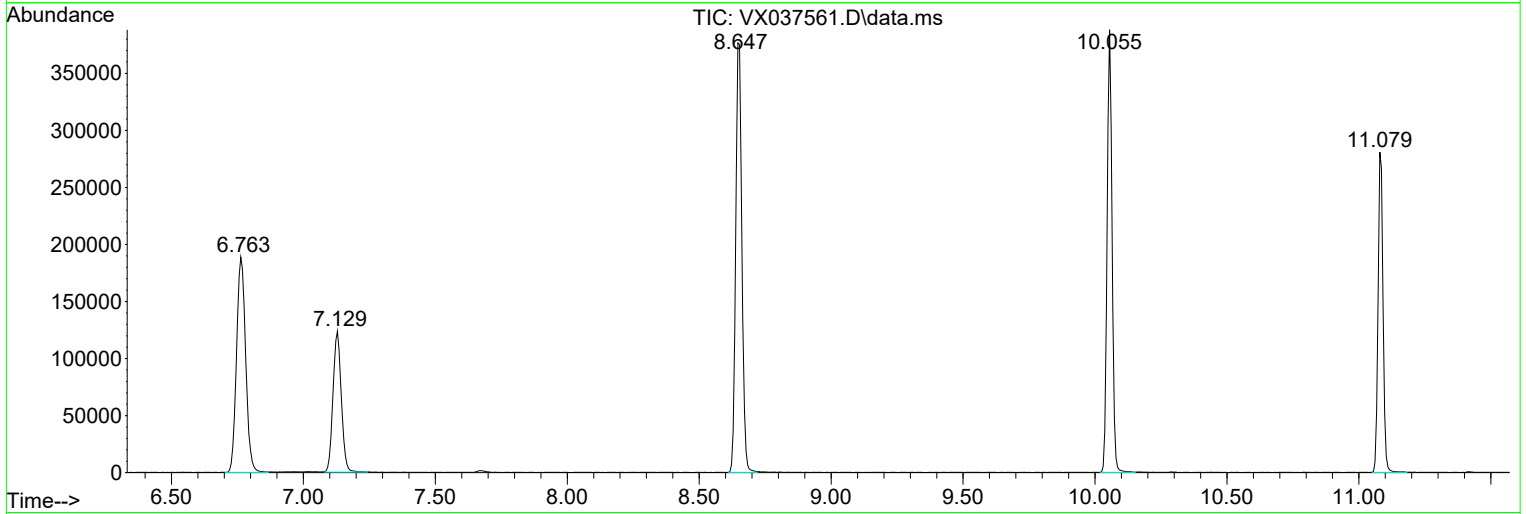
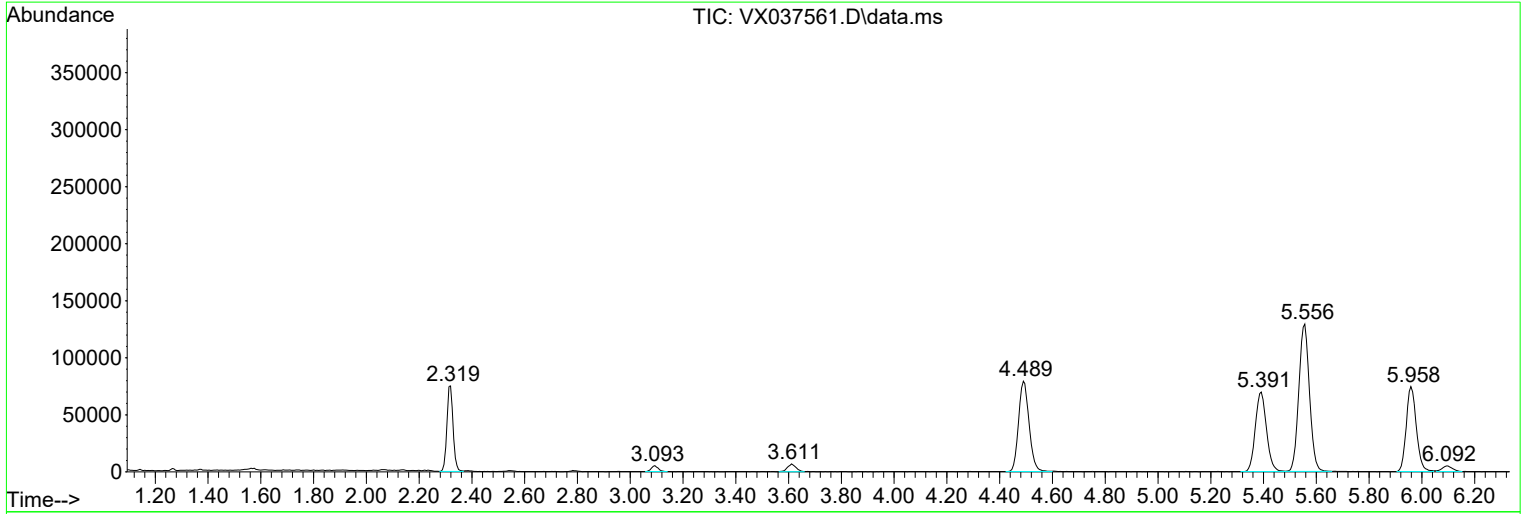
Sum of corrected areas: 3766594

Data Path : Z:\voasrv\HPCHEM1\MSVOA_X\Data\VX090623\
 Data File : VX037561.D
 Acq On : 06 Sep 2023 17:53
 Operator : JC/MD
 Sample : 04287-07
 Misc : 5.0mL/MSVOA_X/WATER
 ALS Vial : 20 Sample Multiplier: 1

Instrument :
 MSVOA_X
ClientSampleId :
 MW-10B-42.5-090123-3V

Quant Method : Z:\voasrv\HPCHEM1\MSVOA_X\Method\82X081723W.M
 Quant Title : SW846 8260

TIC Library : C:\Database\NIST20.L
 TIC Integration Parameters: LSCINT.P



Library Search Compound Report

Data Path : Z:\voasrv\HPCHEM1\MSVOA_X\Data\VX090623\
Data File : VX037561.D
Acq On : 06 Sep 2023 17:53
Operator : JC/MD
Sample : 04287-07
Misc : 5.0mL/MSVOA_X/WATER
ALS Vial : 20 Sample Multiplier: 1

Instrument :
MSVOA_X
ClientSampleId :
MW-10B-42.5-090123-3V

Quant Method : Z:\voasrv\HPCHEM1\MSVOA_X\Method\82X081723W.M
Quant Title : SW846 8260

TIC Library : C:\Database\NIST20.L
TIC Integration Parameters: LSCINT.P

No Library Search Compounds Detected

Data Path : Z:\voasrv\HPCHEM1\MSVOA_X\Data\VX090623\
Data File : VX037561.D
Acq On : 06 Sep 2023 17:53
Operator : JC/MD
Sample : 04287-07
Misc : 5.0mL/MSVOA_X/WATER
ALS Vial : 20 Sample Multiplier: 1

Instrument :
MSVOA_X
ClientSampleId :
MW-10B-42.5-090123-3V

Quant Method : Z:\voasrv\HPCHEM1\MSVOA_X\Method\82X081723W.M
Quant Title : SW846 8260

TIC Library : C:\Database\NIST20.L
TIC Integration Parameters: LSCINT.P

TIC Top Hit name	RT	EstConc	Units	Response	--Internal Standard--			
					#	RT	Resp	Conc
