

Data Path : Z:\VOASRV\HPCHEM1\MSVOA X\DATA\VX090718\
 Data File : VX004415.D
 Acq On : 07 Sep 2018 18:45
 Operator : JC/MD
 Sample : J4812-07
 Misc : 5.0mL/MSVOA X/WATER
 ALS Vial : 16 Sample Multiplier: 1

Instrument :
 MSVOA_X
 ClientSampled :
 MW-8

Quant Time: Sep 08 03:24:14 2018
 Quant Method : Z:\VOASRV\HPCHEM1\MSVOA_X\METHOD\82X082218W.M
 Quant Title : SW846 8260
 QLast Update : Thu Aug 23 05:39:44 2018
 Response via : Initial Calibration

Internal Standards	R.T.	QIon	Response	Conc	Units	Dev(Min)
1) Pentafluorobenzene	5.67	168	334871	50.00	ug/l	0.00
34) 1,4-Difluorobenzene	6.86	114	523562	50.00	ug/l	0.00
63) Chlorobenzene-d5	10.12	117	509045	50.00	ug/l	0.00
72) 1,4-Dichlorobenzene-d4	12.08	152	288154	50.00	ug/l	0.00

System Monitoring Compounds	R.T.	QIon	Response	Conc	Units	Dev(Min)
33) 1,2-Dichloroethane-d4	6.07	65	221059	50.65	ug/l	0.00
Spiked Amount				50.000		
Recovery						= 101.30%
35) Dibromofluoromethane	5.50	113	195935	50.30	ug/l	0.00
Spiked Amount				50.000		
Recovery						= 100.60%
50) Toluene-d8	8.72	98	770304	52.39	ug/l	0.00
Spiked Amount				50.000		
Recovery						= 104.78%
62) 4-Bromofluorobenzene	11.14	95	283402	51.66	ug/l	0.00
Spiked Amount				50.000		
Recovery						= 103.32%

Target Compounds	R.T.	QIon	Response	Conc	Units	Qvalue
3) Chloromethane	1.32	50	743	0.46	ug/l	99
5) Bromomethane	1.66	94	1073	Below Cal	#	62
6) Chloroethane	1.92	64	769	1.19	ug/l #	65
10) Methyl Iodide	2.52	142	511	4.37	ug/l #	82
11) Tert butyl alcohol	3.07	59	1226	1.32	ug/l #	72
13) Acrolein	2.26	56	1672	7.45	ug/l #	1
14) Allyl chloride	2.84	41	49223	7.55	ug/l #	62
15) Acrylonitrile	3.17	53	3447	1.50	ug/l #	42
16) Acetone	2.45	43	13095	Below Cal		95
17) Carbon Disulfide	2.57	76	1746	0.97	ug/l #	92
18) Methyl Acetate	2.84	43	132588	20.47	ug/l #	51
20) Methylene Chloride	2.85	84	1691	0.40	ug/l #	1
25) 2-Butanone	4.71	43	3404	Below Cal	#	73
30) Chloroform	5.27	83	10794	1.52	ug/l #	27
31) Cyclohexane	5.57	56	73073	11.94	ug/l	95
36) 1,1-Dichloropropene	5.66	75	21681	3.68	ug/l #	50
38) Carbon Tetrachloride	5.66	117	28815	5.20	ug/l #	16
39) Methylcyclohexane	7.46	83	45500	6.77	ug/l	89
41) Methacrylonitrile	5.06	41	677	0.20	ug/l #	47
43) Isopropyl Acetate	6.46	43	4119	0.46	ug/l #	60
46) Dibromomethane	7.64	93	626	0.21	ug/l #	1
47) Bromodichloromethane	7.95	83	6529	1.20	ug/l #	25
48) Methyl methacrylate	7.79	41	3049	0.64	ug/l	94
51) 4-Methyl-2-Pentanone	8.71	43	7373	1.14	ug/l #	31
55) 1,1,2-Trichloroethane	9.16	97	11986	2.70	ug/l #	19
56) Ethyl methacrylate	9.16	69	2593	0.43	ug/l #	1
61) 1,2-Dibromoethane	9.71	107	993	0.22	ug/l #	1
68) m/p-Xylenes	10.36	106	2242	0.28	ug/l	89
73) Isopropylbenzene	11.02	105	19436	1.03	ug/l	100
76) 1,2,3-Trichloropropane	11.14	75	131083	22.37	ug/l #	37
78) n-propylbenzene	11.36	91	17600	0.81	ug/l	99
81) trans-1,4-Dichloro-2-buten	11.14	75	131083	72.57	ug/l #	10
85) sec-Butylbenzene	11.94	105	6232	0.33	ug/l	93
90) Hexachloroethane	12.67	117	657	0.28	ug/l #	3

Data Path : Z:\VOASRV\HPCHEM1\MSVOA X\DATA\VX090718\
Data File : VX004415.D
Acq On : 07 Sep 2018 18:45
Operator : JC/MD
Sample : J4812-07
Misc : 5.0mL/MSVOA X/WATER
ALS Vial : 16 Sample Multiplier: 1

Instrument :
MSVOA_X
ClientSampleId :
MW-8

Quant Time: Sep 08 03:24:14 2018
Quant Method : Z:\VOASRV\HPCHEM1\MSVOA_X\METHOD\82X082218W.M
Quant Title : SW846 8260
QLast Update : Thu Aug 23 05:39:44 2018
Response via : Initial Calibration

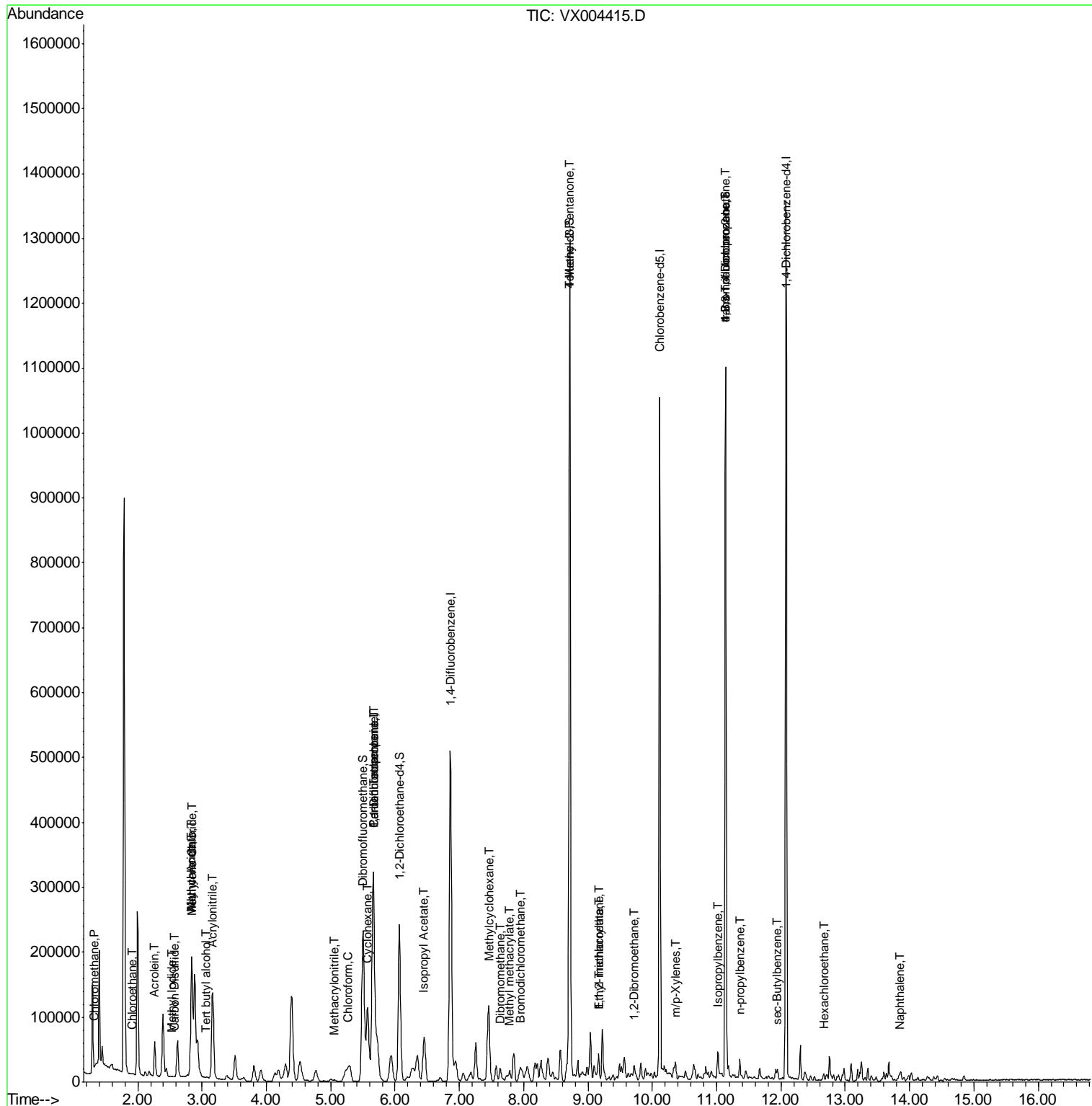
Internal Standards	R.T.	QIon	Response	Conc Units	Dev(Min)
94) Hexachlorobutadiene	13.78	225	162	Below Cal	95
95) Naphthalene	13.83	128	5604	0.30 ug/l #	85

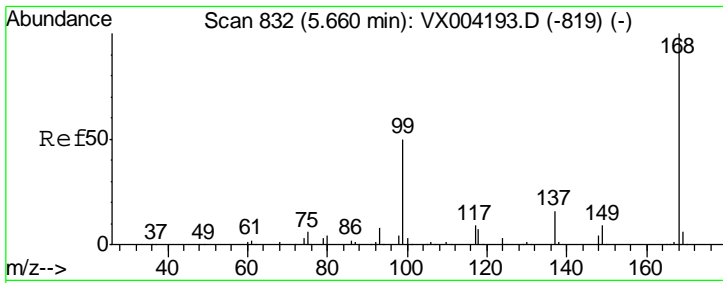
(#) = qualifier out of range (m) = manual integration (+) = signals summed

Data Path : Z:\VOASRV\HPCHEM1\MSVOA X\DATA\VX090718\
 Data File : VX004415.D
 Acq On : 07 Sep 2018 18:45
 Operator : JC/MD
 Sample : J4812-07
 Misc : 5.0mL/MSVOA X/WATER
 ALS Vial : 16 Sample Multiplier: 1

Instrument :
 MSVOA_X
 Client Sampled :
 MW-8

Quant Time: Sep 08 03:24:14 2018
 Quant Method : Z:\VOASRV\HPCHEM1\MSVOA_X\METHOD\82X082218W.M
 Quant Title : SW846 8260
 QLast Update : Thu Aug 23 05:39:44 2018
 Response via : Initial Calibration

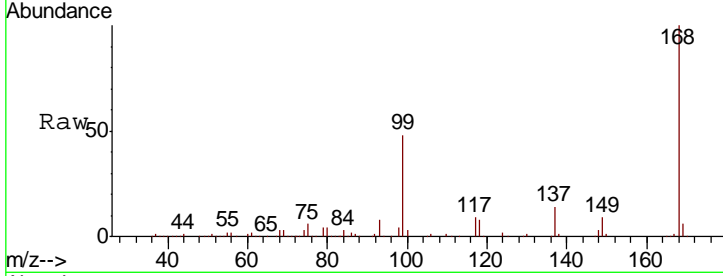




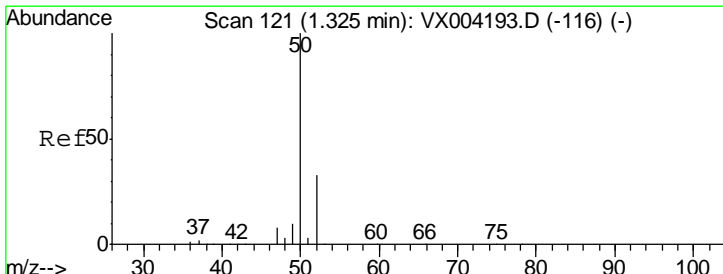
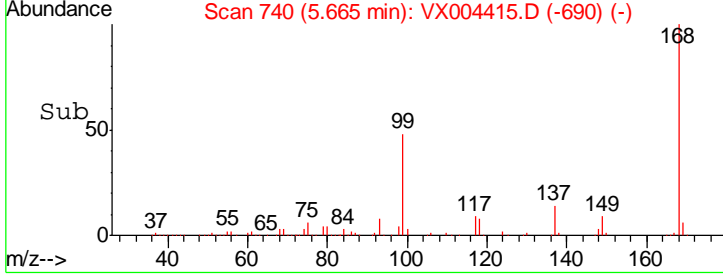
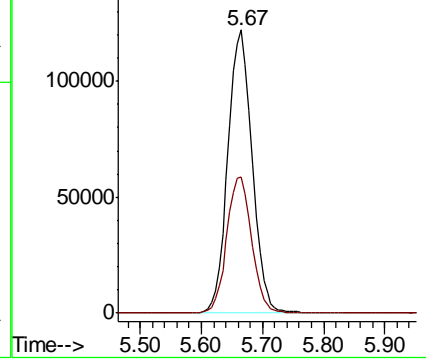
#1
 Pentafluorobenzene
 Concen: 50.00 ug/l
 RT: 5.67 min Scan# 740
 Delta R.T. 0.01 min
 Lab File: VX004415.D
 Acq: 07 Sep 2018 18:45

Instrument :
 MSVOA_X
 ClientSampled :
 MW-8

Tgt Ion	Resp	Lower	Upper
168	100		
99	48.0	39.9	59.9

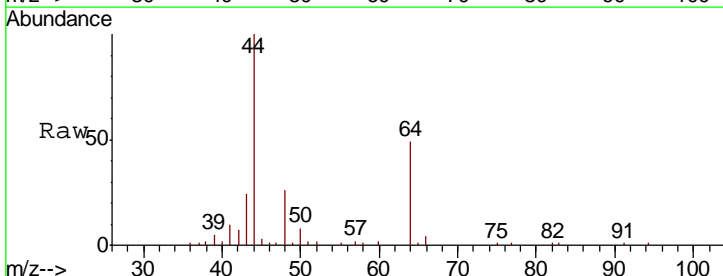


Abundance Ion 167.90 (167.60 to 168.60): VX004415.D (-690) (-)
 Ion 98.90 (98.60 to 99.60): VX004415.D (-690) (-)

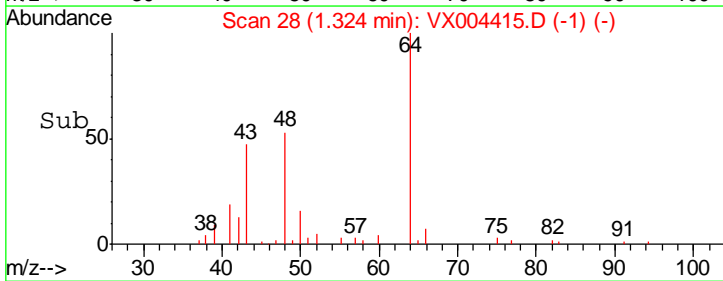
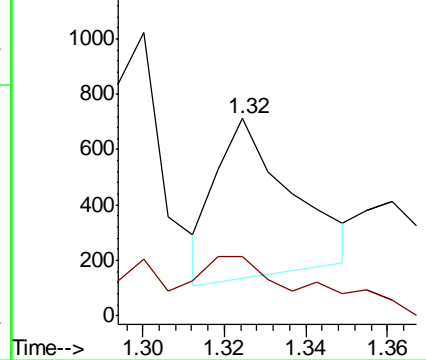


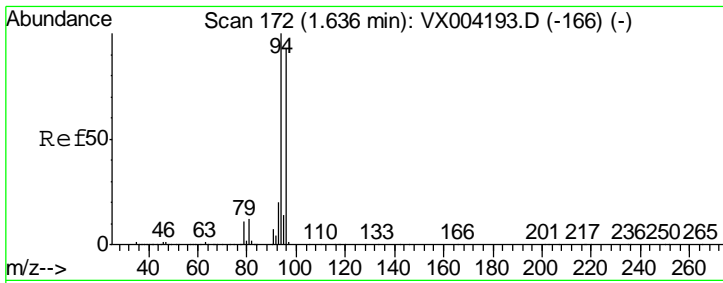
#3
 Chloromethane
 Concen: 0.46 ug/l
 RT: 1.32 min Scan# 28
 Delta R.T. 0.00 min
 Lab File: VX004415.D
 Acq: 07 Sep 2018 18:45

Tgt Ion	Resp	Lower	Upper
50	100		
52	32.1	26.2	39.2



Abundance Ion 49.90 (49.60 to 50.60): VX004415.D (-1) (-)
 Ion 51.90 (51.60 to 52.60): VX004415.D (-1) (-)

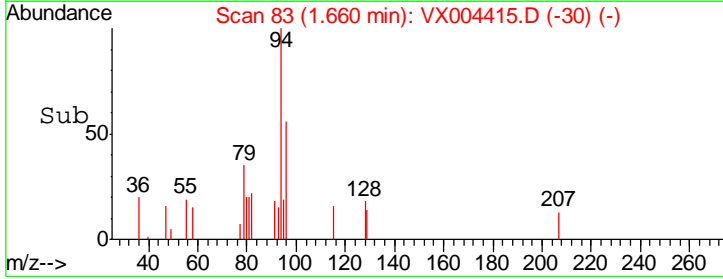
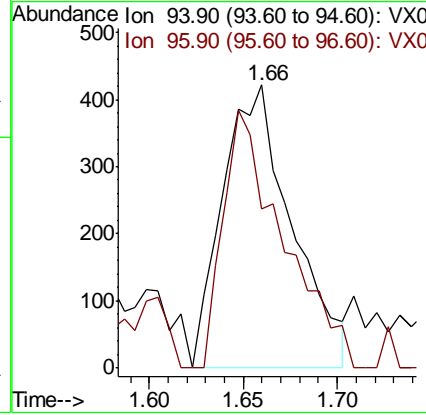
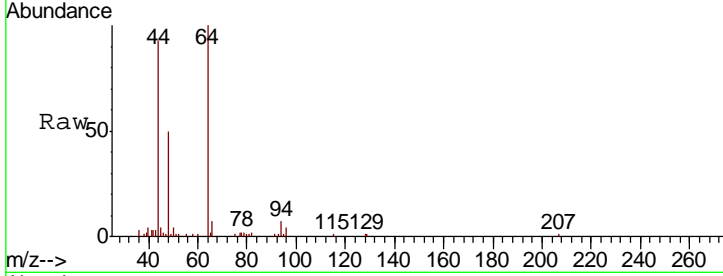




#5
 Bromomethane
 Concen: Below Cal
 RT: 1.66 min Scan# 83
 Delta R.T. 0.02 min
 Lab File: VX004415.D
 Acq: 07 Sep 2018 18:45

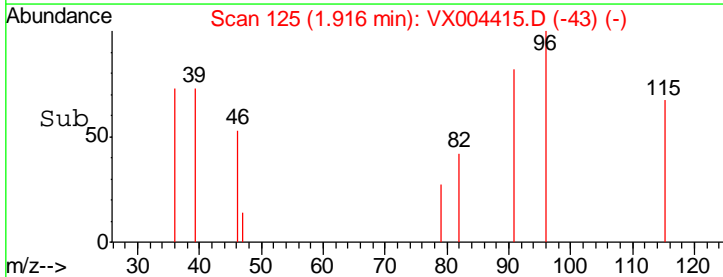
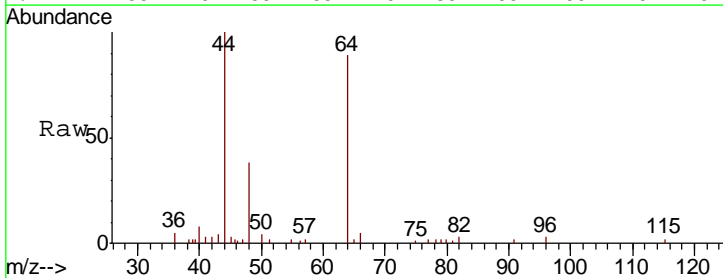
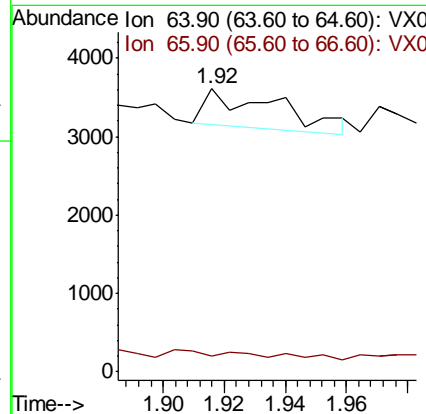
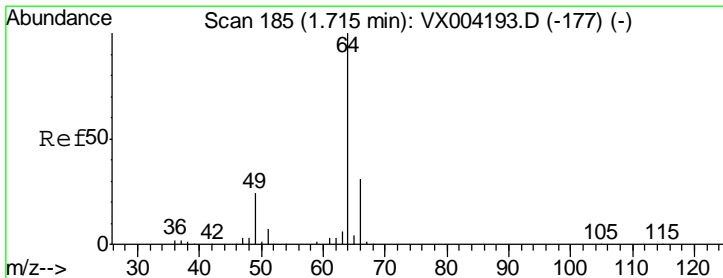
Instrument :
 MSVOA_X
 ClientSampled :
 MW-8

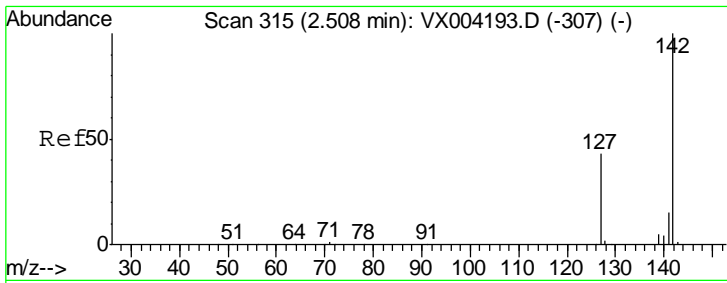
Tgt Ion: 94 Resp: 1073
 Ion Ratio Lower Upper
 94 100
 96 56.2 74.5 111.7#



#6
 Chloroethane
 Concen: 1.19 ug/l
 RT: 1.92 min Scan# 125
 Delta R.T. 0.20 min
 Lab File: VX004415.D
 Acq: 07 Sep 2018 18:45

Tgt Ion: 64 Resp: 769
 Ion Ratio Lower Upper
 64 100
 66 11.7 24.6 36.8#

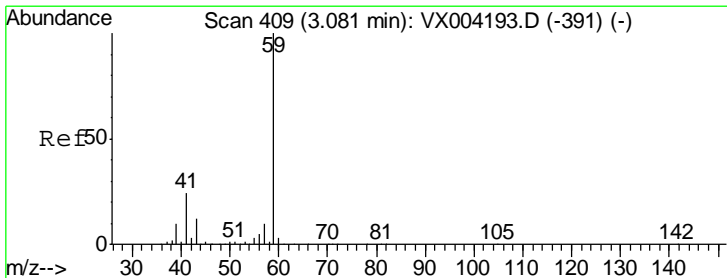
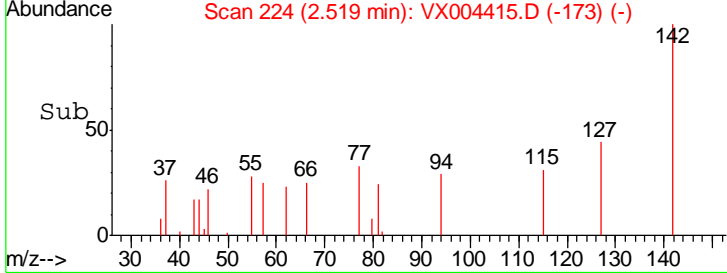
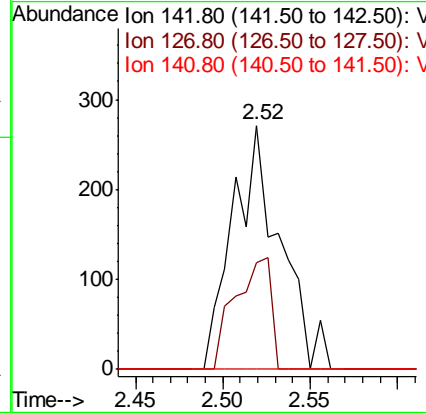
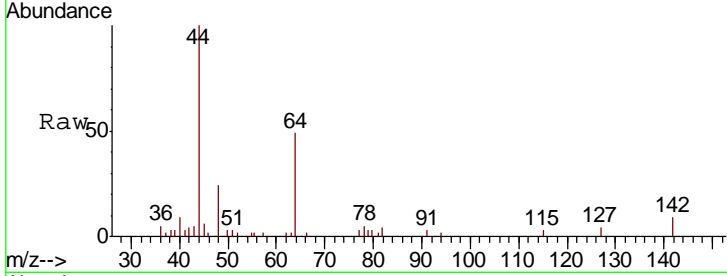




#10
 Methyl Iodide
 Concen: 4.37 ug/l
 RT: 2.52 min Scan# 224
 Delta R.T. 0.01 min
 Lab File: VX004415.D
 Acq: 07 Sep 2018 18:45

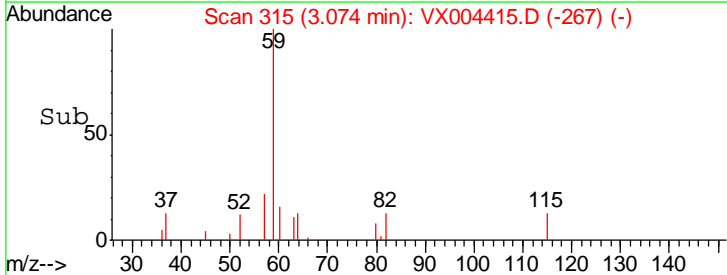
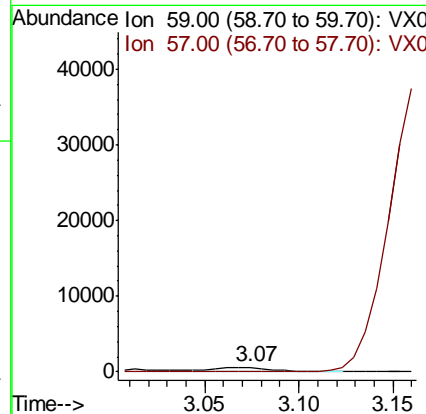
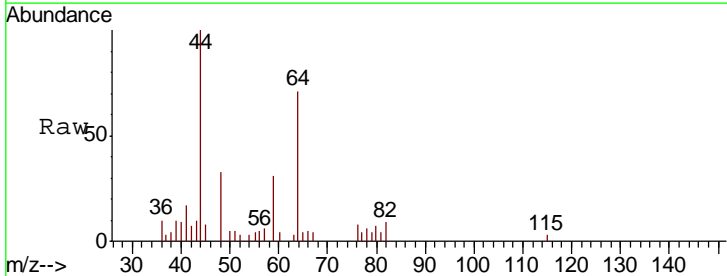
Instrument : MSVOA_X
 ClientSampled : MW-8

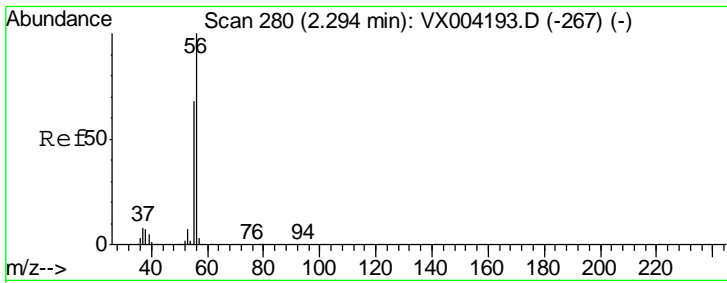
Tgt Ion	Resp	Lower	Upper
142	511		
127	34.4	33.8	50.6
141	0.0	11.4	17.0#



#11
 Tert butyl alcohol
 Concen: 1.32 ug/l
 RT: 3.07 min Scan# 315
 Delta R.T. -0.01 min
 Lab File: VX004415.D
 Acq: 07 Sep 2018 18:45

Tgt Ion	Resp	Lower	Upper
59	1226		
57	0.0	8.2	12.4#

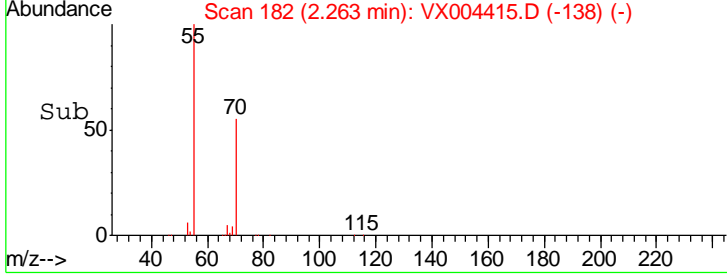
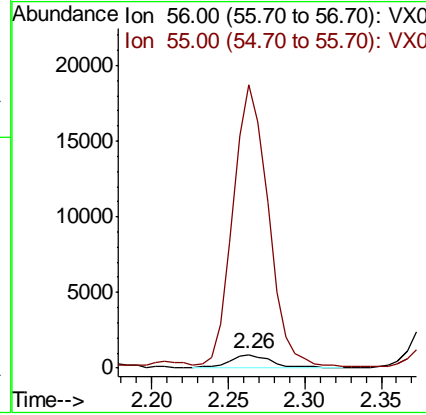
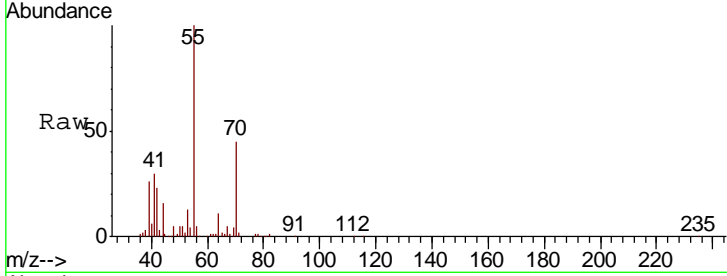




#13
 Acrolein
 Concen: 7.45 ug/l
 RT: 2.26 min Scan# 182
 Delta R.T. -0.03 min
 Lab File: VX004415.D
 Acq: 07 Sep 2018 18:45

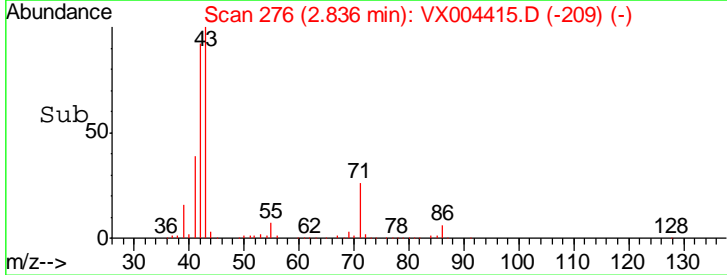
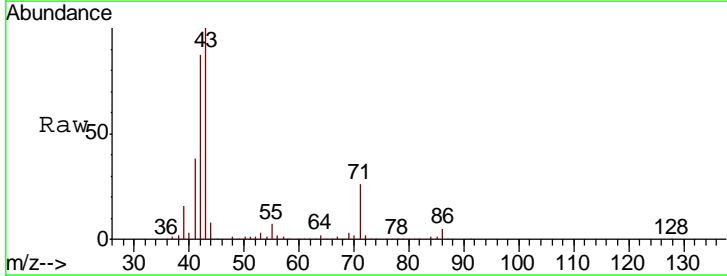
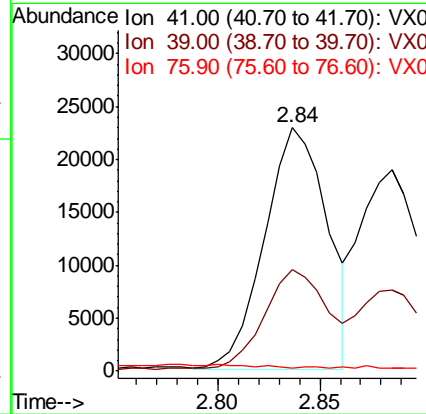
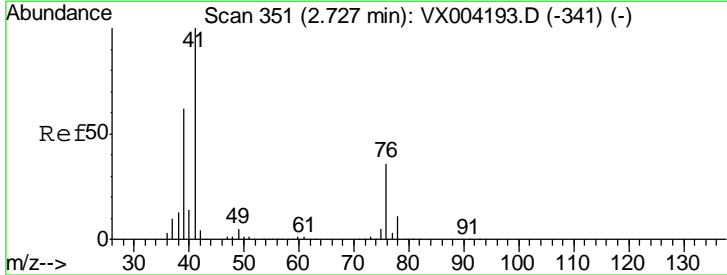
Instrument : MSVOA_X
 ClientSampled : MW-8

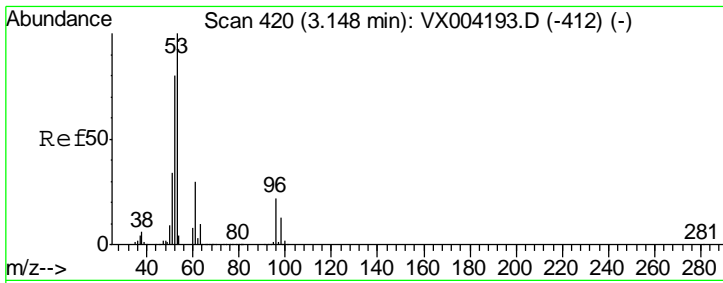
Tgt Ion: 56 Resp: 1672
 Ion Ratio Lower Upper
 56 100
 55 1777.1 54.7 82.1#



#14
 Allyl chloride
 Concen: 7.55 ug/l
 RT: 2.84 min Scan# 276
 Delta R.T. 0.11 min
 Lab File: VX004415.D
 Acq: 07 Sep 2018 18:45

Tgt Ion: 41 Resp: 49223
 Ion Ratio Lower Upper
 41 100
 39 41.2 48.9 73.3#
 76 0.0 26.7 40.1#

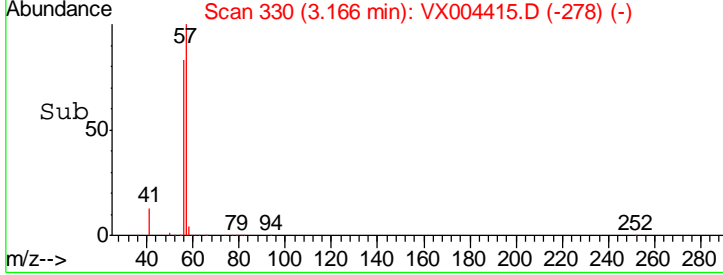
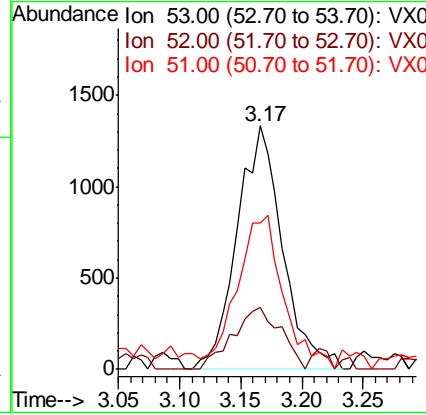
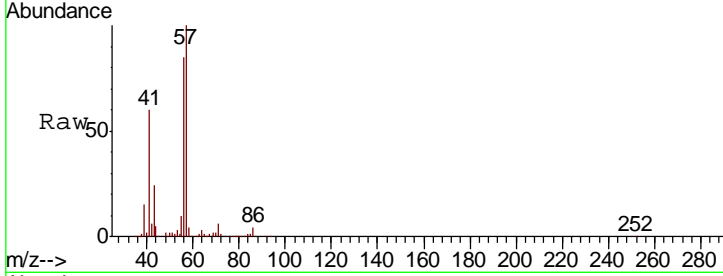




#15
 Acrylonitrile
 Concen: 1.50 ug/l
 RT: 3.17 min Scan# 330
 Delta R.T. 0.02 min
 Lab File: VX004415.D
 Acq: 07 Sep 2018 18:45

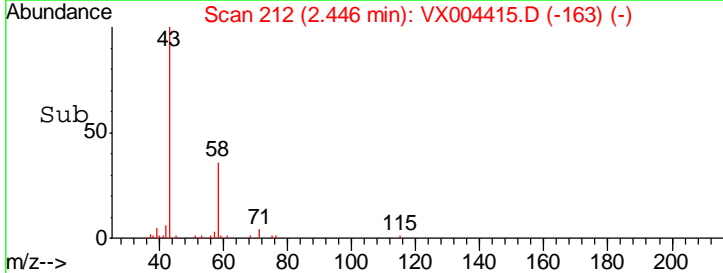
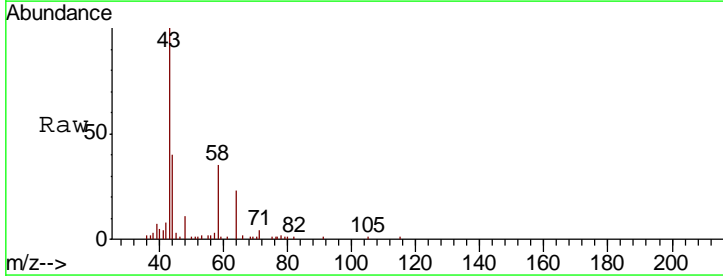
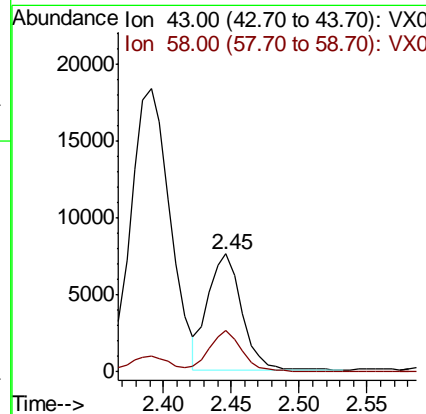
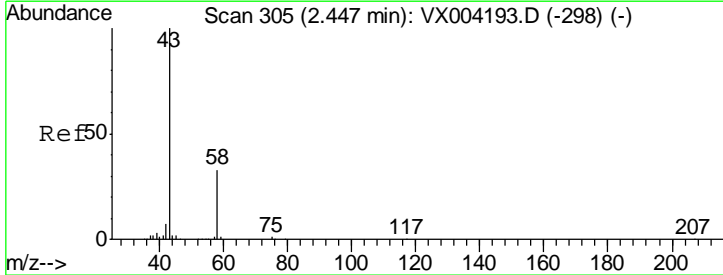
Instrument :
 MSVOA_X
ClientSampled :
 MW-8

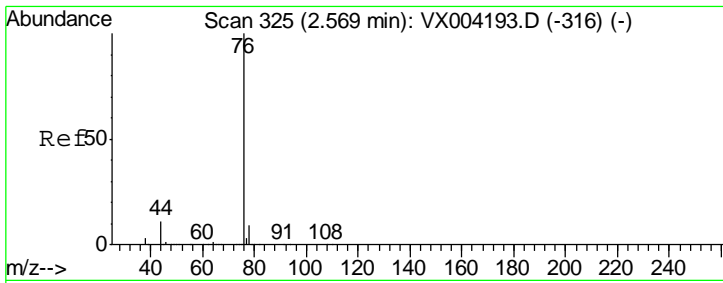
Tgt Ion	Resp	Lower	Upper
53	100		
52	26.6	65.2	97.8#
51	64.5	28.2	42.2#



#16
 Acetone
 Concen: Below Cal
 RT: 2.45 min Scan# 212
 Delta R.T. 0.00 min
 Lab File: VX004415.D
 Acq: 07 Sep 2018 18:45

Tgt Ion	Resp	Lower	Upper
43	100		
58	35.6	26.2	39.4

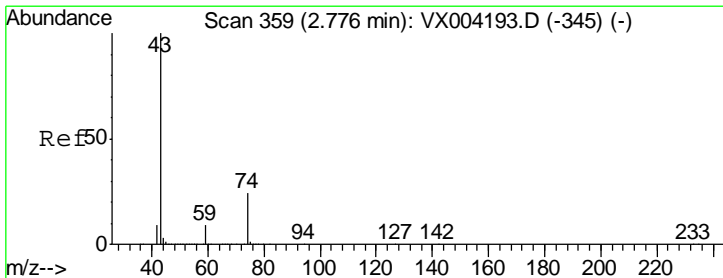
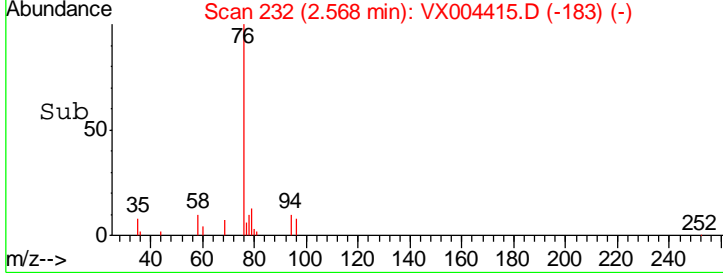
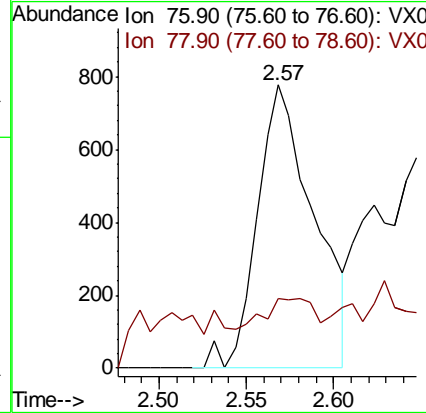
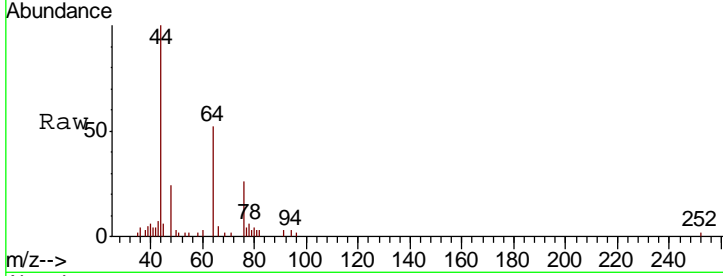




#17
 Carbon Disulfide
 Concen: 0.97 ug/l
 RT: 2.57 min Scan# 232
 Delta R.T. 0.00 min
 Lab File: VX004415.D
 Acq: 07 Sep 2018 18:45

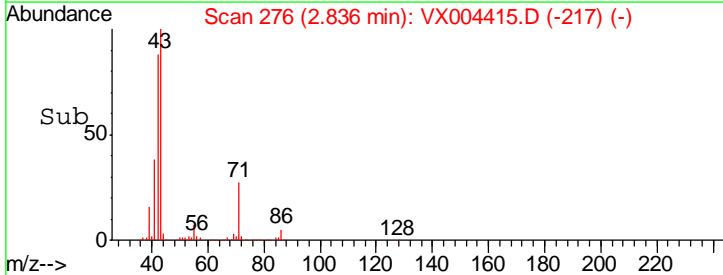
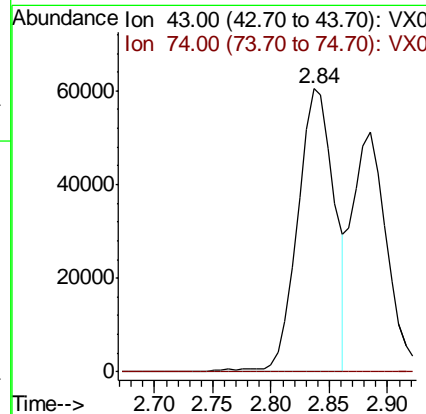
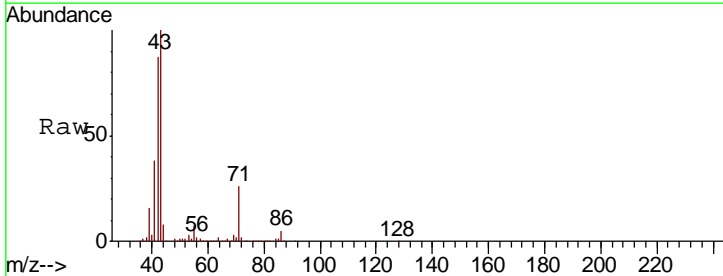
Instrument :
 MSVOA_X
 ClientSampled :
 MW-8

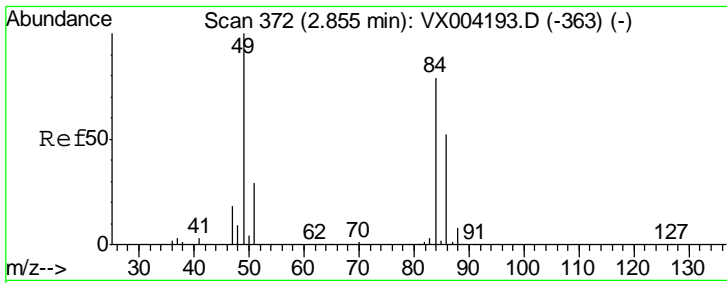
Tgt Ion	Resp	Lower	Upper
76	1746		
78	5.9	7.0	10.6#



#18
 Methyl Acetate
 Concen: 20.47 ug/l
 RT: 2.84 min Scan# 276
 Delta R.T. 0.06 min
 Lab File: VX004415.D
 Acq: 07 Sep 2018 18:45

Tgt Ion	Resp	Lower	Upper
43	132588		
74	0.0	19.4	29.2#

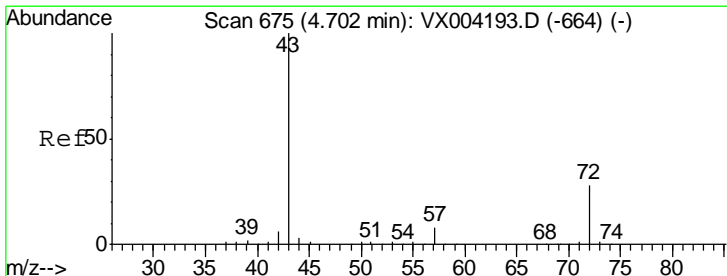
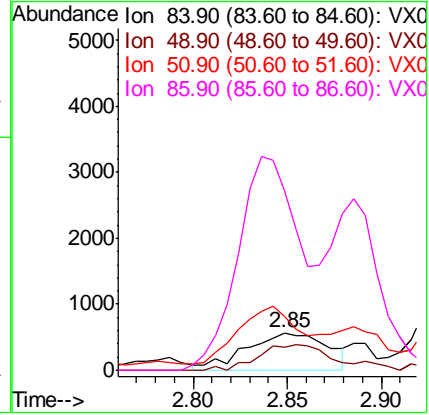
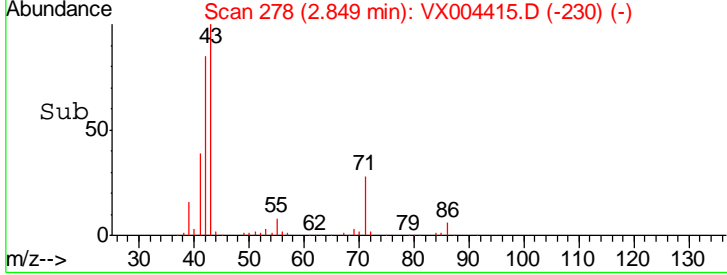
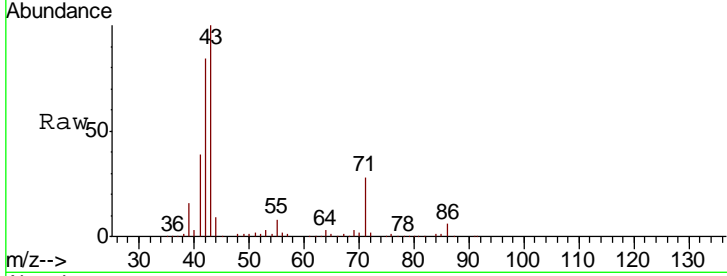




#20
 Methylene Chloride
 Concen: 0.40 ug/l
 RT: 2.85 min Scan# 278
 Delta R.T. -0.01 min
 Lab File: VX004415.D
 Acq: 07 Sep 2018 18:45

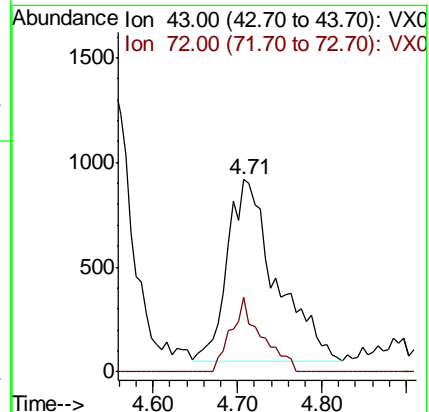
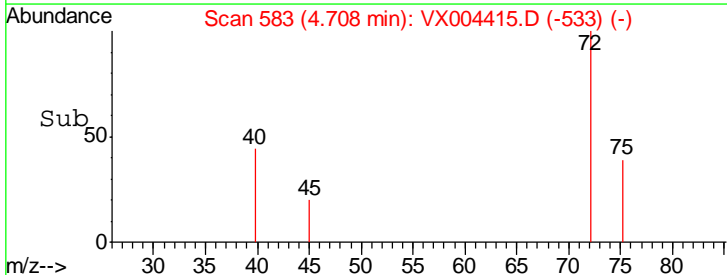
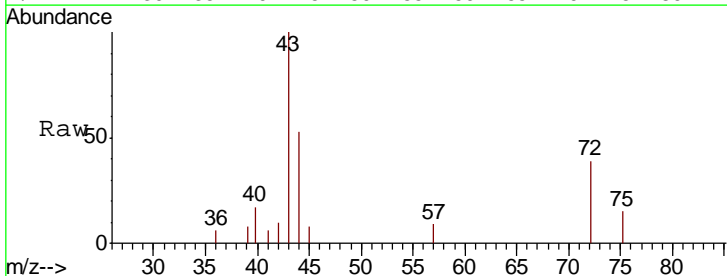
Instrument : MSVOA_X
 ClientSampled : MW-8

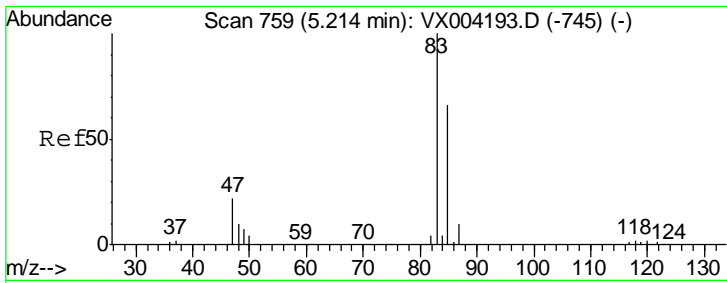
Tgt Ion	Resp	Lower	Upper
84	1691		
49	73.6	101.2	151.8#
51	151.4	29.5	44.3#
86	547.6	52.3	78.5#



#25
 2-Butanone
 Concen: Below Cal
 RT: 4.71 min Scan# 583
 Delta R.T. 0.01 min
 Lab File: VX004415.D
 Acq: 07 Sep 2018 18:45

Tgt Ion	Resp	Lower	Upper
43	3404		
72	41.4	22.0	33.0#

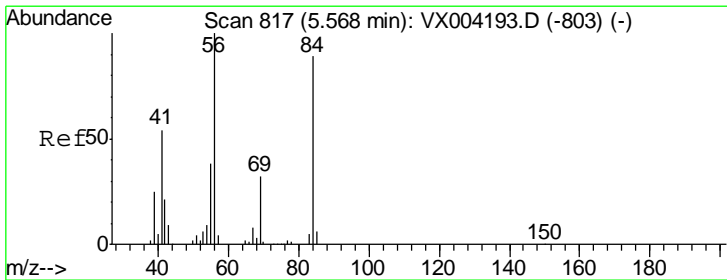
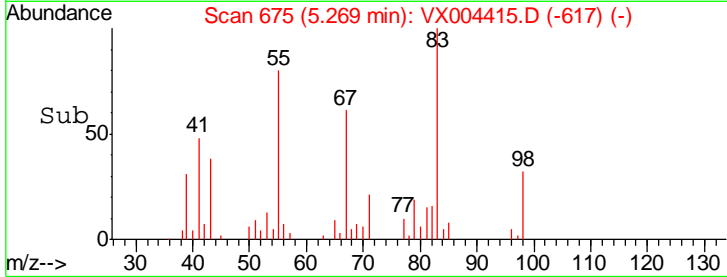
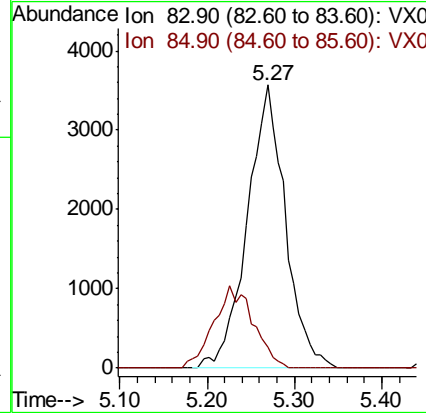
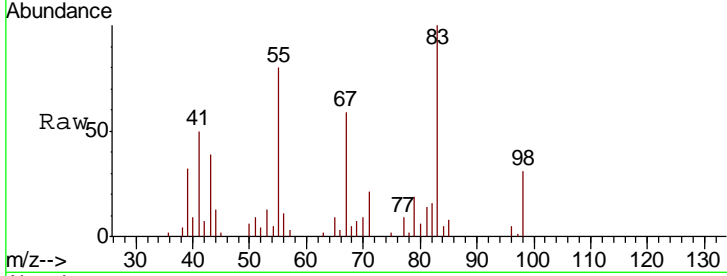




#30
 Chloroform
 Concen: 1.52 ug/l
 RT: 5.27 min Scan# 675
 Delta R.T. 0.05 min
 Lab File: VX004415.D
 Acq: 07 Sep 2018 18:45

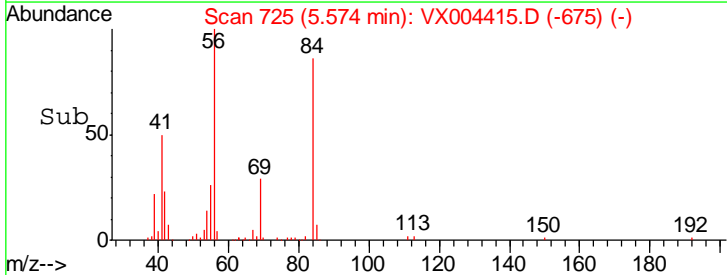
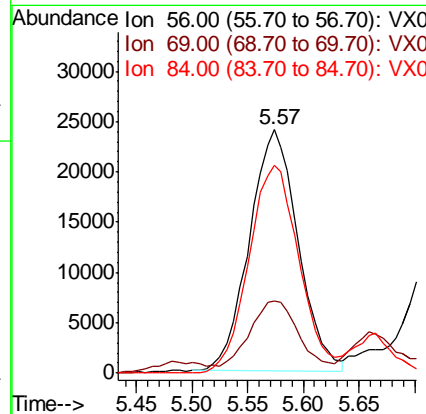
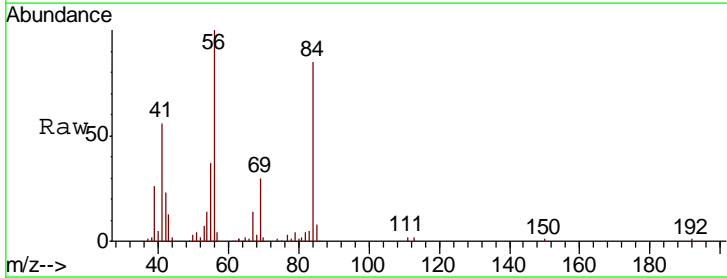
Instrument :
 MSVOA_X
 ClientSampled :
 MW-8

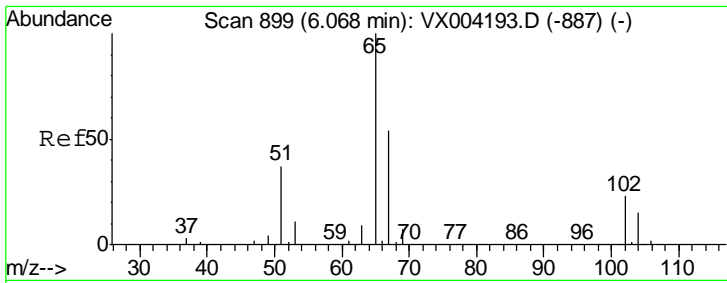
Tgt Ion: 83 Resp: 10794
 Ion Ratio Lower Upper
 83 100
 85 7.6 52.6 79.0#



#31
 Cyclohexane
 Concen: 11.94 ug/l
 RT: 5.57 min Scan# 725
 Delta R.T. 0.01 min
 Lab File: VX004415.D
 Acq: 07 Sep 2018 18:45

Tgt Ion: 56 Resp: 73073
 Ion Ratio Lower Upper
 56 100
 69 25.5 25.4 38.2
 84 86.2 71.4 107.2

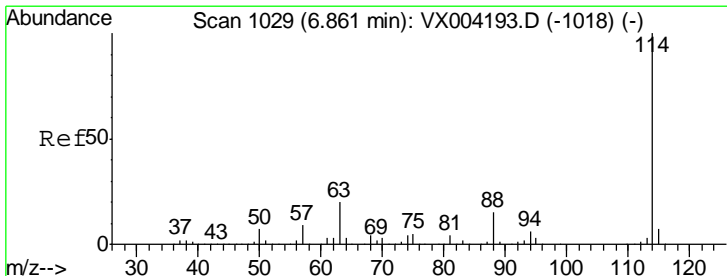
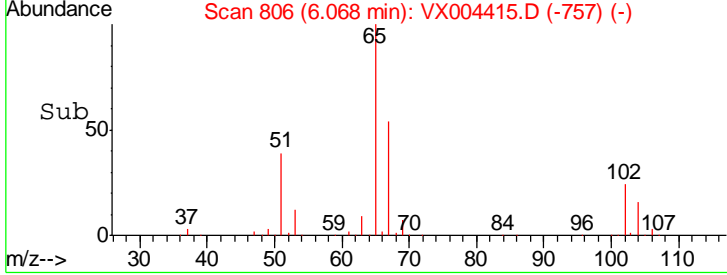
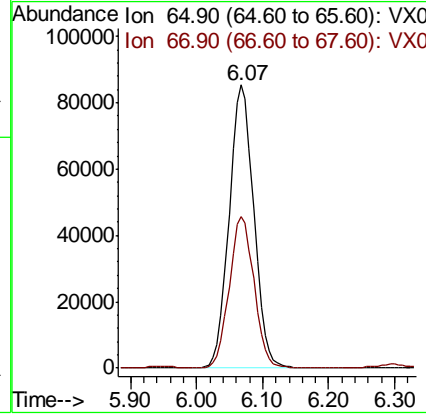
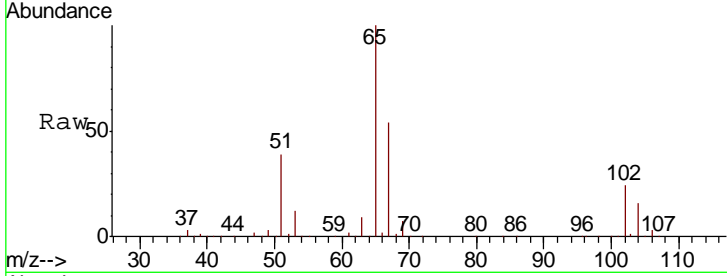




#33
 1,2-Dichloroethane-d4
 Concen: 50.65 ug/l
 RT: 6.07 min Scan# 806
 Delta R.T. -0.00 min
 Lab File: VX004415.D
 Acq: 07 Sep 2018 18:45

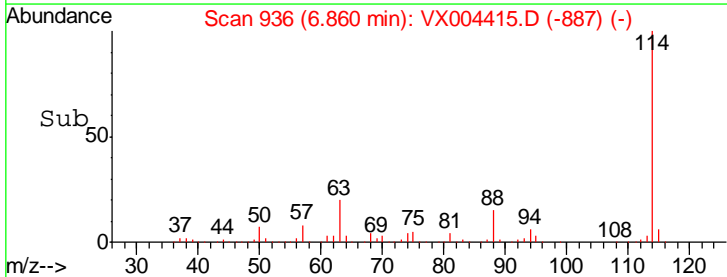
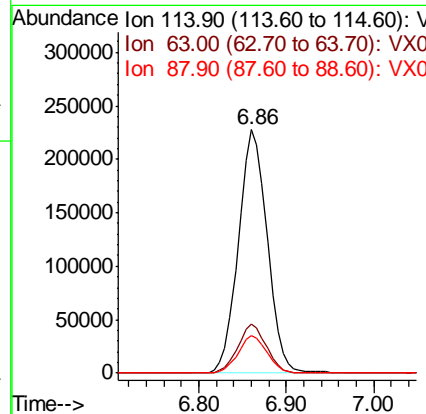
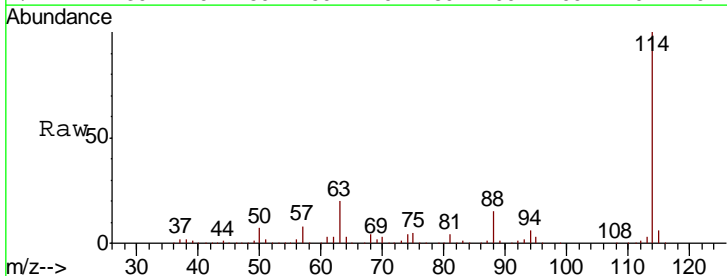
Instrument :
 MSVOA_X
 ClientSampled :
 MW-8

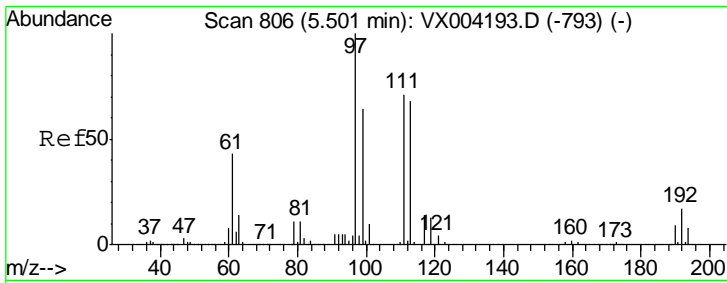
Tgt Ion	Resp	Lower	Upper
65	100		
67	53.5	0.0	106.8



#34
 1,4-Difluorobenzene
 Concen: 50.00 ug/l
 RT: 6.86 min Scan# 936
 Delta R.T. -0.00 min
 Lab File: VX004415.D
 Acq: 07 Sep 2018 18:45

Tgt Ion	Resp	Lower	Upper
114	100		
63	19.9	0.0	39.0
88	15.2	0.0	30.4

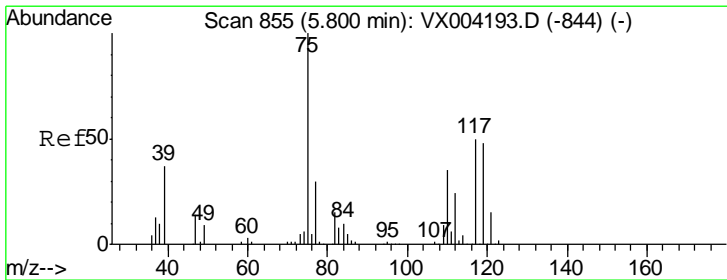
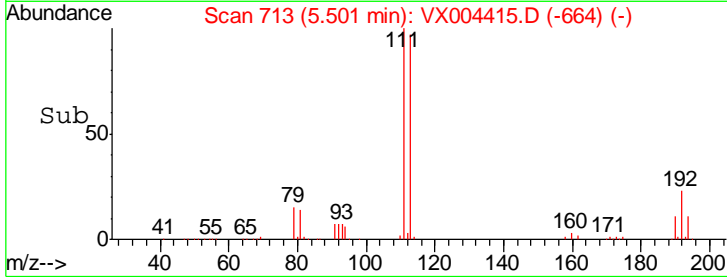
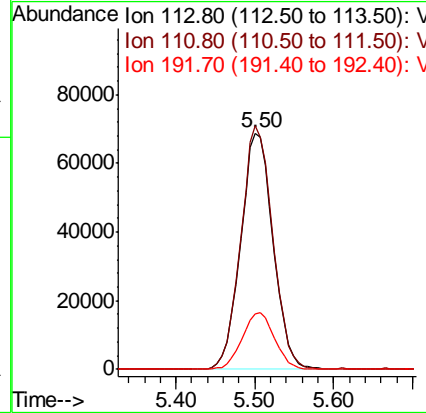
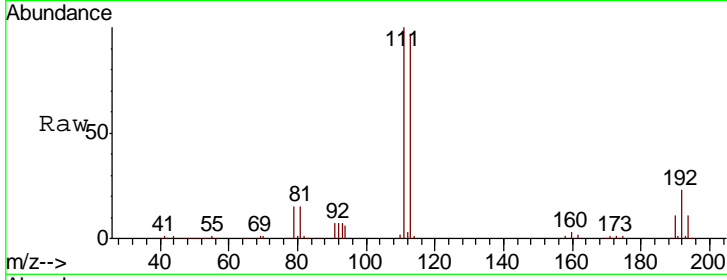




#35
 Dibromofluoromethane
 Concen: 50.30 ug/l
 RT: 5.50 min Scan# 713
 Delta R.T. -0.00 min
 Lab File: VX004415.D
 Acq: 07 Sep 2018 18:45

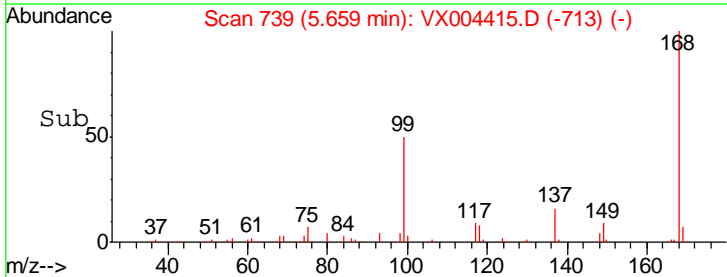
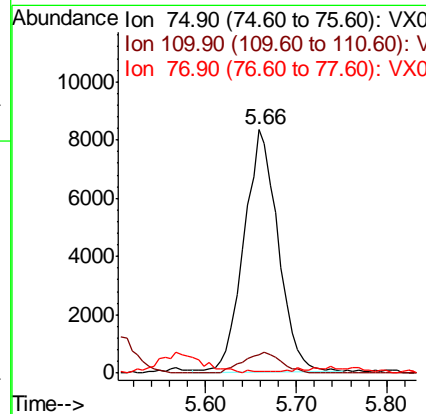
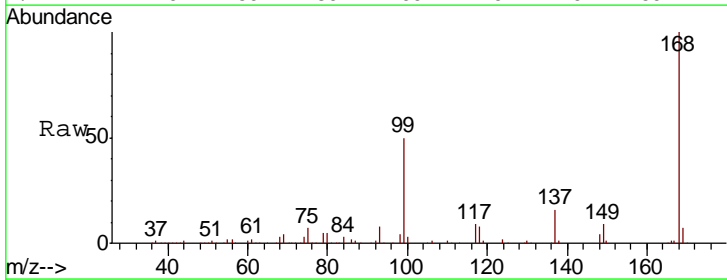
Instrument :
 MSVOA_X
 ClientSampled :
 MW-8

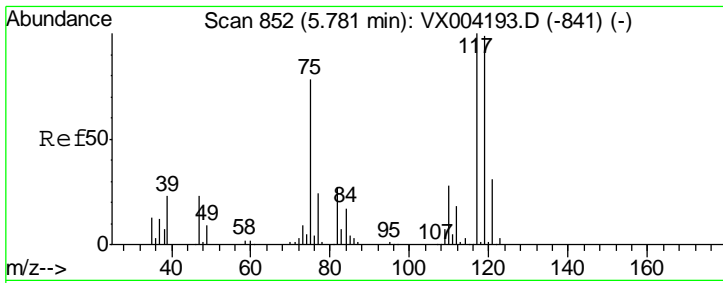
Tgt Ion	Resp	Lower	Upper
113	195935		
113	100		
111	101.8	82.4	123.6
192	24.1	19.4	29.2



#36
 1,1-Dichloropropene
 Concen: 3.68 ug/l
 RT: 5.66 min Scan# 739
 Delta R.T. -0.14 min
 Lab File: VX004415.D
 Acq: 07 Sep 2018 18:45

Tgt Ion	Resp	Lower	Upper
75	21681		
75	100		
110	9.4	18.0	54.0#
77	0.4	24.6	36.8#

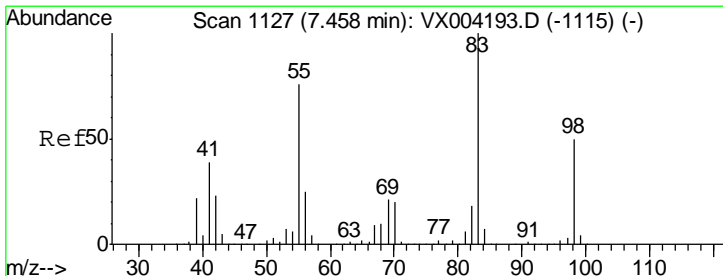
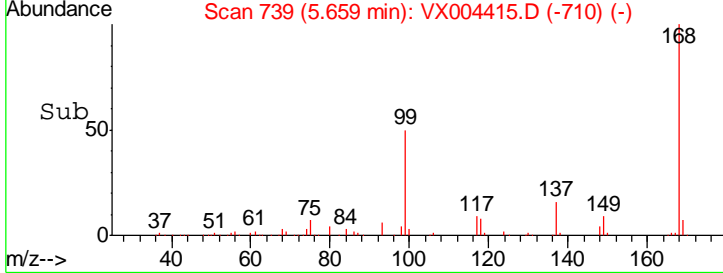
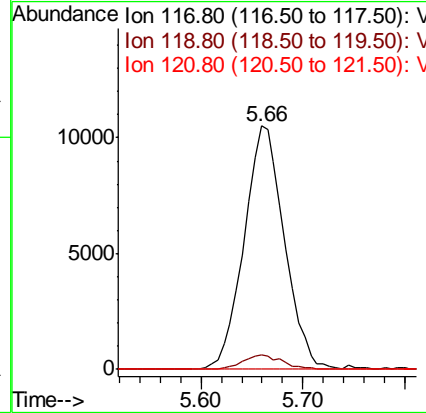
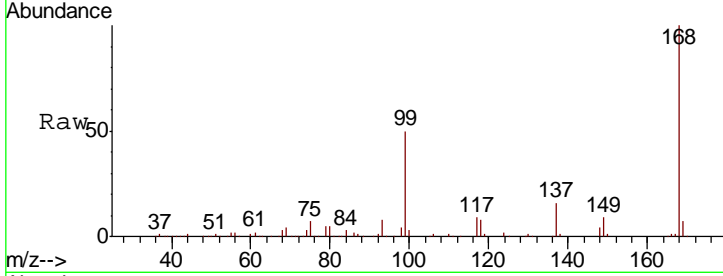




#38
 Carbon Tetrachloride
 Concen: 5.20 ug/l
 RT: 5.66 min Scan# 739
 Delta R.T. -0.12 min
 Lab File: VX004415.D
 Acq: 07 Sep 2018 18:45

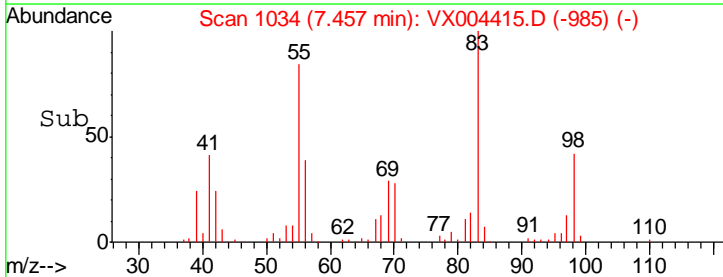
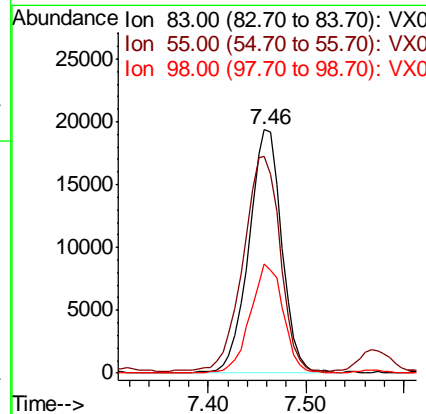
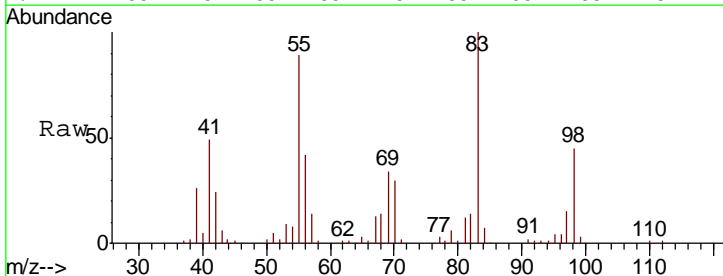
Instrument :
 MSVOA_X
 ClientSampled :
 MW-8

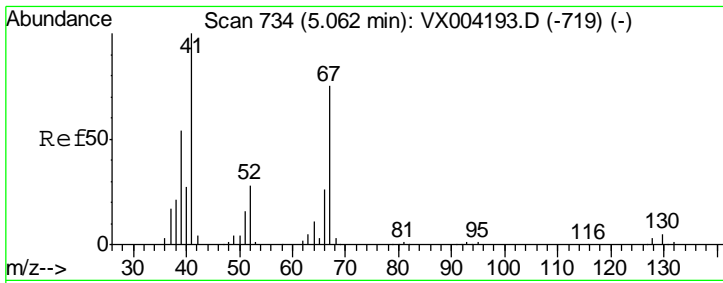
Tgt Ion	Resp	Lower	Upper
117	28815		
117	100		
119	6.1	78.8	118.2#
121	0.0	24.9	37.3#



#39
 Methylcyclohexane
 Concen: 6.77 ug/l
 RT: 7.46 min Scan# 1034
 Delta R.T. -0.00 min
 Lab File: VX004415.D
 Acq: 07 Sep 2018 18:45

Tgt Ion	Resp	Lower	Upper
83	45500		
83	100		
55	87.9	61.0	91.4
98	44.8	39.6	59.4

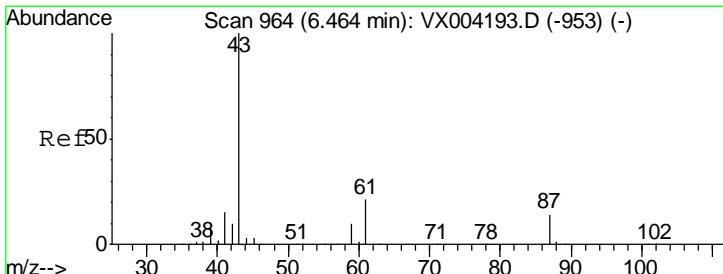
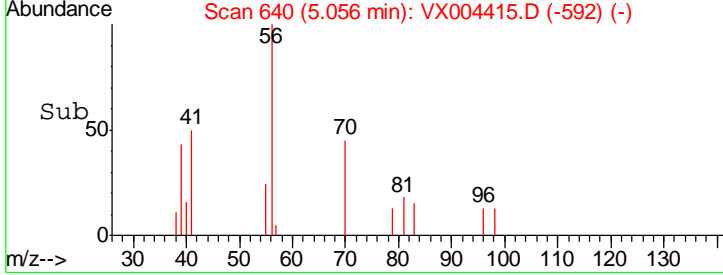
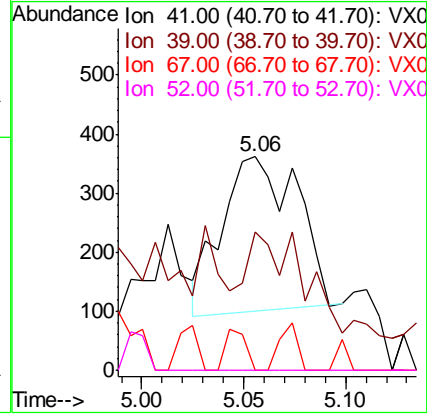
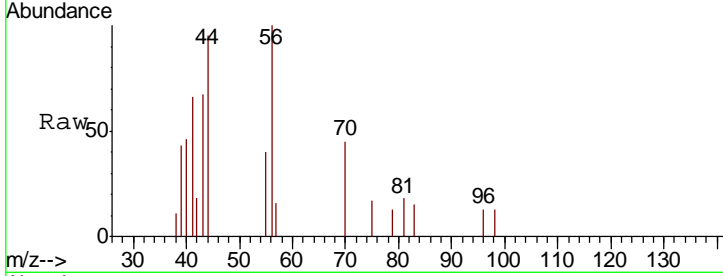




#41
 Methacrylonitrile
 Concen: 0.20 ug/l
 RT: 5.06 min Scan# 640
 Delta R.T. -0.01 min
 Lab File: VX004415.D
 Acq: 07 Sep 2018 18:45

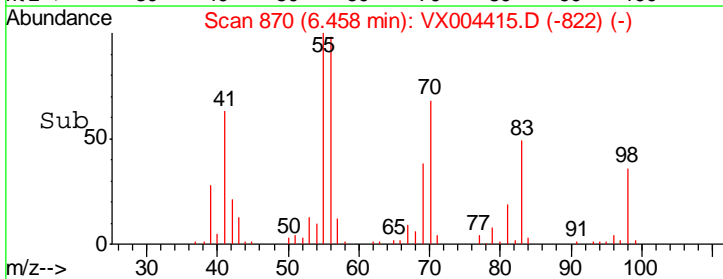
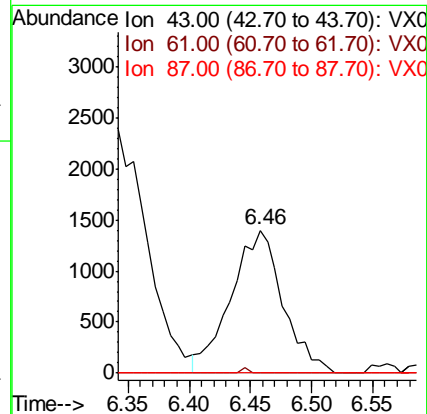
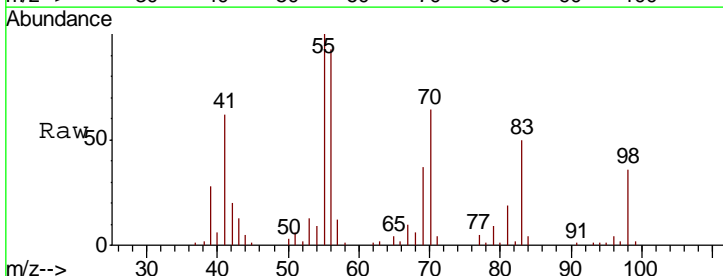
Instrument :
 MSVOA_X
 ClientSampled :
 MW-8

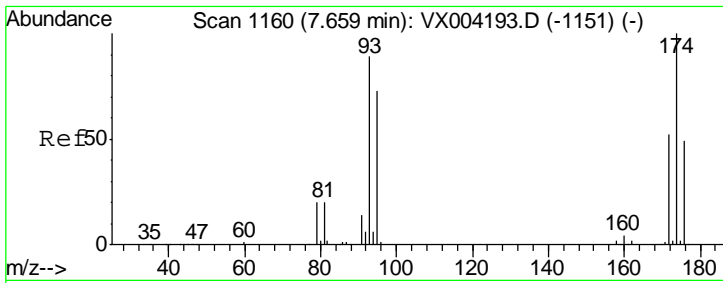
Tgt Ion	Resp	Lower	Upper
41	100		
39	56.9	42.4	63.6
67	0.0	59.2	88.8#
52	0.0	23.0	34.4#



#43
 Isopropyl Acetate
 Concen: 0.46 ug/l
 RT: 6.46 min Scan# 870
 Delta R.T. -0.01 min
 Lab File: VX004415.D
 Acq: 07 Sep 2018 18:45

Tgt Ion	Resp	Lower	Upper
43	100		
61	0.5	17.0	25.4#
87	0.0	11.4	17.2#

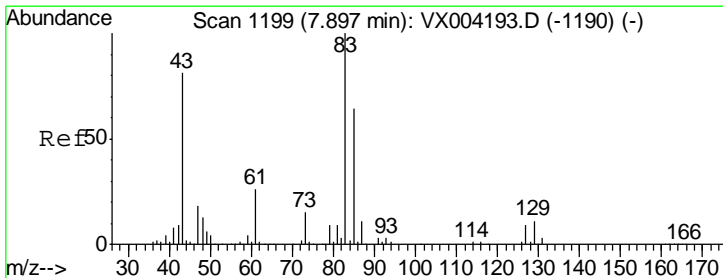
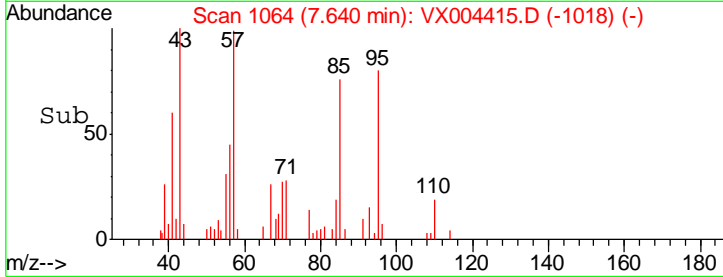
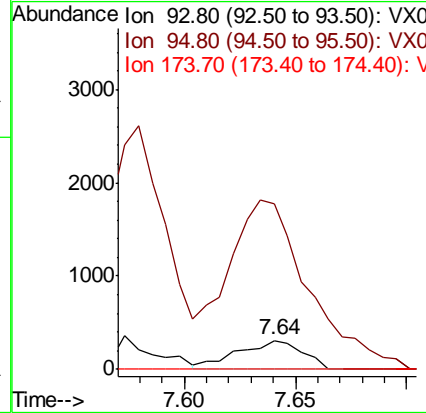
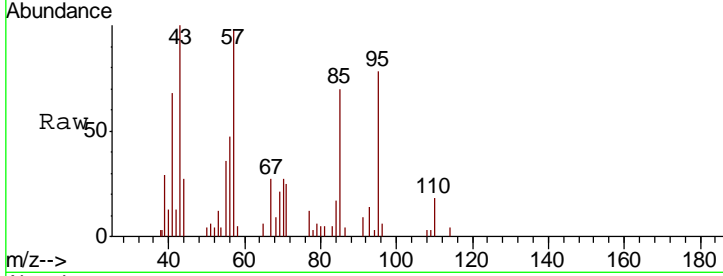




#46
 Dibromomethane
 Concen: 0.21 ug/l
 RT: 7.64 min Scan# 1064
 Delta R.T. -0.02 min
 Lab File: VX004415.D
 Acq: 07 Sep 2018 18:45

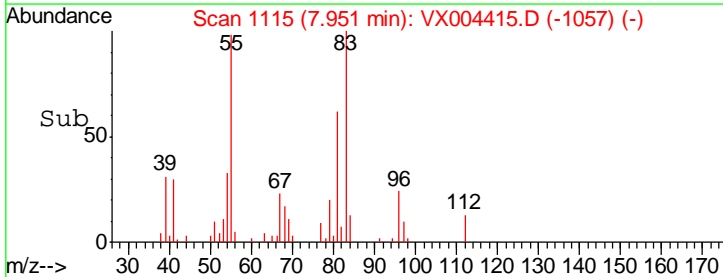
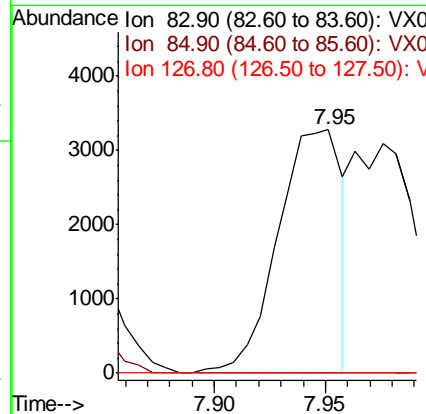
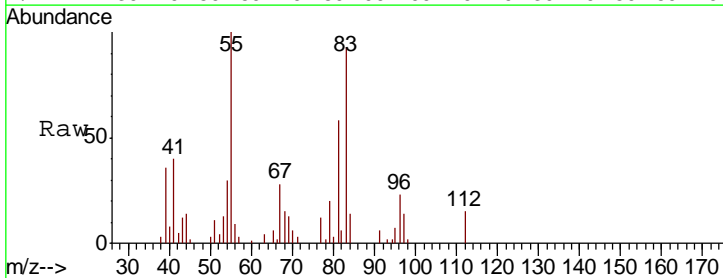
Instrument :
 MSVOA_X
 ClientSampled :
 MW-8

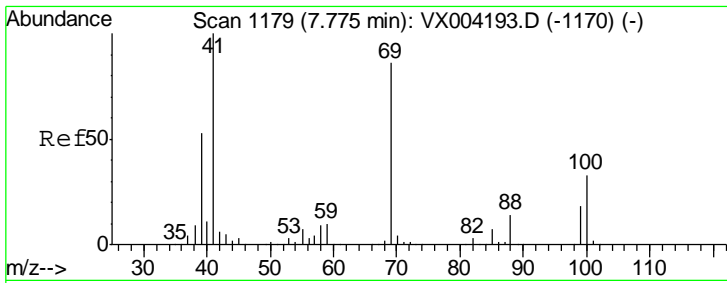
Tgt Ion	Resp	Lower	Upper
93	100		
95	743.3	65.5	98.3#
174	0.0	94.2	141.4#



#47
 Bromodichloromethane
 Concen: 1.20 ug/l
 RT: 7.95 min Scan# 1115
 Delta R.T. 0.05 min
 Lab File: VX004415.D
 Acq: 07 Sep 2018 18:45

Tgt Ion	Resp	Lower	Upper
83	100		
85	0.0	50.9	76.3#
127	0.0	7.3	10.9#

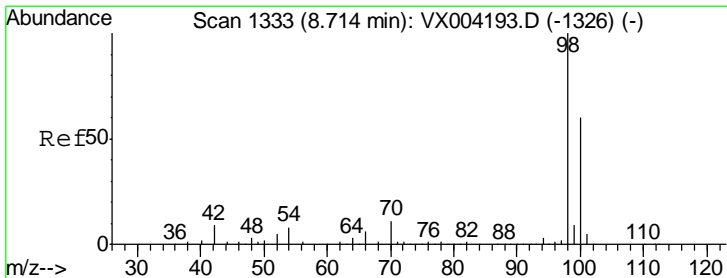
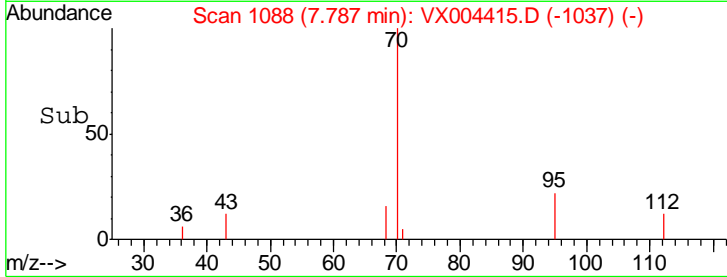
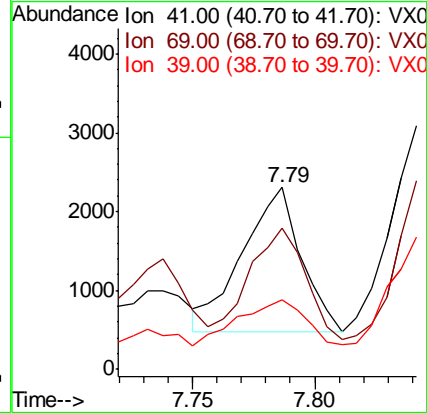
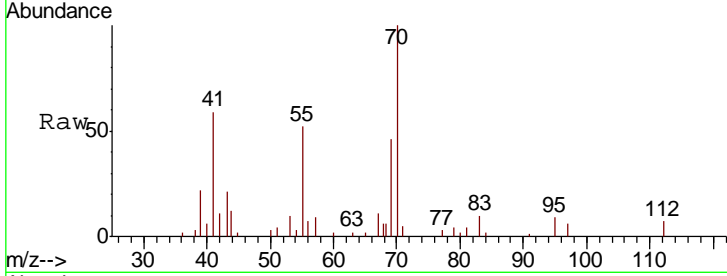




#48
 Methyl methacrylate
 Concen: 0.64 ug/l
 RT: 7.79 min Scan# 1088
 Delta R.T. 0.01 min
 Lab File: VX004415.D
 Acq: 07 Sep 2018 18:45

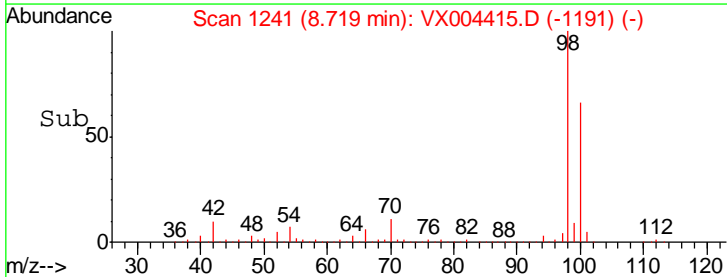
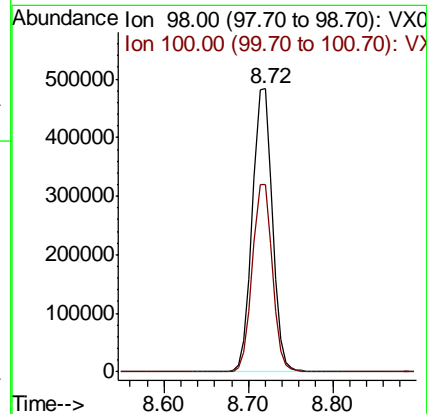
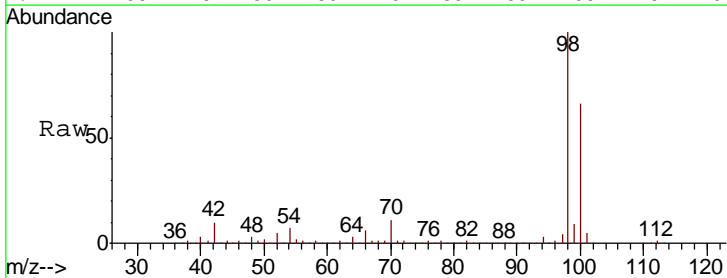
Instrument :
 MSVOA_X
 ClientSampled :
 MW-8

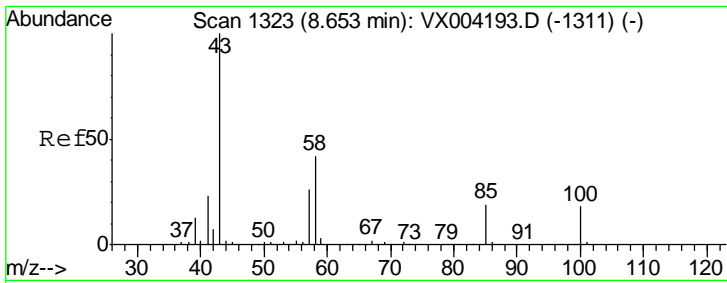
Tgt Ion	Resp	Lower	Upper
41	100		
69	92.5	70.2	105.4
39	47.7	42.7	64.1



#50
 Toluene-d8
 Concen: 52.39 ug/l
 RT: 8.72 min Scan# 1241
 Delta R.T. 0.01 min
 Lab File: VX004415.D
 Acq: 07 Sep 2018 18:45

Tgt Ion	Resp	Lower	Upper
98	100		
100	66.3	52.9	79.3

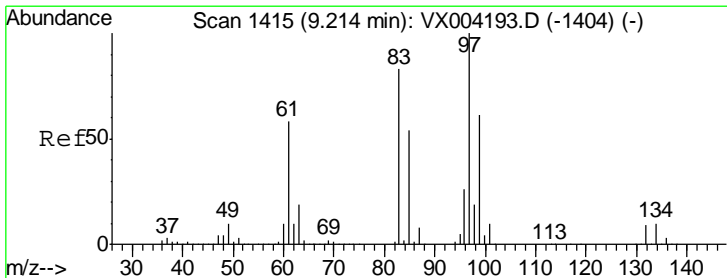
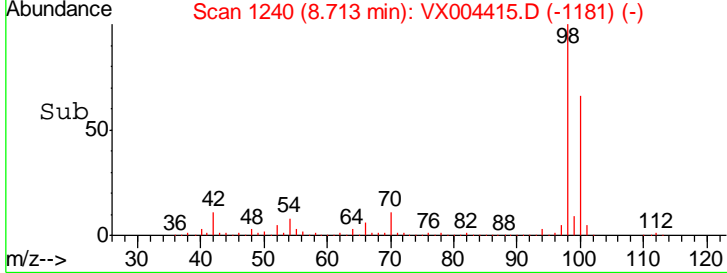
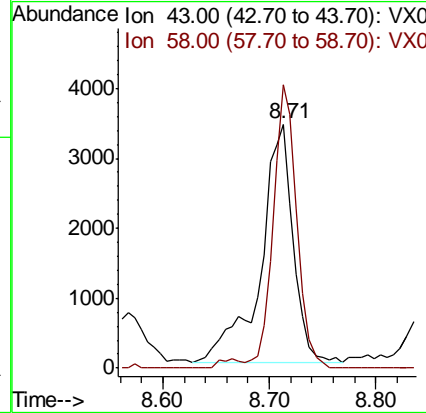
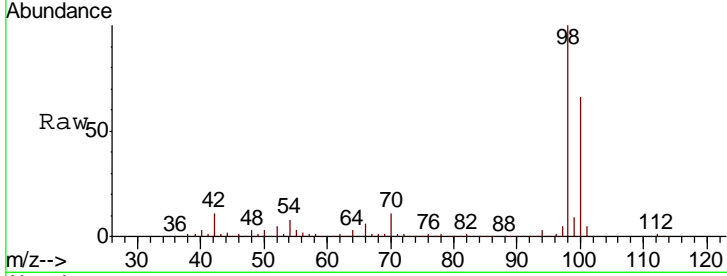




#51
 4-Methyl-2-Pentanone
 Concen: 1.14 ug/l
 RT: 8.71 min Scan# 1240
 Delta R.T. 0.06 min
 Lab File: VX004415.D
 Acq: 07 Sep 2018 18:45

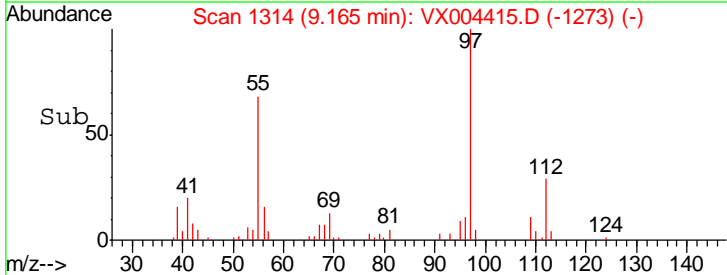
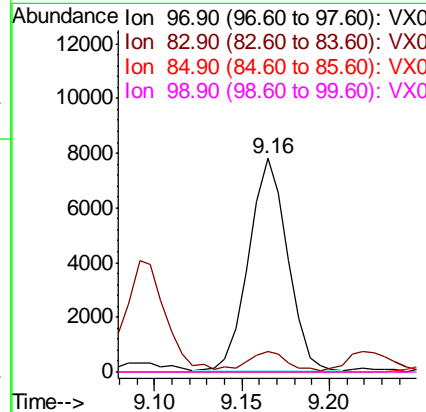
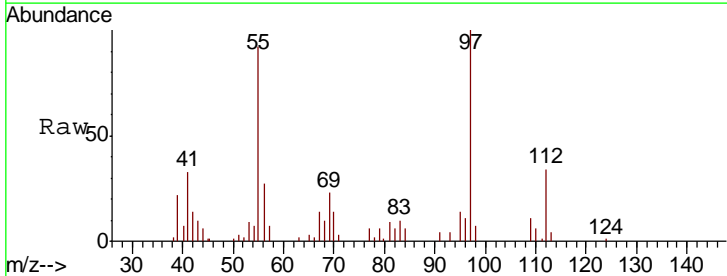
Instrument : MSVOA_X
 ClientSampled : MW-8

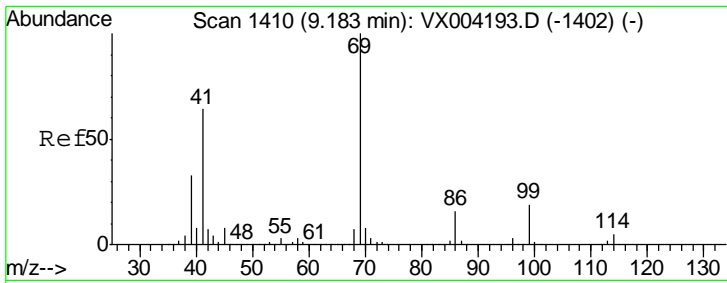
Tgt Ion	Resp	Lower	Upper
43	100		
58	84.7	33.1	49.7#



#55
 1,1,2-Trichloroethane
 Concen: 2.70 ug/l
 RT: 9.16 min Scan# 1314
 Delta R.T. -0.05 min
 Lab File: VX004415.D
 Acq: 07 Sep 2018 18:45

Tgt Ion	Resp	Lower	Upper
97	100		
83	6.8	66.4	99.6#
85	0.0	43.3	64.9#
99	0.0	49.0	73.4#

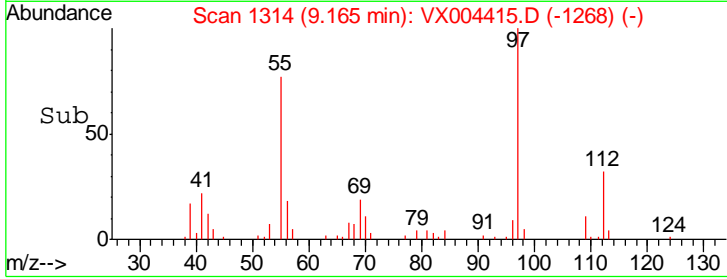
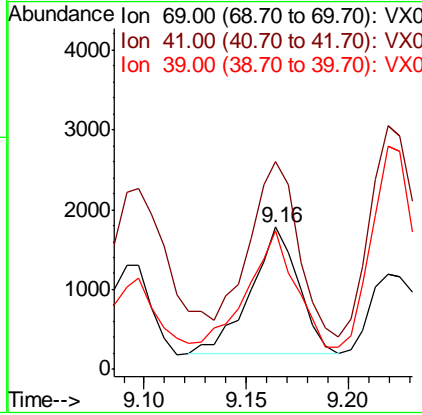
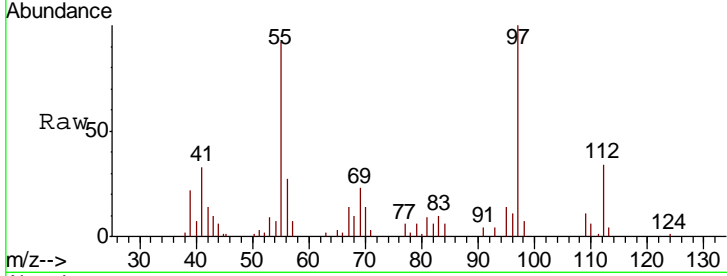




#56
 Ethyl methacrylate
 Concen: 0.43 ug/l
 RT: 9.16 min Scan# 1314
 Delta R.T. -0.02 min
 Lab File: VX004415.D
 Acq: 07 Sep 2018 18:45

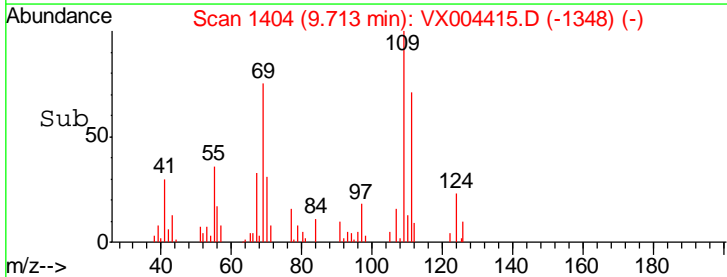
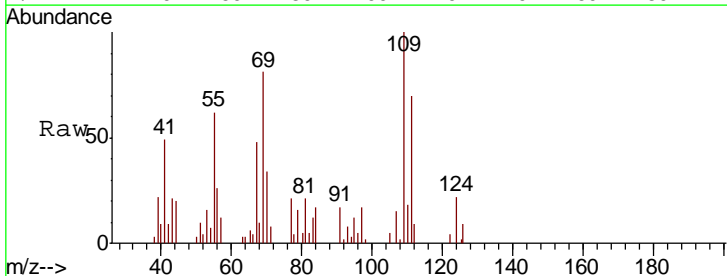
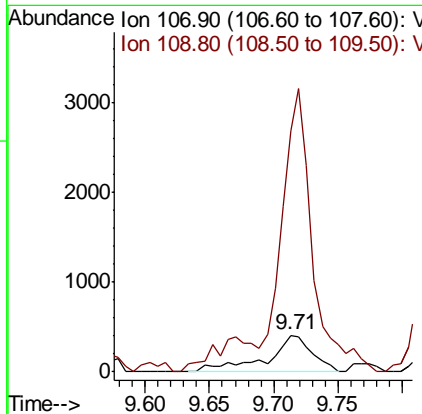
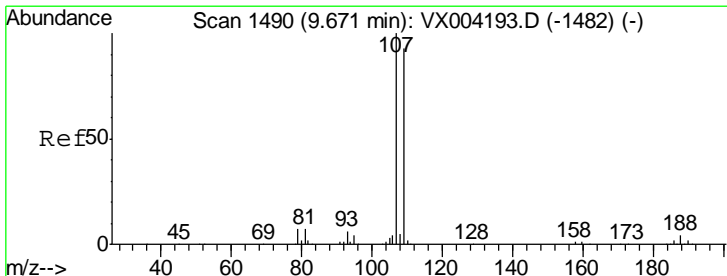
Instrument :
 MSVOA_X
 ClientSampled :
 MW-8

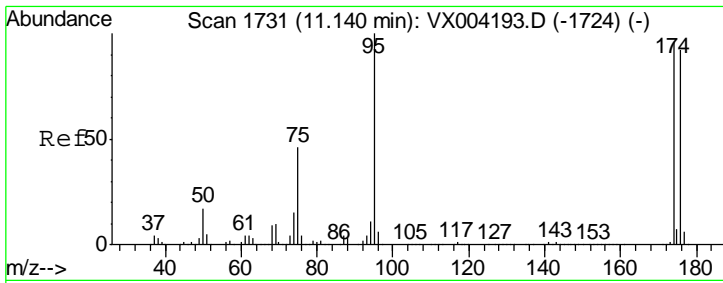
Tgt Ion	Resp	Lower	Upper
69	100		
41	139.3	51.0	76.4#
39	91.7	26.1	39.1#



#61
 1,2-Dibromoethane
 Concen: 0.22 ug/l
 RT: 9.71 min Scan# 1404
 Delta R.T. 0.04 min
 Lab File: VX004415.D
 Acq: 07 Sep 2018 18:45

Tgt Ion	Resp	Lower	Upper
107	100		
109	525.0	76.0	114.0#

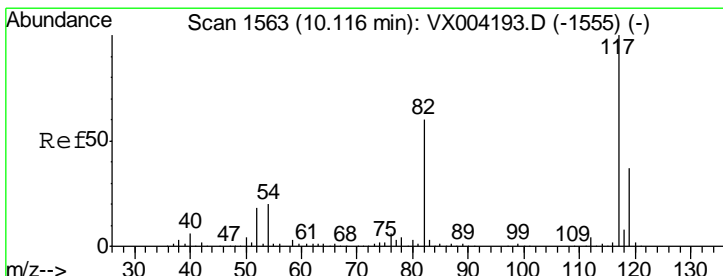
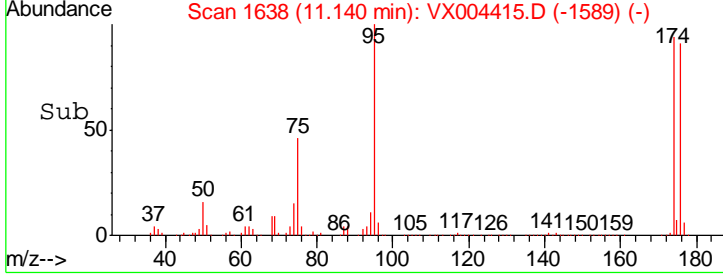
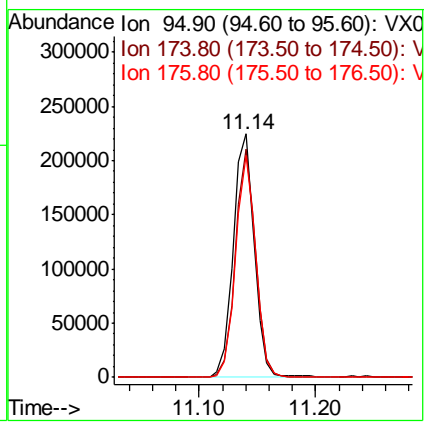
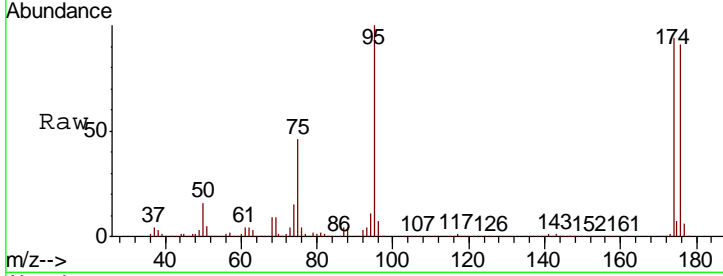




#62
 4-Bromofluorobenzene
 Concen: 51.66 ug/l
 RT: 11.14 min Scan# 1638
 Delta R.T. -0.00 min
 Lab File: VX004415.D
 Acq: 07 Sep 2018 18:45

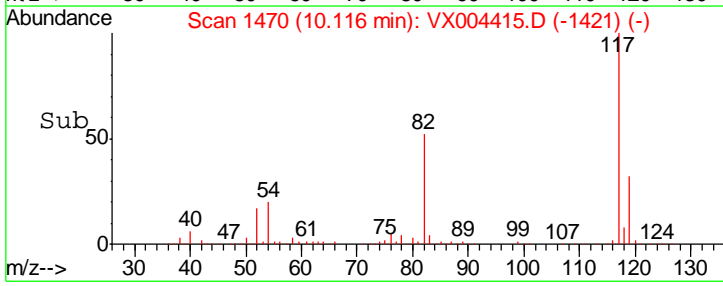
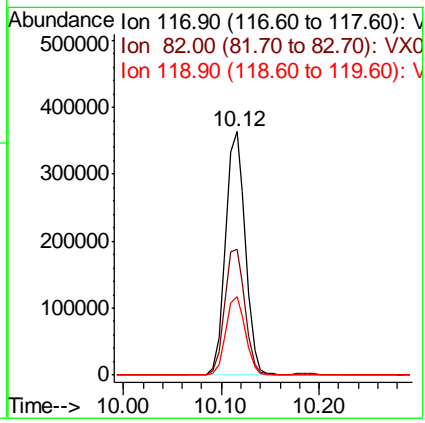
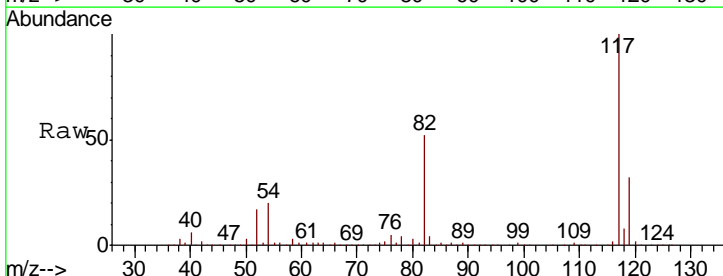
Instrument : MSVOA_X
 Client Sampled : MW-8

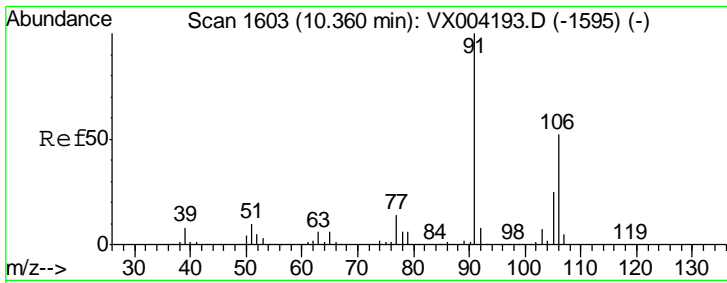
Tgt Ion	Resp	Lower	Upper
95	100		
174	90.2	0.0	185.2
176	87.3	0.0	178.6



#63
 Chlorobenzene-d5
 Concen: 50.00 ug/l
 RT: 10.12 min Scan# 1470
 Delta R.T. -0.00 min
 Lab File: VX004415.D
 Acq: 07 Sep 2018 18:45

Tgt Ion	Resp	Lower	Upper
117	100		
82	51.7	47.8	71.6
119	32.4	29.3	43.9

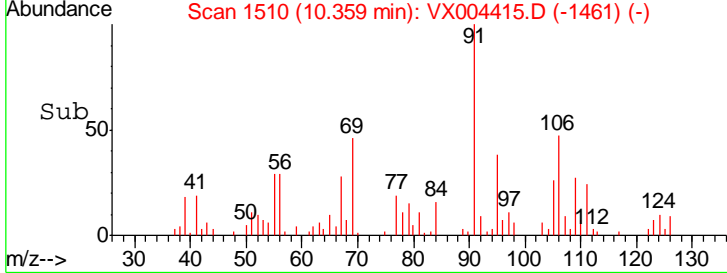
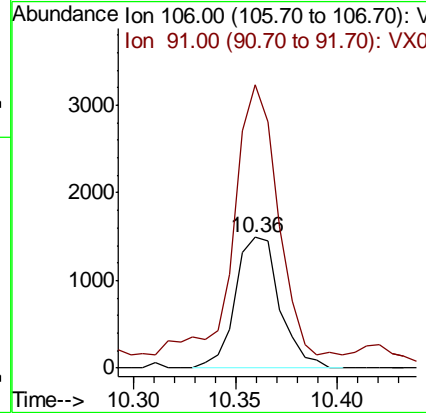
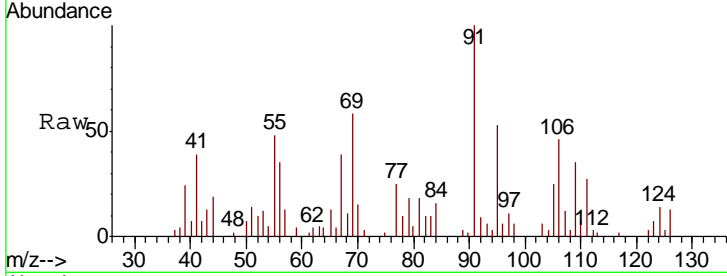




#68
 m/p-Xylenes
 Concen: 0.28 ug/l
 RT: 10.36 min Scan# 1510
 Delta R.T. -0.00 min
 Lab File: VX004415.D
 Acq: 07 Sep 2018 18:45

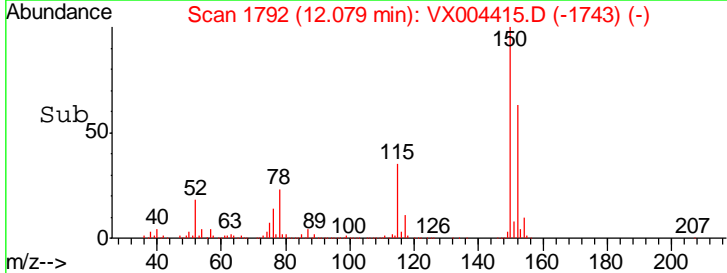
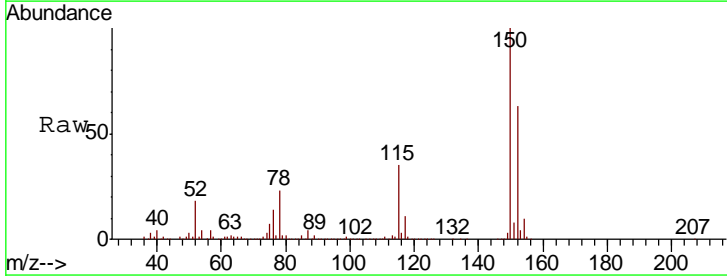
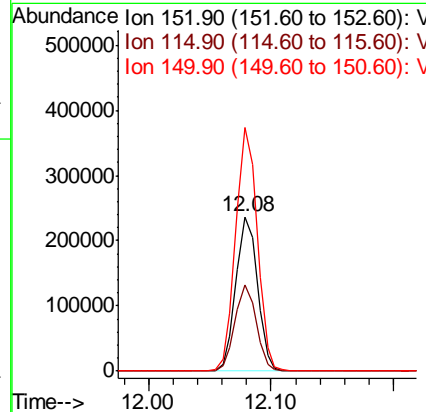
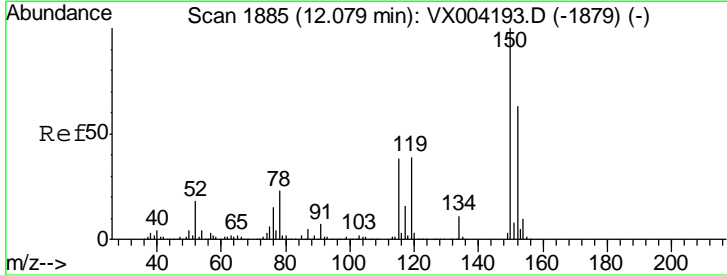
Instrument : MSVOA_X
 ClientSampled : MW-8

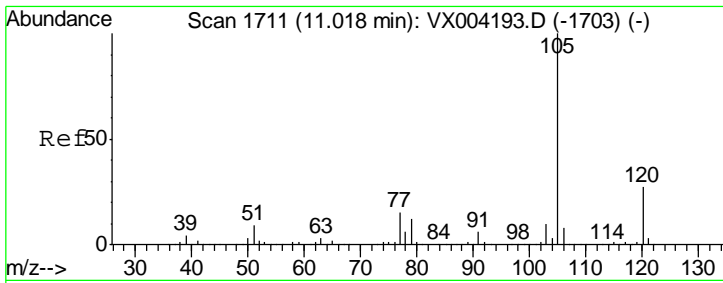
Tgt Ion	Resp	Lower	Upper
106	2242		
91	213.6	157.1	235.7



#72
 1,4-Dichlorobenzene-d4
 Concen: 50.00 ug/l
 RT: 12.08 min Scan# 1792
 Delta R.T. -0.00 min
 Lab File: VX004415.D
 Acq: 07 Sep 2018 18:45

Tgt Ion	Resp	Lower	Upper
152	288154		
115	55.1	39.0	117.0
150	157.3	0.0	351.0

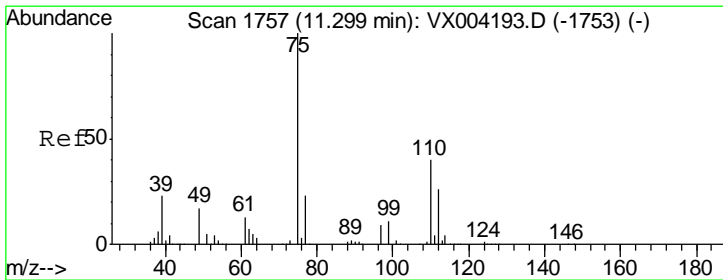
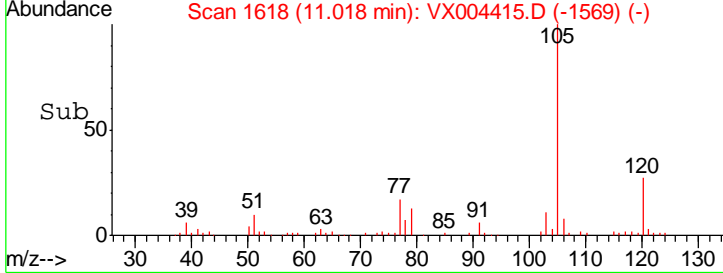
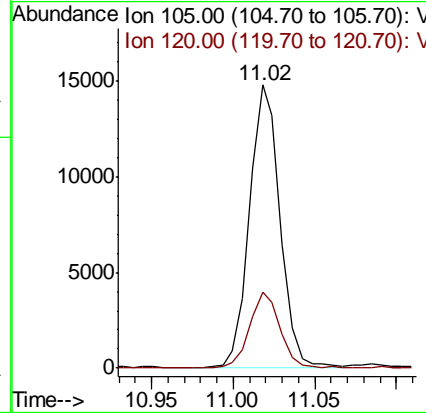
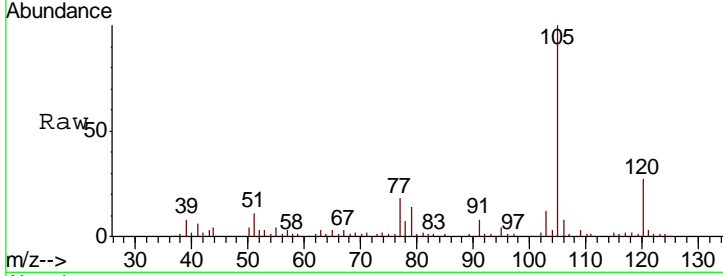




#73
 Isopropylbenzene
 Concen: 1.03 ug/l
 RT: 11.02 min Scan# 1618
 Delta R.T. -0.00 min
 Lab File: VX004415.D
 Acq: 07 Sep 2018 18:45

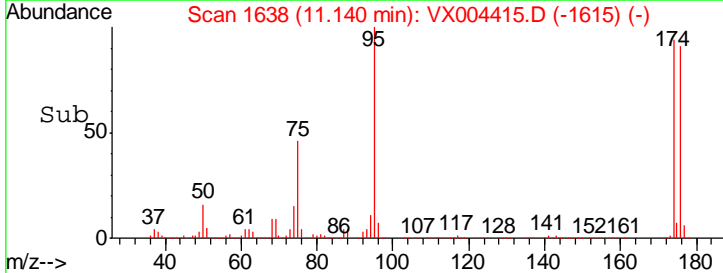
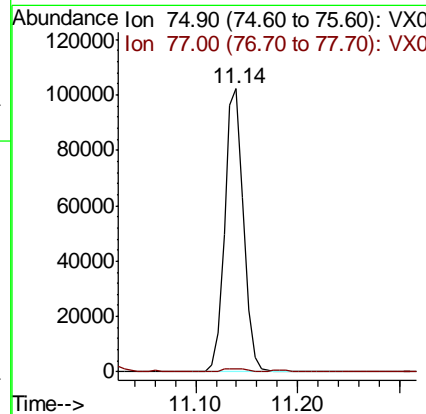
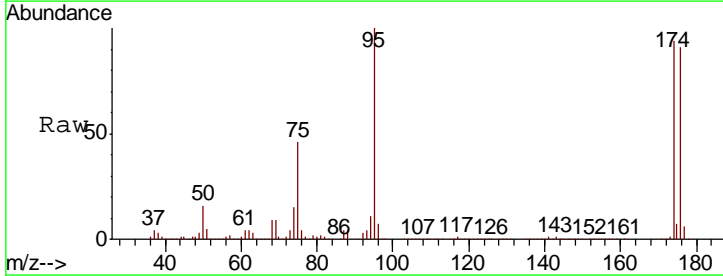
Instrument : MSVOA_X
 ClientSampled : MW-8

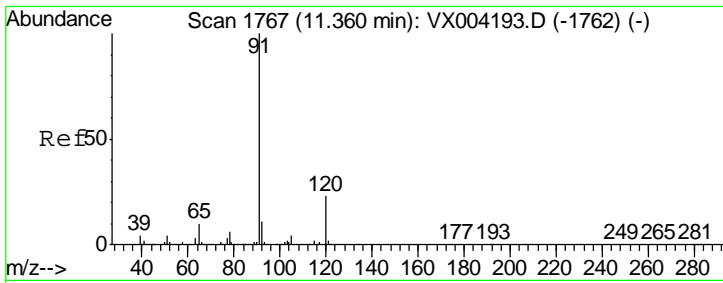
Tgt Ion	Resp	Lower	Upper
105	19436		
120	26.7	13.5	40.4



#76
 1,2,3-Trichloropropane
 Concen: 22.37 ug/l
 RT: 11.14 min Scan# 1638
 Delta R.T. -0.16 min
 Lab File: VX004415.D
 Acq: 07 Sep 2018 18:45

Tgt Ion	Resp	Lower	Upper
75	131083		
77	1.2	20.2	60.6#

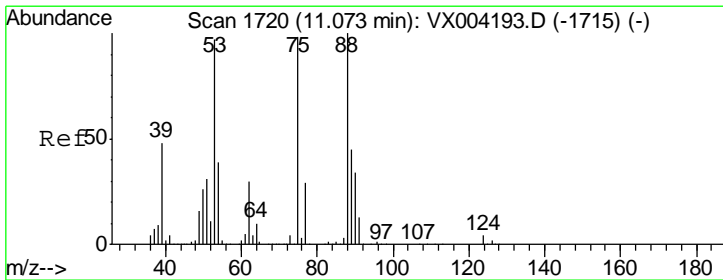
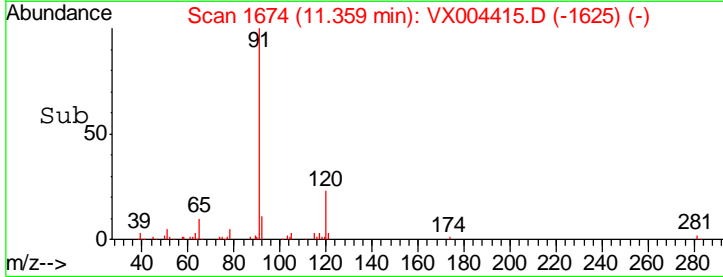
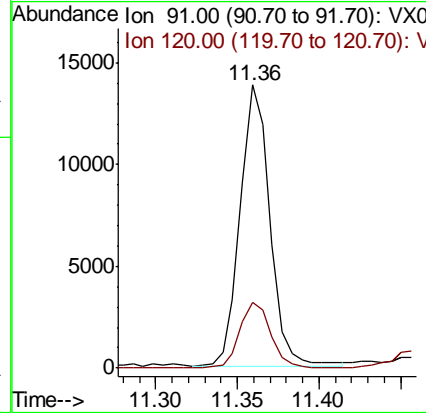
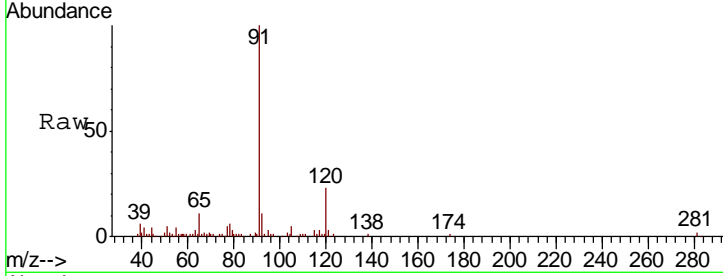




#78
 n-propylbenzene
 Concen: 0.81 ug/l
 RT: 11.36 min Scan# 1674
 Delta R.T. -0.00 min
 Lab File: VX004415.D
 Acq: 07 Sep 2018 18:45

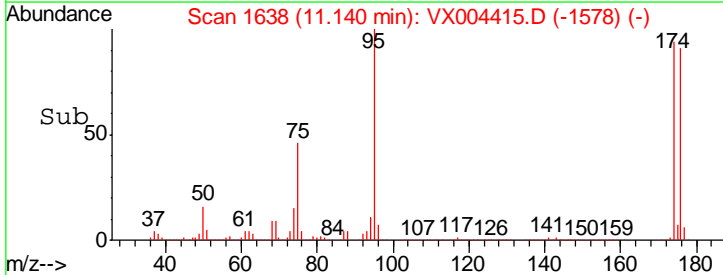
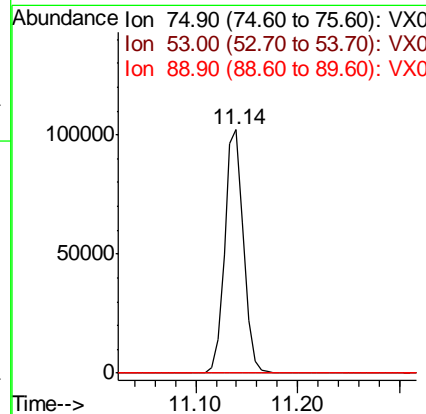
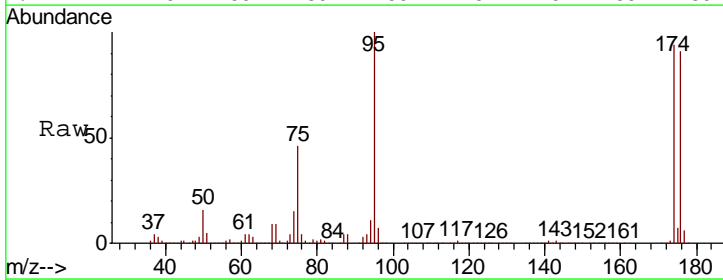
Instrument : MSVOA_X
 ClientSampled : MW-8

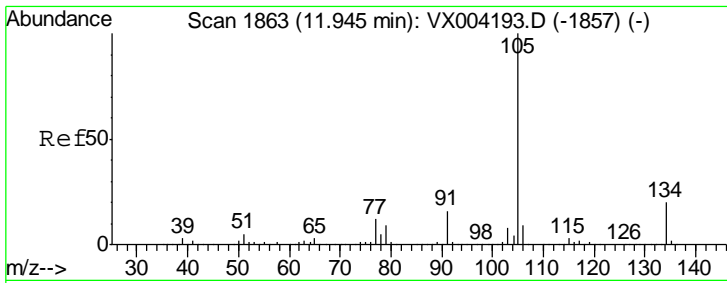
Tgt Ion	Resp	Lower	Upper
91	17600		
120	24.3	11.9	35.9



#81
 trans-1,4-Dichloro-2-butene
 Concen: 72.57 ug/l
 RT: 11.14 min Scan# 1638
 Delta R.T. 0.07 min
 Lab File: VX004415.D
 Acq: 07 Sep 2018 18:45

Tgt Ion	Resp	Lower	Upper
75	131083		
53	0.1	80.1	120.1#
89	0.0	37.2	55.8#

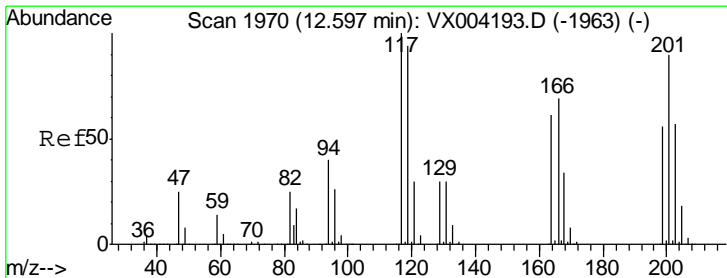
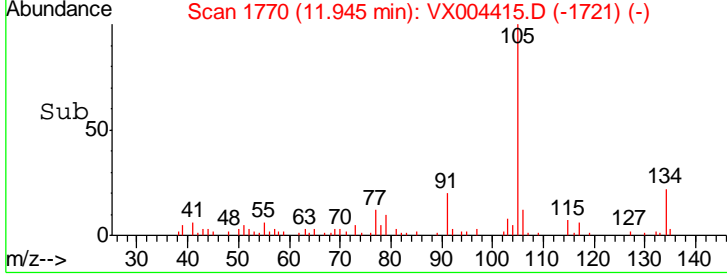
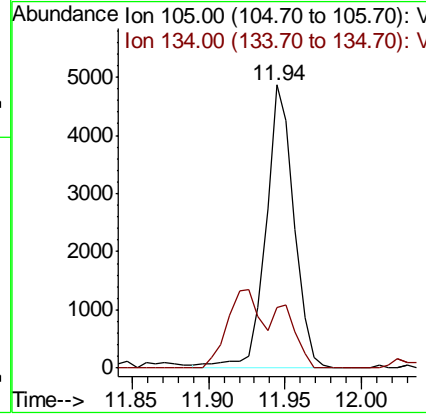
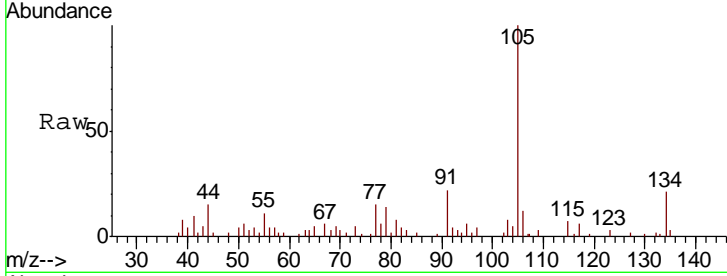




#85
 sec-Butylbenzene
 Concen: 0.33 ug/l
 RT: 11.94 min Scan# 1770
 Delta R.T. -0.00 min
 Lab File: VX004415.D
 Acq: 07 Sep 2018 18:45

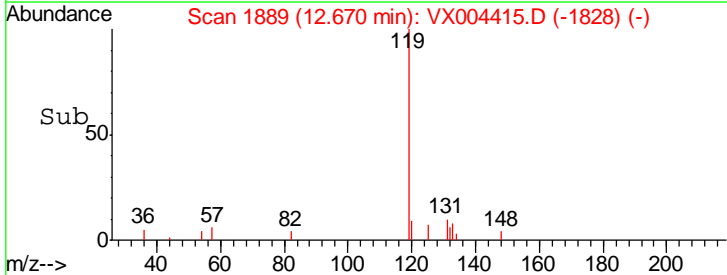
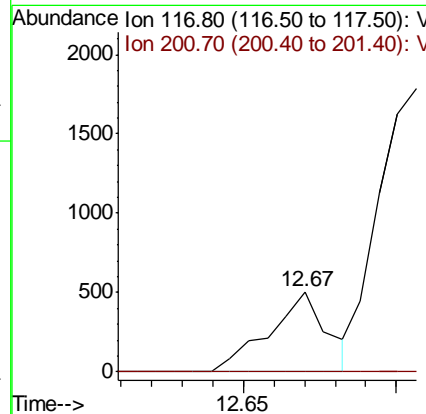
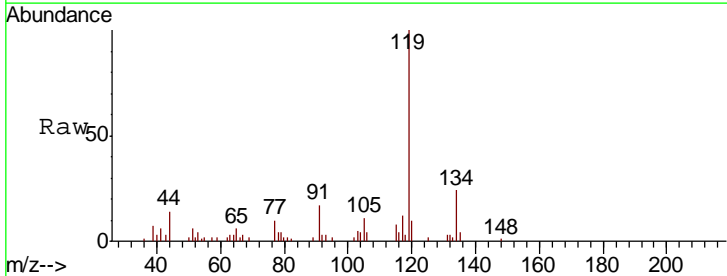
Instrument :
 MSVOA_X
 ClientSampled :
 MW-8

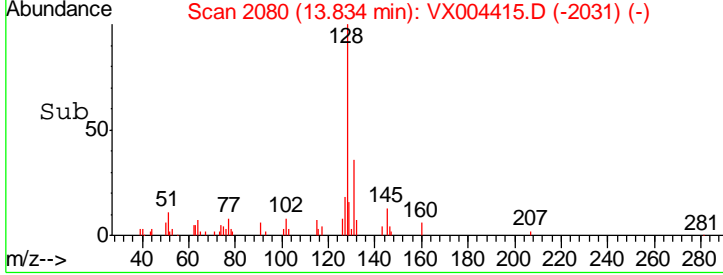
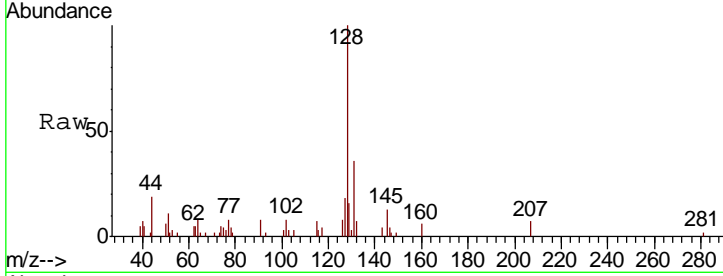
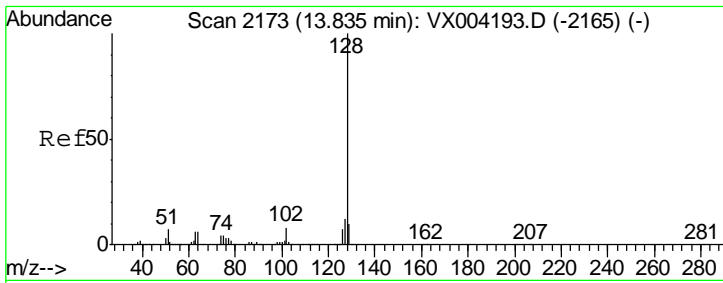
Tgt Ion:105 Resp: 6232
 Ion Ratio Lower Upper
 105 100
 134 17.6 10.5 31.5



#90
 Hexachloroethane
 Concen: 0.28 ug/l
 RT: 12.67 min Scan# 1889
 Delta R.T. 0.07 min
 Lab File: VX004415.D
 Acq: 07 Sep 2018 18:45

Tgt Ion:117 Resp: 657
 Ion Ratio Lower Upper
 117 100
 201 0.0 46.9 140.6#





#95
 Naphthalene
 Concen: 0.30 ug/l
 RT: 13.83 min Scan# 2080
 Delta R.T. -0.00 min
 Lab File: VX004415.D
 Acq: 07 Sep 2018 18:45

Instrument : MSVOA_X
 ClientSampleId : MW-8

Tot Ion	Ion	Ratio	Lower	Upper
5604	128	100		
	127	14.0	10.2	15.2
	129	0.0	8.6	12.8#

