

Data Path : Z:\voasrv\HPCHEM1\MSVOA_X\Data\VX090722\
 Data File : VX031182.D
 Acq On : 08 Sep 2022 00:16
 Operator : JC/MD
 Sample : N4355-14
 Misc : 5.0mL/MSVOA_X/WATER
 ALS Vial : 35 Sample Multiplier: 1

Instrument :
 MSVOA_X
 ClientSampleId :
 MW-44

Quant Time: Sep 08 00:58:00 2022
 Quant Method : Z:\voasrv\HPCHEM1\MSVOA_X\Method\82X090722W.M
 Quant Title : SW846 8260
 QLast Update : Wed Sep 07 23:22:41 2022
 Response via : Initial Calibration

Compound	R.T.	QIon	Response	Conc	Units	Dev(Min)

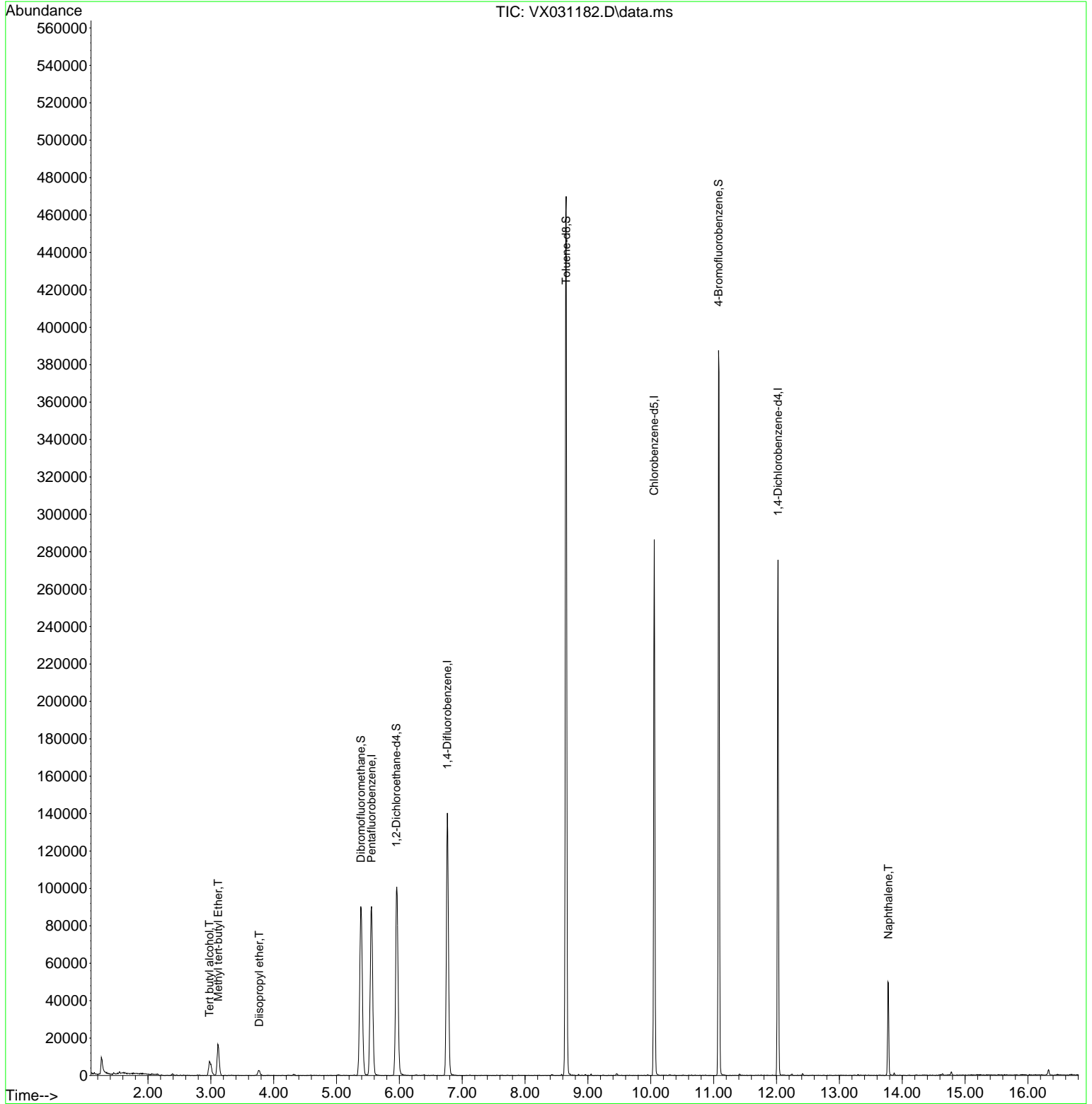
Internal Standards						
1) Pentafluorobenzene	5.556	168	79217	50.000	ug/l	0.00
34) 1,4-Difluorobenzene	6.763	114	138414	50.000	ug/l	0.00
63) Chlorobenzene-d5	10.055	117	124915	50.000	ug/l	0.00
72) 1,4-Dichlorobenzene-d4	12.024	152	53337	50.000	ug/l	0.00
System Monitoring Compounds						
33) 1,2-Dichloroethane-d4	5.952	65	108051	57.612	ug/l	0.00
Spiked Amount	50.000	Range	74 - 125	Recovery	=	115.220%
35) Dibromofluoromethane	5.385	113	81715	54.175	ug/l	0.00
Spiked Amount	50.000	Range	75 - 124	Recovery	=	108.360%
50) Toluene-d8	8.653	98	283779	51.783	ug/l	0.00
Spiked Amount	50.000	Range	86 - 113	Recovery	=	103.560%
62) 4-Bromofluorobenzene	11.079	95	108435	53.994	ug/l	0.00
Spiked Amount	50.000	Range	83 - 123	Recovery	=	107.980%
Target Compounds						
					Qvalue	
11) Tert butyl alcohol	2.977	59	13641	15.677	ug/l #	91
19) Methyl tert-butyl Ether	3.117	73	19561	4.118	ug/l #	88
22) Diisopropyl ether	3.769	45	2894	0.767	ug/l #	72
95) Naphthalene	13.780	128	31963	7.605	ug/l	99

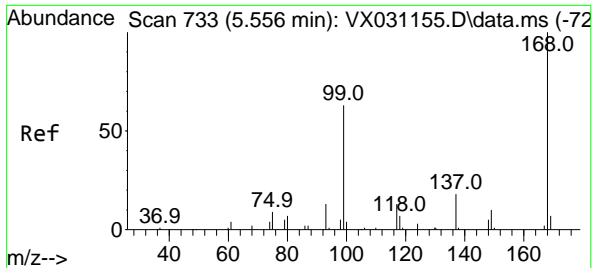
(#) = qualifier out of range (m) = manual integration (+) = signals summed

Data Path : Z:\voasrv\HPCHEM1\MSVOA_X\Data\VX090722\
 Data File : VX031182.D
 Acq On : 08 Sep 2022 00:16
 Operator : JC/MD
 Sample : N4355-14
 Misc : 5.0mL/MSVOA_X/WATER
 ALS Vial : 35 Sample Multiplier: 1

Instrument :
 MSVOA_X
 ClientSampleId :
 MW-44

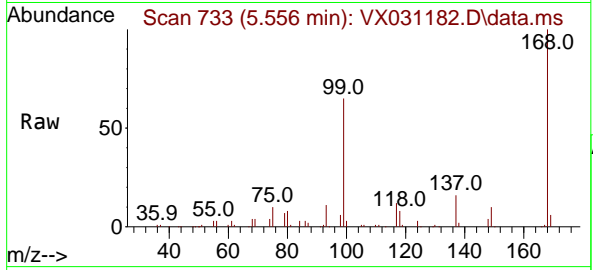
Quant Time: Sep 08 00:58:00 2022
 Quant Method : Z:\voasrv\HPCHEM1\MSVOA_X\Method\82X090722W.M
 Quant Title : SW846 8260
 QLast Update : Wed Sep 07 23:22:41 2022
 Response via : Initial Calibration



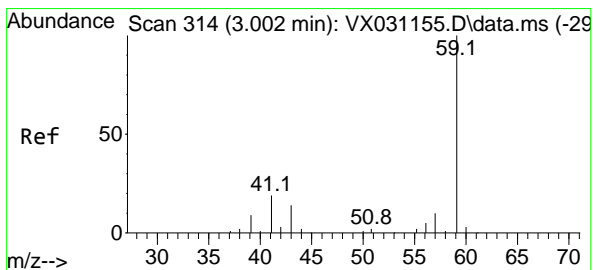
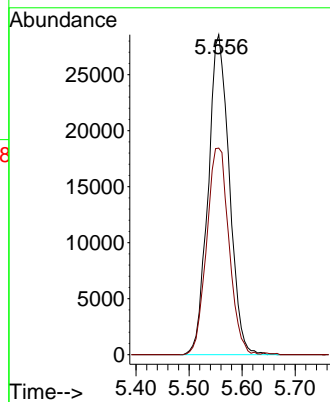
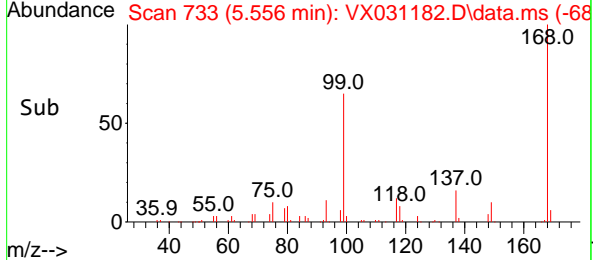


#1
 Pentafluorobenzene
 Concen: 50.000 ug/l
 RT: 5.556 min Scan# 71
 Delta R.T. -0.000 min
 Lab File: VX031182.D
 Acq: 08 Sep 2022 00:16

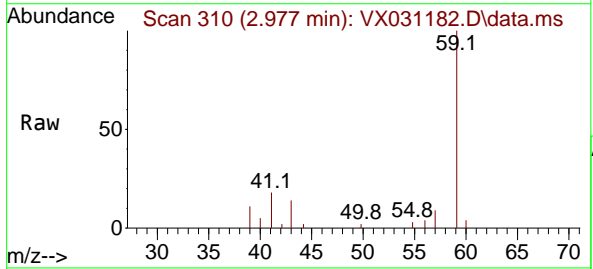
Instrument : MSVOA_X
 ClientSampleId : MW-44



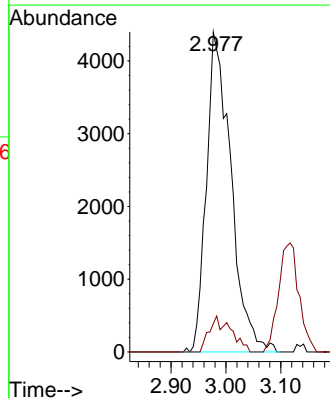
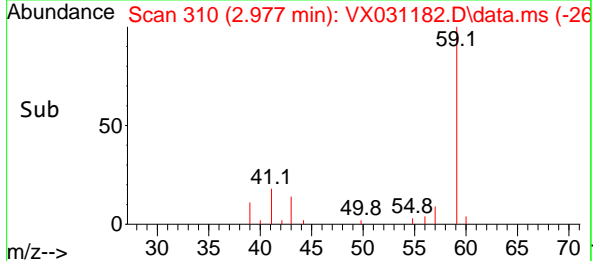
Tgt Ion:168 Resp: 79217
 Ion Ratio Lower Upper
 168 100
 99 64.6 44.0 66.0

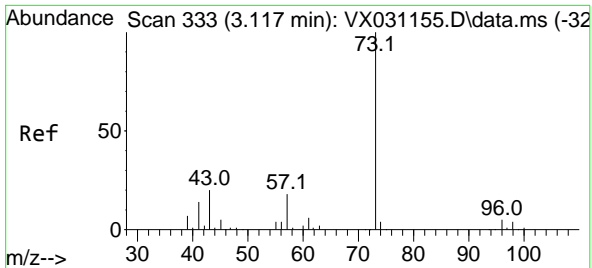


#11
 Tert butyl alcohol
 Concen: 15.677 ug/l
 RT: 2.977 min Scan# 310
 Delta R.T. -0.025 min
 Lab File: VX031182.D
 Acq: 08 Sep 2022 00:16



Tgt Ion: 59 Resp: 13641
 Ion Ratio Lower Upper
 59 100
 57 5.9 7.4 11.2#

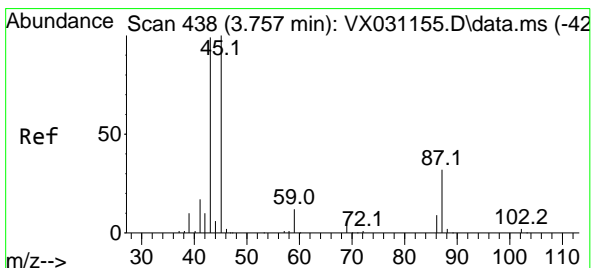
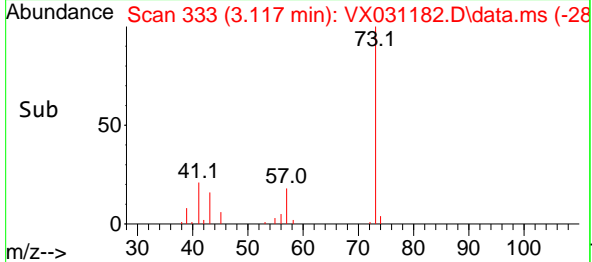
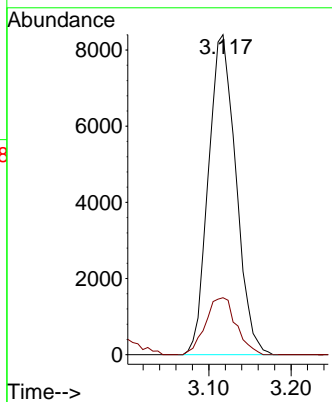
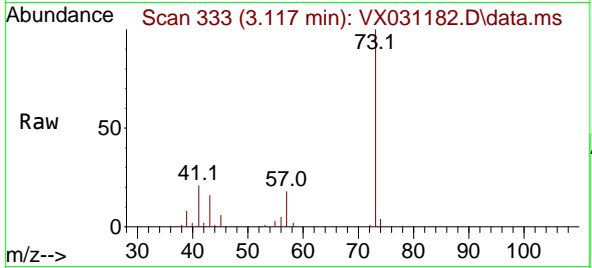




#19
 Methyl tert-butyl Ether
 Concen: 4.118 ug/l
 RT: 3.117 min Scan# 31
 Delta R.T. -0.000 min
 Lab File: VX031182.D
 Acq: 08 Sep 2022 00:16

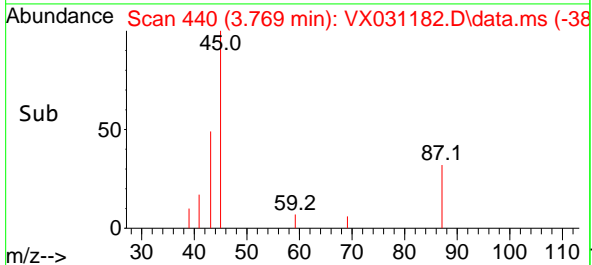
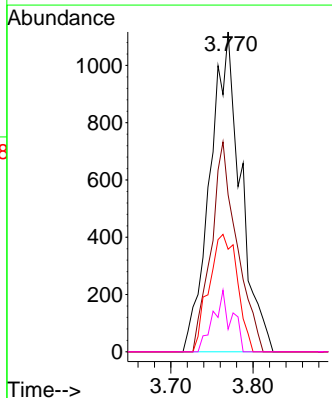
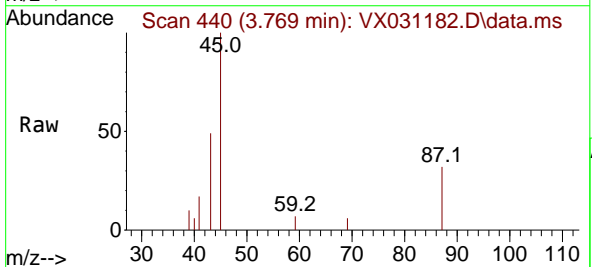
Instrument : MSVOA_X
 ClientSampleId : MW-44

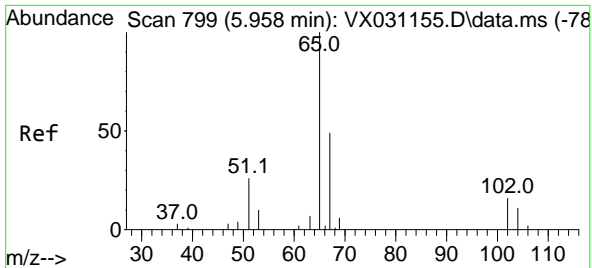
Tgt Ion: 73 Resp: 19561
 Ion Ratio Lower Upper
 73 100
 57 17.8 19.0 28.6#



#22
 Diisopropyl ether
 Concen: 0.767 ug/l
 RT: 3.769 min Scan# 440
 Delta R.T. 0.012 min
 Lab File: VX031182.D
 Acq: 08 Sep 2022 00:16

Tgt Ion: 45 Resp: 2894
 Ion Ratio Lower Upper
 45 100
 43 49.1 65.4 98.0#
 87 32.1 22.3 33.5
 59 7.1 9.0 13.4#

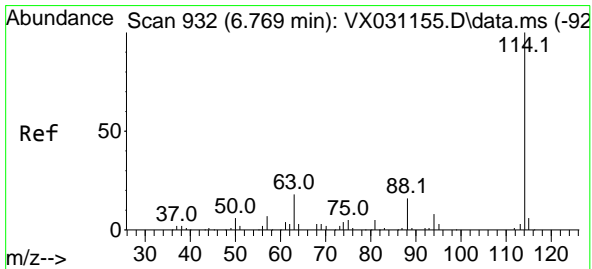
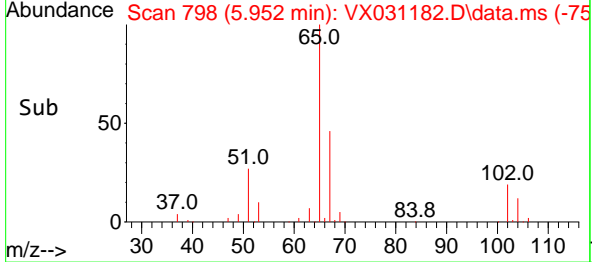
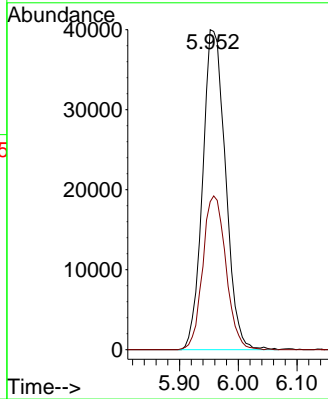
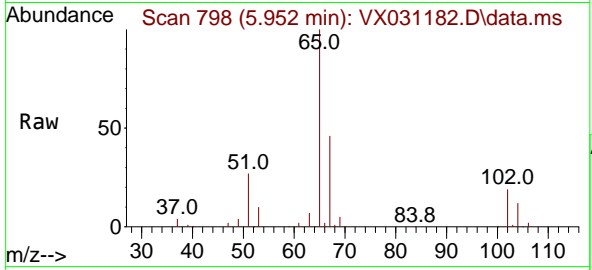




#33
 1,2-Dichloroethane-d4
 Concen: 57.612 ug/l
 RT: 5.952 min Scan# 798
 Delta R.T. -0.006 min
 Lab File: VX031182.D
 Acq: 08 Sep 2022 00:16

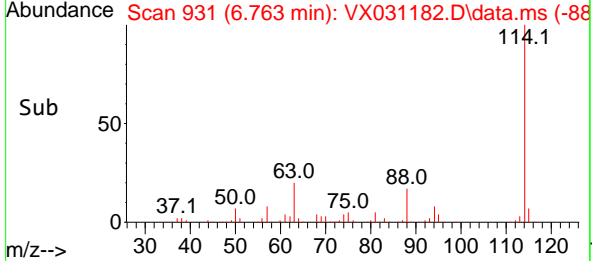
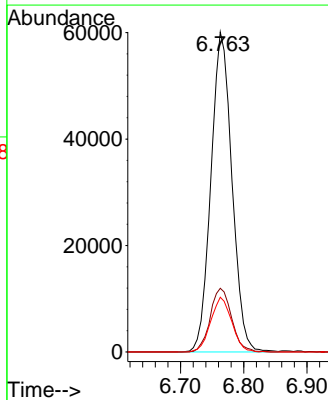
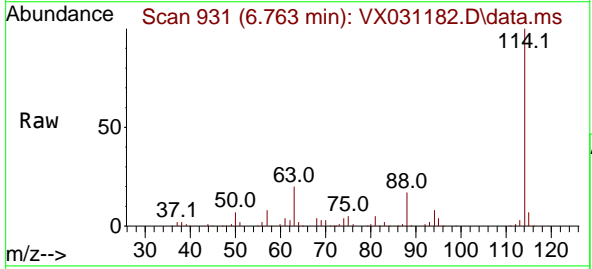
Instrument : MSVOA_X
 ClientSampleId : MW-44

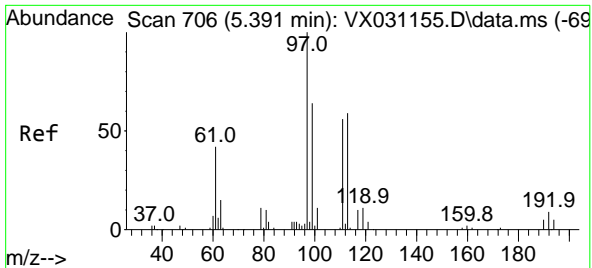
Tgt Ion: 65 Resp: 108051
 Ion Ratio Lower Upper
 65 100
 67 48.8 0.0 109.6



#34
 1,4-Difluorobenzene
 Concen: 50.000 ug/l
 RT: 6.763 min Scan# 931
 Delta R.T. -0.006 min
 Lab File: VX031182.D
 Acq: 08 Sep 2022 00:16

Tgt Ion: 114 Resp: 138414
 Ion Ratio Lower Upper
 114 100
 63 19.9 0.0 38.4
 88 17.1 0.0 31.8

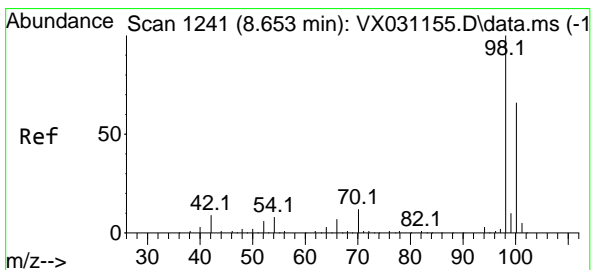
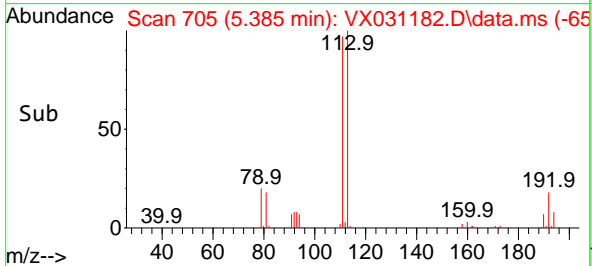
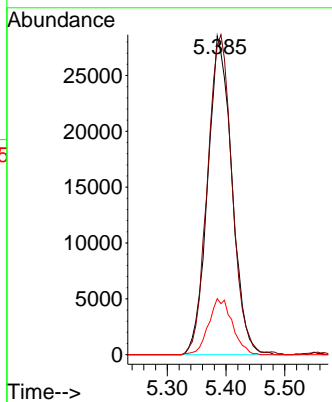
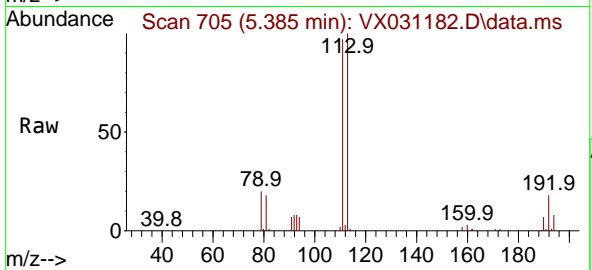




#35
 Dibromofluoromethane
 Concen: 54.175 ug/l
 RT: 5.385 min Scan# 705
 Delta R.T. -0.006 min
 Lab File: VX031182.D
 Acq: 08 Sep 2022 00:16

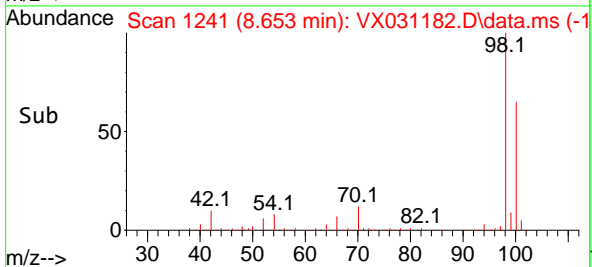
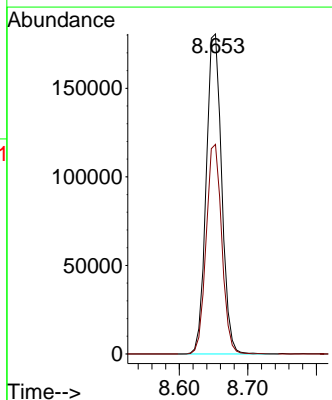
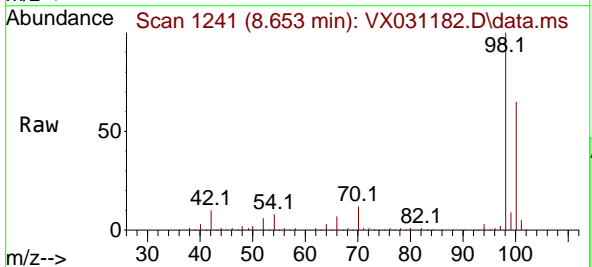
Instrument : MSVOA_X
 ClientSampleId : MW-44

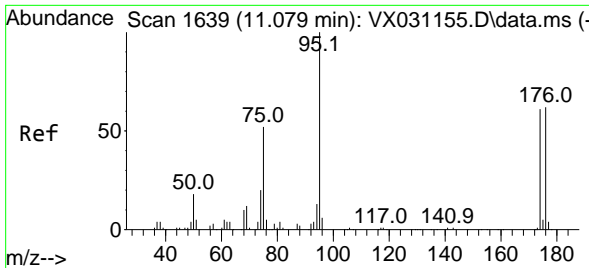
Tgt Ion	Resp	Lower	Upper
113	81715		
113	100		
111	101.8	83.2	124.8
192	17.3	14.8	22.2



#50
 Toluene-d8
 Concen: 51.783 ug/l
 RT: 8.653 min Scan# 1241
 Delta R.T. -0.000 min
 Lab File: VX031182.D
 Acq: 08 Sep 2022 00:16

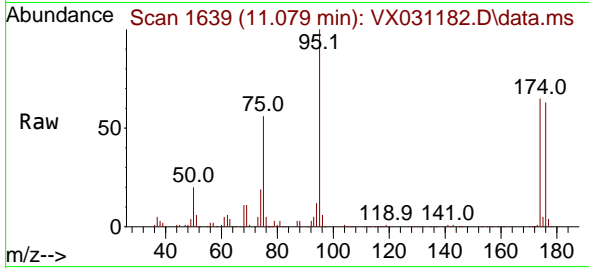
Tgt Ion	Resp	Lower	Upper
98	283779		
98	100		
100	66.0	52.3	78.5



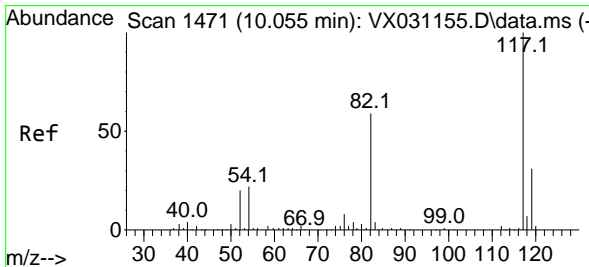
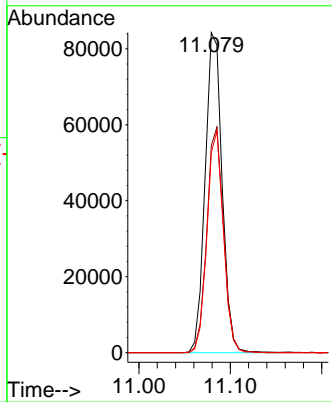
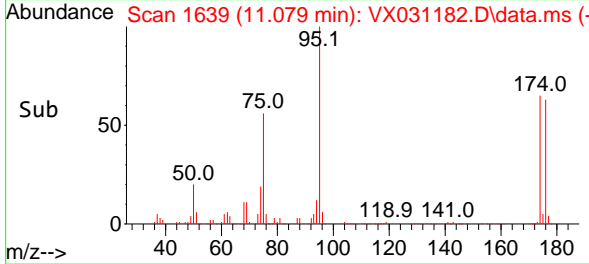


#62
 4-Bromofluorobenzene
 Concen: 53.994 ug/l
 RT: 11.079 min Scan# 1639
 Delta R.T. -0.000 min
 Lab File: VX031182.D
 Acq: 08 Sep 2022 00:16

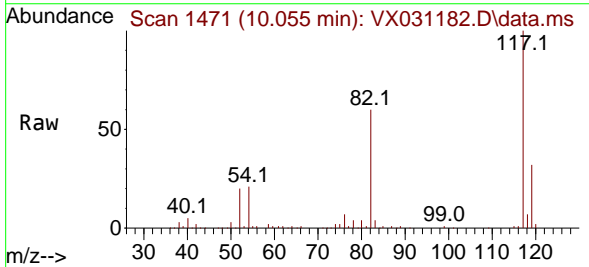
Instrument : MSVOA_X
 ClientSampleId : MW-44



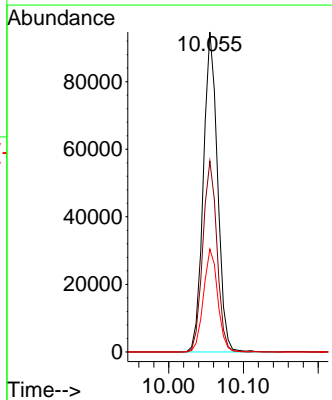
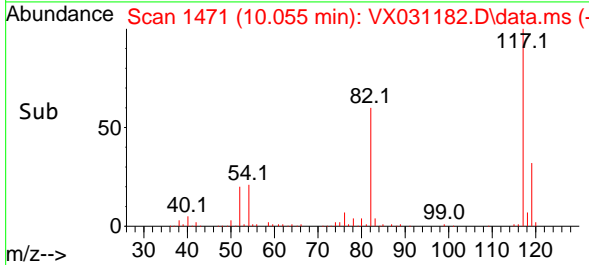
Tgt Ion: 95 Resp: 108435
 Ion Ratio Lower Upper
 95 100
 174 69.3 0.0 149.0
 176 66.7 0.0 146.0

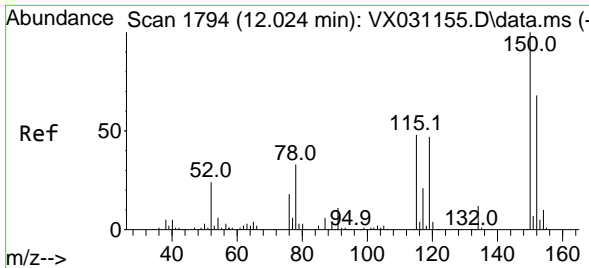


#63
 Chlorobenzene-d5
 Concen: 50.000 ug/l
 RT: 10.055 min Scan# 1471
 Delta R.T. -0.000 min
 Lab File: VX031182.D
 Acq: 08 Sep 2022 00:16



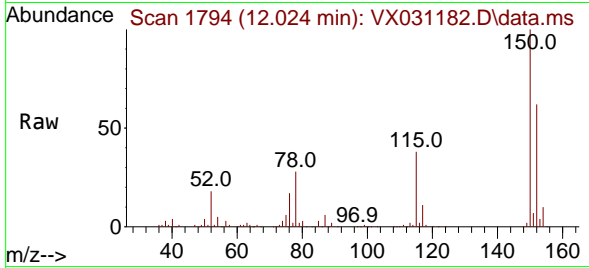
Tgt Ion: 117 Resp: 124915
 Ion Ratio Lower Upper
 117 100
 82 59.6 42.7 64.1
 119 32.1 25.4 38.2



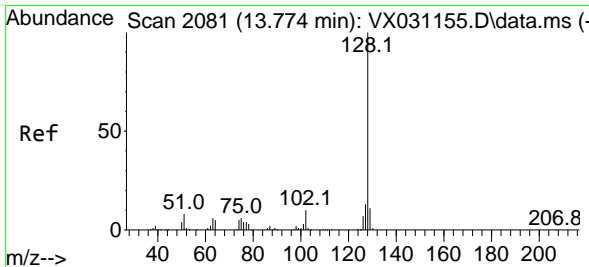
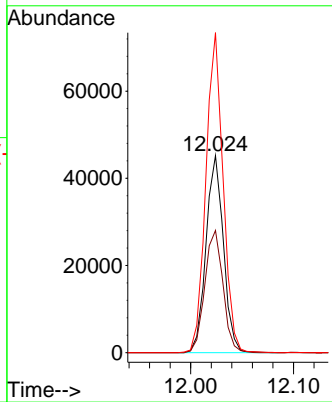
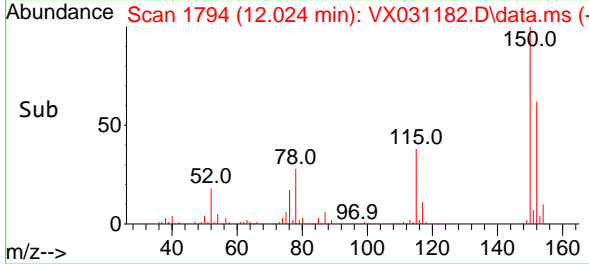


#72
 1,4-Dichlorobenzene-d4
 Concen: 50.000 ug/l
 RT: 12.024 min Scan# 11
 Delta R.T. -0.000 min
 Lab File: VX031182.D
 Acq: 08 Sep 2022 00:16

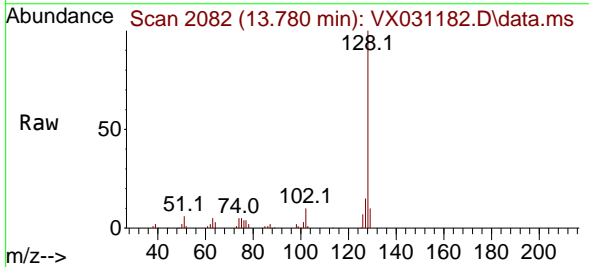
Instrument :
 MSVOA_X
 ClientSampleId :
 MW-44



Tgt Ion:152 Resp: 53337
 Ion Ratio Lower Upper
 152 100
 115 64.7 40.5 121.5
 150 160.3 0.0 347.0



#95
 Naphthalene
 Concen: 7.605 ug/l
 RT: 13.780 min Scan# 2082
 Delta R.T. 0.006 min
 Lab File: VX031182.D
 Acq: 08 Sep 2022 00:16



Tgt Ion:128 Resp: 31963
 Ion Ratio Lower Upper
 128 100
 127 12.9 10.2 15.2
 129 10.5 8.6 13.0

