

Data Path : Z:\voasrv\HPCHEM1\MSVOA\_X\Data\VX090722\  
 Data File : VX031179.D  
 Acq On : 07 Sep 2022 23:06  
 Operator : JC/MD  
 Sample : N4357-20RE  
 Misc : 5.0mL/MSVOA\_X/WATER  
 ALS Vial : 32 Sample Multiplier: 1

Instrument :  
 MSVOA\_X  
 ClientSampleId :  
 DUP10-20220823RE

Integration Parameters: RTEINT.P

Integrator: RTE  
 Smoothing : ON Filtering: 5  
 Sampling : 1 Min Area: 3 % of largest Peak  
 Start Thrs: 0.2 Max Peaks: 100  
 Stop Thrs : 0 Peak Location: TOP

If leading or trailing edge < 100 prefer < Baseline drop else tangent >  
 Peak separation: 5

Method : Z:\voasrv\HPCHEM1\MSVOA\_X\Method\82X090722W.M  
 Title : SW846 8260

Signal : TIC: VX031179.D\data.ms

peak #	R.T. min	first scan	max scan	last scan	PK TY	peak height	corr. area	corr. % max.	% of total
1	5.391	693	706	718	rBV2	90539	259847	36.18%	8.627%
2	5.556	721	733	747	rVB	91147	255795	35.62%	8.493%
3	5.958	788	799	814	rVB	101847	262977	36.62%	8.731%
4	6.763	922	931	944	rBV	141816	324125	45.13%	10.761%
5	7.129	984	991	999	rBB3	5732	10739	1.50%	0.357%
6	8.653	1234	1241	1251	rBV	447480	718157	100.00%	23.844%
7	10.055	1465	1471	1479	rBV	286275	376588	52.44%	12.503%
8	11.085	1634	1640	1650	rBV	358312	474944	66.13%	15.769%
9	12.024	1788	1794	1802	rBV	259411	328752	45.78%	10.915%

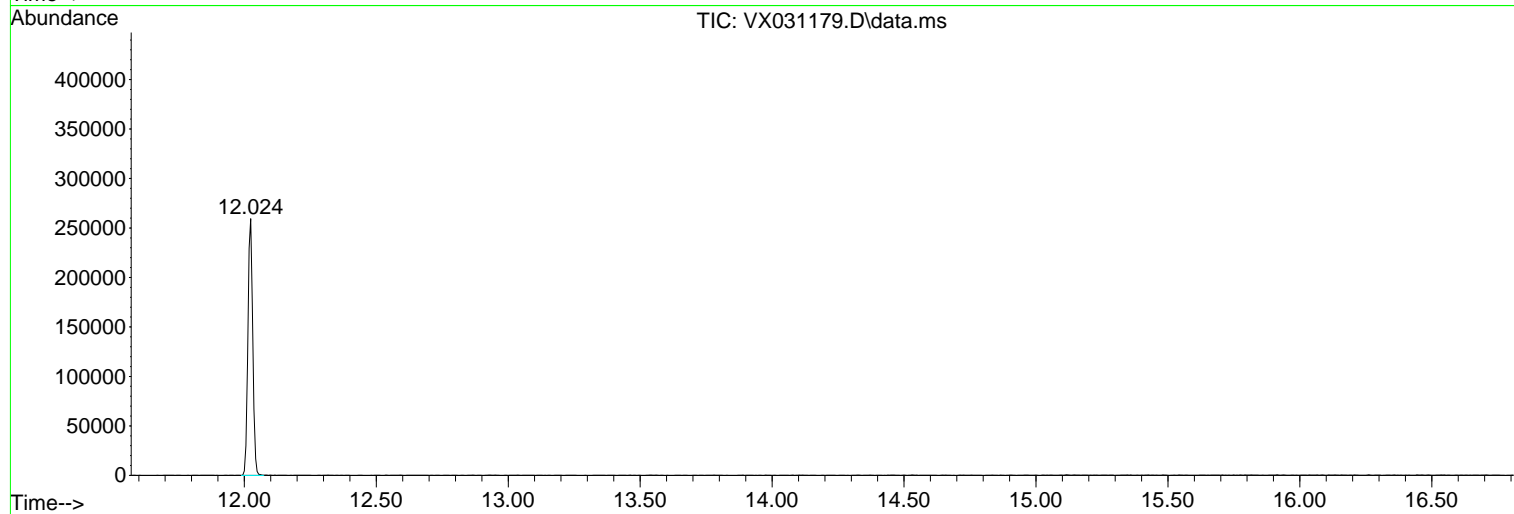
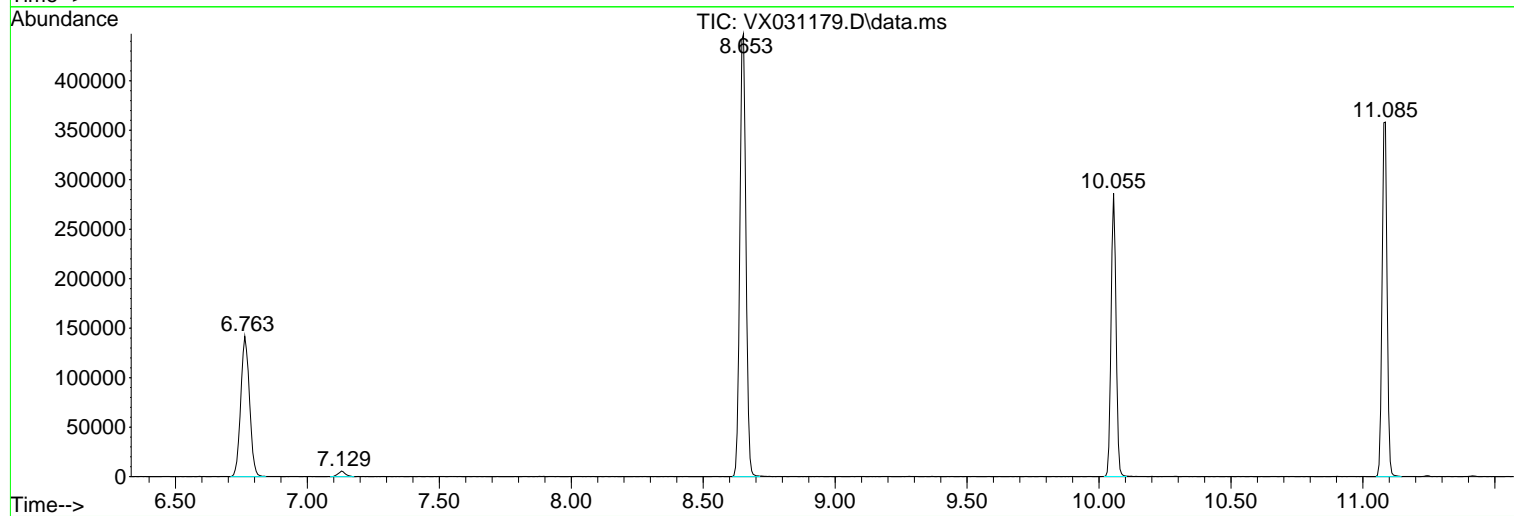
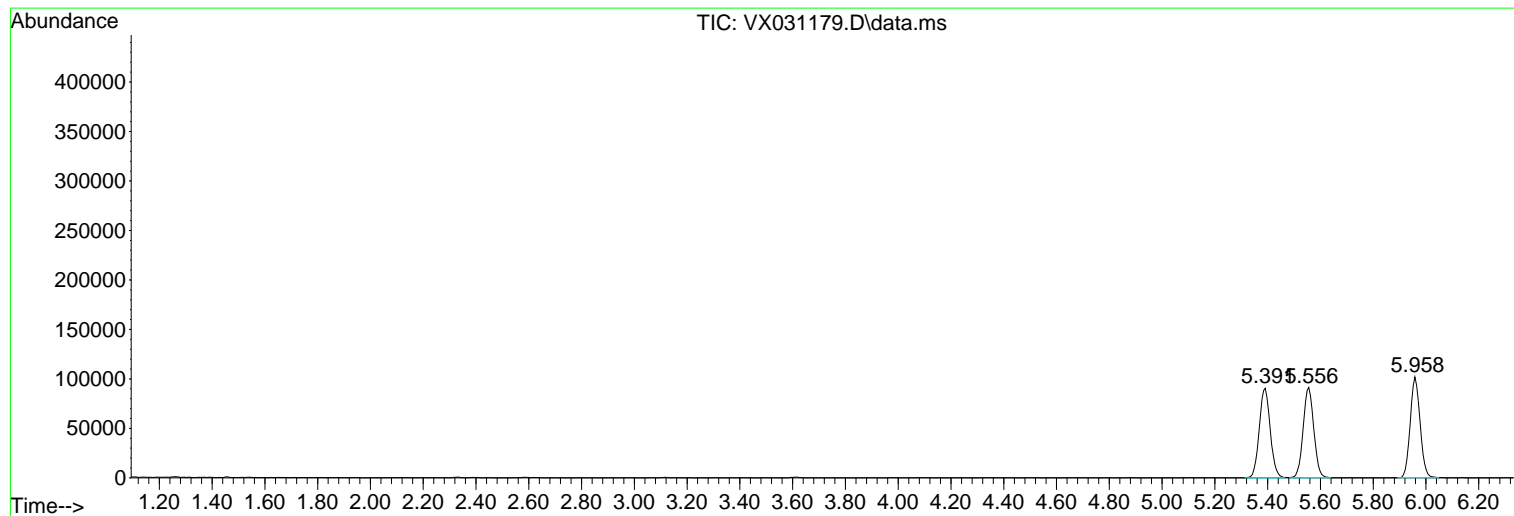
Sum of corrected areas: 3011924

Data Path : Z:\voasrv\HPCHEM1\MSVOA\_X\Data\VX090722\  
Data File : VX031179.D  
Acq On : 07 Sep 2022 23:06  
Operator : JC/MD  
Sample : N4357-20RE  
Misc : 5.0mL/MSVOA\_X/WATER  
ALS Vial : 32 Sample Multiplier: 1

Instrument :  
MSVOA\_X  
ClientSampleId :  
DUP10-20220823RE

Quant Method : Z:\voasrv\HPCHEM1\MSVOA\_X\Method\82X090722W.M  
Quant Title : SW846 8260

TIC Library : C:\Database\NIST20.L  
TIC Integration Parameters: LSCINT.P



Library Search Compound Report

Data Path : Z:\voasrv\HPCHEM1\MSVOA\_X\Data\VX090722\  
Data File : VX031179.D  
Acq On : 07 Sep 2022 23:06  
Operator : JC/MD  
Sample : N4357-20RE  
Misc : 5.0mL/MSVOA\_X/WATER  
ALS Vial : 32 Sample Multiplier: 1

Instrument :  
MSVOA\_X  
ClientSampleId :  
DUP10-20220823RE

Quant Method : Z:\voasrv\HPCHEM1\MSVOA\_X\Method\82X090722W.M  
Quant Title : SW846 8260

TIC Library : C:\Database\NIST20.L  
TIC Integration Parameters: LSCINT.P

No Library Search Compounds Detected

\*\*\*\*\*

Data Path : Z:\voasrv\HPCHEM1\MSVOA\_X\Data\VX090722\  
Data File : VX031179.D  
Acq On : 07 Sep 2022 23:06  
Operator : JC/MD  
Sample : N4357-20RE  
Misc : 5.0mL/MSVOA\_X/WATER  
ALS Vial : 32 Sample Multiplier: 1

Instrument :  
MSVOA\_X  
ClientSampleId :  
DUP10-20220823RE

Quant Method : Z:\voasrv\HPCHEM1\MSVOA\_X\Method\82X090722W.M  
Quant Title : SW846 8260

TIC Library : C:\Database\NIST20.L  
TIC Integration Parameters: LSCINT.P

TIC Top Hit name	RT	EstConc	Units	Response	--Internal Standard--		
					#	RT	Resp Conc

---