

Data Path : Z:\voasrv\HPCHEM1\MSVOA_X\Data\VX090723\
 Data File : VX037590.D
 Acq On : 07 Sep 2023 19:57
 Operator : JC/MD
 Sample : 04327-02
 Misc : 5.0mL/MSVOA_X/WATER
 ALS Vial : 22 Sample Multiplier: 1

Instrument :
 MSVOA_X
 ClientSampleId :

Quant Time: Sep 08 00:50:11 2023
 Quant Method : Z:\voasrv\HPCHEM1\MSVOA_X\Method\82X081723W.M
 Quant Title : SW846 8260
 QLast Update : Fri Aug 18 09:30:38 2023
 Response via : Initial Calibration

Compound	R.T.	QIon	Response	Conc	Units	Dev(Min)

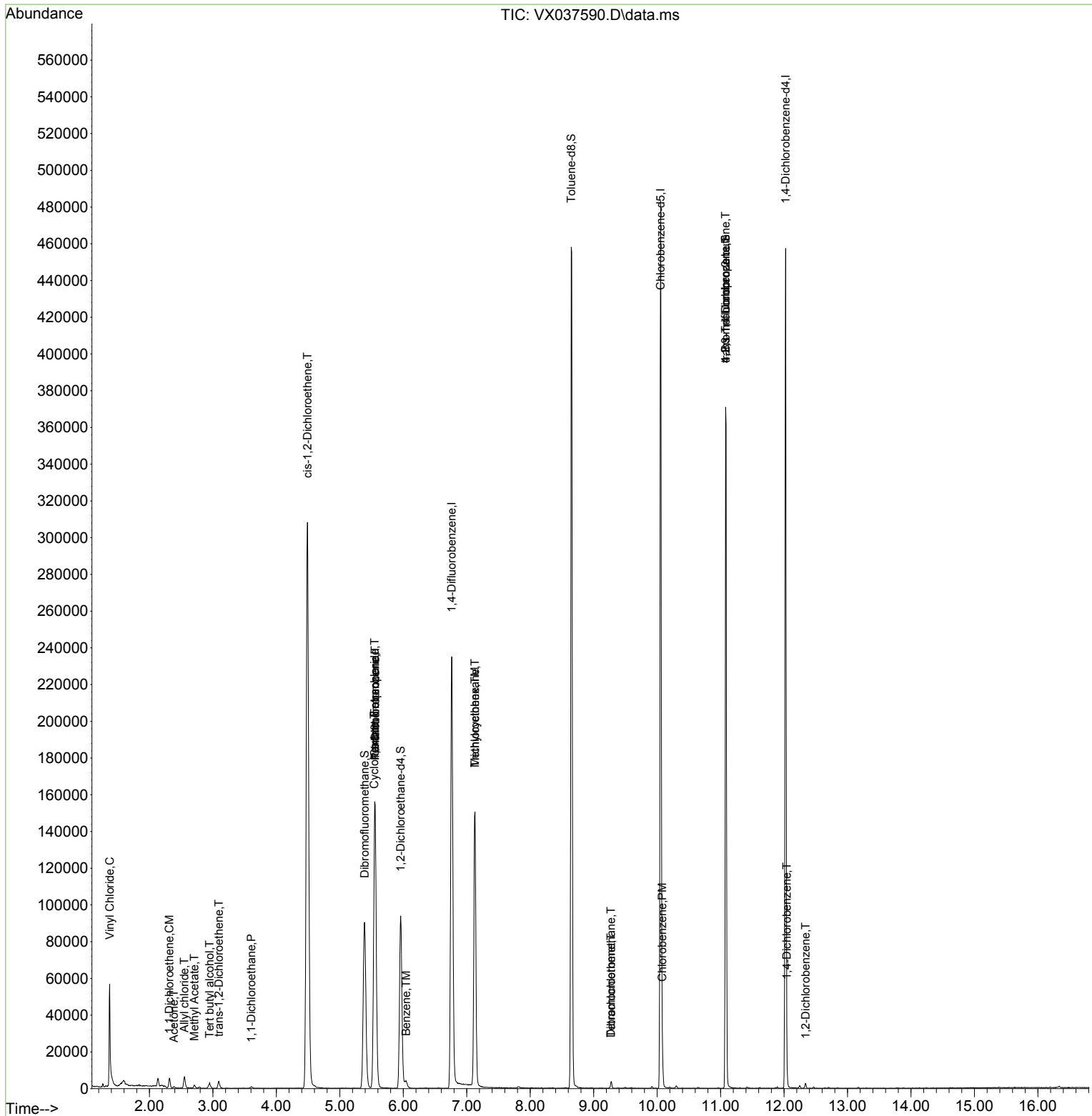
Internal Standards						
1) Pentafluorobenzene	5.556	168	150446	50.000	ug/l	# 0.00
34) 1,4-Difluorobenzene	6.763	114	254847	50.000	ug/l	0.00
63) Chlorobenzene-d5	10.055	117	228720	50.000	ug/l	0.00
72) 1,4-Dichlorobenzene-d4	12.024	152	98454	50.000	ug/l	0.00
System Monitoring Compounds						
33) 1,2-Dichloroethane-d4	5.958	65	90588	41.766	ug/l	0.00
Spiked Amount	50.000	Range	78 - 117	Recovery	=	83.540%
35) Dibromofluoromethane	5.391	113	83240	49.319	ug/l	0.00
Spiked Amount	50.000	Range	75 - 124	Recovery	=	98.640%
50) Toluene-d8	8.647	98	289334	47.259	ug/l	0.00
Spiked Amount	50.000	Range	92 - 112	Recovery	=	94.520%
62) 4-Bromofluorobenzene	11.079	95	108412	45.060	ug/l	0.00
Spiked Amount	50.000	Range	83 - 123	Recovery	=	90.120%
Target Compounds						
						Qvalue
4) Vinyl Chloride	1.374	62	43166	25.938	ug/l	98
11) Tert butyl alcohol	2.947	59	1487	2.923	ug/l	# 78
12) 1,1-Dichloroethene	2.313	96	1766	1.140	ug/l	# 96
14) Allyl chloride	2.550	41	627	0.262	ug/l	# 65
16) Acetone	2.386	43	1048	1.235	ug/l	100
18) Methyl Acetate	2.709	43	2116	0.662	ug/l	96
21) trans-1,2-Dichloroethene	3.093	96	1759	0.999	ug/l	# 72
24) 1,1-Dichloroethane	3.605	63	1209	0.392	ug/l	# 83
27) cis-1,2-Dichloroethene	4.489	96	211994	102.143	ug/l	77
31) Cyclohexane	5.544	56	2492	1.022	ug/l	# 1
36) 1,1-Dichloropropene	5.556	75	10787	4.499	ug/l	# 51
38) Carbon Tetrachloride	5.550	117	15445	5.929	ug/l	# 16
39) Methylcyclohexane	7.129	83	739	0.293	ug/l	# 1
40) Benzene	6.044	78	5120	0.744	ug/l	91
44) Trichloroethene	7.129	130	63105	32.361	ug/l	97
60) Dibromochloromethane	9.275	129	722	0.367	ug/l	# 11
64) Tetrachloroethene	9.275	164	747	0.448	ug/l	84
65) Chlorobenzene	10.080	112	8528	1.764	ug/l	96
76) 1,2,3-Trichloropropane	11.079	75	51500	24.562	ug/l	# 38
81) trans-1,4-Dichloro-2-b...	11.079	75	51500	68.602	ug/l	# 5
88) 1,4-Dichlorobenzene	12.043	146	2986	0.883	ug/l	# 67
91) 1,2-Dichlorobenzene	12.341	146	1048	0.327	ug/l	92

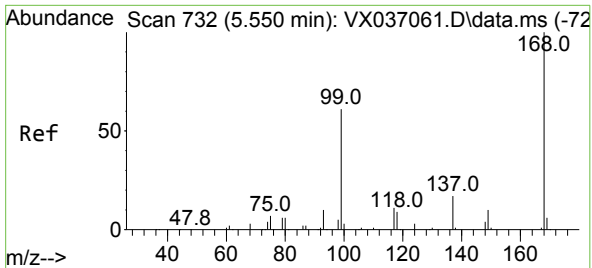
(#) = qualifier out of range (m) = manual integration (+) = signals summed

Data Path : Z:\voasrv\HPCHEM1\MSVOA_X\Data\VX090723\
 Data File : VX037590.D
 Acq On : 07 Sep 2023 19:57
 Operator : JC/MD
 Sample : 04327-02
 Misc : 5.0mL/MSVOA_X/WATER
 ALS Vial : 22 Sample Multiplier: 1

Instrument :
 MSVOA_X
 ClientSampleId :

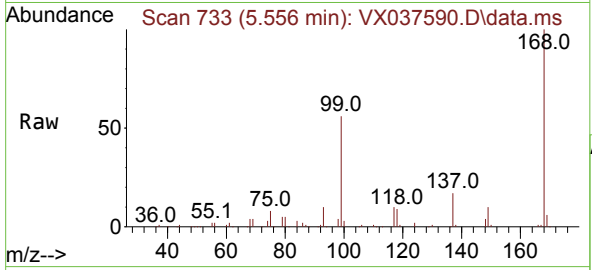
Quant Time: Sep 08 00:50:11 2023
 Quant Method : Z:\voasrv\HPCHEM1\MSVOA_X\Method\82X081723W.M
 Quant Title : SW846 8260
 QLast Update : Fri Aug 18 09:30:38 2023
 Response via : Initial Calibration



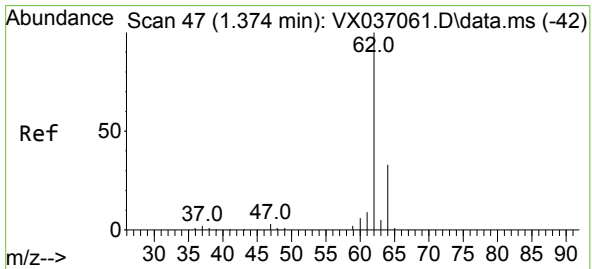
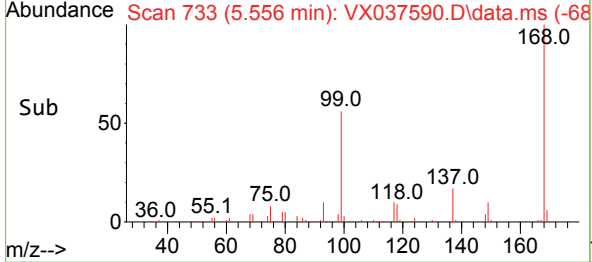
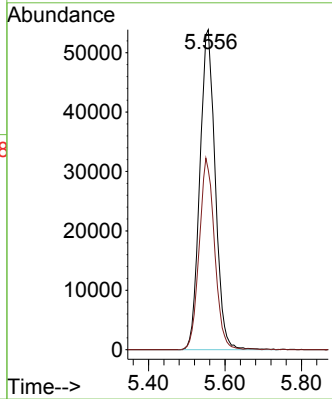


#1
 Pentafluorobenzene
 Concen: 50.000 ug/l
 RT: 5.556 min Scan# 71
 Delta R.T. 0.006 min
 Lab File: VX037590.D
 Acq: 07 Sep 2023 19:57

Instrument : MSVOA_X
 ClientSampleId :

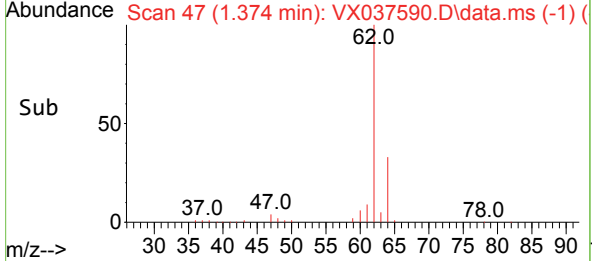
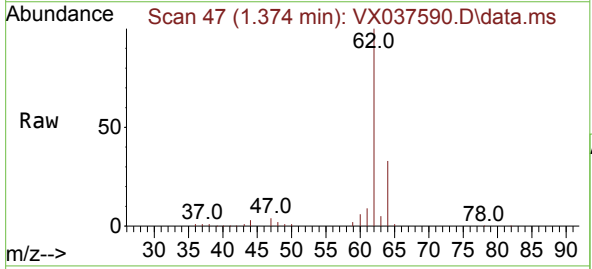
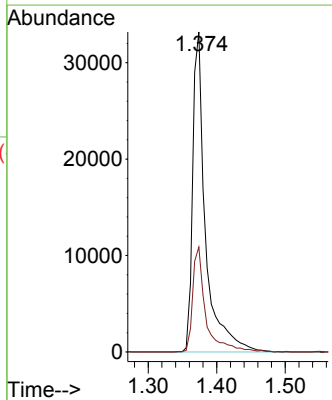


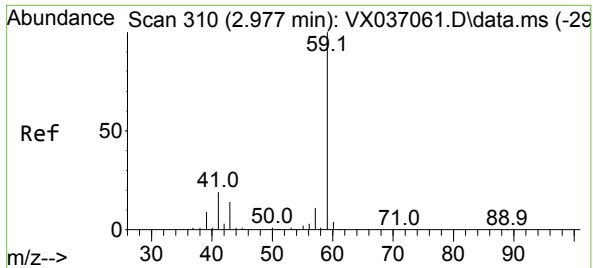
Tgt Ion:168 Resp: 150446
 Ion Ratio Lower Upper
 168 100
 99 56.2 56.6 85.0#



#4
 Vinyl Chloride
 Concen: 25.938 ug/l
 RT: 1.374 min Scan# 47
 Delta R.T. 0.000 min
 Lab File: VX037590.D
 Acq: 07 Sep 2023 19:57

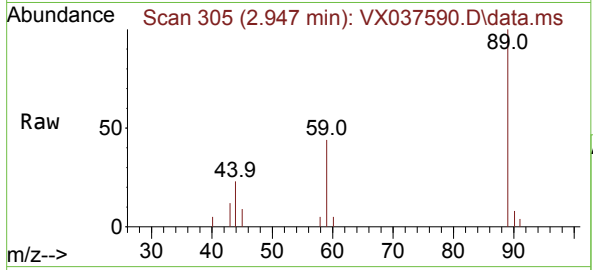
Tgt Ion: 62 Resp: 43166
 Ion Ratio Lower Upper
 62 100
 64 32.6 25.4 38.0



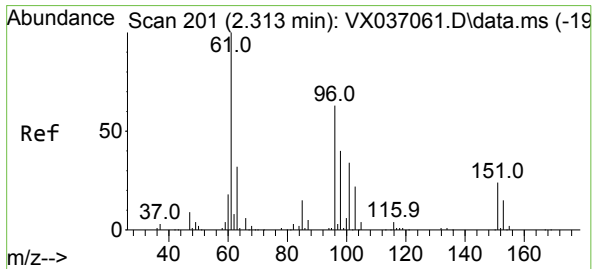
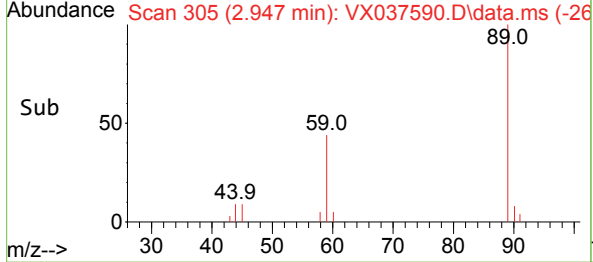
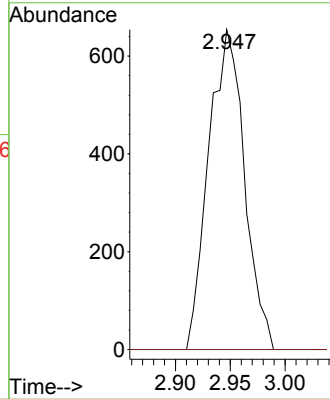


#11
 Tert butyl alcohol
 Concen: 2.923 ug/l
 RT: 2.947 min Scan# 305
 Delta R.T. -0.030 min
 Lab File: VX037590.D
 Acq: 07 Sep 2023 19:57

Instrument : MSVOA_X
 ClientSampleId :

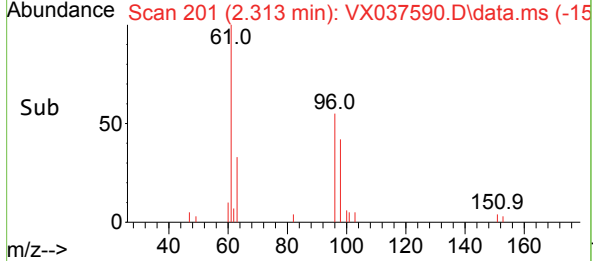
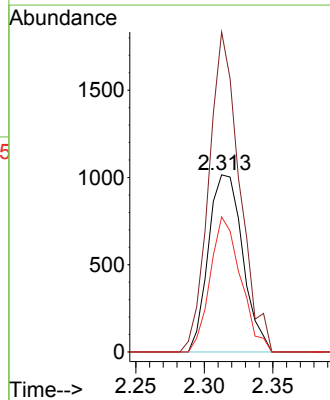
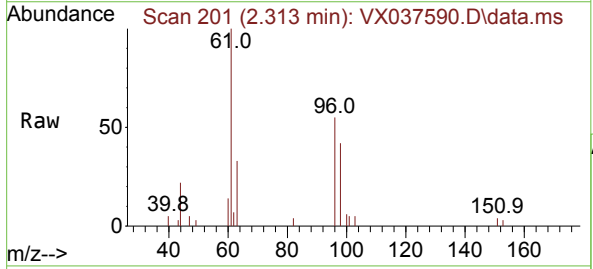


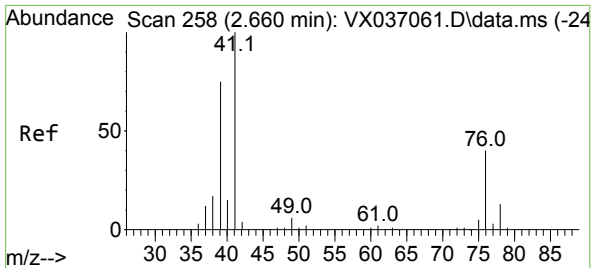
Tgt Ion: 59 Resp: 1487
 Ion Ratio Lower Upper
 59 100
 57 0.0 6.0 9.0#



#12
 1,1-Dichloroethene
 Concen: 1.140 ug/l
 RT: 2.313 min Scan# 201
 Delta R.T. 0.000 min
 Lab File: VX037590.D
 Acq: 07 Sep 2023 19:57

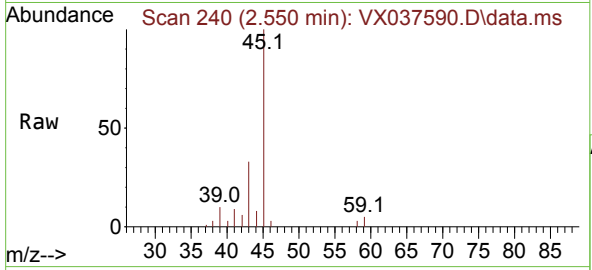
Tgt Ion: 96 Resp: 1766
 Ion Ratio Lower Upper
 96 100
 61 180.7 144.6 216.8
 98 76.3 50.4 75.6#





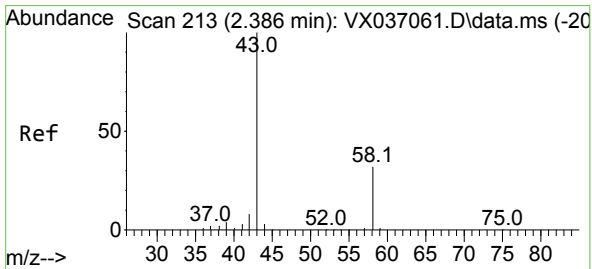
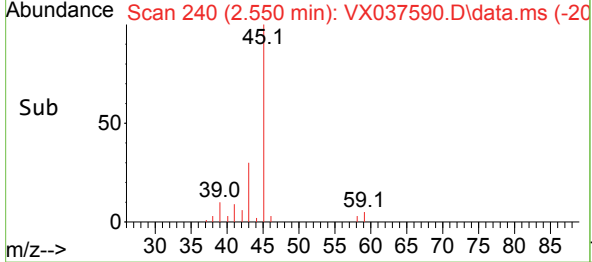
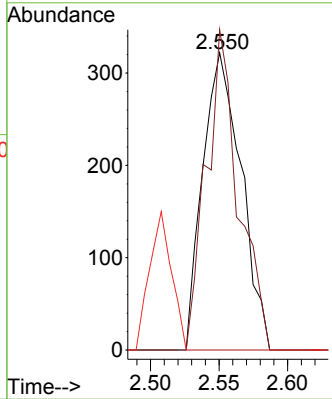
#14
 Allyl chloride
 Concen: 0.262 ug/l
 RT: 2.550 min Scan# 24
 Delta R.T. -0.110 min
 Lab File: VX037590.D
 Acq: 07 Sep 2023 19:57

Instrument : MSVOA_X
 ClientSampleId :



Tgt Ion: 41 Resp: 627

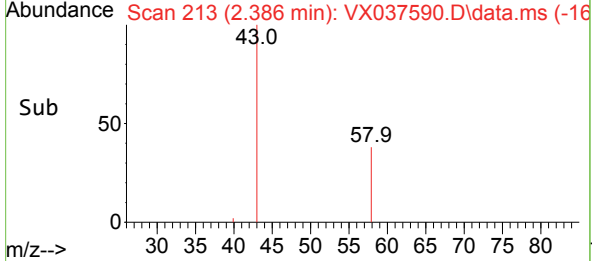
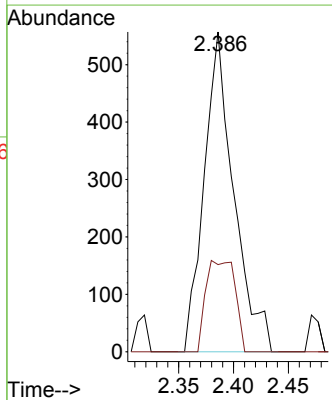
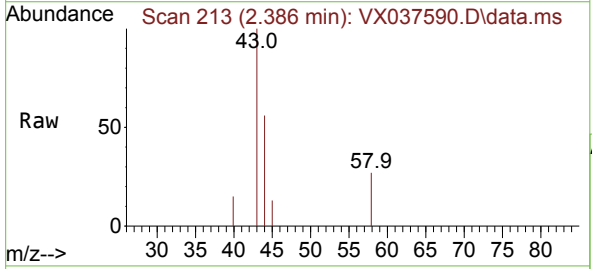
Ion	Ratio	Lower	Upper
41	100		
39	90.7	55.8	83.6#
76	0.0	24.3	36.5#

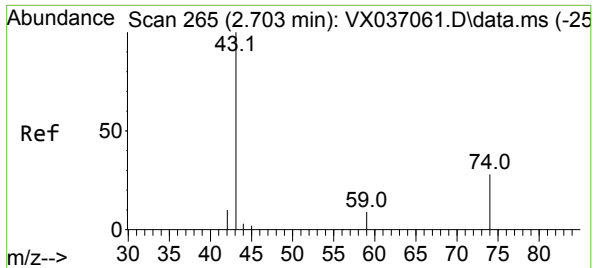


#16
 Acetone
 Concen: 1.235 ug/l
 RT: 2.386 min Scan# 213
 Delta R.T. 0.000 min
 Lab File: VX037590.D
 Acq: 07 Sep 2023 19:57

Tgt Ion: 43 Resp: 1048

Ion	Ratio	Lower	Upper
43	100		
58	27.3	21.9	32.9

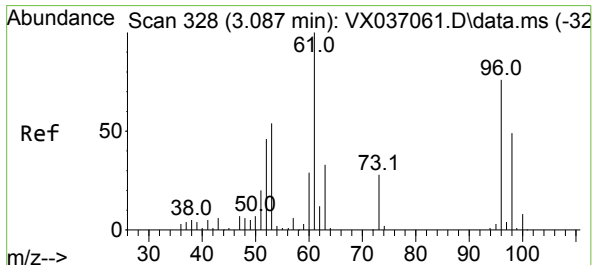
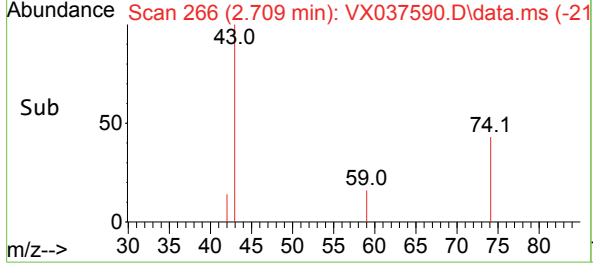
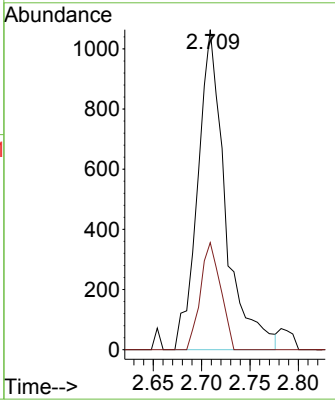
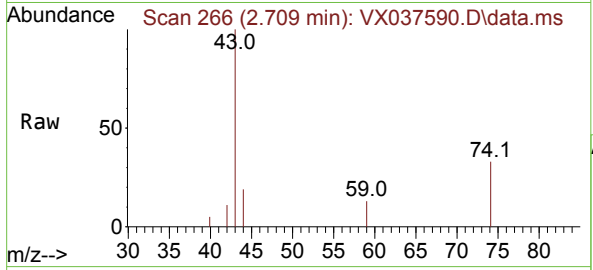




#18
Methyl Acetate
Concen: 0.662 ug/l
RT: 2.709 min Scan# 201
Delta R.T. 0.006 min
Lab File: VX037590.D
Acq: 07 Sep 2023 19:57

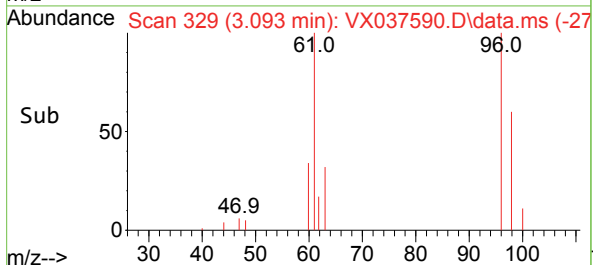
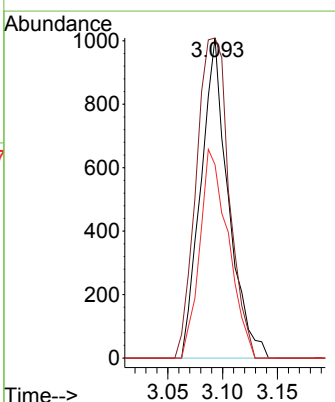
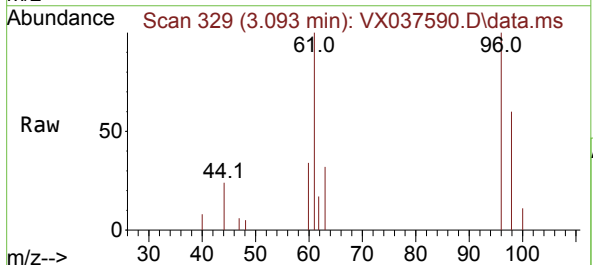
Instrument : MSVOA_X
ClientSampleId :

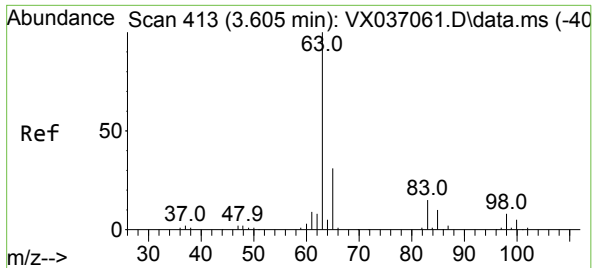
Tgt Ion	Resp	Lower	Upper
43	100		
74	24.4	17.8	26.8



#21
trans-1,2-Dichloroethene
Concen: 0.999 ug/l
RT: 3.093 min Scan# 329
Delta R.T. 0.006 min
Lab File: VX037590.D
Acq: 07 Sep 2023 19:57

Tgt Ion	Resp	Lower	Upper
96	100		
61	100.0	119.2	178.8#
98	60.4	48.7	73.1

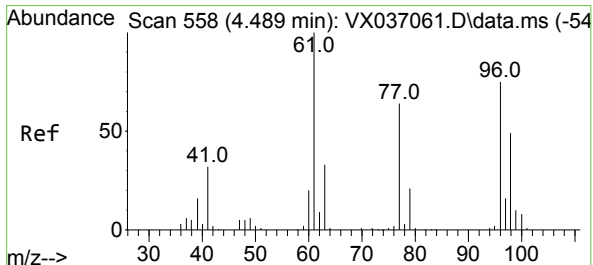
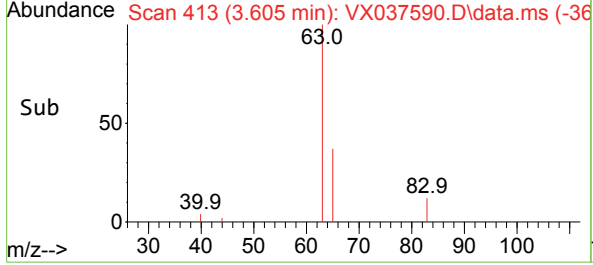
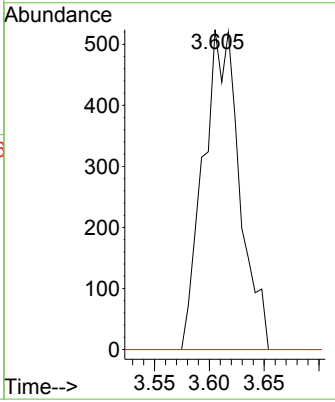
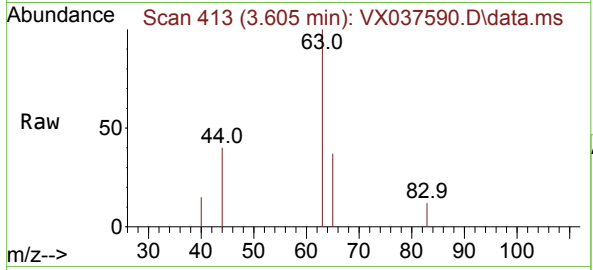




#24
 1,1-Dichloroethane
 Concen: 0.392 ug/l
 RT: 3.605 min Scan# 413
 Delta R.T. 0.000 min
 Lab File: VX037590.D
 Acq: 07 Sep 2023 19:57

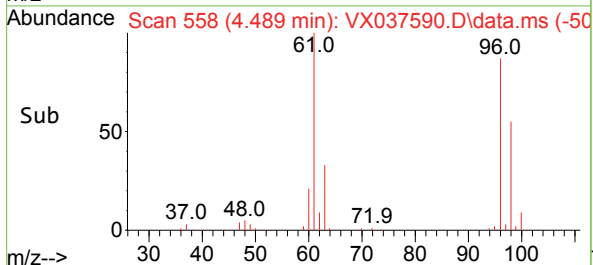
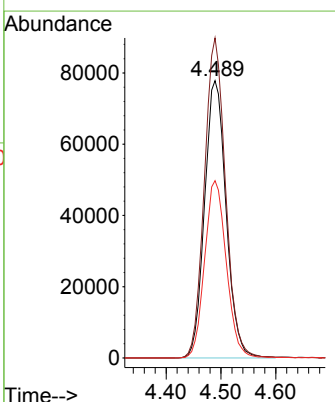
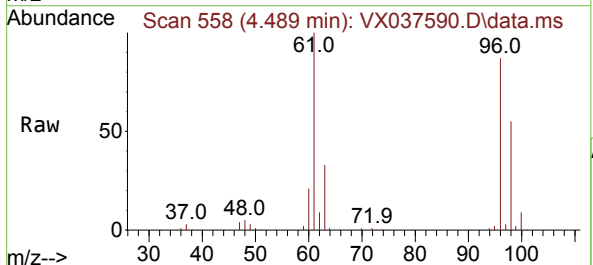
Instrument : MSVOA_X
 ClientSampleId :

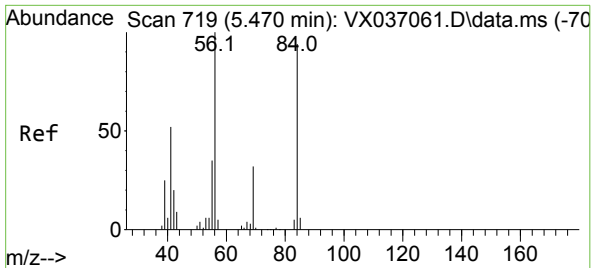
Tgt Ion	Resp	Lower	Upper
63	1209		
98	0.0	3.3	9.8#
100	0.0	2.1	6.5#



#27
 cis-1,2-Dichloroethene
 Concen: 102.143 ug/l
 RT: 4.489 min Scan# 558
 Delta R.T. 0.000 min
 Lab File: VX037590.D
 Acq: 07 Sep 2023 19:57

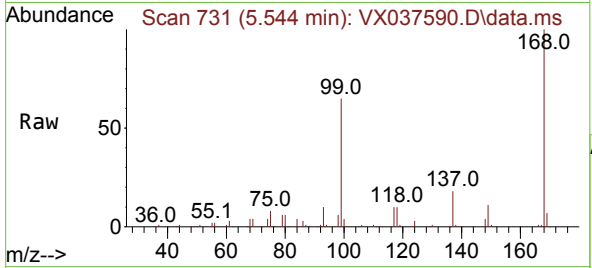
Tgt Ion	Resp	Lower	Upper
96	211994		
61	113.7	0.0	312.2
98	64.2	0.0	129.0



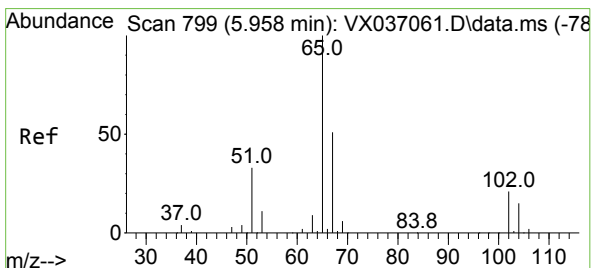
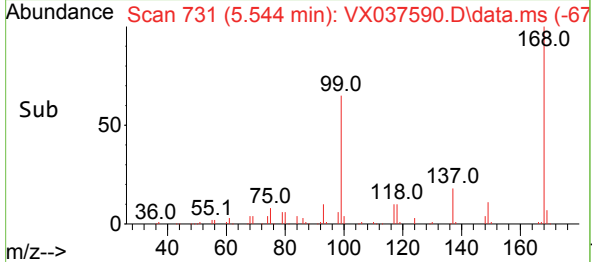
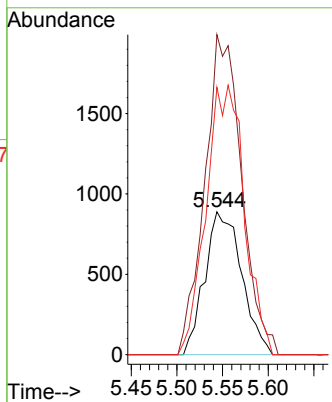


#31
 Cyclohexane
 Concen: 1.022 ug/l
 RT: 5.544 min Scan# 719
 Delta R.T. 0.073 min
 Lab File: VX037590.D
 Acq: 07 Sep 2023 19:57

Instrument : MSVOA_X
 ClientSampleId :

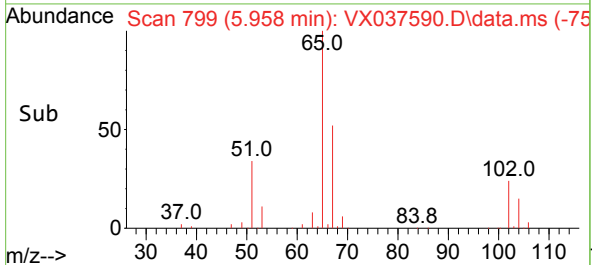
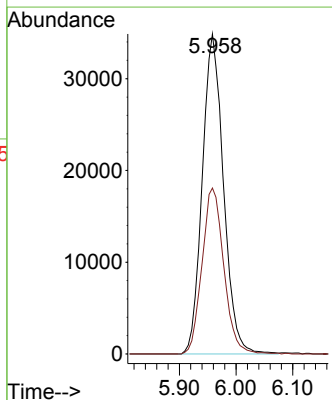
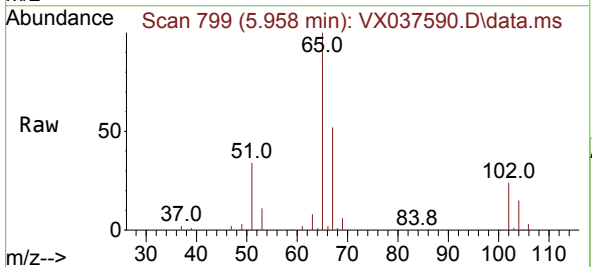


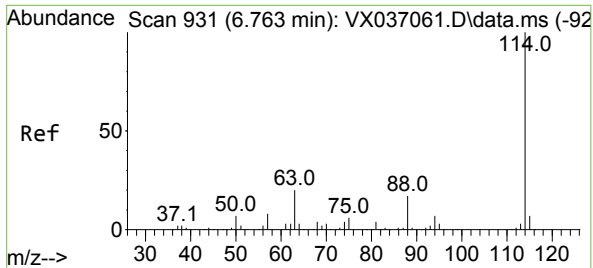
Tgt Ion: 56 Resp: 2492
 Ion Ratio Lower Upper
 56 100
 69 224.0 23.4 35.2#
 84 187.1 65.9 98.9#



#33
 1,2-Dichloroethane-d4
 Concen: 41.766 ug/l
 RT: 5.958 min Scan# 799
 Delta R.T. 0.000 min
 Lab File: VX037590.D
 Acq: 07 Sep 2023 19:57

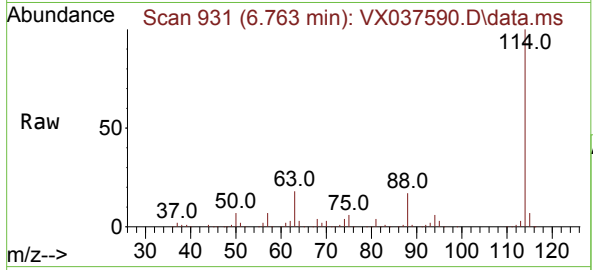
Tgt Ion: 65 Resp: 90588
 Ion Ratio Lower Upper
 65 100
 67 53.3 0.0 100.2





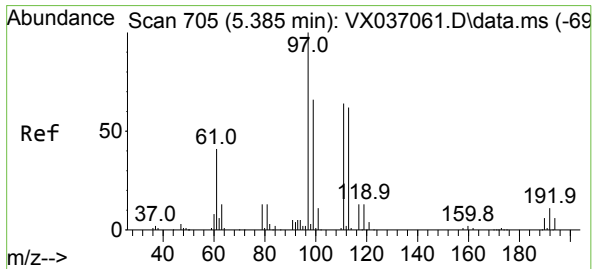
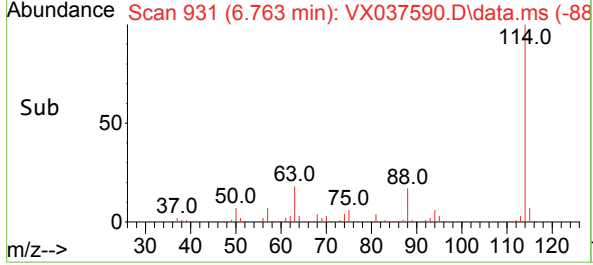
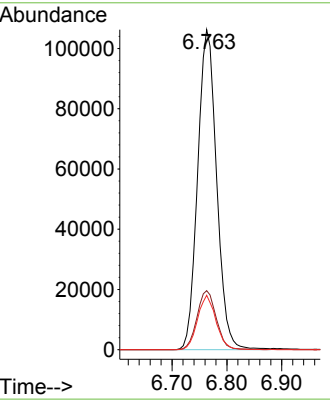
#34
 1,4-Difluorobenzene
 Concen: 50.000 ug/l
 RT: 6.763 min Scan# 91
 Delta R.T. 0.000 min
 Lab File: VX037590.D
 Acq: 07 Sep 2023 19:57

Instrument : MSVOA_X
 ClientSampleId :

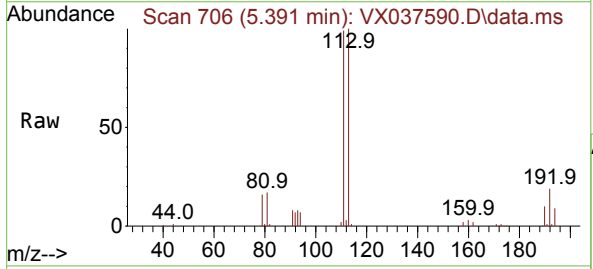


Tgt Ion:114 Resp: 254847

Ion	Ratio	Lower	Upper
114	100		
63	18.5	0.0	45.0
88	17.0	0.0	36.6

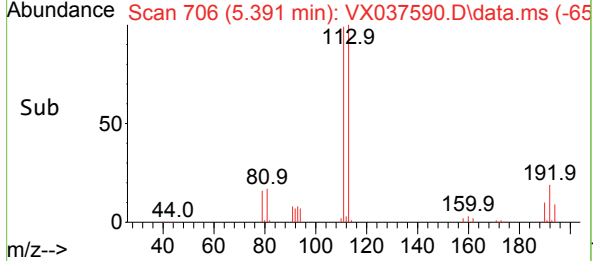
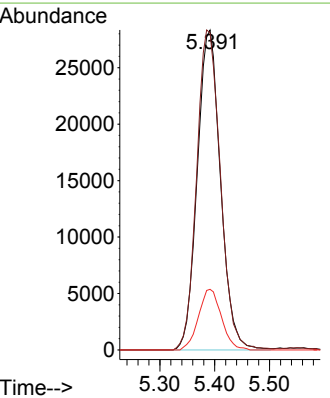


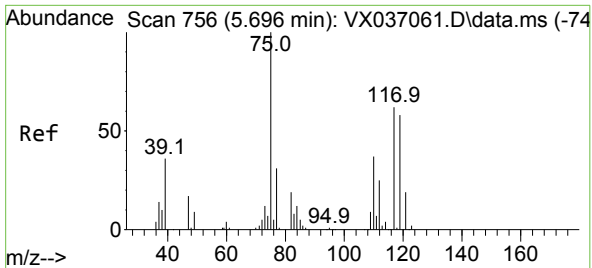
#35
 Dibromofluoromethane
 Concen: 49.319 ug/l
 RT: 5.391 min Scan# 706
 Delta R.T. 0.006 min
 Lab File: VX037590.D
 Acq: 07 Sep 2023 19:57



Tgt Ion:113 Resp: 83240

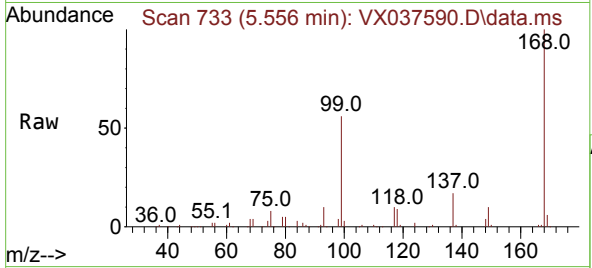
Ion	Ratio	Lower	Upper
113	100		
111	102.1	82.9	124.3
192	18.7	13.3	19.9



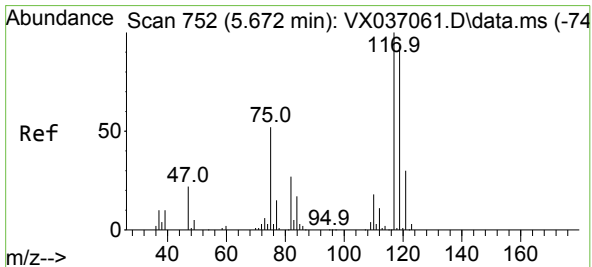
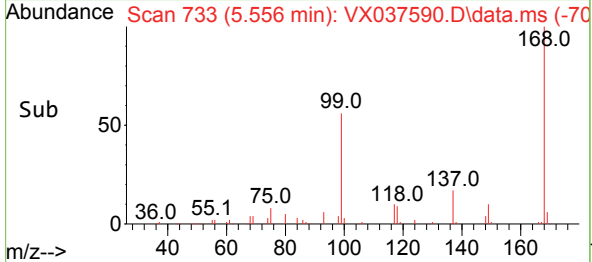
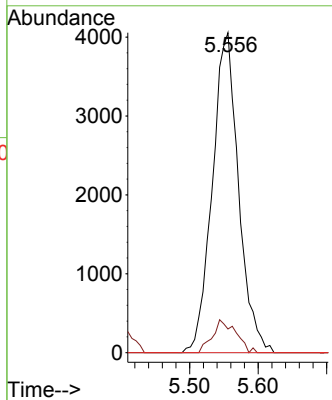


#36
 1,1-Dichloropropene
 Concen: 4.499 ug/l
 RT: 5.556 min Scan# 711
 Delta R.T. -0.140 min
 Lab File: VX037590.D
 Acq: 07 Sep 2023 19:57

Instrument : MSVOA_X
 ClientSampleId :

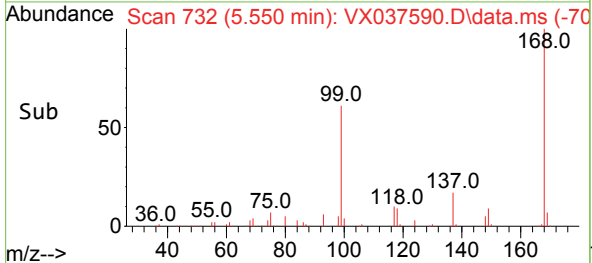
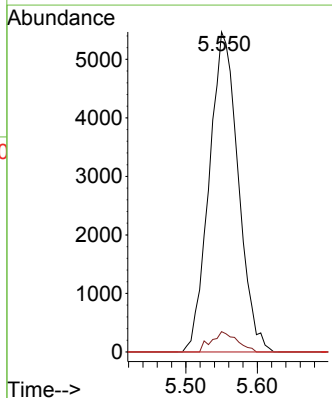
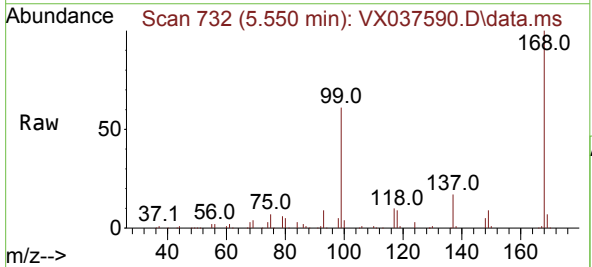


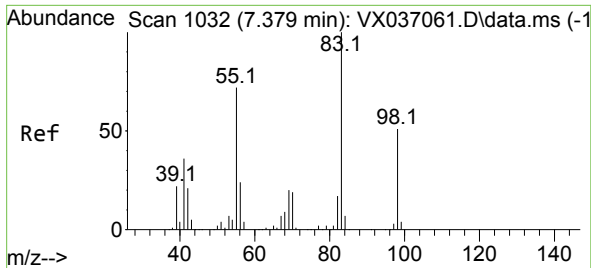
Tgt Ion: 75 Resp: 10787
 Ion Ratio Lower Upper
 75 100
 110 9.2 17.0 50.9#
 77 0.0 24.7 37.1#



#38
 Carbon Tetrachloride
 Concen: 5.929 ug/l
 RT: 5.550 min Scan# 732
 Delta R.T. -0.122 min
 Lab File: VX037590.D
 Acq: 07 Sep 2023 19:57

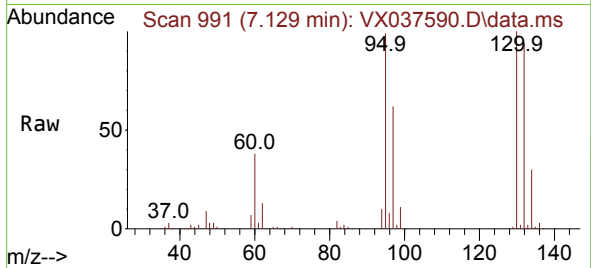
Tgt Ion: 117 Resp: 15445
 Ion Ratio Lower Upper
 117 100
 119 6.3 78.2 117.2#
 121 0.0 24.4 36.6#



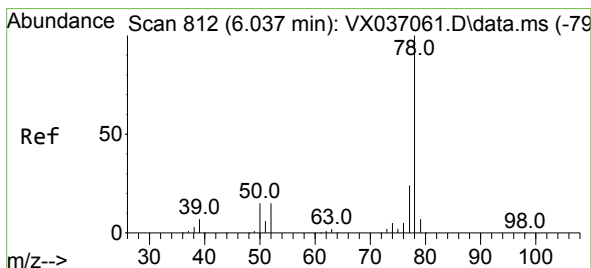
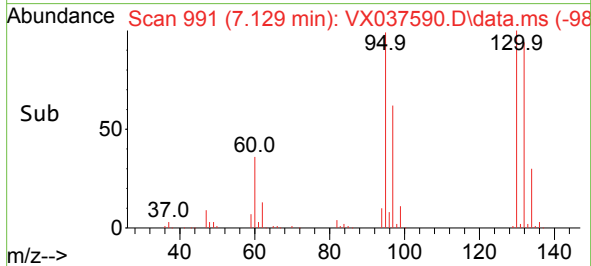
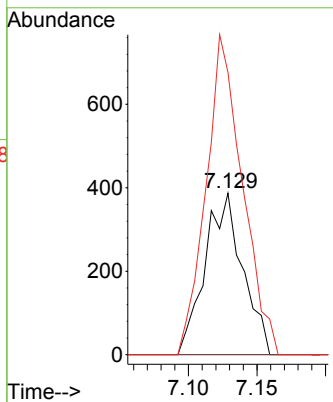


#39
 Methylcyclohexane
 Concen: 0.293 ug/l
 RT: 7.129 min Scan# 91
 Delta R.T. -0.250 min
 Lab File: VX037590.D
 Acq: 07 Sep 2023 19:57

Instrument :
 MSVOA_X
 ClientSampleId :

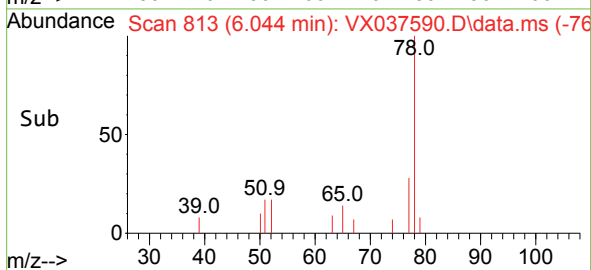
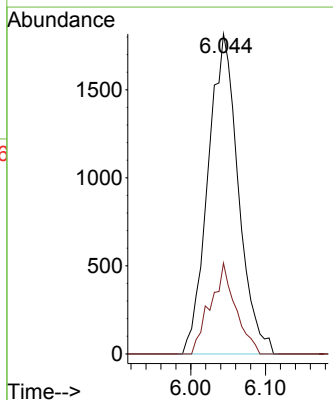
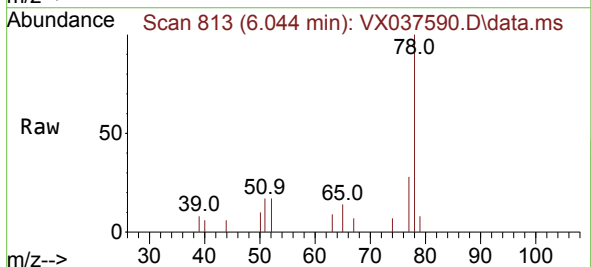


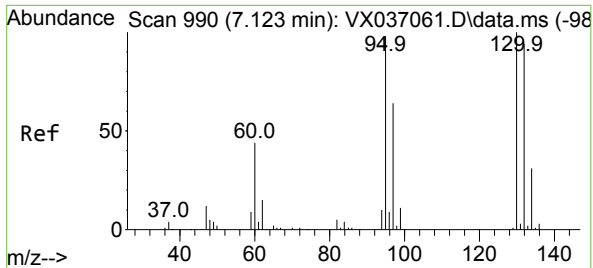
Tgt Ion: 83 Resp: 739
 Ion Ratio Lower Upper
 83 100
 55 0.0 64.6 97.0#
 98 174.9 36.7 55.1#



#40
 Benzene
 Concen: 0.744 ug/l
 RT: 6.044 min Scan# 813
 Delta R.T. 0.006 min
 Lab File: VX037590.D
 Acq: 07 Sep 2023 19:57

Tgt Ion: 78 Resp: 5120
 Ion Ratio Lower Upper
 78 100
 77 28.4 19.3 28.9

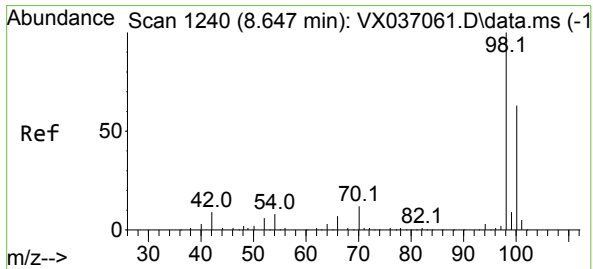
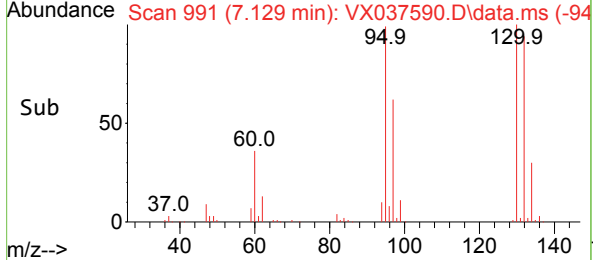
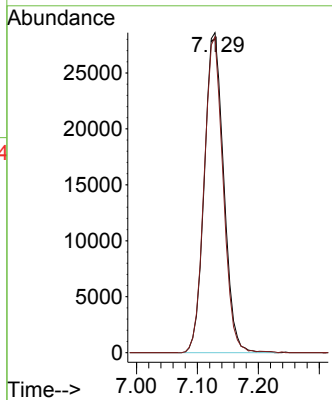
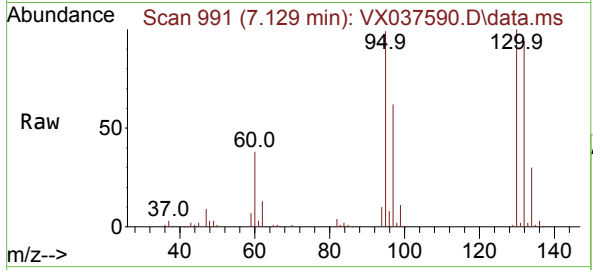




#44
 Trichloroethene
 Concen: 32.361 ug/l
 RT: 7.129 min Scan# 991
 Delta R.T. 0.006 min
 Lab File: VX037590.D
 Acq: 07 Sep 2023 19:57

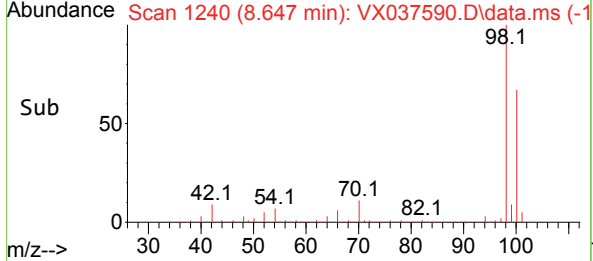
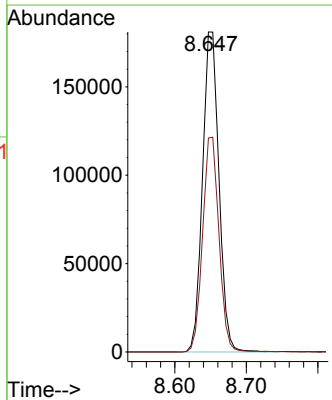
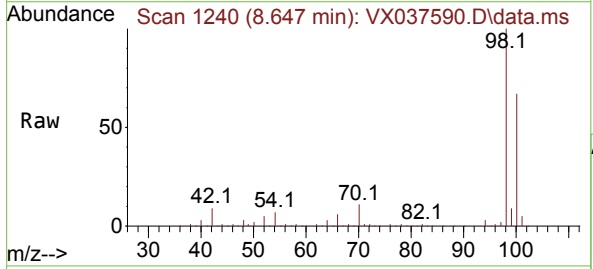
Instrument : MSVOA_X
 ClientSampleId :

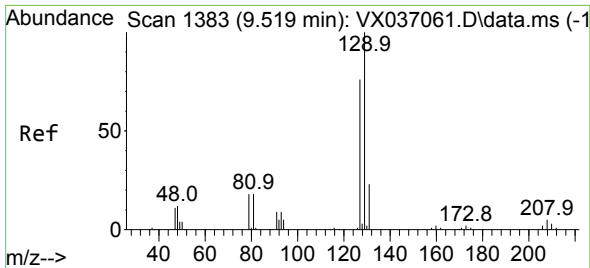
Tgt Ion:130 Resp: 63105
 Ion Ratio Lower Upper
 130 100
 95 98.7 0.0 204.4



#50
 Toluene-d8
 Concen: 47.259 ug/l
 RT: 8.647 min Scan# 1240
 Delta R.T. 0.000 min
 Lab File: VX037590.D
 Acq: 07 Sep 2023 19:57

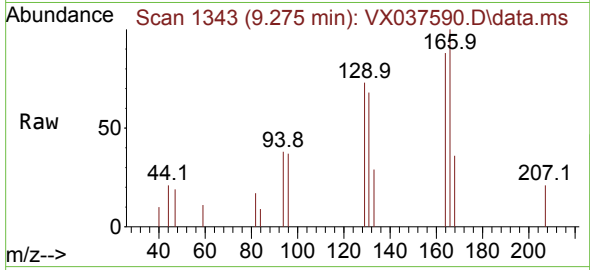
Tgt Ion: 98 Resp: 289334
 Ion Ratio Lower Upper
 98 100
 100 66.9 53.1 79.7



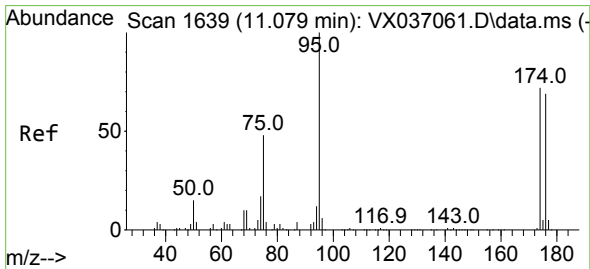
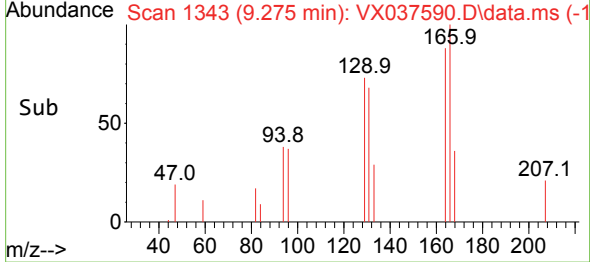
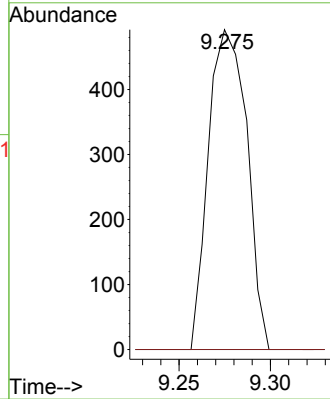


#60
 Dibromochloromethane
 Concen: 0.367 ug/l
 RT: 9.275 min Scan# 1343
 Delta R.T. -0.244 min
 Lab File: VX037590.D
 Acq: 07 Sep 2023 19:57

Instrument : MSVOA_X
 ClientSampleId :

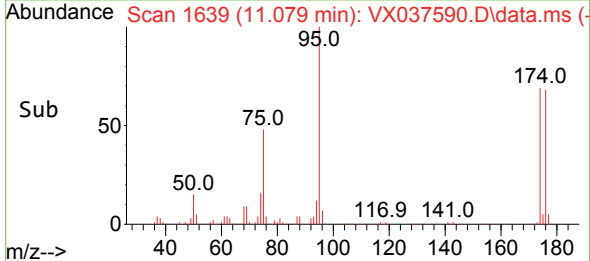
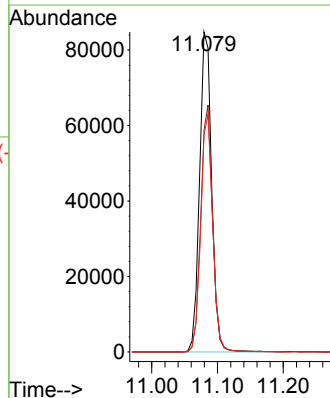
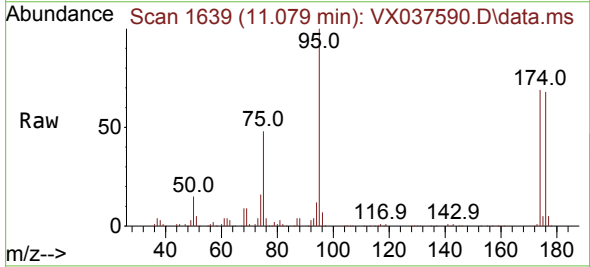


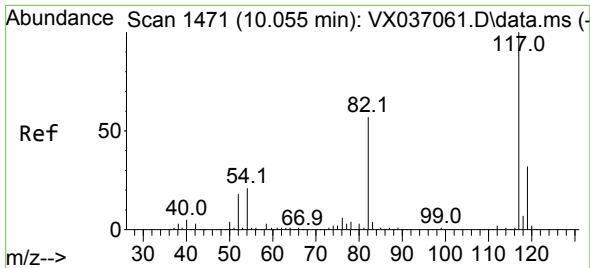
Tgt Ion:129 Resp: 722
 Ion Ratio Lower Upper
 129 100
 127 0.0 38.8 116.4#



#62
 4-Bromofluorobenzene
 Concen: 45.060 ug/l
 RT: 11.079 min Scan# 1639
 Delta R.T. 0.000 min
 Lab File: VX037590.D
 Acq: 07 Sep 2023 19:57

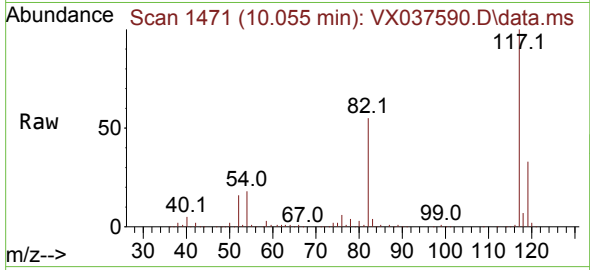
Tgt Ion: 95 Resp: 108412
 Ion Ratio Lower Upper
 95 100
 174 75.7 0.0 135.6
 176 73.3 0.0 131.0





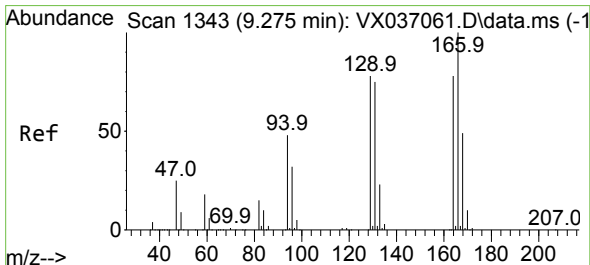
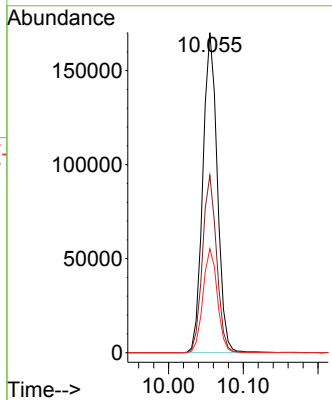
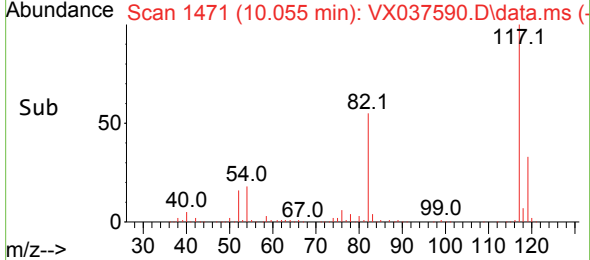
#63
 Chlorobenzene-d5
 Concen: 50.000 ug/l
 RT: 10.055 min Scan# 14
 Delta R.T. 0.000 min
 Lab File: VX037590.D
 Acq: 07 Sep 2023 19:57

Instrument :
 MSVOA_X
 ClientSampleId :

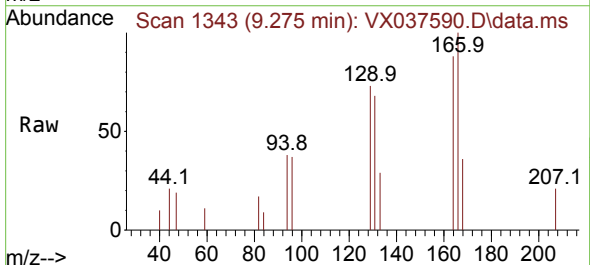


Tgt Ion:117 Resp: 228720

Ion	Ratio	Lower	Upper
117	100		
82	55.4	46.2	69.4
119	32.5	25.5	38.3

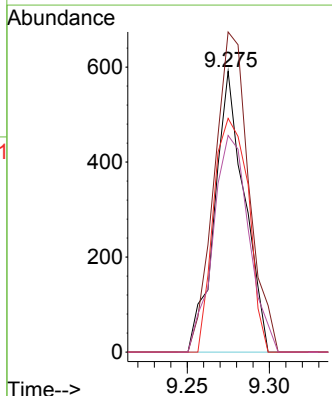
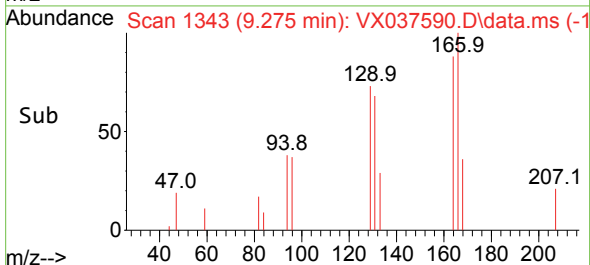


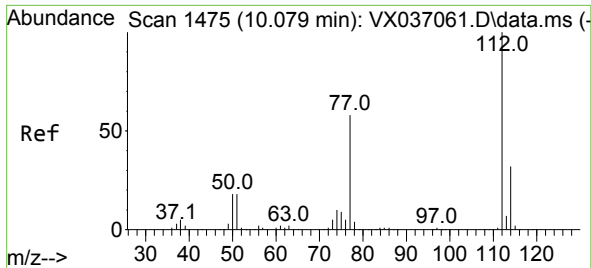
#64
 Tetrachloroethene
 Concen: 0.448 ug/l
 RT: 9.275 min Scan# 1343
 Delta R.T. 0.000 min
 Lab File: VX037590.D
 Acq: 07 Sep 2023 19:57



Tgt Ion:164 Resp: 747

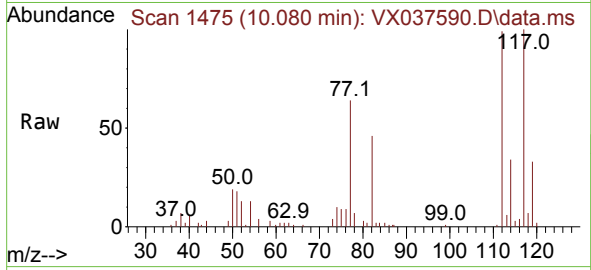
Ion	Ratio	Lower	Upper
164	100		
166	114.0	102.7	154.1
129	83.2	80.4	120.6
131	77.2	76.5	114.7



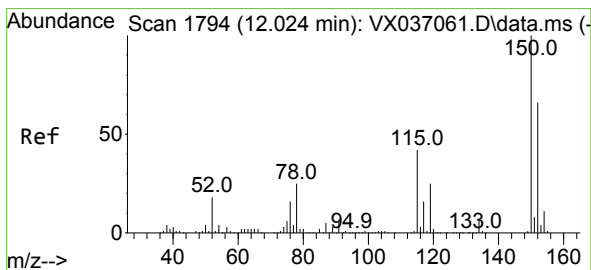
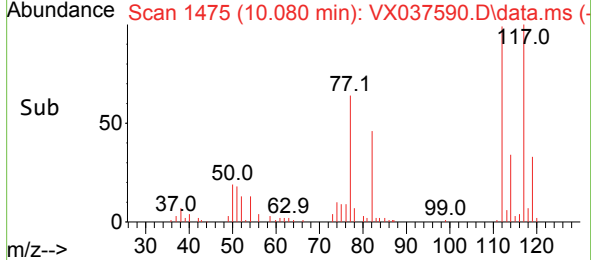
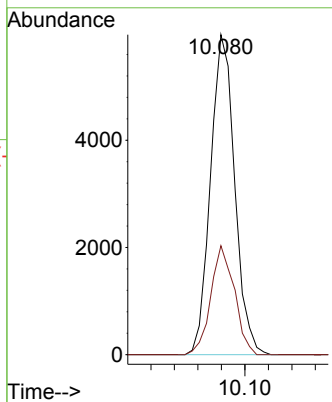


#65
 Chlorobenzene
 Concen: 1.764 ug/l
 RT: 10.080 min Scan# 1475
 Delta R.T. 0.000 min
 Lab File: VX037590.D
 Acq: 07 Sep 2023 19:57

Instrument : MSVOA_X
 ClientSampleId :

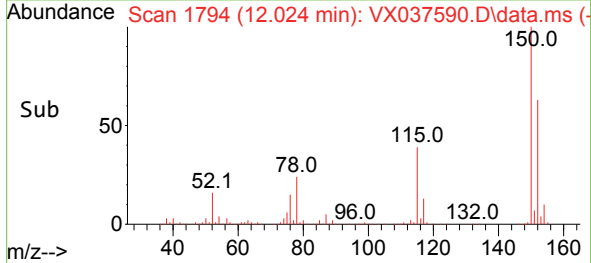
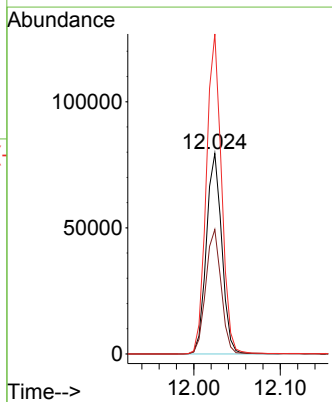
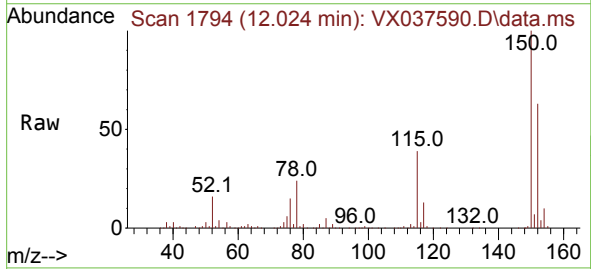


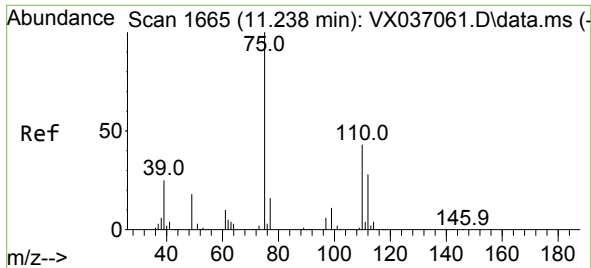
Tgt Ion:112 Resp: 8528
 Ion Ratio Lower Upper
 112 100
 114 34.1 25.7 38.5



#72
 1,4-Dichlorobenzene-d4
 Concen: 50.000 ug/l
 RT: 12.024 min Scan# 1794
 Delta R.T. 0.000 min
 Lab File: VX037590.D
 Acq: 07 Sep 2023 19:57

Tgt Ion:152 Resp: 98454
 Ion Ratio Lower Upper
 152 100
 115 62.1 43.3 129.9
 150 157.3 0.0 345.0

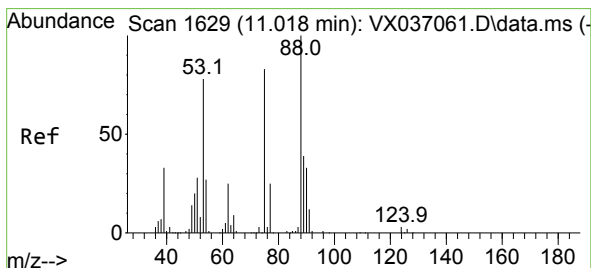
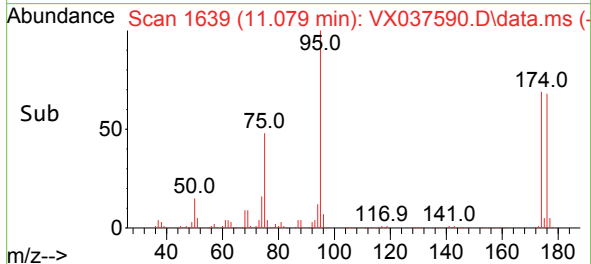
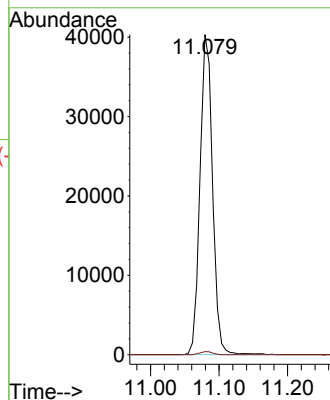
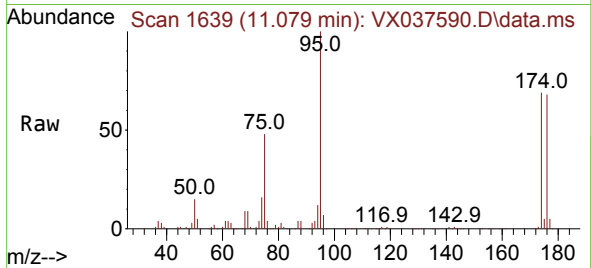




#76
 1,2,3-Trichloropropane
 Concen: 24.562 ug/l
 RT: 11.079 min Scan# 1639
 Delta R.T. -0.158 min
 Lab File: VX037590.D
 Acq: 07 Sep 2023 19:57

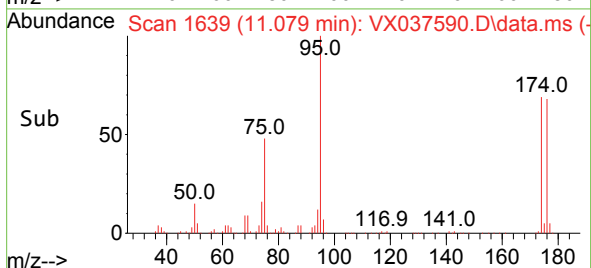
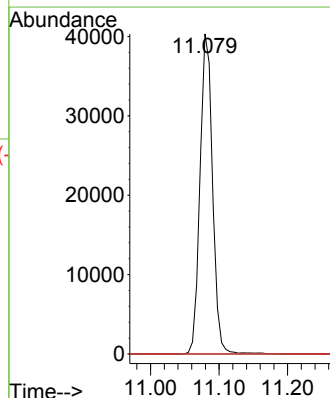
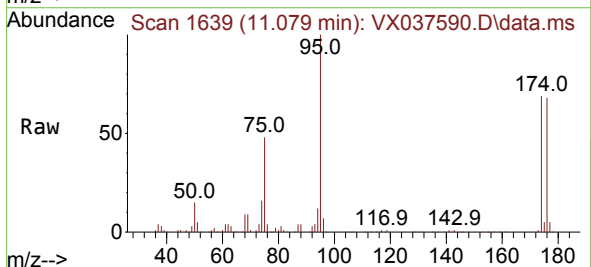
Instrument : MSVOA_X
 ClientSampleId :

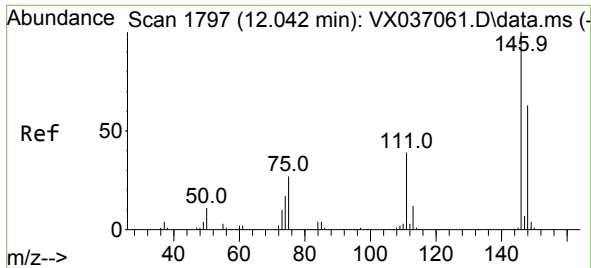
Tgt Ion: 75 Resp: 51500
 Ion Ratio Lower Upper
 75 100
 77 1.0 19.1 57.5#



#81
 trans-1,4-Dichloro-2-butene
 Concen: 68.602 ug/l
 RT: 11.079 min Scan# 1639
 Delta R.T. 0.061 min
 Lab File: VX037590.D
 Acq: 07 Sep 2023 19:57

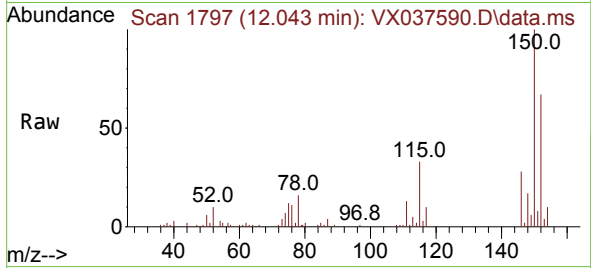
Tgt Ion: 75 Resp: 51500
 Ion Ratio Lower Upper
 75 100
 53 0.0 90.5 135.7#
 89 0.0 36.9 55.3#



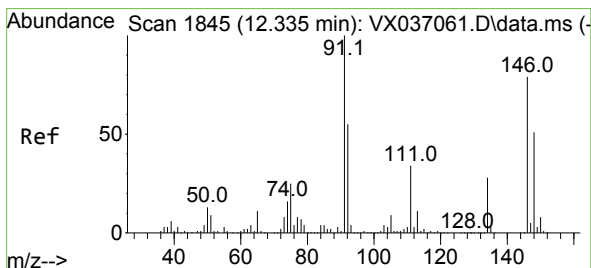
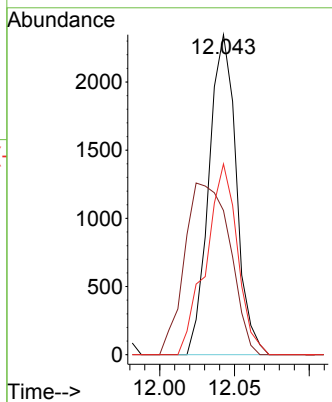
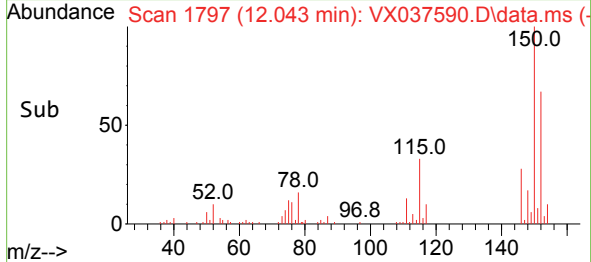


#88
 1,4-Dichlorobenzene
 Concen: 0.883 ug/l
 RT: 12.043 min Scan# 11
 Delta R.T. 0.000 min
 Lab File: VX037590.D
 Acq: 07 Sep 2023 19:57

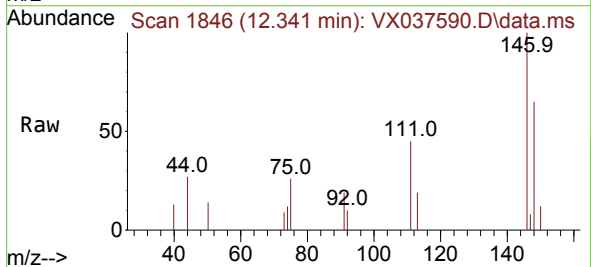
Instrument :
 MSVOA_X
 ClientSampleId :



Tgt Ion:146 Resp: 2986
 Ion Ratio Lower Upper
 146 100
 111 88.6 21.3 63.7#
 148 68.8 31.8 95.4



#91
 1,2-Dichlorobenzene
 Concen: 0.327 ug/l
 RT: 12.341 min Scan# 1846
 Delta R.T. 0.006 min
 Lab File: VX037590.D
 Acq: 07 Sep 2023 19:57



Tgt Ion:146 Resp: 1048
 Ion Ratio Lower Upper
 146 100
 111 35.8 22.4 67.0
 148 60.1 31.6 95.0

