

Data Path : Z:\VOASRV\HPCHEM1\MSVOA X\DATA\VX090819\
 Data File : VX012213.D
 Acq On : 08 Sep 2019 10:38
 Operator : SY/SP
 Sample : VX0908SBL01
 Misc : 5.00µ/5.0mL/MSVOA X/SOIL
 ALS Vial : 3 Sample Multiplier: 1

Instrument :
 MSVOA_X
 ClientSampleId :
 VX0908SBL01

Integration Parameters: RTEINT.P

Integrator: RTE
 Smoothing : ON Filtering: 5
 Sampling : 1 Min Area: 3 % of largest Peak
 Start Thrs: 0.2 Max Peaks: 100
 Stop Thrs : 0 Peak Location: TOP

If leading or trailing edge < 100 prefer < Baseline drop else tangent >
 Peak separation: 5

Method : Z:\VOASRV\HPCHEM1\MSVOA_X\METHOD\82X090319S.M
 Title : SW846 8260

Signal : TIC

peak #	R.T. min	first scan	max scan	last scan	PK TY	peak height	corr. area	corr. % max.	% of total
1	1.064	25	29	41	rVB	466531	558499	65.06%	10.489%
2	2.844	315	321	331	rVB2	5118	12061	1.40%	0.227%
3	3.509	422	430	436	rBV6	4080	9559	1.11%	0.180%
4	5.484	742	754	766	rBV2	92360	264425	30.80%	4.966%
5	5.649	769	781	796	rVB	179922	507778	59.15%	9.536%
6	6.045	835	846	858	rBV	101942	268964	31.33%	5.051%
7	6.843	967	977	991	rBV	268261	650145	75.73%	12.210%
8	8.709	1276	1283	1293	rBV	554701	858475	100.00%	16.122%
9	9.325	1376	1384	1392	rVB	34459	59221	6.90%	1.112%
10	10.105	1506	1512	1523	rBV	547688	744235	86.69%	13.977%
11	11.135	1675	1681	1689	rBV	442799	579160	67.46%	10.877%
12	11.361	1713	1718	1724	rVB	30376	41187	4.80%	0.773%
13	12.074	1829	1835	1848	rBV	580042	726836	84.67%	13.650%
14	12.812	1950	1956	1964	rVB	9932	14627	1.70%	0.275%
15	13.641	2088	2092	2101	rVB2	5673	9390	1.09%	0.176%
16	13.989	2143	2149	2152	rBV	14314	20275	2.36%	0.381%

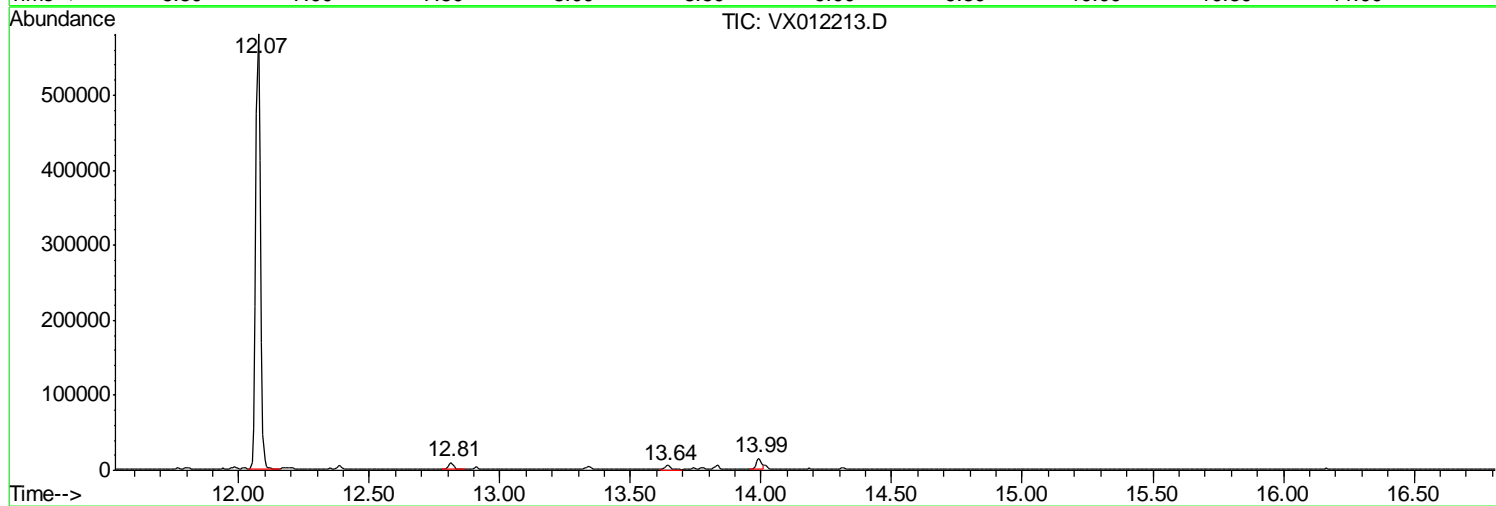
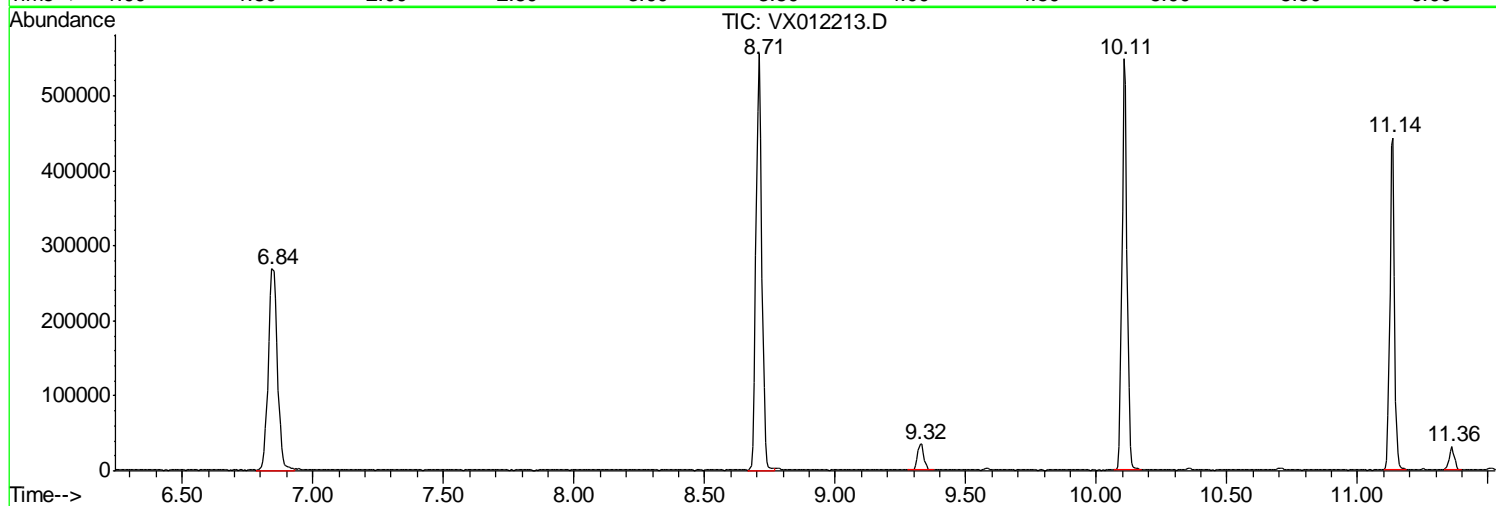
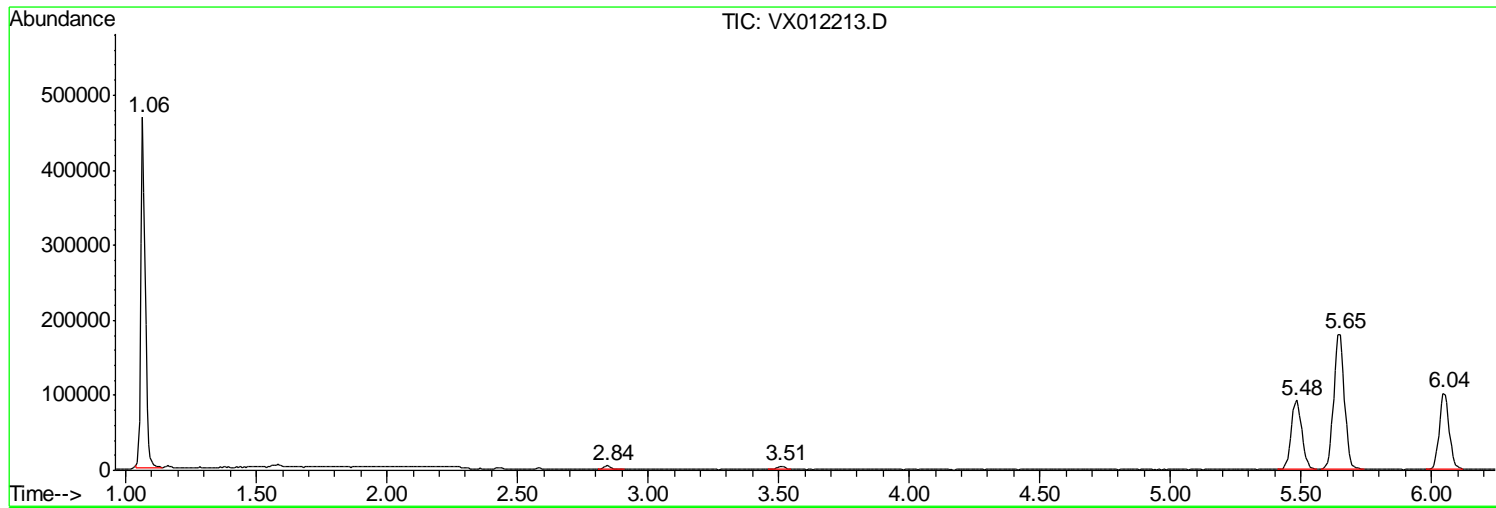
Sum of corrected areas: 5324837

Data Path : Z:\VOASRV\HPCHEM1\MSVOA X\DATA\VX090819\
Data File : VX012213.D
Acq On : 08 Sep 2019 10:38
Operator : SY/SP
Sample : VX0908SBL01
Misc : 5.00µ/5.0mL/MSVOA X/SOIL
ALS Vial : 3 Sample Multiplier: 1

Instrument :
MSVOA_X
ClientSampled :
VX0908SBL01

Quant Method : Z:\VOASRV\HPCHEM1\MSVOA_X\METHOD\82X090319S.M
Quant Title : SW846 8260

TIC Library : C:\DATABASE\NIST11.L
TIC Integration Parameters: LSCINT.P



Data Path : Z:\VOASRV\HPCHEM1\MSVOA_X\DATA\VX090819\
Data File : VX012213.D
Acq On : 08 Sep 2019 10:38
Operator : SY/SP
Sample : VX0908SBL01
Misc : 5.00g/5.0mL/MSVOA_X/SOIL
ALS Vial : 3 Sample Multiplier: 1

Instrument :
MSVOA_X
ClientSampleId :
VX0908SBL01

Quant Method : Z:\VOASRV\HPCHEM1\MSVOA_X\METHOD\82X090319S.M
Quant Title : SW846 8260

TIC Library : C:\DATABASE\NIST11.L
TIC Integration Parameters: LSCINT.P

No Library Search Compounds Detected

Data Path : Z:\VOASRV\HPCHEM1\MSVOA_X\DATA\VX090819\
Data File : VX012213.D
Acq On : 08 Sep 2019 10:38
Operator : SY/SP
Sample : VX0908SBL01
Misc : 5.00g/5.0mL/MSVOA_X/SOIL
ALS Vial : 3 Sample Multiplier: 1

Instrument :
MSVOA_X
ClientSampleId :
VX0908SBL01

Quant Method : Z:\VOASRV\HPCHEM1\MSVOA_X\METHOD\82X090319S.M
Quant Title : SW846 8260

TIC Library : C:\DATABASE\NIST11.L
TIC Integration Parameters: LSCINT.P

TIC Top Hit name	RT	EstConc	Units	Response	--Internal Standard--			
					#	RT	Resp	Conc
