

Data Path : Z:\VOASRV\HPCHEM1\MSVOA_X\DATA\VX090820\
 Data File : VX018275.D
 Acq On : 08 Sep 2020 15:12
 Operator : JC/SP
 Sample : L3902-21
 Misc : 5.0mL/MSVOA_X/WATER
 ALS Vial : 14 Sample Multiplier: 1

Instrument :
 MSVOA_X
 ClientSampleId :
 SA-PZ142I-20200902

Integration Parameters: RTEINT.P
 Integrator: RTE
 Smoothing : ON Filtering: 5
 Sampling : 1 Min Area: 3 % of largest Peak
 Start Thrs: 0.2 Max Peaks: 100
 Stop Thrs : 0 Peak Location: TOP

If leading or trailing edge < 100 prefer < Baseline drop else tangent >
 Peak separation: 5

Method : Z:\VOASRV\HPCHEM1\MSVOA_X\METHOD\82X082120W.M
 Title : SW846 8260

Signal : TIC

peak #	R.T. min	first scan	max scan	last scan	PK TY	peak height	corr. area	corr. % max.	% of total
1	2.575	237	244	252	rBV	30612	57252	2.45%	0.442%
2	3.672	415	424	431	rBV	30634	71769	3.07%	0.554%
3	5.465	707	718	733	rBV2	287069	832231	35.57%	6.420%
4	5.629	735	745	757	rVV	488601	1354925	57.90%	10.452%
5	6.032	801	811	822	rBV	311873	805952	34.44%	6.217%
6	6.830	932	942	953	rBV	712315	1704611	72.85%	13.149%
7	8.696	1240	1248	1257	rBV	1543512	2340006	100.00%	18.051%
8	10.098	1470	1478	1489	rBV	1511739	2065436	88.27%	15.933%
9	11.122	1638	1646	1656	rBV	1339240	1630501	69.68%	12.578%
10	12.061	1795	1800	1809	rVB	1729612	2100834	89.78%	16.206%

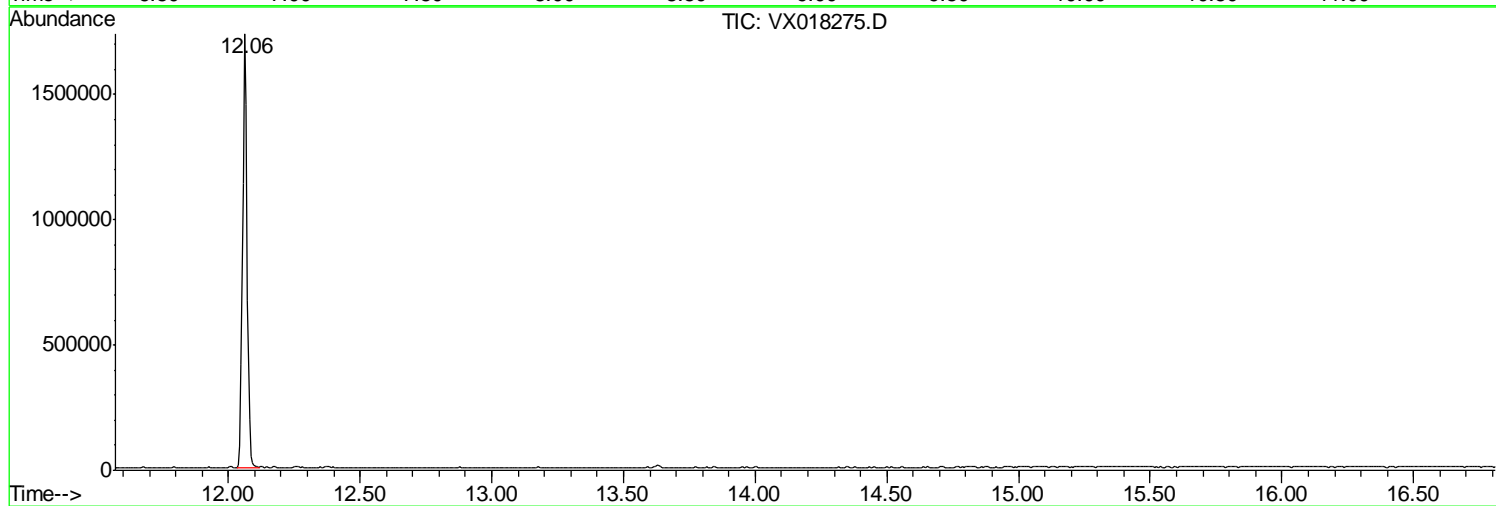
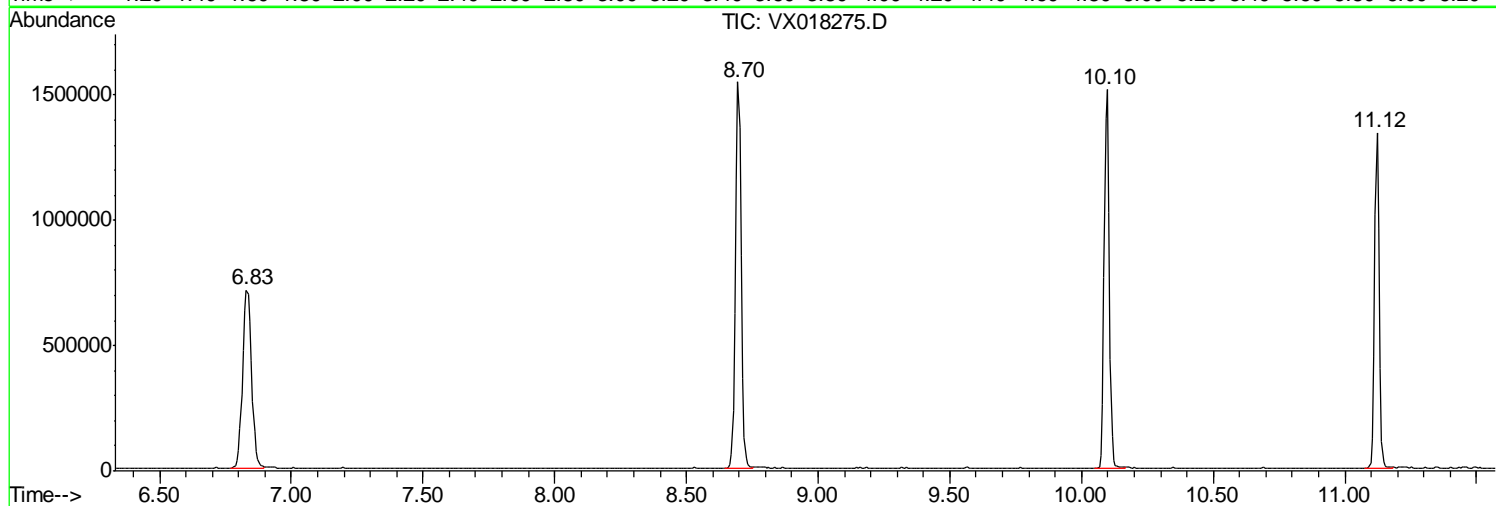
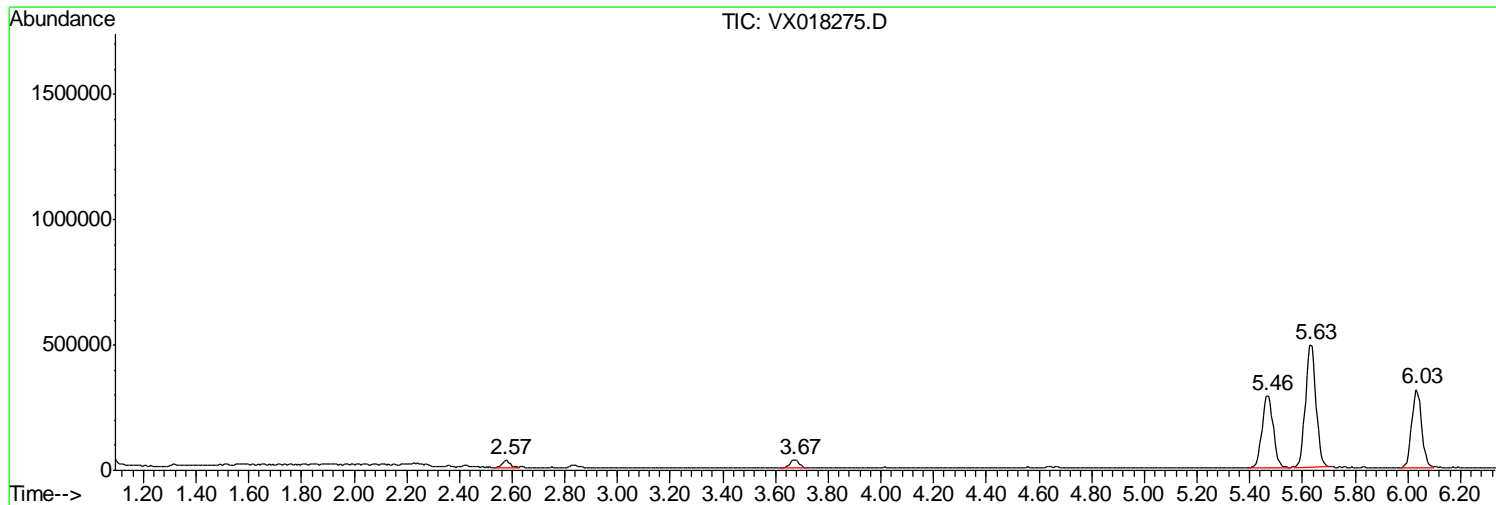
Sum of corrected areas: 12963517

Data Path : Z:\VOASRV\HPCHEM1\MSVOA_X\DATA\VX090820\
Data File : VX018275.D
Acq On : 08 Sep 2020 15:12
Operator : JC/SP
Sample : L3902-21
Misc : 5.0mL/MSVOA_X/WATER
ALS Vial : 14 Sample Multiplier: 1

Instrument :
MSVOA_X
ClientSampled :
SA-PZ142I-20200902

Quant Method : Z:\VOASRV\HPCHEM1\MSVOA_X\METHOD\82X082120W.M
Quant Title : SW846 8260

TIC Library : C:\DATABASE\NIST11.L
TIC Integration Parameters: LSCINT.P



Data Path : Z:\VOASRV\HPCHEM1\MSVOA_X\DATA\VX090820\
Data File : VX018275.D
Acq On : 08 Sep 2020 15:12
Operator : JC/SP
Sample : L3902-21
Misc : 5.0mL/MSVOA_X/WATER
ALS Vial : 14 Sample Multiplier: 1

Instrument :
MSVOA_X
ClientSampleId :
SA-PZ142I-20200902

Quant Method : Z:\VOASRV\HPCHEM1\MSVOA_X\METHOD\82X082120W.M
Quant Title : SW846 8260

TIC Library : C:\DATABASE\NIST11.L
TIC Integration Parameters: LSCINT.P

No Library Search Compounds Detected

Data Path : Z:\VOASRV\HPCHEM1\MSVOA_X\DATA\VX090820\
Data File : VX018275.D
Acq On : 08 Sep 2020 15:12
Operator : JC/SP
Sample : L3902-21
Misc : 5.0mL/MSVOA_X/WATER
ALS Vial : 14 Sample Multiplier: 1

Instrument :
MSVOA_X
ClientSampleId :
SA-PZ142I-20200902

Quant Method : Z:\VOASRV\HPCHEM1\MSVOA_X\METHOD\82X082120W.M
Quant Title : SW846 8260

TIC Library : C:\DATABASE\NIST11.L
TIC Integration Parameters: LSCINT.P

TIC Top Hit name	RT	EstConc	Units	Response	--Internal Standard--			
					#	RT	Resp	Conc
