

Data Path : Z:\voasrv\HPCHEM1\MSVOA\_X\Data\VX090823\  
 Data File : VX037609.D  
 Acq On : 08 Sep 2023 18:13  
 Operator : JC/MD  
 Sample : PB155394ZHE#01  
 Misc : 5.0mL/MSVOA\_X/WATER  
 ALS Vial : 17 Sample Multiplier: 1

Instrument :  
 MSVOA\_X  
 ClientSampleId :

Quant Time: Sep 09 04:57:40 2023  
 Quant Method : Z:\voasrv\HPCHEM1\MSVOA\_X\Method\82X090823W.M  
 Quant Title : SW846 8260  
 QLast Update : Sat Sep 09 03:56:07 2023  
 Response via : Initial Calibration

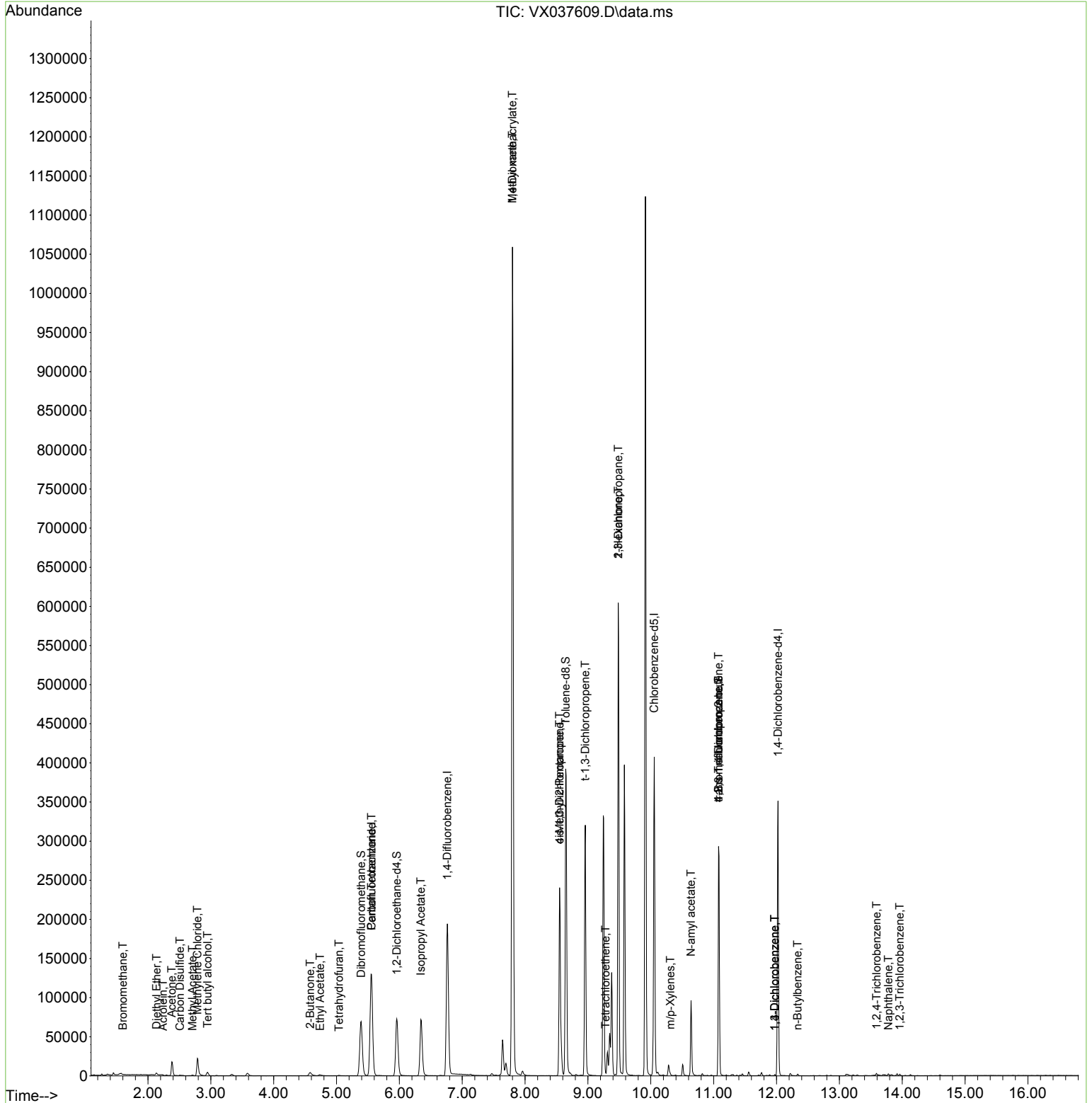
Compound	R.T.	QIon	Response	Conc	Units	Dev(Min)
-----						
Internal Standards						
1) Pentafluorobenzene	5.556	168	127066	50.000	ug/l	0.00
34) 1,4-Difluorobenzene	6.763	114	208943	50.000	ug/l	0.00
63) Chlorobenzene-d5	10.055	117	186974	50.000	ug/l	0.00
72) 1,4-Dichlorobenzene-d4	12.024	152	77344	50.000	ug/l	0.00
System Monitoring Compounds						
33) 1,2-Dichloroethane-d4	5.958	65	71040	41.417	ug/l	0.00
Spiked Amount	50.000	Range 78 - 117	Recovery	=	82.840%	
35) Dibromofluoromethane	5.391	113	63831	43.677	ug/l	0.00
Spiked Amount	50.000	Range 75 - 124	Recovery	=	87.360%	
50) Toluene-d8	8.647	98	248256	46.315	ug/l	0.00
Spiked Amount	50.000	Range 92 - 112	Recovery	=	92.640%	
62) 4-Bromofluorobenzene	11.079	95	85430	42.289	ug/l	0.00
Spiked Amount	50.000	Range 83 - 123	Recovery	=	84.580%	
Target Compounds						
						Qvalue
5) Bromomethane	1.599	94	214	0.325	ug/l #	78
8) Diethyl Ether	2.136	74	829	0.923	ug/l	95
11) Tert butyl alcohol	2.947	59	2735	7.126	ug/l #	78
13) Acrolein	2.239	56	235	0.623	ug/l	92
16) Acetone	2.380	43	19296	27.356	ug/l #	83
17) Carbon Disulfide	2.508	76	1107	0.324	ug/l #	94
18) Methyl Acetate	2.709	43	1087	0.380	ug/l	93
20) Methylene Chloride	2.788	84	12562	6.870	ug/l #	82
25) 2-Butanone	4.580	43	5785	5.408	ug/l #	71
29) Tetrahydrofuran	5.038	42	435	0.635	ug/l #	82
37) Ethyl Acetate	4.739	43	3107	1.570	ug/l	94
38) Carbon Tetrachloride	5.556	117	13067	6.549	ug/l #	14
43) Isopropyl Acetate	6.342	43	95972	32.369	ug/l #	89
48) Methyl methacrylate	7.799	41	82642	58.238	ug/l #	45
49) 1,4-Dioxane	7.799	88	140	3.144	ug/l #	1
51) 4-Methyl-2-Pentanone	8.549	43	85637	45.415	ug/l #	48
53) t-1,3-Dichloropropene	8.958	75	943	0.455	ug/l #	43
54) cis-1,3-Dichloropropene	8.549	75	44541	19.325	ug/l #	48
57) 1,3-Dichloropropane	9.482	76	5762	2.155	ug/l #	42
59) 2-Hexanone	9.482	43	62676	43.580	ug/l #	57
64) Tetrachloroethene	9.281	164	288	0.220	ug/l #	37
68) m/p-Xylenes	10.311	106	703	0.256	ug/l	98
74) N-amyl acetate	10.640	43	20121	10.047	ug/l #	55
76) 1,2,3-Trichloropropane	11.079	75	40398	22.264	ug/l #	39
81) trans-1,4-Dichloro-2-b...	11.079	75	40398	66.446	ug/l #	5
87) 1,3-Dichlorobenzene	11.969	146	659	0.241	ug/l	95
88) 1,4-Dichlorobenzene	11.969	146	659	0.237	ug/l	96
89) n-Butylbenzene	12.335	91	857	0.206	ug/l	98
93) 1,2,4-Trichlorobenzene	13.591	180	549	0.333	ug/l	94
95) Naphthalene	13.780	128	1849	0.321	ug/l #	91
96) 1,2,3-Trichlorobenzene	13.963	180	592	0.348	ug/l	93
-----						

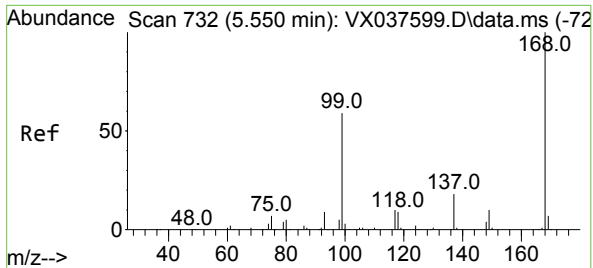
(#) = qualifier out of range (m) = manual integration (+) = signals summed

Data Path : Z:\voasrv\HPCHEM1\MSVOA\_X\Data\VX090823\  
 Data File : VX037609.D  
 Acq On : 08 Sep 2023 18:13  
 Operator : JC/MD  
 Sample : PB155394ZHE#01  
 Misc : 5.0mL/MSVOA\_X/WATER  
 ALS Vial : 17 Sample Multiplier: 1

Instrument :  
 MSVOA\_X  
 ClientSampleId :

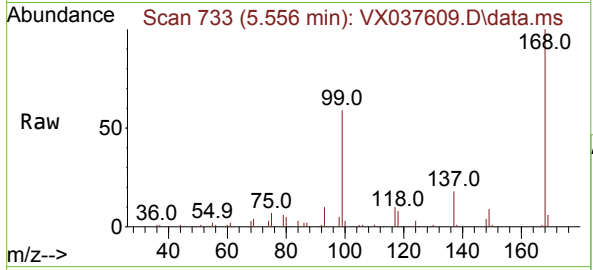
Quant Time: Sep 09 04:57:40 2023  
 Quant Method : Z:\voasrv\HPCHEM1\MSVOA\_X\Method\82X090823W.M  
 Quant Title : SW846 8260  
 QLast Update : Sat Sep 09 03:56:07 2023  
 Response via : Initial Calibration



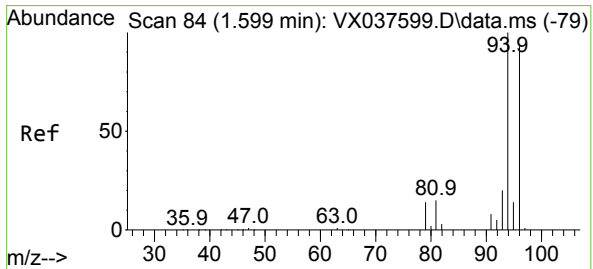
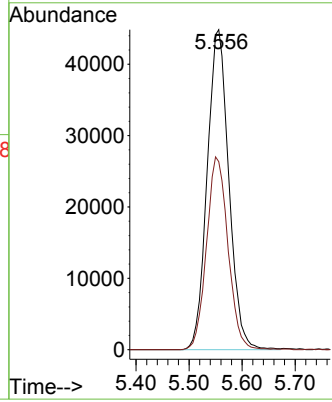
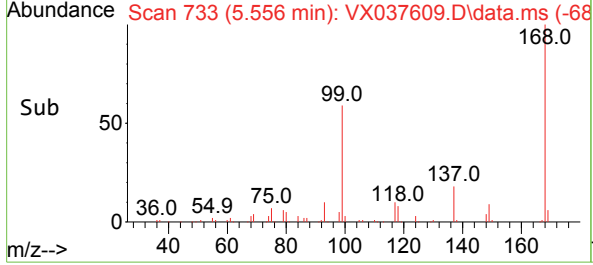


#1  
 Pentafluorobenzene  
 Concen: 50.000 ug/l  
 RT: 5.556 min Scan# 71  
 Delta R.T. 0.006 min  
 Lab File: VX037609.D  
 Acq: 08 Sep 2023 18:13

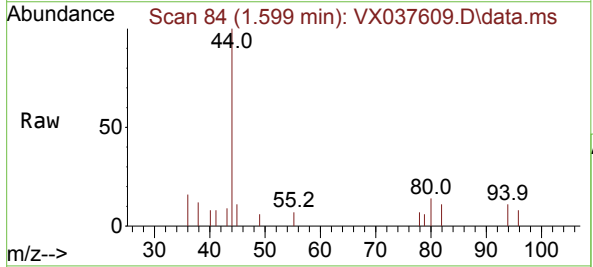
Instrument : MSVOA\_X  
 ClientSampleId :



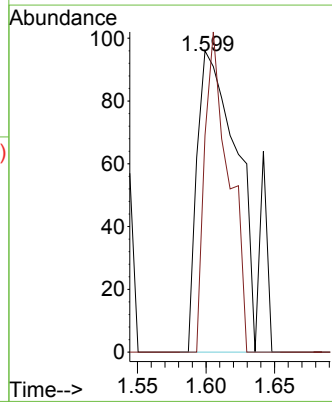
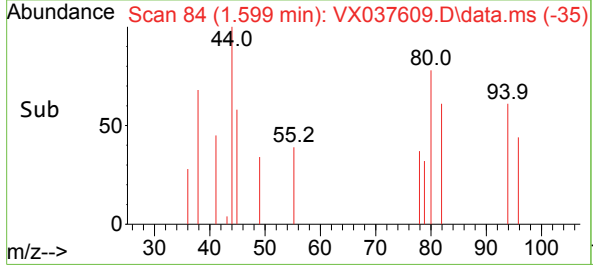
Tgt Ion:168 Resp: 127066  
 Ion Ratio Lower Upper  
 168 100  
 99 58.8 56.6 85.0

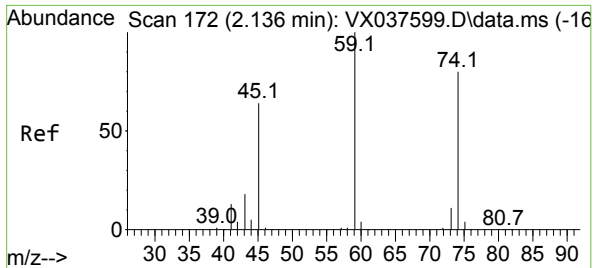


#5  
 Bromomethane  
 Concen: 0.325 ug/l  
 RT: 1.599 min Scan# 84  
 Delta R.T. -0.000 min  
 Lab File: VX037609.D  
 Acq: 08 Sep 2023 18:13



Tgt Ion: 94 Resp: 214  
 Ion Ratio Lower Upper  
 94 100  
 96 71.9 74.6 111.8#

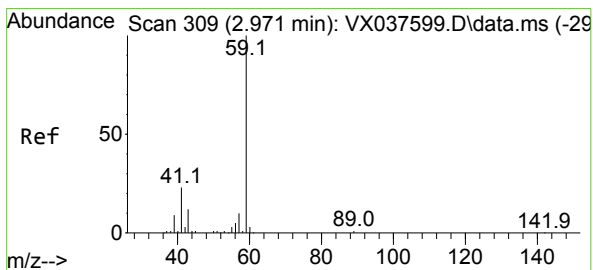
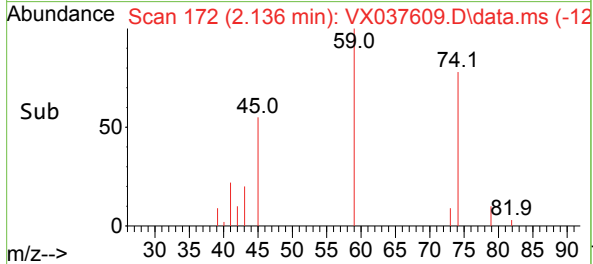
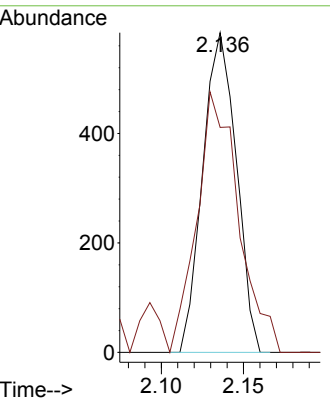
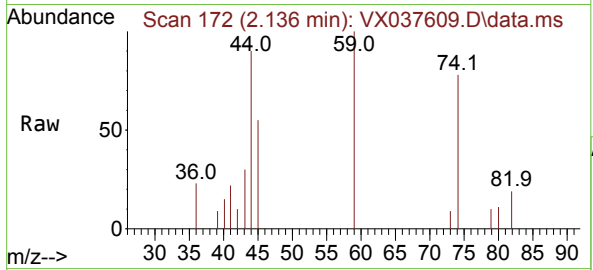




#8  
 Diethyl Ether  
 Concen: 0.923 ug/l  
 RT: 2.136 min Scan# 11  
 Delta R.T. -0.000 min  
 Lab File: VX037609.D  
 Acq: 08 Sep 2023 18:13

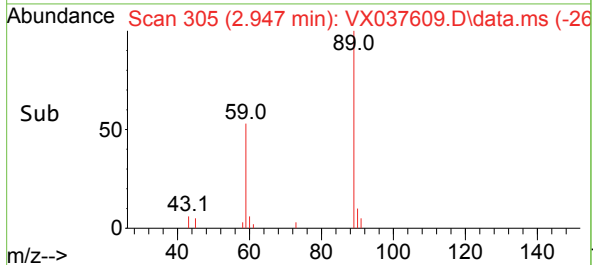
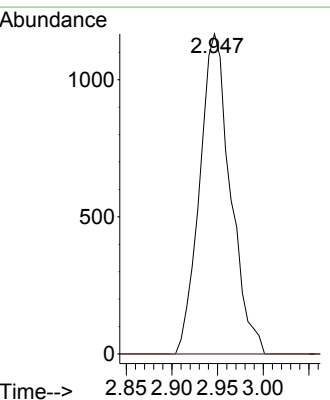
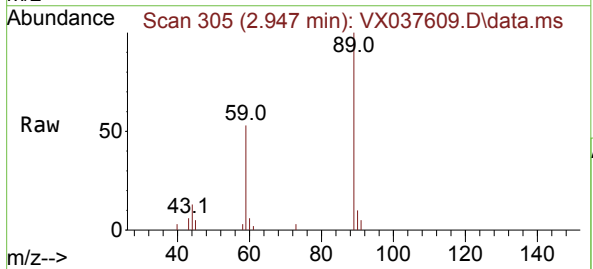
Instrument : MSVOA\_X  
 ClientSampleId :

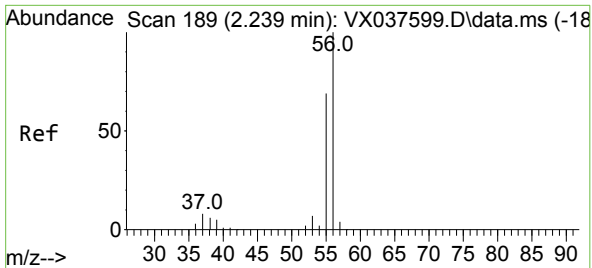
Tgt Ion: 74 Resp: 829  
 Ion Ratio Lower Upper  
 74 100  
 45 101.1 53.3 159.8



#11  
 Tert butyl alcohol  
 Concen: 7.126 ug/l  
 RT: 2.947 min Scan# 305  
 Delta R.T. -0.025 min  
 Lab File: VX037609.D  
 Acq: 08 Sep 2023 18:13

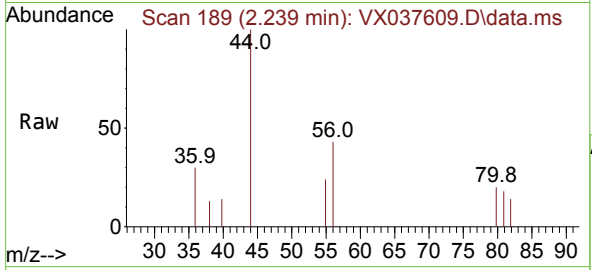
Tgt Ion: 59 Resp: 2735  
 Ion Ratio Lower Upper  
 59 100  
 57 0.0 6.0 9.0#



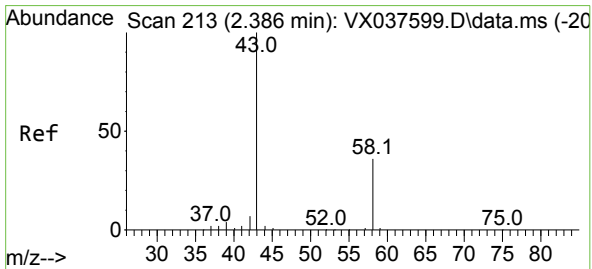
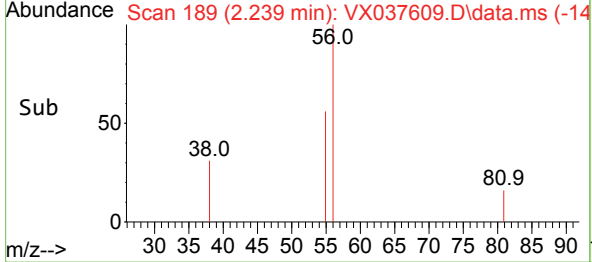
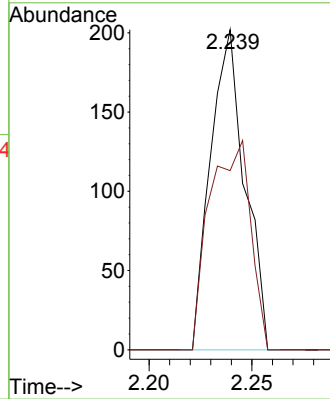


#13  
 Acrolein  
 Concen: 0.623 ug/l  
 RT: 2.239 min Scan# 11  
 Delta R.T. -0.000 min  
 Lab File: VX037609.D  
 Acq: 08 Sep 2023 18:13

Instrument : MSVOA\_X  
 ClientSampleId :

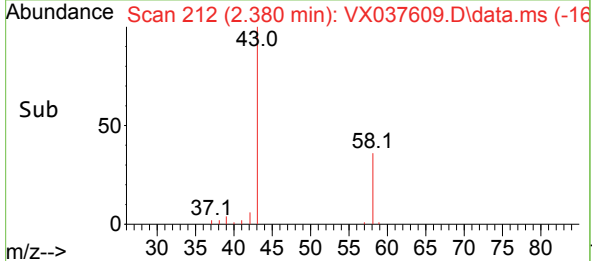
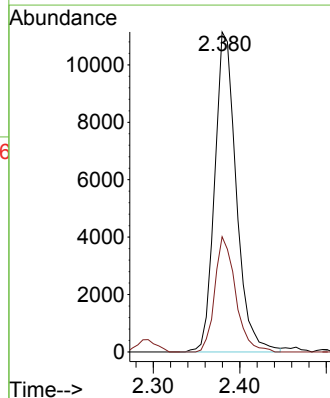
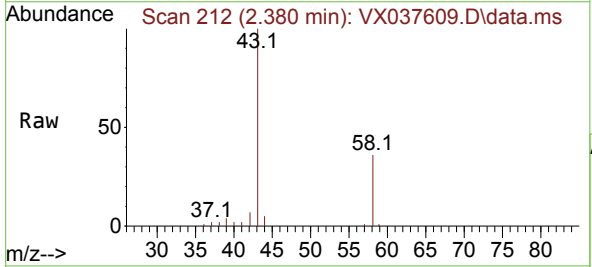


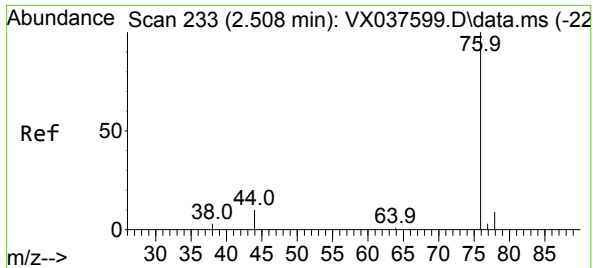
Tgt Ion: 56 Resp: 235  
 Ion Ratio Lower Upper  
 56 100  
 55 77.9 57.1 85.7



#16  
 Acetone  
 Concen: 27.356 ug/l  
 RT: 2.380 min Scan# 212  
 Delta R.T. -0.006 min  
 Lab File: VX037609.D  
 Acq: 08 Sep 2023 18:13

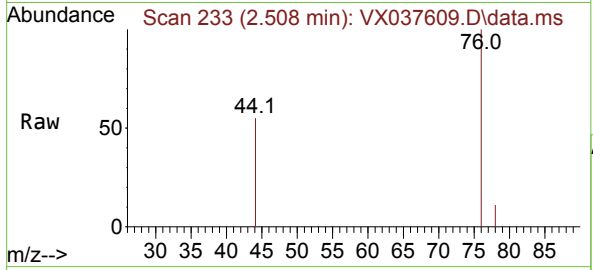
Tgt Ion: 43 Resp: 19296  
 Ion Ratio Lower Upper  
 43 100  
 58 36.0 21.9 32.9#



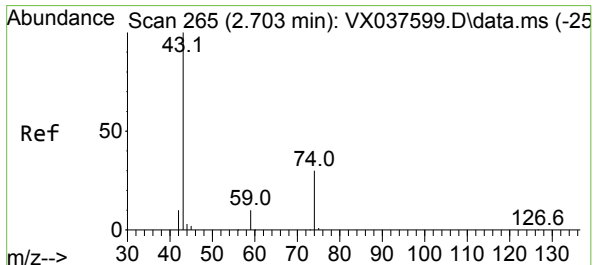
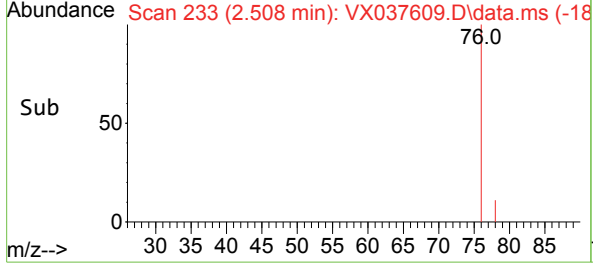
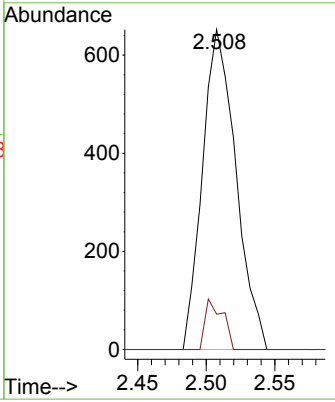


#17  
 Carbon Disulfide  
 Concen: 0.324 ug/l  
 RT: 2.508 min Scan# 211  
 Delta R.T. -0.000 min  
 Lab File: VX037609.D  
 Acq: 08 Sep 2023 18:13

Instrument : MSVOA\_X  
 ClientSampleId :

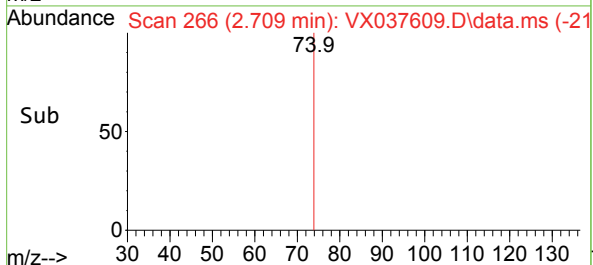
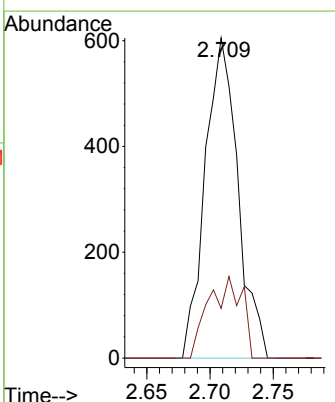
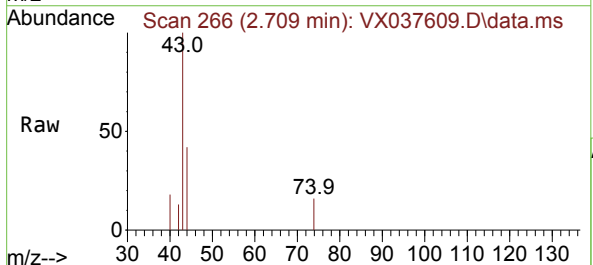


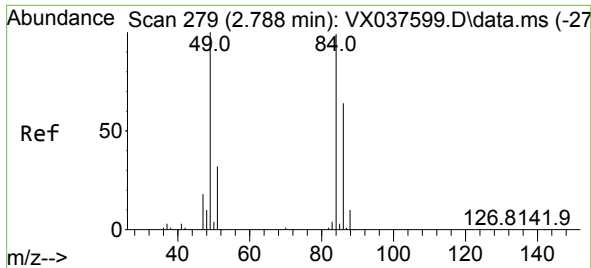
Tgt Ion: 76 Resp: 1107  
 Ion Ratio Lower Upper  
 76 100  
 78 11.0 7.0 10.6#



#18  
 Methyl Acetate  
 Concen: 0.380 ug/l  
 RT: 2.709 min Scan# 266  
 Delta R.T. 0.006 min  
 Lab File: VX037609.D  
 Acq: 08 Sep 2023 18:13

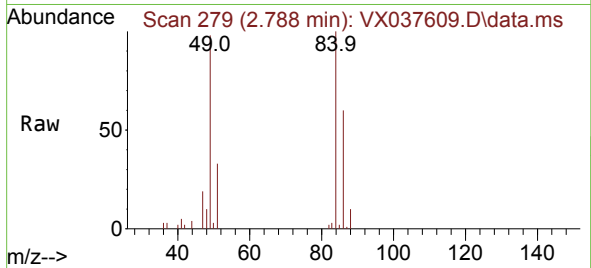
Tgt Ion: 43 Resp: 1087  
 Ion Ratio Lower Upper  
 43 100  
 74 25.9 17.8 26.8



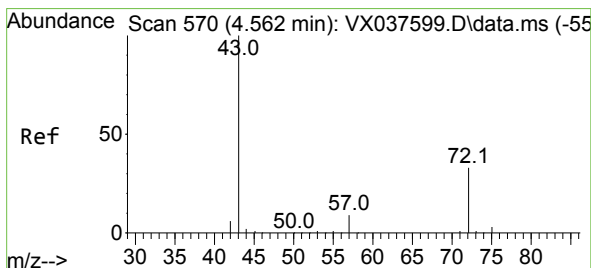
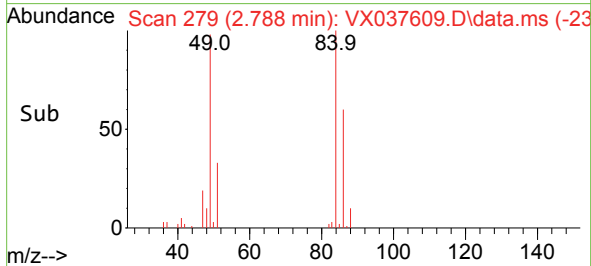
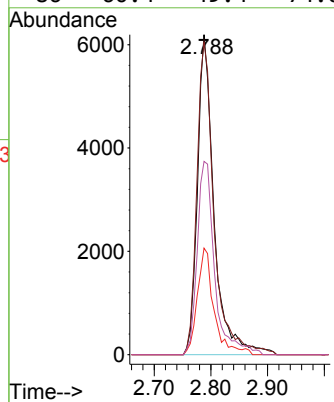


#20  
 Methylene Chloride  
 Concen: 6.870 ug/l  
 RT: 2.788 min Scan# 21  
 Delta R.T. 0.000 min  
 Lab File: VX037609.D  
 Acq: 08 Sep 2023 18:13

Instrument :  
 MSVOA\_X  
 ClientSampleId :

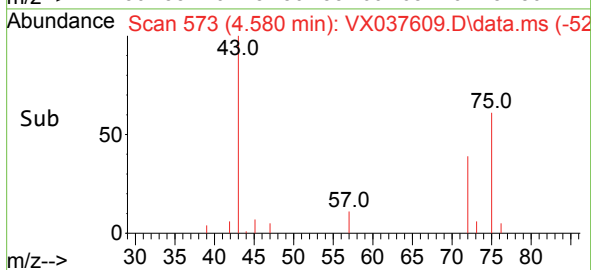
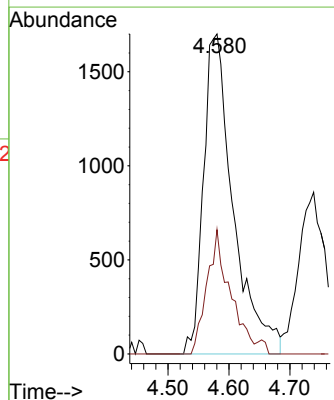
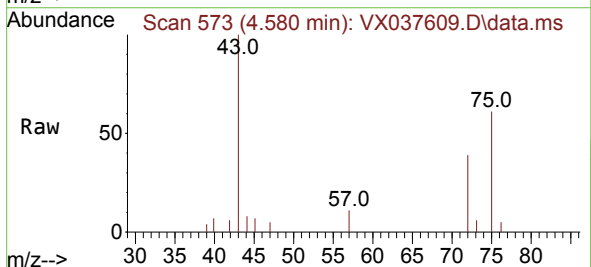


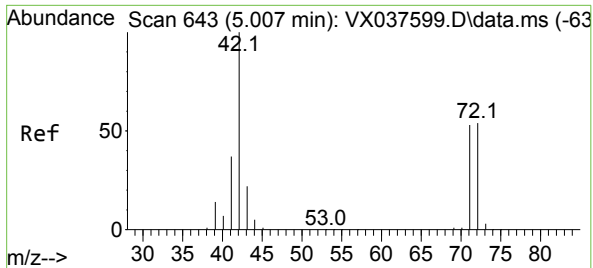
Tgt Ion: 84 Resp: 12562  
 Ion Ratio Lower Upper  
 84 100  
 49 97.7 103.6 155.4#  
 51 33.3 33.8 50.6#  
 86 60.4 49.4 74.0



#25  
 2-Butanone  
 Concen: 5.408 ug/l  
 RT: 4.580 min Scan# 573  
 Delta R.T. 0.018 min  
 Lab File: VX037609.D  
 Acq: 08 Sep 2023 18:13

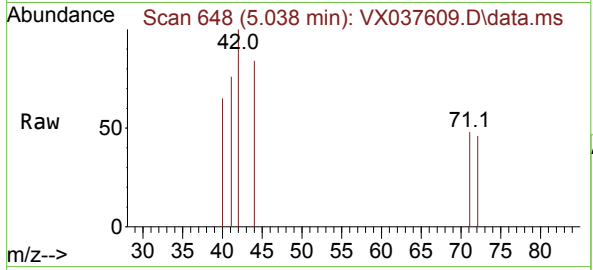
Tgt Ion: 43 Resp: 5785  
 Ion Ratio Lower Upper  
 43 100  
 72 38.9 19.4 29.2#





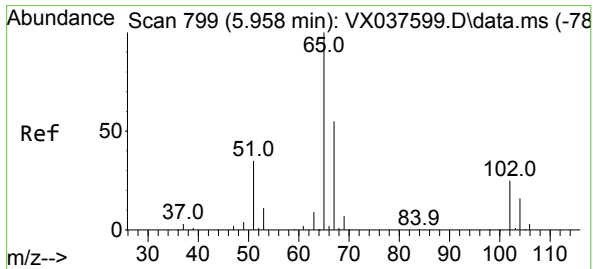
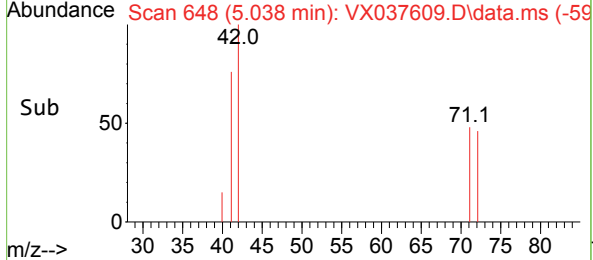
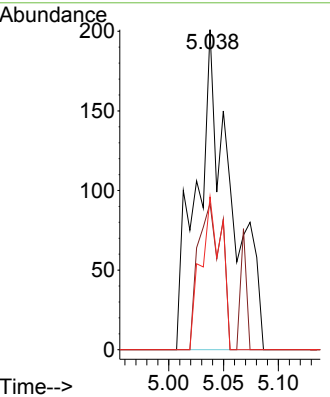
#29  
 Tetrahydrofuran  
 Concen: 0.635 ug/l  
 RT: 5.038 min Scan# 643  
 Delta R.T. 0.030 min  
 Lab File: VX037609.D  
 Acq: 08 Sep 2023 18:13

Instrument : MSVOA\_X  
 ClientSampleId :



Tgt Ion: 42 Resp: 435

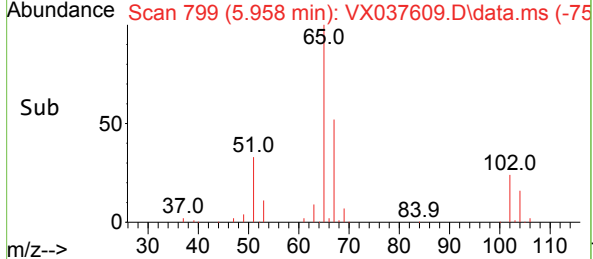
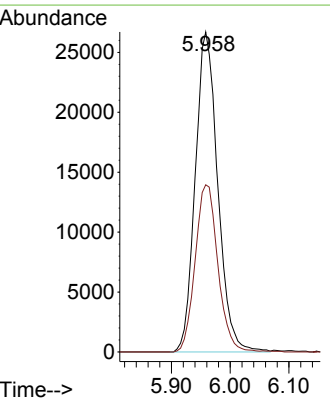
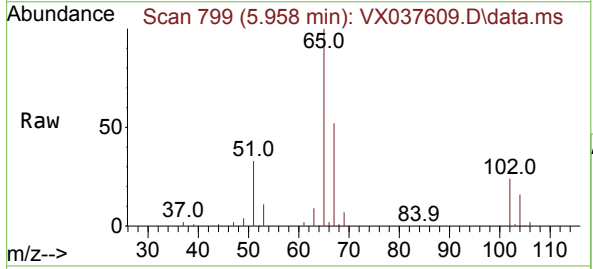
Ion	Ratio	Lower	Upper
42	100		
72	31.3	34.2	51.4#
71	28.7	32.2	48.2#



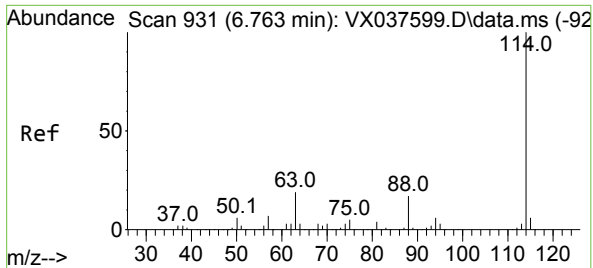
#33  
 1,2-Dichloroethane-d4  
 Concen: 41.417 ug/l  
 RT: 5.958 min Scan# 799  
 Delta R.T. -0.000 min  
 Lab File: VX037609.D  
 Acq: 08 Sep 2023 18:13

Tgt Ion: 65 Resp: 71040

Ion	Ratio	Lower	Upper
65	100		
67	52.7	0.0	100.2

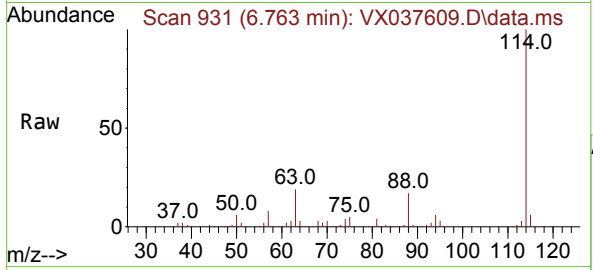






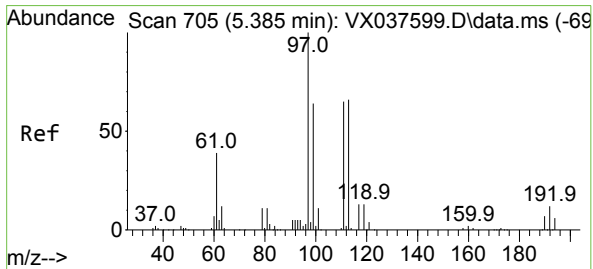
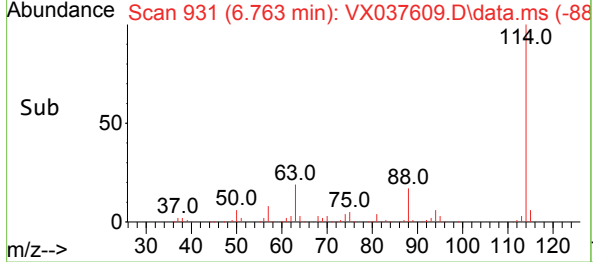
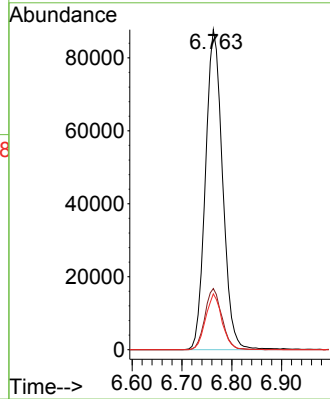
#34  
 1,4-Difluorobenzene  
 Concen: 50.000 ug/l  
 RT: 6.763 min Scan# 91  
 Delta R.T. -0.000 min  
 Lab File: VX037609.D  
 Acq: 08 Sep 2023 18:13

Instrument :  
 MSVOA\_X  
 ClientSampleId :



Tgt Ion:114 Resp: 208943

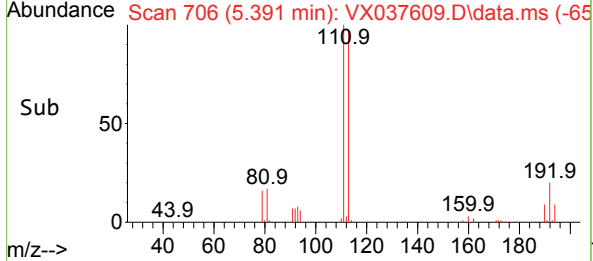
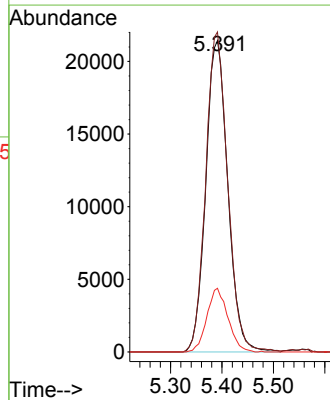
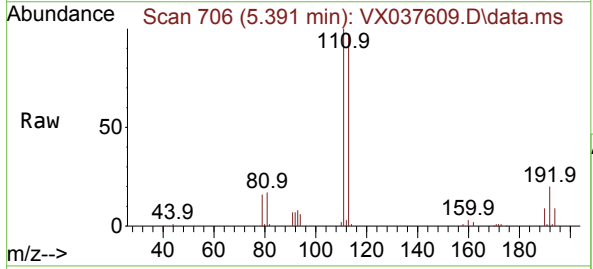
Ion	Ratio	Lower	Upper
114	100		
63	19.1	0.0	45.0
88	17.4	0.0	36.6

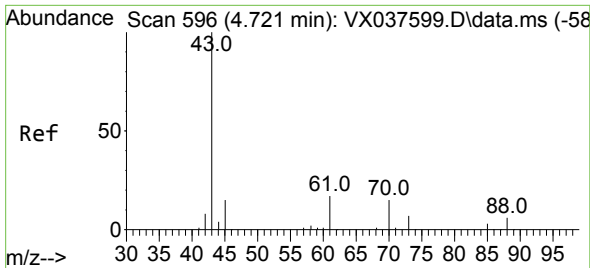


#35  
 Dibromofluoromethane  
 Concen: 43.677 ug/l  
 RT: 5.391 min Scan# 706  
 Delta R.T. 0.006 min  
 Lab File: VX037609.D  
 Acq: 08 Sep 2023 18:13

Tgt Ion:113 Resp: 63831

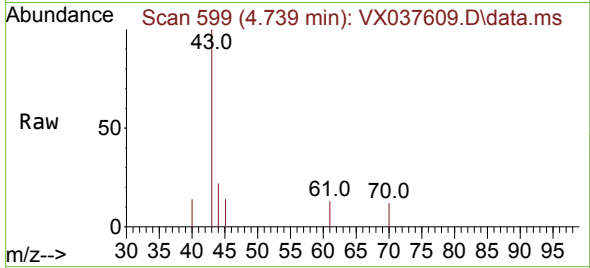
Ion	Ratio	Lower	Upper
113	100		
111	102.2	82.9	124.3
192	19.5	13.3	19.9





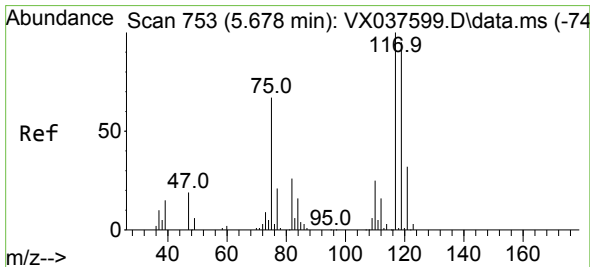
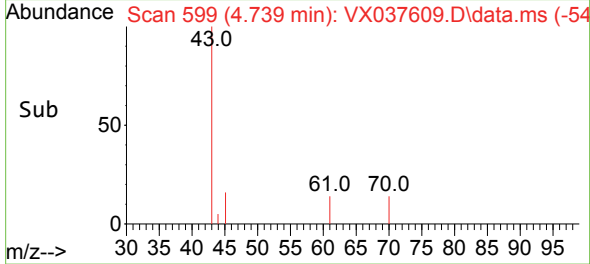
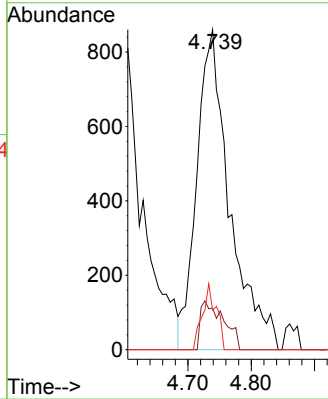
#37  
 Ethyl Acetate  
 Concen: 1.570 ug/l  
 RT: 4.739 min Scan# 599  
 Delta R.T. 0.018 min  
 Lab File: VX037609.D  
 Acq: 08 Sep 2023 18:13

Instrument : MSVOA\_X  
 ClientSampleId :



Tgt Ion: 43 Resp: 3107

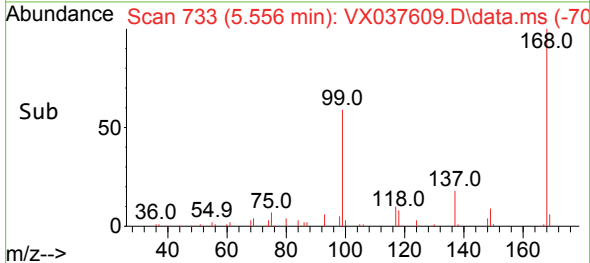
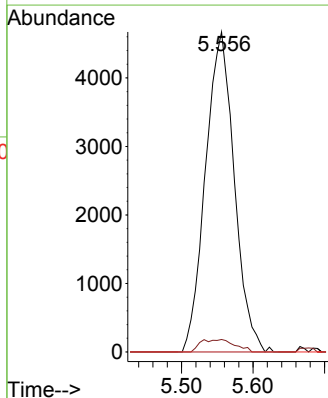
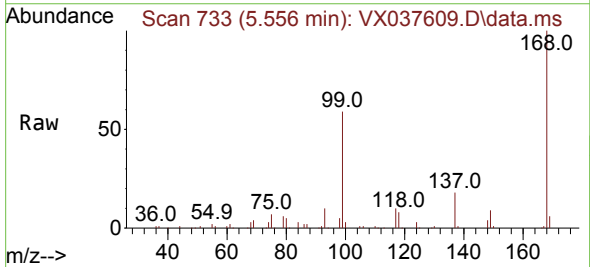
Ion	Ratio	Lower	Upper
43	100		
61	10.7	10.6	16.0
70	8.7	8.3	12.5

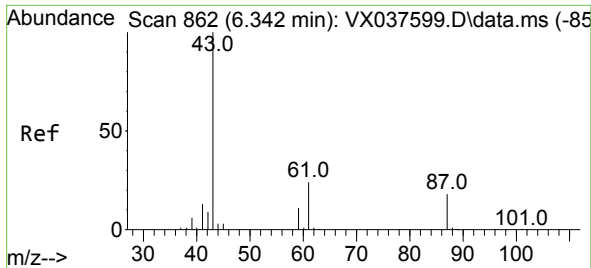


#38  
 Carbon Tetrachloride  
 Concen: 6.549 ug/l  
 RT: 5.556 min Scan# 733  
 Delta R.T. -0.122 min  
 Lab File: VX037609.D  
 Acq: 08 Sep 2023 18:13

Tgt Ion: 117 Resp: 13067

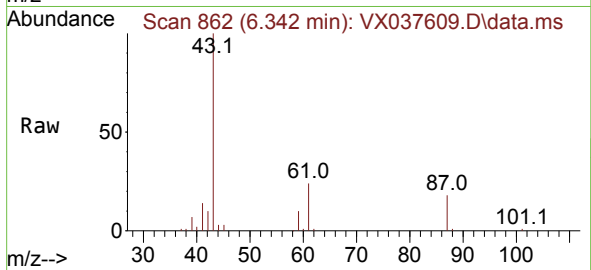
Ion	Ratio	Lower	Upper
117	100		
119	3.9	78.2	117.2#
121	0.0	24.4	36.6#



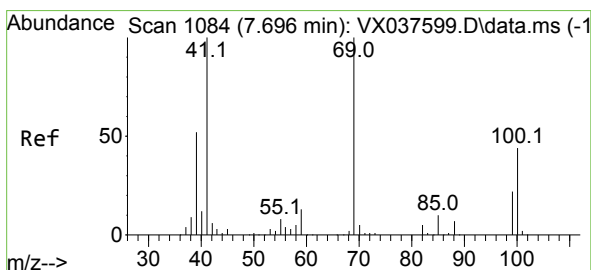
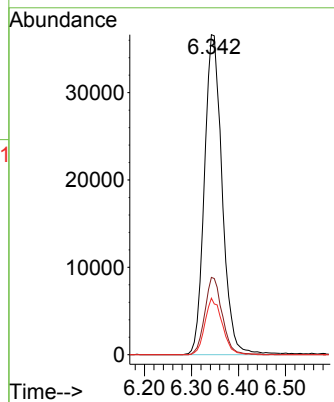
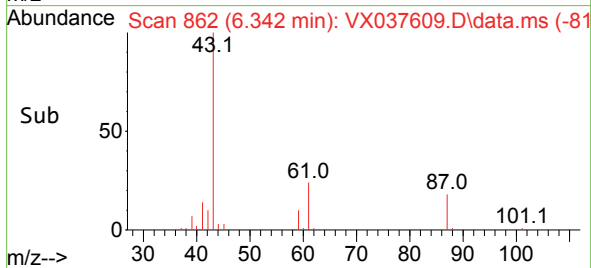


#43  
 Isopropyl Acetate  
 Concen: 32.369 ug/l  
 RT: 6.342 min Scan# 80  
 Delta R.T. -0.000 min  
 Lab File: VX037609.D  
 Acq: 08 Sep 2023 18:13

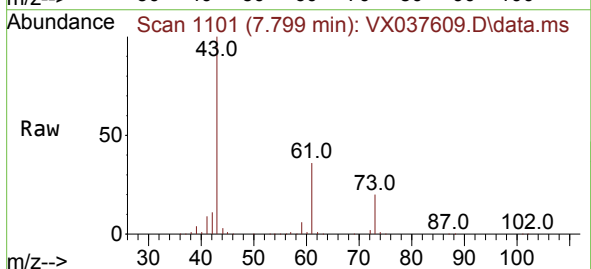
Instrument :  
 MSVOA\_X  
 ClientSampleId :



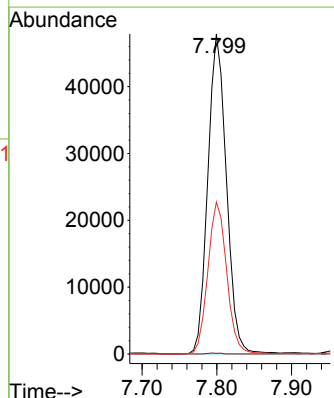
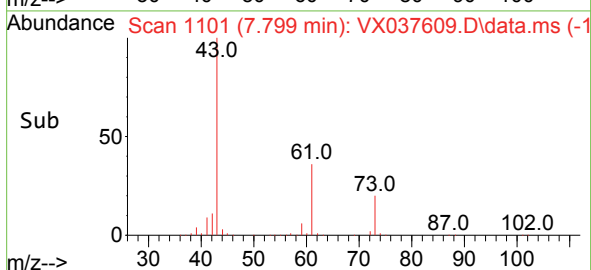
Tgt Ion: 43 Resp: 95972  
 Ion Ratio Lower Upper  
 43 100  
 61 23.5 15.2 22.8#  
 87 17.2 9.8 14.6#

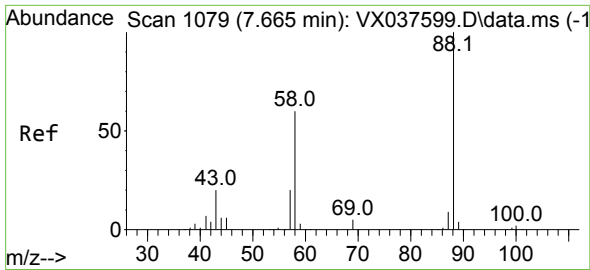


#48  
 Methyl methacrylate  
 Concen: 58.238 ug/l  
 RT: 7.799 min Scan# 1101  
 Delta R.T. 0.104 min  
 Lab File: VX037609.D  
 Acq: 08 Sep 2023 18:13



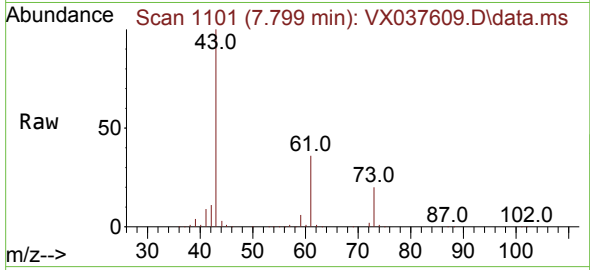
Tgt Ion: 41 Resp: 82642  
 Ion Ratio Lower Upper  
 41 100  
 69 0.2 59.2 88.8#  
 39 48.2 47.7 71.5



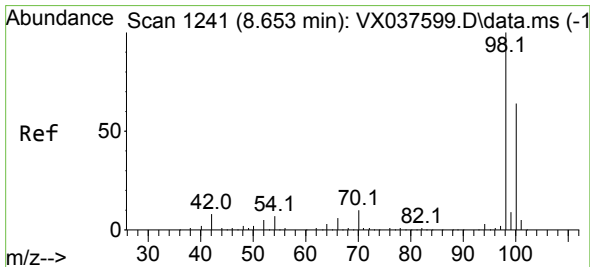
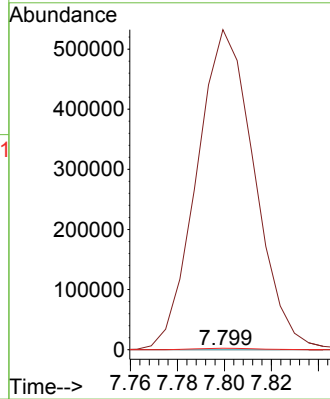
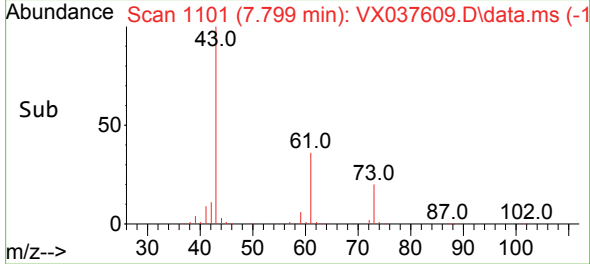


#49  
 1,4-Dioxane  
 Concen: 3.144 ug/l  
 RT: 7.799 min Scan# 1101  
 Delta R.T. 0.134 min  
 Lab File: VX037609.D  
 Acq: 08 Sep 2023 18:13

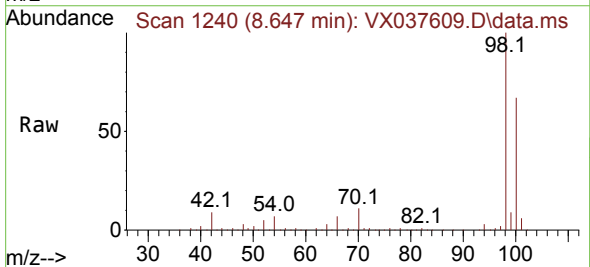
Instrument :  
 MSVOA\_X  
 ClientSampleId :



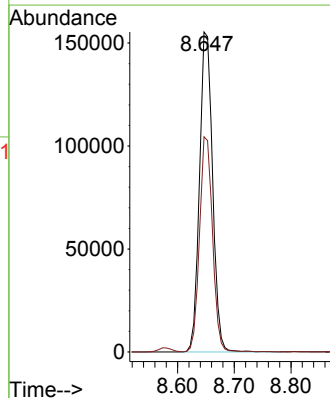
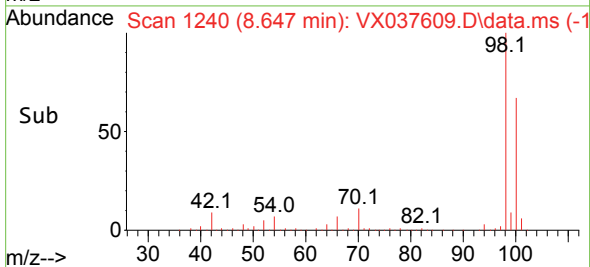
Tgt Ion: 88 Resp: 140  
 Ion Ratio Lower Upper  
 88 100  
 43 656987.9 0.0 0.0#  
 58 3132.1 60.1 90.1#

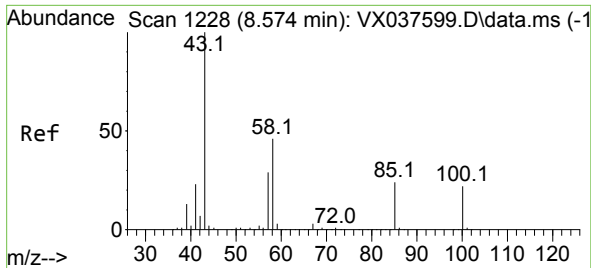


#50  
 Toluene-d8  
 Concen: 46.315 ug/l  
 RT: 8.647 min Scan# 1240  
 Delta R.T. -0.006 min  
 Lab File: VX037609.D  
 Acq: 08 Sep 2023 18:13



Tgt Ion: 98 Resp: 248256  
 Ion Ratio Lower Upper  
 98 100  
 100 66.9 53.1 79.7

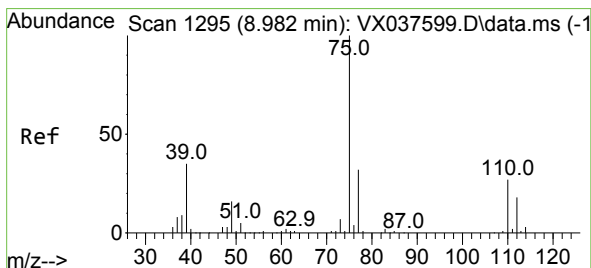
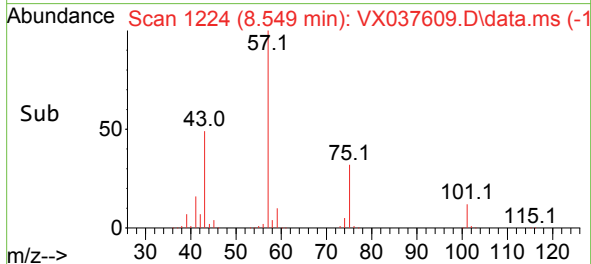
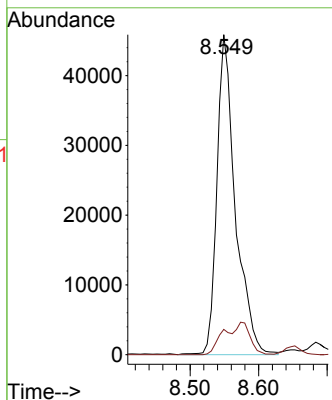
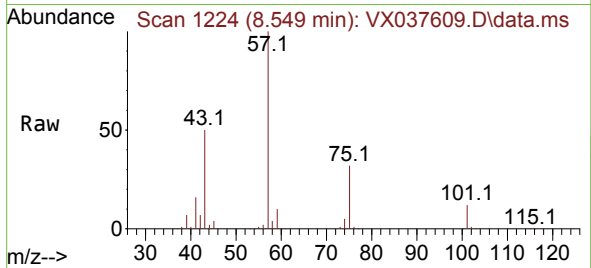




#51  
 4-Methyl-2-Pentanone  
 Concen: 45.415 ug/l  
 RT: 8.549 min Scan# 111  
 Delta R.T. -0.024 min  
 Lab File: VX037609.D  
 Acq: 08 Sep 2023 18:13

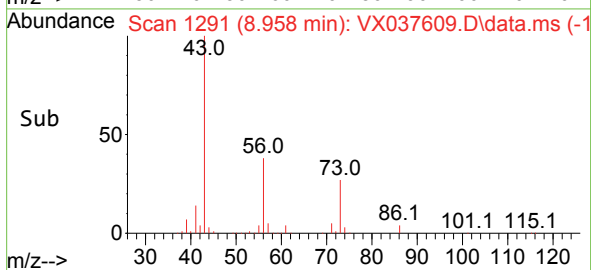
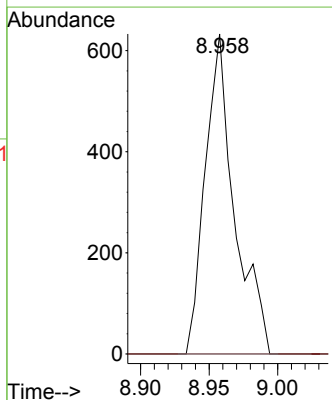
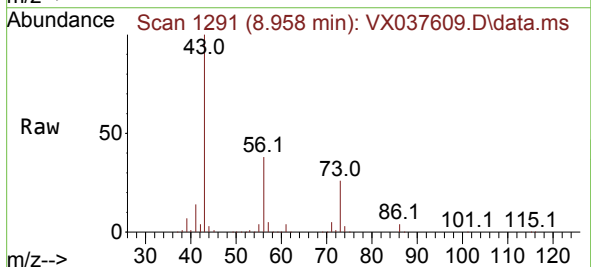
Instrument : MSVOA\_X  
 ClientSampleId :

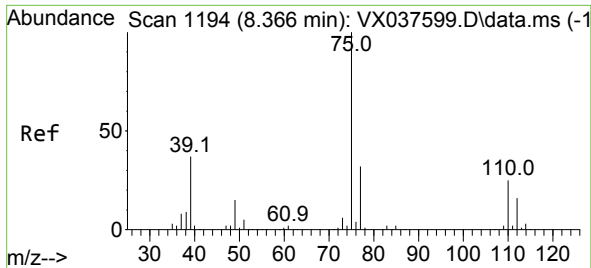
Tgt Ion: 43 Resp: 85637  
 Ion Ratio Lower Upper  
 43 100  
 58 6.4 30.4 45.6#



#53  
 t-1,3-Dichloropropene  
 Concen: 0.455 ug/l  
 RT: 8.958 min Scan# 1291  
 Delta R.T. -0.025 min  
 Lab File: VX037609.D  
 Acq: 08 Sep 2023 18:13

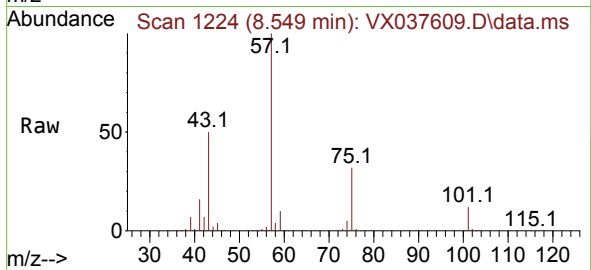
Tgt Ion: 75 Resp: 943  
 Ion Ratio Lower Upper  
 75 100  
 77 0.0 25.7 38.5#



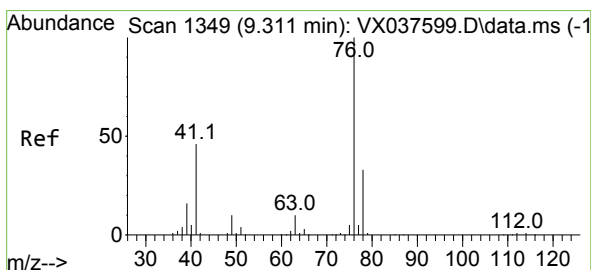
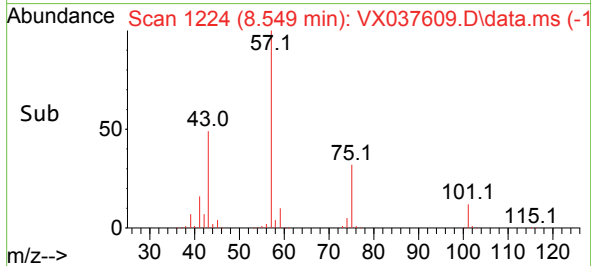
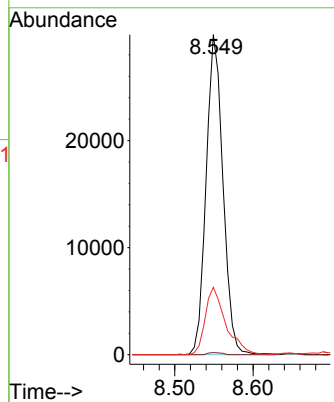


#54  
 cis-1,3-Dichloropropene  
 Concen: 19.325 ug/l  
 RT: 8.549 min Scan# 1194  
 Delta R.T. 0.183 min  
 Lab File: VX037609.D  
 Acq: 08 Sep 2023 18:13

Instrument : MSVOA\_X  
 ClientSampleId :

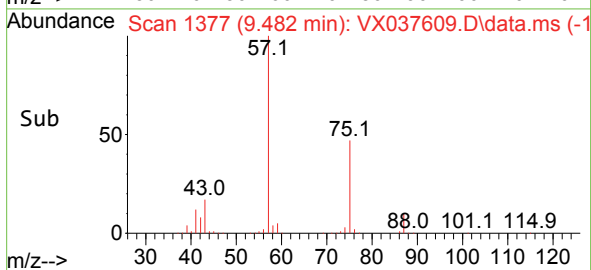
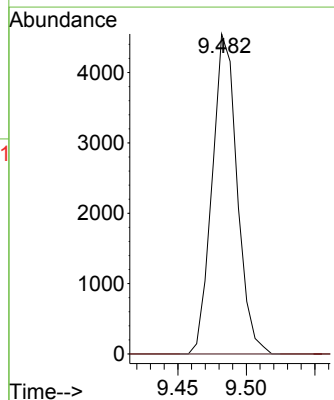
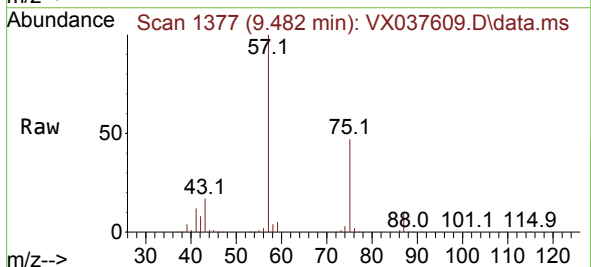


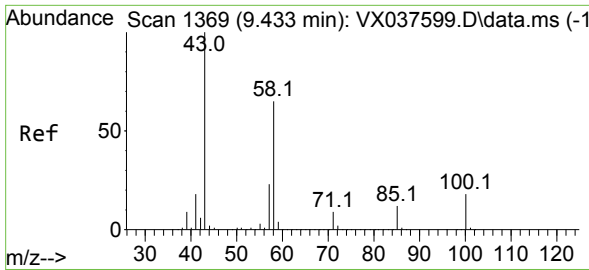
Tgt Ion: 75 Resp: 44541  
 Ion Ratio Lower Upper  
 75 100  
 77 0.7 25.3 37.9#  
 39 20.9 46.7 70.1#



#57  
 1,3-Dichloropropane  
 Concen: 2.155 ug/l  
 RT: 9.482 min Scan# 1377  
 Delta R.T. 0.171 min  
 Lab File: VX037609.D  
 Acq: 08 Sep 2023 18:13

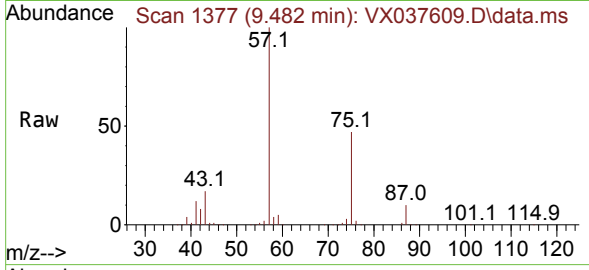
Tgt Ion: 76 Resp: 5762  
 Ion Ratio Lower Upper  
 76 100  
 78 0.0 26.1 39.1#



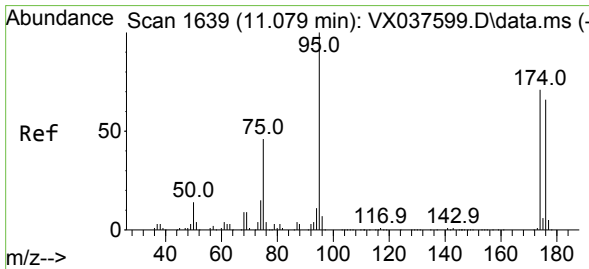
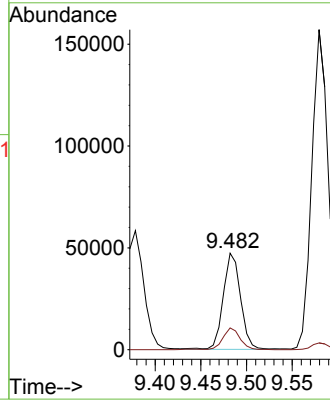
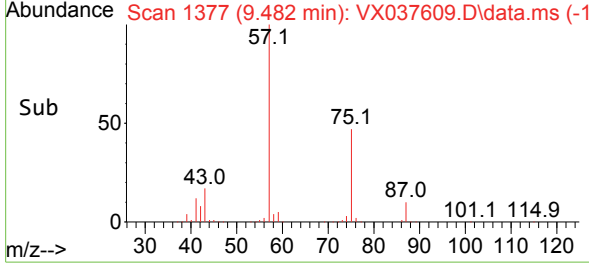


#59  
 2-Hexanone  
 Concen: 43.580 ug/l  
 RT: 9.482 min Scan# 11  
 Delta R.T. 0.049 min  
 Lab File: VX037609.D  
 Acq: 08 Sep 2023 18:13

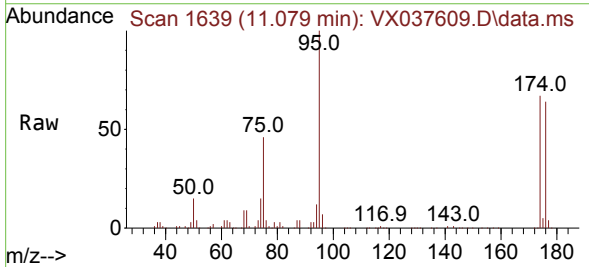
Instrument :  
 MSVOA\_X  
 ClientSampleId :



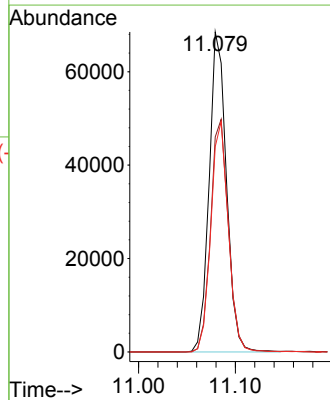
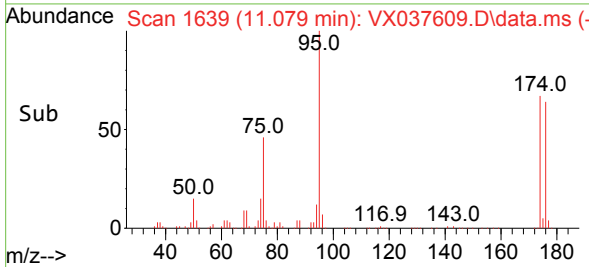
Tgt Ion: 43 Resp: 62676  
 Ion Ratio Lower Upper  
 43 100  
 58 22.1 26.2 78.5#

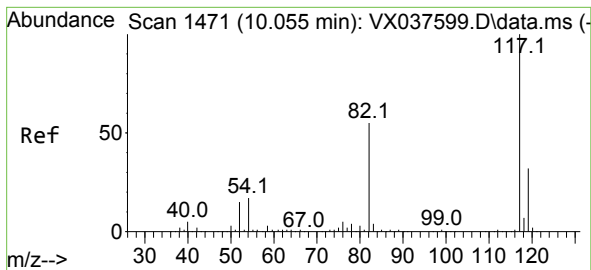


#62  
 4-Bromofluorobenzene  
 Concen: 42.289 ug/l  
 RT: 11.079 min Scan# 1639  
 Delta R.T. -0.000 min  
 Lab File: VX037609.D  
 Acq: 08 Sep 2023 18:13



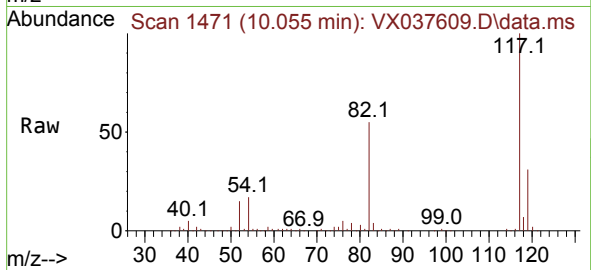
Tgt Ion: 95 Resp: 85430  
 Ion Ratio Lower Upper  
 95 100  
 174 74.7 0.0 135.6  
 176 72.8 0.0 131.0



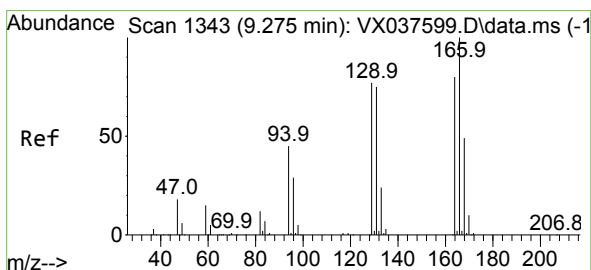
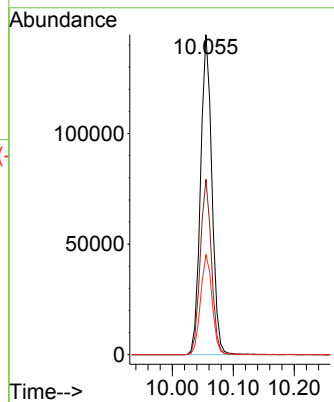
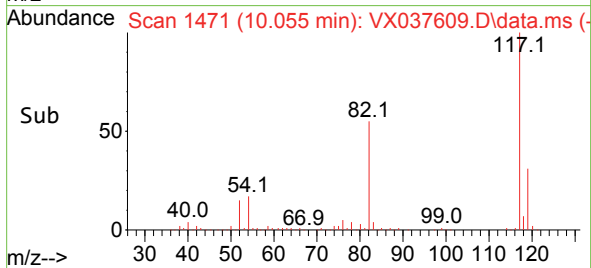


#63  
 Chlorobenzene-d5  
 Concen: 50.000 ug/l  
 RT: 10.055 min Scan# 14  
 Delta R.T. -0.000 min  
 Lab File: VX037609.D  
 Acq: 08 Sep 2023 18:13

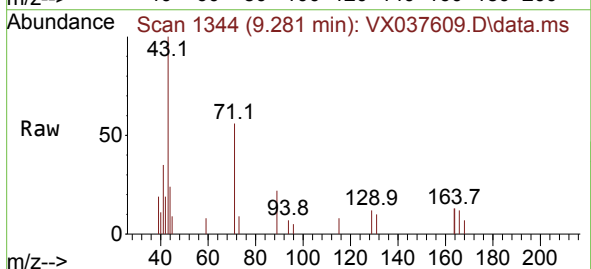
Instrument :  
 MSVOA\_X  
 ClientSampleId :



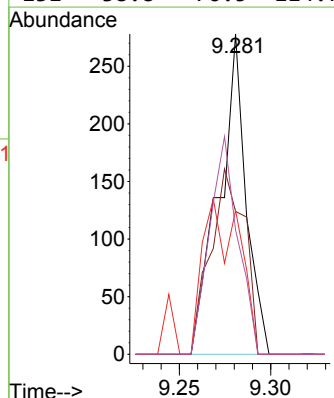
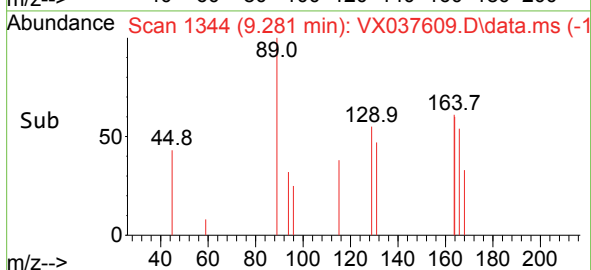
Tgt Ion:117 Resp: 186974  
 Ion Ratio Lower Upper  
 117 100  
 82 54.8 46.2 69.4  
 119 31.1 25.5 38.3



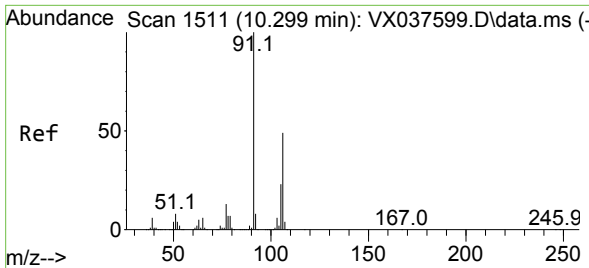
#64  
 Tetrachloroethene  
 Concen: 0.220 ug/l  
 RT: 9.281 min Scan# 1344  
 Delta R.T. 0.006 min  
 Lab File: VX037609.D  
 Acq: 08 Sep 2023 18:13



Tgt Ion:164 Resp: 288  
 Ion Ratio Lower Upper  
 164 100  
 166 44.6 102.7 154.1#  
 129 45.0 80.4 120.6#  
 131 38.8 76.5 114.7#

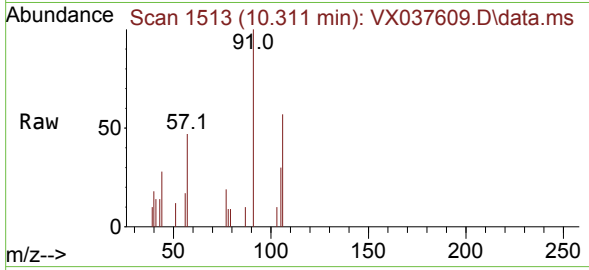




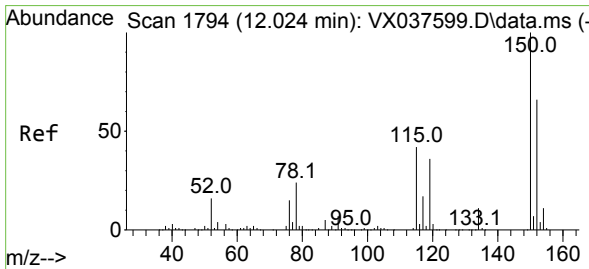
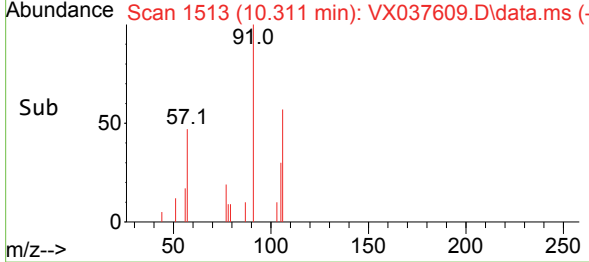
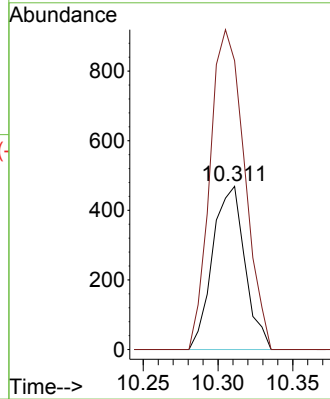


#68  
 m/p-Xylenes  
 Concen: 0.256 ug/l  
 RT: 10.311 min Scan# 11  
 Delta R.T. 0.012 min  
 Lab File: VX037609.D  
 Acq: 08 Sep 2023 18:13

Instrument :  
 MSVOA\_X  
 ClientSampleId :

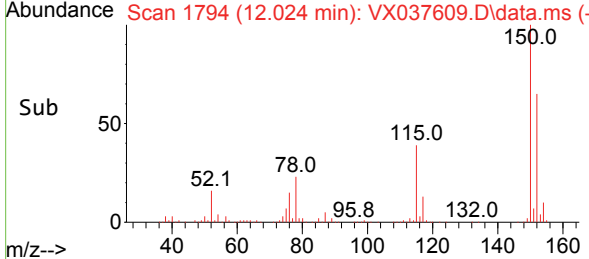
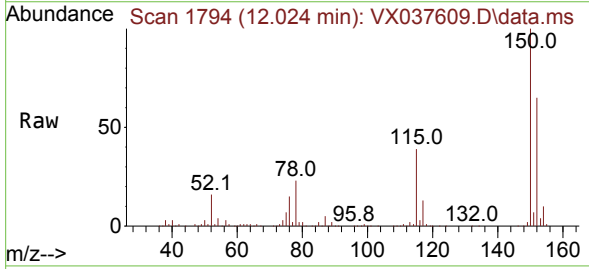
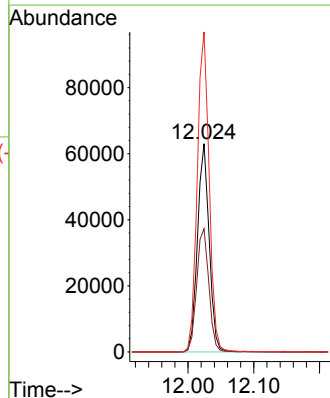


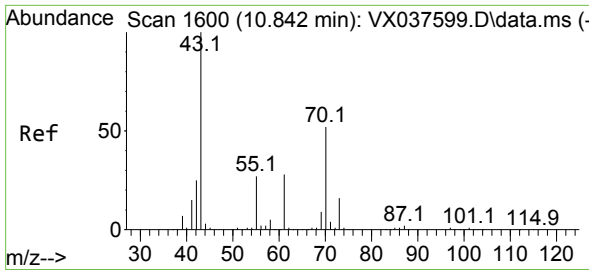
Tgt Ion:106 Resp: 703  
 Ion Ratio Lower Upper  
 106 100  
 91 209.7 165.5 248.3



#72  
 1,4-Dichlorobenzene-d4  
 Concen: 50.000 ug/l  
 RT: 12.024 min Scan# 1794  
 Delta R.T. -0.000 min  
 Lab File: VX037609.D  
 Acq: 08 Sep 2023 18:13

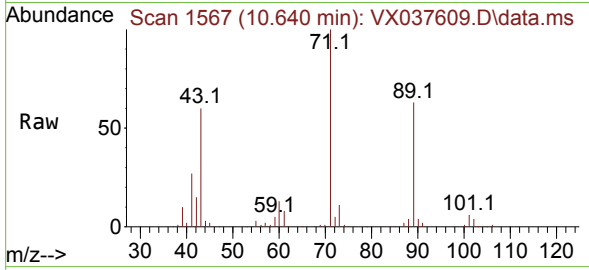
Tgt Ion:152 Resp: 77344  
 Ion Ratio Lower Upper  
 152 100  
 115 61.6 43.3 129.9  
 150 156.5 0.0 345.0



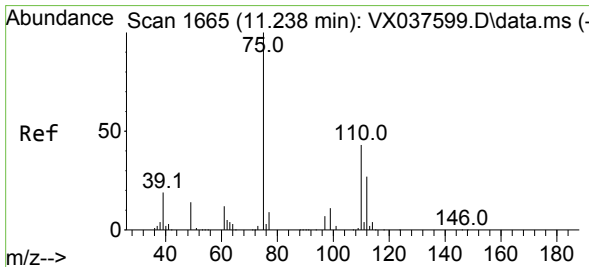
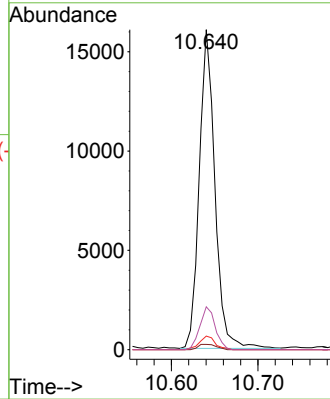
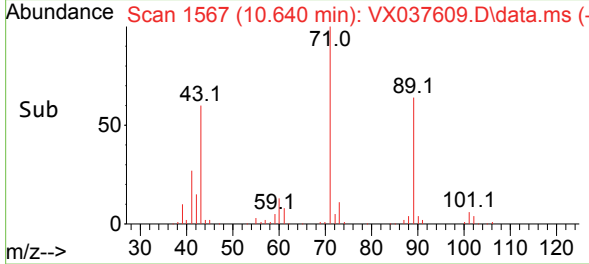


#74  
 N-amy1 acetate  
 Concen: 10.047 ug/l  
 RT: 10.640 min Scan# 1639  
 Delta R.T. -0.201 min  
 Lab File: VX037609.D  
 Acq: 08 Sep 2023 18:13

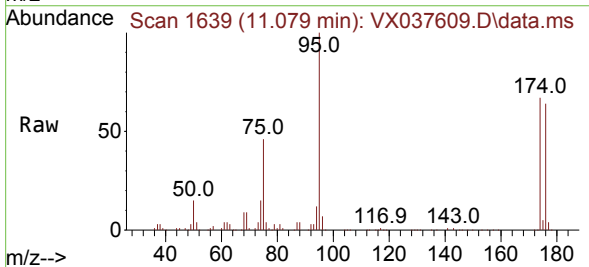
Instrument : MSVOA\_X  
 ClientSampleId :



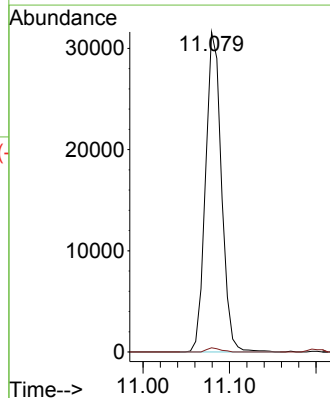
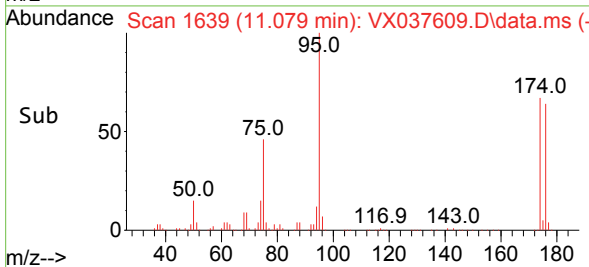
Tgt Ion: 43 Resp: 20121  
 Ion Ratio Lower Upper  
 43 100  
 70 2.0 32.9 49.3#  
 55 4.3 19.3 28.9#  
 61 13.2 18.8 28.2#

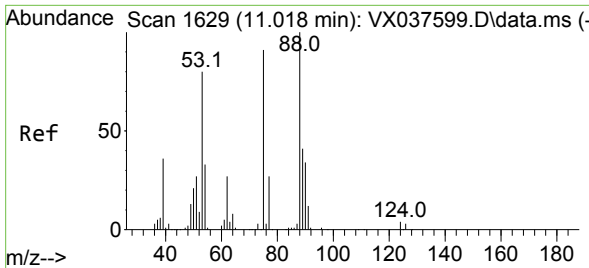


#76  
 1,2,3-Trichloropropane  
 Concen: 22.264 ug/l  
 RT: 11.079 min Scan# 1639  
 Delta R.T. -0.159 min  
 Lab File: VX037609.D  
 Acq: 08 Sep 2023 18:13



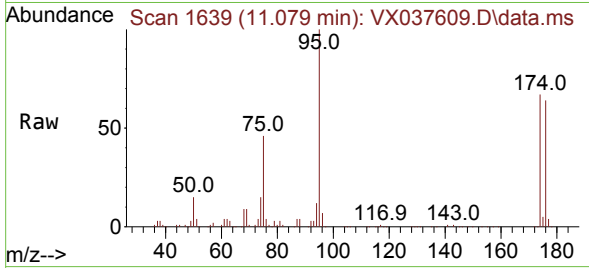
Tgt Ion: 75 Resp: 40398  
 Ion Ratio Lower Upper  
 75 100  
 77 1.1 19.1 57.5#



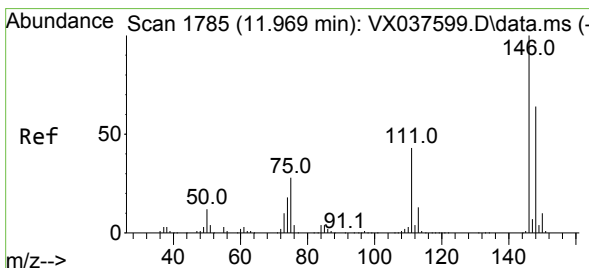
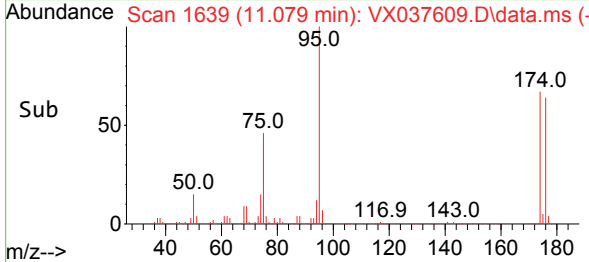
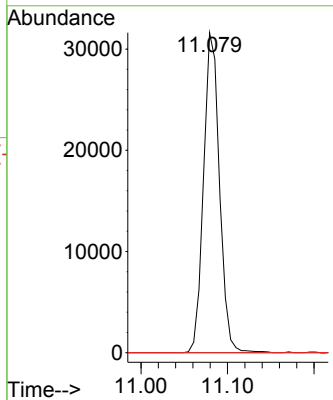


#81  
 trans-1,4-Dichloro-2-butene  
 Concen: 66.446 ug/l  
 RT: 11.079 min Scan# 1  
 Delta R.T. 0.061 min  
 Lab File: VX037609.D  
 Acq: 08 Sep 2023 18:13

Instrument :  
 MSVOA\_X  
 ClientSampleId :

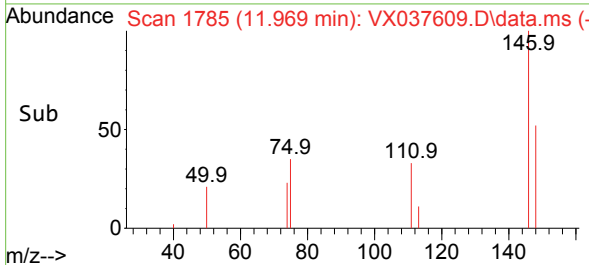
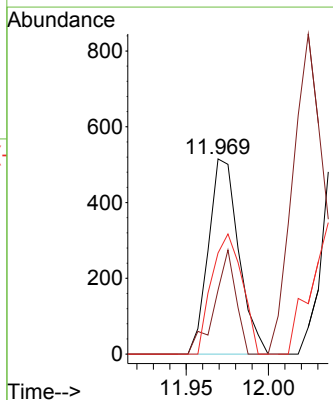
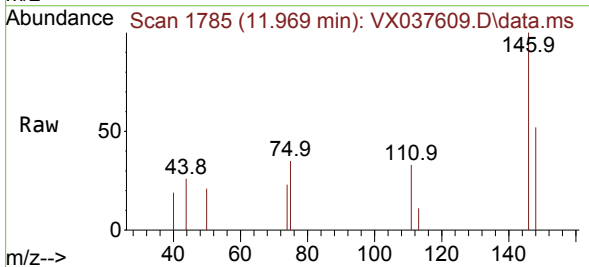


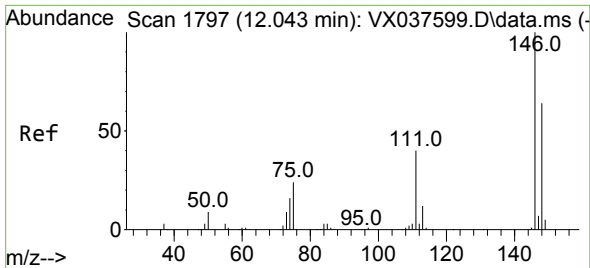
Tgt Ion: 75 Resp: 40398  
 Ion Ratio Lower Upper  
 75 100  
 53 0.0 90.5 135.7#  
 89 0.0 36.9 55.3#



#87  
 1,3-Dichlorobenzene  
 Concen: 0.241 ug/l  
 RT: 11.969 min Scan# 1785  
 Delta R.T. -0.000 min  
 Lab File: VX037609.D  
 Acq: 08 Sep 2023 18:13

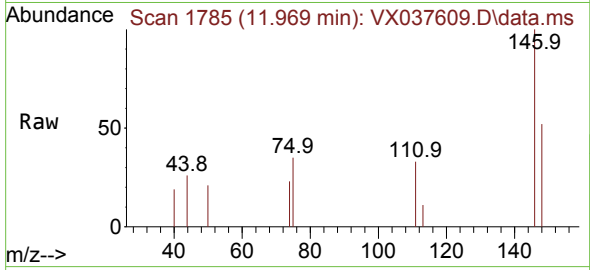
Tgt Ion: 146 Resp: 659  
 Ion Ratio Lower Upper  
 146 100  
 111 37.6 22.1 66.1  
 148 62.1 31.8 95.3



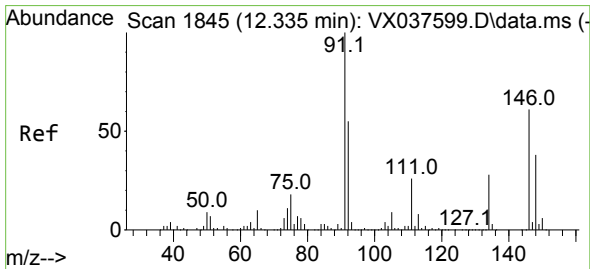
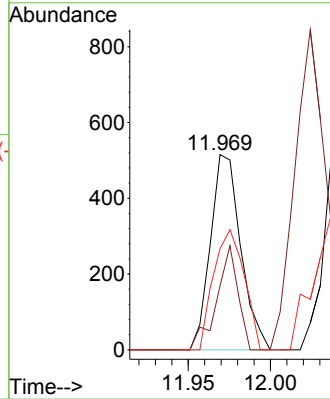
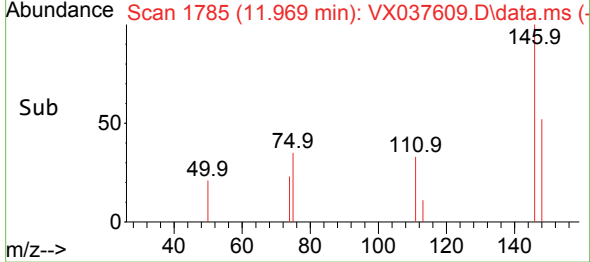


#88  
 1,4-Dichlorobenzene  
 Concen: 0.237 ug/l  
 RT: 11.969 min Scan# 11  
 Delta R.T. -0.073 min  
 Lab File: VX037609.D  
 Acq: 08 Sep 2023 18:13

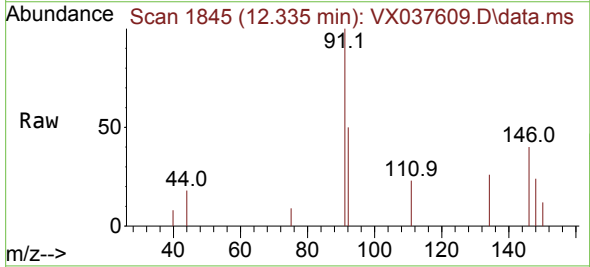
Instrument :  
 MSVOA\_X  
 ClientSampleId :



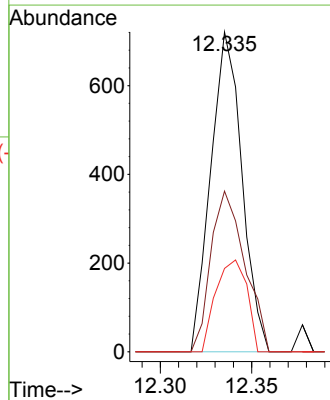
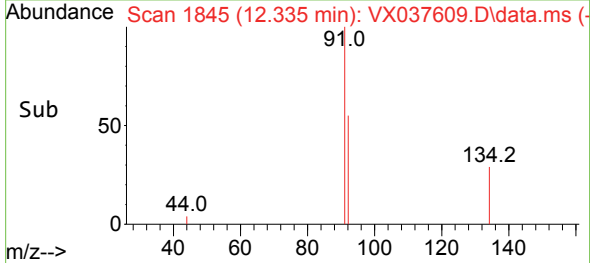
Tgt Ion:146 Resp: 659  
 Ion Ratio Lower Upper  
 146 100  
 111 37.6 21.3 63.7  
 148 62.1 31.8 95.4

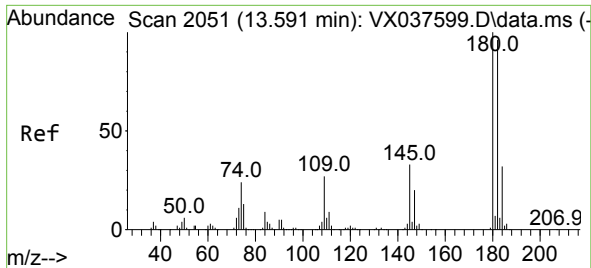


#89  
 n-Butylbenzene  
 Concen: 0.206 ug/l  
 RT: 12.335 min Scan# 1845  
 Delta R.T. -0.000 min  
 Lab File: VX037609.D  
 Acq: 08 Sep 2023 18:13



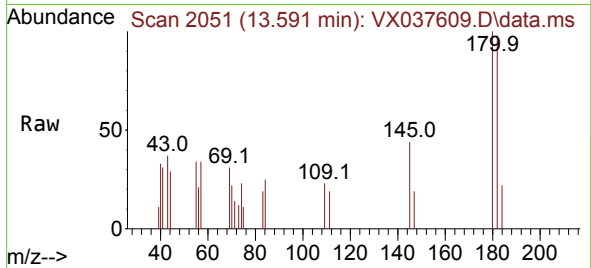
Tgt Ion: 91 Resp: 857  
 Ion Ratio Lower Upper  
 91 100  
 92 54.7 27.4 82.0  
 134 28.6 12.6 37.8



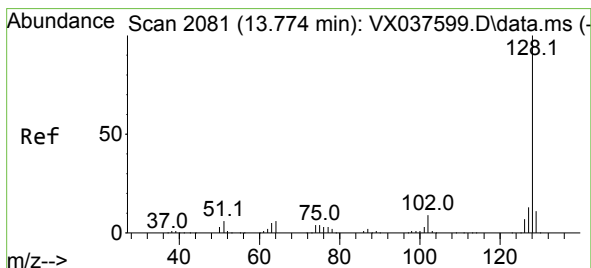
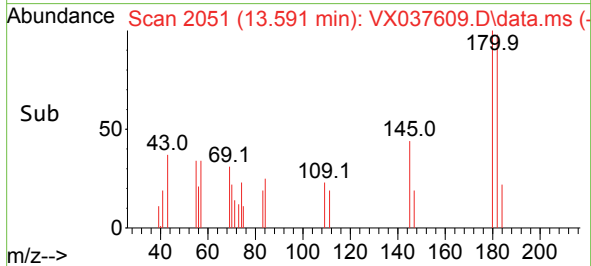
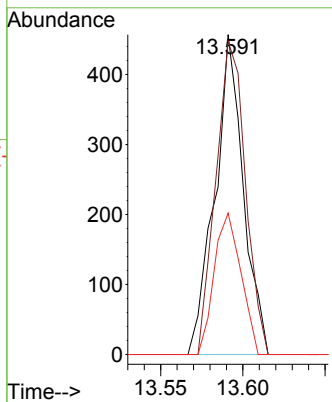


#93  
 1,2,4-Trichlorobenzene  
 Concen: 0.333 ug/l  
 RT: 13.591 min Scan# 2051  
 Delta R.T. -0.000 min  
 Lab File: VX037609.D  
 Acq: 08 Sep 2023 18:13

Instrument : MSVOA\_X  
 ClientSampleId :

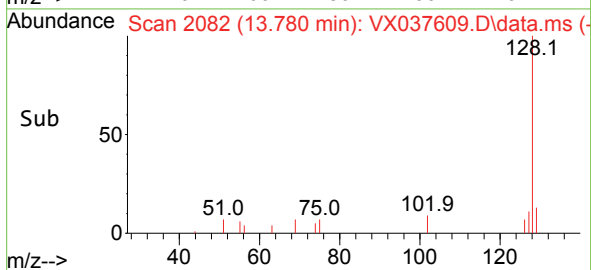
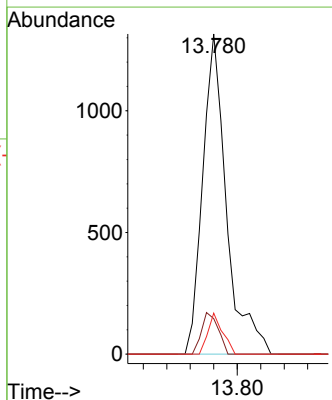
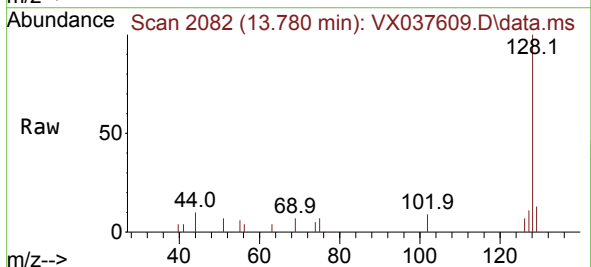


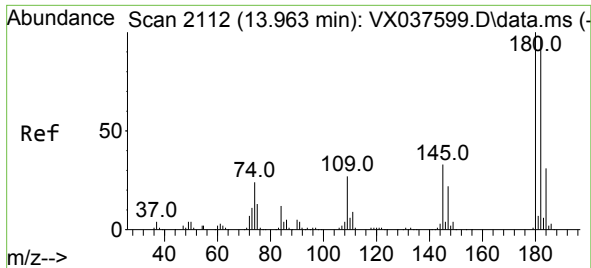
Tgt Ion:180 Resp: 549  
 Ion Ratio Lower Upper  
 180 100  
 182 101.6 48.3 144.8  
 145 41.3 18.0 54.0



#95  
 Naphthalene  
 Concen: 0.321 ug/l  
 RT: 13.780 min Scan# 2082  
 Delta R.T. 0.006 min  
 Lab File: VX037609.D  
 Acq: 08 Sep 2023 18:13

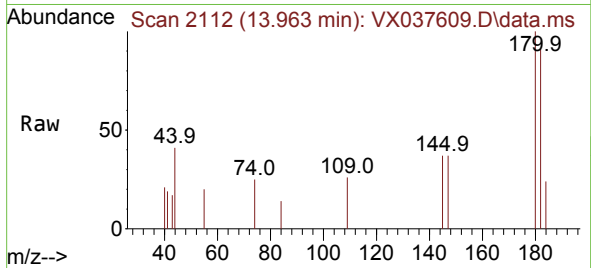
Tgt Ion:128 Resp: 1849  
 Ion Ratio Lower Upper  
 128 100  
 127 9.1 10.3 15.5#  
 129 7.8 8.8 13.2#





#96  
 1,2,3-Trichlorobenzene  
 Concen: 0.348 ug/l  
 RT: 13.963 min Scan# 21  
 Delta R.T. -0.000 min  
 Lab File: VX037609.D  
 Acq: 08 Sep 2023 18:13

Instrument :  
 MSVOA\_X  
 ClientSampleId :



Tgt Ion:180 Resp: 592

Ion	Ratio	Lower	Upper
180	100		
182	87.8	46.9	140.6
145	31.3	17.8	53.5

