

Data Path : Z:\VOASRV\HPCHEM1\MSVOA_X\DATA\VX090920\
 Data File : VX018317.D
 Acq On : 09 Sep 2020 13:13
 Operator : JC/SP
 Sample : L3877-03DL 10X
 Misc : 5.0mL/MSVOA_X/WATER
 ALS Vial : 9 Sample Multiplier: 1

Instrument :
 MSVOA_X
 ClientSampleId :
 TP-1DL

Quant Time: Sep 09 15:11:12 2020
 Quant Method : Z:\VOASRV\HPCHEM1\MSVOA_X\METHOD\82X082120W.M
 Quant Title : SW846 8260
 QLast Update : Fri Aug 21 03:03:56 2020
 Response via : Initial Calibration

| Internal Standards | R.T. | QIon | Response | Conc | Units | Dev(Min) |
|----------------------------|-------|------|----------|-------|-------|----------|
| 1) Pentafluorobenzene | 5.63 | 168 | 435126 | 50.00 | ug/l | 0.00 |
| 34) 1,4-Difluorobenzene | 6.83 | 114 | 718663 | 50.00 | ug/l | 0.00 |
| 63) Chlorobenzene-d5 | 10.10 | 117 | 669325 | 50.00 | ug/l | 0.00 |
| 72) 1,4-Dichlorobenzene-d4 | 12.06 | 152 | 359796 | 50.00 | ug/l | 0.00 |

System Monitoring Compounds

| | | | | | | |
|---------------------------|--------|-----|----------|-------|---------|------|
| 33) 1,2-Dichloroethane-d4 | 6.03 | 65 | 317469 | 52.56 | ug/l | 0.00 |
| Spiked Amount | 50.000 | | Recovery | = | 105.12% | |
| 35) Dibromofluoromethane | 5.46 | 113 | 242869 | 49.62 | ug/l | 0.00 |
| Spiked Amount | 50.000 | | Recovery | = | 99.24% | |
| 50) Toluene-d8 | 8.70 | 98 | 862349 | 47.30 | ug/l | 0.00 |
| Spiked Amount | 50.000 | | Recovery | = | 94.60% | |
| 62) 4-Bromofluorobenzene | 11.12 | 95 | 334367 | 46.62 | ug/l | 0.00 |
| Spiked Amount | 50.000 | | Recovery | = | 93.24% | |

Target Compounds

| | | | | | | Qvalue |
|--------------------------------|-------|-----|---------|-----------|--------|--------|
| 5) Bromomethane | 1.65 | 94 | 810 | 0.302 | ug/l # | 69 |
| 10) Methyl Iodide | 2.49 | 142 | 724 | 5.434 | ug/l # | 77 |
| 11) Tert butyl alcohol | 2.99 | 59 | 1367 | 1.164 | ug/l # | 58 |
| 13) Acrolein | 2.26 | 56 | 138 | 0.283 | ug/l # | 14 |
| 16) Acetone | 2.42 | 43 | 9969 | 4.235 | ug/l # | 84 |
| 17) Carbon Disulfide | 2.56 | 76 | 4531 | 0.352 | ug/l # | 89 |
| 18) Methyl Acetate | 2.75 | 43 | 1558 | 0.274 | ug/l # | 80 |
| 20) Methylene Chloride | 2.84 | 84 | 3814 | Below Cal | # | 87 |
| 25) 2-Butanone | 4.65 | 43 | 5136 | 1.328 | ug/l # | 87 |
| 27) cis-1,2-Dichloroethene | 4.57 | 96 | 8618 | 1.588 | ug/l | 92 |
| 29) Tetrahydrofuran | 5.09 | 42 | 831 | 0.337 | ug/l # | 68 |
| 36) 1,1-Dichloropropene | 5.62 | 75 | 33978 | 5.126 | ug/l # | 53 |
| 38) Carbon Tetrachloride | 5.63 | 117 | 45617 | 6.107 | ug/l # | 18 |
| 40) Benzene | 6.12 | 78 | 4798986 | 246.389 | ug/l | 97 |
| 42) 1,2-Dichloroethane | 6.11 | 62 | 45962 | 6.159 | ug/l | 76 |
| 43) Isopropyl Acetate | 6.42 | 43 | 12445 | 1.001 | ug/l # | 84 |
| 44) Trichloroethene | 7.19 | 130 | 1433 | 0.260 | ug/l | 72 |
| 49) 1,4-Dioxane | 7.70 | 88 | 103 | 0.919 | ug/l # | 1 |
| 52) Toluene | 8.77 | 92 | 22211 | 1.798 | ug/l | 98 |
| 67) Ethyl Benzene | 10.24 | 91 | 1893874 | 83.308 | ug/l | 97 |
| 68) m/p-Xylenes | 10.34 | 106 | 540243 | 63.669 | ug/l | 100 |
| 69) o-Xylene | 10.68 | 106 | 144621 | 17.582 | ug/l | 94 |
| 70) Styrene | 10.68 | 104 | 11032 | 0.788 | ug/l # | 1 |
| 73) Isopropylbenzene | 11.00 | 105 | 58195 | 2.452 | ug/l | 100 |
| 76) 1,2,3-Trichloropropane | 11.12 | 75 | 176163 | 22.010 | ug/l # | 36 |
| 78) n-propylbenzene | 11.34 | 91 | 90259 | 3.349 | ug/l | 99 |
| 79) 2-Chlorotoluene | 11.65 | 91 | 26147 | 1.571 | ug/l | 72 |
| 80) 1,3,5-Trimethylbenzene | 11.49 | 105 | 238649 | 12.237 | ug/l | 100 |
| 81) trans-1,4-Dichloro-2-buten | 11.12 | 75 | 176163 | 59.445 | ug/l # | 12 |
| 82) 4-Chlorotoluene | 11.65 | 91 | 26847 | 1.356 | ug/l | 89 |
| 83) tert-Butylbenzene | 12.01 | 119 | 29457 | 1.531 | ug/l | 71 |
| 84) 1,2,4-Trimethylbenzene | 11.79 | 105 | 846910 | 42.475 | ug/l | 100 |
| 85) sec-Butylbenzene | 11.79 | 105 | 846910 | 38.695 | ug/l # | 56 |
| 86) p-Isopropyltoluene | 12.01 | 119 | 29457 | 1.465 | ug/l | 83 |

Data Path : Z:\VOASRV\HPCHEM1\MSVOA_X\DATA\VX090920\
 Data File : VX018317.D
 Acq On : 09 Sep 2020 13:13
 Operator : JC/SP
 Sample : L3877-03DL 10X
 Misc : 5.0mL/MSVOA_X/WATER
 ALS Vial : 9 Sample Multiplier: 1

Instrument :
 MSVOA_X
 ClientSampleId :
 TP-1DL

Quant Time: Sep 09 15:11:12 2020
 Quant Method : Z:\VOASRV\HPCHEM1\MSVOA_X\METHOD\82X082120W.M
 Quant Title : SW846 8260
 QLast Update : Fri Aug 21 03:03:56 2020
 Response via : Initial Calibration

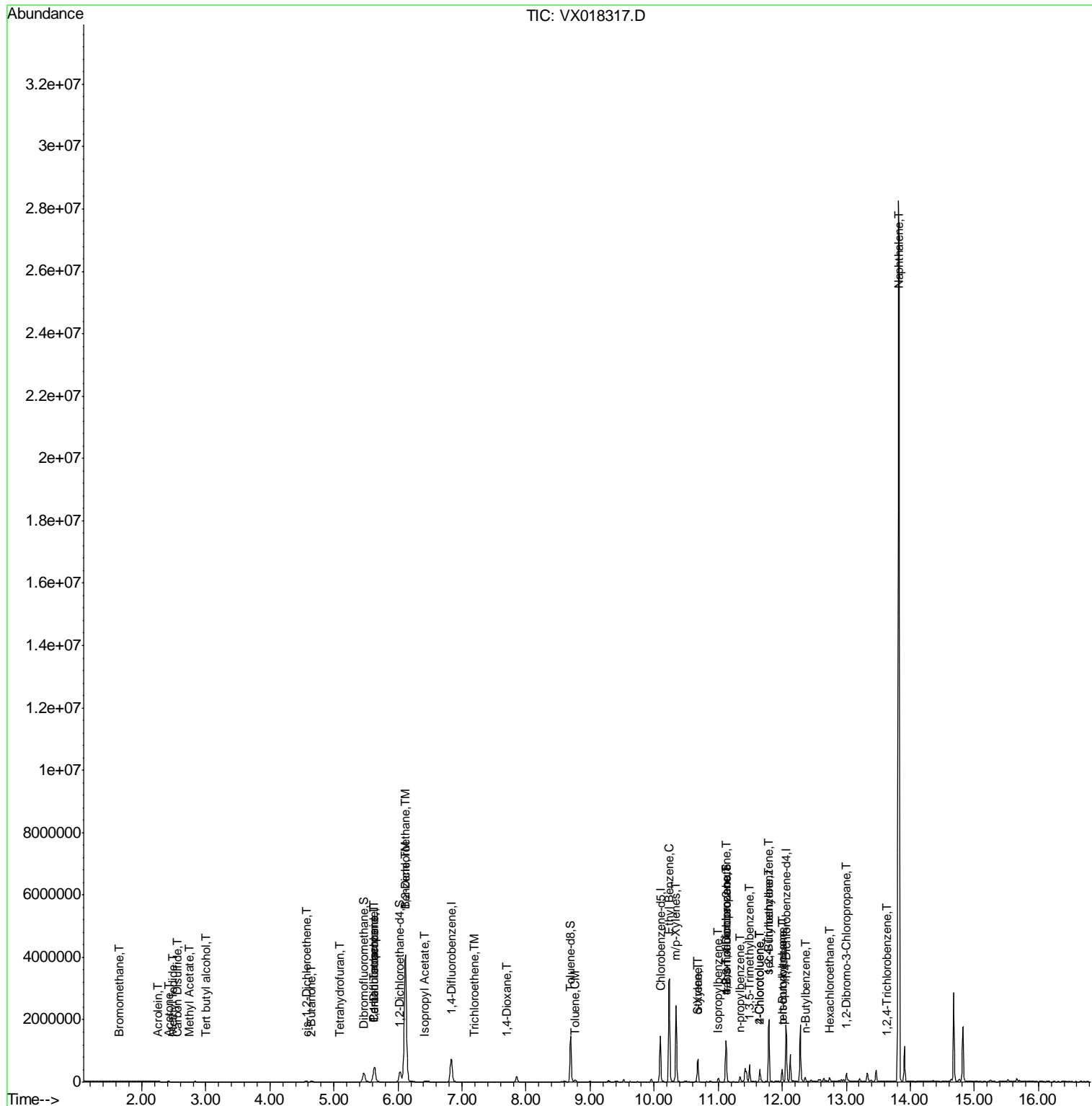
| Internal Standards | R.T. | QIon | Response | Conc | Units | Dev(Min) |
|--------------------------------|-------|------|----------|---------|--------|----------|
| 89) n-Butylbenzene | 12.35 | 91 | 16152 | 0.880 | ug/l # | 16 |
| 90) Hexachloroethane | 12.74 | 117 | 48332 | 12.219 | ug/l # | 11 |
| 92) 1,2-Dibromo-3-Chloropropan | 13.01 | 75 | 3622 | 1.730 | ug/l # | 3 |
| 93) 1,2,4-Trichlorobenzene | 13.63 | 180 | 1707 | 0.236 | ug/l # | 76 |
| 95) Naphthalene | 13.82 | 128 | 14098221 | 592.531 | ug/l # | 87 |

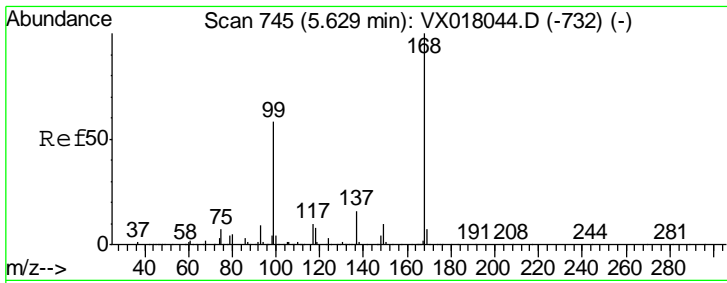
(#) = qualifier out of range (m) = manual integration (+) = signals summed

Data Path : Z:\VOASRV\HPCHEM1\MSVOA_X\DATA\VX090920\
 Data File : VX018317.D
 Acq On : 09 Sep 2020 13:13
 Operator : JC/SP
 Sample : L3877-03DL 10X
 Misc : 5.0mL/MSVOA_X/WATER
 ALS Vial : 9 Sample Multiplier: 1

Instrument :
 MSVOA_X
 ClientSampled :
 TP-1DL

Quant Time: Sep 09 15:11:12 2020
 Quant Method : Z:\VOASRV\HPCHEM1\MSVOA_X\METHOD\82X082120W.M
 Quant Title : SW846 8260
 QLast Update : Fri Aug 21 03:03:56 2020
 Response via : Initial Calibration

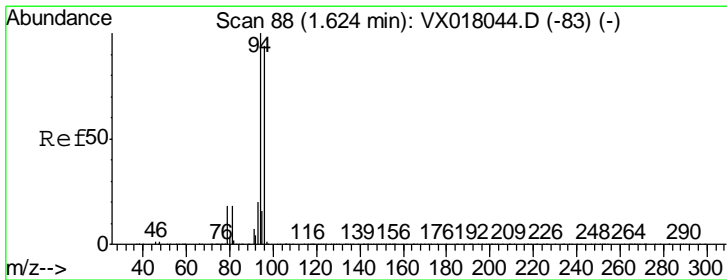
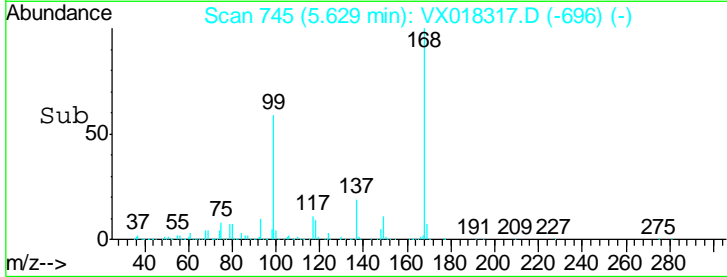
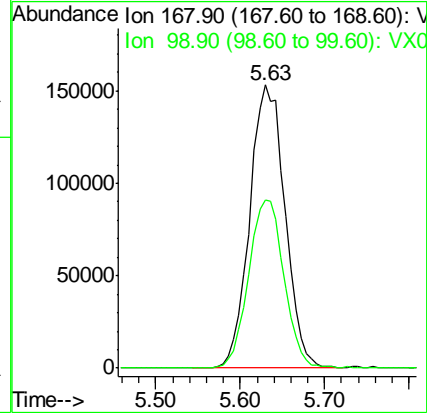
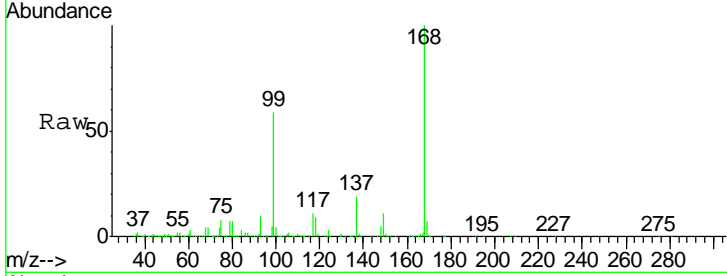




#1
 Pentafluorobenzene
 Concen: 50.000 ug/l
 RT: 5.63 min Scan# 745
 Delta R.T. -0.00 min
 Lab File: VX018317.D
 Acq: 09 Sep 2020 13:13

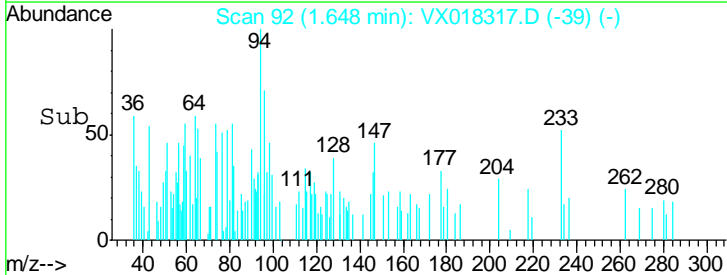
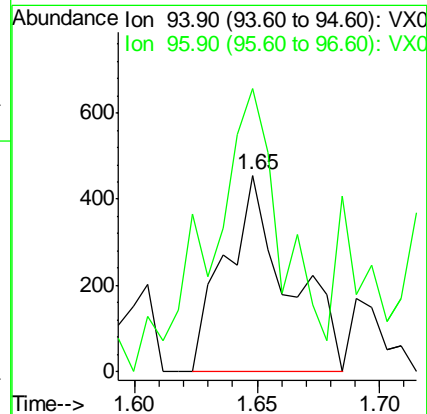
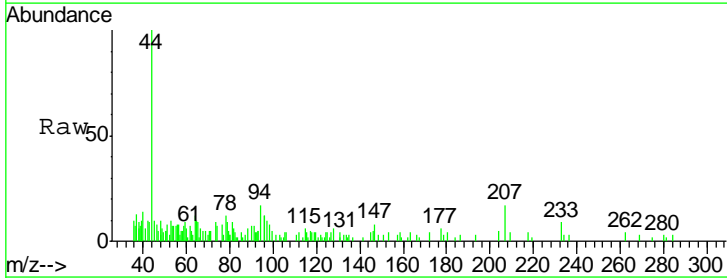
Instrument :
 MSVOA_X
 ClientSampled :
 TP-1DL

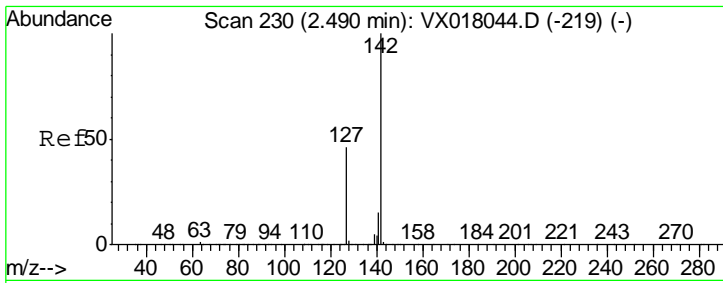
Tgt Ion: 168 Resp: 435126
 Ion Ratio Lower Upper
 168 100
 99 59.4 46.3 69.5



#5
 Bromomethane
 Concen: 0.302 ug/l
 RT: 1.65 min Scan# 92
 Delta R.T. 0.02 min
 Lab File: VX018317.D
 Acq: 09 Sep 2020 13:13

Tgt Ion: 94 Resp: 810
 Ion Ratio Lower Upper
 94 100
 96 63.7 74.8 112.2#



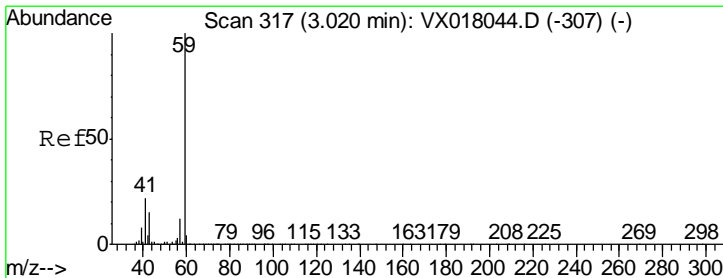
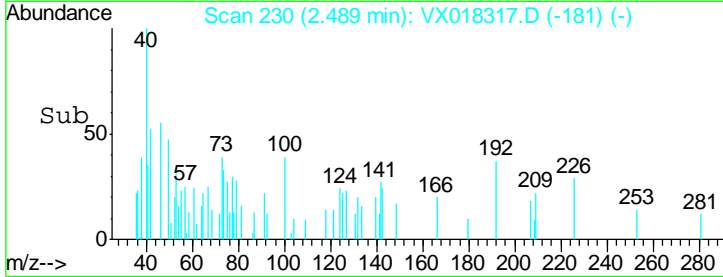
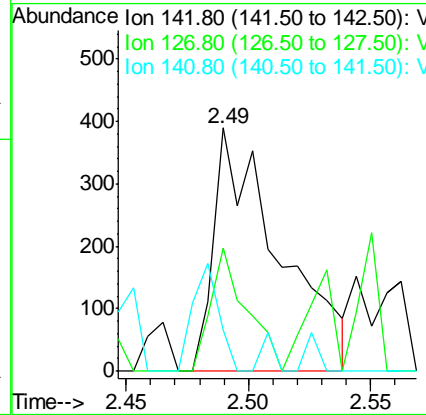
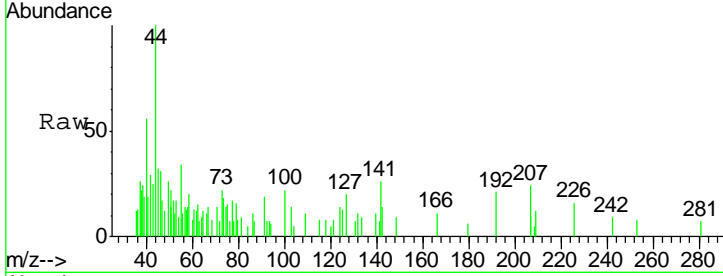


#10
 Methyl Iodide
 Concen: 5.434 ug/l
 RT: 2.49 min Scan# 230
 Delta R.T. 0.00 min
 Lab File: VX018317.D
 Acq: 09 Sep 2020 13:13

Instrument :
 MSVOA_X
 ClientSampled :
 TP-1DL

Tgt Ion: 142 Resp: 724

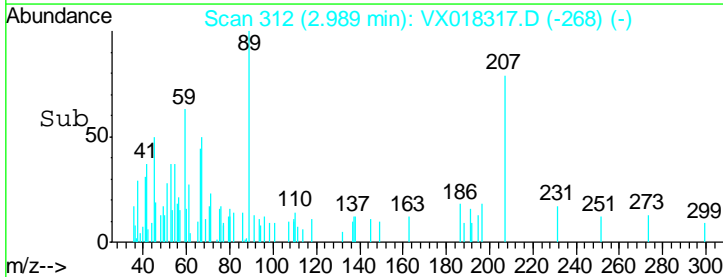
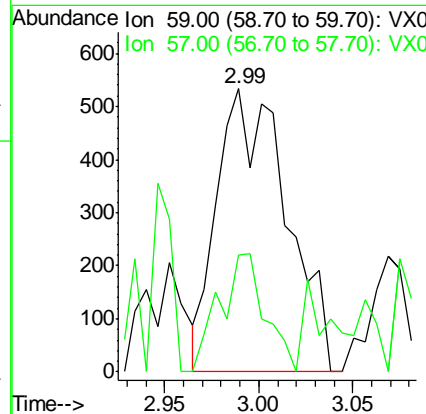
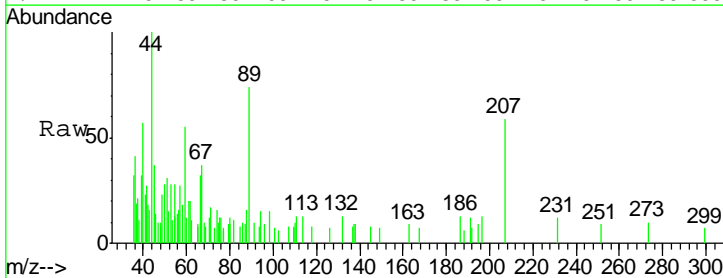
| Ion | Ratio | Lower | Upper |
|-----|-------|-------|-------|
| 142 | 100 | | |
| 127 | 27.8 | 37.0 | 55.6# |
| 141 | 17.5 | 11.5 | 17.3# |

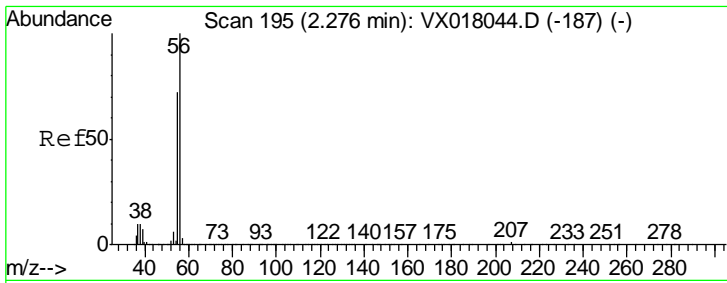


#11
 Tert butyl alcohol
 Concen: 1.164 ug/l
 RT: 2.99 min Scan# 312
 Delta R.T. -0.03 min
 Lab File: VX018317.D
 Acq: 09 Sep 2020 13:13

Tgt Ion: 59 Resp: 1367

| Ion | Ratio | Lower | Upper |
|-----|-------|-------|-------|
| 59 | 100 | | |
| 57 | 27.1 | 8.9 | 13.3# |

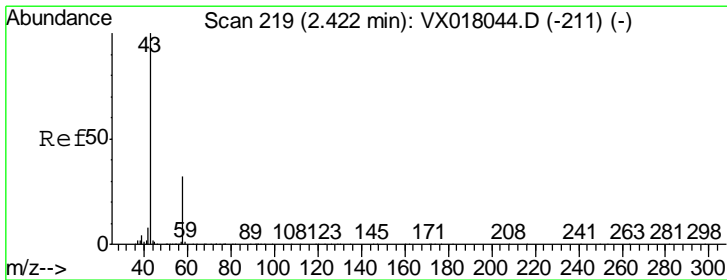
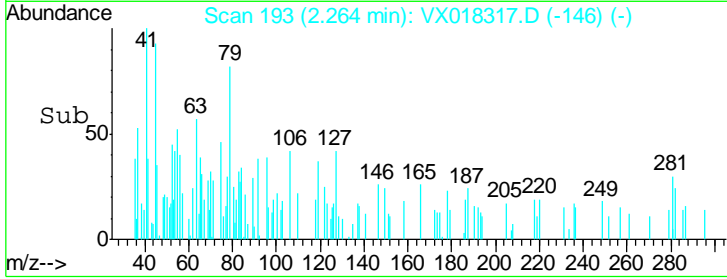
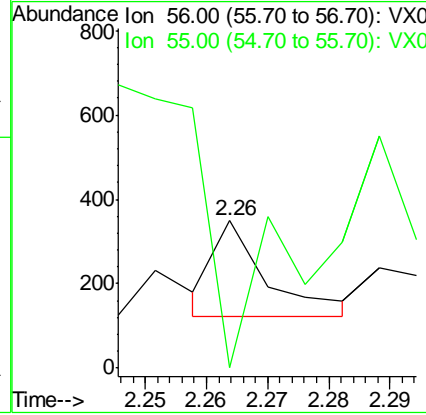
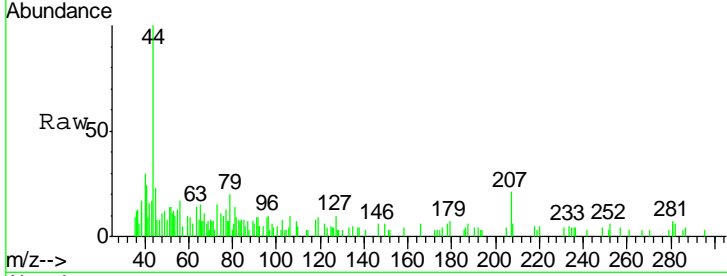




#13
 Acrolein
 Concen: 0.283 ug/l
 RT: 2.26 min Scan# 193
 Delta R.T. -0.01 min
 Lab File: VX018317.D
 Acq: 09 Sep 2020 13:13

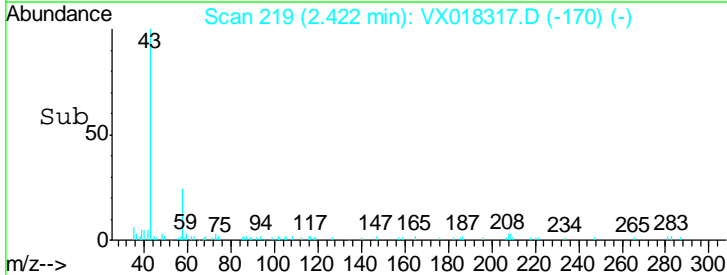
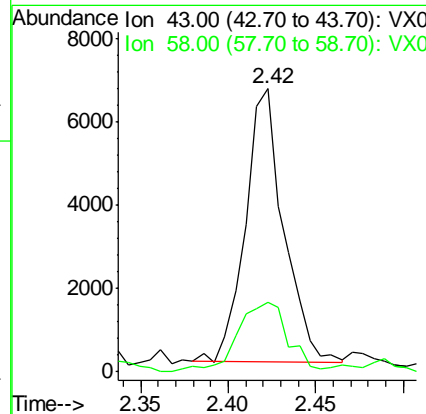
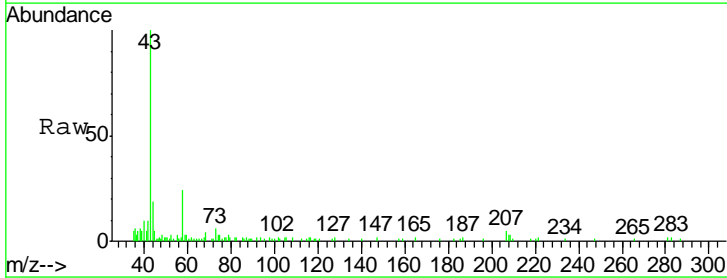
Instrument :
 MSVOA_X
 ClientSampled :
 TP-1DL

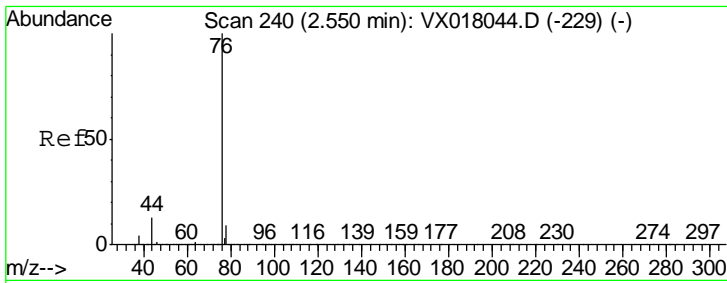
Tgt Ion: 56 Resp: 138
 Ion Ratio Lower Upper
 56 100
 55 0.0 57.0 85.6#



#16
 Acetone
 Concen: 4.235 ug/l
 RT: 2.42 min Scan# 219
 Delta R.T. -0.00 min
 Lab File: VX018317.D
 Acq: 09 Sep 2020 13:13

Tgt Ion: 43 Resp: 9969
 Ion Ratio Lower Upper
 43 100
 58 23.1 25.5 38.3#

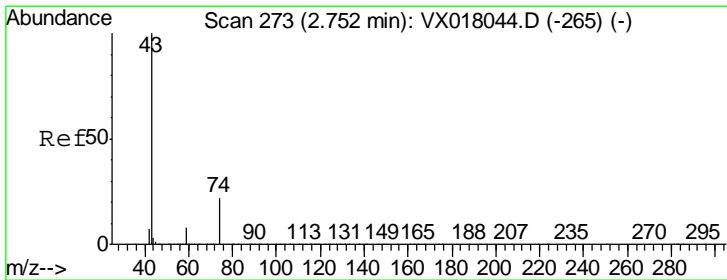
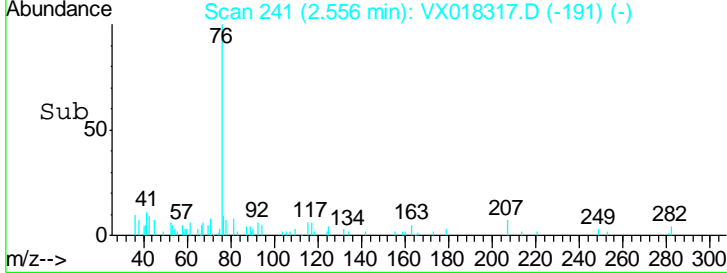
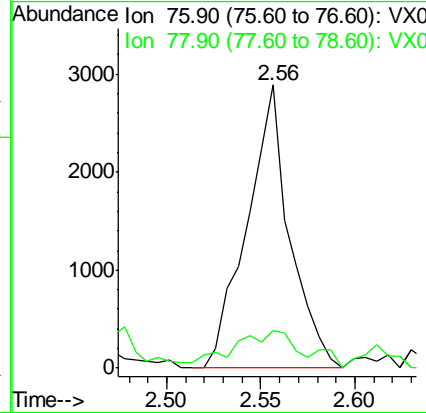
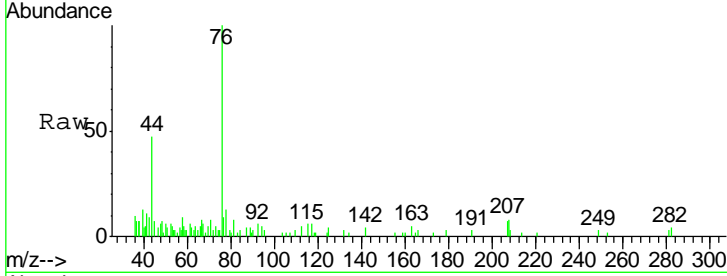




#17
 Carbon Disulfide
 Concen: 0.352 ug/l
 RT: 2.56 min Scan# 241
 Delta R.T. 0.01 min
 Lab File: VX018317.D
 Acq: 09 Sep 2020 13:13

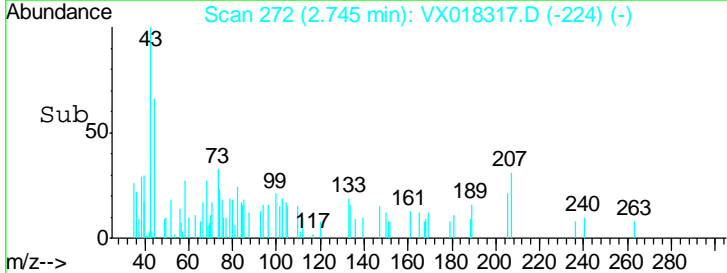
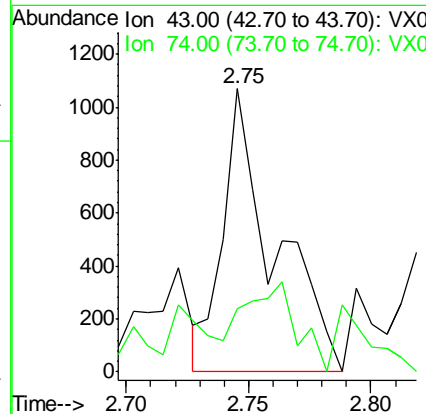
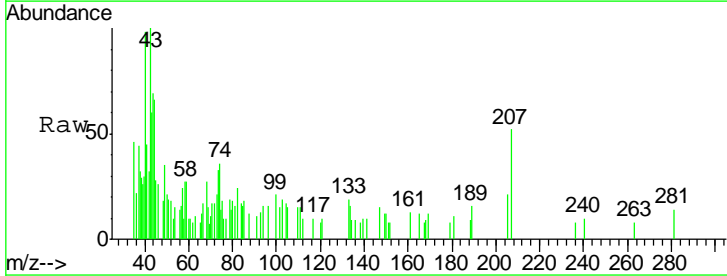
Instrument : MSVOA_X
 ClientSampled : TP-1DL

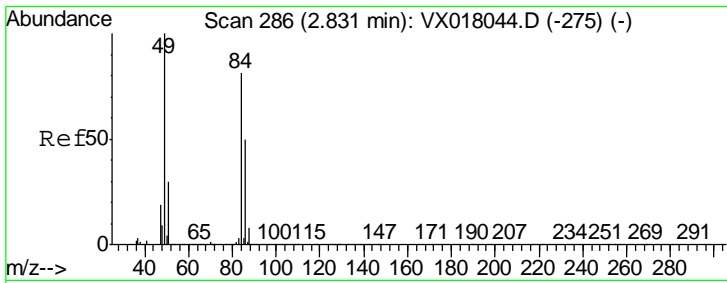
Tgt Ion: 76 Resp: 4531
 Ion Ratio Lower Upper
 76 100
 78 13.2 7.4 11.0#



#18
 Methyl Acetate
 Concen: 0.274 ug/l
 RT: 2.75 min Scan# 272
 Delta R.T. -0.01 min
 Lab File: VX018317.D
 Acq: 09 Sep 2020 13:13

Tgt Ion: 43 Resp: 1558
 Ion Ratio Lower Upper
 43 100
 74 32.7 18.2 27.4#

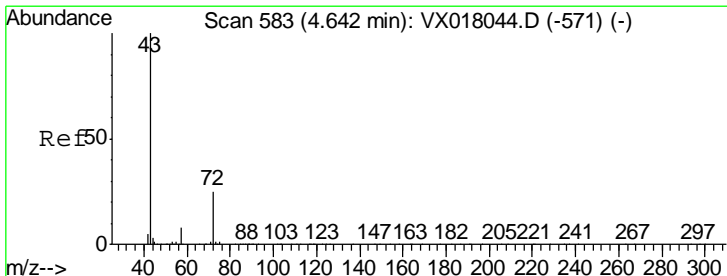
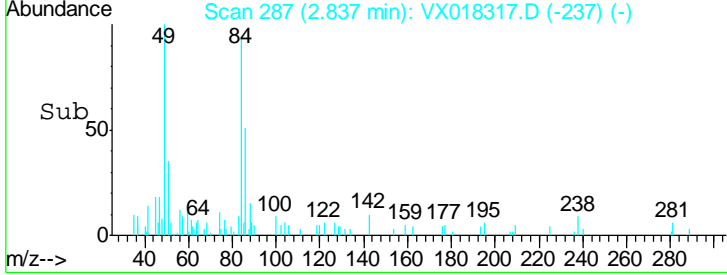
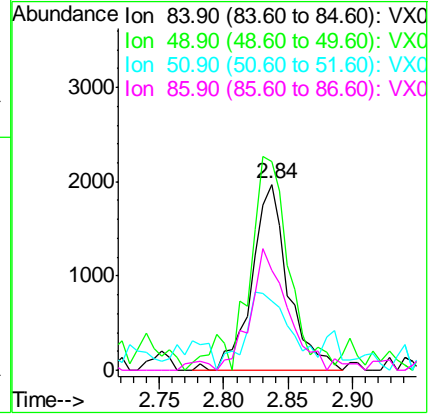
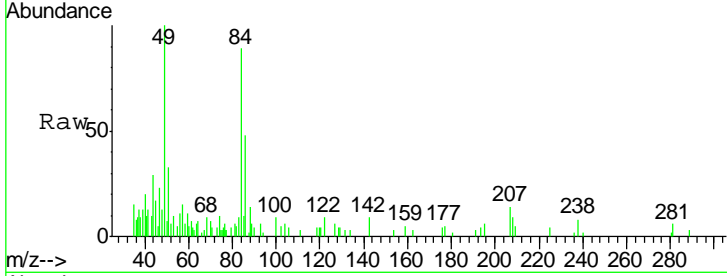




#20
 Methylene Chloride
 Concen: Below Cal
 RT: 2.84 min Scan# 287
 Delta R.T. 0.01 min
 Lab File: VX018317.D
 Acq: 09 Sep 2020 13:13

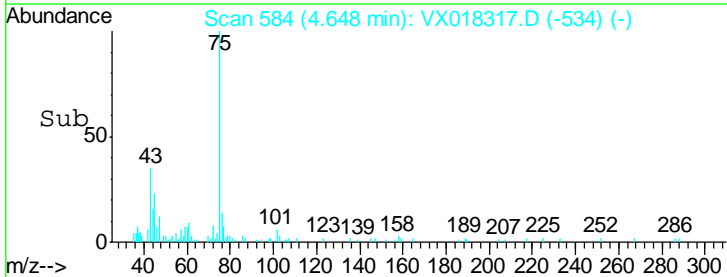
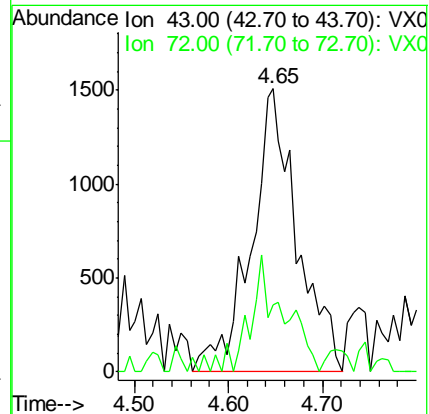
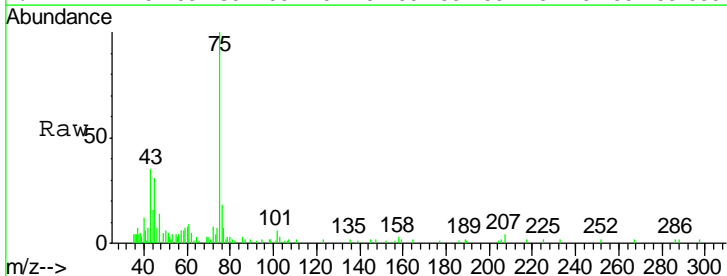
Instrument :
 MSVOA_X
ClientSampled :
 TP-1DL

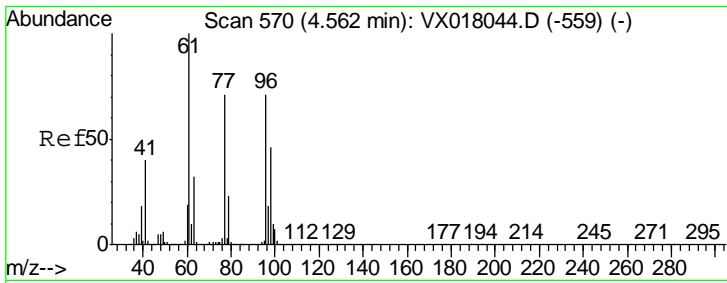
| Tgt Ion | Resp | Lower | Upper |
|---------|-------|-------|-------|
| 84 | 3814 | | |
| 84 | 100 | | |
| 49 | 108.5 | 98.6 | 148.0 |
| 51 | 31.7 | 29.6 | 44.4 |
| 86 | 49.4 | 49.8 | 74.6# |



#25
 2-Butanone
 Concen: 1.328 ug/l
 RT: 4.65 min Scan# 584
 Delta R.T. 0.01 min
 Lab File: VX018317.D
 Acq: 09 Sep 2020 13:13

| Tgt Ion | Resp | Lower | Upper |
|---------|------|-------|-------|
| 43 | 5136 | | |
| 43 | 100 | | |
| 72 | 18.4 | 19.8 | 29.6# |

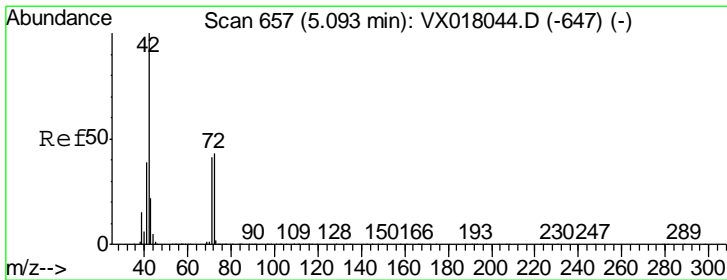
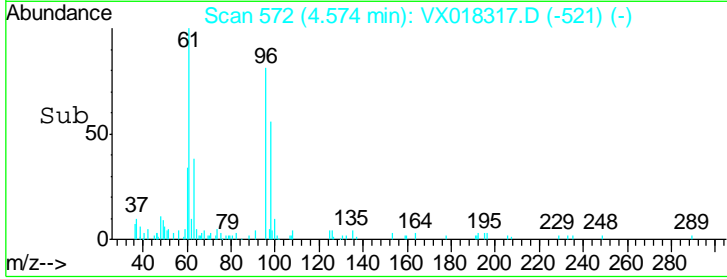
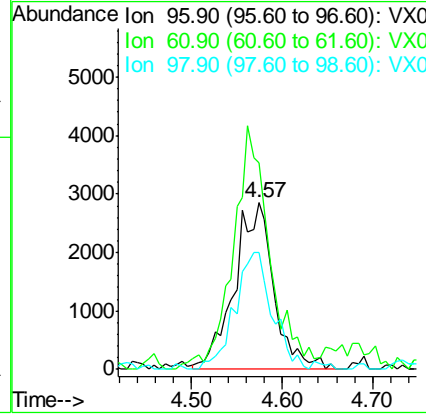
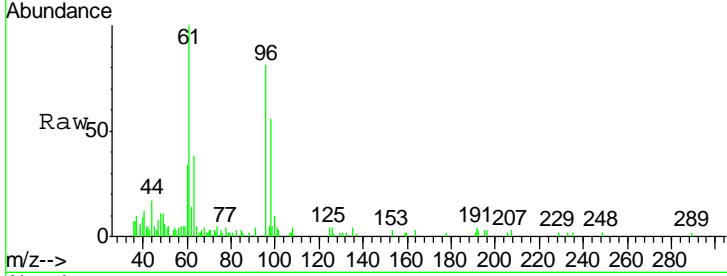




#27
 cis-1,2-Dichloroethene
 Concen: 1.588 ug/l
 RT: 4.57 min Scan# 572
 Delta R.T. 0.01 min
 Lab File: VX018317.D
 Acq: 09 Sep 2020 13:13

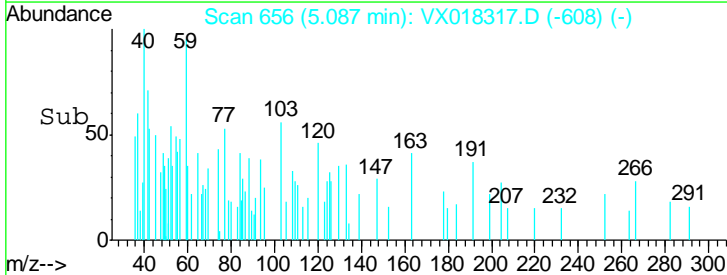
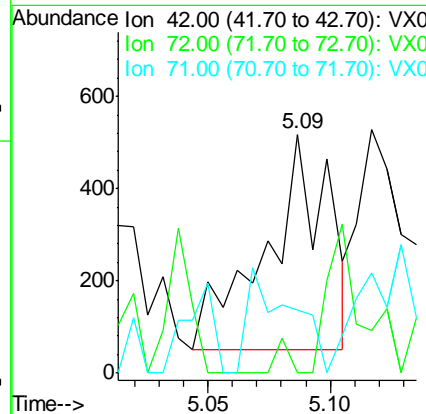
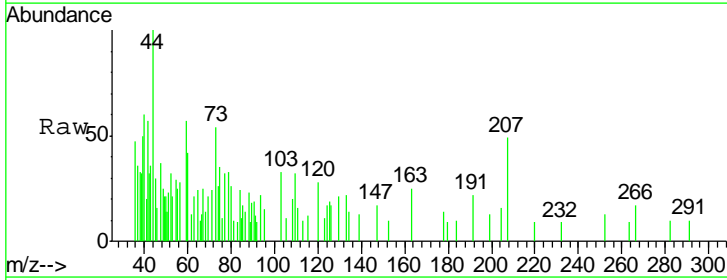
Instrument :
 MSVOA_X
 ClientSampled :
 TP-1DL

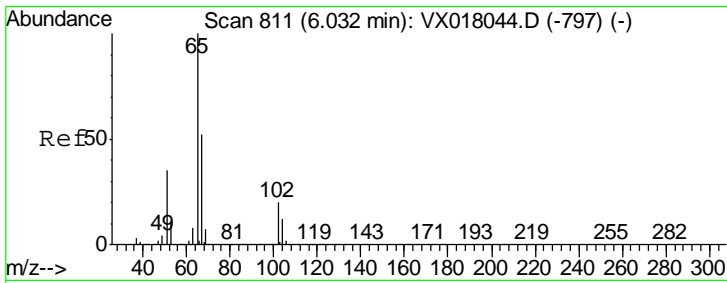
| Tgt Ion | Resp | Lower | Upper |
|---------|-------|-------|-------|
| 96 | 8618 | | |
| 61 | 135.2 | 0.0 | 296.6 |
| 98 | 66.2 | 0.0 | 130.2 |



#29
 Tetrahydrofuran
 Concen: 0.337 ug/l
 RT: 5.09 min Scan# 656
 Delta R.T. -0.01 min
 Lab File: VX018317.D
 Acq: 09 Sep 2020 13:13

| Tgt Ion | Resp | Lower | Upper |
|---------|------|-------|-------|
| 42 | 831 | | |
| 72 | 41.4 | 34.2 | 51.4 |
| 71 | 0.0 | 32.1 | 48.1# |

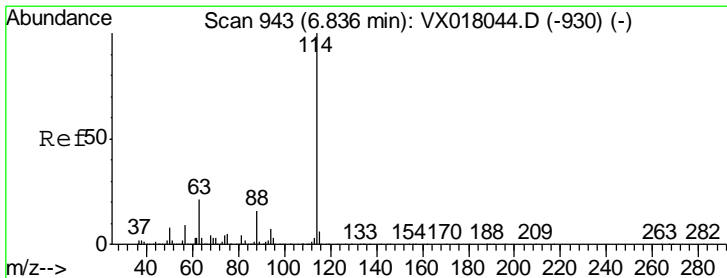
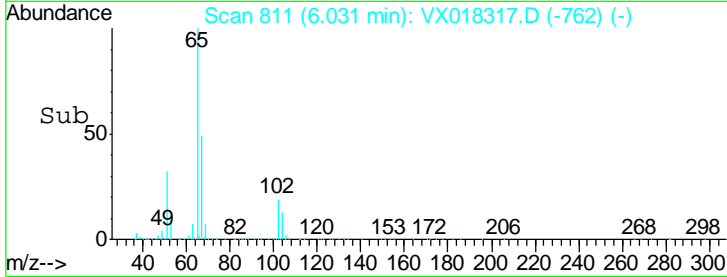
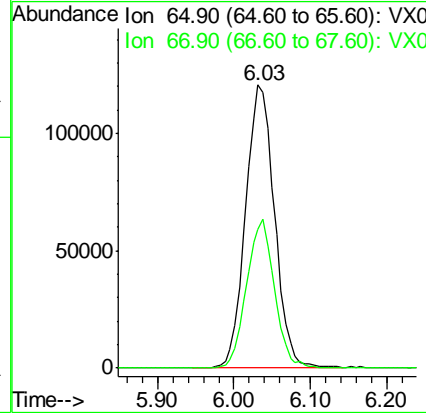
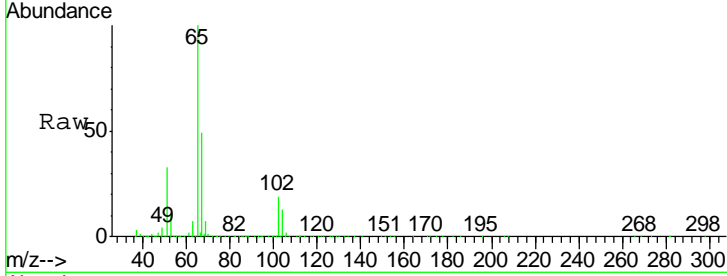




#33
 1,2-Dichloroethane-d4
 Concen: 52.555 ug/l
 RT: 6.03 min Scan# 811
 Delta R.T. -0.00 min
 Lab File: VX018317.D
 Acq: 09 Sep 2020 13:13

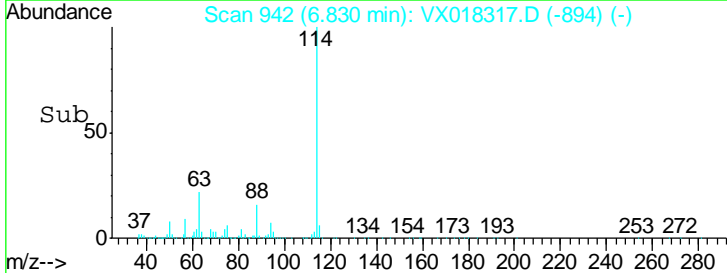
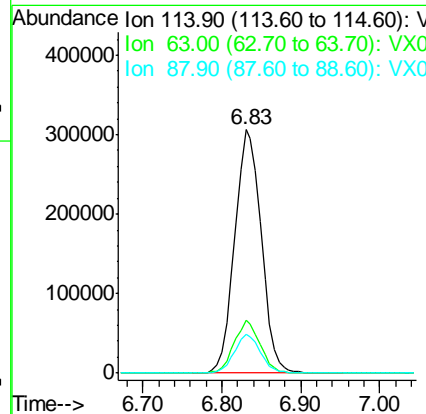
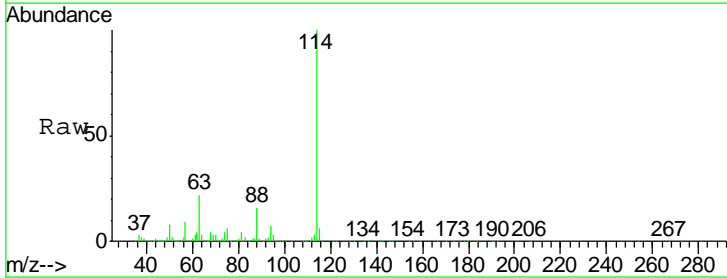
Instrument :
 MSVOA_X
 ClientSampled :
 TP-1DL

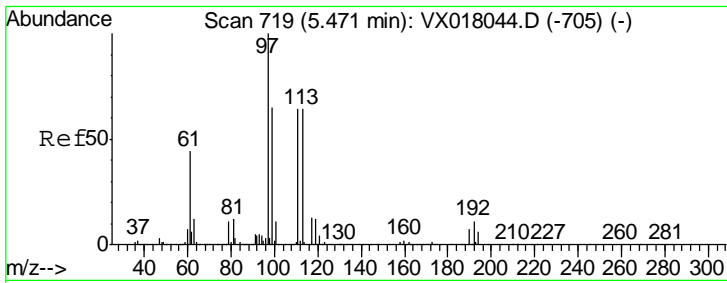
Tgt Ion: 65 Resp: 317469
 Ion Ratio Lower Upper
 65 100
 67 50.6 0.0 105.8



#34
 1,4-Difluorobenzene
 Concen: 50.000 ug/l
 RT: 6.83 min Scan# 942
 Delta R.T. -0.01 min
 Lab File: VX018317.D
 Acq: 09 Sep 2020 13:13

Tgt Ion: 114 Resp: 718663
 Ion Ratio Lower Upper
 114 100
 63 21.6 0.0 42.6
 88 16.0 0.0 31.8

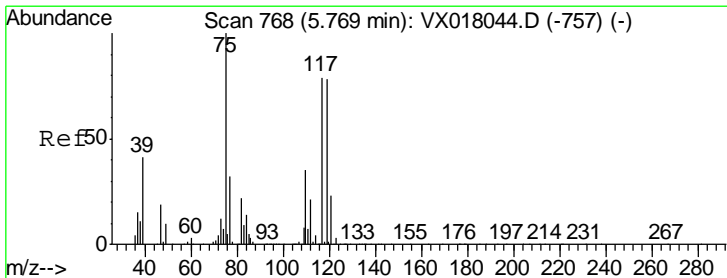
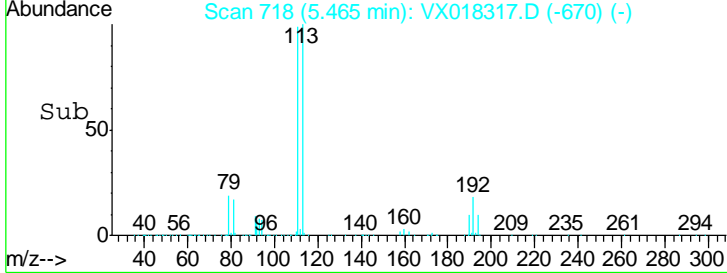
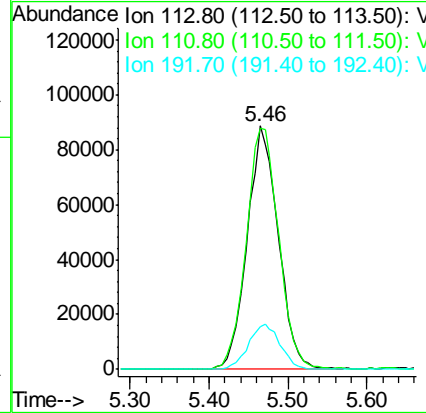
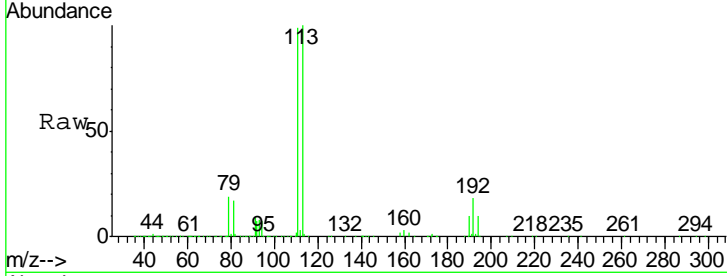




#35
 Dibromofluoromethane
 Concen: 49.621 ug/l
 RT: 5.46 min Scan# 718
 Delta R.T. -0.01 min
 Lab File: VX018317.D
 Acq: 09 Sep 2020 13:13

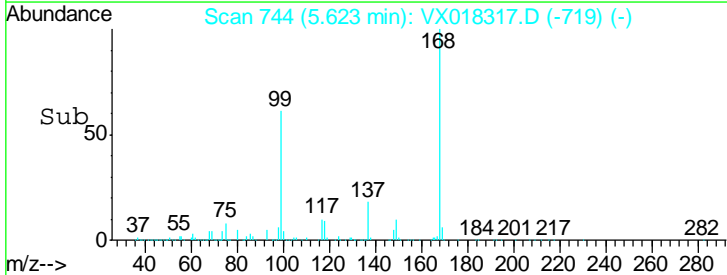
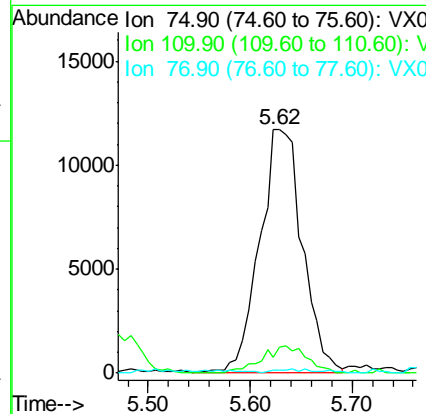
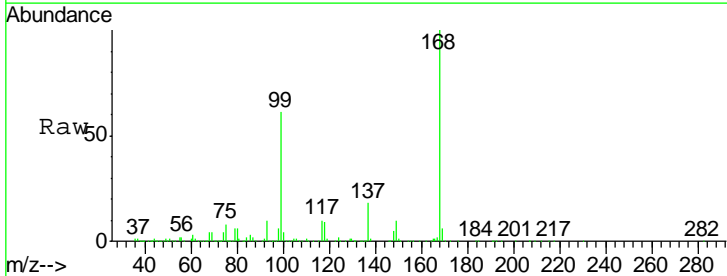
Instrument :
 MSVOA_X
 ClientSampled :
 TP-1DL

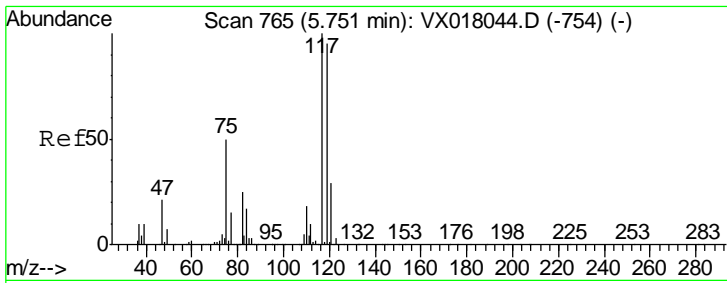
| Tgt Ion | Resp | Lower | Upper |
|---------|--------|-------|-------|
| 113 | 242869 | | |
| 111 | 103.5 | 81.6 | 122.4 |
| 192 | 19.2 | 15.8 | 23.8 |



#36
 1,1-Dichloropropene
 Concen: 5.126 ug/l
 RT: 5.62 min Scan# 744
 Delta R.T. -0.15 min
 Lab File: VX018317.D
 Acq: 09 Sep 2020 13:13

| Tgt Ion | Resp | Lower | Upper |
|---------|-------|-------|-------|
| 75 | 33978 | | |
| 110 | 11.8 | 18.0 | 54.0# |
| 77 | 1.2 | 24.4 | 36.6# |

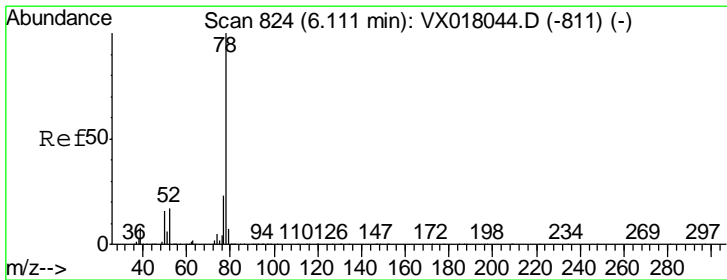
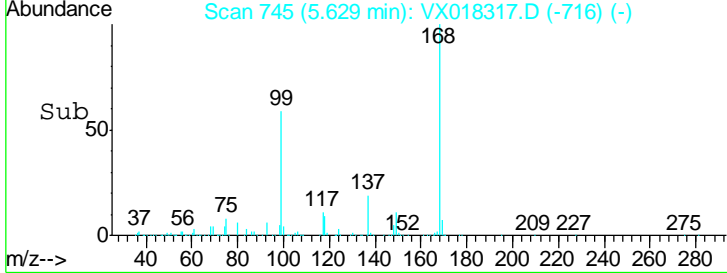
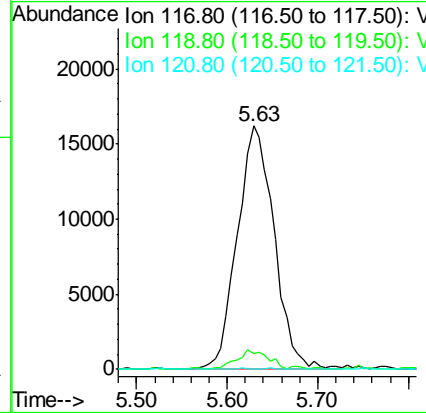
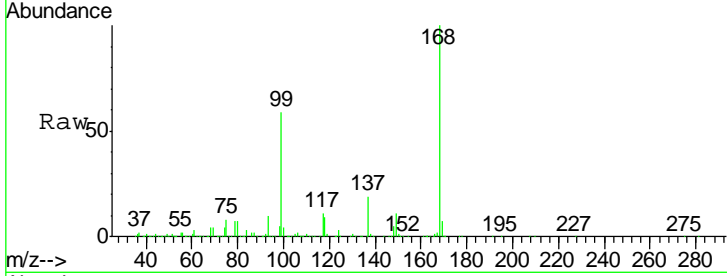




#38
 Carbon Tetrachloride
 Concen: 6.107 ug/l
 RT: 5.63 min Scan# 745
 Delta R.T. -0.12 min
 Lab File: VX018317.D
 Acq: 09 Sep 2020 13:13

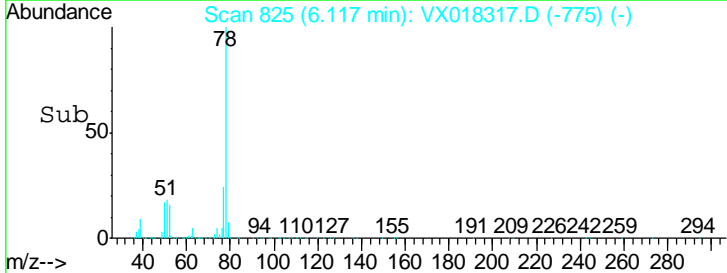
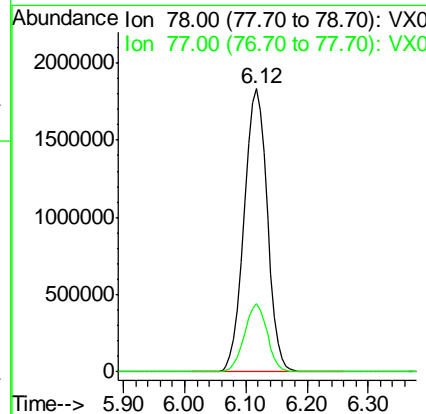
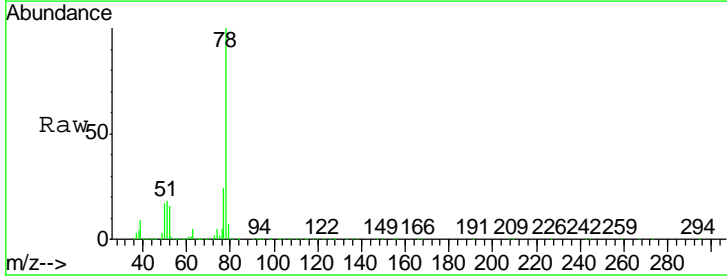
Instrument :
 MSVOA_X
Client Sampled :
 TP-1DL

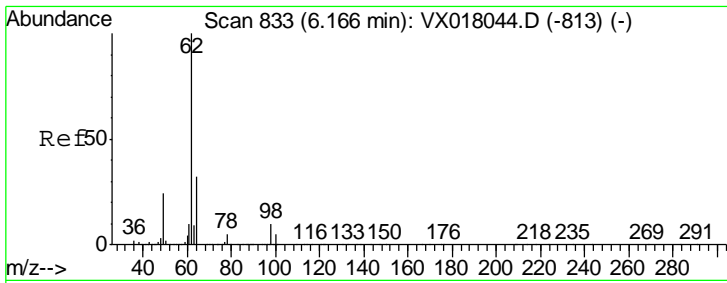
| Tgt Ion | Resp | Lower | Upper |
|---------|-------|-------|--------|
| 117 | 45617 | | |
| 119 | 6.6 | 75.8 | 113.6# |
| 121 | 0.0 | 23.4 | 35.0# |



#40
 Benzene
 Concen: 246.389 ug/l
 RT: 6.12 min Scan# 825
 Delta R.T. 0.01 min
 Lab File: VX018317.D
 Acq: 09 Sep 2020 13:13

| Tgt Ion | Resp | Lower | Upper |
|---------|---------|-------|-------|
| 78 | 4798986 | | |
| 77 | 24.0 | 18.2 | 27.2 |

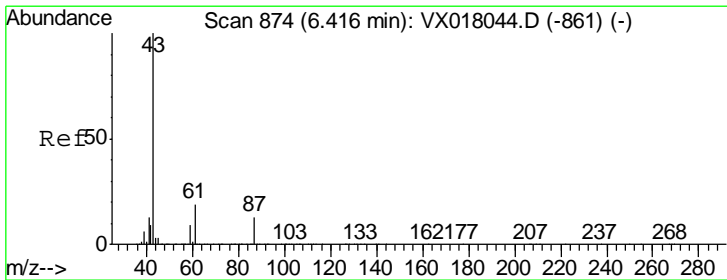
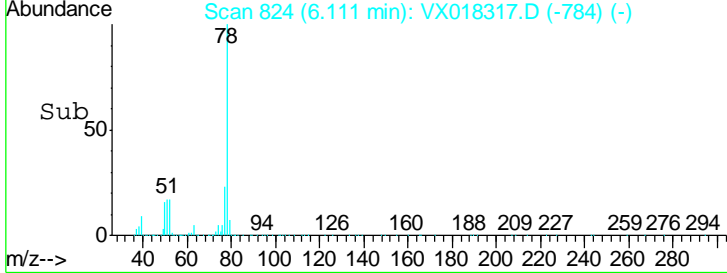
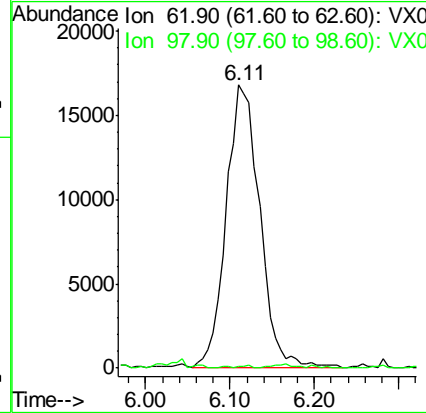
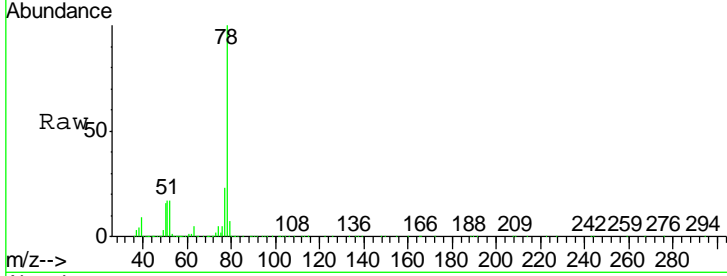




#42
 1,2-Dichloroethane
 Concen: 6.159 ug/l
 RT: 6.11 min Scan# 824
 Delta R.T. -0.05 min
 Lab File: VX018317.D
 Acq: 09 Sep 2020 13:13

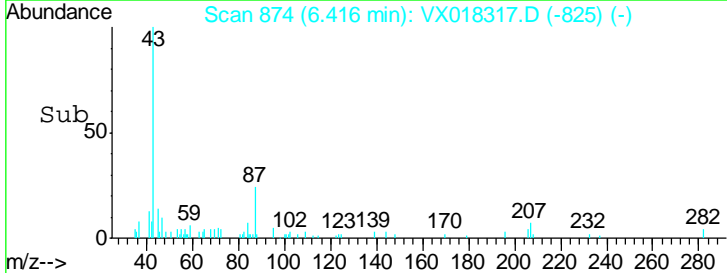
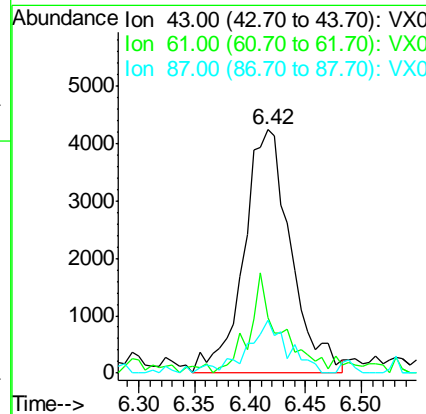
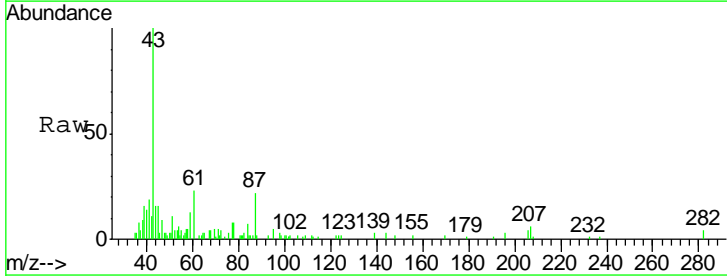
Instrument : MSVOA_X
 ClientSampled : TP-1DL

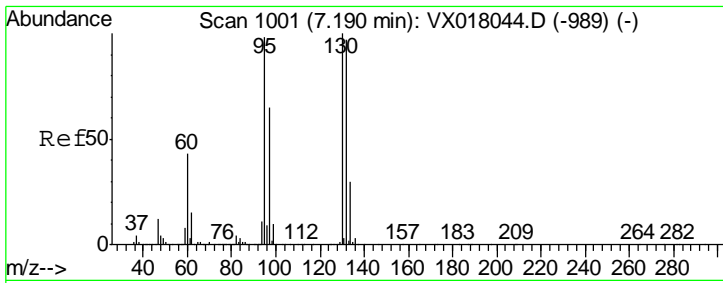
| Tgt Ion | Resp | Lower | Upper |
|---------|-------|-------|-------|
| 62 | 45962 | | |
| 62 | 100 | | |
| 98 | 0.3 | 0.0 | 18.2 |



#43
 Isopropyl Acetate
 Concen: 1.001 ug/l
 RT: 6.42 min Scan# 874
 Delta R.T. -0.00 min
 Lab File: VX018317.D
 Acq: 09 Sep 2020 13:13

| Tgt Ion | Resp | Lower | Upper |
|---------|-------|-------|-------|
| 43 | 12445 | | |
| 43 | 100 | | |
| 61 | 26.8 | 15.7 | 23.5# |
| 87 | 19.4 | 10.3 | 15.5# |

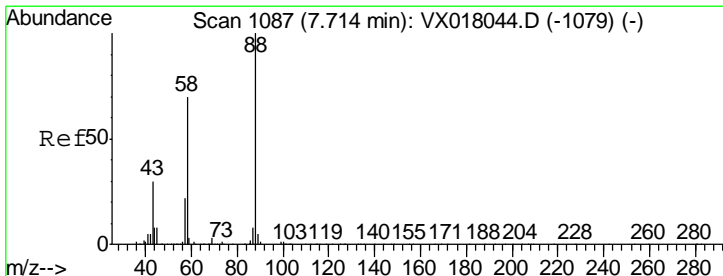
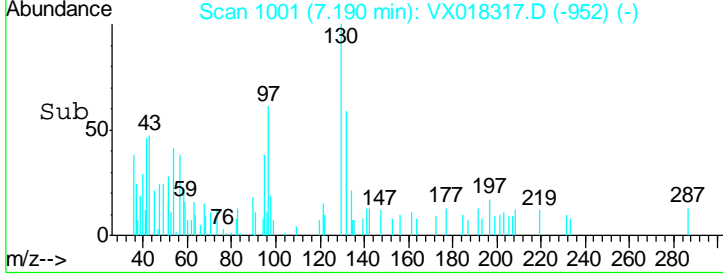
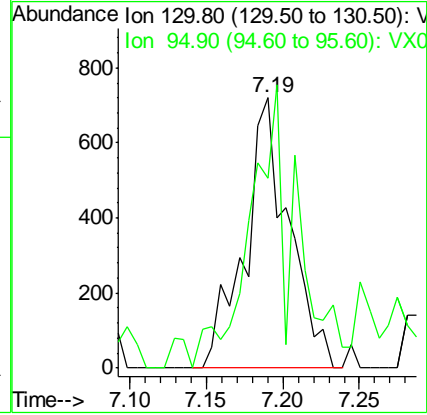
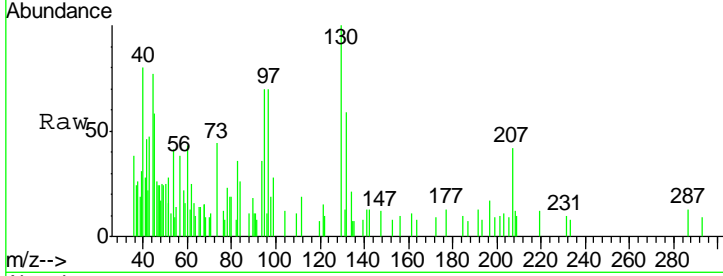




#44
 Trichloroethene
 Concen: 0.260 ug/l
 RT: 7.19 min Scan# 1001
 Delta R.T. -0.00 min
 Lab File: VX018317.D
 Acq: 09 Sep 2020 13:13

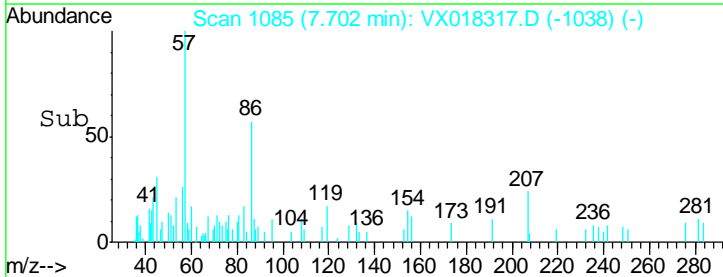
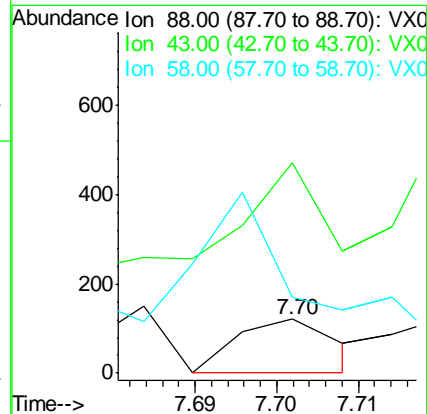
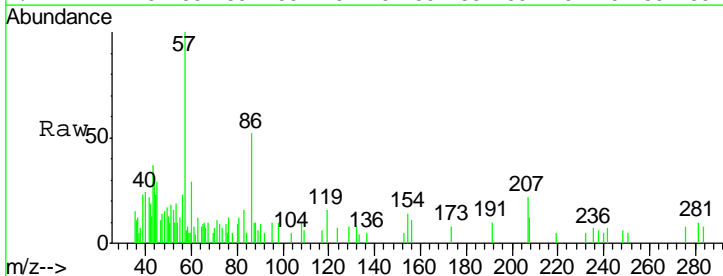
Instrument :
 MSVOA_X
 ClientSampled :
 TP-1DL

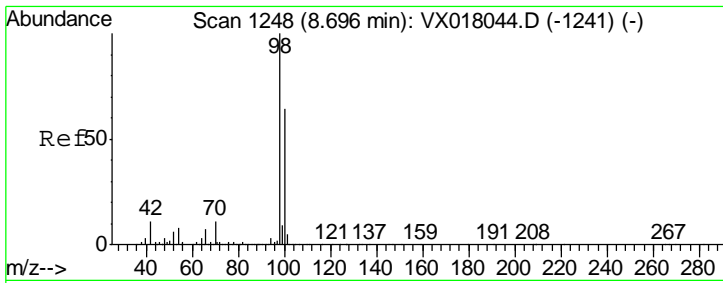
Tgt Ion: 130 Resp: 1433
 Ion Ratio Lower Upper
 130 100
 95 70.1 0.0 196.4



#49
 1,4-Dioxane
 Concen: 0.919 ug/l
 RT: 7.70 min Scan# 1085
 Delta R.T. -0.01 min
 Lab File: VX018317.D
 Acq: 09 Sep 2020 13:13

Tgt Ion: 88 Resp: 103
 Ion Ratio Lower Upper
 88 100
 43 0.0 27.4 41.0#
 58 398.1 56.4 84.6#

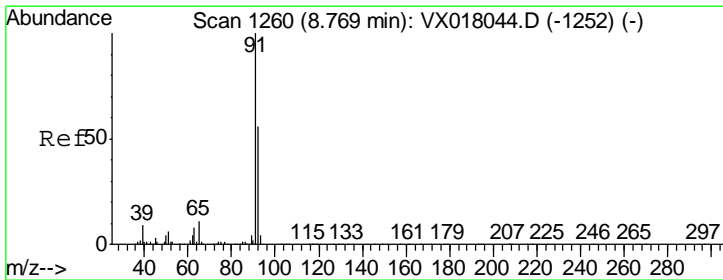
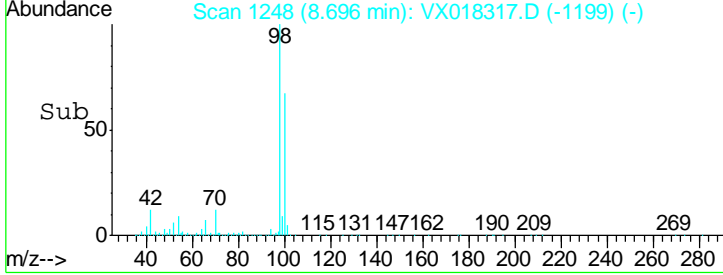
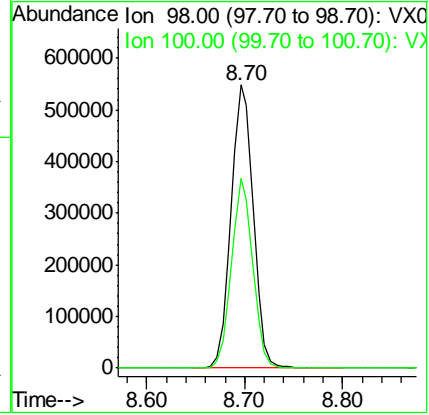
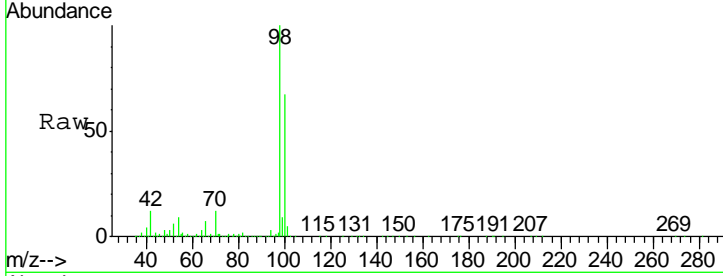




#50
 Toluene-d8
 Concen: 47.305 ug/l
 RT: 8.70 min Scan# 1248
 Delta R.T. -0.00 min
 Lab File: VX018317.D
 Acq: 09 Sep 2020 13:13

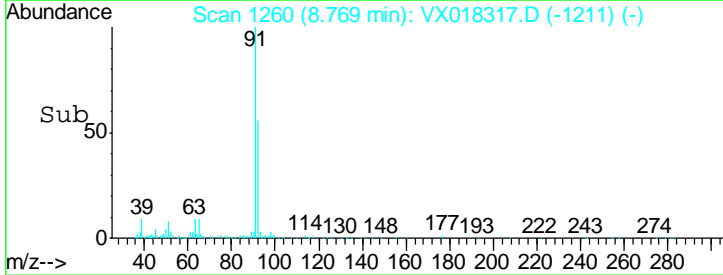
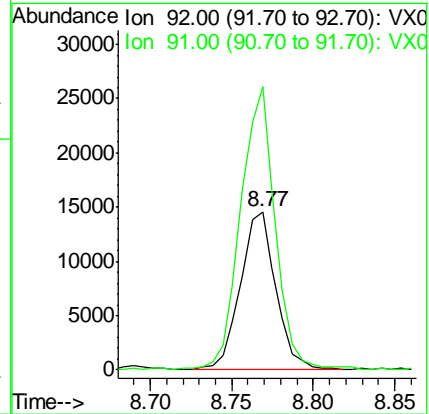
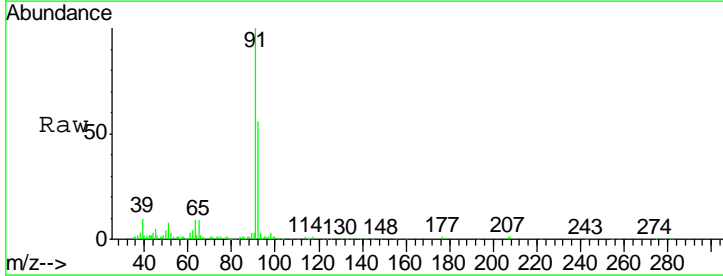
Instrument :
 MSVOA_X
 ClientSampled :
 TP-1DL

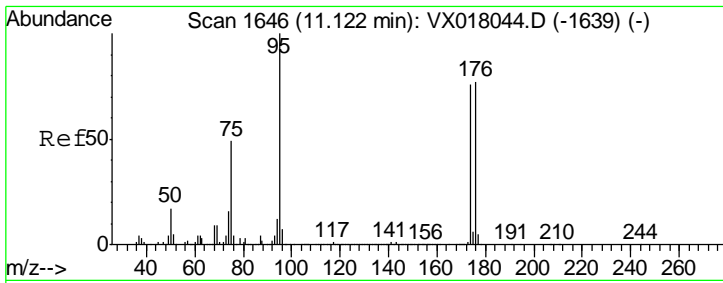
Tgt Ion: 98 Resp: 862349
 Ion Ratio Lower Upper
 98 100
 100 64.4 52.2 78.4



#52
 Toluene
 Concen: 1.798 ug/l
 RT: 8.77 min Scan# 1260
 Delta R.T. -0.00 min
 Lab File: VX018317.D
 Acq: 09 Sep 2020 13:13

Tgt Ion: 92 Resp: 22211
 Ion Ratio Lower Upper
 92 100
 91 173.1 140.3 210.5

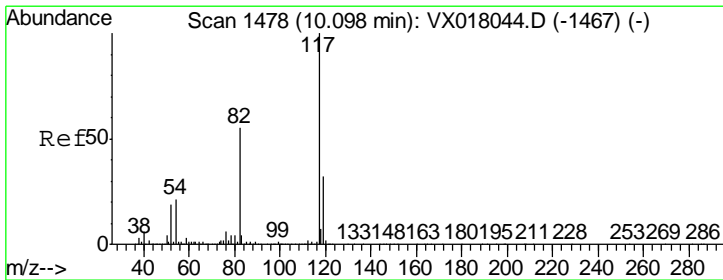
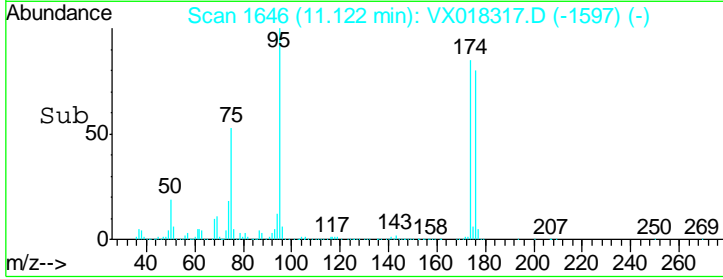
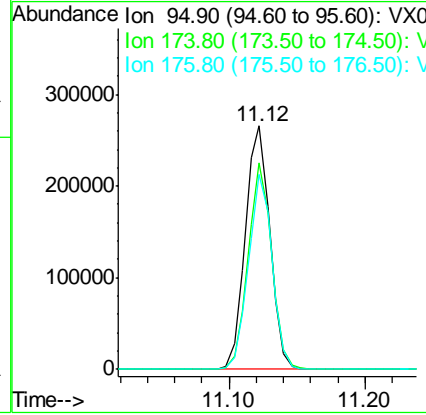
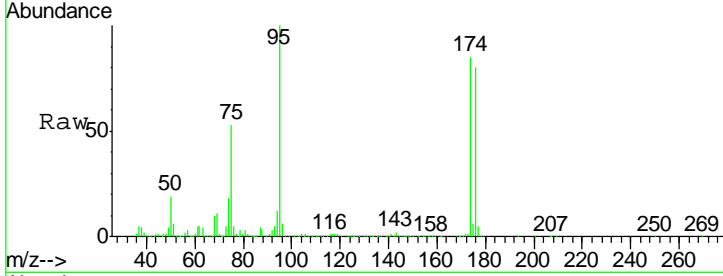




#62
 4-Bromofluorobenzene
 Concen: 46.619 ug/l
 RT: 11.12 min Scan# 1646
 Delta R.T. -0.00 min
 Lab File: VX018317.D
 Acq: 09 Sep 2020 13:13

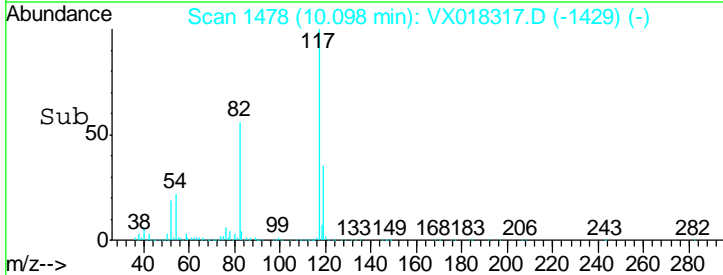
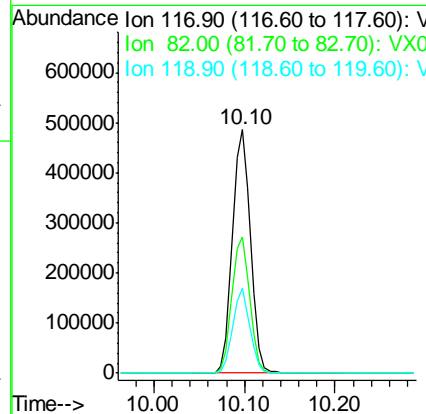
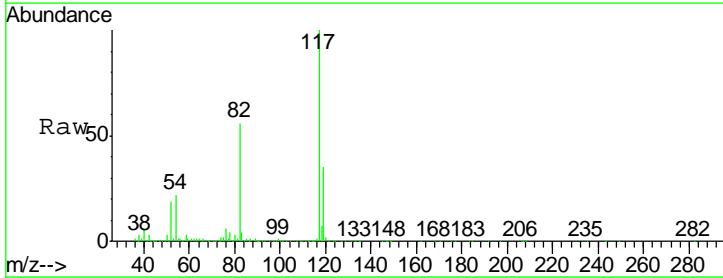
Instrument :
 MSVOA_X
 ClientSampled :
 TP-1DL

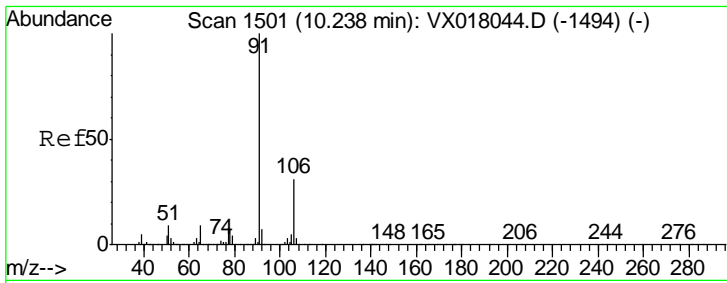
| Tgt Ion | Resp | Lower | Upper |
|---------|--------|-------|-------|
| 95 | 334367 | | |
| 174 | 80.9 | 0.0 | 160.2 |
| 176 | 77.4 | 0.0 | 155.8 |



#63
 Chlorobenzene-d5
 Concen: 50.000 ug/l
 RT: 10.10 min Scan# 1478
 Delta R.T. -0.00 min
 Lab File: VX018317.D
 Acq: 09 Sep 2020 13:13

| Tgt Ion | Resp | Lower | Upper |
|---------|--------|-------|-------|
| 117 | 669325 | | |
| 82 | 56.1 | 44.2 | 66.2 |
| 119 | 34.9 | 25.7 | 38.5 |

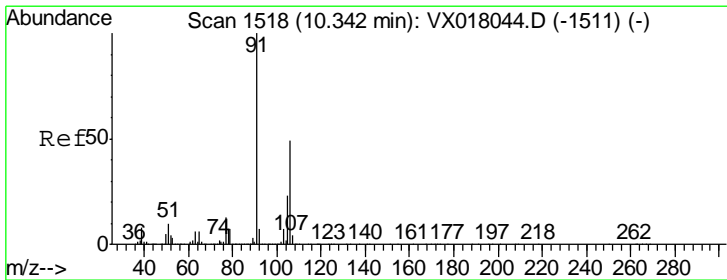
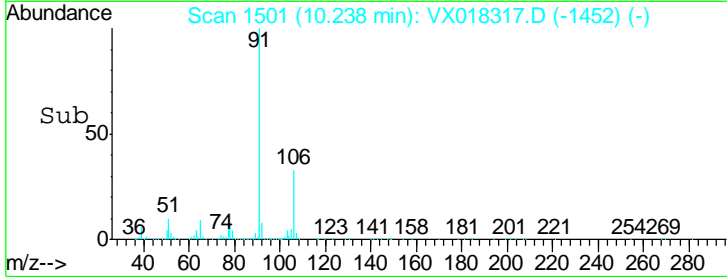
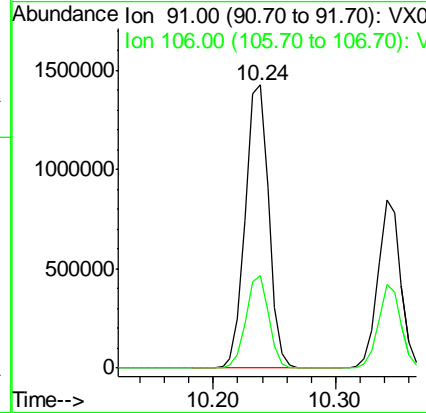
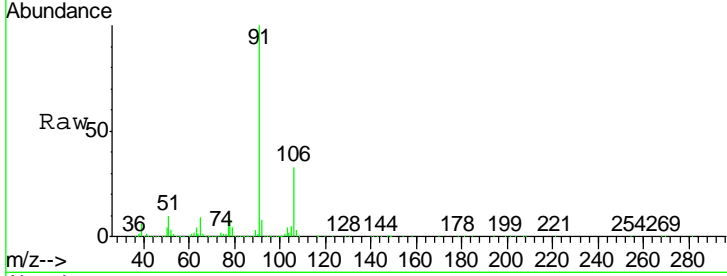




#67
 Ethyl Benzene
 Concen: 83.308 ug/l
 RT: 10.24 min Scan# 1501
 Delta R.T. -0.00 min
 Lab File: VX018317.D
 Acq: 09 Sep 2020 13:13

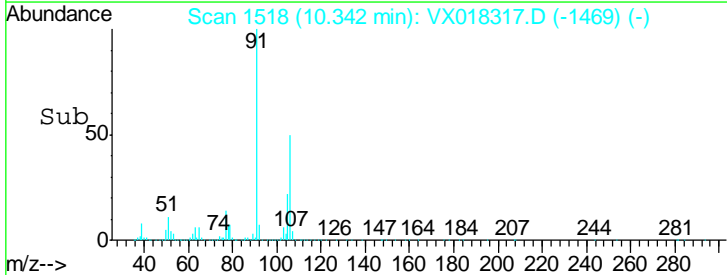
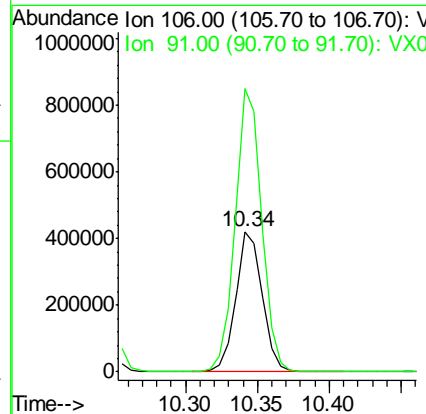
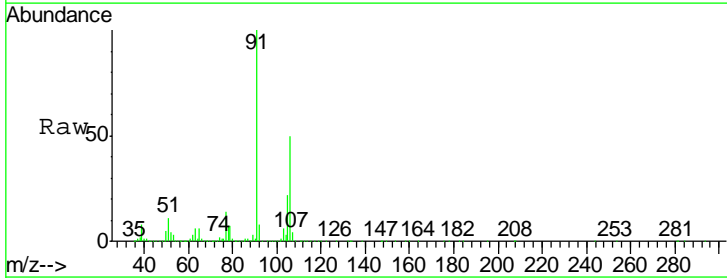
Instrument : MSVOA_X
 ClientSampled : TP-1DL

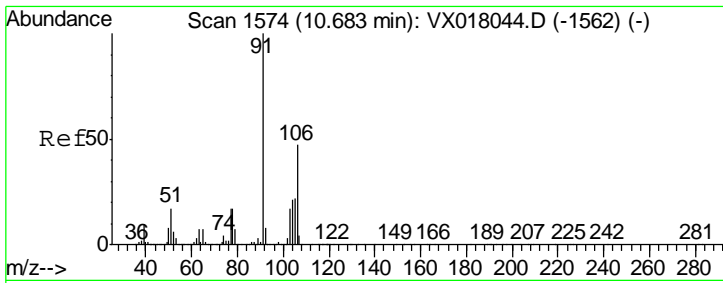
Tgt Ion: 91 Resp: 1893874
 Ion Ratio Lower Upper
 91 100
 106 32.9 24.9 37.3



#68
 m/p-Xylenes
 Concen: 63.669 ug/l
 RT: 10.34 min Scan# 1518
 Delta R.T. -0.00 min
 Lab File: VX018317.D
 Acq: 09 Sep 2020 13:13

Tgt Ion: 106 Resp: 540243
 Ion Ratio Lower Upper
 106 100
 91 203.1 162.2 243.2

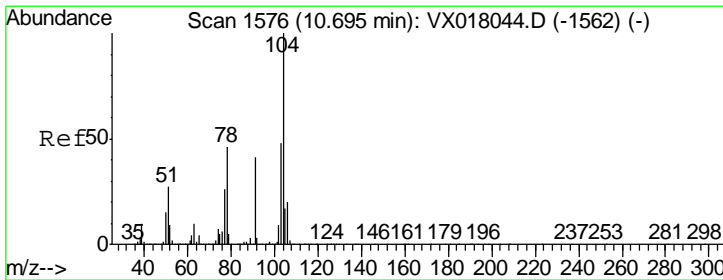
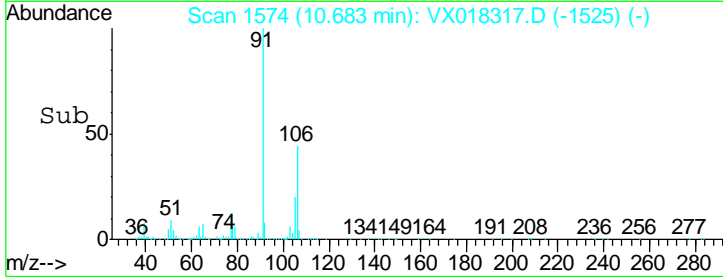
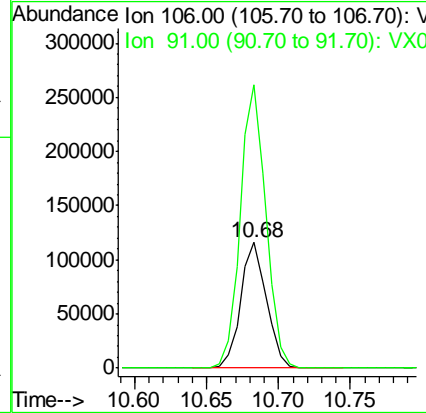
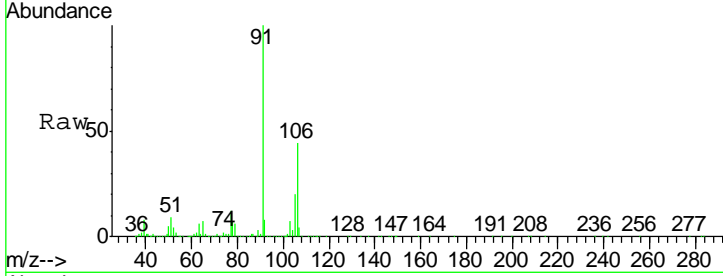




#69
 o-Xylene
 Concen: 17.582 ug/l
 RT: 10.68 min Scan# 1574
 Delta R.T. -0.00 min
 Lab File: VX018317.D
 Acq: 09 Sep 2020 13:13

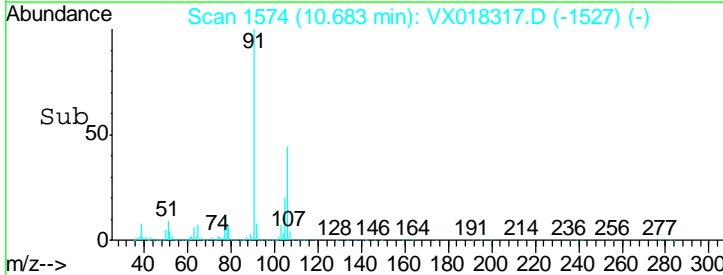
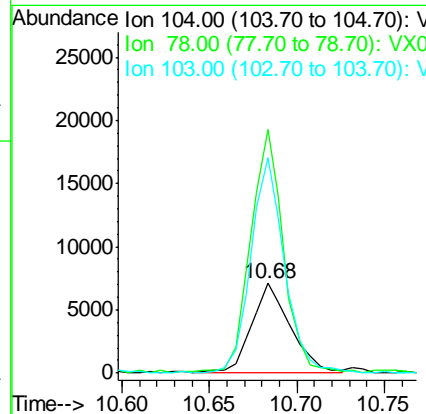
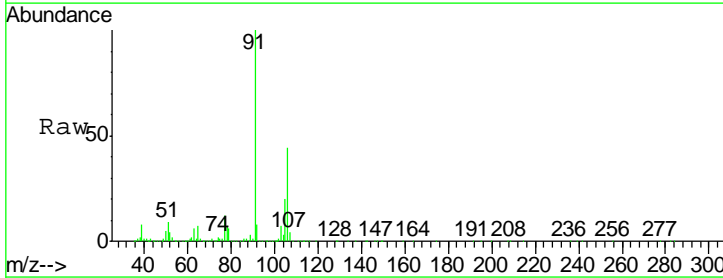
Instrument :
 MSVOA_X
 ClientSampled :
 TP-1DL

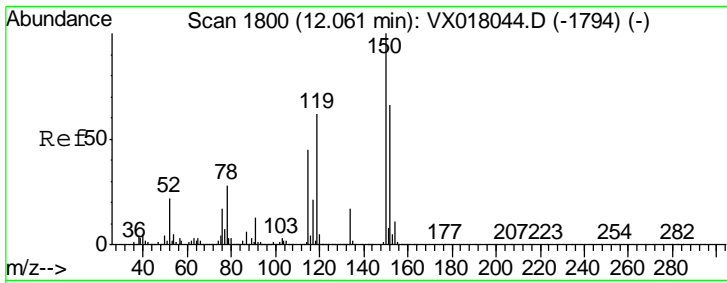
Tgt Ion:106 Resp: 144621
 Ion Ratio Lower Upper
 106 100
 91 223.5 107.1 321.3



#70
 Styrene
 Concen: 0.788 ug/l
 RT: 10.68 min Scan# 1574
 Delta R.T. -0.01 min
 Lab File: VX018317.D
 Acq: 09 Sep 2020 13:13

Tgt Ion:104 Resp: 11032
 Ion Ratio Lower Upper
 104 100
 78 226.1 40.9 61.3#
 103 207.2 43.6 65.4#

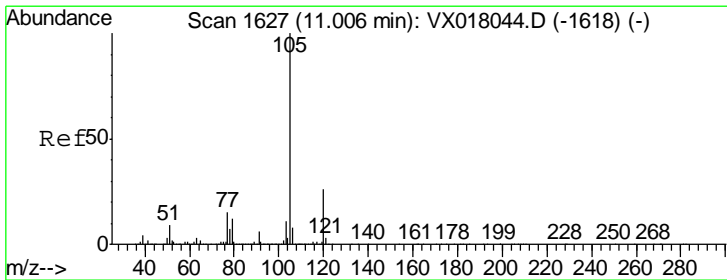
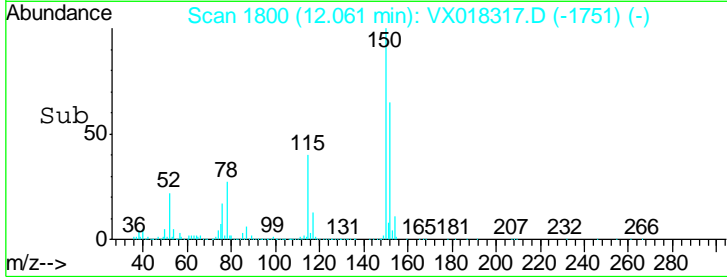
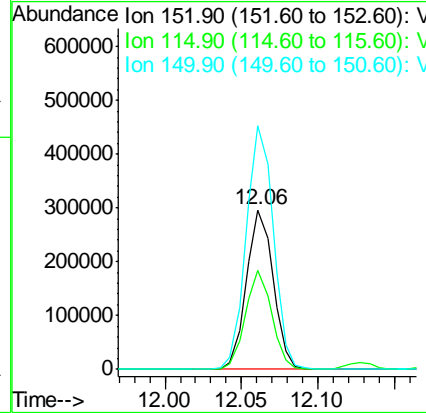
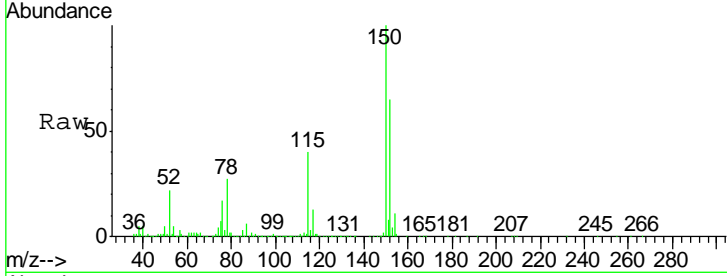




#72
 1,4-Dichlorobenzene-d4
 Concen: 50.000 ug/l
 RT: 12.06 min Scan# 1800
 Delta R.T. -0.00 min
 Lab File: VX018317.D
 Acq: 09 Sep 2020 13:13

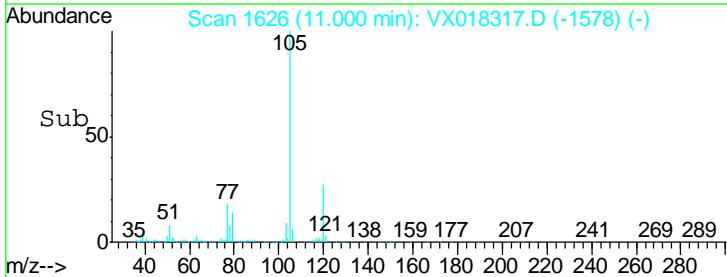
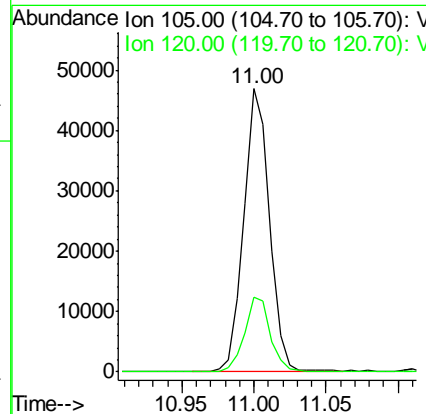
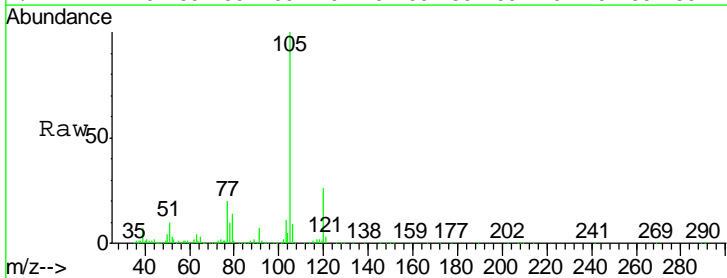
Instrument :
 MSVOA_X
 ClientSampled :
 TP-1DL

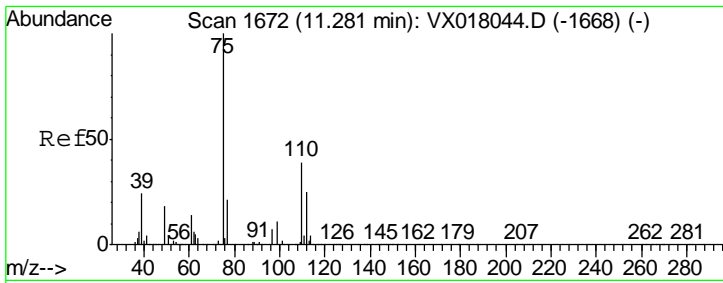
| Tgt Ion | Resp | Lower | Upper |
|---------|-------|-------|-------|
| 152 | 100 | | |
| 115 | 60.6 | 41.5 | 124.5 |
| 150 | 155.0 | 0.0 | 343.8 |



#73
 Isopropylbenzene
 Concen: 2.452 ug/l
 RT: 11.00 min Scan# 1626
 Delta R.T. -0.01 min
 Lab File: VX018317.D
 Acq: 09 Sep 2020 13:13

| Tgt Ion | Resp | Lower | Upper |
|---------|------|-------|-------|
| 105 | 100 | | |
| 120 | 26.5 | 13.2 | 39.5 |

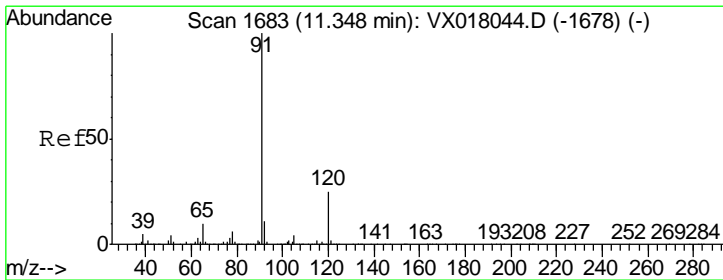
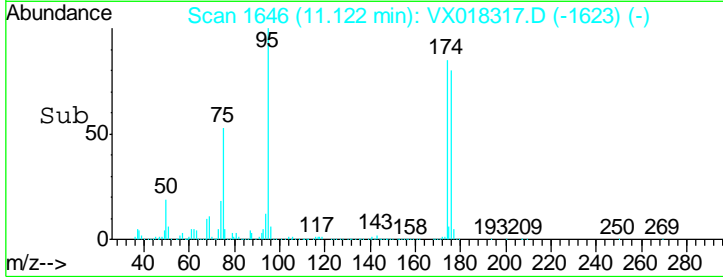
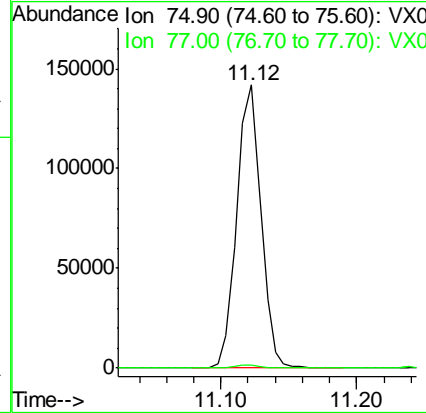
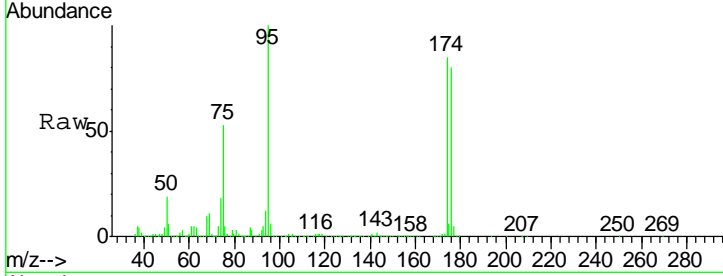




#76
 1,2,3-Trichloropropane
 Concen: 22.010 ug/l
 RT: 11.12 min Scan# 1646
 Delta R.T. -0.16 min
 Lab File: VX018317.D
 Acq: 09 Sep 2020 13:13

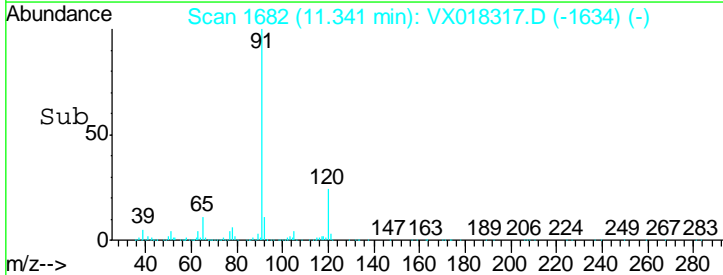
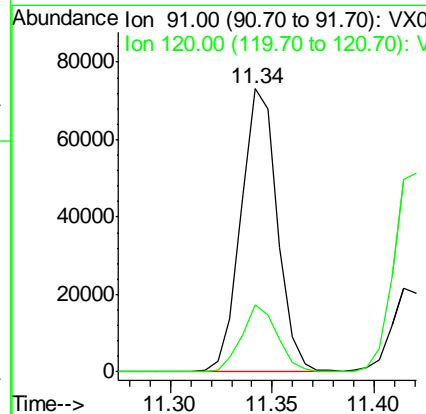
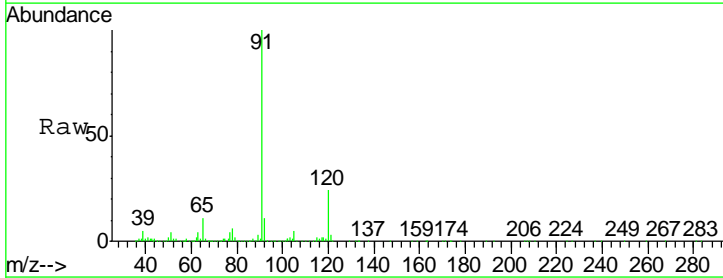
Instrument :
 MSVOA_X
 ClientSampled :
 TP-1DL

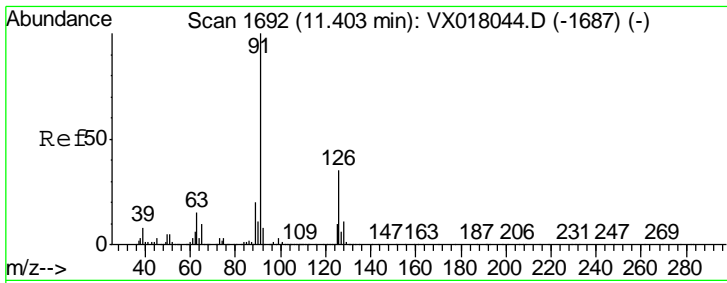
Tgt Ion: 75 Resp: 176163
 Ion Ratio Lower Upper
 75 100
 77 1.2 20.8 62.2#



#78
 n-propylbenzene
 Concen: 3.349 ug/l
 RT: 11.34 min Scan# 1682
 Delta R.T. -0.01 min
 Lab File: VX018317.D
 Acq: 09 Sep 2020 13:13

Tgt Ion: 91 Resp: 90259
 Ion Ratio Lower Upper
 91 100
 120 23.2 11.9 35.9

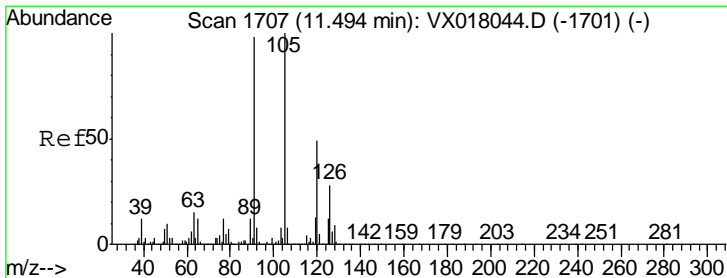
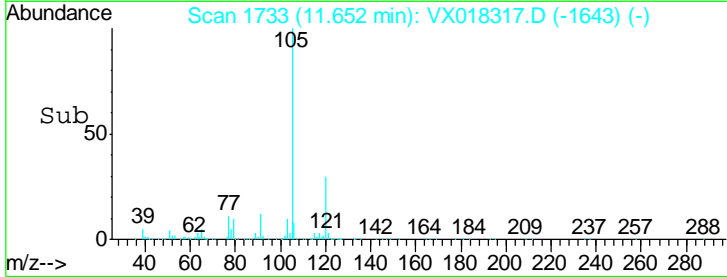
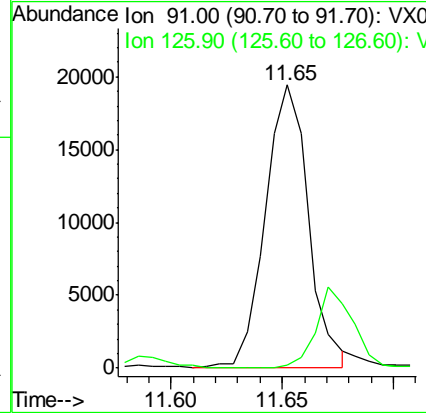
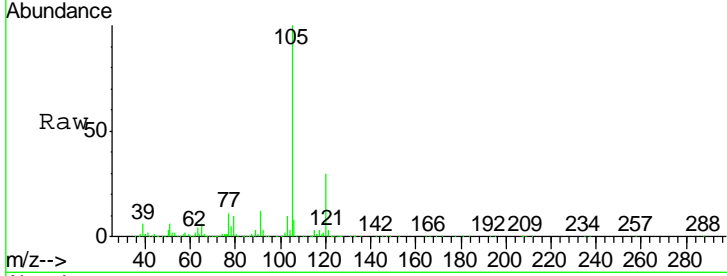




#79
 2-Chlorotoluene
 Concen: 1.571 ug/l
 RT: 11.65 min Scan# 1733
 Delta R.T. 0.25 min
 Lab File: VX018317.D
 Acq: 09 Sep 2020 13:13

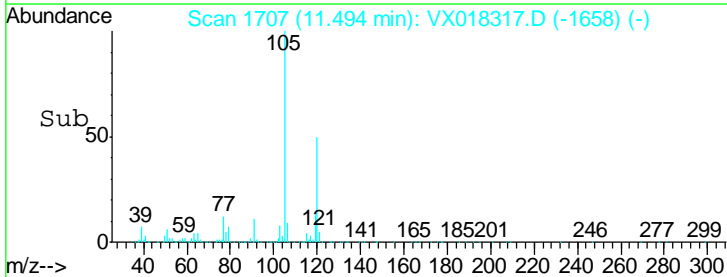
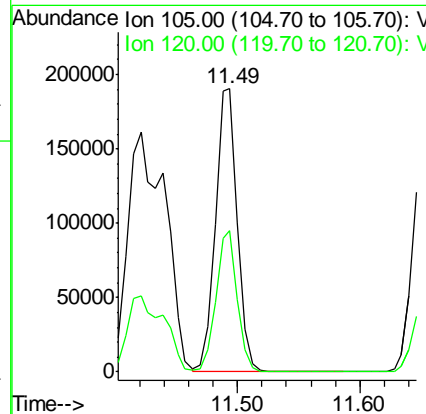
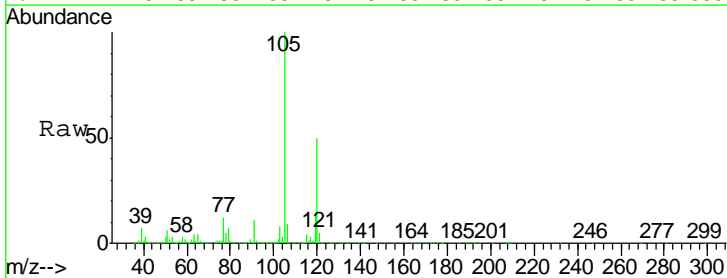
Instrument :
 MSVOA_X
 ClientSampled :
 TP-1DL

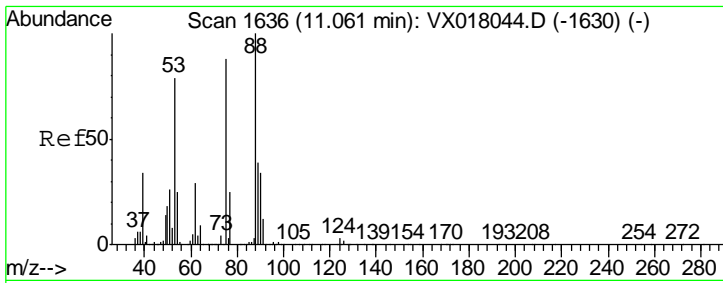
Tgt Ion: 91 Resp: 26147
 Ion Ratio Lower Upper
 91 100
 126 18.7 17.4 52.2



#80
 1,3,5-Trimethylbenzene
 Concen: 12.237 ug/l
 RT: 11.49 min Scan# 1707
 Delta R.T. -0.00 min
 Lab File: VX018317.D
 Acq: 09 Sep 2020 13:13

Tgt Ion: 105 Resp: 238649
 Ion Ratio Lower Upper
 105 100
 120 48.4 24.1 72.2

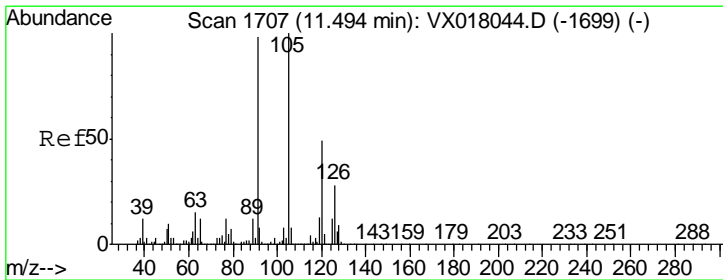
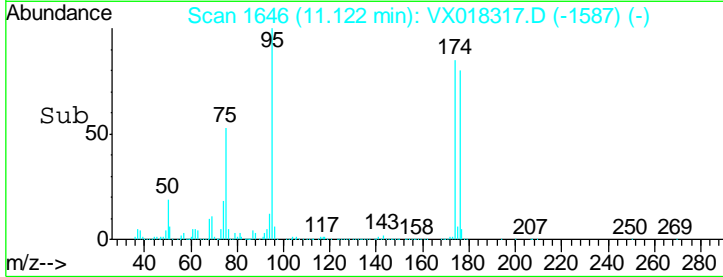
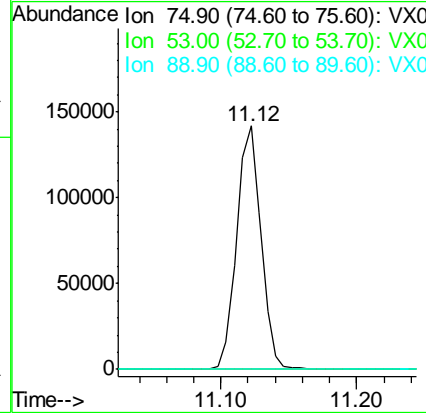
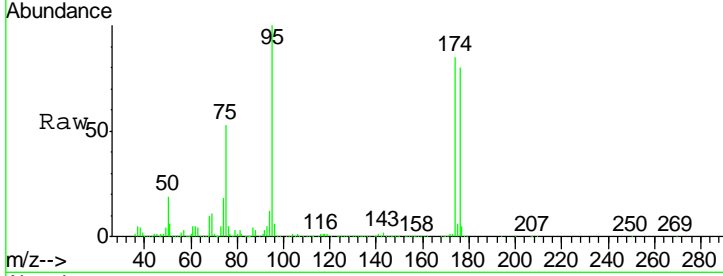




#81
 trans-1,4-Dichloro-2-butene
 Concen: 59.445 ug/l
 RT: 11.12 min Scan# 1646
 Delta R.T. 0.06 min
 Lab File: VX018317.D
 Acq: 09 Sep 2020 13:13

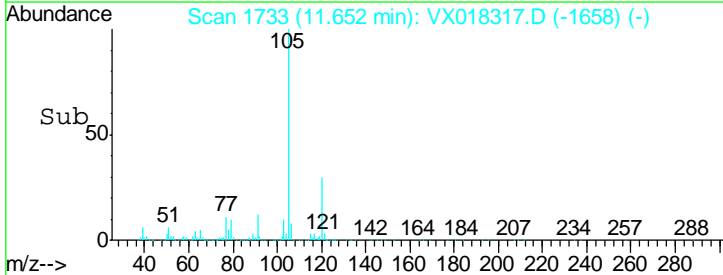
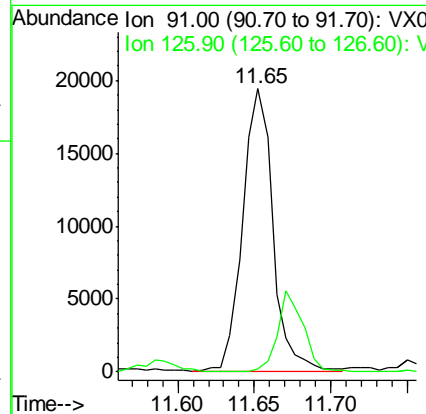
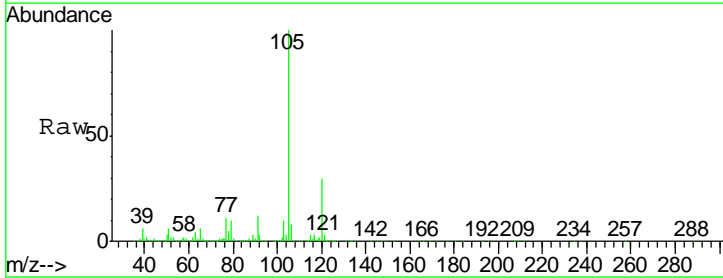
Instrument :
 MSVOA_X
 ClientSampled :
 TP-1DL

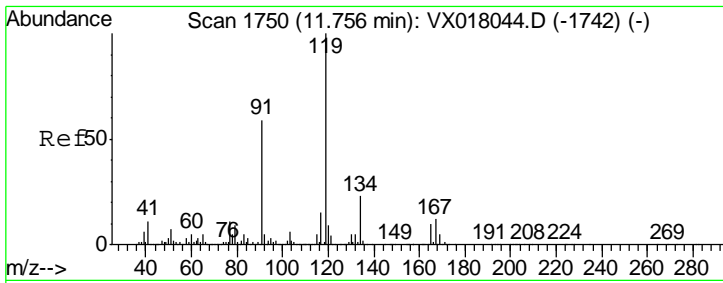
| Tgt Ion | Resp | Lower | Upper |
|---------|--------|-------|--------|
| 75 | 176163 | | |
| 53 | 0.1 | 74.7 | 112.1# |
| 89 | 0.0 | 36.6 | 54.8# |



#82
 4-Chlorotoluene
 Concen: 1.356 ug/l
 RT: 11.65 min Scan# 1733
 Delta R.T. 0.16 min
 Lab File: VX018317.D
 Acq: 09 Sep 2020 13:13

| Tgt Ion | Resp | Lower | Upper |
|---------------------------------------|-------|-------|-------|
| 91 <td>26847</td> <td></td> <td></td> | 26847 | | |
| 126 | 24.2 | 15.1 | 45.3 |

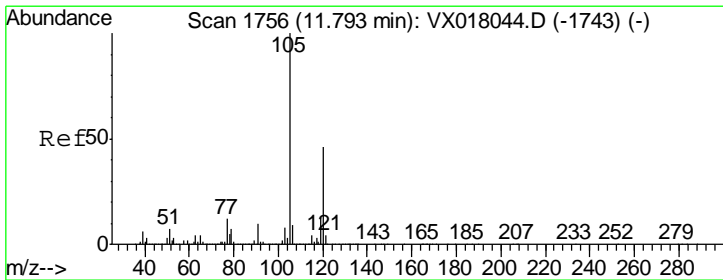
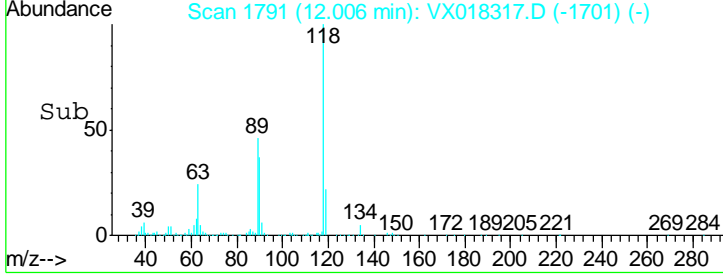
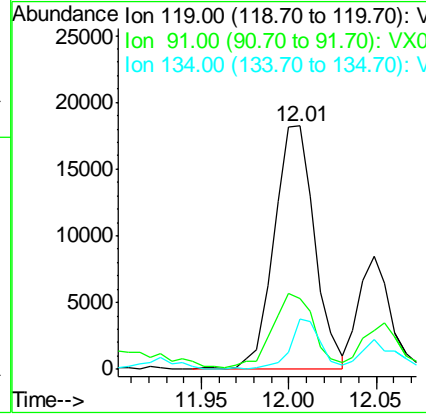
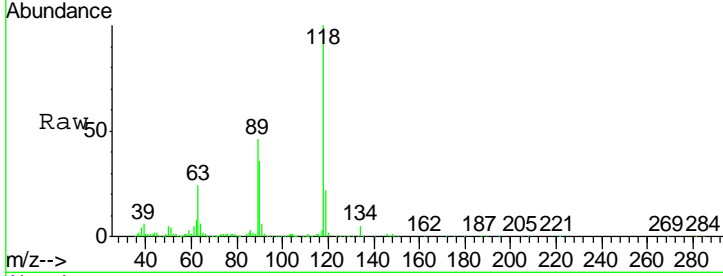




#83
 tert-Butylbenzene
 Concen: 1.531 ug/l
 RT: 12.01 min Scan# 1791
 Delta R.T. 0.25 min
 Lab File: VX018317.D
 Acq: 09 Sep 2020 13:13

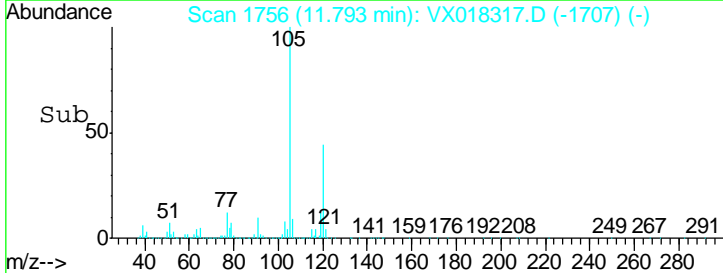
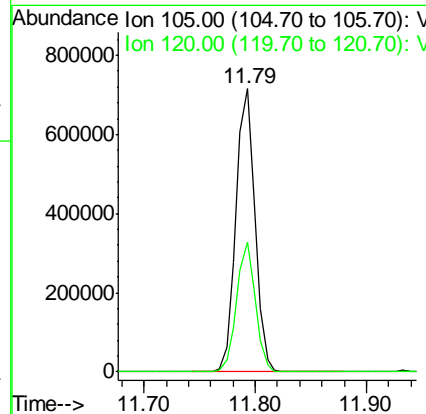
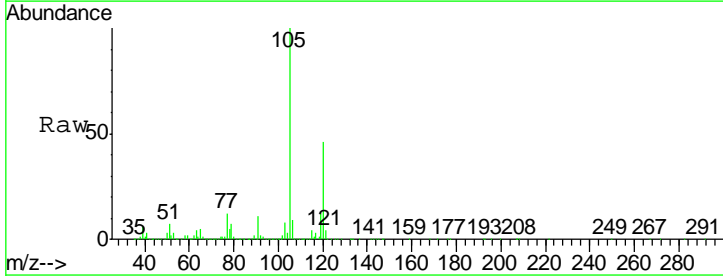
Instrument :
 MSVOA_X
 ClientSampled :
 TP-1DL

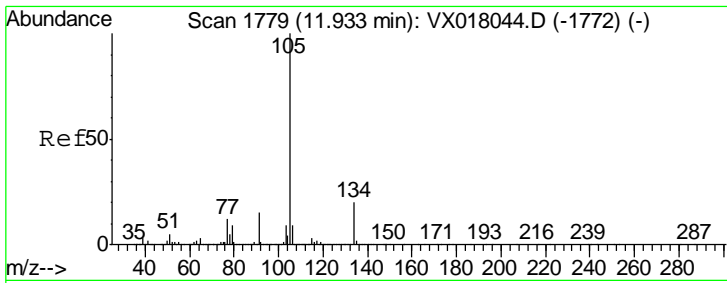
| Tgt Ion | Resp | Lower | Upper |
|---------|-------|-------|-------|
| 119 | 29457 | | |
| 91 | 30.4 | 28.2 | 84.7 |
| 134 | 15.8 | 11.3 | 33.8 |



#84
 1,2,4-Trimethylbenzene
 Concen: 42.475 ug/l
 RT: 11.79 min Scan# 1756
 Delta R.T. -0.00 min
 Lab File: VX018317.D
 Acq: 09 Sep 2020 13:13

| Tgt Ion | Resp | Lower | Upper |
|---------|--------|-------|-------|
| 105 | 846910 | | |
| 120 | 44.8 | 22.3 | 66.9 |

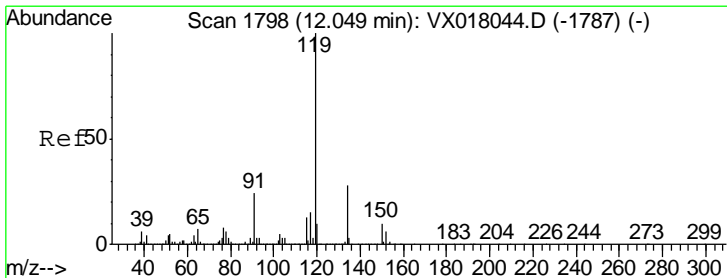
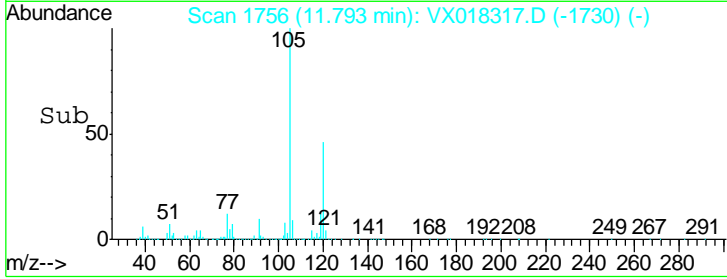
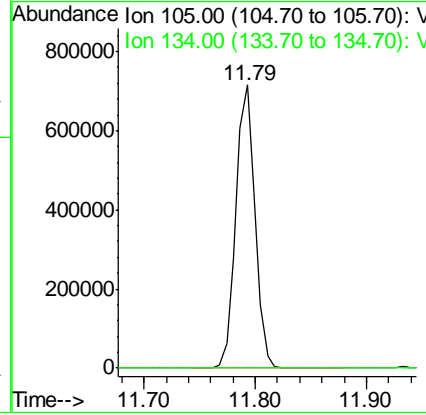
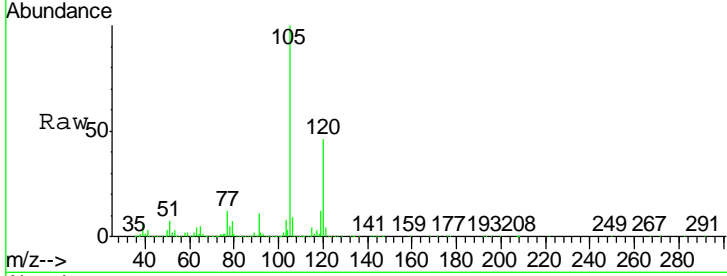




#85
 sec-Butylbenzene
 Concen: 38.695 ug/l
 RT: 11.79 min Scan# 1756
 Delta R.T. -0.14 min
 Lab File: VX018317.D
 Acq: 09 Sep 2020 13:13

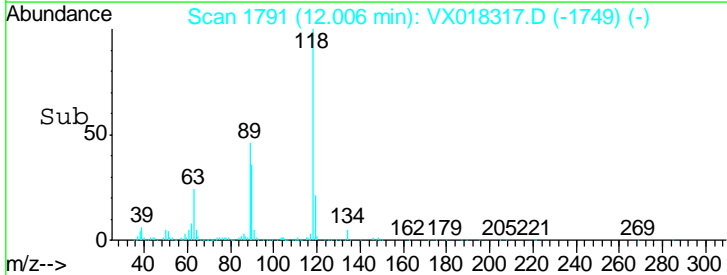
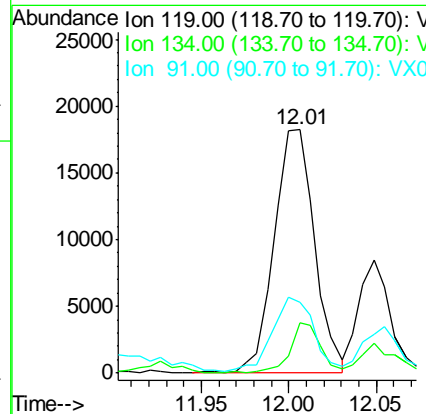
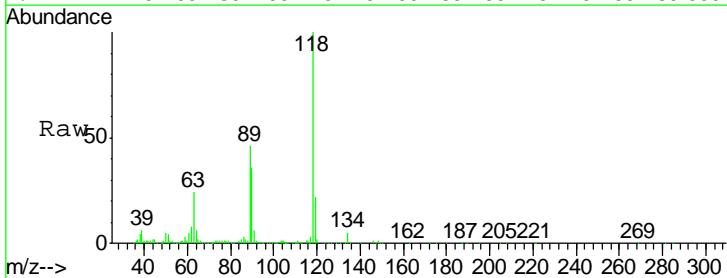
Instrument :
 MSVOA_X
 ClientSampled :
 TP-1DL

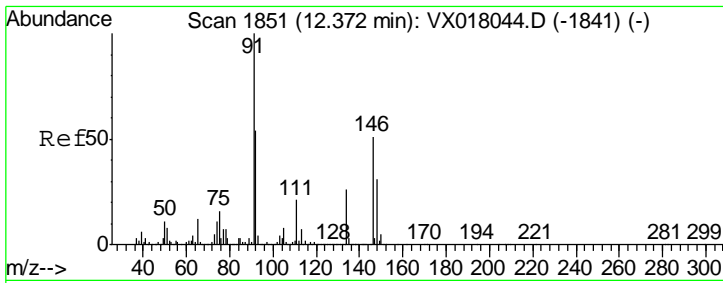
Tgt Ion:105 Resp: 846910
 Ion Ratio Lower Upper
 105 100
 134 0.0 10.1 30.3#



#86
 p-Isopropyltoluene
 Concen: 1.465 ug/l
 RT: 12.01 min Scan# 1791
 Delta R.T. -0.04 min
 Lab File: VX018317.D
 Acq: 09 Sep 2020 13:13

Tgt Ion:119 Resp: 29457
 Ion Ratio Lower Upper
 119 100
 134 15.8 13.2 39.5
 91 30.4 11.8 35.4

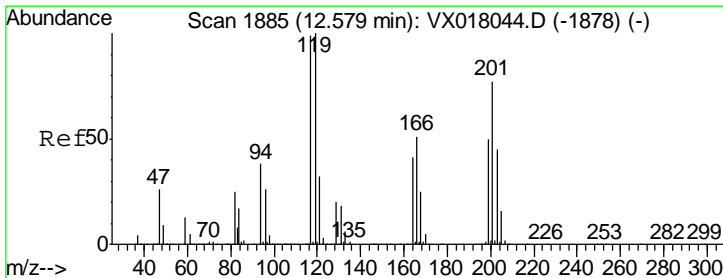
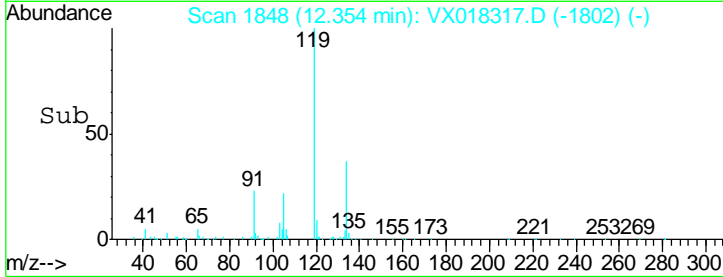
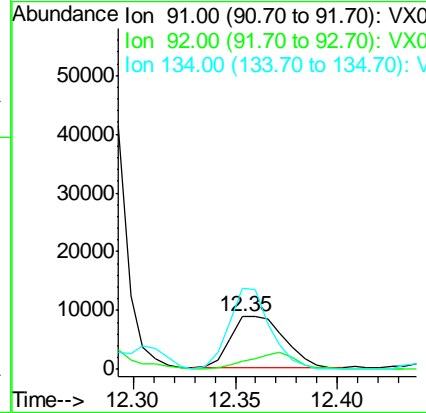
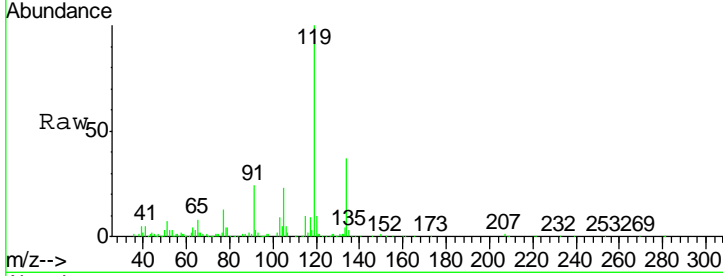




#89
 n-Butylbenzene
 Concen: 0.880 ug/l
 RT: 12.35 min Scan# 1848
 Delta R.T. -0.02 min
 Lab File: VX018317.D
 Acq: 09 Sep 2020 13:13

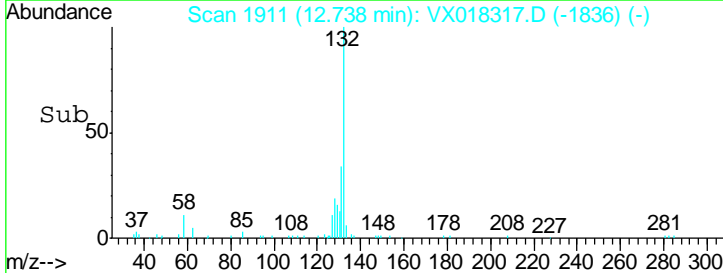
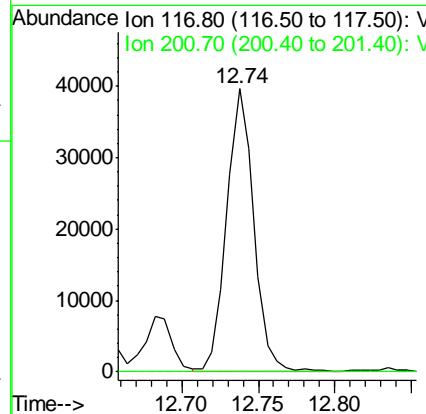
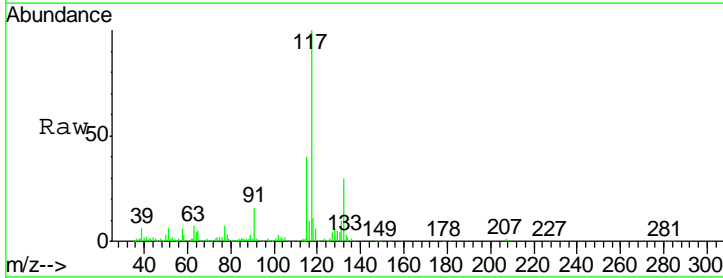
Instrument :
 MSVOA_X
 ClientSampled :
 TP-1DL

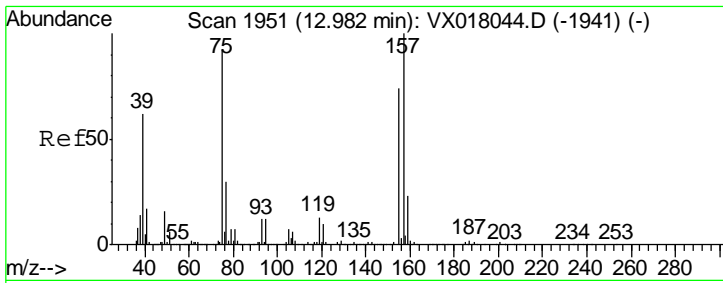
| Tgt Ion | Resp | Lower | Upper |
|---------|-------|-------|-------|
| 91 | 16152 | | |
| 92 | 29.0 | 26.4 | 79.2 |
| 134 | 120.8 | 12.9 | 38.7# |



#90
 Hexachloroethane
 Concen: 12.219 ug/l
 RT: 12.74 min Scan# 1911
 Delta R.T. 0.16 min
 Lab File: VX018317.D
 Acq: 09 Sep 2020 13:13

| Tgt Ion | Resp | Lower | Upper |
|---------|-------|-------|--------|
| 117 | 48332 | | |
| 117 | 100 | | |
| 201 | 0.0 | 38.5 | 115.3# |

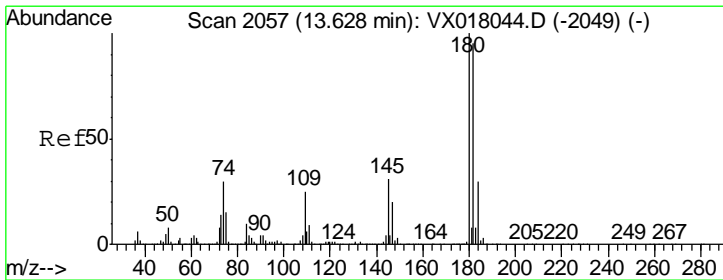
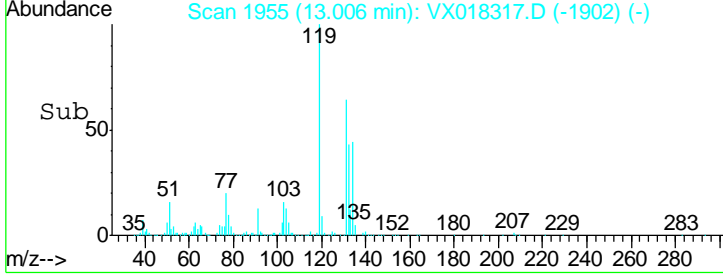
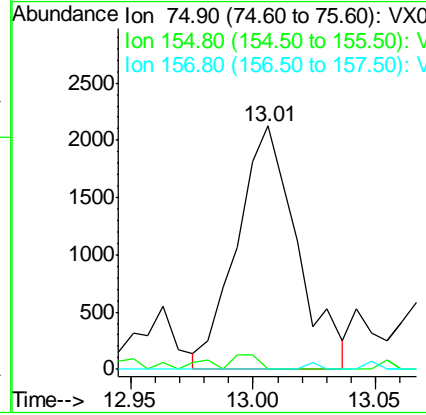
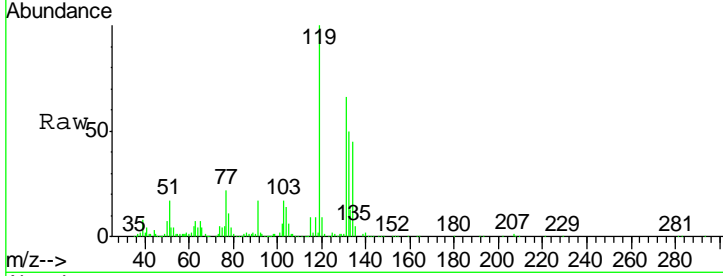




#92
 1,2-Dibromo-3-Chloropropane
 Concen: 1.730 ug/l
 RT: 13.01 min Scan# 1955
 Delta R.T. 0.02 min
 Lab File: VX018317.D
 Acq: 09 Sep 2020 13:13

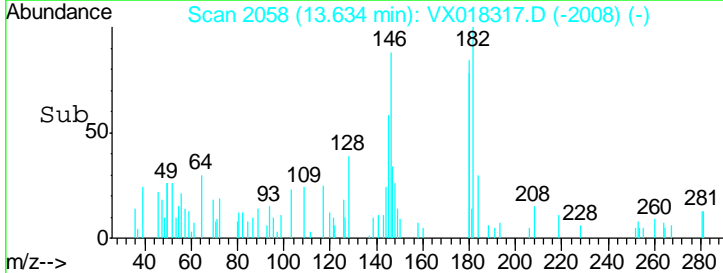
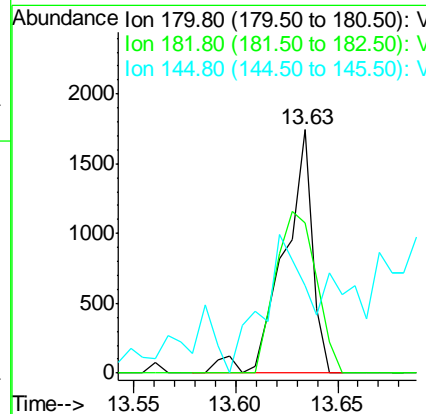
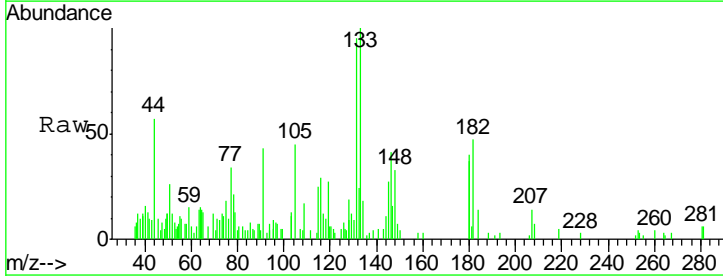
Instrument :
 MSVOA_X
 ClientSampled :
 TP-1DL

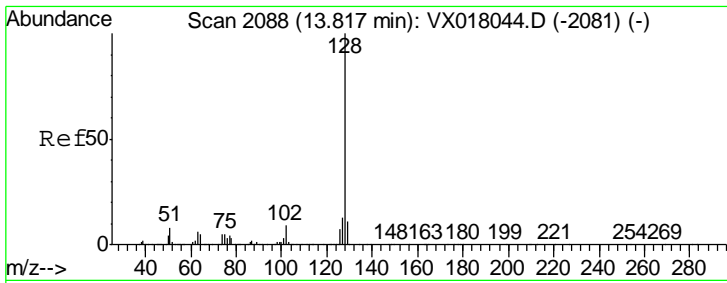
| Tgt Ion | Resp | Lower | Upper |
|---------|------|-------|--------|
| 75 | 100 | | |
| 155 | 3.9 | 40.2 | 120.6# |
| 157 | 0.0 | 55.0 | 165.2# |



#93
 1,2,4-Trichlorobenzene
 Concen: 0.236 ug/l
 RT: 13.63 min Scan# 2058
 Delta R.T. 0.01 min
 Lab File: VX018317.D
 Acq: 09 Sep 2020 13:13

| Tgt Ion | Resp | Lower | Upper |
|---------|------|-------|-------|
| 180 | 100 | | |
| 182 | 94.9 | 47.5 | 142.6 |
| 145 | 85.6 | 15.7 | 47.1# |





#95
 Naphthalene
 Concen: 592.531 ug/l
 RT: 13.82 min Scan# 2088
 Delta R.T. -0.00 min
 Lab File: VX018317.D
 Acq: 09 Sep 2020 13:13

Instrument :
 MSVOA_X
 ClientSampled :
 TP-1DL

Tgt Ion:128 Resp:14098221

| Ion | Ratio | Lower | Upper |
|-----|-------|-------|-------|
| 128 | 100 | | |
| 127 | 17.9 | 10.2 | 15.2# |
| 129 | 15.4 | 8.7 | 13.1# |

