

Data Path : Z:\VOASRV\HPCHEM1\MSVOA\_X\DATA\VX091119\  
 Data File : VX012311.D  
 Acq On : 11 Sep 2019 19:22  
 Operator : SY/SP  
 Sample : K4789-02  
 Misc : 4.39g/5.0mL/MSVOA\_X/SOIL  
 ALS Vial : 22 Sample Multiplier: 1

Instrument :  
 MSVOA\_X  
 ClientSampleId :  
 RT3465

Quant Time: Sep 12 05:41:21 2019  
 Quant Method : Z:\VOASRV\HPCHEM1\MSVOA\_X\METHOD\82X091019S.M  
 Quant Title : SW846 8260  
 QLast Update : Tue Sep 10 12:55:26 2019  
 Response via : Initial Calibration

Internal Standards	R.T.	QIon	Response	Conc	Units	Dev(Min)
1) Pentafluorobenzene	5.65	168	160808	50.00	ug/l	0.00
34) 1,4-Difluorobenzene	6.85	114	272580	50.00	ug/l	0.00
63) Chlorobenzene-d5	10.11	117	241517	50.00	ug/l	0.00
72) 1,4-Dichlorobenzene-d4	12.07	152	110599	50.00	ug/l	0.00

## System Monitoring Compounds

33) 1,2-Dichloroethane-d4	6.05	65	109132	48.00	ug/l	0.00
Spiked Amount	50.000		Recovery	=	96.00%	
35) Dibromofluoromethane	5.48	113	83828	47.97	ug/l	0.00
Spiked Amount	50.000		Recovery	=	95.94%	
50) Toluene-d8	8.71	98	325603	53.13	ug/l	0.00
Spiked Amount	50.000		Recovery	=	106.26%	
62) 4-Bromofluorobenzene	11.13	95	128062	45.07	ug/l	0.00
Spiked Amount	50.000		Recovery	=	90.14%	

## Target Compounds

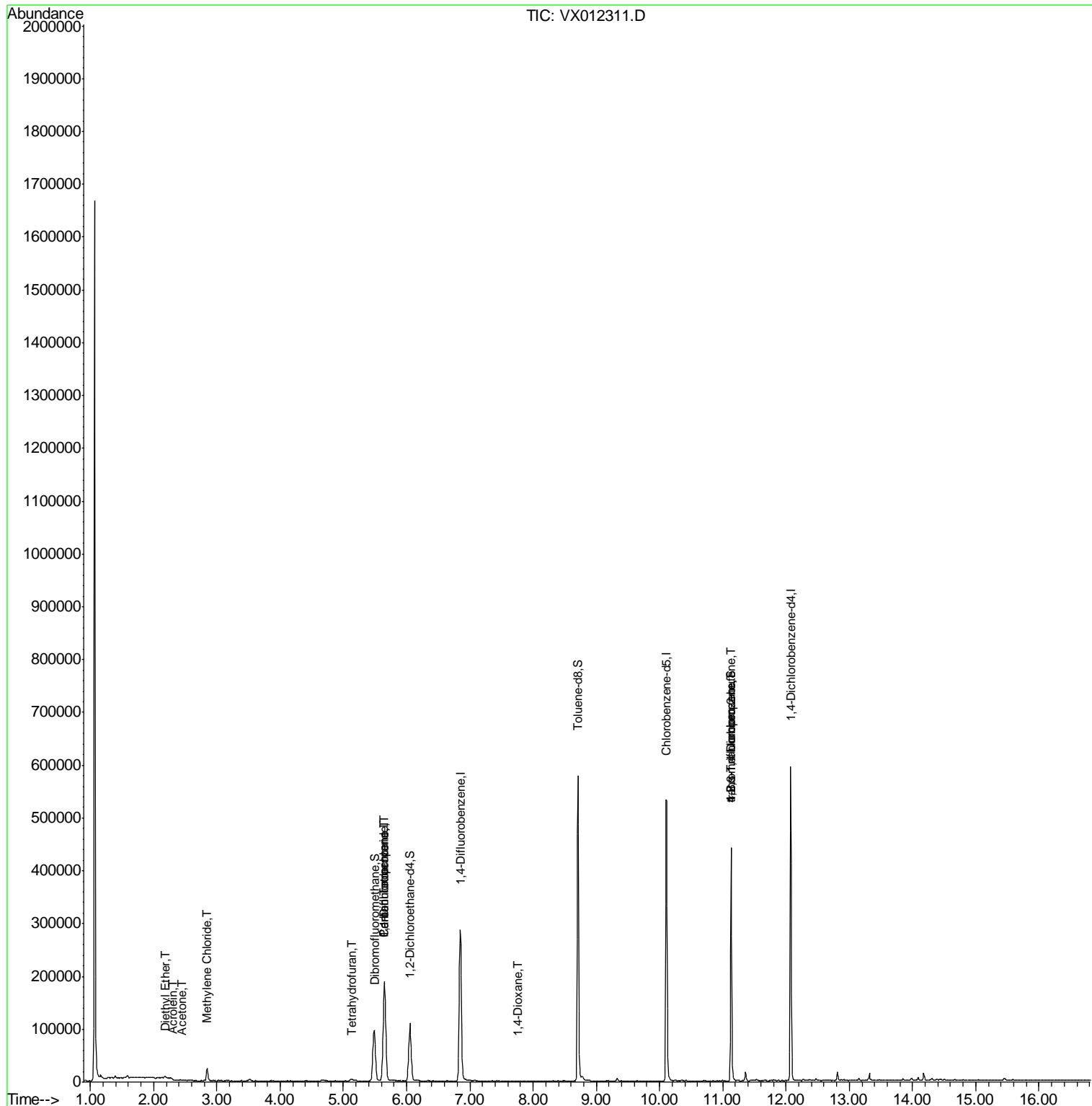
					Qvalue
5) Bromomethane	1.63	94	129	Below Cal	# 3
8) Diethyl Ether	2.18	74	1129	1.556	ug/l # 82
11) Tert butyl alcohol	3.03	59	1225	Below Cal	# 91
13) Acrolein	2.30	56	183	1.540	ug/l # 12
16) Acetone	2.44	43	1598	2.969	ug/l # 86
20) Methylene Chloride	2.84	84	10097	3.566	ug/l # 96
29) Tetrahydrofuran	5.13	42	3475	9.361	ug/l # 88
36) 1,1-Dichloropropene	5.65	75	14893	7.493	ug/l # 53
38) Carbon Tetrachloride	5.64	117	18068	7.748	ug/l # 13
49) 1,4-Dioxane	7.75	88	52	3.108	ug/l # 19
76) 1,2,3-Trichloropropane	11.13	75	66411	46.742	ug/l # 38
81) trans-1,4-Dichloro-2-buten	11.13	75	66411	140.049	ug/l # 5

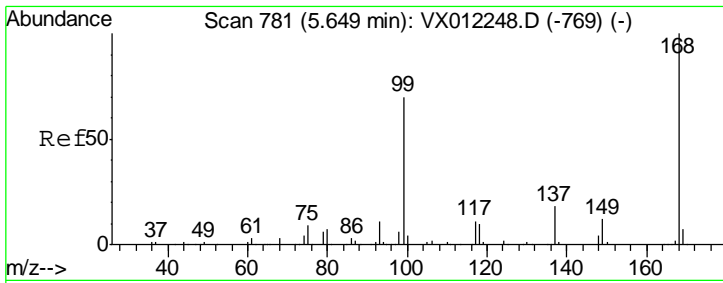
(#) = qualifier out of range (m) = manual integration (+) = signals summed

Data Path : Z:\VOASRV\HPCHEM1\MSVOA\_X\DATA\VX091119\  
 Data File : VX012311.D  
 Acq On : 11 Sep 2019 19:22  
 Operator : SY/SP  
 Sample : K4789-02  
 Misc : 4.39g/5.0mL/MSVOA\_X/SOIL  
 ALS Vial : 22 Sample Multiplier: 1

Instrument :  
 MSVOA\_X  
 ClientSampleId :  
 RT3465

Quant Time: Sep 12 05:41:21 2019  
 Quant Method : Z:\VOASRV\HPCHEM1\MSVOA\_X\METHOD\82X091019S.M  
 Quant Title : SW846 8260  
 QLast Update : Tue Sep 10 12:55:26 2019  
 Response via : Initial Calibration

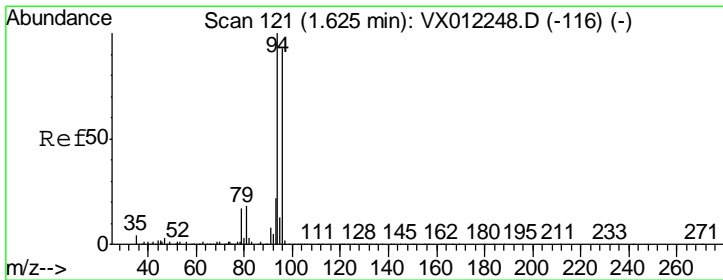
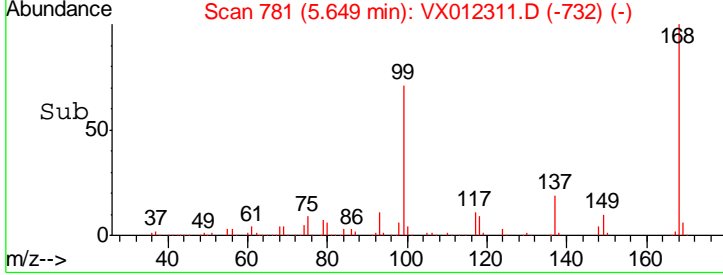
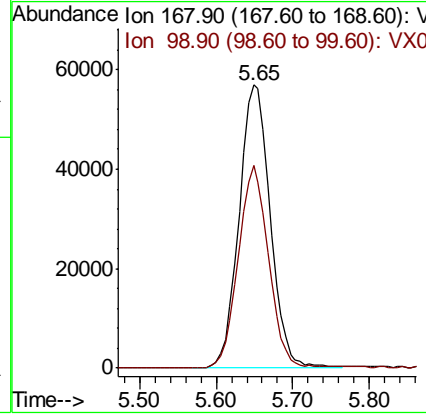
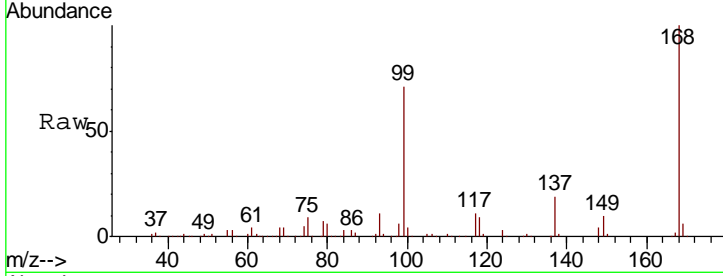




#1  
 Pentafluorobenzene  
 Concen: 50.000 ug/l  
 RT: 5.65 min Scan# 781  
 Delta R.T. 0.00 min  
 Lab File: VX012311.D  
 Acq: 11 Sep 2019 19:22

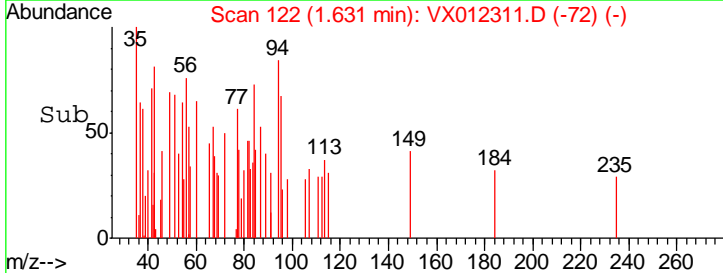
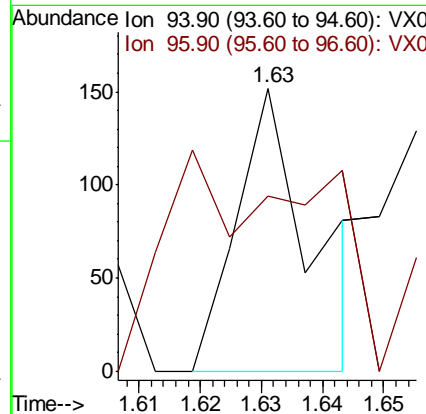
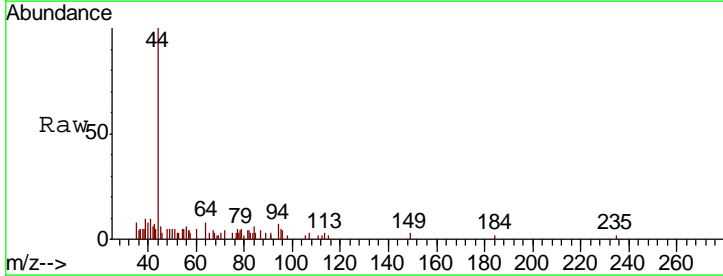
Instrument : MSVOA\_X  
 ClientSampleID : RT3465

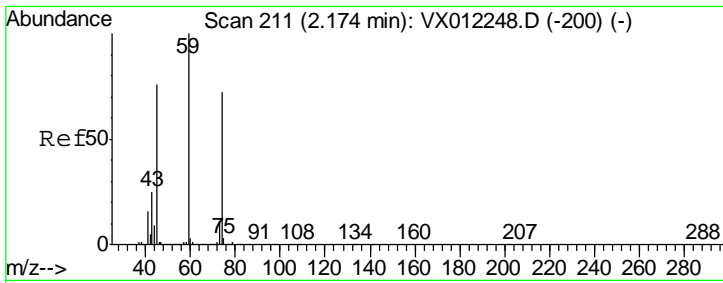
Tgt Ion: 168 Resp: 160808  
 Ion Ratio Lower Upper  
 168 100  
 99 71.4 55.8 83.6



#5  
 Bromomethane  
 Concen: Below Cal  
 RT: 1.63 min Scan# 122  
 Delta R.T. 0.01 min  
 Lab File: VX012311.D  
 Acq: 11 Sep 2019 19:22

Tgt Ion: 94 Resp: 129  
 Ion Ratio Lower Upper  
 94 100  
 96 0.0 74.0 111.0#

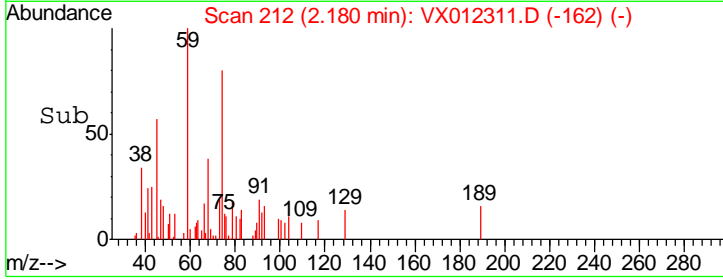
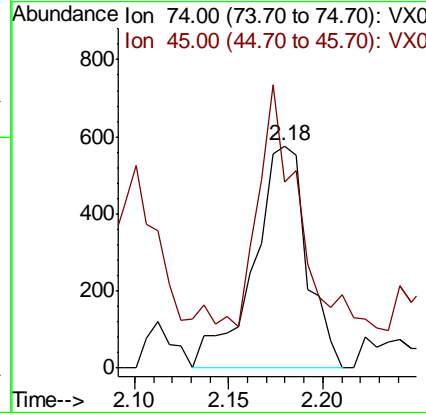
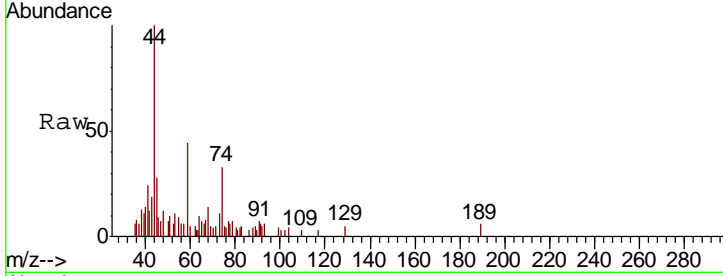




#8  
 Diethyl Ether  
 Concen: 1.556 ug/l  
 RT: 2.18 min Scan# 212  
 Delta R.T. 0.01 min  
 Lab File: VX012311.D  
 Acq: 11 Sep 2019 19:22

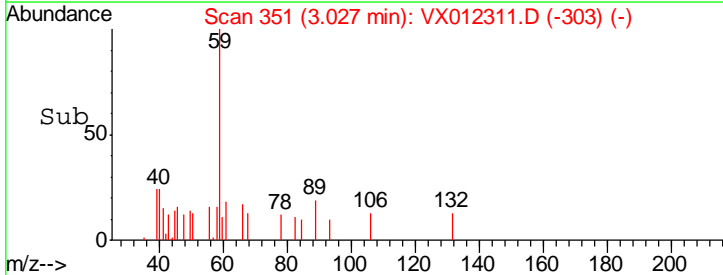
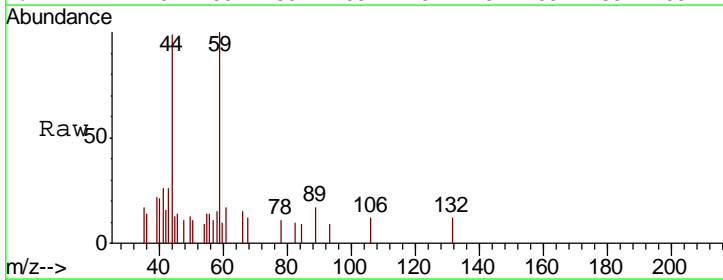
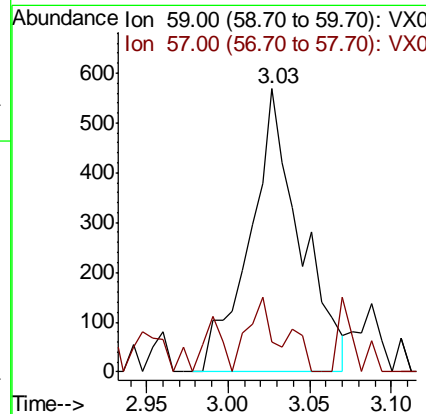
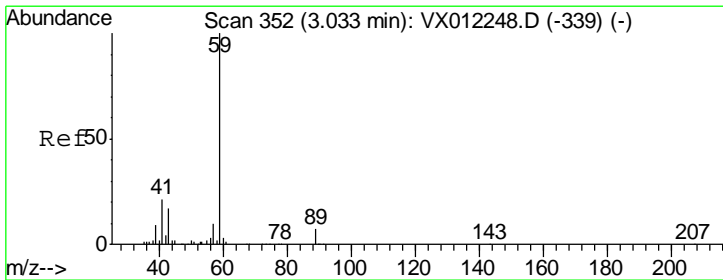
**Instrument :**  
 MSVOA\_X  
**ClientSampled :**  
 RT3465

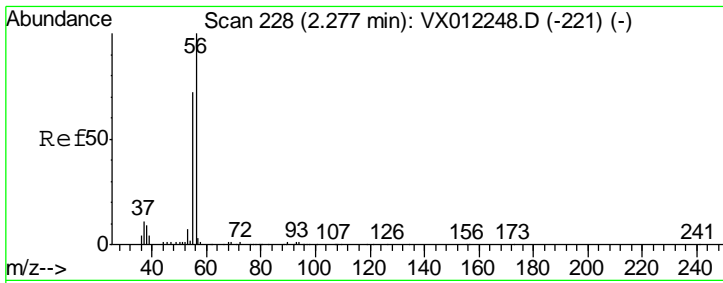
Tgt Ion: 74 Resp: 1129  
 Ion Ratio Lower Upper  
 74 100  
 45 84.0 51.3 153.9



#11  
 Tert butyl alcohol  
 Concen: Below Cal  
 RT: 3.03 min Scan# 351  
 Delta R.T. -0.01 min  
 Lab File: VX012311.D  
 Acq: 11 Sep 2019 19:22

Tgt Ion: 59 Resp: 1225  
 Ion Ratio Lower Upper  
 59 100  
 57 13.0 7.8 11.6#

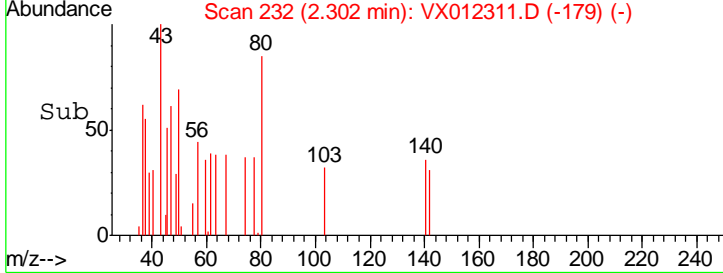
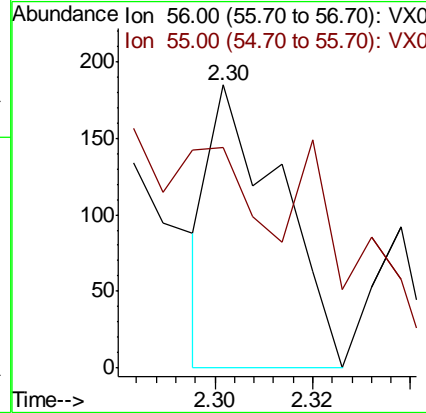
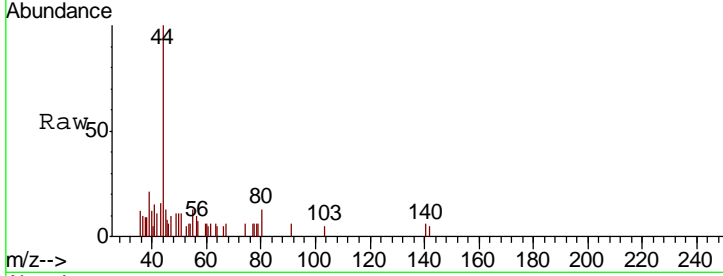




#13  
 Acrolein  
 Concen: 1.540 ug/l  
 RT: 2.30 min Scan# 232  
 Delta R.T. 0.02 min  
 Lab File: VX012311.D  
 Acq: 11 Sep 2019 19:22

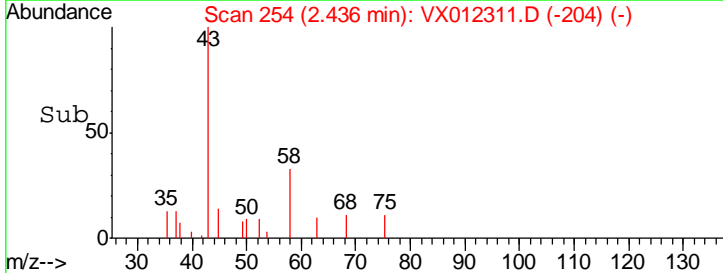
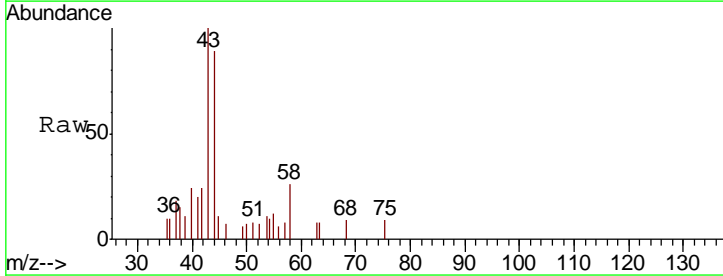
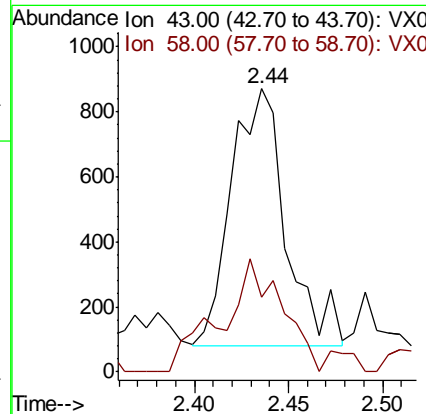
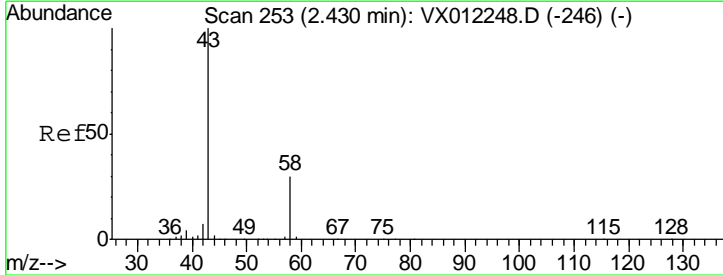
Instrument : MSVOA\_X  
 ClientSampled : RT3465

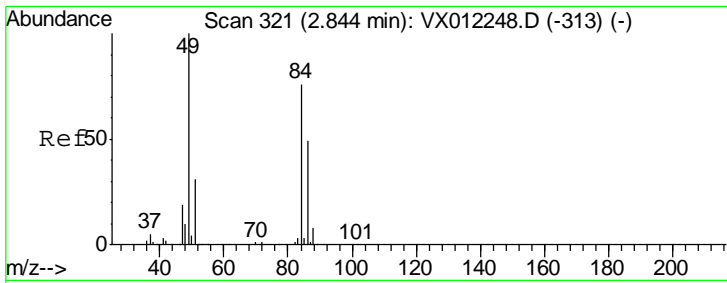
Tgt Ion: 56 Resp: 183  
 Ion Ratio Lower Upper  
 56 100  
 55 0.0 59.8 89.6#



#16  
 Acetone  
 Concen: 2.969 ug/l  
 RT: 2.44 min Scan# 254  
 Delta R.T. 0.01 min  
 Lab File: VX012311.D  
 Acq: 11 Sep 2019 19:22

Tgt Ion: 43 Resp: 1598  
 Ion Ratio Lower Upper  
 43 100  
 58 21.9 23.6 35.4#

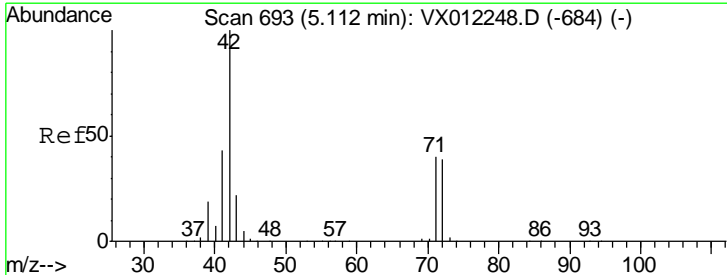
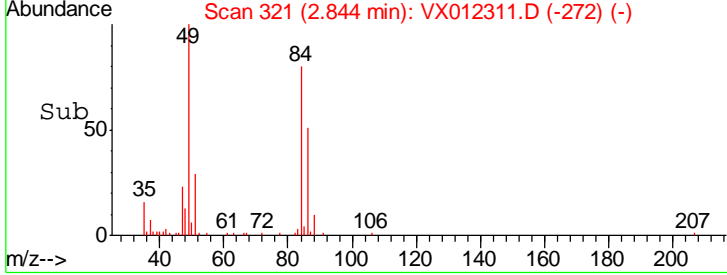
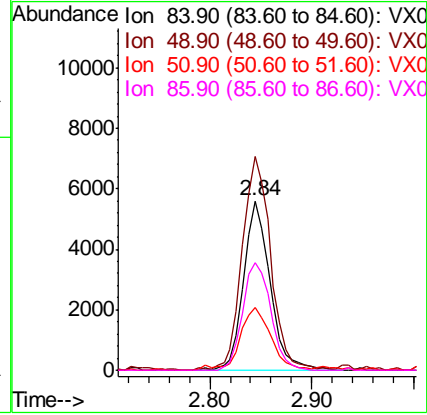
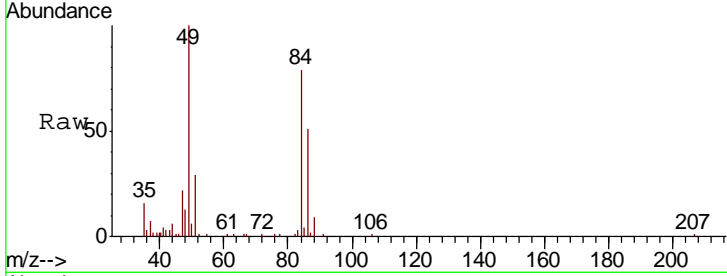




#20  
 Methylene Chloride  
 Concen: 3.566 ug/l  
 RT: 2.84 min Scan# 321  
 Delta R.T. 0.00 min  
 Lab File: VX012311.D  
 Acq: 11 Sep 2019 19:22

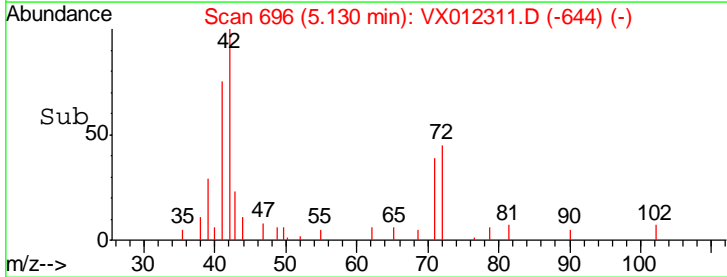
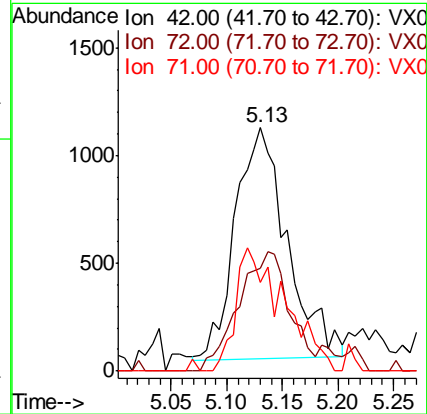
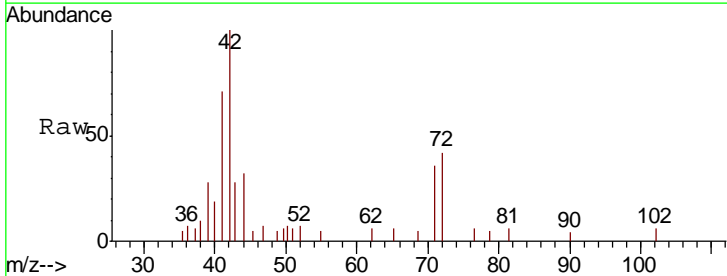
Instrument :  
 MSVOA\_X  
 ClientSampled :  
 RT3465

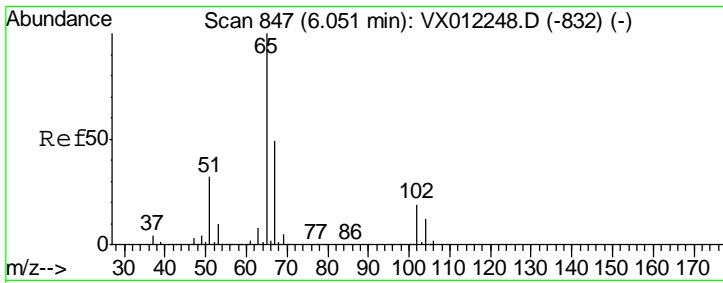
Tgt Ion	Resp	Lower	Upper
84	10097		
49	125.9	105.0	157.6
51	37.0	32.6	48.8
86	63.7	51.8	77.6



#29  
 Tetrahydrofuran  
 Concen: 9.361 ug/l  
 RT: 5.13 min Scan# 696  
 Delta R.T. 0.02 min  
 Lab File: VX012311.D  
 Acq: 11 Sep 2019 19:22

Tgt Ion	Resp	Lower	Upper
42	3475		
72	51.1	35.2	52.8
71	49.4	32.5	48.7#

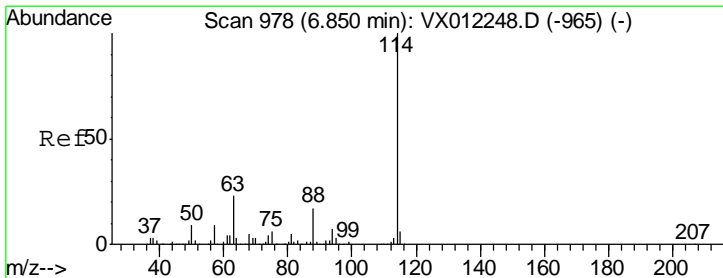
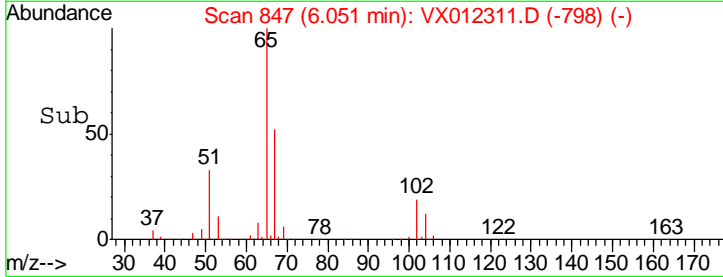
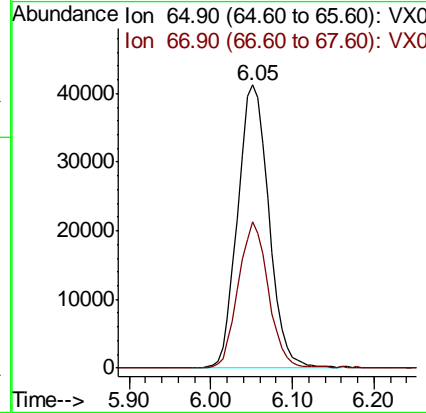
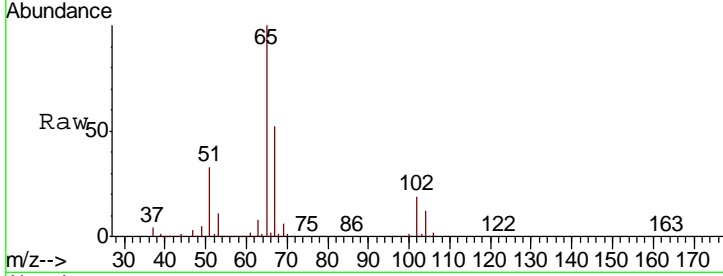




#33  
 1,2-Dichloroethane-d4  
 Concen: 48.002 ug/l  
 RT: 6.05 min Scan# 847  
 Delta R.T. 0.00 min  
 Lab File: VX012311.D  
 Acq: 11 Sep 2019 19:22

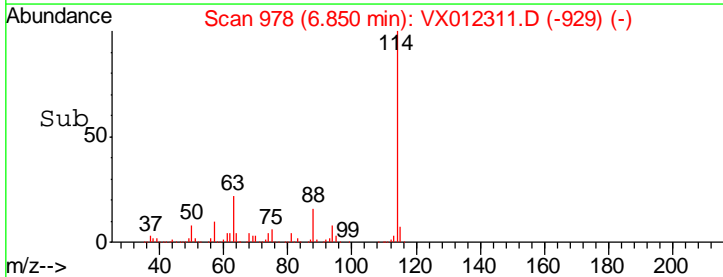
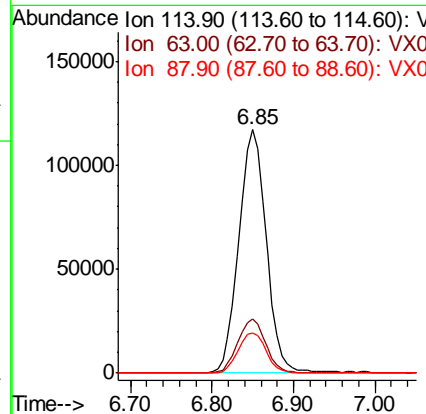
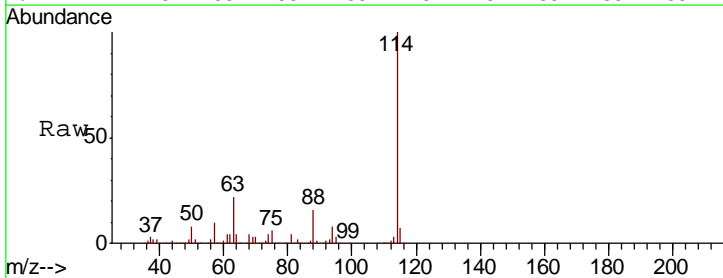
Instrument :  
 MSVOA\_X  
 ClientSampled :  
 RT3465

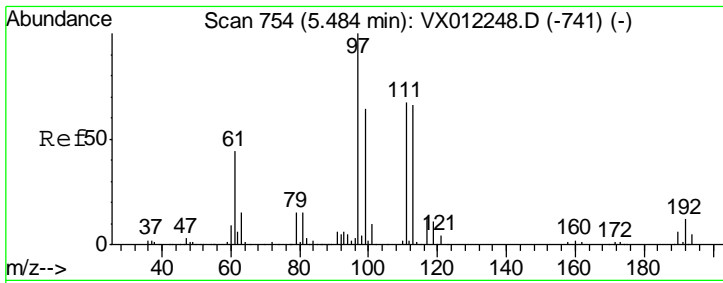
Tgt Ion	Resp	Lower	Upper
65	109132		
67	50.0	0.0	99.8



#34  
 1,4-Difluorobenzene  
 Concen: 50.000 ug/l  
 RT: 6.85 min Scan# 978  
 Delta R.T. 0.00 min  
 Lab File: VX012311.D  
 Acq: 11 Sep 2019 19:22

Tgt Ion	Resp	Lower	Upper
114	272580		
63	22.1	0.0	45.2
88	16.4	0.0	34.8

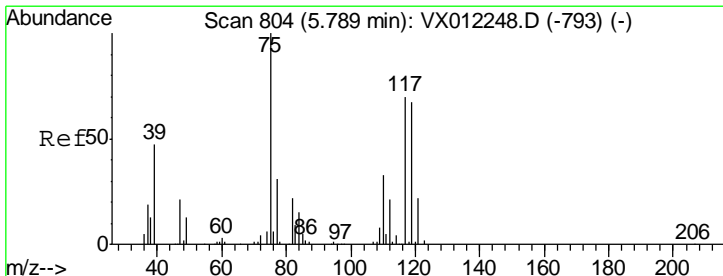
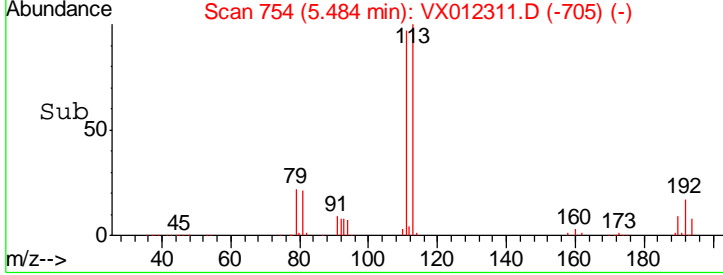
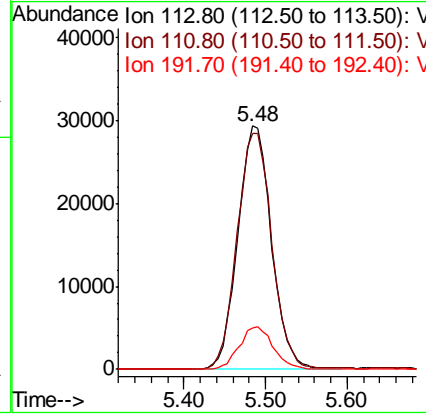
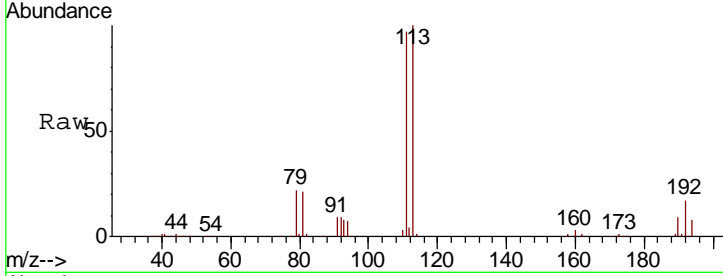




#35  
 Dibromofluoromethane  
 Concen: 47.974 ug/l  
 RT: 5.48 min Scan# 754  
 Delta R.T. 0.00 min  
 Lab File: VX012311.D  
 Acq: 11 Sep 2019 19:22

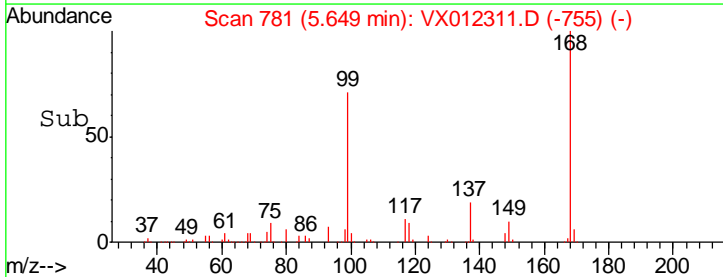
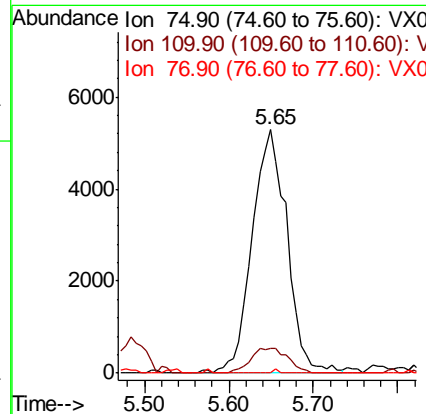
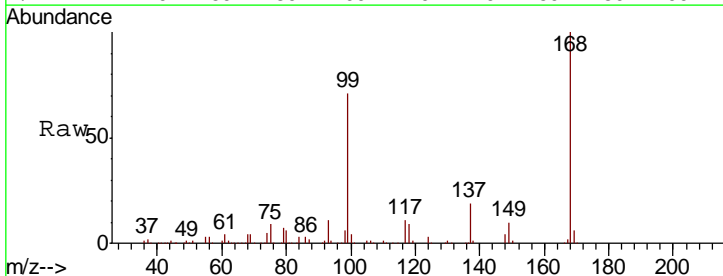
Instrument : MSVOA\_X  
 ClientSampled : RT3465

Tgt Ion	Resp	Lower	Upper
113	83828		
111	100.2	83.0	124.6
192	17.8	14.3	21.5

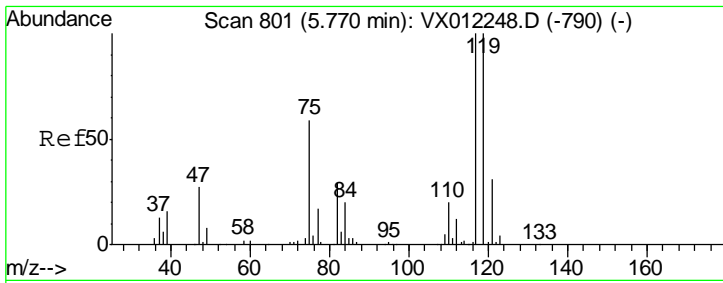


#36  
 1,1-Dichloropropene  
 Concen: 7.493 ug/l  
 RT: 5.65 min Scan# 781  
 Delta R.T. -0.14 min  
 Lab File: VX012311.D  
 Acq: 11 Sep 2019 19:22

Tgt Ion	Resp	Lower	Upper
75	14893		
110	10.9	16.8	50.4#
77	0.2	24.5	36.7#



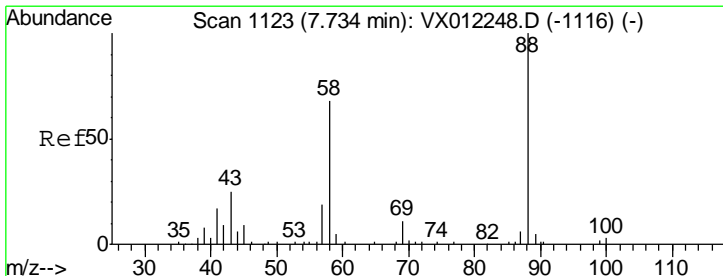
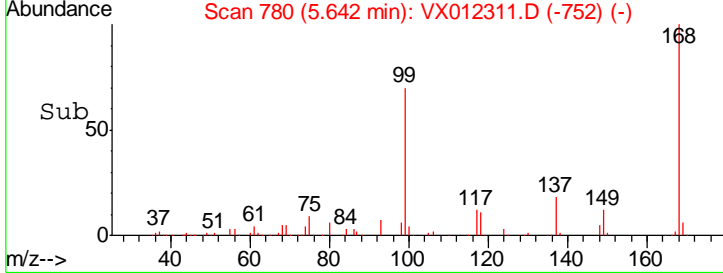
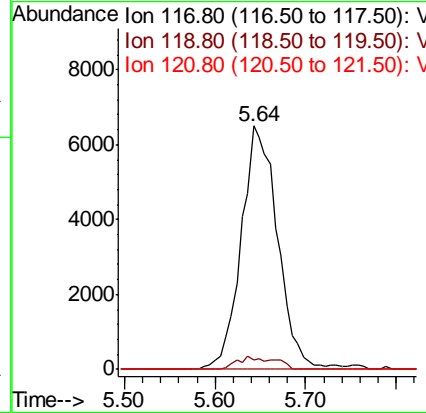
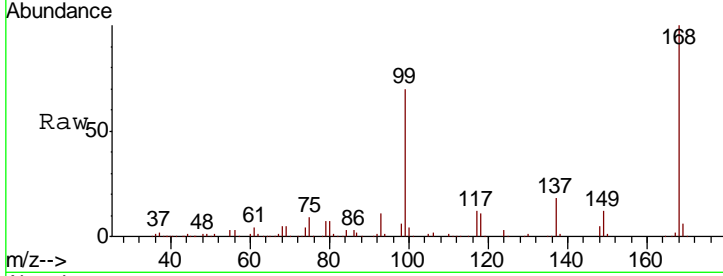




#38  
 Carbon Tetrachloride  
 Concen: 7.748 ug/l  
 RT: 5.64 min Scan# 780  
 Delta R.T. -0.13 min  
 Lab File: VX012311.D  
 Acq: 11 Sep 2019 19:22

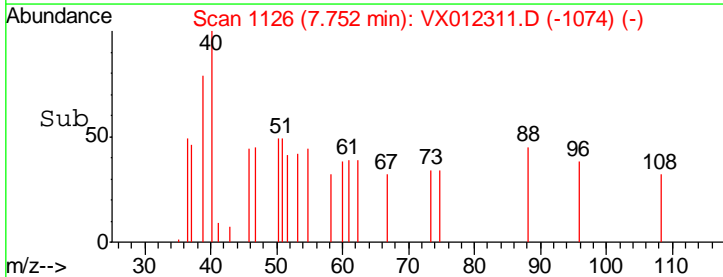
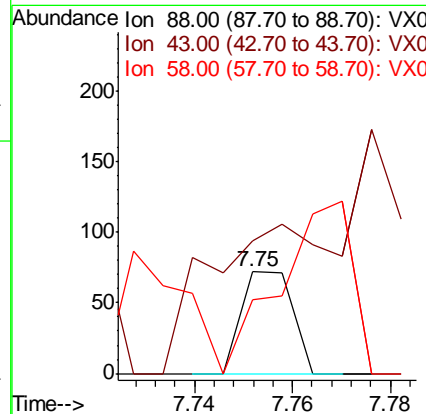
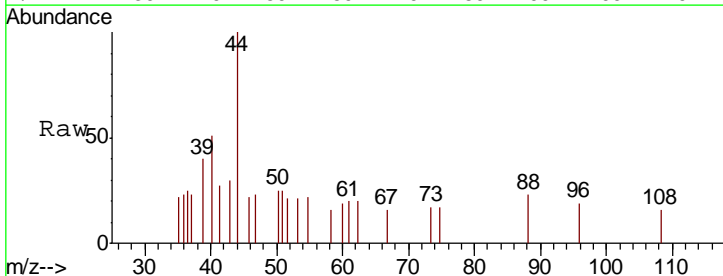
Instrument :  
 MSVOA\_X  
 ClientSampled :  
 RT3465

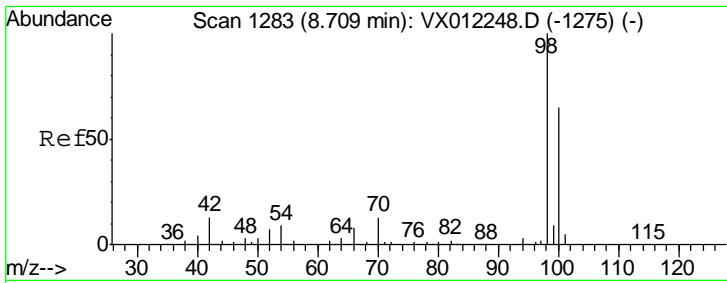
Tgt Ion	Resp	Lower	Upper
117	18068		
117	100		
119	3.7	79.6	119.4#
121	0.0	24.7	37.1#



#49  
 1,4-Dioxane  
 Concen: 3.108 ug/l  
 RT: 7.75 min Scan# 1126  
 Delta R.T. 0.02 min  
 Lab File: VX012311.D  
 Acq: 11 Sep 2019 19:22

Tgt Ion	Resp	Lower	Upper
88	52		
88	100		
43	0.0	31.0	46.4#
58	0.0	61.5	92.3#

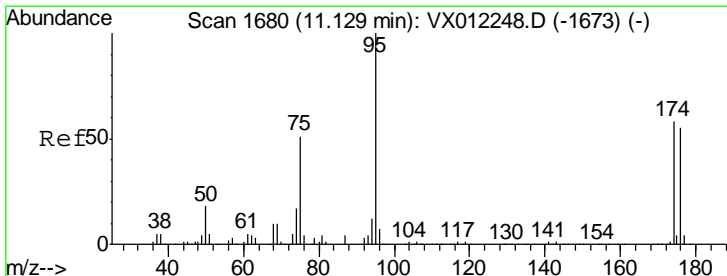
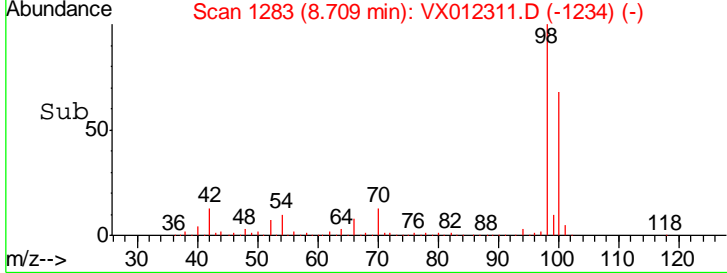
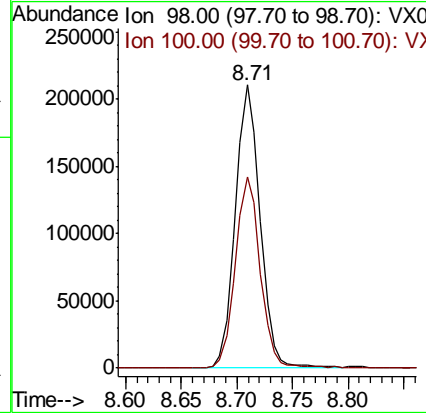
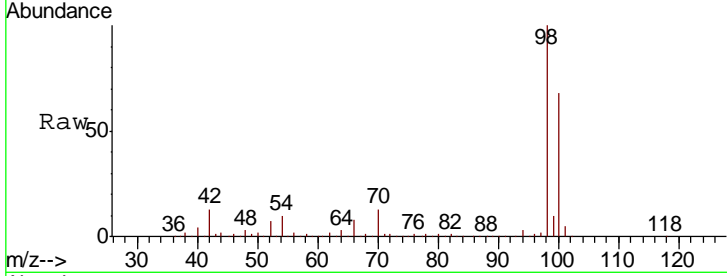




#50  
 Toluene-d8  
 Concen: 53.128 ug/l  
 RT: 8.71 min Scan# 1283  
 Delta R.T. 0.00 min  
 Lab File: VX012311.D  
 Acq: 11 Sep 2019 19:22

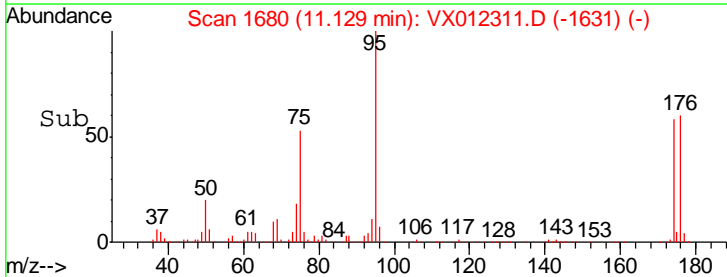
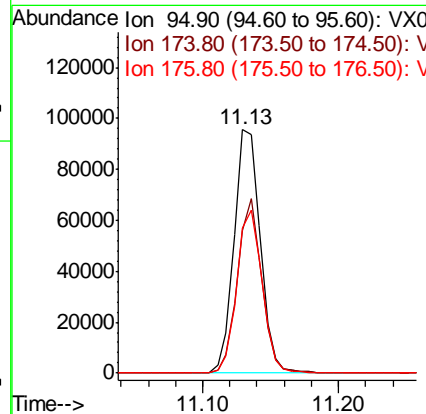
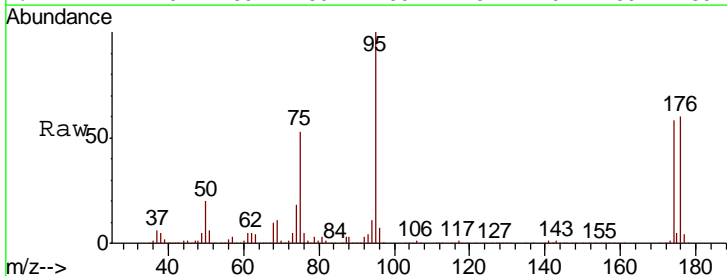
Instrument :  
 MSVOA\_X  
 ClientSampled :  
 RT3465

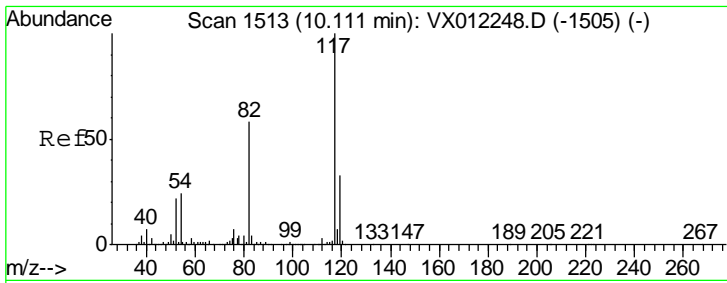
Tgt Ion: 98 Resp: 325603  
 Ion Ratio Lower Upper  
 98 100  
 100 68.3 54.1 81.1



#62  
 4-Bromofluorobenzene  
 Concen: 45.073 ug/l  
 RT: 11.13 min Scan# 1680  
 Delta R.T. 0.00 min  
 Lab File: VX012311.D  
 Acq: 11 Sep 2019 19:22

Tgt Ion: 95 Resp: 128062  
 Ion Ratio Lower Upper  
 95 100  
 174 66.4 0.0 127.0  
 176 65.4 0.0 125.8

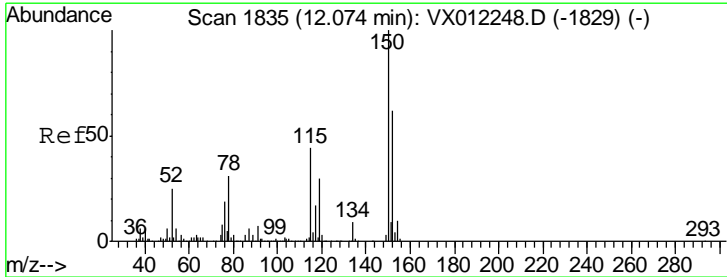
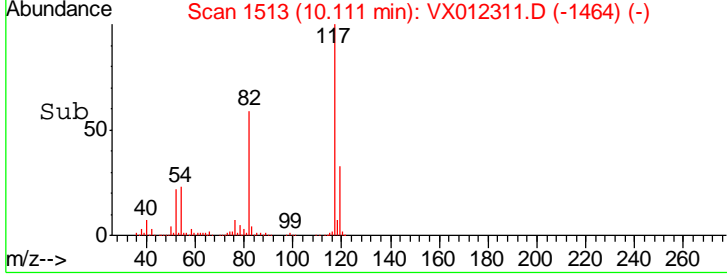
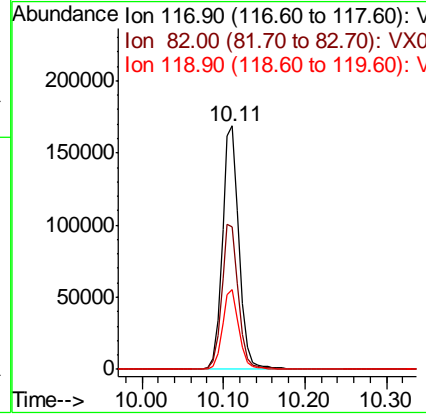
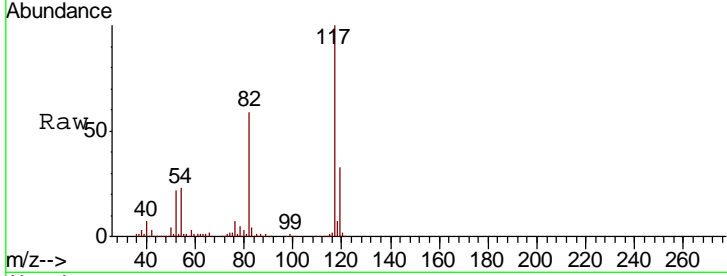




#63  
 Chlorobenzene-d5  
 Concen: 50.000 ug/l  
 RT: 10.11 min Scan# 1513  
 Delta R.T. 0.00 min  
 Lab File: VX012311.D  
 Acq: 11 Sep 2019 19:22

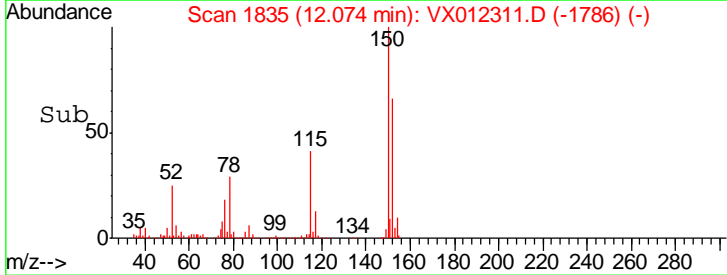
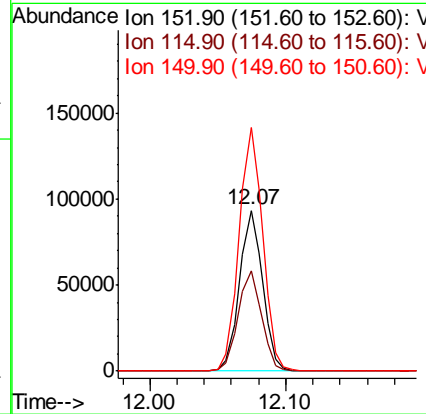
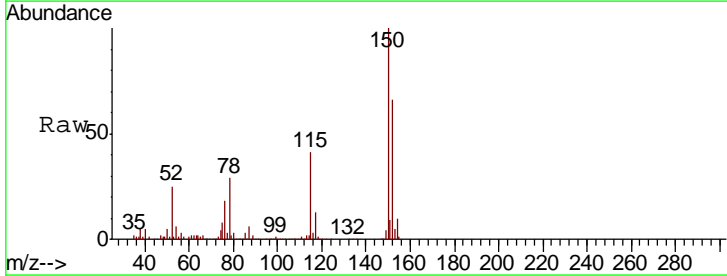
Instrument :  
 MSVOA\_X  
 ClientSampled :  
 RT3465

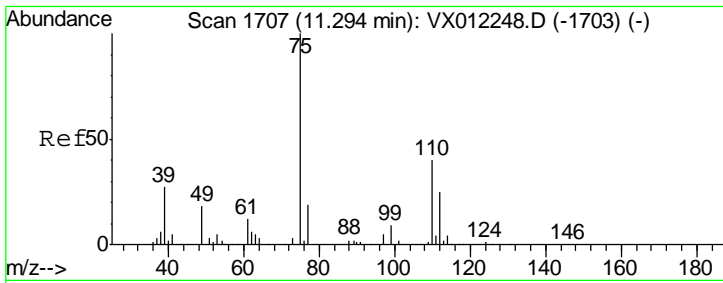
Tgt Ion	Resp	Lower	Upper
117	241517		
82	58.6	46.4	69.6
119	32.8	26.6	39.8



#72  
 1,4-Dichlorobenzene-d4  
 Concen: 50.000 ug/l  
 RT: 12.07 min Scan# 1835  
 Delta R.T. 0.00 min  
 Lab File: VX012311.D  
 Acq: 11 Sep 2019 19:22

Tgt Ion	Resp	Lower	Upper
152	110599		
115	63.4	45.5	136.4
150	154.8	0.0	346.4

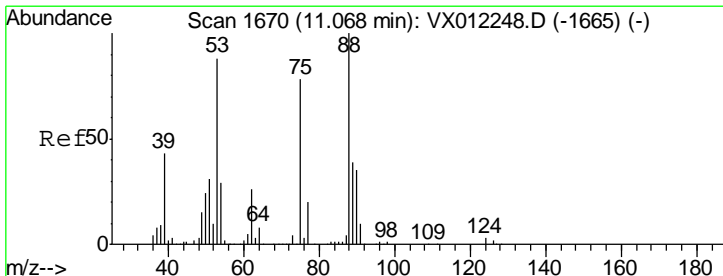
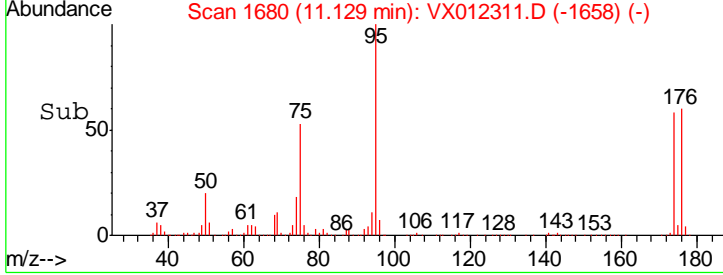
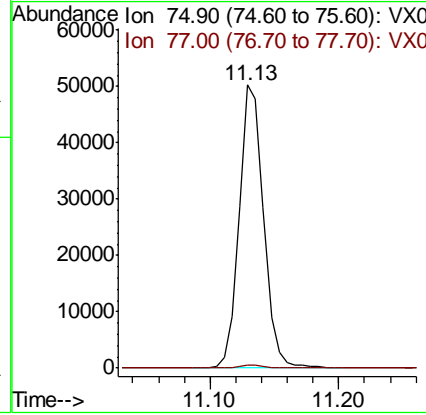
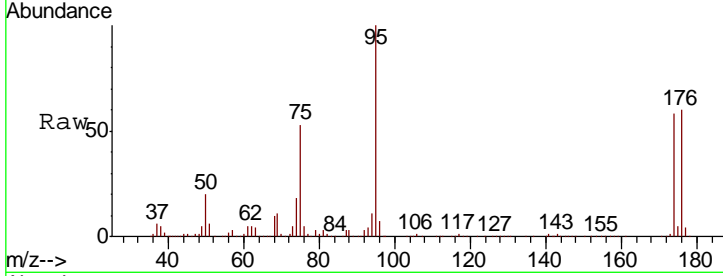




#76  
 1,2,3-Trichloropropane  
 Concen: 46.742 ug/l  
 RT: 11.13 min Scan# 1680  
 Delta R.T. -0.16 min  
 Lab File: VX012311.D  
 Acq: 11 Sep 2019 19:22

Instrument :  
 MSVOA\_X  
 ClientSampled :  
 RT3465

Tgt Ion: 75 Resp: 66411  
 Ion Ratio Lower Upper  
 75 100  
 77 1.3 19.7 59.0#



#81  
 trans-1,4-Dichloro-2-butene  
 Concen: 140.049 ug/l  
 RT: 11.13 min Scan# 1680  
 Delta R.T. 0.06 min  
 Lab File: VX012311.D  
 Acq: 11 Sep 2019 19:22

Tgt Ion: 75 Resp: 66411  
 Ion Ratio Lower Upper  
 75 100  
 53 0.0 88.1 132.1#  
 89 0.1 43.5 65.3#

