

Data Path : Z:\VOASRV\HPCHEM1\MSVOA X\DATA\VX091218\
 Data File : VX004499.D
 Acq On : 12 Sep 2018 17:15
 Operator : JC/MD
 Sample : J4724-18 50X
 Misc : 3.19µ/5mL/100uL/5.00mL/MSVOA_X/MEOH
 ALS Vial : 17 Sample Multiplier: 1

Instrument :
 MSVOA_X
 ClientSampleId :
 EP1-SUT-4USTS-SB

Quant Time: Sep 13 01:03:54 2018
 Quant Method : Z:\VOASRV\HPCHEM1\MSVOA_X\METHOD\82X091118W.M
 Quant Title : SW846 8260
 QLast Update : Wed Sep 12 02:17:23 2018
 Response via : Initial Calibration

Internal Standards	R.T.	QIon	Response	Conc	Units	Dev(Min)
1) Pentafluorobenzene	5.67	168	206113	50.00	µg/l	0.00
34) 1,4-Difluorobenzene	6.86	114	327889	50.00	µg/l	0.00
63) Chlorobenzene-d5	10.12	117	335051	50.00	µg/l	0.00
72) 1,4-Dichlorobenzene-d4	12.08	152	190092	50.00	µg/l	0.00

System Monitoring Compounds

33) 1,2-Dichloroethane-d4	6.07	65	142997	53.81	µg/l	0.00
Spiked Amount	50.000		Recovery	=	107.62%	
35) Dibromofluoromethane	5.51	113	126164	42.05	µg/l	0.00
Spiked Amount	50.000		Recovery	=	84.10%	
50) Toluene-d8	8.72	98	474691	47.18	µg/l	0.00
Spiked Amount	50.000		Recovery	=	94.36%	
62) 4-Bromofluorobenzene	11.14	95	191513	53.32	µg/l	0.00
Spiked Amount	50.000		Recovery	=	106.64%	

Target Compounds

	R.T.	QIon	Response	Conc	Units	Qvalue
3) Chloromethane	1.32	50	602	0.23	µg/l	92
5) Bromomethane	1.64	94	614	Below	Cal	95
10) Methyl Iodide	2.52	142	429	4.40	µg/l #	65
11) Tert butyl alcohol	3.07	59	245	0.39	µg/l #	72
16) Acetone	2.45	43	970	0.75	µg/l #	88
20) Methylene Chloride	2.85	84	657	0.25	µg/l #	85
29) Tetrahydrofuran	5.17	42	463	0.37	µg/l #	49
36) 1,1-Dichloropropene	5.67	75	13945	3.50	µg/l #	49
38) Carbon Tetrachloride	5.67	117	18087	4.65	µg/l #	15
39) Methylcyclohexane	7.46	83	1275	0.31	µg/l	92
55) 1,1,2-Trichloroethane	9.16	97	3526	1.18	µg/l #	21
59) 2-Hexanone	9.55	43	7542	2.32	µg/l #	41
67) Ethyl Benzene	10.26	91	33808	2.50	µg/l	99
68) m/p-Xylenes	10.36	106	18445	3.54	µg/l	87
69) o-Xylene	10.70	106	1949	0.39	µg/l	98
73) Isopropylbenzene	11.02	105	111247	8.89	µg/l	99
74) N-amyl acetate	10.91	43	61467	11.66	µg/l #	1
75) 1,1,2,2-Tetrachloroethane	11.27	83	45864	11.36	µg/l #	25
76) 1,2,3-Trichloropropane	11.43	75	7374	1.93	µg/l #	1
78) n-propylbenzene	11.36	91	321936	22.36	µg/l	99
79) 2-Chlorotoluene	11.43	91	112527	12.89	µg/l #	40
80) 1,3,5-Trimethylbenzene	11.51	105	617268	58.65	µg/l	97
81) trans-1,4-Dichloro-2-buten	11.14	75	88577	73.82	µg/l #	14
82) 4-Chlorotoluene	11.51	91	62804	6.16	µg/l #	45
83) tert-Butylbenzene	11.77	119	26504	2.65	µg/l	87
84) 1,2,4-Trimethylbenzene	11.81	105	2001033	186.22	µg/l	100
85) sec-Butylbenzene	11.95	105	193765	15.18	µg/l	78
86) p-Isopropyltoluene	12.07	119	155184	13.76	µg/l	99
89) n-Butylbenzene	12.39	91	264211	25.71	µg/l #	46
90) Hexachloroethane	12.59	117	21787	12.07	µg/l #	3
92) 1,2-Dibromo-3-Chloropropan	13.02	75	1820	2.11	µg/l #	1
95) Naphthalene	13.83	128	124902	9.62	µg/l	98

Data Path : Z:\VOASRV\HPCHEM1\MSVOA X\DATA\VX091218\
 Data File : VX004499.D
 Acq On : 12 Sep 2018 17:15
 Operator : JC/MD
 Sample : J4724-18 50X
 Misc : 3.19g/5mL/100uL/5.00mL/MSVOA_X/MEOH
 ALS Vial : 17 Sample Multiplier: 1

Instrument :
 MSVOA_X
ClientSampleId :
 EP1-SUT-4USTS-SB

Quant Time: Sep 13 01:03:54 2018
 Quant Method : Z:\VOASRV\HPCHEM1\MSVOA_X\METHOD\82X091118W.M
 Quant Title : SW846 8260
 QLast Update : Wed Sep 12 02:17:23 2018
 Response via : Initial Calibration

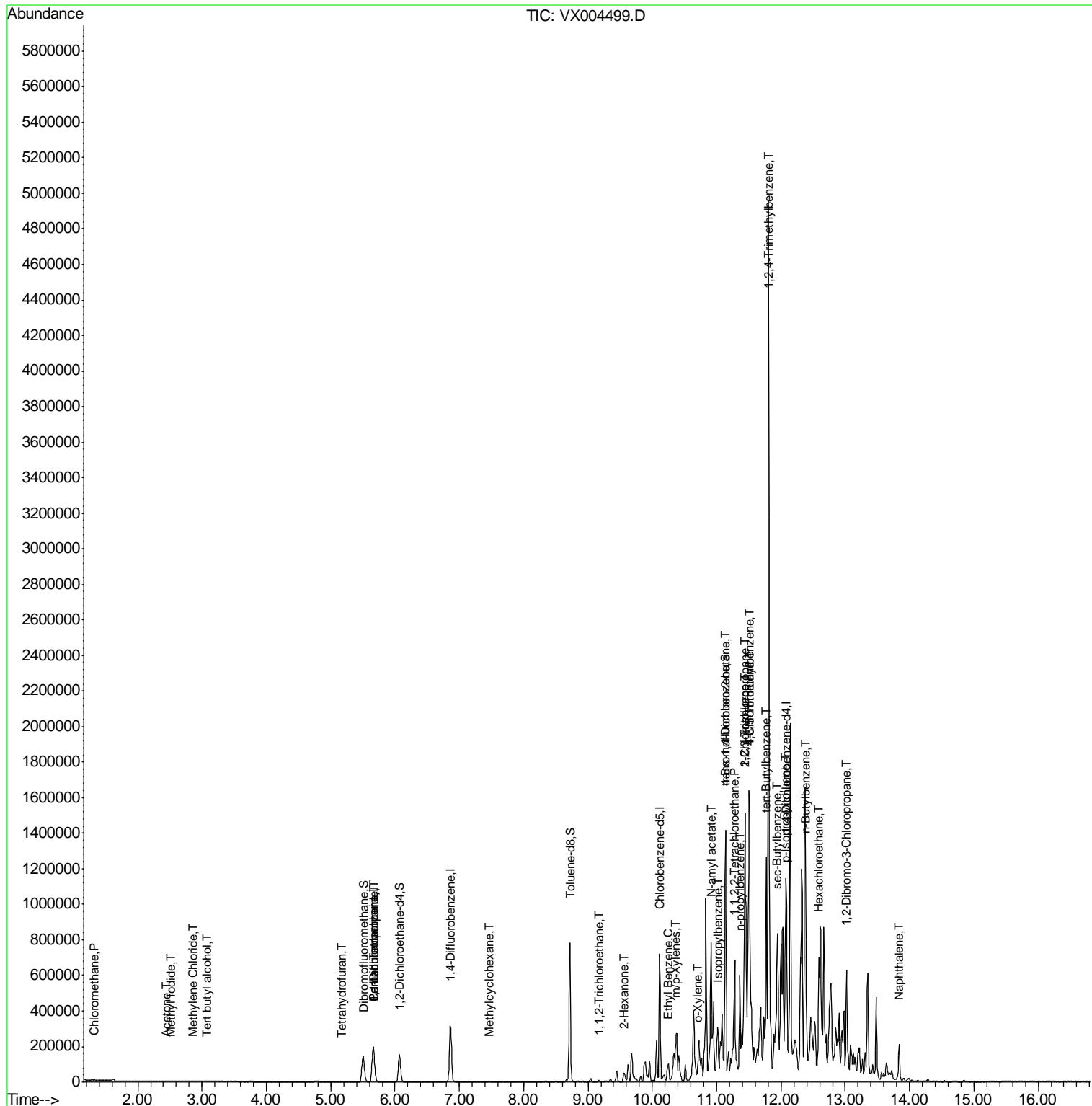
Internal Standards	R.T.	QIon	Response	Conc	Units	Dev(Min)

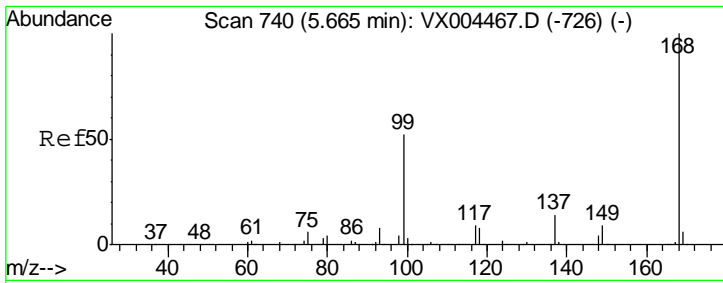
(#) = qualifier out of range (m) = manual integration (+) = signals summed						

Data Path : Z:\VOASRV\HPCHEM1\MSVOA X\DATA\VX091218\
 Data File : VX004499.D
 Acq On : 12 Sep 2018 17:15
 Operator : JC/MD
 Sample : J4724-18 50X
 Misc : 3.19µ/5mL/100uL/5.00mL/MSVOA_X/MEOH
 ALS Vial : 17 Sample Multiplier: 1

Instrument :
 MSVOA_X
 Client Sampled :
 EP1-SUT-4USTS-SB

Quant Time: Sep 13 01:03:54 2018
 Quant Method : Z:\VOASRV\HPCHEM1\MSVOA_X\METHOD\82X091118W.M
 Quant Title : SW846 8260
 QLast Update : Wed Sep 12 02:17:23 2018
 Response via : Initial Calibration

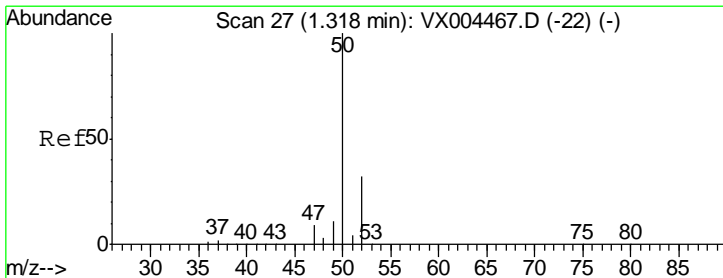
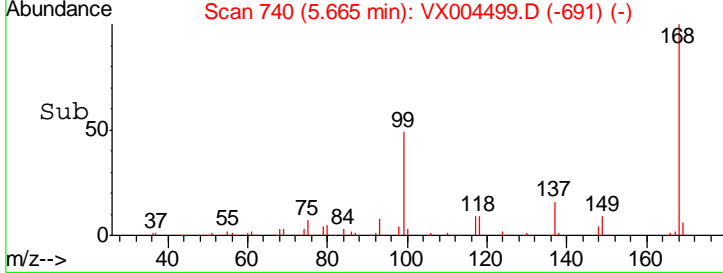
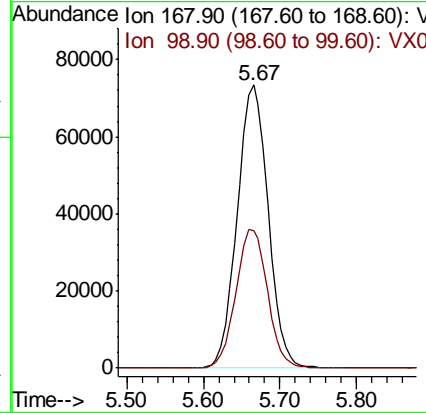
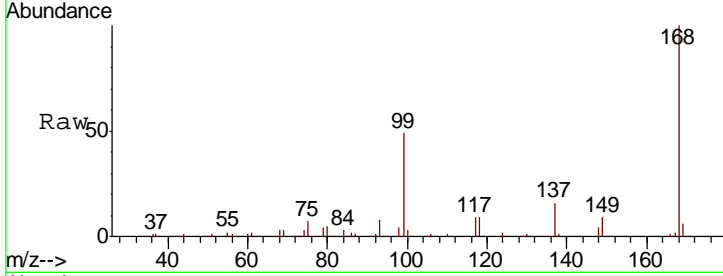




#1
 Pentafluorobenzene
 Concen: 50.00 ug/l
 RT: 5.67 min Scan# 740
 Delta R.T. 0.00 min
 Lab File: VX004499.D
 Acq: 12 Sep 2018 17:15

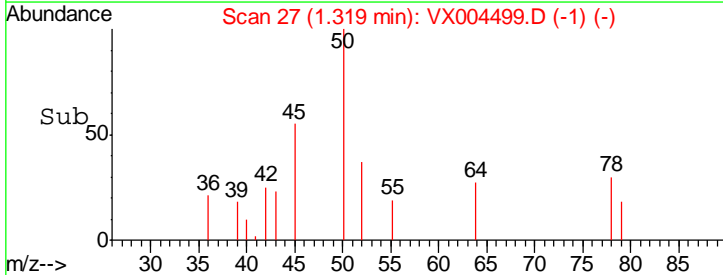
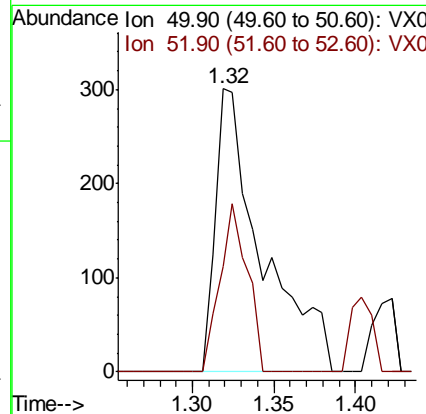
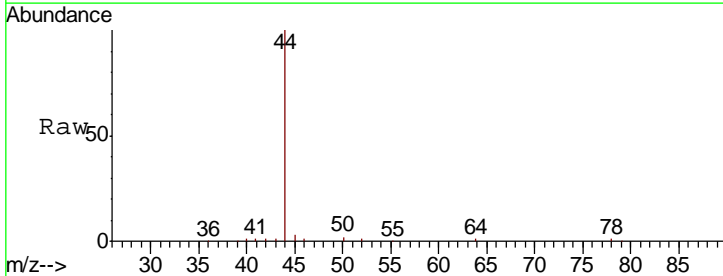
Instrument :
 MSVOA_X
 ClientSampleId :
 EP1-SUT-4USTS-SB

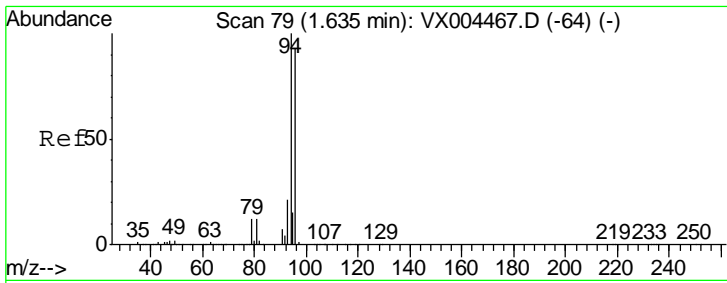
Tgt Ion: 168 Resp: 206113
 Ion Ratio Lower Upper
 168 100
 99 48.6 39.9 59.9



#3
 Chloromethane
 Concen: 0.23 ug/l
 RT: 1.32 min Scan# 27
 Delta R.T. 0.00 min
 Lab File: VX004499.D
 Acq: 12 Sep 2018 17:15

Tgt Ion: 50 Resp: 602
 Ion Ratio Lower Upper
 50 100
 52 37.2 26.2 39.2

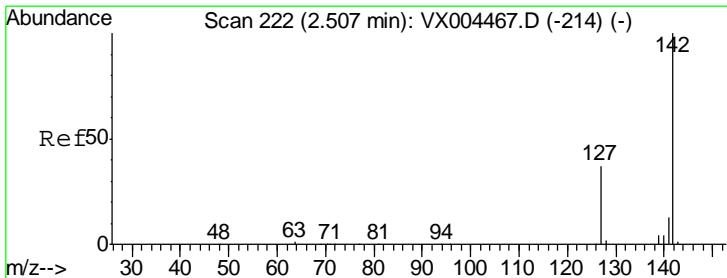
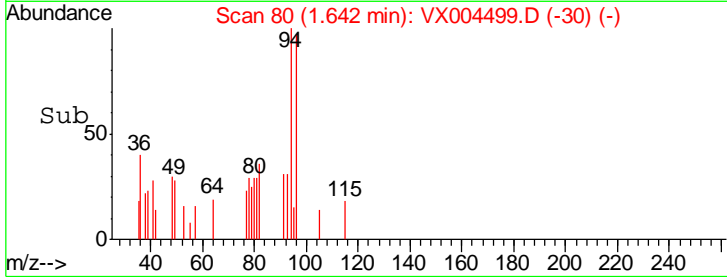
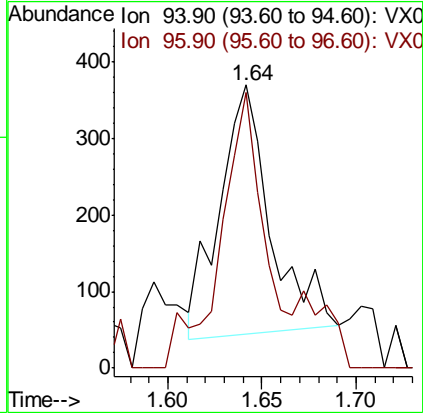
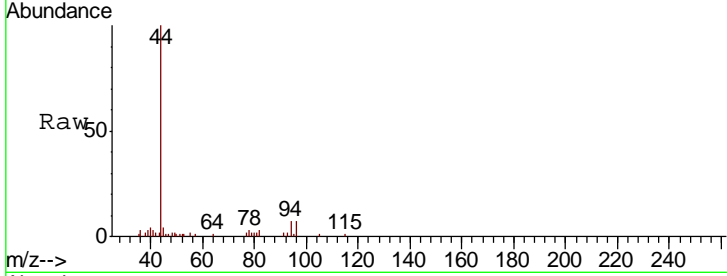




#5
 Bromomethane
 Concen: Below Cal
 RT: 1.64 min Scan# 80
 Delta R.T. 0.01 min
 Lab File: VX004499.D
 Acq: 12 Sep 2018 17:15

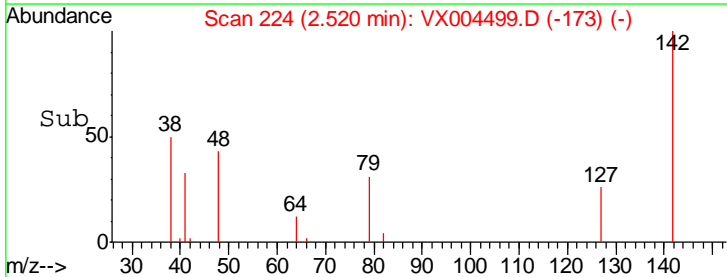
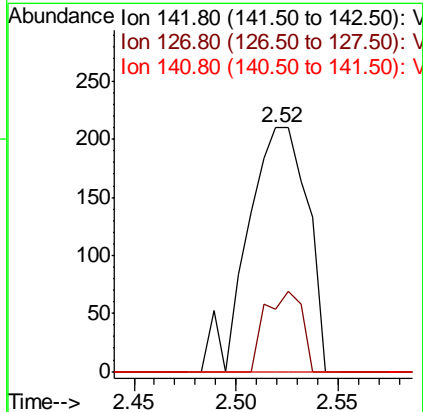
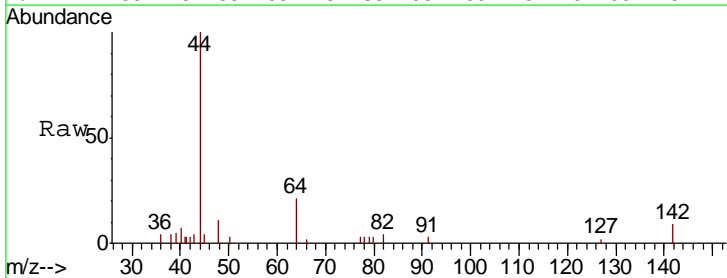
Instrument :
 MSVOA_X
 ClientSampled :
 EP1-SUT-4USTS-SB

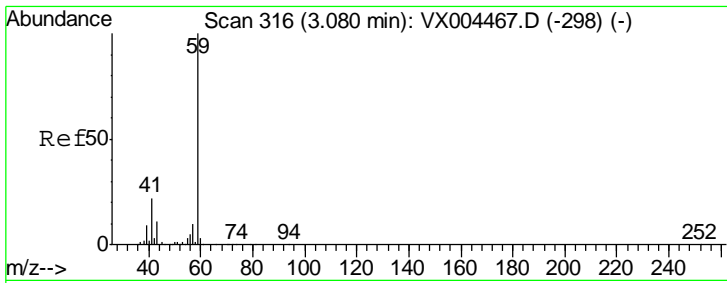
Tgt Ion: 94 Resp: 614
 Ion Ratio Lower Upper
 94 100
 96 97.8 74.5 111.7



#10
 Methyl Iodide
 Concen: 4.40 ug/l
 RT: 2.52 min Scan# 224
 Delta R.T. 0.01 min
 Lab File: VX004499.D
 Acq: 12 Sep 2018 17:15

Tgt Ion: 142 Resp: 429
 Ion Ratio Lower Upper
 142 100
 127 20.3 33.8 50.6#
 141 0.0 11.4 17.0#

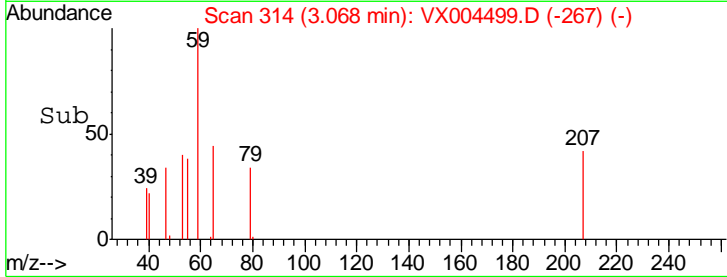
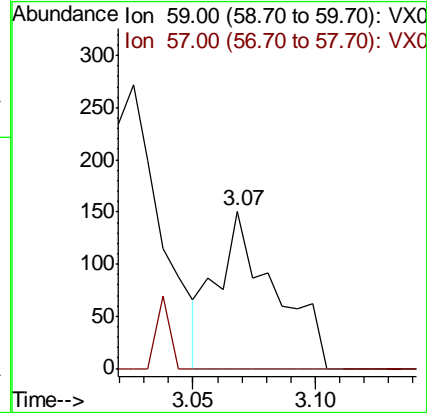
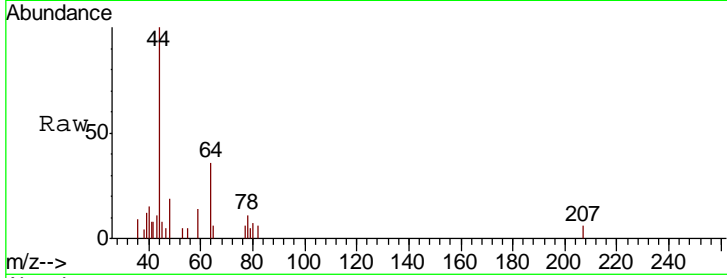




#11
 Tert butyl alcohol
 Concen: 0.39 ug/l
 RT: 3.07 min Scan# 314
 Delta R.T. -0.01 min
 Lab File: VX004499.D
 Acq: 12 Sep 2018 17:15

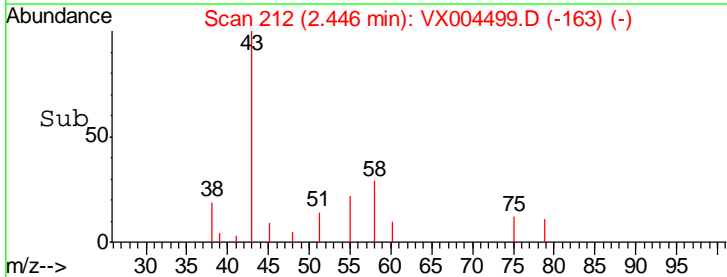
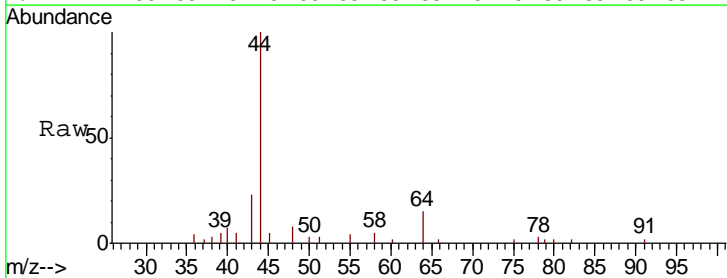
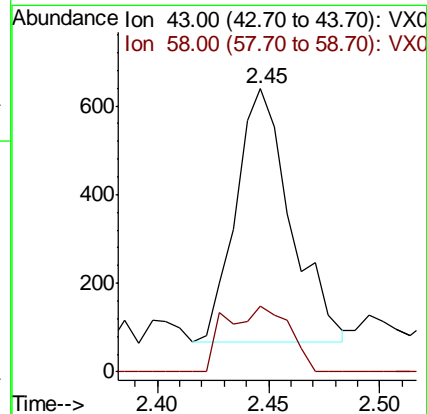
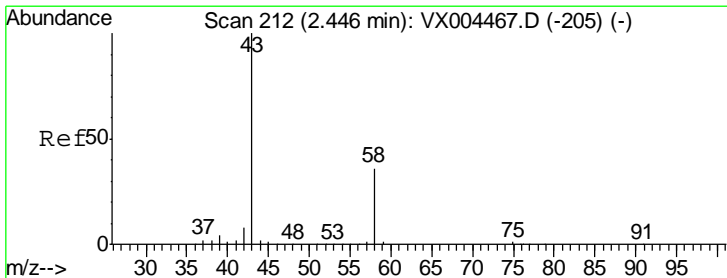
Instrument :
 MSVOA_X
 ClientSampled :
 EP1-SUT-4USTS-SB

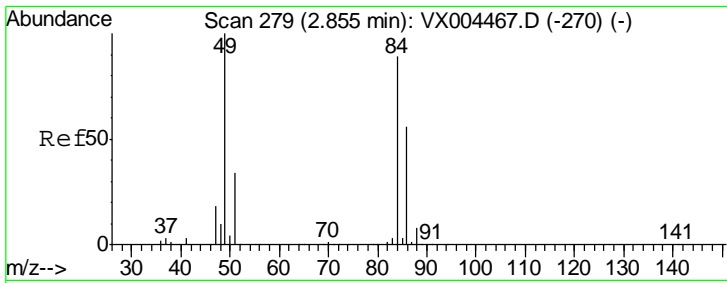
Tgt Ion: 59 Resp: 245
 Ion Ratio Lower Upper
 59 100
 57 0.0 8.2 12.4#



#16
 Acetone
 Concen: 0.75 ug/l
 RT: 2.45 min Scan# 212
 Delta R.T. 0.00 min
 Lab File: VX004499.D
 Acq: 12 Sep 2018 17:15

Tgt Ion: 43 Resp: 970
 Ion Ratio Lower Upper
 43 100
 58 26.0 26.2 39.4#

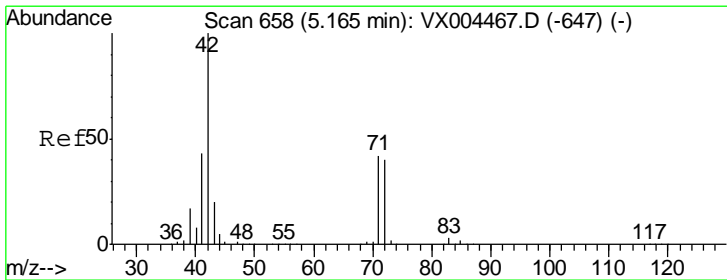
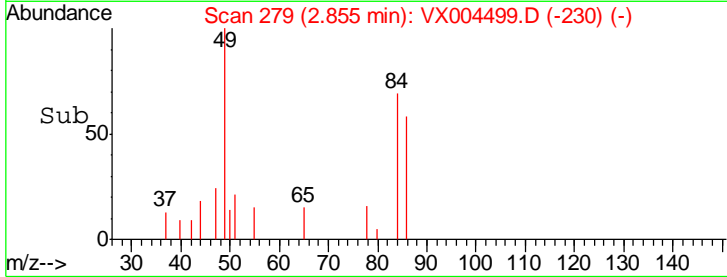
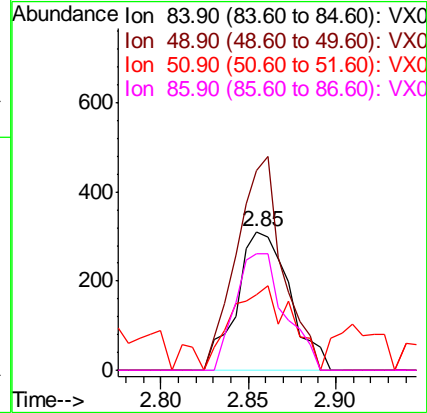
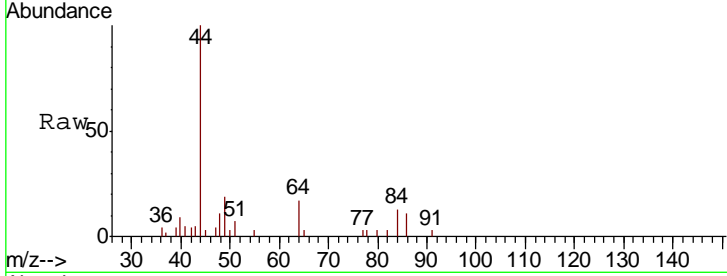




#20
 Methylene Chloride
 Concen: 0.25 ug/l
 RT: 2.85 min Scan# 279
 Delta R.T. 0.00 min
 Lab File: VX004499.D
 Acq: 12 Sep 2018 17:15

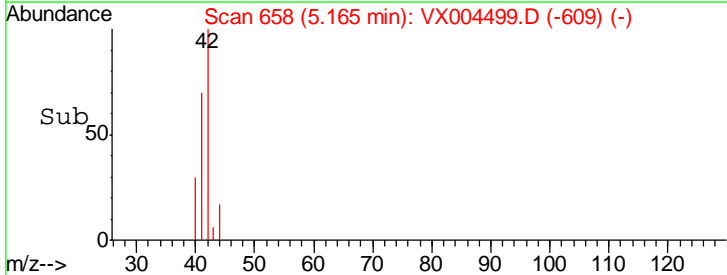
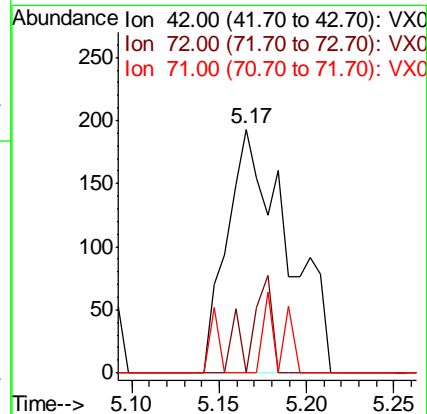
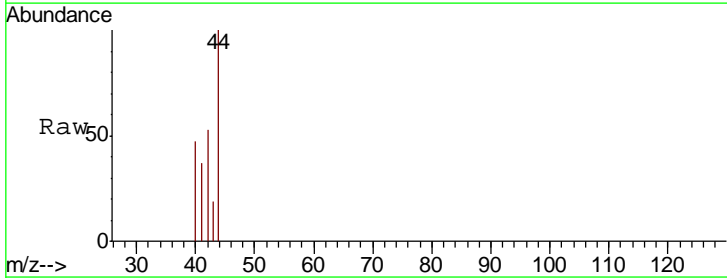
Instrument :
 MSVOA_X
 ClientSampled :
 EP1-SUT-4USTS-SB

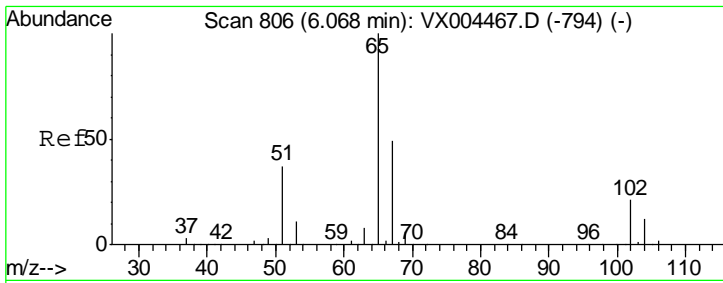
Tgt Ion	Resp	Lower	Upper
84	100		
49	144.4	101.2	151.8
51	37.9	29.5	44.3
86	83.6	52.3	78.5#



#29
 Tetrahydrofuran
 Concen: 0.37 ug/l
 RT: 5.17 min Scan# 658
 Delta R.T. 0.00 min
 Lab File: VX004499.D
 Acq: 12 Sep 2018 17:15

Tgt Ion	Resp	Lower	Upper
42	100		
72	14.3	37.4	56.0#
71	9.3	34.5	51.7#

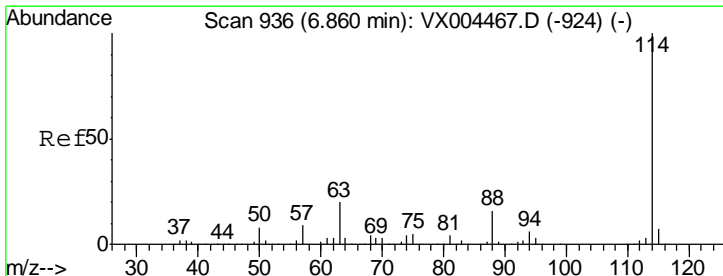
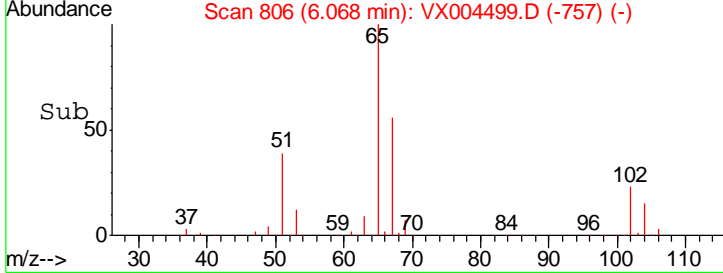
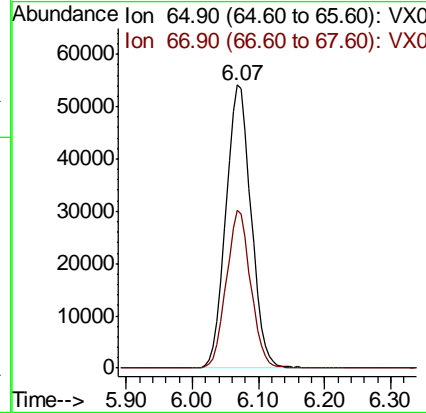
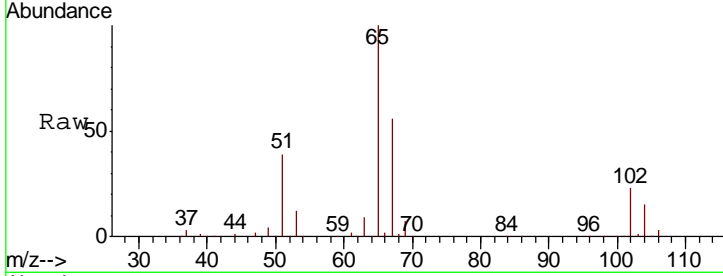




#33
 1,2-Dichloroethane-d4
 Concen: 53.81 ug/l
 RT: 6.07 min Scan# 806
 Delta R.T. 0.00 min
 Lab File: VX004499.D
 Acq: 12 Sep 2018 17:15

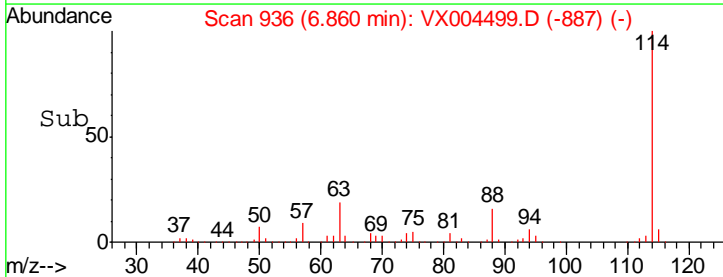
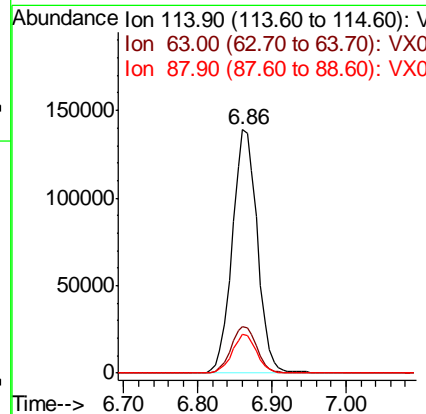
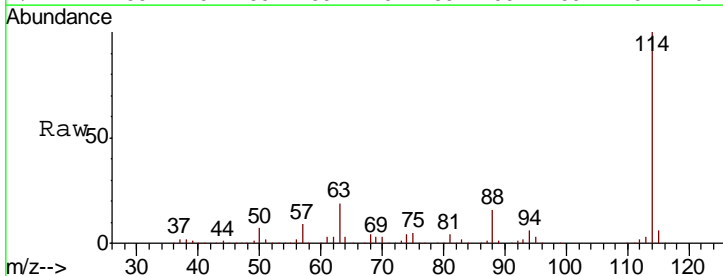
Instrument : MSVOA_X
 ClientSampleId : EP1-SUT-4USTS-SB

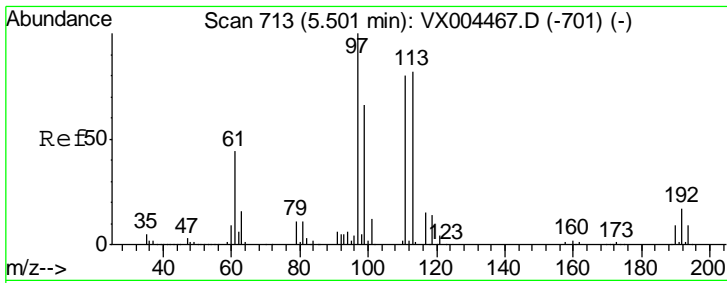
Tgt Ion	Resp	Lower	Upper
65	142997		
67	54.0	0.0	106.8



#34
 1,4-Difluorobenzene
 Concen: 50.00 ug/l
 RT: 6.86 min Scan# 936
 Delta R.T. 0.00 min
 Lab File: VX004499.D
 Acq: 12 Sep 2018 17:15

Tgt Ion	Resp	Lower	Upper
114	327889		
63	19.3	0.0	39.0
88	16.0	0.0	30.4

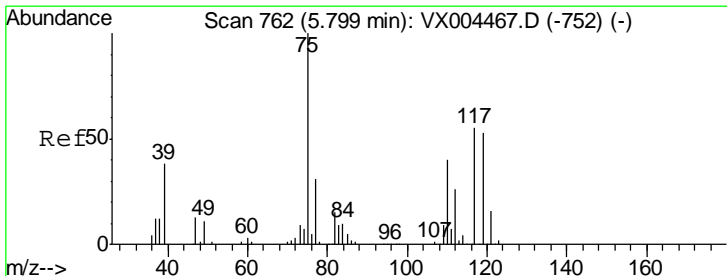
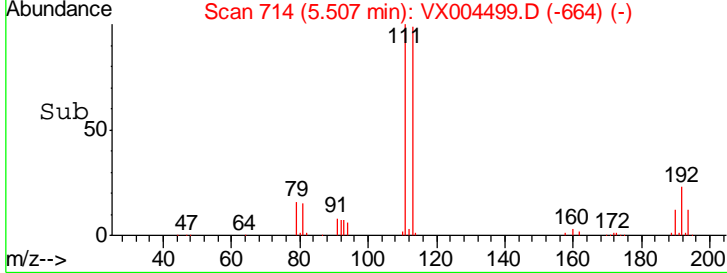
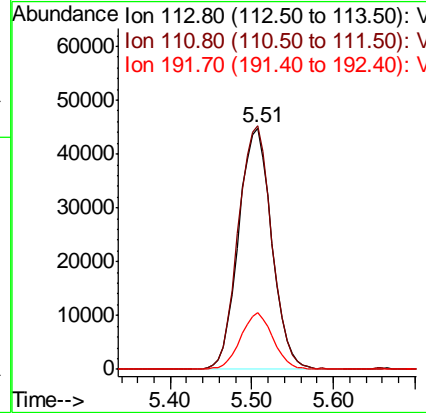
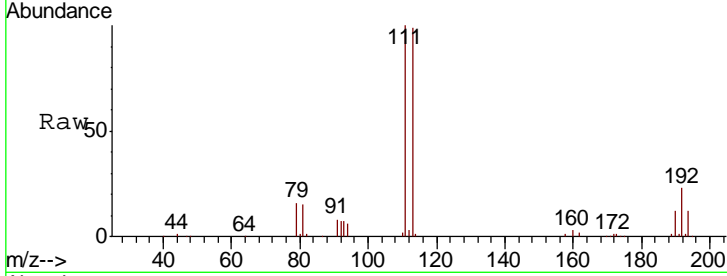




#35
 Dibromofluoromethane
 Concen: 42.05 ug/l
 RT: 5.51 min Scan# 714
 Delta R.T. 0.01 min
 Lab File: VX004499.D
 Acq: 12 Sep 2018 17:15

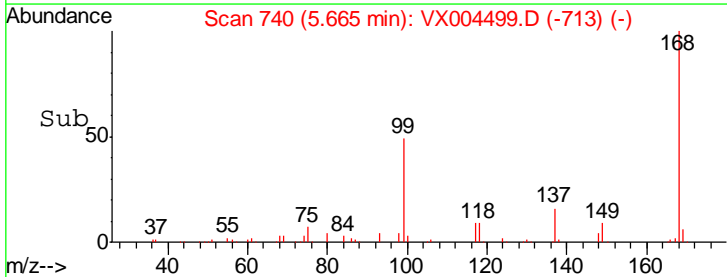
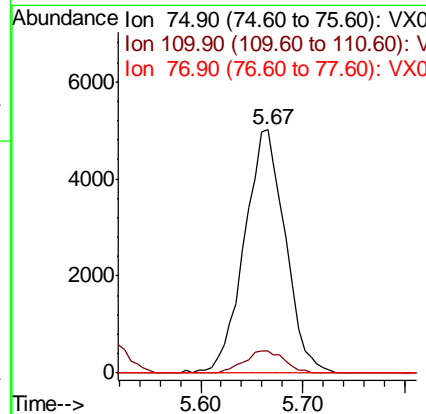
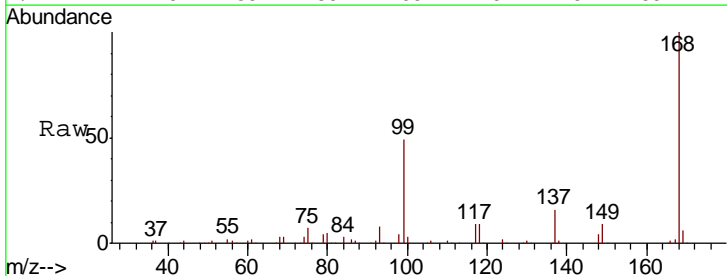
Instrument :
 MSVOA_X
ClientSampleId :
 EP1-SUT-4USTS-SB

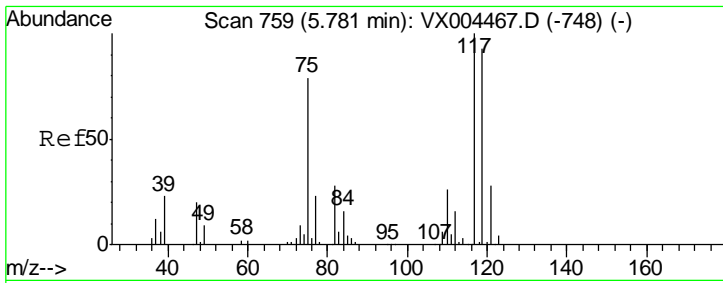
Tgt Ion	Resp	Lower	Upper
113	126164		
111	101.7	82.4	123.6
192	22.9	19.4	29.2



#36
 1,1-Dichloropropene
 Concen: 3.50 ug/l
 RT: 5.67 min Scan# 740
 Delta R.T. -0.13 min
 Lab File: VX004499.D
 Acq: 12 Sep 2018 17:15

Tgt Ion	Resp	Lower	Upper
75	13945		
110	9.0	18.0	54.0#
77	0.0	24.6	36.8#

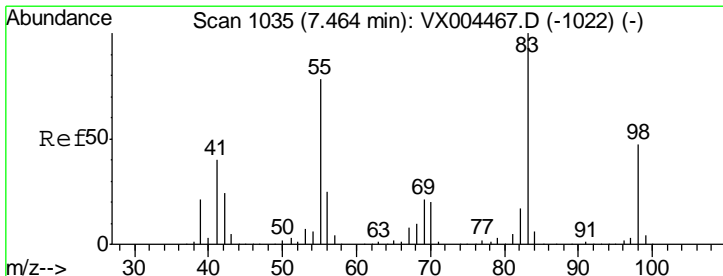
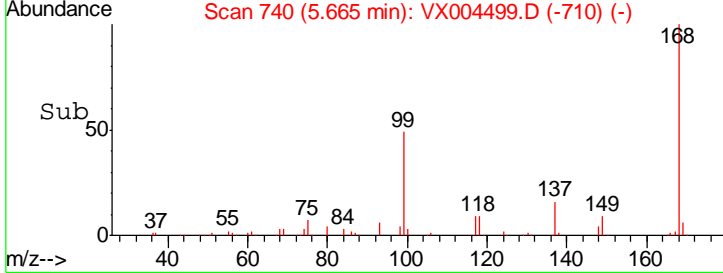
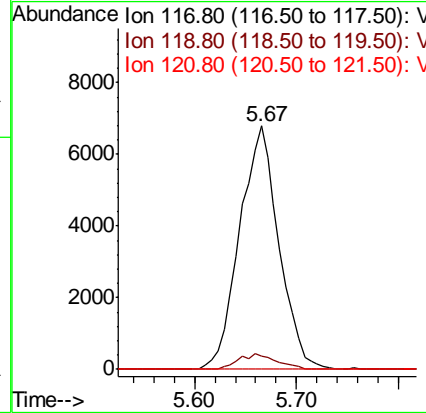
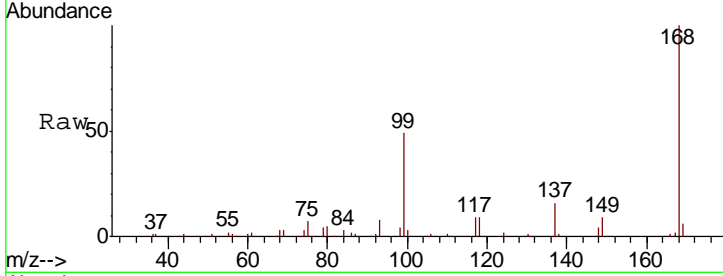




#38
 Carbon Tetrachloride
 Concen: 4.65 ug/l
 RT: 5.67 min Scan# 740
 Delta R.T. -0.12 min
 Lab File: VX004499.D
 Acq: 12 Sep 2018 17:15

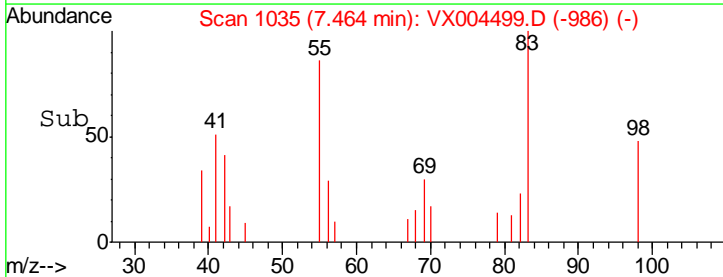
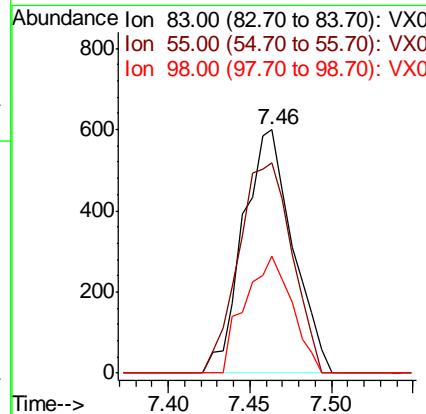
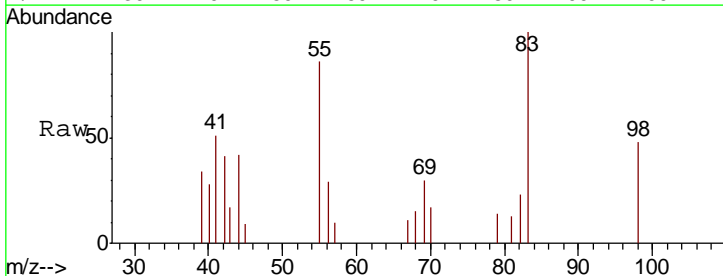
Instrument :
 MSVOA_X
ClientSampled :
 EP1-SUT-4USTS-SB

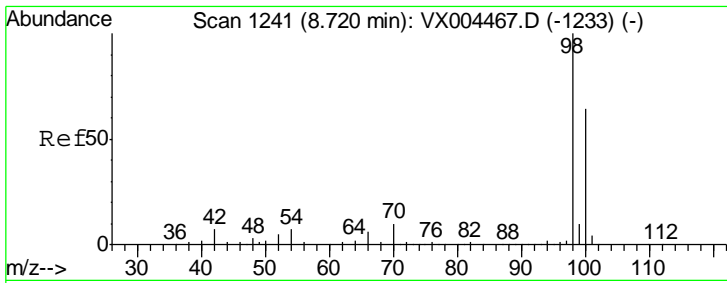
Tgt Ion	Resp	Lower	Upper
117	18087		
117	100		
119	5.2	78.8	118.2#
121	0.0	24.9	37.3#



#39
 Methylcyclohexane
 Concen: 0.31 ug/l
 RT: 7.46 min Scan# 1035
 Delta R.T. 0.00 min
 Lab File: VX004499.D
 Acq: 12 Sep 2018 17:15

Tgt Ion	Resp	Lower	Upper
83	1275		
83	100		
55	86.2	61.0	91.4
98	48.2	39.6	59.4

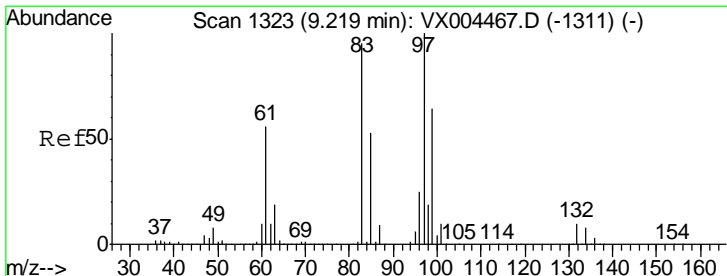
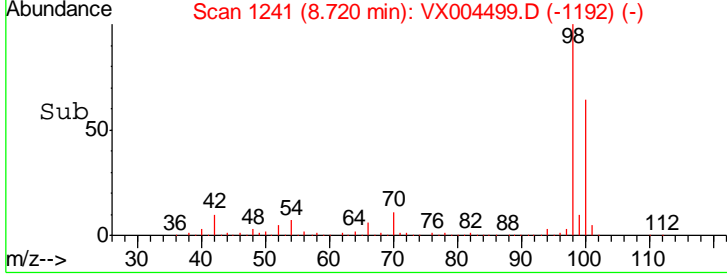
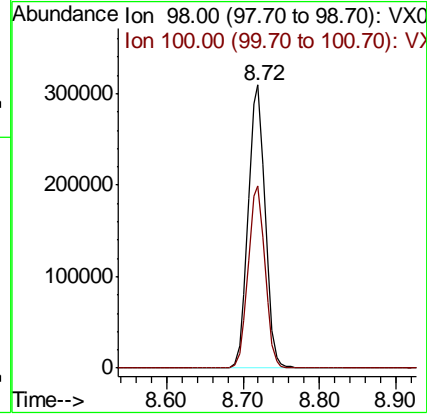
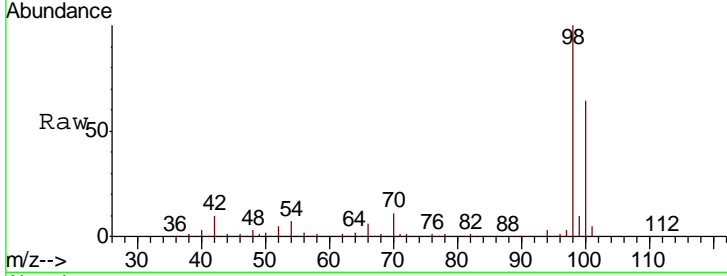




#50
 Toluene-d8
 Concen: 47.18 ug/l
 RT: 8.72 min Scan# 1241
 Delta R.T. 0.00 min
 Lab File: VX004499.D
 Acq: 12 Sep 2018 17:15

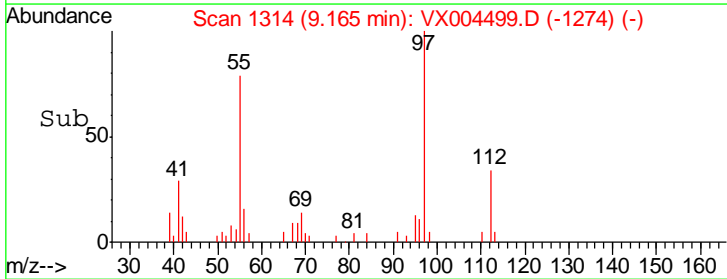
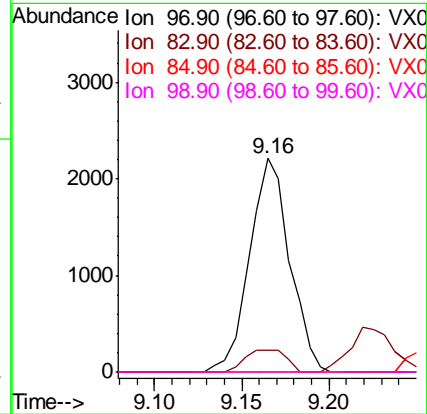
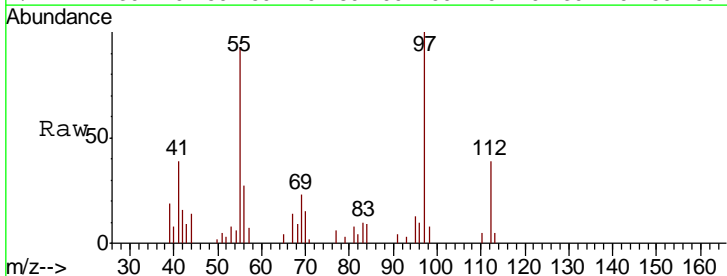
Instrument :
 MSVOA_X
ClientSampled :
 EP1-SUT-4USTS-SB

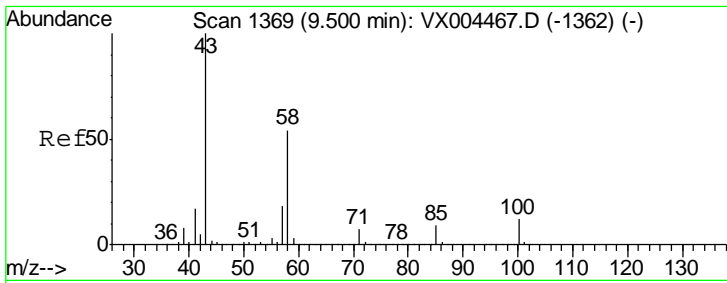
Tgt Ion: 98 Resp: 474691
 Ion Ratio Lower Upper
 98 100
 100 64.3 52.9 79.3



#55
 1,1,2-Trichloroethane
 Concen: 1.18 ug/l
 RT: 9.16 min Scan# 1314
 Delta R.T. -0.05 min
 Lab File: VX004499.D
 Acq: 12 Sep 2018 17:15

Tgt Ion: 97 Resp: 3526
 Ion Ratio Lower Upper
 97 100
 83 10.4 66.4 99.6#
 85 0.0 43.3 64.9#
 99 0.0 49.0 73.4#

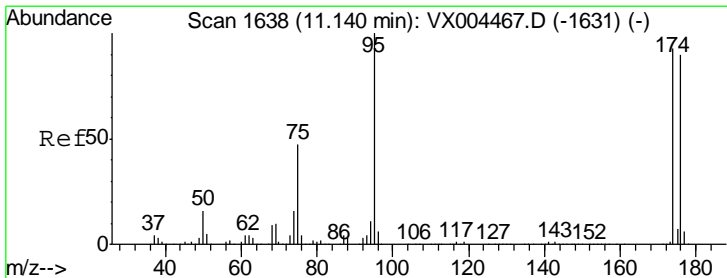
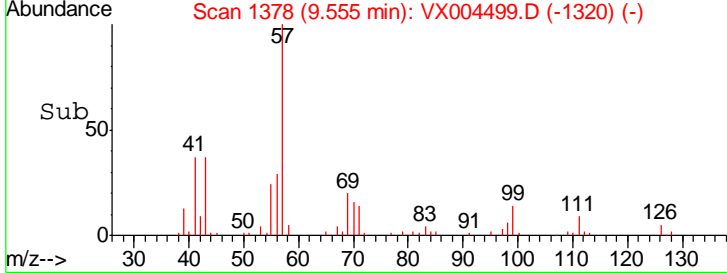
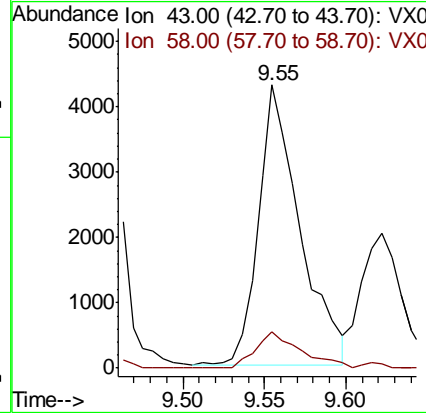
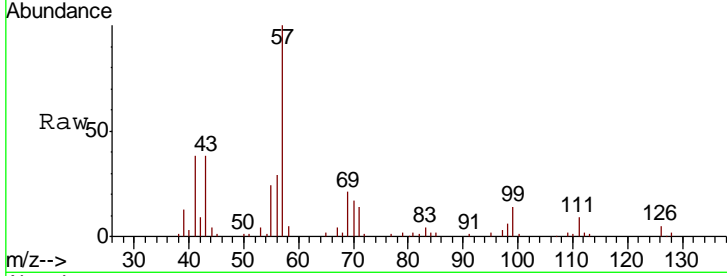




#59
 2-Hexanone
 Concen: 2.32 ug/l
 RT: 9.55 min Scan# 1378
 Delta R.T. 0.05 min
 Lab File: VX004499.D
 Acq: 12 Sep 2018 17:15

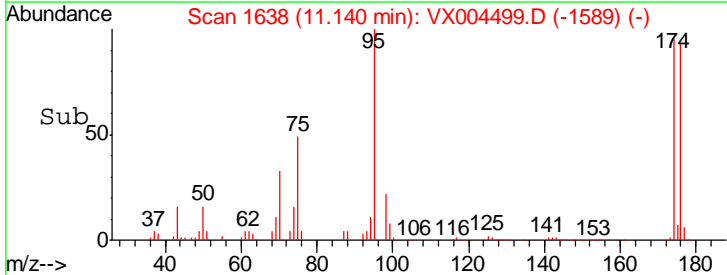
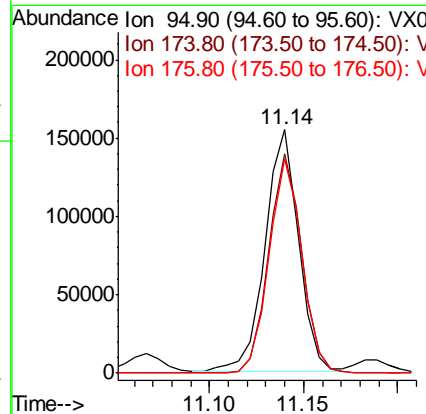
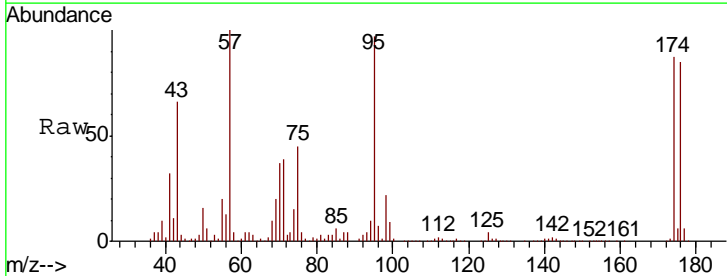
Instrument : MSVOA_X
 ClientSampled : EP1-SUT-4USTS-SB

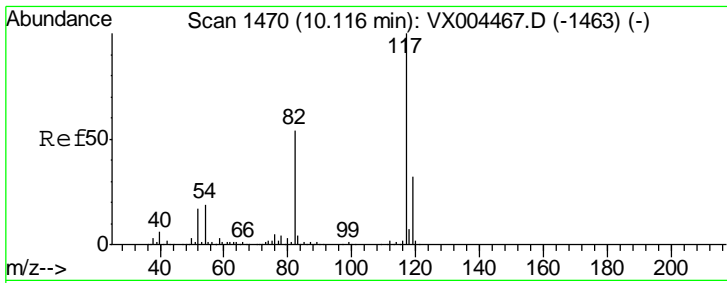
Tgt Ion	Resp	Lower	Upper
43	100		
58	14.1	29.0	87.0#



#62
 4-Bromofluorobenzene
 Concen: 53.32 ug/l
 RT: 11.14 min Scan# 1638
 Delta R.T. 0.00 min
 Lab File: VX004499.D
 Acq: 12 Sep 2018 17:15

Tgt Ion	Resp	Lower	Upper
95	100		
174	88.8	0.0	185.2
176	86.1	0.0	178.6

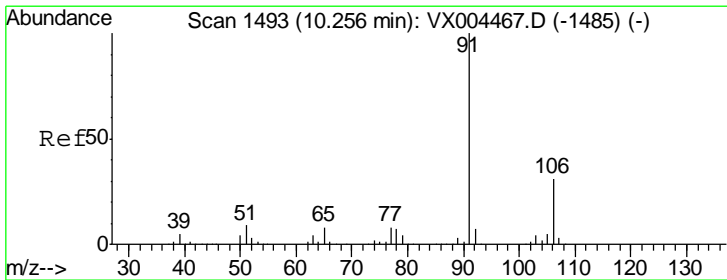
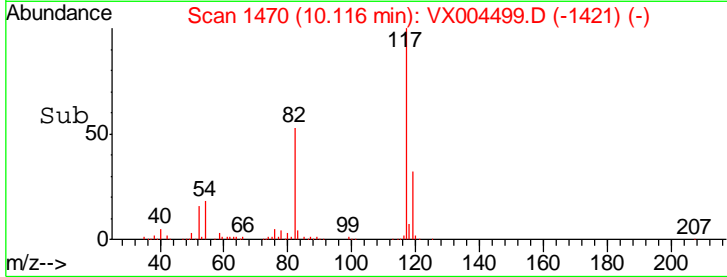
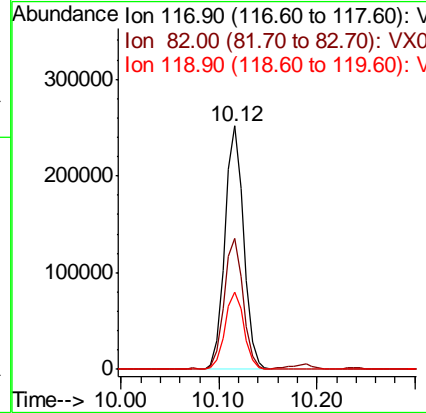
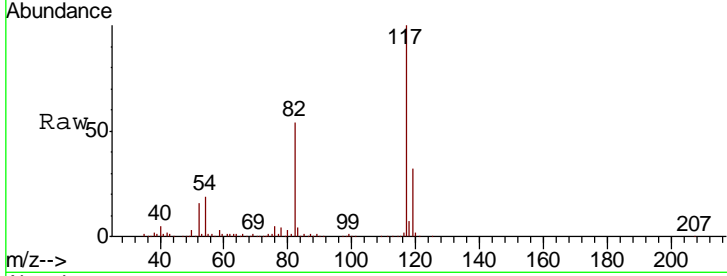




#63
 Chlorobenzene-d5
 Concen: 50.00 ug/l
 RT: 10.12 min Scan# 1470
 Delta R.T. 0.00 min
 Lab File: VX004499.D
 Acq: 12 Sep 2018 17:15

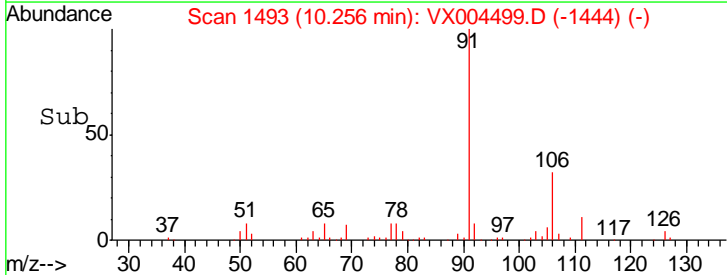
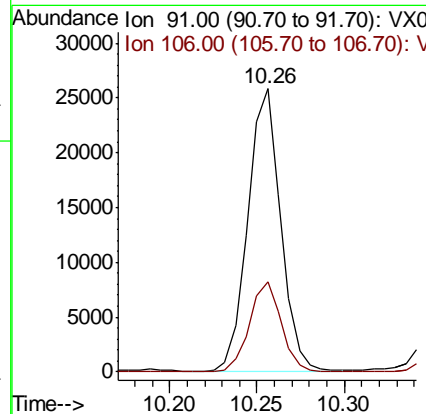
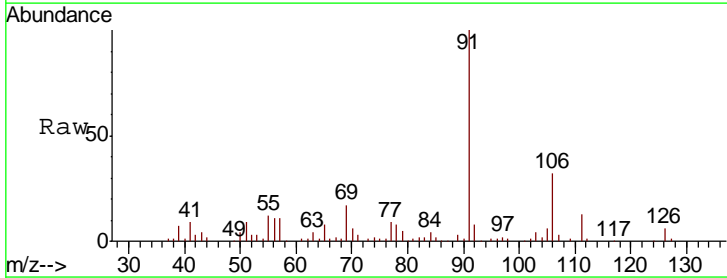
Instrument :
 MSVOA_X
 ClientSampled :
 EP1-SUT-4USTS-SB

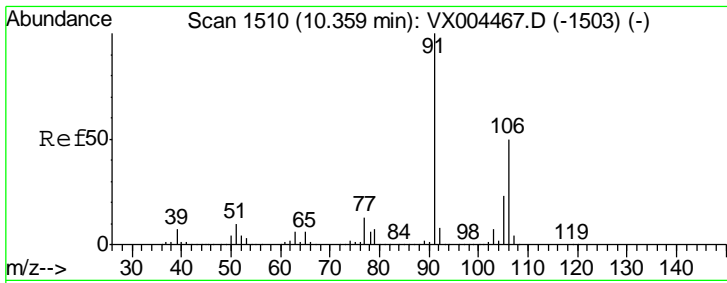
Tgt Ion	Resp	Lower	Upper
117	100		
82	53.2	47.8	71.6
119	31.7	29.3	43.9



#67
 Ethyl Benzene
 Concen: 2.50 ug/l
 RT: 10.26 min Scan# 1493
 Delta R.T. 0.00 min
 Lab File: VX004499.D
 Acq: 12 Sep 2018 17:15

Tgt Ion	Resp	Lower	Upper
91	100		
106	31.8	25.9	38.9

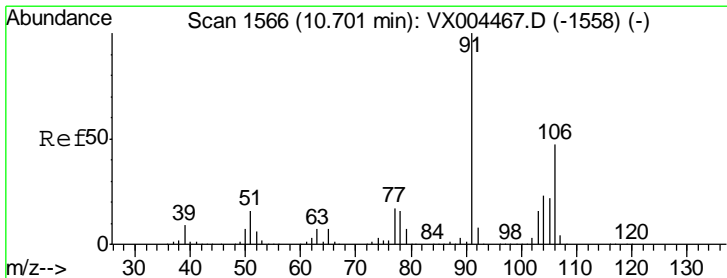
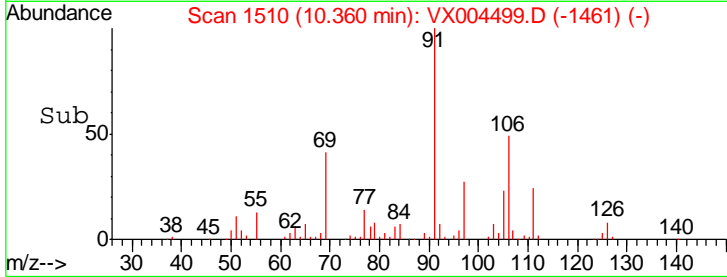
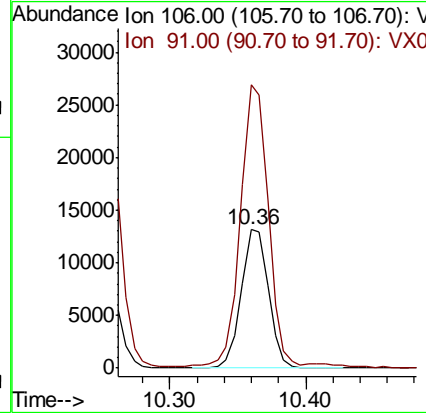
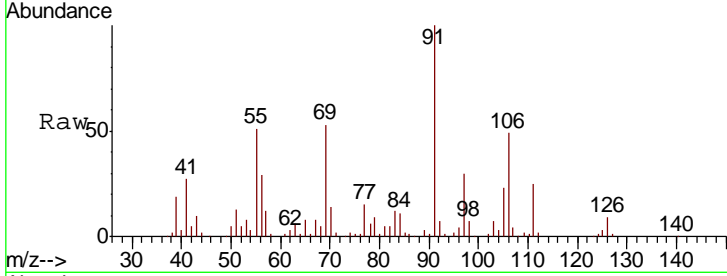




#68
 m/p-Xylenes
 Concen: 3.54 ug/l
 RT: 10.36 min Scan# 1510
 Delta R.T. 0.00 min
 Lab File: VX004499.D
 Acq: 12 Sep 2018 17:15

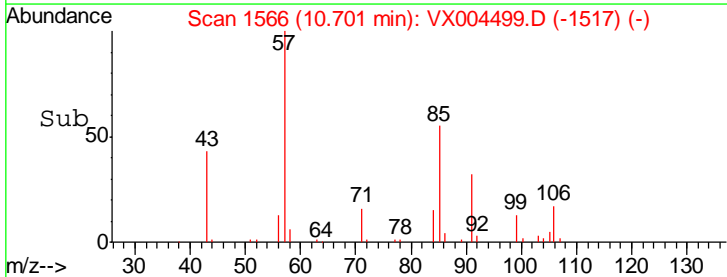
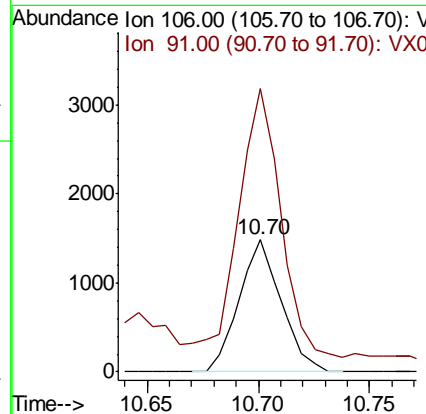
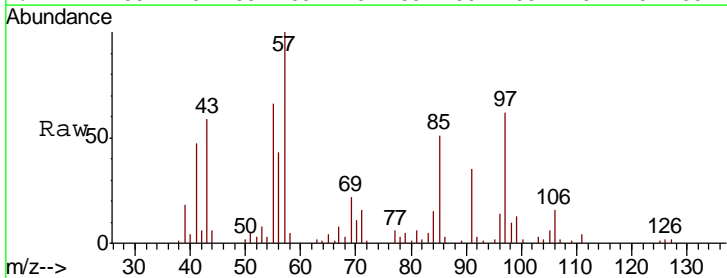
Instrument :
 MSVOA_X
 ClientSampled :
 EP1-SUT-4USTS-SB

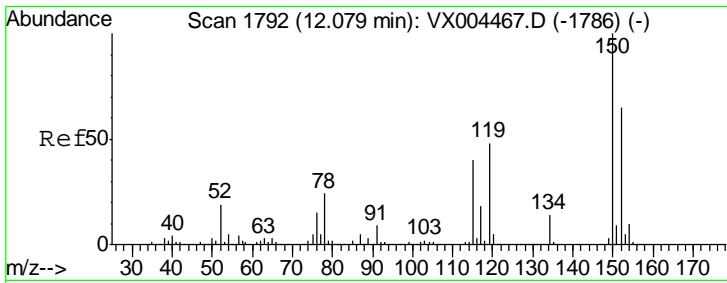
Tgt Ion:106 Resp: 18445
 Ion Ratio Lower Upper
 106 100
 91 215.9 157.1 235.7



#69
 o-Xylene
 Concen: 0.39 ug/l
 RT: 10.70 min Scan# 1566
 Delta R.T. 0.00 min
 Lab File: VX004499.D
 Acq: 12 Sep 2018 17:15

Tgt Ion:106 Resp: 1949
 Ion Ratio Lower Upper
 106 100
 91 206.6 105.1 315.1

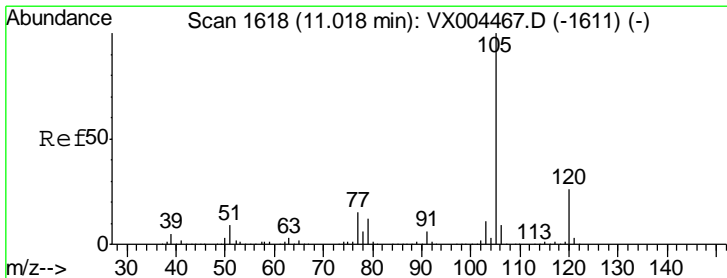
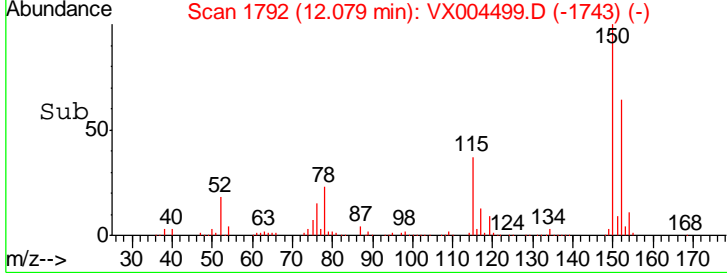
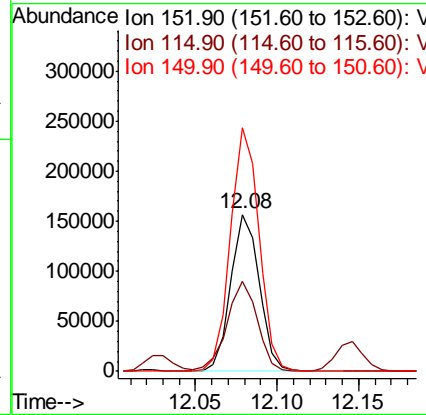
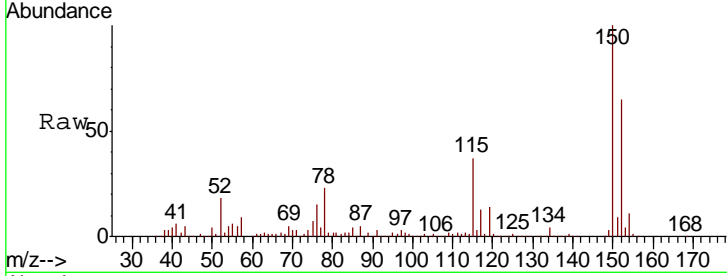




#72
 1,4-Dichlorobenzene-d4
 Concen: 50.00 ug/l
 RT: 12.08 min Scan# 1792
 Delta R.T. 0.00 min
 Lab File: VX004499.D
 Acq: 12 Sep 2018 17:15

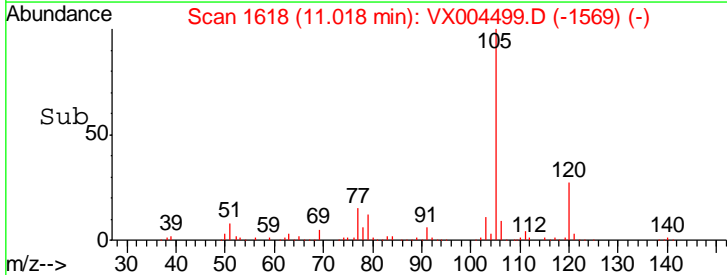
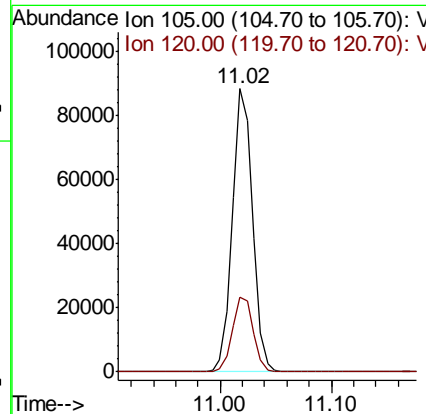
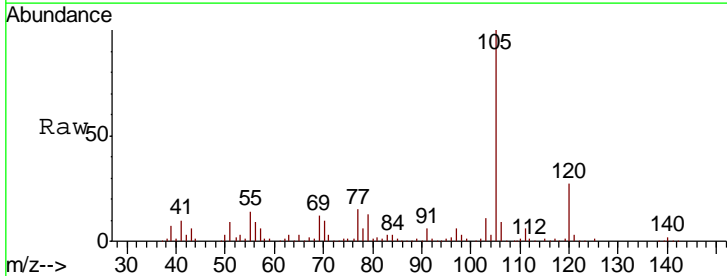
Instrument :
 MSVOA_X
 ClientSampled :
 EP1-SUT-4USTS-SB

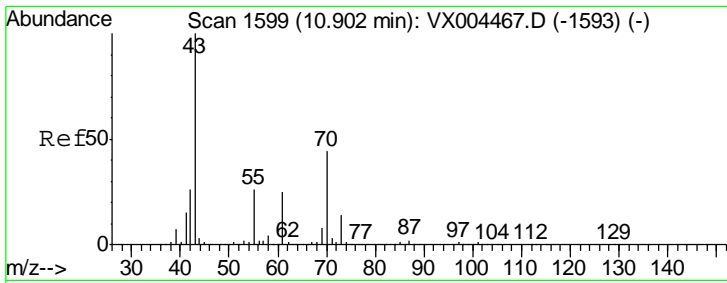
Tgt Ion	Resp	Lower	Upper
152	100		
115	60.8	39.0	117.0
150	156.2	0.0	351.0



#73
 Isopropylbenzene
 Concen: 8.89 ug/l
 RT: 11.02 min Scan# 1618
 Delta R.T. 0.00 min
 Lab File: VX004499.D
 Acq: 12 Sep 2018 17:15

Tgt Ion	Resp	Lower	Upper
105	100		
120	27.2	13.5	40.4

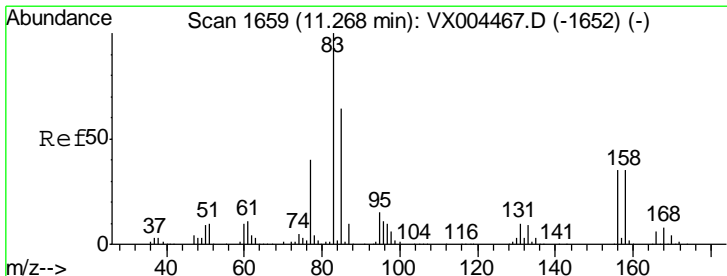
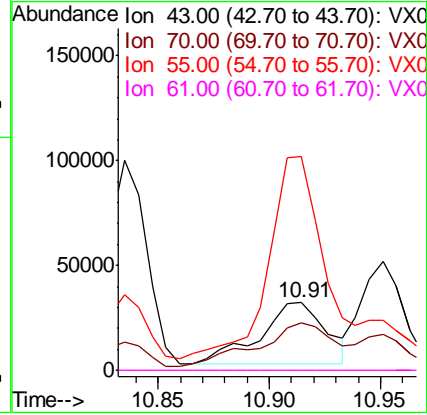
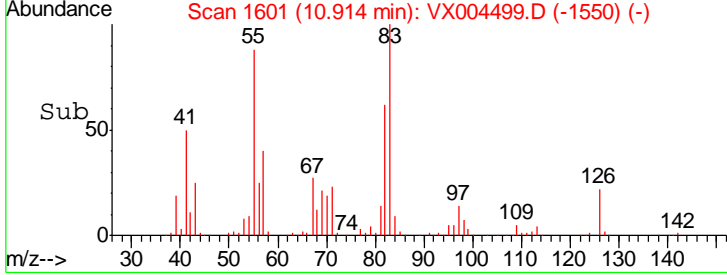
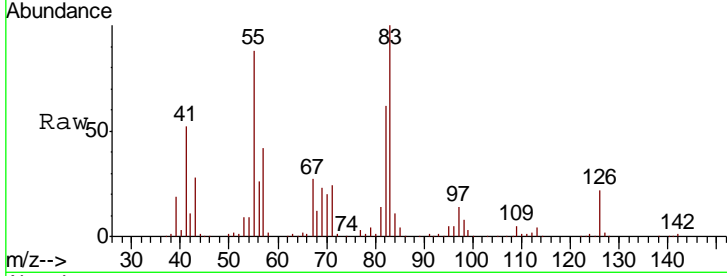




#74
 N-amyl acetate
 Concen: 11.66 ug/l
 RT: 10.91 min Scan# 1601
 Delta R.T. 0.01 min
 Lab File: VX004499.D
 Acq: 12 Sep 2018 17:15

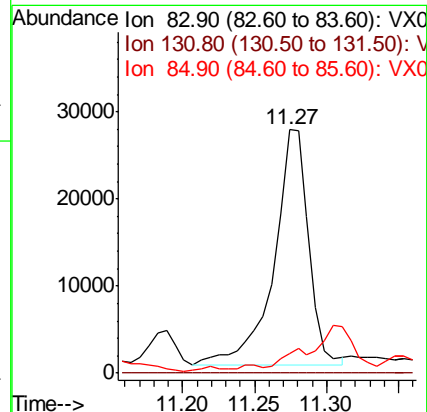
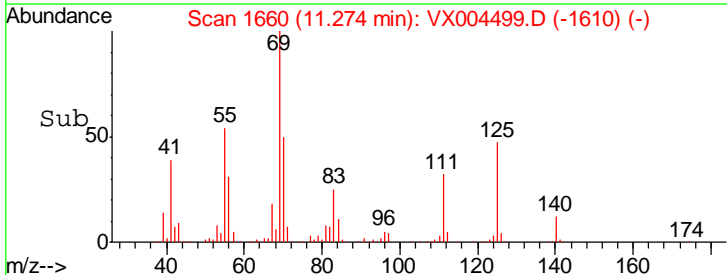
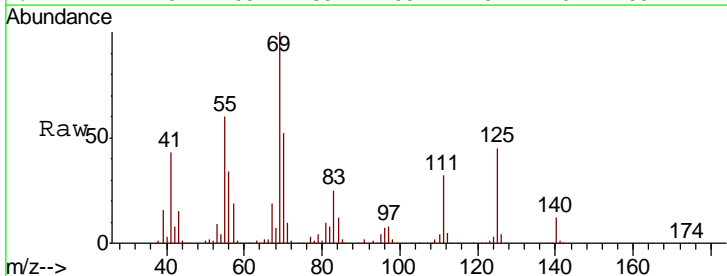
Instrument : MSVOA_X
 ClientSampled : EP1-SUT-4USTS-SB

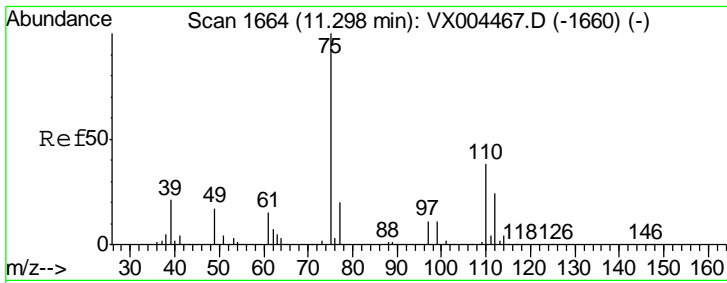
Tgt Ion	Resp	Lower	Upper
43	100		
70	83.4	37.4	56.0#
55	301.9	21.8	32.8#
61	0.0	20.6	30.8#



#75
 1,1,2,2-Tetrachloroethane
 Concen: 11.36 ug/l
 RT: 11.27 min Scan# 1660
 Delta R.T. 0.01 min
 Lab File: VX004499.D
 Acq: 12 Sep 2018 17:15

Tgt Ion	Resp	Lower	Upper
83	100		
131	0.0	5.2	15.6#
85	0.0	32.3	96.8#

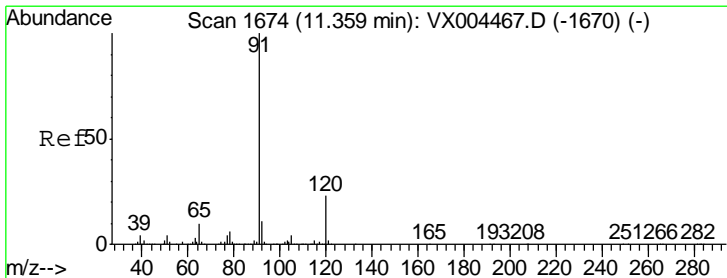
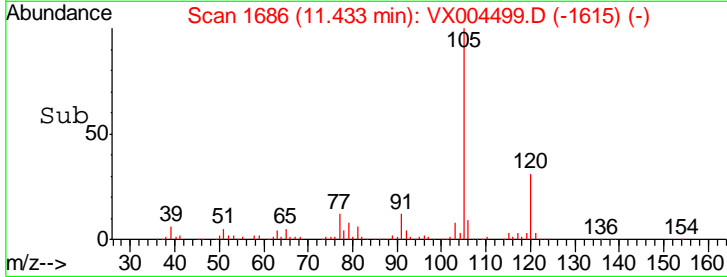
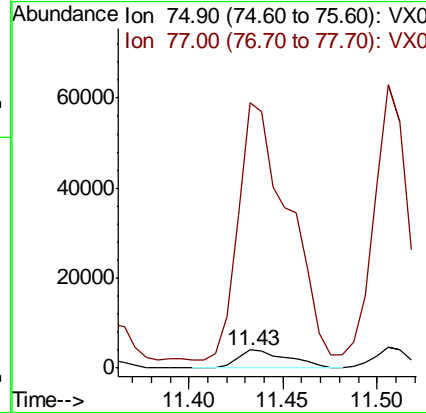
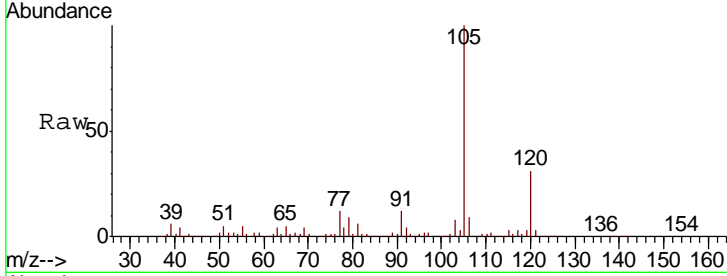




#76
 1,2,3-Trichloropropane
 Concen: 1.93 ug/l
 RT: 11.43 min Scan# 1686
 Delta R.T. 0.13 min
 Lab File: VX004499.D
 Acq: 12 Sep 2018 17:15

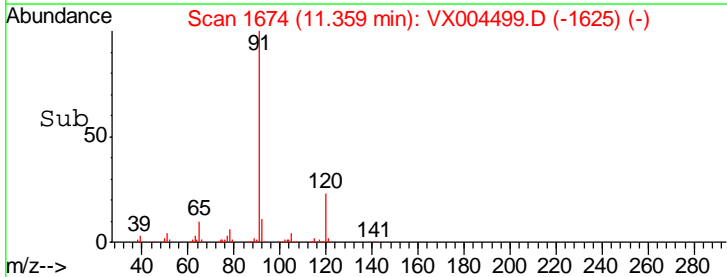
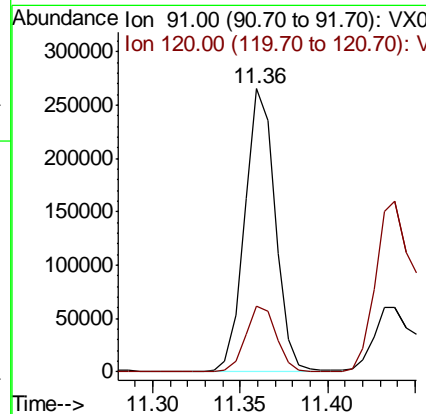
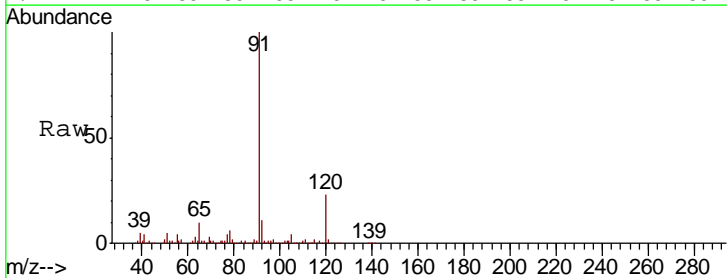
Instrument :
 MSVOA_X
 ClientSampled :
 EP1-SUT-4USTS-SB

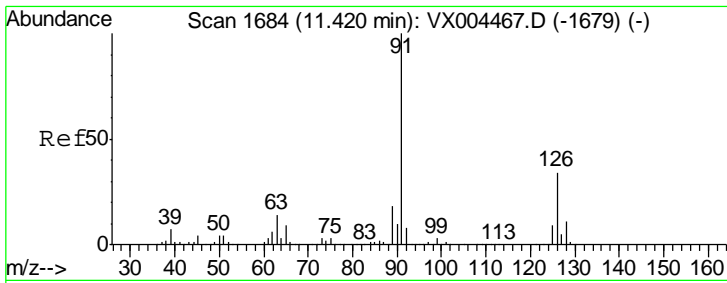
Tgt Ion: 75 Resp: 7374
 Ion Ratio Lower Upper
 75 100
 77 1492.4 20.2 60.6#



#78
 n-propylbenzene
 Concen: 22.36 ug/l
 RT: 11.36 min Scan# 1674
 Delta R.T. 0.00 min
 Lab File: VX004499.D
 Acq: 12 Sep 2018 17:15

Tgt Ion: 91 Resp: 321936
 Ion Ratio Lower Upper
 91 100
 120 23.5 11.9 35.9

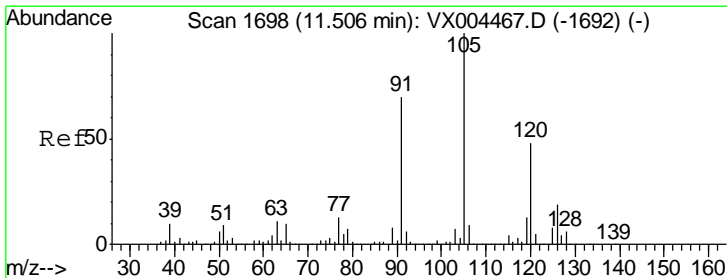
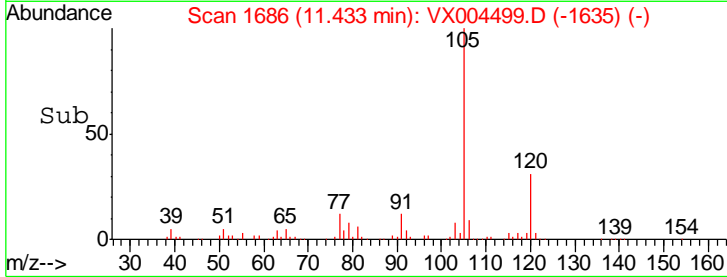
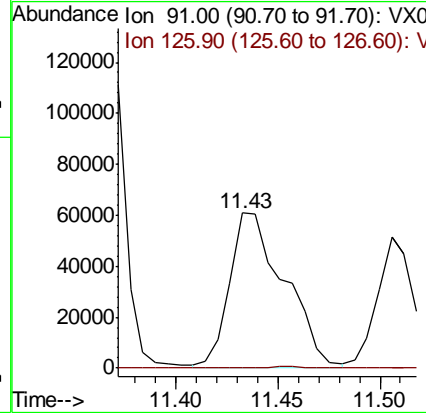
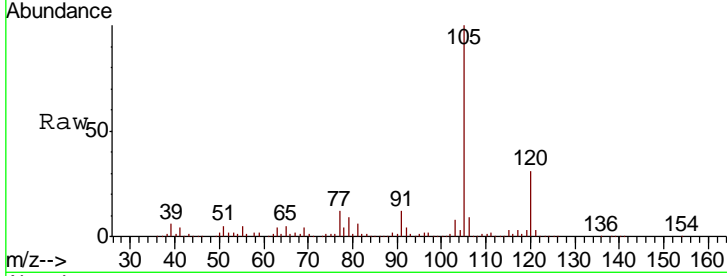




#79
 2-Chlorotoluene
 Concen: 12.89 ug/l
 RT: 11.43 min Scan# 1686
 Delta R.T. 0.01 min
 Lab File: VX004499.D
 Acq: 12 Sep 2018 17:15

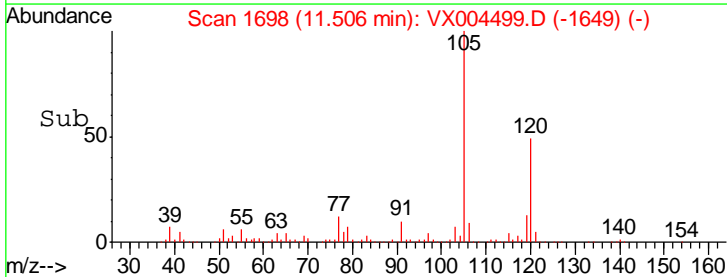
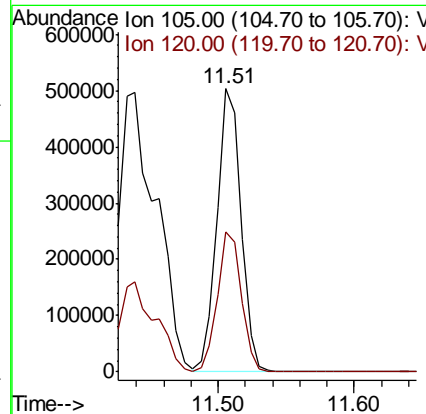
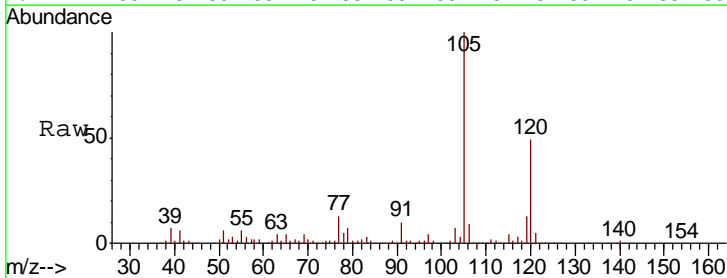
Instrument :
 MSVOA_X
 ClientSampled :
 EP1-SUT-4USTS-SB

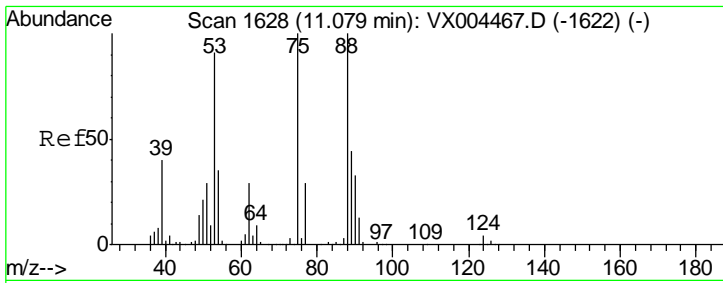
Tgt Ion: 91 Resp: 112527
 Ion Ratio Lower Upper
 91 100
 126 0.8 17.9 53.7#



#80
 1,3,5-Trimethylbenzene
 Concen: 58.65 ug/l
 RT: 11.51 min Scan# 1698
 Delta R.T. 0.00 min
 Lab File: VX004499.D
 Acq: 12 Sep 2018 17:15

Tgt Ion: 105 Resp: 617268
 Ion Ratio Lower Upper
 105 100
 120 49.4 25.6 76.8

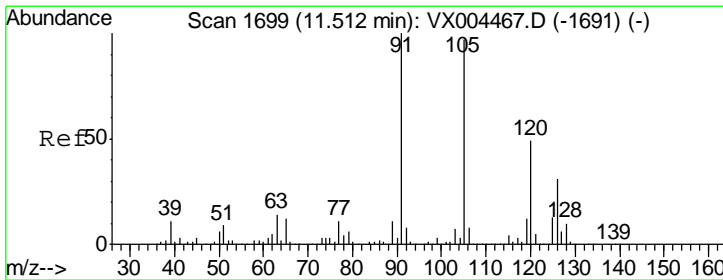
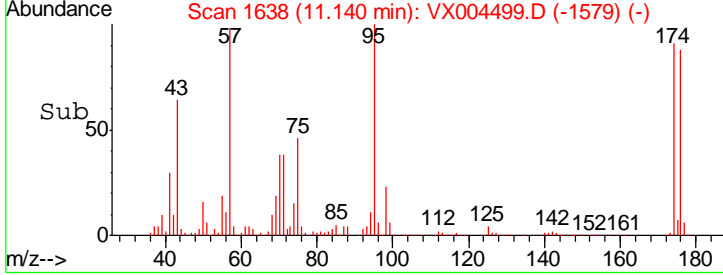
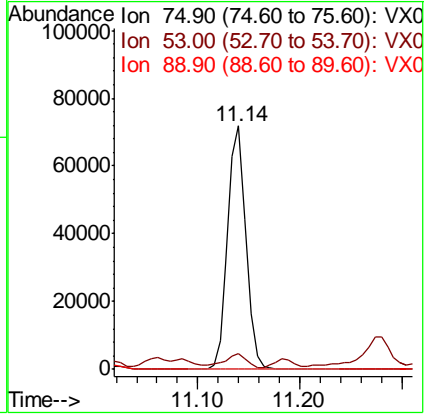
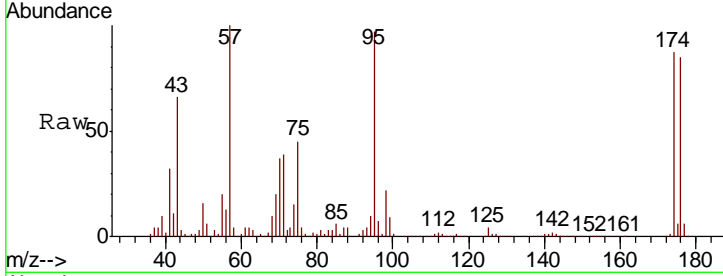




#81
 trans-1,4-Dichloro-2-butene
 Concen: 73.82 ug/l
 RT: 11.14 min Scan# 1638
 Delta R.T. 0.06 min
 Lab File: VX004499.D
 Acq: 12 Sep 2018 17:15

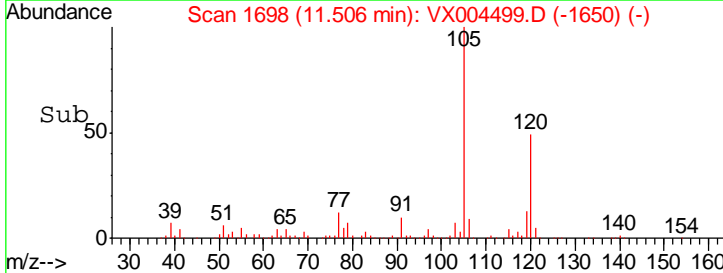
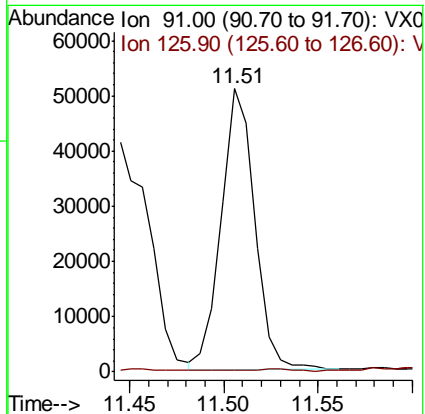
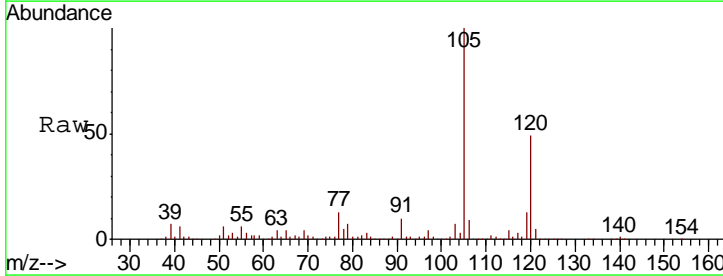
Instrument :
 MSVOA_X
 ClientSampleId :
 EP1-SUT-4USTS-SB

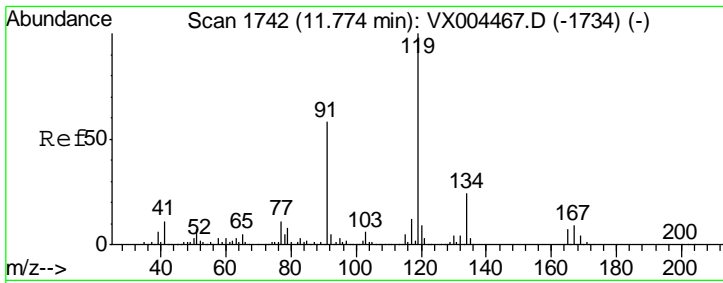
Tgt Ion	Resp	Lower	Upper
75	100		
53	6.1	80.1	120.1#
89	0.0	37.2	55.8#



#82
 4-Chlorotoluene
 Concen: 6.16 ug/l
 RT: 11.51 min Scan# 1698
 Delta R.T. -0.01 min
 Lab File: VX004499.D
 Acq: 12 Sep 2018 17:15

Tgt Ion	Resp	Lower	Upper
91	100		
126	0.8	15.5	46.5#

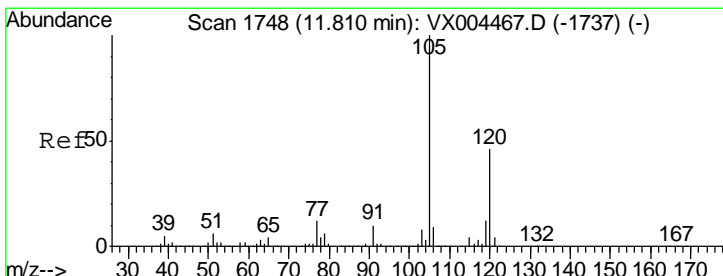
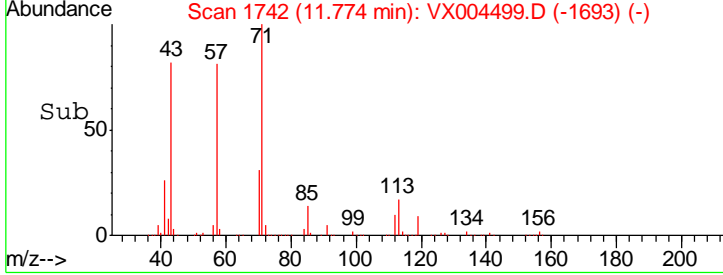
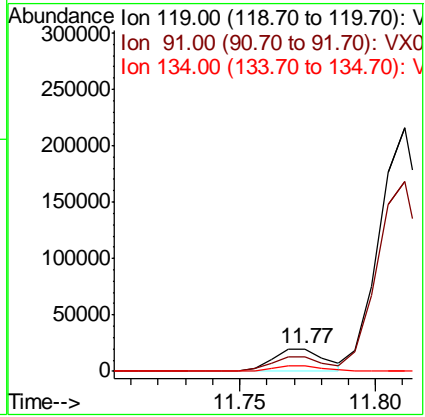
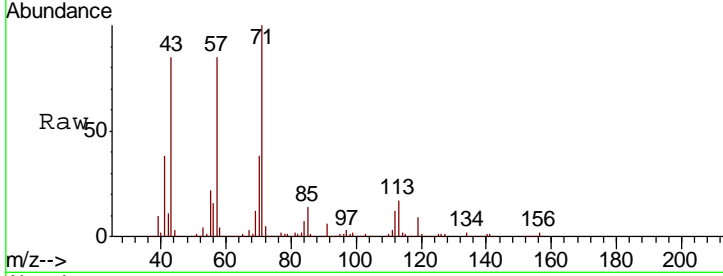




#83
 tert-Butylbenzene
 Concen: 2.65 ug/l
 RT: 11.77 min Scan# 1742
 Delta R.T. 0.00 min
 Lab File: VX004499.D
 Acq: 12 Sep 2018 17:15

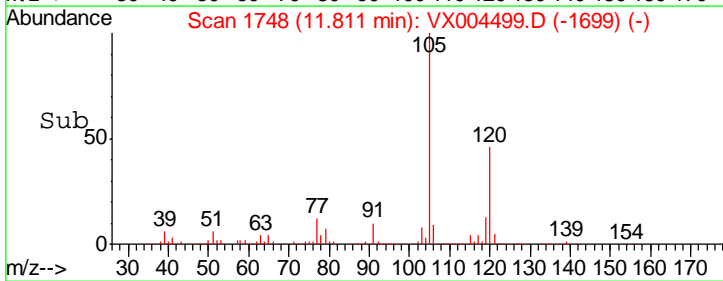
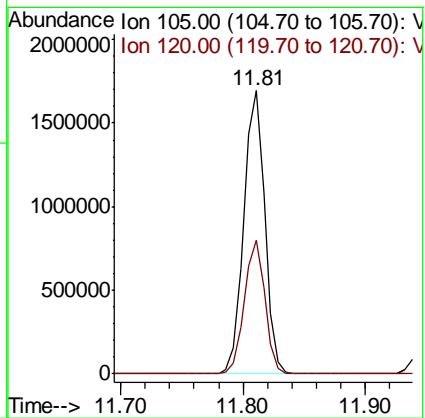
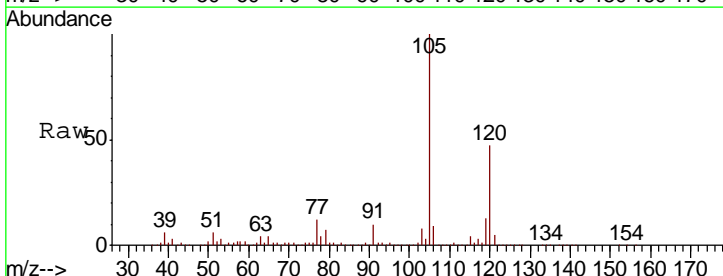
Instrument : MSVOA_X
 ClientSampleId : EP1-SUT-4USTS-SB

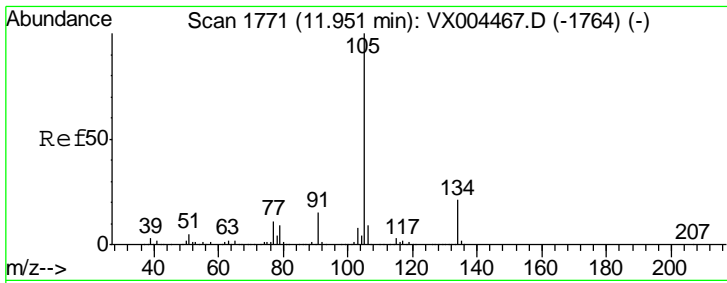
Tgt Ion	Resp	Lower	Upper
119	26504		
91	67.3	27.0	81.0
134	24.2	11.7	35.1



#84
 1,2,4-Trimethylbenzene
 Concen: 186.22 ug/l
 RT: 11.81 min Scan# 1748
 Delta R.T. 0.00 min
 Lab File: VX004499.D
 Acq: 12 Sep 2018 17:15

Tgt Ion	Resp	Lower	Upper
105	2001033		
120	46.5	23.2	69.6

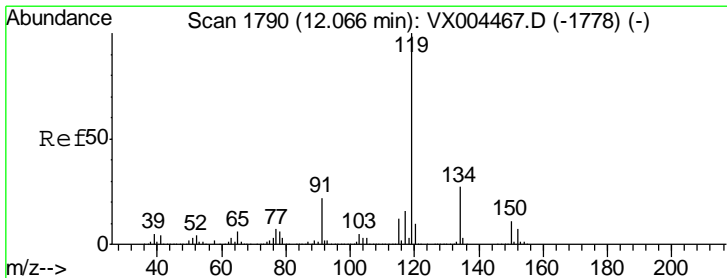
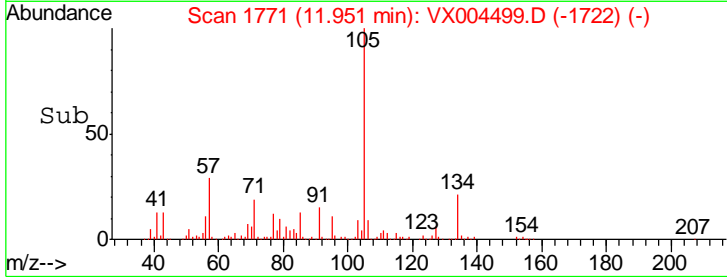
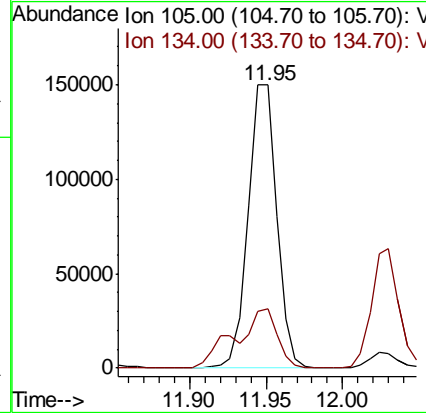
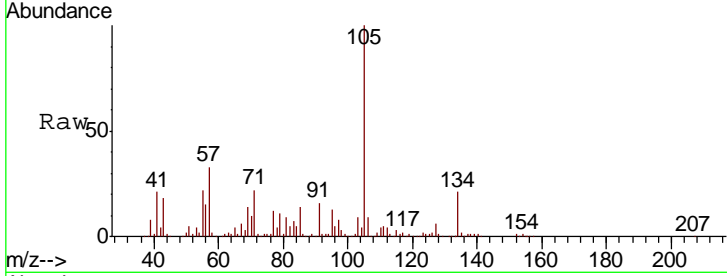




#85
 sec-Butylbenzene
 Concen: 15.18 ug/l
 RT: 11.95 min Scan# 1771
 Delta R.T. 0.00 min
 Lab File: VX004499.D
 Acq: 12 Sep 2018 17:15

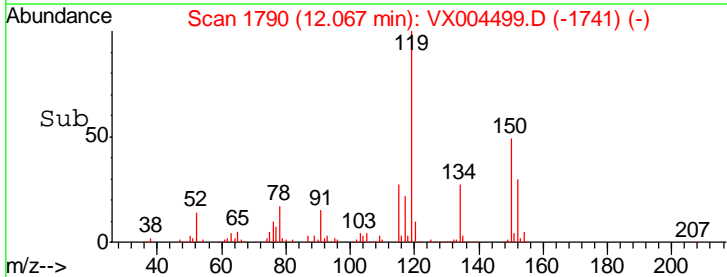
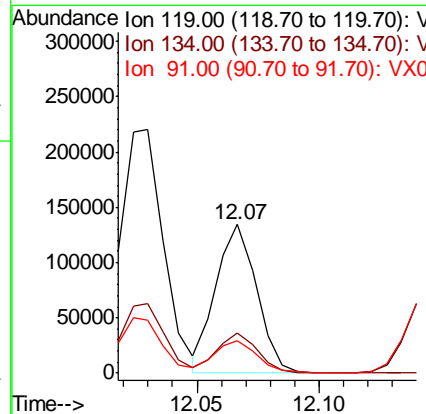
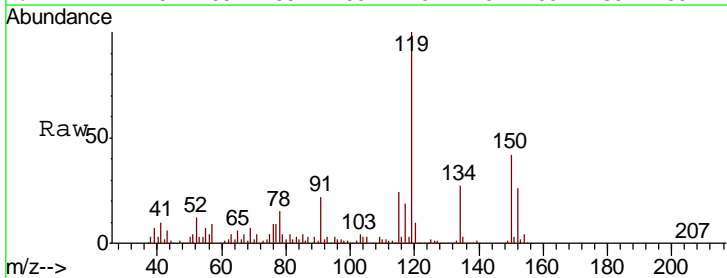
Instrument :
 MSVOA_X
 ClientSampled :
 EP1-SUT-4USTS-SB

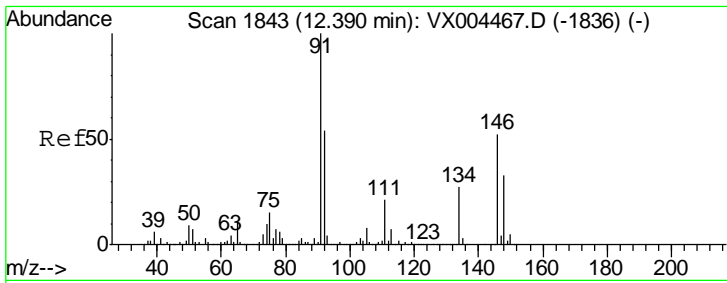
Tgt Ion	Resp	Lower	Upper
105	193765		
134	31.3	10.5	31.5



#86
 p-Isopropyltoluene
 Concen: 13.76 ug/l
 RT: 12.07 min Scan# 1790
 Delta R.T. 0.00 min
 Lab File: VX004499.D
 Acq: 12 Sep 2018 17:15

Tgt Ion	Resp	Lower	Upper
119	155184		
134	26.7	13.4	40.2
91	22.3	10.9	32.7

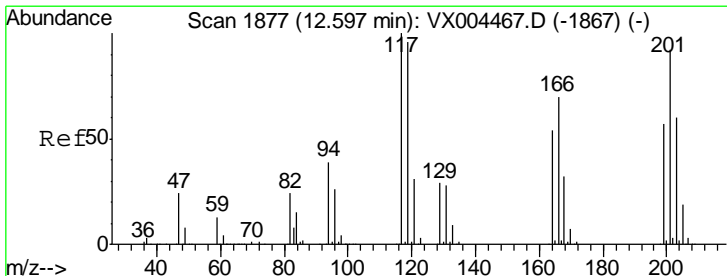
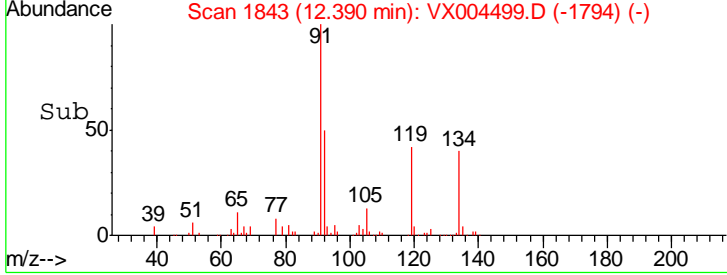
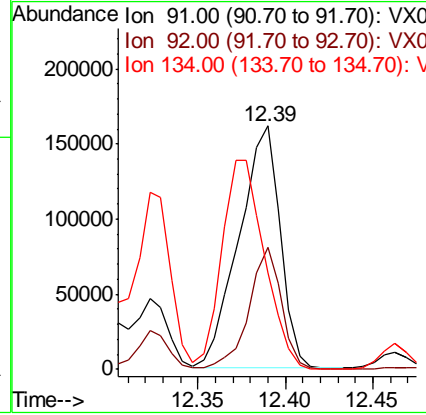
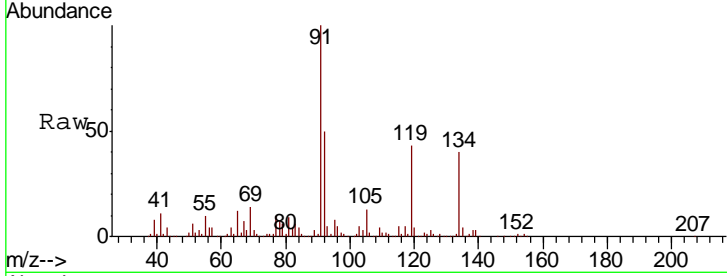




#89
 n-Butylbenzene
 Concen: 25.71 ug/l
 RT: 12.39 min Scan# 1843
 Delta R.T. 0.00 min
 Lab File: VX004499.D
 Acq: 12 Sep 2018 17:15

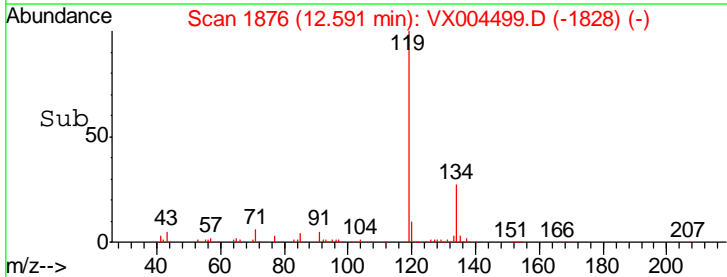
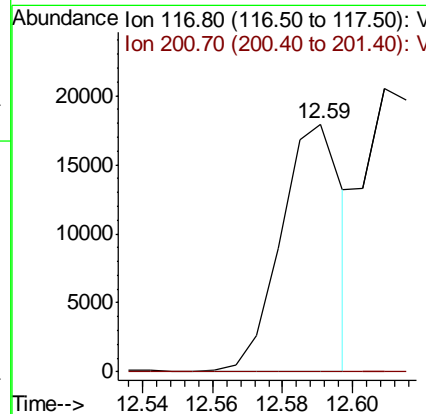
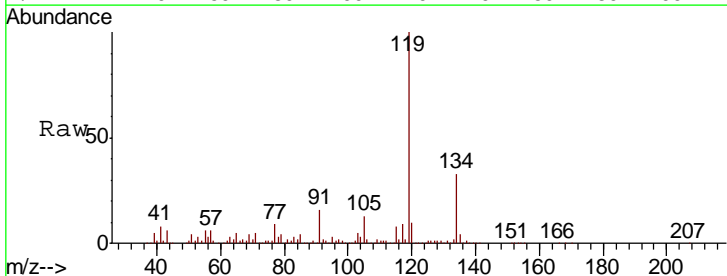
Instrument : MSVOA_X
 ClientSampled : EP1-SUT-4USTS-SB

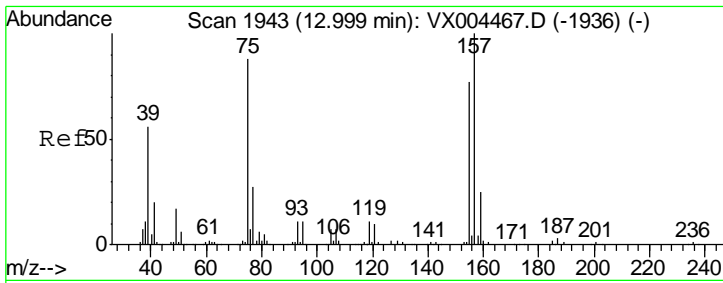
Tgt Ion	Resp	Lower	Upper
91	100		
92	39.5	27.3	81.9
134	88.9	13.6	40.7#



#90
 Hexachloroethane
 Concen: 12.07 ug/l
 RT: 12.59 min Scan# 1876
 Delta R.T. -0.01 min
 Lab File: VX004499.D
 Acq: 12 Sep 2018 17:15

Tgt Ion	Resp	Lower	Upper
117	100		
201	0.0	46.9	140.6#

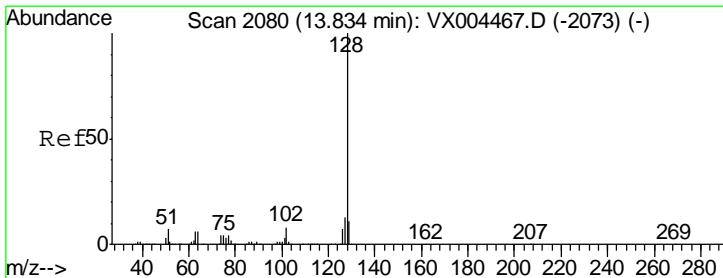
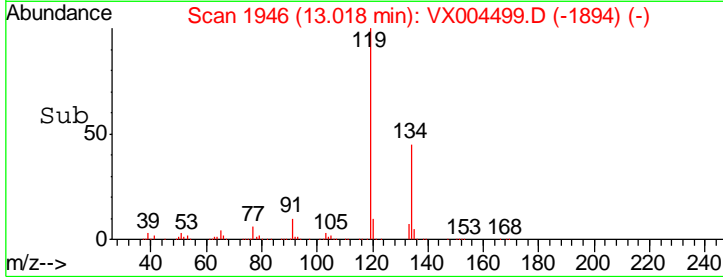
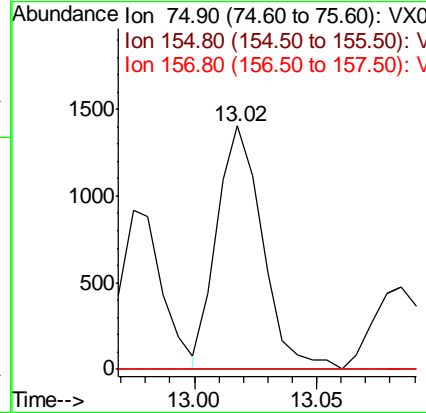
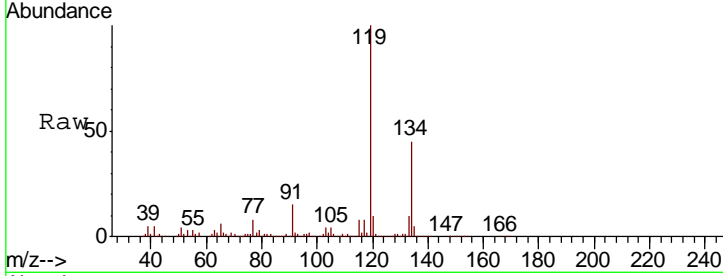




#92
 1,2-Dibromo-3-Chloropropane
 Concen: 2.11 ug/l
 RT: 13.02 min Scan# 1946
 Delta R.T. 0.02 min
 Lab File: VX004499.D
 Acq: 12 Sep 2018 17:15

Instrument :
 MSVOA_X
 ClientSampled :
 EP1-SUT-4USTS-SB

Tgt Ion	Resp	Lower	Upper
75	1820		
75	100		
155	0.0	48.0	144.2#
157	0.0	61.4	184.1#



#95
 Naphthalene
 Concen: 9.62 ug/l
 RT: 13.83 min Scan# 2080
 Delta R.T. 0.00 min
 Lab File: VX004499.D
 Acq: 12 Sep 2018 17:15

Tgt Ion	Resp	Lower	Upper
128	124902		
128	100		
127	13.2	10.2	15.2
129	11.4	8.6	12.8

