

Data Path : Z:\VOASRV\HPCHEM1\MSVOA X\DATA\VX091219\
 Data File : VX012340.D
 Acq On : 12 Sep 2019 10:50
 Operator : SY/SP
 Sample : VX0912SBL01
 Misc : 5.00µ/5.0mL/MSVOA X/SOIL
 ALS Vial : 3 Sample Multiplier: 1

Instrument :
 MSVOA_X
 ClientSampleId :

Quant Time: Sep 12 12:54:55 2019
 Quant Method : Z:\VOASRV\HPCHEM1\MSVOA_X\METHOD\82X091019S.M
 Quant Title : SW846 8260
 QLast Update : Tue Sep 10 12:55:26 2019
 Response via : Initial Calibration

Internal Standards	R.T.	QIon	Response	Conc	Units	Dev(Min)
1) Pentafluorobenzene	5.64	168	171516	50.00	µg/l	0.00
34) 1,4-Difluorobenzene	6.84	114	291336	50.00	µg/l	0.00
63) Chlorobenzene-d5	10.10	117	261772	50.00	µg/l	0.00
72) 1,4-Dichlorobenzene-d4	12.07	152	120703	50.00	µg/l	0.00

System Monitoring Compounds	R.T.	QIon	Response	Conc	Units	Dev(Min)
33) 1,2-Dichloroethane-d4	6.05	65	112783	46.51	µg/l	0.00
Spiked Amount				50.000		
Recovery					=	93.02%
35) Dibromofluoromethane	5.48	113	86883	46.52	µg/l	0.00
Spiked Amount				50.000		
Recovery					=	93.04%
50) Toluene-d8	8.71	98	347522	53.05	µg/l	0.00
Spiked Amount				50.000		
Recovery					=	106.10%
62) 4-Bromofluorobenzene	11.13	95	136185	44.85	µg/l	0.00
Spiked Amount				50.000		
Recovery					=	89.70%

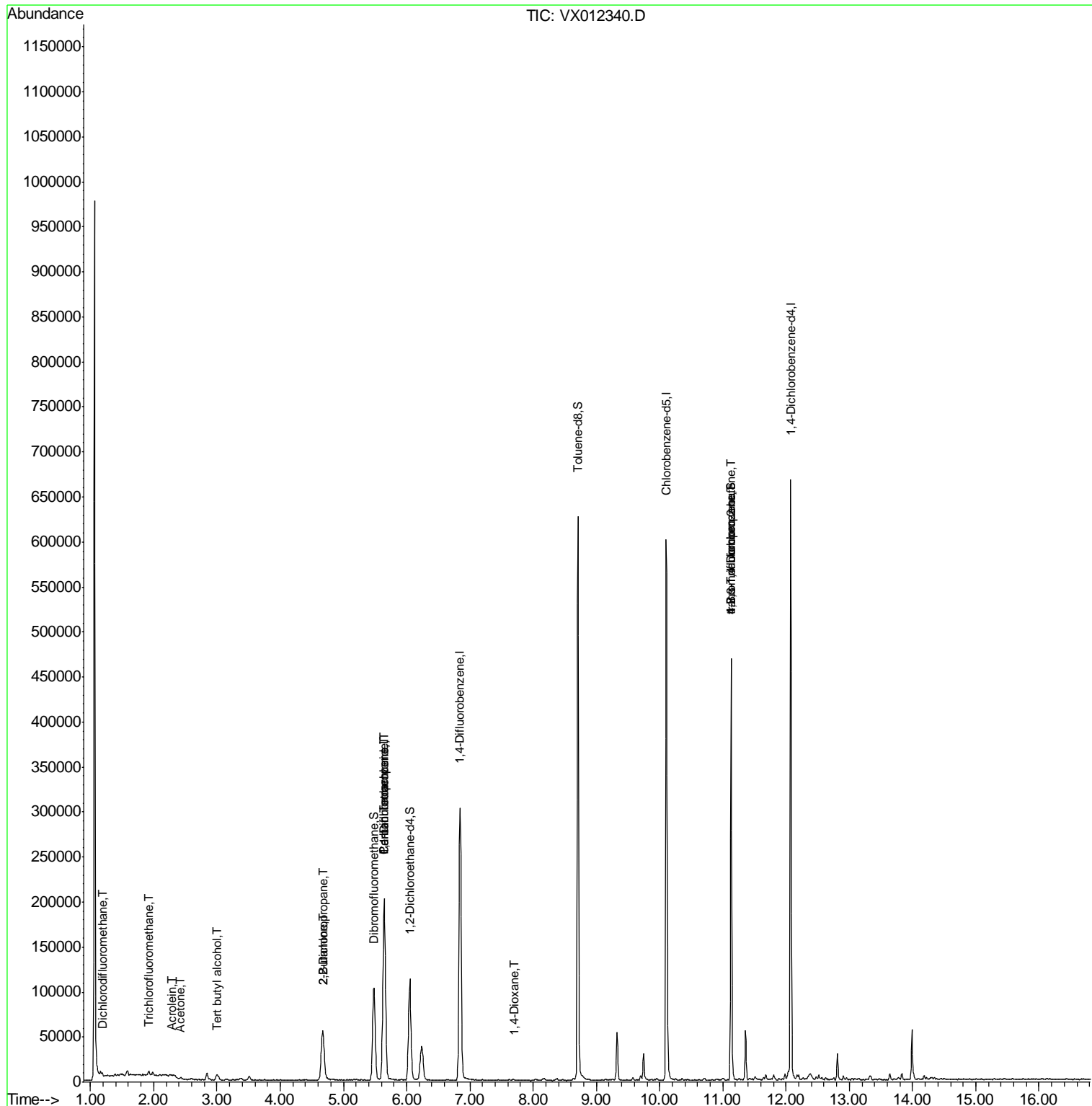
Target Compounds	R.T.	QIon	Response	Conc	Units	Qvalue
2) Dichlorodifluoromethane	1.19	85	1548	1.104	µg/l	98
5) Bromomethane	1.65	94	514	Below Cal	#	21
7) Trichlorofluoromethane	1.92	101	2627	1.158	µg/l #	74
11) Tert butyl alcohol	3.01	59	4594	8.932	µg/l #	84
13) Acrolein	2.29	56	206	1.625	µg/l #	73
16) Acetone	2.42	43	2626	4.575	µg/l	95
20) Methylene Chloride	2.84	84	3298	Below Cal		92
25) 2-Butanone	4.67	43	3549	4.836	µg/l #	83
26) 2,2-Dichloropropane	4.67	77	4743	1.559	µg/l #	55
36) 1,1-Dichloropropene	5.64	75	14880	7.005	µg/l #	53
38) Carbon Tetrachloride	5.64	117	20107	8.067	µg/l #	14
49) 1,4-Dioxane	7.70	88	20	1.118	µg/l #	53
76) 1,2,3-Trichloropropane	11.13	75	71818	46.316	µg/l #	38
81) trans-1,4-Dichloro-2-buten	11.13	75	71818	138.773	µg/l #	5

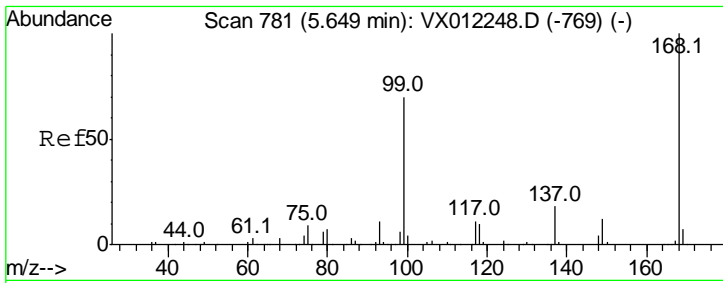
(#) = qualifier out of range (m) = manual integration (+) = signals summed

Data Path : Z:\VOASRV\HPCHEM1\MSVOA X\DATA\VX091219\
 Data File : VX012340.D
 Acq On : 12 Sep 2019 10:50
 Operator : SY/SP
 Sample : VX0912SBL01
 Misc : 5.00µ/5.0mL/MSVOA X/SOIL
 ALS Vial : 3 Sample Multiplier: 1

Instrument :
 MSVOA_X
 ClientSampleId :

Quant Time: Sep 12 12:54:55 2019
 Quant Method : Z:\VOASRV\HPCHEM1\MSVOA_X\METHOD\82X091019S.M
 Quant Title : SW846 8260
 QLast Update : Tue Sep 10 12:55:26 2019
 Response via : Initial Calibration

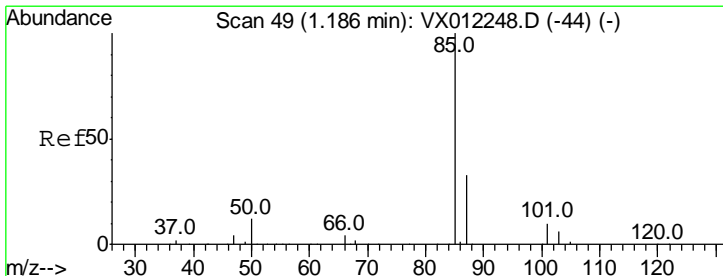
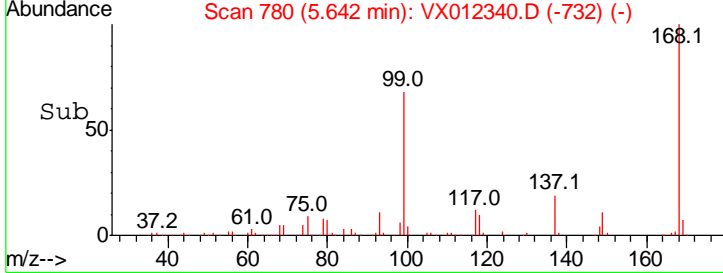
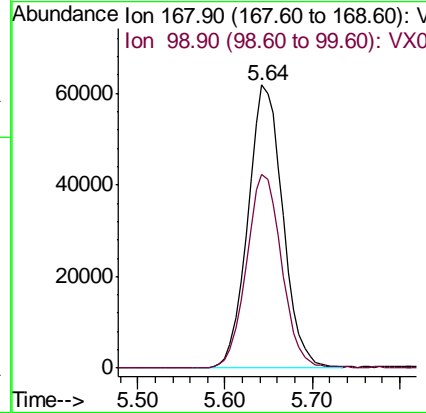
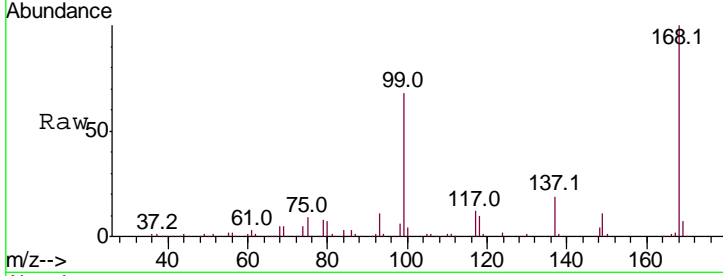




#1
 Pentafluorobenzene
 Concen: 50.000 ug/l
 RT: 5.64 min Scan# 780
 Delta R.T. -0.01 min
 Lab File: VX012340.D
 Acq: 12 Sep 2019 10:50

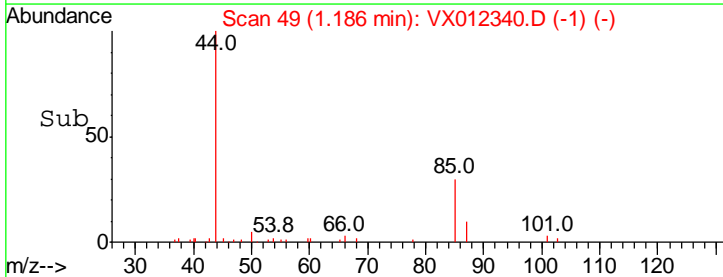
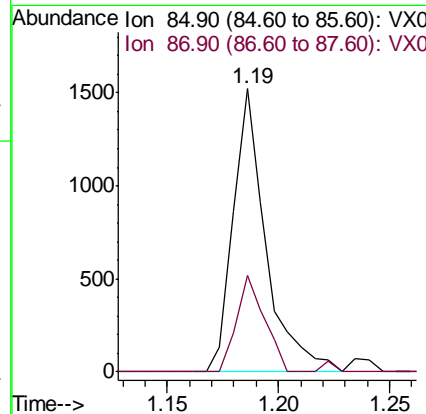
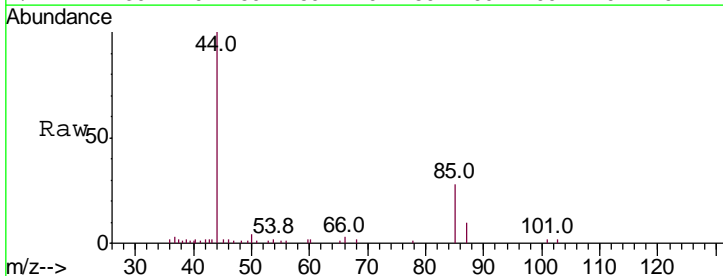
Instrument :
 MSVOA_X
 ClientSampled :

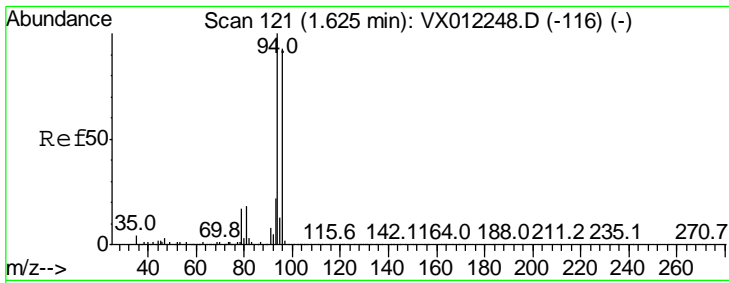
Tgt Ion: 168 Resp: 171516
 Ion Ratio Lower Upper
 168 100
 99 68.4 55.8 83.6



#2
 Dichlorodifluoromethane
 Concen: 1.104 ug/l
 RT: 1.19 min Scan# 49
 Delta R.T. -0.00 min
 Lab File: VX012340.D
 Acq: 12 Sep 2019 10:50

Tgt Ion: 85 Resp: 1548
 Ion Ratio Lower Upper
 85 100
 87 34.2 16.7 50.0

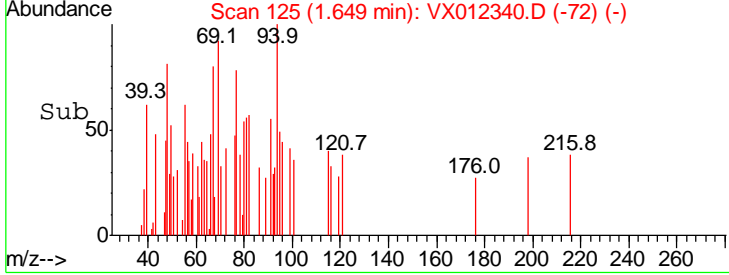
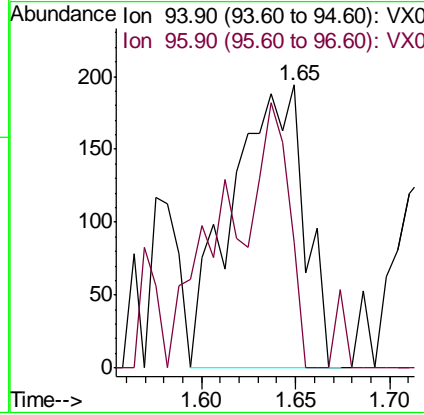
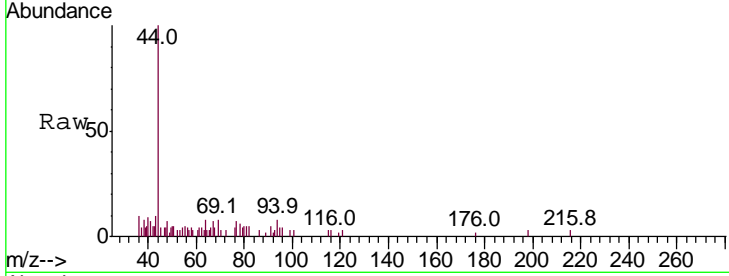




#5
 Bromomethane
 Concen: Below Cal
 RT: 1.65 min Scan# 125
 Delta R.T. 0.03 min
 Lab File: VX012340.D
 Acq: 12 Sep 2019 10:50

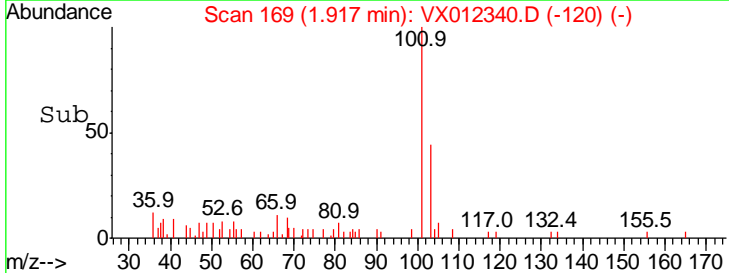
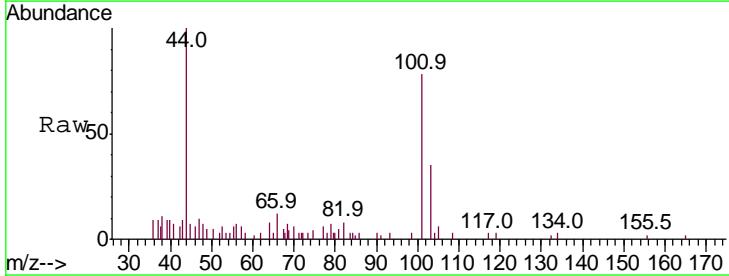
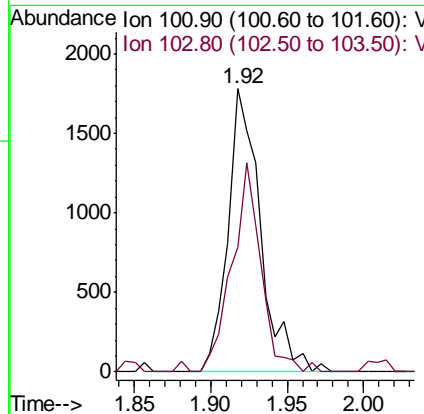
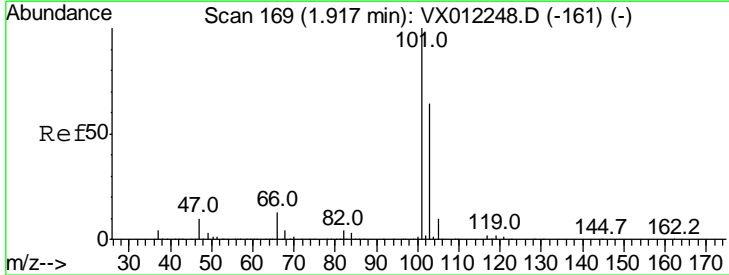
Instrument :
 MSVOA_X
 ClientSampled :

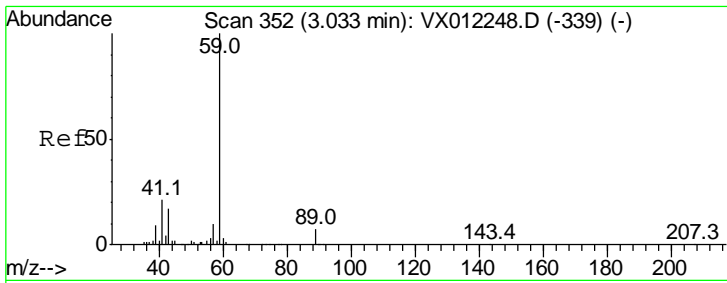
Tgt Ion: 94 Resp: 514
 Ion Ratio Lower Upper
 94 100
 96 16.5 74.0 111.0#



#7
 Trichlorofluoromethane
 Concen: 1.158 ug/l
 RT: 1.92 min Scan# 169
 Delta R.T. -0.00 min
 Lab File: VX012340.D
 Acq: 12 Sep 2019 10:50

Tgt Ion: 101 Resp: 2627
 Ion Ratio Lower Upper
 101 100
 103 44.3 51.4 77.2#

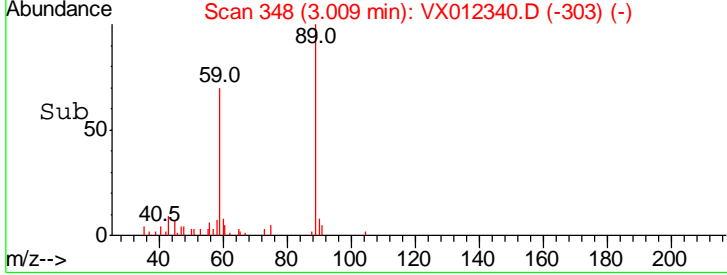
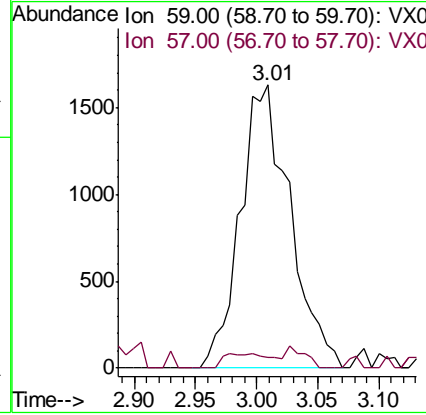
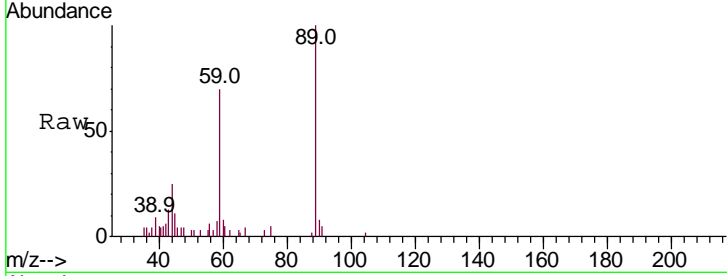




#11
 Tert butyl alcohol
 Concen: 8.932 ug/l
 RT: 3.01 min Scan# 348
 Delta R.T. -0.02 min
 Lab File: VX012340.D
 Acq: 12 Sep 2019 10:50

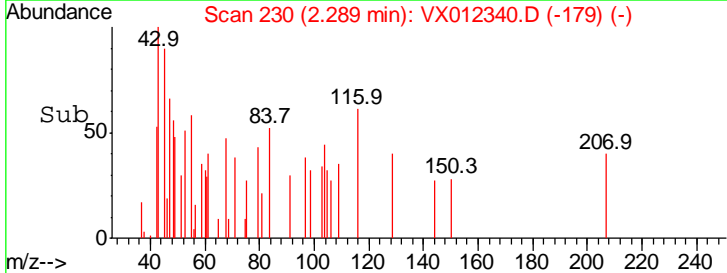
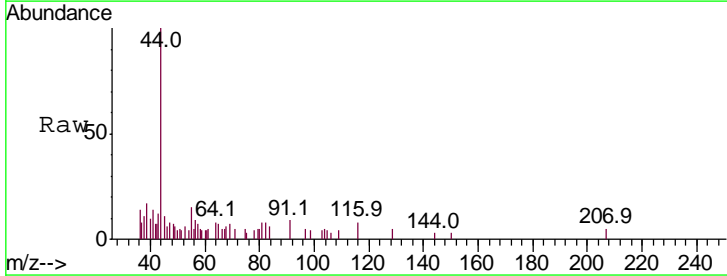
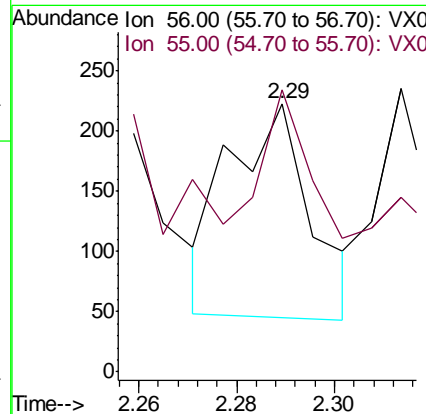
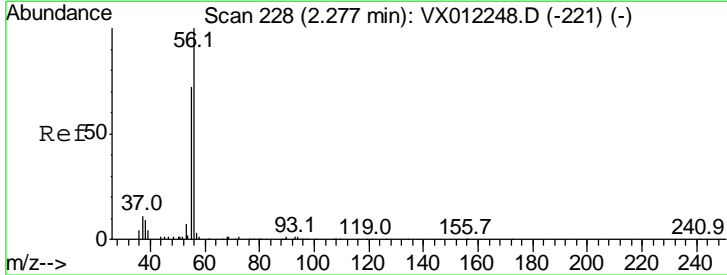
Instrument :
 MSVOA_X
 ClientSampled :

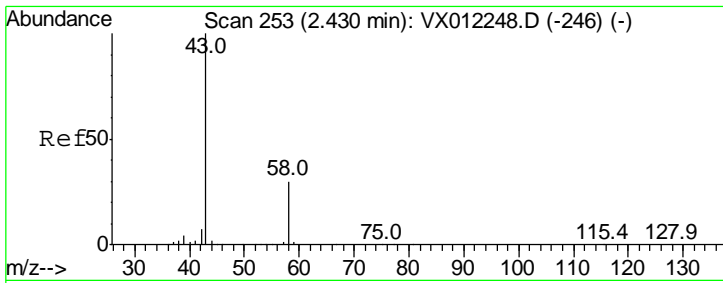
Tgt Ion	Resp	Lower	Upper
59	100		
57	3.8	7.8	11.6#



#13
 Acrolein
 Concen: 1.625 ug/l
 RT: 2.29 min Scan# 230
 Delta R.T. 0.01 min
 Lab File: VX012340.D
 Acq: 12 Sep 2019 10:50

Tgt Ion	Resp	Lower	Upper
56	100		
55	51.5	59.8	89.6#

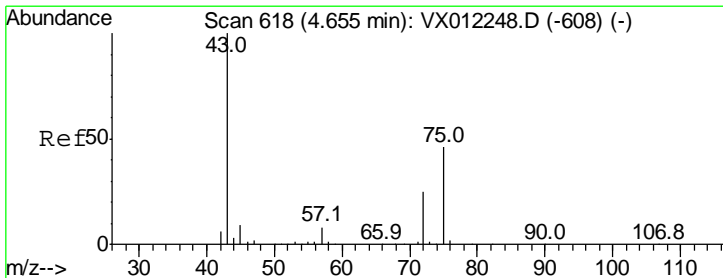
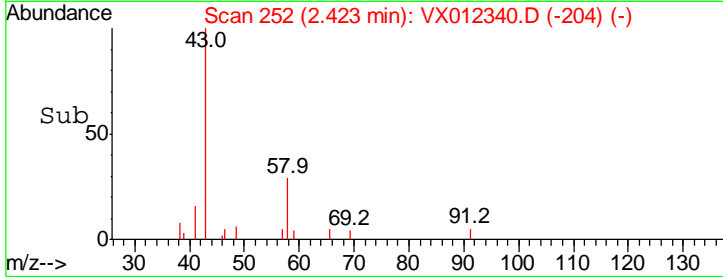
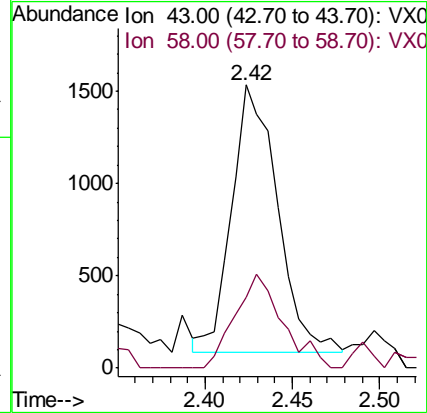
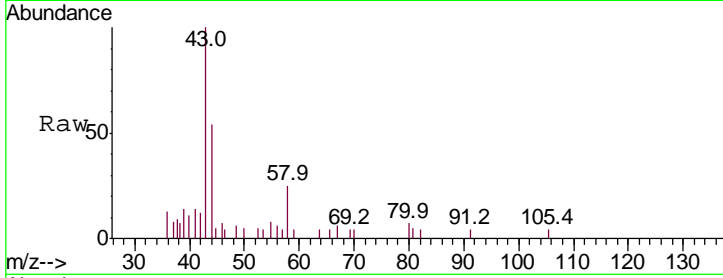




#16
 Acetone
 Concen: 4.575 ug/l
 RT: 2.42 min Scan# 252
 Delta R.T. -0.01 min
 Lab File: VX012340.D
 Acq: 12 Sep 2019 10:50

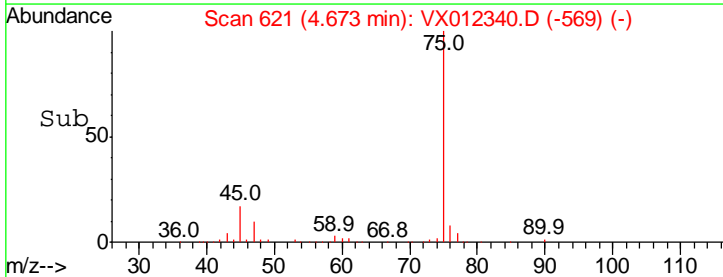
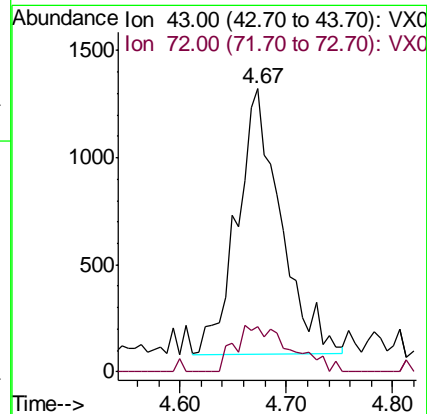
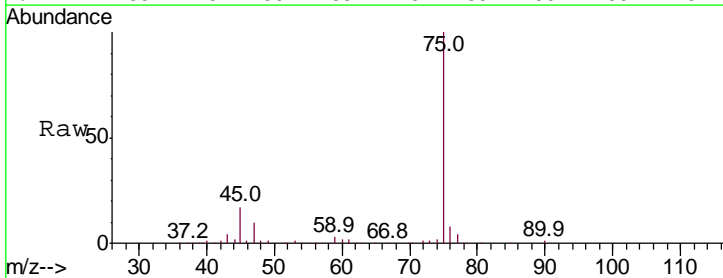
Instrument :
 MSVOA_X
 ClientSampled :

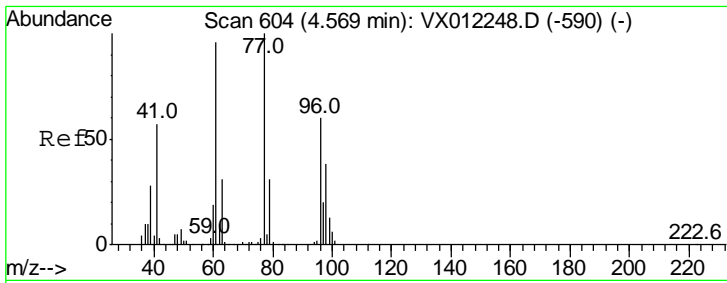
Tgt Ion	Ratio	Lower	Upper
43	100		
58	26.8	23.6	35.4



#25
 2-Butanone
 Concen: 4.836 ug/l
 RT: 4.67 min Scan# 621
 Delta R.T. 0.02 min
 Lab File: VX012340.D
 Acq: 12 Sep 2019 10:50

Tgt Ion	Ratio	Lower	Upper
43	100		
72	16.9	20.2	30.2#

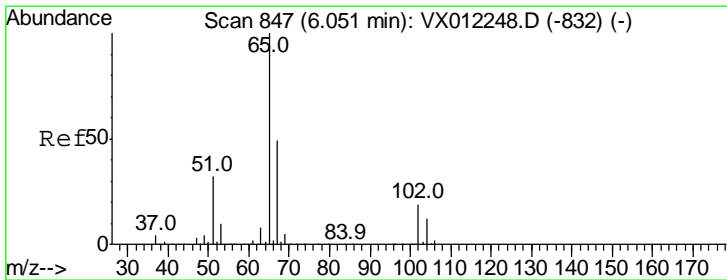
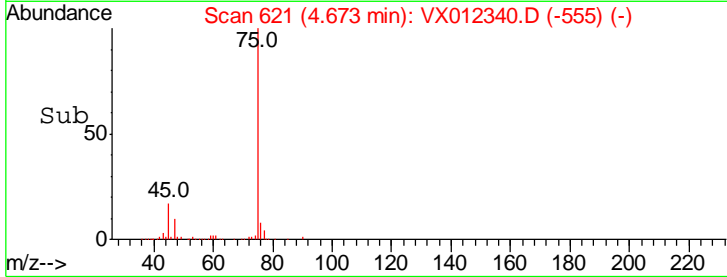
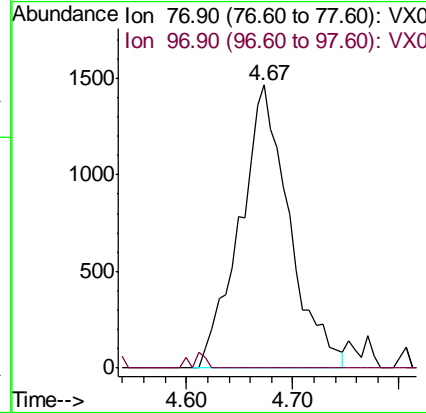
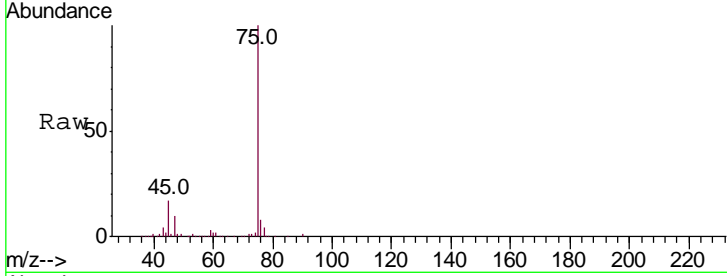




#26
 2,2-Dichloropropane
 Concen: 1.559 ug/l
 RT: 4.67 min Scan# 621
 Delta R.T. 0.10 min
 Lab File: VX012340.D
 Acq: 12 Sep 2019 10:50

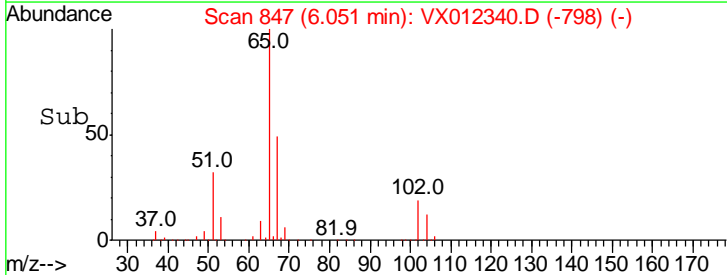
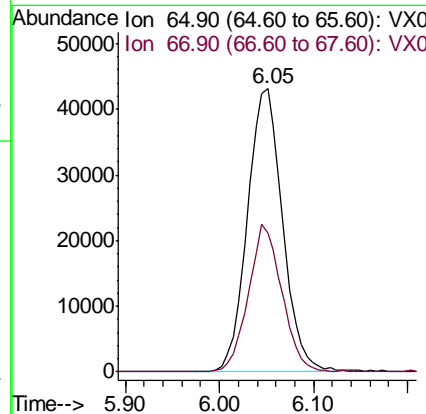
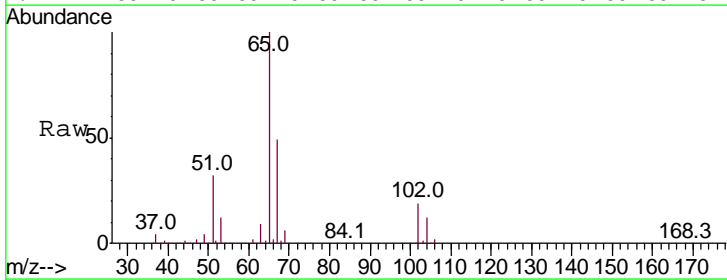
Instrument : MSVOA_X
 ClientSampled :

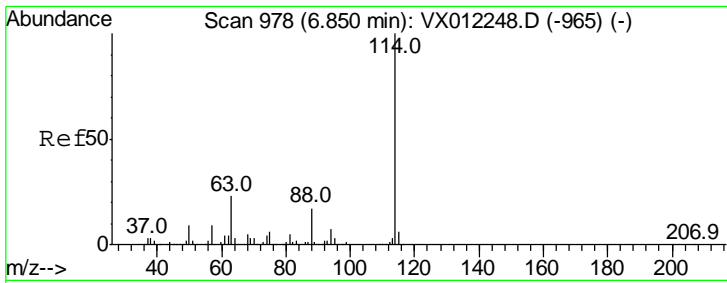
Tgt Ion: 77 Resp: 4743
 Ion Ratio Lower Upper
 77 100
 97 0.0 10.7 32.1#



#33
 1,2-Dichloroethane-d4
 Concen: 46.510 ug/l
 RT: 6.05 min Scan# 847
 Delta R.T. -0.00 min
 Lab File: VX012340.D
 Acq: 12 Sep 2019 10:50

Tgt Ion: 65 Resp: 112783
 Ion Ratio Lower Upper
 65 100
 67 49.7 0.0 99.8

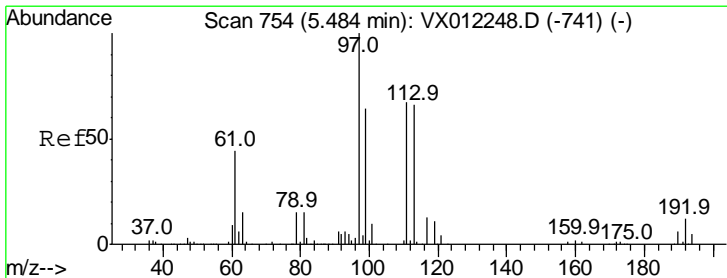
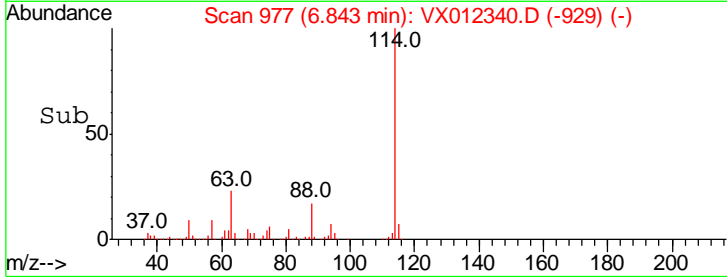
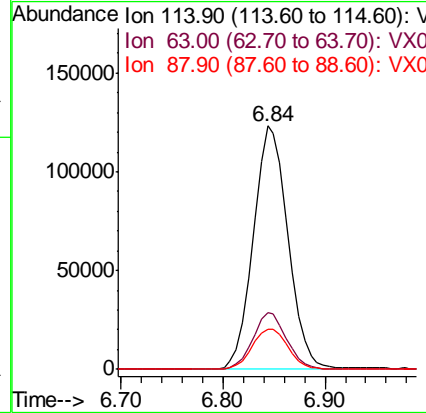
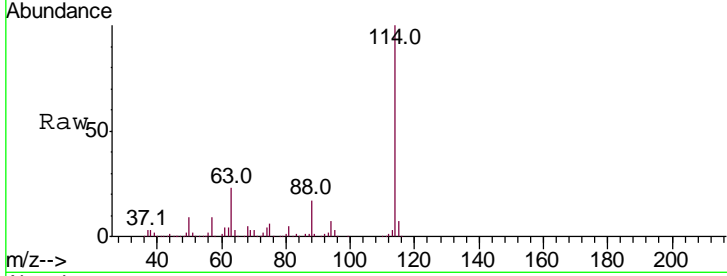




#34
 1,4-Difluorobenzene
 Concen: 50.000 ug/l
 RT: 6.84 min Scan# 977
 Delta R.T. -0.01 min
 Lab File: VX012340.D
 Acq: 12 Sep 2019 10:50

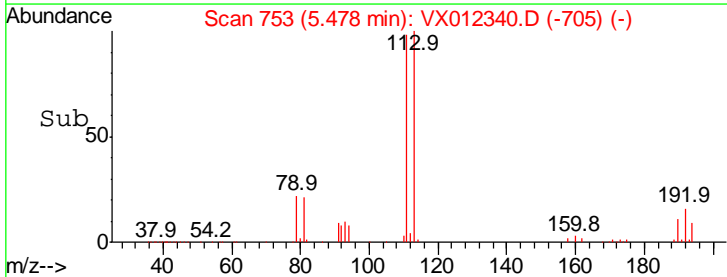
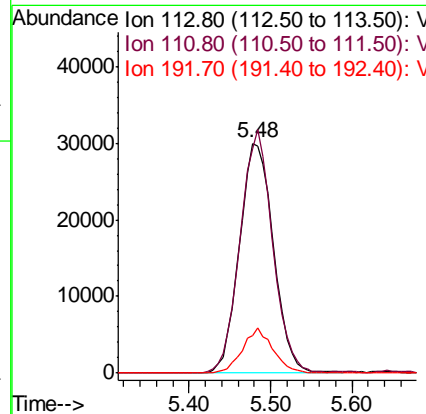
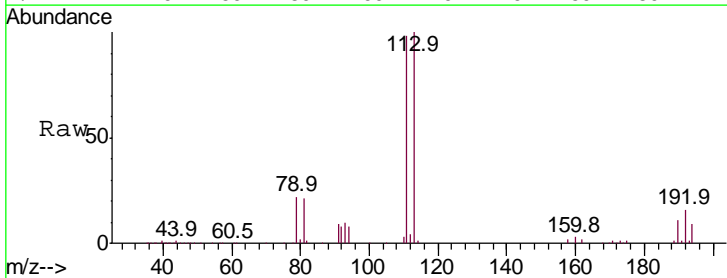
Instrument :
 MSVOA_X
 ClientSampled :

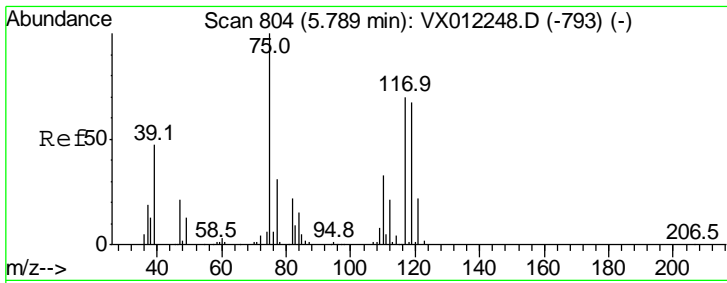
Tgt Ion	Resp	Lower	Upper
114	100		
63	23.3	0.0	45.2
88	16.6	0.0	34.8



#35
 Dibromofluoromethane
 Concen: 46.521 ug/l
 RT: 5.48 min Scan# 753
 Delta R.T. -0.01 min
 Lab File: VX012340.D
 Acq: 12 Sep 2019 10:50

Tgt Ion	Resp	Lower	Upper
113	100		
111	100.9	83.0	124.6
192	17.5	14.3	21.5

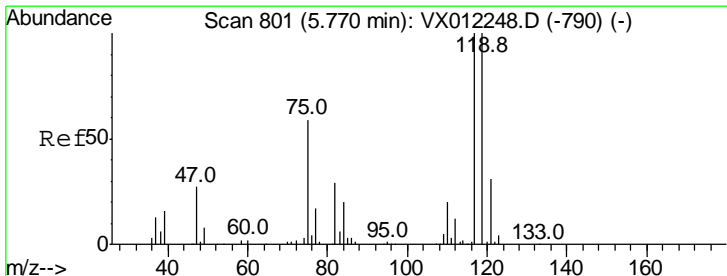
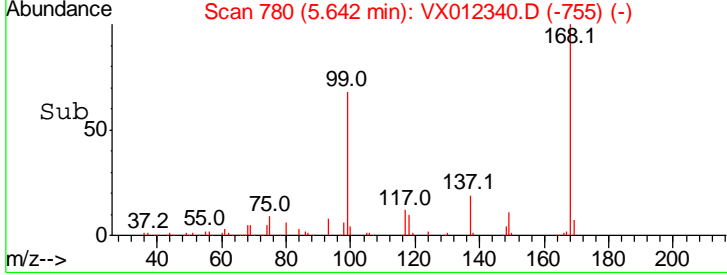
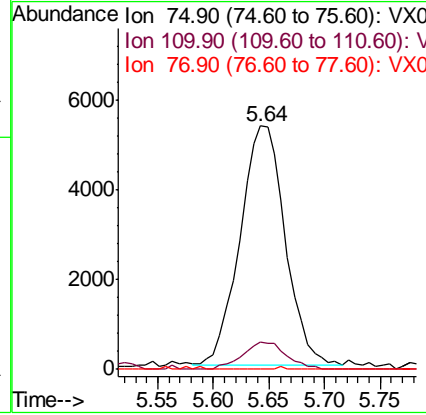
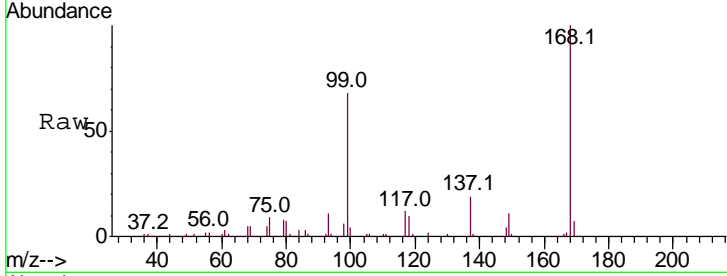




#36
 1,1-Dichloropropene
 Concen: 7.005 ug/l
 RT: 5.64 min Scan# 780
 Delta R.T. -0.15 min
 Lab File: VX012340.D
 Acq: 12 Sep 2019 10:50

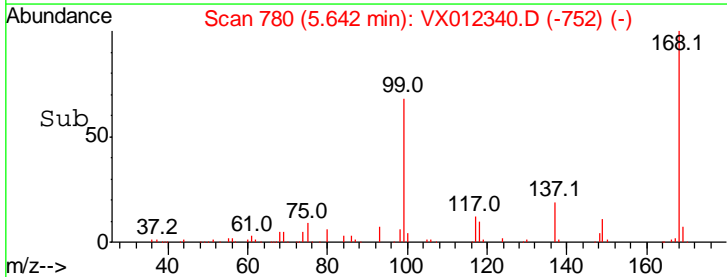
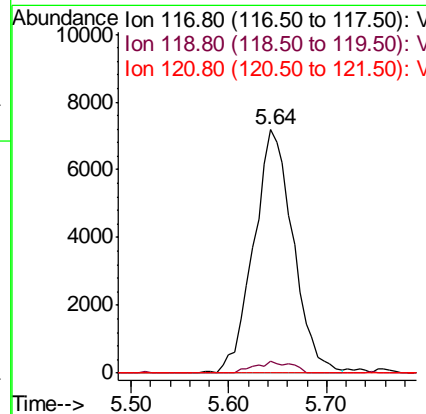
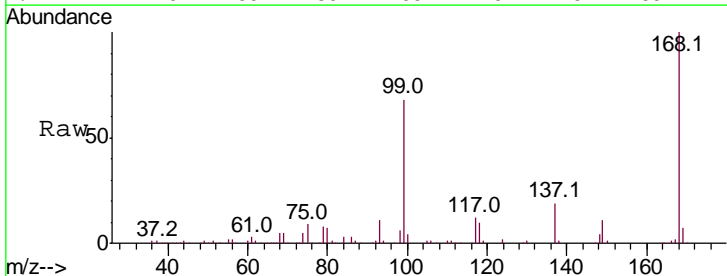
Instrument : MSVOA_X
 ClientSampled :

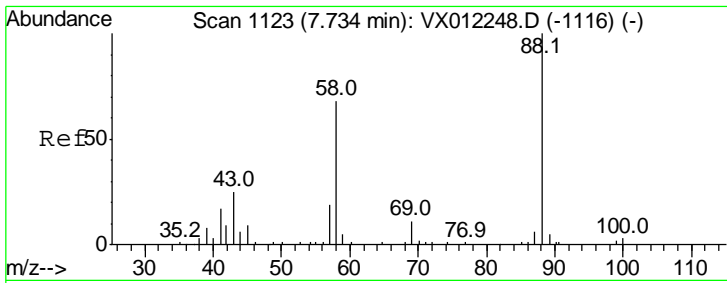
Tgt Ion	Resp	Lower	Upper
75	14880		
110	11.1	16.8	50.4#
77	0.1	24.5	36.7#



#38
 Carbon Tetrachloride
 Concen: 8.067 ug/l
 RT: 5.64 min Scan# 780
 Delta R.T. -0.13 min
 Lab File: VX012340.D
 Acq: 12 Sep 2019 10:50

Tgt Ion	Resp	Lower	Upper
117	20107		
119	4.9	79.6	119.4#
121	0.0	24.7	37.1#

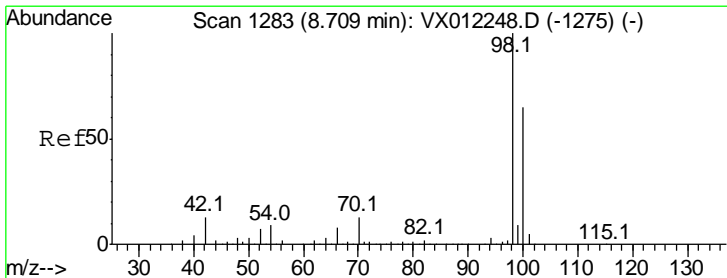
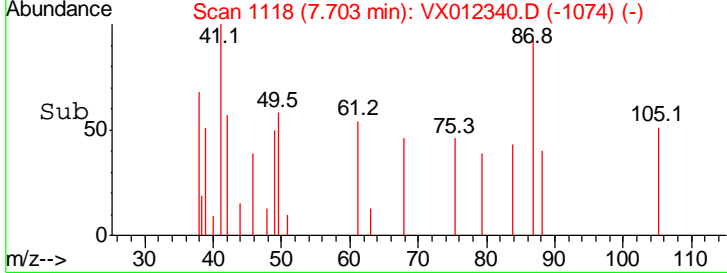
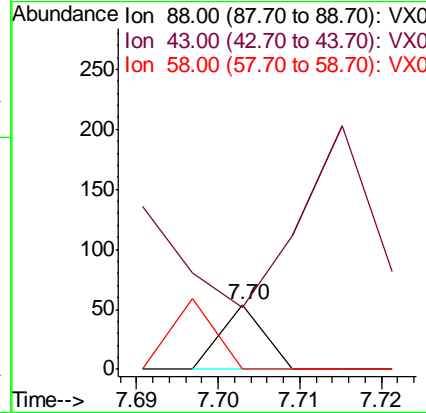
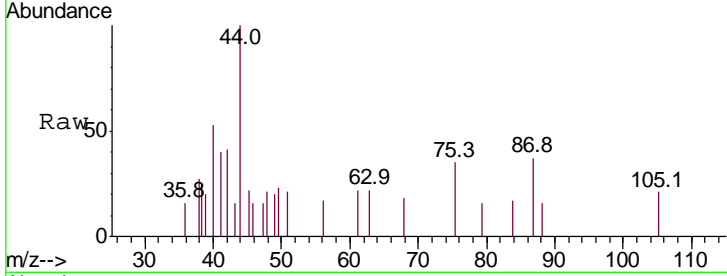




#49
 1,4-Dioxane
 Concen: 1.118 ug/l
 RT: 7.70 min Scan# 1118
 Delta R.T. -0.03 min
 Lab File: VX012340.D
 Acq: 12 Sep 2019 10:50

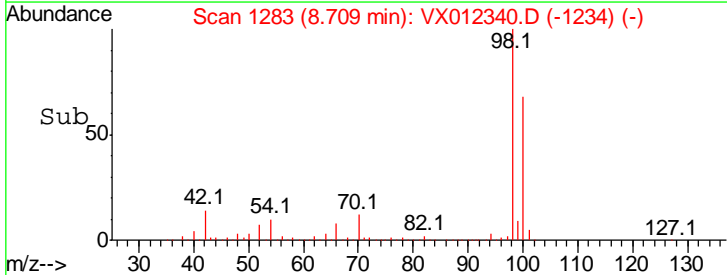
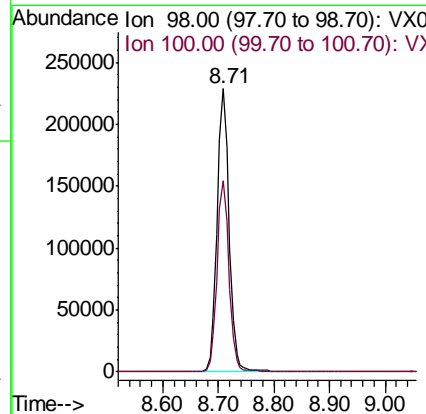
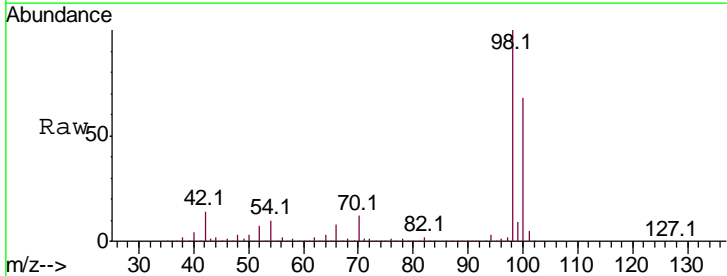
Instrument :
 MSVOA_X
 ClientSampled :

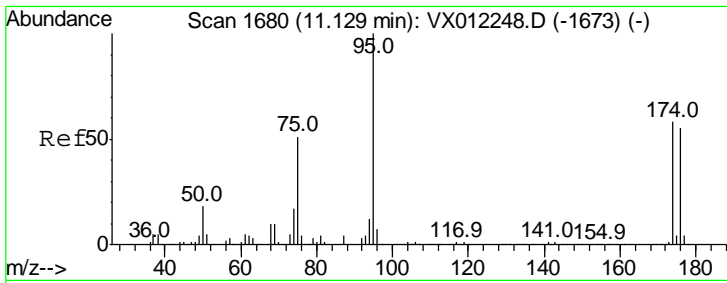
Tgt Ion	Resp	Lower	Upper
88	100		
43	0.0	31.0	46.4#
58	110.0	61.5	92.3#



#50
 Toluene-d8
 Concen: 53.054 ug/l
 RT: 8.71 min Scan# 1283
 Delta R.T. -0.00 min
 Lab File: VX012340.D
 Acq: 12 Sep 2019 10:50

Tgt Ion	Resp	Lower	Upper
98	100		
100	67.2	54.1	81.1

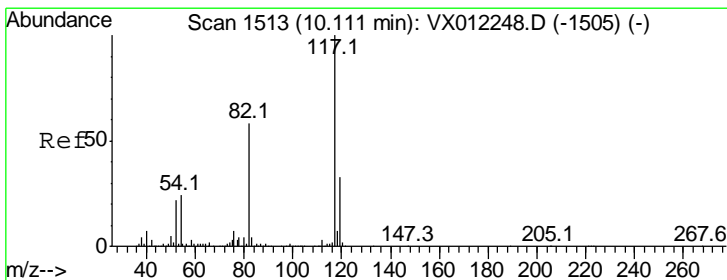
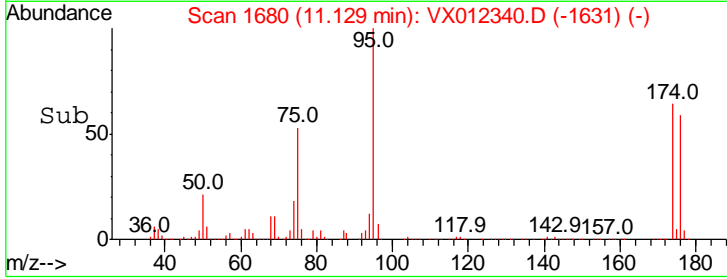
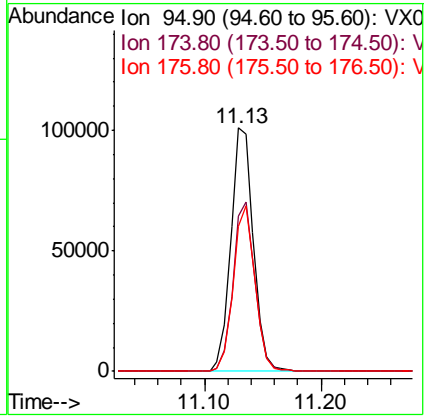
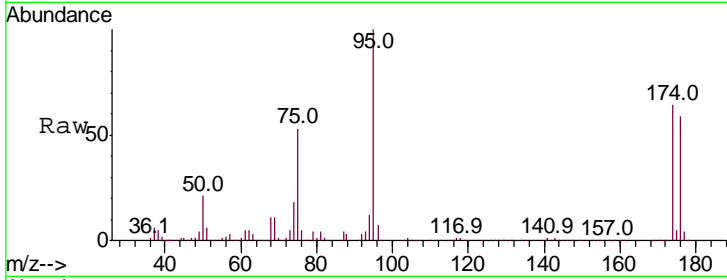




#62
 4-Bromofluorobenzene
 Concen: 44.846 ug/l
 RT: 11.13 min Scan# 1680
 Delta R.T. -0.00 min
 Lab File: VX012340.D
 Acq: 12 Sep 2019 10:50

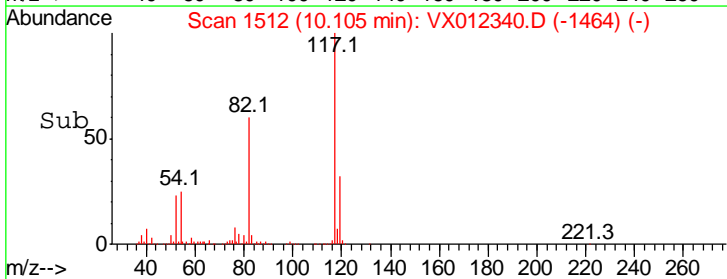
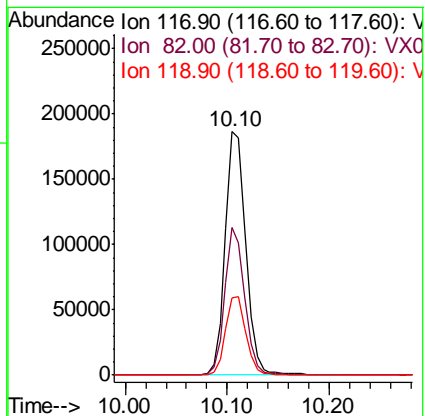
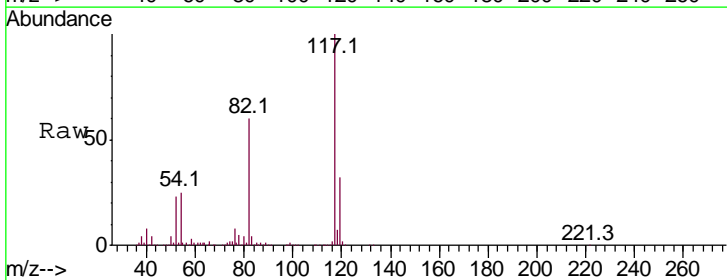
Instrument : MSVOA_X
 ClientSampled :

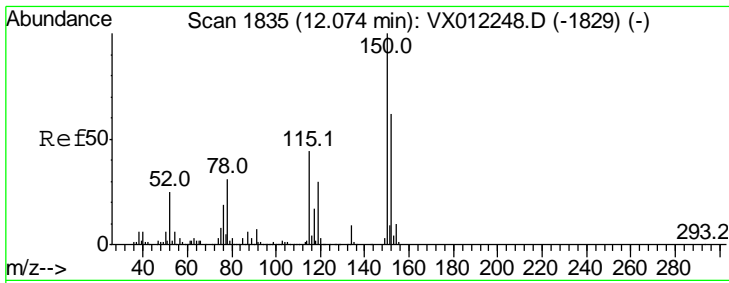
Tgt Ion	Resp	Lower	Upper
95	136185		
174	67.6	0.0	127.0
176	65.4	0.0	125.8



#63
 Chlorobenzene-d5
 Concen: 50.000 ug/l
 RT: 10.10 min Scan# 1512
 Delta R.T. -0.01 min
 Lab File: VX012340.D
 Acq: 12 Sep 2019 10:50

Tgt Ion	Resp	Lower	Upper
117	261772		
82	60.5	46.4	69.6
119	31.9	26.6	39.8

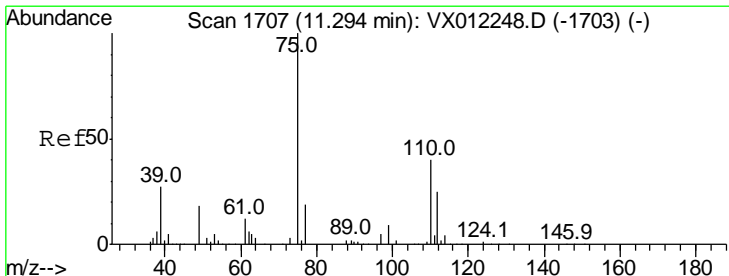
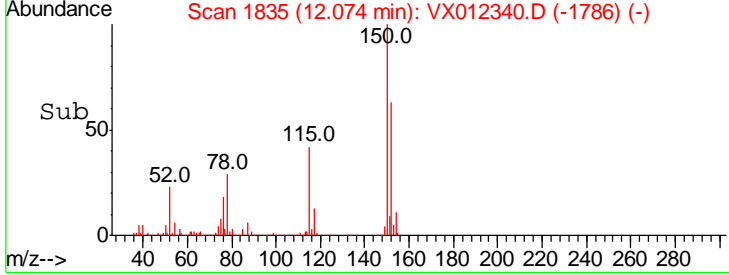
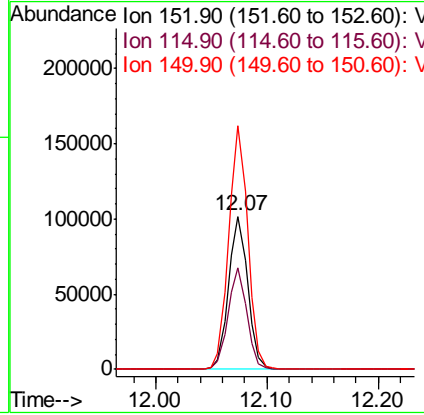
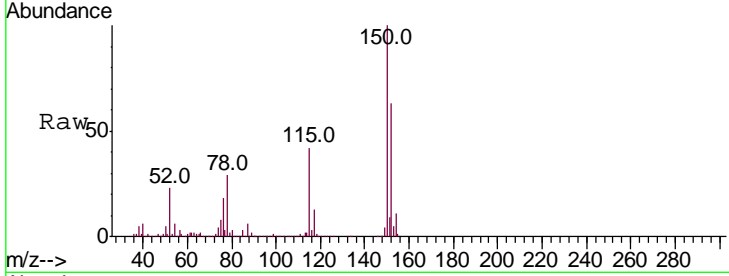




#72
 1,4-Dichlorobenzene-d4
 Concen: 50.000 ug/l
 RT: 12.07 min Scan# 1835
 Delta R.T. -0.00 min
 Lab File: VX012340.D
 Acq: 12 Sep 2019 10:50

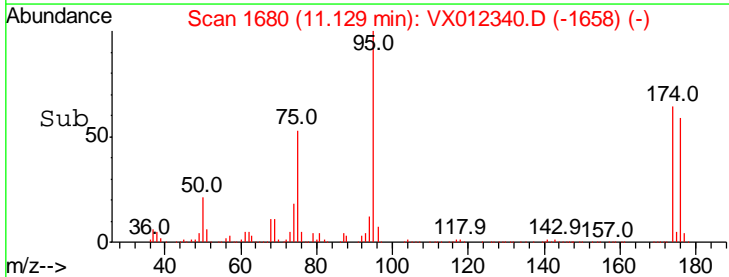
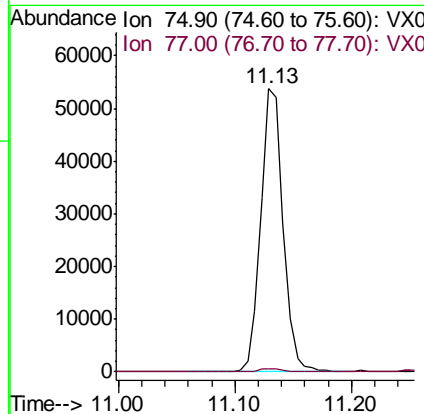
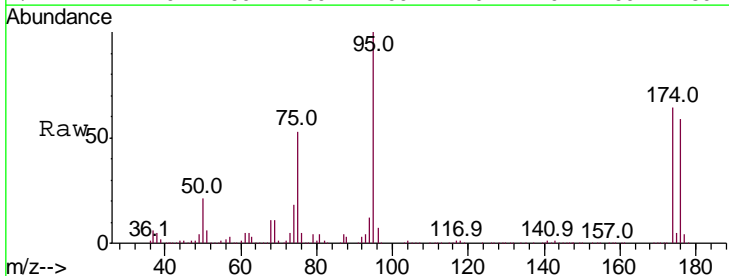
Instrument :
 MSVOA_X
 ClientSampled :

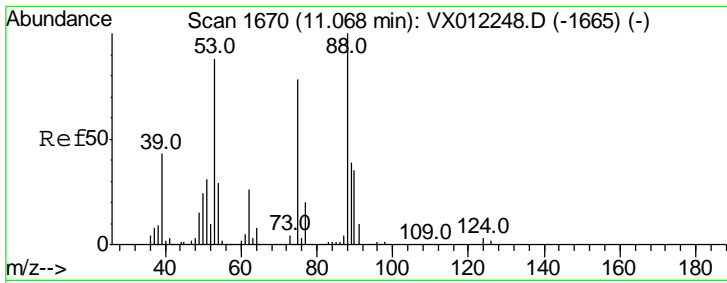
Tgt Ion	Resp	Lower	Upper
152	100		
115	65.2	45.5	136.4
150	158.9	0.0	346.4



#76
 1,2,3-Trichloropropane
 Concen: 46.316 ug/l
 RT: 11.13 min Scan# 1680
 Delta R.T. -0.16 min
 Lab File: VX012340.D
 Acq: 12 Sep 2019 10:50

Tgt Ion	Resp	Lower	Upper
75	100		
77	1.3	19.7	59.0#

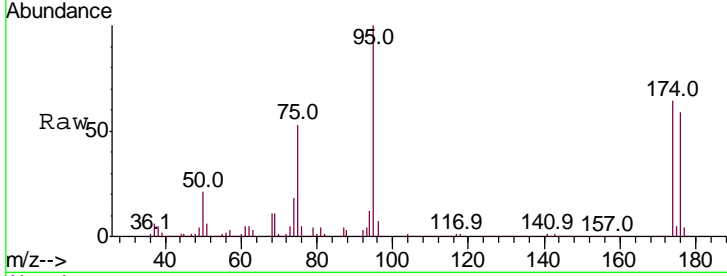




#81
 trans-1,4-Dichloro-2-butene
 Concen: 138.773 ug/l
 RT: 11.13 min Scan# 1680
 Delta R.T. 0.06 min
 Lab File: VX012340.D
 Acq: 12 Sep 2019 10:50

Instrument : MSVOA_X
 ClientSampled :

Tot Ion	Resp	Lower	Upper
75	71818		
53	0.2	88.1	132.1#
89	0.2	43.5	65.3#



Abundance Ion 74.90 (74.60 to 75.60): VX0
 Ion 53.00 (52.70 to 53.70): VX0
 Ion 88.90 (88.60 to 89.60): VX0

