

Data Path : Z:\VOASRV\HPCHEM1\MSVOA X\DATA\VX091219\
 Data File : VX012362.D
 Acq On : 12 Sep 2019 22:07
 Operator : SY/SP
 Sample : K4752-15
 Misc : 5.01g/5.0mL/MSVOA X/SOIL
 ALS Vial : 27 Sample Multiplier: 1

Instrument :
 MSVOA_X
 ClientSampleId :
 SB-17-18.5-19.0

Integration Parameters: RTEINT.P

Integrator: RTE
 Smoothing : ON Filtering: 5
 Sampling : 1 Min Area: 3 % of largest Peak
 Start Thrs: 0.2 Max Peaks: 100
 Stop Thrs : 0 Peak Location: TOP

If leading or trailing edge < 100 prefer < Baseline drop else tangent >
 Peak separation: 5

Method : Z:\VOASRV\HPCHEM1\MSVOA_X\METHOD\82X091019S.M
 Title : SW846 8260

Signal : TIC

peak #	R.T. min	first scan	max scan	last scan	PK TY	peak height	corr. area	corr. % max.	% of total
1	1.064	25	29	39	rVB	1491103	1499015	100.00%	23.008%
2	2.430	248	253	261	rVB	13229	22351	1.49%	0.343%
3	2.844	313	321	329	rBV	14129	27556	1.84%	0.423%
4	3.509	422	430	439	rBV2	18017	40959	2.73%	0.629%
5	5.484	741	754	767	rBV	98284	283525	18.91%	4.352%
6	5.649	770	781	794	rVV	192392	538979	35.96%	8.273%
7	6.051	833	847	862	rBV	113067	299661	19.99%	4.599%
8	6.850	966	978	990	rBV	291829	695028	46.37%	10.668%
9	8.709	1276	1283	1291	rBV	592506	912419	60.87%	14.004%
10	9.331	1375	1385	1390	rVB	20556	36302	2.42%	0.557%
11	10.111	1505	1513	1526	rBV	553763	791572	52.81%	12.150%
12	11.135	1674	1681	1694	rBV	447481	590106	39.37%	9.057%
13	11.361	1712	1718	1724	rBV	22318	31566	2.11%	0.484%
14	12.074	1829	1835	1845	rBV	593446	710854	47.42%	10.911%
15	12.812	1950	1956	1961	rBV	13356	19222	1.28%	0.295%
16	13.989	2144	2149	2154	rBV2	11675	16085	1.07%	0.247%

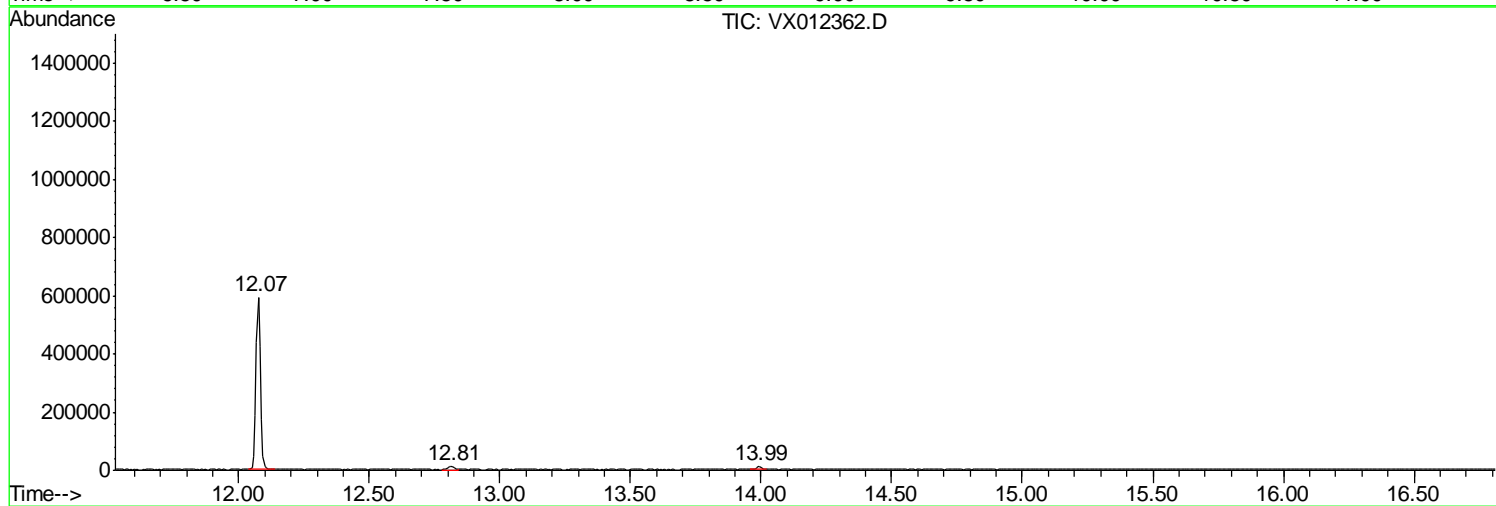
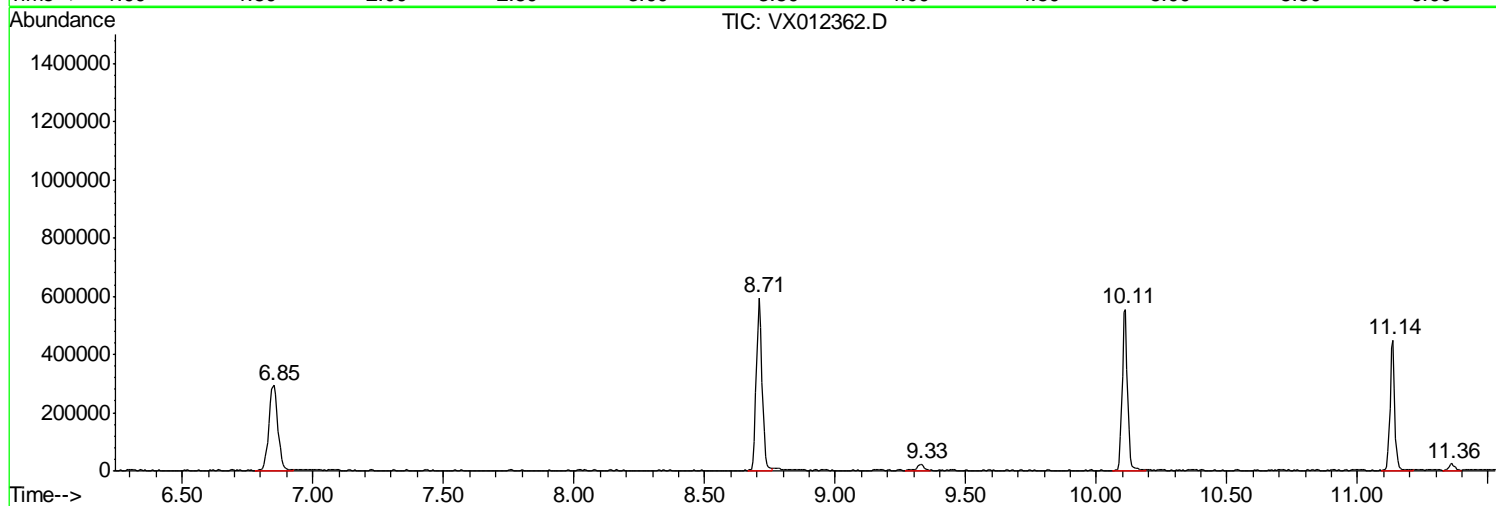
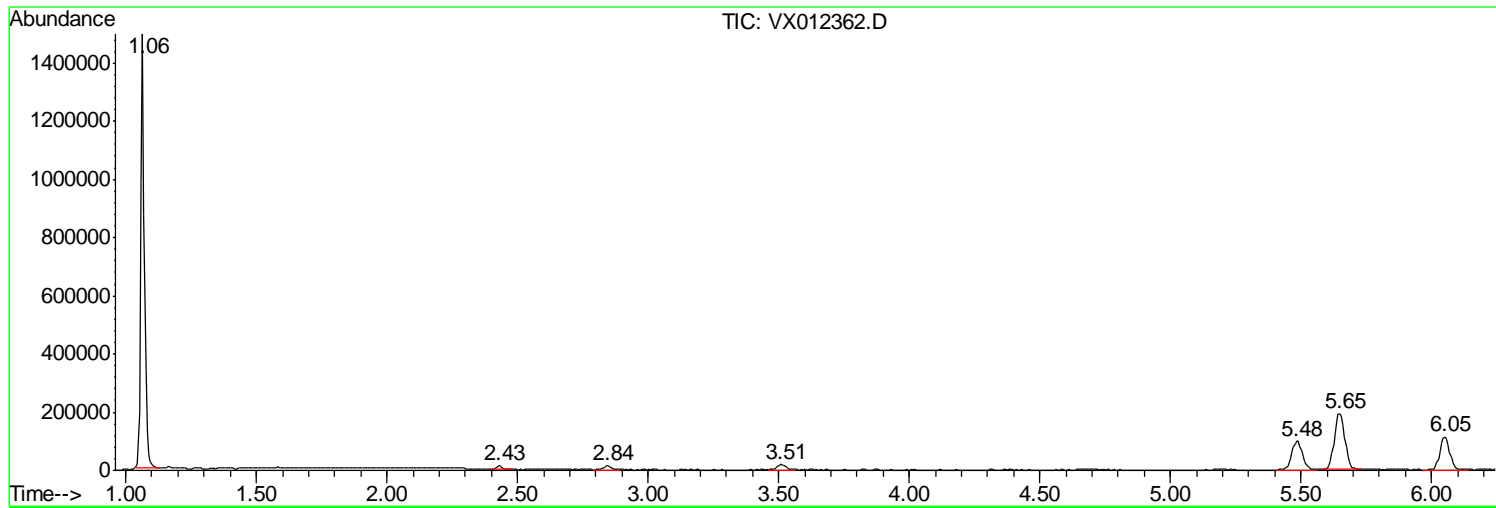
Sum of corrected areas: 6515200

Data Path : Z:\VOASRV\HPCHEM1\MSVOA X\DATA\VX091219\
Data File : VX012362.D
Acq On : 12 Sep 2019 22:07
Operator : SY/SP
Sample : K4752-15
Misc : 5.01µ/5.0mL/MSVOA X/SOIL
ALS Vial : 27 Sample Multiplier: 1

Instrument :
MSVOA_X
ClientSampleId :
SB-17-18.5-19.0

Quant Method : Z:\VOASRV\HPCHEM1\MSVOA_X\METHOD\82X091019S.M
Quant Title : SW846 8260

TIC Library : C:\DATABASE\NIST11.L
TIC Integration Parameters: LSCINT.P



Data Path : Z:\VOASRV\HPCHEM1\MSVOA_X\DATA\VX091219\
Data File : VX012362.D
Acq On : 12 Sep 2019 22:07
Operator : SY/SP
Sample : K4752-15
Misc : 5.01g/5.0mL/MSVOA_X/SOIL
ALS Vial : 27 Sample Multiplier: 1

Instrument :
MSVOA_X
ClientSampleId :
SB-17-18.5-19.0

Quant Method : Z:\VOASRV\HPCHEM1\MSVOA_X\METHOD\82X091019S.M
Quant Title : SW846 8260

TIC Library : C:\DATABASE\NIST11.L
TIC Integration Parameters: LSCINT.P

No Library Search Compounds Detected

Data Path : Z:\VOASRV\HPCHEM1\MSVOA_X\DATA\VX091219\
Data File : VX012362.D
Acq On : 12 Sep 2019 22:07
Operator : SY/SP
Sample : K4752-15
Misc : 5.01g/5.0mL/MSVOA_X/SOIL
ALS Vial : 27 Sample Multiplier: 1

Instrument :
MSVOA_X
ClientSampleId :
SB-17-18.5-19.0

Quant Method : Z:\VOASRV\HPCHEM1\MSVOA_X\METHOD\82X091019S.M
Quant Title : SW846 8260

TIC Library : C:\DATABASE\NIST11.L
TIC Integration Parameters: LSCINT.P

TIC Top Hit name	RT	EstConc	Units	Response	--Internal Standard--			
					#	RT	Resp	Conc
