

Data Path : Z:\VOASRV\HPCHEM1\MSVOA X\DATA\VX091318\
 Data File : VX004508.D
 Acq On : 13 Sep 2018 11:33
 Operator : JC/MD
 Sample : VX0913WBL01
 Misc : 5.00mL/MSVOA X/WATER
 ALS Vial : 4 Sample Multiplier: 1

Instrument :
 MSVOA_X
 ClientSampled :
 VX0913WBL01

Quant Time: Sep 14 03:51:07 2018
 Quant Method : Z:\VOASRV\HPCHEM1\MSVOA_X\METHOD\82X091118W.M
 Quant Title : SW846 8260
 QLast Update : Wed Sep 12 02:17:23 2018
 Response via : Initial Calibration

Internal Standards	R.T.	QIon	Response	Conc	Units	Dev(Min)
1) Pentafluorobenzene	5.67	168	252047	50.00	ug/l	0.00
34) 1,4-Difluorobenzene	6.86	114	349681	50.00	ug/l	0.00
63) Chlorobenzene-d5	10.12	117	331059	50.00	ug/l	0.00
72) 1,4-Dichlorobenzene-d4	12.08	152	185348	50.00	ug/l	0.00

System Monitoring Compounds

33) 1,2-Dichloroethane-d4	6.07	65	166680	51.29	ug/l	0.00
Spiked Amount	50.000		Recovery	=	102.58%	
35) Dibromofluoromethane	5.49	113	150952	47.17	ug/l	0.00
Spiked Amount	50.000		Recovery	=	94.34%	
50) Toluene-d8	8.71	98	497278	46.34	ug/l	0.00
Spiked Amount	50.000		Recovery	=	92.68%	
62) 4-Bromofluorobenzene	11.14	95	175266	45.76	ug/l	0.00
Spiked Amount	50.000		Recovery	=	91.52%	

Target Compounds

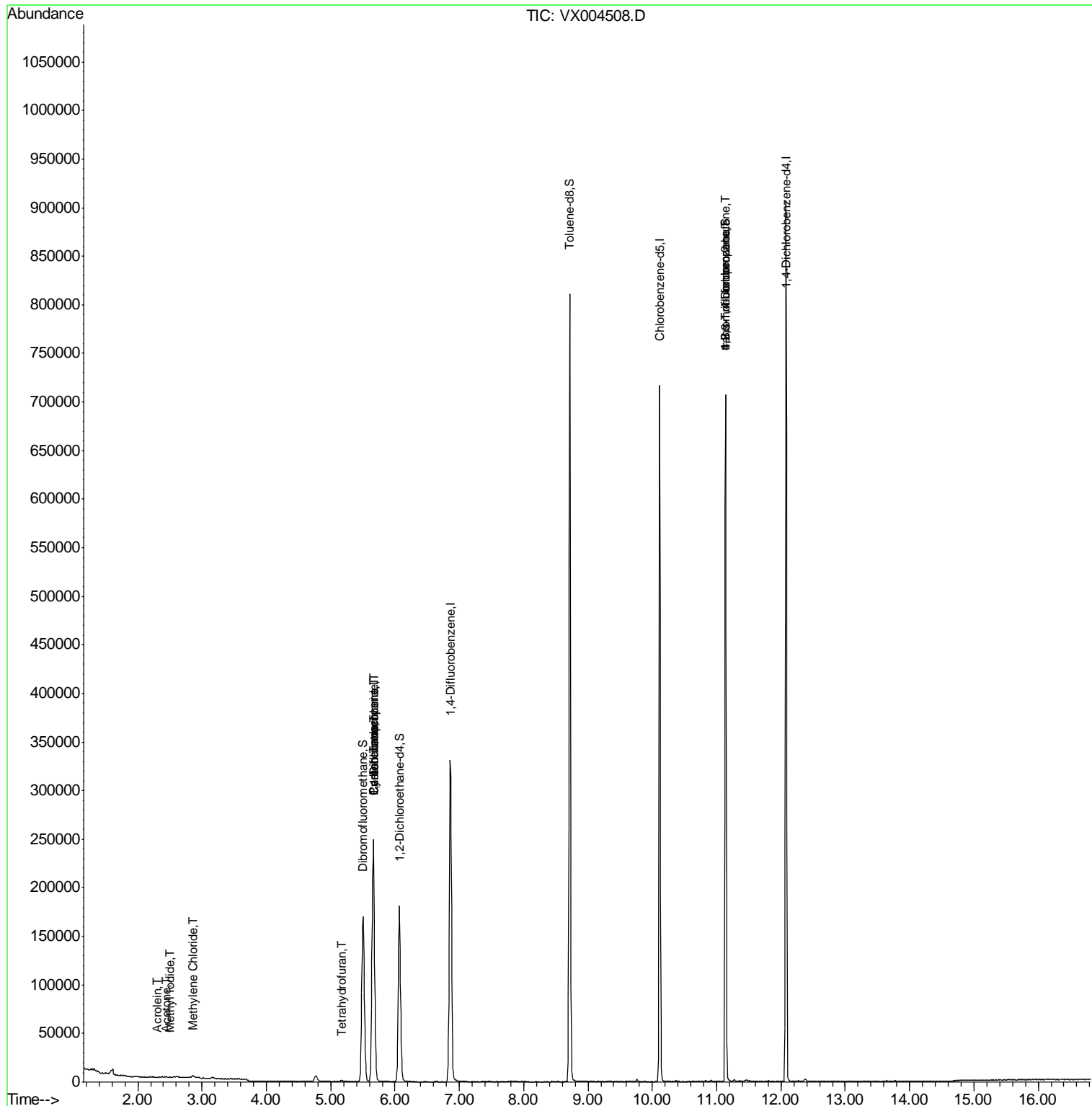
						Qvalue
5) Bromomethane	1.64	94	859	Below Cal	#	77
10) Methyl Iodide	2.51	142	422	4.37	ug/l #	85
13) Acrolein	2.29	56	182	0.59	ug/l	91
16) Acetone	2.45	43	693	0.44	ug/l #	86
20) Methylene Chloride	2.85	84	947	0.29	ug/l #	85
29) Tetrahydrofuran	5.17	42	973	0.64	ug/l #	79
31) Cyclohexane	5.67	56	4232	0.90	ug/l #	1
36) 1,1-Dichloropropene	5.67	75	16110	3.79	ug/l #	49
38) Carbon Tetrachloride	5.67	117	21621	5.21	ug/l #	17
76) 1,2,3-Trichloropropane	11.14	75	82777	22.20	ug/l #	37
81) trans-1,4-Dichloro-2-buten	11.14	75	82777	70.76	ug/l #	10

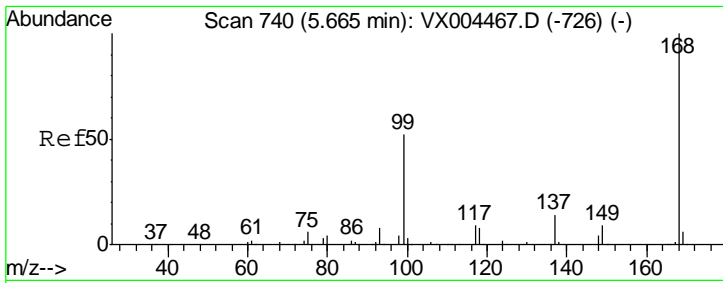
(#) = qualifier out of range (m) = manual integration (+) = signals summed

Data Path : Z:\VOASRV\HPCHEM1\MSVOA X\DATA\VX091318\
 Data File : VX004508.D
 Acq On : 13 Sep 2018 11:33
 Operator : JC/MD
 Sample : VX0913WBL01
 Misc : 5.00mL/MSVOA X/WATER
 ALS Vial : 4 Sample Multiplier: 1

Instrument :
 MSVOA_X
 Client Sampled :
 VX0913WBL01

Quant Time: Sep 14 03:51:07 2018
 Quant Method : Z:\VOASRV\HPCHEM1\MSVOA_X\METHOD\82X091118W.M
 Quant Title : SW846 8260
 QLast Update : Wed Sep 12 02:17:23 2018
 Response via : Initial Calibration

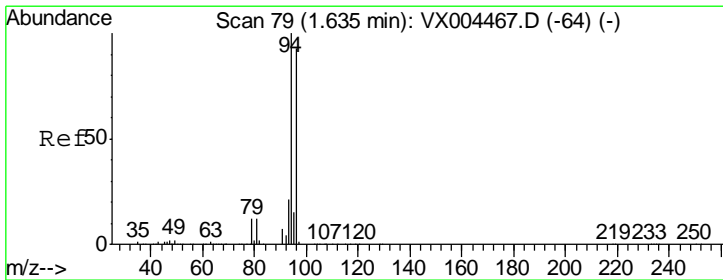
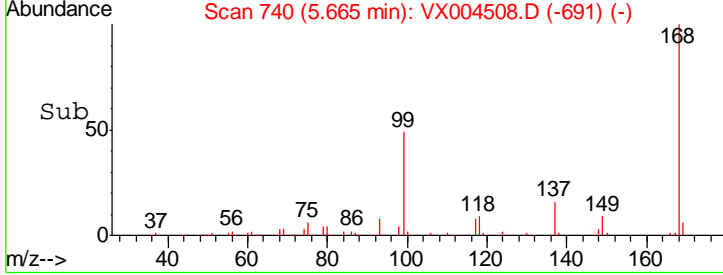
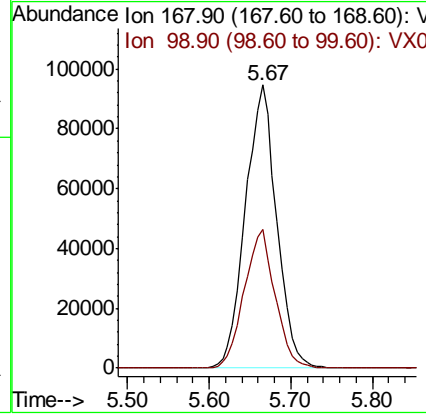
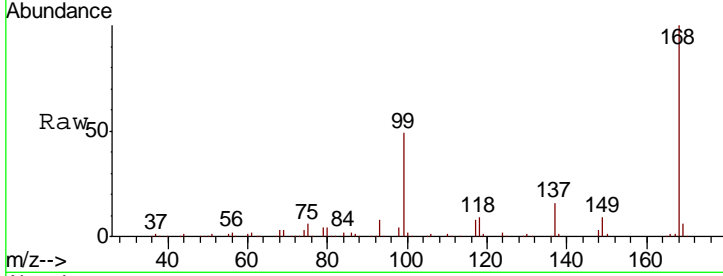




#1
 Pentafluorobenzene
 Concen: 50.00 ug/l
 RT: 5.67 min Scan# 740
 Delta R.T. -0.00 min
 Lab File: VX004508.D
 Acq: 13 Sep 2018 11:33

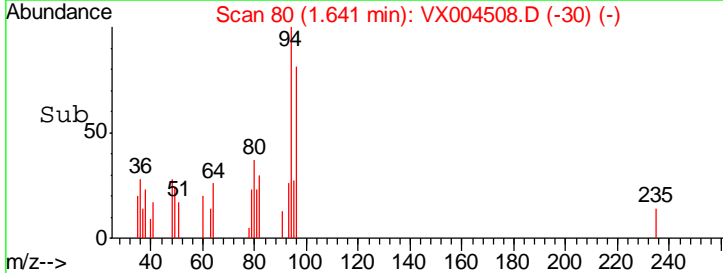
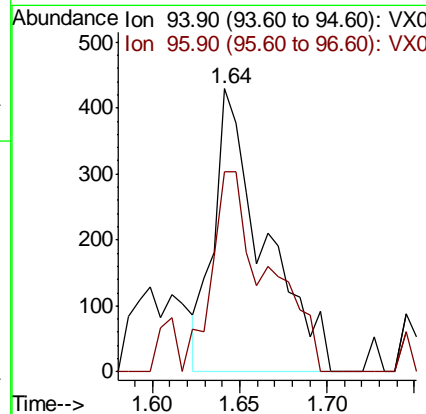
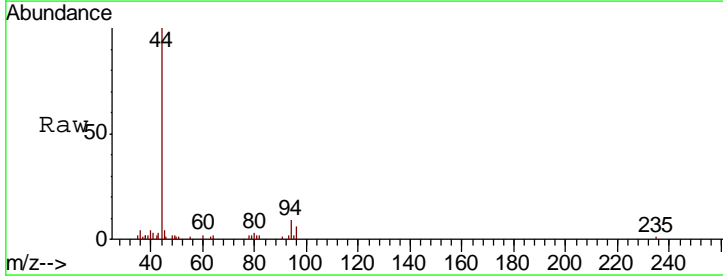
Instrument : MSVOA_X
 ClientSampleID : VX0913WBL01

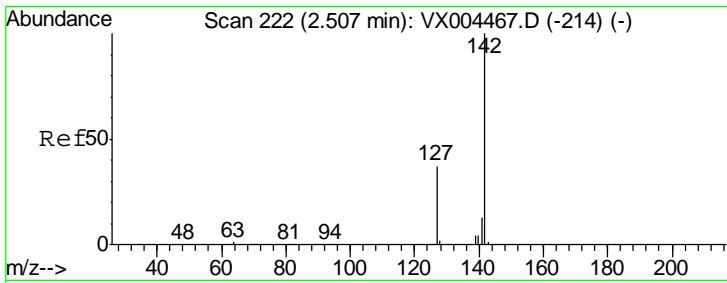
Tgt Ion	Resp	Lower	Upper
168	100		
99	48.8	39.9	59.9



#5
 Bromomethane
 Concen: Below Cal
 RT: 1.64 min Scan# 80
 Delta R.T. 0.01 min
 Lab File: VX004508.D
 Acq: 13 Sep 2018 11:33

Tgt Ion	Resp	Lower	Upper
94	100		
96	70.9	74.5	111.7#

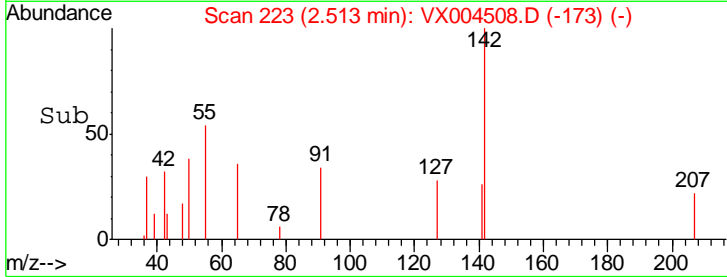
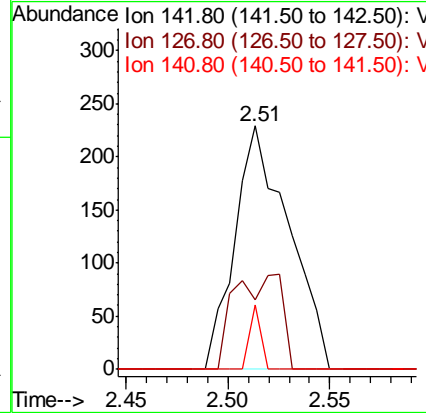
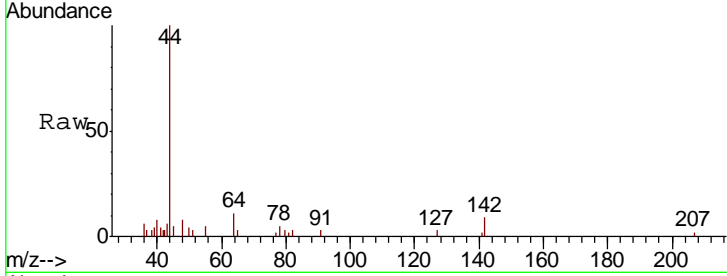




#10
Methyl Iodide
Concen: 4.37 ug/l
RT: 2.51 min Scan# 223
Delta R.T. 0.01 min
Lab File: VX004508.D
Acq: 13 Sep 2018 11:33

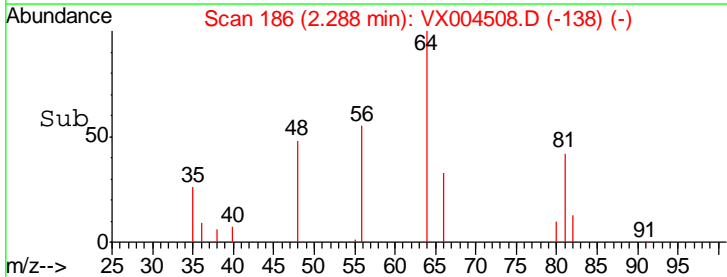
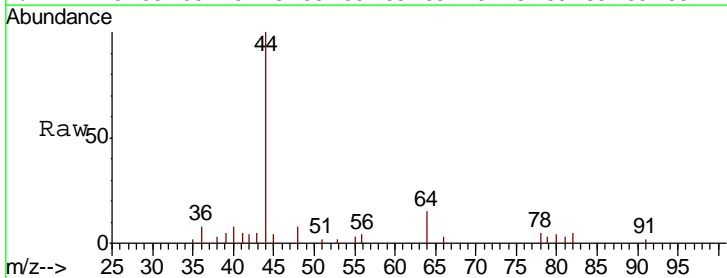
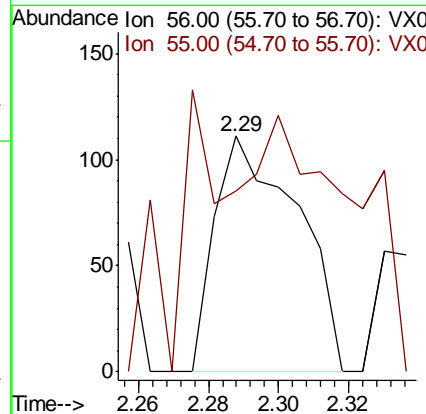
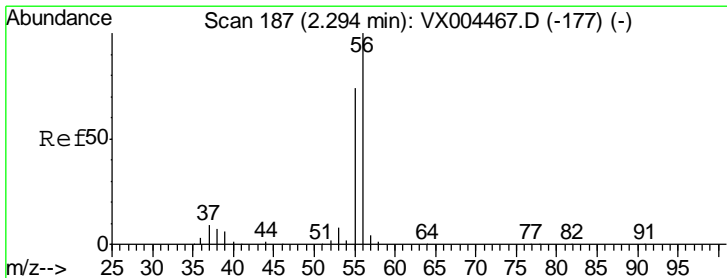
Instrument :
MSVOA_X
ClientSampled :
VX0913WBL01

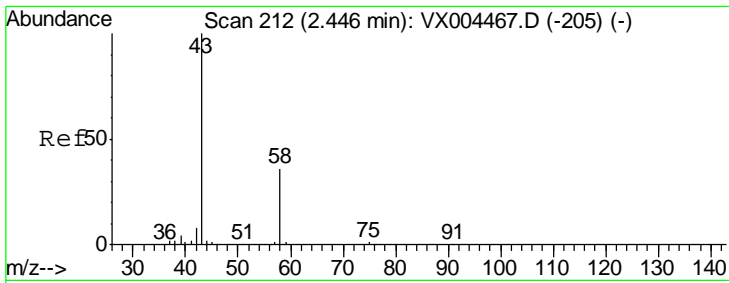
Tgt Ion	Resp	Lower	Upper
142	422		
127	34.4	33.8	50.6
141	5.2	11.4	17.0#



#13
Acrolein
Concen: 0.59 ug/l
RT: 2.29 min Scan# 186
Delta R.T. -0.01 min
Lab File: VX004508.D
Acq: 13 Sep 2018 11:33

Tgt Ion	Resp	Lower	Upper
56	182		
55	75.8	54.7	82.1

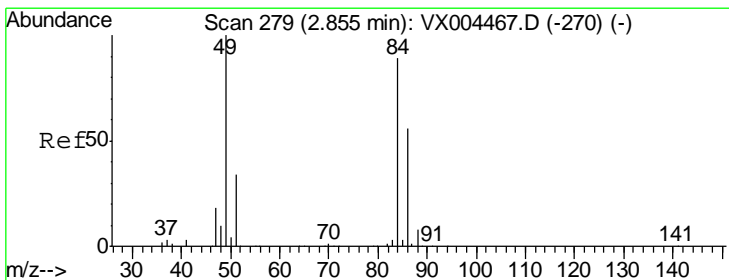
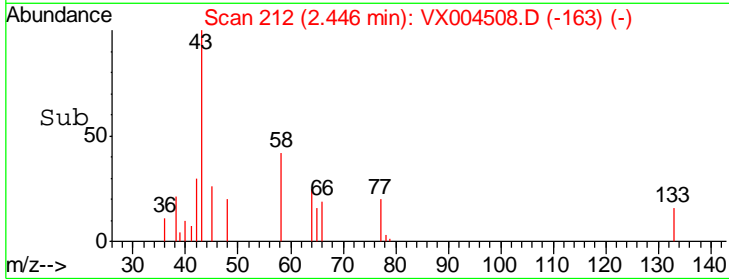
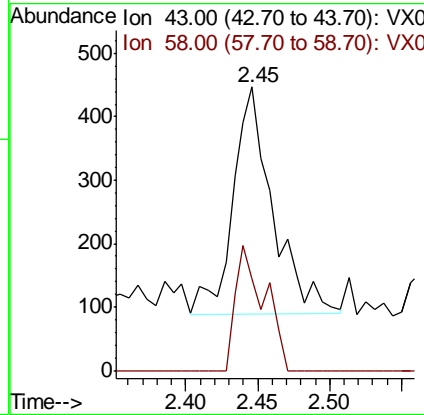
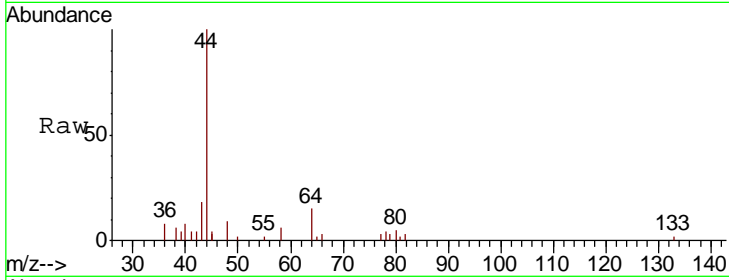




#16
 Acetone
 Concen: 0.44 ug/l
 RT: 2.45 min Scan# 212
 Delta R.T. -0.00 min
 Lab File: VX004508.D
 Acq: 13 Sep 2018 11:33

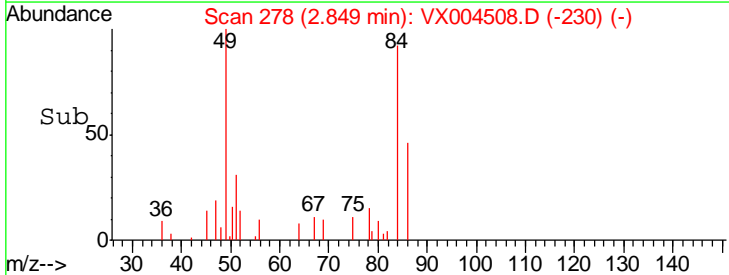
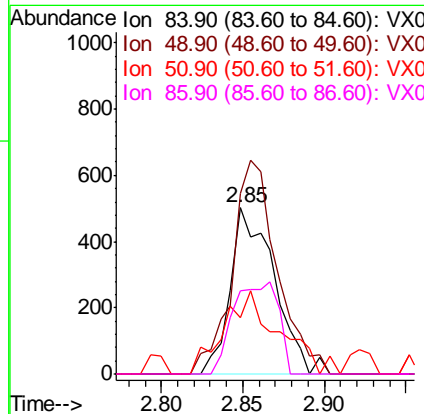
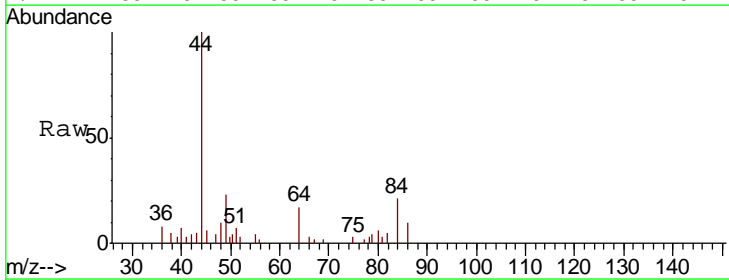
Instrument :
 MSVOA_X
 ClientSampled :
 VX0913WBL01

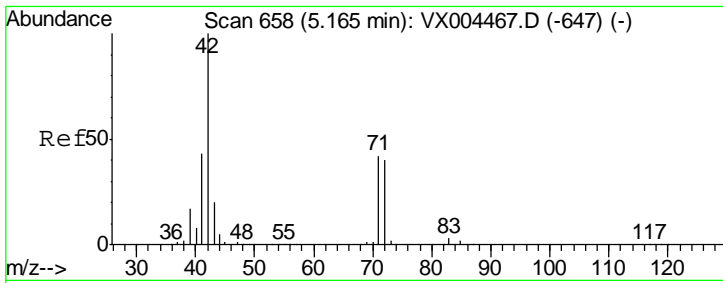
Tgt Ion	Resp	Lower	Upper
43	693		
58	40.6	26.2	39.4



#20
 Methylene Chloride
 Concen: 0.29 ug/l
 RT: 2.85 min Scan# 278
 Delta R.T. -0.01 min
 Lab File: VX004508.D
 Acq: 13 Sep 2018 11:33

Tgt Ion	Resp	Lower	Upper
84	947		
49	108.4	101.2	151.8
51	34.1	29.5	44.3
86	49.8	52.3	78.5

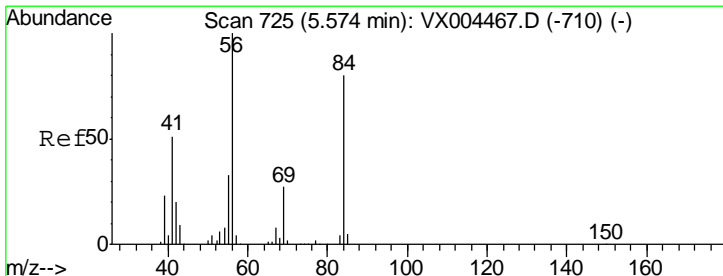
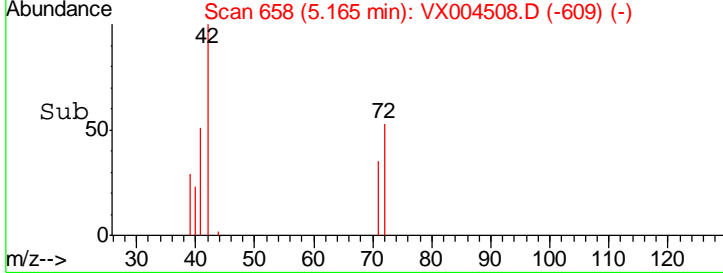
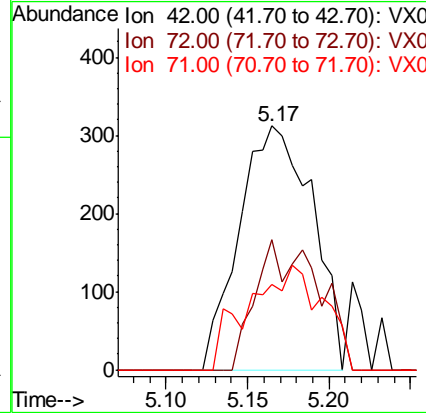
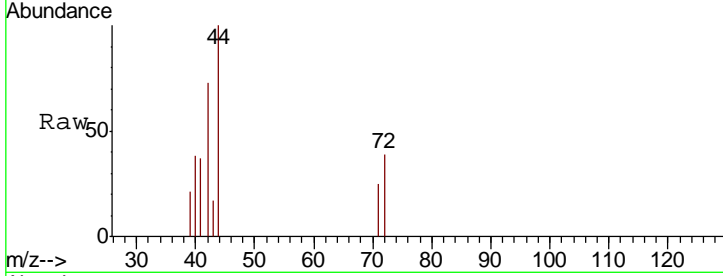




#29
 Tetrahydrofuran
 Concen: 0.64 ug/l
 RT: 5.17 min Scan# 658
 Delta R.T. -0.00 min
 Lab File: VX004508.D
 Acq: 13 Sep 2018 11:33

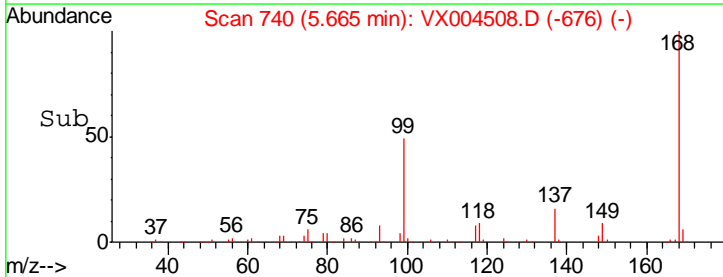
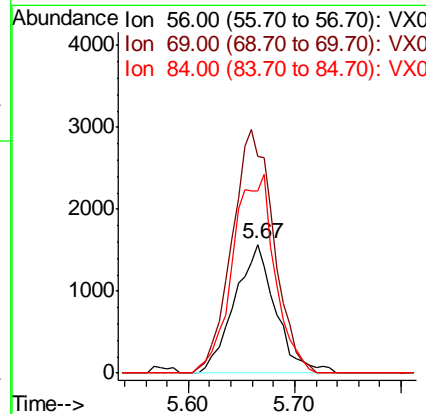
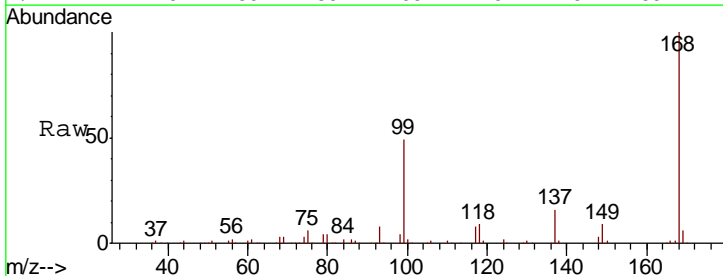
Instrument :
 MSVOA_X
 ClientSampled :
 VX0913WBL01

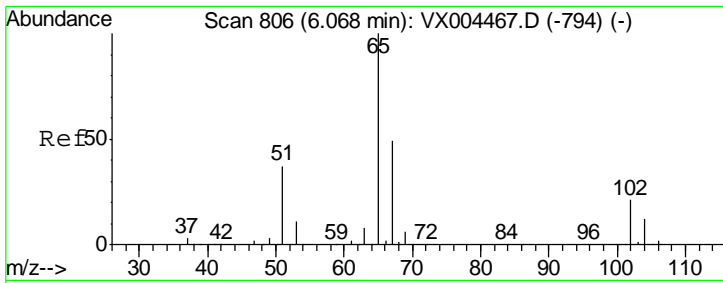
Tgt Ion	Resp	Lower	Upper
42	973		
72	20.6	37.4	56.0#
71	43.9	34.5	51.7



#31
 Cyclohexane
 Concen: 0.90 ug/l
 RT: 5.67 min Scan# 740
 Delta R.T. 0.09 min
 Lab File: VX004508.D
 Acq: 13 Sep 2018 11:33

Tgt Ion	Resp	Lower	Upper
56	4232		
69	168.5	25.4	38.2#
84	140.9	71.4	107.2#

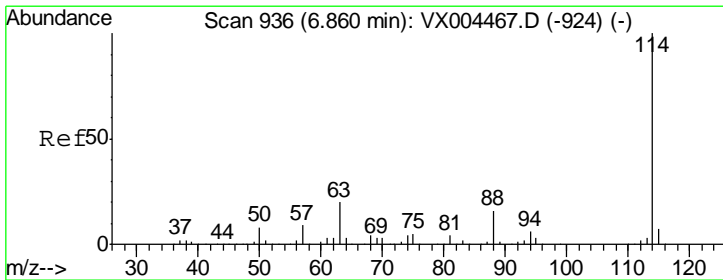
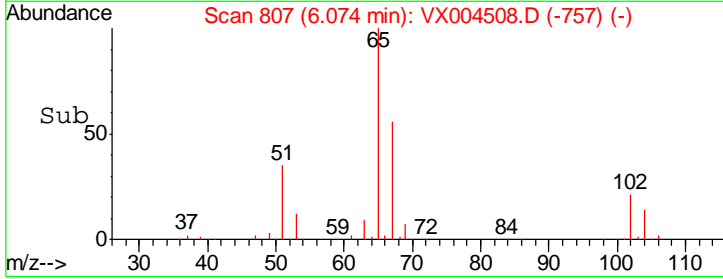
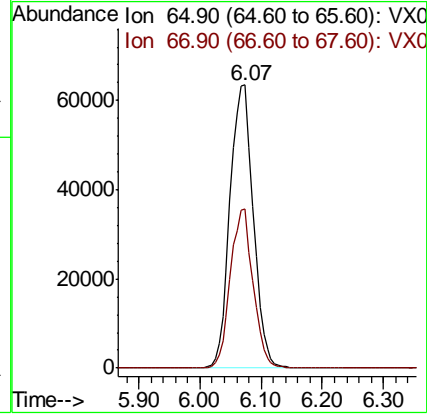
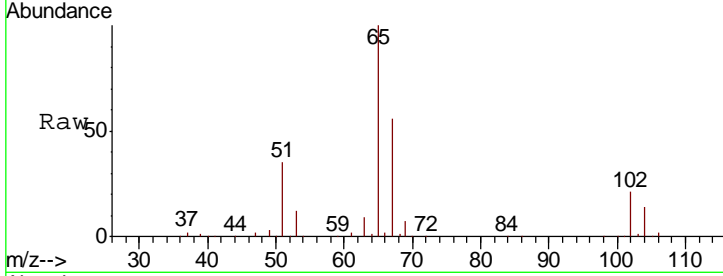




#33
 1,2-Dichloroethane-d4
 Concen: 51.29 ug/l
 RT: 6.07 min Scan# 807
 Delta R.T. 0.01 min
 Lab File: VX004508.D
 Acq: 13 Sep 2018 11:33

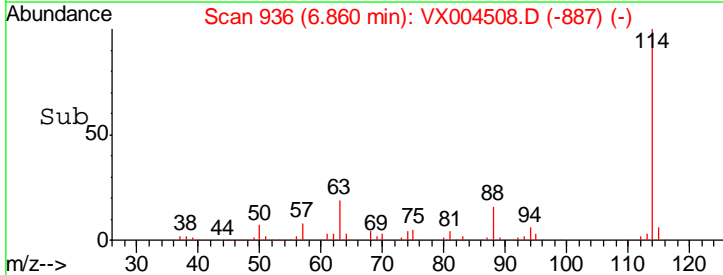
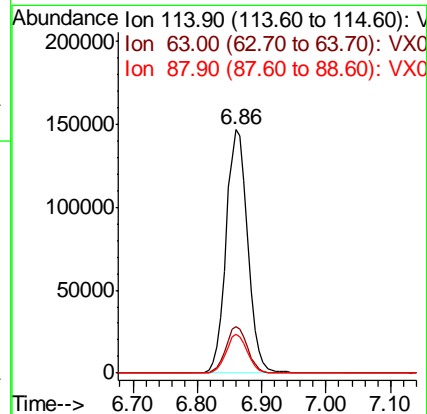
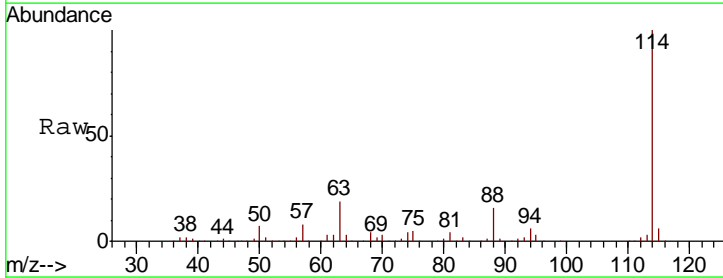
Instrument :
 MSVOA_X
 ClientSampled :
 VX0913WBL01

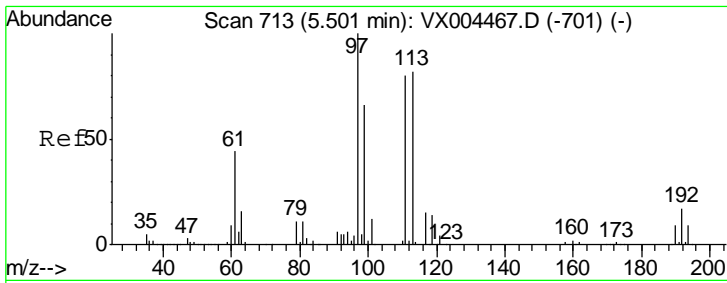
Tgt Ion: 65 Resp: 166680
 Ion Ratio Lower Upper
 65 100
 67 54.6 0.0 106.8



#34
 1,4-Difluorobenzene
 Concen: 50.00 ug/l
 RT: 6.86 min Scan# 936
 Delta R.T. -0.00 min
 Lab File: VX004508.D
 Acq: 13 Sep 2018 11:33

Tgt Ion: 114 Resp: 349681
 Ion Ratio Lower Upper
 114 100
 63 19.3 0.0 39.0
 88 16.2 0.0 30.4

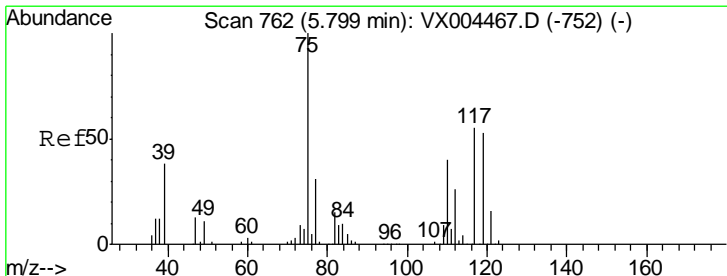
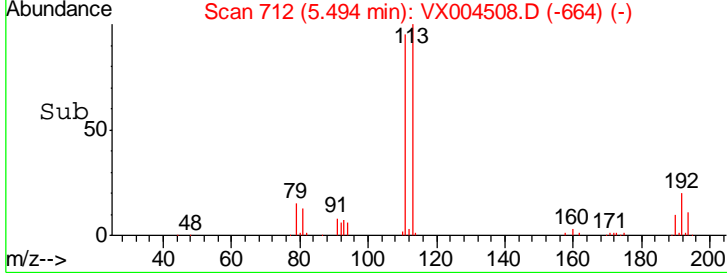
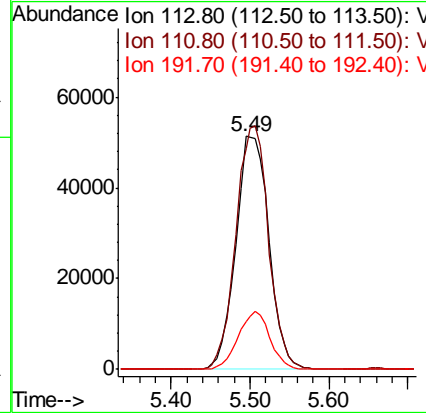
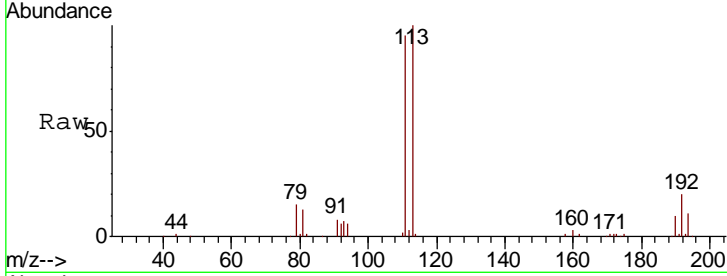




#35
 Dibromofluoromethane
 Concen: 47.17 ug/l
 RT: 5.49 min Scan# 712
 Delta R.T. -0.01 min
 Lab File: VX004508.D
 Acq: 13 Sep 2018 11:33

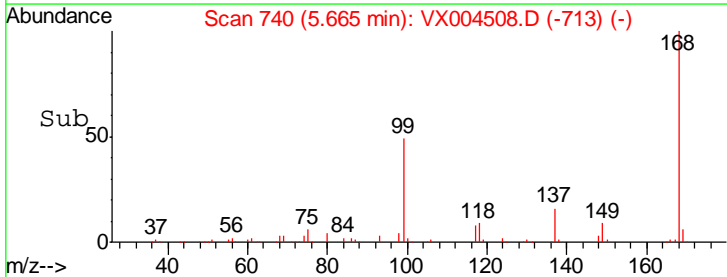
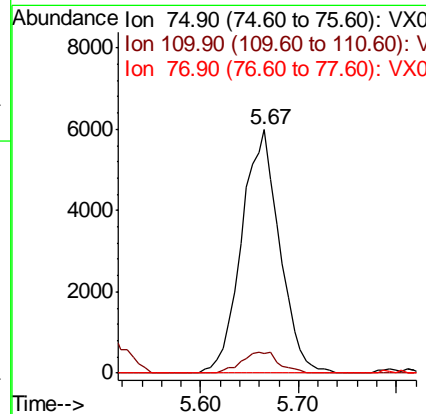
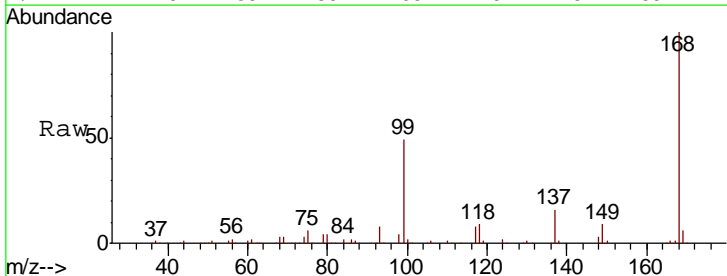
Instrument :
 MSVOA_X
ClientSampled :
 VX0913WBL01

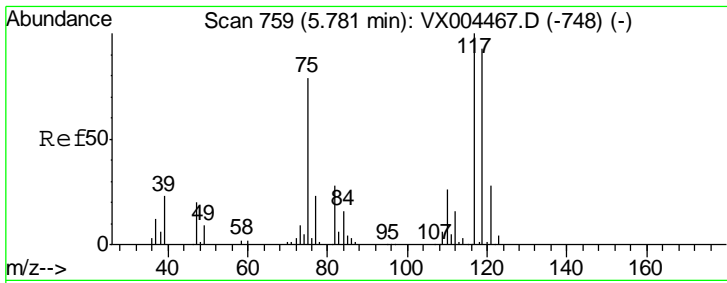
Tgt Ion	Resp	Lower	Upper
113	150952		
111	102.3	82.4	123.6
192	23.6	19.4	29.2



#36
 1,1-Dichloropropene
 Concen: 3.79 ug/l
 RT: 5.67 min Scan# 740
 Delta R.T. -0.13 min
 Lab File: VX004508.D
 Acq: 13 Sep 2018 11:33

Tgt Ion	Resp	Lower	Upper
75	16110		
110	8.3	18.0	54.0#
77	0.0	24.6	36.8#

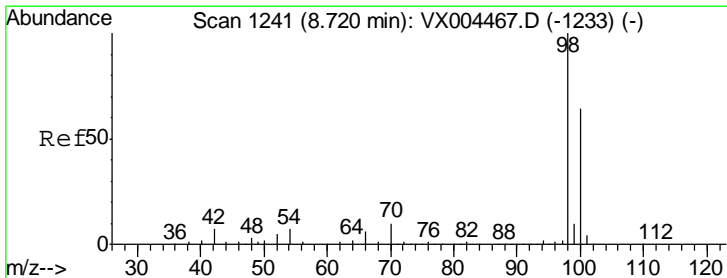
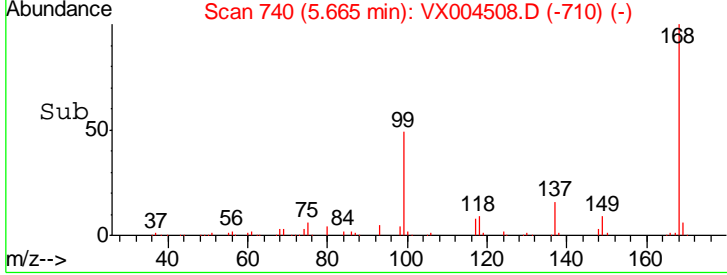
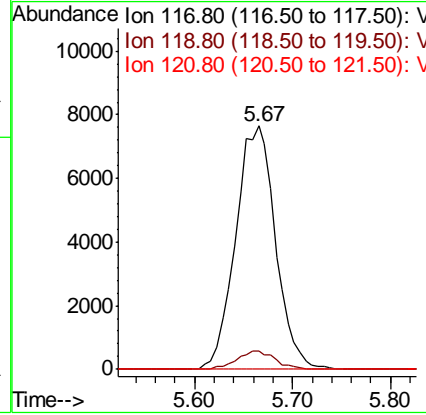
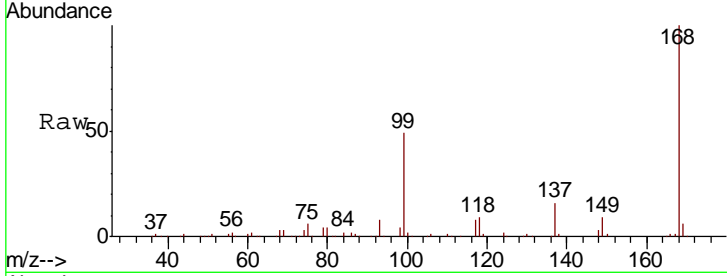




#38
 Carbon Tetrachloride
 Concen: 5.21 ug/l
 RT: 5.67 min Scan# 740
 Delta R.T. -0.12 min
 Lab File: VX004508.D
 Acq: 13 Sep 2018 11:33

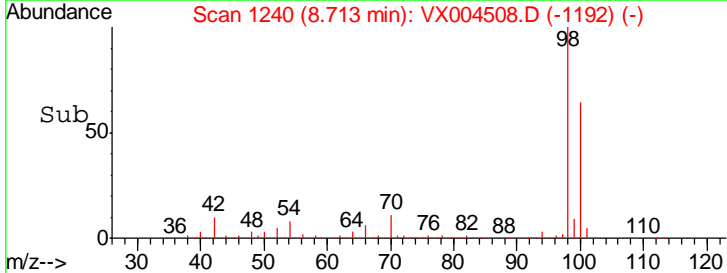
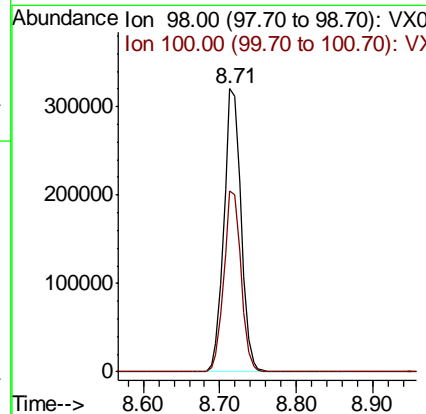
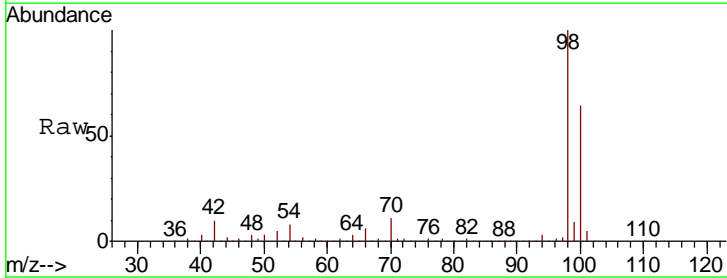
Instrument :
 MSVOA_X
ClientSampled :
 VX0913WBL01

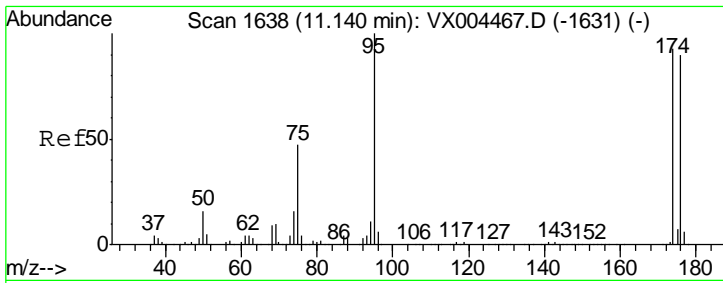
Tgt Ion	Resp	Lower	Upper
117	21621		
119	7.7	78.8	118.2#
121	0.0	24.9	37.3#



#50
 Toluene-d8
 Concen: 46.34 ug/l
 RT: 8.71 min Scan# 1240
 Delta R.T. -0.01 min
 Lab File: VX004508.D
 Acq: 13 Sep 2018 11:33

Tgt Ion	Resp	Lower	Upper
98	497278		
100	64.0	52.9	79.3

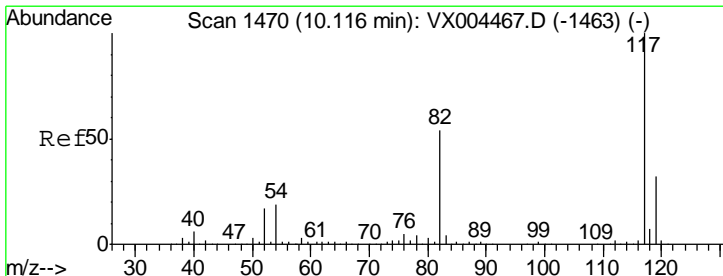
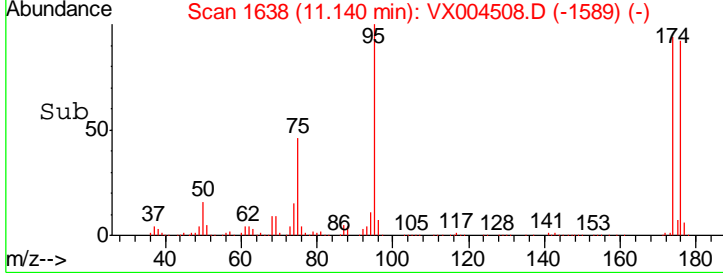
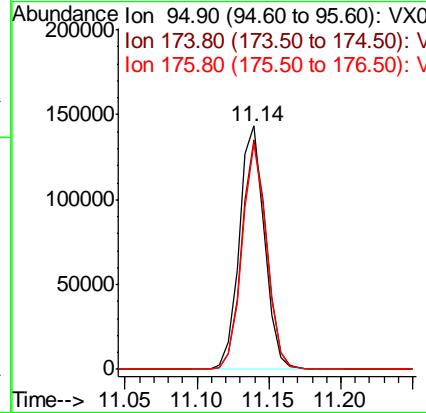
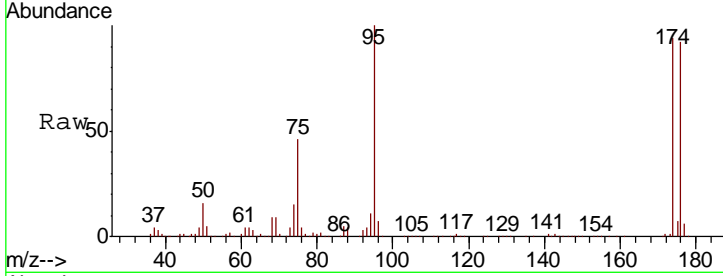




#62
 4-Bromofluorobenzene
 Concen: 45.76 ug/l
 RT: 11.14 min Scan# 1638
 Delta R.T. -0.00 min
 Lab File: VX004508.D
 Acq: 13 Sep 2018 11:33

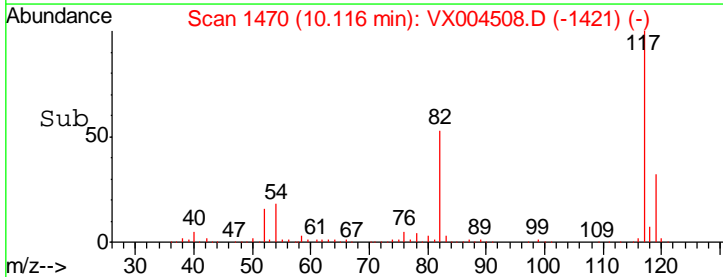
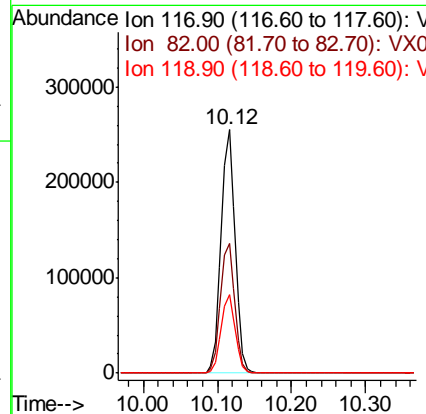
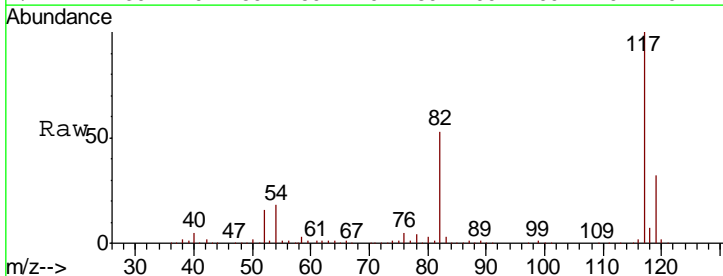
Instrument : MSVOA_X
 ClientSampled : VX0913WBL01

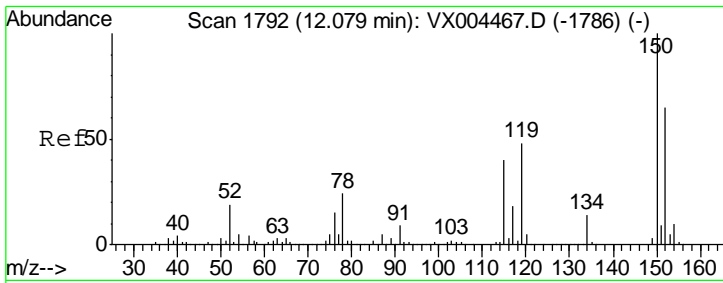
Tgt Ion	Resp	Lower	Upper
95	175266		
174	93.1	0.0	185.2
176	89.6	0.0	178.6



#63
 Chlorobenzene-d5
 Concen: 50.00 ug/l
 RT: 10.12 min Scan# 1470
 Delta R.T. -0.00 min
 Lab File: VX004508.D
 Acq: 13 Sep 2018 11:33

Tgt Ion	Resp	Lower	Upper
117	331059		
82	53.1	47.8	71.6
119	32.2	29.3	43.9

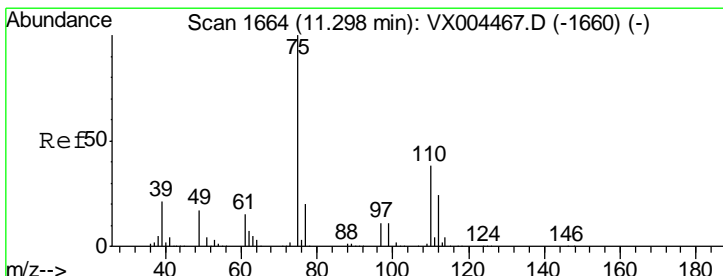
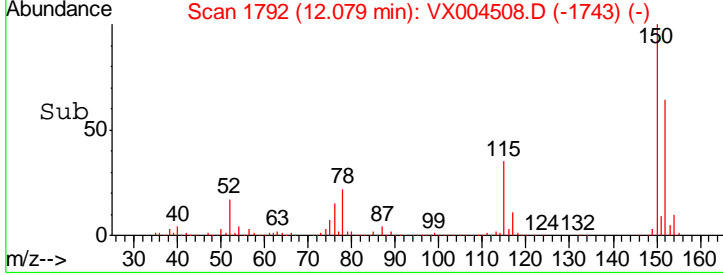
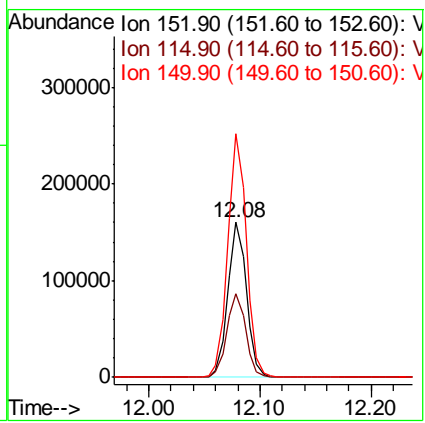
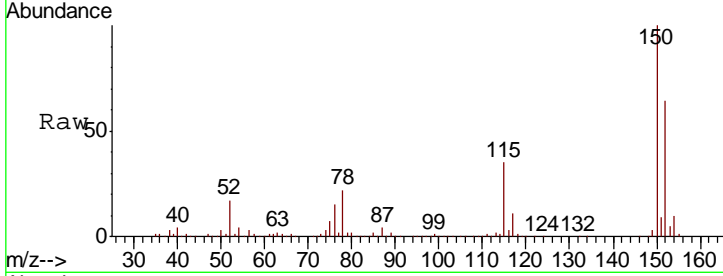




#72
 1,4-Dichlorobenzene-d4
 Concen: 50.00 ug/l
 RT: 12.08 min Scan# 1792
 Delta R.T. -0.00 min
 Lab File: VX004508.D
 Acq: 13 Sep 2018 11:33

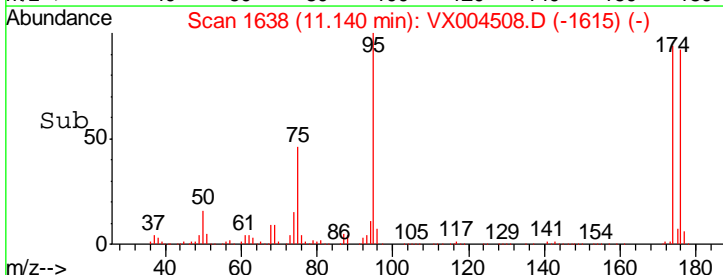
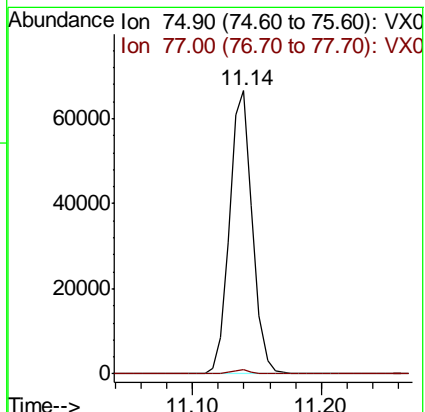
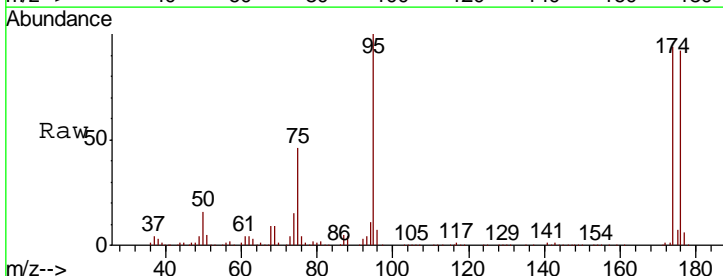
Instrument : MSVOA_X
 ClientSampled : VX0913WBL01

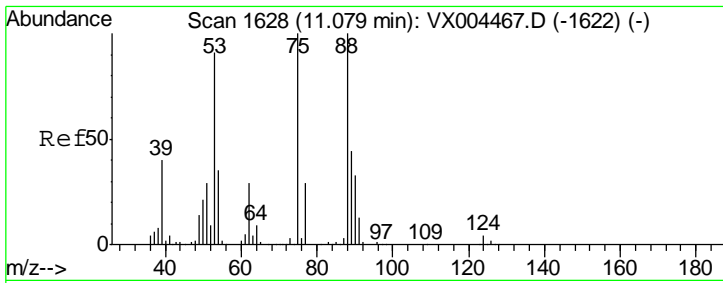
Tgt Ion	Resp	Lower	Upper
152	185348		
115	54.8	39.0	117.0
150	157.0	0.0	351.0



#76
 1,2,3-Trichloropropane
 Concen: 22.20 ug/l
 RT: 11.14 min Scan# 1638
 Delta R.T. -0.16 min
 Lab File: VX004508.D
 Acq: 13 Sep 2018 11:33

Tgt Ion	Resp	Lower	Upper
75	82777		
77	1.4	20.2	60.6

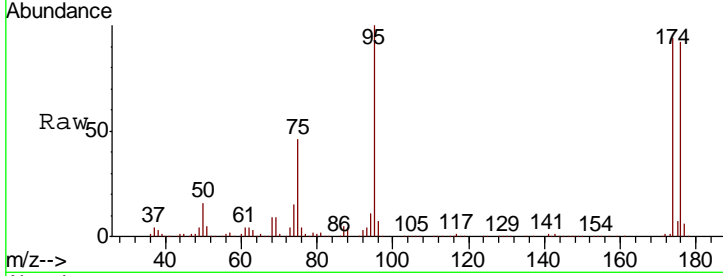




#81
 trans-1,4-Dichloro-2-butene
 Concen: 70.76 ug/l
 RT: 11.14 min Scan# 1638
 Delta R.T. 0.06 min
 Lab File: VX004508.D
 Acq: 13 Sep 2018 11:33

Instrument :
 MSVOA_X
 ClientSampled :
 VX0913WBL01

Tot Ion	Resp	Lower	Upper
75	82777		
75	100		
53	0.2	80.1	120.1#
89	0.0	37.2	55.8#



Abundance Ion 74.90 (74.60 to 75.60): VX0
 Ion 53.00 (52.70 to 53.70): VX0
 Ion 88.90 (88.60 to 89.60): VX0

