

Data Path : Z:\VOASRV\HPCHEM1\MSVOA X\DATA\VX091418\
 Data File : VX004547.D
 Acq On : 14 Sep 2018 18:27
 Operator : JC/MD
 Sample : J4913-05
 Misc : 5.0mL/MSVOA X/WATER
 ALS Vial : 19 Sample Multiplier: 1

Instrument :
 MSVOA_X
 ClientSampleId :
 BPSI-TT-MW30312-20180912

Quant Time: Sep 15 04:43:17 2018
 Quant Method : Z:\VOASRV\HPCHEM1\MSVOA_X\METHOD\82X091118W.M
 Quant Title : SW846 8260
 QLast Update : Wed Sep 12 02:17:23 2018
 Response via : Initial Calibration

Internal Standards	R.T.	QIon	Response	Conc	Units	Dev(Min)
1) Pentafluorobenzene	5.66	168	282818	50.00	ug/l	0.00
34) 1,4-Difluorobenzene	6.87	114	396859	50.00	ug/l	0.00
63) Chlorobenzene-d5	10.12	117	356076	50.00	ug/l	0.00
72) 1,4-Dichlorobenzene-d4	12.08	152	193652	50.00	ug/l	0.00

System Monitoring Compounds

33) 1,2-Dichloroethane-d4	6.07	65	169677	46.53	ug/l	0.00
Spiked Amount	50.000		Recovery	=	93.06%	
35) Dibromofluoromethane	5.51	113	159622	43.95	ug/l	0.00
Spiked Amount	50.000		Recovery	=	87.90%	
50) Toluene-d8	8.72	98	549101	45.09	ug/l	0.00
Spiked Amount	50.000		Recovery	=	90.18%	
62) 4-Bromofluorobenzene	11.14	95	188790	43.43	ug/l	0.00
Spiked Amount	50.000		Recovery	=	86.86%	

Target Compounds

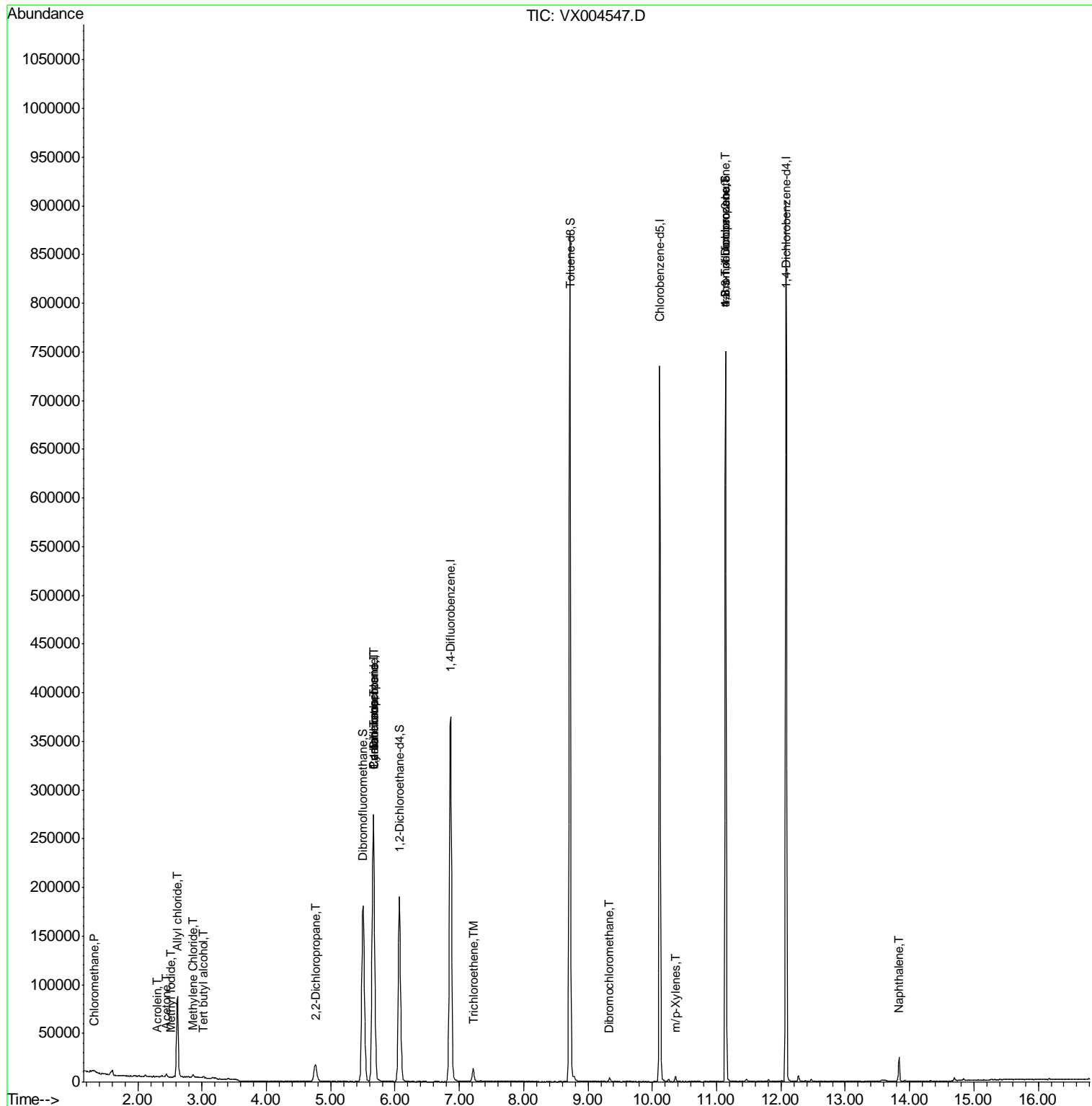
Target Compounds	R.T.	QIon	Response	Conc	Units	Qvalue
3) Chloromethane	1.32	50	780	0.21	ug/l	# 79
5) Bromomethane	1.65	94	531	Below	Cal	91
10) Methyl Iodide	2.51	142	221	4.31	ug/l	# 53
11) Tert butyl alcohol	3.02	59	1118	1.28	ug/l	# 72
13) Acrolein	2.29	56	116	0.34	ug/l	# 68
14) Allyl chloride	2.62	41	7825	1.29	ug/l	# 67
16) Acetone	2.45	43	3208	1.80	ug/l	95
20) Methylene Chloride	2.85	84	1255	0.34	ug/l	88
26) 2,2-Dichloropropane	4.76	77	1636	0.39	ug/l	# 52
31) Cyclohexane	5.66	56	4286	0.81	ug/l	# 1
36) 1,1-Dichloropropene	5.66	75	18047	3.75	ug/l	# 49
38) Carbon Tetrachloride	5.67	117	24436	5.19	ug/l	# 15
44) Trichloroethene	7.21	130	5547	1.49	ug/l	88
60) Dibromochloromethane	9.33	129	688	0.20	ug/l	# 11
68) m/p-Xylenes	10.37	106	1382	0.25	ug/l	95
76) 1,2,3-Trichloropropane	11.14	75	88432	22.70	ug/l	# 37
81) trans-1,4-Dichloro-2-buten	11.14	75	88432	72.35	ug/l	# 10
95) Naphthalene	13.83	128	17978	1.36	ug/l	99

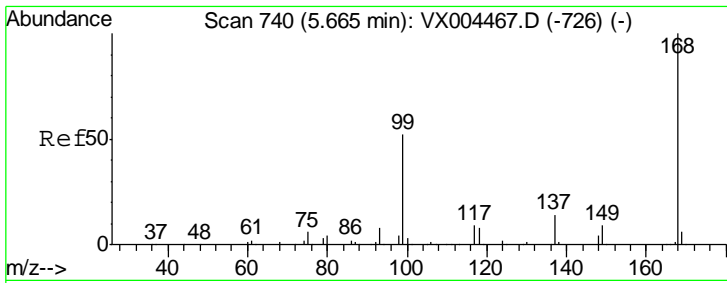
(#) = qualifier out of range (m) = manual integration (+) = signals summed

Data Path : Z:\VOASRV\HPCHEM1\MSVOA X\DATA\VX091418\
 Data File : VX004547.D
 Acq On : 14 Sep 2018 18:27
 Operator : JC/MD
 Sample : J4913-05
 Misc : 5.0mL/MSVOA X/WATER
 ALS Vial : 19 Sample Multiplier: 1

Instrument :
 MSVOA_X
 Client Sample ID :
 BPSI-TT-MW30312-20180912

Quant Time: Sep 15 04:43:17 2018
 Quant Method : Z:\VOASRV\HPCHEM1\MSVOA_X\METHOD\82X091118W.M
 Quant Title : SW846 8260
 QLast Update : Wed Sep 12 02:17:23 2018
 Response via : Initial Calibration

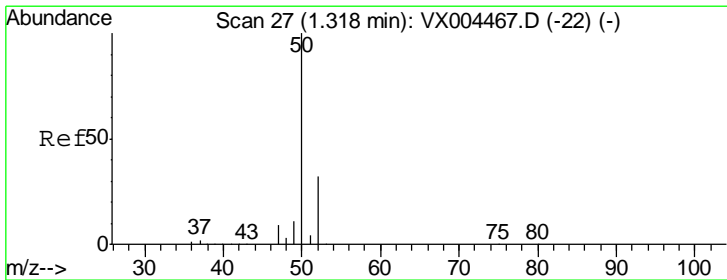
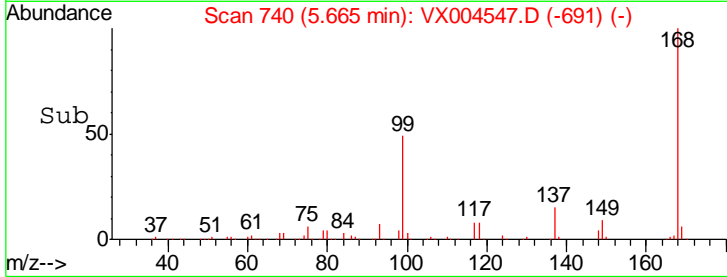
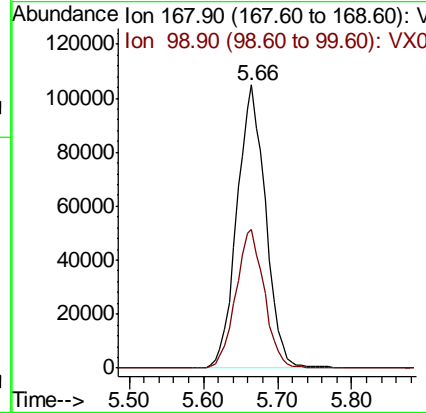
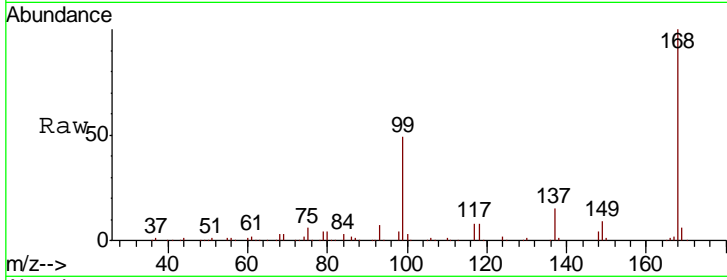




#1
 Pentafluorobenzene
 Concen: 50.00 ug/l
 RT: 5.66 min Scan# 740
 Delta R.T. -0.00 min
 Lab File: VX004547.D
 Acq: 14 Sep 2018 18:27

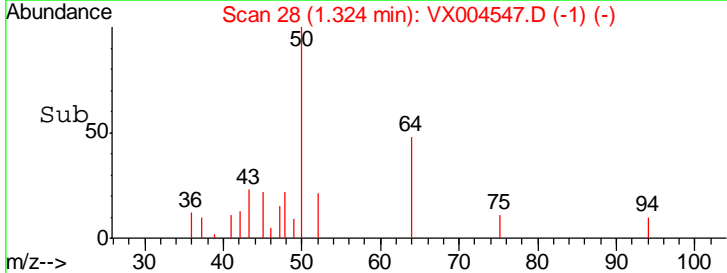
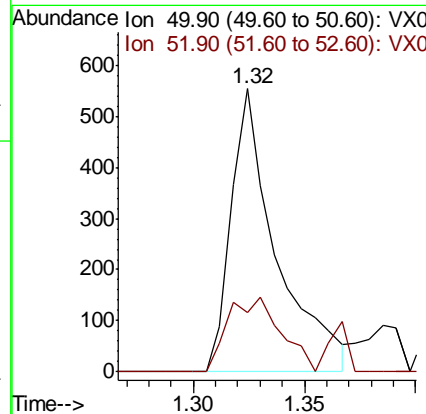
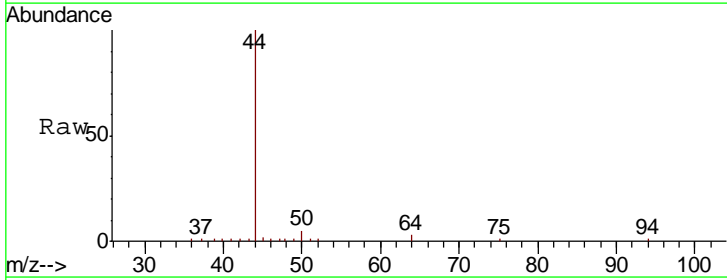
Instrument : MSVOA_X
 ClientSampleId : BPSI-TT-MW30312-20180912

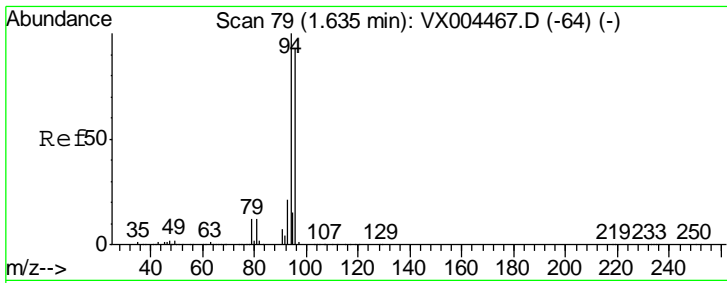
Tgt Ion: 168 Resp: 282818
 Ion Ratio Lower Upper
 168 100
 99 49.2 39.9 59.9



#3
 Chloromethane
 Concen: 0.21 ug/l
 RT: 1.32 min Scan# 28
 Delta R.T. 0.01 min
 Lab File: VX004547.D
 Acq: 14 Sep 2018 18:27

Tgt Ion: 50 Resp: 780
 Ion Ratio Lower Upper
 50 100
 52 21.1 26.2 39.2#

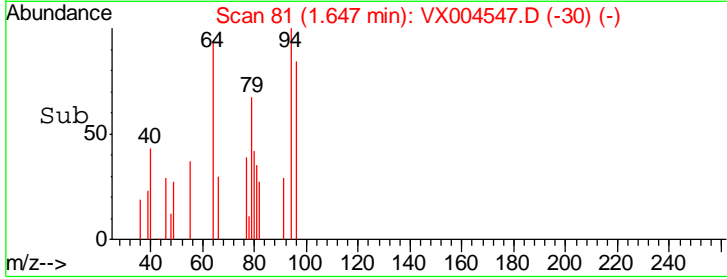
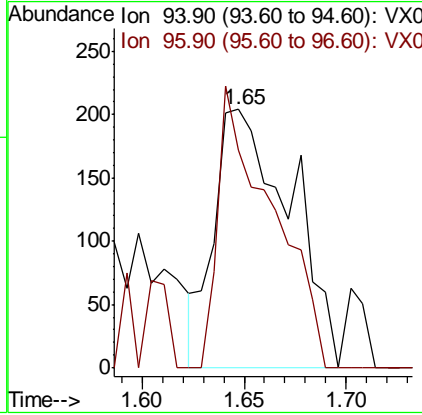
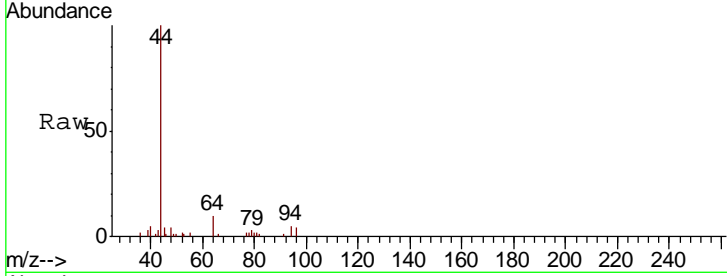




#5
 Bromomethane
 Concen: Below Cal
 RT: 1.65 min Scan# 81
 Delta R.T. 0.01 min
 Lab File: VX004547.D
 Acq: 14 Sep 2018 18:27

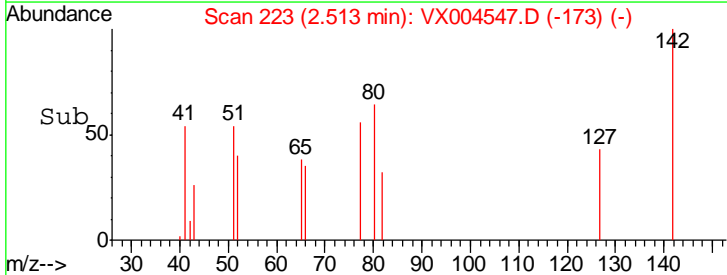
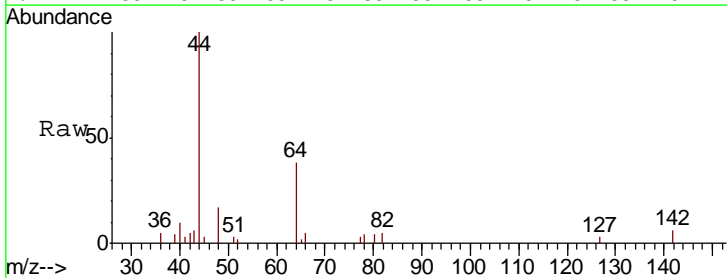
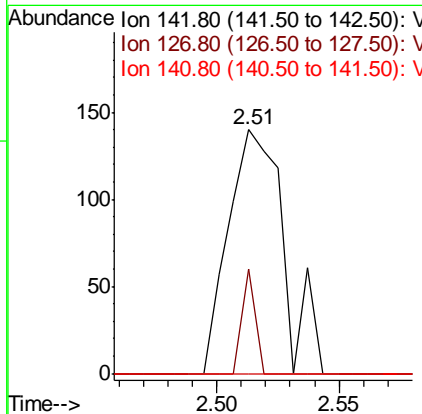
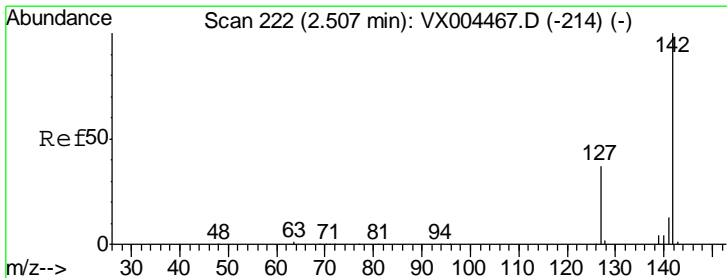
Instrument :
 MSVOA_X
 ClientSampled :
 BPSI-TT-MW30312-20180912

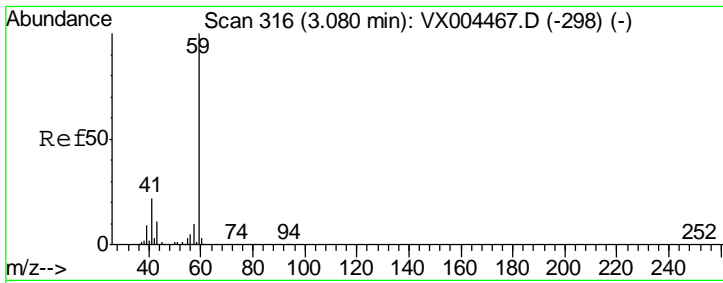
Tgt Ion: 94 Resp: 531
 Ion Ratio Lower Upper
 94 100
 96 84.3 74.5 111.7



#10
 Methyl Iodide
 Concen: 4.31 ug/l
 RT: 2.51 min Scan# 223
 Delta R.T. 0.01 min
 Lab File: VX004547.D
 Acq: 14 Sep 2018 18:27

Tgt Ion: 142 Resp: 221
 Ion Ratio Lower Upper
 142 100
 127 10.0 33.8 50.6#
 141 0.0 11.4 17.0#

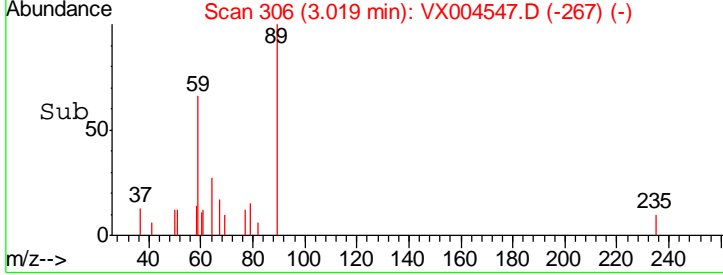
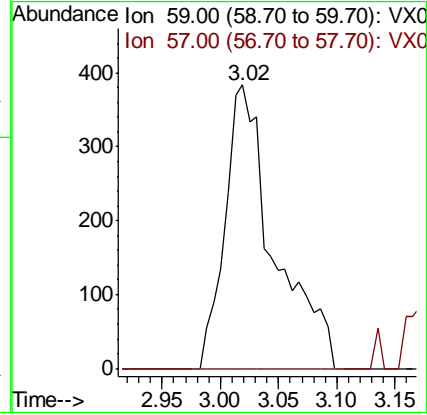
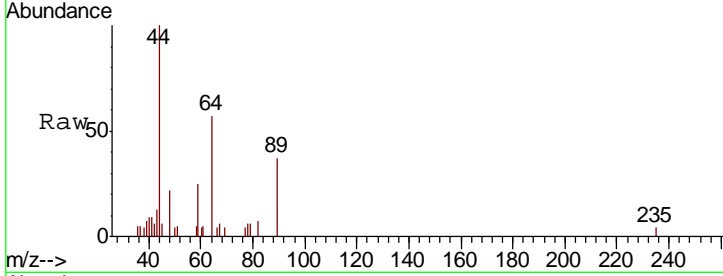




#11
 Tert butyl alcohol
 Concen: 1.28 ug/l
 RT: 3.02 min Scan# 306
 Delta R.T. -0.06 min
 Lab File: VX004547.D
 Acq: 14 Sep 2018 18:27

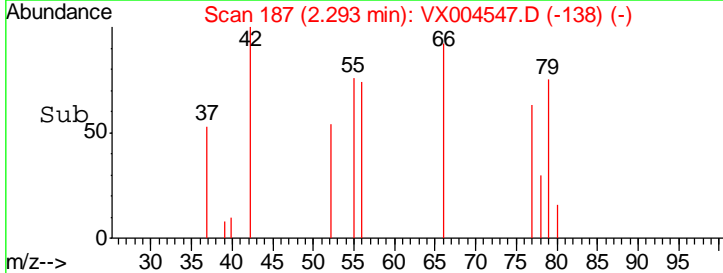
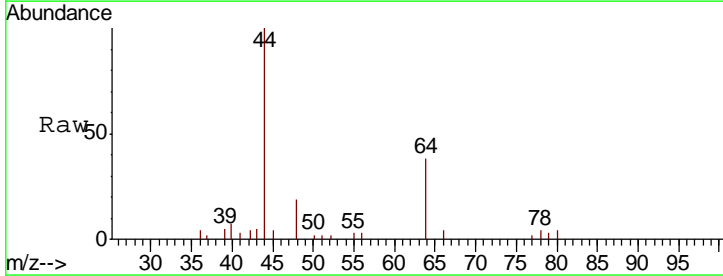
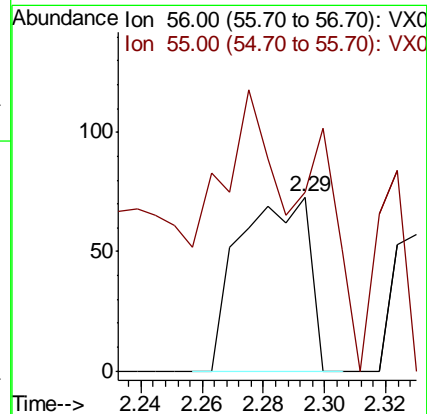
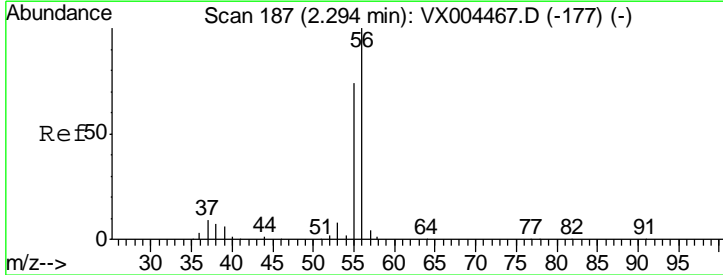
Instrument :
 MSVOA_X
ClientSampled :
 BPSI-TT-MW30312-20180912

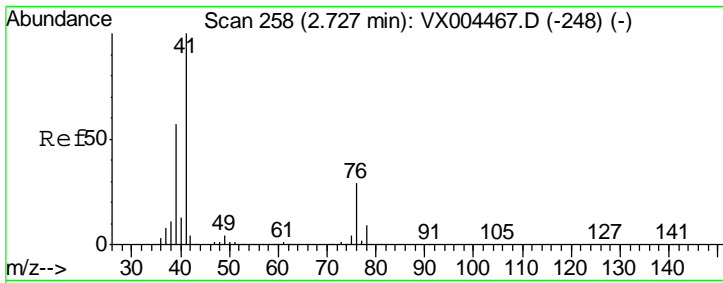
Tgt Ion: 59 Resp: 1118
 Ion Ratio Lower Upper
 59 100
 57 0.0 8.2 12.4#



#13
 Acrolein
 Concen: 0.34 ug/l
 RT: 2.29 min Scan# 187
 Delta R.T. -0.00 min
 Lab File: VX004547.D
 Acq: 14 Sep 2018 18:27

Tgt Ion: 56 Resp: 116
 Ion Ratio Lower Upper
 56 100
 55 94.0 54.7 82.1#

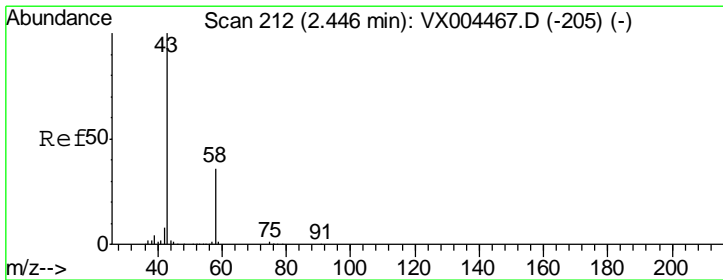
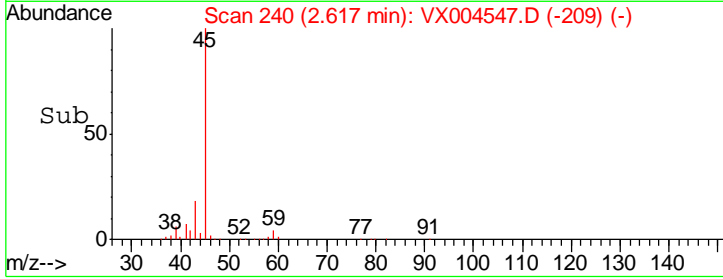
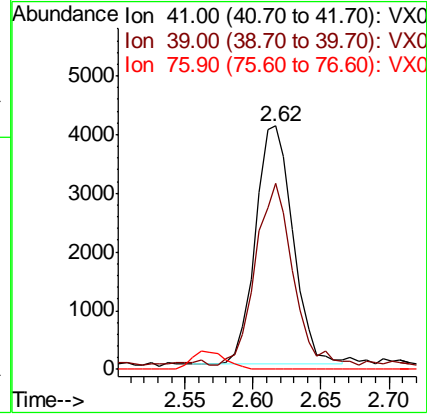
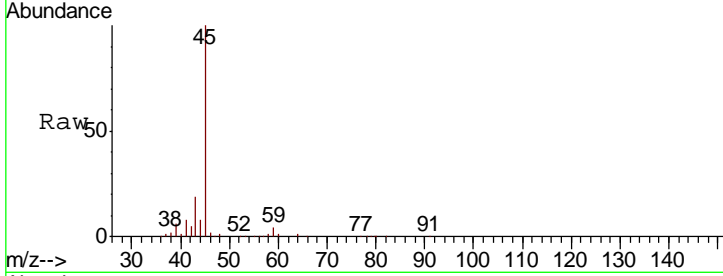




#14
 Allyl chloride
 Concen: 1.29 ug/l
 RT: 2.62 min Scan# 240
 Delta R.T. -0.11 min
 Lab File: VX004547.D
 Acq: 14 Sep 2018 18:27

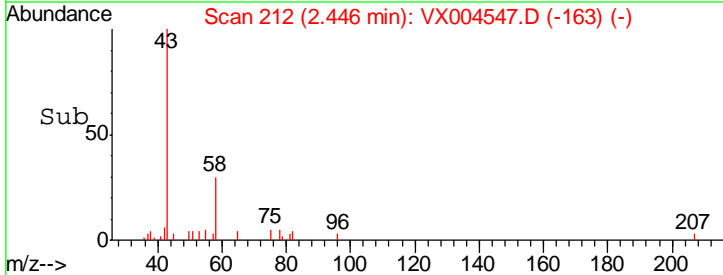
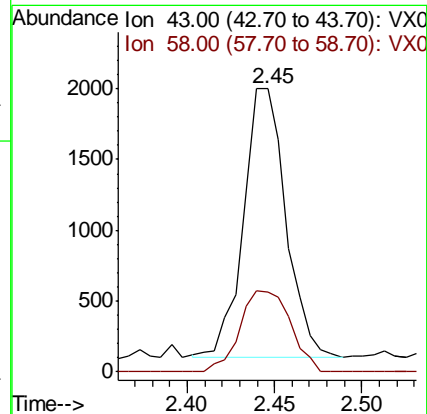
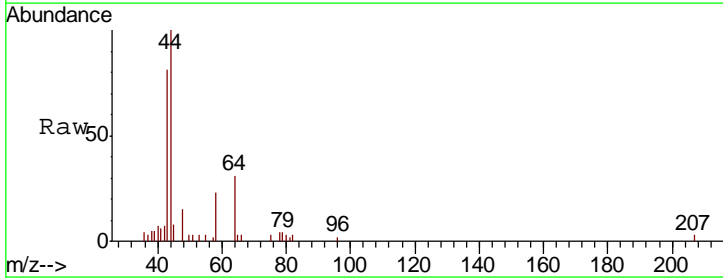
Instrument :
 MSVOA_X
ClientSampled :
 BPSI-TT-MW30312-20180912

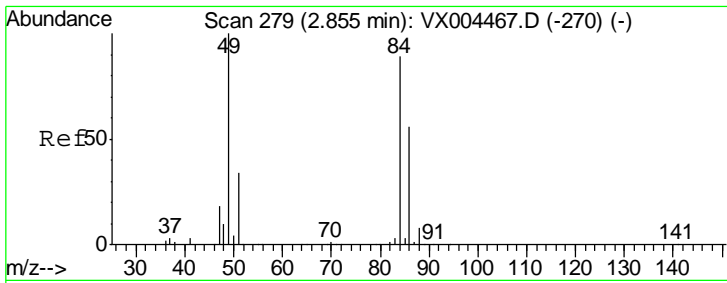
Tgt Ion	Resp	Lower	Upper
41	100		
39	76.0	48.9	73.3#
76	0.0	26.7	40.1#



#16
 Acetone
 Concen: 1.80 ug/l
 RT: 2.45 min Scan# 212
 Delta R.T. -0.00 min
 Lab File: VX004547.D
 Acq: 14 Sep 2018 18:27

Tgt Ion	Resp	Lower	Upper
43	100		
58	29.9	26.2	39.4

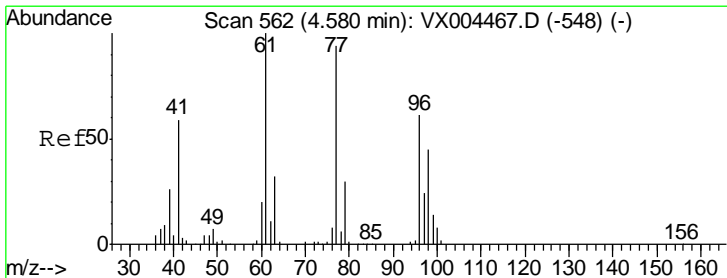
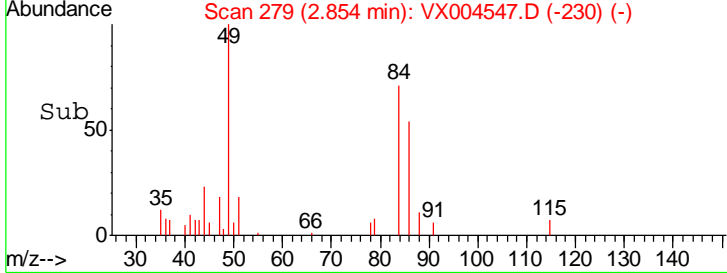
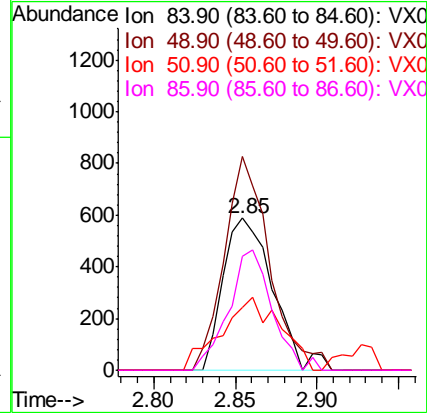
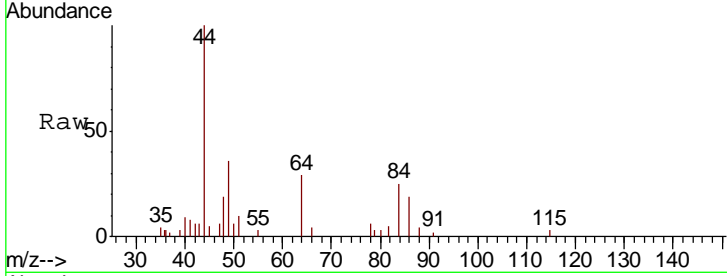




#20
 Methylene Chloride
 Concen: 0.34 ug/l
 RT: 2.85 min Scan# 279
 Delta R.T. -0.00 min
 Lab File: VX004547.D
 Acq: 14 Sep 2018 18:27

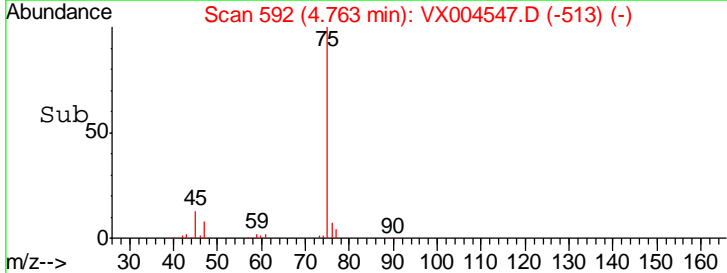
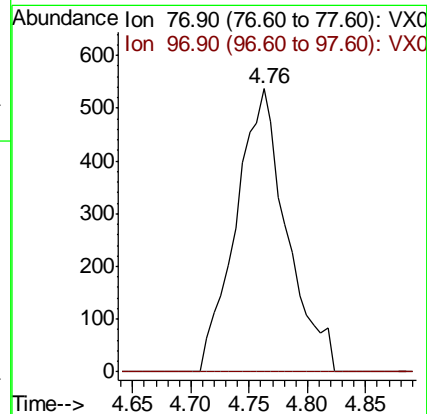
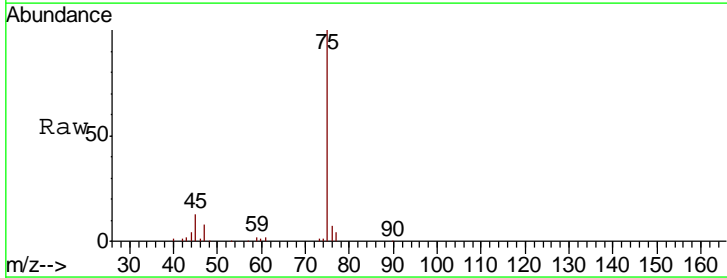
Instrument :
 MSVOA_X
 ClientSampled :
 BPSI-TT-MW30312-20180912

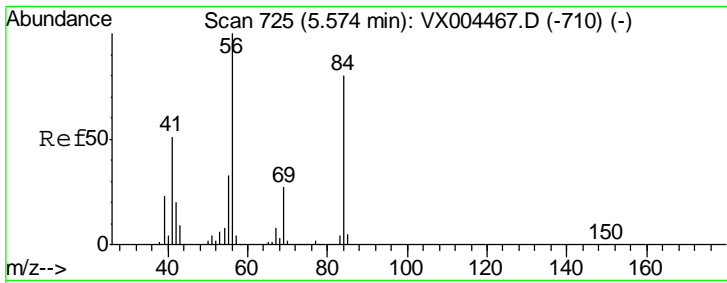
Tgt Ion	Resp	Lower	Upper
84	1255		
49	140.7	101.2	151.8
51	31.3	29.5	44.3
86	75.5	52.3	78.5



#26
 2,2-Dichloropropane
 Concen: 0.39 ug/l
 RT: 4.76 min Scan# 592
 Delta R.T. 0.18 min
 Lab File: VX004547.D
 Acq: 14 Sep 2018 18:27

Tgt Ion	Resp	Lower	Upper
77	1636		
97	0.0	11.7	35.0#

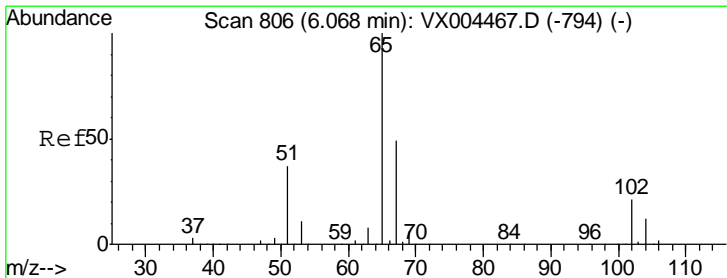
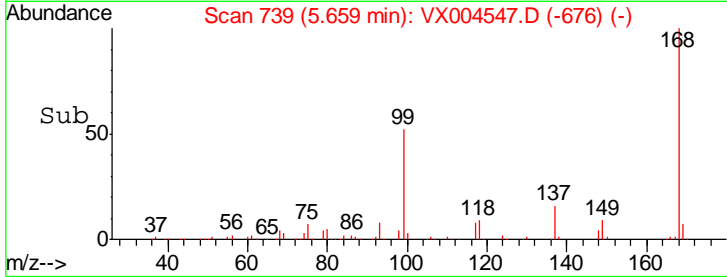
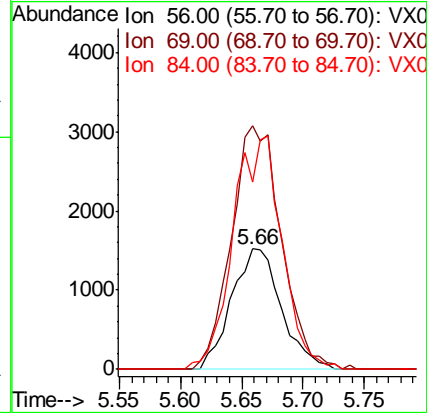
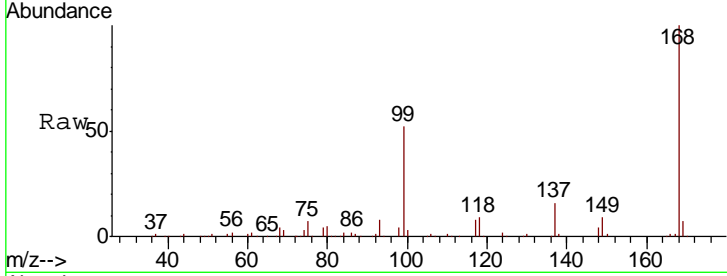




#31
 Cyclohexane
 Concen: 0.81 ug/l
 RT: 5.66 min Scan# 739
 Delta R.T. 0.08 min
 Lab File: VX004547.D
 Acq: 14 Sep 2018 18:27

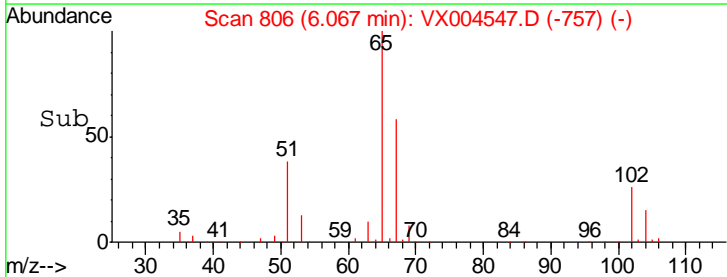
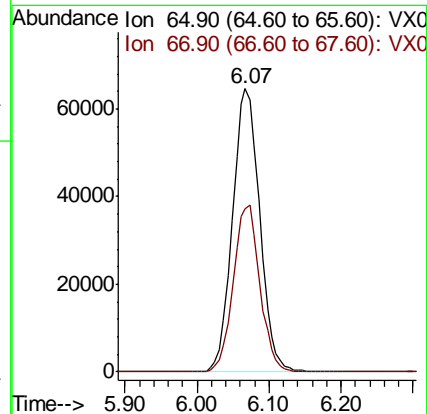
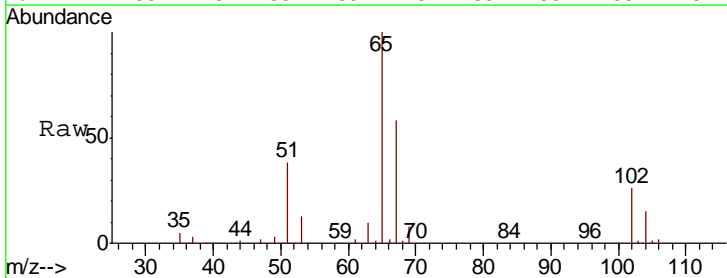
Instrument :
 MSVOA_X
 ClientSampleID :
 BPSI-TT-MW30312-20180912

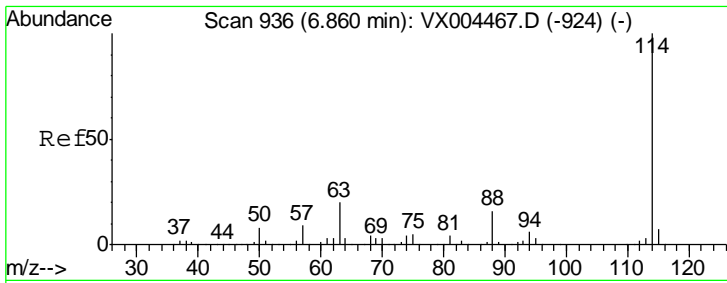
Tgt Ion	Resp	Lower	Upper
56	100		
69	202.4	25.4	38.2#
84	155.7	71.4	107.2#



#33
 1,2-Dichloroethane-d4
 Concen: 46.53 ug/l
 RT: 6.07 min Scan# 806
 Delta R.T. -0.00 min
 Lab File: VX004547.D
 Acq: 14 Sep 2018 18:27

Tgt Ion	Resp	Lower	Upper
65	100		
67	57.5	0.0	106.8

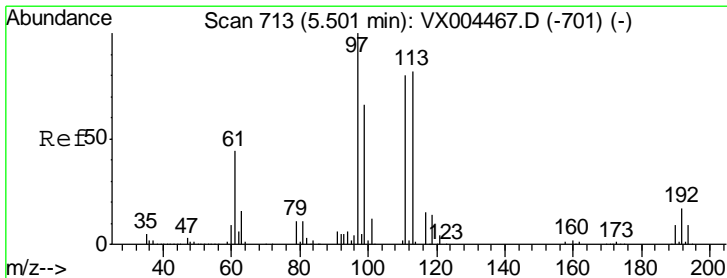
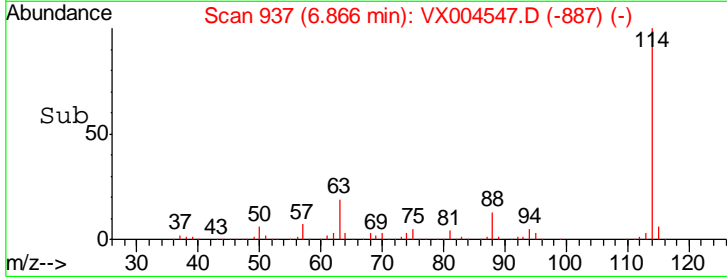
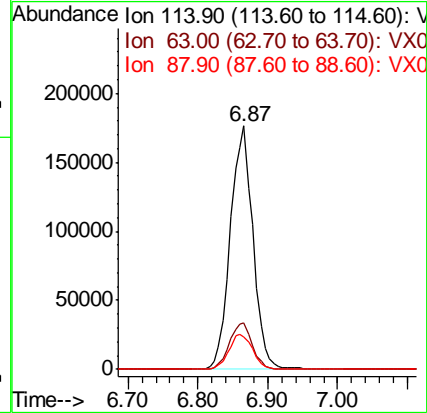
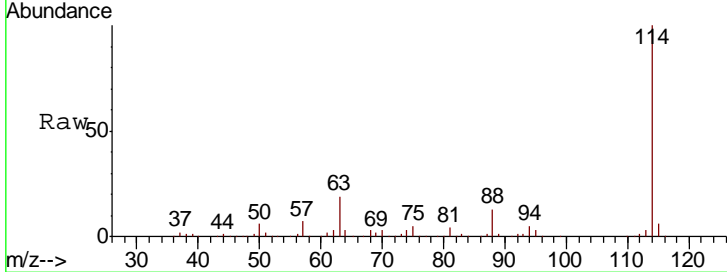




#34
 1,4-Difluorobenzene
 Concen: 50.00 ug/l
 RT: 6.87 min Scan# 937
 Delta R.T. 0.01 min
 Lab File: VX004547.D
 Acq: 14 Sep 2018 18:27

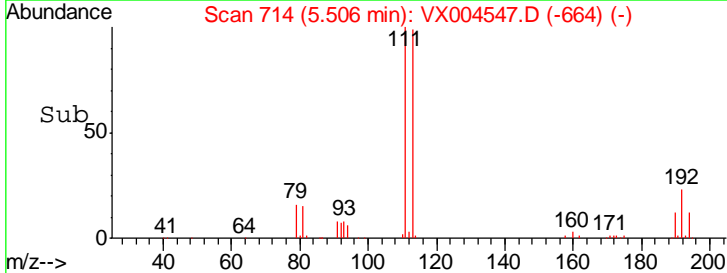
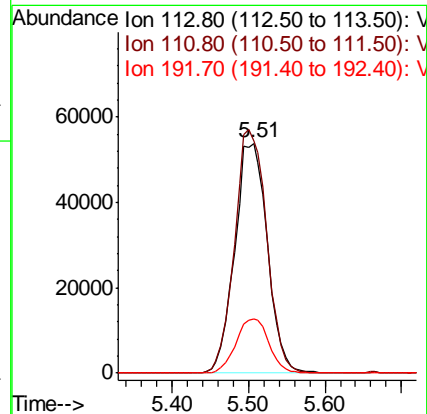
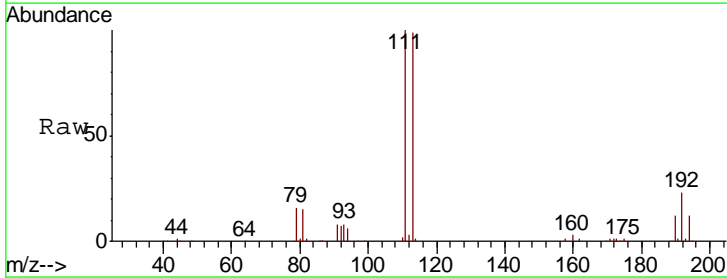
Instrument :
 MSVOA_X
 ClientSampleID :
 BPSI-TT-MW30312-20180912

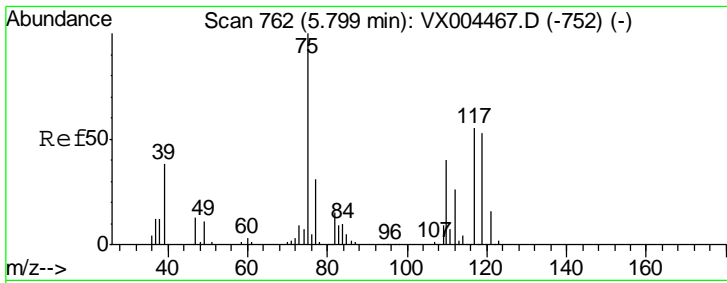
Tgt Ion	Resp	Lower	Upper
114	396859		
63	19.2	0.0	39.0
88	13.4	0.0	30.4



#35
 Dibromofluoromethane
 Concen: 43.95 ug/l
 RT: 5.51 min Scan# 714
 Delta R.T. 0.01 min
 Lab File: VX004547.D
 Acq: 14 Sep 2018 18:27

Tgt Ion	Resp	Lower	Upper
113	159622		
111	104.1	82.4	123.6
192	23.8	19.4	29.2

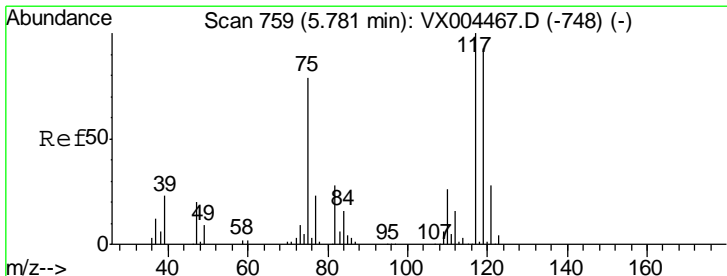
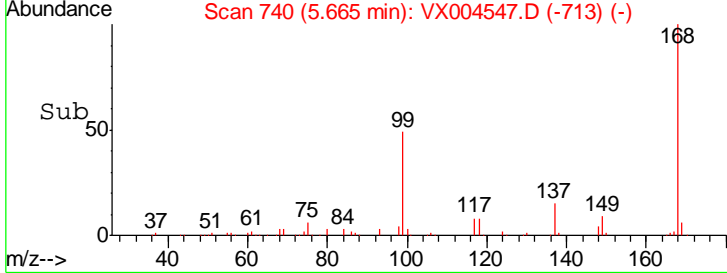
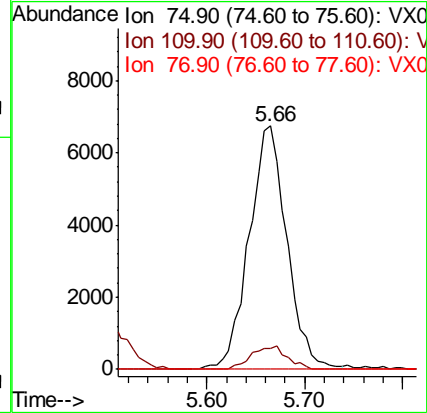
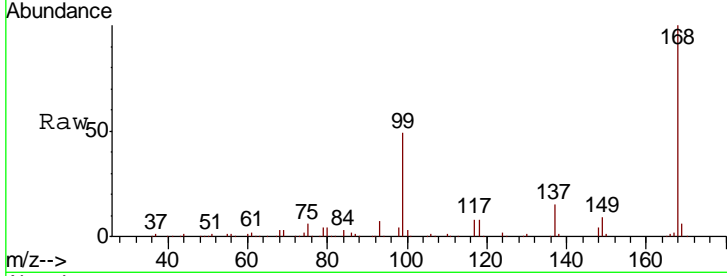




#36
 1,1-Dichloropropene
 Concen: 3.75 ug/l
 RT: 5.66 min Scan# 740
 Delta R.T. -0.13 min
 Lab File: VX004547.D
 Acq: 14 Sep 2018 18:27

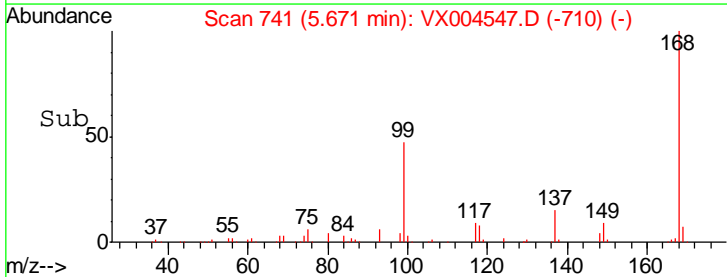
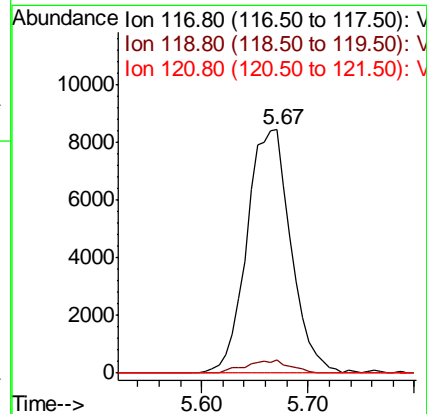
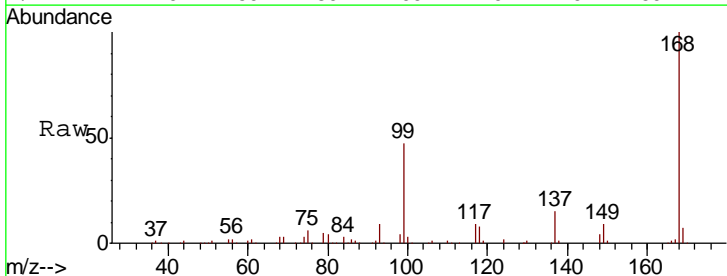
Instrument :
 MSVOA_X
 ClientSampled :
 BPSI-TT-MW30312-20180912

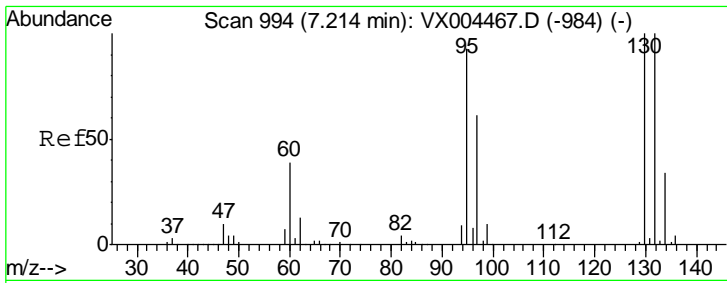
Tgt Ion	Resp	Lower	Upper
75	18047		
110	8.9	18.0	54.0#
77	0.0	24.6	36.8#



#38
 Carbon Tetrachloride
 Concen: 5.19 ug/l
 RT: 5.67 min Scan# 741
 Delta R.T. -0.11 min
 Lab File: VX004547.D
 Acq: 14 Sep 2018 18:27

Tgt Ion	Resp	Lower	Upper
117	24436		
119	5.4	78.8	118.2#
121	0.0	24.9	37.3#

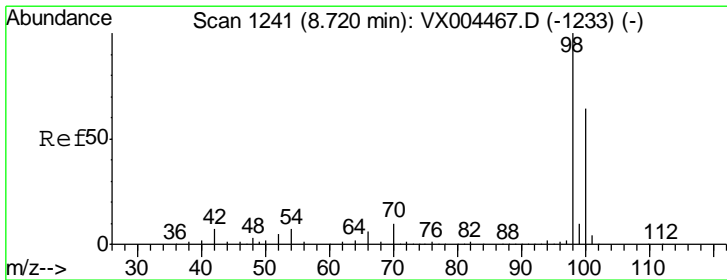
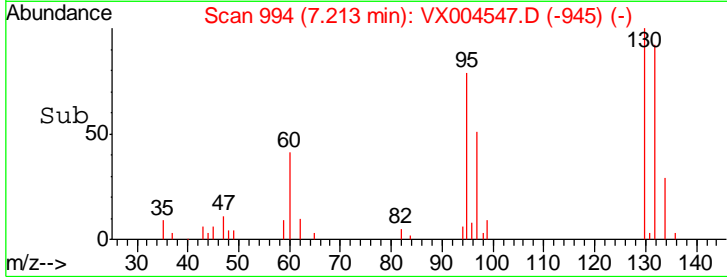
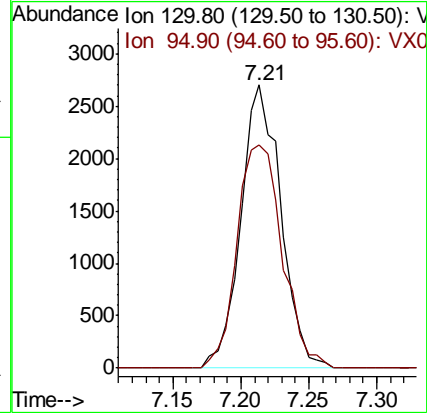
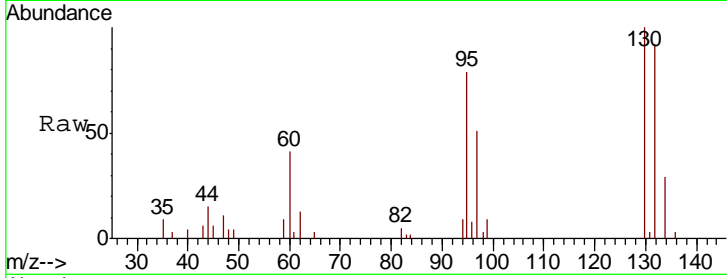




#44
 Trichloroethene
 Concen: 1.49 ug/l
 RT: 7.21 min Scan# 994
 Delta R.T. -0.00 min
 Lab File: VX004547.D
 Acq: 14 Sep 2018 18:27

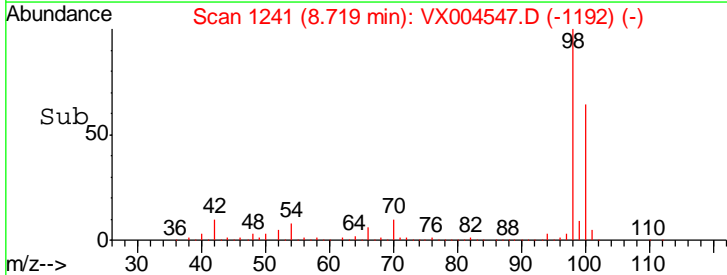
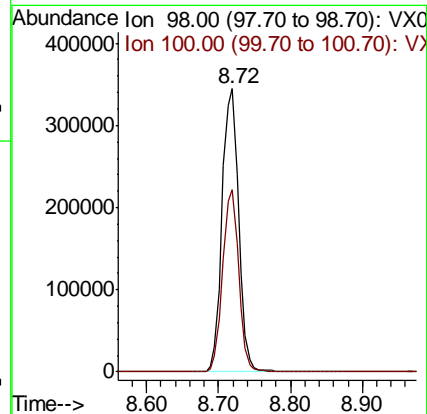
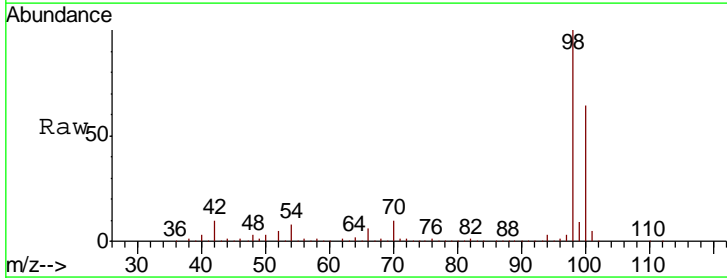
Instrument :
 MSVOA_X
 ClientSampled :
 BPSI-TT-MW30312-20180912

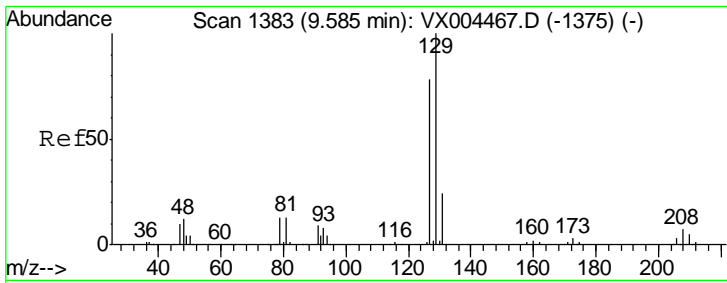
Tgt Ion: 130 Resp: 5547
 Ion Ratio Lower Upper
 130 100
 95 79.0 0.0 181.6



#50
 Toluene-d8
 Concen: 45.09 ug/l
 RT: 8.72 min Scan# 1241
 Delta R.T. -0.00 min
 Lab File: VX004547.D
 Acq: 14 Sep 2018 18:27

Tgt Ion: 98 Resp: 549101
 Ion Ratio Lower Upper
 98 100
 100 62.5 52.9 79.3

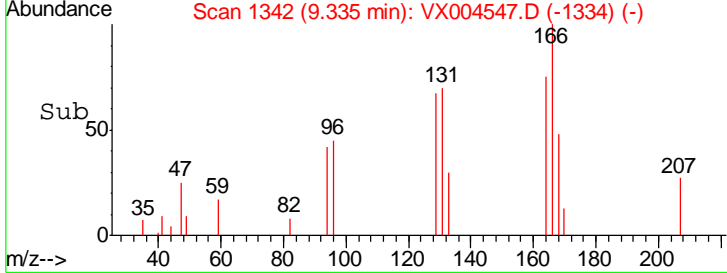
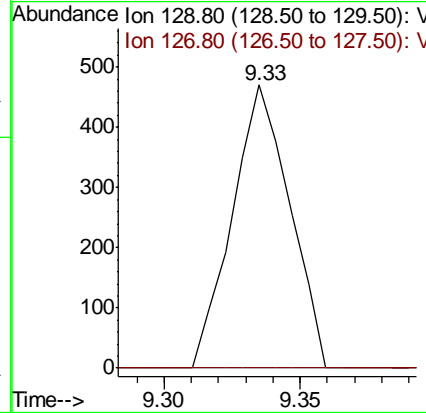
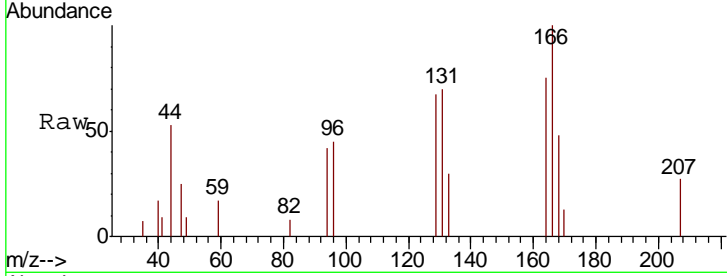




#60
 Dibromochloromethane
 Concen: 0.20 ug/l
 RT: 9.33 min Scan# 1342
 Delta R.T. -0.25 min
 Lab File: VX004547.D
 Acq: 14 Sep 2018 18:27

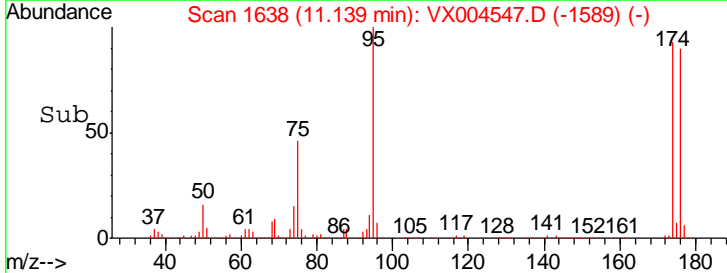
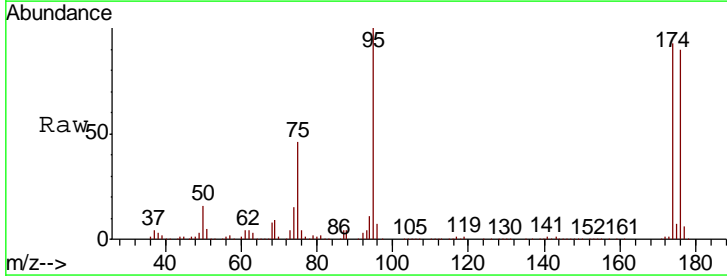
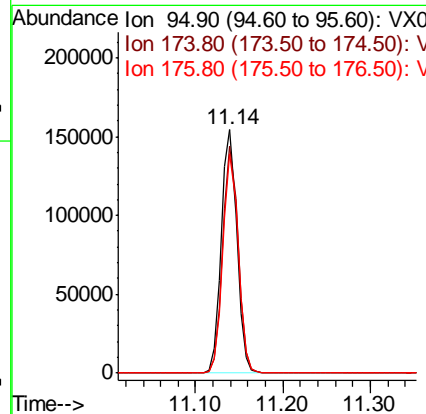
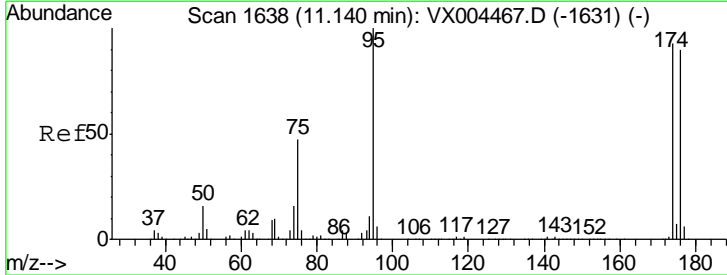
Instrument :
 MSVOA_X
 ClientSampleId :
 BPSI-TT-MW30312-20180912

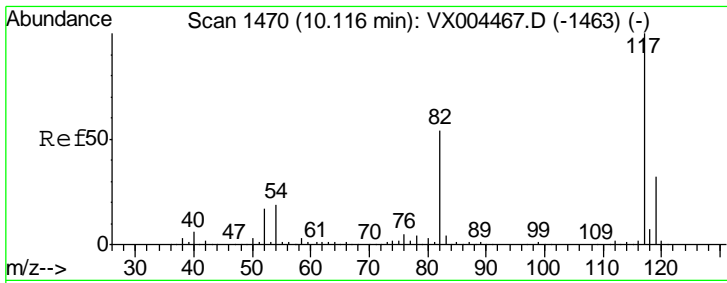
Tgt Ion: 129 Resp: 688
 Ion Ratio Lower Upper
 129 100
 127 0.0 38.5 115.5#



#62
 4-Bromofluorobenzene
 Concen: 43.43 ug/l
 RT: 11.14 min Scan# 1638
 Delta R.T. -0.00 min
 Lab File: VX004547.D
 Acq: 14 Sep 2018 18:27

Tgt Ion: 95 Resp: 188790
 Ion Ratio Lower Upper
 95 100
 174 92.5 0.0 185.2
 176 89.1 0.0 178.6

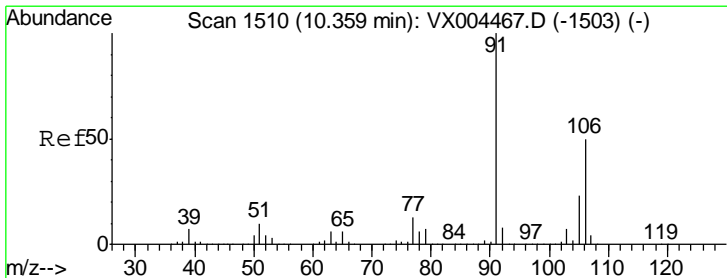
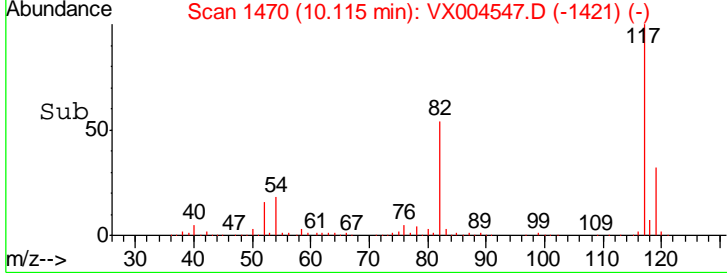
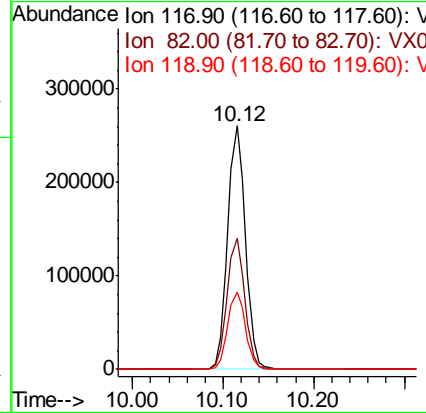
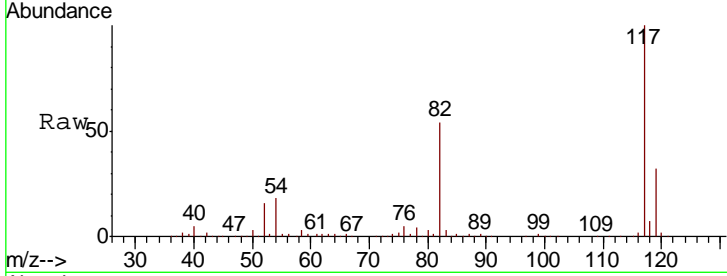




#63
 Chlorobenzene-d5
 Concen: 50.00 ug/l
 RT: 10.12 min Scan# 1470
 Delta R.T. -0.00 min
 Lab File: VX004547.D
 Acq: 14 Sep 2018 18:27

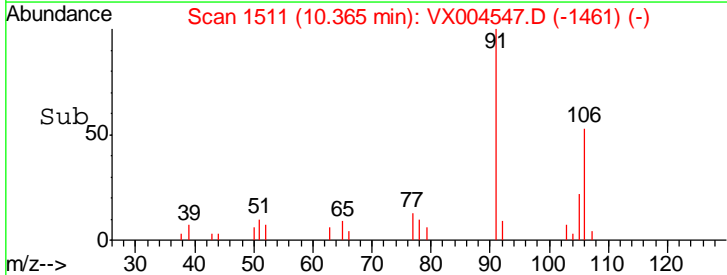
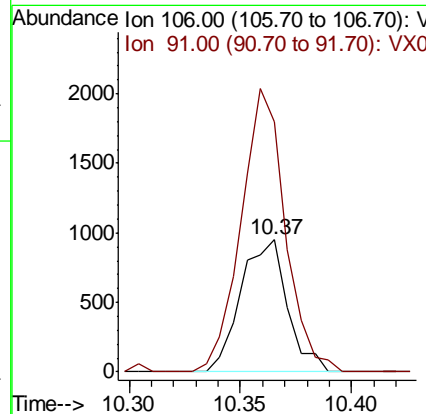
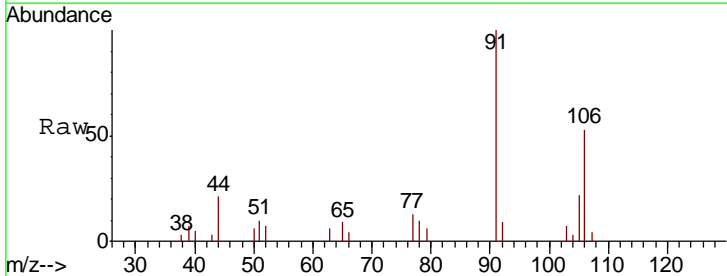
Instrument :
 MSVOA_X
 ClientSampled :
 BPSI-TT-MW30312-20180912

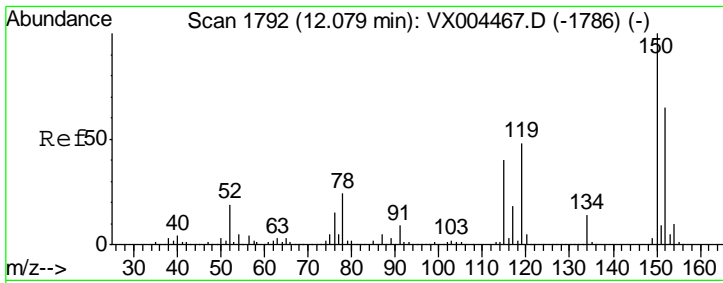
Tgt Ion	Resp	Lower	Upper
117	356076		
82	53.7	47.8	71.6
119	31.9	29.3	43.9



#68
 m/p-Xylenes
 Concen: 0.25 ug/l
 RT: 10.37 min Scan# 1511
 Delta R.T. 0.01 min
 Lab File: VX004547.D
 Acq: 14 Sep 2018 18:27

Tgt Ion	Resp	Lower	Upper
106	1382		
91	203.9	157.1	235.7

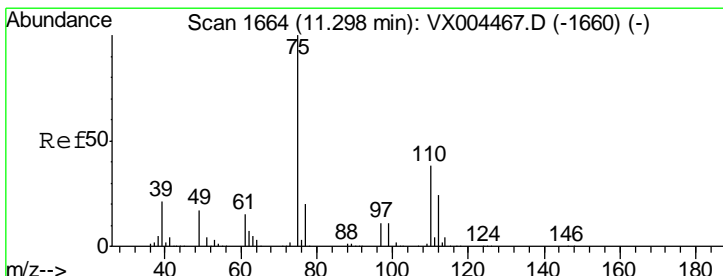
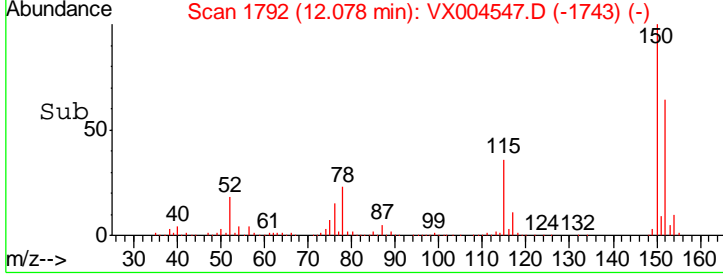
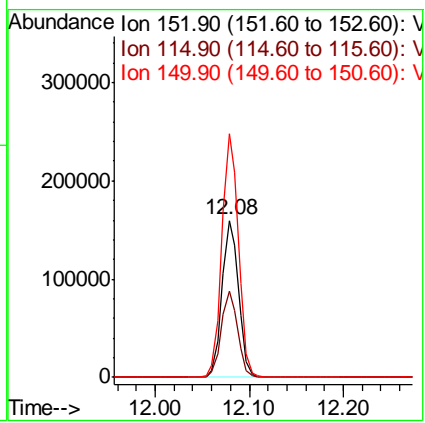
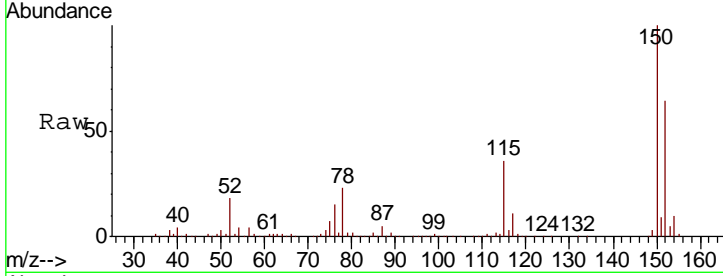




#72
 1,4-Dichlorobenzene-d4
 Concen: 50.00 ug/l
 RT: 12.08 min Scan# 1792
 Delta R.T. -0.00 min
 Lab File: VX004547.D
 Acq: 14 Sep 2018 18:27

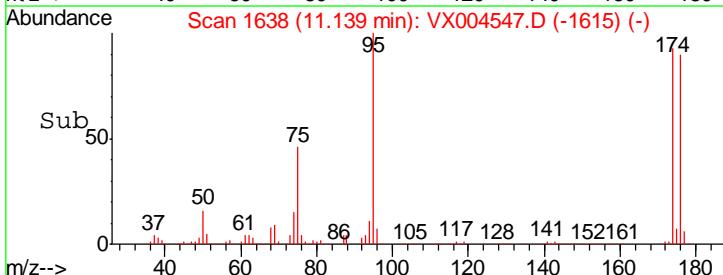
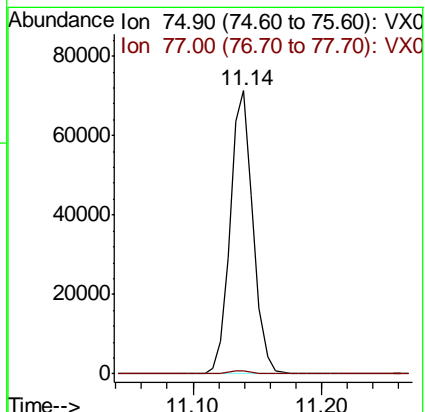
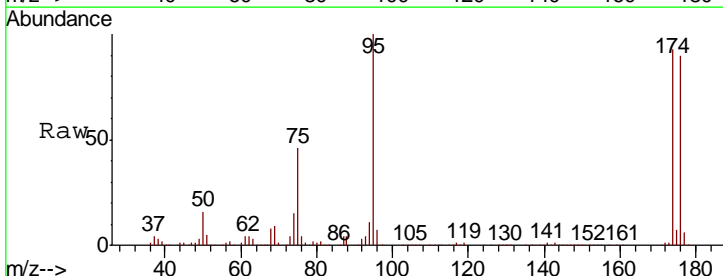
Instrument : MSVOA_X
 ClientSampled : BPSI-TT-MW30312-20180912

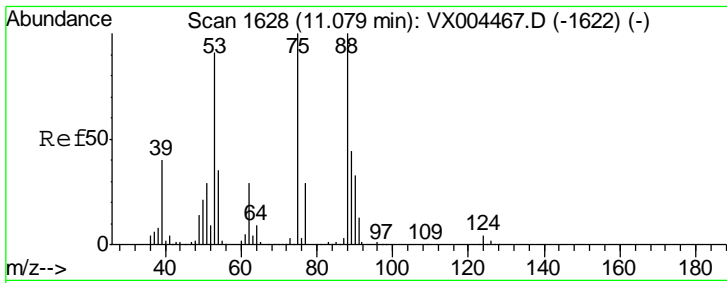
Tgt Ion	Resp	Lower	Upper
152	100		
115	54.6	39.0	117.0
150	155.6	0.0	351.0



#76
 1,2,3-Trichloropropane
 Concen: 22.70 ug/l
 RT: 11.14 min Scan# 1638
 Delta R.T. -0.16 min
 Lab File: VX004547.D
 Acq: 14 Sep 2018 18:27

Tgt Ion	Resp	Lower	Upper
75	100		
77	1.2	20.2	60.6

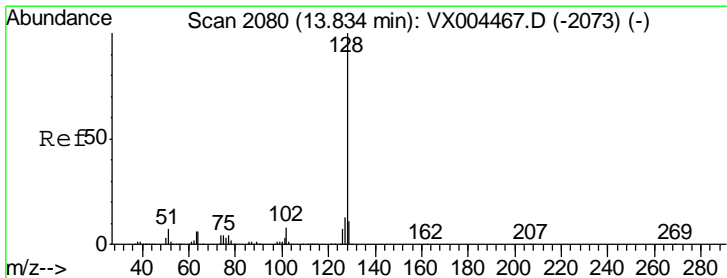
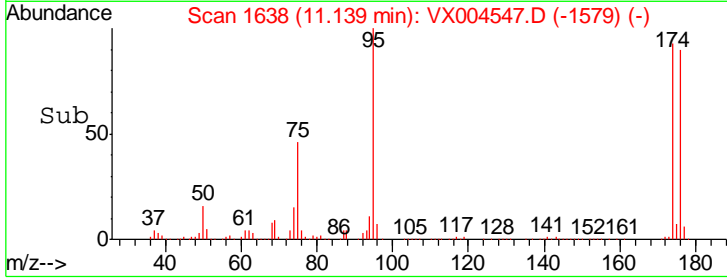
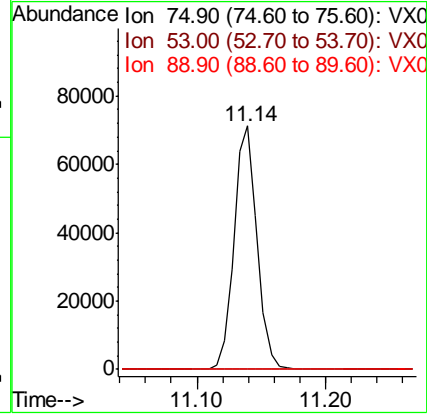
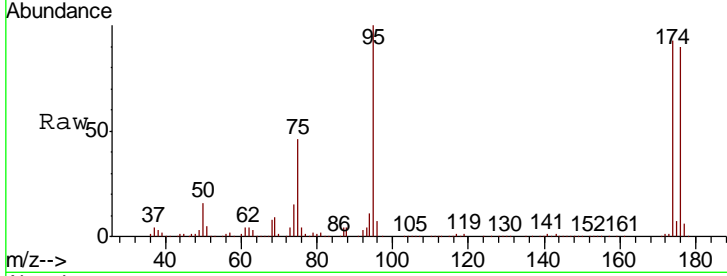




#81
 trans-1,4-Dichloro-2-butene
 Concen: 72.35 ug/l
 RT: 11.14 min Scan# 1638
 Delta R.T. 0.06 min
 Lab File: VX004547.D
 Acq: 14 Sep 2018 18:27

Instrument : MSVOA_X
 ClientSampleID : BPSI-TT-MW30312-20180912

Tgt Ion	Resp	Lower	Upper
75	100		
53	0.1	80.1	120.1#
89	0.0	37.2	55.8#



#95
 Naphthalene
 Concen: 1.36 ug/l
 RT: 13.83 min Scan# 2080
 Delta R.T. -0.00 min
 Lab File: VX004547.D
 Acq: 14 Sep 2018 18:27

Tgt Ion	Resp	Lower	Upper
128	100		
127	13.1	10.2	15.2
129	11.1	8.6	12.8

