

Data Path : Z:\voasrv\HPCHEM1\MSVOA_X\Data\VX091422\
 Data File : VX031342.D
 Acq On : 15 Sep 2022 06:46
 Operator : JC/MD
 Sample : N4579-04
 Misc : 5.0mL/MSVOA_X/WATER
 ALS Vial : 46 Sample Multiplier: 1

Instrument :
 MSVOA_X
 ClientSampleId :
 CHERRY-HILL-COMP-11

Quant Time: Sep 15 11:12:24 2022
 Quant Method : Z:\voasrv\HPCHEM1\MSVOA_X\Method\82X091422W.M
 Quant Title : SW846 8260
 QLast Update : Thu Sep 15 01:50:07 2022
 Response via : Initial Calibration

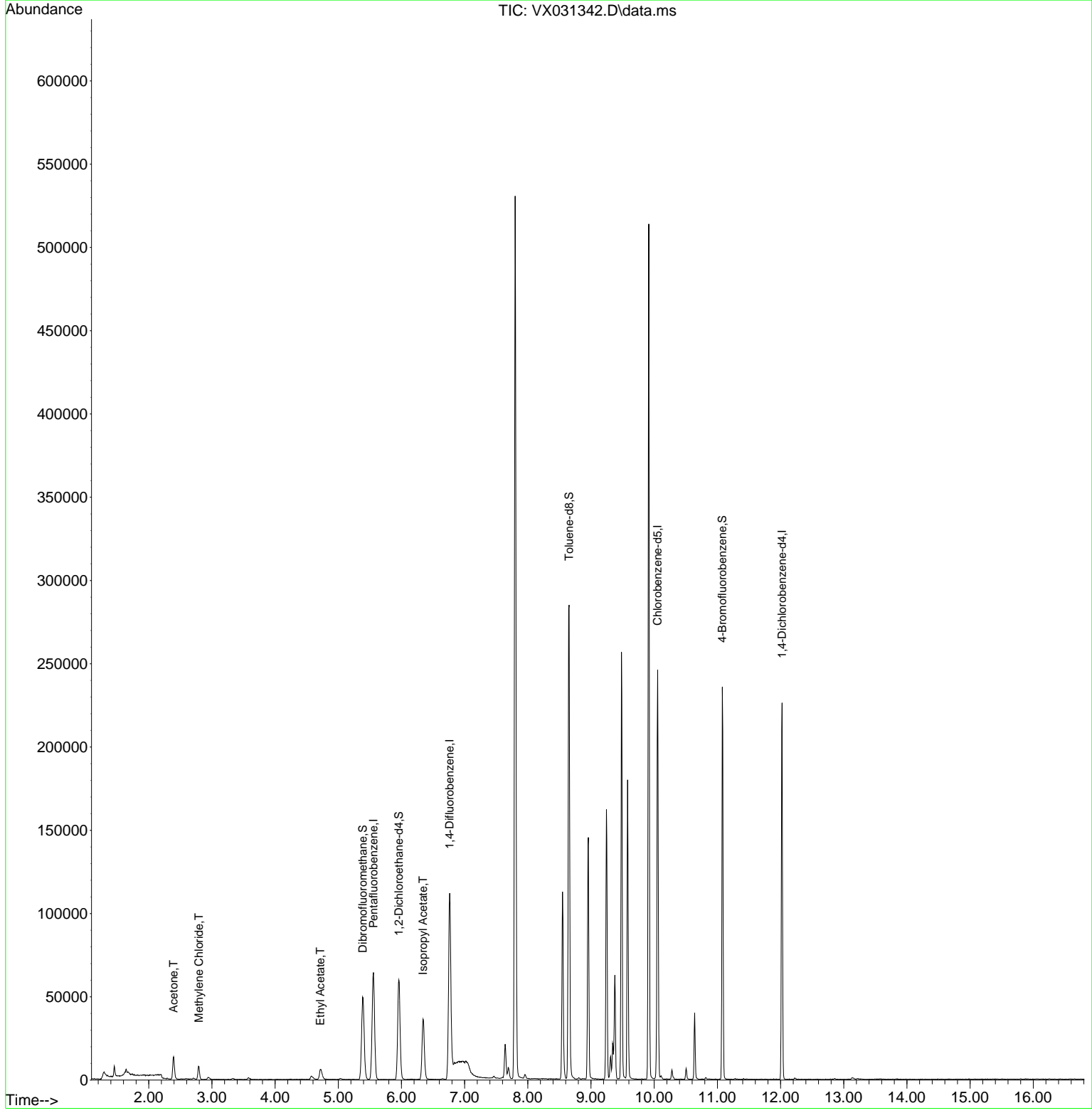
Compound	R.T.	QIon	Response	Conc	Units	Dev(Min)
Internal Standards						
1) Pentafluorobenzene	5.556	168	55533	50.000	ug/l	0.00
34) 1,4-Difluorobenzene	6.763	114	103352	50.000	ug/l	0.00
63) Chlorobenzene-d5	10.055	117	98099	50.000	ug/l	0.00
72) 1,4-Dichlorobenzene-d4	12.024	152	41780	50.000	ug/l	0.00
System Monitoring Compounds						
33) 1,2-Dichloroethane-d4	5.958	65	56709	41.604	ug/l	0.00
Spiked Amount	50.000	Range	74 - 125	Recovery	=	83.200%
35) Dibromofluoromethane	5.385	113	41295	37.171	ug/l	0.00
Spiked Amount	50.000	Range	75 - 124	Recovery	=	74.340%#
50) Toluene-d8	8.653	98	162954	39.102	ug/l	0.00
Spiked Amount	50.000	Range	86 - 113	Recovery	=	78.200%#
62) 4-Bromofluorobenzene	11.079	95	55509	36.374	ug/l	0.00
Spiked Amount	50.000	Range	83 - 123	Recovery	=	72.740%#
Target Compounds						
16) Acetone	2.392	43	17081	29.354	ug/l	97
20) Methylene Chloride	2.794	84	3369	1.369	ug/l	92
37) Ethyl Acetate	4.715	43	10928	5.469	ug/l	98
43) Isopropyl Acetate	6.342	43	52266	15.323	ug/l	97

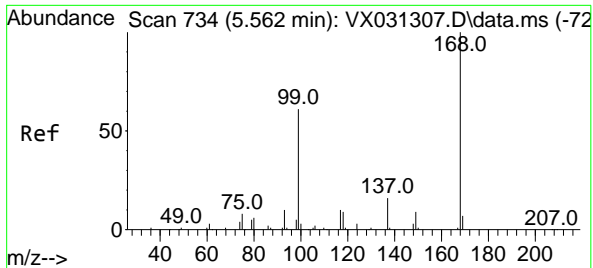
(#) = qualifier out of range (m) = manual integration (+) = signals summed

Data Path : Z:\voasrv\HPCHEM1\MSVOA_X\Data\VX091422\
 Data File : VX031342.D
 Acq On : 15 Sep 2022 06:46
 Operator : JC/MD
 Sample : N4579-04
 Misc : 5.0mL/MSVOA_X/WATER
 ALS Vial : 46 Sample Multiplier: 1

Instrument :
 MSVOA_X
ClientSampleId :
 CHERRY-HILL-COMP-11

Quant Time: Sep 15 11:12:24 2022
 Quant Method : Z:\voasrv\HPCHEM1\MSVOA_X\Method\82X091422W.M
 Quant Title : SW846 8260
 QLast Update : Thu Sep 15 01:50:07 2022
 Response via : Initial Calibration

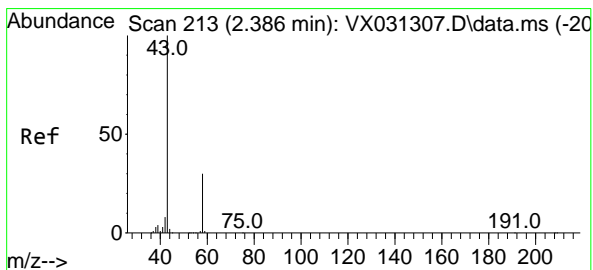
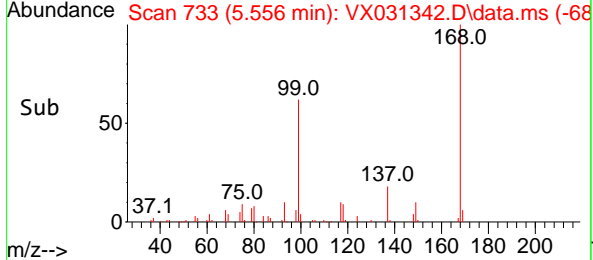
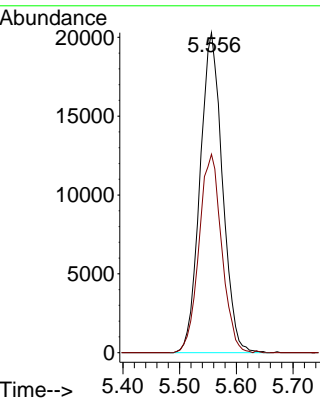
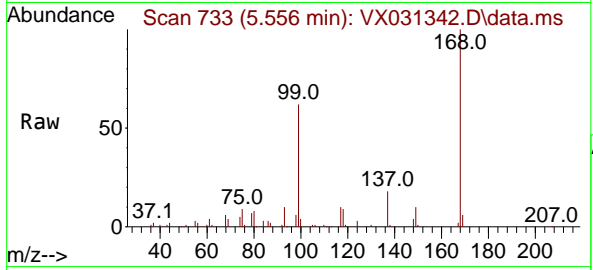




#1
 Pentafluorobenzene
 Concen: 50.000 ug/l
 RT: 5.556 min Scan# 71
 Delta R.T. -0.006 min
 Lab File: VX031342.D
 Acq: 15 Sep 2022 06:46

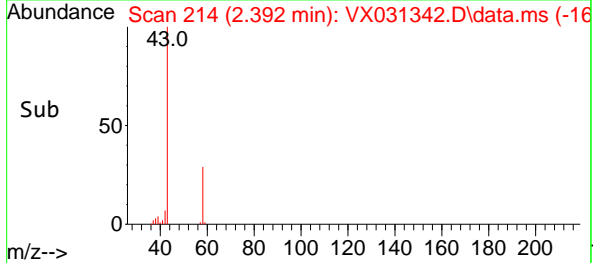
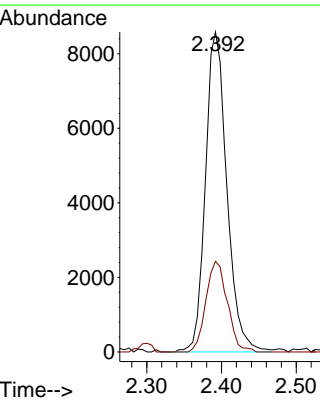
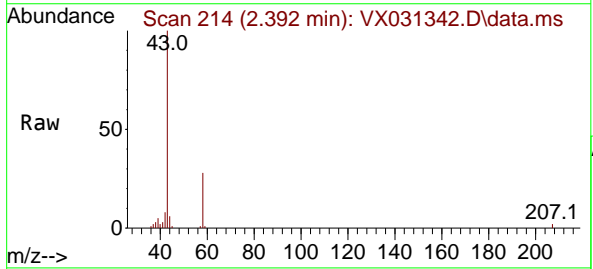
Instrument : MSVOA_X
 ClientSampleId : CHERRY-HILL-COMP-11

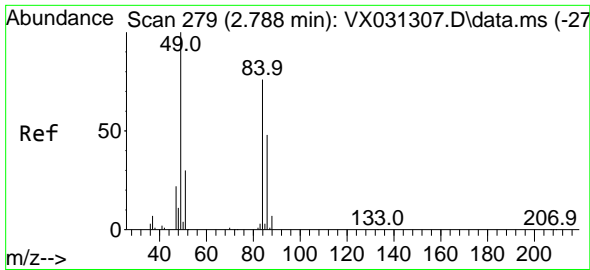
Tgt Ion:168 Resp: 55533
 Ion Ratio Lower Upper
 168 100
 99 62.0 48.8 73.2



#16
 Acetone
 Concen: 29.354 ug/l
 RT: 2.392 min Scan# 214
 Delta R.T. 0.006 min
 Lab File: VX031342.D
 Acq: 15 Sep 2022 06:46

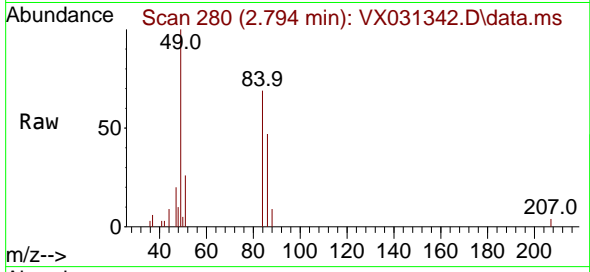
Tgt Ion: 43 Resp: 17081
 Ion Ratio Lower Upper
 43 100
 58 28.3 23.8 35.8



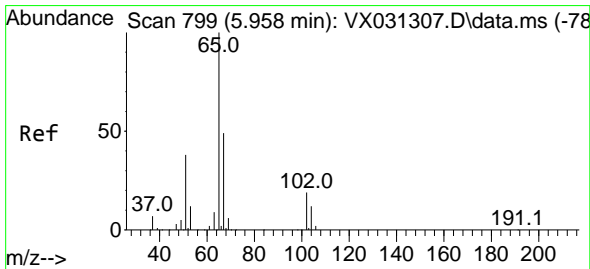
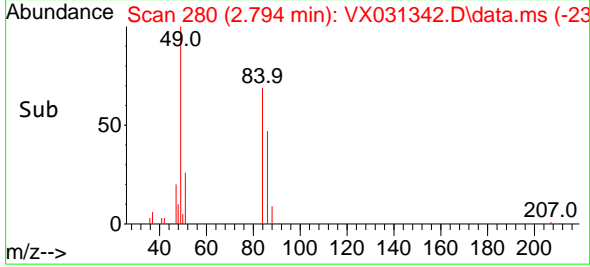
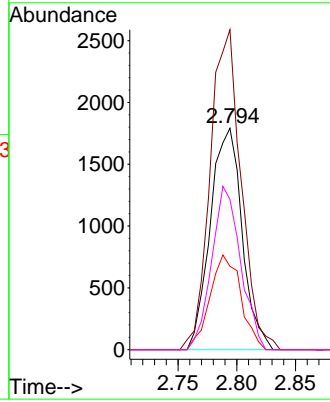


#20
 Methylene Chloride
 Concen: 1.369 ug/l
 RT: 2.794 min Scan# 21
 Delta R.T. 0.006 min
 Lab File: VX031342.D
 Acq: 15 Sep 2022 06:46

Instrument :
 MSVOA_X
 ClientSampleId :
 CHERRY-HILL-COMP-11

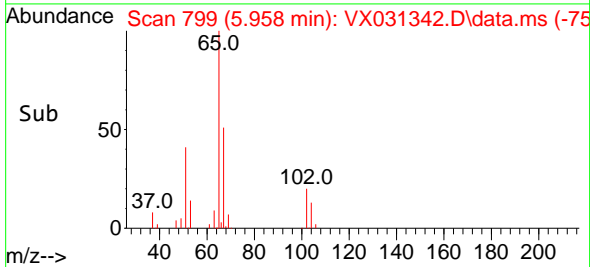
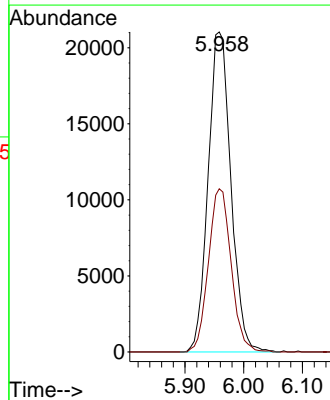
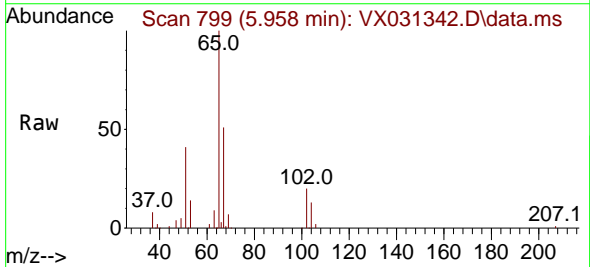


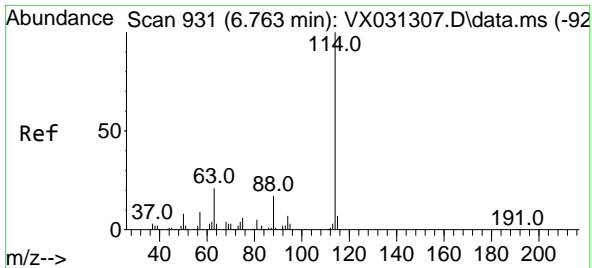
Tgt Ion: 84 Resp: 3369
 Ion Ratio Lower Upper
 84 100
 49 144.6 105.9 158.9
 51 37.6 32.2 48.2
 86 67.9 50.8 76.2



#33
 1,2-Dichloroethane-d4
 Concen: 41.604 ug/l
 RT: 5.958 min Scan# 799
 Delta R.T. 0.000 min
 Lab File: VX031342.D
 Acq: 15 Sep 2022 06:46

Tgt Ion: 65 Resp: 56709
 Ion Ratio Lower Upper
 65 100
 67 50.9 0.0 102.4



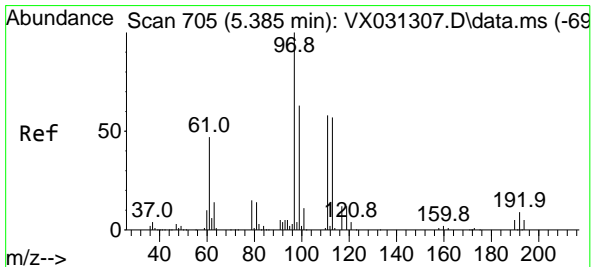
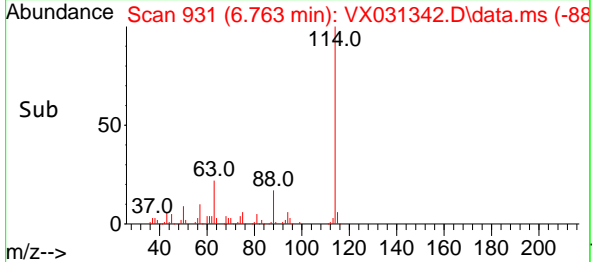
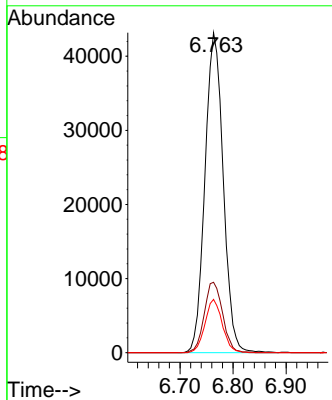
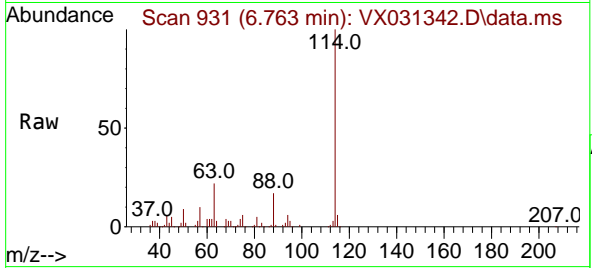


#34
 1,4-Difluorobenzene
 Concen: 50.000 ug/l
 RT: 6.763 min Scan# 911
 Delta R.T. 0.000 min
 Lab File: VX031342.D
 Acq: 15 Sep 2022 06:46

Instrument :
 MSVOA_X
 ClientSampleId :
 CHERRY-HILL-COMP-11

Tgt Ion:114 Resp: 103352

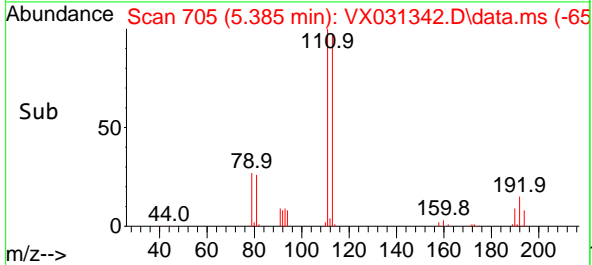
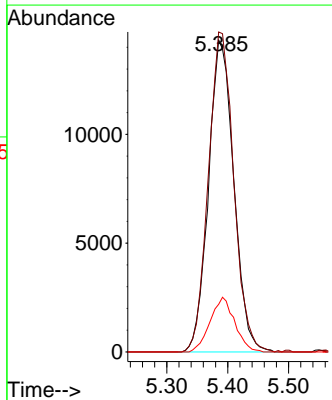
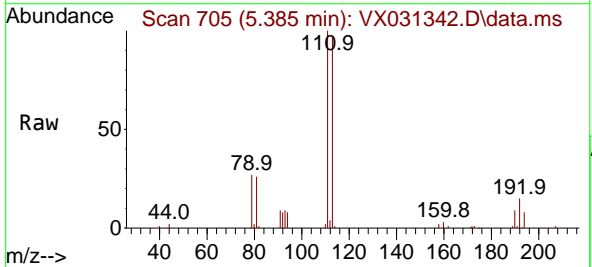
Ion	Ratio	Lower	Upper
114	100		
63	22.0	0.0	42.6
88	16.7	0.0	33.0

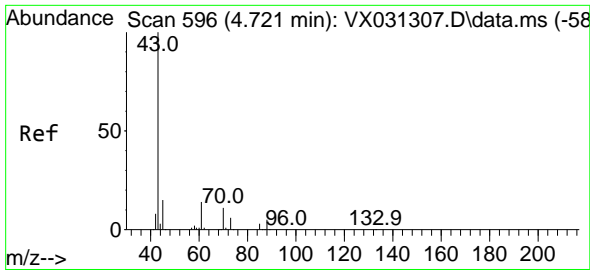


#35
 Dibromofluoromethane
 Concen: 37.171 ug/l
 RT: 5.385 min Scan# 705
 Delta R.T. 0.000 min
 Lab File: VX031342.D
 Acq: 15 Sep 2022 06:46

Tgt Ion:113 Resp: 41295

Ion	Ratio	Lower	Upper
113	100		
111	102.9	82.4	123.6
192	17.1	14.1	21.1



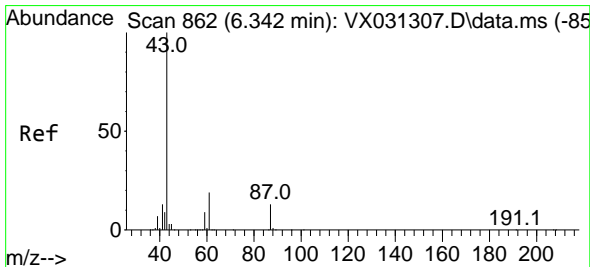
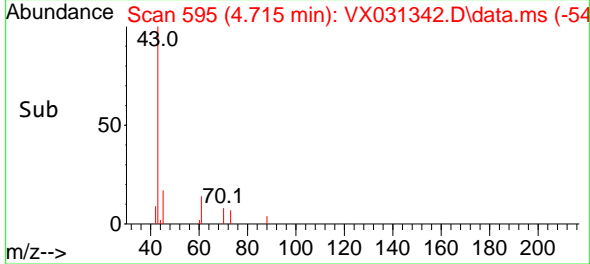
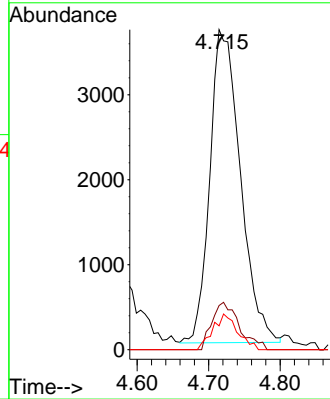
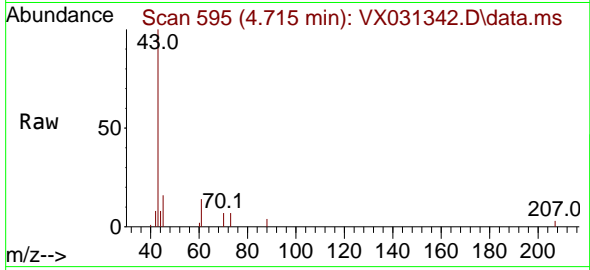


#37
 Ethyl Acetate
 Concen: 5.469 ug/l
 RT: 4.715 min Scan# 595
 Delta R.T. -0.006 min
 Lab File: VX031342.D
 Acq: 15 Sep 2022 06:46

Instrument : MSVOA_X
 ClientSampleId : CHERRY-HILL-COMP-11

Tgt Ion: 43 Resp: 10928

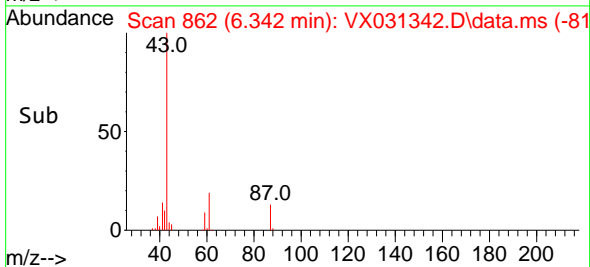
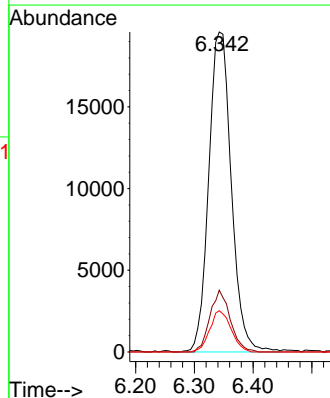
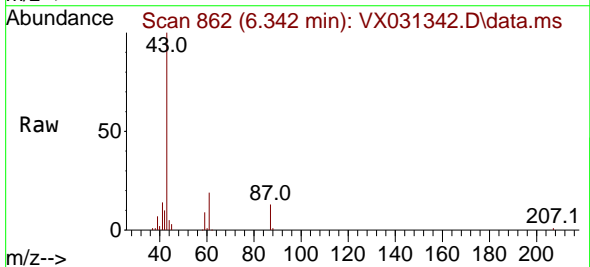
Ion	Ratio	Lower	Upper
43	100		
61	13.6	11.1	16.7
70	9.2	8.6	13.0

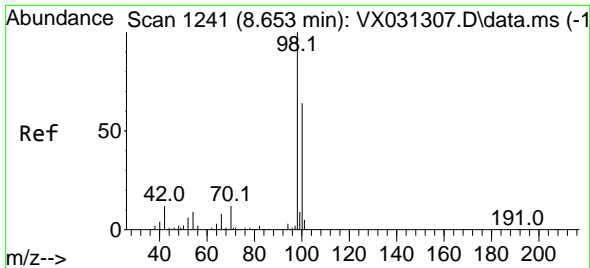


#43
 Isopropyl Acetate
 Concen: 15.323 ug/l
 RT: 6.342 min Scan# 862
 Delta R.T. 0.000 min
 Lab File: VX031342.D
 Acq: 15 Sep 2022 06:46

Tgt Ion: 43 Resp: 52266

Ion	Ratio	Lower	Upper
43	100		
61	17.4	15.3	22.9
87	12.1	10.6	15.8

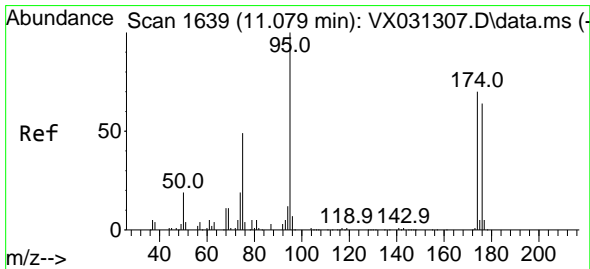
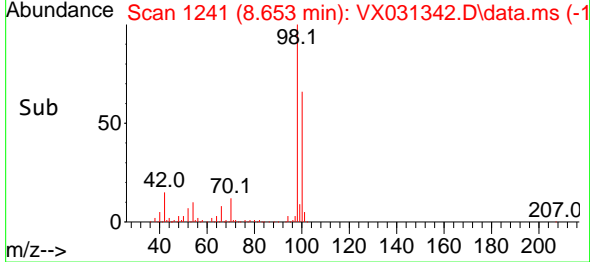
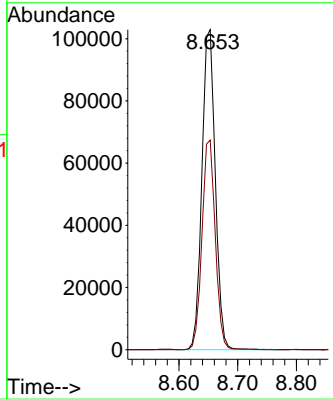
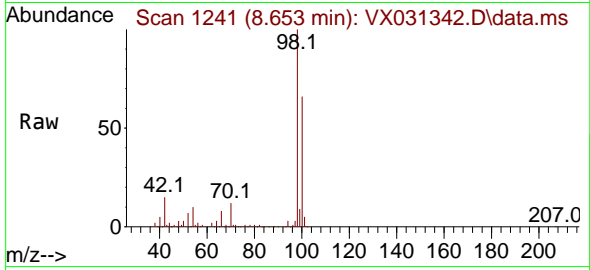




#50
 Toluene-d8
 Concen: 39.102 ug/l
 RT: 8.653 min Scan# 11
 Delta R.T. 0.000 min
 Lab File: VX031342.D
 Acq: 15 Sep 2022 06:46

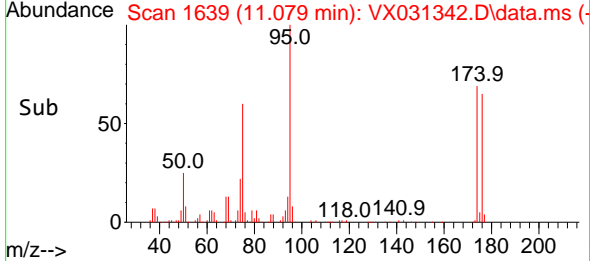
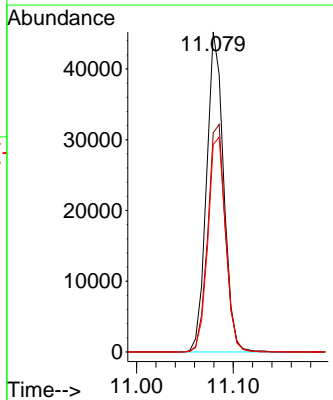
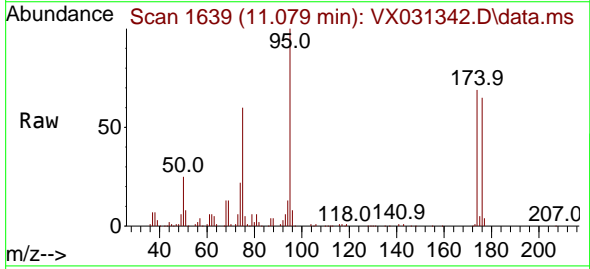
Instrument : MSVOA_X
 ClientSampleId : CHERRY-HILL-COMP-11

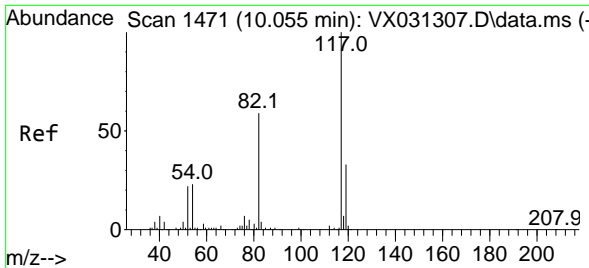
Tgt Ion: 98 Resp: 162954
 Ion Ratio Lower Upper
 98 100
 100 65.1 52.5 78.7



#62
 4-Bromofluorobenzene
 Concen: 36.374 ug/l
 RT: 11.079 min Scan# 1639
 Delta R.T. 0.000 min
 Lab File: VX031342.D
 Acq: 15 Sep 2022 06:46

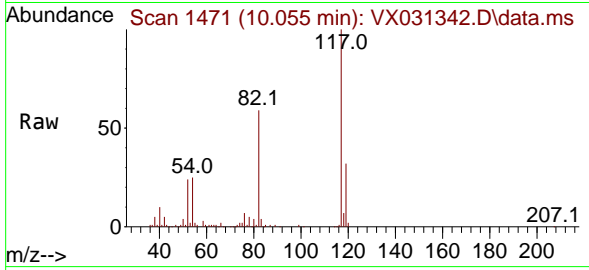
Tgt Ion: 95 Resp: 55509
 Ion Ratio Lower Upper
 95 100
 174 73.2 0.0 153.2
 176 69.7 0.0 144.0





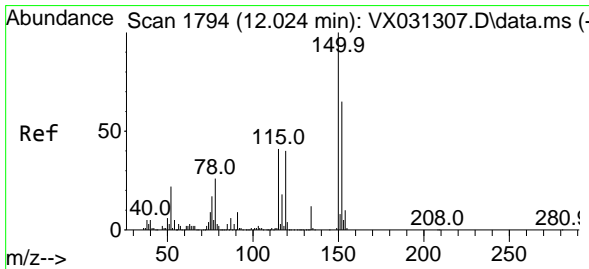
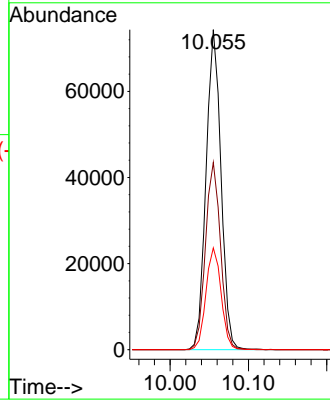
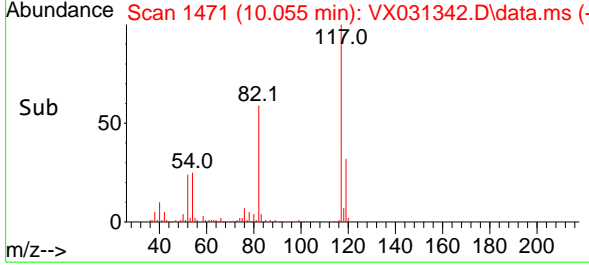
#63
 Chlorobenzene-d5
 Concen: 50.000 ug/l
 RT: 10.055 min Scan# 1471
 Delta R.T. 0.000 min
 Lab File: VX031342.D
 Acq: 15 Sep 2022 06:46

Instrument : MSVOA_X
 ClientSampleId : CHERRY-HILL-COMP-11

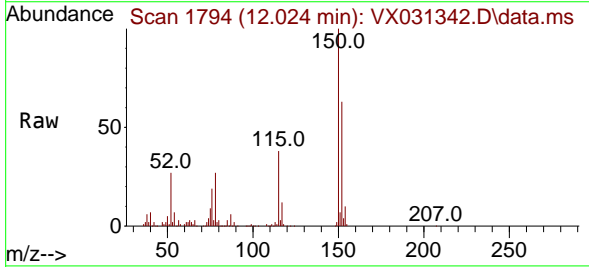


Tgt Ion:117 Resp: 98099

Ion	Ratio	Lower	Upper
117	100		
82	58.5	46.8	70.2
119	31.8	26.4	39.6



#72
 1,4-Dichlorobenzene-d4
 Concen: 50.000 ug/l
 RT: 12.024 min Scan# 1794
 Delta R.T. 0.000 min
 Lab File: VX031342.D
 Acq: 15 Sep 2022 06:46



Tgt Ion:152 Resp: 41780

Ion	Ratio	Lower	Upper
152	100		
115	61.3	43.4	130.1
150	155.3	0.0	346.8

