

Data Path : Z:\voasrv\HPCHEM1\MSVOA\_X\Data\VX091422\  
 Data File : VX031349.D  
 Acq On : 15 Sep 2022 09:29  
 Operator : JC/MD  
 Sample : N4539-02  
 Misc : 5.0mL/MSVOA\_X/WATER  
 ALS Vial : 57 Sample Multiplier: 1

Instrument :  
 MSVOA\_X  
 ClientSampleId :  
 MBD-WC-S-MP-1-45-46

Quant Time: Sep 15 11:13:51 2022  
 Quant Method : Z:\voasrv\HPCHEM1\MSVOA\_X\Method\82X091422W.M  
 Quant Title : SW846 8260  
 QLast Update : Thu Sep 15 01:50:07 2022  
 Response via : Initial Calibration

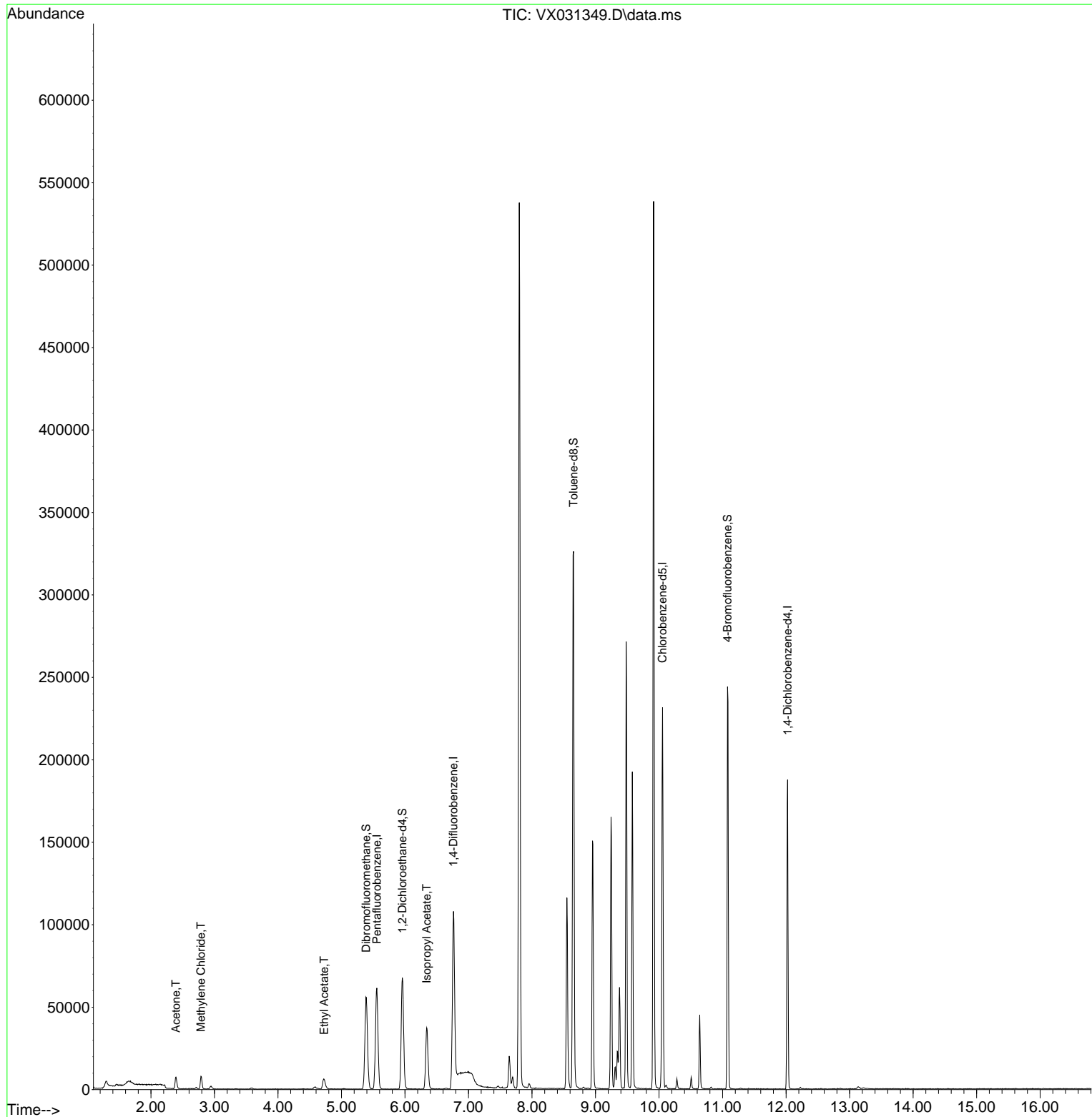
Compound	R.T.	QIon	Response	Conc	Units	Dev(Min)
-----						
Internal Standards						
1) Pentafluorobenzene	5.556	168	53811	50.000	ug/l	0.00
34) 1,4-Difluorobenzene	6.763	114	97608	50.000	ug/l	0.00
63) Chlorobenzene-d5	10.055	117	90552	50.000	ug/l	0.00
72) 1,4-Dichlorobenzene-d4	12.024	152	34373	50.000	ug/l	0.00
System Monitoring Compounds						
33) 1,2-Dichloroethane-d4	5.958	65	63571	48.130	ug/l	0.00
Spiked Amount	50.000	Range	74 - 125	Recovery	=	96.260%
35) Dibromofluoromethane	5.385	113	47182	44.969	ug/l	0.00
Spiked Amount	50.000	Range	75 - 124	Recovery	=	89.940%
50) Toluene-d8	8.653	98	185804	47.209	ug/l	0.00
Spiked Amount	50.000	Range	86 - 113	Recovery	=	94.420%
62) 4-Bromofluorobenzene	11.079	95	59794	41.488	ug/l	0.00
Spiked Amount	50.000	Range	83 - 123	Recovery	=	82.980%#
Target Compounds						
						Qvalue
16) Acetone	2.392	43	9173	16.268	ug/l	97
20) Methylene Chloride	2.788	84	3239	1.339	ug/l	95
37) Ethyl Acetate	4.727	43	11209	5.939	ug/l #	90
43) Isopropyl Acetate	6.342	43	53234	16.525	ug/l	96
-----						

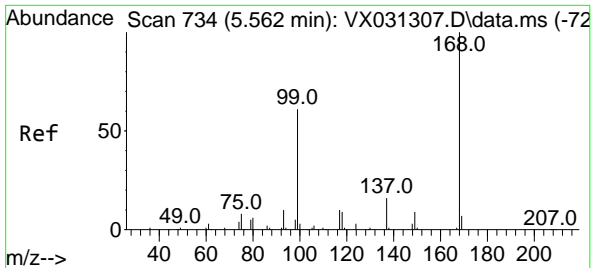
(#) = qualifier out of range (m) = manual integration (+) = signals summed

Data Path : Z:\voasrv\HPCHEM1\MSVOA\_X\Data\VX091422\  
Data File : VX031349.D  
Acq On : 15 Sep 2022 09:29  
Operator : JC/MD  
Sample : N4539-02  
Misc : 5.0mL/MSVOA\_X/WATER  
ALS Vial : 57 Sample Multiplier: 1

Instrument :  
MSVOA\_X  
ClientSampleId :  
MBD-WC-S-MP-1-45-46

Quant Time: Sep 15 11:13:51 2022  
Quant Method : Z:\voasrv\HPCHEM1\MSVOA\_X\Method\82X091422W.M  
Quant Title : SW846 8260  
QLast Update : Thu Sep 15 01:50:07 2022  
Response via : Initial Calibration

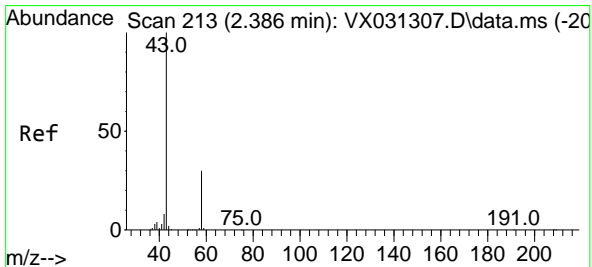
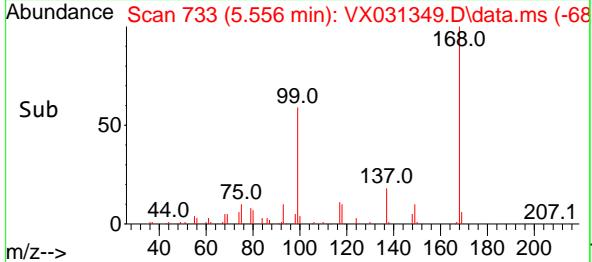
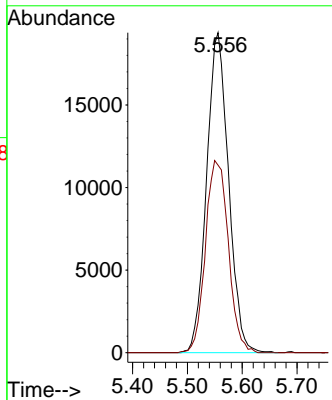
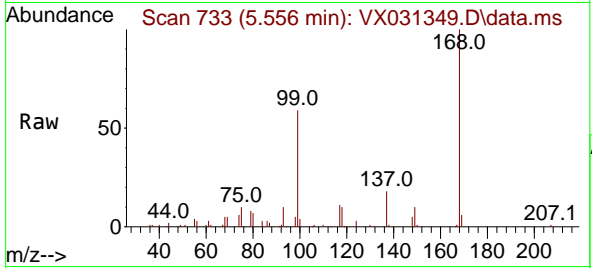




#1  
 Pentafluorobenzene  
 Concen: 50.000 ug/l  
 RT: 5.556 min Scan# 71  
 Delta R.T. -0.006 min  
 Lab File: VX031349.D  
 Acq: 15 Sep 2022 09:29

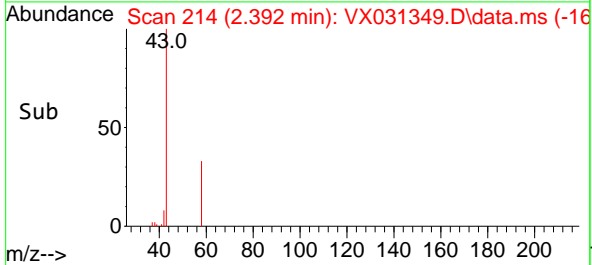
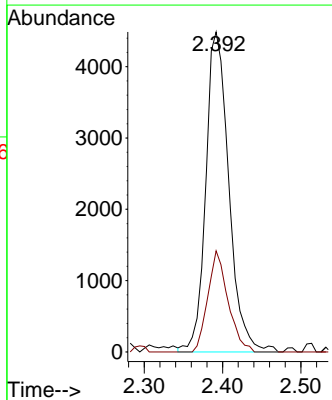
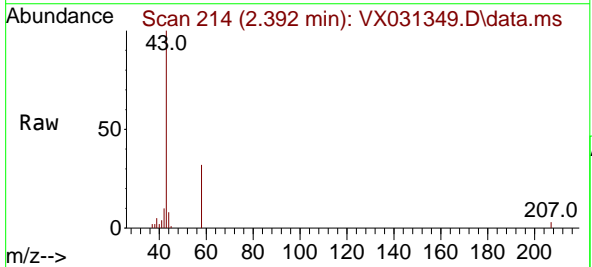
Instrument :  
 MSVOA\_X  
 ClientSampleId :  
 MBD-WC-S-MP-1-45-46

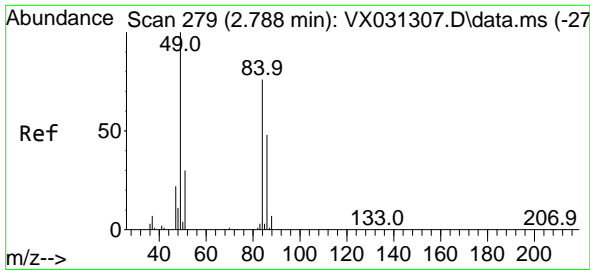
Tgt Ion:168 Resp: 53811  
 Ion Ratio Lower Upper  
 168 100  
 99 58.6 48.8 73.2



#16  
 Acetone  
 Concen: 16.268 ug/l  
 RT: 2.392 min Scan# 214  
 Delta R.T. 0.006 min  
 Lab File: VX031349.D  
 Acq: 15 Sep 2022 09:29

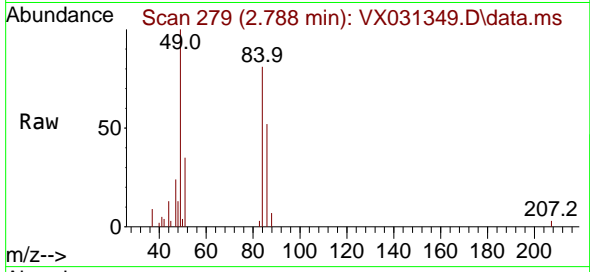
Tgt Ion: 43 Resp: 9173  
 Ion Ratio Lower Upper  
 43 100  
 58 31.6 23.8 35.8





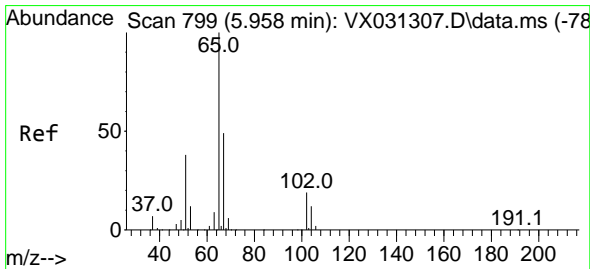
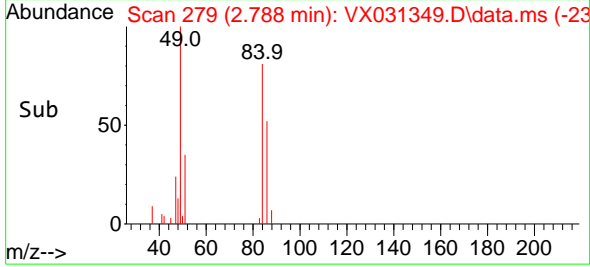
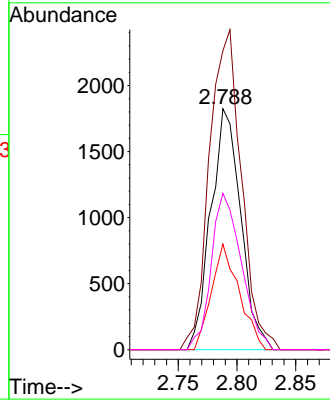
#20  
 Methylene Chloride  
 Concen: 1.339 ug/l  
 RT: 2.788 min Scan# 21  
 Delta R.T. -0.000 min  
 Lab File: VX031349.D  
 Acq: 15 Sep 2022 09:29

Instrument : MSVOA\_X  
 ClientSampleId : MBD-WC-S-MP-1-45-46



Tgt Ion: 84 Resp: 3239

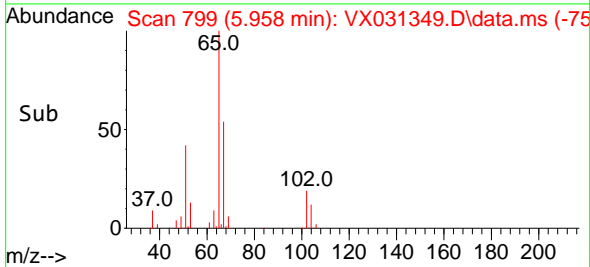
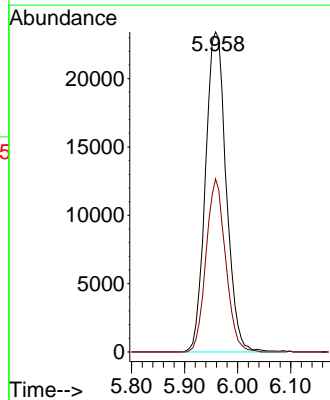
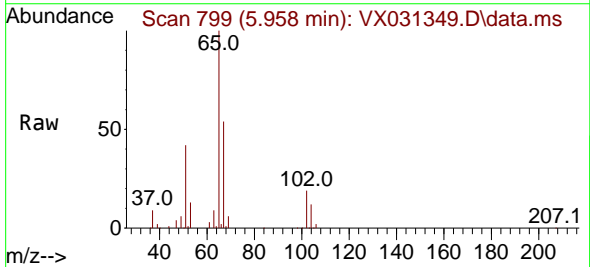
Ion	Ratio	Lower	Upper
84	100		
49	124.1	105.9	158.9
51	43.8	32.2	48.2
86	64.8	50.8	76.2

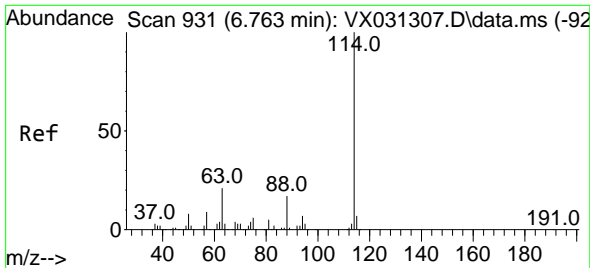


#33  
 1,2-Dichloroethane-d4  
 Concen: 48.130 ug/l  
 RT: 5.958 min Scan# 799  
 Delta R.T. 0.000 min  
 Lab File: VX031349.D  
 Acq: 15 Sep 2022 09:29

Tgt Ion: 65 Resp: 63571

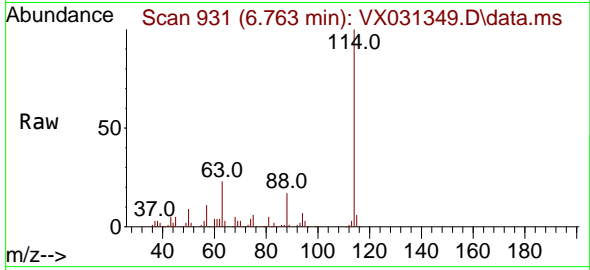
Ion	Ratio	Lower	Upper
65	100		
67	51.0	0.0	102.4





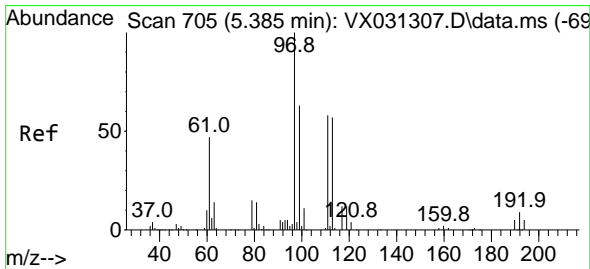
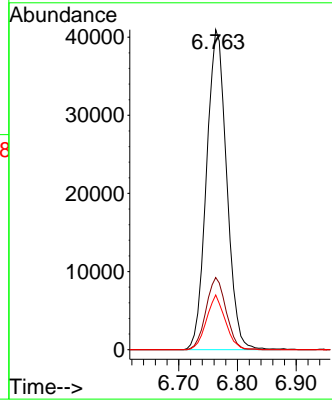
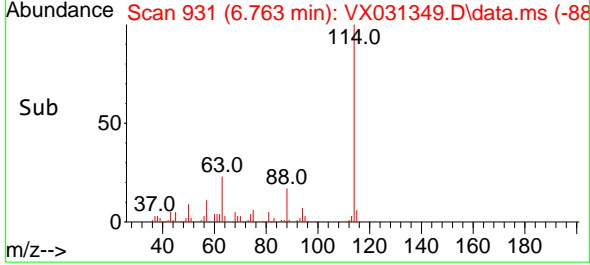
#34  
 1,4-Difluorobenzene  
 Concen: 50.000 ug/l  
 RT: 6.763 min Scan# 911  
 Delta R.T. 0.000 min  
 Lab File: VX031349.D  
 Acq: 15 Sep 2022 09:29

Instrument : MSVOA\_X  
 ClientSampleId : MBD-WC-S-MP-1-45-46

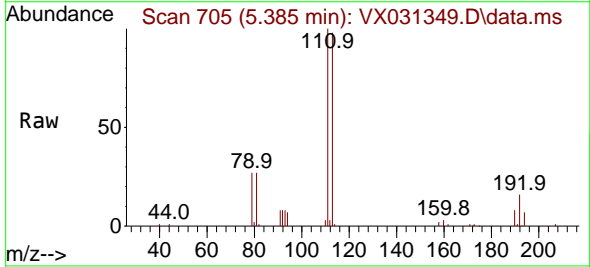


Tgt Ion:114 Resp: 97608

Ion	Ratio	Lower	Upper
114	100		
63	22.5	0.0	42.6
88	17.1	0.0	33.0

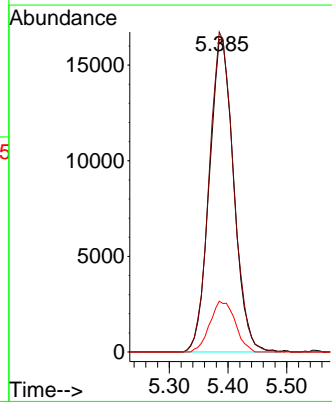
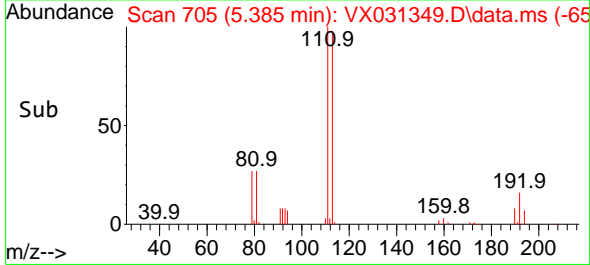


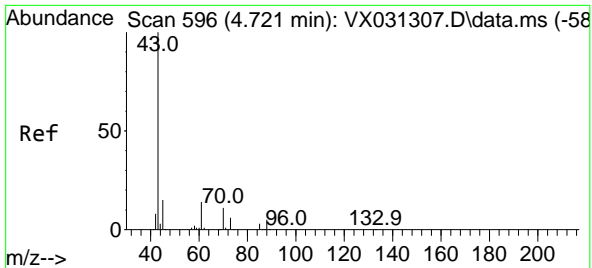
#35  
 Dibromofluoromethane  
 Concen: 44.969 ug/l  
 RT: 5.385 min Scan# 705  
 Delta R.T. 0.000 min  
 Lab File: VX031349.D  
 Acq: 15 Sep 2022 09:29



Tgt Ion:113 Resp: 47182

Ion	Ratio	Lower	Upper
113	100		
111	101.7	82.4	123.6
192	16.8	14.1	21.1



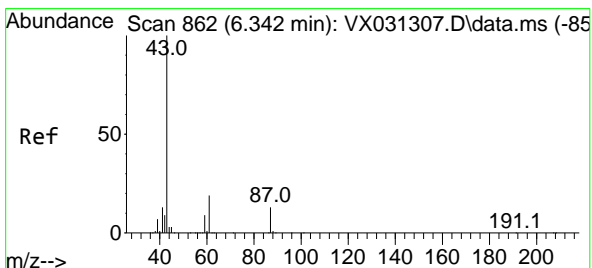
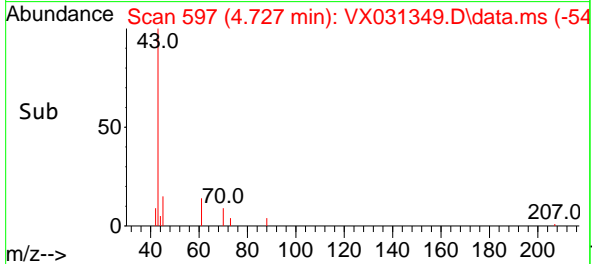
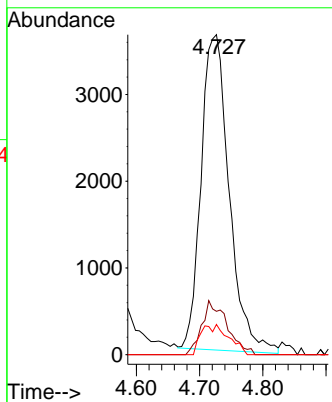
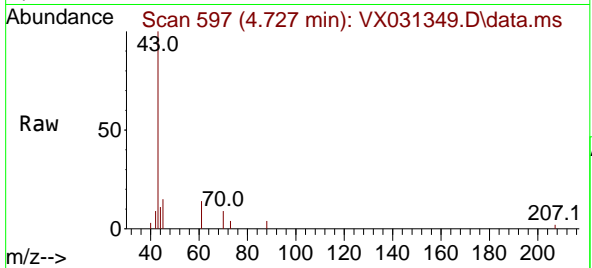


#37  
 Ethyl Acetate  
 Concen: 5.939 ug/l  
 RT: 4.727 min Scan# 596  
 Delta R.T. 0.006 min  
 Lab File: VX031349.D  
 Acq: 15 Sep 2022 09:29

Instrument : MSVOA\_X  
 ClientSampleId : MBD-WC-S-MP-1-45-46

Tgt Ion: 43 Resp: 11209

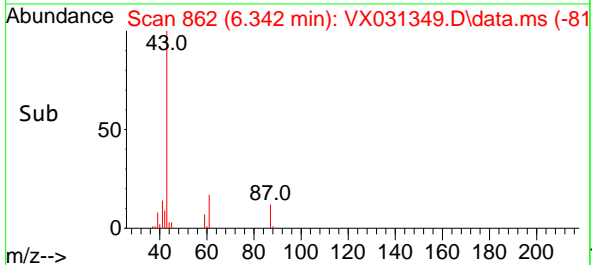
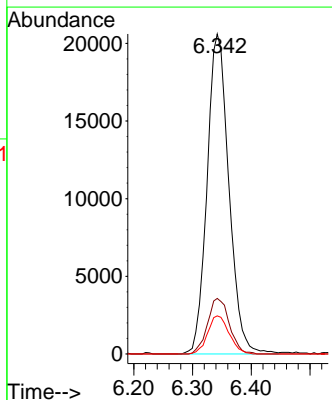
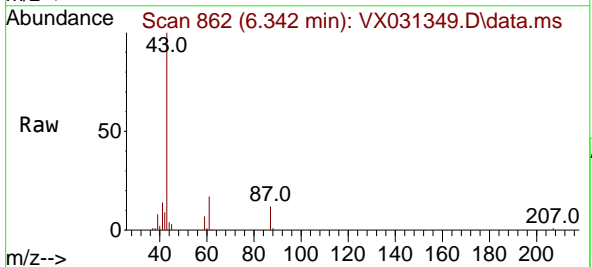
Ion	Ratio	Lower	Upper
43	100		
61	15.5	11.1	16.7
70	4.4	8.6	13.0

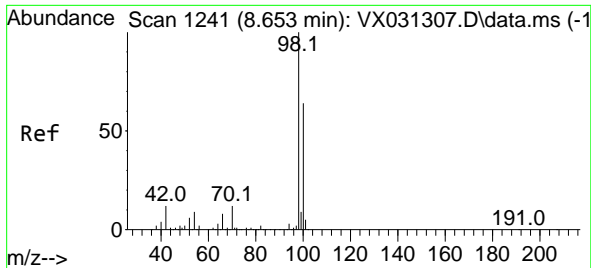


#43  
 Isopropyl Acetate  
 Concen: 16.525 ug/l  
 RT: 6.342 min Scan# 862  
 Delta R.T. 0.000 min  
 Lab File: VX031349.D  
 Acq: 15 Sep 2022 09:29

Tgt Ion: 43 Resp: 53234

Ion	Ratio	Lower	Upper
43	100		
61	17.3	15.3	22.9
87	11.7	10.6	15.8

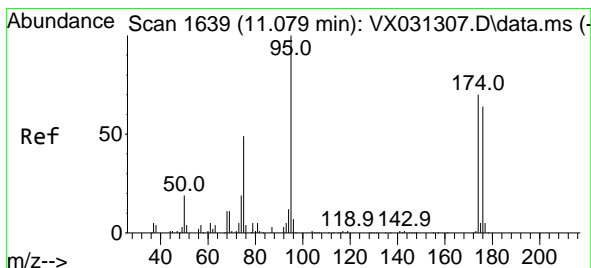
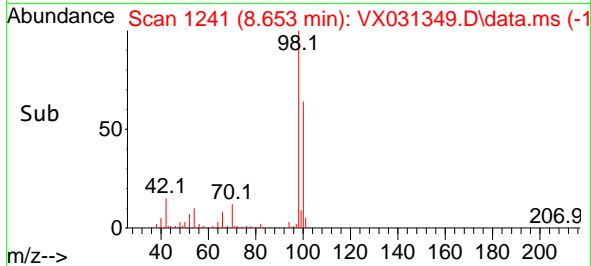
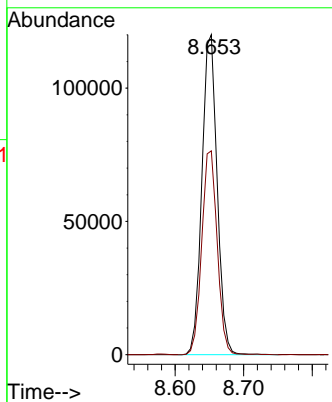
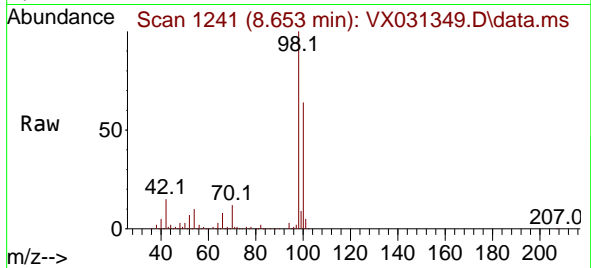




#50  
 Toluene-d8  
 Concen: 47.209 ug/l  
 RT: 8.653 min Scan# 1241  
 Delta R.T. 0.000 min  
 Lab File: VX031349.D  
 Acq: 15 Sep 2022 09:29

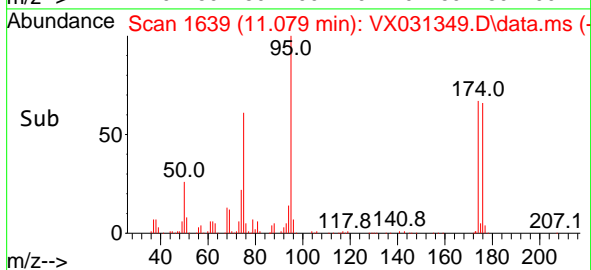
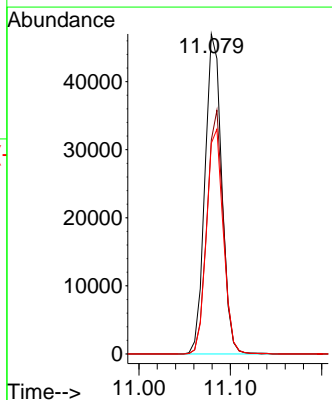
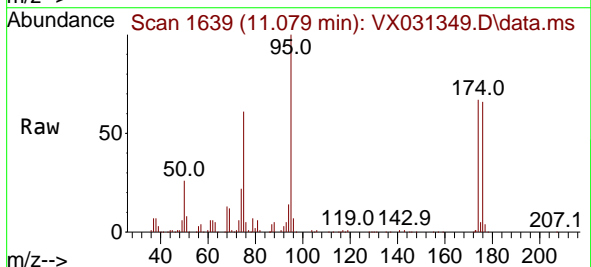
Instrument : MSVOA\_X  
 ClientSampleId : MBD-WC-S-MP-1-45-46

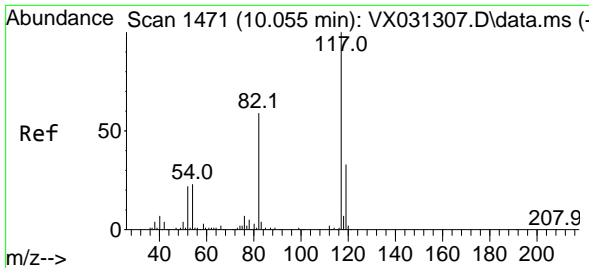
Tgt Ion: 98 Resp: 185804  
 Ion Ratio Lower Upper  
 98 100  
 100 64.5 52.5 78.7



#62  
 4-Bromofluorobenzene  
 Concen: 41.488 ug/l  
 RT: 11.079 min Scan# 1639  
 Delta R.T. 0.000 min  
 Lab File: VX031349.D  
 Acq: 15 Sep 2022 09:29

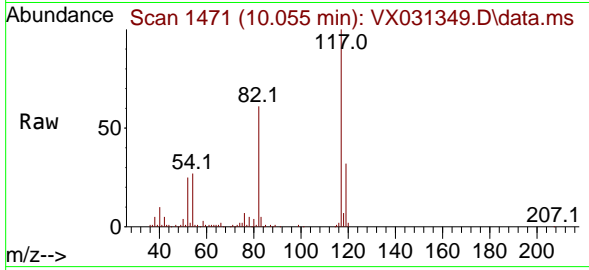
Tgt Ion: 95 Resp: 59794  
 Ion Ratio Lower Upper  
 95 100  
 174 74.2 0.0 153.2  
 176 70.5 0.0 144.0





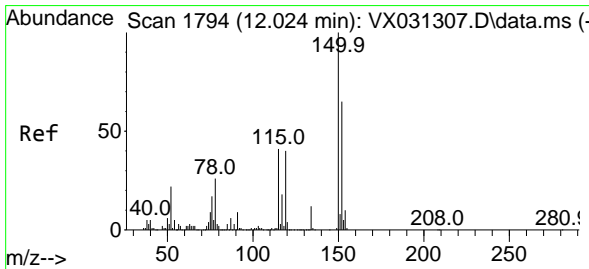
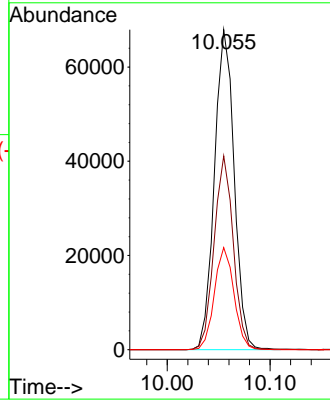
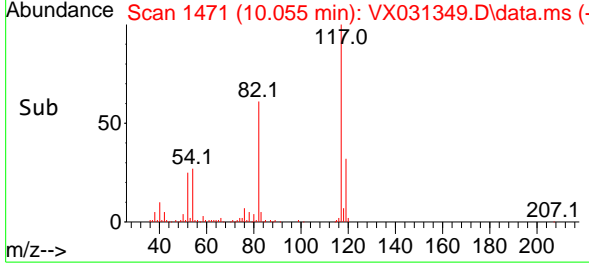
#63  
 Chlorobenzene-d5  
 Concen: 50.000 ug/l  
 RT: 10.055 min Scan# 1471  
 Delta R.T. 0.000 min  
 Lab File: VX031349.D  
 Acq: 15 Sep 2022 09:29

Instrument : MSVOA\_X  
 ClientSampleId : MBD-WC-S-MP-1-45-46

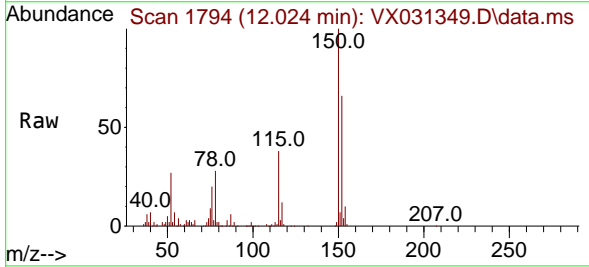


Tgt Ion:117 Resp: 90552

Ion	Ratio	Lower	Upper
117	100		
82	60.5	46.8	70.2
119	31.9	26.4	39.6



#72  
 1,4-Dichlorobenzene-d4  
 Concen: 50.000 ug/l  
 RT: 12.024 min Scan# 1794  
 Delta R.T. 0.000 min  
 Lab File: VX031349.D  
 Acq: 15 Sep 2022 09:29



Tgt Ion:152 Resp: 34373

Ion	Ratio	Lower	Upper
152	100		
115	61.7	43.4	130.1
150	156.1	0.0	346.8

