

Data Path : Z:\voasrv\HPCHEM1\MSVOA_X\Data\VX091422\
 Data File : VX031321.D
 Acq On : 14 Sep 2022 21:25
 Operator : JC/MD
 Sample : N4492-22
 Misc : 5.0mL/MSVOA_X/WATER
 ALS Vial : 22 Sample Multiplier: 1

Instrument :
 MSVOA_X
 ClientSampleId :
 TB01-090122

Integration Parameters: RTEINT.P

Integrator: RTE
 Smoothing : ON Filtering: 5
 Sampling : 1 Min Area: 3 % of largest Peak
 Start Thrs: 0.2 Max Peaks: 100
 Stop Thrs : 0 Peak Location: TOP

If leading or trailing edge < 100 prefer < Baseline drop else tangent >
 Peak separation: 5

Method : Z:\voasrv\HPCHEM1\MSVOA_X\Method\82X091422W.M
 Title : SW846 8260

Signal : TIC: VX031321.D\data.ms

peak #	R.T. min	first scan	max scan	last scan	PK TY	peak height	corr. area	corr. % max.	% of total
1	2.947	296	305	313	rBV	8981	19655	3.88%	0.850%
2	4.586	562	574	589	rBV2	5296	19494	3.85%	0.843%
3	5.391	694	706	720	rBV	55544	161292	31.86%	6.974%
4	5.556	723	733	746	rVB	71017	197084	38.93%	8.521%
5	5.958	789	799	814	rBV	67754	181219	35.80%	7.835%
6	6.763	921	931	944	rBV	116557	275325	54.39%	11.904%
7	8.653	1234	1241	1251	rBV	321386	506235	100.00%	21.888%
8	10.055	1465	1471	1484	rBV	260559	337949	66.76%	14.612%
9	11.079	1634	1639	1651	rVB	240680	319340	63.08%	13.808%
10	12.024	1788	1794	1802	rBV	236474	295205	58.31%	12.764%

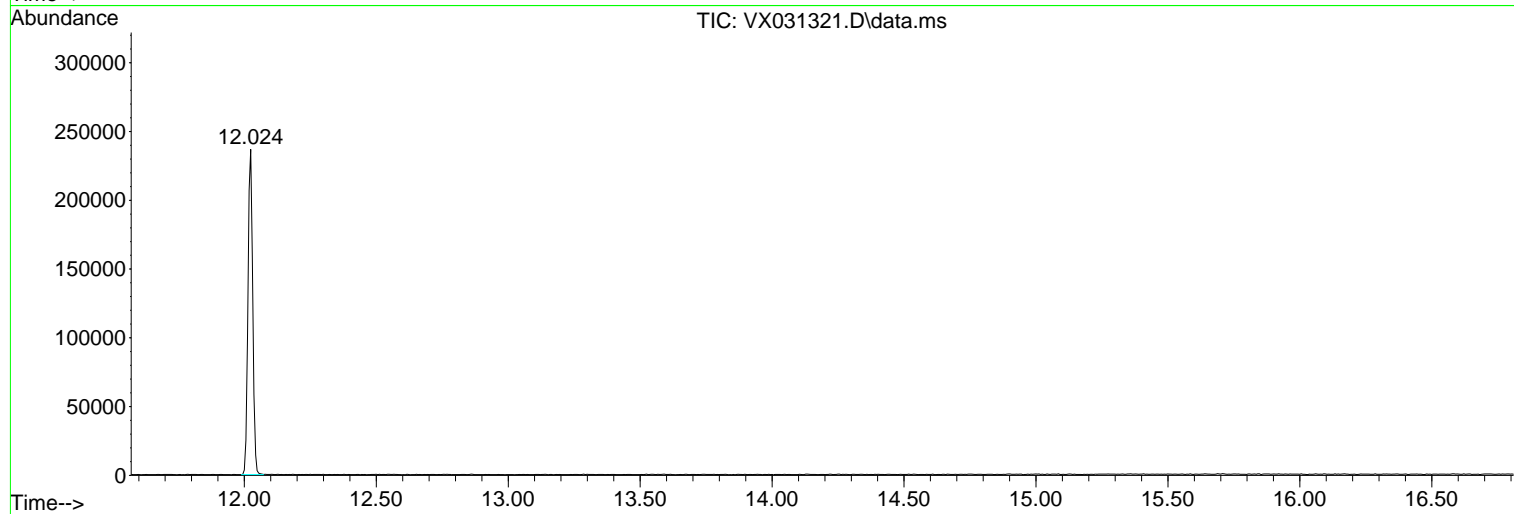
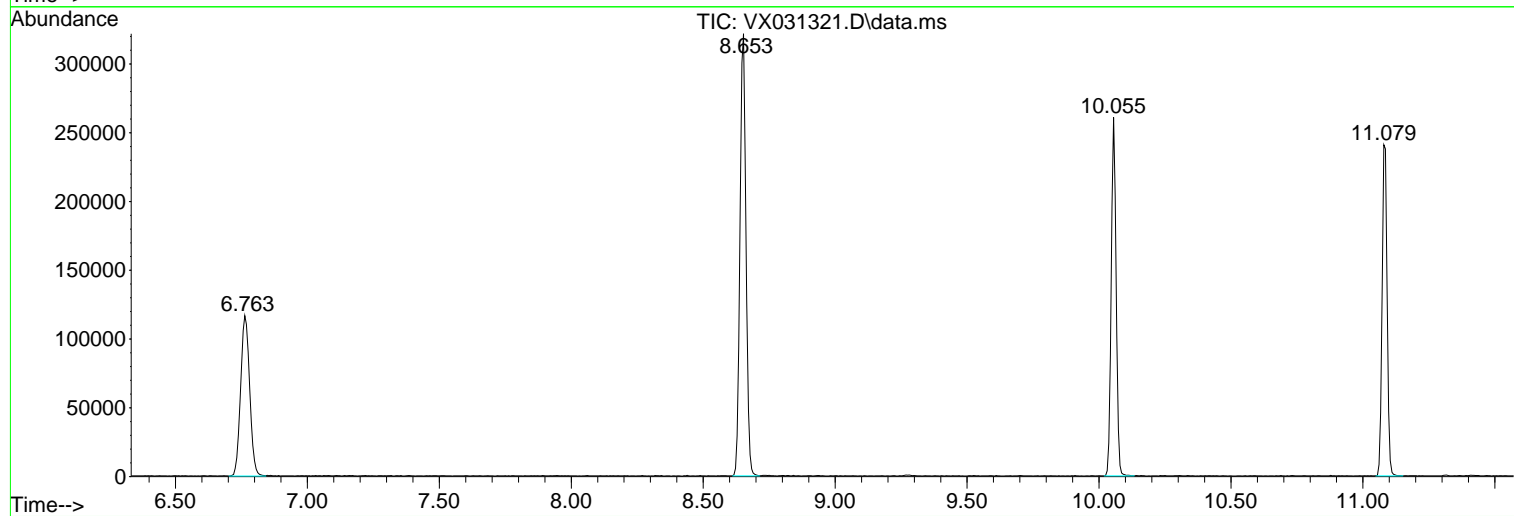
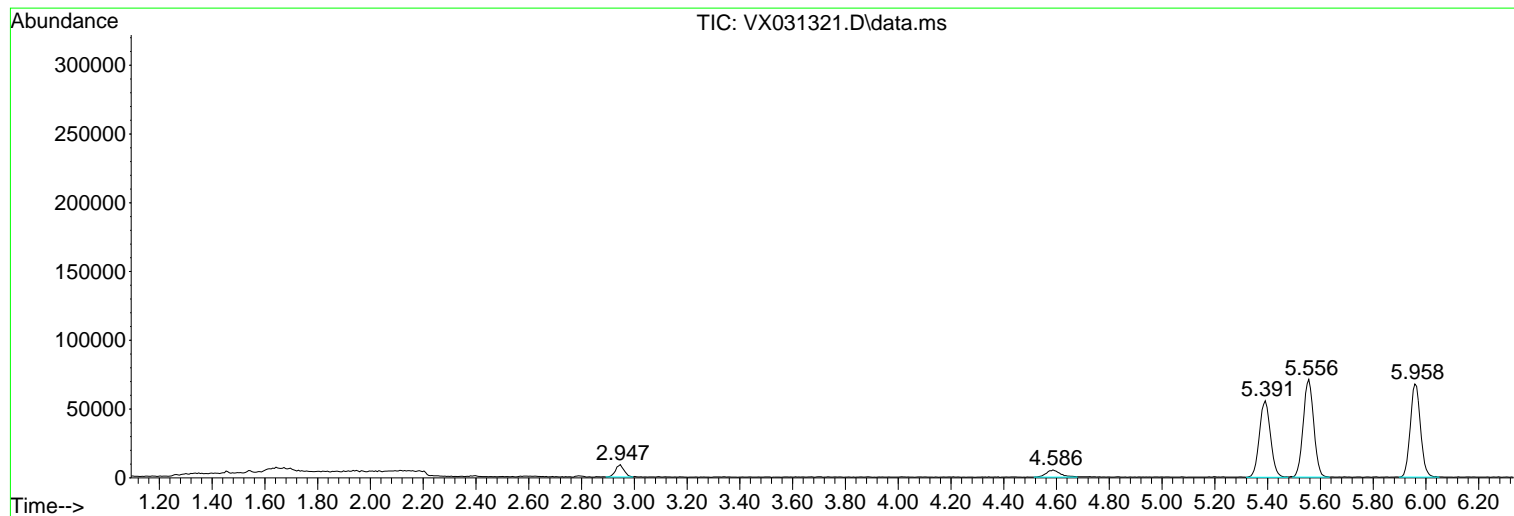
Sum of corrected areas: 2312798

Data Path : Z:\voasrv\HPCHEM1\MSVOA_X\Data\VX091422\
Data File : VX031321.D
Acq On : 14 Sep 2022 21:25
Operator : JC/MD
Sample : N4492-22
Misc : 5.0mL/MSVOA_X/WATER
ALS Vial : 22 Sample Multiplier: 1

Instrument :
MSVOA_X
ClientSampleId :
TB01-090122

Quant Method : Z:\voasrv\HPCHEM1\MSVOA_X\Method\82X091422W.M
Quant Title : SW846 8260

TIC Library : C:\Database\NIST20.L
TIC Integration Parameters: LSCINT.P



Library Search Compound Report

Data Path : Z:\voasrv\HPCHEM1\MSVOA_X\Data\VX091422\
Data File : VX031321.D
Acq On : 14 Sep 2022 21:25
Operator : JC/MD
Sample : N4492-22
Misc : 5.0mL/MSVOA_X/WATER
ALS Vial : 22 Sample Multiplier: 1

Instrument :
MSVOA_X
ClientSampleId :
TB01-090122

Quant Method : Z:\voasrv\HPCHEM1\MSVOA_X\Method\82X091422W.M
Quant Title : SW846 8260

TIC Library : C:\Database\NIST20.L
TIC Integration Parameters: LSCINT.P

No Library Search Compounds Detected

Data Path : Z:\voasrv\HPCHEM1\MSVOA_X\Data\VX091422\
Data File : VX031321.D
Acq On : 14 Sep 2022 21:25
Operator : JC/MD
Sample : N4492-22
Misc : 5.0mL/MSVOA_X/WATER
ALS Vial : 22 Sample Multiplier: 1

Instrument :
MSVOA_X
ClientSampleId :
TB01-090122

Quant Method : Z:\voasrv\HPCHEM1\MSVOA_X\Method\82X091422W.M
Quant Title : SW846 8260

TIC Library : C:\Database\NIST20.L
TIC Integration Parameters: LSCINT.P

TIC Top Hit name	RT	EstConc	Units	Response	--Internal Standard--		
					#	RT	Resp Conc
