

Data Path : Z:\VOASRV\HPCHEM1\MSVOA X\DATA\VX091518\
 Data File : VX004593.D
 Acq On : 15 Sep 2018 19:07
 Operator : JC/MD
 Sample : J4922-06
 Misc : 5.0mL/MSVOA X/WATER
 ALS Vial : 18 Sample Multiplier: 1

Instrument :
 MSVOA_X
 ClientSampled :
 LIP-22

Integration Parameters: RTEINT.P
 Integrator: RTE
 Smoothing : ON Filtering: 5
 Sampling : 1 Min Area: 3 % of largest Peak
 Start Thrs: 0.2 Max Peaks: 100
 Stop Thrs : 0 Peak Location: TOP

If leading or trailing edge < 100 prefer < Baseline drop else tangent >
 Peak separation: 5

Method : Z:\VOASRV\HPCHEM1\MSVOA_X\METHOD\82X091118W.M
 Title : SW846 8260

Signal : TIC

peak #	R.T. min	first scan	max scan	last scan	PK TY	peak height	corr. area	corr. % max.	% of total
1	1.276	15	20	22	rBV2	19453	25572	2.10%	0.383%
2	2.617	234	240	250	rVB	46390	86958	7.13%	1.303%
3	3.196	331	335	348	rVB3	6894	20233	1.66%	0.303%
4	4.769	577	593	602	rBV2	7113	23843	1.95%	0.357%
5	5.507	700	714	729	rBV	162974	465447	38.16%	6.974%
6	5.659	729	739	757	rVB	223891	633855	51.97%	9.497%
7	6.067	794	806	820	rBV2	155968	402559	33.00%	6.032%
8	6.860	926	936	954	rBV	318034	752271	61.67%	11.271%
9	8.719	1231	1241	1256	rBV	762930	1219759	100.00%	18.276%
10	10.116	1464	1470	1477	rBV	685167	906717	74.34%	13.585%
11	11.140	1632	1638	1643	rBV	669675	831897	68.20%	12.464%
12	12.079	1787	1792	1805	rBV	829896	1009154	82.73%	15.120%
13	12.719	1891	1897	1901	rBV3	15236	25140	2.06%	0.377%
14	12.896	1923	1926	1932	rVB	23976	30716	2.52%	0.460%
15	12.981	1932	1940	1945	rBV2	14008	26210	2.15%	0.393%
16	13.353	1997	2001	2006	rVB	17939	23818	1.95%	0.357%
17	13.639	2044	2048	2052	rBV4	10395	17596	1.44%	0.264%
18	13.700	2052	2058	2059	rVV5	10709	20084	1.65%	0.301%
19	13.725	2059	2062	2071	rVB3	14508	33263	2.73%	0.498%
20	13.810	2071	2076	2080	rBV	13718	20173	1.65%	0.302%
21	13.987	2100	2105	2109	rVV	19796	28732	2.36%	0.430%
22	14.036	2109	2113	2119	rVB3	8190	13750	1.13%	0.206%
23	14.542	2192	2196	2201	rBV2	17459	23762	1.95%	0.356%
24	14.846	2240	2246	2259	rVB	12612	32662	2.68%	0.489%

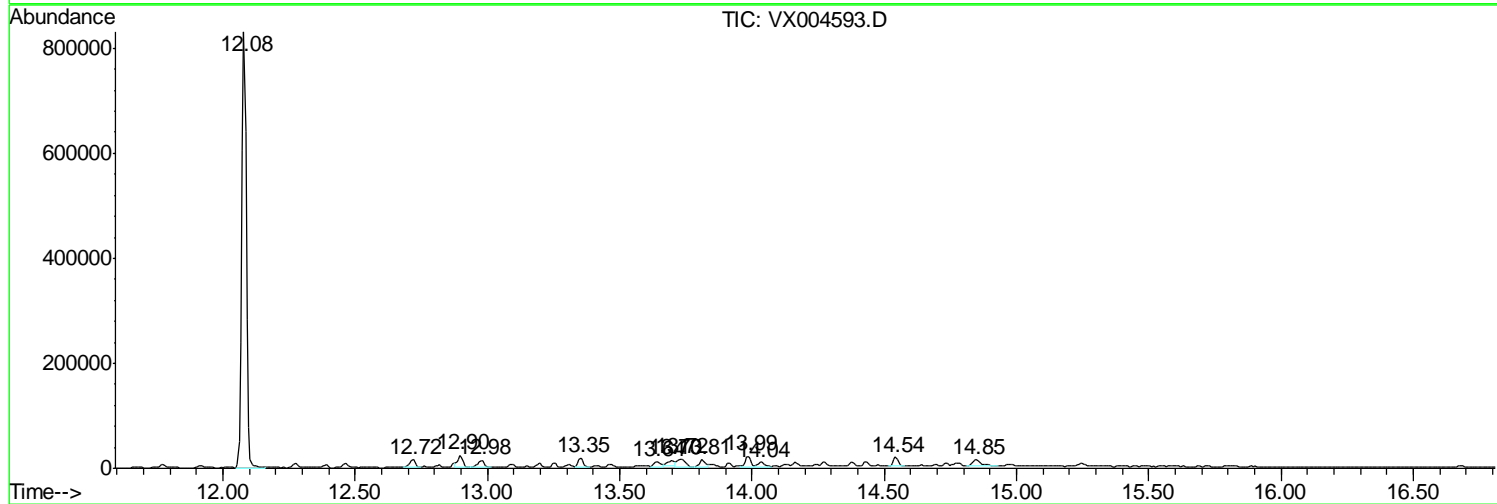
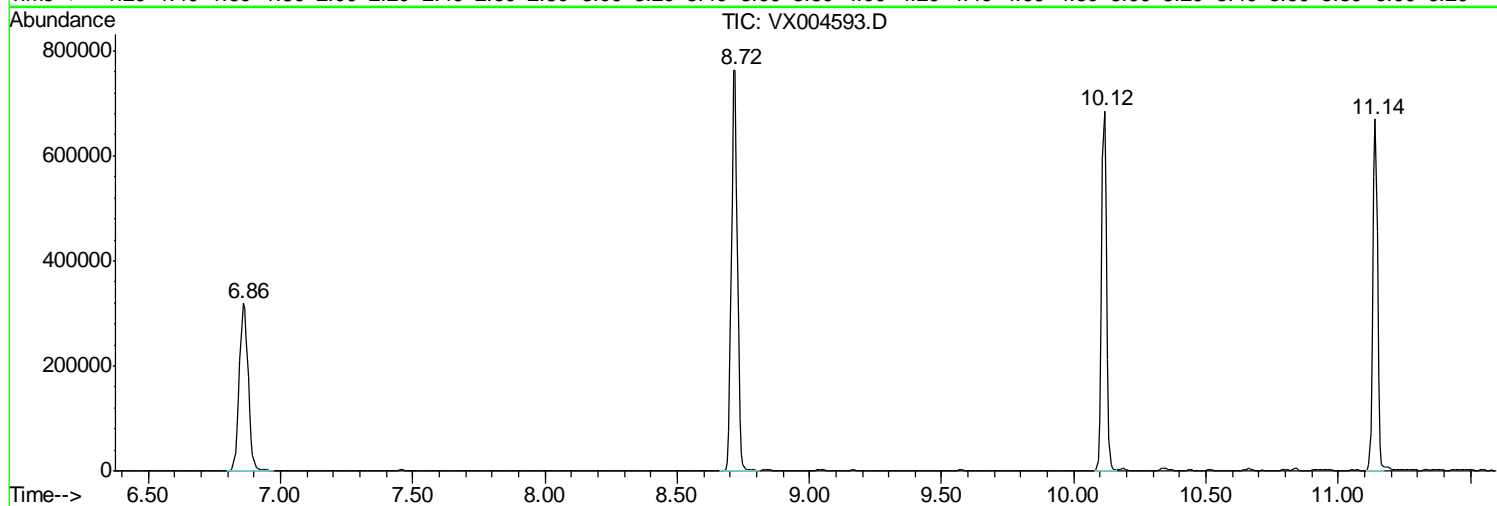
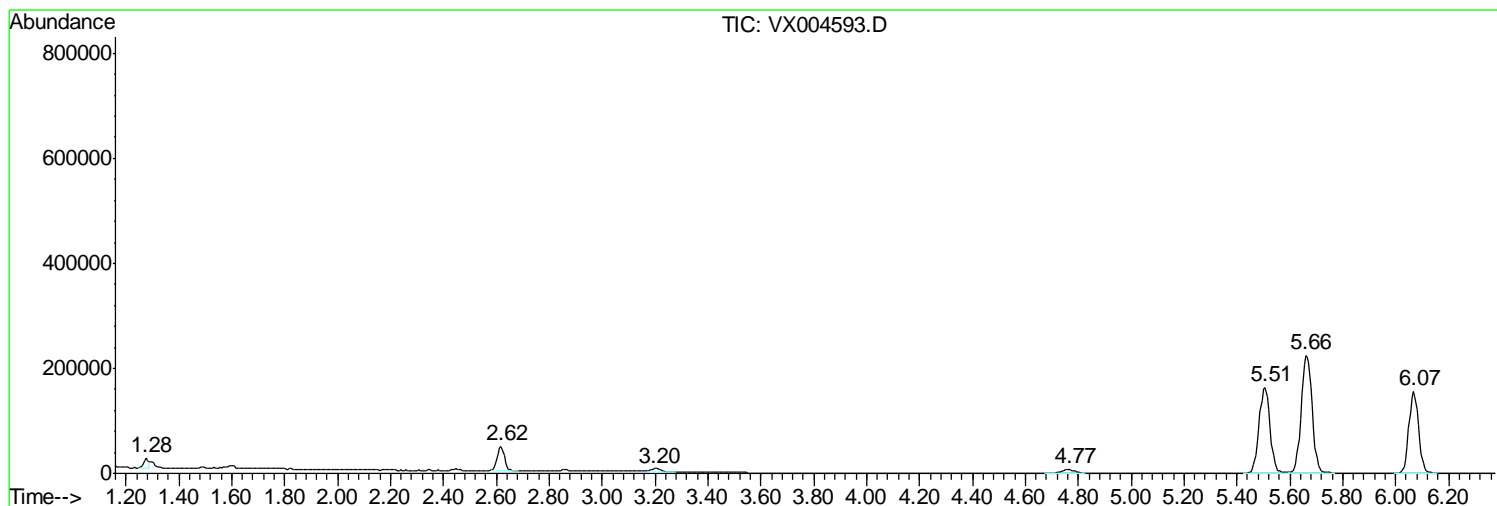
Sum of corrected areas: 6674171

Data Path : Z:\VOASRV\HPCHEM1\MSVOA X\DATA\VX091518\
 Data File : VX004593.D
 Acq On : 15 Sep 2018 19:07
 Operator : JC/MD
 Sample : J4922-06
 Misc : 5.0mL/MSVOA X/WATER
 ALS Vial : 18 Sample Multiplier: 1

Instrument :
 MSVOA_X
 ClientSampled :
 LIP-22

Quant Method : Z:\VOASRV\HPCHEM1\MSVOA_X\METHOD\82X091118W.M
 Quant Title : SW846 8260

TIC Library : C:\DATABASE\NIST11.L
 TIC Integration Parameters: LSCINT.P



Data Path : Z:\VOASRV\HPCHEM1\MSVOA_X\DATA\VX091518\
Data File : VX004593.D
Acq On : 15 Sep 2018 19:07
Operator : JC/MD
Sample : J4922-06
Misc : 5.0mL/MSVOA_X/WATER
ALS Vial : 18 Sample Multiplier: 1

Instrument :
MSVOA_X
ClientSampleId :
LIP-22

Quant Method : Z:\VOASRV\HPCHEM1\MSVOA_X\METHOD\82X091118W.M
Quant Title : SW846 8260

TIC Library : C:\DATABASE\NIST11.L
TIC Integration Parameters: LSCINT.P

No Library Search Compounds Detected

Data Path : Z:\VOASRV\HPCHEM1\MSVOA_X\DATA\VX091518\
Data File : VX004593.D
Acq On : 15 Sep 2018 19:07
Operator : JC/MD
Sample : J4922-06
Misc : 5.0mL/MSVOA_X/WATER
ALS Vial : 18 Sample Multiplier: 1

Instrument :
MSVOA_X
ClientSampleId :
LIP-22

Quant Method : Z:\VOASRV\HPCHEM1\MSVOA_X\METHOD\82X091118W.M
Quant Title : SW846 8260

TIC Library : C:\DATABASE\NIST11.L
TIC Integration Parameters: LSCINT.P

TIC Top Hit name	RT	EstConc	Units	Response	--Internal Standard--			
					#	RT	Resp	Conc
