

Data Path : Z:\VOASRV\HPCHEM1\MSVOA X\DATA\VX091520\
 Data File : VX018418.D
 Acq On : 15 Sep 2020 19:33
 Operator : JC/SP
 Sample : L3867-06
 Misc : 5.0mL/MSVOA X/WATER
 ALS Vial : 19 Sample Multiplier: 1

Instrument :
 MSVOA_X
 ClientSampleId :
 EO-02-091420

Quant Time: Sep 16 03:39:19 2020
 Quant Method : Z:\VOASRV\HPCHEM1\MSVOA_X\METHOD\82X082120W.M
 Quant Title : SW846 8260
 QLast Update : Fri Aug 21 03:03:56 2020
 Response via : Initial Calibration

Internal Standards	R.T.	QIon	Response	Conc	Units	Dev(Min)
1) Pentafluorobenzene	5.63	168	423200	50.00	ug/l	0.00
34) 1,4-Difluorobenzene	6.83	114	700169	50.00	ug/l	0.00
63) Chlorobenzene-d5	10.10	117	689412	50.00	ug/l	0.00
72) 1,4-Dichlorobenzene-d4	12.06	152	340516	50.00	ug/l	0.00

System Monitoring Compounds

33) 1,2-Dichloroethane-d4	6.03	65	313108	53.29	ug/l	0.00
Spiked Amount	50.000		Recovery	=	106.58%	
35) Dibromofluoromethane	5.46	113	247218	51.84	ug/l	0.00
Spiked Amount	50.000		Recovery	=	103.68%	
50) Toluene-d8	8.70	98	883646	49.75	ug/l	0.00
Spiked Amount	50.000		Recovery	=	99.50%	
62) 4-Bromofluorobenzene	11.12	95	330766	47.34	ug/l	0.00
Spiked Amount	50.000		Recovery	=	94.68%	

Target Compounds

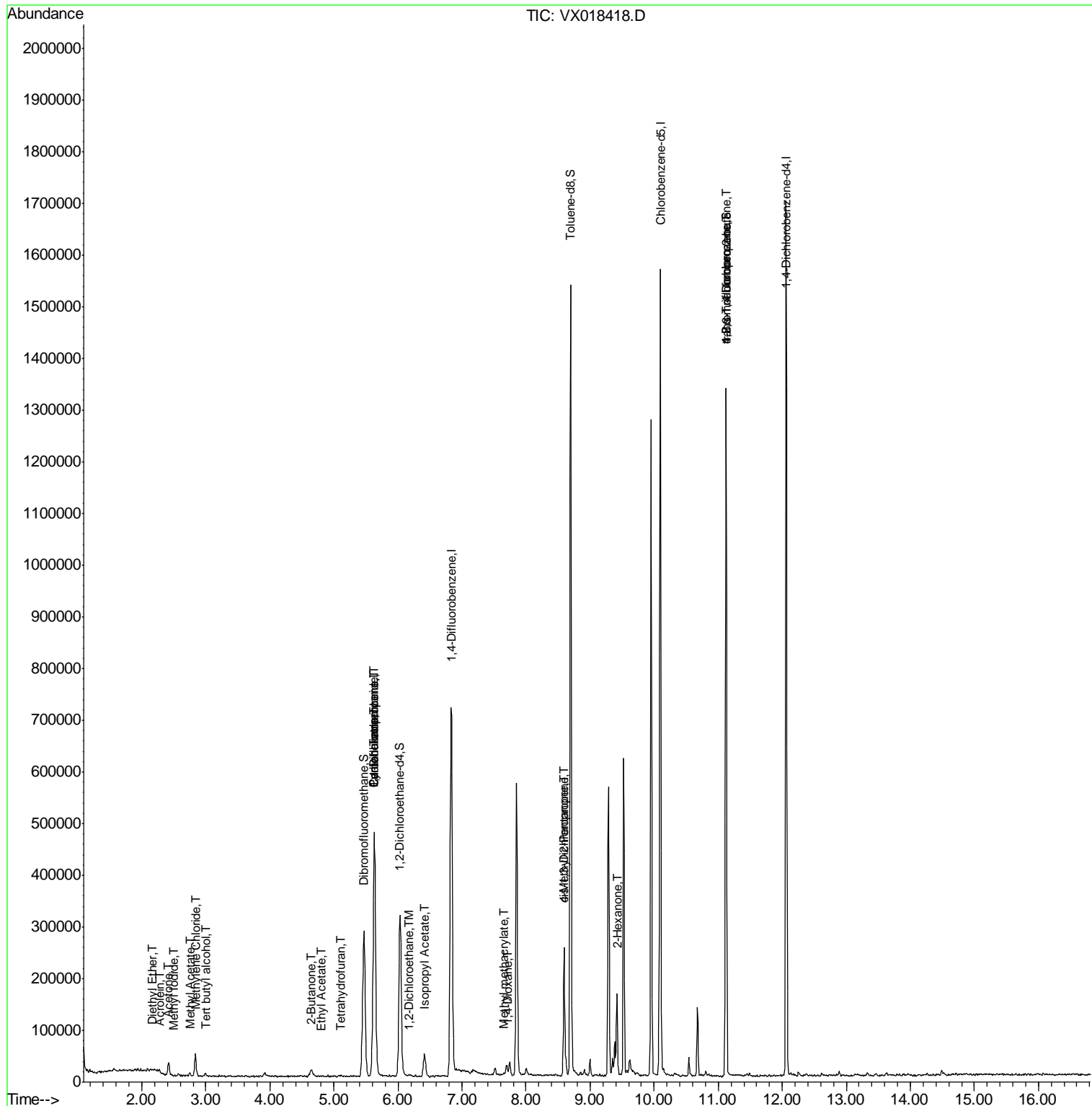
						Qvalue
8) Diethyl Ether	2.16	74	1149	0.459	ug/l	94
10) Methyl Iodide	2.50	142	353	5.361	ug/l #	78
11) Tert butyl alcohol	3.00	59	3166	2.772	ug/l #	78
13) Acrolein	2.28	56	601	1.269	ug/l #	14
16) Acetone	2.42	43	29039	12.685	ug/l	91
18) Methyl Acetate	2.75	43	6942	1.257	ug/l #	87
20) Methylene Chloride	2.84	84	19521	3.074	ug/l #	85
25) 2-Butanone	4.65	43	8416	2.237	ug/l #	85
29) Tetrahydrofuran	5.11	42	2367	0.988	ug/l #	51
31) Cyclohexane	5.64	56	9439	1.342	ug/l #	12
36) 1,1-Dichloropropene	5.63	75	32733	5.069	ug/l #	46
37) Ethyl Acetate	4.81	43	1788	0.238	ug/l #	86
38) Carbon Tetrachloride	5.64	117	45674	6.276	ug/l #	15
42) 1,2-Dichloroethane	6.16	62	1553	0.214	ug/l	93
43) Isopropyl Acetate	6.41	43	59188	4.886	ug/l	98
48) Methyl methacrylate	7.66	41	5637	0.935	ug/l #	15
49) 1,4-Dioxane	7.71	88	143	1.309	ug/l #	23
51) 4-Methyl-2-Pentanone	8.60	43	95662	12.783	ug/l #	44
54) cis-1,3-Dichloropropene	8.59	75	37636	4.464	ug/l #	64
59) 2-Hexanone	9.42	43	104146	18.302	ug/l #	25
76) 1,2,3-Trichloropropane	11.12	75	171565	22.649	ug/l #	36
81) trans-1,4-Dichloro-2-buten	11.12	75	171565	61.171	ug/l #	12

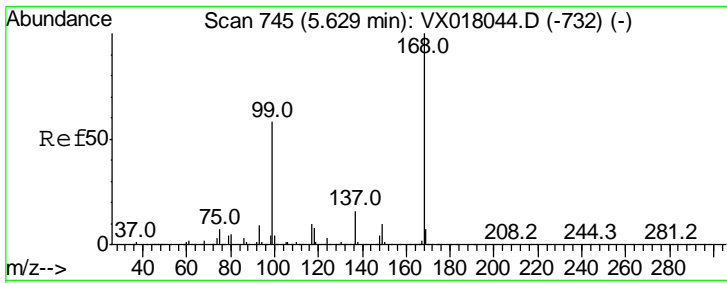
(#) = qualifier out of range (m) = manual integration (+) = signals summed

Data Path : Z:\VOASRV\HPCHEM1\MSVOA X\DATA\VX091520\
 Data File : VX018418.D
 Acq On : 15 Sep 2020 19:33
 Operator : JC/SP
 Sample : L3867-06
 Misc : 5.0mL/MSVOA X/WATER
 ALS Vial : 19 Sample Multiplier: 1

Instrument :
 MSVOA_X
 Client Sampled :
 EO-02-091420

Quant Time: Sep 16 03:39:19 2020
 Quant Method : Z:\VOASRV\HPCHEM1\MSVOA_X\METHOD\82X082120W.M
 Quant Title : SW846 8260
 QLast Update : Fri Aug 21 03:03:56 2020
 Response via : Initial Calibration

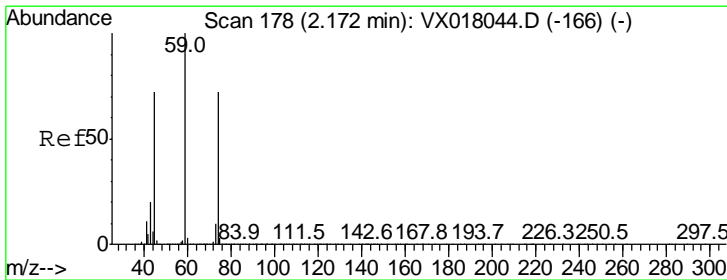
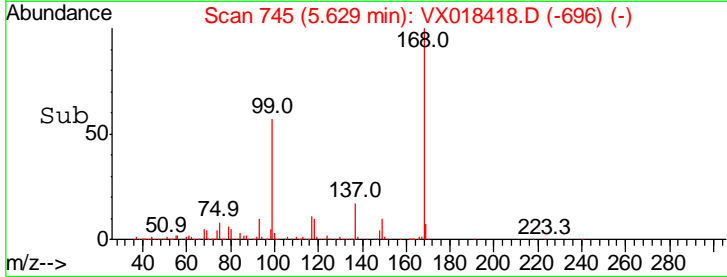
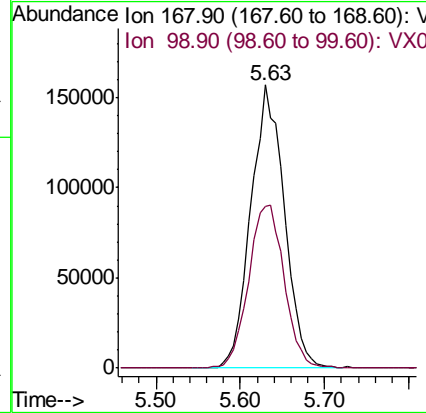
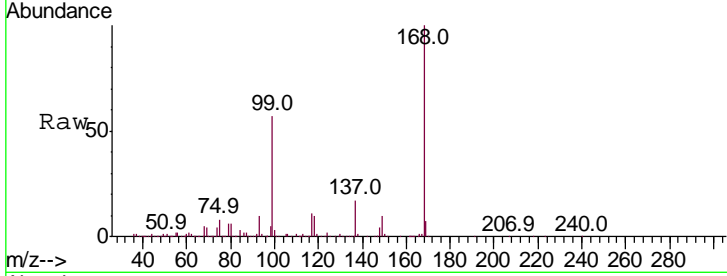




#1
 Pentafluorobenzene
 Concen: 50.000 ug/l
 RT: 5.63 min Scan# 745
 Delta R.T. -0.00 min
 Lab File: VX018418.D
 Acq: 15 Sep 2020 19:33

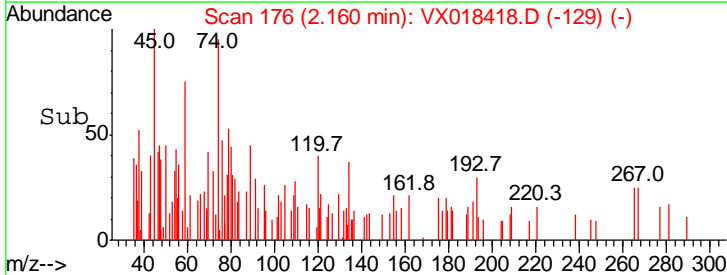
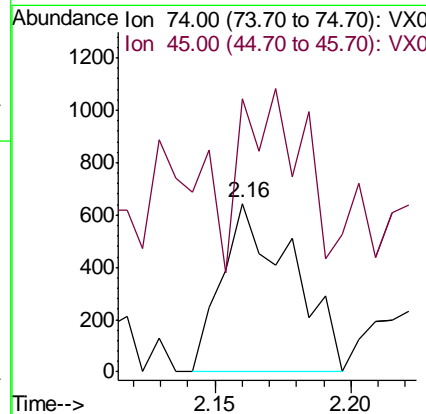
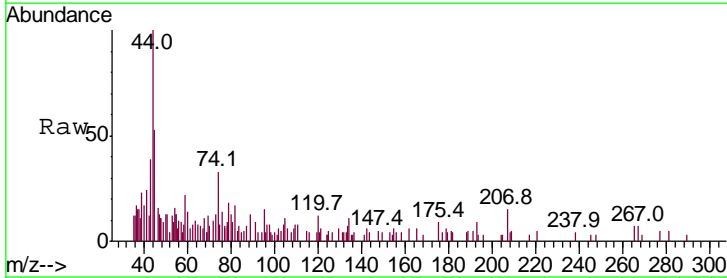
Instrument : MSVOA_X
 ClientSampled : EO-02-091420

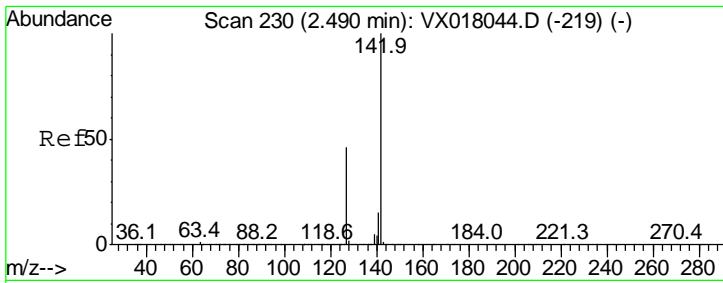
Tgt Ion	Resp	Lower	Upper
168	100		
99	57.1	46.3	69.5



#8
 Diethyl Ether
 Concen: 0.459 ug/l
 RT: 2.16 min Scan# 176
 Delta R.T. -0.01 min
 Lab File: VX018418.D
 Acq: 15 Sep 2020 19:33

Tgt Ion	Resp	Lower	Upper
74	100		
45	95.9	50.7	152.3

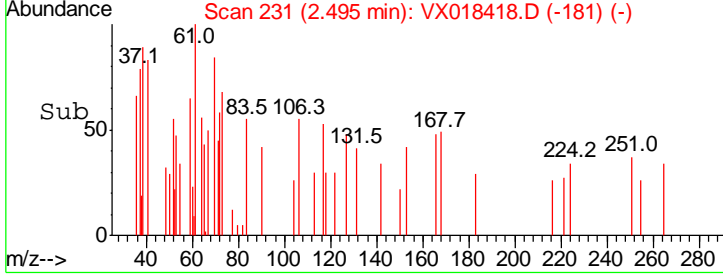
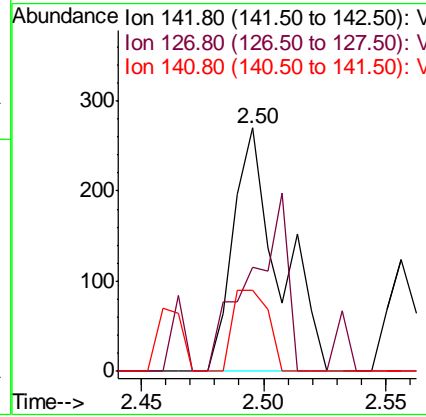
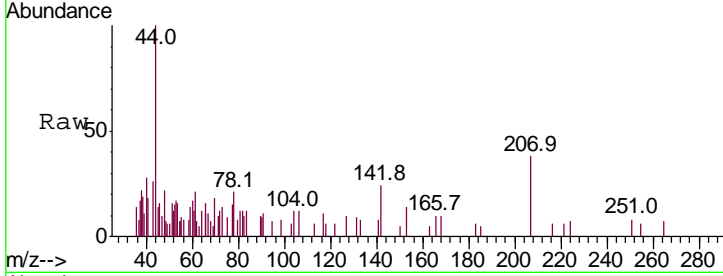




#10
 Methyl Iodide
 Concen: 5.361 ug/l
 RT: 2.50 min Scan# 231
 Delta R.T. 0.01 min
 Lab File: VX018418.D
 Acq: 15 Sep 2020 19:33

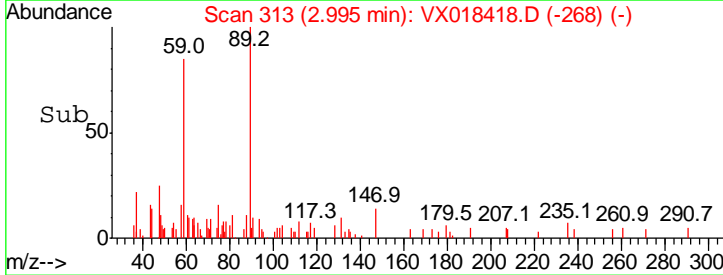
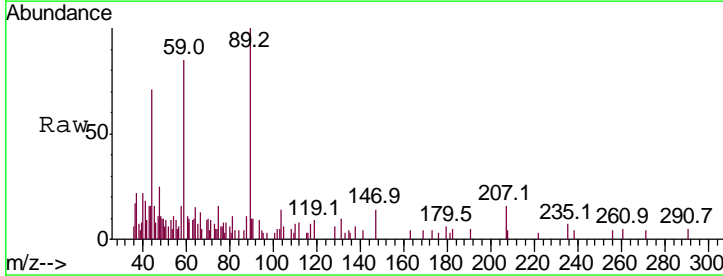
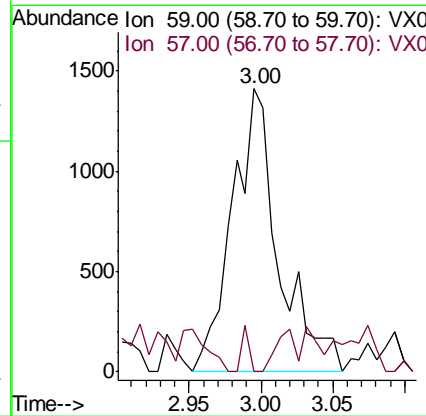
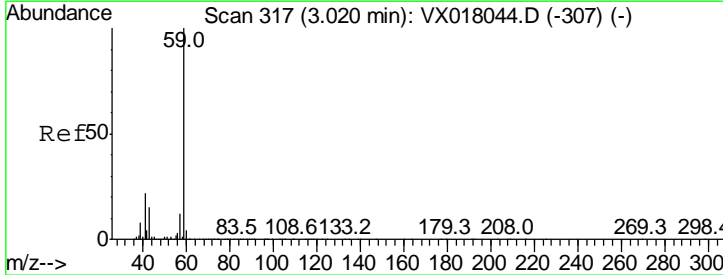
Instrument :
 MSVOA_X
 ClientSampled :
 EO-02-091420

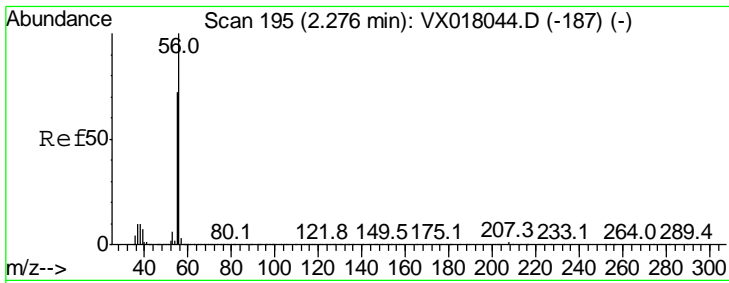
Tgt Ion	Ratio	Lower	Upper
142	100		
127	59.8	37.0	55.6#
141	25.8	11.5	17.3#



#11
 Tert butyl alcohol
 Concen: 2.772 ug/l
 RT: 3.00 min Scan# 313
 Delta R.T. -0.02 min
 Lab File: VX018418.D
 Acq: 15 Sep 2020 19:33

Tgt Ion	Ratio	Lower	Upper
59	100		
57	2.7	8.9	13.3#

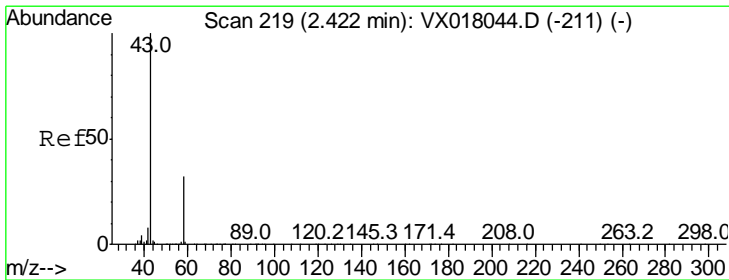
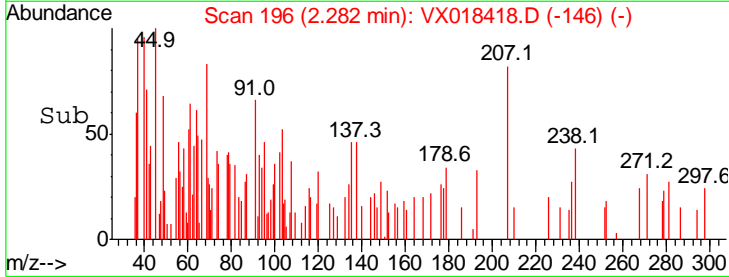
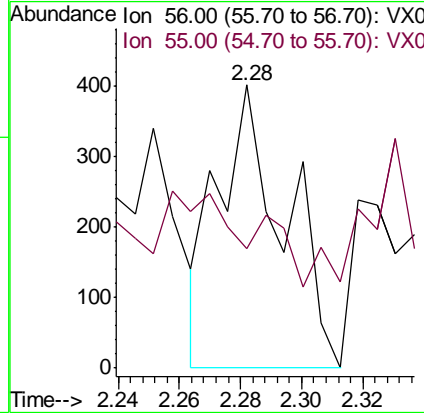
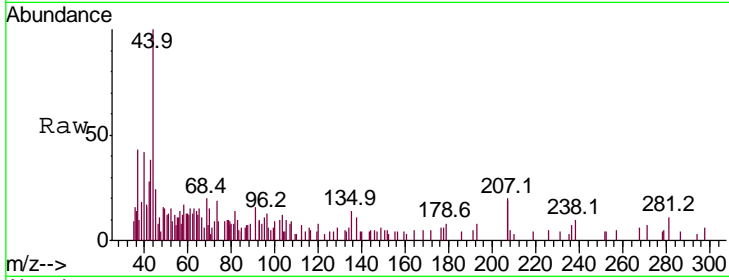




#13
 Acrolein
 Concen: 1.269 ug/l
 RT: 2.28 min Scan# 196
 Delta R.T. 0.01 min
 Lab File: VX018418.D
 Acq: 15 Sep 2020 19:33

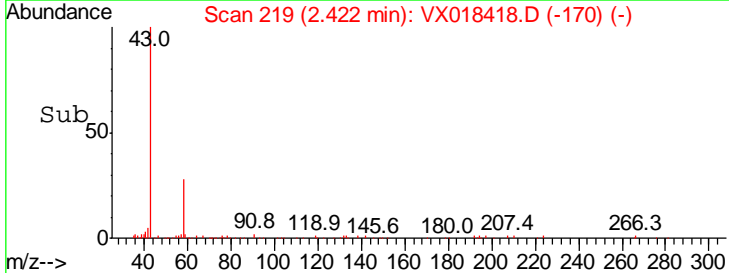
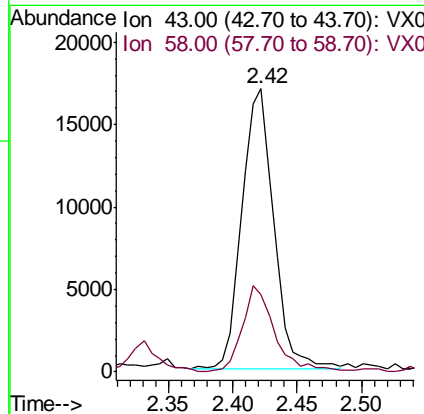
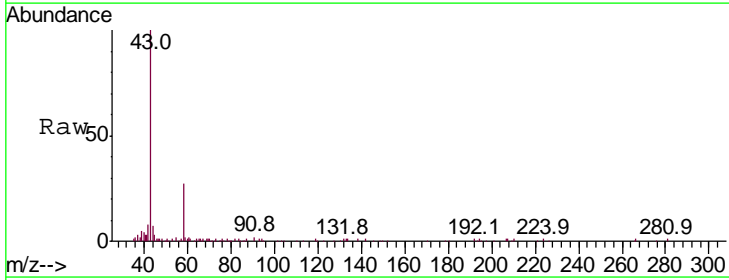
Instrument :
 MSVOA_X
 ClientSampleId :
 EO-02-091420

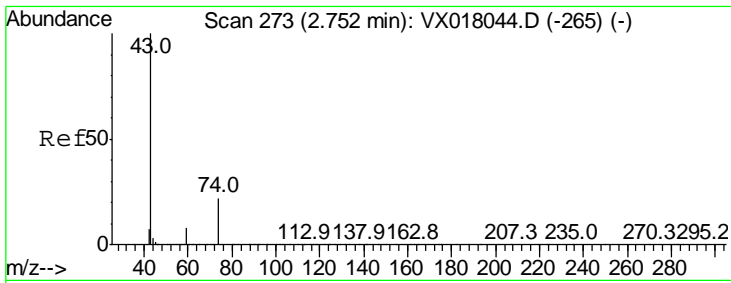
Tgt Ion	Resp	Lower	Upper
56	100		
55	0.0	57.0	85.6#



#16
 Acetone
 Concen: 12.685 ug/l
 RT: 2.42 min Scan# 219
 Delta R.T. -0.00 min
 Lab File: VX018418.D
 Acq: 15 Sep 2020 19:33

Tgt Ion	Resp	Lower	Upper
43	100		
58	27.0	25.5	38.3

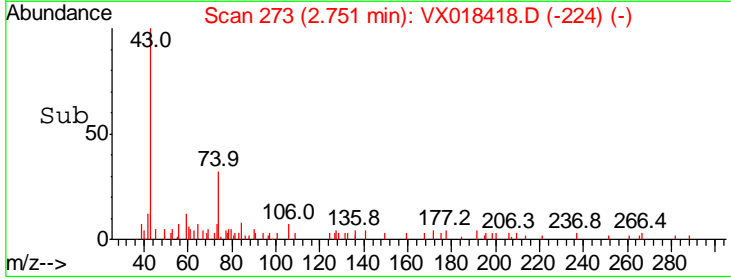
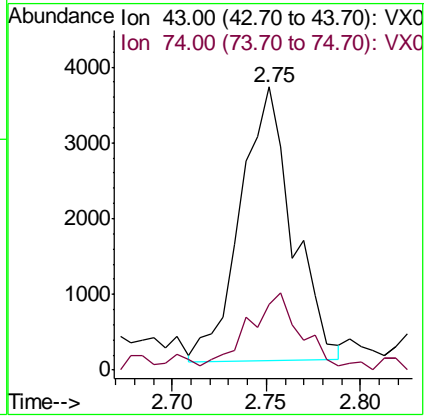
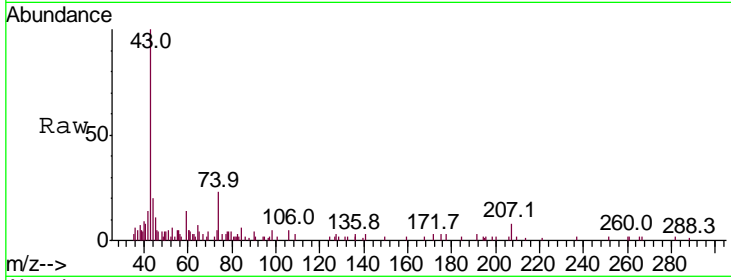




#18
 Methyl Acetate
 Concen: 1.257 ug/l
 RT: 2.75 min Scan# 273
 Delta R.T. -0.00 min
 Lab File: VX018418.D
 Acq: 15 Sep 2020 19:33

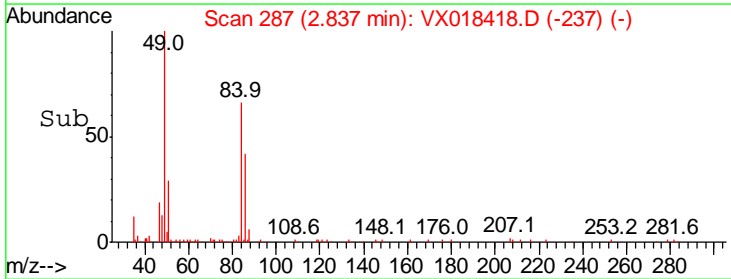
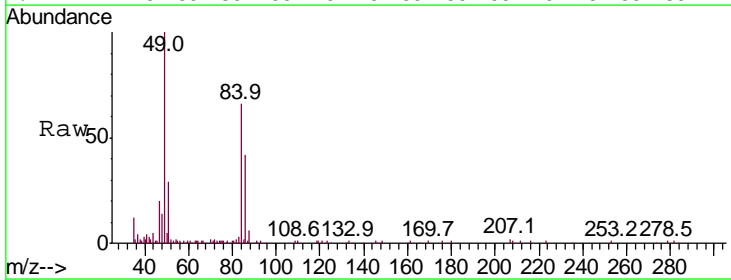
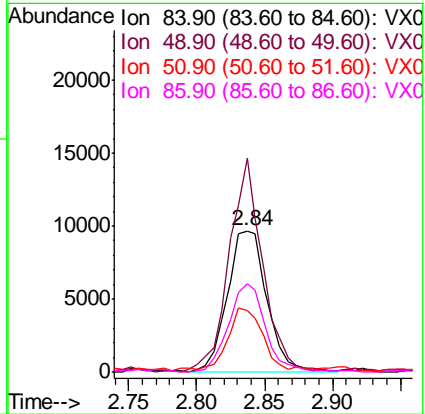
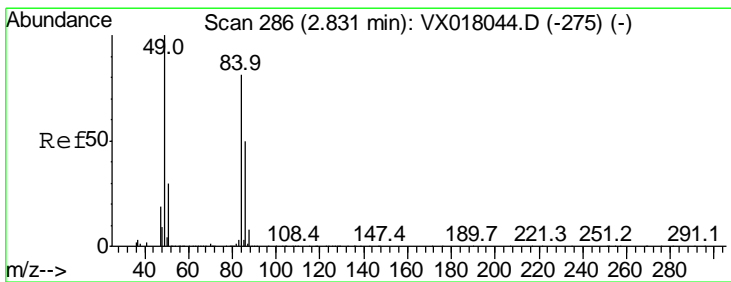
Instrument : MSVOA_X
 ClientSampled : EO-02-091420

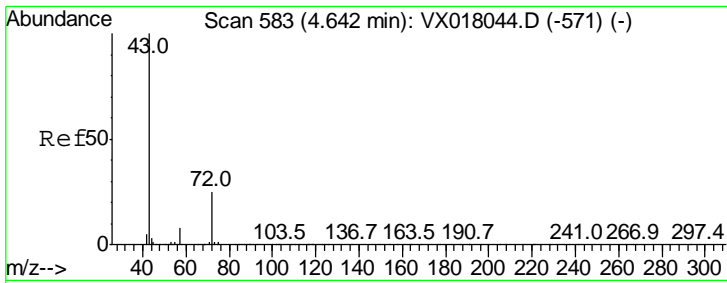
Tgt Ion	Ratio	Lower	Upper
43	100		
74	29.1	18.2	27.4#



#20
 Methylene Chloride
 Concen: 3.074 ug/l
 RT: 2.84 min Scan# 287
 Delta R.T. 0.01 min
 Lab File: VX018418.D
 Acq: 15 Sep 2020 19:33

Tgt Ion	Ratio	Lower	Upper
84	100		
49	150.4	98.6	148.0#
51	41.0	29.6	44.4
86	63.0	49.8	74.6

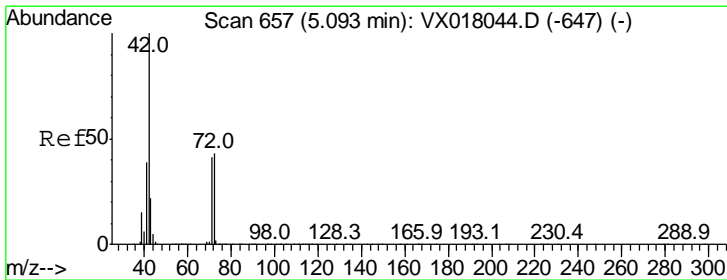
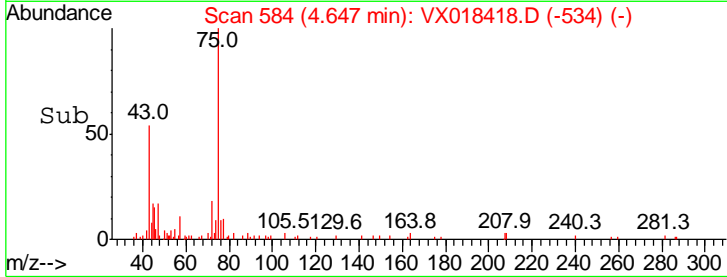
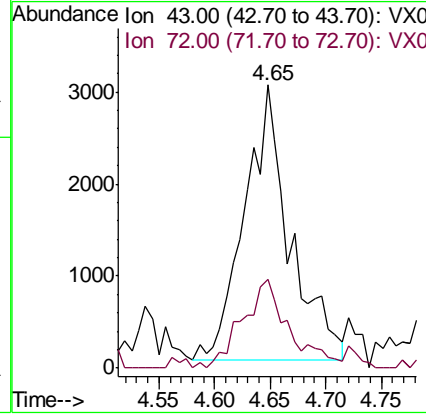
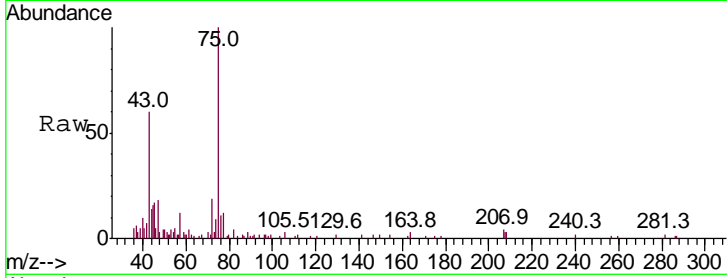




#25
 2-Butanone
 Concen: 2.237 ug/l
 RT: 4.65 min Scan# 584
 Delta R.T. 0.01 min
 Lab File: VX018418.D
 Acq: 15 Sep 2020 19:33

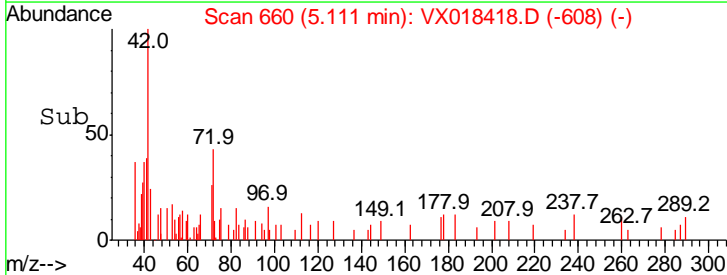
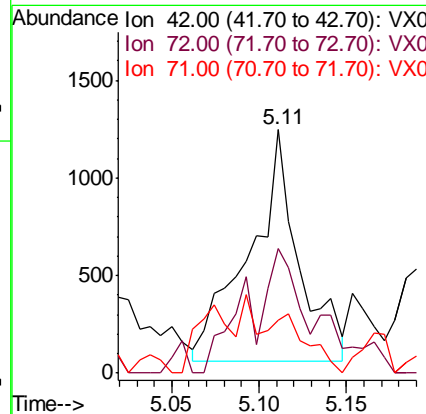
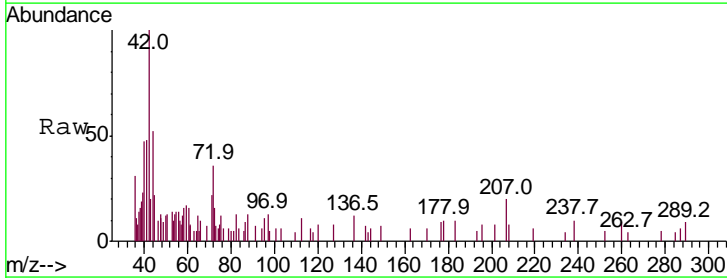
Instrument :
 MSVOA_X
 ClientSampled :
 EO-02-091420

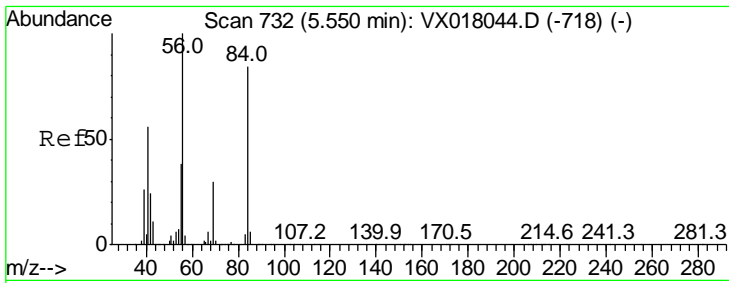
Tgt Ion	Ratio	Lower	Upper
43	100		
72	32.4	19.8	29.6#



#29
 Tetrahydrofuran
 Concen: 0.988 ug/l
 RT: 5.11 min Scan# 660
 Delta R.T. 0.02 min
 Lab File: VX018418.D
 Acq: 15 Sep 2020 19:33

Tgt Ion	Ratio	Lower	Upper
42	100		
72	21.6	34.2	51.4#
71	0.0	32.1	48.1#

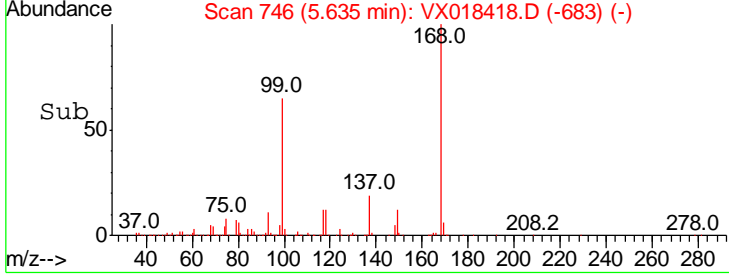
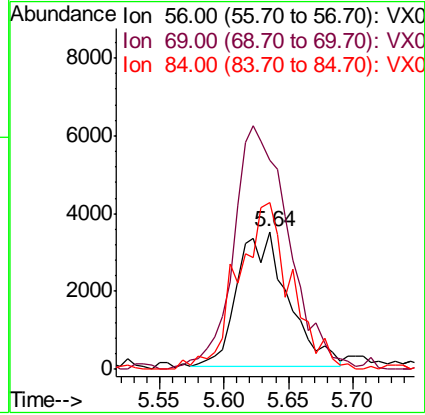
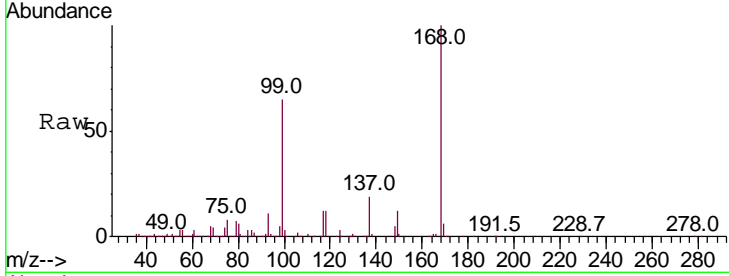




#31
 Cyclohexane
 Concen: 1.342 ug/l
 RT: 5.64 min Scan# 746
 Delta R.T. 0.09 min
 Lab File: VX018418.D
 Acq: 15 Sep 2020 19:33

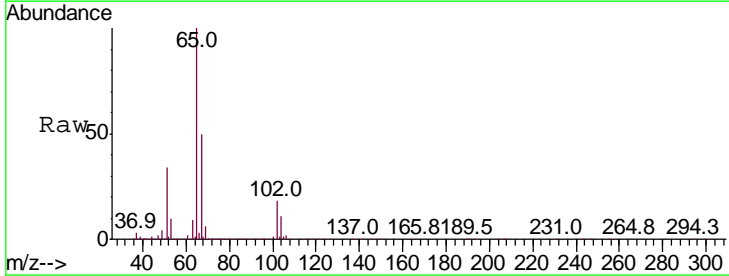
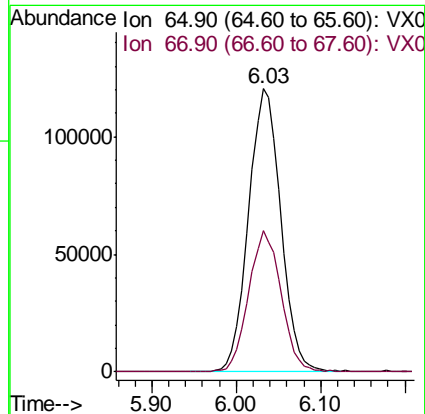
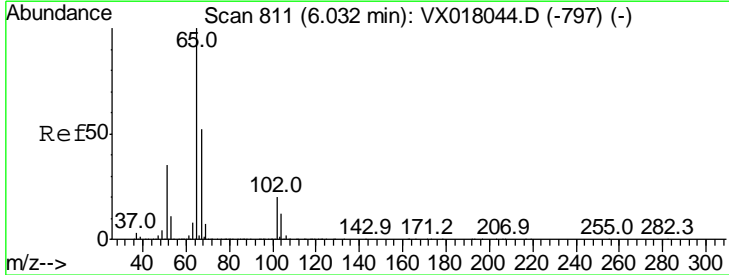
Instrument :
 MSVOA_X
ClientSampled :
 EO-02-091420

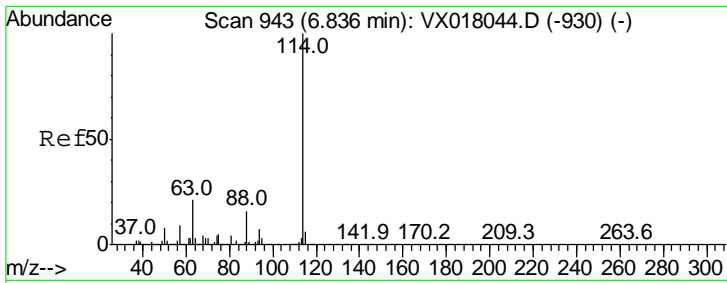
Tgt Ion	Resp	Lower	Upper
56	100		
69	148.6	23.9	35.9#
84	120.9	67.0	100.4#



#33
 1,2-Dichloroethane-d4
 Concen: 53.294 ug/l
 RT: 6.03 min Scan# 811
 Delta R.T. -0.00 min
 Lab File: VX018418.D
 Acq: 15 Sep 2020 19:33

Tgt Ion	Resp	Lower	Upper
65	100		
67	49.9	0.0	105.8

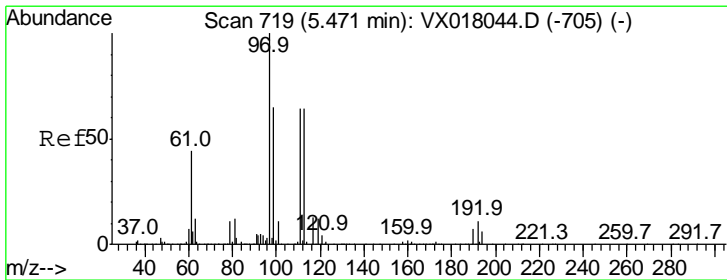
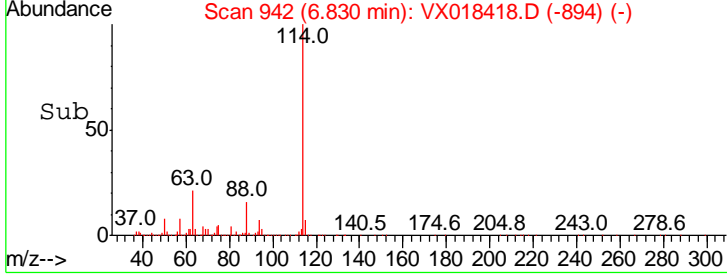
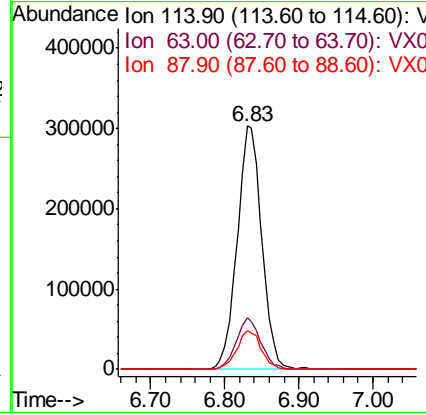
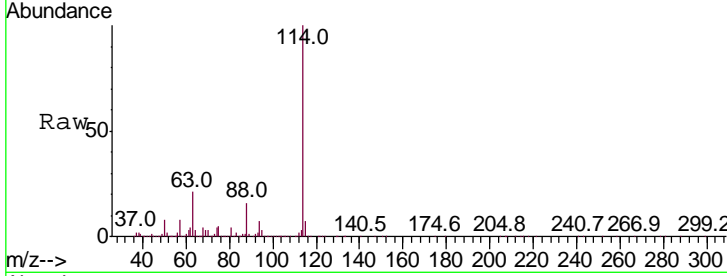




#34
 1,4-Difluorobenzene
 Concen: 50.000 ug/l
 RT: 6.83 min Scan# 942
 Delta R.T. -0.01 min
 Lab File: VX018418.D
 Acq: 15 Sep 2020 19:33

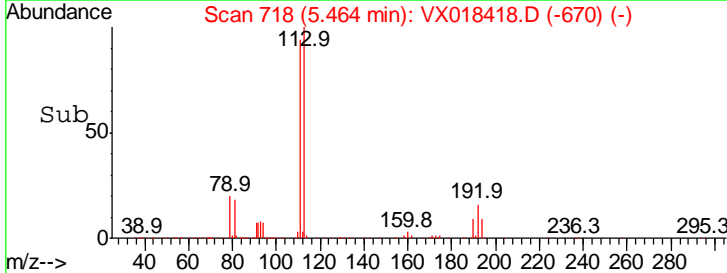
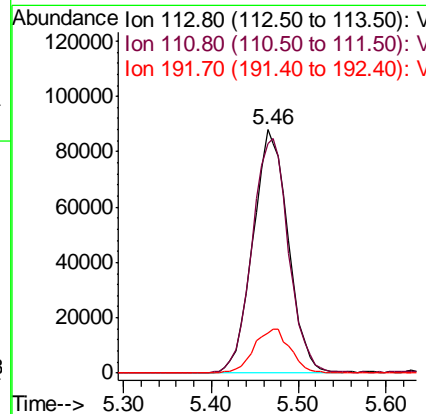
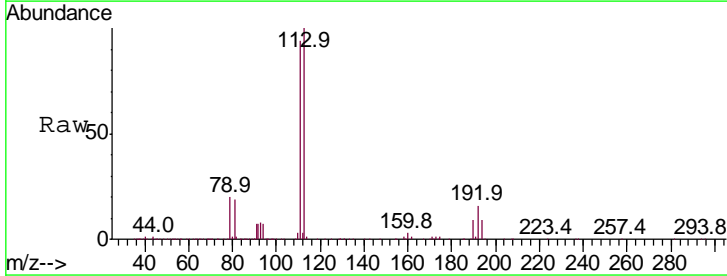
Instrument : MSVOA_X
 ClientSampleId : EO-02-091420

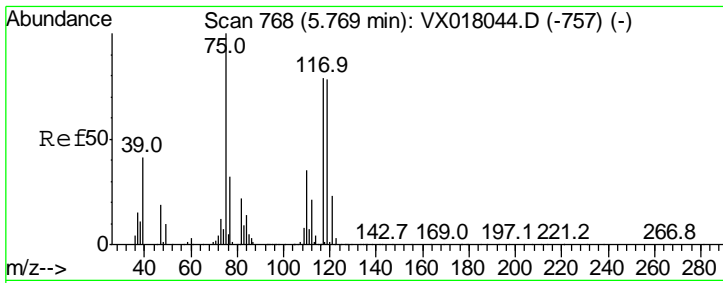
Tgt Ion	Resp	Lower	Upper
114	100		
63	21.1	0.0	42.6
88	16.0	0.0	31.8



#35
 Dibromofluoromethane
 Concen: 51.844 ug/l
 RT: 5.46 min Scan# 718
 Delta R.T. -0.01 min
 Lab File: VX018418.D
 Acq: 15 Sep 2020 19:33

Tgt Ion	Resp	Lower	Upper
113	100		
111	99.6	81.6	122.4
192	18.7	15.8	23.8

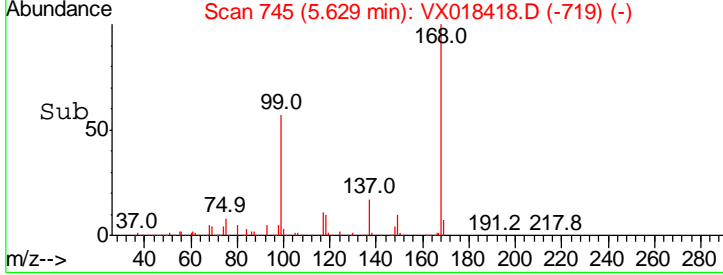
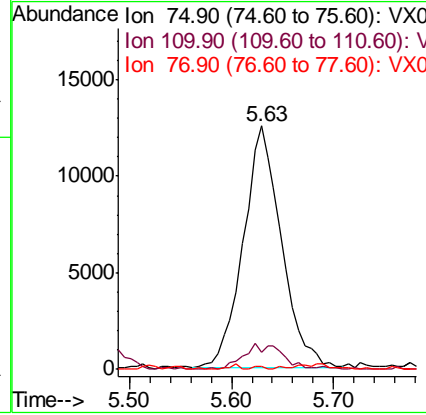
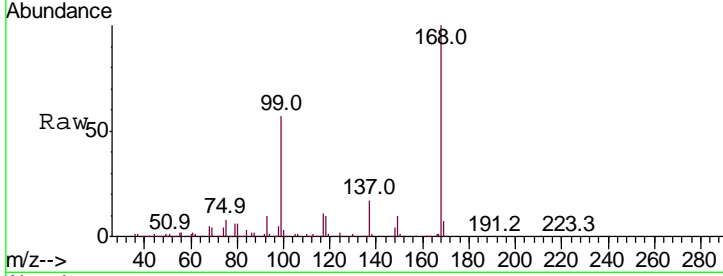




#36
 1,1-Dichloropropene
 Concen: 5.069 ug/l
 RT: 5.63 min Scan# 745
 Delta R.T. -0.14 min
 Lab File: VX018418.D
 Acq: 15 Sep 2020 19:33

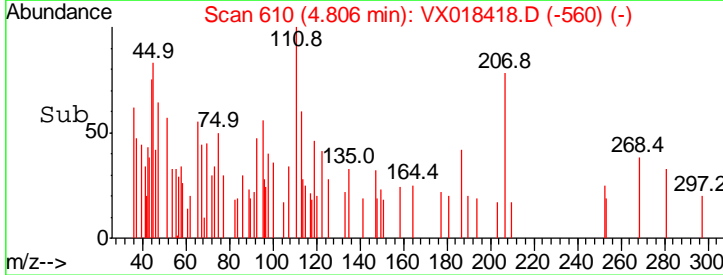
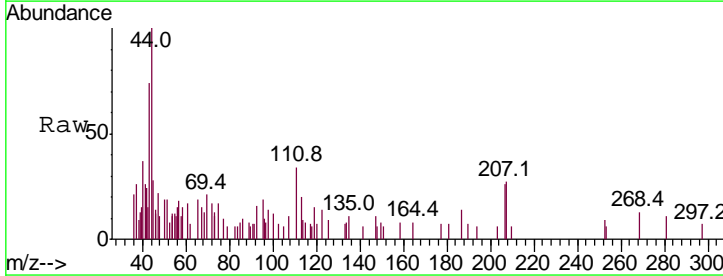
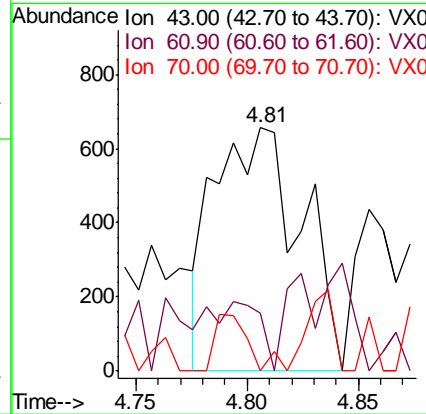
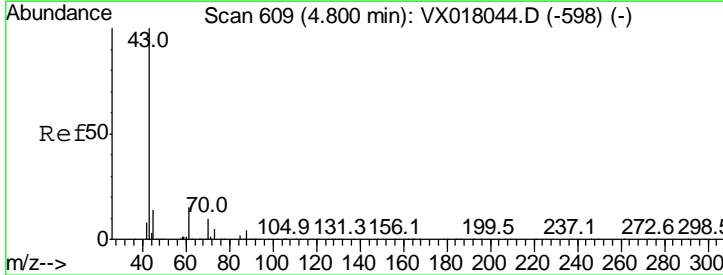
Instrument :
 MSVOA_X
ClientSampled :
 EO-02-091420

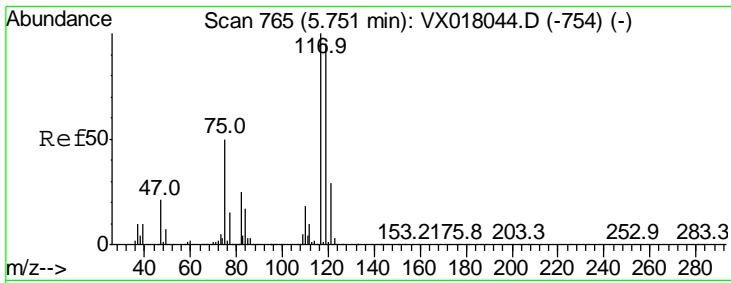
Tgt Ion	Resp	Lower	Upper
75	32733		
110	5.1	18.0	54.0#
77	0.3	24.4	36.6#



#37
 Ethyl Acetate
 Concen: 0.238 ug/l
 RT: 4.81 min Scan# 610
 Delta R.T. 0.01 min
 Lab File: VX018418.D
 Acq: 15 Sep 2020 19:33

Tgt Ion	Resp	Lower	Upper
43	1788		
61	12.2	11.3	16.9
70	0.0	8.2	12.4#

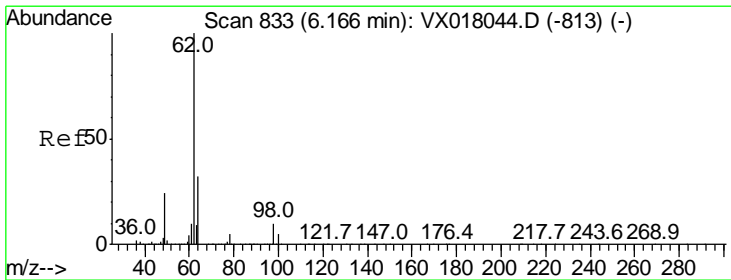
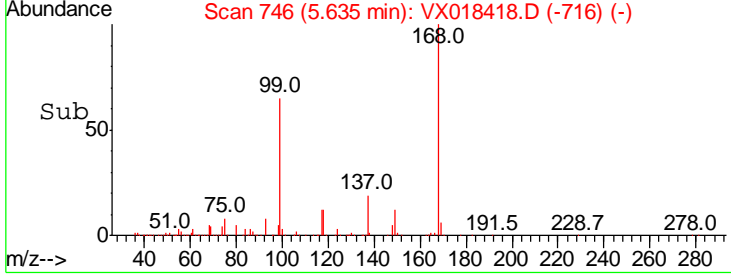
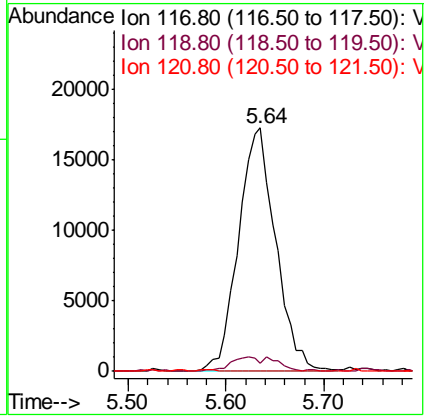
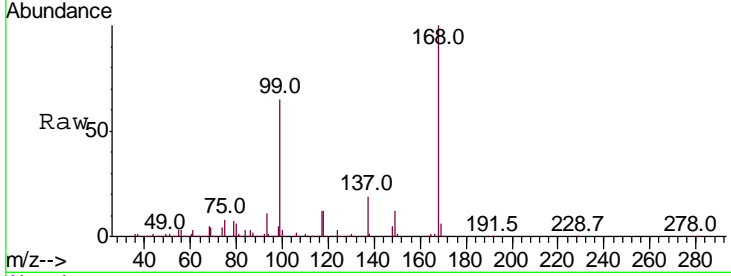




#38
 Carbon Tetrachloride
 Concen: 6.276 ug/l
 RT: 5.64 min Scan# 746
 Delta R.T. -0.12 min
 Lab File: VX018418.D
 Acq: 15 Sep 2020 19:33

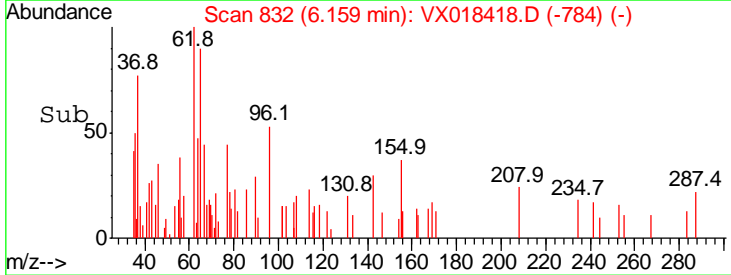
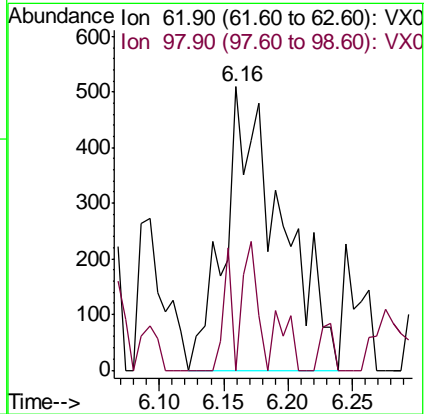
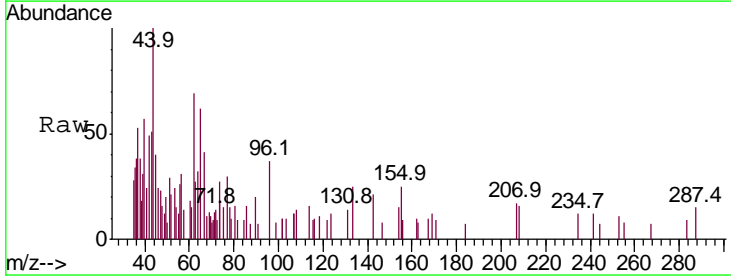
Instrument : MSVOA_X
 ClientSampled : EO-02-091420

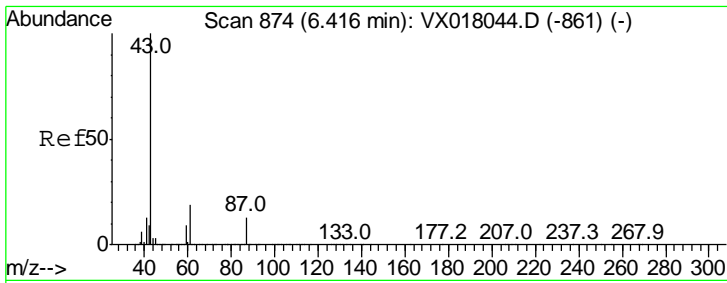
Tgt Ion	Resp	Lower	Upper
117	45674		
117	100		
119	3.2	75.8	113.6#
121	0.0	23.4	35.0#



#42
 1,2-Dichloroethane
 Concen: 0.214 ug/l
 RT: 6.16 min Scan# 832
 Delta R.T. -0.01 min
 Lab File: VX018418.D
 Acq: 15 Sep 2020 19:33

Tgt Ion	Resp	Lower	Upper
62	1553		
62	100		
98	6.4	0.0	18.2

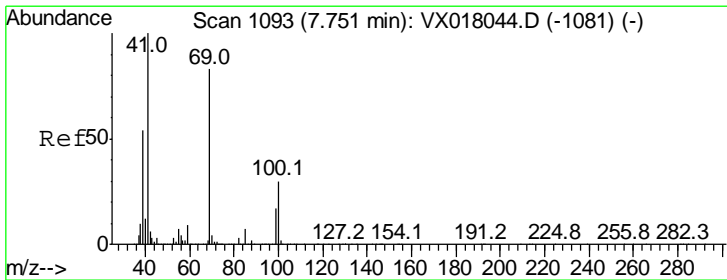
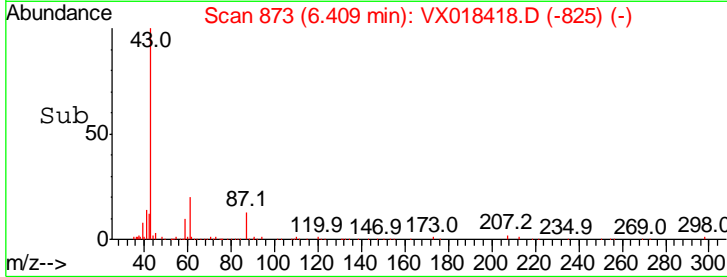
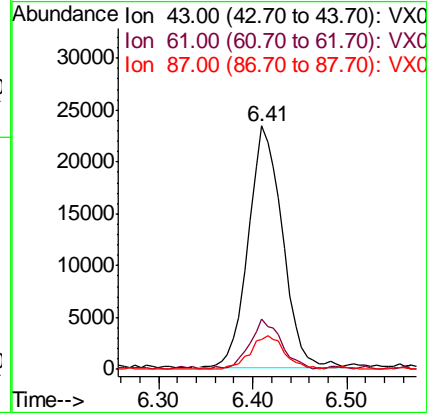
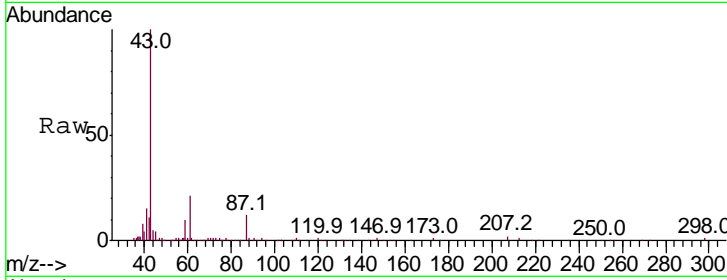




#43
 Isopropyl Acetate
 Concen: 4.886 ug/l
 RT: 6.41 min Scan# 873
 Delta R.T. -0.01 min
 Lab File: VX018418.D
 Acq: 15 Sep 2020 19:33

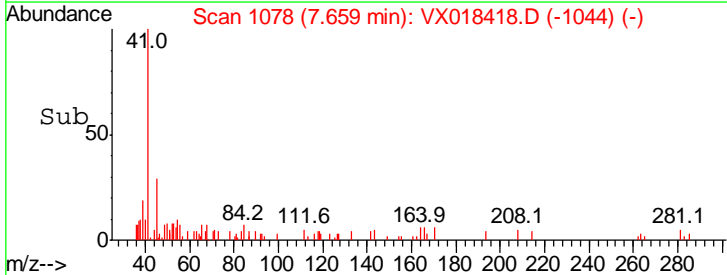
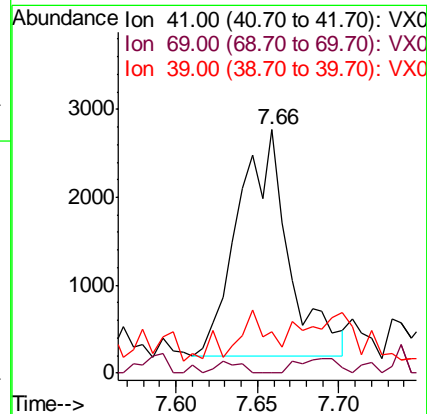
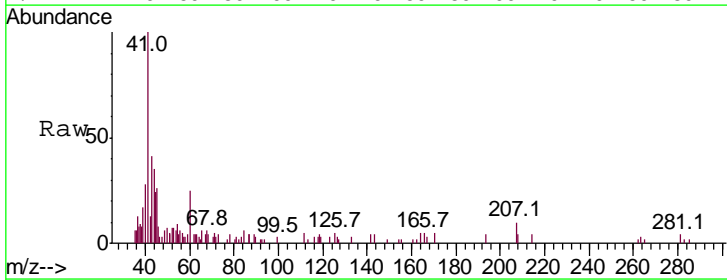
Instrument : MSVOA_X
 ClientSampled : EO-02-091420

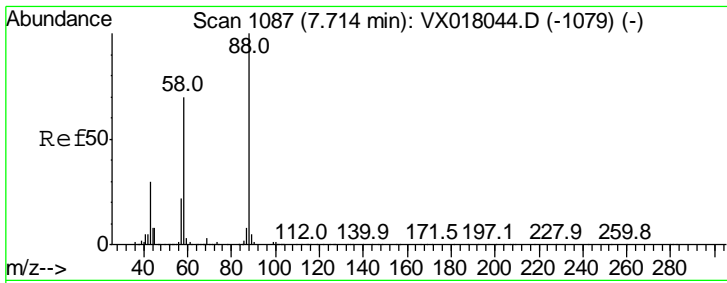
Tgt Ion	Resp	Lower	Upper
43	59188		
61	18.8	15.7	23.5
87	14.2	10.3	15.5



#48
 Methyl methacrylate
 Concen: 0.935 ug/l
 RT: 7.66 min Scan# 1078
 Delta R.T. -0.09 min
 Lab File: VX018418.D
 Acq: 15 Sep 2020 19:33

Tgt Ion	Resp	Lower	Upper
41	5637		
69	0.0	65.5	98.3#
39	0.0	44.5	66.7#

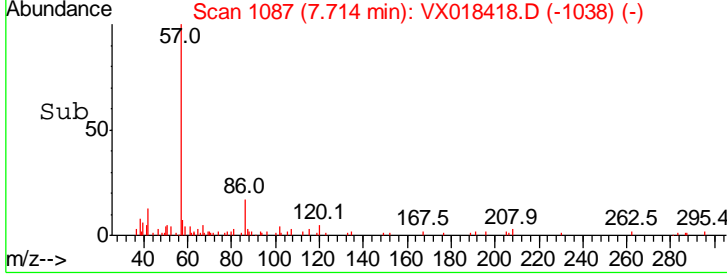
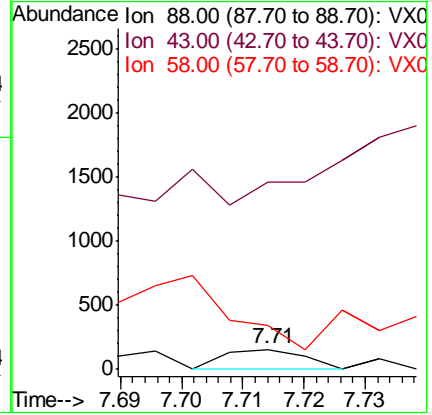
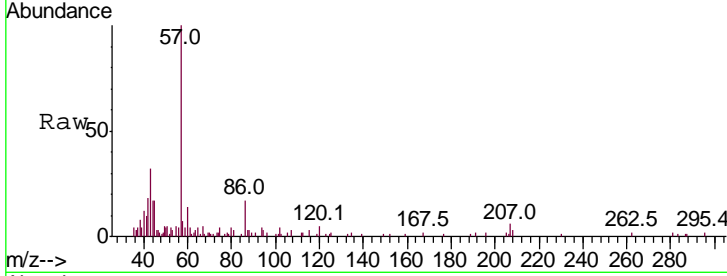




#49
 1,4-Dioxane
 Concen: 1.309 ug/l
 RT: 7.71 min Scan# 1087
 Delta R.T. -0.00 min
 Lab File: VX018418.D
 Acq: 15 Sep 2020 19:33

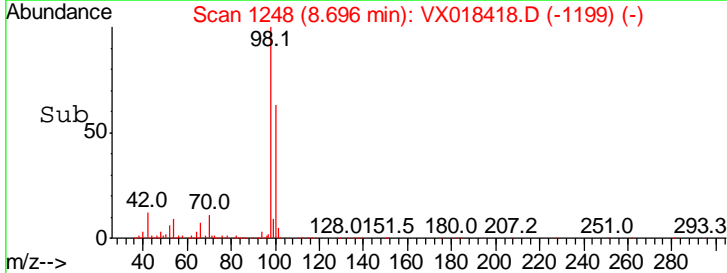
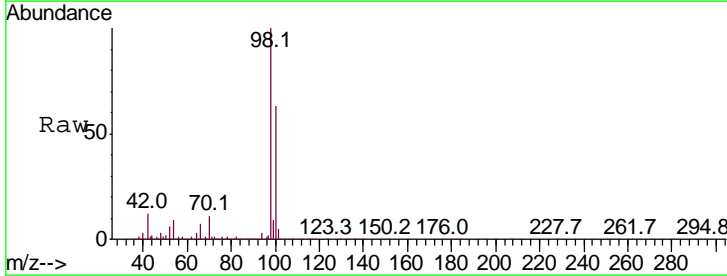
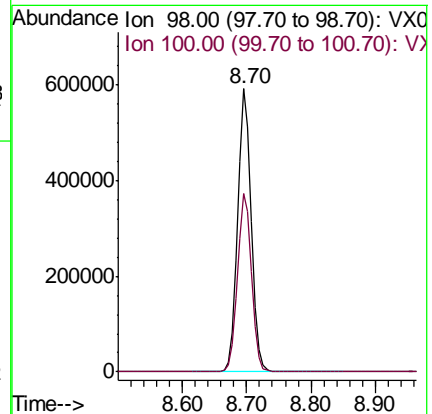
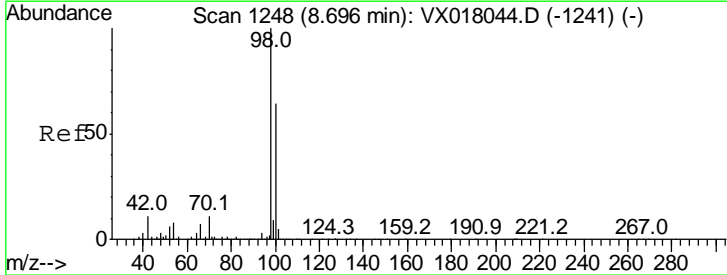
Instrument : MSVOA_X
 ClientSampled : EO-02-091420

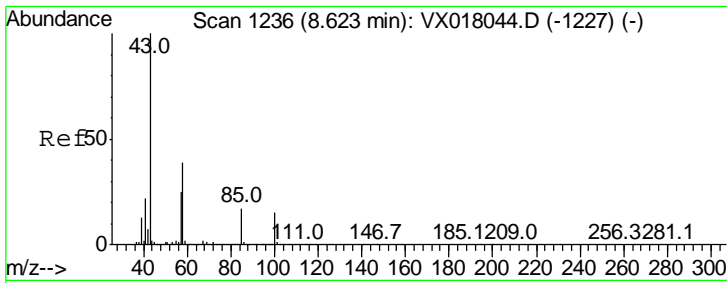
Tgt Ion	Ratio	Lower	Upper
88	100		
43	0.0	27.4	41.0#
58	0.0	56.4	84.6#



#50
 Toluene-d8
 Concen: 49.753 ug/l
 RT: 8.70 min Scan# 1248
 Delta R.T. -0.00 min
 Lab File: VX018418.D
 Acq: 15 Sep 2020 19:33

Tgt Ion	Ratio	Lower	Upper
98	100		
100	64.6	52.2	78.4

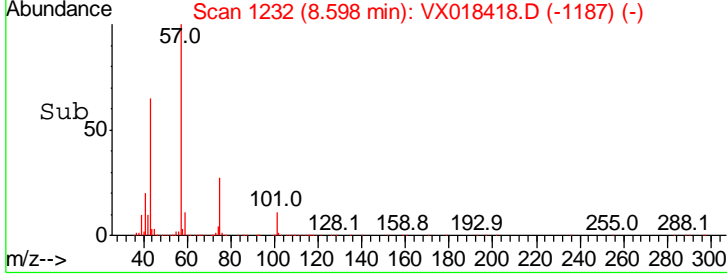
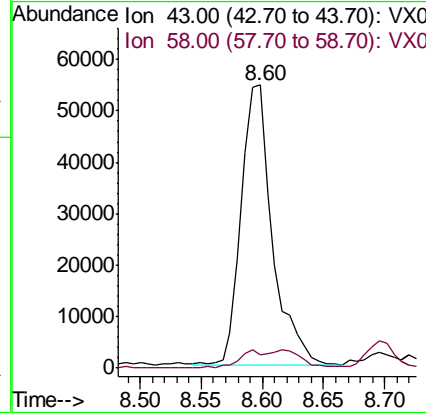
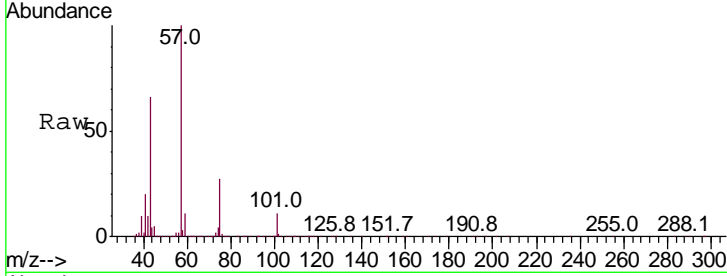




#51
 4-Methyl-2-Pentanone
 Concen: 12.783 ug/l
 RT: 8.60 min Scan# 1232
 Delta R.T. -0.02 min
 Lab File: VX018418.D
 Acq: 15 Sep 2020 19:33

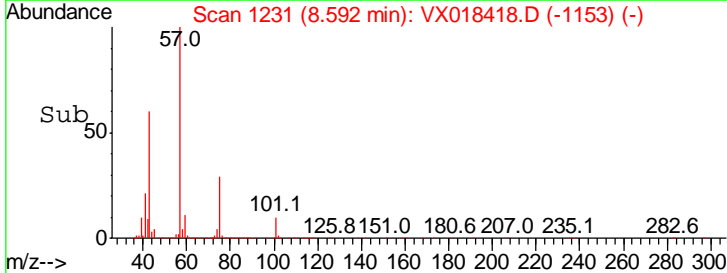
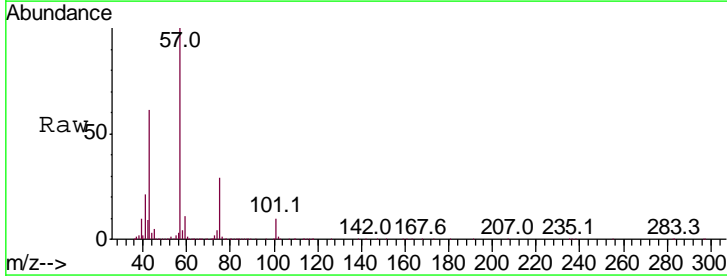
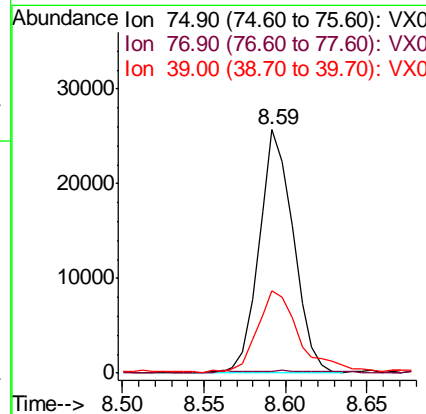
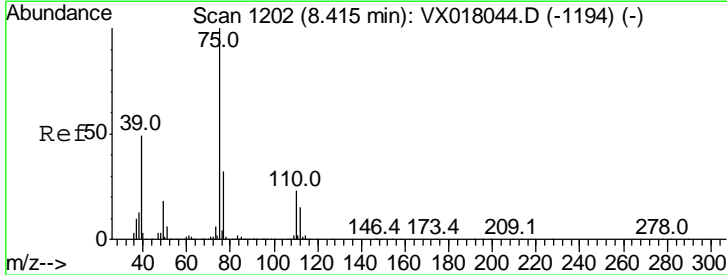
Instrument : MSVOA_X
 ClientSampleId : EO-02-091420

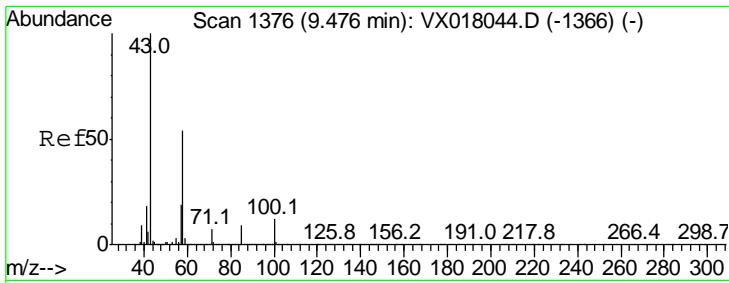
Tgt Ion	Resp	Lower	Upper
43	100		
58	4.5	30.7	46.1#



#54
 cis-1,3-Dichloropropene
 Concen: 4.464 ug/l
 RT: 8.59 min Scan# 1231
 Delta R.T. 0.18 min
 Lab File: VX018418.D
 Acq: 15 Sep 2020 19:33

Tgt Ion	Resp	Lower	Upper
75	100		
77	0.5	25.8	38.8#
39	33.4	38.8	58.2#

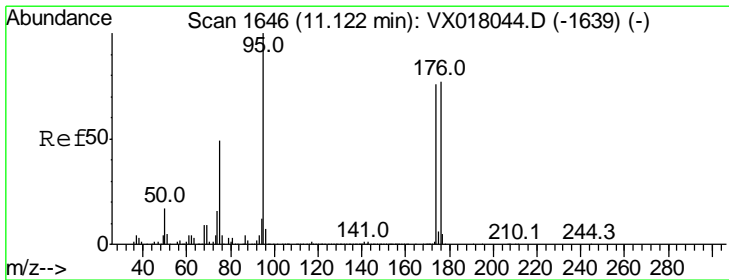
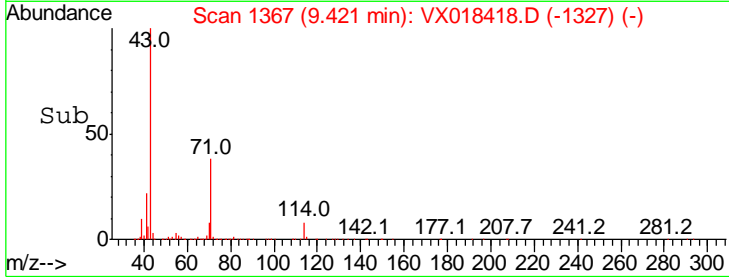
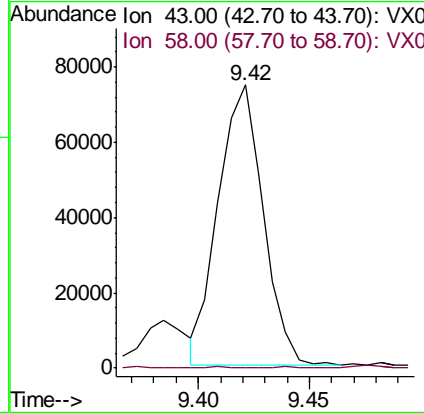
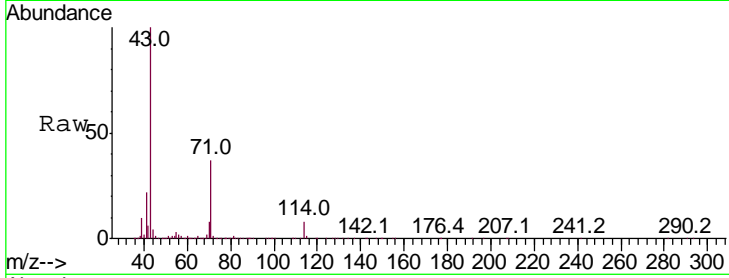




#59
 2-Hexanone
 Concen: 18.302 ug/l
 RT: 9.42 min Scan# 1367
 Delta R.T. -0.06 min
 Lab File: VX018418.D
 Acq: 15 Sep 2020 19:33

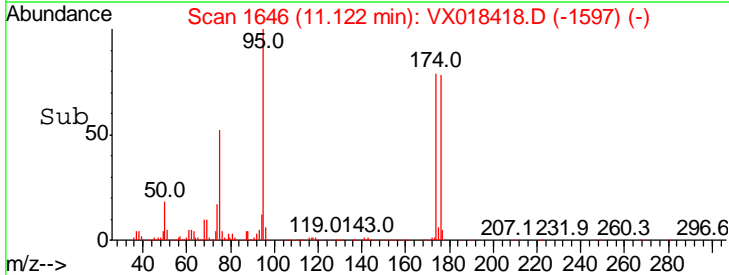
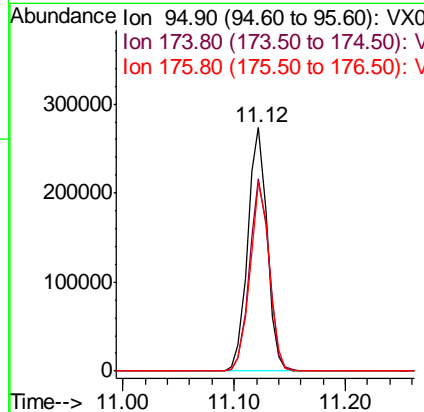
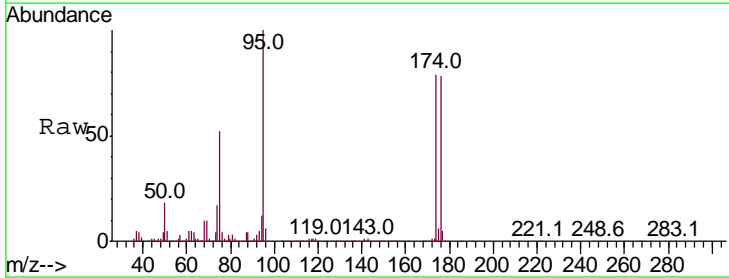
Instrument :
 MSVOA_X
 ClientSampled :
 EO-02-091420

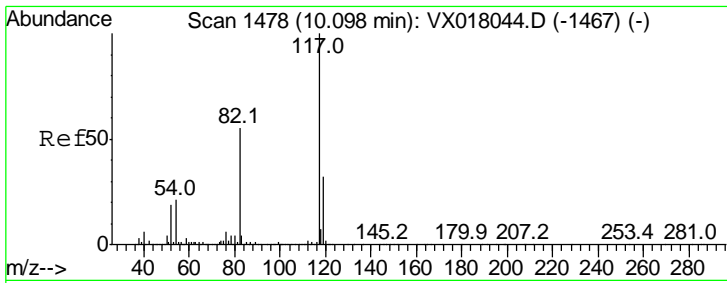
Tgt Ion: 43 Resp: 104146
 Ion Ratio Lower Upper
 43 100
 58 0.0 26.6 79.7#



#62
 4-Bromofluorobenzene
 Concen: 47.335 ug/l
 RT: 11.12 min Scan# 1646
 Delta R.T. -0.00 min
 Lab File: VX018418.D
 Acq: 15 Sep 2020 19:33

Tgt Ion: 95 Resp: 330766
 Ion Ratio Lower Upper
 95 100
 174 79.7 0.0 160.2
 176 77.3 0.0 155.8

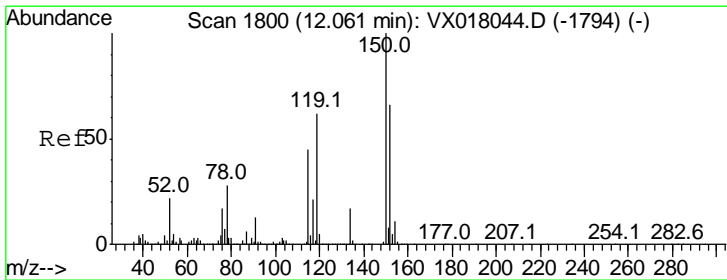
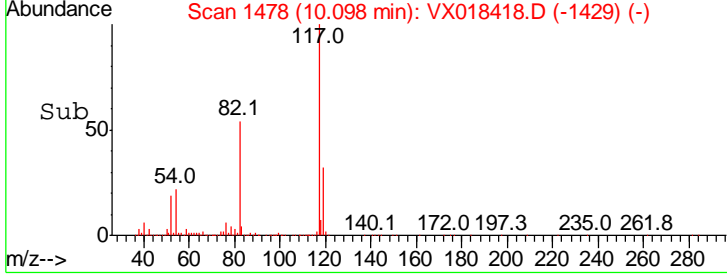
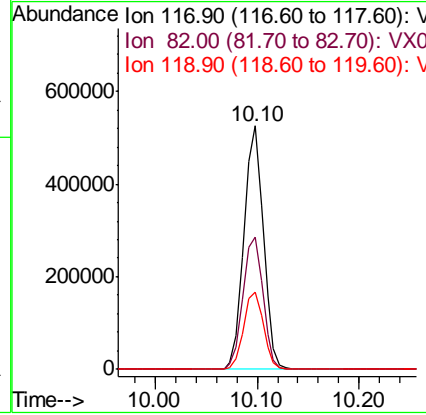
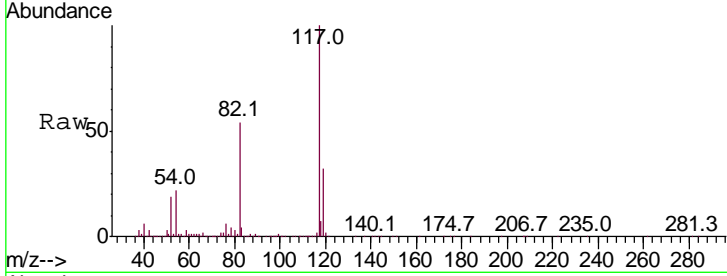




#63
 Chlorobenzene-d5
 Concen: 50.000 ug/l
 RT: 10.10 min Scan# 1478
 Delta R.T. -0.00 min
 Lab File: VX018418.D
 Acq: 15 Sep 2020 19:33

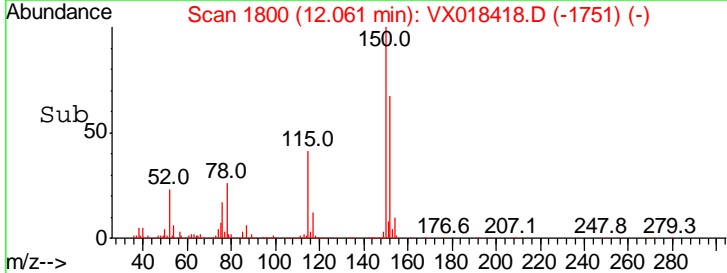
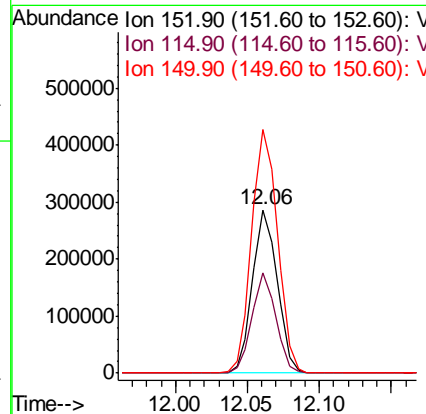
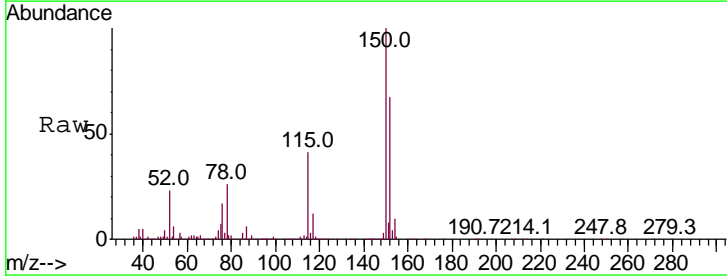
Instrument : MSVOA_X
 ClientSampled : EO-02-091420

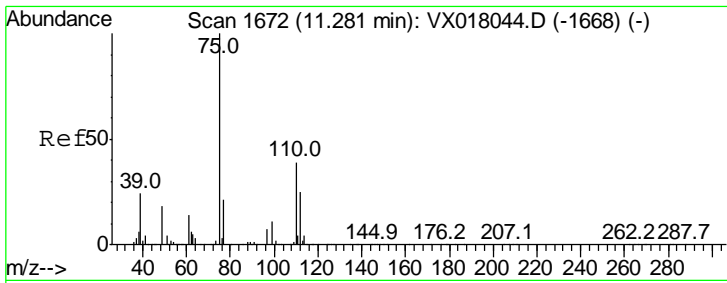
Tgt Ion	Resp	Lower	Upper
117	689412		
82	54.4	44.2	66.2
119	31.9	25.7	38.5



#72
 1,4-Dichlorobenzene-d4
 Concen: 50.000 ug/l
 RT: 12.06 min Scan# 1800
 Delta R.T. -0.00 min
 Lab File: VX018418.D
 Acq: 15 Sep 2020 19:33

Tgt Ion	Resp	Lower	Upper
152	340516		
115	59.6	41.5	124.5
150	155.9	0.0	343.8

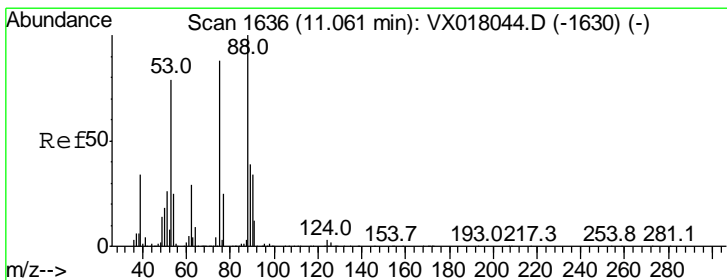
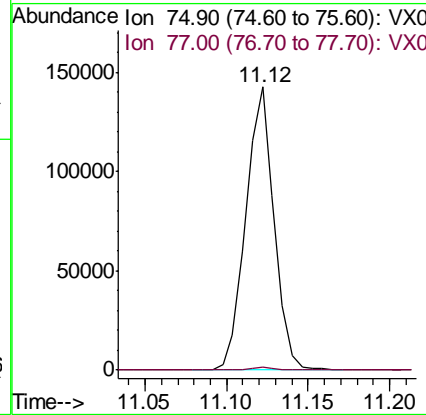
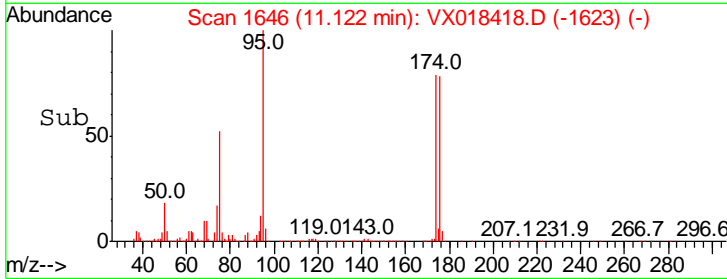
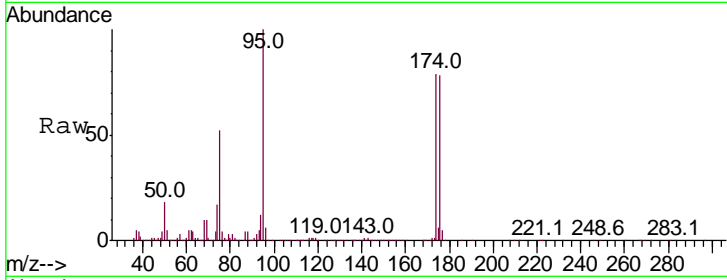




#76
 1,2,3-Trichloropropane
 Concen: 22.649 ug/l
 RT: 11.12 min Scan# 1646
 Delta R.T. -0.16 min
 Lab File: VX018418.D
 Acq: 15 Sep 2020 19:33

Instrument :
 MSVOA_X
 ClientSampled :
 EO-02-091420

Tgt Ion: 75 Resp: 171565
 Ion Ratio Lower Upper
 75 100
 77 1.2 20.8 62.2#



#81
 trans-1,4-Dichloro-2-butene
 Concen: 61.171 ug/l
 RT: 11.12 min Scan# 1646
 Delta R.T. 0.06 min
 Lab File: VX018418.D
 Acq: 15 Sep 2020 19:33

Tgt Ion: 75 Resp: 171565
 Ion Ratio Lower Upper
 75 100
 53 0.3 74.7 112.1#
 89 0.0 36.6 54.8#

