

Data Path : Z:\voasrv\HPCHEM1\MSVOA_X\Data\VX091521\
 Data File : VX024251.D
 Acq On : 15 Sep 2021 11:11
 Operator : JC/MD
 Sample : VX0915WBL01
 Misc : 5.0mL/MSVOA_X/WATER
 ALS Vial : 4 Sample Multiplier: 1

Instrument :
 MSVOA_X
 ClientSampleId :
 VX0915WBL01

Quant Time: Sep 16 04:40:20 2021
 Quant Method : Z:\voasrv\HPCHEM1\MSVOA_X\Method\82X091421W.M
 Quant Title : SW846 8260
 QLast Update : Tue Sep 14 12:18:04 2021
 Response via : Initial Calibration

Compound	R.T.	QIon	Response	Conc	Units	Dev(Min)

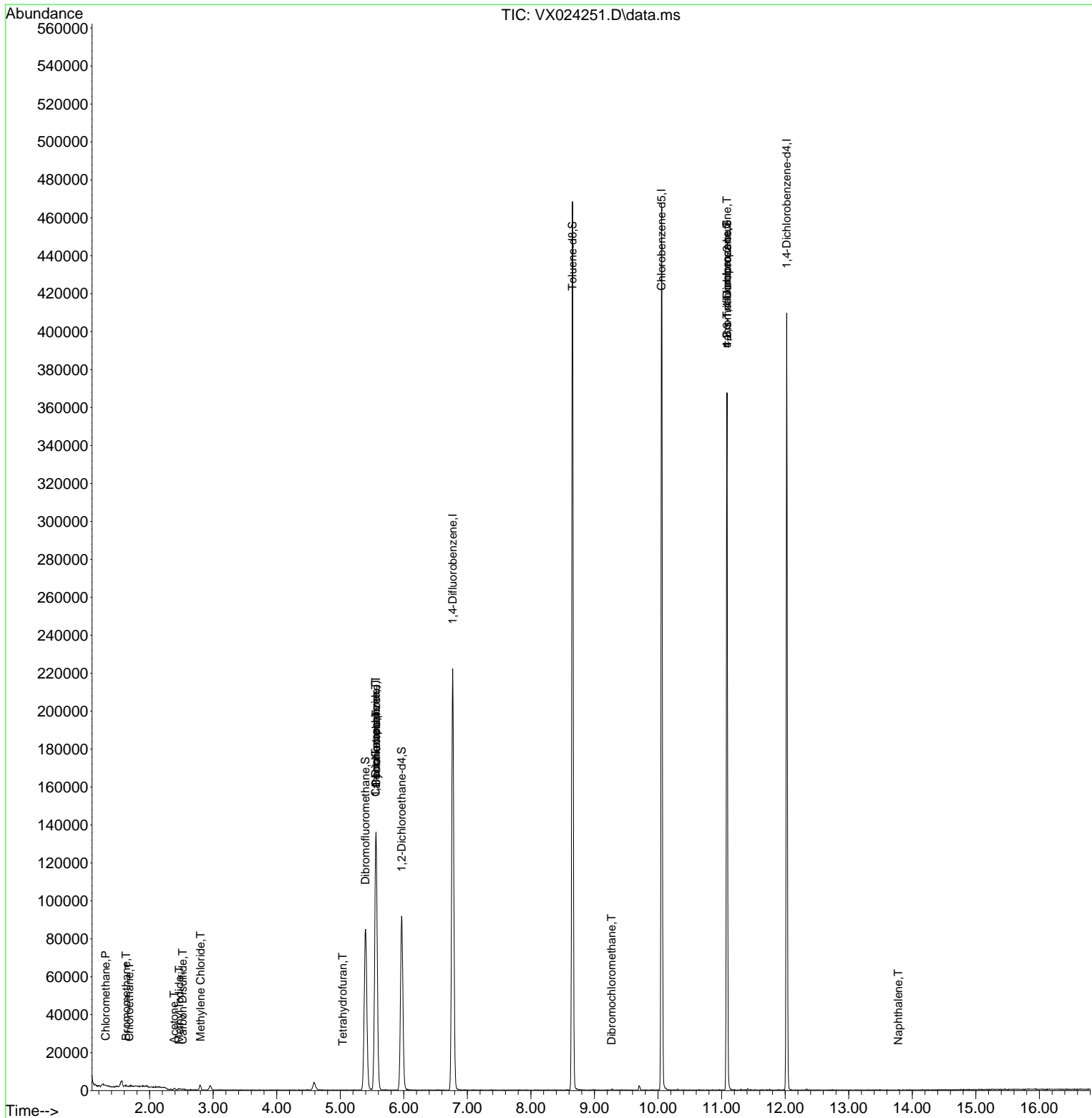
Internal Standards						
1) Pentafluorobenzene	5.562	168	125506	50.000	ug/l	0.00
34) 1,4-Difluorobenzene	6.769	114	217540	50.000	ug/l	0.00
63) Chlorobenzene-d5	10.055	117	203708	50.000	ug/l	0.00
72) 1,4-Dichlorobenzene-d4	12.024	152	79957	50.000	ug/l	0.00
System Monitoring Compounds						
33) 1,2-Dichloroethane-d4	5.964	65	94488	52.796	ug/l	0.00
Spiked Amount	50.000	Range 78 - 117	Recovery	=	105.600%	
35) Dibromofluoromethane	5.397	113	73844	50.616	ug/l	0.00
Spiked Amount	50.000	Range 75 - 124	Recovery	=	101.240%	
50) Toluene-d8	8.653	98	267095	50.255	ug/l	0.00
Spiked Amount	50.000	Range 92 - 112	Recovery	=	100.520%	
62) 4-Bromofluorobenzene	11.085	95	91681	44.326	ug/l	0.00
Spiked Amount	50.000	Range 83 - 123	Recovery	=	88.660%	
Target Compounds						
						Qvalue
3) Chloromethane	1.307	50	296	0.235	ug/l #	42
5) Bromomethane	1.630	94	618	0.828	ug/l	96
6) Chloroethane	1.678	64	213	2.202	ug/l #	43
10) Methyl Iodide	2.465	142	697	0.408	ug/l #	67
11) Tert butyl alcohol	2.953	59	1520	Below Cal	#	73
16) Acetone	2.386	43	725	0.950	ug/l #	75
17) Carbon Disulfide	2.520	76	639	0.220	ug/l #	75
20) Methylene Chloride	2.800	84	1232	0.841	ug/l	98
29) Tetrahydrofuran	5.038	42	144	0.205	ug/l #	27
31) Cyclohexane	5.562	56	2857	1.365	ug/l #	19
36) 1,1-Dichloropropene	5.556	75	10381	5.190	ug/l #	49
38) Carbon Tetrachloride	5.556	117	13400	5.953	ug/l #	18
60) Dibromochloromethane	9.268	129	96	1.777	ug/l #	11
76) 1,2,3-Trichloropropane	11.085	75	50238	27.325	ug/l #	39
81) trans-1,4-Dichloro-2-b...	11.085	75	50238	80.363	ug/l #	12
95) Naphthalene	13.780	128	272	1.333	ug/l #	69

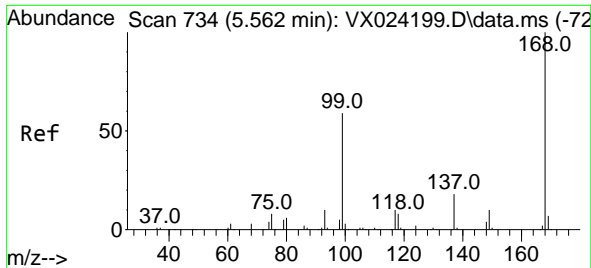
(#) = qualifier out of range (m) = manual integration (+) = signals summed

Data Path : Z:\voasrv\HPCHEM1\MSVOA_X\Data\VX091521\
 Data File : VX024251.D
 Acq On : 15 Sep 2021 11:11
 Operator : JC/MD
 Sample : VX0915WBL01
 Misc : 5.0mL/MSVOA_X/WATER
 ALS Vial : 4 Sample Multiplier: 1

Instrument :
 MSVOA_X
ClientSampleId :
 VX0915WBL01

Quant Time: Sep 16 04:40:20 2021
 Quant Method : Z:\voasrv\HPCHEM1\MSVOA_X\Method\82X091421W.M
 Quant Title : SW846 8260
 QLast Update : Tue Sep 14 12:18:04 2021
 Response via : Initial Calibration

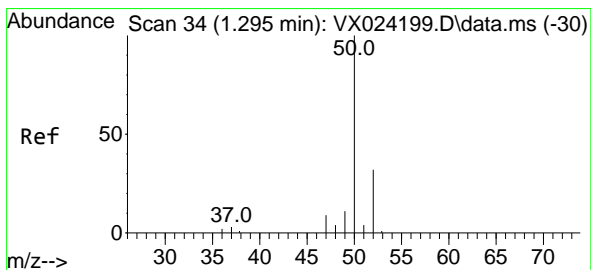
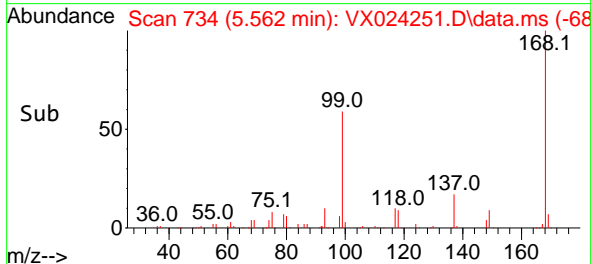
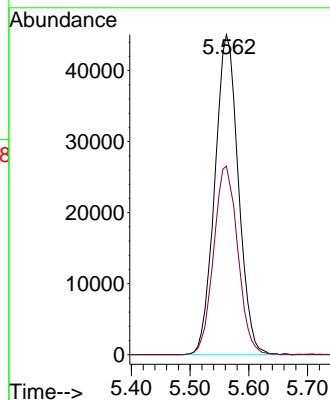
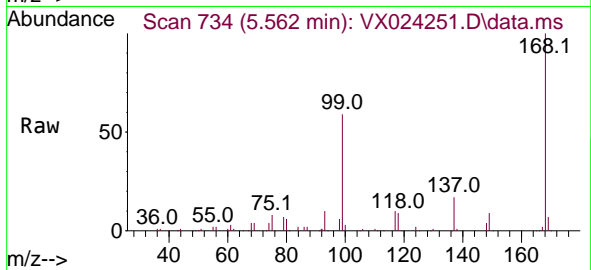




#1
 Pentafluorobenzene
 Concen: 50.000 ug/l
 RT: 5.562 min Scan# 734
 Delta R.T. -0.000 min
 Lab File: VX024251.D
 Acq: 15 Sep 2021 11:11

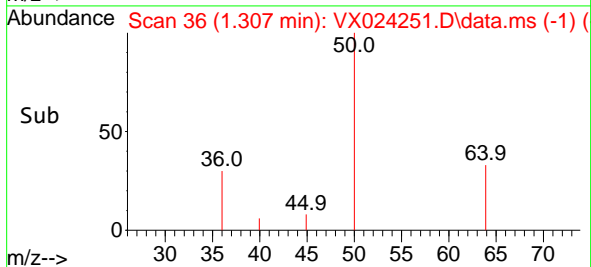
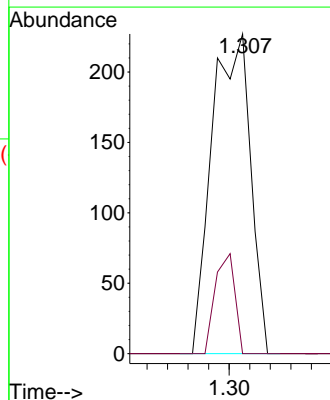
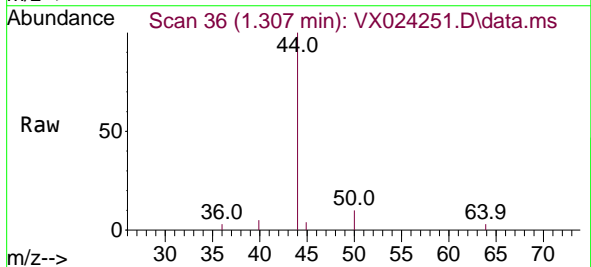
Instrument :
 MSVOA_X
 ClientSampled :
 VX0915WBL01

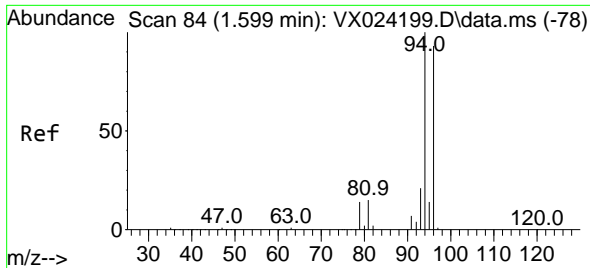
Tgt Ion:168 Resp: 125506
 Ion Ratio Lower Upper
 168 100
 99 59.0 45.8 68.6



#3
 Chloromethane
 Concen: 0.235 ug/l
 RT: 1.307 min Scan# 36
 Delta R.T. 0.012 min
 Lab File: VX024251.D
 Acq: 15 Sep 2021 11:11

Tgt Ion: 50 Resp: 296
 Ion Ratio Lower Upper
 50 100
 52 0.0 26.4 39.6#

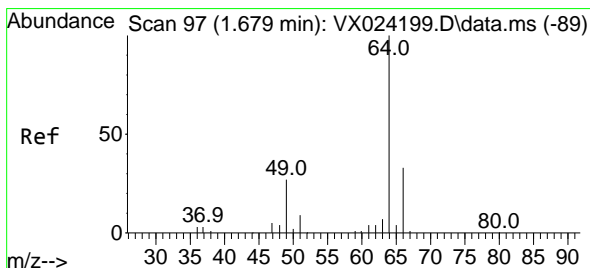
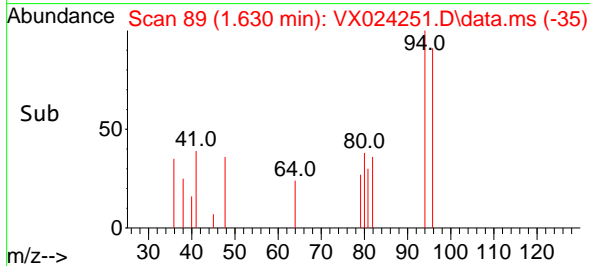
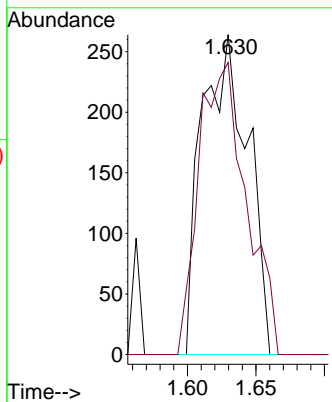
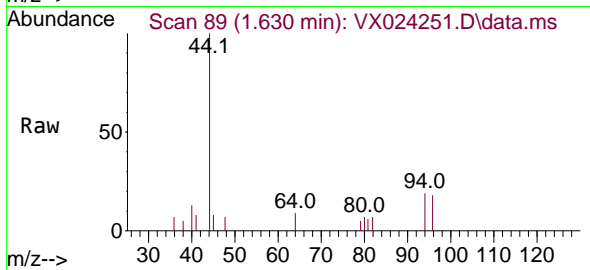




#5
 Bromomethane
 Concen: 0.828 ug/l
 RT: 1.630 min Scan# 89
 Delta R.T. 0.031 min
 Lab File: VX024251.D
 Acq: 15 Sep 2021 11:11

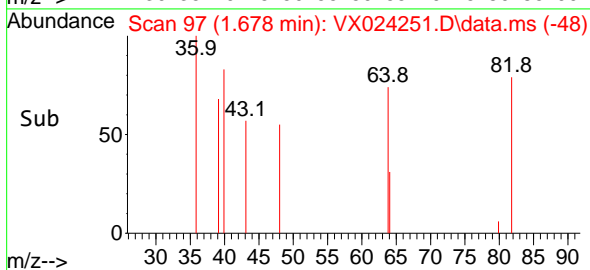
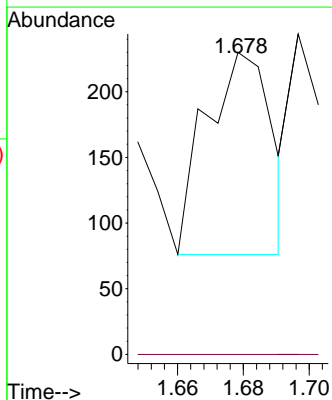
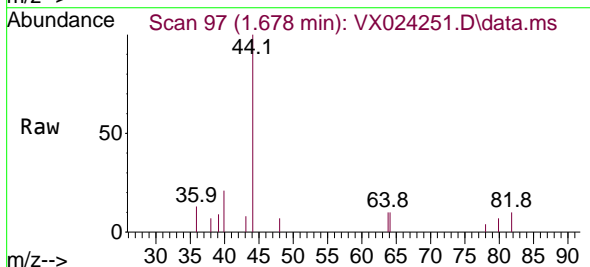
Instrument :
 MSVOA_X
 ClientSampled :
 VX0915WBL01

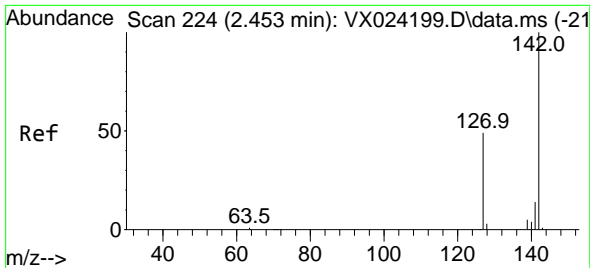
Tgt Ion: 94 Resp: 618
 Ion Ratio Lower Upper
 94 100
 96 91.3 76.4 114.6



#6
 Chloroethane
 Concen: 2.202 ug/l
 RT: 1.678 min Scan# 97
 Delta R.T. -0.001 min
 Lab File: VX024251.D
 Acq: 15 Sep 2021 11:11

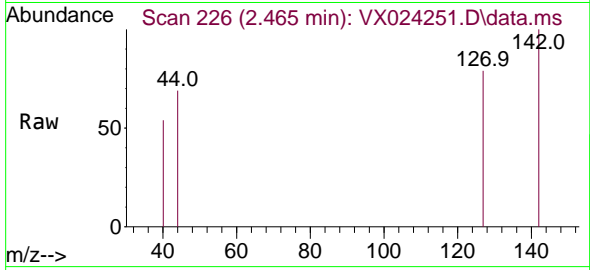
Tgt Ion: 64 Resp: 213
 Ion Ratio Lower Upper
 64 100
 66 0.0 25.4 38.0#



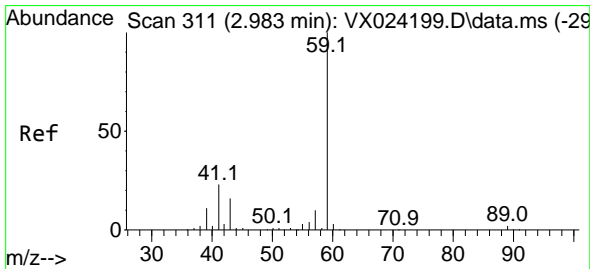
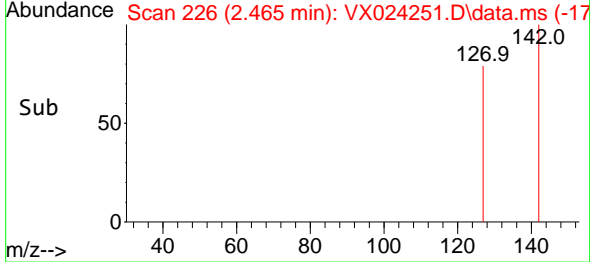
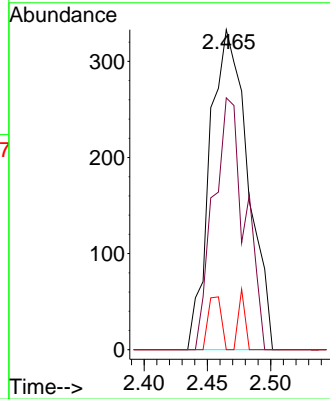


#10
 Methyl Iodide
 Concen: 0.408 ug/l
 RT: 2.465 min Scan# 226
 Delta R.T. 0.012 min
 Lab File: VX024251.D
 Acq: 15 Sep 2021 11:11

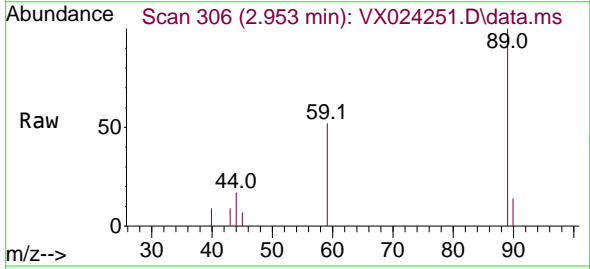
Instrument :
 MSVOA_X
 ClientSampled :
 VX0915WBL01



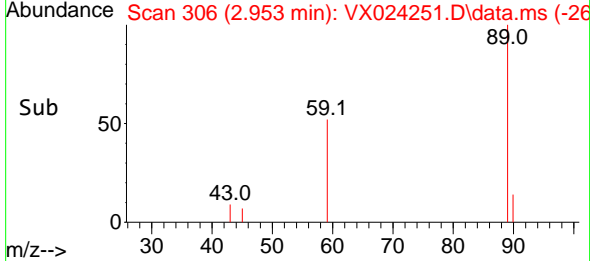
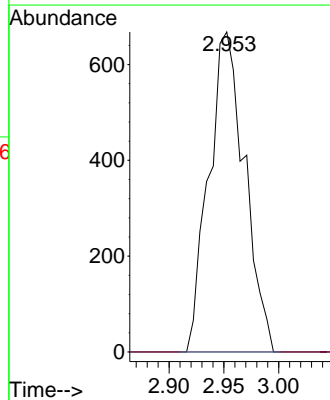
Tgt Ion:142 Resp: 697
 Ion Ratio Lower Upper
 142 100
 127 65.1 33.3 49.9#
 141 5.7 11.4 17.0#

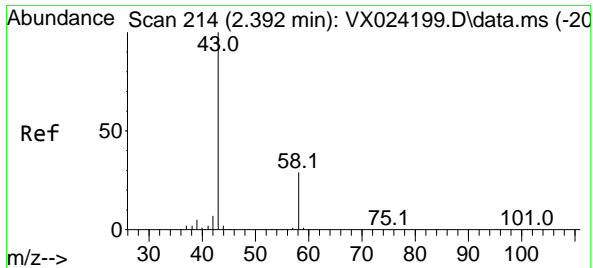


#11
 Tert butyl alcohol
 Concen: Below Cal
 RT: 2.953 min Scan# 306
 Delta R.T. -0.030 min
 Lab File: VX024251.D
 Acq: 15 Sep 2021 11:11



Tgt Ion: 59 Resp: 1520
 Ion Ratio Lower Upper
 59 100
 57 0.0 7.8 11.8#

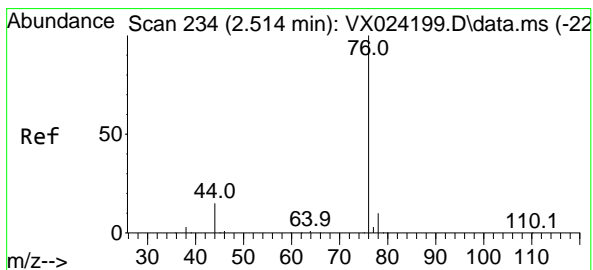
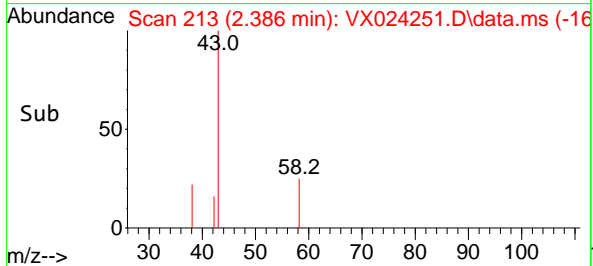
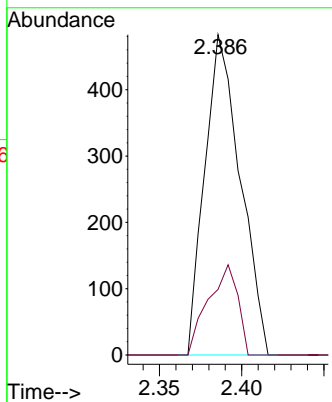
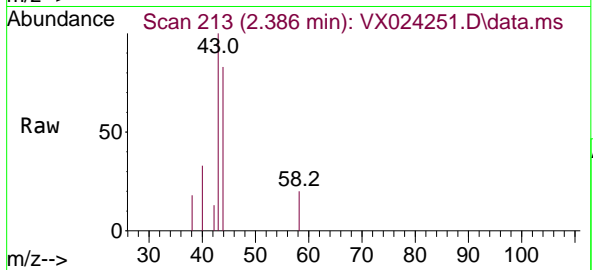




#16
 Acetone
 Concen: 0.950 ug/l
 RT: 2.386 min Scan# 213
 Delta R.T. -0.006 min
 Lab File: VX024251.D
 Acq: 15 Sep 2021 11:11

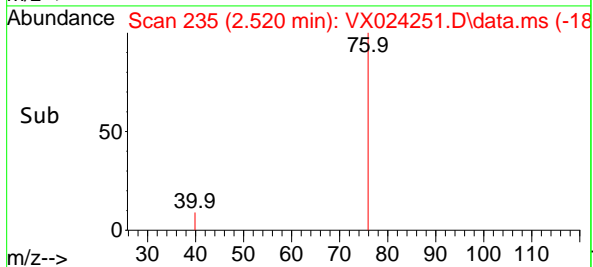
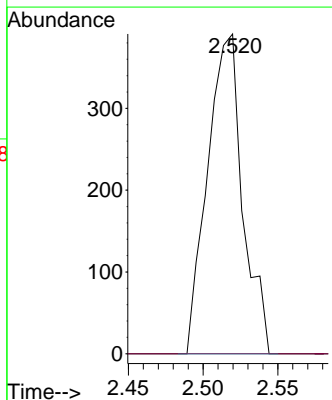
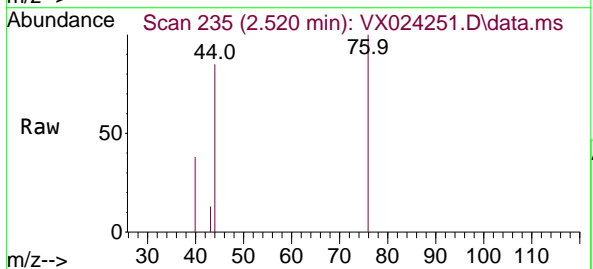
Instrument :
 MSVOA_X
 ClientSampled :
 VX0915WBL01

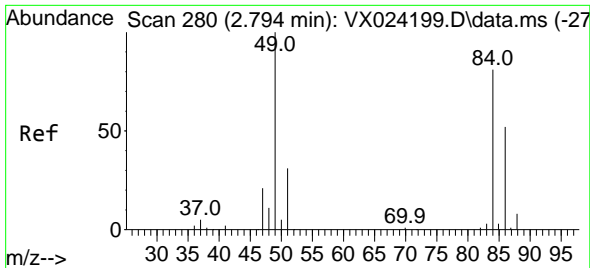
Tgt Ion: 43 Resp: 725
 Ion Ratio Lower Upper
 43 100
 58 20.5 27.8 41.8#



#17
 Carbon Disulfide
 Concen: 0.220 ug/l
 RT: 2.520 min Scan# 235
 Delta R.T. 0.006 min
 Lab File: VX024251.D
 Acq: 15 Sep 2021 11:11

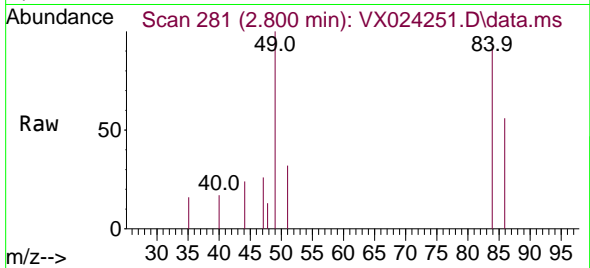
Tgt Ion: 76 Resp: 639
 Ion Ratio Lower Upper
 76 100
 78 0.0 7.2 10.8#





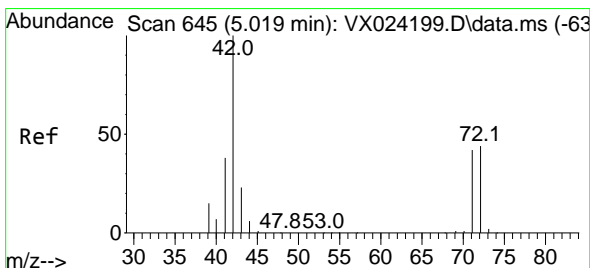
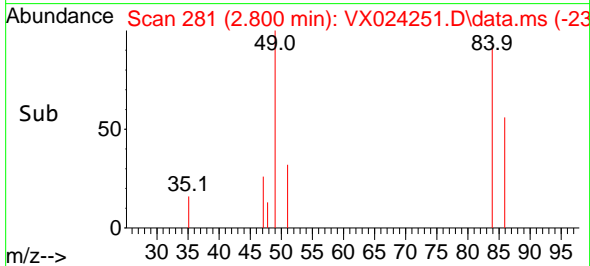
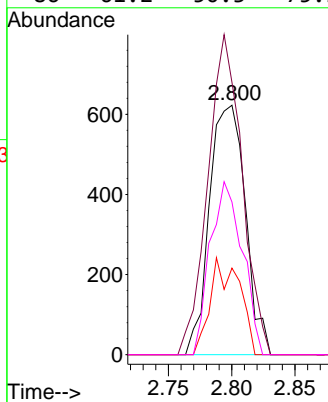
#20
 Methylene Chloride
 Concen: 0.841 ug/l
 RT: 2.800 min Scan# 281
 Delta R.T. 0.006 min
 Lab File: VX024251.D
 Acq: 15 Sep 2021 11:11

Instrument :
 MSVOA_X
 ClientSampled :
 VX0915WBL01

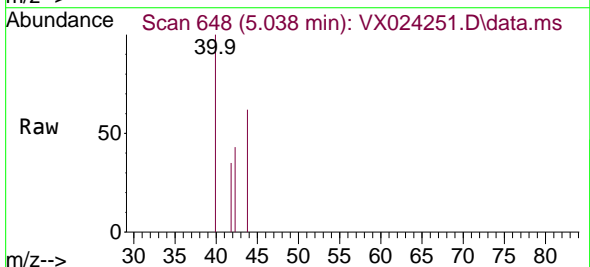


Tgt Ion: 84 Resp: 1232

Ion	Ratio	Lower	Upper
84	100		
49	109.1	88.6	132.8
51	34.7	27.0	40.6
86	61.2	50.3	75.5

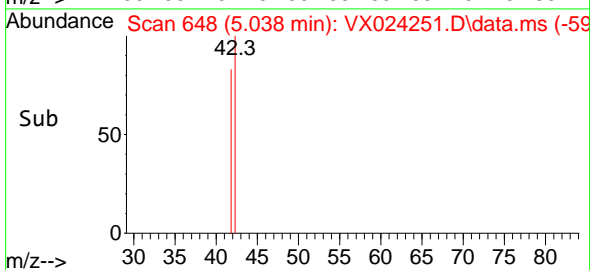
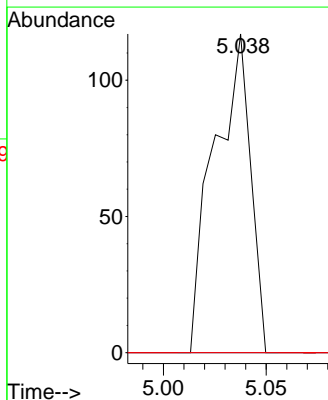


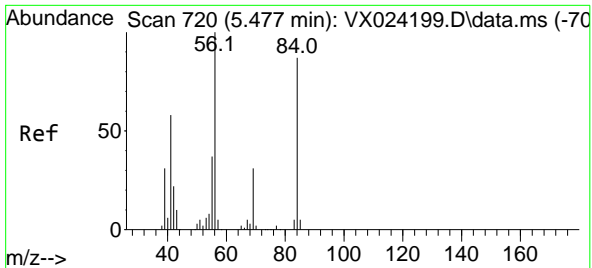
#29
 Tetrahydrofuran
 Concen: 0.205 ug/l
 RT: 5.038 min Scan# 648
 Delta R.T. 0.019 min
 Lab File: VX024251.D
 Acq: 15 Sep 2021 11:11



Tgt Ion: 42 Resp: 144

Ion	Ratio	Lower	Upper
42	100		
72	0.0	41.7	62.5#
71	0.0	38.4	57.6#

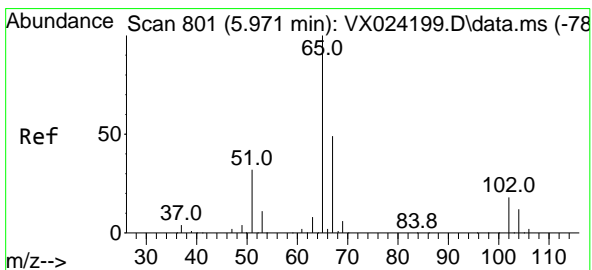
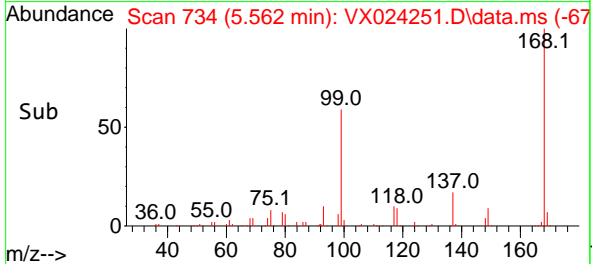
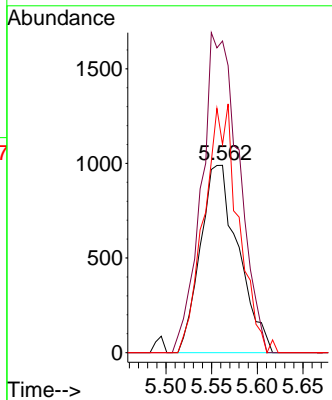
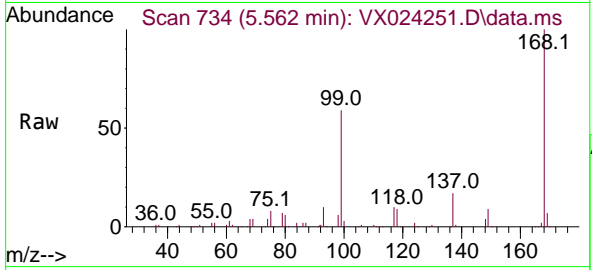




#31
 Cyclohexane
 Concen: 1.365 ug/l
 RT: 5.562 min Scan# 734
 Delta R.T. 0.085 min
 Lab File: VX024251.D
 Acq: 15 Sep 2021 11:11

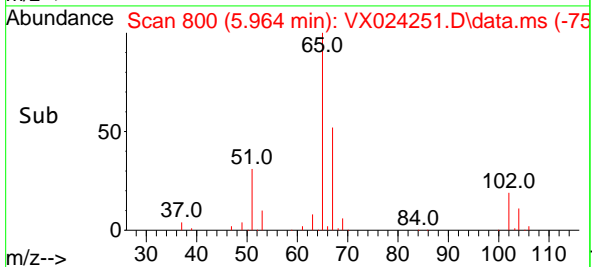
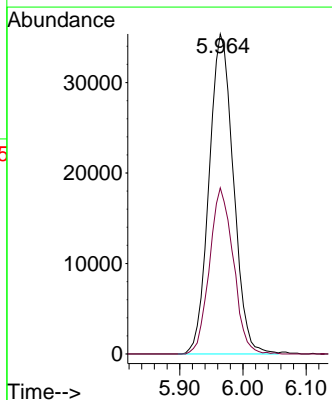
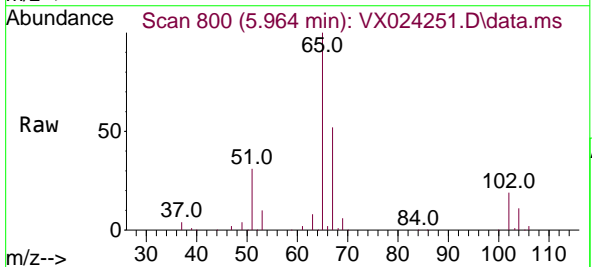
Instrument :
 MSVOA_X
 ClientSampled :
 VX0915WBL01

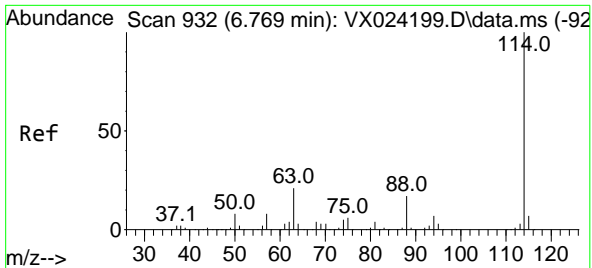
Tgt Ion	Resp	Lower	Upper
56	100		
69	166.4	25.3	37.9#
84	111.1	71.4	107.0#



#33
 1,2-Dichloroethane-d4
 Concen: 52.796 ug/l
 RT: 5.964 min Scan# 800
 Delta R.T. -0.007 min
 Lab File: VX024251.D
 Acq: 15 Sep 2021 11:11

Tgt Ion	Resp	Lower	Upper
65	100		
67	50.7	0.0	105.4

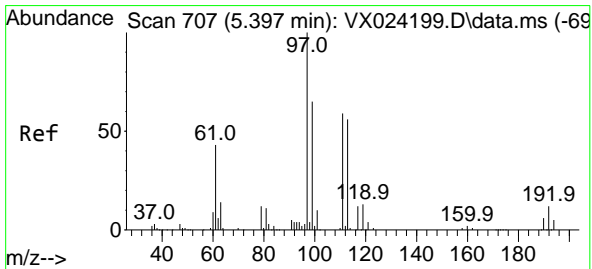
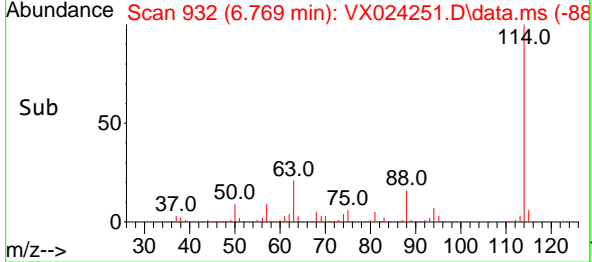
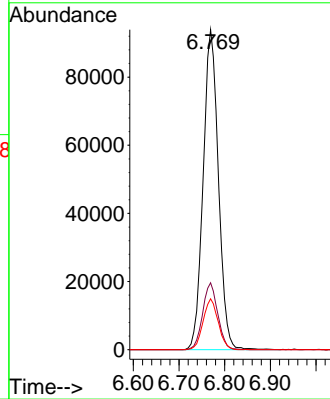
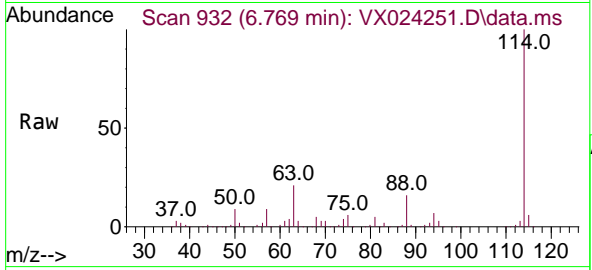




#34
 1,4-Difluorobenzene
 Concen: 50.000 ug/l
 RT: 6.769 min Scan# 932
 Delta R.T. -0.000 min
 Lab File: VX024251.D
 Acq: 15 Sep 2021 11:11

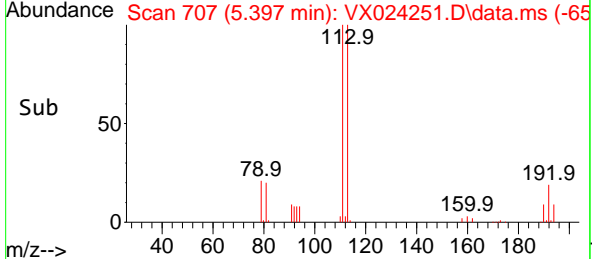
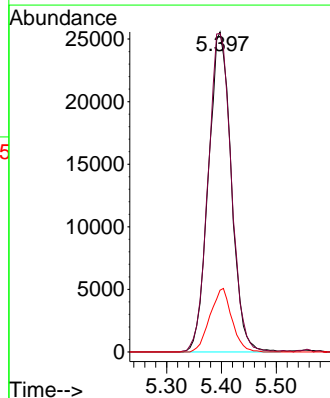
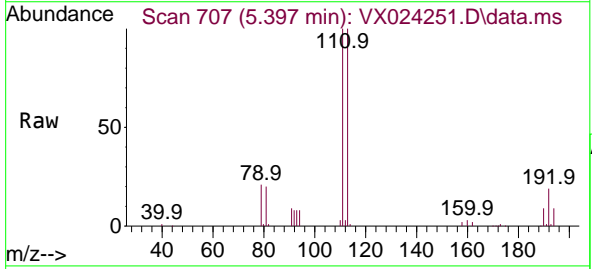
Instrument :
 MSVOA_X
 ClientSampled :
 VX0915WBL01

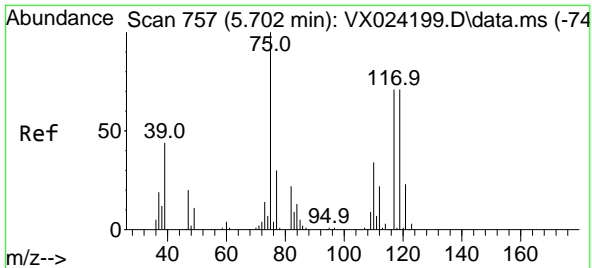
Tgt Ion	Resp	Lower	Upper
114	100		
63	20.9	0.0	40.8
88	15.9	0.0	32.8



#35
 Dibromofluoromethane
 Concen: 50.616 ug/l
 RT: 5.397 min Scan# 707
 Delta R.T. 0.000 min
 Lab File: VX024251.D
 Acq: 15 Sep 2021 11:11

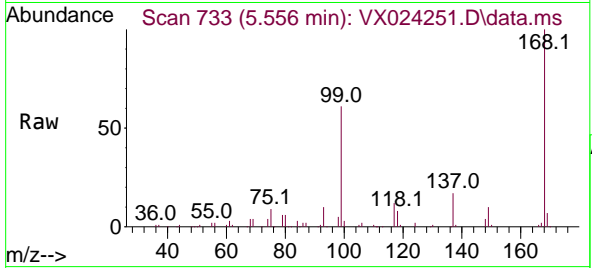
Tgt Ion	Resp	Lower	Upper
113	100		
111	101.5	81.9	122.9
192	19.0	16.7	25.1



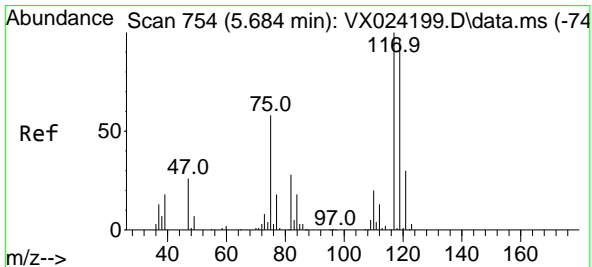
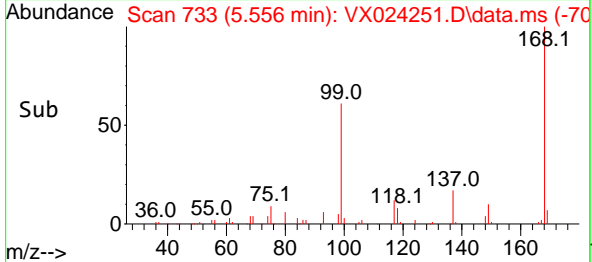
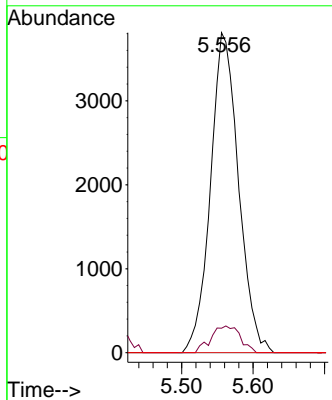


#36
 1,1-Dichloropropene
 Concen: 5.190 ug/l
 RT: 5.556 min Scan# 733
 Delta R.T. -0.146 min
 Lab File: VX024251.D
 Acq: 15 Sep 2021 11:11

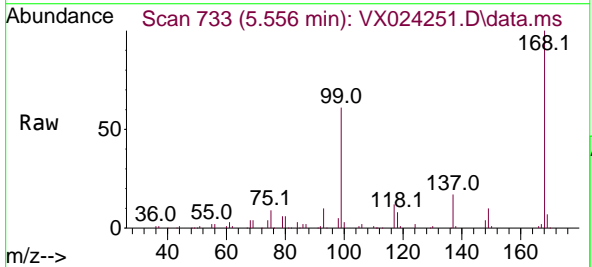
Instrument :
 MSVOA_X
 ClientSampled :
 VX0915WBL01



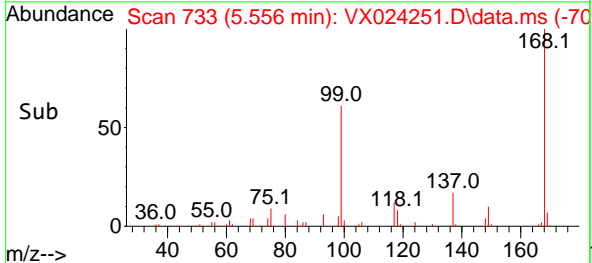
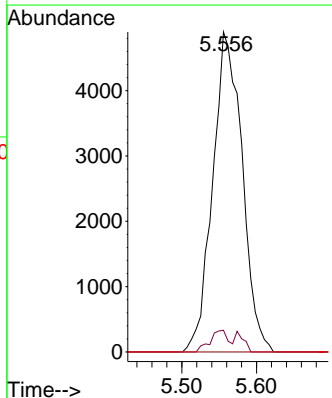
Tgt Ion: 75 Resp: 10381
 Ion Ratio Lower Upper
 75 100
 110 8.7 18.1 54.4#
 77 0.0 25.3 37.9#

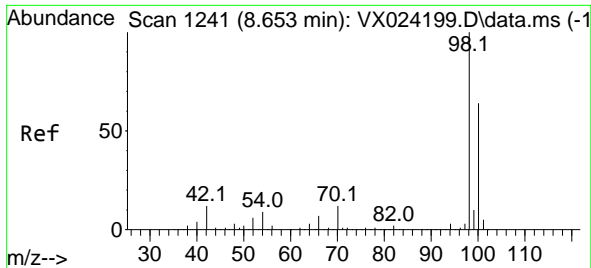


#38
 Carbon Tetrachloride
 Concen: 5.953 ug/l
 RT: 5.556 min Scan# 733
 Delta R.T. -0.128 min
 Lab File: VX024251.D
 Acq: 15 Sep 2021 11:11



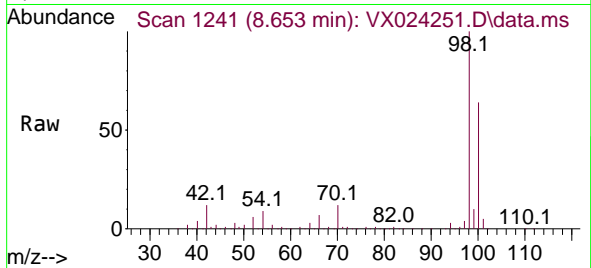
Tgt Ion: 117 Resp: 13400
 Ion Ratio Lower Upper
 117 100
 119 6.8 76.2 114.2#
 121 0.0 24.8 37.2#



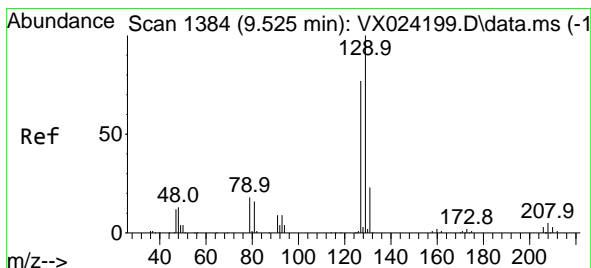
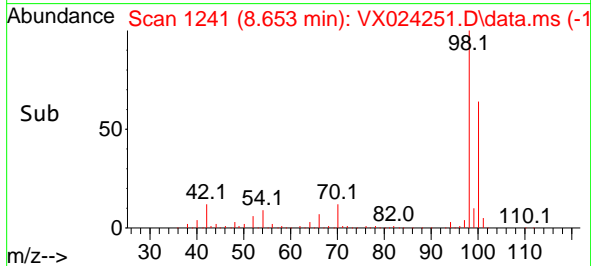
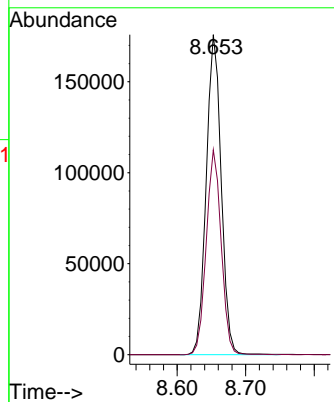


#50
 Toluene-d8
 Concen: 50.255 ug/l
 RT: 8.653 min Scan# 1241
 Delta R.T. -0.000 min
 Lab File: VX024251.D
 Acq: 15 Sep 2021 11:11

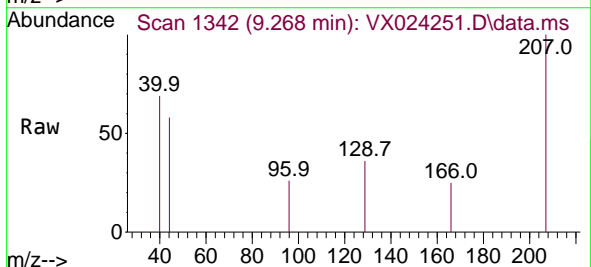
Instrument :
 MSVOA_X
 ClientSampled :
 VX0915WBL01



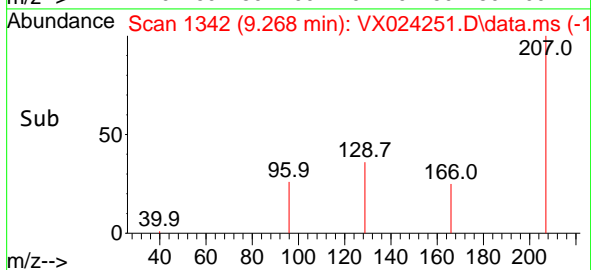
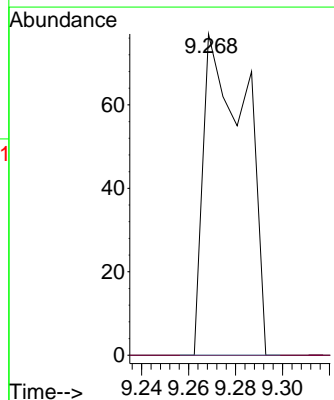
Tgt Ion: 98 Resp: 267095
 Ion Ratio Lower Upper
 98 100
 100 63.9 51.9 77.9

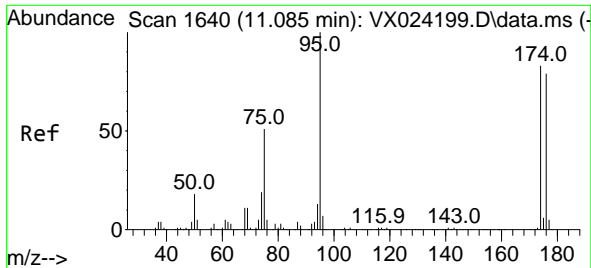


#60
 Dibromochloromethane
 Concen: 1.777 ug/l
 RT: 9.268 min Scan# 1342
 Delta R.T. -0.257 min
 Lab File: VX024251.D
 Acq: 15 Sep 2021 11:11



Tgt Ion: 129 Resp: 96
 Ion Ratio Lower Upper
 129 100
 127 0.0 38.4 115.2#

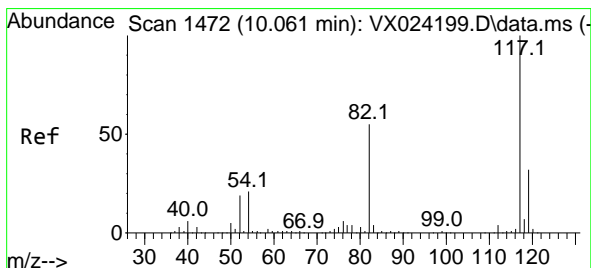
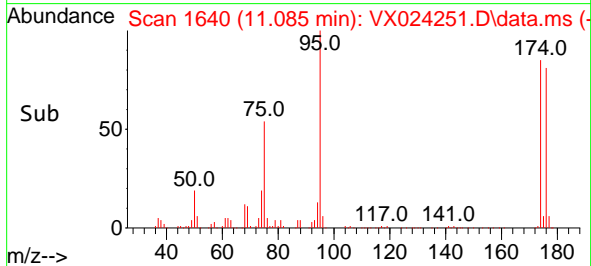
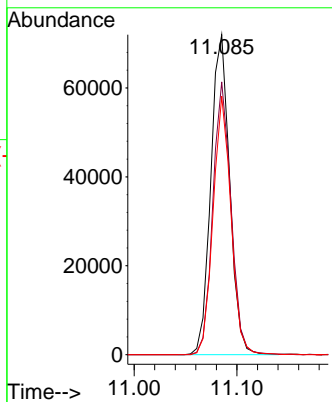
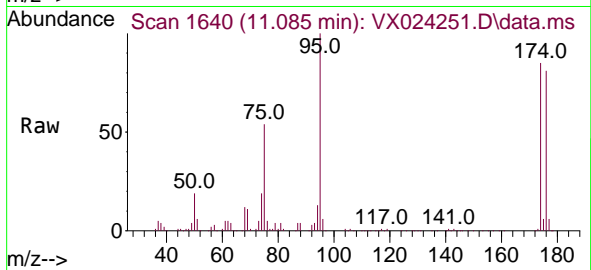




#62
 4-Bromofluorobenzene
 Concen: 44.326 ug/l
 RT: 11.085 min Scan# 1640
 Delta R.T. 0.000 min
 Lab File: VX024251.D
 Acq: 15 Sep 2021 11:11

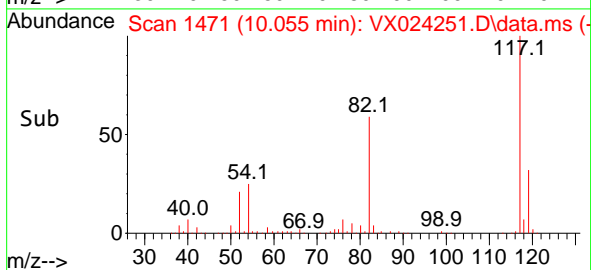
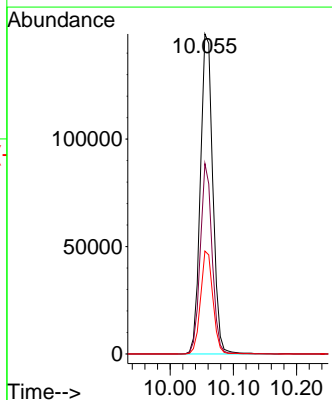
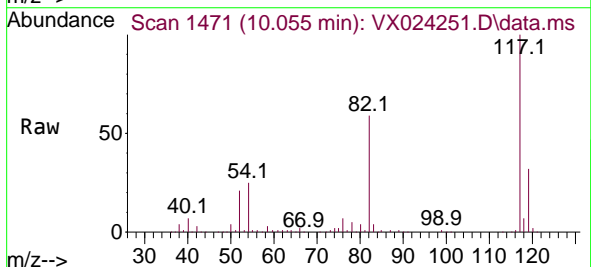
Instrument :
 MSVOA_X
 ClientSampled :
 VX0915WBL01

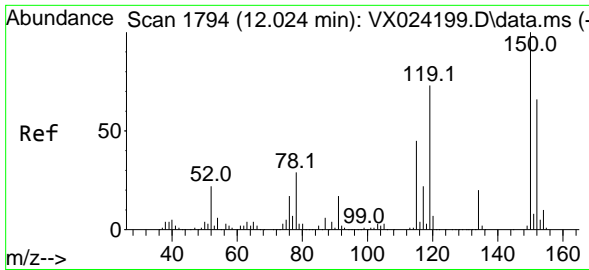
Tgt Ion	Resp	Lower	Upper
95	91681		
174	82.3	0.0	154.6
176	76.7	0.0	155.8



#63
 Chlorobenzene-d5
 Concen: 50.000 ug/l
 RT: 10.055 min Scan# 1471
 Delta R.T. -0.006 min
 Lab File: VX024251.D
 Acq: 15 Sep 2021 11:11

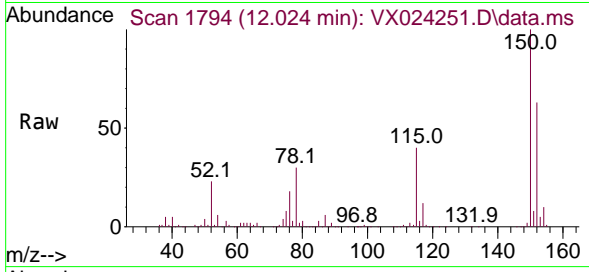
Tgt Ion	Resp	Lower	Upper
117	203708		
82	59.5	47.4	71.2
119	32.2	26.6	39.8



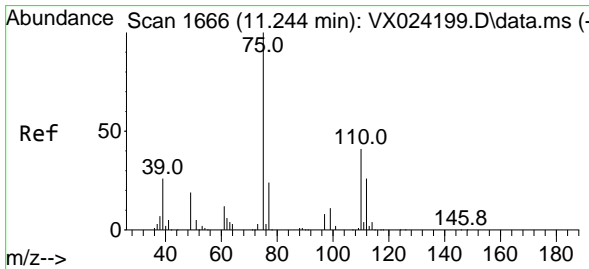
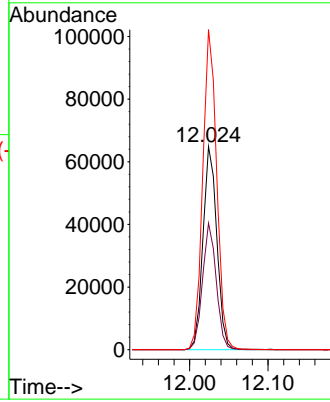
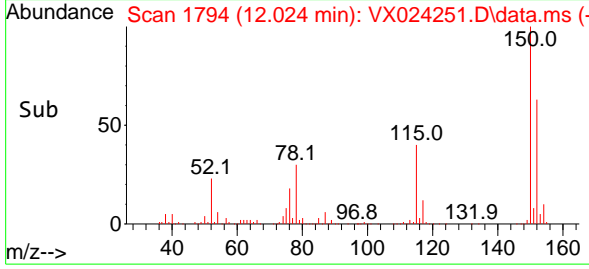


#72
 1,4-Dichlorobenzene-d4
 Concen: 50.000 ug/l
 RT: 12.024 min Scan# 1794
 Delta R.T. 0.000 min
 Lab File: VX024251.D
 Acq: 15 Sep 2021 11:11

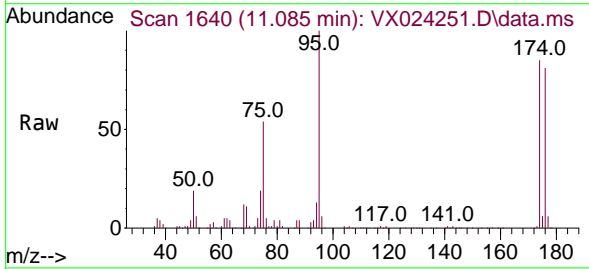
Instrument :
 MSVOA_X
 ClientSampled :
 VX0915WBL01



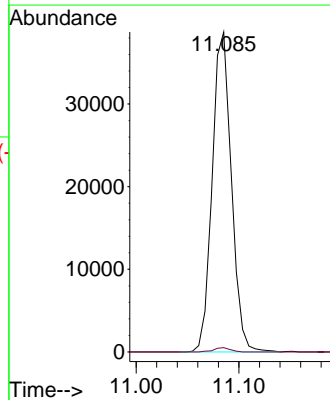
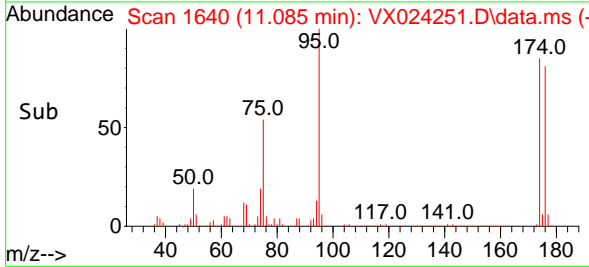
Tgt Ion:152 Resp: 79957
 Ion Ratio Lower Upper
 152 100
 115 61.4 41.1 123.3
 150 157.8 0.0 349.0

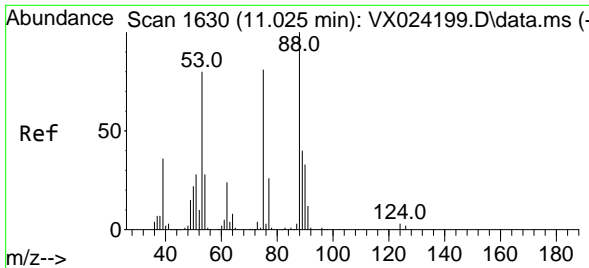


#76
 1,2,3-Trichloropropane
 Concen: 27.325 ug/l
 RT: 11.085 min Scan# 1640
 Delta R.T. -0.159 min
 Lab File: VX024251.D
 Acq: 15 Sep 2021 11:11



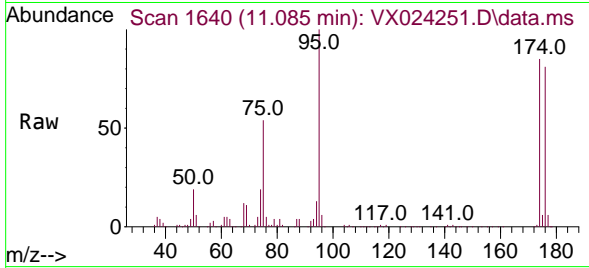
Tgt Ion: 75 Resp: 50238
 Ion Ratio Lower Upper
 75 100
 77 1.2 19.1 57.5#



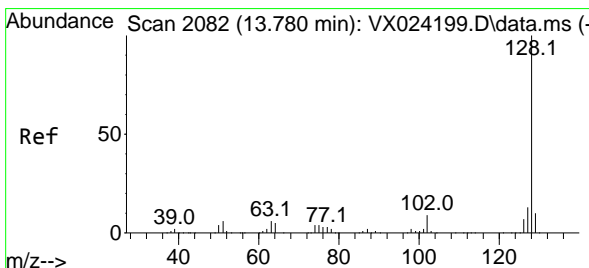
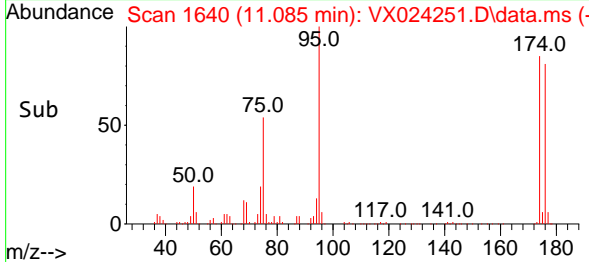
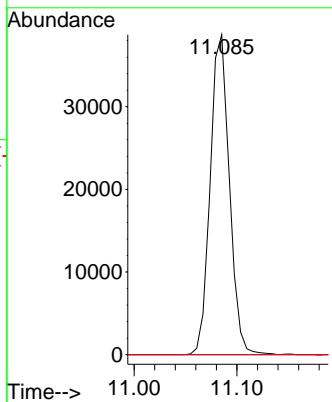


#81
 trans-1,4-Dichloro-2-butene
 Concen: 80.363 ug/l
 RT: 11.085 min Scan# 1640
 Delta R.T. 0.060 min
 Lab File: VX024251.D
 Acq: 15 Sep 2021 11:11

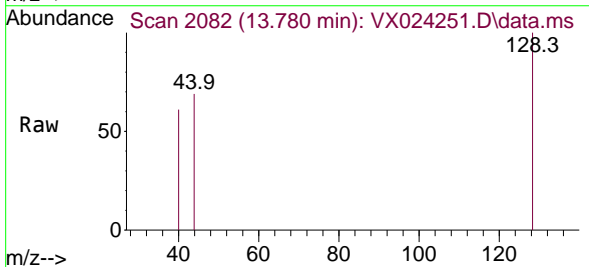
Instrument :
 MSVOA_X
 ClientSampled :
 VX0915WBL01



Tgt Ion: 75 Resp: 50238
 Ion Ratio Lower Upper
 75 100
 53 0.0 74.5 111.7#
 89 0.0 37.9 56.9#



#95
 Naphthalene
 Concen: 1.333 ug/l
 RT: 13.780 min Scan# 2082
 Delta R.T. -0.000 min
 Lab File: VX024251.D
 Acq: 15 Sep 2021 11:11



Tgt Ion: 128 Resp: 272
 Ion Ratio Lower Upper
 128 100
 127 0.0 10.3 15.5#
 129 0.0 8.8 13.2#

