

Data Path : Z:\voasrv\HPCHEM1\MSVOA\_X\Data\VX091522\  
 Data File : VX031392.D  
 Acq On : 16 Sep 2022 07:22  
 Operator : JC/MD  
 Sample : N4626-01  
 Misc : 5.0mL/MSVOA\_X/WATER  
 ALS Vial : 46 Sample Multiplier: 1

Instrument :  
 MSVOA\_X  
 ClientSampleId :  
 BP-VPB-RW5-TB-20220909

Quant Time: Sep 16 08:49:19 2022  
 Quant Method : Z:\voasrv\HPCHEM1\MSVOA\_X\Method\82X091422W.M  
 Quant Title : SW846 8260  
 QLast Update : Thu Sep 15 01:50:07 2022  
 Response via : Initial Calibration

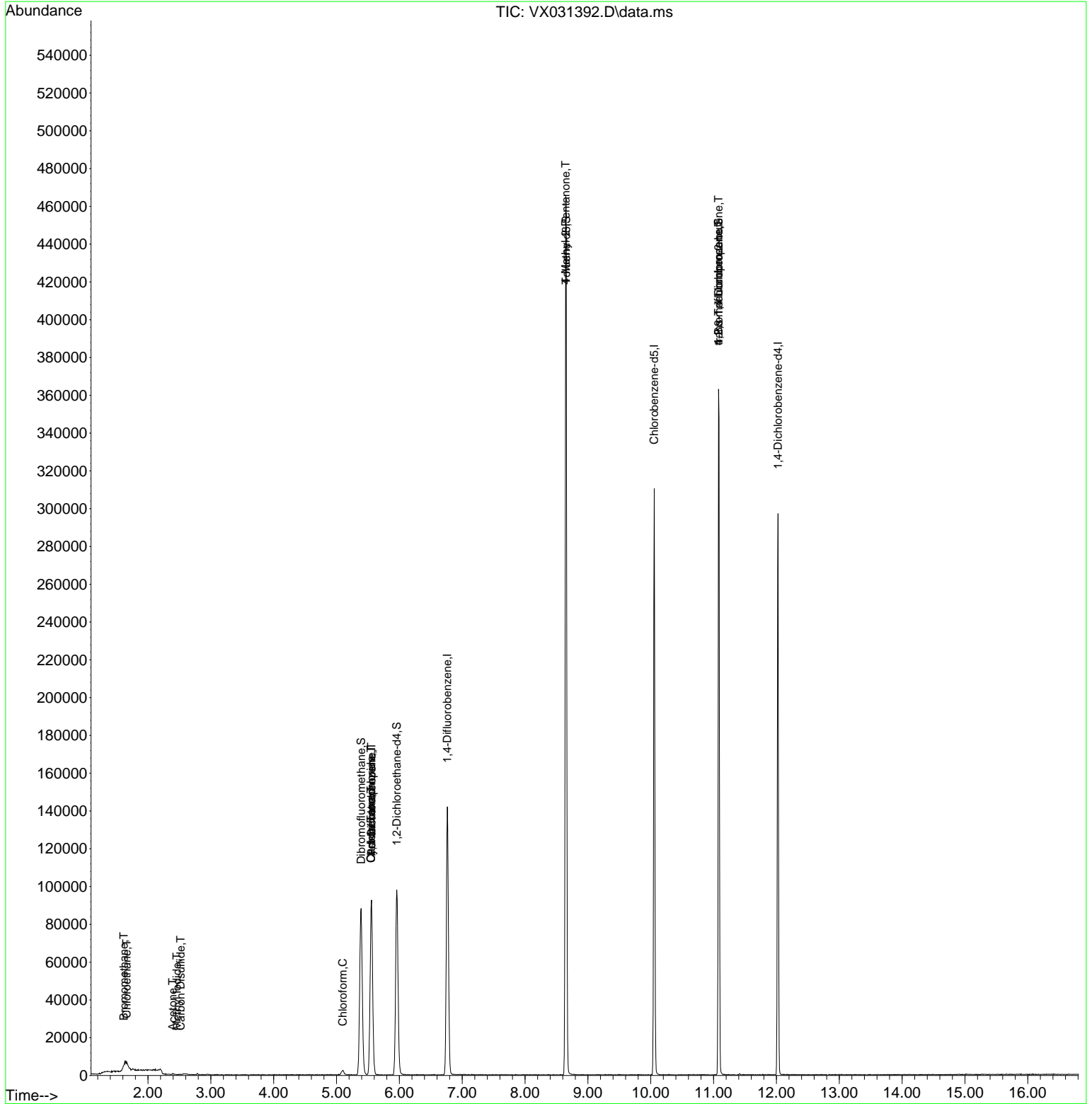
Compound	R.T.	QIon	Response	Conc	Units	Dev(Min)
-----						
Internal Standards						
1) Pentafluorobenzene	5.556	168	85755	50.000	ug/l	0.00
34) 1,4-Difluorobenzene	6.763	114	142162	50.000	ug/l	0.00
63) Chlorobenzene-d5	10.055	117	127765	50.000	ug/l	0.00
72) 1,4-Dichlorobenzene-d4	12.024	152	56519	50.000	ug/l	0.00
System Monitoring Compounds						
33) 1,2-Dichloroethane-d4	5.958	65	88713	42.146	ug/l	0.00
Spiked Amount	50.000	Range 74 - 125	Recovery =	84.300%		
35) Dibromofluoromethane	5.391	113	71530	46.809	ug/l	0.00
Spiked Amount	50.000	Range 75 - 124	Recovery =	93.620%		
50) Toluene-d8	8.653	98	274620	47.908	ug/l	0.00
Spiked Amount	50.000	Range 86 - 113	Recovery =	95.820%		
62) 4-Bromofluorobenzene	11.079	95	86327	41.125	ug/l	0.00
Spiked Amount	50.000	Range 83 - 123	Recovery =	82.260%#		
Target Compounds						
						Qvalue
3) Chloromethane	1.288	50	122	Below Cal	#	41
5) Bromomethane	1.618	94	372	0.331	ug/l #	50
6) Chloroethane	1.660	64	229	0.214	ug/l #	43
10) Methyl Iodide	2.459	142	24	0.925	ug/l #	38
11) Tert butyl alcohol	2.959	59	64	Below Cal	#	73
16) Acetone	2.392	43	526	0.585	ug/l	91
17) Carbon Disulfide	2.520	76	102	0.915	ug/l #	75
20) Methylene Chloride	2.794	84	206	Below Cal	#	81
21) trans-1,2-Dichloroethene	3.123	96	22	Below Cal	#	1
30) Chloroform	5.099	83	2974	0.967	ug/l #	80
31) Cyclohexane	5.550	56	2075	0.918	ug/l #	11
36) 1,1-Dichloropropene	5.556	75	6805	3.253	ug/l #	47
38) Carbon Tetrachloride	5.550	117	8614	3.789	ug/l #	18
51) 4-Methyl-2-Pentanone	8.647	43	1328	0.466	ug/l #	1
76) 1,2,3-Trichloropropane	11.079	75	49198	34.542	ug/l #	37
81) trans-1,4-Dichloro-2-b...	11.079	75	49198	95.579	ug/l #	11

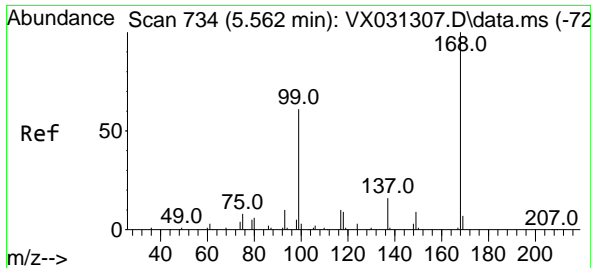
(#) = qualifier out of range (m) = manual integration (+) = signals summed

Data Path : Z:\voasrv\HPCHEM1\MSVOA\_X\Data\VX091522\  
 Data File : VX031392.D  
 Acq On : 16 Sep 2022 07:22  
 Operator : JC/MD  
 Sample : N4626-01  
 Misc : 5.0mL/MSVOA\_X/WATER  
 ALS Vial : 46 Sample Multiplier: 1

Instrument :  
 MSVOA\_X  
 ClientSampleId :  
 BP-VPB-RW5-TB-20220909

Quant Time: Sep 16 08:49:19 2022  
 Quant Method : Z:\voasrv\HPCHEM1\MSVOA\_X\Method\82X091422W.M  
 Quant Title : SW846 8260  
 QLast Update : Thu Sep 15 01:50:07 2022  
 Response via : Initial Calibration

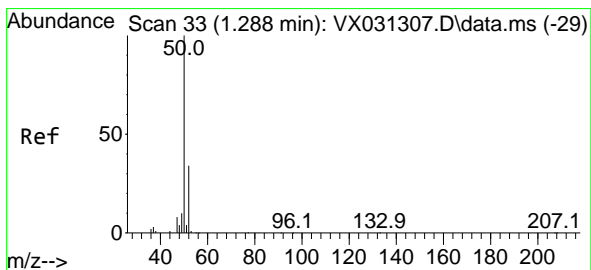
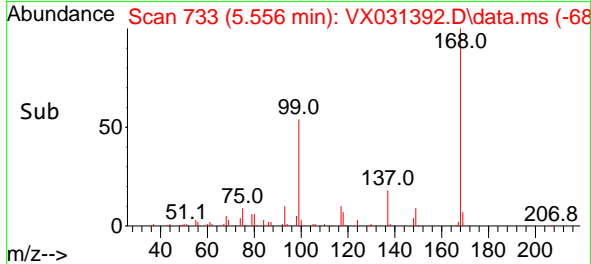
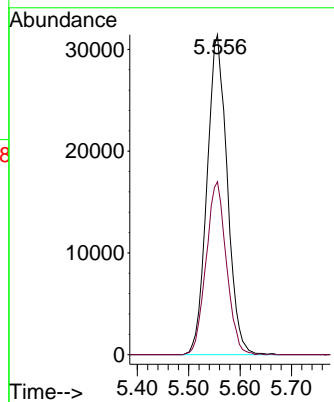
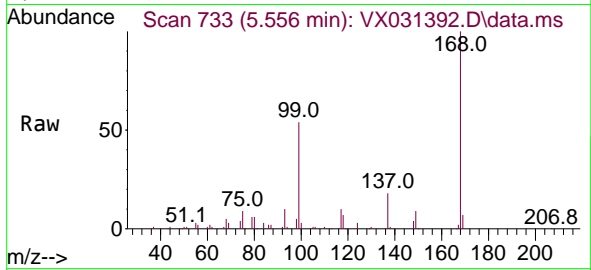




#1  
 Pentafluorobenzene  
 Concen: 50.000 ug/l  
 RT: 5.556 min Scan# 71  
 Delta R.T. -0.006 min  
 Lab File: VX031392.D  
 Acq: 16 Sep 2022 07:22

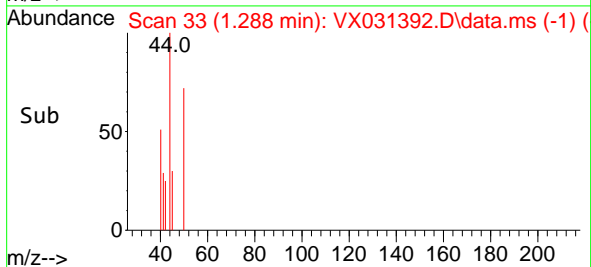
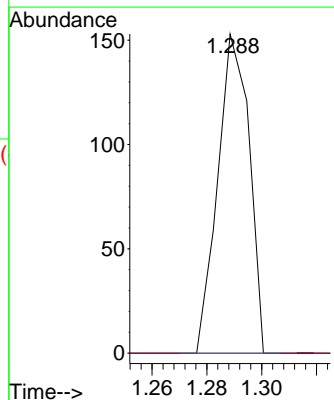
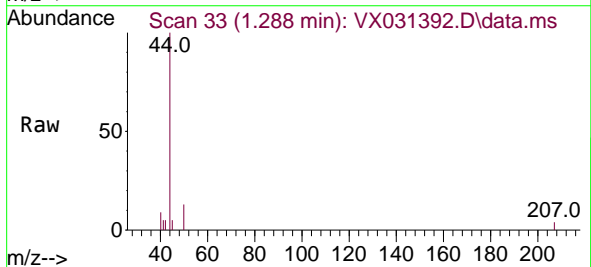
Instrument : MSVOA\_X  
 ClientSampleId : BP-VPB-RW5-TB-20220909

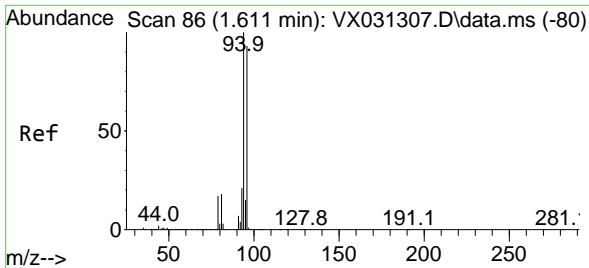
Tgt Ion:168 Resp: 85755  
 Ion Ratio Lower Upper  
 168 100  
 99 54.1 48.8 73.2



#3  
 Chloromethane  
 Concen: Below Cal  
 RT: 1.288 min Scan# 33  
 Delta R.T. 0.000 min  
 Lab File: VX031392.D  
 Acq: 16 Sep 2022 07:22

Tgt Ion: 50 Resp: 122  
 Ion Ratio Lower Upper  
 50 100  
 52 0.0 26.9 40.3#

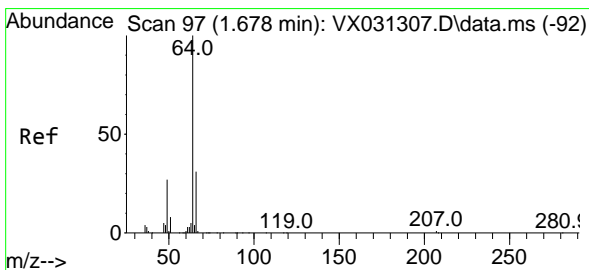
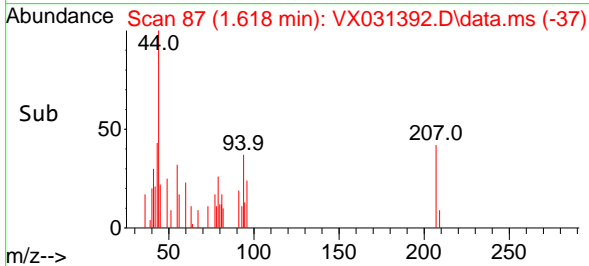
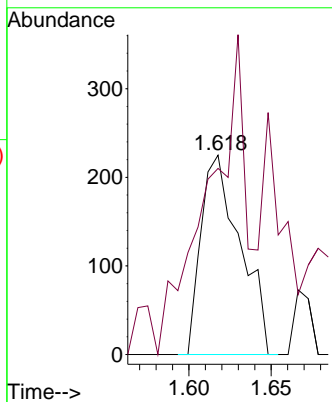
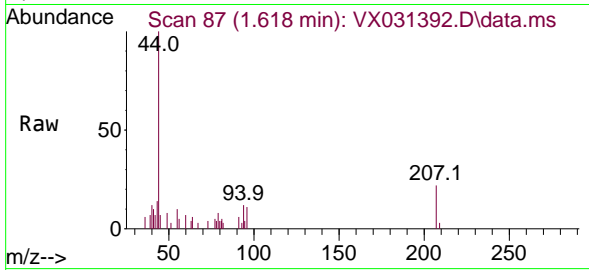




#5  
 Bromomethane  
 Concen: 0.331 ug/l  
 RT: 1.618 min Scan# 81  
 Delta R.T. 0.006 min  
 Lab File: VX031392.D  
 Acq: 16 Sep 2022 07:22

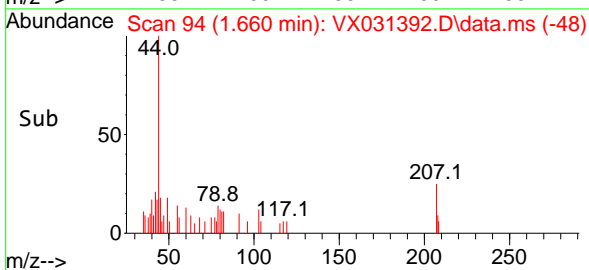
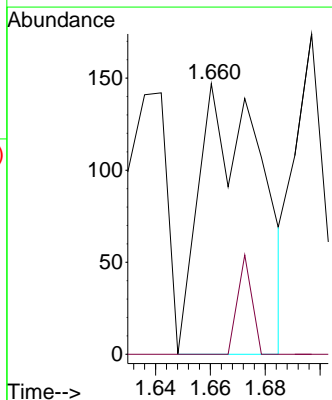
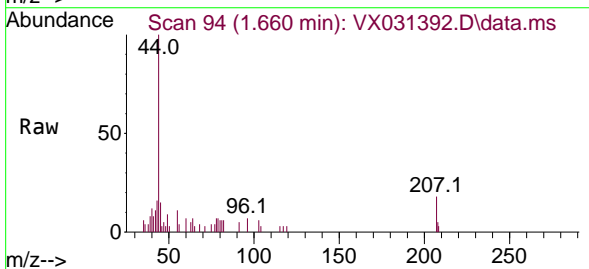
Instrument :  
 MSVOA\_X  
 ClientSampleId :  
 BP-VPB-RW5-TB-20220909

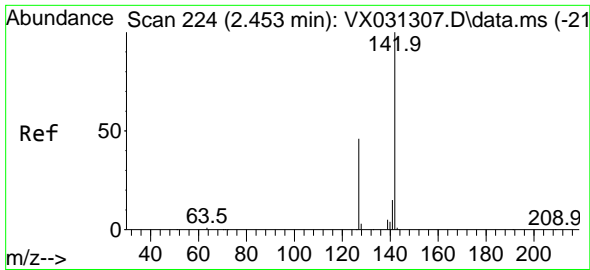
Tgt Ion: 94 Resp: 372  
 Ion Ratio Lower Upper  
 94 100  
 96 45.2 74.4 111.6#



#6  
 Chloroethane  
 Concen: 0.214 ug/l  
 RT: 1.660 min Scan# 94  
 Delta R.T. -0.018 min  
 Lab File: VX031392.D  
 Acq: 16 Sep 2022 07:22

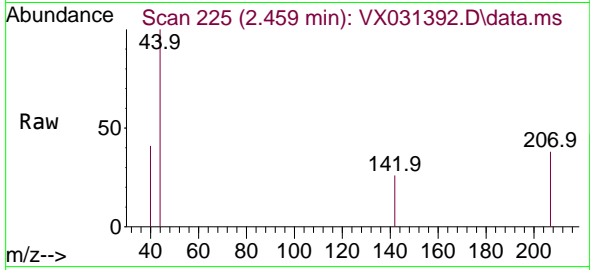
Tgt Ion: 64 Resp: 229  
 Ion Ratio Lower Upper  
 64 100  
 66 0.0 25.0 37.4#



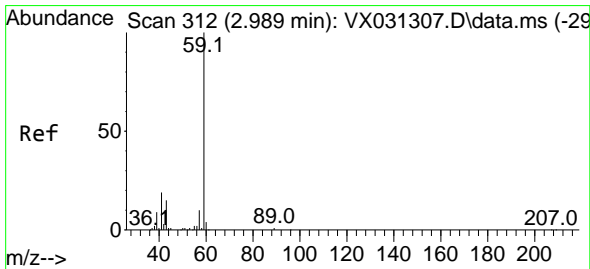
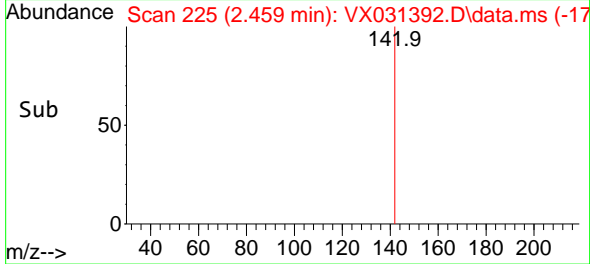
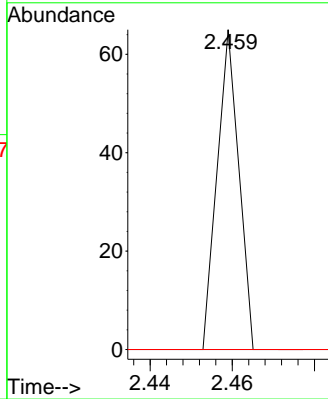


#10  
 Methyl Iodide  
 Concen: 0.925 ug/l  
 RT: 2.459 min Scan# 21  
 Delta R.T. 0.006 min  
 Lab File: VX031392.D  
 Acq: 16 Sep 2022 07:22

Instrument : MSVOA\_X  
 ClientSampleId : BP-VPB-RW5-TB-20220909

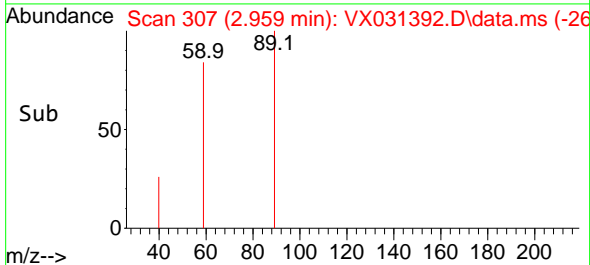
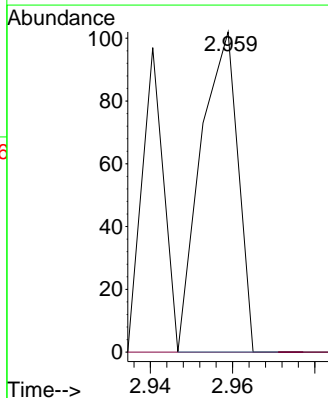
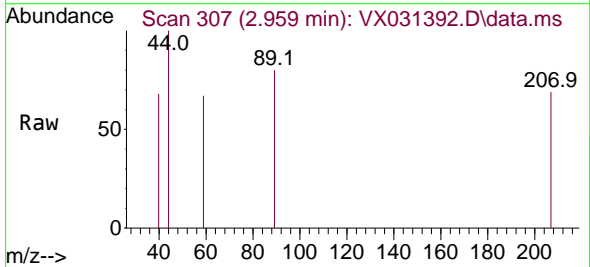


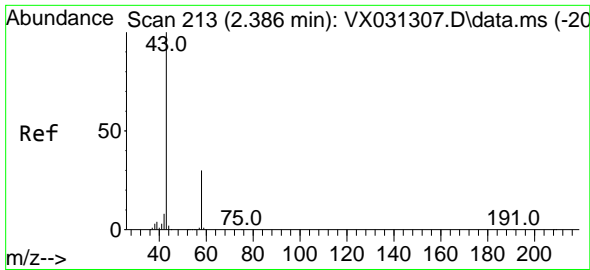
Tgt Ion:142 Resp: 24  
 Ion Ratio Lower Upper  
 142 100  
 127 0.0 37.4 56.0#  
 141 0.0 11.6 17.4#



#11  
 Tert butyl alcohol  
 Concen: Below Cal  
 RT: 2.959 min Scan# 307  
 Delta R.T. -0.030 min  
 Lab File: VX031392.D  
 Acq: 16 Sep 2022 07:22

Tgt Ion: 59 Resp: 64  
 Ion Ratio Lower Upper  
 59 100  
 57 0.0 8.2 12.2#

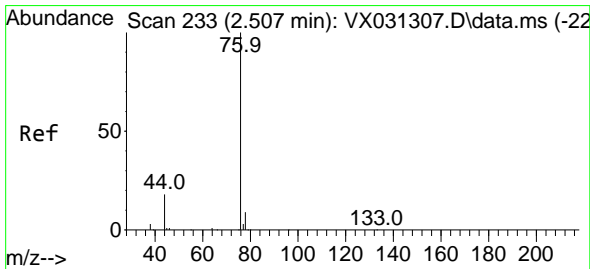
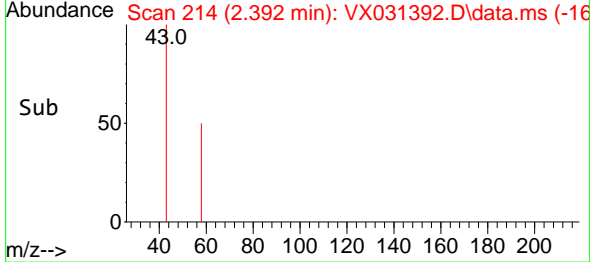
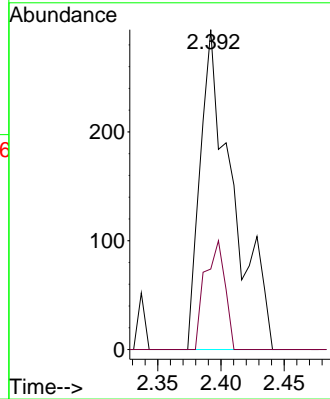
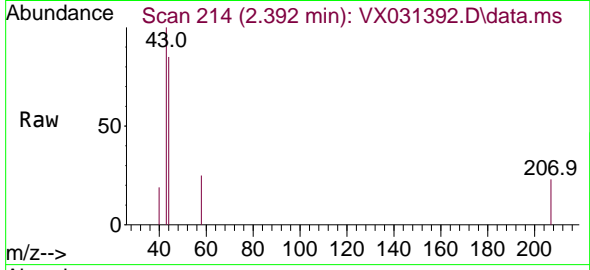




#16  
 Acetone  
 Concen: 0.585 ug/l  
 RT: 2.392 min Scan# 213  
 Delta R.T. 0.006 min  
 Lab File: VX031392.D  
 Acq: 16 Sep 2022 07:22

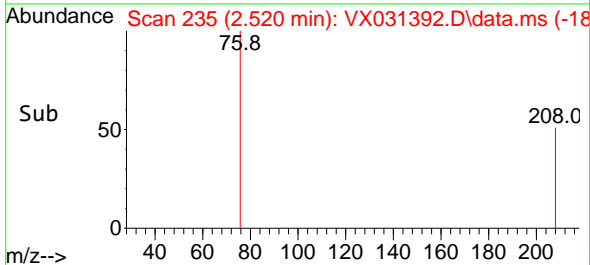
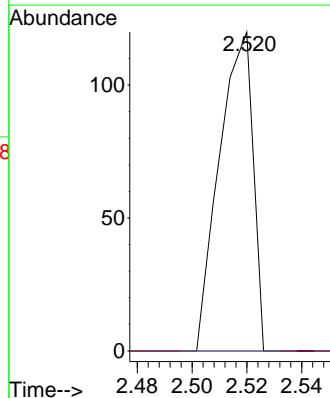
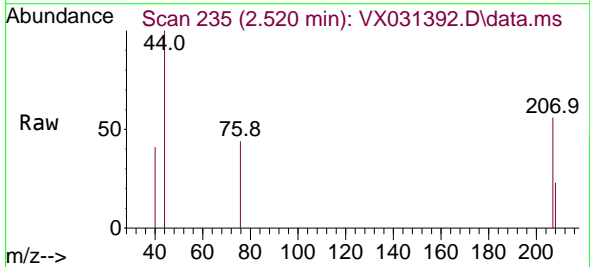
Instrument : MSVOA\_X  
 ClientSampleId : BP-VPB-RW5-TB-20220909

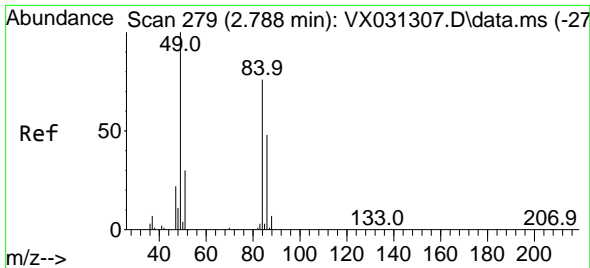
Tgt Ion: 43 Resp: 526  
 Ion Ratio Lower Upper  
 43 100  
 58 25.2 23.8 35.8



#17  
 Carbon Disulfide  
 Concen: 0.915 ug/l  
 RT: 2.520 min Scan# 235  
 Delta R.T. 0.013 min  
 Lab File: VX031392.D  
 Acq: 16 Sep 2022 07:22

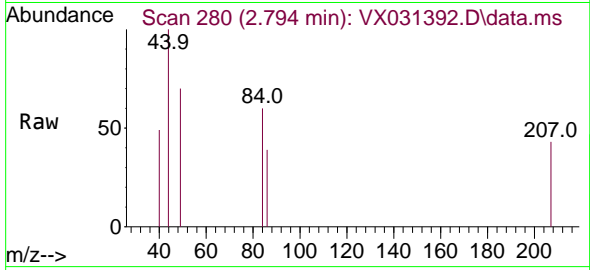
Tgt Ion: 76 Resp: 102  
 Ion Ratio Lower Upper  
 76 100  
 78 0.0 7.2 10.8#



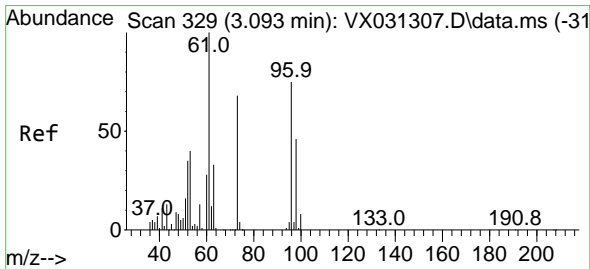
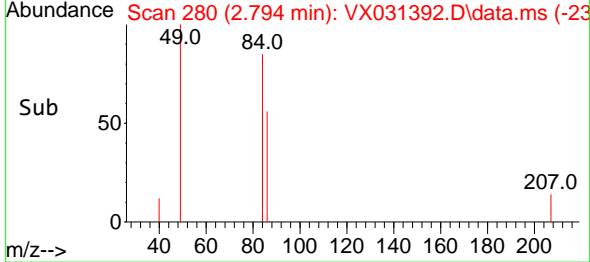
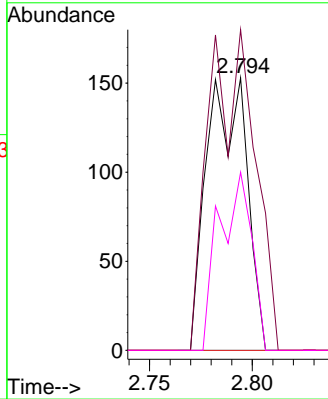


#20  
 Methylene Chloride  
 Concen: Below Cal  
 RT: 2.794 min Scan# 21  
 Delta R.T. 0.006 min  
 Lab File: VX031392.D  
 Acq: 16 Sep 2022 07:22

Instrument : MSVOA\_X  
 ClientSampleId : BP-VPB-RW5-TB-20220909

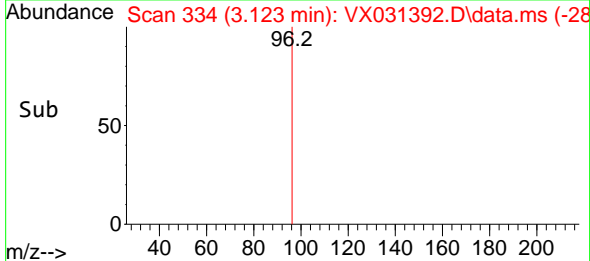
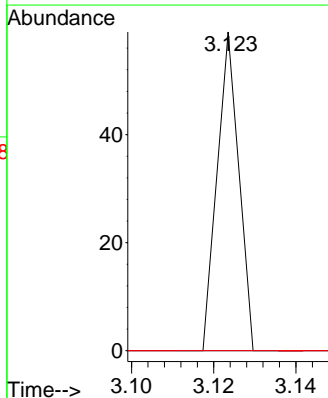
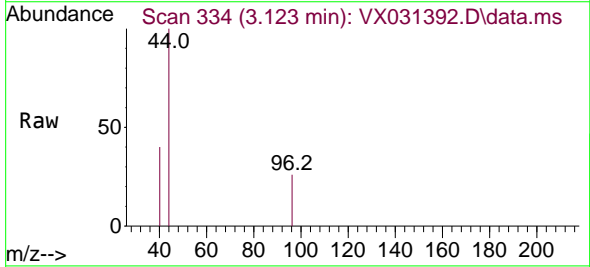


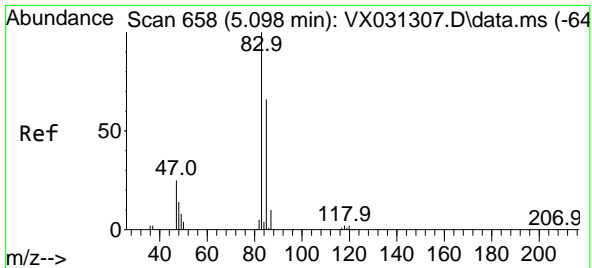
Tgt Ion: 84 Resp: 206  
 Ion Ratio Lower Upper  
 84 100  
 49 117.6 105.9 158.9  
 51 0.0 32.2 48.2#  
 86 65.4 50.8 76.2



#21  
 trans-1,2-Dichloroethene  
 Concen: Below Cal  
 RT: 3.123 min Scan# 334  
 Delta R.T. 0.030 min  
 Lab File: VX031392.D  
 Acq: 16 Sep 2022 07:22

Tgt Ion: 96 Resp: 22  
 Ion Ratio Lower Upper  
 96 100  
 61 0.0 106.7 160.1#  
 98 0.0 48.7 73.1#

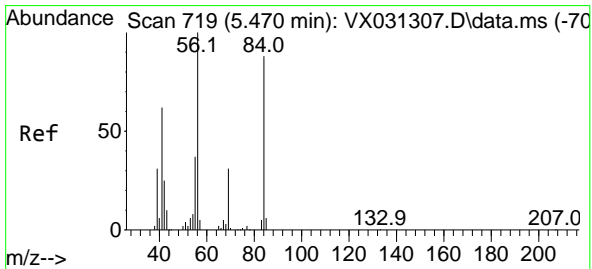
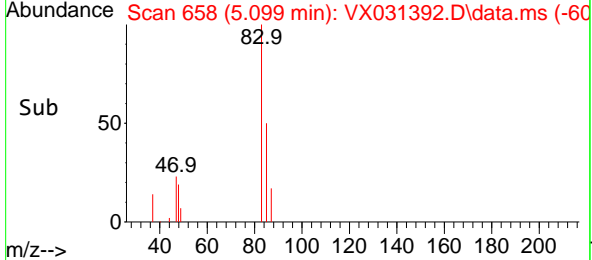
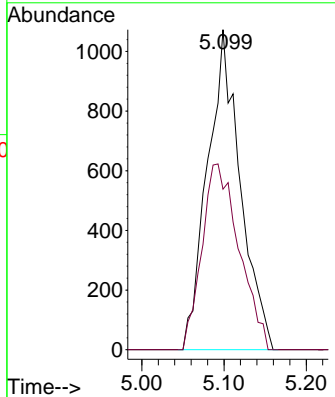
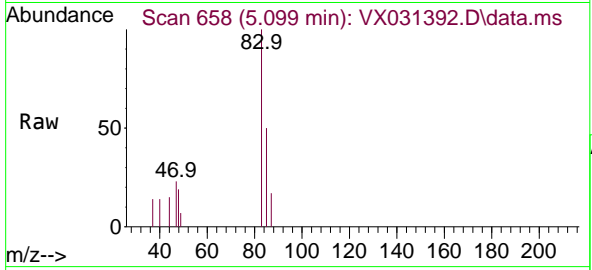




#30  
 Chloroform  
 Concen: 0.967 ug/l  
 RT: 5.099 min Scan# 61  
 Delta R.T. 0.000 min  
 Lab File: VX031392.D  
 Acq: 16 Sep 2022 07:22

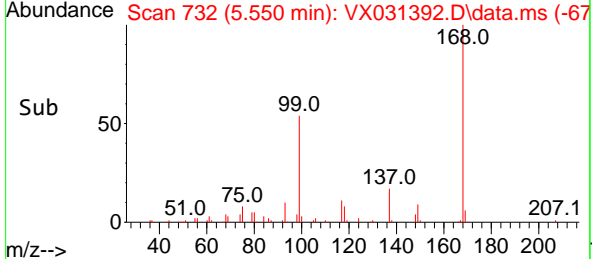
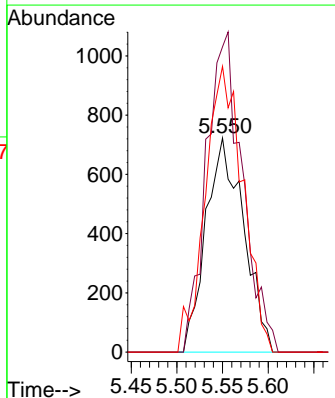
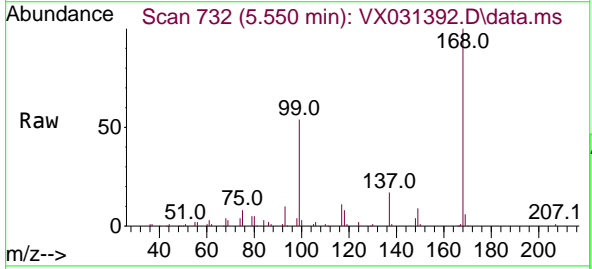
Instrument : MSVOA\_X  
 Client SampleId : BP-VPB-RW5-TB-20220909

Tgt Ion: 83 Resp: 2974  
 Ion Ratio Lower Upper  
 83 100  
 85 50.1 52.8 79.2#

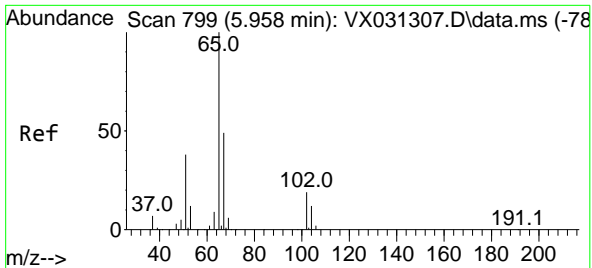


#31  
 Cyclohexane  
 Concen: 0.918 ug/l  
 RT: 5.550 min Scan# 732  
 Delta R.T. 0.079 min  
 Lab File: VX031392.D  
 Acq: 16 Sep 2022 07:22

Tgt Ion: 56 Resp: 2075  
 Ion Ratio Lower Upper  
 56 100  
 69 142.6 25.1 37.7#  
 84 133.5 70.2 105.4#



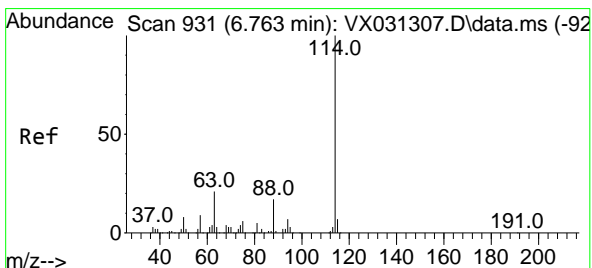
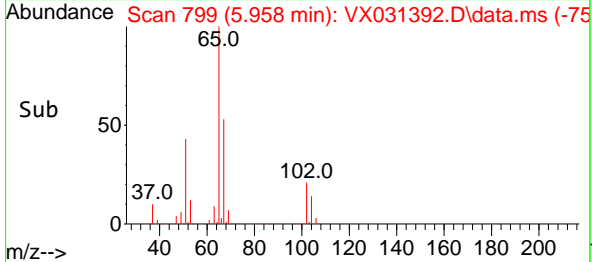
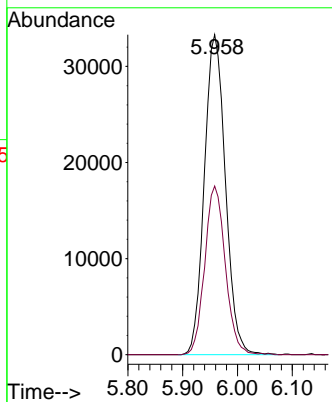
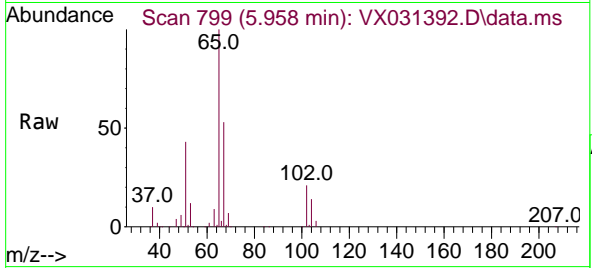




#33  
 1,2-Dichloroethane-d4  
 Concen: 42.146 ug/l  
 RT: 5.958 min Scan# 799  
 Delta R.T. 0.000 min  
 Lab File: VX031392.D  
 Acq: 16 Sep 2022 07:22

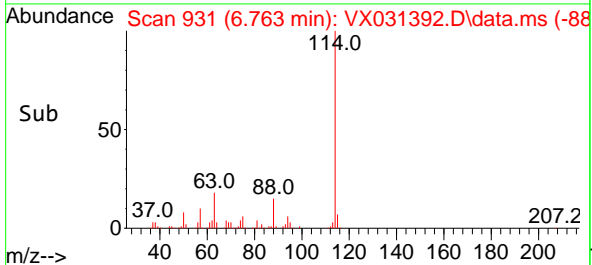
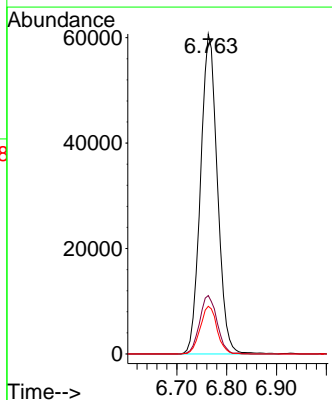
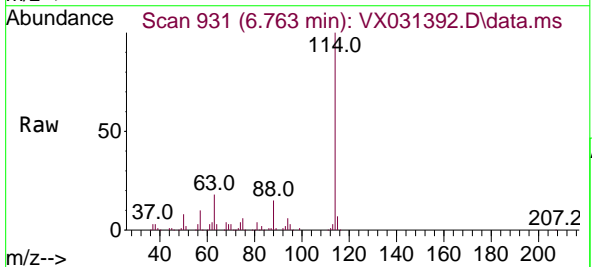
Instrument : MSVOA\_X  
 ClientSampleId : BP-VPB-RW5-TB-20220909

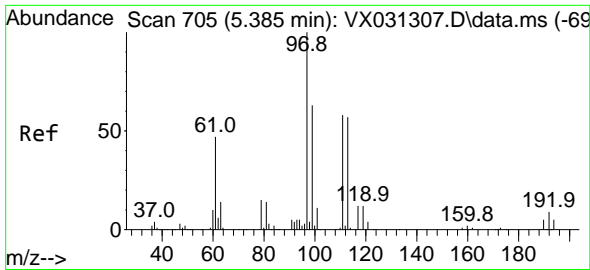
Tgt Ion: 65 Resp: 88713  
 Ion Ratio Lower Upper  
 65 100  
 67 51.6 0.0 102.4



#34  
 1,4-Difluorobenzene  
 Concen: 50.000 ug/l  
 RT: 6.763 min Scan# 931  
 Delta R.T. 0.000 min  
 Lab File: VX031392.D  
 Acq: 16 Sep 2022 07:22

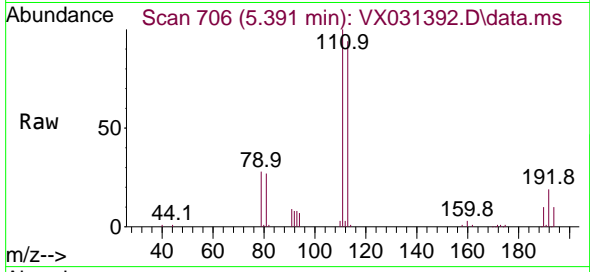
Tgt Ion:114 Resp: 142162  
 Ion Ratio Lower Upper  
 114 100  
 63 18.3 0.0 42.6  
 88 14.9 0.0 33.0



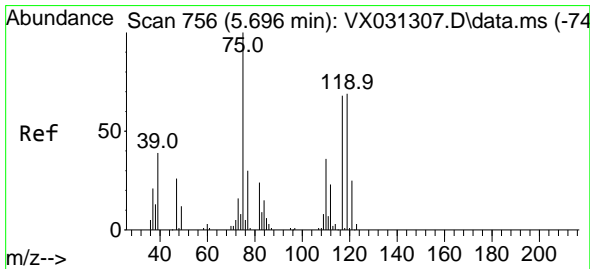
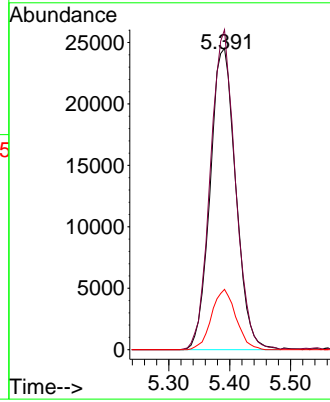
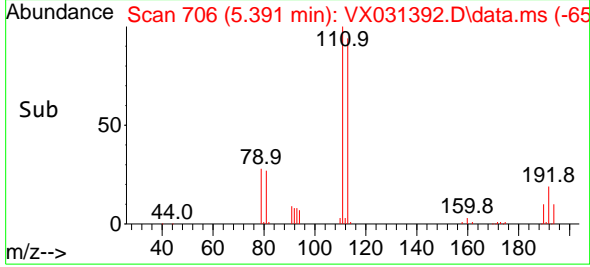


#35  
 Dibromofluoromethane  
 Concen: 46.809 ug/l  
 RT: 5.391 min Scan# 705  
 Delta R.T. 0.006 min  
 Lab File: VX031392.D  
 Acq: 16 Sep 2022 07:22

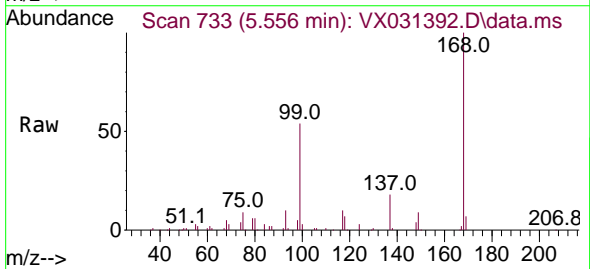
Instrument : MSVOA\_X  
 ClientSampleId : BP-VPB-RW5-TB-20220909



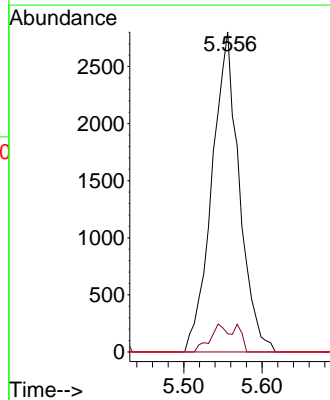
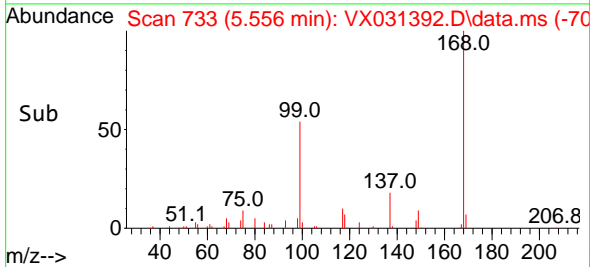
Tgt Ion:113 Resp: 71530  
 Ion Ratio Lower Upper  
 113 100  
 111 104.0 82.4 123.6  
 192 19.1 14.1 21.1

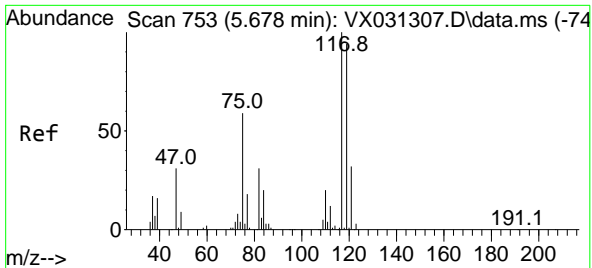


#36  
 1,1-Dichloropropene  
 Concen: 3.253 ug/l  
 RT: 5.556 min Scan# 733  
 Delta R.T. -0.140 min  
 Lab File: VX031392.D  
 Acq: 16 Sep 2022 07:22



Tgt Ion: 75 Resp: 6805  
 Ion Ratio Lower Upper  
 75 100  
 110 6.2 17.5 52.5#  
 77 0.0 24.9 37.3#

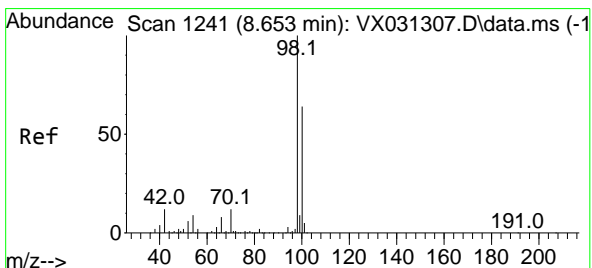
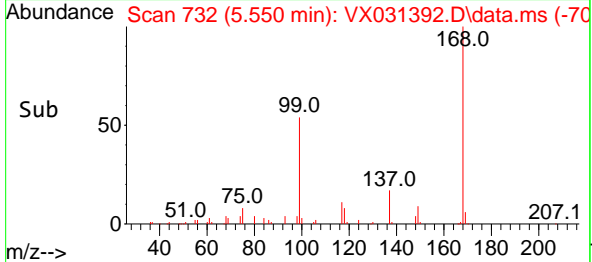
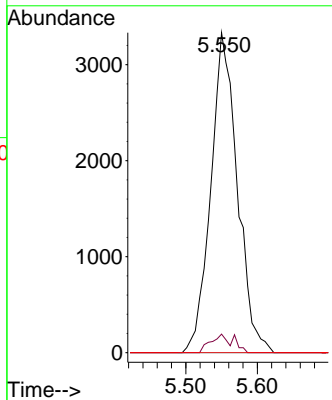
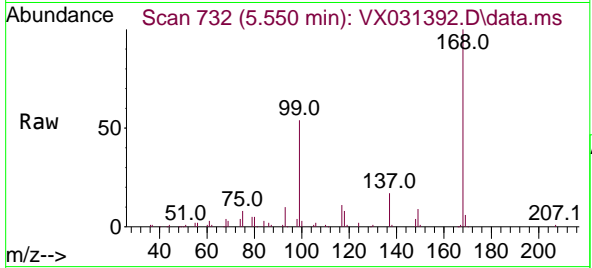




#38  
 Carbon Tetrachloride  
 Concen: 3.789 ug/l  
 RT: 5.550 min Scan# 711  
 Delta R.T. -0.128 min  
 Lab File: VX031392.D  
 Acq: 16 Sep 2022 07:22

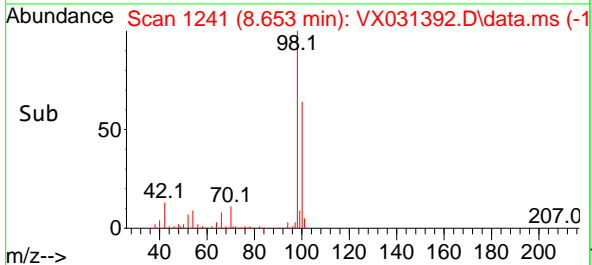
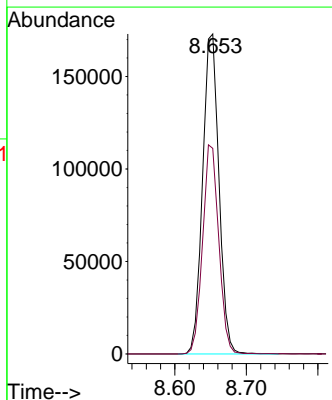
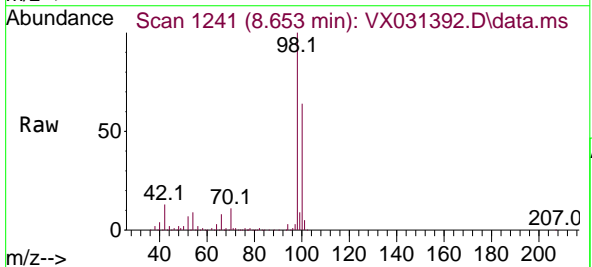
Instrument : MSVOA\_X  
 ClientSampleId : BP-VPB-RW5-TB-20220909

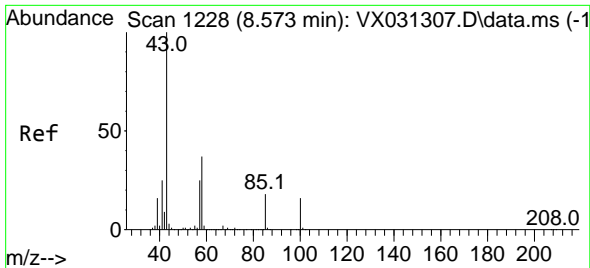
Tgt Ion	Resp	Lower	Upper
117	8614		
119	5.8	74.6	112.0#
121	0.0	25.3	37.9#



#50  
 Toluene-d8  
 Concen: 47.908 ug/l  
 RT: 8.653 min Scan# 1241  
 Delta R.T. 0.000 min  
 Lab File: VX031392.D  
 Acq: 16 Sep 2022 07:22

Tgt Ion	Resp	Lower	Upper
98	274620		
100	64.5	52.5	78.7

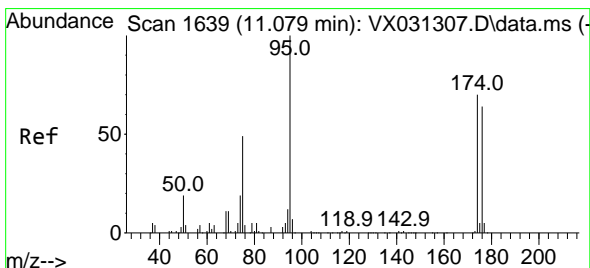
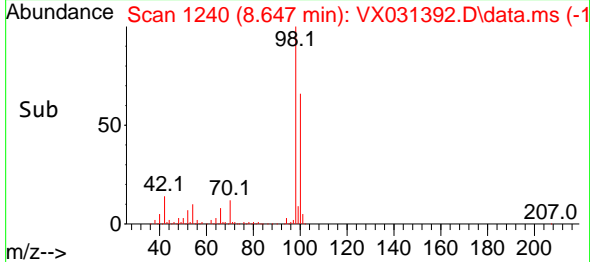
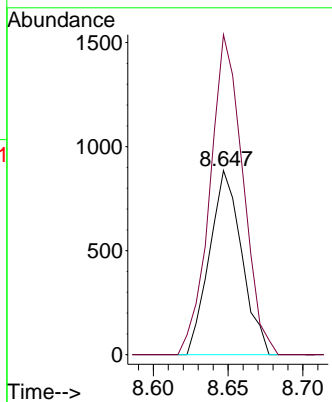
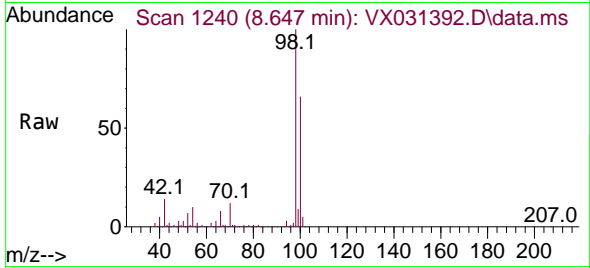




#51  
 4-Methyl-2-Pentanone  
 Concen: 0.466 ug/l  
 RT: 8.647 min Scan# 11  
 Delta R.T. 0.073 min  
 Lab File: VX031392.D  
 Acq: 16 Sep 2022 07:22

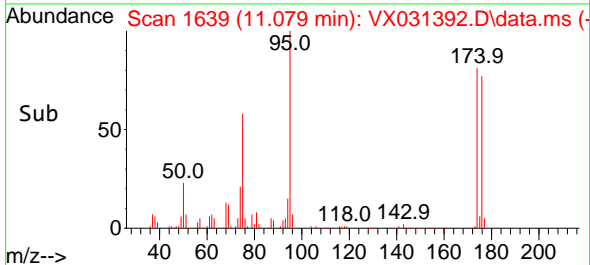
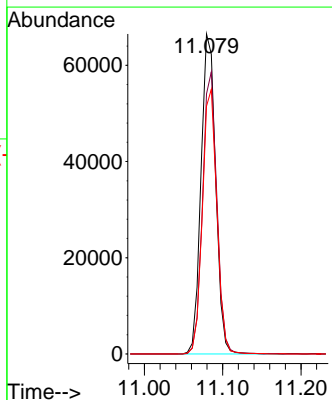
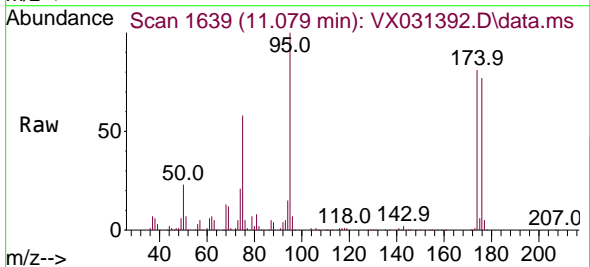
Instrument : MSVOA\_X  
 ClientSampleId : BP-VPB-RW5-TB-20220909

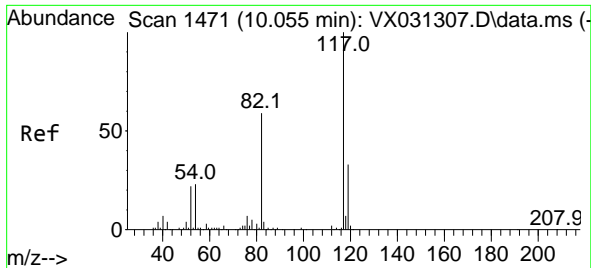
Tgt Ion: 43 Resp: 1328  
 Ion Ratio Lower Upper  
 43 100  
 58 177.4 30.6 46.0#



#62  
 4-Bromofluorobenzene  
 Concen: 41.125 ug/l  
 RT: 11.079 min Scan# 1639  
 Delta R.T. 0.000 min  
 Lab File: VX031392.D  
 Acq: 16 Sep 2022 07:22

Tgt Ion: 95 Resp: 86327  
 Ion Ratio Lower Upper  
 95 100  
 174 86.0 0.0 153.2  
 176 81.9 0.0 144.0



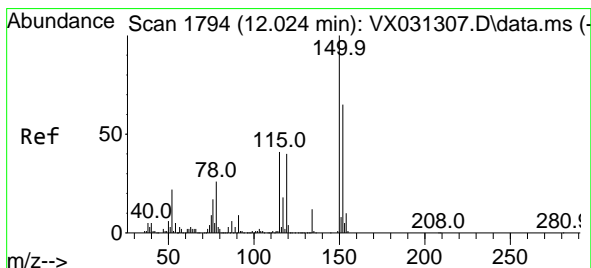
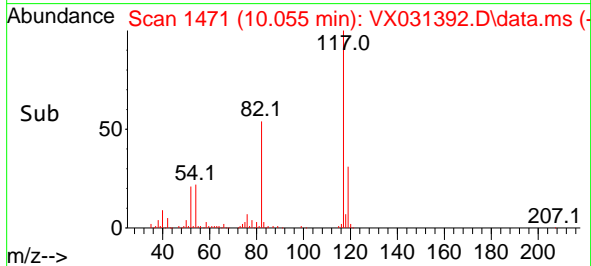
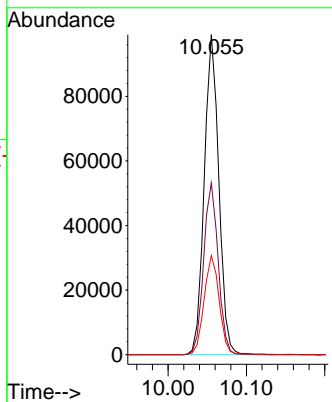
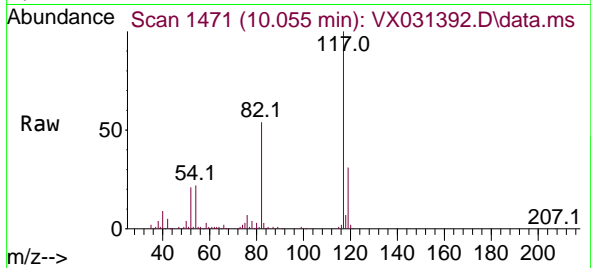


#63  
 Chlorobenzene-d5  
 Concen: 50.000 ug/l  
 RT: 10.055 min Scan# 1471  
 Delta R.T. 0.000 min  
 Lab File: VX031392.D  
 Acq: 16 Sep 2022 07:22

Instrument : MSVOA\_X  
 ClientSampleId : BP-VPB-RW5-TB-20220909

Tgt Ion:117 Resp: 127765

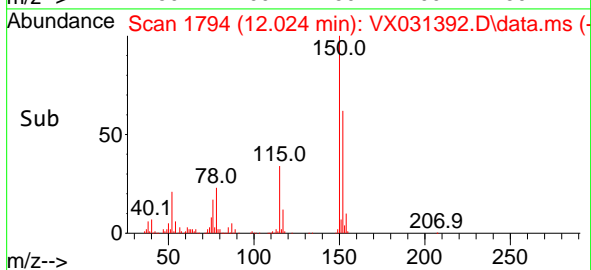
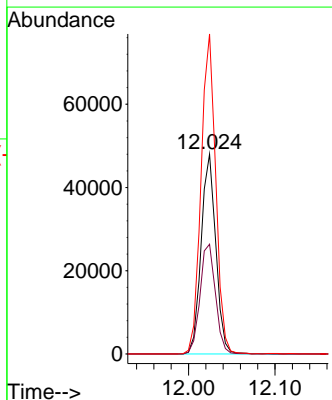
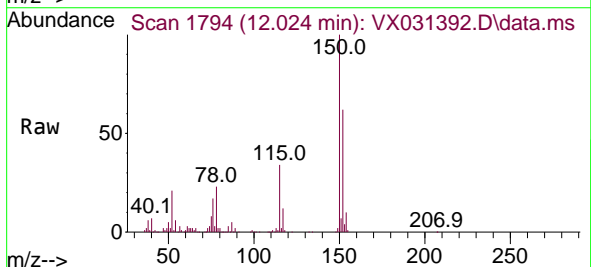
Ion	Ratio	Lower	Upper
117	100		
82	53.6	46.8	70.2
119	30.9	26.4	39.6

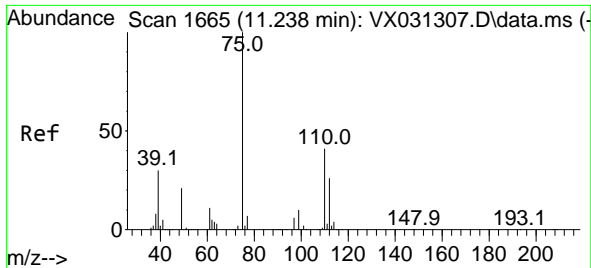


#72  
 1,4-Dichlorobenzene-d4  
 Concen: 50.000 ug/l  
 RT: 12.024 min Scan# 1794  
 Delta R.T. 0.000 min  
 Lab File: VX031392.D  
 Acq: 16 Sep 2022 07:22

Tgt Ion:152 Resp: 56519

Ion	Ratio	Lower	Upper
152	100		
115	57.8	43.4	130.1
150	160.0	0.0	346.8

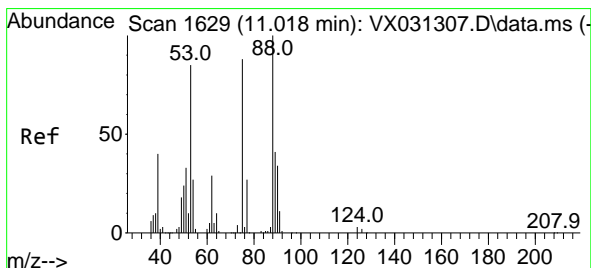
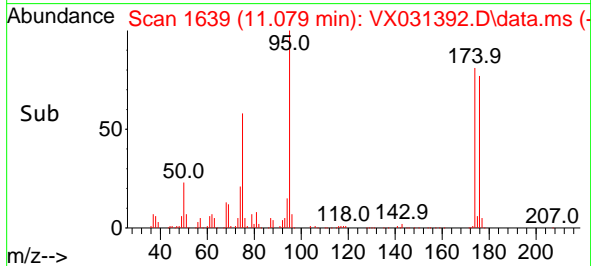
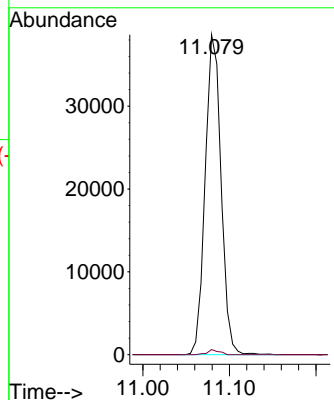
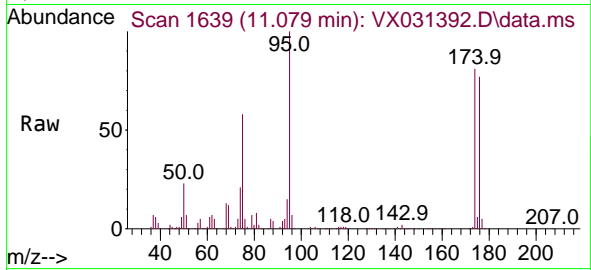




#76  
 1,2,3-Trichloropropane  
 Concen: 34.542 ug/l  
 RT: 11.079 min Scan# 1639  
 Delta R.T. -0.158 min  
 Lab File: VX031392.D  
 Acq: 16 Sep 2022 07:22

Instrument : MSVOA\_X  
 ClientSampleId : BP-VPB-RW5-TB-20220909

Tgt Ion: 75 Resp: 49198  
 Ion Ratio Lower Upper  
 75 100  
 77 1.2 20.3 60.9#



#81  
 trans-1,4-Dichloro-2-butene  
 Concen: 95.579 ug/l  
 RT: 11.079 min Scan# 1639  
 Delta R.T. 0.061 min  
 Lab File: VX031392.D  
 Acq: 16 Sep 2022 07:22

Tgt Ion: 75 Resp: 49198  
 Ion Ratio Lower Upper  
 75 100  
 53 0.0 77.6 116.4#  
 89 0.0 37.4 56.0#

