

Data Path : Z:\voasrv\HPCHEM1\MSVOA\_X\Data\VX091522\  
 Data File : VX031366.D  
 Acq On : 15 Sep 2022 20:06  
 Operator : JC/MD  
 Sample : N4508-01  
 Misc : 5.0mL/MSVOA\_X/WATER  
 ALS Vial : 17 Sample Multiplier: 1

Instrument :  
 MSVOA\_X  
 ClientSampleId :  
 MW-05-3-13-090122

Quant Time: Sep 16 04:57:44 2022  
 Quant Method : Z:\voasrv\HPCHEM1\MSVOA\_X\Method\82X091422W.M  
 Quant Title : SW846 8260  
 QLast Update : Thu Sep 15 01:50:07 2022  
 Response via : Initial Calibration

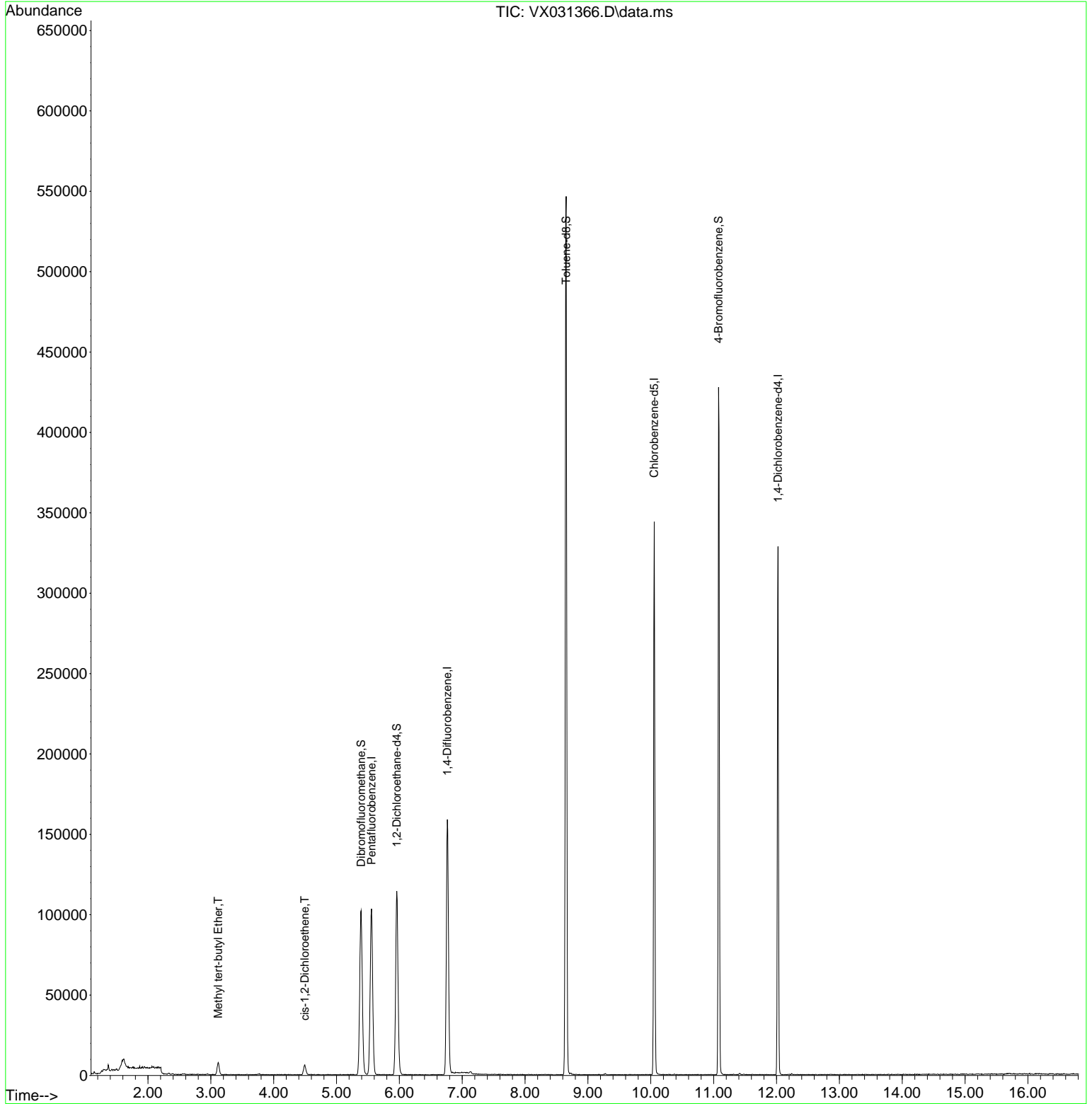
Compound	R.T.	QIon	Response	Conc	Units	Dev(Min)
-----						
Internal Standards						
1) Pentafluorobenzene	5.556	168	95422	50.000	ug/l	0.00
34) 1,4-Difluorobenzene	6.763	114	161673	50.000	ug/l	0.00
63) Chlorobenzene-d5	10.055	117	145128	50.000	ug/l	0.00
72) 1,4-Dichlorobenzene-d4	12.024	152	63931	50.000	ug/l	0.00
System Monitoring Compounds						
33) 1,2-Dichloroethane-d4	5.958	65	101806	43.467	ug/l	0.00
Spiked Amount	50.000	Range	74 - 125	Recovery	=	86.940%
35) Dibromofluoromethane	5.391	113	84906	48.856	ug/l	0.00
Spiked Amount	50.000	Range	75 - 124	Recovery	=	97.720%
50) Toluene-d8	8.653	98	320523	49.168	ug/l	0.00
Spiked Amount	50.000	Range	86 - 113	Recovery	=	98.340%
62) 4-Bromofluorobenzene	11.079	95	101335	42.449	ug/l	0.00
Spiked Amount	50.000	Range	83 - 123	Recovery	=	84.900%
Target Compounds						
						Qvalue
19) Methyl tert-butyl Ether	3.117	73	8631	1.399	ug/l	94
27) cis-1,2-Dichloroethene	4.495	96	3886	1.980	ug/l	76
-----						

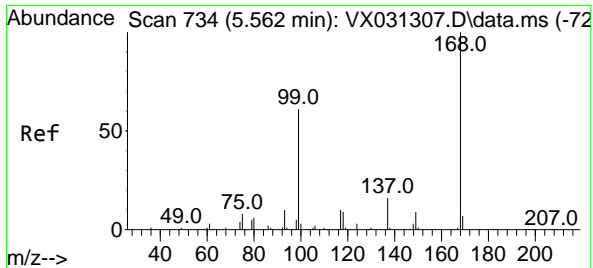
(#) = qualifier out of range (m) = manual integration (+) = signals summed

Data Path : Z:\voasrv\HPCHEM1\MSVOA\_X\Data\VX091522\  
 Data File : VX031366.D  
 Acq On : 15 Sep 2022 20:06  
 Operator : JC/MD  
 Sample : N4508-01  
 Misc : 5.0mL/MSVOA\_X/WATER  
 ALS Vial : 17 Sample Multiplier: 1

Instrument :  
 MSVOA\_X  
 ClientSampleId :  
 MW-05-3-13-090122

Quant Time: Sep 16 04:57:44 2022  
 Quant Method : Z:\voasrv\HPCHEM1\MSVOA\_X\Method\82X091422W.M  
 Quant Title : SW846 8260  
 QLast Update : Thu Sep 15 01:50:07 2022  
 Response via : Initial Calibration

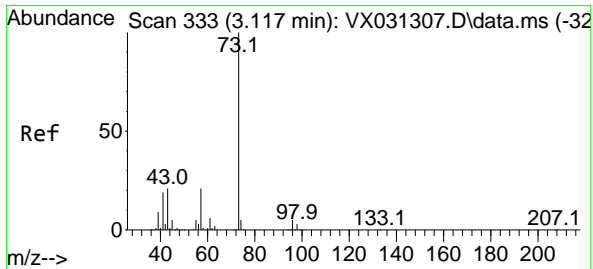
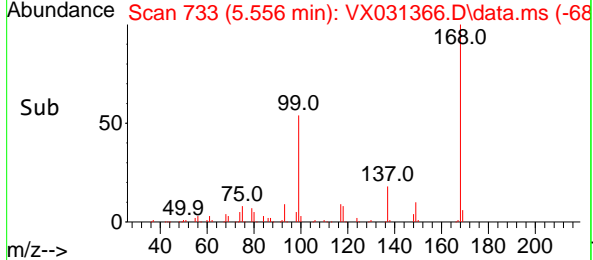
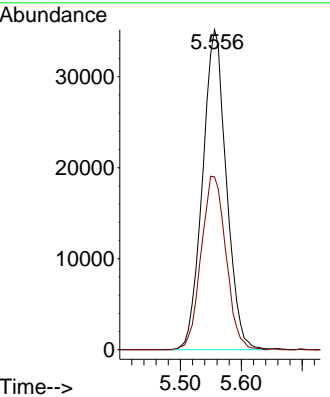
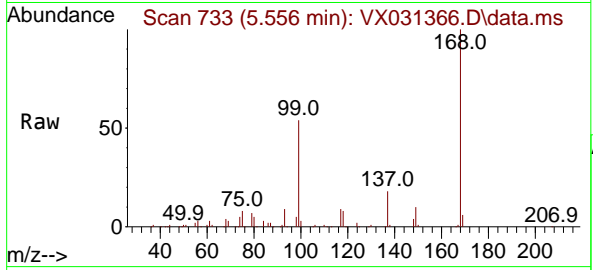




#1  
 Pentafluorobenzene  
 Concen: 50.000 ug/l  
 RT: 5.556 min Scan# 71  
 Delta R.T. -0.006 min  
 Lab File: VX031366.D  
 Acq: 15 Sep 2022 20:06

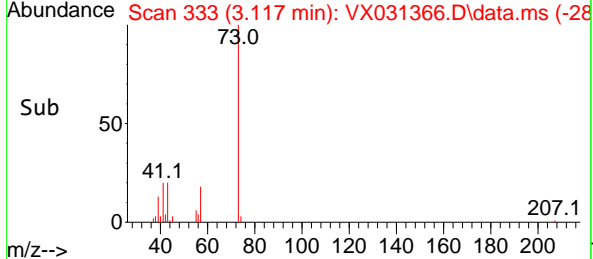
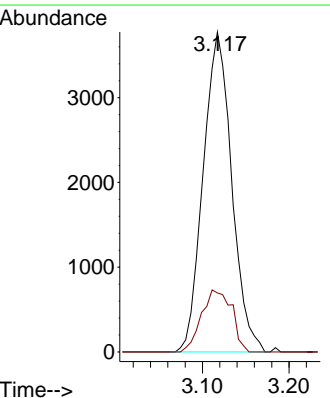
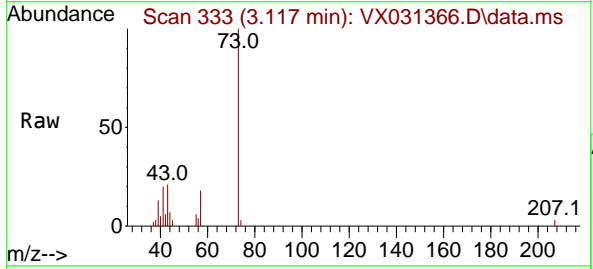
Instrument : MSVOA\_X  
 ClientSampleId : MW-05-3-13-090122

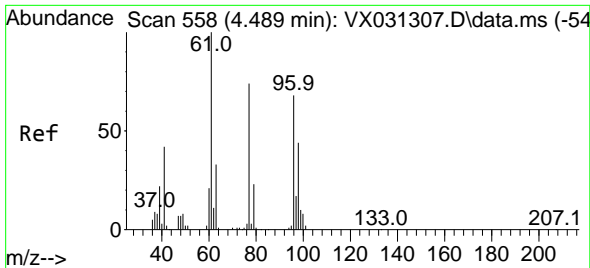
Tgt Ion:168 Resp: 95422  
 Ion Ratio Lower Upper  
 168 100  
 99 54.0 48.8 73.2



#19  
 Methyl tert-butyl Ether  
 Concen: 1.399 ug/l  
 RT: 3.117 min Scan# 333  
 Delta R.T. 0.000 min  
 Lab File: VX031366.D  
 Acq: 15 Sep 2022 20:06

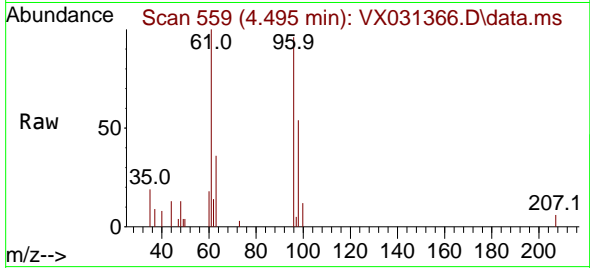
Tgt Ion: 73 Resp: 8631  
 Ion Ratio Lower Upper  
 73 100  
 57 18.4 17.2 25.8



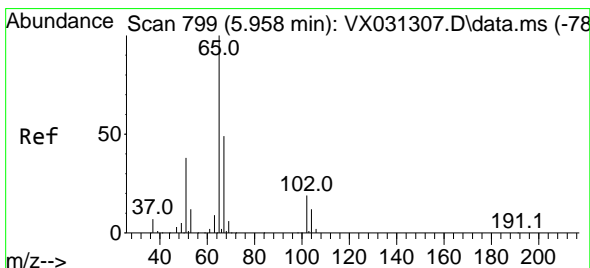
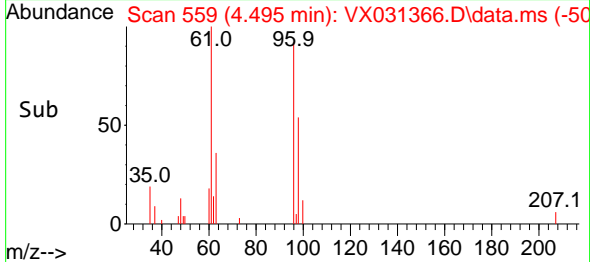
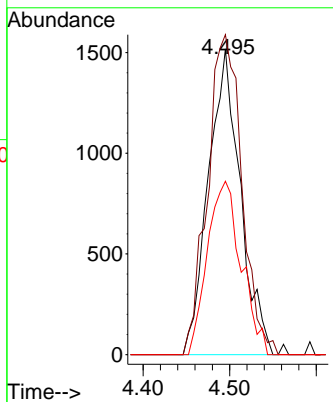


#27  
 cis-1,2-Dichloroethene  
 Concen: 1.980 ug/l  
 RT: 4.495 min Scan# 511  
 Delta R.T. 0.006 min  
 Lab File: VX031366.D  
 Acq: 15 Sep 2022 20:06

Instrument : MSVOA\_X  
 ClientSampleId : MW-05-3-13-090122

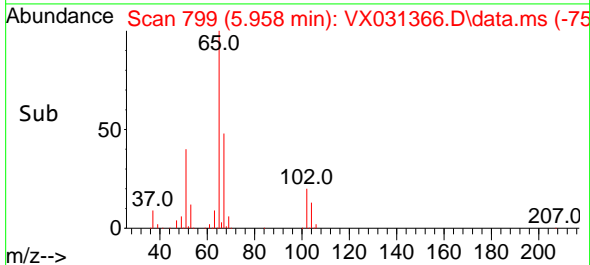
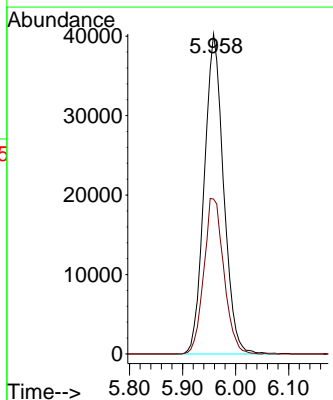
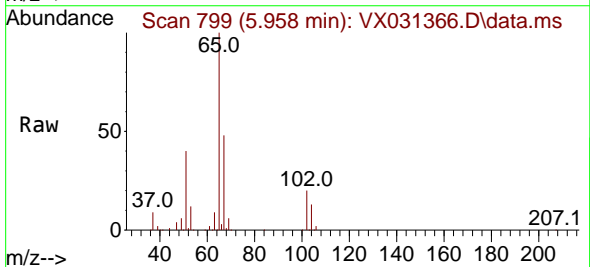


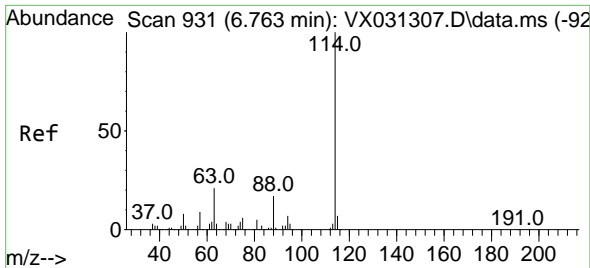
Tgt Ion: 96 Resp: 3886  
 Ion Ratio Lower Upper  
 96 100  
 61 112.4 0.0 305.2  
 98 60.0 0.0 128.4



#33  
 1,2-Dichloroethane-d4  
 Concen: 43.467 ug/l  
 RT: 5.958 min Scan# 799  
 Delta R.T. 0.000 min  
 Lab File: VX031366.D  
 Acq: 15 Sep 2022 20:06

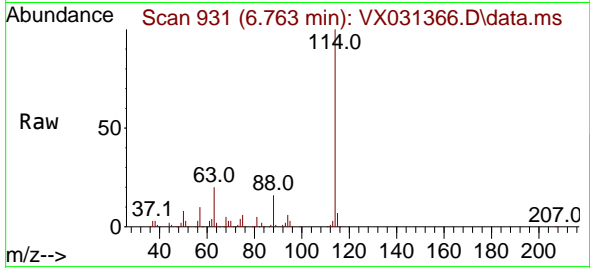
Tgt Ion: 65 Resp: 101806  
 Ion Ratio Lower Upper  
 65 100  
 67 50.4 0.0 102.4



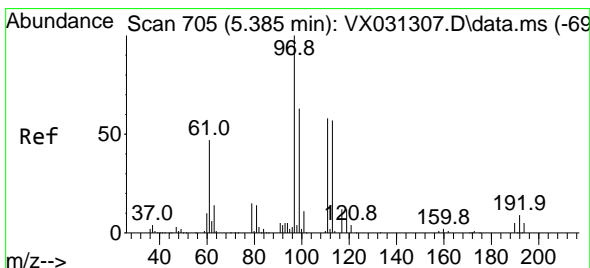
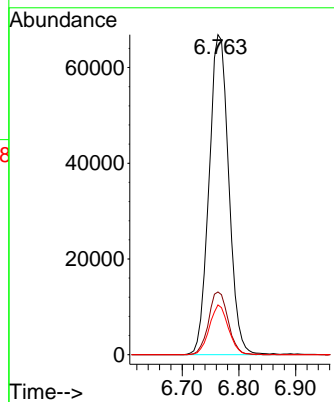
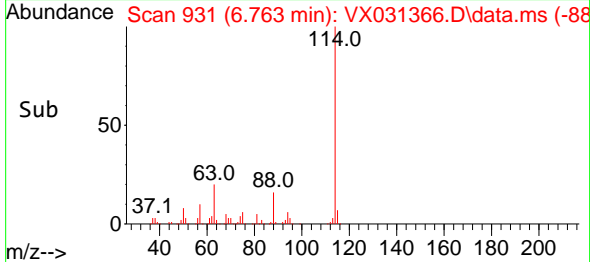


#34  
 1,4-Difluorobenzene  
 Concen: 50.000 ug/l  
 RT: 6.763 min Scan# 911  
 Delta R.T. 0.000 min  
 Lab File: VX031366.D  
 Acq: 15 Sep 2022 20:06

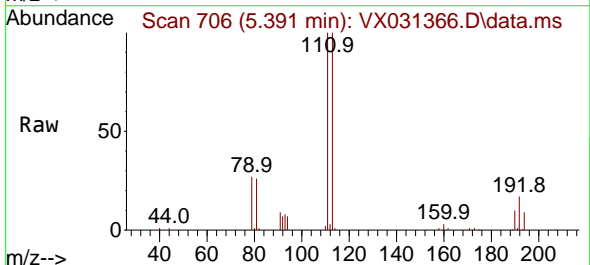
Instrument : MSVOA\_X  
 ClientSampleId : MW-05-3-13-090122



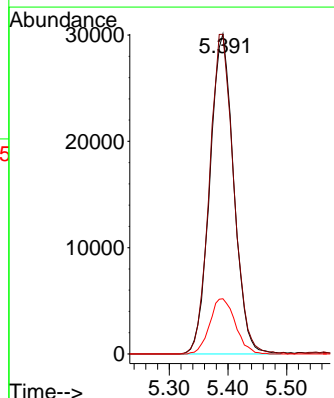
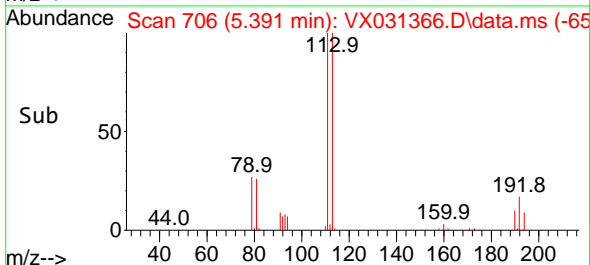
Tgt Ion:114 Resp: 161673  
 Ion Ratio Lower Upper  
 114 100  
 63 19.6 0.0 42.6  
 88 15.6 0.0 33.0

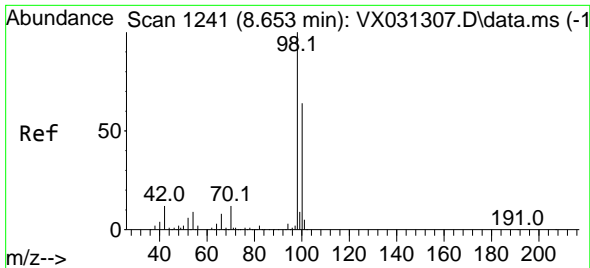


#35  
 Dibromofluoromethane  
 Concen: 48.856 ug/l  
 RT: 5.391 min Scan# 706  
 Delta R.T. 0.006 min  
 Lab File: VX031366.D  
 Acq: 15 Sep 2022 20:06



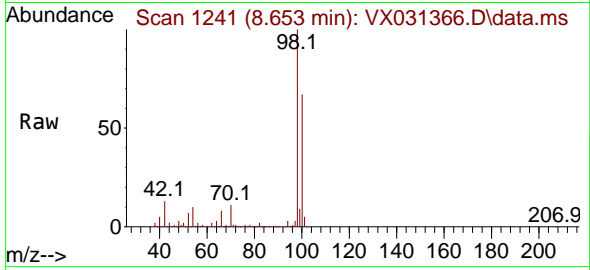
Tgt Ion:113 Resp: 84906  
 Ion Ratio Lower Upper  
 113 100  
 111 101.5 82.4 123.6  
 192 18.5 14.1 21.1



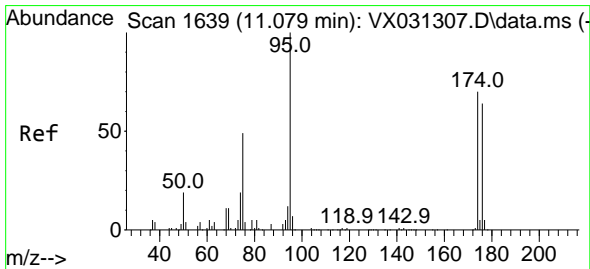
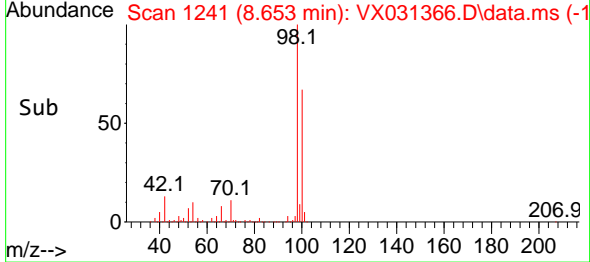
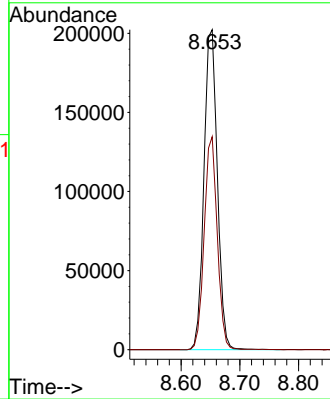


#50  
 Toluene-d8  
 Concen: 49.168 ug/l  
 RT: 8.653 min Scan# 11  
 Delta R.T. 0.000 min  
 Lab File: VX031366.D  
 Acq: 15 Sep 2022 20:06

Instrument : MSVOA\_X  
 ClientSampleId : MW-05-3-13-090122

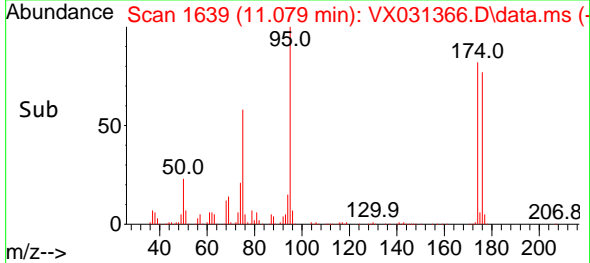
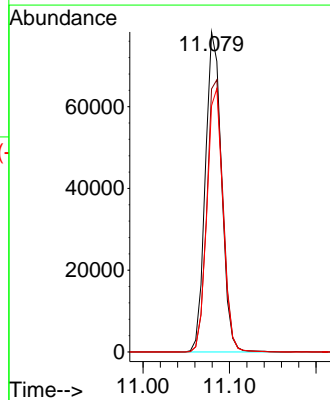
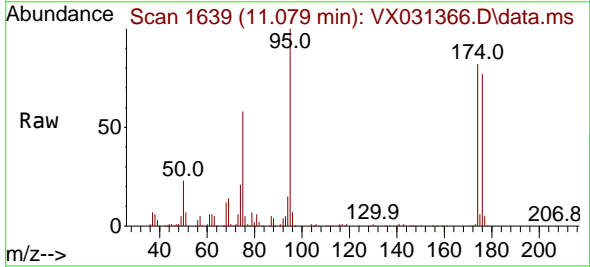


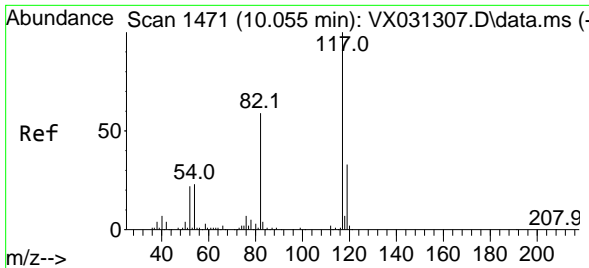
Tgt Ion: 98 Resp: 320523  
 Ion Ratio Lower Upper  
 98 100  
 100 64.9 52.5 78.7



#62  
 4-Bromofluorobenzene  
 Concen: 42.449 ug/l  
 RT: 11.079 min Scan# 1639  
 Delta R.T. 0.000 min  
 Lab File: VX031366.D  
 Acq: 15 Sep 2022 20:06

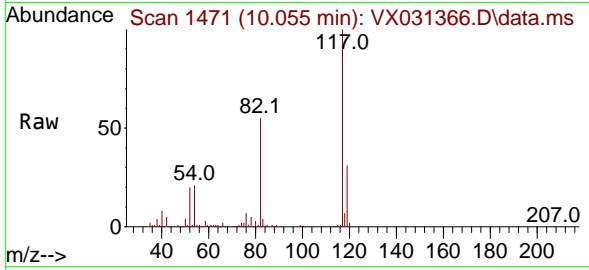
Tgt Ion: 95 Resp: 101335  
 Ion Ratio Lower Upper  
 95 100  
 174 85.5 0.0 153.2  
 176 81.9 0.0 144.0





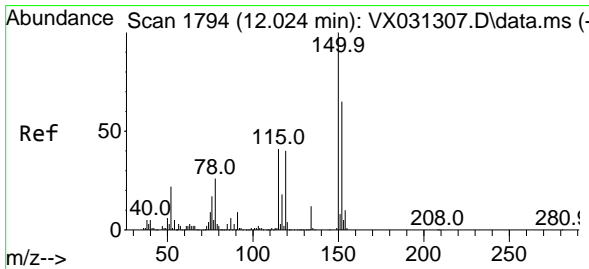
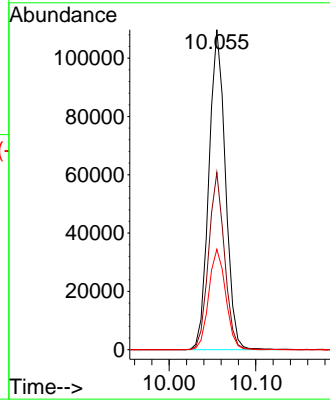
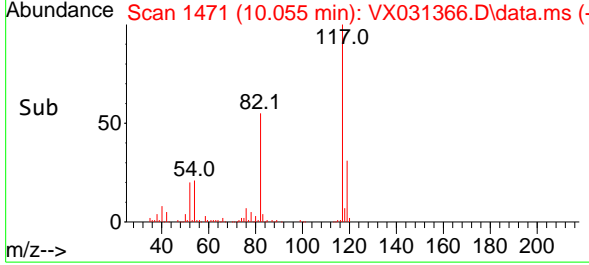
#63  
 Chlorobenzene-d5  
 Concen: 50.000 ug/l  
 RT: 10.055 min Scan# 1471  
 Delta R.T. 0.000 min  
 Lab File: VX031366.D  
 Acq: 15 Sep 2022 20:06

Instrument : MSVOA\_X  
 ClientSampleId : MW-05-3-13-090122

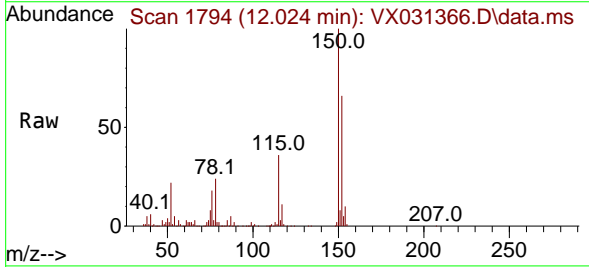


Tgt Ion:117 Resp: 145128

Ion	Ratio	Lower	Upper
117	100		
82	55.4	46.8	70.2
119	31.4	26.4	39.6



#72  
 1,4-Dichlorobenzene-d4  
 Concen: 50.000 ug/l  
 RT: 12.024 min Scan# 1794  
 Delta R.T. 0.000 min  
 Lab File: VX031366.D  
 Acq: 15 Sep 2022 20:06



Tgt Ion:152 Resp: 63931

Ion	Ratio	Lower	Upper
152	100		
115	56.8	43.4	130.1
150	156.9	0.0	346.8

